

# ***Interactive comment on “Accelerated wastage of the Monte Perdido Glacier in the Spanish Pyrenees during recent stationary climatic conditions” by J. I. López-Moreno et al.***

**L. Carturan (Referee)**

luca.carturan@unipd.it

Received and published: 18 October 2015

The comment was uploaded in the form of a supplement:  
<http://www.the-cryosphere-discuss.net/9/C1894/2015/tcd-9-C1894-2015-supplement.pdf>

Interactive comment on The Cryosphere Discuss., 9, 5021, 2015.

Full Screen / Esc

Printer-friendly Version

Interactive Discussion

Discussion Paper



[Interactive Comment](#)

May–Oct 2013 L-OTI(°C) Anomaly vs 1983–2014 0.22

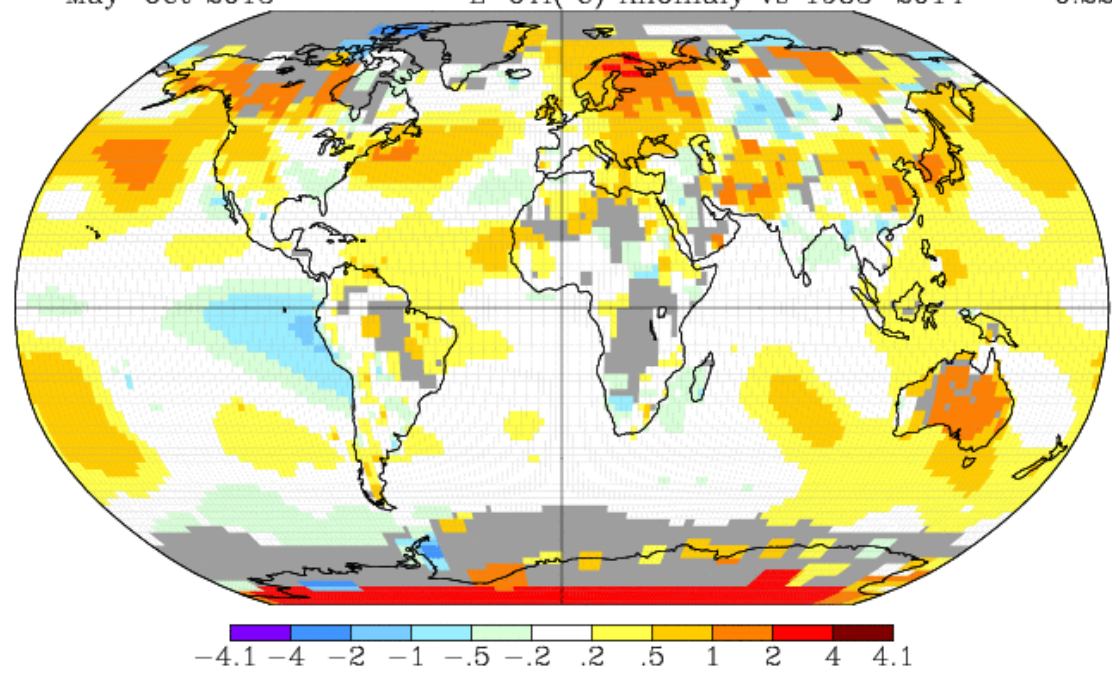


Fig. 1.

[Full Screen / Esc](#)

[Printer-friendly Version](#)

[Interactive Discussion](#)

[Discussion Paper](#)



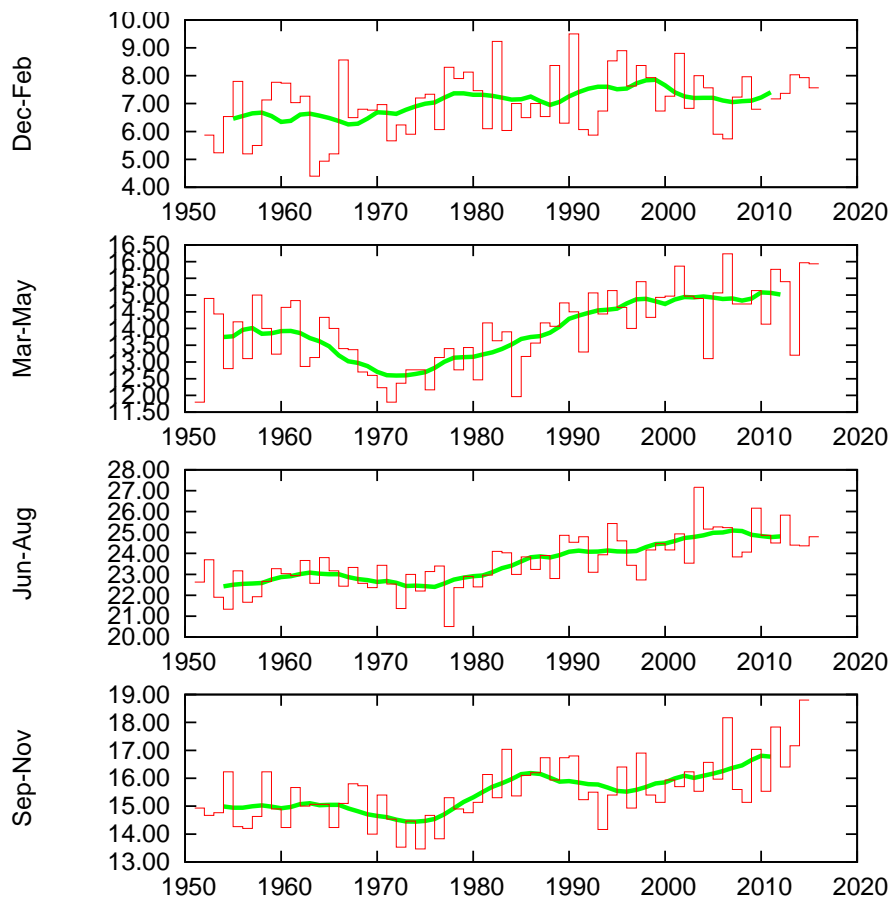


Fig. 2.

C1896

[Full Screen / Esc](#)[Printer-friendly Version](#)[Interactive Discussion](#)[Discussion Paper](#)