

Interactive comment on “Accelerated wastage of the Monte Perdido Glacier in the Spanish Pyrenees during recent stationary climatic conditions” by J. I. López-Moreno et al.

L. Carturan (Referee)

luca.carturan@unipd.it

Received and published: 18 October 2015

The comment was uploaded in the form of a supplement:
<http://www.the-cryosphere-discuss.net/9/C1894/2015/tcd-9-C1894-2015-supplement.pdf>

Interactive comment on The Cryosphere Discuss., 9, 5021, 2015.

C1894

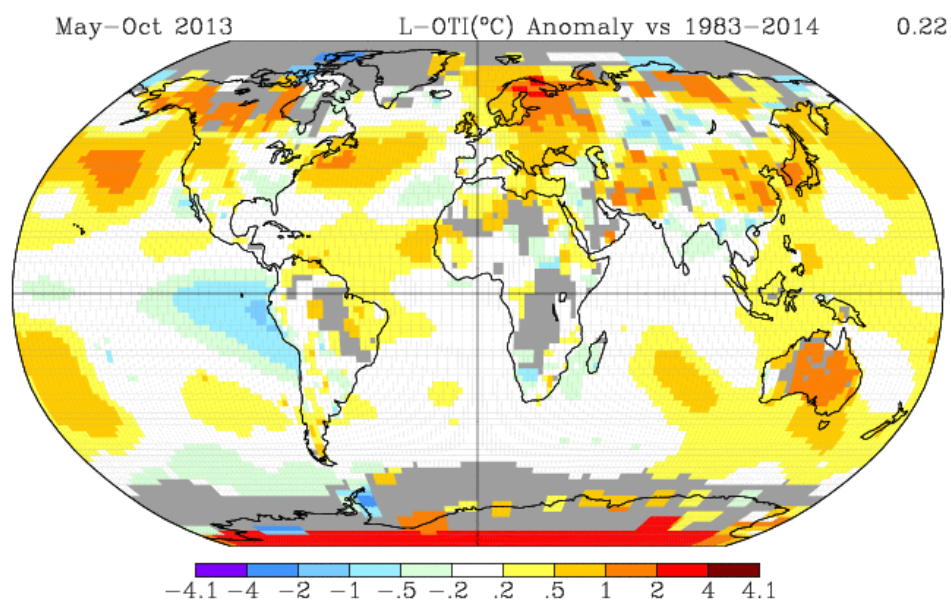


Fig. 1.

C1895

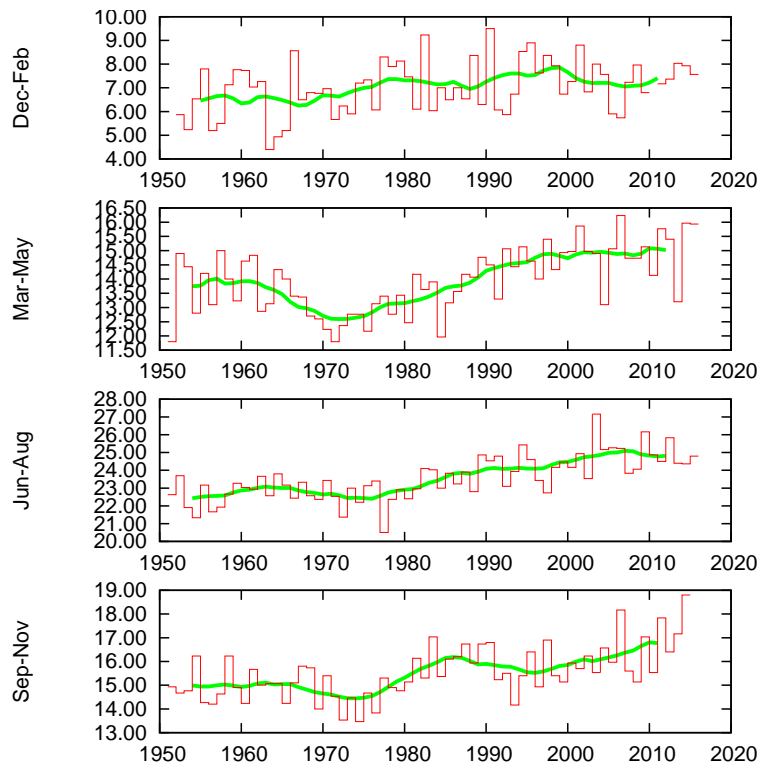


Fig. 2.

C1896