

Response of the Large-Scale Subglacial Drainage System of North East Greenland to Surface Elevation Changes

Nanna B. Karlsson¹ and Dorte Dahl-Jensen¹

¹Centre for Ice and Climate, The Niels Bohr Institute, University of Copenhagen, Denmark

Correspondence to: N. B. Karlsson (nbkarlsson@nbi.ku.dk)

Abstract. The influence of subglacial water on the dynamics of ice flow has been the object of increasing interest in the past decade. In this study we focus on large-scale, long-term changes in surface elevation over North East Greenland, and the corresponding changes in subglacial water
5 routeways. Our results show that over time-scales ranging from decades to millennia the area may experience redistribution of and fluctuation in subglacial water outflux under the main glacier outlets. The fluctuations in subglacial water routing occur even in the absence of external forcing. Based on these results we conclude that changes in the subglacial water routeways are an intrinsic part of the drainage basin dynamics, where the subglacial system is likely always in a transient state. The results
10 also imply that fluctuations at the margins observed at present might originate from changes several hundred kilometres upstream. Since surface elevation changes may propagate upstream over time-scales much longer than the observational period, the cause of the fluctuations may not be present in current observational records.

1 Introduction

15 The loss of mass from the Greenland Ice Sheet (GrIS) and its corresponding contribution to sea-level rise is by now well-documented (e.g., Vaughan et al., 2013; Hanna et al., 2013). Hence, recent years have seen an increasing interest in the response of different regions of the GrIS to climatic forcings (e.g., van den Broeke et al., 2009; Bolch et al., 2013). While the outlet glaciers in southern Greenland have been speeding up during the past decade (Bevan et al., 2012), the glaciers in the
20 northeast have until recently been considered relatively stable partly due to the presence of sea-ice and/or small ice shelves (Joughin et al., 2010).

In the northeastern drainage basin, the North East Greenland Ice Stream (NEGIS) dominates the transport of ice to the sea. NEGIS was discovered only a few decades ago when SAR (Synthetic Aperture Radar) imagery revealed the presence of a fast flow feature on the surface of the GrIS (Fahnestock et al., 1993). In comparison to other Greenlandic ice streams NEGIS is very long (more than 600 km) and it reaches velocities of 20 m/yr less than 150 km from the ice divide (Joughin et al., 2010). At the margin, NEGIS splits into three outlets (Fig. 1): Nioghalvfjærdsbræ (also at times referred to as 79 N Glacier), Zachariae Isstrøm and Storstrømmen. A study by Joughin et al. (2010) reported that while Zachariae Isstrøm is speeding up, Nioghalvfjærdsbræ shows only a small speed-up and Storstrømmen is slowing down slightly. Khan et al. (2014) also found that NEGIS was stable in the past, but report that the sector experienced rapid dynamic thinning at some point between 2003 and 2006. The authors link this speed-up to increasing summer temperatures and decreasing sea-ice concentration.

The three main outlets of NEGIS drain more than 20% of the GrIS (by area, Rignot and Kanagaratnam, 2006), it is therefore of considerable interest to understand the processes governing its ice-flow. Generally, ice streams are triggered and modulated by a range of different processes that operate on varying temporal and spatial time-scales (Winsborrow et al., 2010). NEGIS, for example, is thought to be initiated by an anomalously high geothermal heat flux close to the ice divide (Fahnestock et al., 1993). Studies indicate that the flow of the ice stream is “streaming” with very low basal shear stresses (Joughin et al., 2001). Thus, most of the ice-flow in the main part of NEGIS is thought to be due to sliding over the subglacial topography facilitated by subglacial water rather than internal deformation (Joughin et al., 2001). This has also been confirmed by analyses of radio-echo sounding data retrieved from the central ice stream trunk (Keisling et al., 2014). It is well known that liquid water at the ice bed has the potential to modify and even control the ice-flow dynamics; This happens both directly by decreasing the friction between the ice and the bed, and by modifying the subglacial sediment (e.g. Alley et al., 1986; Zwally et al., 2002; Clarke, 2005). Studies of subglacial processes confirm the importance of liquid water for ice stream behaviour (e.g. Anandakrishnan and Alley, 1997; Fahnestock et al., 2001) and recent modelling efforts have begun to address this (e.g. Bougamont et al., 2011; de Fleurian et al., 2014). The coupling between ice-flow and subglacial processes is, however, complicated and not easily incorporated into ice-sheet models. This is partly because the subglacial system may exhibit different characteristics ranging from networks of cavities and efficient tunnel-like systems, to inefficient conduits, thin water films and water flow in sediments (e.g. Gulley et al., 2009; Schoof, 2010; Iverson and Petersen, 2011).

One process that may alter ice stream behaviour over short time-scales (centennial timescales or less) is the routing of subglacial meltwater caused by variations in the subglacial hydrological system. Variations such as these are thought to have triggered significant changes in the slowing down or speeding up of Antarctic ice streams such as the Siple Coast ice streams (Anandakrishnan and Alley, 1997) and the Rutford Ice Stream (Vaughan et al., 2008). In fact, a study by Wright et al.

(2008) found that the subglacial system in a large part of East Antarctica is potentially sensitive to even small changes in ice-sheet elevation.

In contrast, changes in ice-flow directly related to the subglacial system have not yet been documented for Greenland. This is in spite of an active ice stream drainage system (Joughin et al., 2010) and few topographic constraints on most of the ice streams (Bamber et al., 2013a). This is even more surprising, since it is well-known that liquid water is widespread under large parts of the Greenland Ice Sheet; This has been testified by observations of subglacial water at ice core drill sites (Dahl-Jensen et al., 2003), from radio-echo sounding surveys (Gogineni et al., 2001; Oswald and Gogineni, 2008), and is supported by results from large-scale ice-sheet modelling (Greve and Hutter, 1995; Seroussi et al., 2013).

Recent geophysical surveys on NEGIS have found evidence of basal water along the shear margin, and the study concludes that NEGIS is controlled by subglacial water routing rather than bed topography, and that rapid shifts in ice dynamics are possible (Christianson et al., 2014). Here, we demonstrate that changes in surface elevation of the North East Greenland basin over centuries or less may change the subglacial water routeways and potentially influence the ice-flow of the area. We use a simple model approach and are therefore not aiming to, or indeed capable of, capturing the present day variations and dynamics of the region, since this variability is coupled to several complex processes not included in our model (cf. Larour et al., 2014). Rather, we focus on the sensitivity of the drainage basin to realistic fluctuations in surface elevation over time-scales of decades to millennia, and the corresponding change in hydropotential. In this case, the use of a simple model is justified because it can be run over millennial time-scales, and still provide a realistic estimate of the ice-flow behaviour.

2 Methods

We use a simple two-dimensional (2D), map-plane, ice-flow model to model the change in surface elevation over time in response to incremental increases in basal sliding. The resulting time-dependent surface elevation is used to calculate the hydropotential, in order to investigate the changes in out-flux of subglacial water at the margin over time. We force the model with a mass balance field and prescribed calving rates. Data input in the model are surface and bed elevation from Bamber et al. (2013a) regridded to 5 km (north-eastern drainage basin) and 10 km (GrIS, used in the spin-up run), and present day modelled mass balance from Ettema et al. (2009).

2.1 Ice-Flow Model

The ice-flow model is a 2D-plane model that calculates the changes in ice surface elevation in response to gravity and mass balance. It is vertically integrated and based on the shallow ice approximation using a number of simplifying assumptions. Firstly, we assume that the basal shear stress τ_b

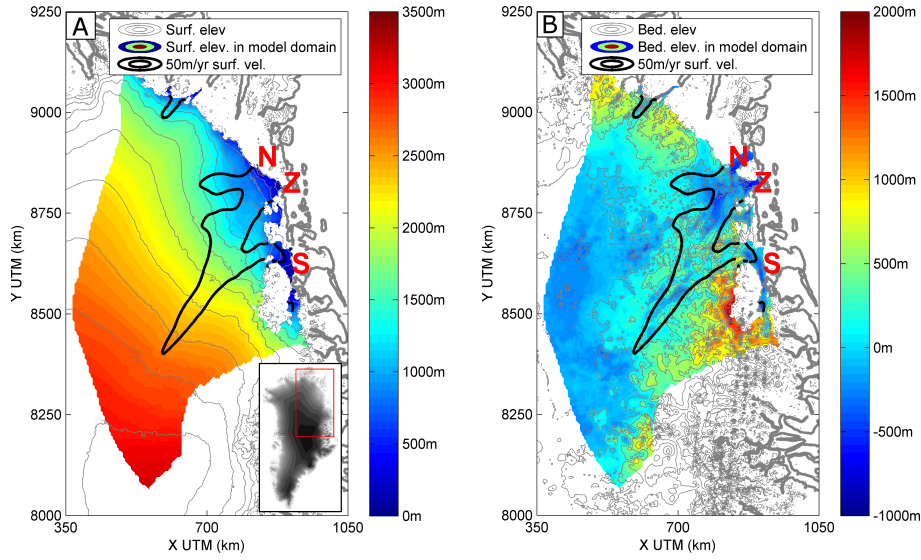


Fig. 1. Surface (A) and bed elevation (B) (Bamber et al., 2013a) in grey contours. N = Nioghalvfjærdsbræ, Z = Zachariae Isstrøm and S = Storstrømmen. The 5 km model domain for the North East Greenland drainage basin is shown in colours and the contour for the 50 m/yr surface velocity (from Joughin et al., 2010) is indicated with thick, black lines.

is equal to the driving stress τ_d

$$\tau_b = \tau_d = \rho g H \nabla s, \quad (1)$$

95 Where H is ice thickness, s is surface elevation, g is the gravitational constant, and ρ is the density. This assumption entails that stress components are neglected that may be important for an ice stream such as NEGIS. We return to this assumption and the impact it may have on our results in the discussion section. We then relate the stress to the strain rate using Glen’s law; $\dot{\epsilon}_{ij} = A \tau_{ij}^n$ and set the flow law exponent n equal to 3. The creep parameter A depends exponentially on the temperature of the ice, but also on water content, the hydrostatic pressure, impurity content and the ice rheology
100 (Cuffey and Paterson, 2010).

Secondly, we assume that the (vertically averaged) horizontal velocity vector \bar{u} is composed of two parts: a term caused by the internal deformation of the ice, \bar{u}_d , and a term derived from sliding over the bed, u_s , thus $\bar{u} = \bar{u}_d + u_s$. The deformational velocity takes the well-known form $\bar{u}_d = k_d H \tau_b^n$,
105 where k_d is related to the creep parameter A and thus also depends on temperature, water content etc. The sliding velocity u_s is approximated using a non-linear, “Weertman-type” sliding law (Weertman, 1957): $u_s \propto \frac{\tau_b^n}{\rho g H - P}$, in the following we assume that the basal water pressure P is a constant fraction of the ice load thus:

$$u_s = k_s \frac{\tau_b^n}{H} \quad (2)$$

110 Combining the equations above leads to an expression for the surface velocity of the form (Budd et al., 1979; Oerlemans, 2001):

$$\bar{u} = k_d H \tau_b^n + k_s \frac{\tau_b^n}{H} \quad (3)$$

We use the relation above to solve for the ice thickness as a function of time by considering ice-flow as a diffusion equation

$$115 \quad \frac{\partial H}{\partial t} = \nabla(\bar{u}H) + \dot{b}_i = \nabla(D\nabla s) + \dot{b}_i \quad (4)$$

where \dot{b}_i is the mass balance. Combining Eq. (1) with Eqs. (3) - (4) shows that D is related to the deformation and sliding mechanisms (e.g. Oerlemans, 2001):

$$D = (\rho g)^n H^n (\nabla s)^{n-1} (k_d H^2 + k_s) = D_d + D_s \quad (5)$$

120 Finally, we assume that the bedrock is unchanged in time thus any changes in surface elevation directly reflects changes in ice thickness $\partial H/\partial t = \partial s/\partial t$, further ignoring firn densification processes. Equation (4) is solved on a staggered grid using a Crank-Nicholson, second order, finite difference scheme, that is centralised except at the margins where upstream differencing is applied. We further note that the solution on a staggered grid introduces a smoothing that means that the model is not inherently mass-conserving.

125 2.1.1 Margin Control

On the spatial and temporal scales of our ice-flow model, margin dynamics cannot be expected to be accurately captured. We therefore introduce a discharge scheme to prevent unphysical build-up of mass at the margins by removing ice at every timestep. We adopt the following parameterisation from (Calov et al., 2014):

$$130 \quad d = c_0 \frac{H_0}{l^3} \quad (6)$$

where d is the discharge, H_0 is the ice thickness at the start of the model run (present day ice thickness), and l is the distance to the nearest ocean grid cell. We apply this discharge correction to all cells that are within 10 km of the ice sheet margin. The constant c_0 is then scaled such that the total discharge out of the drainage basin is twice the size as the ablation. Especially at the start of 135 the model runs, the upstream differencing means that there is an unphysical build up of mass at the margin. To check this, we calculate the balance velocity in each time step, and remove grid cells where the change in ice thickness exceeds the balance influx by more than 500%. The grid cells are then replaced by the average ice thickness of the neighbouring cells.

2.1.2 Basal Sliding

140 The basal conditions of the system are determined by the value of the sliding coefficient k_s . We estimate the sliding coefficient k_s and the deformational coefficient k_d using a simple inverse approach. First, the model domain is divided into three areas based on observed surface velocities

(from Joughin et al., 2010): 1) areas where the velocity is less than 5 m yr^{-1} , 2) areas with velocities between 5 m yr^{-1} and 100 m yr^{-1} and 3) areas where the velocities exceed 100 m yr^{-1} . The division is based on the assumption that ice flowing at less than 5 m yr^{-1} is moving primarily by deformation, while ice flowing above 100 m yr^{-1} is mainly due to plug flow (cf. Joughin et al., 2001). This division is used as a weighting scheme for calculating the misfits between observed velocities v_{obs} and calculated velocities. The inversions are performed on the 1 km resolution topography data and subsequently regridded.

The deformational coefficient k_d is assumed to be constant in the entire model domain, and is calculated by minimising the misfit between observed and calculated deformational velocity \bar{u}_d , while neglecting the misfits in area 3, where ice-flow is dominated by sliding. The same approach is then applied in order to obtain a value for k_s but now it is the misfit between v_{obs} and $\bar{u} = \bar{u}_d + u_s$ that is assessed, while k_s is allowed to vary in each grid cell. The weighting scheme is reversed such that the fast flow areas (area 3) are weighted more than the intermediate flow areas (area 2), while slow flow areas are disregarded. For more information on the inverse method see the appendix.

2.2 Subglacial Water Routeways

The changes in the large-scale subglacial drainage pattern is assessed by considering the changes in the hydropotential. On large spatial scales (i.e. kilometre scale) water under ice-sheets can be assumed to follow the gradient of the hydrological pressure potential Φ defined as (Shreve, 1972)

$$\Phi = \rho_w g z_b + \rho_i g (z_s - z_b) \quad (7)$$

Where ρ_w and ρ_i are water and ice densities respectively, g is the gravitational constant and z_s, z_b are the elevations of ice surface and bed. The steepest down-slope gradient of the potential indicates the routeway of the water assuming that the subglacial water pressure is equal to the ice overburden pressure. Here we disregard smaller scale features such as the formation of channels and conduits. From Eq. (7) it can be seen that the surface slope is approximately 10 times more important than the slope of the bed topography, implying that unless the relief of the subglacial topography is steep, the surface slope controls the water routeways. Thus, to a first order the changes in subglacial drainage pattern is controlled by changes in surface slope.

We calculate the outflux of subglacial water at the fjord outlets using the simple, central difference flux calculation by Budd and Warner (1996) modified to follow the hydropotential instead of surface elevation. This scheme has been shown to be the most suitable for calculating fluxes across profiles, since it is consistent for different orientations and resolutions, which is not always a given for routing schemes (Le Brocq et al., 2006). We use the routing scheme to calculate the distribution of subglacial water (for a given basal melt configuration, see below) every 100 model years. This allows us to calculate the outflux of subglacial water at the margins of the model domain over time and thereby investigate the changes in outflux.

2.3 Model Runs

The model run consists of three parts: 20 kyr of initialisation, 20 kyr with increasing basal sliding and a final 10 kyr of no forcing. The initialisation is performed in order to obtain an ice sheet configuration consistent with our numerical scheme. Since we wish to obtain realistic changes in ice surface elevation for changing basal sliding values, we want to start with an initial state dominated primarily by deformation. Once this initial state is obtained, we force the model with stepwise increasing basal sliding values over 20kyr using the results from the basal sliding inversion scheme.

185 Finally, we let the model run for another 10kyr without any change in forcing.

The results from the inversion are used to force the model in the second stage of our run not to initialise the model. In this section we elaborate why we adopted this approach: The sliding coefficient values obtained from the inverse scheme are based on the present-day observed topography. Thus, if the inversion scheme perfectly represents the basal sliding coefficient, we could use the results to

190 initialise the model and obtain a surface topography similar to present-day. This surface topography would be in agreement with our numerical scheme without the need for a relaxation time. However, our inversion was performed on a different resolution grid and subsequently regridded. Furthermore,

both the ice-flow model and the inversion scheme are approximate solutions to the full stress equations. It is therefore unlikely that the inversion scheme perfectly captures the basal sliding in the

195 entire basin, and the ice-flow model will consequently need a relaxation time in order for the numerical scheme to reflect the surface topography. During this relaxation phase, any change in surface topography could be due to the relaxation and not the response of the ice surface to changes in basal conditions. Thus, it would not be possible to attribute the changes in ice sheet elevation directly to the imposed change in basal condition. This would directly impede our aim of obtaining realistic

200 changes in ice surface elevation for changing basal sliding values.

Accordingly, our model run is as follows: Using the present day surface topography, we do a spin-up run over 20 kyr with a where the low sliding coefficient (cf. Fig. 2) is set to $10^{-11} \text{ Pa}^{-3} \text{ m}^2 \text{ yr}^{-1}$ or less. During the spin-up the ice flow model is run on two grids; a 10 km grid for the entire GrIS and a 5 km grid for the model domain encompassing the North East Greenland basin (shown in colours

205 in Fig. 1). At every model year the grid cells along the drainage basin boundary are updated with the result from the 10 km model downscaled to the 5 km grid by linear interpolation. The drainage basin boundaries are assumed to not shift position over time. In this way, we obtain a simulated steady-state ice-sheet whose shape is in agreement with the numerical scheme of our model, and not substantially influenced by basal sliding.

210 We then perform our simulation of changing basal conditions starting from the steady-state ice-sheet configuration obtained from the spin-up. We decouple the nested regional 5 km model from the 10 km resolution ice-sheet model and the surface elevation is now kept constant along the basin boundary. The maximum allowed sliding coefficient value k_s is now increased in small steps every 1000 model years for 20 kyr. For the first 1000 model years after the spin-up all basal sliding co-

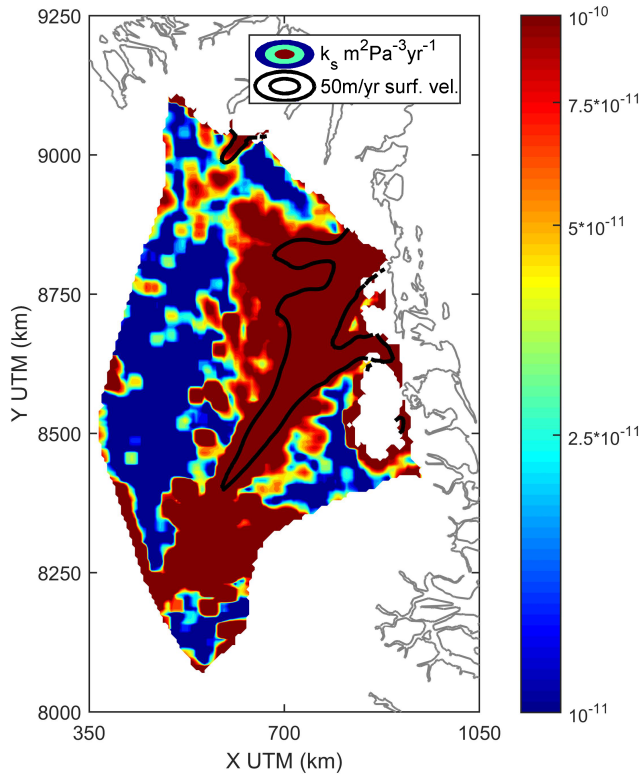


Fig. 2. The result of the inversion for the sliding coefficient k_s on a logarithmic scale. The contour for the 50 m/yr surface velocity (from Joughin et al., 2010) is indicated with thick, black lines.

215 efficient values that exceed $1.25 \cdot 10^{-11} \text{ Pa}^{-3} \text{ m}^2 \text{ yr}^{-1}$ are set to $1.25 \cdot 10^{-11} \text{ Pa}^{-3} \text{ m}^2 \text{ yr}^{-1}$ and, after another 1000 years, all values that exceed $1.5 \cdot 10^{-11} \text{ Pa}^{-3} \text{ m}^2 \text{ yr}^{-1}$ are set to $1.5 \cdot 10^{-11} \text{ Pa}^{-3} \text{ m}^2 \text{ yr}^{-1}$ and so forth. When the basal sliding is increased in the subsequent model run, we can then assume that the corresponding changes in surface elevation directly reflect the response of the model domain to the changes in basal conditions. Finally, after 20 kyr the sliding coefficient is kept
 220 constant and the model is run for another 10 kyr. This last stage of the model simulation is what we refer to, when we use the term “no external forcing”, because no further changes are imposed on the basal conditions, although margin loss and mass balance field are still applied.

3 Results

3.1 Sliding Coefficient

225 Using a simple inversion technique described in Appendix A, we obtain an estimate of the coefficients k_d and k_s . The result of the inversion gives a value of $k_d = 2.3 \cdot 10^{-17} \text{ yr}^{-1} \text{ Pa}^{-3}$. For comparison, empirical studies by Budd et al. (1979) reported a value of $k_d = 6.0 \cdot 10^{-17} \text{ yr}^{-1} \text{ Pa}^{-3}$. This corresponds to creep parameter values of $A = 1.82 \cdot 10^{-24} \text{ s}^{-1} \text{ Pa}^{-3}$ and $A = 4.75 \cdot 10^{-24} \text{ s}^{-1} \text{ Pa}^{-3}$

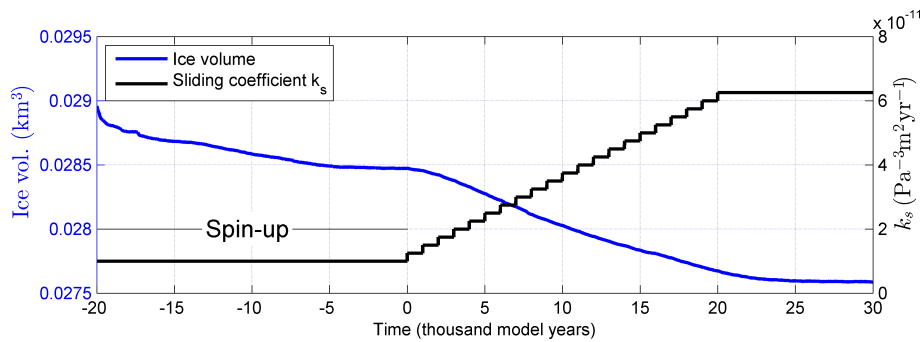


Fig. 3. Change in ice volume (blue) of the NE Greenland model domain caused by the change in sliding coefficient (black) for the entire model run.

respectively. Considering that our estimate applies to the entire drainage basin and that the creep parameter A varies orders of magnitude depending on ice temperature (Cuffey and Paterson, 2010), we consider this discrepancy to be within the expected uncertainty of our method. Further, we note that the creep parameter values correspond to ice temperatures between -2 and 0 degrees Celsius (Cuffey and Paterson, 2010).

The results from inverting for the sliding coefficient k_s are shown in Fig. 2. Note that the solution has been regridded to 5 km from the original 1 km solution (see also above) and smoothed with a running mean to impose a degree of smoothness. Our values are within the range of values typically found models of subglacial settings, and also comparable to laboratory experiments, that suggest a value of $k_s = 1.8 \cdot 10^{-12} \text{ Pa}^{-3} \text{ m}^2 \text{ yr}^{-1}$ (Budd et al., 1979). This experimental value has been found to agree well with observations from real glaciers (Bindschadler, 1983), although the value is likely very variable for different glacier settings. Even so, our results indicate a high degree of basal sliding. In this experiment the coefficient has been allowed to vary spatially in the model domain to produce the best fit between observed and modelled velocities. It is clear that large parts of the basin has a very high sliding coefficient, notably the fast flowing areas of NEGIS, indicating high basal velocities. North of NEGIS a large area obtains a low sliding coefficient, indicating that ice deformation is likely more important here than in the ice stream. This pattern is similar to that recovered by previous studies (e.g. Joughin et al., 2001; Schlegel et al., 2013). The area along the ice divide with high basal sliding coefficients is caused by the low surface gradient (leading to an underestimation of modelled velocities) rather than actual large sliding velocities.

3.2 Changes in Ice Volume and Surface Elevation

In the spin-up run the ice-flow model is initiated with a low value of k_s ($k_s = 1 \cdot 10^{-11} \text{ m}^2 \text{ yr}^{-1} \text{ Pa}^{-3}$), and we thus obtain a state where the ice-flow in the model domain is not materially influenced by basal sliding. When the model is initiated there is a drop in ice volume (Fig. 3) as the ice withdraws from the poorly resolved outlets along the margin. The discharge scheme is probably also overesti-

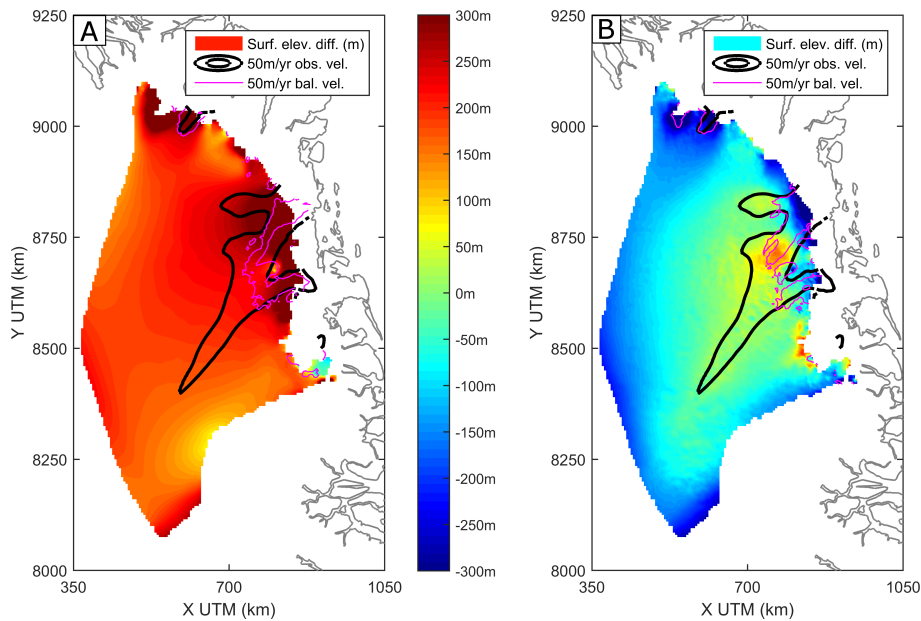


Fig. 4. Difference in surface elevation between the ice-sheet at the end of the spin-up run (A), respectively at the end of the model run (B), and present day topography. The contour for the observed 50 m/yr surface velocity (from Joughin et al., 2010) is indicated with thick, black lines, magenta lines indicate the 50 m/yr balance velocity contour.

imating the mass loss for some of the margin cells, which further adds to the retreat at the margins.

255 After approximately 17 kyr the ice volume stabilises and after 20 kyr the change in volume is negligible (cf. Fig. 3, blue line). Due to the low sliding coefficient there is a build up of ice volume in areas where the ice-flow velocities are lower than present day. The surface elevation along the basin boundaries decrease slightly over the entirety of the spin-up run. This is because the 10 km model predicts lower elevation along the basin boundaries, leading to a lowering of the grid cells that are
 260 interpolated from the 10 km model onto to the nested 5 km model. The build up of ice volume in the central part of the NEGIS naturally corresponds to an increase in surface elevation (cf. 4). As the maximum allowed sliding coefficient-values are increased the surface elevation decreases and the ice volume decreases correspondingly.

The resulting difference in elevation between present day topography and the surface elevation after
 265 the 20 kyr spin-up run and the 30 kyr run is shown in Fig. 4. The number of grid cells with a surface elevation difference larger than 200 m is less than 7% and 40% are within ± 100 m of the present day elevation. Finally, it should be noted that it was not possible to match the high velocities of the central part of the NEGIS, regardless of the sliding coefficient values. This is probably due to the combined effects from the simplifications in the ice-flow model and the fact that the deformational
 270 coefficient is too high in the fast flow areas, where the ice is likely softer. Thus, our model will always underestimate the ice-flow velocities in the central part of the ice stream.

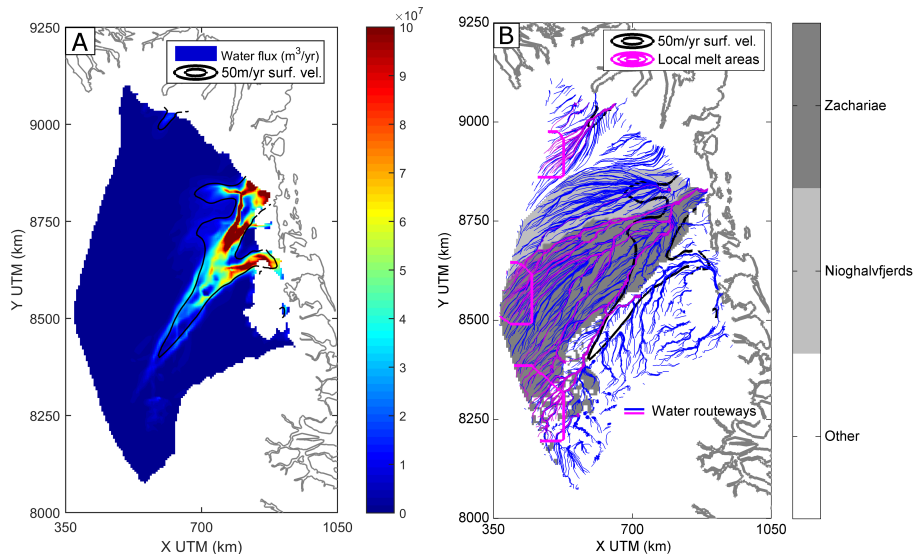


Fig. 5. (A) Subglacial water flux for upper values of basal melt rates. (B) Water routeways for the present day topography, the background colours indicate which outlet the subglacial water is draining into. The magenta contours indicate the areas of localised basal melt from the study by Oswald and Gogineni (2008). The contour for the 50 m/yr surface velocity (from Joughin et al., 2010) is indicated with thick, black lines.

To test the impact of the margin control algorithm we did an additional model run where the margins were kept constant after the spin-up, and we will refer to this run as the “constant margin run”. During the first 20 thousand model years the ice surface is lowering as the basal sliding coefficient is increased. Since the ice margin now is kept at constant thickness this means that the margin is thicker
 275 in the constant margin run compared to the initial model run. This thickness difference propagates hundreds of kilometres upstream over time-scales of 10^3 yr. When the basal sliding coefficient is no longer increased, the difference between the two model runs decrease as the margins thicken in the initial run. Throughout, the differences between the two modelled surfaces are of the order of 10^1 m
 280 and rarely exceed 20 m. Thus, while it is possible for changes at the margin to propagate upstream in our model, the changes are smaller than those observed for the changes in basal sliding. This implies that our margin control scheme is less important compared to the induced changes in basal sliding

3.3 Subglacial Water Outflux

The drainage pattern (Fig. 5b) and resulting outflux of subglacial water (Fig. 6) has been calculated
 285 using two scenarios: 1) assuming that the entire bed is at pressure melting point (blue lines in Figs. 5 and 6), as suggested by modelling studies (e.g., Greve, 2005; Seroussi et al., 2013), or 2) assuming that melting only occurs in localised areas (magenta lines in Figs. 5 and 6) as indicated by radio-echo sounding data (Oswald and Gogineni, 2012). In both cases we assume a melt rate of 5 mm/yr from each melting grid cell. This is based on values of basal melt rates of 5 mm/yr at the North Greenland

290 Ice Core Drilling site (Buchardt and Dahl-Jensen, 2007), although studies have found evidence for
melt rates up to 150 mm/yr at the onset of NEGIS (Fahnestock et al., 2001). We consider our as-
sumed melt rate to represent the lower end of the possible melt rates. This assumption is based on a
rough estimate of energy available for melting the basal ice; we use the sliding coefficient found in
the section above to calculate the basal velocity $u_b = u_s$, and the frictional heat $E = u_b \cdot \tau_b$. Assum-
295 ing that the ice is at pressure melting point and that all energy generated by the friction between ice
and bed is used to melt ice (i.e. we disregard dissipation of heat), we get an upper value of possible
melt rates. This returns melt rates of between 0 - 0.1 m/yr in areas of intermediate flow (20 m/yr -
100 m/yr) and upwards of 1 m/yr in the fastest flowing areas. Figure 5a shows the flux of subglacial
water using this upper limit estimate. Note how the subglacial water is routed along the shear mar-
300 gins in agreement with observations from the field (Christianson et al., 2014).

Figure 5 shows the routeways that the subglacial water follows based on present day surface to-
pography (Bamber et al., 2013a). It is evident that some parts of the basin has a drainage pattern
resembling a “parallel” drainage system (e.g., the northern margin of NEGIS) where the water fol-
lows almost straight lines indicating steep gradients in the hydropotential. In contrast, other parts of
305 the basin have a more dendritic structure with multiple tributaries. Here the hydropotential has less
steep slopes and the resulting drainage pattern is therefore less constrained. From the figure it can
also be seen that presently a large part of the subglacial water is exiting at Zachariae ice stream (dark
grey), while less water feeds into Nioghalvfjærdsbrae (light grey). Further, if only localised areas
are contributing with subglacial water (as identified by radio-echo sounding (Oswald and Gogineni,
310 2008)), very little water is presently exiting into Nioghalvfjærdsfjord.

Figure 6 shows the change in outflux over time for the three major glacier outlets of NEGIS, cal-
culated using a routing scheme (as described above). Please note that in the following discussion of
variations in the flux over time the constant basal melt rates of 5 mm/yr was used. We set up three
flux gates at the glacier outlets close to the margin such that all subglacial water that passes through
315 the flux gates continue towards the margin. The figure shows the total volume of water that passes
through a given flux gate. We have further assumed that changes in water transport are instantaneous
compared to the time-scale of ice-flow

We have assumed that changes in water transport are instantaneous compared to the time-scale
of ice-flow. Over all, the water outflow shows large variations on time-scales from ranging from
320 decades to millennia. This is in agreement with previous studies, which have also found a potential
for changes in drainage pattern (Livingstone et al., 2013; Christianson et al., 2014).

As the basal sliding increases with time, the outflux of subglacial water increases at the margins.
This happens both in the scenario where the entire basin is assumed to be melting and in the sce-
nario where only the localised melt areas in the interior are supplying basal melt water. At the end of
325 the spin-up run most of the subglacial water generated along the ice divide flows towards the west.
This is a consequence of the 10 km resolution model generally predicting lower surface elevation

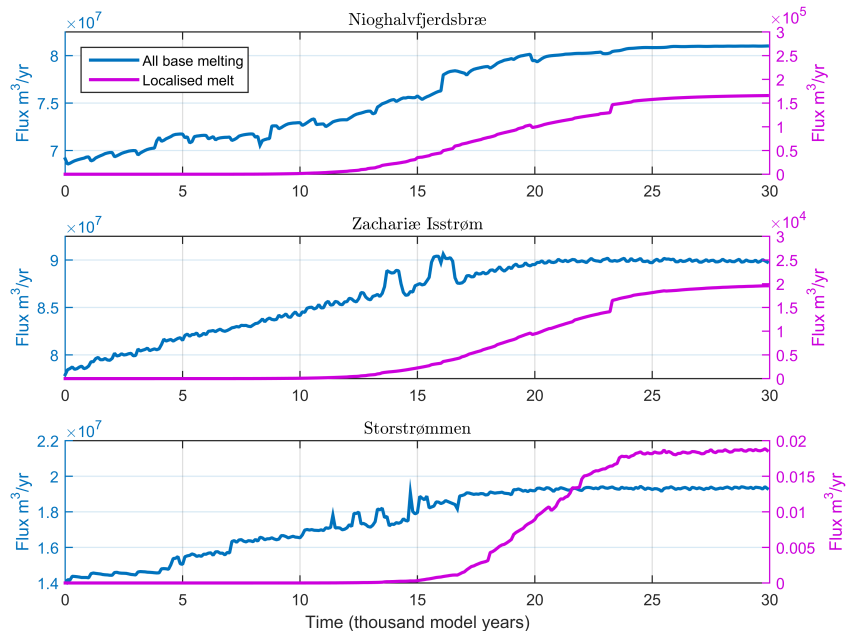


Fig. 6. Change in subglacial water outflux at the three main outlets of NEGIS during the 30 kyr model run. The blue lines indicate the changes if the entire basin is at melting point and contributing to the outflux, while the magenta lines are the outflux if only certain local areas are melting.

than present day, leading to a surface sloping towards the west. This implies that at the end of the spin-up run, the basin boundary has migrated inwards and part of the ice is now flowing out of the model domain towards the west. As the sliding coefficient is increased, the ice stream forms and the surface slope now allows more water to flow eastwards thus increasing the outflux of subglacial water at the margins.

After 20 kyr the basal conditions are kept constant and the ice-flow is allowed to adjust without forcings and after a few thousand years the ice-flow model shows surface elevation changes of the order of 10^{-1} m/yr or less. We interpret this as a sign that the model is approaching steady state. However, even after several thousands of years with no external forcing the subglacial water outflux continues to fluctuate. This highlights the sensitivity of the subglacial system to small changes in surface slope. We emphasise that while our simple ice-flow model does not capture the complicated ice-flow dynamics of present day, the subglacial water fluctuations are a result of the drainage basin topography.

We now investigate whether the subglacial water from different grid cells is likely to exit at different glacier outlets. Using time slices of 100 yr over the 30 kyr run we calculate which fjord the subglacial water from each grid cell exits into. Figure 7a shows the grid cells where there is a change in outlet destination. For 18% of grid cells (Fig. 7a, blue dots) the majority of the produced sub-

glacial water fluctuate between two outlets. The dots clearly delineate the subglacial “watersheds”
345 between the different outlets. For 2% (Fig. 7a, red dots) fluctuate between three different outlets.
Notably, many of the cells that change end destination are relatively close to the ice divide, upstream
of NEGIS. This is also in close proximity to the area of high geothermal heat flux identified by
Fahnestock et al. (2001), where basal melting is known to take place.

In the previous section (cf. Eq. (7)) we asserted that the surface slope is approximately 10 times
350 more important than the bed slope when determining the water routeways. However, in some areas
the bed slope is so steep that the bed topography eventually becomes equally or more important than
the surface topography. Closer inspection of the topography of the model domain reveals that this is
indeed the case in some areas. Magenta dots in Fig. 7b indicate the location of the critical grid cells
where the bed slope is equally or more important than the surface slope, i.e. where $\frac{(\rho_w - \rho_i) \nabla z_b}{\rho_i \nabla z_s} \approx 1$.
355 A large number of these critical points are located in the southern part of the model domain, although
some are also located in the main part of the ice stream.

Fig. 7 also shows the error associated with the bed topography dataset from Bamber et al. (2013a).
This error is caused by the fact that for some of the bed topography measurements the surface ele-
vation is not well-known (Bamber et al., 2013a). When comparing the bedrock error with the grid
360 cells where the subglacial water is likely to change end destination, it is clear that very few of these
grid cells coincide with areas of large bedrock error, implying that the calculated subglacial water
routeways in this region are particularly uncertain. In contrast, a large number of the grid cells that
are sensitive to the bedrock slope coincide with areas where the bed topography is associated with
large errors, implying that the calculated subglacial water routeways in this region are particularly
365 uncertain.

4 Discussion

Our simple model experiment highlights some interesting characteristics of the large-scale subglacial
drainage pattern of North East Greenland. Our results indicate that the outflux of subglacial water
may fluctuate for several thousand years even after external forcings have ceased. We also observe
370 that the subglacial water from multiple grid cells exit at different glacier outlets (Fig. 7a) during our
30 kyr model run. Interestingly, we find that the grid cells that are most likely to fluctuate between
three different outlets are located close to the ice divide. The water routeways at these cells are pri-
marily controlled by surface slope, implying that changes in surface slope is the determining factor
for the direction of the subglacial water. As mentioned in a previous section the ice geometry at the
375 end of the spin-up run has a basin boundary inward of the area covered by the model domain. This
new boundary, however, does not extend as far as the area marked with red points in Fig. 7a. Thus,
the points closest to the ice divide change outlets because of this boundary migration, i.e. due to the
spin-up surface geometry, but the remaining points change outlet due to the internal dynamics in the

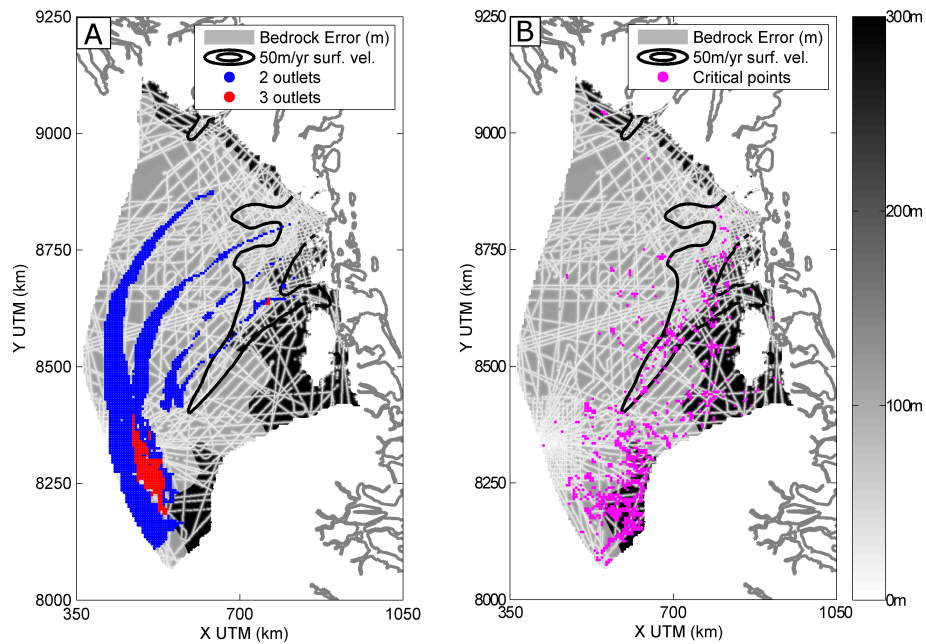


Fig. 7. The error associated with the bedrock topography from Bamber et al. (2013a) in grey colours. Left: Coloured dots indicate grid cells where the subglacial water routeways change between two (blue dots) or three (red dots) outlets. The contour for the 50 m/yr surface velocity (from Joughin et al., 2010) is indicated with thick, black lines. Right: Magenta dots indicate grid cells where the bed slope is equally or more important than the surface slope in determining the direction of the subglacial water.

model domain. This indicates the possibility for far field controls on the subglacial water system of
 380 NEGIS, and that variations in subglacial water outflux at the outlets of Nioghalvfjærdsbræ, Zachariae
 Isbræ and Storstrømmen may be caused by changes in surface elevation several hundred kilometres
 upstream. Thus, observed changes at the margins in, for example, water outflux or ice-flow velocity,
 are not necessarily caused by processes that can be observed within the same spatial and temporal
 scale as the changes.

385 In our model run, an increase in basal sliding generally leads to a lowering of the ice surface. We
 hypothesise that the formation of the ice stream could have happened as a positive feedback effect,
 where the introduction of subglacial water at the bed (i.e. increase in basal sliding) led to a lowering
 of surface elevation, leading to more subglacial water being rerouted into the system. This in turn
 might lead to a further lowering of the surface and thereby more subglacial water. However, since
 390 our model does not include feedbacks between the subglacial system and ice-flow, we cannot truly
 determine the formation mechanism. It is worth noting that we do not observe “water piracy” in the
 sense described by Anandakrishnan and Alley (1997) where neighbouring ice streams slow down or
 speed up when they exchange subglacial water. We also investigated our results for evidence of “ice
 piracy” where the increase in ice flux for one ice stream happens at the expense of a neighbouring

395 ice stream (e.g. Pattyn et al., 2005). However, the three glacier outlets all showed increasing ice
fluxes, as the ice stream became more pronounced with increased basal sliding. There might be a
potential for ice piracy between NEGIS and Hagen Bræ/Academy Glacier in the northern part of the
basin, but this outlet glacier is not well resolved on the 5 km grid resolution, and we do not observe
evidence of ice piracy in our model results. We would like to stress that the channeling of subglacial
400 water includes processes that are still poorly understood, but which may strongly influence the time-
scales of the changes in ice-flow dynamics. Our model most likely underestimates the time-scales
over which these processes are taking place, since it does not include feedback between the ice-flow
dynamics and the subglacial system.

405 In the ice-flow model the driving stress is assumed equal to the basal shear stress in the direction
of flow. Ice streams are commonly modelled using a shallow-shelf approach where the basal shear
stress is assumed to be negligible (e.g. MacAyeal, 1989) and sliding is dominating. However, studies
have found that in large parts of the NEGIS the basal shear stress is balanced by the driving stress
(Joughin et al., 2001). Our assumption is thus applicable for a large part of our model domain, with
410 two notable exceptions.

The first exception is the upper part of NEGIS close to the initiation of the ice stream, where side
drag from the margins cannot be neglected. Here, the bed most likely only support 60% of the driv-
ing stress. This exception is probably an important contributing factor in explaining why our model
does not display a distinct onset of the ice stream. The missing ice stream onset means that our
415 modelled surface topography is smoother than it would be, if the onset existed.

The second exception is the “ice plain” (located downstream of the place where part of NEGIS
branches out and forms Storstrømmen). In this area, the stresses are dominated by significant side
drag (Joughin et al., 2001). This explains why we see a build-up of mass in the central part of the
ice stream (Fig. 4b), since inclusion of additional stresses probably would lead to more efficient
420 transport of ice across the ice plain. For the ice plain our model assumptions mean an underesti-
mation of ice-flow velocities and the associated time-scales over which changes in ice thickness are
happening.

To summarise, a higher-order ice-flow model would most likely display a faster formation of the
NEGIS, as well as a steeper gradients in the hydropotential in the region where our modelled surface
425 topography is too smooth. This could impact the modelled change in subglacial water routeways of
the grid cells identified in Fig. 7a. It is possible that some of the grid cells located close to the onset
of the ice stream are less sensitive to changes in surface slope than predicted in our model. This is
because a more pronounced ice stream topography would cause steeper gradients in the hydropo-
tential and a more constrained subglacial drainage pattern. However, we note that water routeways
430 north of the onset do not currently drain into NEGIS, in spite of the prominent imprint the ice stream
makes on the surface (cf. Fig. 5b). This makes us confident that our assessment of the sensitivity of

the grid cells north of the onset of NEGIS is correct, i.e., that even for present day topography with steeper gradients in the hydropotential, they can still be sensitive to changes in surface slope. The subglacial water routeways originating at the grid cells along the margin of NEGIS are probably less sensitive to changes in surface slope.

In our study, we have assumed that the subglacial water is transported to the glacier margin and does not form subglacial lakes. Pattyn (2008) suggested that steep surface slopes in combination with warmer, thinner ice in the interior of GrIS (compared to Antarctica) inhibit the formation of subglacial lakes. Indeed, at present only one study has found direct evidence for subglacial lakes in Greenland (Palmer et al., 2013). In our calculations of present day Greenland water routeways (Fig. 5b) the water routeways can be seen to pool together in the southeastern part of the drainage basin, indicating the possibility of subglacial lakes. Their positions correspond largely to areas identified by Livingstone et al. (2013) as potential lake locations. However, the areas likely to contain subglacial lakes in our study coincide not only with areas where the bed slope is equally or more important than the surface slope, but also with areas where the error in bed rock topography is upwards of 300 m (Fig. 7b). Thus, these subglacial lake locations are at best uncertain considering the large bedrock error in the region.

Previous studies have found that NEGIS has the potential to experience rapid shifts in ice dynamics (Christianson et al., 2014). While the step-wise change in sliding coefficient that we apply to induce surface elevation changes is an unlikely scenario, a change in surface elevation could be triggered by a number of processes. For example, studies by Alley and Whillans (1984) and Williams et al. (2012) have found that processes happening over centuries to millennia at the front of ice streams may trigger changes in slope and thickness hundreds of kilometres inland from the margin. Thus, a steady increase in calving rate over the past few hundred years caused by, for example, warming sea surface temperatures, will propagate upstream and could eventually lead to a re-routing of the subglacial water, without any observable catastrophic or sudden change in forcing. This implies that if a retreat/advance happened slowly enough for the perturbation to propagate far upstream, we could still be observing the response of the subglacial system to the changes in surface elevation.

It is very plausible that retreats and advances have occurred in the past along the margin of Northeast Greenland. For example, geological evidence suggests that 7.7 kyr before present the margin of Nioghalvfjærdsbræen was 80 km upstream from its present location (Bennike and Björck, 2002). It is also known that glaciers in other parts of Greenland (e.g. Björk et al., 2012) advanced during the Little Ice Age. These changes must have influenced ice thicknesses in the drainage basin, but the extent of the impact is unknown. Furthermore, the duration of the margin changes are also unknown and therefore how far the surface fluctuations propagated upstream cannot be easily assessed. However, events such as these could have led to a change in surface slope, and, based on our results, caused a corresponding change in subglacial water routeways. This could ultimately have caused

a change in ice-flow velocities and ice stream configuration. Since these events may take centuries
470 to millennia to propagate upstream, it also seems likely that the surface slope is constantly modified by fluctuations from processes at the margin. It is therefore likely that the subglacial system is constantly changing in response to these fluctuations and likely never in a steady state. It further indicates that changes in the subglacial water routeways are an intrinsic part of the drainage basin dynamics, where the subglacial system is constantly transitioning between different configurations
475 of the subglacial water network. Thus, current observations of increase/decrease in velocity could be a delayed effect from changes taking place before the observational period, working their influence on critical points upstream of the glacier front.

The latest bed topography data show that some ice streams in Greenland are constrained by deep
480 troughs (e.g., Jakobshavn Isbræ, Gogineni et al., 2014), while other Greenlandic ice streams are not strongly controlled by bed topography (Bamber et al., 2013a). We therefore hypothesise that other drainage basins in Greenland also might experience subglacial rerouting of water and corresponding fluctuations in ice-flow velocities. The model presented here is a tool that could be applied to other parts of GrIS and thus the sensitivity of the subglacial drainage pattern in different drainage basins
485 could be assessed. Places of interest include the basin containing the Petermann and Humboldt Glaciers, and the glaciers on the northwest coast. Both of these areas could have potential for subglacial water rerouting. For example, studies have found that in Northern Greenland changes in the subglacial waterways are likely to have taken place during the last glacial maximum (cf. Bamber et al., 2013b). The method outlined in this paper could be used to investigate the change in
490 subglacial drainage patterns as the ice sheet retreated and thinned after the last glacial maximum to its present day state. Alternatively, the model could be applied to the whole of the ice sheet; During glacial times, GrIS most likely extended out onto the continental shelf and formed an icebridge with the Laurentide Ice Sheet (e.g., Dyke, 2004). The break up of this bridge most likely impacted the surface topography of the ice sheet and therefore also the subglacial water routeways. Finally,
495 the applicability of the model might be improved with the addition of a shallow-shelf mode (e.g., MacAyeal et al., 1996) in order to better capture the ice stream dynamics.

5 Conclusions

The dynamics of the North East Greenland drainage basin are receiving increased attention in recent years. Here, we investigate the response of the subglacial drainage pattern to changes in surface
500 elevation for North East Greenland using a simple, 2D map-plane ice-flow model. We use observed surface velocities to invert for the basal sliding coefficient k_s , and then run the ice-flow model forward in time with incremental increases in the basal sliding. We find that the subglacial water routeways readily change in response to fluctuations in surface slope. The fluctuations continue for

millennia after the forcing of the basal conditions have stopped. The results further show that areas
 505 close to the ice divide, upstream of the fast flowing NEGIS, may fluctuate between several glacier
 outlets, indicating the potential for far field controls on water outflux at the margins. Since changes
 at the margin may propagate upstream and modify surface slopes on multiple time-scales, our study
 highlights how fluctuations of the subglacial system are an intrinsic part of the ice-flow dynamics
 of North East Greenland due to the sensitivity to changes in surface slope. Thus, changes presently
 510 observed at the margin could be a response to upstream changes, induced by processes that occurred
 centuries to millennia ago. We strongly encourage future work to include these processes to obtain
 better controls on the time-scales of the system.

Appendix A

Inverting for the Deformation and Sliding Coefficients

515 We obtain our estimates of the deformational coefficient k_d and the sliding coefficient k_s with a
 simple inverse method using a Monte Carlo scheme (e.g. Tarantola, 2005). In the model we have
 an observed dataset \mathbf{d}^{obs} consisting of the velocity field from Joughin et al. (2010) and a modelled
 dataset $\mathbf{d}(\mathbf{m})$: the velocities calculated using model parameters \mathbf{m} . The misfit between the observed
 and the calculated dataset is assessed via the misfit function:

$$520 \quad S(\mathbf{m}) = \frac{1}{2} \sum_i \frac{(d_i^{obs} - d_i)^2}{s_i^2} \quad (\text{A1})$$

where i runs over all the grid cells in the model domain. The model explores the parameter space
 (the likely range of \mathbf{m}) with a random walk. Each result from the random walk is either accepted or
 rejected according to the Metropolis criterion:

$$P = \min\left(1, \frac{L(\mathbf{m}_{cur})}{L(\mathbf{m}_{test})}\right) \quad (\text{A2})$$

525 where \mathbf{m}_{cur} is the most recently accepted model, \mathbf{m}_{test} is the model being tested and L is the
 likelihood function given as:

$$L(\mathbf{m}) = c \exp(-S(\mathbf{m})) \quad (\text{A3})$$

here c is a normalisation constant that we set equal 1.

In our study we first find the deformational coefficient k_d using a pre-defined likely range of k_d -
 530 values. The coefficient is assumed to be constant for the entire basin, and it is used as input to
 calculate \bar{u}_d . The misfit between the observed and calculated velocities is assessed using the misfit
 function described above. Furthermore, a weighting mask is applied such that the misfit in low
 velocity areas are 4 times more important for the sum of the misfits than the intermediate velocity
 areas, while high velocity areas are disregarded in the fitting analysis. Once the misfits reach a steady

535 value the algorithm is halted and the resulting value of k_d is accepted.

Next, we use the k_d -value to run our simple model of calculated velocities $\bar{u} = \bar{u}_d + u_s$, where our model parameter now is k_s . Again, using a pre-defined likely range of k_s -values but this time allowing k_s to vary for each grid cell. Now the weighting scheme reversed and the fast flow areas becomes 4 times more important than the intermediate velocity areas, while the misfit in the slow
540 flow areas is disregarded. Again, the resulting value of k_s is accepted when the misfits no longer improve.

Acknowledgements. NBK is supported by European Research Council grant No. 246815 'Water Under the Ice'. The Centre for Ice and Climate is funded by the Danish National Research Foundation.

References

- 545 Alley, R. and Whillans, I. M.: Response of the East Antarctica ice sheet to sea-level rise, *Journal of Geophysical Research*, 89, 6487–6493, 1984.
- Alley, R. B., Blankenship, D. D., Bentley, C., and S.T., R.: Deformation of till beneath Ice Stream B, West Antarctica, *Nature*, 322, 57–59, 1986.
- Anandakrishnan, S. and Alley, R. B.: Stagnation of ice stream C, West Antarctica by water piracy, *Geophysical*
550 *Research Letters*, 24, 265–268, 1997.
- Bamber, J. L., Griggs, J. A., Hurkmans, R. T. W. L., Dowdeswell, J. A., Gogineni, S. P., I. Howat and, J. M., Paden, J., Palmer, S., Rignot, E., and Steinhage, D.: A new bed elevation dataset for Greenland, *The Cryosphere*, 7, 499–510, 2013a.
- Bamber, J. L., Siegert, M. J., Griggs, J. A., Marshall, S. J., and Spada, G.: Paleofluvial Mega-Canyon Beneath
555 the Central Greenland Ice Sheet, *Science*, 341, 997–999, 2013b.
- Bennike, O. and Björck, S.: Chronology of the last recession of the Greenland Ice Sheet, *Journal of Quater*, 17, 211–219, 2002.
- Bevan, S. L., Luckman, A. J., and Murray, T.: Glacier dynamics over the last quarter of a century at Helheim, Kangerdlugssuaq and 14 other major Greenland outlet glaciers, *The Cryosphere*, 6, 923–937, 2012.
- 560 Bindschadler, R.: The importance of pressurized subglacial water in separation and sliding at the glacier bed., *Journal of Glaciology*, 29, 3–19, 1983.
- Björk, A. A., Kjær, K. H., Korsgaard, N. J., Khan, S. A., Kjeldsen, K. K., Andresen, C. S., Box, J. E., Larsen, N. K., and Funder, S.: An aerial view of 80 years of climate-related glacier fluctuations in southeast Greenland, *Nature Geoscience*, 5, 427–432, 2012.
- 565 Bolch, T., Sandberg Sørensen, L., Simonsen, S. B., Mölg, N., Machguth, H., Rastner, P., and Paul, F.: Mass loss of Greenland's glaciers and ice caps 2003-2008 revealed from ICESat laser altimetry data, *Geophysical Research Letters*, 40, 875–881, 2013.
- Bougamont, M., Price, S., Christoffersen, P., and Payne, a. J.: Dynamic patterns of ice stream flow in a 3-D higher-order ice sheet model with plastic bed and simplified hydrology, *Journal of Geophysical Research*,
570 116, F04018, 2011.
- Buchardt, S. L. and Dahl-Jensen, D.: Estimating the basal melt rate at NorthGRIP using a Monte Carlo technique, *Annals of Glaciology*, 45, 137–142, 2007.
- Budd, W. F. and Warner, R. C.: A computer scheme for rapid calculations of balance-flux distributions, *Annals of Glaciology*, 23, 21–27, 1996.
- 575 Budd, W. F., Keage, P. L., and Blundy, N. A.: Empirical studies of ice sliding, *Journal of Glaciology*, 23, 157–170, 1979.
- Calov, R., Robinson, A., Perrette, M., and Ganopolski, A.: Simulating the Greenland ice sheet under present-day and palaeo constraints including a new discharge parameterization, *The Cryosphere Discussions*, 8, 1151–1189, 2014.
- 580 Christianson, K., Peters, L. E., Alley, R. B., Anandakrishnan, S., Jacobel, R. W., Riverman, K. L., Muto, A., and Keisling, B. a.: Dilatant till facilitates ice-stream flow in northeast Greenland, *Earth and Planetary Science Letters*, 401, 57–69, 2014.
- Clarke, G. K.: Subglacial Processes, *Annual Review of Earth and Planetary Sciences*, 33, 247–276, 2005.

- Cuffey, K. M. and Paterson, W. S. B.: *The Physics of Glaciers*, Butterworth-Heinemann, 2010.
- 585 Dahl-Jensen, D., Gundestrup, N., Gogineni, S. P., and Miller, H.: Basalmelt at NorthGRIP modeled from borehole, ice-core and radio-echo sounder observations, *Annals of Glaciology*, 37, 207–212, 2003.
- de Fleurian, B., Gagliardini, O., Zwinger, T., Durand, G., Le Meur, E., Mair, D., and Råback, P.: A double continuum hydrological model for glacier applications, *The Cryosphere*, 8, 137–153, 2014.
- Dyke, A. S.: *Quaternary Glaciations: Extent and Chronology*, vol. 2, pp. 373–424, Elsevier, 2004.
- 590 Ettema, J., van den Broeke, M. R., van Meijgaard, E., van de Berg, W. J., Bamber, J. L., Box, J. E., and Bales, R. C.: Higher surface mass balance of the Greenland ice sheet revealed by high-resolution climate modeling, *Geophysical Research Letters*, 2009.
- Fahnestock, M., Bindschadler, R., Kwok, R., and Jezek, K.: Greenland Ice Sheet Surface Properties and Ice Dynamics from ERS-1 SAR Imagery, *Science*, 262, 1530–1534, 1993.
- 595 Fahnestock, M., Abdalati, W., Joughin, I., Brozena, J., and Gogineni, P.: High Geothermal Heat Flow, Basal Melt, and the Origin of Rapid Ice Flow in Central Greenland, *Science*, 294, 2338–2342, 2001.
- Gogineni, S., Tammana, D., Braaten, D., Leuschen, C., Akins, T., Legarsky, J., Kanagaratnam, P., Stiles, J., Allen, C., and Jezek, K.: Coherent radar ice thickness measurements over the Greenland ice sheet, *Journal of Geophysical Research*, 106, 33 761–33 772, 2001.
- 600 Gogineni, S., Yan, J.-B., Paden, J. D., Leuschen, C., Li, J., Rodriguez-Morales, F., Braaten, D., Purdon, K., Wang, Z., Liu, W., and Gauch, J.: Bed topography of Jakobshavn Isbræ, Greenland, and Byrd Glacier, Antarctica, *Journal of Glaciology*, 60, 813–833, 2014.
- Greve, R.: Relation of measured basal temperatures and the spatial distribution of the geothermal heat flux for the Greenland ice sheet, *Annals of Glaciology*, 42, 2005.
- 605 Greve, R. and Hutter, K.: Poly thermal three-dimensional modelling of the Greenland ice sheet with varied geothermal heat flux, *Annals of Glaciology*, 21, 8–12, 1995.
- Gulley, J., Benn, D., Screaton, E., and Martin, J.: Mechanisms of englacial conduit formation and their implications for subglacial recharge, *Quaternary Science Reviews*, 28, 1984–1999, 2009.
- Hanna, E., Navarro, F. J., Pattyn, F., Domingues, C. M., Fettweis, X., Ivins, E. R., Nicholls, R. J., Ritz, C.,
610 Smith, B., Tulaczyk, S., Whitehouse, P. L., and Zwally, H. J.: Ice-sheet mass balance and climate change., *Nature*, 498, 52–59, 2013.
- Iverson, N. R. and Petersen, B. B.: A new laboratory device for study of subglacial processes: first results on ice–bed separation during sliding, *Journal of Glaciology*, 57, 1135–1146, 2011.
- Joughin, I., Fahnestock, M., MacAyeal, D., Bamber, J. L., and Gogineni, P.: Observation and analysis of ice
615 flow in the largest Greenland ice stream, *Journal of Geophysical Research*, 106, 34 021–34 034, 2001.
- Joughin, I., Smith, B. E., Howat, I. M., Scambos, T., and Moon, T.: Greenland flow variability from ice-sheet-wide velocity mapping, *Journal of Glaciology*, 56, 415–430, 2010.
- Keisling, B. A., Christianson, K. A., Alley, R. B., Peters, L. E., Christian, J. E. M., Anandkrishnan, S., Riverman, K. L., Muto, A., and Jacobel, R. W.: Basal conditions and ice dynamics inferred from radar-derived internal stratigraphy of the northeast Greenland ice stream, *Annals of Glaciology*, 55, 127–137,
620 2014.
- Khan, S. A., Kjaer, K. H., Bevis, M., Bamber, J. L., Wahr, J., Kjeldsen, K. K., Bjork, A. A., Korsgaard, N. J., Stearns, L. A., van den Broeke, M. R., Liu, L., Larsen, N. K., and Muresan, I. S.: Sustained mass loss of the

- northeast Greenland ice sheet triggered by regional warming, *Nature Climate Change*, 4, 292–299, 2014.
- 625 Larour, E., Utke, J., Csatho, B., Schenk, A., Seroussi, H., Morlighem, M., Rignot, E., Schlegel, N., and Khazendar, A.: Inferred basal friction and surface mass balance of the Northeast Greenland Ice Stream using data assimilation of ICESat (Ice Cloud and land Elevation Satellite) surface altimetry and ISSM (Ice Sheet System Model), *The Cryosphere*, 8, 2335–2351, 2014.
- Le Brocq, A. M., Payne, A. J., and Siegert, M. J.: West Antarctic balance calculations: Impact of flux-routing algorithm, smoothing algorithm and topography, *Computers & Geosciences*, 32, 1780–1795, 2006.
- 630 Livingstone, S. J., Clark, C. D., Woodward, J., and Kingslake, J.: Potential subglacial lake locations and meltwater drainage pathways beneath the Antarctic and Greenland ice sheets, *The Cryosphere*, 7, 1721–1740, 2013.
- MacAyeal, D. R.: Large-Scale Ice Flow Over a Viscous Basal Sediment: Theory and Application to Ice Stream B, Antarctica, *Journal of Geophysical Research*, 94, 4071–4087, 1989.
- 635 MacAyeal, D. R., Hulbe, C. L., Huybrechts, P., Rommelaere, V., Determann, J., and Ritz, C.: An ice-shelf model test based on the Ross ice shelf, *Annals of Glaciology*, 23, 46–51, 1996.
- Oerlemans, J.: *Glaciers & Climate Change*, Taylor & Francis, 1 edn., 2001.
- Oswald, G. and Gogineni, S.: Mapping Basal Melt Under the Northern Greenland Ice Sheet, *IEEE Transactions on Geoscience and Remote Sensing*, 50, 585–592, 2012.
- 640 Oswald, G. K. A. and Gogineni, S. P.: Recovery of subglacial water extent from Greenland radar survey data, *Journal of Glaciology*, 54, 94–106, 2008.
- Palmer, S. J., Dowdeswell, J. A., Christoffersen, P., Young, D. A., Blankenship, D. D., Greenbaum, J. S., Benham, T., Bamber, J., and Siegert, M. J.: Greenland subglacial lakes detected by radar, *Geophysical Research Letters*, 40, 2013.
- 645 Pattyn, F.: Investigating the stability of subglacial lakes with a full Stokes ice-sheet model, *Journal of Glaciology*, 54, 2008.
- Pattyn, F., de Brabander, S., and Huyghe, A.: Basal and thermal control mechanisms of the Ragnhild glaciers, East Antarctica, *Annals of Glaciology*, 40, 225–231, 2005.
- 650 Rignot, E. and Kanagaratnam, P.: Changes in the velocity structure of the Greenland Ice Sheet., *Science (New York, N.Y.)*, 311, 986–990, 2006.
- Schlegel, N.-J., Larour, E., Seroussi, H., Morlighem, M., and Box, J. E.: Decadal-scale sensitivity of Northeast Greenland ice flow to errors in surface mass balance using ISSM, *Journal of Geophysical Research: Earth Surface*, 118, 667–680, 2013.
- 655 Schoof, C.: Ice-sheet acceleration driven by melt supply variability, *Nature*, 438, 803–806, 2010.
- Seroussi, H., Morlighem, M., Rignot, E., Khazendar, a., Larour, E., and Mouginot, J.: Dependence of century-scale projections of the Greenland ice sheet on its thermal regime, *Journal of Glaciology*, 59, 1024–1034, 2013.
- Shreve, R. L.: Movement of Water in Glaciers, *Journal of Glaciology*, 11, 205–214, 1972.
- 660 Tarantola, A.: *Inverse Problem Theory and Methods for Model Parameter Estimation*, SIAM Society for Industrial and Applied Mathematics, 2005.
- van den Broeke, M., Bamber, J., Ettema, J., Rignot, E., Schrama, E., van de Berg, W. J., van Meijgaard, E., Velicogna, I., and Wouters, B.: Partitioning Recent Greenland Mass Loss, *Science*, 326, 984–986, 2009.

- Vaughan, D., Comiso, J., Allison, I., Carrasco, J., Kaser, G., Kwok, R., Mote, P., Murray, T., Paul, F., Ren, J.,
665 Rignot, E., Solomina, O., Steffen, K., and Zhang, T.: *Climate Change 2013: The Physical Science Basis. Contribution of Working Group I to the Fifth Assessment Report of the Intergovernmental Panel on Climate Change*, chap. *Observations: Cryosphere*, pp. 317–382, Cambridge University Press, Cambridge, United Kingdom and New York, NY, USA., 2013.
- Vaughan, D. G., Corr, H. F., Smith, A. M., Pritchard, H. D., and Shepherd, A.: Flow-switching and water piracy
670 between Rutford Ice Stream and Carlson Inlet, West Antarctica, *Journal of Glaciology*, 54, 41–48, 2008.
- Weertman, J.: On the sliding of glaciers, *Journal of Glaciology*, 3, 33–38, 1957.
- Williams, C. R., Hindmarsh, R. C. A., and Arthern, R. J.: Frequency response of ice streams, *Proceedings of the Royal Society A*, 468, 3285–3310, 2012.
- Winsborrow, M. C., Clark, C. D., and Stokes, C. R.: What controls the location of ice streams?, *Earth-Science*
675 *Reviews*, 103, 45–59, 2010.
- Wright, A. P., Siegert, M. J., Brocq, A. M. L., and Gore, D. B.: High sensitivity of subglacial hydrological pathways in Antarctica to small ice-sheet changes, *Geophysical Research Letters*, 35, 2008.
- Zwally, H. J., Abdalati, W., Herring, T., Larson, K., Saba, J., and Steffen, K.: Surface melt-induced acceleration of Greenland ice-sheet flow., *Science*, 297, 218–222, 2002.

Authors' replies to reviewers' comments to

“Response of the large-scale subglacial drainage system of North East Greenland to surface elevation changes”

By N. B. Karlsson and D. Dahl-Jensen, *The Cryosphere Discussions*, vol. 9, 2015

Reviewer 1

General comments

The paper describes the application of an ice flow model to investigate the impact of changes in the ice sheet surface on the subglacial hydrologic system of the North East Greenland Ice Stream. The topic is of interest and is well justified in the introduction. The paper uses a simple ice flow model and assumes the water is at overburden pressure. The simplicity of the approach allows an easy understanding of what is going on in the system, so while some of the assumptions (e.g. using shallow ice) are perhaps known to not represent the system well, the paper is open about the deficiencies and justifies why they shouldn't impact on the work too much.

The simplicity in the approach should allow a number of different scenarios to be investigated, however, there is really only one experiment carried out in this paper which limits the conclusions to a very general finding, which perhaps one could have reached intuitively anyway without the need for the model. The paper is largely well written, but the experiment is not clearly explained which led me to have to try and work out what had been done.

*The paper is acceptable with the current level of experiments, as the paper can form a basis for further experiments, resulting in a method description paper (though may perhaps have been more suitable for the *Geoscientific Model Development* journal). However, it would be a much stronger paper if a more extensive range of experiments were carried out – i.e. what has to happen to get major reorganisations in the water system; is this realistic? How much water can be rerouted into other catchments under what circumstances? The option is either to leave the results as they are but introduce a discussion as to the potential of the model and further experiments that could be carried out, or to devise a more extensive range of experiments. I have detailed more specific changes below which should help clarify exactly how the model experiment works.*

We have included a paragraph in the discussion outlining the potential for new experiments. The final paragraph of the discussion (starting at line 19, p. 737) now reads:

“The latest bed topography data show that some ice streams in Greenland are constrained by deep troughs (e.g. Jakobshavn Isbræ, Gogineni et al., 2014), while other Greenlandic ice streams are not strongly controlled by bed topography (Bamber et al., 2013a). We therefore hypothesise that other drainage basins in Greenland also might experience subglacial rerouting of water and corresponding fluctuations in ice-flow velocities. The model presented here is a tool that could be applied to other parts of GrIS and thus the sensitivity of the subglacial drainage pattern in different drainage basins could be assessed. Places of interest include the basin containing the Petermann and Humboldt Glaciers, and the glaciers on the northwest coast. Both of these areas could have potential for subglacial water rerouting. For example,

studies have found that in Northern Greenland changes in the subglacial waterways are likely to have taken place during the last glacial maximum (cf. Bamber et al., 2013b). The method outlined in this paper could be used to investigate the change in subglacial drainage patterns as the ice sheet retreated and thinned after the last glacial maximum to its present day state. Alternatively, the model could be applied to the whole of the ice sheet; During glacial times, GrIS most likely extended out onto the continental shelf and formed an icebridge with the Laurentide Ice Sheet (e.g., Dyke 2004). The break up of this bridge most likely impacted the surface topography of the ice sheet and therefore also the subglacial water routeways. Finally, the applicability of the model might be improved with the addition of a shallow-shelf mode (e.g. MacAyeal et al., 1996) in order to better capture the ice stream dynamics. ”

Specific comments

p726 section 2.2 title and elsewhere: Be consistent in the use of routes/routeways/ways for describing flow paths.

The term “routeways” is now used consistently throughout the manuscript.

p727 line 10: A note to highlight that these sorts of routing methods are sensitive to the algorithm used, grid orientation and size would be useful here – see for example Le Brocq et al. 2006, Computers & Geosciences.

The following has been added to the end of the paragraph:

“This scheme has been shown to be the most suitable for calculating fluxes across profiles, since it is consistent for different orientations and resolutions, which is not always a given for routing schemes (Le Brocq et al., 2006).”

p727, end of section 2.2: Information about the time step of the model would be useful here, you present outflux over time, it would be good for a clearer description of how this is come by would be useful.

The paragraph below has been added (following the sentence added above to the previous comment):

“We use the routing scheme to calculate the distribution of subglacial water (for a given basal melt configuration, see below) every 100 model years. This allows us to calculate the outflux of subglacial water at the margins of the model domain over time and thereby investigate the changes in outflux.”

p727 section 2.3: This section is not clear to me to describe the model runs. Do you initialise from present day? Why do you use a low sliding coefficient to start with? Why not start with the inverted parameter and then do a set of sensitivity experiments to see what happens to the water routes under potential future scenarios of sliding change? A full outline of the model runs is needed here to prepare the reader for the results they are going to see.

We use a spin-up run for several reasons. Firstly, if we initialise the model from present day topography using the inverted sliding parameter, the model will need a relaxation time in order for the numerical scheme to reflect the surface topography. If our inversion scheme perfectly captured the basal slip no relaxation time would be necessary. However, our inversion was performed on a different resolution grid and subsequently regridded. Furthermore, the value of the sliding parameter is influenced by how well the processes are approximated in the inversion scheme. Thus, our sliding value is unlikely to perfectly

represent the basal slip and a relaxation time would therefore be needed. During this relaxation phase, any change in surface topography could be due to the relaxation and not the response of the ice surface to changes in basal conditions. Secondly, we wish to avoid giving the impression that we are trying to forecast the behaviour of the system. As stated elsewhere in the manuscript our simple model cannot capture the present dynamic state of the drainage basin. By presenting future scenarios our results would take on a character of forecasting, which is not in line with this work. We hope that by rewriting the section highlighted by the reviewer, it is clearer exactly what the model does:

“The model run consists of three parts: 20kyr of initialisation, 20kyr with increasing basal sliding and a final 10kyr of no forcing. The initialisation is performed in order to obtain an ice sheet configuration consistent with our numerical scheme. Since we wish to obtain realistic changes in ice surface elevation for changing basal sliding values, we want to start with an initial state dominated primarily by deformation. Once this initial state is obtained, we force the model with stepwise increasing basal sliding values over 20kyr using the results from the basal sliding inversion scheme. Finally, we let the model run for another 10kyr without any change in forcing.

The results from the inversion are used to force the model in the second stage of our run not to initialise the model. In this section we elaborate why we adopted this approach: The sliding coefficient values obtained from the inverse scheme are based on the present-day observed topography. Thus, if the inversion scheme perfectly represents the basal sliding coefficient, we could use the results to initialise the model and obtain a surface topography similar to present-day. This surface topography would be in agreement with our numerical scheme without the need for a relaxation time. However, our inversion was performed on a different resolution grid and subsequently regridded. Furthermore, both the ice-flow model and the inversion scheme are approximate solutions to the full stress equations. It is therefore unlikely that the inversion scheme perfectly captures the basal sliding in the entire basin, and the ice-flow model will consequently need a relaxation time in order for the numerical scheme to reflect the surface topography. During this relaxation phase, any change in surface topography could be due to the relaxation and not the response of the ice surface to changes in basal conditions. Thus, it would not be possible to attribute the changes in ice sheet elevation directly to the imposed change in basal condition. This would directly impede our aim of obtaining realistic changes in ice surface elevation for changing basal sliding values.

Accordingly, our model run is as follows: Using the present day surface topography, we do a spin-up run over 20kyr with a where the low-sliding coefficient (cf. Fig. 2) is set to $10^{-11} \text{ Pa}^{-3} \text{ m}^2 \text{ yr}^{-1}$ or less. During the spin-up the ice flow model is run on two grids; a 10km grid for the entire GrIS and a 5km grid for the model domain encompassing the North East Greenland basin (shown in colours in Fig. 1). At every model year the grid cells along the drainage basin boundary are updated with the result from the 10km model downscaled to the 5km grid by linear interpolation. The drainage basin boundaries are assumed to not shift position over time. Thereby in this way, we obtain a simulated steady-state ice-sheet whose shape is in agreement with the numerical scheme of our model, and not substantially influenced by basal sliding. We then perform our simulation of changing basal conditions starting from the steady-state ice-sheet configuration obtained from the spin-up. We decouple the nested regional 5km model from the 10km resolution ice-sheet model and the surface elevation is now kept constant along the basin boundary. The maximum allowed sliding coefficient value k_s is now increased in small steps every 1000 model years for 20kyr. For the first 1000 model years after the spin-up all basal sliding coefficient values that exceed $1.25 \cdot 10^{-11} \text{ Pa}^{-3} \text{ m}^2 \text{ yr}^{-1}$ are set to $1.25 \cdot 10^{-11} \text{ Pa}^{-3} \text{ m}^2 \text{ yr}^{-1}$ and, after another 1000 years, all values that exceed $1.5 \cdot 10^{-11} \text{ Pa}^{-3} \text{ m}^2 \text{ yr}^{-1}$ are set to $1.5 \cdot 10^{-11} \text{ Pa}^{-3} \text{ m}^2 \text{ yr}^{-1}$ and so forth. When the basal sliding is increased in the subsequent model run,

~~we can then assume that~~ The corresponding changes in surface elevation directly reflect the response of the model domain to the changes in basal conditions. Finally, after 20kyr the sliding coefficient is kept constant and the model is run for another 10kyr. This last stage of the model simulation is what we refer to, when we use the term “no external forcing”, because no further changes are imposed on the basal conditions, although margin loss and mass balance field are still applied.”

p728, line 3: Change to ‘Using the simple inversion technique described in Appendix A, ...’

This has been changed as suggested.

p728, line 13: How does Budd et al (1979) come by his value – is it transferable to Greenland? Is it from fieldwork or lab work?

The sentence has been changed to:

“Our values are within the range of values typically found models of subglacial settings, and also comparable to laboratory experiments, that suggest a value of $k_s = 1.8 \cdot 10^{-11} \text{ Pa}^{-3} \text{ m}^2 \text{ yr}^{-1}$ (Budd et al., 1979). This experimental value has been found to agree well with observations from real glaciers (Bindschadler, 1983), although the value is likely very variable for different glacier settings. Even so, our results indicate a high degree of basal sliding.”

p731, line 15: Again, this needs a bit more explanation how you come about the outflux over time.

We hope that by modifying the paragraph on p. 727 (as suggested by the reviewer, see above), it is now clearer how the outflux is calculated. In addition the following sentence is added:

“Figure 6 shows the change in outflux over time for the three major glacier outlets of NEGIS, calculated using a routing scheme (as described above). Please note that in the following discussion of variations in the flux over time the constant basal melt rates of 5mm/yr was used. We set up three flux gates at the glacier outlets close to the margin such that all subglacial water that passes through the flux gates continue towards the margin, and exits at the outlet. The figure shows the total volume of water that passes through a given flux gate. We have further assumed that changes in water transport are instantaneous compared to the time-scale of ice-flow”

p732, lines 3-5: The mechanism of feedback which causes changes in the ice surface needs explaining here.

We are unsure of what the reviewer is asking here. The changes in surface elevation are not a feedback process. The small changes indicate that the model is approaching steady state. For clarity we have added the following sentence to line 5:

“...after a few thousand years the ice-flow model shows surface elevation changes of the order of 10^{-1} m/yr or less. We interpret this as a sign that the model is approaching steady state. However, even after several...”

Figures

Figure 2 – this dataset looks like it has been smoothed/interpolated by the plotting software? It would be better to present the raw data which would help to demonstrate the resolution of the model. The labels on the scale bar also need to be tidied to have superscript for the power of 10.

The smoothing is not due the plotting software, but stems from the solution to the inverse method. The sliding coefficient is inverted on a 1km resolution dataset. In order to impose a degree of smoothness the solution is regridded to a 5 km resolution (corresponding to the resolution of the ice-flow model), and in order to further avoid large spatial variations in the sliding coefficient, the result from the inversion has been smoothed by a running mean using 2 neighbouring points (in all directions).

This has now been clarified in line 11 on p726:

“The inversions are performed on the 1 km resolution topography data and subsequently regridded.”

And in line 13 on p. 728:

“The results from inverting for the sliding coefficient k_s are shown in Fig. 2. Note that the solution has been regridded to 5km from the original 1 km solution (see also above) and smoothed with a running mean to impose a degree of smoothness.”

Reviewer 2

This manuscript present results from a numerical modelling study, which looks at how ice thickness changes in North East Greenland affects the re-distribution of subglacial hydrological routing, and the potential impact on ice dynamics. It makes a very interesting point, that variations observed closer to the margins may be part of an ongoing response to geometrical changes initiated farther inland, and over long timescale. This should be considered in interpreting current observational records and the causes to detected changes.

The introduction and rationale are overall well presented and clearly written. However, the authors use major simplifications in their approach, and although they are explicit about them in the text, I do wonder if additional information is nonetheless needed to support further the model results. I am hoping that this could merely be addressed by making better use of the figures to display additional model output. In particular, I refer to:

- 1) The use of the shallow ice approximation in ice-flow model: there is not enough information to substantiate the results from the inversion. How close to observations are the thickness / velocity fields, at the end of the spin-up period? For example, Figure 1 could be used more effectively, e.g. by showing the errors between modelled and observed geometry. Similarly, contours for the modelled velocity could be added to the plot. Currently, the main justification provided (e.g., that the basal stress is equal to driving stress in most of the domain) is drawn from a study by Joughin et al., but does not apply to two particular regions (the onset of fast flow, and the fast ice plain, as stated in the manuscript), which happen to be key when measuring the outflux of ice and geometrical changes.*

We assume that the reviewer is referring to Figure 4, which is also mentioned in the comments below. This figure has now been extended to show the difference in surface elevation between present day elevation

and the surface at the end of the spin-up run and at the end of the model run, respectively. The balance velocities have also been included. We hope this addresses the comment above.

- 2) *It seems like the authors are using a constant basal melt rate set to 5 mm/yr. Since they have calculated the melt rate for various regions of the domain, why not routing this water instead (could they calculate a distributed melt map?)? In my opinion, a sensitivity study on this number would nicely complement the work (5 mm/yr is a lower end value, as stated in the manuscript – why not choose an average value?).*

It is correct that we could have chosen an average value instead of the lower value of 5mm/yr, but the main point is the resulting variations in subglacial outflux, not the exact value of the outflux. These variations would be identical for other values (if the melt rate is constant in the drainage basin), although with different values. We prefer not to use the upper value estimate since it is most definitely too high in some areas, for example, the area upstream of the divergence between Zacharia and Nioghalvfjerd. Here the surface slopes are small which leads to an overestimation of the sliding velocities. Instead, we have included a map of this upper limit basal melt. To this end, Figure 5 has been extended to include a figure of the subglacial water flux using the calculations described on p. 730. Furthermore, the following sentence has been inserted after line 2 on p. 731:

“Figure 5a shows the flux of subglacial water using this upper limit estimate. Note how the subglacial water is routed along the shear margins. This is in agreement with field observations (Christianson et al., 2014).”

And the following sentence line 16, p. 731:

“Figure 6 shows the change in outflux over time for the three major glacier outlets of NEGIS, calculated using a routing scheme (as described above). Please note that in the following discussion of variations in the flux over time the constant basal melt rates of 5mm/yr was used.”

Please note that Fig. 6 has been updated. The units on the y-axes were found to be incorrect, so the calculations have been redone using a slightly different flux gate scheme. This change does not affect the conclusions of the manuscript in any way, the variations in subglacial water persist.

Other comments

There are mentions of a whole GrIS grid, at 10 km resolution, but no figures/ results relate to this. Is that grid mostly used for setting initial conditions?

Yes, in order to clarify this line 14 p. 723 has been modified:

“Data input in the model are surface and bed elevation from Bamber et al. (2013a) regrided to 5km (north-eastern drainage basin) and 10km (GrIS, used in the spin-up run), and present day...”

Page 729, lines 14-17: Is this based on Figure 4?

Partly, but a reference to Figure 4 has been added for clarity:

“The build up of ice volume in the central part of the NEGIS naturally corresponds to an increase in surface elevation (cf. Fig. 4).”

Page 733, Lines 6-8: It is unclear what the author are implying, in stating that cells which are sensitive to the bedrock are also associated with large errors? I suggest to make the point clearer, or to remove the statement.

The sentence has been modified for clarity:

“In contrast, a large number of the grid cells that are sensitive to the bedrock slope coincide with areas where the bed topography is associated with large errors, implying that the calculated subglacial water routeways in this region are particularly uncertain.”

Page 734, paragraph starting line 4: Starting the paragraph with “our results indicate...” seems a bit of an overstatement, since there is no feedbacks allowed in the model between ice dynamics and subglacial system (yes?). Else, showing some plots of how ice velocity evolves together with water routing would strengthen the argumentation.

The paragraph has been reworded and now reads:

“In our model run, an increase in basal sliding generally leads to a lowering of the ice surface. We hypothesise that the formation of the ice stream could have happened as a positive feedback effect, where the introduction of subglacial water at the bed (i.e. increase in basal sliding) led to a lowering of surface elevation, leading to more subglacial water being rerouted into the system. This in turn might lead to a further lowering of the surface and thereby more subglacial water. However, since our model does not include feedbacks between the subglacial system and ice-flow, we cannot truly determine the formation mechanism. It is worth noting that we do not observe “water piracy” in the sense described by Anandakrishnan and Alley (1997) where neighbouring ice streams slow down or speed up when they exchange subglacial water. We also investigated...”

Page 735, lines 26-29: Sentence is unclear. Do you mean that the "routing" from grid cells north of the onset of NEGIS is correct – while routing along the margin of NEGIS are "less" constrained??

This has now been changed for clarity:

“This makes us confident that our assessment of the sensitivity of the grid cells north of the onset of NEGIS is correct, i.e. that even for present day topography with steeper gradients in the hydropotential, they can still be sensitive to changes in surface slope. The subglacial water routeways originating at the grid cells along the margin of NEGIS are probably less sensitive to changes in surface slope.”

Figures

Figure 3: Should the RHS axis be labeled as a "change" in sliding coefficient (but if so, why is the original value set to $1 \text{ Pa}^{-3} \text{ m}^2 \text{ yr}^{-1}$)? - If not, then I am not sure how to relate the value of sliding coefficient shown on that plot, to the mapped values shown on Figure 2?

Figure 3 shows how the maximum allowed value of the sliding coefficient is slowly increased, and how the ice volume changes in response to this increase. The figure caption is a bit misleading, it has now been changed to:

“Change in ice volume (blue) of the NE Greenland model domain as the sliding coefficient (black) is varied during the model run.”

In addition, line 22-23 on page 727 has been expanded to make it clearer:

“The maximum allowed sliding coefficient value k_s is then increased in small steps every 1000 model years. Thus, for the spin-up run the sliding coefficient values (Fig. 2) that exceed $1 \cdot 10^{-11} \text{ Pa}^{-3} \text{ m}^2 \text{ yr}^{-1}$ are set to $1 \cdot 10^{-11} \text{ Pa}^{-3} \text{ m}^2 \text{ yr}^{-1}$. Then, after the spin-up run, the sliding is slowly increased, such that instead all values that exceed $1.25 \cdot 10^{-11} \text{ Pa}^{-3} \text{ m}^2 \text{ yr}^{-1}$ are set to $1.25 \cdot 10^{-11} \text{ Pa}^{-3} \text{ m}^2 \text{ yr}^{-1}$ and, after another 1000 years, all values that exceed $1.5 \cdot 10^{-11} \text{ Pa}^{-3} \text{ m}^2 \text{ yr}^{-1}$ are set to $1.5 \cdot 10^{-11} \text{ Pa}^{-3} \text{ m}^2 \text{ yr}^{-1}$ and so forth.”

Figure 4: Wouldn't it be a more consistent/useful approach, to have two panels, one showing the difference in surface elevation from the end of the spin-up period and observed elevation (which gives an idea of model performance). The second one showing the difference between the ice sheet surface at the end of the model run and at the end of the spin-up period. In addition, why not showing the modelled velocity, rather than the observed?

The figure has now been changed and shows two panels; one showing the difference between the spin-up surface and the surface at the end of the model run, and one showing the difference between the present day surface and the surface at the end of the model run (i.e. the original figure 4). In addition, the balance velocities have been added, however, we would like to emphasise that even present day balance velocities are below observed velocities. We have kept the observed, present velocities to aid the reader in identifying the current position of the ice stream.

Figure 5: Why is Storstrommen not clearly identified? Consider adding values to the melt rate contours?

This figure is mainly meant to illustrate the distribution of subglacial water between Zachariae and Nioghalvfjærds glaciers. For clarity the drainage system of Storstrømmen has not been added, but the water routeways indicate their drainage pattern. We leave it to the discretion of the editor if Storstrømmen should be added to the figure.