

Supplement of The Cryosphere Discuss., 9, 6829–6870, 2015
<http://www.the-cryosphere-discuss.net/9/6829/2015/>
doi:10.5194/tcd-9-6829-2015-supplement
© Author(s) 2015. CC Attribution 3.0 License.



Supplement of

On the assimilation of optical reflectances and snow depth observations into a detailed snowpack model

L. Charrois et al.

Correspondence to: L. Charrois (luc.charrois@gmail.com)

The copyright of individual parts of the supplement might differ from the CC-BY 3.0 licence.

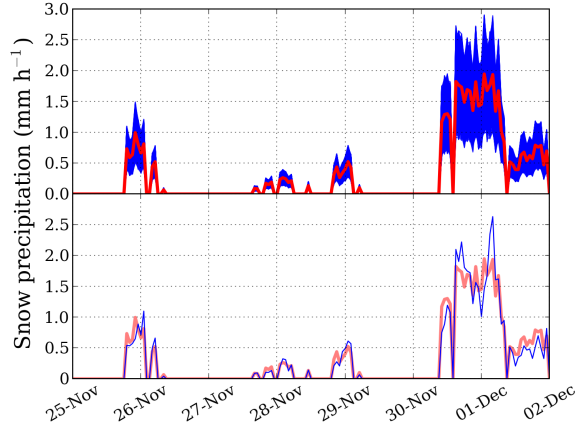


Figure S1: Snow precipitation rate at the CdP site over one week (25/11/2010 to 02/12/2010), from the unperturbed meteorological reanalysis (in red, both top and bottom), a single realization of the perturbed reanalysis (in blue, bottom), and the full ensemble of 300 perturbed analysis (in blue, top).

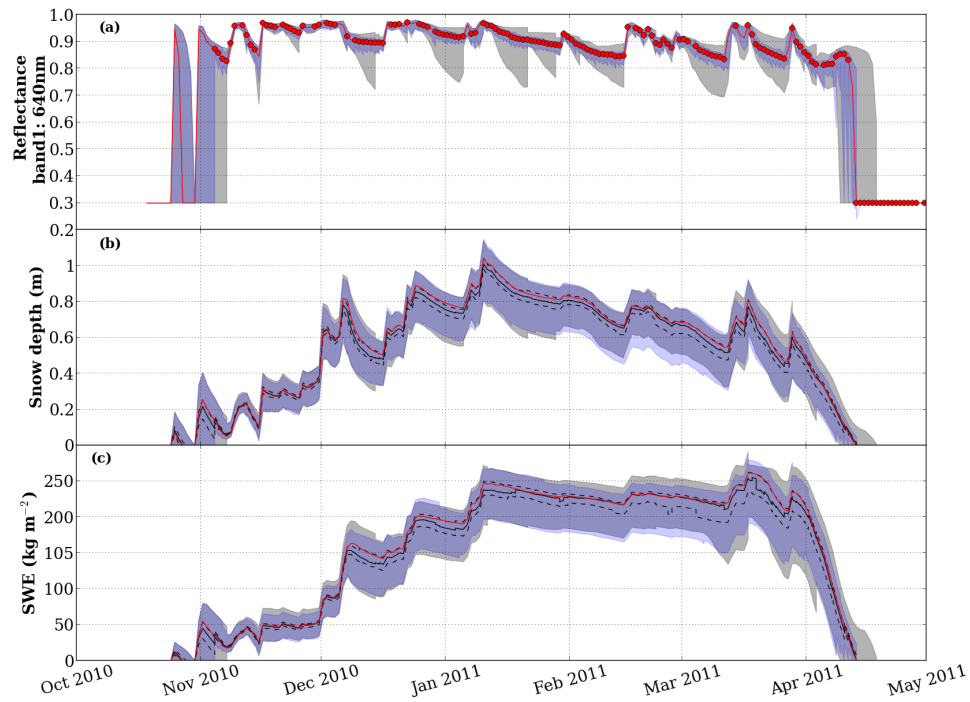


Figure S2: Same as Fig. 4, but without the 1240-nm reflectance (panel (b) of Fig. 4), and where the grey envelopes are from the baseline assimilation experiment and the blue envelopes represent the ensemble assimilating MODIS-like reflectances every day. The blue color is darker where both envelopes are superposed.



Figure S3: Same as Fig. S2 where the blue envelopes are from the experiment assimilating MODIS-like reflectances from October to December 2010 only.

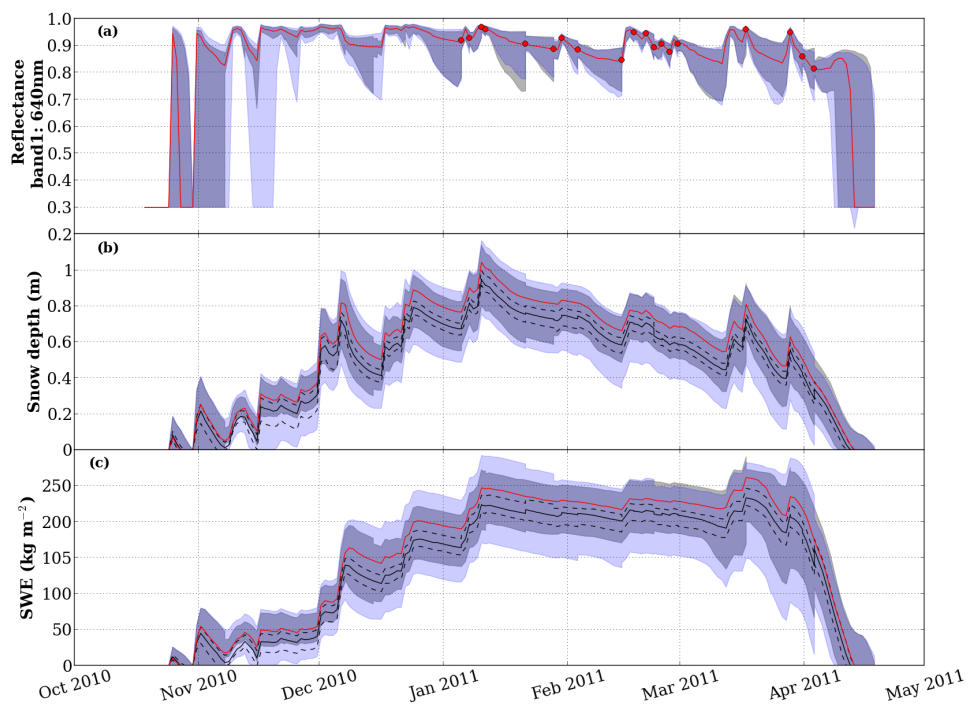


Figure S4: Same as Fig. S2 where the blue envelopes are from the experiment assimilating MODIS-like reflectances from January to April 2011 only.

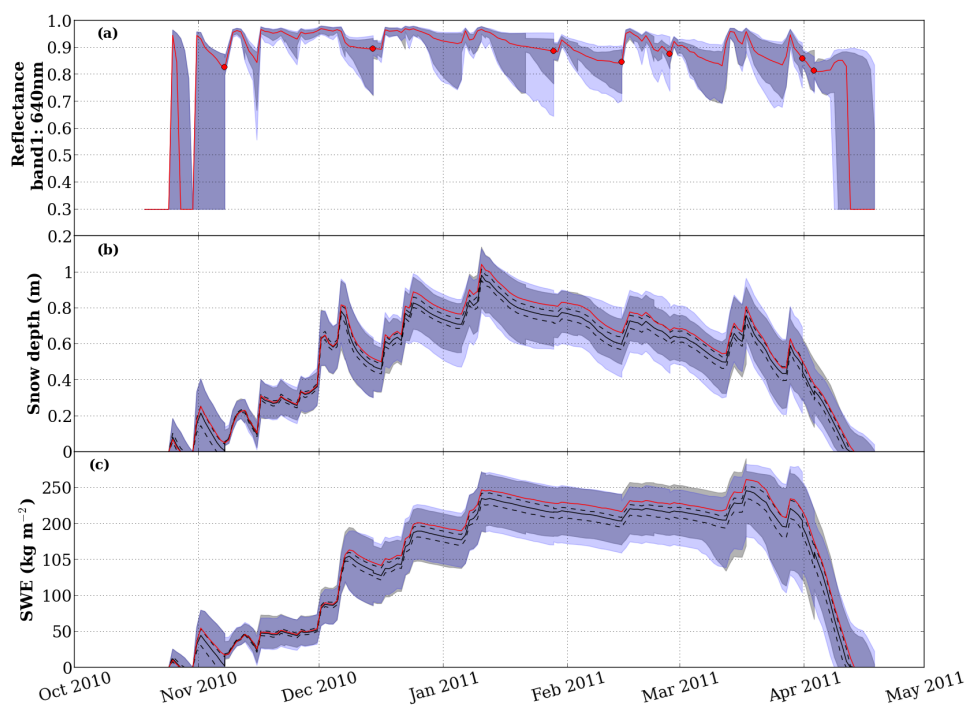


Figure S5: Same as Fig. S2 where the blue envelopes are from the experiment assimilating MODIS-like reflectances at 7 selected dates right after several day-long periods without precipitations and right before snowfalls.

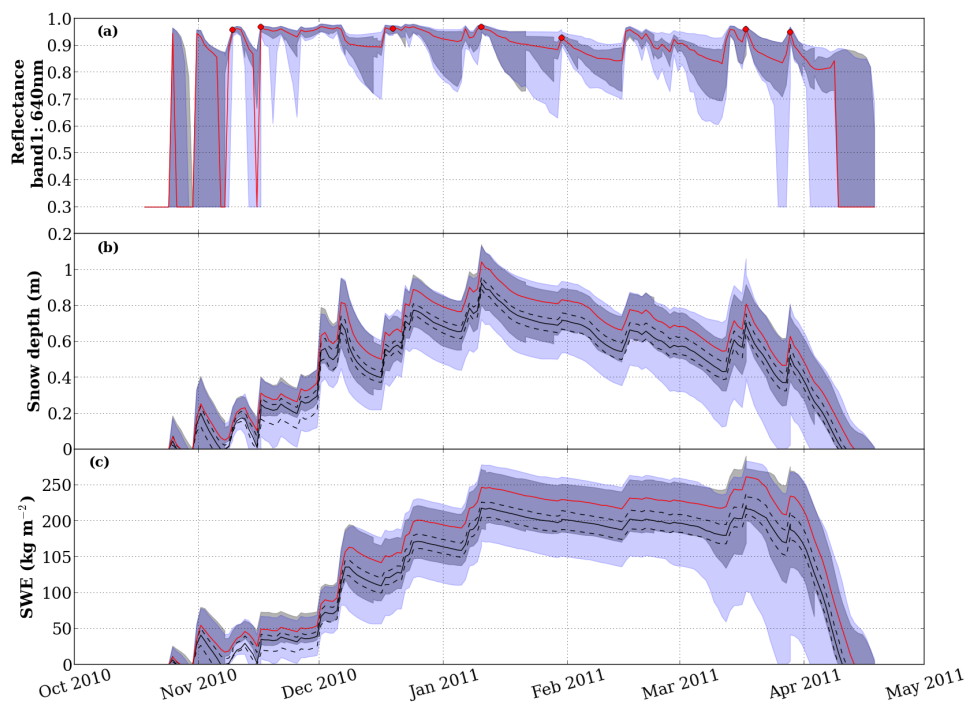


Figure S6: Same as Fig. S2 where the blue envelopes are from the experiment assimilating MODIS-like reflectances at 7 selected dates right after snowfall events.

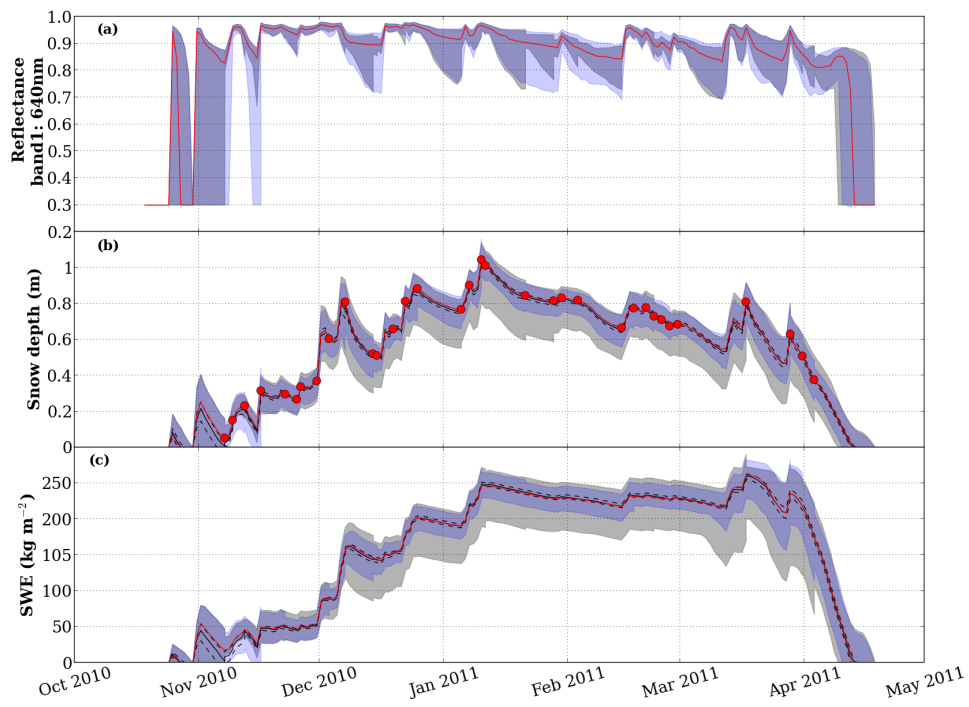


Figure S7: Same as Fig. S2 where the blue envelopes are from the experiment assimilating synthetic SD observations with the same time frequency as MODIS-like reflectances in the baseline experiment. On graph (b), the red dots show the assimilated SD observations.