

Author response to interactive comments on: “Characterizing Arctic sea ice topography using high-resolution IceBridge data” by A. A. Petty et al.

Reviewer comments in black, our responses are in blue.

A difference document is included at the end of these comments, highlighting the changes made to the original manuscript.

Note that we would also like to request a change to Figure 13 (and surrounding discussion) in the revised manuscript. This is outside of the reviewer comments. As the 2015 ATM data is now available and processed, we would like to include this in the ice thickness estimates (Figure 13) from surface feature heights (presented in Section 4.3) instead of 2013/2014. The 2015 data is not included in the calculation of the regression coefficient (Figure 12) that is then used to estimate ice thickness from the 2015 surface feature heights. Including 2015 also provides a quick-look at the 2015 surface feature data that is likely to be of interest to the community. To the data section, we have added: ‘We primarily analyze the ATM data from 2009--2014 in this study, but also make use of the recently released 2015 data in the surface feature--ice thickness regression analysis (Section 4.3). We have made a few small changes to the discussion in Section 4.3, as noted in the difference document.

Anonymous Referee #1 Received and published: 7 January 2016

General comment

This paper presents an analysis of sea ice topography data collected as part of the IceBridge mission between 2009 and 2014. The approach adopted combines conically scanning laser altimeter data, optical imageries and snow radar data to obtain a 3D product of sea ice topography. The authors present statistics of the height of sea-ice topographic features in the line with many previous studies and, as a novelty of this paper, a geometrical characterization and statistics of the volume of surface features. The main findings of this study are the strong spatial and interannual variability of sea ice topography, also linked to ice age (MYI/FYI), the dependence of ice topography on the proximity to the coast and the strong correlation between surface feature height and ice thickness. The paper reads well throughout. The data analysis is complex, complete and well presented. The novelty of this work, i.e. the 3D study of sea ice surface features, brings a new insight in the sea-ice surface topography. An outlook presents future development and interesting application of this work. Nevertheless, in very few points I would like to see a more detailed discussion of the results (see specific comments).

We thank the Reviewer for their comments and efforts that will greatly improve the manuscript. We agree that more detailed discussion is needed and have discussed this in response to the specific comments below.

Specific comments SEA ICE TOPOGRAPHY CHARACTERIZATION: at page 6503 lines 3-5, the authors refer to future work when mentioning differences between the present study and former linear profiling studies. I do agree that the material presented here is already enough, but I still think that few words about expected differences will make the present study immediately comparable with former studies.

This comment is dealt with somewhat in our response to the comment below, where the discussion at the start of 6503 provides more detail surrounding the benefits of this 3D study. We have added some more information here to make this clearer, as detailed below.

We have also added the following sentence to make it clear that our distributions are expected to be different, but presented in a way that enable comparison with earlier work:

'The feature height distributions in this study are thus likely to differ from those presented previously [e.g. Wadhams, 1980], however, the distributions will be presented in a similar manner to enable comparison with these earlier analyses.'

In this 3D analysis the height of a topographic feature is actually the maximum (peak) height of it (as explained at pg. 6506, lines 22-25), whereas a 2D profiling along the same transect would more likely detect a maximum that is not the peak of the surface feature. This would lead to a systematic underestimation, when dealing with linear profiling studies, that should be taken into account when comparing results. This is mentioned at page 6510, lines 16-19, but it should be mentioned already before. This would also put more stress on the improvements of a 3D analysis compared to previous studies.

We agree this is an important component of this work that needs stressing. We do also discuss this idea back on pg. 6502 of the original manuscript:

'It is worth noting that these features will likely differ from those detected using linear profiling. For one, the Rayleigh Criterion (separating peaks by measuring the depth of the crest between them) is not employed in this study, due to the three-dimensional nature of the data. The relatively wide (~200-300 m) swath width also means we are much more likely picking the peaks of the entire surface feature, as opposed to linear profiling studies, which detect the peak of the surface feature along a random (linear) profile. These differences in approach, and the impact on the resultant sail heights especially, are discussed in more detail by Lensu [2003].'

We have added another line to this discussion to add a further benefit of this 3D study over previous 2D (linear transect) studies:

'In regions where surface features are sparse, the two-dimensional ATM scan makes it much more likely that we will detect a surface feature (higher than the chosen elevation threshold).'

We have also changed the start of L16-19 to reference this discussion: 'As discussed earlier (Section 3)'...

RESULTS: I find the discussion of Figure 5 (pages 6508-6509) a bit lacking. For example, in the years 2012, 2013 and 2014 (when there is enough spatial coverage in the BC region) on one hand we see a similar pattern in the CA, on the other hand in the BC the differences between the three years are very strong, and not simply due to the presence of MYI/FYI ice. Did you investigate possible causes? As it is mentioned at page 6515, lines 10-12, the winds in this region are mainly oriented parallel to the coast and can push the ice away from this region towards the Bering Strait. Thus it could be that differences in atmospheric forcing caused such differences in ice topography. Please elaborate this point. In both the height and the volume of features there is a decrease from 2009 to 2013 and then an increase in 2014, did you investigate possible causes?

To make the discussion of both the feature height and volume variability clearer we have moved the discussion to a new section (**4.1.3 Potential causes of feature height and volume variability**) and have embedded the feature height/volume results in two sections before this (in **4.1 Sea ice topography characterization**).

We have added the following sentence to the new Section 4.1.1: 'Note that a discussion of potential causes of this interannual variability is provided later, in Section 4.1.3.'

We have elaborated on the discussion that was previously contained at the end of the volume results discussion to include more information regarding the 2009-2014 interannual variability. We have mainly focused on providing a more complete discussion surrounding existing studies that attempted more to understand the causes, rather than impacts of ice dynamics. We refer the reviewer to this new section.

The BC mean surface high variability between 2011-2014 is still relatively small compared to the large spread (standard deviation) in feature heights. We did analyze the ice drift vectors from NSIDC, but didn't observe any obvious link between the drift through the preceding months and feature height variability so decided not to elaborate further, as this would likely add unnecessary confusion. We have modified the discussion surrounding the complex interplay between Beaufort Gyre ice drift and melting out of ice in the BC region, which impacts the presence of MYI in the region, and added information about the recovery of old ice throughout the Arctic in 2014. We refer the reviewer to this new discussion section (4.1.3).

In both abstract and conclusions I read "crucial information regarding the tail of the ice thickness distribution" but I somehow miss the point. Do you refer to figure 7 or to paragraph 4.4? In the first case, only few rows in the paper are reserved to the discussion of Figure 7 (p. 6510 lines 12-21 and pg. 6511 lines 6-8). I think the authors need to justify more this statement.

When we mention the tail of ice thickness distribution, we are referring to the surface features detected in this study, which contribute to the thicker end of the *overall* ice thickness distribution. We are not referring to the tail of the surface feature distribution (e.g. Figure 7).

I find the discussion of Figure 9 (pg. 6512, lines 9-13) a bit lacking. For example, the shape of the distribution is very different between the CA and the BC, any possible explanation?

We have attempted to provide more information about the causes of differences in distributions, as discussed in the reply to the comment above.

Page/Line comments

- 6496/26: "... various spatial scale ..." please add range of variability of ice floes.

We have changed:

'Sea ice is a heterogeneous medium consisting of level and/or deformed ice floes of various spatial scales, separated by cracks and leads (regions of open water).'

To:

'Sea ice is a heterogeneous medium consisting of level and/or deformed ice floes of various spatial scales (hundreds of meters to several kilometers in diameter), separated by cracks and leads.'

- 6497/6: Ridges do extend vertically but also horizontally for tens/hundreds of meters. This should be mentioned already here, since in a 3D study such characteristic is important. To my mind, this is one of the reasons why the Rayleigh criterion cannot be used in a 3D study, as mentioned at pg. 6502 lines 25-28.

Agreed. We have added:

P3/L5-6: 'Distinct pressure ridges can often extend laterally for tens/hundreds of meters across an ice floe.'

- 6497/15: "In the winter Arctic ice pack ..." this is not truly correct because sail and keel density is high not only in winter but also in regions characterize by high convergence. Please rephrase to "In Arctic regions where sail and keel density is high ..." or similar.

Agreed. Replaced: 'In the winter Arctic ice pack where...' with 'In regions where...'

- 6499/19 Add the exact time in the year when the data were collected, either here or in Table 1.

Added this to Table 1 based on comment below.

- 6503/4-6: See specific comment above.

See above.

- 6507/21: I guess you mean "...mean height OF all the points..." .

Yes, thanks. We have changed this.

- 6509/7: See comment above regarding Figure 5.

Figures 5/6 uses the peak height of the features, not the mean of all points within each feature. This is explained in the previous methods section, which we think is enough of a clarification.

- 6512/6-8: I find this sentence a bit confusing, please rephrase.

Replaced:

'The regional variability in V_f appears stronger than the feature height variability, implying variability in the areal coverage of the features consistent with the feature height variability.'

With:

'The regional variability in V_f appears stronger than the feature height (h_f) variability. Repeating the analysis for both the mean areal coverage and mean height of features (not shown) demonstrates a roughly equal contribution to the regional volume variability from each term (features increasing in area and height concurrently).'

- 6512/24-26: to my mind, this sentence points to the importance of such 3D study. Stress this point more.

Agreed. We have added:

This highlights how the three-dimensional surface feature volume analysis presented is a more useful indicator of the total ice topography variability, compared to linear transects of peak feature heights, as discussed in Section 3.1.4.

- 6515/21-24: same as previous comment.

Agreed, we have added the following:

'This suggests that the three-dimensional surface feature volume data is a more useful measure of coastal topographic variability compared to the surface feature heights, especially compared to data compiled from linear transects.'

- 6520/1: "crucial information", see specific comment above.

We have replied to this in the comment above.

- 6522/30: the link is wrong: <https://aaltodoc.aalto.fi/handle/123456789/2097>.

We have added this website to the reference. The old url was added by the Copernicus editorial staff.

- Table 1: Add the exact period of the year when the data were collected (see also comment above).

OK, we have added start and end dates of the sea ice campaigns to the table.

- Table 3: Should "2015" be "All" ?

Yes, thanks. We have changed this.

- Figure 2, 5, 8, 13, 14: add lat, lon to the maps.

We have added lat/lon labels to these figures as requested.

- Figure S6 (Supplement): the caption is inconsistent with the figures and with what is written in the paper at pg. 6511/9-10: it is not a comparison between the two regions but between MYI and FYI.

Yes, this was wrong. Thanks for pointing this out. We have changed the caption to read:

'...for all features classified as either (a) first-year ice or (b) multi-year ice (ice type mask shown in Figure~S4).'

Some references are missing the second name of authors, in particular:

Abdalati et al., 2010
Hibler III et al., 1972
Hibler III et al., 1974
Krabill et al., 2002
Maneewongvatana, S. and Mount, D. M., 1999
Mock et al., 1972
Onana et al., 2013
Timco, G. and Weeks, W. F., 2010
Tucker III, W. B. and Govoni, J.W., 1981
Tucker III et al., 1979
Tucker III et al., 1984

We have gone through and made additions/corrections to the references. Some of the references listed above seemed to be already complete, however.

General comment

This paper presents an analysis of sea ice topography data collected as part of the IceBridge mission between 2009 and 2014. The approach adopted combines conically scanning laser altimeter data, optical imageries and snow radar data to obtain a 3D product of sea ice topography. The authors present statistics of the height of sea-ice topographic features in the line with many previous studies and, as a novelty of this paper, a geometrical characterization and statistics of the volume of surface features. The main findings of this study are the strong spatial and interannual variability of sea ice topography, also linked to ice age (MYI/FYI), the dependence of ice topography on the proximity to the coast and the strong correlation between surface feature height and ice thickness. The paper reads well throughout. The data analysis is complex, complete and well presented. The novelty of this work, i.e. the 3D study of sea ice surface features, brings a new insight in the sea-ice surface topography. An outlook presents future development and interesting application of this work. Nevertheless, in very few points I would like to see a more detailed discussion of the results (see specific comments).

We thank the Reviewer for their comments and efforts that will greatly improve the manuscript. We agree that more detailed discussion is needed and have discussed this in response to the specific comments below.

Specific comments SEA ICE TOPOGRAPHY CHARACTERIZATION: at page 6503 lines 3-5, the authors refer to future work when mentioning differences between the present study and former linear profiling studies. I do agree that the material presented here is already enough, but I still think that few words about expected differences will make the present study immediately comparable with former studies.

This comment is dealt with somewhat in our response to the comment below, where the discussion at the start of 6503 provides more detail surrounding the benefits of this 3D study. We have added some more information here to make this clearer, as detailed below.

We have also added the following sentence to make it clear that our distributions are expected to be different, but presented in a way that enable comparison with earlier work:

'The feature height distributions in this study are thus likely to differ from those presented previously [e.g. Wadhams, 1980], however, the distributions will be presented in a similar manner to enable comparison with these earlier analyses.'

In this 3D analysis the height of a topographic feature is actually the maximum (peak) height of it (as explained at pg. 6506, lines 22-25), whereas a 2D profiling along the same transect would more likely detect a maximum that is not the peak of the surface feature. This would lead to a systematic underestimation, when dealing with linear profiling studies, that should be taken into account when comparing results. This is mentioned at page 6510, lines 16-19, but it should be mentioned already before. This would also put more stress on the improvements of a 3D analysis compared to previous studies.

We agree this is an important component of this work that needs stressing. We do also discuss this idea back on pg. 6502 of the original manuscript:

'It is worth noting that these features will likely differ from those detected using linear profiling. For one, the Rayleigh Criterion (separating peaks by measuring the depth of the crest between them) is not employed in this study, due to the three-dimensional nature of the data. The relatively wide

(~200-300 m) swath width also means we are much more likely picking the peaks of the entire surface feature, as opposed to linear profiling studies, which detect the peak of the surface feature along a random (linear) profile. These differences in approach, and the impact on the resultant sail heights especially, are discussed in more detail by Lensu [2003].'

We have added another line to this discussion to add a further benefit of this 3D study over previous 2D (linear transect) studies:

'In regions where surface features are sparse, the two-dimensional ATM scan makes it much more likely that we will detect a surface feature (higher than the chosen elevation threshold).'

We have also changed the start of L16-19 to reference this discussion: 'As discussed earlier (Section 3)'...

RESULTS: I find the discussion of Figure 5 (pages 6508-6509) a bit lacking. For example, in the years 2012, 2013 and 2014 (when there is enough spatial coverage in the BC region) on one hand we see a similar pattern in the CA, on the other hand in the BC the differences between the three years are very strong, and not simply due to the presence of MYI/FYI ice. Did you investigate possible causes? As it is mentioned at page 6515, lines 10-12, the winds in this region are mainly oriented parallel to the coast and can push the ice away from this region towards the Bering Strait. Thus it could be that differences in atmospheric forcing caused such differences in ice topography. Please elaborate this point. In both the height and the volume of features there is a decrease from 2009 to 2013 and then an increase in 2014, did you investigate possible causes?

To make the discussion of both the feature height and volume variability clearer we have moved the discussion to a new section (**4.1.3 Potential causes of feature height and volume variability**) and have embedded the feature height/volume results in two sections before this (in **4.1 Sea ice topography characterization**).

We have added the following sentence to the new Section 4.1.1: 'Note that a discussion of potential causes of this interannual variability is provided later, in Section 4.1.3.'

We have elaborated on the discussion that was previously contained at the end of the volume results discussion to include more information regarding the 2009-2014 interannual variability. We have mainly focused on providing a more complete discussion surrounding existing studies that attempted more to understand the causes, rather than impacts of ice dynamics. We refer the reviewer to this new section.

The BC mean surface high variability between 2011-2014 is still relatively small compared to the large spread (standard deviation) in feature heights. We did analyze the ice drift vectors from NSIDC, but didn't observe any obvious link between the drift through the preceding months and feature height variability so decided not to elaborate further, as this would likely add unnecessary confusion. We have modified the discussion surrounding the complex interplay between Beaufort Gyre ice drift and melting out of ice in the BC region, which impacts the presence of MYI in the region, and added information about the recovery of old ice throughout the Arctic in 2014. We refer the reviewer to this new discussion section (4.1.3).

In both abstract and conclusions I read "crucial information regarding the tail of the ice thickness distribution" but I somehow miss the point. Do you refer to figure 7 or to paragraph 4.4? In the first case, only few rows in the paper are reserved to the discussion of Figure 7 (p. 6510 lines 12-21 and pg. 6511 lines 6-8). I think the authors need to justify more this statement.

When we mention the tail of ice thickness distribution, we are referring to the surface features detected in this study, which contribute to the thicker end of the *overall* ice thickness distribution. We are not referring to the tail of the surface feature distribution (e.g. Figure 7).

I find the discussion of Figure 9 (pg. 6512, lines 9-13) a bit lacking. For example, the shape of the distribution is very different between the CA and the BC, any possible explanation?

We have attempted to provide more information about the causes of differences in distributions, as discussed in the reply to the comment above.

Page/Line comments

- 6496/26: "... various spatial scale ..." please add range of variability of ice floes.

We have changed:

'Sea ice is a heterogeneous medium consisting of level and/or deformed ice floes of various spatial scales, separated by cracks and leads (regions of open water).'

To:

'Sea ice is a heterogeneous medium consisting of level and/or deformed ice floes of various spatial scales (hundreds of meters to several kilometers in diameter), separated by cracks and leads.'

- 6497/6: Ridges do extend vertically but also horizontally for tens/hundreds of meters. This should be mentioned already here, since in a 3D study such characteristic is important. To my mind, this is one of the reasons why the Rayleigh criterion cannot be used in a 3D study, as mentioned at pg. 6502 lines 25-28.

Agreed. We have added:

P3/L5-6: 'Distinct pressure ridges can often extend laterally for tens/hundreds of meters across an ice floe.'

- 6497/15: "In the winter Arctic ice pack ..." this is not truly correct because sail and keel density is high not only in winter but also in regions characterize by high convergence. Please rephrase to "In Arctic regions where sail and keel density is high ..." or similar.

Agreed. Replaced: 'In the winter Arctic ice pack where...' with 'In regions where...'

- 6499/19 Add the exact time in the year when the data were collected, either here or in Table 1.

Added this to Table 1 based on comment below.

- 6503/4-6: See specific comment above.

See above.

- 6507/21: I guess you mean "...mean height OF all the points..." .

Yes, thanks. We have changed this.

- 6509/7: See comment above regarding Figure 5.

Figures 5/6 uses the peak height of the features, not the mean of all points within each feature. This is explained in the previous methods section, which we think is enough of a clarification.

- 6512/6-8: I find this sentence a bit confusing, please rephrase.

Replaced:

'The regional variability in V_f appears stronger than the feature height variability, implying variability in the areal coverage of the features consistent with the feature height variability.'

With:

'The regional variability in V_f appears stronger than the feature height (h_f) variability. Repeating the analysis for both the mean areal coverage and mean height of features (not shown) demonstrates a roughly equal contribution to the regional volume variability from each term (features increasing in area and height concurrently).'

- 6512/24-26: to my mind, this sentence points to the importance of such 3D study. Stress this point more.

Agreed. We have added:

This highlights how the three-dimensional surface feature volume analysis presented is a more useful indicator of the total ice topography variability, compared to linear transects of peak feature heights, as discussed in Section 3.1.4.

- 6515/21-24: same as previous comment.

Agreed, we have added the following:

'This suggests that the three-dimensional surface feature volume data is a more useful measure of coastal topographic variability compared to the surface feature heights, especially compared to data compiled from linear transects.'

- 6520/1: "crucial information", see specific comment above.

We have replied to this in the comment above.

- 6522/30: the link is wrong: <https://aaltodoc.aalto.fi/handle/123456789/2097>.

We have added this website to the reference. The old url was added by the Copernicus editorial staff.

- Table 1: Add the exact period of the year when the data were collected (see also comment above).

OK, we have added start and end dates of the sea ice campaigns to the table.

- Table 3: Should "2015" be "All" ?

Yes, thanks. We have changed this.

- Figure 2, 5, 8, 13, 14: add lat, lon to the maps.

We have added lat/lon labels to these figures as requested.

- Figure S6 (Supplement): the caption is inconsistent with the figures and with what is written in the paper at pg. 6511/9-10: it is not a comparison between the two regions but between MYI and FYI.

Yes, this was wrong. Thanks for pointing this out. We have changed the caption to read:

‘...for all features classified as either (a) first-year ice or (b) multi-year ice (ice type mask shown in Figure~S4).’

Some references are missing the second name of authors, in particular:

Abdalati et al., 2010
Hibler III et al., 1972
Hibler III et al., 1974
Krabill et al., 2002
Maneewongvatana, S. and Mount, D. M., 1999
Mock et al., 1972
Onana et al., 2013
Timco, G. and Weeks, W. F., 2010
Tucker III, W. B. and Govoni, J.W., 1981
Tucker III et al., 1979
Tucker III et al., 1984

We have gone through and made additions/corrections to the references. Some of the references listed above seemed to be already complete, however.

Characterizing Arctic sea ice topography using high-resolution IceBridge data

**Alek Petty^{1, 2}, Michel Tsamados³, Nathan Kurtz², Sinead Farrell^{1, 2, 4},
Thomas Newman^{1, 4}, Jeremy Harbeck², Daniel Feltham⁵, and Jackie Richter-Menge⁶**

¹Earth System Science Interdisciplinary Center, University of Maryland, College Park, Maryland, USA

²Cryospheric Sciences Laboratory, NASA Goddard Space Flight Center, Greenbelt, Maryland, USA.

³Centre for Polar Observation and Modelling, Department of Earth Sciences, University College London, London, UK.

⁴NOAA Center for Weather and Climate Prediction, College Park, Maryland, USA.

⁵Centre for Polar Observation and Modelling, Department of Meteorology, University of Reading, Reading, UK.

⁶Cold Regions Research and Engineering Laboratory, Hanover, New Hampshire, USA

Correspondence to: A. A. Petty (alek.a.petty@nasa.gov)

Abstract

We present an analysis of Arctic sea ice topography using high resolution, three-dimensional, surface elevation data from the Airborne Topographic Mapper, flown as part of NASA's Operation IceBridge mission. Surface features in the sea ice cover are detected using a newly developed surface feature picking algorithm. We derive information regarding the height, volume and geometry of surface features from 2009–2014 within the Beaufort/Chukchi and Central Arctic regions. The results are delineated by ice type to estimate the topographic variability across first-year and multi-year ice regimes.

The results demonstrate that Arctic sea ice topography exhibits significant spatial variability, mainly driven by the increased surface feature height and volume (per unit area) of the multi-year ice that dominates the Central Arctic region. The multi-year ice topography exhibits greater interannual variability compared to the first-year ice regimes, which dominates the total ice topography variability across both regions. The ice topography also shows a clear coastal dependency, with the feature height and volume increasing as a function of proximity to the nearest coastline, especially north of Greenland and the Canadian Archipelago. A strong correlation between ice topography and ice thickness (from the IceBridge sea ice product) is found, using a square-root relationship. The results allude to the importance of ice deformation variability in the total sea ice mass balance, and provide crucial information regarding the tail of the ice thickness distribution across the western Arctic. Future research priorities associated with this new dataset are presented and discussed, especially in relation to calculations of atmospheric form drag.

1 Introduction

Sea ice is a heterogeneous medium consisting of level and/or deformed ice floes of various spatial scales (hundreds of meters to several kilometers in diameter), separated by cracks and leads (regions of open water). Given sufficient stresses created by the combined forces of atmospheric/oceanic drag and/or ice-ice interaction, an ice floe can break apart (often

along a boundary with another ice floe), and the blocks of newly broken ice are redistributed vertically (e.g. Hopkins, 1998; Feltham, 2008). This pattern of deformation is referred to as a pressure ridge, with the upper surface extension commonly known as a sail, and the lower surface extension (into the ocean) known as a keel. Over first-year ice (FYI), distinct pressure ridges are commonly observed against the backdrop of smooth ice. Distinct pressure ridges can often extend laterally for tens/hundreds of meters across an ice floe. Over multi-year ice (MYI), however, networks of sails and rubble fields (at various stages of weathering) dominate the ice surface. Localized regions of deformation are created through convergent stresses within the ice pack (e.g. ice hummocks), while snow redistribution features also distort the ice surface, caused by erosion (sastrugi) and deposition (dunes) (Thomas and Dieckmann, 2009). Snow drift features can build up alongside sails (snow banks), smoothing their slope and extending their areal coverage. Visual imagery of the sea ice surface and a schematic of a typical FYI floe are given in Figure 1.

In ~~the winter Arctic ice pack~~ regions where the sail and keel density is high, the resultant obstructions to fluid flow (form drag) are thought to dominate the total drag on the ice cover over frictional (skin drag) effects (Arya, 1973; Leonardi et al., 2003; Tsamados et al., 2014). Ice deformation also impacts the internal strength of the ice pack, further altering the momentum transfer between the atmosphere and ocean (Martin et al., 2014). The sea ice strength is critical for understanding the resultant loads experienced by icebreaking ships and offshore structures (e.g. Timco and Weeks, 2010). Dynamical ice redistribution also contributes directly to the total thickness of Arctic sea ice (e.g. Thorndike et al., 1975), although this contribution to ice growth (over thermodynamics) has yet to be reliably quantified. In the Arctic, first order estimates suggest that deformed ice could contribute up to ~50% of the total sea ice volume (Wadhams, 2000). The ice topography impacts sea ice melt variability through melt pond formation (e.g. Perovich and Polashenski, 2012), where the flatter (variable) topography of FYI (MYI) promotes shallow but extensive (deeper but less extensive) melt ponds to form on the sea ice surface (e.g. Polashenski et al., 2012). Increased understanding of the sea ice topography is also of interest to the satellite (e.g. ICE-

Sat and CryoSat-2) and airborne (e.g. IceBridge) altimeter communities, as the interpretation of radar returns over pressure ridges remains challenging (e.g. Newman et al., 2014).

Studies investigating sea ice morphology in detail (i.e. those resolving distinct pressure ridges at the meter scale) have been based predominantly on airborne and underwater measurements (e.g. Tucker et al., 1979; Wadhams, 1980, 1981; Tucker et al., 1984; Wadhams and Davy, 1986; Haas, 2004; Martin, 2007; Rabenstein et al., 2010). More recently, Doble et al. (2011) used coincident Autonomous Underwater Vehicle (AUV) sonar and airborne laser profiling to perform a high-resolution, three-dimensional analysis of sea ice morphology, however this was limited to one region within the Beaufort Sea. Efforts have been made to compile existing datasets of pressure ridge morphology (Strub-Klein and Sudom, 2012) and airborne surface profiling (Castellani et al., 2014), to increase spatial and temporal coverage. Unfortunately, these data remain sparse (do not provide annual data on a basin-scale), and are predominantly based on linear profiling of surface features.

In this study, we utilize recent, high-resolution data from the Airborne Topographic Mapper (ATM) laser altimeter, flown as part of NASA's Operation IceBridge (OIB) mission (Krabill, 2013, updated 2015), to provide detailed information regarding the sea ice topography over a variety of Arctic sea ice regimes. IceBridge surveys conducted from Fairbanks, Alaska, acquire data over the predominantly FYI cover of the Beaufort and Chukchi seas, while surveys conducted from Thule and Kangerlussuaq, Greenland, sample the thicker, MYI pack of the Central Arctic, north of Greenland and the Canadian Archipelago. IceBridge offers a vast improvement over previous datasets used to investigate ice topography, due to the combination of high spatial coverage and the use of a conical scanner, which allows profiling of the ice surface in three dimensions. The continuous years of data collection (since 2009) also increasingly provides the potential to assess interannual variability within these two regimes.

The paper is organized as follows: Section 2 describes the data used in this study; Section 3 discusses the surface feature detection methodology; Section 4 presents and discusses the Arctic sea ice topography results; and conclusions are given in Section 5.

2 Data

NASA's OIB mission began collecting airborne observations of the polar regions in 2009; bridging the gap between NASA's Ice, Cloud, and land Elevation Satellite (ICESat) mission which retired in 2009, and the future ICESat-2 mission (Abdalati et al., 2010) scheduled for launch in 2017. OIB aircraft carry a suite of instruments designed to measure both land and sea ice, including their overlying snow cover. In this study, we primarily make use of data obtained by the Airborne Topographic Mapper (ATM) which is a conically scanning laser altimeter operating at 532 nm (Krabill et al., 2002). The ATM laser range and aircraft position/orientation are used to assign three-dimensional geographic coordinates to the point where each laser pulse reflects from the surface. The laser elevation data are referenced to the WGS-84 ellipsoid.

The across-track ATM swath width is determined by the maximum off-nadir scan angle, which is normally fixed at 15° , giving a swath width of ~ 250 m assuming a nominal flight altitude of ~ 460 m. Note that the scan angle was increased to 23° in 2010, increasing the swath width. Various statistics regarding the IceBridge sea ice flights and ATM data are shown in Table 1. Each elevation measurement has a footprint of ~ 1 m and a vertical accuracy of 10 cm or better (Krabill, 2013, updated 2015). Martin et al. (2012) showed that for the IceBridge missions specifically, the ATM has an estimated horizontal accuracy of 74 cm, a vertical accuracy of 6.6 cm, and a vertical precision of 3 cm. The high vertical resolution of the ATM make it well suited to the detection of ridges with a characteristic sail height (upper surface extension of the ridge) of around 1–2 m (e.g. Wadhams, 2000). The shot-to-shot ATM spacing is variable (due to the conical scan) and depends on the location of the shot within the swath, including a negligible shot spacing at the edge of the swath, and a variable shot spacing of several meters around the centre of the swath (Krabill, 2013, updated 2015). The shot spacing at the centre of the swath is determined by the off-nadir scan angle, scan frequency and the plane's altitude, pitch, roll and velocity.

The ATM surface elevation data are routinely used in the retrieval of sea ice freeboard, in conjunction with an automated sea ice lead detection algorithm (Onana et al., 2013)

based on coincident optical imagery of the surface from the Digital Mapping System (DMS) (Dominguez, 2010, updated 2015) as described in more detail by Kurtz et al. (2013). The DMS provides geolocated, panchromatic or natural color imagery that features an image resolution (pixel size) of ~ 10 cm, assuming a nominal flight altitude of ~ 460 m, and covers the entire width of the ATM scan. An Applanix POS/AV precision orientation system is used to geolocate and orthorectify the images (Brooks et al., 2012, updated 2015). Sea ice thickness is estimated from the sea ice freeboard using snow depth derived from the on-board snow radar system (Kurtz et al., 2013). The sea ice freeboard, thickness and snow depth product, at a 40 m spatial resolution that includes associated uncertainties, is available through the National Snow and Ice Data Centre (NSIDC) (IDCSI4, Kurtz et al., 2015). Since 2012, IceBridge has also provided a quick-look data product to the community, several months in advance of the standard product release (Kurtz et al., 2013). The IDCSI4 (2009–2013) and quick-look (~~2014~~2014–2015) 40 m spatially averaged sea ice datasets, are used in the surface feature–ice thickness regression analysis (Section 4.3). However, in this study, we mainly utilize the raw ~ 1 m horizontal resolution ATM elevation data to characterize the surface profile within the entire ATM swath. We primarily analyze the ATM data from 2009–2014 in this study, but also make use of the recently released 2015 data in the surface feature–ice thickness regression analysis (Section 4.3). The IceBridge sea ice data coverage over the western Arctic from 2009–2014 is shown in Figure 2.

Since 2011, OIB has also operated a ‘narrow scan’ ATM that features a lower across-track swath width of ~ 45 m, increasing the shot density in the centre of the swath (Krabill, 2014, updated 2015). These ‘narrow scan’ ATM data will be combined with the regular (‘wide scan’) ATM data in specific case studies to assess the potential uncertainties in the surface feature detection from the lower mean spatial sampling of the ‘wide scan’ ATM.

Visual validation of the surface feature detection scheme is carried out using the DMS imagery, while the POS/AV data is used for accurate geolocation of along-track positioning to determine bounds of evenly spaced ATM sections, as discussed later.

In addition to the OIB data, we use the European Organisation for the Exploitation of Meteorological Satellites (EUMETSAT) Ocean and Sea Ice-Satellite Application Facilities

(OSI-SAF) sea ice-type product (<http://saf.met.no/p/ice/>). This product provides daily sea ice type classification (open water, first-year ice, multi-year ice) based on the analysis of passive microwave and scatterometry data over the entire Arctic Ocean. We also utilize a dataset quantifying the distance to the nearest coastline (<http://oceancolor.gsfc.nasa.gov/DOCS/DistFromCoast/>) to understand sea ice topography/deformation as a function of coastline proximity.

Finally, we use the National Snow and Ice Data Center (NSIDC) regional mask of the Arctic Ocean and surrounding regions (http://nsidc.org/data/polar_stereo/tools_masks) to (i) ensure data is over sea ice, and (ii) to exclude regions (e.g. the Canadian Archipelago) from some of our analyses.

3 Sea ice topography characterization

There has been considerable discussion in the literature regarding pressure ridges and how they should be defined (e.g. Hibler et al., 1974; Wadhams, 1981; Wadhams and Davy, 1986; Martin, 2007). In this study we employ the elevation threshold approach, which has been used extensively in previous studies (e.g. Wadhams, 1980; Dierking, 1995; Martin, 2007; Tan et al., 2012; Castellani et al., 2014). Typically, a ridge (or surface feature) is detected if it has a height above the local level ice/snow surface greater than a chosen elevation threshold. Different elevation thresholds are then used to differentiate different topographic features of the ice cover. Castellani et al. (2014), for example, used 20 cm and 80 cm thresholds to differentiate ‘big’ sails from ‘small’ sails/snow features. Sastrugi heights were measured during the Sever airborne program (Warren et al., 1999, Figure 16b). A maximum sastrugi height of 46 cm (north of Greenland) was suggested based on quadratic fits to *in-situ* observations, meaning elevation thresholds higher than this are likely to exclude purely snow drift features. Results based on the lower elevation threshold mean one can not talk solely of deformation features, due to the likely inclusion of snow features. Alternatively, higher elevation thresholds could result in the exclusion of a significant fraction of the ice topography variability. The choice of cut-off height can provide a significant impact

on the sail/feature height distributions (e.g. Tan et al., 2012) and should be considered when analyzing the surface feature data derived in this study.

In this study, we choose to focus on a lower elevation threshold of 20 cm, but also provide summary results and discussion of the analysis using a higher 80 cm threshold. Our results are therefore more representative of the total ice and snow topography variability, which is an important factor when considering the potential impact of these results on estimates of atmospheric form drag over sea ice; an expected utility of this dataset in the near-future. For simplicity, we refer to all measured topographic snow or ice features in this analysis as ‘features’, instead of ridges or sails. Hibler et al. (1972) discussed the concept of a ridge link as the elementary linear segments composing otherwise complex two-dimensional deformation features. In fact, our feature detection algorithm (described in the following sub-sections) selects connected areas around a local maximum in each structure, and our individual features can therefore be thought of as intermediate quantities between an elementary ridge link and the full ridge structure. Visual inspection across several case studies (not shown) demonstrates that for the higher elevation threshold (80 cm), a linear approximation is more valid than for the features detected using a lower (20 cm) threshold. This idea will be explored further in Section 4.4.

It is worth noting that these features will likely differ from those detected using linear profiling. For one, the Rayleigh Criterion (separating peaks by measuring the depth of the crest between them) is not employed in this study, due to the three-dimensional nature of the data. The relatively wide (~ 200 – 300 m) swath width also means we are much more likely picking the peaks of the entire surface feature, as opposed to linear profiling studies, which detect the peak of the surface feature along a random (linear) profile. In regions where surface features are sparse, the two-dimensional ATM scan makes it much more likely that we will detect a surface feature (higher than the chosen elevation threshold). These differences in approach, and the impact on the resultant sail heights especially, are discussed in more detail by Lensu (2003). The feature height distributions in this study are thus likely to differ from those presented previously (e.g. Wadhams, 1980), however, the distributions will be presented in a similar manner to enable comparison with these earlier

analyses. Future work will attempt to understand, in more detail, the potential differences between the results presented here, and the results reported by previous, linear profiling studies.

3.1 Feature-picking methodology

The following sections detail the surface feature detection scheme that is visually demonstrated in the case study given in Figure 3. Further case studies are given in the supplementary information, covering a range of ice types (Figures S1–S3). Note that these case studies are based on all individual ATM points within the bounds of the DMS image (~350 m along-track in Figure 3) for visualisation purposes. In the processing of all ATM data (all results presented in Section 4), the size of each ATM section processed is increased to 1 km along-track. This was a balance between having enough data to reliably estimate a level ice surface (discussed in the next sub-section), and a small enough region not be influenced by changes in the sea surface height. The Rossby radius, which indicates the length-scale of ocean eddies, is $\gtrsim 10$ km for typical polar latitudes (Chelton et al., 1998); an order of magnitude greater than the 1 km section length chosen.

3.1.1 Level ice surface calculation

To detect features on the ice surface, we first define a level ice surface. Previous approaches include detecting regions where the ice elevation change is less than some threshold over some along-track distance (e.g. Wadhams and Horne, 1980), or detecting the modal ice surface within a given region (e.g. Williams et al., 2015). In this study, we take a similar approach to the recent, three-dimensional, Antarctic study of Williams et al. (2015) and detect the ‘most level’ ice surface within the relevant section. We calculate the cumulative elevation distribution of all ATM points within a 1 km section and find the percentile bin (using a bin width of 20%) with the smallest elevation increase. This is equivalent to finding the modal elevation across percentile bins. The level ice surface calculation is demonstrated in Figure 3c (and other case studies in the supplementary information). In Figure 3c, the lowest

elevation change is found at 15–35%, meaning the level ice elevation was taken at the 25th percentile of the elevation distribution, corresponding to a level ice elevation of -8.35 m relative to the WGS-84 ellipsoid. Visual inspection using DMS imagery across a variety of case studies showed that a bin width of 20% proved to be the most reliable. Maps of the calculated level ice elevation percentile from 2009–2014 are shown in the supplementary information (Figure S4). In the case of a saddle point, where two shallow elevation gradients are separated by a higher elevation gain (see Figure S1 for an example), the higher of the surfaces is used, as the lower surface is assumed to come from either a lead or a refrozen lead, which could result in an over-estimation of the surface features in these sections.

3.1.2 Data interpolation

All the raw, irregularly spaced ATM elevation data (within each 1 km section) are then projected on to a regularly spaced horizontal grid based on the EPSG:3413 polar stereographic projection (https://nsidc.org/data/icebridge/projections_grids.html), using a linear interpolation scheme. The level ice elevation is subtracted to convert the data to a regularly spaced grid of elevation relative to the level ice surface (Figure 3d). We note that, due to the on-ice scan pattern of the ATM, grid cell values are informed by a variable number of raw measurements, wherein the effects of spatial sampling and instrument noise will vary across the gridded elevations. Specifically, the higher shot spacing in the middle of the ATM swath poses a potential for over-interpolation, depending on the horizontal grid resolution chosen. To investigate this in more detail, the shot spacing was analyzed for several flights across all OIB years, as summarized in Table 1 and demonstrated in the supplementary information (Figure S5). We analyzed the near-maximum (99th percentile) spacing in each section, as the maximum spacing is often influenced by isolated ATM points caused by adjacent data drop-out. The mean shot spacing is also shown in Table 1. This demonstrates that across all years (2009–2014), most of the data (99%) have a shot spacing <4 m, meaning a horizontal grid resolution of 2 m was chosen (over half the near-maximum spacing). Problems can also occur in interpolation around the ATM swath edge within the convex hull (the maximum region bounded by the corners of the ATM section), especially when the plane deviates

from a linear trajectory (sections are not analyzed if the pitch and/or roll is greater than a set threshold as discussed in Section 3.1.4). A K-D Tree algorithm (Maneewongvatana and Mount, 1999) is therefore used to detect the proximity of the projected ATM data to the raw ATM data. If the nearest raw ATM data point is further than a set distance away (5 m), then that data point is discarded.

3.1.3 Identifying unique surface features

All the gridded ATM elevation data below the chosen feature height threshold (20 cm) are then masked. We scan the masked/gridded ATM data for connected data points using a 3×3 structuring element that considers data points to be connected if they touch adjacently or diagonally. Features which occupy an area less than a set threshold (100 m^2) are discarded. The information is still retained in the ‘bulk’ ice topography statistics (area fraction/volume of surface features), as discussed later.

Further segmentation is carried out to increase the geometrical characterization of the surface features. We search each of the connected components for local maxima, and a watershed filter (Soille and Ansault, 1990) is used to find the shallowest contour that separates each local maxima. These local maxima must be separated from each other (horizontally) by at least 10 m, as in previous studies (e.g. Martin, 2007). This segmentation is highlighted by the large feature in Figure 3 that has been split into several segments, each dominated by a local maxima. This step is especially crucial when using a relatively low elevation threshold (e.g. 20 cm as in most of this study) as large features often merge together around their lower elevation bases.

To understand the impact on the surface feature detection from the choice of grid resolution (2 m) used, Figure 4 shows the feature detection scheme using a 1 m, 2 m and 4 m grid resolution. Figure 4 also shows the feature detection using the default 2 m grid resolution and incorporating the ‘narrow scan’ ATM data (discussed in the previous section). The results show negligible visual difference in the gridded ATM data, and only small differences in the calculated feature statistics (number and area coverage). The ‘narrow scan’ data, while successfully filling in some of the lower spot spacing regions in the middle of

the swath (shown visually in Figure 4b), ~~doesn't~~does not appear to provide much additional value, meaning we choose to proceed solely with the 'wide scan' ATM data for all the analysis presented hereafter. Several other case studies were analyzed (not shown) and all demonstrate similar results. Note that Figure 4 demonstrates the feature detection scheme over a typical 1 km section.

3.1.4 Individual feature and bulk topography statistics

Before proceeding with the ATM processing, the POS/AV data are used to assess the pitch, roll and altitude of the plane within the relevant 1 km ATM section. If the mean pitch or roll is greater than 5° or the mean altitude of the plane is outside the range 300–700 m (based on the nominal sea ice flight altitude of ~ 460 m), then the ATM section is not processed.

The number of ATM points within the 1 km section is also calculated as low-lying clouds, leads and ATM malfunction can result in significant regions of ATM drop-out. The mean number of ATM points within a 1 km ATM section (summarized in Table 1) varies from $\sim 40,000$ points in 2009 to $\sim 20,000$ points from 2011 onwards, when the ATM scan angle and frequency were reduced. We therefore use a threshold of 15,000 ATM points (75% of the minimum) to ensure reasonable data coverage within each ATM section analyzed.

We calculate the surface feature height (h_f) by finding the height of all points within each unique surface feature relative to the level ice surface, and define h_f as the peak (maximum) value. We calculate the surface feature area (A_f), which is equal to the number of grid points within each feature multiplied by the square of the grid resolution chosen (2 m). We compute the centre of mass of each feature (\mathbf{r}_c), which we use as the feature position. Note that we do not weight the surface feature heights based on their areal coverage (A_f).

While not being a major focus of this study, we also compute the covariance matrix (analogous to an inertia matrix) of each feature as:

$$\mathbf{C} = \int_{A_f} (\mathbf{r}^i - \mathbf{r}_c) \times (\mathbf{r}^i - \mathbf{r}_c) d^2 \mathbf{r}^i \quad (1)$$

where \mathbf{r}^i is the position of each point within the unique feature, and the integration is performed over the full feature area. C_s and C_p are the small (secondary) and large (primary) eigenvalues of \mathbf{C} respectively, meaning the ratio $R = (C_p/C_s)^{1/2}$ gives the degree of elongation of the feature (the ratio of long over short axis assuming an elliptical shape). We present this analysis to highlight further potential applications of this unique dataset, and to demonstrate the impact of the elevation threshold on the geometry of the features detected in this study (Section 4.4).

Several additional ‘bulk’ properties of the ice topography are calculated directly within the feature detection scheme. For all (1 km) ATM sections we collect the: (i) mean x/y section location, (ii) ATM swath area coverage (used to estimate ice area assuming minimal open water), (iii) number of features detected, (iv) feature area coverage (all, including ‘small’ features $<100 \text{ m}^2$), (v) feature area coverage (only ‘large’ features $>100 \text{ m}^2$), (vi) mean surface feature height (all, including ‘small’ features), and (vii) mean surface feature height (only ‘large’ features). The volume of surface features per unit ice area, V_f , is calculated by multiplying the appropriate mean feature height (with or without small features included) by the total feature area coverage within the section, and dividing by the total swath area (units of m). Note that here we use the mean height of all the points included within each feature to calculate the mean feature height and volume (within each section), whereas in the individual feature height analysis, we take the maximum (peak) height of the feature. Using the maximum feature height has the benefit of being independent of the elevation threshold (if the same feature is detected across different thresholds) and the size of the feature detected. The surface feature height, h_f , is thought to be more relevant to form drag calculations (discussed in Section 4.4). The surface feature volume (per unit area), V_f is an integrator of the size (height and areal coverage) and density of the surface features, and is more of an indicator of the total ice topography variability.

Following Richter-Menge and Farrell (2013), we analyze the data within the Central Arctic (CA) region, which extends from 210°E to 10°E and 81°N to 90° , and Beaufort/Chukchi (BC) region, which extends from 190°E to 240°E and 69°N to 79°N , as highlighted in Figure 5. The CA region is dominated by old (Maslanik et al., 2011) and thick (Laxon et al.,

2013) MYI, while the BC region contains a variable mix of FYI and MYI (Maslanik et al., 2011). To delineate the results based on the estimated ice type (FYI or MYI), we take the mean of all daily OSI-SAF ice type data within the dates of the relevant OIB yearly sea ice campaign. For ice to be classified as either MYI or FYI, we require over 80% of the data at a given grid cell to be consistently one ice type (across the daily range). Locations estimated to include a mixture of FYI and MYI (<80% of one ice type) are not included in the delineation, but are still kept in the regional analyses. As the OSI-SAF ice type mask excludes some data along the coast, we assume that all locations along the CA (BC) coast are MYI (FYI) in the absence of an OSI-SAF estimate. Note that a polar hole in the OSI-SAF data prevents some ice type discrimination in this region, as shown in the maps of ice type presented in the following section. The ice type mask is projected onto the relevant dataset using a nearest neighbour interpolation scheme. The FYI/MYI coverage from the ATM sections used in this study is summarized in Table 1.

4 Results and discussion

4.1 Ice topography characterization

4.1.1 Feature height variability

4.2 Feature height variability

Figure 5 shows maps of the surface feature height (h_f) from 2009–2014, detected using an elevation threshold of 20 cm. The results demonstrate predominantly higher surface features ($\gtrsim 1$ m) in the CA region, mainly north of Greenland and the Canadian Archipelago, and predominantly lower features ($\lesssim 1$ m) in the BC region. Feature heights are markedly higher ($\gtrsim 1.5$ – 1.7 m) along the northern coast of Greenland and, in 2012, along the eastern coast of Greenland, within the Fram Strait. The feature height also increases towards the Beaufort Sea coastline in 2012 (increasing up to ~ 1.2 m), which coincides with a tongue of MYI that same year. This tongue of MYI extending from the CA to the southern Beaufort Sea

Figure 6 shows the probability distributions of surface feature heights within the CA and BC regions for all features, and for the features estimated as either FYI or MYI, using the OSI-SAF ice type mask (discussed in Section 3). We also exclude data within the Canadian Archipelago and Fram Strait (using the NSIDC Arctic Ocean mask) from this analysis. Statistics from these distributions are summarized in Table 2. Note that a bin width of 10 cm is used in these probability distributions, although the mean and standard deviation are calculated independently. Before interpreting these distributions, it is worth noting that the spatial sampling in 2009 is lower than all other years (Table 1) and is weighted more towards the thick ice directly north of Greenland (Figure 5). The sampling in the BC region in 2011 is also noticeably sparse. The spatial sampling increases markedly in 2012–2014; allowing for a more reliable discussion of interannual variability within both regions.

The mean feature height in the CA region decreased from 1.46 ± 0.87 m (2009) to 1.24 ± 0.76 m (2013), before increasing to 1.40 ± 0.85 m (2014). The height of the features estimated as MYI showed a similar pattern, decreasing from 1.54 ± 0.90 m (2009) to 1.25 ± 0.77 m (2013), before increasing to 1.42 ± 0.85 m (2014). The mean FYI feature height across all years was 1.03 ± 0.59 m (0.33 m lower than the MYI mean), with no obvious trend or pattern. As shown in Table 1, the ice estimated as FYI is an order of magnitude lower (1–7%) than the ice estimated as MYI. The FYI feature height in 2014 was anomalously low (0.70 ± 0.39 m), and the distribution was noticeably skewed towards lower feature heights. However, this distribution was influenced by the low sampling of FYI in the CA region that year (MYI/FYI estimated coverage summarized in Table 1). The FYI that was sampled appears to be located to the north-east of Greenland, near to the ice edge.

In the CA region, the number of features classified as MYI is considerably greater than those classified as FYI (2.6×10^6 compared to 0.8×10^5), meaning the changing topography of the MYI is dominating the response of the CA feature height variability over the small changes in MYI coverage. The modal feature height decreased from 0.65 m (2009) to 0.45 m (2010–2014 mean) in both the MYI and all feature distributions. The modal feature

height of the FYI and MYI ice is similar (0.45 m mean), meaning the longer tail of the MYI probability distribution is causing the strong difference in the mean surface feature height. Note that a discussion of potential causes of this interannual variability is provided later, in Section 4.1.2.

To investigate the tail of the distribution in more detail, Figure 7 shows the distributions on a log-linear scale, clearly highlighting the exponential nature of the surface feature height distributions found in this study. An ordinary exponential distribution of sail heights was proposed by Wadhams (1980), which has been validated (to varying degrees) by further observations of sail/feature height (e.g. Tucker et al., 1979; Dierking, 1995; Martin, 2007; Rabenstein et al., 2010; Tan et al., 2012). Note that As discussed earlier (Section 3), the feature heights presented here represent the peaks of the unique two-dimensional features, so a direct comparison between these earlier studies (that detect the peak of the surface feature along a random (linear) profile) is not appropriate. Figure 7 demonstrates that a higher probability tail is prominent in the CA region in 2009 and 2014, to a lesser extent.

The MYI and FYI surface feature height is lower in the BC region compared to the CA region, suggesting contrasting responses of the ice within these different regimes. The mean feature height in the BC region still shows a similar interannual pattern, decreasing from 1.14 ± 0.74 m (2009) to 0.94 ± 0.57 m (2013) before increasing to 1.03 ± 0.58 m (2014). This appears to be driven, in-part, by the decreasing height of the MYI features (1.33 ± 0.85 m in 2009 compared to 1.07 ± 0.65 m in 2013), although the number of features classified as MYI is of a similar order of magnitude to the FYI in the BC. Overall, the number of features detected within the BC region has increased by almost a factor of 3 since 2009 (3.3×10^5 in 2014 compared to 1.2×10^5 in 2009), consistent with increased IceBridge coverage. The decrease in 2013 appears to be caused by the decreased coverage of MYI in the BC region, as the MYI feature height remained constant, but the relative quantity of features detected as MYI decreased. In 2014, the feature heights in the BC region classified as MYI and FYI were similar (1.03 ± 0.58 m and 1.02 ± 0.58 m respectively). Figure 7 shows a similar exponential distribution in the feature height tail, although the probability of ‘high’ features

(>2 m) is consistently lower than the CA region (a steeper gradient in the log-linear trend), as expected.

The feature height probability distributions for all features classified as either FYI or MYI (independent of region) are shown in the supplementary information (Figure S6). The distributions again show clear differences across ice types, with the mean feature height higher for the MYI (~ 1.3 m) compared to the FYI (~ 1.0 m), although the modal feature height, is similar (~ 0.45 m) across both ice types.

Table 3 provides statistics of the probability distributions of surface feature height, based on the higher (80 cm) elevation threshold processing. The distributions still show differences across regions, with a higher mean feature height in the CA (2.09 ± 0.74 m) compared to the BC region (1.96 ± 0.67 m), although this difference is significantly less than for the 20 cm results. Again, the mean modal feature height is similar (1.65 m for the CA and 1.55 m for the BC). These results further demonstrate the strong impact on the feature height distributions from the choice of cut-off elevation.

4.2 Surface feature volume

4.1.1 Feature volume variability

Figure 8 shows maps of the mean surface feature volume per unit area (V_f) using the surface elevation threshold of 20 cm. Note that while these results include ‘small’ (<100 m²) features, V_f excluding ‘small’ features showed similar results, with differences on the order of 0.01 m (not shown). It is worth noting again that V_f differs from the individual feature height analysis as it represents the effective thickness of all surface features (total feature volume in the section spread over the entire swath area) within each 1 km ATM section. Figure 8, however, demonstrates a pattern consistent with the surface feature height analysis, including a higher V_f ($\gtrsim 0.15$ m) in the CA region, and a lower V_f ($\lesssim 0.15$ m) in the BC region. V_f is greatest along the Greenland coastline (increasing up to ~ 0.3 – 0.4 m), especially towards northern Greenland (across most years) and along the eastern Greenland coast within the Fram Strait. V_f also increases towards the Beaufort Sea coast in 2012.

The regional variability in V_f appears stronger than the feature height variability, implying variability in the areal coverage of the features consistent with the feature height variability (h_f) variability. Repeating the analysis for both the mean areal coverage and mean height of features (not shown) demonstrates a roughly equal contribution to the regional volume variability from each term (features increasing in area and height concurrently).

To assess the V_f variability across regions and ice type, Figure 9 shows the probability distributions of V_f within the CA and BC regions, for all 1 km ATM sections and for the sections estimated as FYI or MYI. Statistics from these distributions are summarized in Table 4. Note that as these data are based on the 1 km ATM sections (as opposed to individual features), the data sampling is significantly reduced.

In the CA region, V_f decreased from 0.19 ± 0.11 m (2009) to 0.15 ± 0.15 m (2013), before increasing to 0.19 ± 0.13 m (2014). Similar to the feature height analysis, the number of sections classified as MYI is over an order of magnitude higher across all years than the FYI (4.2×10^4 compared to 0.2×10^4), meaning the changing topography of the MYI is dominating the response of the V_f variability in the CA region (over changes in the MYI coverage), as demonstrated by the coincident variability in the MYI V_f . The FYI mean V_f (0.11 ± 0.07 m) is lower than the MYI mean V_f (0.18 ± 0.12 m) and again shows no discernible trend/pattern. The modal V_f in the CA experienced a more variable decline from 2009 to 2014 across both FYI and MYI distributions. In 2010 (all sections) and 2010/2014/All (FYI) the modal V_f was 0.01 m, highlighting the prevalence of (1 km) ATM sections with a negligible V_f (above the 20 cm elevation threshold). Note that this was not demonstrated in the surface feature height analysis as the size of the features is not taken into account. This highlights how the three-dimensional surface feature volume analysis presented is a more useful indicator of the total ice topography variability, compared to linear transects of peak feature heights, as discussed in Section 3.1.4.

In the BC region, V_f demonstrates a similar interannual pattern, decreasing from 0.11 ± 0.08 m (2009) to 0.06 ± 0.07 m (2013) before increasing to 0.09 ± 0.07 m (2014). Similar to the CA, this appears to be driven, in-part, by the decreasing MYI V_f (0.16 ± 0.08 m in 2009 compared to 0.11 ± 0.07 m in 2013). The decrease in 2013 appears to be driven by a decrease

in the FYI V_f and, to some-degree, by an increased fraction of FYI sections. In the BC region in 2014, the MYI and FYI V_f are similar (0.09 ± 0.07 m to 0.08 ± 0.08 m). The number of sections has increased by a similar ratio (3) than the increase in features detected, suggesting consistency in the density of features detected.

4.1.2 Potential causes of feature height and volume variability

A recent study by Kwok (2015) provided estimates of the relative contribution to sea ice thickness variability from convergence (dynamics) and melt (thermodynamics) north of Greenland and the Canadian Arctic Archipelago. The strong increase in both h_f and V_f in the CA region between 2013–2014 found in this study is consistent with the strong increase in convergence driven ice growth (within a similar region) through the preceding summer, estimated by Kwok (2015) using sea ice drift and assumptions of mass conservation. Strong ice convergence was also estimated by Kwok (2015) in December 2008, which may be linked to the high features observed in this study along the CA coastline in 2009. The Kwok (2015) study also showed that variability in the convergence driven ice growth may be higher than thermodynamic (melt driven) changes, highlighting the important role of ice deformation variability in the Arctic sea ice mass balance.

In the BC region, the feature height and volume variability is driven more by variability in the presence of MYI. The presence of MYI in the Beaufort Sea (e.g. the tongue of MYI extending from the CA to the southern Beaufort Sea in 2012) is the result of a complex interplay between the impact of the Beaufort Gyre on ice drift and the melting out of ice in the Beaufort/Chukchi region (e.g. Hutchings and Rigor, 2012). The strong increase in the BC MYI coverage in 2014 has also coincided with an overall recovery of older ice across the Arctic since 2013 (see Figure 4.3a in ?, based on ice age data from Tschudi et al. (2015)). Both Tilling et al. (2015) and Kwok and Cunningham (2015) showed an increase in Arctic sea ice volume in 2014, linked to the retention of MYI.

While our study provides information regarding the surface feature height-variability, the underside extension of the pressure ridge system, the keel, is thought to be significantly larger in size (e.g. Wadhams, 2000). Strub-Klein and Sudom (2012) recently compiled

and analyzed several ridge morphology datasets collected over the last few decades. They demonstrated that, on average, the maximum keel depth is around 4 times larger than the maximum sail height, while the keel width is around 6–7 times wider than the sail width. This suggests a keel volume up to ~ 20 – 30 times larger than sail volume. The changes in surface feature volume, V_f , demonstrated in this study (± 0.05 m) suggest, to a first order approximation, total deformation variability up to ~ 1 m, if the keels are taken into account. This simple estimate assumes minimal impact from snow redistribution variability, which will act to reduce the magnitude of this estimate. Unfortunately, detailed information regarding snow variability (spatial and temporal) over Arctic sea ice is lacking. A recent study by Kwok (2015) provided more information regarding the relative contribution to Arctic sea ice thickness variability from dynamics and thermodynamics. Using sea ice drift and assumptions of mass conservation, Kwok (2015) showed that the variability in the convergence driven ice growth was higher than thermodynamic (melt driven) changes, highlighting the important role of ice deformation variability in the Arctic sea ice mass balance. The strong increase in V_f in the CA region between 2013–2014 found in this study is consistent with the strong increase in convergence driven ice growth (within a similar region) demonstrated by Kwok (2015) through the proceeding summer.

4.2 Sea ice topography as a function of coastline proximity

The maps of surface feature height, h_f (Figure 5) and mean surface feature volume, V_f (Figure 8) suggest a strong relationship between surface feature variability and coastline proximity. Tucker et al. (1979) discussed how the presence of landfast ice along the coast (ice that is fixed to the coastal boundary), can result in increased ice deformation compared to ice located further offshore. The convergent ice drift in the CA is also thought to contribute significantly to increases in ice deformation and thickness across much of this region (e.g. Kwok, 2015). The increased age of the ice along the CA coast (Maslanik et al., 2011) may also provide more time for the ice to thicken through both thermodynamic and dynamic processes. In the BC region, the mean winds (Figure 2) and ice drift are aligned more parallel to the coast, suggesting less of an impact from coastal boundary stresses. Mahoney

et al. (2014) used Radarsat Synthetic Aperture Radar (SAR) imagery to show that landfast ice can extend over 100 km offshore of Alaska, although there is significant spatial and temporal variability in the width of this BC landfast ice regime. To investigate these ideas in more detail, we analyze the coastal dependency of the surface feature height, h_f , and mean surface feature volume, V_f , data presented in the previous section.

Figure 10 shows h_f represented by box and whisker plots, separated into coastline proximity bins (100 km wide) for the BC and CA regions. The coastal proximity data was presented in Section 2 and a map of the coastline proximity is given in the supplementary information (Figure S7). Note that less weight should be given to the BC results as there is much less data near to the coast (2012–2014 have the highest coverage of data near to the BC coastline). It is also worth noting that the CA coastal region (northern Greenland and the Canadian Archipelago) is dominated by MYI, whereas the BC coastal region (northern Canada and Alaska) shows greater interannual variability in the dominant ice type, as discussed previously.

Despite the consistent presence of MYI over much of the CA region, Figure 10 demonstrates a strong increase in h_f with increasing coastline proximity (in terms of the 25th, 50th, 75th and 95th percentiles) up to 900 km away from the coast. The 0–100 km bin shows a significant fraction ($\sim 5\%$) of features higher than ~ 3.3 m, compared to the distance bins further from the coast. The results show moderate interannual variability, with 2009 showing higher features (compared to the other years) from 0–200 km from the coast, while 2014 shows higher features from 100–800 km from the coast, highlighting that the increase in surface feature height in 2014 manifested over much of the CA region, while in 2009, the high surface features were contained mostly along the CA coastline.

The BC region also demonstrates an increase in surface feature height with increasing coastline proximity, although this is mainly observed in the upper percentiles (75th and 95th) of the distributions. The median feature height across the 0–400 km percentile bins shows higher variability than the CA region. The 95th percentile results from 0–300 km are lowest in 2013, which may be due, in-part, to the thin, level ice sampled in the Chukchi Sea north of Point Hope in 2013 (Richter-Menge and Farrell, 2013). The feature heights also tend to

increase (across most percentile ranges) at distances greater than 700 km away, which is likely due to the import of MYI from the CA into the northern Beaufort Sea.

The surface feature volume (per unit area), V_f , results, shown in Figure 11, demonstrate a similar and perhaps more obvious coastline relationship. In the CA region, 2009 and 2014 show increases in V_f closer to the coastline, similar to the feature height results discussed previously. The median V_f across all distance bins shows greater interannual variability compared to h_f . In the BC region, the V_f increase towards the coast (75th and 95th percentile) is much clearer than the h_f results, and the interannual variability is again higher. This suggests that the three-dimensional surface feature volume data is a more useful measure of coastal topographic variability compared to the surface feature heights, especially compared to data compiled from linear transects.

Note that reducing the bin width to 10 km and analyzing the coastline dependency on this smaller scale didn't demonstrate any obvious landfast ice edge (a step change in ice topography) across either region. As the location of the landfast ice edge is spatially and temporally variable (e.g. Mahoney et al., 2014), this was somewhat expected. A more detailed analysis of specific IceBridge flight lines in isolation is therefore recommended, to assess the contribution to ice topography from landfast ice in more detail.

4.3 Relationship between sea ice thickness and surface feature variability

The relationship between sail height and sea ice thickness has been discussed in several previous studies of sea ice pressure ridging, with varying conclusions drawn. Tucker and Govoni (1981) were perhaps the first to observe the link between sail heights and the thickness of the ice blocks from which they formed, which they assumed to be representative of the parent ice thickness. A square root relationship was presented, which was validated by additional *in-situ* observations (Tucker et al., 1984) and the two-dimensional particle modelling study of Hopkins (1998). More recently, Martin (2007) found only a weak correlation between sail height and the parent ice thickness using a variety of linear surface profiling datasets and assuming a similar square root relationship. A stronger, but still only moderate, correlation was found when a linear fit was assumed.

To investigate this further, Figure 12 shows the correlation between the total sea ice thickness, H_i , taken from the IceBridge sea ice thickness product (IDCSI4 from 2009–2013 and quick-look in 2014, as described in Section 2) and the surface feature height, h_f , derived in this study. Both datasets are averaged over 10 km (along-track) sections to smooth the data, and the IceBridge thickness data are interpolated onto the mean surface feature height sections using linear interpolation. A regression is carried out assuming a square root relationship: $h_f = b\sqrt{H_i}$, where b is a regression coefficient calculated through a least-squares fit. It is worth noting that the regressions presented here are between the (peak) surface feature height and the total sea ice thickness calculated using measurements of sea ice freeboard and assumptions of hydrostatic equilibrium, and thus implicitly include the deformed and undeformed ice. The regressions are therefore expected to differ from those presented in previous analyses, that correlated the sail heights with the thickness of the ice blocks within the ridge (e.g. Tucker et al., 1984) or the level ice thickness directly (e.g. Martin, 2007). Our likely inclusion of snow drift features will also impact our results, and weaken the physical links to pressure ridging constraints.

The regressions between the surface feature height, h_f , and the total ice thickness, H_i , are shown in Figure 12. The regression using all years of data (2009–2014) demonstrate strong correlation ($r=0.730.72$, $b=0.72$). The annual regressions (given in Figure 12) show that the strongest correlation is observed in 2013 ($r=0.820.81$). Strong correlations are observed across all other years ($r=0.680.67$ – $0.75.76$), except for 2009, where only a weak ($r=0.390.35$) correlation, and higher than average regression parameter ($b=0.86$), is found. This may be due to the decreased ATM coverage in 2009, although Figure 12 suggests that the ice thickness results were also skewed low compared to the relationships demonstrated across all other years. Note that changing the averaging length scale (5 km and 20 km), or assuming a linear relationship (not shown), resulted in weaker correlations. In general, the consistency of these regressions (similar b value) across different years (2010–2014) suggests consistency in the response of the ice to dynamical forcing.

To demonstrate the potential utility of these findings, Figure 13 shows the sea ice thickness from the derived IceBridge product (in 2013 and 2014), and the sea ice thickness

estimated using the surface feature height, h_f , and the relationship $h_f = b\sqrt{H_i}$ (both using the 10 km mean data). ~~A constant~~ Here we use the recently released 2015 ATM data to calculate the surface feature height (not presented earlier), and the 2015 quick-look sea ice thickness data. A regression parameter of $b=0.72$ was used based on the regression analysis across 2009–2014. The maps show qualitatively the close correspondence between the spatial variability in ice thickness ~~(across both years) and the temporal variability within the~~ across the CA and BC regions from both the IceBridge product and the ice thickness estimated from h_f . ~~These~~ Differences between observed and predicted ice thickness are up to ± 2 m in some regions, although this is within range of the combined root mean squared error of the regression (1.10 m, given in Figure 13) and the mean 10 km IceBridge thickness uncertainty of 0.8 m (calculated from the raw IceBridge uncertainty estimates across all years). In general, the results provide a useful means of understanding ice topography and thickness variability in more detail, and demonstrate how the ice thickness estimates could provide a useful proxy for ice thickness, especially in regions where measurements of leads, which are needed to calculate sea ice freeboard, are sparse.

4.4 Feature geometry and the potential for additional feature characterizations

As discussed in the introduction, sea ice topography is crucial for estimating atmospheric form drag over Arctic sea ice. Calculations of atmospheric form drag require estimates of the surface feature height (as presented in this study), along with the surface feature density (e.g. Arya, 1973; Tsamados et al., 2014). Linear profiling studies calculating atmospheric form drag (e.g. Castellani et al., 2014) simply measure the spacing between unique surface features along the linear profile, assuming that the features are randomly orientated and sufficiently sampled for this assumption to be valid. Mock et al. (1972) showed that for randomly oriented ridges, the average ridge frequency, μ , and the average ridge ‘density’ (the ratio of the total length of ridges per unit area), R_D , are related via $\mu = (2/\pi)R_D$. In contrast to linear profiling studies, R_D can be calculated directly with this data as $R_D = \sum_i L^i / A_{tot} = L_{tot} / A_{tot}$, where the sum is over all features within the total ice/swath area (given a fully concentrated ice pack). Assuming an elliptically shaped feature, the length

of the major axis of a specific feature can be estimated as $L_i = \frac{2}{\sqrt{\pi}}(RA_{sf})^{0.5}$, where $R = (C_p/C_s)^{0.5}$ is the degree of elongation of the feature, as mentioned in Section 3. An average spacing between features can then be estimated from R_D as $X_f = \pi/(2R_D)$.

A crucial factor in this calculation is the assumption of linear features in the estimation of ridging density. Figure 14 shows the mean aspect ratio (R) of all features detected across one year (2012) using the 20 cm and 80 cm elevation cut-off thresholds. For the 20 cm elevation cut-off (as used throughout much of this study), the aspect ratio of all features appears to be $\sim 2\text{--}2.5:1$, while for the 80 cm threshold, the estimated aspect ratio is $\sim 3\text{--}4:1$. The assumption of linearity is somewhat arbitrary, but is clearly more questionable in the 20 cm case. We have decided not to present calculations of ridging density and form drag estimates as we believe a more thorough analysis is needed, which is beyond the scope of this current study. Understanding the surface feature geometry variability, and linking this with estimates of feature density relevant to form drag parameterizations and also melt pond formation will be a crucial next-step in the utility of this unique, three-dimensional, sea ice topography dataset.

5 Conclusions

We have presented a detailed characterization and analysis of Arctic sea ice topography using high resolution, three-dimensional, surface elevation data from the the Airborne Topographic Mapper, flown as part of NASA's Operation IceBridge mission. Surface features in the sea ice cover (caused by ice deformation and/or snow redistribution) are detected using a newly developed feature-picking algorithm. We derive information regarding the individual height and volume (per unit area) of surface features from 2009–2014 within the Beaufort/Chukchi and Central Arctic regions, across both first-year and multi-year ice regimes.

The results demonstrate that Arctic sea ice topography exhibits significant spatial variability, mainly driven by the increased surface feature height and volume in the multi-year ice. The multi-year ice topography also exhibits greater interannual variability compared to the first-year ice topography. Multi-year ice dominates the Central Arctic region and con-

tributes significantly (but variably) to the Beaufort/Chukchi region. The tail of the surface feature heights (>2 m) exhibits a clear exponential distribution, further validating previous observational studies. The ice topography also shows a strong coastal dependency, with the feature height increasing as a function of proximity to the nearest coastline, especially north of Greenland and the Canadian Archipelago. The coastal proximity results provide useful context regarding interannual variability in the location of surface topography features. A strong correlation between surface feature height and ice thickness (from the IceBridge sea ice product) is found, based on a square-root relationship. The consistency of these regressions across different years (2010–2014) suggests consistency in the response of the ice to dynamical forcing. Overall, the results allude to the importance of regional and interannual ice deformation variability in the total sea ice mass balance, and provide crucial information regarding the tail of the sea ice thickness distribution across the western Arctic.

While this study presents the use of IceBridge data to understand the Arctic sea ice topography, future work will attempt to understand the impact of ice topography on estimates of atmospheric form drag. Another exciting prospect involves the extension of this analysis to Antarctic sea ice, where observations of the sea ice state are extremely lacking.

Acknowledgements. This work was supported by [NASA](#) the [NASA IceBridge Project Science Office](#), [NASA](#) grant NNX13AK36G, and the NOAA Ocean Remote Sensing Program.

The IceBridge ATM data were obtained from <https://nsidc.org/data/docs/daac/icebridge/ilatm1b/> (regular - Wide Swath) and <http://nsidc.org/data/ilnsa1b> (Narrow Swath). The IceBridge DMS imagery was obtained from <http://nsidc.org/data/iodms1b>. The IceBridge IDCSI4 and quick-look sea ice data were obtained from http://nsidc.org/data/docs/daac/icebridge/evaluation_products/seaice-freeboard.html and <http://nsidc.org/data/idcsi4.html>. [The daily OSI-SAF ice type data was obtained from](#) <http://saf.met.no/p/ice/> [and the nearest coastline proximity data was obtained from](#) <http://oceancolor.gsfc.nasa.gov/DOCS/DistFromCoast/>.

We acknowledge the efforts of the IceBridge teams in the collection and processing of data utilized in this study. ~~The daily OSI-SAF ice type data was obtained from and the nearest coastline proximity data was obtained from~~

[All data processing scripts used in this study have been made publicly available at](#) http://www.github.com/akpetty/IB_TOPO.git. [The primary author may be contacted for any further data requests.](#)

References

- 5 Abdalati, W., Zwally, H., Bindshadler, R., Csatho, B., Farrell, S., Fricker, H., Harding, D., Kwok, R., Lefsky, M., Markus, T., Marshak, A., Neumann, T., Palm, S., Schutz, B., Smith, B., Spinhirne, J., and Webb, C.: The ICESat-2 Laser Altimetry Mission, *Proceedings of the IEEE*, 98, 735–751, doi:10.1109/JPROC.2009.2034765, 2010.
- Arya, S. P. S.: Contribution of form drag on pressure ridges to the air stress on Arctic ice, *J. Geophys. Res.*, 78, 7092–7099, doi:10.1029/JC078i030p07092, 1973.
- 10 Brooks, C., Beckley, M., Blair, J. B., and Hofton, M.: IceBridge LVIS POS/AV L1B Corrected Position and Altitude Data, Version 1 [2009–2014], Boulder, Colorado USA: NASA DAAC at the National Snow and Ice Data Center., doi:10.5067/2NWNMDSG5EPJ, 2012, updated 2015.
- Castellani, G., [Lu, P.](#), [Pikes, C.](#), [Lupkes, C.](#), Hendricks, S., and Gerdes, R.: Variability of Arctic [sea-ice-sea ice](#) topography and its impact on the atmospheric surface drag, *J. Geophys. Res. Oceans*, 119, 6743–6762, doi:10.1002/2013JC009712, 2014.
- 15 Chelton, D. B., deSzoeko, R. A., Schlax, M. G., El Naggar, K., and Siwertz, N.: Geographical Variability of the First Baroclinic Rossby Radius of Deformation, *J. Phys. Oceanogr.*, 28, 433–460, doi:10.1175/1520-0485(1998)028<0433:GVOTFB>2.0.CO;2, 1998.
- 20 Dierking, W.: Laser profiling of the ice surface topography during the Winter Weddell Gyre Study 1992, *J. Geophys. Res.*, 100, 4807–4820, doi:10.1029/94JC01938, 1995.
- Doble, M. J., Skourup, H., Wadhams, P., and Geiger, C. A.: The relation between Arctic sea ice surface elevation and draft: A case study using coincident AUV sonar and airborne scanning laser, *J. Geophys. Res.*, 116, C00E03, doi:10.1029/2011JC007076, 2011.
- 25 Dominguez, R.: IceBridge DMS L1B Geolocated and Orthorectified Images, Version 1 [2009–2014], Boulder, Colorado USA: NASA DAAC at the National Snow and Ice Data Center., doi:10.5067/OZ6VNOPMPRJ0, 2010, updated 2015.
- Feltham, D. L.: Sea Ice Rheology, *Annu. Rev. Fluid Mech.*, 40, 91–112, doi:10.1146/annurev.fluid.40.111406.102151, 2008.
- 30 Haas, C.: EM ice thickness measurements during GreenICE 2004 field campaign, *GreenICE Deliverable D11*, 2004.
- Hibler, W. D., Weeks, W. F., and Mock, S. J.: Statistical aspects of [sea-ice-sea ice](#) ridge distributions, *J. Geophys. Res.*, 77, 5954–5970, doi:10.1029/JC077i030p05954, 1972.
- Hibler, W. D., Mock, S. J., and Tucker, W. B.: Classification and variation of sea ice ridging in the western Arctic basin, *J. Geophys. Res.*, 79, 2735–2743, doi:10.1029/JC079i018p02735, 1974.

- Hopkins, M. A.: Four stages of pressure ridging, *J. Geophys. Res.*, 103, 21 883–21 891, doi:10.1029/98JC01257, 1998.
- 5 Hutchings, J. K. and Rigor, I. G.: Role of ice dynamics in anomalous ice conditions in the Beaufort Sea during 2006 and 2007, *J. Geophys. Res.*, 117, C00E04, doi:10.1029/2011JC007182, 2012.
- Krabill, W. B., Abdalati, W., Frederick, E., Manizade, S., Martin, C., Sonntag, J., Swift, R., Thomas, R., and Yungel, J.: Aircraft laser altimetry measurement of elevation changes of the green-land ice sheet: technique and accuracy assessment, *Journal of Geodynamics*, 34, 357–376, doi:10.1016/S0264-3707(02)00040-6, 2002.
- 10 Krabill, W. B.: IceBridge ATM L1B elevation and return strength, Version 2 [2009–2014]., Boulder, Colorado USA: NASA DAAC at the National Snow and Ice Data Center., doi:10.5067/19SIM5TXKPGT, 2013, updated 2015.
- Krabill, W. B.: IceBridge Narrow Swath ATM L1B Elevation and Return Strength, Version 2-2 [2009–2014]., Boulder, Colorado USA: NASA DAAC at the National Snow and Ice Data Center., doi:10.5067/CXEQS8KVIXEI, 2014, updated 2015.
- 15 Kurtz, N., Studinger, M. S., Harbeck, J., Onana, V., and Yi, D.: IceBridge L4 Sea Ice Freeboard, Snow Depth, and Thickness, Version 1., Boulder, Colorado USA: NASA DAAC at the National Snow and Ice Data Center., doi:10.5067/G519SHCKWQV6, 2015.
- 20 Kurtz, N. T., Farrell, S. L., Studinger, M., Galin, N., Harbeck, J. P., Lindsay, R., Onana, V. D., Panzer, B., and Sonntag, J. G.: Sea ice thickness, freeboard, and snow depth products from Operation IceBridge airborne data, *The Cryosphere*, 7, 1035–1056, doi:10.5194/tc-7-1035-2013, 2013.
- Kwok, R.: Sea ice convergence along the Arctic coasts of Greenland and the Canadian Arctic Archipelago: Variability and extremes (1992–2014), *Geophys. Res. Lett.*, 42, 7598–7605, doi:10.1002/2015GL065462, 2015.
- 25 Kwok, R. and Cunningham, G. F.: Variability of Arctic sea ice thickness and volume from CryoSat-2, *Phil. Trans. Roy. Soc., Lond A*, 373, doi:10.1098/rsta.2014.0157, 2015.
- Laxon, S. W., Giles, K. A., Ridout, A. L., Wingham, D. J., Willatt, R., Cullen, R., Kwok, R., Schweiger, A., Zhang, J., Haas, C., Hendricks, S., Krishfield, R., Kurtz, N., Farrell, S., and Davidson, M.: CryoSat-2 estimates of Arctic sea ice thickness and volume, *Geophys. Res. Lett.*, 40, 732–737, doi:10.1002/grl.50193, 2013.
- 30 Lensu, M.: The Evolution of Ridged Ice Fields, Ph.D. thesis, Department of Mechanical Engineering, Helsinki University of Technology, [FinlandHelsinki, Finland, available at https://aaltodoc.aalto.fi/handle/123456789/2097](https://aaltodoc.aalto.fi/handle/123456789/2097), 2003.

- Leonardi, S., Orlandi, P., Smalley, R. J., Djenidi, L., and Antonia, R. A.: Direct numerical simulations of turbulent channel flow with transverse square bars on one wall, *Journal of Fluid Mechanics*, 491, 229–238, doi:10.1017/S0022112003005500, 2003.
- Mahoney, A. R., Eicken, H., Gaylord, A. G., and Gens, R.: Landfast sea ice extent in the Chukchi and Beaufort Seas: The annual cycle and decadal variability, *Cold Regions Science and Technology*, 103, 41–56, doi:10.1016/j.coldregions.2014.03.003, 2014.
- Maneewongvatana, S. and Mount, D. M.: Analysis of approximate nearest neighbor searching with clustered point sets, eprint arXiv:cs/9901013, 1999.
- Martin, C. F., Krabill, W. B., Manizade, S. S., Russell, R. L., Sonntag, J. G., Swift, R. N., and Yungel, J. K.: Airborne topographic mapper calibration procedures and accuracy assessment, Tech. Rep. NASA/TM?2012?215891, pp. 1?–32, NASA, Cent. for AeroSpace Inform., Hanover, Md., 2012.
- Martin, T.: Arctic sea ice dynamics: drift and ridging in numerical models and observations, Ph.D. thesis, Alfred Wegener Institute for Polar and Marine Research, University of Bremen, Bremerhaven, 2007.
- Martin, T., Steele, M., and Zhang, J.: Seasonality and long-term trend of Arctic Ocean surface stress in a model, *J. Geophys. Res. Oceans*, 119, 1723–1738, doi:10.1002/2013JC009425, 2014.
- Maslanik, J., Stroeve, J., Fowler, C., and Emery, W.: Distribution and trends in Arctic sea ice age through spring 2011, *Geophys. Res. Lett.*, 38, L13502, doi:10.1029/2011GL047735, 2011.
- Mock, S. J., Hartwell, A. D., and Hibler, W. D.: Spatial aspects of pressure ridge statistics, *J. Geophys. Res.*, 77, 5945–5953, doi:10.1029/JC077i030p05945, 1972.
- Newman, T., Farrell, S. L., Richter-Menge, J., Connor, L. N., Kurtz, N. T., Elder, B. C., and McAdoo, D.: Assessment of radar-derived snow depth over Arctic sea ice, *J. Geophys. Res. Oceans*, 119, 8578–8602, doi:10.1002/2014JC010284, 2014.
- Onana, V. D. P., Kurtz, N. T., Farrell, S. L., Koenig, L. S., Studinger, M., and Harbeck, J.: ~~A Sea-Ice P:~~ A sea ice Lead Detection Algorithm for Use With High-Resolution Airborne Visible Imagery, *IEEE Transactions on Geoscience and Remote Sensing*, 51, 38–56, doi:10.1109/TGRS.2012.2202666, 2013.
- Perovich, D. K. and Polashenski, C.: Albedo evolution of seasonal Arctic sea ice, *Geophys. Res. Lett.*, 39, L08501, doi:10.1029/2012GL051432, 2012.
- Perovich, D. K., Meier, W., Tschudi, M., Farrell, S. L., Gerland, S., Hendricks, S.: Sea ice [in Arctic Report Card 2015], <http://www.arctic.noaa.gov/reportcard>.
- Polashenski, C., Perovich, D., and Courville, Z.: The mechanisms of sea ice melt pond formation and evolution, *J. Geophys. Res.*, 117, doi:10.1029/2011JC007231, 2012.

- Rabenstein, L., Hendricks, S., Martin, T., Pfaffhuber, A., and Haas, C.: Thickness and surface-properties of different ~~sea-ice~~ ~~sea ice~~ regimes within the Arctic Trans Polar Drift: Data from summers 2001, 2004 and 2007, *J. Geophys. Res.*, 115, C12059, doi:10.1029/2009JC005846, 2010.
- Richter-Menge, J. A. and Farrell, S. L.: Arctic sea ice conditions in spring 2009–2013 prior to melt, *Geophys. Res. Lett.*, 40, 5888–5893, doi:10.1002/2013GL058011, 2013.
- Soille, P. J. and Ansault, M. M.: Automated basin delineation from digital elevation models using mathematical morphology, *Signal Processing*, 20, 171–182, doi:10.1016/0165-1684(90)90127-K, 1990.
- Strub-Klein, L. and Sudom, D.: A comprehensive analysis of the morphology of first-year sea ice ridges, *Cold Regions Science and Technology*, 82, 94–109, doi:10.1016/j.coldregions.2012.05.014, 2012.
- Tan, B., Li, Z., Lu, P., Haas, C., and Nicolaus, M.: Morphology of sea ice pressure ridges in the northwestern Weddell Sea in winter, *J. Geophys. Res.*, 117, C06024, doi:10.1029/2011JC007800, 2012.
- [Tschudi, M., Fowler, C. and Maslanik, J.: EASE-Grid Sea Ice Age, Version 2, Boulder, Colorado USA: NASA National Snow and Ice Data Center Distributed Active Archive Center, doi:10.5067/1UQJWCYPVX61, 2015.](#)
- Thomas, D. N. and Dieckmann, G. S.: *Sea Ice*, 2 ed., Wiley-Blackwell, Hoboken, N. J, 2009.
- Thorndike, A. S., Rothrock, D. A., Maykut, G. A., and Colony, R.: The thickness distribution of sea ice, *J. Geophys. Res.*, 80, 4501–4513, doi:10.1029/JC080i033p04501, 1975.
- Tilling, R. L., Ridout, A., Shepherd, A., and Wingham, D. J.: Increased Arctic sea ice volume after anomalously low melting in 2013, *Nature Geosci.*, 8, 643–646, doi:10.1038/ngeo2489, 2015.
- Timco, G. and Weeks, W.: A review of the engineering properties of sea ice, *Cold Regions Science and Technology*, 60, 107–129, doi:10.1016/j.coldregions.2009.10.003, 2010.
- Tsamados, M., Feltham, D. L., Schroeder, D., Flocco, D., Farrell, S. L., Kurtz, N., Laxon, S. W., and Bacon, S.: Impact of variable atmospheric and oceanic form drag on simulations of Arctic sea ice, *J. Phys. Oceanogr.*, 44, 1329–1353, doi:10.1175/JPO-D-13-0215.1, 2014.
- Tucker, W. B. and Govoni, J. W.: Morphological investigations of first-year sea ice pressure ridge sails, *Cold Regions Science and Technology*, 5, 1–12, doi:10.1016/0165-232X(81)90036-7, 1981.
- Tucker, W. B., Weeks, W. F., and Frank, M.: Sea ice ridging over the Alaskan Continental Shelf, *J. Geophys. Res.*, 84, 4885–4897, doi:10.1029/JC084iC08p04885, 1979.

- Tucker, W. B., Sodhi, D. S., and Govoni, J. W.: Structure of first-year pressure ridge sails in the Prudhoe Bay region, in: *The Alaskan Beaufort Sea*, edited by Reimnitz, P. W. B. M. S., pp. 115–135, Academic Press, doi:10.1016/B978-0-12-079030-2.50012-5, 1984.
- 5 Wadhams, P.: A comparison of sonar and laser profiles along corresponding tracks in the Arctic Ocean, in: *Sea Ice Processes and Models*, edited by Pritchard, R. S., p. 283–299, Univ. of Wash. Press, Seattle, Wash, 1980.
- Wadhams, P.: ~~Sea-ice~~ sea ice Topography of the Arctic Ocean in the Region 70 degrees W to 25 degrees E, *Phil. Trans. Roy. Soc., Lond A*, 302, 45–85, doi:10.1098/rsta.1981.0157, 1981.
- 10 Wadhams, P.: *Ice in the Ocean*, Gordon & Breach Science Publishers, Amsterdam, 2000.
- Wadhams, P. and Davy, T.: On the spacing and draft distributions for pressure ridge keels, *J. Geophys. Res.*, 91, 10 697–10 708, doi:10.1029/JC091iC09p10697, 1986.
- 835 Wadhams, P. and Horne, R. J.: An analysis of ice profiles obtained by submarine sonar in the Beaufort Sea, *J. Glaciol.*, 25, 401–424, 1980.
- Warren, S. G., Rigor, I. G., Untersteiner, N., Radionov, V. F., Bryazgin, N. N., Aleksandrov, Y. I., and Colony, R.: Snow Depth on Arctic Sea Ice, *J. Climate*, 12, 1814–1829, doi:10.1175/1520-0442(1999)012<1814:SDOASI>2.0.CO;2, 1999.
- 840 Williams, G., Maksym, T., Wilkinson, J., Kunz, C., Murphy, C., Kimball, P., and Singh, H.: Thick and deformed Antarctic sea ice mapped with autonomous underwater vehicles, *Nature Geosci*, 8, 61–67, doi:10.1038/ngeo2299, 2015.

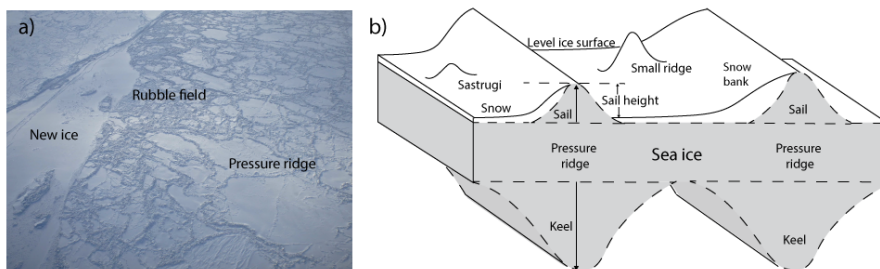


Figure 1. (a) Aerial photograph of the sea ice surface, taken off the coast of Barrow, Alaska. (b) Schematic of a sea ice floe (not to scale) featuring two large pressure ridges, one smaller pressure ridge and a sastrugi (snow feature).

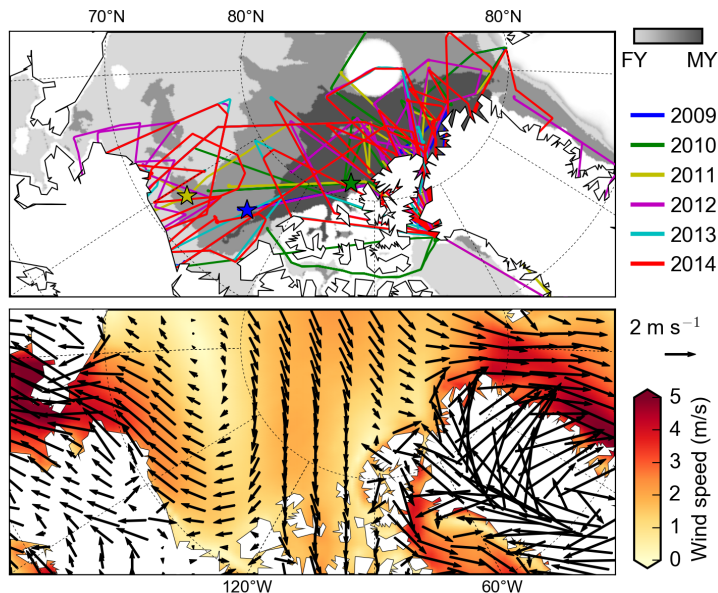


Figure 2. (top) IceBridge sea ice flight lines and estimated ice type over the western Arctic. The dark grey (light grey) background indicates regions where more than 80% of the daily data within all IceBridge sea ice campaign dates (across all years) are estimated as MYI (FYI), while the medium grey indicates a mix of FYI and MYI, taken from the EUMETSAT OSI-SAF ice type mask. The colored stars indicate locations of the various case studies, as highlighted in the relevant figures. (bottom) Mean winds from January-March (2009–2014) taken from the ERA-I reanalyses.

DMS Date: 20110323 DMS Time: 17440152 72.96N, -146.78E

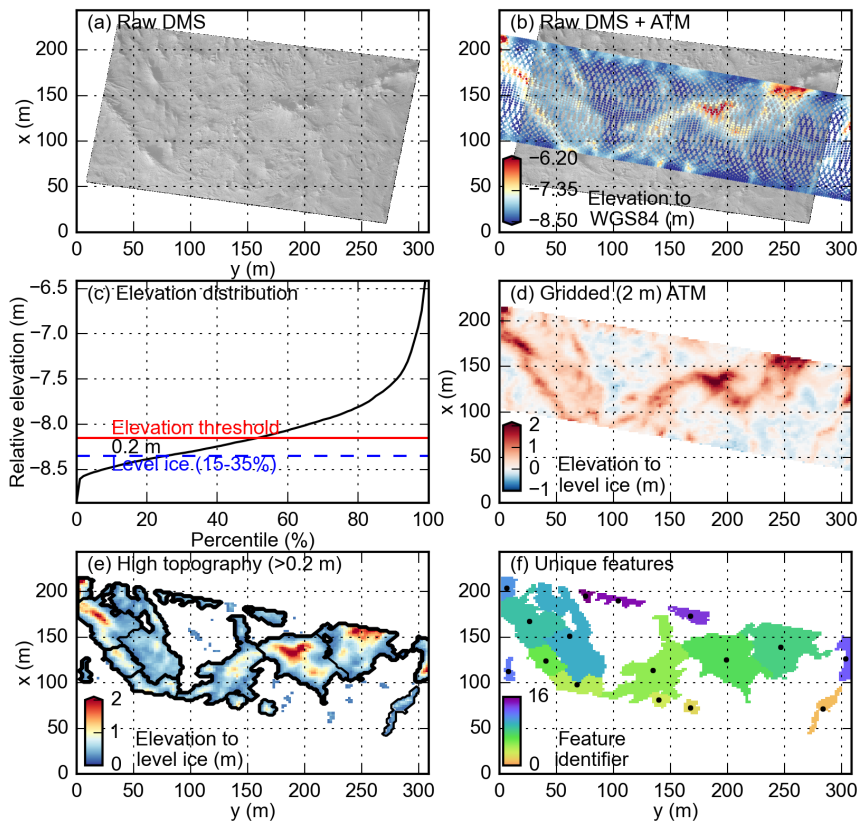


Figure 3. Example of the surface feature detection algorithm overlaid on a DMS image taken on the 23rd March 2011 as highlighted by the yellow star in Figure 2. (a) DMS image; (b) Raw ATM data overlaid on the DMS image; (c) Elevation distribution for all ATM points within the section shown, where the blue line indicates the bounds of the calculated level ice surface and the red line indicates the feature height threshold; (d) Gridded (2 m) ATM elevation relative to the level ice surface; (e) Unique surface features (>20 cm) and their elevation relative to the level ice surface; (f) Unique surface feature identifier (features larger than 100 m^2).

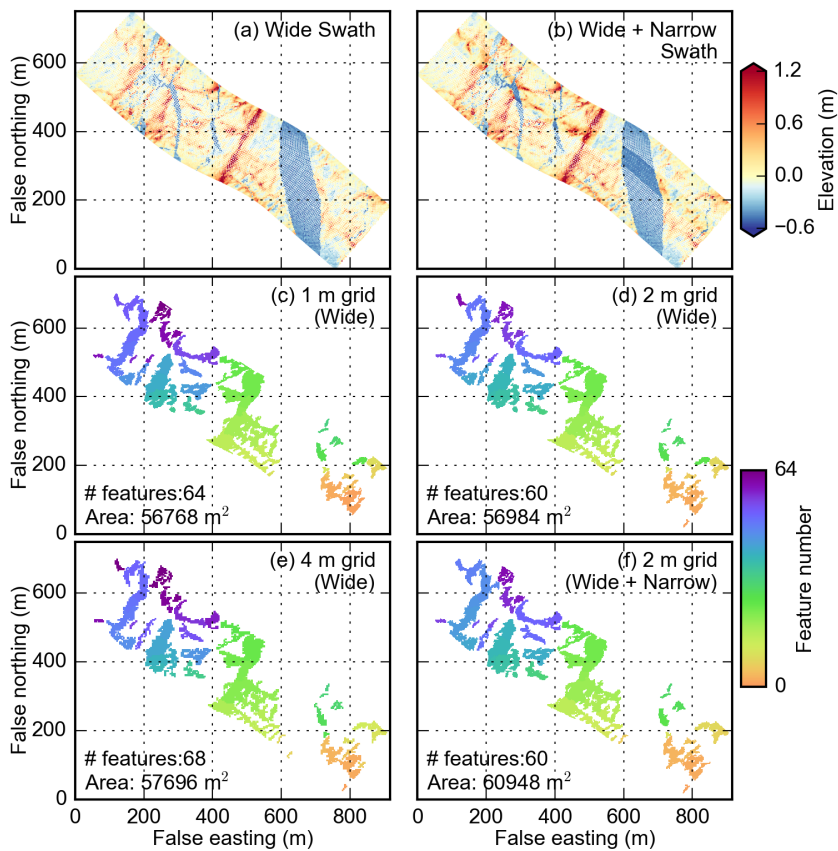


Figure 4. Example feature detection algorithm for a 1 km ATM section in 2011. The top row shows the raw ATM data from both the regular ‘wide scan’ (a) and from the combined ‘wide’ and ‘narrow scan’ (b). (c)–(e) show the features detected using a 1 m (c), 2 m (d) and 4 m (e) gridding of the regular ‘wide scan’ ATM data, while (f) shows the results from the 2 m gridding of the combined ‘wide’ and ‘narrow scan’ ATM data. (c)–(e) also show the number of surface features (>20 cm) detected and the total area of these features.

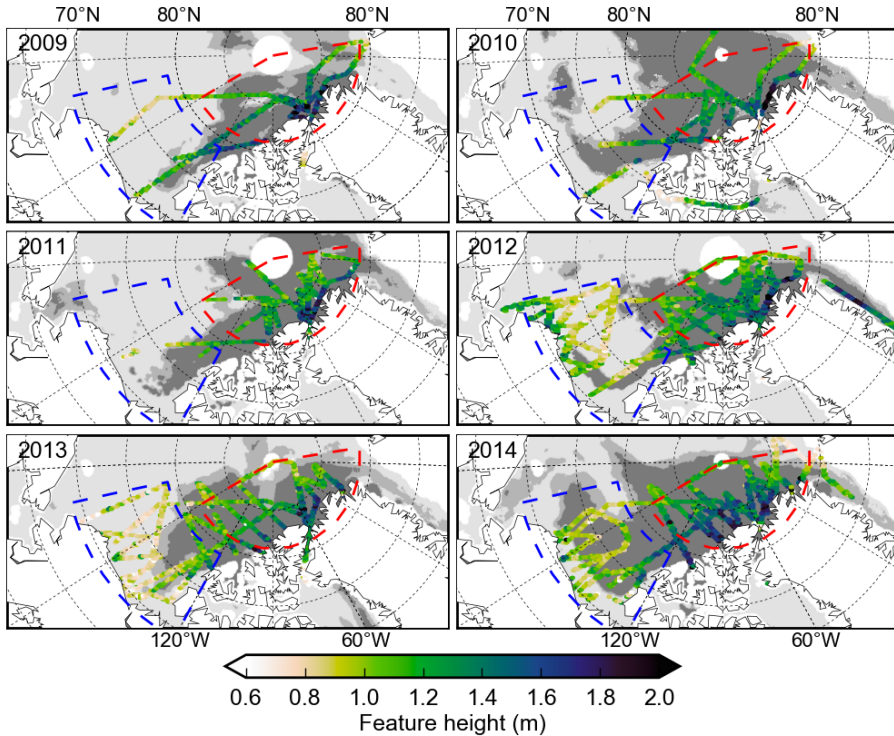


Figure 5. Surface feature height, h_f , from 2009–2014, detected using a 20 cm elevation threshold. The dark grey (light grey) background indicates regions where more than 80% of the daily data within each year’s IceBridge sea ice campaign dates are estimated as MYI (FYI), while the medium grey indicates a mix of FYI and MYI. The red (blue) dashed lines represent the Central Arctic (Beaufort/Chukchi) regions used in this study. The data are plotted using hexagonal bins.

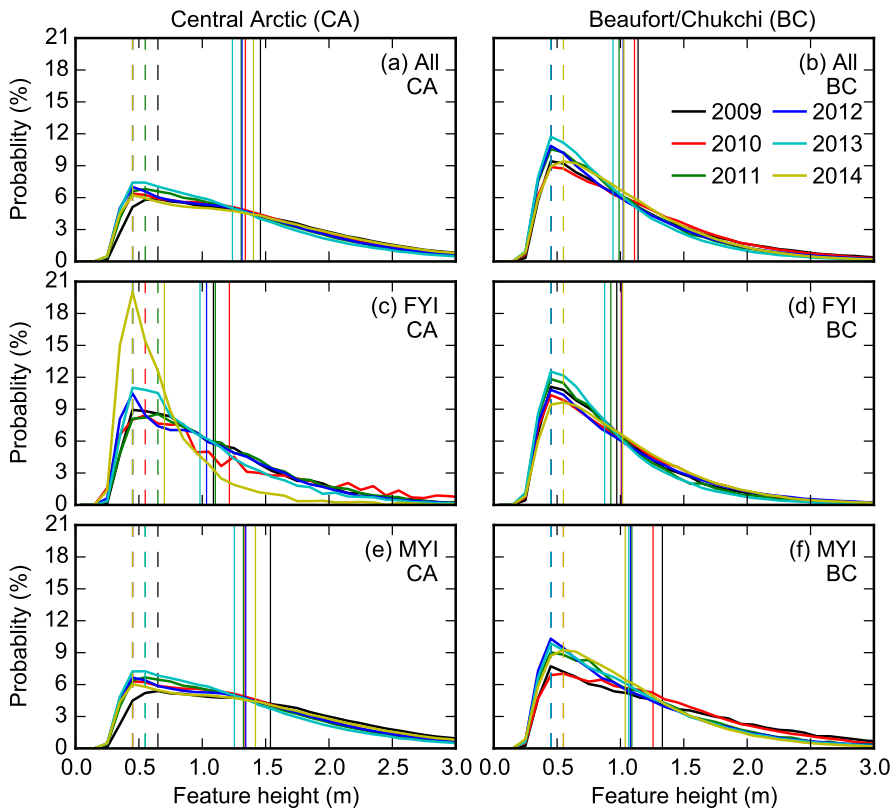


Figure 6. Probability distributions of the surface feature height, h_f (using a 20 cm elevation threshold) detected within the (a) Central Arctic and (b) Beaufort/Chukchi regions (shown in Figure 5) and for the features estimated as FYI (c and d) or MYI (e and f) using the OSI-SAF ice type mask described in Section 3. The bin width is 10 cm and the bin values are plotted as lines (joining each value) instead of steps for clarity. The solid (dashed) vertical lines show the mean (mode) of the distributions across each year. The statistics (mean, mode and standard deviation) are summarised in Table 2.

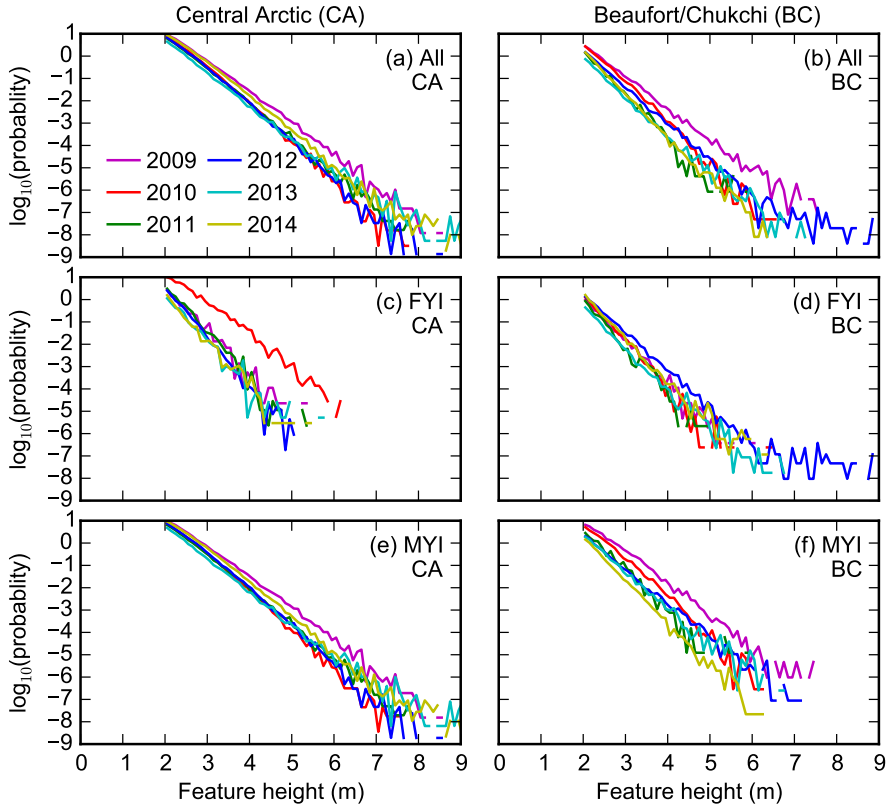


Figure 7. As in Figure 6 but for the surface feature height, h_f , probability distribution plotted on a log (base 10) scale. Only features higher than 2 m are shown to focus on the tail of the probability distributions.

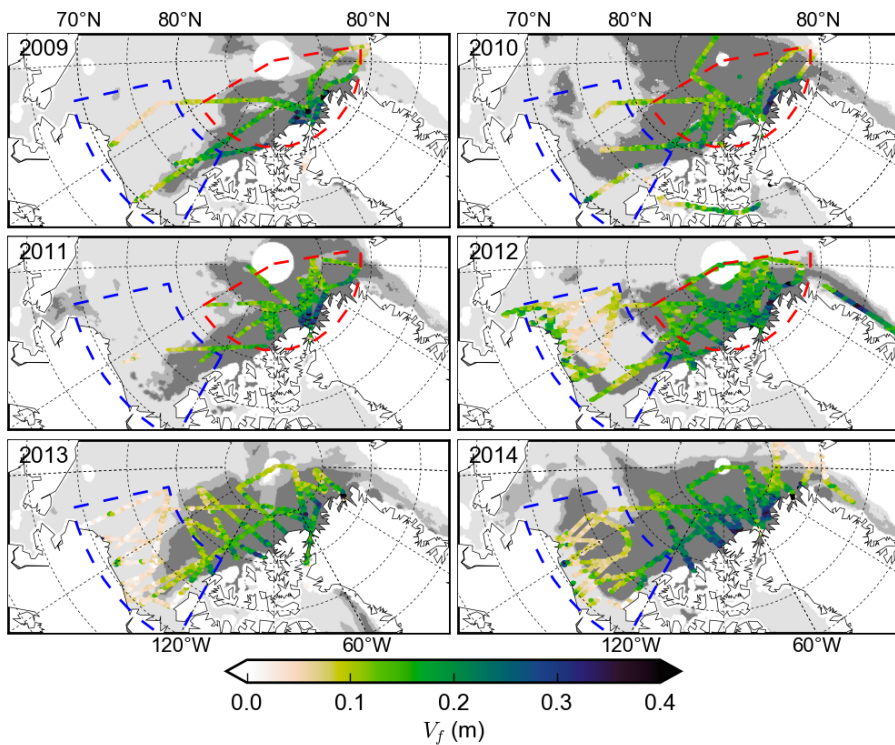


Figure 8. As in Figure 5 but for the surface feature volume (per unit area), V_f .

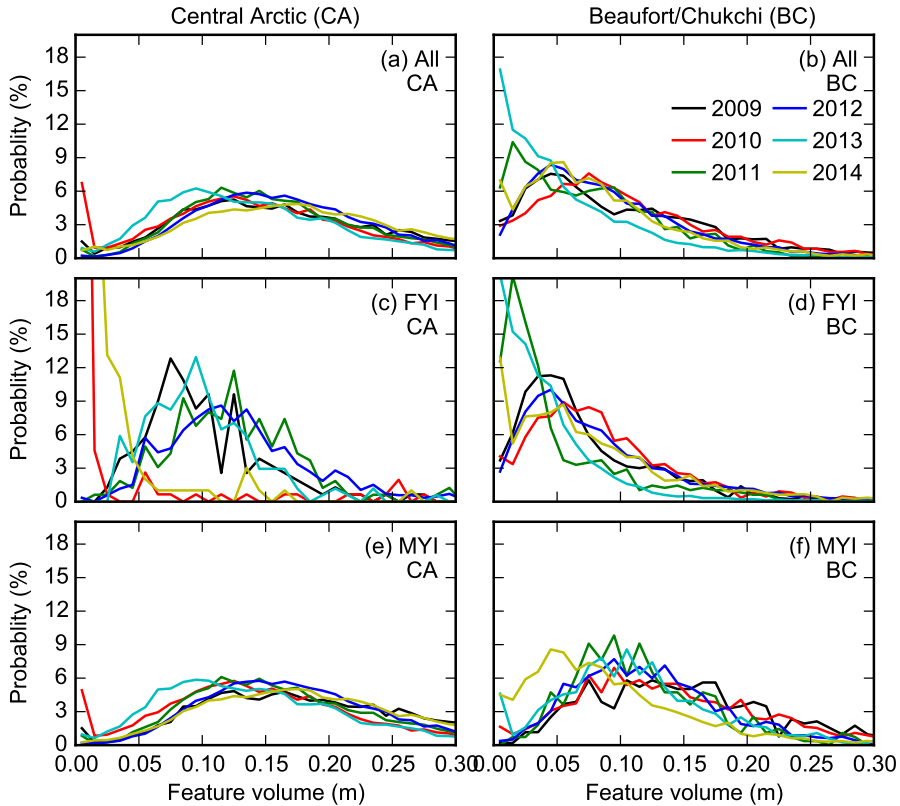


Figure 9. Probability distributions of the surface feature volume (per unit area), V_f , (using a 20 cm elevation threshold) within the (a) Central Arctic and (b) Beaufort/Chukchi regions (shown in Figure 8) from 2009–2014. The bin width is 1 cm. The statistics (mean and mode of each distribution) are summarised in Table 4.

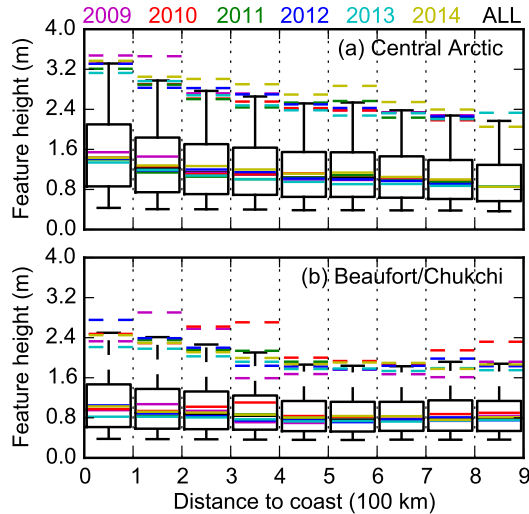


Figure 10. Surface feature height, h_f , as a function of distance to the nearest coastline within the (a) Central Arctic and (b) Beaufort/Chukchi regions (given in Figure 5), presented using box and whisker plots (5, 25, 50, 75, 95 percentiles). The coastline distance bin width is 100 km. The black boxes (and whiskers) show the results from all features detected in each region, while the colors represent the results from each year.

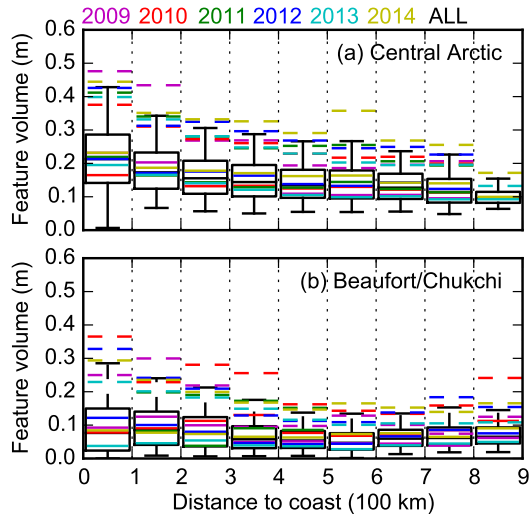


Figure 11. As in Figure 10 but for the surface feature volume (per unit area), V_f .

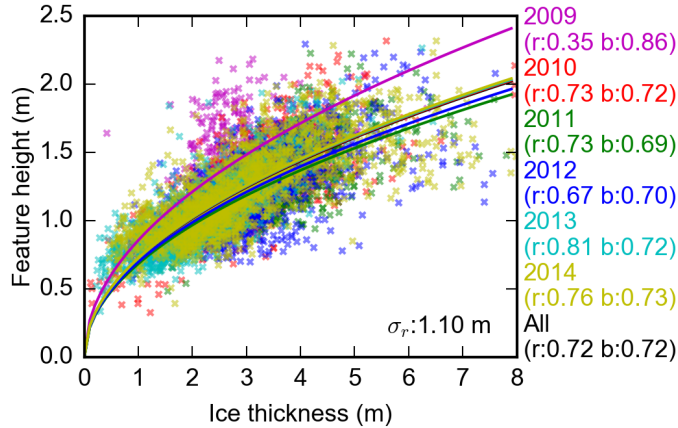


Figure 12. Correlation between the IceBridge sea ice thickness product and the surface feature height h_f , averaged over 10 km along-track sections. The solid lines represent the least-squares fit assuming a square root relationship ($h_f = b\sqrt{H_i}$), where b is the calculated regression coefficient, and r is the correlation coefficient for all years of data. σ_r is the standard error of the residuals (or root mean squared error) calculated using all years of data.

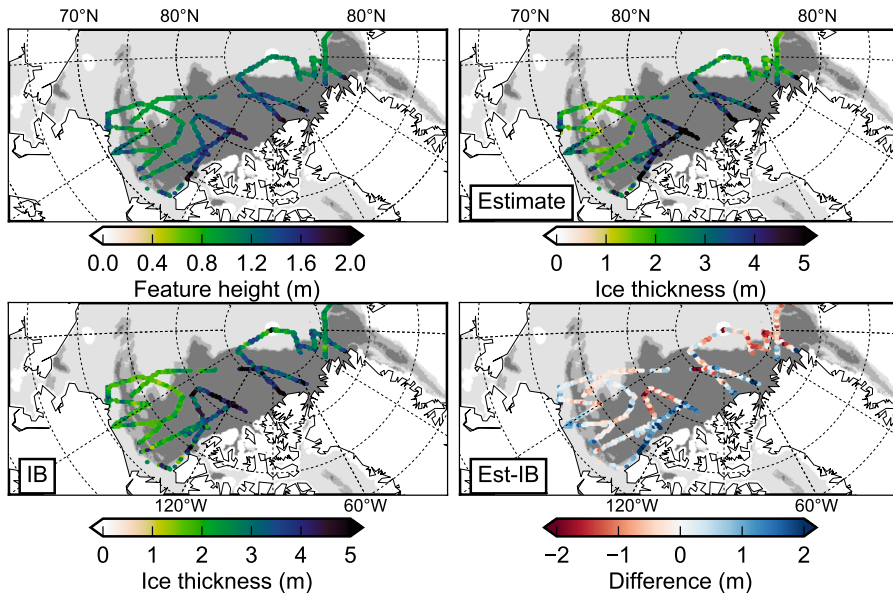


Figure 13. The ~~IceBridge-derived sea ice thickness~~ 2015 surface feature height, h_f , (first-row top left) and the estimated sea ice thickness using the ~~correlations shown relationship~~ $h_f = 0.72\sqrt{H_i}$ given in Figure 12 (second-row) across 2013 (left) and 2014 (top right). The bottom row left panel shows the quick-look IceBridge ice thickness results and the bottom right panel shows the difference between the ice thickness estimated in this study and the derived IceBridge thickness (second-row minus first-row bottom right).

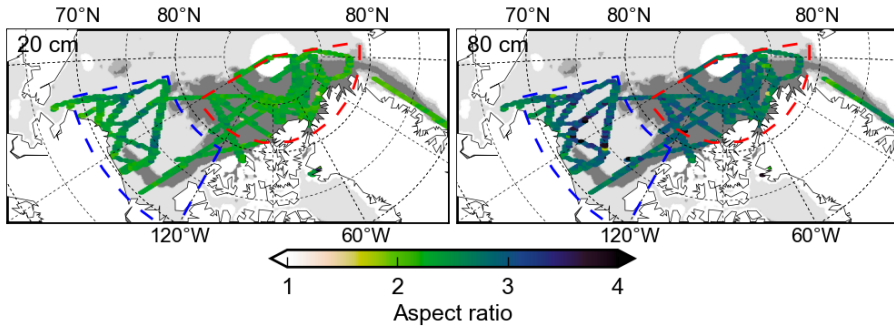


Figure 14. Surface feature aspect ratio, R , detected using a 20 cm elevation threshold (left) and 80 cm threshold (right) in 2012. The dark grey (light grey) background indicates regions where more than 80% of the daily data within each year's IceBridge sea ice campaign dates are estimated as MYI (FYI), while the medium grey indicates a mix of FYI and MYI. The red (blue) dashed lines represent the Central Arctic (Beaufort/Chukchi) regions used in this study.

Table 1. IceBridge ATM flight information. Note that all calculated quantities (rows 3–13) are based on the permissible sea ice sections, as described in Section 3. The ice type classification is also described in more detail in Section 3 (rows 11–13).

Year	2009	2010	2011	2012	2013	2014
<u>Start date (day/month)</u>	<u>31/03</u>	<u>23/03</u>	<u>16/03</u>	<u>14/03</u>	<u>20/03</u>	<u>12/03</u>
<u>End date (day/month)</u>	<u>25/04</u>	<u>21/04</u>	<u>15/04</u>	<u>10/04</u>	<u>25/04</u>	<u>28/04</u>
ATM scan frequency (kHz)	5	5	3	3	3	3
ATM off-nadir scan angle (°)	15	23	15	15	15	15
Mean plane altitude (m)	480	446	464	480	472	476
Mean plane velocity (ms ⁻¹)	127	148	129	125	128	128
Along-track coverage (km)	8,762	14,505	10,080	24,625	18,092	21,028
Total ATM swath area (km ²)	2,216	5,043	2,432	6,284	4,614	5,232
Mean ATM swath width (m)	253	348	241	255	255	249
Mean ATM pts per section	39,000	33,300	23,300	24,400	23,700	23,800
Mean shot spacing (m)	1.44	1.78	1.62	1.83	1.77	1.72
Mean P(99%) shot spacing (m)	3.08	3.84	3.38	3.93	3.78	3.65
Ice type coverage, All (FY/MY, %)	(23/56)	(11/80)	(7/83)	(33/59)	(35/52)	(14/79)
Ice type coverage, BC (FY/MY, %)	(55/22)	(41/42)	(50/28)	(74/18)	(68/18)	(31/61)
Ice type coverage, CA (FY/MY, %)	(4/73)	(2/90)	(2/90)	(7/86)	(3/87)	(1/94)

Table 2. Surface feature height statistics (mean and mode) taken from the probability distributions shown in Figure 6. The value in the brackets (next to the means) equals one standard deviation of the relevant distribution. The third column (under each region) shows the number of surface features detected.

		Central Arctic			Beaufort/Chukchi		
	Year	Mean (m)	Mode (m)	# (10^5)	Mean (m)	Mode (m)	# (10^5)
ALL	2009	1.46 (0.87)	0.65	2.76	1.14 (0.74)	0.45	1.21
	2010	1.34 (0.78)	0.45	4.89	1.11 (0.67)	0.45	1.49
	2011	1.31 (0.78)	0.55	4.74	0.99 (0.58)	0.45	0.43
	2012	1.31 (0.79)	0.45	6.83	1.02 (0.64)	0.45	4.43
	2013	1.24 (0.76)	0.45	3.83	0.94 (0.57)	0.45	3.31
	2014	1.40 (0.85)	0.45	5.97	1.03 (0.58)	0.55	3.27
	All	1.34 (0.81)	0.45	29.02	1.02 (0.63)	0.45	14.16
FYI	2009	1.09 (0.61)	0.45	0.09	0.97 (0.57)	0.45	0.61
	2010	1.21 (0.82)	0.55	0.02	1.01 (0.59)	0.45	0.61
	2011	1.10 (0.60)	0.65	0.09	0.92 (0.54)	0.45	0.16
	2012	1.03 (0.58)	0.45	0.49	1.01 (0.64)	0.45	3.04
	2013	0.98 (0.57)	0.45	0.10	0.88 (0.50)	0.45	1.92
	2014	0.70 (0.39)	0.45	0.03	1.02 (0.58)	0.55	0.95
	All	1.03 (0.59)	0.45	0.80	0.97 (0.59)	0.45	7.29
MYI	2009	1.54 (0.90)	0.65	2.09	1.33 (0.85)	0.45	0.31
	2010	1.34 (0.78)	0.45	4.50	1.26 (0.74)	0.55	0.67
	2011	1.33 (0.79)	0.55	4.38	1.09 (0.65)	0.45	0.16
	2012	1.34 (0.80)	0.45	6.15	1.08 (0.69)	0.45	0.98
	2013	1.25 (0.77)	0.55	3.43	1.07 (0.65)	0.45	0.86
	2014	1.42 (0.85)	0.45	5.76	1.04 (0.59)	0.55	2.06
	All	1.36 (0.82)	0.45	26.32	1.10 (0.67)	0.45	5.04

Table 3. Surface feature height statistics, as in Table 2 but for the processing using an 80 cm threshold, with the results using all features in each region shown (not delineated by ice type).

Year	Central Arctic			Beaufort/Chukchi		
	Mean (m)	Mode (m)	# (10^5)	Mean (m)	Mode (m)	# (10^5)
2009	2.22 (0.81)	1.75	1.11	2.11 (0.75)	1.55	0.28
2010	2.07 (0.71)	1.65	1.83	1.99 (0.65)	1.65	0.35
2011	2.07 (0.73)	1.55	1.69	1.91 (0.60)	1.55	0.07
2012	2.05 (0.72)	1.65	2.55	1.98 (0.69)	1.65	0.84
2013	2.08 (0.76)	1.55	1.13	1.93 (0.65)	1.55	0.44
2014	2.11 (0.76)	1.65	2.55	1.89 (0.59)	1.55	0.58
2015 All	2.09 (0.74)	1.65	10.86	1.96 (0.67)	1.55	2.57

Table 4. Surface feature volume statistics taken from the probability distributions shown in Figure 9. The value in the brackets (next to the means) equals one standard deviation of the relevant distribution. The third column (under each region) shows the number of 1 km ATM sections used in each distribution.

		Central Arctic			Beaufort/Chukchi		
	Year	Mean (m)	Mode (m)	# (10^4)	Mean (m)	Mode (m)	# (10^4)
ALL	2009	0.19 (0.11)	0.12	0.42	0.11 (0.08)	0.04	0.24
	2010	0.15 (0.09)	0.01	0.67	0.11 (0.08)	0.08	0.21
	2011	0.17 (0.09)	0.12	0.78	0.08 (0.06)	0.01	0.10
	2012	0.18 (0.11)	0.14	1.11	0.10 (0.07)	0.04	0.86
	2013	0.15 (0.15)	0.10	0.66	0.06 (0.07)	0.01	0.86
	2014	0.19 (0.13)	0.18	1.01	0.09 (0.07)	0.06	0.72
	All	0.17 (0.12)	0.12	4.64	0.08 (0.07)	0.04	2.98
FYI	2009	0.10 (0.05)	0.08	0.02	0.07 (0.06)	0.04	0.13
	2010	0.02 (0.06)	0.01	0.02	0.09 (0.09)	0.06	0.09
	2011	0.12 (0.05)	0.12	0.02	0.05 (0.06)	0.01	0.05
	2012	0.13 (0.06)	0.12	0.09	0.09 (0.07)	0.04	0.64
	2013	0.10 (0.04)	0.10	0.02	0.04 (0.06)	0.01	0.58
	2014	0.03 (0.04)	0.01	0.01	0.08 (0.08)	0.01	0.22
	All	0.11 (0.07)	0.01	0.16	0.07 (0.07)	0.01	1.71
MYI	2009	0.21 (0.12)	0.12	0.30	0.16 (0.08)	0.08	0.05
	2010	0.15 (0.09)	0.12	0.60	0.14 (0.07)	0.10	0.09
	2011	0.18 (0.09)	0.12	0.71	0.12 (0.05)	0.10	0.03
	2012	0.18 (0.11)	0.15	0.99	0.13 (0.07)	0.10	0.16
	2013	0.15 (0.16)	0.10	0.58	0.11 (0.07)	0.11	0.16
	2014	0.20 (0.13)	0.18	0.96	0.09 (0.07)	0.04	0.44
	All	0.18 (0.12)	0.12	4.15	0.11 (0.07)	0.08	0.93