

# **A Retrospective, Iterative, Geometry-Based (RIGB) tilt correction method for radiation observed by Automatic Weather Stations on snow-covered surfaces: application to Greenland**

Wenshan Wang<sup>1</sup>, Charles S. Zender<sup>1</sup>, Dirk van As<sup>2</sup>, Paul C. J. P. Smeets<sup>3</sup>, and Michiel R. van den Broeke<sup>3</sup>

<sup>1</sup>Department of Earth System Science, University of California, Irvine, California, USA

<sup>2</sup>Geological Survey of Denmark and Greenland (GEUS), Copenhagen, Denmark

<sup>3</sup>Institute for Marine and Atmospheric Research, Utrecht University (UU/IMAU), Utrecht, Netherlands

*Correspondence to:* Wenshan Wang (wenshanw@uci.edu)

**Abstract.** Surface melt and mass loss of the Greenland Ice Sheet may play crucial roles in global climate change due to their positive feedbacks and large fresh water storage. With few other regular meteorological observations available in this extreme environment, measurements from Automatic Weather Stations (AWS) are the primary data source for studying surface energy budgets, and for  
5 validating satellite observations and model simulations. Station tilt, due to irregular surface melt, compaction and glacier dynamics, causes considerable biases in the AWS shortwave radiation measurements. In this study, we identify tilt-induced biases in the climatology of surface shortwave radiative flux and albedo, and retrospectively correct these by iterative application of solar geometric principles. We found, over all the AWS from the Greenland Climate Network (GC-Net),  
10 the Kangerlussuaq transect (K-transect) and the Programme for Monitoring of the Greenland Ice Sheet (PROMICE) networks, insolation on fewer than 40% of clear days peaks within  $\pm 0.5$  hr of solar noon time, with the largest shift exceeding 3 hours due to tilt. Hourly absolute biases in the magnitude of surface insolation can reach up to  $200 \text{ W m}^{-2}$ , with respect to the well-understood clear-day insolation. We estimate the tilt angles and their directions based on the solar geometric  
15 relationship between the simulated insolation at a horizontal surface and the observed insolation by these tilted AWS under clear-sky conditions. Our adjustment reduces the Root-Mean-Square-Error (RMSE) against references from both satellite observation and reanalysis by  $16 \text{ W m}^{-2}$  (24%), and raises the correlation coefficients with them to above 0.95. Averaged over the whole Greenland Ice Sheet in the melt season, the adjustment in insolation to compensate station tilt is  $\sim 11 \text{ W m}^{-2}$ ,  
20 enough to melt 0.24 m of snow water equivalent. The adjusted diurnal cycles of albedo are smoother, with consistent semi-smiling patterns. The seasonal cycles and inter-annual variabilities of albedo agree better with previous studies. This tilt-corrected shortwave radiation dataset derived using the

Retrospective, Iterative, Geometry-Based (RIGB) method provide more accurate observations and validations for surface energy budgets studies on the Greenland Ice Sheet, including albedo variations, surface melt simulations and cloud radiative forcing estimates.

## 1 Introduction

The Greenland Ice Sheet has experienced dramatic mass loss and frequent massive melt events in the past 30 years (Nghiem et al., 2012; Tedesco et al., 2013; Velicogna and Wahr, 2013). At least half of the mass loss can be attributed to surface mass balance (van den Broeke et al., 2009; Enderlin et al., 2014; Andersen et al., 2015), which is in turn controlled by solar radiation (van den Broeke et al., 2011). Therefore, reliable measurements of surface radiative flux are essential for climate change studies in this sensitive area (Pithan and Mauritsen, 2014). In this study, we correct the station tilt problem to produce more consistent shortwave radiation (thereafter, SW) measured by the Automatic Weather Stations (AWS).

In the highly cloudy arctic area (Vavrus et al., 2008), studies of surface energy budgets and mass loss rely on the *in situ* AWS measurements of surface radiative flux, since satellites cannot see through thick clouds, and have a large uncertainty at high solar zenith angles (Wang and Zender, 2010b; Schaaf et al., 2011). Stroeve et al. (2013) evaluated cloud-free albedo retrievals from the MODerate resolution Imaging Spectroradiometer (MODIS) Terra and Aqua combined 16-day albedo product (MCD43) against *in situ* measurements by AWS in Greenland. They found a negative trend in albedo during summer from 2000–2012, with a large negative anomaly in July 2012 (0.060 lower than the average of July 2000–2009: 0.627). Wang and Zender (2010a) adjusted MODIS MCD43 albedo retrievals over snow-covered regions in Greenland to remove the low bias at large solar zenith angles, based on snow optical properties and AWS radiation measurements. The resulting adjustments in absorbed solar radiation are as large as 8.0% and 10.8% for the black-sky and white-sky albedo, respectively. Nevertheless, only AWS observe the all-sky albedo. van den Broeke et al. (2011) calculated the surface energy balance (SEB) and melt rate in the ablation zone of west Greenland using a SEB model driven by hourly AWS measurements. They found that the seasonal cycle and inter-annual variability of melt are mainly controlled by absorption of SW, except in the lower ablation zone where the turbulent fluxes of sensible and latent heat dominate. The AWS measurements are also used in various other applications, such as to estimate cloud radiative effects on surface albedo (Kuipers Munneke et al., 2011), and to validate regional climate model simulations (Fettweis, 2007; Box et al., 2012; van As et al., 2014).

These radiative fluxes measured by unattended stations may contain considerable biases (Stroeve et al., 2001; van den Broeke et al., 2004). In the assessment of AWS in Antarctica, van den Broeke et al. (2004) summarized the typical problems of SW measurements, including icing and riming of the sensor dome, cosine response error at large solar zenith angles, and sensor tilt. Other possible

problems include the shadowing of the station tower or nearby high structures, and random micro-scale environmental noise (Stroeve et al., 2005). An ice coating over the sensor dome can shield part  
60 of the incoming solar radiation, causing an underestimate of net SW. Shadows on the sensor can also  
lead to an underestimate. On the other hand, riming on the sensor dome can increase the incoming  
solar radiation, especially at large solar zenith angles, due to the enhanced multiple scattering of the  
solar radiation, causing an overestimate of net SW. However, in the high and dry interior of ice sheets,  
icing and riming are not major problems due to the small thermal mass of the pyranometers (Stroeve  
65 et al., 2001). Moreover, the unlikely high/low values induced by the icing, riming and shadowing can  
be removed by detecting the sudden change of albedo since the down-looking sensors are generally  
less sensitive to these problems. The cosine response error at large solar zenith angles is intrinsic, and  
variable with instrument types and manufacturers, some of which we characterize in the following.  
Using an intermediate resolution spectrophotometer, Grenfell et al. (1994) found the departures of  
70 measurements from an ideal cosine law were less than 15% at solar zenith angles less than 72°. Using a Brewer spectroradiometer in UV band, Bais et al. (1998) reported a cosine error range from  
2% to 7%. One of the AWS projects in Greenland, Greenland Climate Network, employs LI-COR  
200SZ pyranometers. Stroeve et al. (2001) observed deviations of this pyranometer from highly  
accurate instruments in excess of 5% at solar zenith angles larger than 75°. van den Broeke et al.  
75 (2004) obtained negative net shortwave radiation at high solar zenith angles using Kipp & Zonen  
CM3 pyranometers, equipped by the other two Greenland AWS projects, K-transect project and  
the Programme for Monitoring of the Greenland Ice Sheet networks. According to the manufacture  
report, the typical percentage deviation of Kipp & Zonen CM3 from ideal cosine behavior is ~ 2%  
at solar zenith angle of 80°, with a maximum of ~ 8%, which is on the same magnitude of that of LI-  
80 COR 200SZ (Kipp & Zonen, 2004). The newer version of LI-COR pyranometer, LI-200R, claims a  
typical cosine error of less than 5% up to solar zenith angle of 82° (Biggs, 2015). None of the cosine  
errors reported in the above proceedings exceed the mean tilt-induced biases as we document below.

The primary source of the bias in the SW is the instrument leveling (i.e., sensor tilt) (van den Broeke  
et al., 2004; van As, 2011; Stroeve et al., 2013). Different snow melt and compaction as well as  
85 glacier movement (Andreas Peter Ahlstrøm, 2015: personal communication) around the station tow-  
ers and/or cable anchors can cause the station to drift over time. The tilted sensors will result in  
either underestimates or overestimates of radiation measurements, depending on the combination  
of the tilt angle and tilt direction. SW is highly sensitive to sensor tilt. Theoretically, a tilt angle of  
1° towards 40°N will induce a ~ 20 W m<sup>-2</sup> bias in net SW (van den Broeke et al., 2004). Using  
90 a radiative transfer model, Bogren et al. (2015) estimated the albedo error introduced by a station  
tilt of 5° to be ~ 13%. Moreover, the diurnal phase of radiation will be shifted, suggesting that sub-  
daily variabilities will be inaccurate without correcting the tilt problem. Both van den Broeke et al.  
(2004) and Stroeve et al. (2013) used a 24-hour running average as a workaround. van den Broeke  
et al. (2004) further calculated net SW by multiplying the 24-hour running average albedo with the

95 upwelling radiation, which is less susceptible to station tilt. These workarounds provide more stable estimates of radiation and albedo. However, the only way to obtain the accurate radiation and albedo at any time scales is to correct the tilt problem. The PROMICE AWS are equipped with inclinometers, measuring the north-south and east-west tilt angles. The station rotation is obtained every 1-2 years by re-visiting the station. Insolation observed by tilted AWS can then be adjusted using this information (van As, 2011). However, in spite of the effort to re-position the stations during each visit, the frequent station rotation, occurring together with station tilt, changes the orientation of these inclinometers, making the measured tilt angles questionable. Moreover, the tilt problem remains at half of the AWS in Greenland with no inclinometers at all.

For longwave radiation, the most important bias source is the window heating offset (van den Broeke et al., 2004), which occurs when the silicon window is warmer than the sensor housing, caused by an excess of solar radiation absorption. Although this problem cannot be removed without knowing the window temperature, the overall effect on net longwave radiation is less than  $5 \text{ W m}^{-2}$  (van den Broeke et al., 2004), which is quite small relative to the shortwave bias caused by tilt discussed here.

110 To ameliorate tilt biases in SW measured by AWS, we introduce a new method—the Retrospective, Iterative, Geometry-Based (RIGB) tilt correction method—that depends only on solar geometry, and no additional instrumentation. Section 2 and 3 describe the datasets we use, and RIGB method to estimate tilt angle-direction and to adjust SW. In Section 4, we evaluate our adjusted insolation against satellite observations and reanalysis at all stations, and against data from PROMICE stations, which were adjusted by the inclinometer-measured tilt angles. To what degree station tilt affects the diurnal phase and magnitude of insolation are also revealed in this section. In Section 5, we present the observed diurnal variability of albedo over Greenland for the first time, and show the improvement of the monthly and annual climatology using the adjusted SW. In Section 6, we explore the dominant factors for station tilt, and discuss the possible limitations and uncertainties of RIGB method, followed by our conclusions.

## 2 Data

AWS used in this study are from three networks: Greenland Climate Network (GC-Net), the Kangerlussuaq transect (K-transect) and the Programme for Monitoring of the Greenland Ice Sheet (PROMICE). The first GC-Net station was set up in 1995. By 2014, there were a total of 17 long-term AWS in GC-Net, spreading in both ablation and accumulation zones (Steffen et al., 1996). Three AWS at the K-transect were initiated in 2003 (van den Broeke et al., 2011), with one more station added in 2010. Since 2007, PROMICE set up 22 AWS in succession, arranged mostly in pairs with one station in the upper ablation zone near the equilibrium line and the other at a lower elevation well into the ablation zone (van As and Fausto, 2011).

130 In this study, we correct the sensor tilt problem in surface SW data observed by AWS from all three aforementioned datasets during melt seasons (i.e., May–Aug) from 2008 to 2013, when data at most of the stations are available. Stations with more than two years of missing data are excluded from consideration, including Crawford Point1, GITS, NASA-U and Petermann Gl. from GC-Net, s6 from K-transect, and MIT, QAS\_A and TAS\_A from PROMICE. The remaining number of stations  
135 is 35, of which 13 stations are from GC-Net, 3 from K-transect and 19 from PROMICE (Fig. 1). The radiative flux from these datasets is hourly average. We synchronize all three datasets to account the fact that the time stamp of GC-Net and K-transect is half an hour after the interval mid-point (i.e., data stamped as 8 am represent the average from 7 to 8 am); the one of PROMICE is half an hour before the interval mid-point (i.e., data stamped as 8 am represent the average from 8 to 9  
140 am). PROMICE also provides adjusted SW by measured tilt angles at their stations, which can be used as a reference for our method. However, this PROMICE product has not been corrected for the inclinometer orientation shift yet.

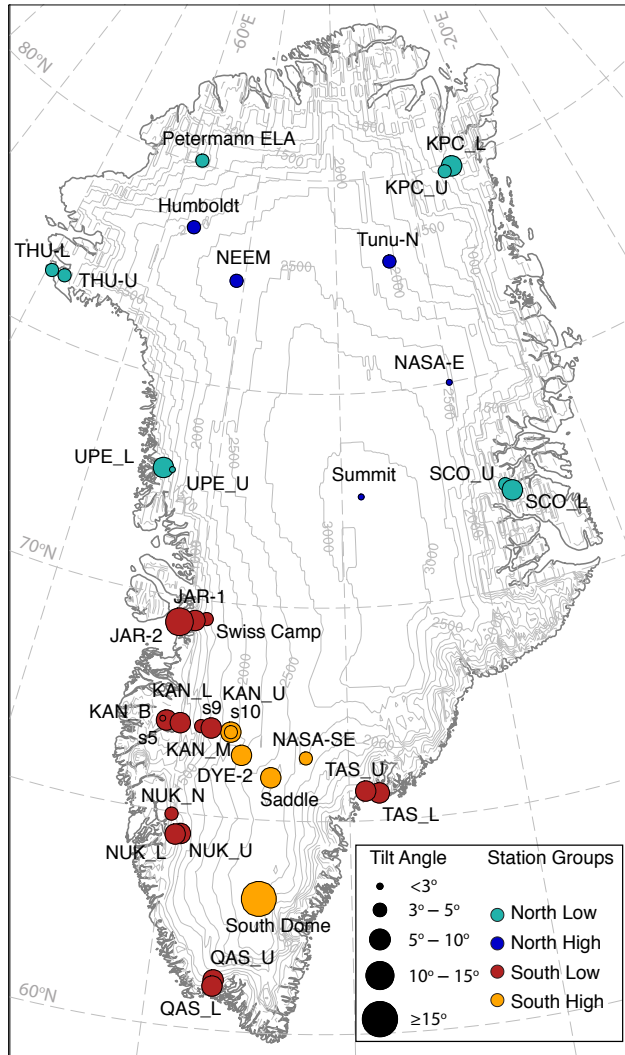
We also use insolation from the Clouds and the Earth’s Radiant Energy System (CERES) (CERES Science Team) and the Modern-Era Retrospective Analysis for Research and Applications (MERRA)  
145 (Rienecker et al., 2011) as references to evaluate RIGB adjustments. CERES instruments are now aboard three satellites, including Terra, Aqua and the Suomi National Polar-orbiting Partnership (SNPP) observatory. They measure both solar-reflected and Earth-emitted radiation from TOA, and derives solar radiative fluxes at Earth surface. The insolation we use is Synoptic Radiative Fluxes and Clouds (SYN) Edition-3A Level-3 data, the spatial and temporal resolution of which are 1 °and  
150 3 h, respectively. MERRA is the new generation of reanalysis, which uses the Data Assimilation System component of the Goddard Earth Observing System. It provides near-real-time hourly climate analysis with 1/2° in latitude and 2/3° in longitude.

### 3 Methodology

Based on the geometric relationship between the tilted insolation observations and simulations on a  
155 horizontal surface on clear days, we deduce tilt angles and directions, and then use them to correct the tilt-induced biases on the neighboring cloudy days.

#### 3.1 Surface Radiative Flux Simulation

We use a Column Radiation Model (CRM), the stand-alone version of the radiation model in Community Atmosphere Model 3 (CAM3) updated from Zender (1999), to simulate surface radiative  
160 flux on clear days based on atmospheric profiles and surface conditions. Here we use atmospheric temperature profiles and humidity profiles, and surface conditions (except surface albedo) from the Atmospheric Infrared Sounder (AIRS) (AIRS Science Team/Joao Teixeira, 2013). Its Infrared and Micro-Wave (IR/MW) sounding instruments retrieve reliable profiles even near the surface (Susskind



**Figure 1.** The Automatic Weather Stations used in this study and their average tilt angles ( $\beta$ ). Stations are separated into four groups based on their latitudes and altitudes

et al., 2003). Atmospheric constituents with little variability, such as  $O_3$  and Aerosol Optical Depth are set to values from a sub-Arctic standard atmosphere (Table 1).

### 3.2 Radiation on a tilted surface

SW on a tilted surface comprises of three parts: direct radiation or beam radiation ( $I_{b,t}$ ), diffuse radiation ( $I_{d,t}$ ) and reflected radiation from a nearby horizontal surface ( $I_{r,t}$ ). These three parts can be calculated separately from tilt angle ( $\beta$ ) and tilt direction ( $a_w$ ), time and place, and SW on the horizontal surface ( $I_h$ ), assuming isotropic reflection at the surface (Goswami et al., 2000). First, the direct radiation ( $I_{b,t}$ ) is calculated from the direct part of SW on the horizontal surface ( $I_{b,h}$ ) and the

**Table 1.** CRM Parameters.

Parameter	Unit	Value
Number of vertical levels	layer	100
Ozone column mass path	DU	348.64
Aerosol visible extinction optical depth in North		0.12
Aerosol visible extinction optical depth in South		0.14
Solar constant	W/m <sup>2</sup>	1367.0

solar zenith angle observed on the tilted surface ( $i$ ), as below:

$$I_{b,t} = I_{b,h} \cdot \cos i \quad (1)$$

$I_{b,h}$  is known from the true solar zenith angle ( $z$ ) and the diffuse ratio (C):

$$175 \quad I_{b,h} = \frac{I_h}{\cos z + C} \quad (2)$$

$\cos i$  follows the geometric relationship with the true solar zenith angle ( $z$ ), solar azimuth angle ( $a_s$ ), tilt angle ( $\beta$ ) and tilt direction ( $a_w$ ):

$$\cos i = \sin z \cdot \cos(a_s - a_w) \cdot \sin \beta + \cos z \cdot \cos \beta \quad (3)$$

We calculate solar declination used to estimate solar zenith angle ( $z$ ) and azimuth angle ( $a_s$ ) using  
180 algorithm from Reda and Andreas (2004).

The diffuse radiation on a tilted surface ( $I_{d,t}$ ) can be calculated by multiplying diffuse radiation on a horizontal surface ( $C \cdot I_{b,h}$ ) by the view factor between the sky and the tilted surface, as below (assuming isotropic diffuse radiation):

$$I_{d,t} = C \cdot I_{b,h} \cdot (1 + \cos \beta)/2 \quad (4)$$

185 Part of the upwelling radiation from a nearby horizontal surface can be intercepted by the tilted surface. This reflected radiation on the tilted surface ( $I_{r,t}$ ) can be obtained by multiplying upwelling radiation from the horizontal surface ( $\rho \cdot I_h$ ) by the view factor between the horizontal surface and the tilted surface (assuming isotropic reflected radiation):

$$I_{r,t} = \rho \cdot I_h \cdot (1 - \cos \beta)/2 \quad (5)$$

190 Where  $\rho$  is an approximation of surface albedo. A value of 0.8 is used here for snow covered ground as suggested by Goswami et al. (2000).

The relation between SW measured by the tilted sensor ( $I_t$ ) and SW on the horizontal surface simulated by CRM ( $I_h$ ) can be summarized as:

$$I_t = \frac{I_h}{\cos z + C} \cdot [\cos i + C \cdot (1 + \cos \beta)/2 + \rho \cdot (\cos z + C)(1 - \cos \beta)/2] \quad (6)$$

195 where C is 0.25 for insolation on clear days. The relatively larger value of C used here includes the effects of undetected clouds (Harrison et al., 2008).

### 3.3 Estimate of Tilt Angle and Direction

The SW provided by the three datasets used in this study could include all the AWS measuring problems of icing, riming, shadowing, cosine response error and sensor tilt. AWS from GC-Net use the LI-COR 200SZ pyranometer, which has a better resistance to rime formation than the standard thermopile pyranometers (Stroeve et al., 2005), due to its small thermal mass. van den Broeke et al. (2004) found the Kipp & Zonen CM3 pyranometer, used by AWS from K-transect and PROMICE, less susceptible to riming, since it only has a single dome (rather than double domes), which can be heated up by solar radiation together with the black sensor plate to prevent rime formation. Furthermore, using only clear days with perfect cosine curves to estimate tilt angle-direction helps remove the effects of icing, riming and shadowing. Although the numerical solutions of tilt angle-direction are most sensitive to insolation at solar noon, in order to further limit effect of cosine response error, we only use data at solar zenith angles smaller than  $75^\circ$ , when the cosine response error is typically less than 5% (Kipp & Zonen, 2004; Biggs, 2015; Stroeve et al., 2001). We assume, therefore, the residual bias is mainly caused by sensor tilt, with an uncertainty in device measurement and random environmental noise. The best tilt angle-direction pair,  $(\beta, a_w)$ , is chosen as the pair which produces the surface insolation with the correct shift in phase ( $\pm 0.5$  hours) and the smallest absolute error in magnitude compared with CRM simulations.

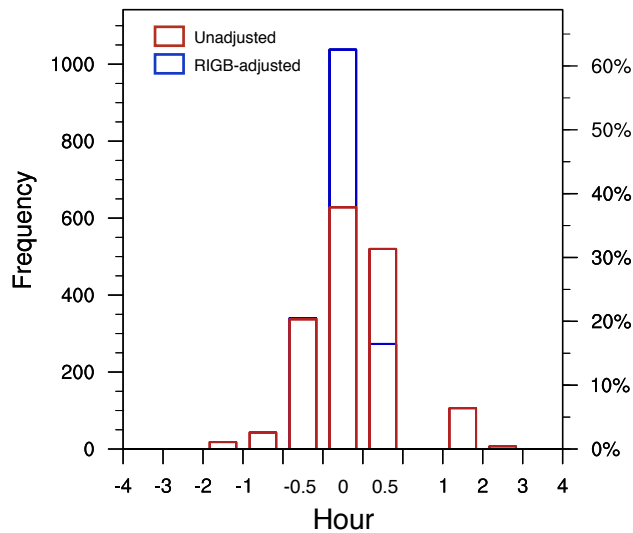
### 3.4 Data Adjustment

The best tilt angle-direction pair estimated using insolation on all the clear days in one month is used to adjust radiation of that whole month. However, there are cases in which tilt angle changes several degrees in a month. If the standard deviation of RIGB adjustments on different clear days using this one pair of tilt angle-direction is larger than  $5 \text{ W m}^{-2}$ , this month will be divided into shorter time periods and processed separately. To adjust insolation on both clear and cloudy days (i.e., calculate radiation on the horizontal surface  $I_h$  from that on the tilted surface  $I_t$ ), Eq. 6 shown previously is used with the diffuse ratio (C) calculated by the cloud fraction (CF) from CERES (van As, 2011).

$$C = \frac{0.25 + \text{CF}}{1 - \text{CF}} \quad (7)$$

Since the improvements in the shortwave upwelling radiation are negligible for the tilt angle range estimated in this study, no tilt correction is performed on it. Although only insolation at solar zenith angles less than  $75^\circ$  is used to estimate station tilt, SW data at all solar zenith angles are adjusted, with physically impossible (i.e., insolation at surface larger than at TOA; or albedo larger than 0.99) and suspicious data (i.e., a sudden change in albedo) excluded. Missing data points with both adjoining sides of data available are filled with linear interpolation.





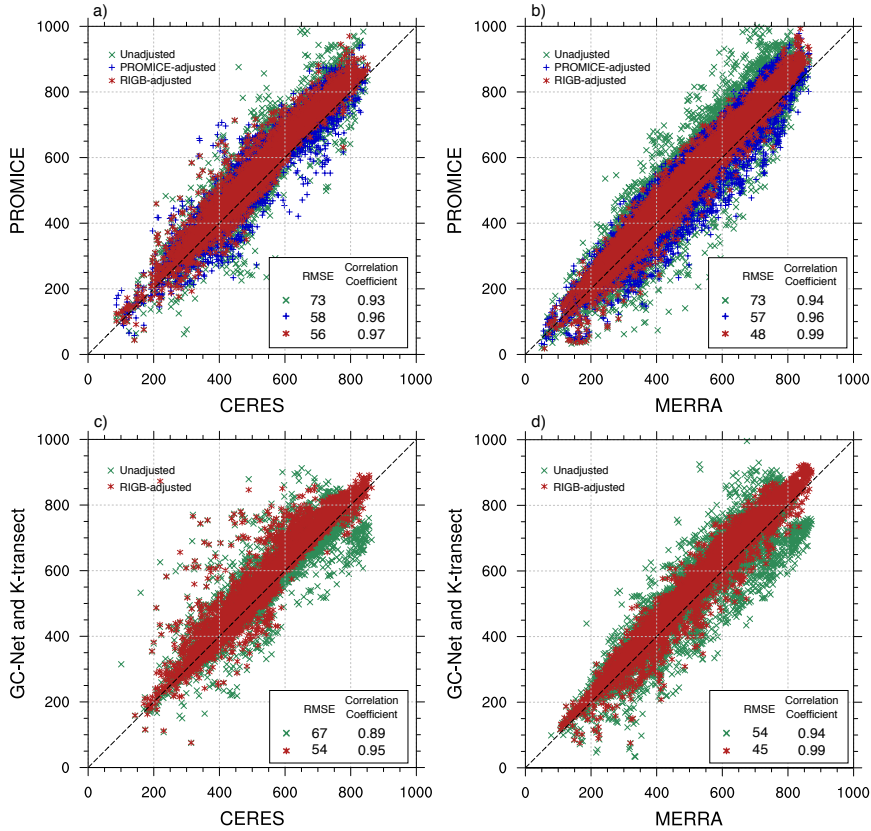
**Figure 2.** Shifts of maximum insolation time to solar noon in unadjusted data and RIGB adjustment. The bins of solar noon time are non-linear with a minimum of 0.5 hr.

#### 4 Validation

230 Station tilt affects both the phase and magnitude of the diurnal variability of surface radiative flux. The phase shift can be discerned by comparing the time of observed insolation maximum with solar noon time under clear-sky conditions. The solar noon time at one station is known from its longitude and the date (Goswami et al., 2000; Reda and Andreas, 2004). There is a frequent shift of maximum insolation time against solar noon in the unadjusted AWS measurements at most stations (Fig. 2).  
 235 On fewer than 40% of all clear days, insolation peaks within  $\pm 0.5$  hours of solar noon. Some of the shifts are larger than 3 hours. On the other hand, over 60% of the RIGB-adjusted insolation peaks at solar noon. The maximum shift is  $\pm 0.5$  hours.

The improvements in AWS insolation are further evaluated by comparing unadjusted AWS data with RIGB-adjusted data and with the PROMICE adjustment against the CERES (CERES Science  
 240 Team) and MERRA retrievals (Rienecker et al., 2011). The AWS from PROMICE are equipped with inclinometers that record the station tilt angles. The tilt-corrected data are provided whenever inclinometers worked, with no correction on the inclinometer orientation yet. We compare AWS observations with data in the nearest CERES and MERRA grid. Comparisons are only conducted between 6 A.M. and 6 P.M. at local solar time, since the extrapolation of data in the early mornings  
 245 and late nights—when most of the data are removed due to icing and low sensitivity problems—is problematic.

RIGB adjustment better agrees with both CERES and MERRA, relative to the unadjusted data and PROMICE adjustment (Fig. 3). At PROMICE stations, the RIGB Root-Mean-Square-Errors (RMSE) against CERES and MERRA are  $\sim 20 \text{ W m}^{-2}$  smaller than the RMSE of the unadjusted



**Figure 3.** Correlation of insolation ( $\text{W m}^{-2}$ ) on clear days between a) PROMICE with CERES; b) PROMICE with MERRA; c) GC-Net and K-transect with CERES; d) GC-Net and K-transect with MERRA.

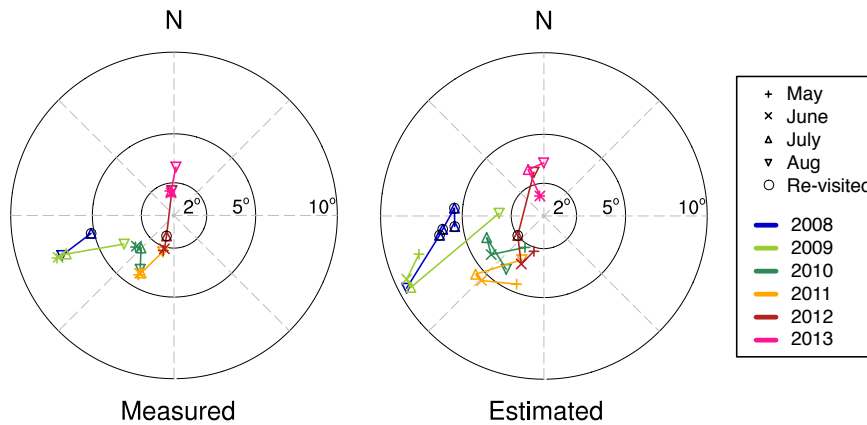
250 data, and are also smaller than the RMSE of the PROMICE adjustment (Fig. 3a and b). Correlations of RIGB with CERES and MERRA are the strongest. Their correlation coefficients exceed 0.97 for both references, in contrast with the low values of the unadjusted data, which are 0.93 for CERES and 0.94 for MERRA. The ones of PROMICE adjustment are in-between: 0.96 for both reference datasets. The RIGB-adjusted insolation also better agrees with the references at GC-net and K-transect stations, with  $\sim 10 \text{ W m}^{-2}$  less RMSE relative to the unadjusted data, and correlation coefficients over 0.95 (Fig. 3c and d). Under all-sky conditions, the improvements in RMSE are over  $20 \text{ W m}^{-2}$  for both CERES and MERRA, although the absolute biases are larger (Table 2). We also notice a systematic difference of almost  $50 \text{ W m}^{-2}$  between CERES and MERRA. These large bias and systematic difference could be caused by the inaccurate estimates of cloud properties by the satellite instrument (i.e., CERES) and reanalysis (i.e., MERRA). Nevertheless, RIGB adjustment shows better consistencies with both references, because our adjustment is on the daily time-scale, which is shorter than that of this systematic difference.

260

**Table 2.** RMSE of AWS against the reference datasets under all-sky conditions ( $\text{W m}^{-2}$ ).

AWS	Reference	Unadjusted	PROMICE	RIGB
			Adjustment	Adjustment
PROMICE	CERES	146	115 (-21%)	101 (-31%)
	MERRA	184	152 (-17%)	150 (-18%)
GC-Net &	CERES	99		77 (-22%)
K-transect	MERRA	154		101 (-34%)

Numbers in the parentheses are the percentage of changes relative to the unadjusted data.



**Figure 4.** Measured and estimated tilt angle-direction at Station KPC\_U. The distance from the circle center represents the station tilt angle ( $\beta$ ). The direction represents the station tilt direction ( $\alpha_w$ ) with  $0^\circ$  pointing to the South. The markers are circled in black if the station was re-visited in those months.

To illustrate the agreement between the PROMICE measured and RIGB estimated tilt angles, we next compare these angles at Station KPC\_U, where the station rotation is small according to the field notes taken on revisits. The hourly north-south and east-west tilt angles measured by inclinometers are converted to tilt angle-direction format, assuming no station rotation, and then averaged over a month. The measured and estimated tilt angle-direction agree reasonably well (Fig. 4). The year-to-year relative positions are the same. The maximum absolute differences in the tilt angle and direction are  $2.24^\circ$  and  $33.35^\circ$ , with a Root-Mean-Square-Difference (RMSD) of  $1.09^\circ$  and  $14.19^\circ$ , respectively. The resulting RMSD in insolation adjustment is  $6 \text{ W m}^{-2}$ .

The largest improvement of our tilt correction (i.e., RIGB adjustment minus unadjusted data) occurs at South Dome, with a daily average of  $32 \text{ W m}^{-2}$  under all-sky conditions and  $84 \text{ W m}^{-2}$  under clear-sky conditions. Although the tilt angles are more variable in the ablation zone (i.e., altitude  $< 2000 \text{ m}$ ), the absolute values are larger in the accumulation zone (i.e., altitude  $> 2000 \text{ m}$ ), caused by the large systematic tilt at each of the southern stations. Therefore, our method improves

**Table 3.** Daily average improvements in insolation.

Zone	Condition	Unadjusted (W m <sup>-2</sup> )	RIGB adjustment (W m <sup>-2</sup> )	Absolute Difference*	
Accumulation	All-Sky	295	350	13	(4%)
	Clear-Sky	326	395	51	(16%)
Ablation	All-Sky	284	322	10	(4%)
	Clear-Sky	346	428	44	(13%)

Numbers in the parentheses are the percentages of the absolute differences relative to the unadjusted insolation;

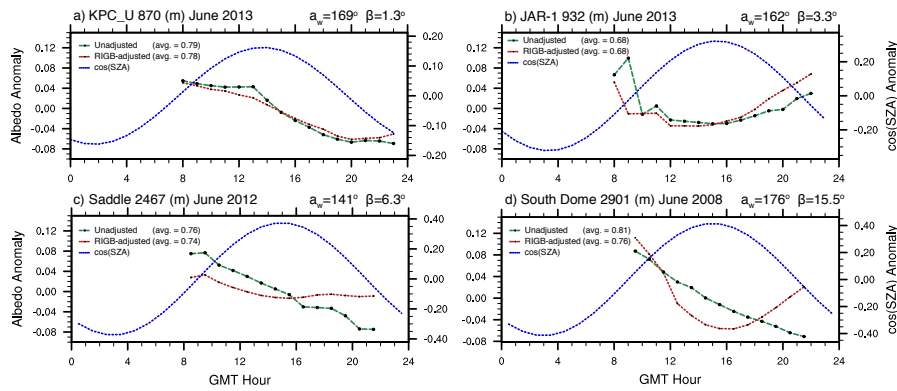
\* Hourly Average of absolute difference between unadjusted data and RIGB adjustment, not the difference between Column 3 and 4.

the insolation more in the accumulation zone (13 W m<sup>-2</sup>) than in the ablation zone (10 W m<sup>-2</sup>; Table 3). The average daily improvement of all stations under all-sky conditions is  $\sim 11$  W m<sup>-2</sup>, which is equivalent to a snow melt in liquid of 0.24 m throughout the melt season, using an albedo of 0.7 for melting snow.

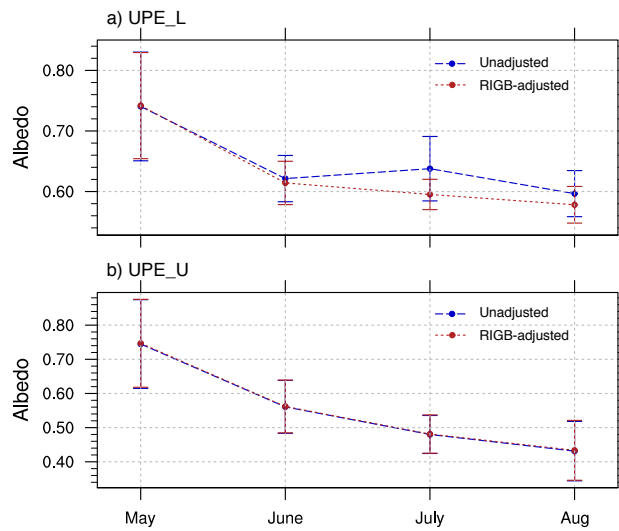
## 280 5 Impact on Snow Surface Albedo

Snow albedo controls the absorbed solar radiation at the surface. Short-term changes in albedo can lead to snow-melt and trigger the positive snow-albedo feedbacks. Little is known about the sub-daily variabilities of albedo in the Arctic, due to a lack of high-temporal-resolution satellite observations and reliable *in situ* measurements. Although the polar-orbiting satellites instrument such as MODIS  
285 pass over parts of Greenland several times a day, only daily average albedo is available mainly due to cloud interference. The cosine response error and the sensor tilt can introduce false diurnal fluctuations into AWS observed albedo. In climate models, the diurnal change of snow albedo is typically simulated as a function of solar zenith angle and snow grain size (van den Broeke et al., 2004; Flanner and Zender, 2006). In reality, more factors contribute to this diurnal change, including  
290 internal properties (such as particle shape and snow density) and external factors (such as solar azimuth angle and topography) (Flanner and Zender, 2006; Wang and Zender, 2011). With the tilt-corrected radiation, we find a more consistent diurnal change in surface albedo. For example, the semi-smiling curves of albedo are smoother using the adjusted data (Fig 5a and b). At stations with large tilt angles, RIGB adjusts the diurnal variability patterns from frowning to smiling (Fig 5c and  
295 d). The average diurnal range (maximum minus minimum) of all stations declines from 0.18 to 0.12 with a 3-times smaller standard deviation.

Sometimes, the pyranometer tilts enough to jeopardize the daily average albedo, which in turn impacts climatology on long-term time scales. For example, at Station UPE\_L in Northwest Greenland, the tilt angle jumped from 2.5° to 9.7° from June to July of 2010. Without tilt correction, data  
300 show an improbably higher albedo in July than in June (Fig. 6a), which contradicts the results from



**Figure 5.** Diurnal variability of albedo at solar zenith angle less than  $75^\circ$  at (a) KPC\_U; (b) JAR-1; (c) Saddle; (d) South Dome. The anomaly used here is the monthly average of hourly anomalies against daily averages.  $\cos(SZA)$  represents the cosine of solar zenith angle. The station altitude and tilt angle-direction as well as data time period are labeled on the top of each panel.

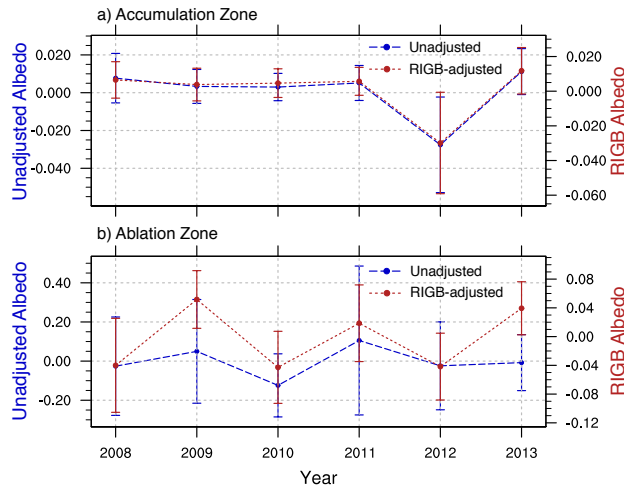


**Figure 6.** Monthly average albedo at a) UPE\_L and b) UPE\_U in May-Aug 2010 with standard deviation as error bars.

a nearby station, UPE\_U (Fig. 6b), as well as the concurrent temperature trend. The high monthly average albedo in the unadjusted data in July 2010 was caused by the abnormally high values in the early mornings and late evenings, due to a shift in downwelling radiation against the upwelling. This misleading effect cannot be fully removed by either the 24-hour running average or limiting the solar zenith angle to less than  $75^\circ$ . After the tilt effect is countered, the normal climatology is restored.

305

Sensor tilt can also affect the inter-annual variability of albedo. In 2012, Greenland experienced the largest melt extent in the satellite era since 1979 (Nghiem et al., 2012), which is seen as an epic low albedo in both unadjusted and RIGB-adjusted data in the accumulation zone (Fig. 7a). In this



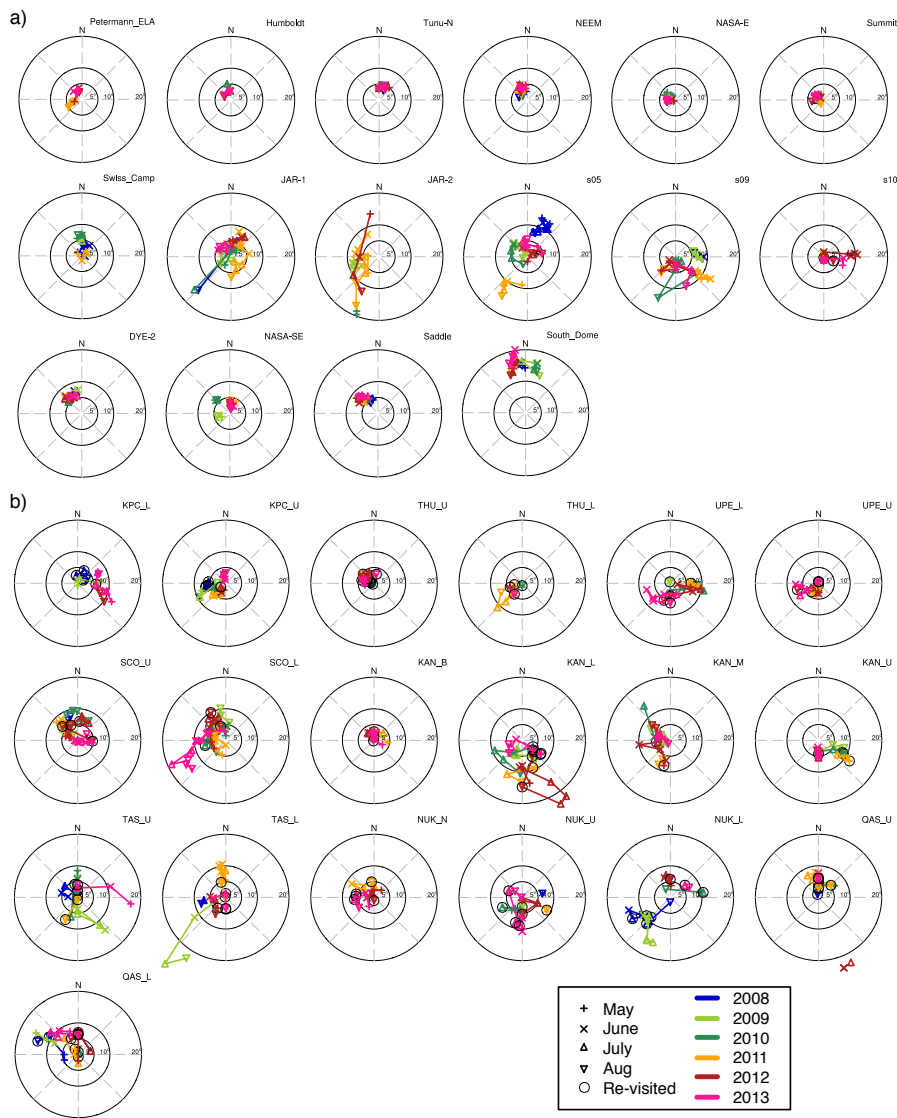
**Figure 7.** Annual average albedo using unadjusted data (on the left Y-axis) and RIGB-adjusted data (on the right Y-axis) in a) accumulation zone; b) ablation zone with standard deviation as error bars. The values are anomalies against the corresponding station averages.

area, melt only occurs during a limited period of time in the summer, and thus the tilt problem is not as serious as in the ablation zone. In despite of the large systematic tilt at the southern stations, the tilt variation is small. In the ablation zone, the unadjusted data shows the smallest albedo in 2010 instead of in 2012. Moreover, the between-station variability of the unadjusted data is almost 5 times larger than that of the RIGB-adjusted data (shown by the error bars in Fig. 7b), indicating varied tilt effects at different stations. After the tilt correction, the long-term trend and the albedo minimum are in agreement with the estimates from the NASA MOD10A data (Box, 2015).

## 6 Discussion

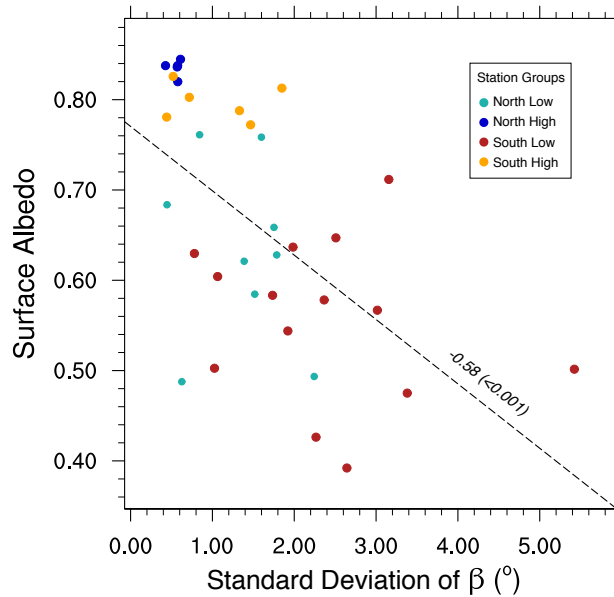
### 6.1 Station Tilt

Of all the stations examined here, only KAN\_B from PROMICE is anchored into rock; all others are anchored into glacier ice. The estimated tilt angle-directions reveal large temporal and spatial varieties (Fig. 8). At the GC-Net stations (Fig. 8a), there is a systematic tilt direction at each station in the accumulation zone. For example, the station at South Dome always tilts to the North, and the one at DYE-2 to the Northwest. With regards to the tilt angle, both the station maximum and the temporal variability are larger in the ablation zone than in the accumulation zone, except for Station South Dome. At the PROMICE stations (Fig. 8b), there is no obvious systematic tilt direction. The tilt angles and their temporal variabilities are generally larger at the southern stations than in the northern stations. It seems that the tilt angles are less variable at GC-Net stations which use long poles as station masts than at PROMICE stations which use tripods instead. However, most GC-Net



**Figure 8.** Station tilt angles (represented by the distance from the circle center) and tilt directions ( $0^\circ$  points to the South) of a) GC-Net and K-transect; b) PROMICE. The markers are circled in black if the stations were re-visited in those months (no re-visiting record for GC-Net is found). There might be multiple tilt angles in one month. The panels of stations on each sub-figure are arranged in the order of latitude, from North to South.

stations are in the colder accumulation zone, whereas all the PROMICE stations are in the warmer ablation zone. We also compare the temporal variability of tilt angles between the paired stations from PROMICE. The station at a higher altitude always has a smaller tilt angle standard deviation than the station at a lower altitude. In addition, the largest and most variable tilt angles are found in July when the snow melt intensity is strongest of the melt season (i.e., May–Aug). These all suggest a causal correlation between surface melt/compaction and station tilt.



**Figure 9.** Correlation between surface albedo and the standard deviation of tilt angles ( $\beta$ ). Numbers on dashed lines are the correlation coefficients. Numbers in the parentheses are the corresponding significant levels based on a two-tailed  $t$  test. Station KAN\_B that is anchored into rock is not included.

Since snow melt intensity is not available at all AWS, surface albedo instead is used to compare  
 335 with the tilt angle variability (Fig. 9). The significant correlation between surface albedo and station  
 tilt variability is negative. The stations that are more northerly, at higher altitudes and with higher  
 albedo are less affected by station tilt, whereas stations more southerly, at lower altitudes and with  
 lower albedo are more affected. However, whether stations will tilt, and to what degree and direction  
 also depend on environmental factors. For example, if the areas around all the anchors melt at a  
 340 similar rate, the station tilt may not be as serious as one with melting that occurs only in the area  
 around one anchor. This may explain why the correlation coefficient is relatively low (-0.58). The  
 significant correlation between near-surface atmospheric temperature and the station tilt variability  
 is negative as well (-0.52). The fact that thermometers from different projects are not set to the  
 same height above the surface may contribute to this lower coefficient. Nevertheless, it is highly  
 345 probable that the station tilt is controlled by surface melt/compaction. As the tilt angle gets larger,  
 more environmental factors take effect.

We also found a weak negative correlation between station tilt and wind speed (i.e., the higher the  
 wind speed, the smaller the tilt variability). However, this could be explained by the co-occurrence of  
 high albedo and high wind speed at high-altitude stations. Moreover, no correlation is found between  
 350 the systematic tilt directions of GC-Net stations in the accumulation zone and their dominating wind  
 directions. These systematic tilt directions could be a result of the local slopes or glacier dynamics  
 (Konrad Steffen, 2015: personal communication).



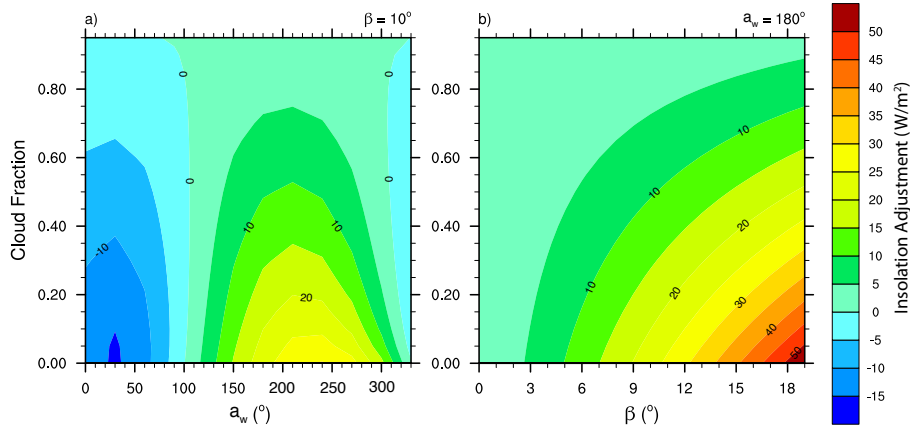
## 6.2 Dependence on Clear Days

The RIGB method requires clear days to perform the tilt estimation. With current precision, at least  
355 one clear day is needed per month. Among all the 840 station-months used in this study (i.e., 35  
stations, 6 years per station and 4 months per year), there are 33 station-months (3.93%) with no  
clear days to use. However, most of these (31 out of 33) have at least half of the AWS measurements  
missing. Only 2 of the 840 station-months was too cloudy to have any clear days. We therefore  
provide no correction during that month. Another potential limit of RIGB is that it requires more  
360 clear days to accurately capture station tilt when the inter-month variability is large.

## 6.3 Uncertainty in the Tilt-Corrected Insolation

The surface insolation simulation using CRM driven by AIRS profiles under clear-sky conditions are  
validated against Atmospheric Radiation Measurements (ARM) at Barrow, Alaska, U.S.A (Atmo-  
spheric Radiation Measurement (ARM) Climate Research Facility, 1994). Since we use a constant  
365 Aerosol Optical Depth (AOD), only insolation in May is used in order to eliminate the interference  
of wild fires. From 2008 to 2013, the hourly average difference between the measured and simulated  
insolation is  $5 \pm 3 \text{ W m}^{-2}$ , which is less than  $2 \pm 1\%$  of the daily average.

The data quality of the tilt-corrected insolation under all-sky conditions also relies on the quality  
of cloud fraction data. Higher cloud fraction results in a higher diffuse ratio (C). With more isotropic  
370 diffuse radiation, insolation is less susceptible to station tilt. Therefore, if the cloud fraction is under-  
estimated, the insolation will be over-corrected; vice versa. In the Arctic, the fast-changing convective  
clouds are rare, so we use the 3-hourly cloud fraction from CERES. With regards to the cloud  
radiative properties, CERES estimates are reasonably accurate (Minnis et al., 2011). In the Arctic,  
the average difference between the *in situ* ground-measured and CERES cloud fraction is  $\sim 0.15$   
375 (Minnis et al., 2008). The effect of cloud fraction on the insolation adjustment depends on both the  
tilt angles and directions (Fig. 10). The adjustment at local solar noon is largest when the station  
tilts to the North ( $a_w = 180^\circ$ ) or South ( $a_w = 0^\circ$ ). The maximum of daily average turns clockwise,  
e.g., to  $a_w = 30^\circ$  and  $a_w = -150^\circ$  when the tilt angle ( $\beta$ ) is  $10^\circ$ . The adjustment becomes smaller  
when stations tilt less, or cloud fraction is close to 1. In the worst situation when stations tilt to  $30^\circ$   
380 or  $210^\circ$  and the cloud fraction is close to 0, the uncertainty in insolation adjustment caused by cloud  
uncertainty is up to  $7.5 \text{ W m}^{-2}$  at a tilt angle of  $10^\circ$ . In 90% of the station-months we used, tilt angles  
are less than  $10^\circ$ , 95% less than  $15^\circ$ . The average cloud fraction in the Arctic during summertime  
is 0.81 (Vavrus et al., 2008). Therefore, the uncertainty in insolation adjustment caused by the un-  
certainty in cloud fraction should be well below  $10 \text{ W m}^{-2}$ , the magnitude of the adjustment itself.  
385 Nevertheless, a cloud fraction dataset with a higher resolution would further benefit the quality of  
the hourly radiation measurements from AWS.



**Figure 10.** The effect of cloud fraction on daily average tilt correction of insolation changing with a) tilt direction ( $a_w$ ) and b) tilt angle ( $\beta$ ).

The AWS used in these three projects over Greenland Ice Sheet measure only broadband radiation. We, therefore, use a wavelength-integrated relationship between diffuse ratio (C) and cloud fraction (CF), derived from broadband radiation measurements using linear regression. Regression models using higher orders or more predictors, such as relative humidity, do not perform significantly better (Paulescu and Blaga, 2016). Also, there is no significant difference in the calculation of radiation on tilted surface by using diffuse radiation estimated from a diffuse fraction correlation or retrieved from observations (Reindl et al., 1990). Although tilt-induced errors are independent of wavelength for direct radiation, they vary with wavelength for diffuse radiation (Bogren et al., 2015). The diffuse/direct ratio (C) also increases with shorter wavelengths (Hudson et al., 2006; Bogren et al., 2015). The equations in Section 3 could be instead written as function of wavelength with diffuse ratio,  $C(\lambda)$ , and radiation fluxes,  $I(\lambda)$ . Therefore, if narrow-band measurements of shortwave radiation and the corresponding diffuse ratios are available, RIGB can be applied to correct spectral tilt-induced errors.

## 400 7 Conclusions

In this study, we identify and correct the SW tilt bias using tilt angles and directions estimated by comparing CRM simulated insolation with AWS observed insolation under clear-sky conditions. Station tilt causes considerable bias in insolation. On fewer than 40% of clear days, the unadjusted insolation peaks at the correct solar noon time ( $\pm 0.5$  hr). The largest bias exceeds 3 hours. The unadjusted insolation RMSE against CERES and MERRA at all stations are as large as  $\sim 70 \text{ W m}^{-2}$  under clear-sky conditions, with a correlation coefficient of  $\sim 0.90$ . Using the estimated tilt angle-directions, which are in a good agreement with the measured tilt angles, RIGB adjustment reduces the RMSE by  $16 \text{ W m}^{-2}$ , and enhances the correlation coefficients to above 0.95. The overall im-

provement relative to the unadjusted data under all-sky conditions is  $11 \text{ W m}^{-2}$ , which is enough  
 410 to melt 0.24 m snow water equivalent using an albedo of 0.7. With this tilt-corrected SW data, we  
 found a consistent semi-smiling diurnal cycle of albedo in Greenland. The derived seasonal and inter-  
 annual variabilities of albedo agree better with satellite observations and temperature changes. This  
 RIGB tilt correction method relies only on the iterative application of solar geometric principles,  
 that requires no additional instrumentation. Therefore, it can retrospectively solve the tilt problems  
 415 in SW measurement, and provides multi-year consistent SW for the analysis of surface energy bud-  
 gets and melt as well as validation of satellite observations and model simulations on Greenland Ice  
 Sheet and in other snow-covering areas.

### Appendix A: Nomenclature.

**Table 4.** Variables used in Section 3

$I_h$	Shortwave radiation on a horizontal surface, $\text{W m}^{-2}$
$I_t$	Shortwave radiation on a tilted surface, $\text{W m}^{-2}$
$I_{b,h/t}$	Beam radiation on a horizontal/tilted surface, $\text{W m}^{-2}$
$I_{d,h/t}$	Diffuse radiation on a horizontal/tilted surface, $\text{W m}^{-2}$
$I_{r,t}$	Reflected radiation from a nearby horizontal surface on a tilted surface, $\text{W m}^{-2}$
$\beta$	Tilt angle, radians
$a_w$	Tilt direction, radians
$z$	Solar zenith angle observed from a horizontal surface, radians
$i$	Solar zenith angle observed from a tilted surface, radians
$a_s$	Solar azimuth angle, radians
$C$	Diffuse ratio
$\rho$	Surface albedo approximation
CF	Cloud fraction

*Acknowledgements.* W. Wang thanks Carolyn McClaskey, Andreas Peter Ahlstrøm, Konrad Steffen, Marie Du-  
 420 mont and the anonymous reviewer for their constructive feedbacks. The authors acknowledge the GC-Net team  
 for providing and helping to interpret AWS measurements. CERES cloud and radiation data were obtained  
 from the NASA Langley Research Center Atmospheric Science Data Center; MERRA radiation data were ob-  
 tained from the Global Modeling and Assimilation Office and the Goddard Earth Sciences Data and Information  
 Services Center. This work was funded by NASA Grants NNX12AF48A and NNX14AH55A.

## 425 References

- AIRS Science Team/Joao Teixeira: Aqua AIRS Level 2 Support Retrieval (AIRS+AMSU), version 006, NASA Goddard Earth Science Data and Information Services Center (GES DISC), Greenbelt, MD, USA, doi:10.5067/AQUA/AIRS/DATA207, accessed 2015-05-07, 2013.
- Andersen, M., Stenseng, L., Skourup, H., Colgan, W., Khan, S., Kristensen, S., Andersen, S., Box, J., Ahlstrøm, A., Fettweis, X., and Forsberg, R.: Basin-scale partitioning of Greenland ice sheet mass balance components (2007–2011), *Earth and Planetary Science Letters*, 409, 89–95, doi:10.1016/j.epsl.2014.10.015, <http://www.sciencedirect.com/science/article/pii/S0012821X14006360>, 2015.
- Atmospheric Radiation Measurement (ARM) Climate Research Facility: Data Quality Assessment for ARM Radiation Data (QCRAD1LONG). 2008-05-01 to 2013-05-31, 71.323 N 156.609 W: North Slope Alaska (NSA) Central Facility, Barrow AK (C1), Oak Ridge, Tennessee, USA, doi:10.5439/1027372, compiled by Y. Shi and L. Riihimäki, accessed 2015-08-21, 1994.
- Bais, a. F., Kazadzis, S., Balis, D., Zerefos, C. S., and Blumthaler, M.: Correcting global solar ultraviolet spectra recorded by a Brewer spectroradiometer for its angular response error., *Applied Optics*, 37, 6339–6344, doi:10.1364/AO.37.006339, 1998.
- Biggs, W. W.: Principles of Radiation Measurement, in: Excerpted from: *Advanced Agricultural Instrumentation*. Proceedings from the NATO Advanced Study Institute on “Advanced Agricultural Instrumentation”, edited by Gensler, W., pp. 1–17, Martinus Nijhoff, Dordrecht, The Netherlands, 2 edn., doi:10.1016/B978-0-12-374271-1.00071-X, 2015.
- Bogren, W. S., Burkhart, J. F., and Kylling, a.: Tilt error in cryospheric surface radiation measurements at high latitudes: a model study, *The Cryosphere Discussions*, 9, 4355–4376, doi:10.5194/tcd-9-4355-2015, <http://www.the-cryosphere-discuss.net/9/4355/2015/>, 2015.
- Box, J. E.: Greenland melt season kicks off slowly in 2015; the new abnormal, <http://www.meltfactor.org/blog/greenland-melt-season-kicks-off-slowly-in-2015/>, 2015.
- Box, J. E., Fettweis, X., Stroeve, J. C., Tedesco, M., Hall, D. K., and Steffen, K.: Greenland ice sheet albedo feedback: thermodynamics and atmospheric drivers, *The Cryosphere*, 6, 821–839, doi:10.5194/tc-6-821-2012, <http://www.the-cryosphere.net/6/821/2012/>, 2012.
- CERES Science Team: CERES SYN1deg-3Hour, Ed3A, NASA Atmospheric Science Data Center (ASDC), Hampton, VA, USA, doi:10.5067/Terra+Aqua/CERES/SYN1deg3HOUR\_L3.003A, accessed 2015-05-08.
- Enderlin, E. M., Howat, I. M., Jeong, S., Noh, M.-J., van Angelen, J. H., and van den Broeke, M. R.: An improved mass budget for the Greenland ice sheet, *Geophysical Research Letters*, 41, 866–872, doi:10.1002/2013GL059010, <http://doi.wiley.com/10.1002/2013GL059010>, 2014.
- Fettweis, X.: Reconstruction of the 1979–2006 Greenland ice sheet surface mass balance using the regional climate model MAR, *The Cryosphere*, 1, 21–40, doi:10.5194/tc-1-21-2007, <http://www.the-cryosphere.net/1/21/2007/tc-1-21-2007.html>, 2007.
- Flanner, M. G. and Zender, C. S.: Linking snowpack microphysics and albedo evolution, *Journal of Geophysical Research*, 111, D12 208, doi:10.1029/2005JD006834, <http://www.agu.org/pubs/crossref/2006/2005JD006834.shtml>, 2006.
- Goswami, D., Kreith, F., and Kreider, J.: Radiation on tilted surface, in: *Principles of Solar Engineering*, Second Edition, Taylor & Francis, 2000.

- 465 Grenfell, T. C., Warren, S. G., and Mullen, P. C.: Reflection of solar radiation by the Antarctic snow surface at ultraviolet, visible, and near-infrared wavelengths, *Journal of Geophysical Research*, 99, 18 669, doi:10.1029/94JD01484, <http://onlinelibrary.wiley.com/doi/10.1029/94JD01484/abstract>, 1994.
- Harrison, R. G., Chalmers, N., and Hogan, R. J.: Retrospective cloud determinations from surface solar radiation measurements, *Atmospheric Research*, 90, 54–62, doi:10.1016/j.atmosres.2008.04.001, 2008.
- 470 Hudson, S. R., Warren, S. G., Brandt, R. E., Grenfell, T. C., and Six, D.: Spectral bidirectional reflectance of Antarctic snow: Measurements and parameterization, *Journal of Geophysical Research*, 111, D18 106, doi:10.1029/2006JD007290, <http://doi.wiley.com/10.1029/2006JD007290>, 2006.
- Kipp & Zonen: Instruction manual for Kipp & Zonen CM3, Tech. rep., Kipp & Zonen B.V., Delft, Holland, 2004.
- 475 Kuipers Munneke, P., Reijmer, C. H., and van den Broeke, M. R.: Assessing the retrieval of cloud properties from radiation measurements over snow and ice, *International Journal of Climatology*, 31, 756–769, doi:10.1002/joc.2114, <http://doi.wiley.com/10.1002/joc.2114>, 2011.
- Minnis, P., Trepte, Q. Z., Sun-Mack, S., Chen, Y., Doelling, D. R., Young, D. F., Spangenberg, D. a., Miller, W. F., Wielicki, B. a., Brown, R. R., Gibson, S. C., and Geier, E. B.: Cloud detection in nonpolar regions  
480 for CERES using TRMM VIRS and Terra and Aqua MODIS data, *IEEE Transactions on Geoscience and Remote Sensing*, 46, 3857–3884, doi:10.1109/TGRS.2008.2001351, 2008.
- Minnis, P., Sun-Mack, S., Chen, Y., Khaiyer, M. M., Yi, Y., Ayers, J. K., Brown, R. R., Dong, X., Gibson, S. C., Heck, P. W., Lin, B., Nordeen, M. L., Nguyen, L., Palikonda, R., Smith, W. L., Spangenberg, D. a., Trepte, Q. Z., and Xi, B.: CERES edition-2 cloud property retrievals using TRMM VIRS and Terra and Aqua  
485 MODIS data-Part II: Examples of average results and comparisons with other data, *IEEE Transactions on Geoscience and Remote Sensing*, 49, 4401–4430, doi:10.1109/TGRS.2011.2144602, 2011.
- Nghiem, S. V., Hall, D. K., Mote, T. L., Tedesco, M., Albert, M. R., Keegan, K., Shuman, C. A., DiGirolamo, N. E., and Neumann, G.: The extreme melt across the Greenland ice sheet in 2012, *Geophysical Research Letters*, 39, n/a–n/a, doi:10.1029/2012GL053611, <http://doi.wiley.com/10.1029/2012GL053611>, 2012.
- 490 Paulescu, E. and Blaga, R.: Regression models for hourly diffuse solar radiation, *Solar Energy*, 125, 111–124, doi:10.1016/j.solener.2015.11.044, <http://linkinghub.elsevier.com/retrieve/pii/S0038092X15006672>, 2016.
- Pithan, F. and Mauritsen, T.: Arctic amplification dominated by temperature feedbacks in contemporary climate models, *Nature Geoscience*, 7, 181–184, doi:10.1038/ngeo2071, <http://www.nature.com/doi/10.1038/ngeo2071>, 2014.
- 495 Reda, I. and Andreas, A.: Solar position algorithm for solar radiation applications, *Solar Energy*, 76, 577–589, doi:10.1016/j.solener.2003.12.003, <http://linkinghub.elsevier.com/retrieve/pii/S0038092X0300450X>, 2004.
- Reindl, D., Beckman, W., and Duffie, J.: Evaluation of hourly tilted surface radiation models, *Solar Energy*, 45, 9–17, doi:10.1016/0038-092X(90)90061-G, 1990.
- Rienecker, M. M., Suarez, M. J., Gelaro, R., Todling, R., Bacmeister, J., Liu, E., Bosilovich, M. G., Schubert, S. D., Takacs, L., Kim, G.-K., Bloom, S., Chen, J., Collins, D., Conaty, A., da Silva, A., Gu, W., Joiner, J., Koster, R. D., Lucchesi, R., Molod, A., Owens, T., Pawson, S., Pegion, P., Redder, C. R., Reichle, R., Robertson, F. R., Ruddick, A. G., Sienkiewicz, M., and Woollen, J.: MERRA: NASA's Modern-Era Retrospective Analysis for Research and Applications, *Journal of Climate*, 24, 3624–3648, doi:10.1175/JCLI-D-11-00015.1, <http://journals.ametsoc.org/doi/abs/10.1175/JCLI-D-11-00015.1>, 2011.

- 505 Schaaf, C. B., Wang, Z., and Strahler, A. H.: Commentary on Wang and Zender—MODIS snow albedo bias at high solar zenith angles relative to theory and to in situ observations in Greenland, *Remote Sensing of Environment*, 115, 1296–1300, doi:10.1016/j.rse.2011.01.002, <http://linkinghub.elsevier.com/retrieve/pii/S0034425711000150>, 2011.
- Steffen, C., Box, J., and Abdalati, W.: Greenland Climate Network: GC-Net, US Army Cold Regions Reattach and Engineering (CRREL), CRREL Special Report, pp. 98–103, 1996.
- 510 Stroeve, J., Box, J. E., Gao, F., Liang, S., Nolin, A., and Schaaf, C.: Accuracy assessment of the MODIS 16-day albedo product for snow: comparisons with Greenland in situ measurements, *Remote Sensing of Environment*, 94, 46–60, doi:10.1016/j.rse.2004.09.001, <http://www.sciencedirect.com/science/article/pii/S0034425704002846>, 2005.
- 515 Stroeve, J., Box, J. E., Wang, Z., Schaaf, C., and Barrett, A.: Re-evaluation of MODIS MCD43 Greenland albedo accuracy and trends, *Remote Sensing of Environment*, 138, 199–214, doi:10.1016/j.rse.2013.07.023, <http://linkinghub.elsevier.com/retrieve/pii/S0034425713002356>, 2013.
- Stroeve, J. C., Box, J. E., Fowler, C., Haran, T., and Key, J.: Intercomparison between in situ and AVHRR polar pathfinder-derived surface albedo over Greenland, *Remote Sensing of Environment*, 75, 360–374, doi:10.1016/S0034-4257(00)00179-6, 2001.
- 520 Susskind, J., Barnet, C., and Blaisdell, J.: Retrieval of atmospheric and surface parameters from AIRS/AMSU/HSB data in the presence of clouds, *IEEE Transactions on Geoscience and Remote Sensing*, 41, 390–409, doi:10.1109/TGRS.2002.808236, <http://ieeexplore.ieee.org/lpdocs/epic03/wrapper.htm?arnumber=1196056>, 2003.
- 525 Tedesco, M., Fettweis, X., Mote, T., Wahr, J., Alexander, P., Box, J. E., and Wouters, B.: Evidence and analysis of 2012 Greenland records from spaceborne observations, a regional climate model and reanalysis data, *The Cryosphere*, 7, 615–630, doi:10.5194/tc-7-615-2013, 2013.
- van As, D.: Warming, glacier melt and surface energy budget from weather station observations in the Melville Bay region of northwest Greenland, *Journal of Glaciology*, 57, 208–220, doi:10.3189/002214311796405898, <http://openurl.ingenta.com/content/xref?genre=article&issn=0022-1430&volume=57&issue=202&spage=208>, 2011.
- 530 van As, D. and Fausto, R. S.: Programme for Monitoring of the Greenland Ice Sheet ( PROMICE ): first temperature and ablation records, *Geological Survey of Denmark and Greenland Bulletin*, 23, 73–76, 2011.
- van As, D., Andersen, M. L., Petersen, D., Fettweis, X., Van Angelen, J. H., Lenaerts, J. T., Van Den Broeke, M. R., Lea, J. M., Bø ggild, C. E., Ahlstrø m, A. P., and Steffen, K.: Increasing meltwater discharge from the Nuuk region of the Greenland ice sheet and implications for mass balance (1960–2012), *Journal of Glaciology*, 60, 314–322, doi:10.3189/2014JoG13J065, 2014.
- 535 van den Broeke, M., van As, D., Reijmer, C., and van de Wal, R.: Assessing and Improving the Quality of Unattended Radiation Observations in Antarctica, *Journal of Atmospheric and Oceanic Technology*, 21, 1417–1431, doi:10.1175/1520-0426(2004)021<1417:AAITQO>2.0.CO;2, <http://journals.ametsoc.org/doi/abs/10.1175/1520-0426%282004%29021%3C1417%3AAAITQO%3E2.0.CO%3B2>, 2004.
- 540 van den Broeke, M., Bamber, J., Ettema, J., Rignot, E., Schrama, E., van de Berg, W. J., van Meijgaard, E., Velicogna, I., and Wouters, B.: Partitioning recent Greenland mass loss., *Science (New York, N.Y.)*, 326, 984–6, doi:10.1126/science.1178176, <http://www.sciencemag.org/content/326/5955/984.abstract>, 2009.

- 545 van den Broeke, M. R., Smeets, C. J. P. P., and van de Wal, R. S. W.: The seasonal cycle and interannual  
variability of surface energy balance and melt in the ablation zone of the west Greenland ice sheet, *The  
Cryosphere*, 5, 377–390, doi:10.5194/tc-5-377-2011, 2011.
- Vavrus, S., Waliser, D., Schweiger, A., and Francis, J.: Simulations of 20th and 21st century Arctic cloud  
amount in the global climate models assessed in the IPCC AR4, *Climate Dynamics*, 33, 1099–1115,  
550 doi:10.1007/s00382-008-0475-6, <http://link.springer.com/10.1007/s00382-008-0475-6>, 2008.
- Velicogna, I. and Wahr, J.: Time-variable gravity observations of ice sheet mass balance: Precision and limi-  
tations of the GRACE satellite data, *Geophysical Research Letters*, 40, 3055–3063, doi:10.1002/grl.50527,  
<http://doi.wiley.com/10.1002/grl.50527>, 2013.
- Wang, X. and Zender, C. S.: Constraining MODIS snow albedo at large solar zenith angles: Implica-  
555 tions for the surface energy budget in Greenland, *Journal of Geophysical Research*, 115, F04015,  
doi:10.1029/2009JF001436, <http://www.agu.org/pubs/crossref/2010/2009JF001436.shtml>, 2010a.
- Wang, X. and Zender, C. S.: MODIS snow albedo bias at high solar zenith angles relative to theory and to in situ  
observations in Greenland, *Remote Sensing of Environment*, 114, 563–575, doi:10.1016/j.rse.2009.10.014,  
<http://linkinghub.elsevier.com/retrieve/pii/S003442570900323X>, 2010b.
- 560 Wang, X. and Zender, C. S.: Arctic and Antarctic diurnal and seasonal variations of snow albedo from mul-  
tiyear Baseline Surface Radiation Network measurements, *Journal of Geophysical Research*, 116, F03008,  
doi:10.1029/2010JF001864, <http://www.agu.org/pubs/crossref/2011/2010JF001864.shtml>, 2011.
- Zender, C. S.: Global climatology of abundance and solar absorption of oxygen collision complexes,  
*Journal of Geophysical Research*, 104, 24 471, doi:10.1029/1999JD900797, [http://doi.wiley.com/10.1029/  
565 1999JD900797](http://doi.wiley.com/10.1029/1999JD900797), 1999.