

# Brief Communication: Twelve-year cyclic surging episode at Donjek Glacier in Yukon, Canada

T. Abe<sup>1</sup>, M. Furuya<sup>1</sup> and D. Sakakibara<sup>2, 3</sup>

[1]{Graduate School of Science, Hokkaido University, Sapporo Japan}

[2]{Graduate School of Environmental Science, Hokkaido University, Sapporo, Japan}

[3]{Institute of Low Temperature Science, Hokkaido University, Sapporo, Japan}

Correspondence to: T. Abe (abetaka@frontier.hokudai.ac.jp)

## Abstract

Surge-type glaciers repeat their short active phase and their much longer quiescent phase usually every several decades or longer, but detailed observations of the evolution cycles have been limited to only a few glaciers. Here we report three surging episodes in 1989, 2001, and 2013 at Donjek Glacier in the Yukon, Canada, indicating remarkably regular and short repeat cycles of 12 years. The surging area is limited within the ~20 km section from the terminus, originating in an area where the flow width significantly narrows downstream, suggesting a strong control of the valley constriction on the surge dynamics.

## 1 Introduction

During their short (1-15 years) active phase, surge-type glaciers typically speed up by several-fold to over an order-of-magnitude, resulting in significant thickness changes and km-scale terminus advance (Meier and Post, 1969; Raymond, 1987; Harrison and Post, 2003). In their quiescent phase (tens to hundreds of years), they flow slowly or become stagnant. Meanwhile, ice accumulates in the upstream area and the imbalanced flow causes retreating and thinning in the downstream area, which produces a steeper glacier surface in the upstream. This part of the quiescent phase is sometimes called the build-up phase (Dolgoushin and Osipova, 1975; Jiskoot, 2011). As to the cause of the surge, two generation mechanisms have been proposed: the Alaskan-type and the Svalbard-type (e.g., Murray et al., 2003).

1 In Alaskan temperate glaciers, the active phase is relatively short, lasting a few months to  
2 years, and can have a rapid speed-up and slow-down. The Alaskan-type surge often initiates  
3 in winter (Raymond, 1987; Harrison and Post, 2003). The initiation mechanism is thought to  
4 be a hydrological transition from efficient tunnel-like drainage to inefficient linked-cavity  
5 drainage with a corresponding increase in water pressure (Kamb et al., 1985; Harrison and  
6 Post, 2003). In contrast, in Svalbard polythermal glaciers, the speed-up is gradual, leading to  
7 years-long active surging. For these glaciers, the active-phase duration and the recurrence  
8 interval are much longer than those in the temperate Alaskan-type. Moreover, for Svalbard  
9 polythermal glaciers, the surge generation mechanism has been considered to be thermal  
10 regulation (e.g., Murray et al., 2003). However, recent observations have shown seasonal  
11 modulation in ice speed during the years-long active surging, which indicates the importance  
12 of the hydrological process, originating from the surface meltwater, for maintaining a multi-  
13 year active phase (Yasuda and Furuya, 2015).

14 Near the border of Alaska and the Yukon, Canada, there are many surge-type glaciers (Meier  
15 and Post, 1969; Raymond, 1987; Harrison and Post, 2003). The surge cycles in this area have  
16 been examined (e.g., Eisen et al., 2001; 2005; Frappé and Clarke, 2007; Burgess et al., 2012;  
17 Bevington and Copland, 2014), but many questions remain about the detailed surging  
18 dynamics (Raymond, 1987; Harrison and Post, 2003; Cuffey and Paterson, 2010).

19 Recent advances in spaceborne remote sensing can provide insight into surging glacier  
20 dynamics. In particular, synthetic aperture radar (SAR) images have revealed spatial and  
21 temporal changes in ice velocity at surge-type glaciers in Alaska and the Yukon (Burgess et  
22 al., 2013; Abe and Furuya, 2015). The temporal coverage of spaceborne SAR data is still too  
23 short to investigate long-term evolution in ice speed, although SAR allows us to image remote  
24 areas regardless of weather conditions and acquisition time (i.e. SAR data acquisition can be  
25 done both daytime and nighttime). Landsat optical images distributed by the United States  
26 Geological Survey (USGS) have been available since 1972. While optical images have their  
27 limitations in local weather conditions, they have revealed the long-term changes in terminus  
28 positions and velocities of mountain glaciers around the world (e.g., McNabb and Hock,  
29 2014; Sakakibara and Sugiyama, 2014).

30 To reveal the long-term evolution of Donjek Glacier, we use Landsat optical images  
31 acquired between 1973 and 2014 to derive the spatial-temporal changes in ice speed (1986-

2014) and the terminus areas (1973-2014). As a consequence, we report here our findings of three surging events as well as a likely surging event pre-1985.

## 2 Donjek Glacier

Donjek Glacier is located in southwest Yukon (Fig. 1a). Steele, Spring, and Kluane Glaciers are major surge-type glaciers located around Donjek (Clarke and Holdsworth, 2002). The entire length and area of Donjek Glacier are 55 km and 448 km<sup>2</sup>, respectively. Donjek Glacier lies at an elevation of 1000–3000 m, and the valley width significantly constricts downstream of 20 km from the terminus. The terminus spreads out as it flows into the river valley to form a small piedmont lobe. Former surges have caused this lobe to expand to the east against the Donjek Ranges, which blocked the flow in the river (e.g., Clarke and Mathews, 1981). Recent airborne laser altimetry revealed that the mass balance of Donjek Glacier was  $-0.29 \text{ m w.e. yr}^{-1}$  (Larsen et al., 2015). Previous studies mentioned past surging events in 1935, 1961, 1969, and 1978 (Johnson, 1972a; 1972b; Clarke and Holdsworth, 2002). The earliest three events were recognized using aerial photogrammetry and morphological features. However, the details of the observations (e.g., data source and the observation frequency) and even the duration of the active phase are unclear. Moreover, surges since the 1980s are unreported, and the long-term evolution remains uncertain. Donjek's last tributary (Fig. 1a) is also known as a surge-type glacier that was active in 1974 (Clarke and Holdsworth, 2002), but there is no recent report of this tributary's surge.

## 3 Data and method

We used Landsat optical images, to examine terminus changes from 1973 to 2014 and flow-speed evolution from 1986 to 2014. Because of the lower spatial resolution of the images prior to 1986, we could not derive the velocities between 1973 and 1985, but the images were helpful to examine the terminus changes even in 1970s. These images were acquired by the Landsat 1-5 Multi-Spectral Scanner (MSS), the Landsat 4-5 Thematic Mapper (TM), the Landsat 7 Enhanced Thematic Mapper Plus (ETM+), and the Landsat 8 Operational Land Imager (OLI), all of which are distributed by the USGS (<http://landsat.usgs.gov/>).

While there are a variety of image matching (i.e. feature tracking) methods to derive glacier surface speed (e.g., Heid and Kääb, 2012), we used the Cross-Correlation in Frequency

domain on Orientation images (CCF-O) algorithm (Fitch et al., 2002) to derive surface velocity in this study because for Alaskan glaciers, the CCF-O algorithm performs better than the other methods (Heid and Kääb, 2012). For details of how we applied this method, see the supplement.

We also examined the fluctuation of the terminus area associated with the surging events using the false color composite images (see the supplement). The spatial resolution of a composite image is 60 m for the MSS images and 30 m for the others. We calculated the terminus area changes using a reference line set about 5 km upstream to create a polygon representing the edge of the terminus. Moreover, we investigated the behavior of the tributary and examined the interaction of it to the main stream by the composite images.

## 4 Results

Figure 1b shows the ice speed map for the 2001 surge as an example, and Figure 1c indicates the spatial-temporal velocity evolution along the flow line shown in Fig. 1a from 1986 to 2014. In 1989, 2001 and 2013, the speed near the terminus appears much greater, by up to 2 m/d, 4.5 m/d, and 3 m/d, respectively, than that during the other years (i.e. quiescent phases), which is about 0.5 m/d or less. During the three active phases, the speed-up regions are mostly limited to the ~20-km section from the terminus (see also Fig. 1b), which we associate below with the shape of the glacier.

We compare the width of the valley with the velocities associated with the three surging episodes (Fig. 1d). The initiation of the three surging episodes occurred in the valley at the section between 18 and 22 km from the terminus is about 33% narrower than upstream (Fig. 1c), which is also an S-shaped valley. Meanwhile, the velocities further upstream do not show any significant temporal changes throughout the analysed period, maintaining a speed of about 1.0 m/d (Figs. 1c and d). Also, the velocity front of ~0.5 m/d (i.e. the boundary between the stagnant and moving part near the terminus) propagates downstream for the 5-year or longer period prior to the 2001 and 2013 active phases (red arrows in Fig. 1c). The active phase seems to initiate when this front reaches the terminus. In addition, the velocities behind the front clearly indicate a gradual acceleration toward the peak active phases. However, we cannot identify a clear timing of the surge initiation and termination season, which could be due to the multi-year precursory acceleration or a lack of temporal resolution in the available data.



The red curve in Fig. 2a shows the temporal changes of the ice speed averaged over the section between 0 and 5 km from the terminus. This curve has three significant peaks, which correspond to the active phases in 1989, 2001, and 2013 (Figs. 1c and d). The peak magnitudes all differ, but the differences are likely due mainly to the coarse temporal sampling of the velocities. In the 2001 event (Fig. 2b), the speed starts to gradually increase in late 1998–1999, rapidly increasing in late 2000–2001, and rapidly decreasing in 2003. The evolution of the speed for the 2013 event (Fig. 2c) is similar to that for the 2001 event. Namely, the speed starts to gradually increase in late 2011–2012, rapidly increasing in late 2012 and then terminates in late 2013. Although the data do not resolve the exact month or season of the initiation, the duration of the active phase is about 1 year.

The terminus area also changes from 1973 to 2014, with decadal fluctuations superimposed on a gradual decrease. The black line in Fig. 2a indicates a long-term rate of decrease of  $-0.2 \text{ km}^2/\text{yr}$ , which presumably indicates the negative mass balance trend from recent climate warming (e.g., Luthcke et al., 2013; Larsen et al., 2015). The decadal fluctuations in blue show peaks around 1980, 1991, 2002, and 2014. Comparing those peaks with the speed changes in red, the last three peaks in blue coincide with the last three peaks in the speed data, with a 0-to-2 year time lag (Fig. 2a). These correspondences indicate that the decadal fluctuations in terminus area are attributable to the sudden speed-up of a surge event. During a surge, a significant volume of ice must be rapidly transported to the terminus area, and thus the wax and wane of the terminus area occur with the surge cycle. Although our speed measurement do not go back before 1985, such a surge is likely the reason for the temporal increase of the terminus area around 1980 as well.

There are many looped moraines on the main stream induced by the tributary's surge (Fig. 3a). During the period between 1973 and 2014, we observed the two surge events, in 1973–74 (Fig. 3b) and 2009–10 (Fig. 3e), and couldn't identify any surges between 1974 and 2009.

## 5 Discussion and Conclusion

Post (1969) developed the first comprehensive map of the distributions of surge-type glaciers near the border of Alaska and Yukon, mostly based on aerial photogrammetry. Donjek Glacier was also identified as a surge-type, presumably from its 1961 surge. However, the timing of past surging events at Donjek Glacier from previous studies includes large uncertainties. Those data sources have very different spatial and temporal coverages than ours,

1 and the active surging was largely judged from morphological observations. For instance, we  
2 could not find any descriptions of the activity of the surge at Donjek Glacier in the 1960s.  
3 Regarding the 1969 surge, Johnson (1972b) noted that the terminus advance was less than 500  
4 meters, which was much smaller than about 1-km advances of the earlier surges in 1935, 1961,  
5 and the recent three surges in 1989, 2001, 2013. However, given the recent observations, we  
6 may argue that a mini-surge-like acceleration (so-called pulse) could cause the slight advance  
7 of the terminus in 1969, a mini event like the pulse-like events in 1995 and 2009 (Fig. 1c). In  
8 addition, according to Johnson (1972a), there were no observations before 1935. Thus, we  
9 cannot say the surge initiated in 1935. Therefore, we do not merge these past events with our  
10 findings.

11 The recurrence intervals between the 1989 and 2001 events and between the 2001 and 2013  
12 events are 12 years (Figs. 1c and 2a). Although we cannot derive the velocity data before  
13 1985, the similar 12-year fluctuation in terminus area that extends before 1985 strongly  
14 suggests that previous surging occurred in the late 1970s. Such a surge is consistent with the  
15 previous report of the surge in 1978 (Clarke and Holdsworth, 2002). The 12-year recurrence  
16 interval is as short as the latest interval at Lowell Glacier (Bevington and Copland, 2014).  
17 Lowell Glacier experienced five surges between 1948 and 2013, and the surge-cycle  
18 recurrence interval (12-20 years) has been shortening over time, which is interpreted as being  
19 due to a strongly negative mass balance since the 1970s or earlier (Bevington and Copland,  
20 2014). Variegated Glacier is one of the most famous surge-type glaciers in Alaska, and its  
21 surge cycle has been well-studied (Eisen et al., 2001; 2005). Eisen et al. (2001) attributed the  
22 variability in the recurrence intervals to the variable annual mass balance. However, in  
23 contrast to the Lowell and Variegated Glaciers, whose average recurrence intervals are 15.25  
24 (Bevington and Copland, 2014) and 15 years (Eisen et al., 2005), respectively, the recurrence  
25 interval at Donjek Glacier is not only shorter but also apparently less variable over time,  
26 which we consider as significant differences despite the three surge-type glaciers sharing a  
27 similar climate.

28 The behaviour of Donjek Glacier is similar to Medvezhiy Glacier in Tajikistan (Dolgoushin  
29 and Osipova, 1975, Cuffey and Paterson, 2010), in that both have a short recurrence interval  
30 (10-14 years) and both have apparent geometrical control of the surging area. Medvezhiy  
31 Glacier lies in the West Pamir Mountains, and its surging activity was extensively monitored  
32 in the 1960s–70s (Dolgoushin and Osipova, 1975). Medvezhiy Glacier has a wider

1 accumulation area at an elevation of 4600 to 5500 m, but the surges are confined to the 8-km  
2 long ice tongue in the narrow valley, separated by a steep ice fall that drops by 800 m per 1  
3 km (Dolgoushin and Osipova, 1975). Although the slope changes on Donjek Glacier are  
4 smaller, the significant valley constriction may generate a steep surface slope in the quiescent  
5 phase around the narrowing zone due to the mass transport from upstream (see the  
6 supplement). As such, the apparent regularity of the recurrence interval may be due to the  
7 rather steady flow speed upstream. Moreover, we consider that the surge is independent from  
8 the tributary's surge. This is because the interval of the tributary's surge is 36 years, which is  
9 much longer than that of the main stream's.

10 At Medvezhiy Glacier, the observed maximum speed exceeds 100 m/d, and the active phase  
11 initiates in winter, lasting about 3 months (Cuffey and Paterson, 2010). At Variegated Glacier,  
12 the surge also initiates from fall to winter and the maximum speed is 50 m/d during the 1982-  
13 1983 surge (Kamb et al., 1985). At Bering Glacier, a similar behavior (speed exceeding 10  
14 m/d, and winter initiation) is observed in the 2008-2011 surge (Burgess et al., 2012). The  
15 recurrence interval is about 18 years. Similar behavior has also been confirmed at Lowell  
16 Glacier (Bevington and Copland, 2014). These sudden speed-ups in fall-to-winter and rapid  
17 slow-downs in early summer are thought to arise from the hydrological regulation mechanism.  
18 The mechanism, which involves a destruction of tunnel-like channels and subsequent change  
19 into a linked-cavity system that increases the water pressure, has been proposed based on  
20 detailed observations of the 1982-1983 surge at Variegated Glacier (Kamb et al., 1985). Thus,  
21 such surges are often termed an Alaskan-type surge. Meanwhile, our observed maximum  
22 speed reached at most  $\sim 5$  m/d and we couldn't determine the initiation season. It is likely,  
23 however, that we have missed much higher speeds and winter initiation due to the coarse  
24 temporal resolution in our velocity data and difficulties for optical image matching caused by  
25 the lack of identifiable surface features when the glacier is snow-covered. The 12-year  
26 recurrence interval is apparently shorter than that in a Svalbard-type surge, whose cycle is  
27 thought to be 50 years or much longer (Murray et al., 2003; Jiskoot, 2011). Moreover, the  
28 active duration is much shorter than that of Svalbard-type, and the flow speed seems to have  
29 rapidly slowed down after the active phase. The observed multi-year acceleration may include  
30 small acceleration events or mini-surges that redistribute thickening and thinning (Raymond  
31 and Harrison, 1988; Harrison and Post, 2003) during the build-up phase. Thus, we consider  
32 that the surge phase of the two events is about 1 year, and that Donjek Glacier presumably has  
33 the Alaskan-type surge.

Based on these findings, we argue that the cyclic surging at Donjek Glacier occurs as follows. In the quiescent phase, ice delivered from the upstream area stores up at the highly narrowed area (Fig. 1a), causing local thickening. The ice thickening generates a steeper slope (Fig. S3) with a corresponding higher driving stress. When the ice thickness reaches a critical value, the glacier starts to speed-up. We do not claim, however, that this driving stress itself is high enough to initiate the surging; that is, the thickening of ice and steeper slope are not the direct cause of surging. Rather, thickened ice upstream is just a pre-condition prior to surging. But as the ice thickness increases, the volume of englacial water storage will also increase, which can supply a greater basal water flux and increase its pressure, thereby allowing the higher speed during the surging event (Lingle and Fatland, 2003; Abe and Furuya, 2015). During the surge, the inefficient subglacial drainage system and the sufficient englacial water volume can maintain higher velocity. After the mass re-distribution terminates, the thickness in the reservoir zone will again increase for the next event.

The next event of Donjek Glacier is likely to occur around 2025. To test the model proposed here, we need detailed observations of not only ice velocities but also the associated geometric and hydrological changes.

## Acknowledgements

Landsat images were downloaded from <http://earthexplorer.usgs.gov>. Glacier outlines were downloaded from the Randolph Glacier Inventory version 4.0 [http://www.glims.org/RGI/rgi40\\_dl.html](http://www.glims.org/RGI/rgi40_dl.html). We acknowledge JSPS-KAKENHI grant number 24651001 (M.F.) and Grant-in-Aid for JSPS Fellows (T.A.:15J01952 and D.S.:14J02632) for supporting this study. The comments from Luke Copland, and Dan Shugar were helpful to improve the original manuscript.

## References

- Abe, T., and Furuya, M.: Winter speed-up of quiescent surge-type glaciers in Yukon, Canada, *The Cryosphere*, 9, 1183-1190, doi:10.5194/tc-9-1183-2015, 2015.
- Bevington, A., and Copland, L.: Characteristics of the last five surges of Lowell Glacier, Yukon, Canada, since 1948, *J. Glaciol.*, 60, 113-123, 2014.

1 Burgess, E. W., Foster, R. R., and Larson C. F.: Flow velocities of Alaskan glaciers, Nat.  
2 Comms., 4, 2146, doi:10.1038/ncomms3146, 2013.

3 Burgess, E. W., Forster, R. R., Larsen, C. F., and Braun, M.: Surge dynamics on Bering  
4 Glacier, Alaska, in 2008–2011, *The Cryosphere*, 6, 1251-1262, doi:10.5194/tc-6-1251-2012,  
5 2012.

6 Clarke, G. K. C., and Holdsworth, G.: Glaciers of the St. Elias Mountains, in *Satellite Image*  
7 *Atlas of Glaciers of the World*, edited by: Williams, Jr., R. S. and Ferrigno, J. G., USGS  
8 Professional Paper 1386-J, USGS, Denver, Colorado, USA, J301-J327, 2002.

9 Clarke, G. K. C., and Matthews, W. H.: Estimates of the magnitude of glacier outburst floods  
10 from Lake Donjek, Yukon Territory, Canada. *Can. J. Earth Sci.*, 18, 1452-1463, 1981.

11 Cuffey, K. M., and Paterson, W. S. B.: *The Physics of Glaciers* 4th edition, Elsevier, Oxford,  
12 UK, 2010.

13 Dolgoushin, L. D., and Osipova, G. B.: Glacier surges and the problem of their forecasting,  
14 *Int. Assoc. Hydrol. Sci. Pub.* 104, 292–304, 1975.

15 Eisen, O., Harrison, W. D., and Raymond, C. F.: The surges of Variegated Glacier, Alaska,  
16 U.S.A., and their connection to climate and mass balance, *J. Glaciol.*, 47, 351-358, 2001.

17 Eisen, O., Harrison, W. D., Raymond, C. F., Echelmeyer, K. A., Bender, G. A., Gorda, J. L.  
18 D.: Variegated Glacier, Alaska, USA: a century of surges. *J. Glaciol.* 51, 399–406, 2005.

19 Fitch, A. J., Kadyrov, A., Christmas, W. J., and Kittler, J.: Orientation Correlation. in *British*  
20 *Machine Vision Conference*, Cardiff, UK, 133-142, 2002.

21 Frappé, T. -P., and Clarke, G. K. C.: Slow surge of Trapridge Glacier, Yukon Territory,  
22 Canada, *J. Geophys. Res.*, 112, F03S32, doi:10.1029/2006JF000607, 2007.

23 Harrison, W. D., and Post, A. S.: How much do we really know about glacier surging? *An.*  
24 *Glaciol.*, 36, 1-6, 2003.

25 Heid, T., and Kääb, A.: Evaluation of existing image matching methods for deriving glacier  
26 surface displacements globally from optical satellite imagery, *Remote Sens. Environ.*, 118,  
27 339–355, 10.1016/j.rse.2011.11.024, 2012.

28 Jiskoot, H.: Glacier surging, in *Encyclopedia of snow, ice and glaciers*, Springer, Dordrecht,  
29 The Netherlands, 2011.

1 Johnson, P. G.: A possible advanced hypsithermal position of the Donjek Glacier, Arctic, 25,  
2 302–305, 1972a.

3 Johnson, P. G.: The morphological effects of surges of the Donjek Glacier , St. Elias  
4 Moutains, Yukon Territory, Canada, *J. Glaciol.*, 11, 227-234, 1972b.

5 Kamb, B., Raymond, C. F., Harrison, W. D., Engelhardt, H., Echelmeyer, K. A., Humphrey,  
6 N., Brugman, M. M., and Pfeffer, T.: Glacier Surge Mechanism: 1982-1983 Surge of  
7 Variegated Glacier, Alaska, *Science*, 227, 469-477, 1985.

8 Larsen, C. F., Burgess, E., Arendt, A. A., O’Neel, S., Johnson, A. J., and Kienholz, C.:  
9 Surface melt dominates Alaska glacier mass balance, *Geophys. Res. Lett.*, 42, 5902-5908,  
10 doi:10.1002/2015GL064349, 2015.

11 Lingle, C. S., and Fatland, D. R.: Does englacial water storage drive temperate glacier surge?  
12 *Ann. Glaciol.*, 36, 14-20, 2003.

13 Luthcke, S. B., Sabaka, T. J., Loomis, B. D., Arendt, A. A., McCarthy, J.J., and Camp, J.:  
14 Antarctica, Greenland and Gulf of Alaska land-ice evolution from an iterated GRACE global  
15 mascon solution. *J. Glaciol.*, 59, 613–631, 2013.

16 McNabb, R. W., and Hock, R.: Alaska tidewater glacier terminus positions, 1948–2012, *J.*  
17 *Geophys. Res. Earth Surf.*, 119, 153–167 , 2014.

18 Meier, M. F., and Post, A.: What are glacier surges? *Can. J. Earth Sci.*, 6, 807–817, 1969.

19 Murray, T., Strozzi, T., Luckman, A., Jiskoot, H., and Christakos, P.: Is there a single surge  
20 mechanism? Contrasts in dynamics between glacier surges in Svalbard and other regions, *J.*  
21 *Geophys. Res.*, 108(B5), 2237, doi:10.1029/2002JB001906, 2003.

22 Post, A.: Distribution of surging glaciers in western North America. *J. Glaciol.*, 8, 229-240,  
23 1969.

24 Raymond, C. F.: How do glaciers surge? A review, *J. Geophys. Res.*, 92, B9, 9121-9134,  
25 1987.

26 Raymond, C. F., and Harrison, W. D.: Evolution of Variegated Glacier, Alaska, U.S.A., prior  
27 to its surge. *J. Glaciol.*, 34, 154-169, 1988.

Sakakibara, D., and Sugiyama, S.: Ice-front variations and speed changes of calving glaciers in the Southern Patagonia Icefield from 1984 to 2011, *J. Geophys. Res. Earth Surf.*, 119, 2541-2554, 2014.

Yasuda, T., and Furuya, M.: Dynamics of surge-type glaciers in West Kunlun Shan, Northwestern Tibet, *J. Geophys. Res. Earth Surf.*, 120, 2393-2405, 2015.

## **Figures and captions**

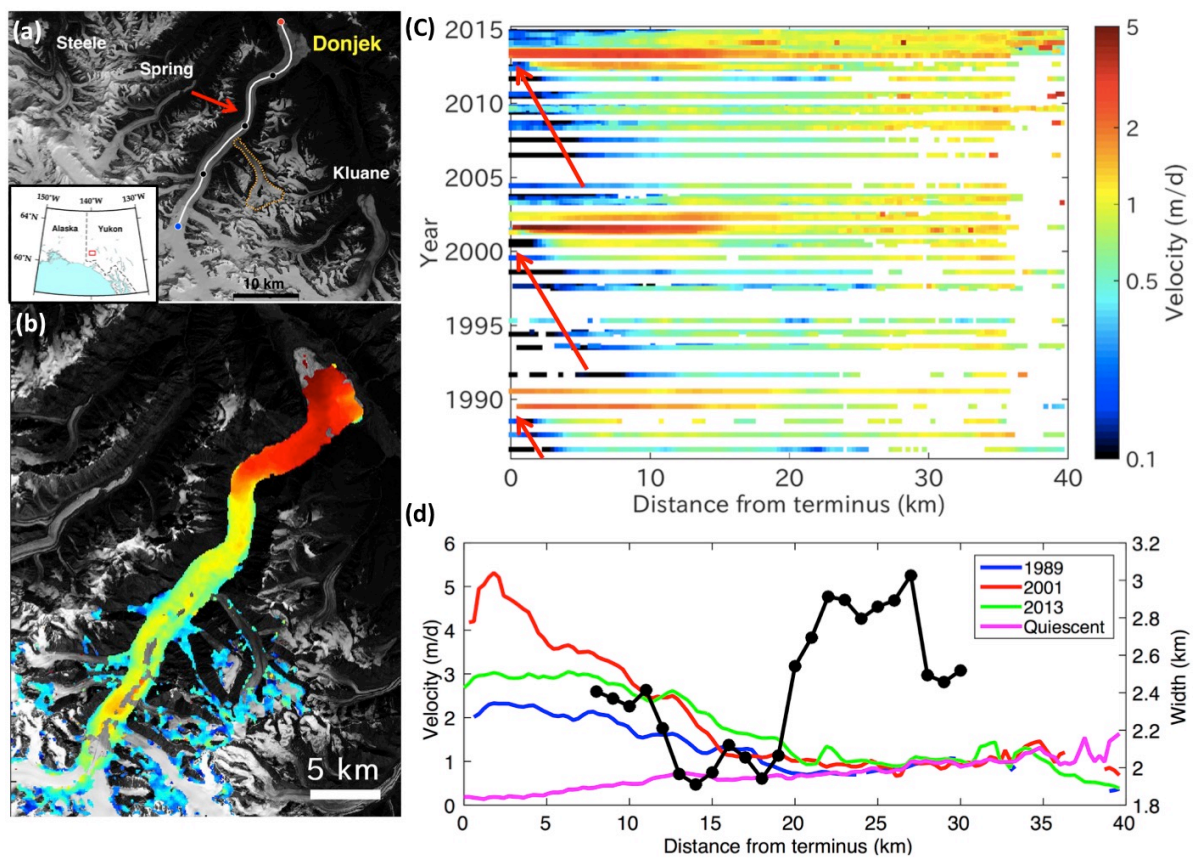


Figure 1. Glacier flow speeds and glacier extent. (a) Location of Donjek Glacier. Background is a Landsat 8 image acquired on 22 July 2014. White line is the flow-line used in (c) and (d). The red and blue dots show the start and end points, whereas the black dots mark 10-km intervals. The red arrow indicates a significantly narrower area of the valley and the dotted-orange curves outline the last tributary. (b) A sample ice-speed map derived from two images acquired on August and September, 2001. The color scale (logarithmic) is the same as that in

(c). (c) Spatial-temporal velocity evolution along the flow line in (a) from 1986 to 2014. The red arrows indicate the propagation of the velocity front. (d) The black line shows the change in the valley width between 8 and 30 km along the flow-line. The blue, red, and yellow-green lines show the ice velocity associated with surging episode in 1989, 2001, and 2003, respectively. The pink line is the averaged velocity between 2003 and 2011 (i.e., the quiescent phase).

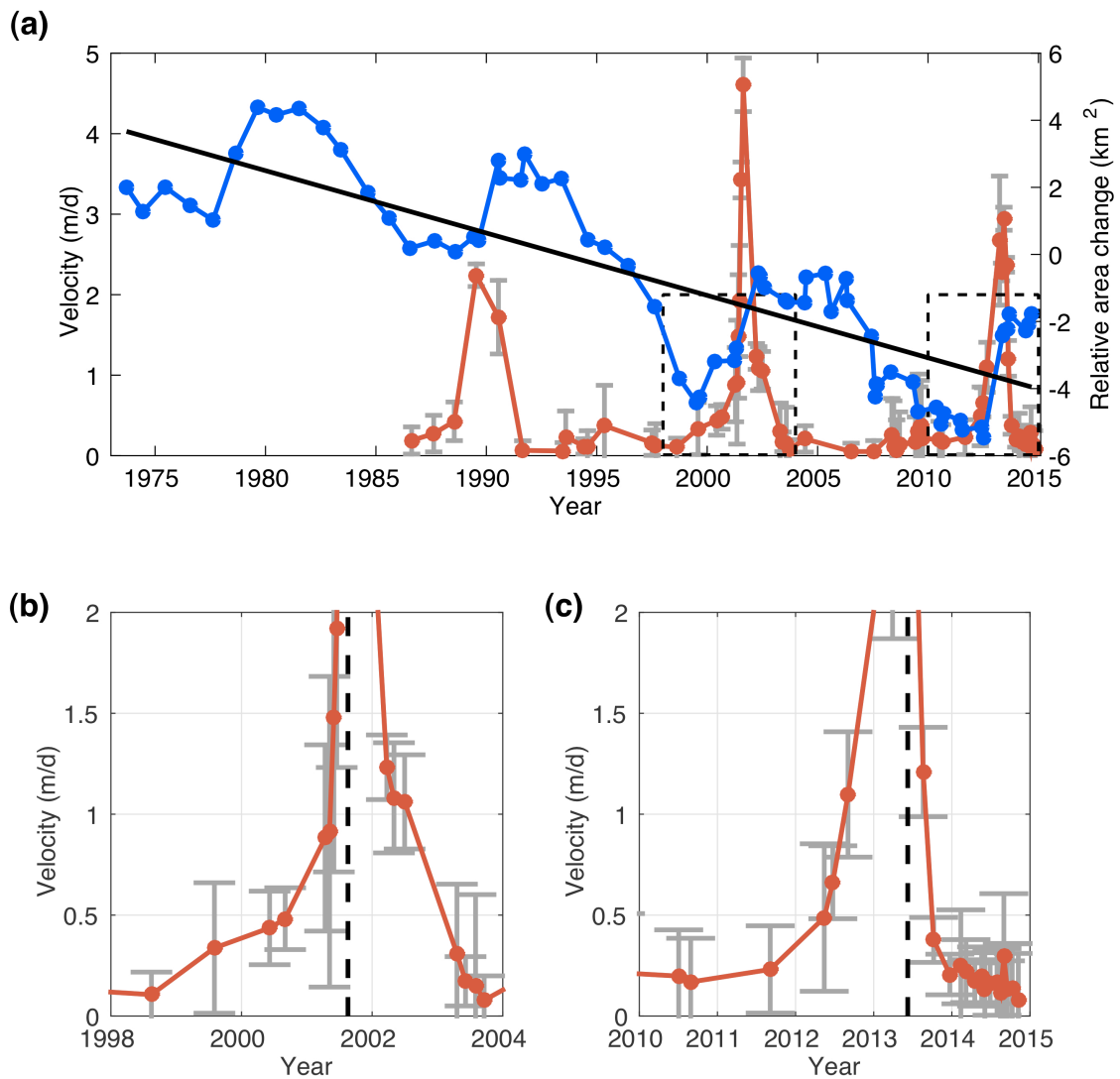




Figure 2. Ice speeds and area near the terminus. (a) Temporal changes of the ice speed (red) and the terminus area (blue). The ice speed data are averaged over the section between 0 and 5 km along the flow line shown in Fig. 1a. The error-bars indicate the mean speed in the non-glacial region. The black line indicates the long-term change of the terminus area. The dotted-line boxes mark the areas shown in (b) and (c). (b) Temporal change of the ice speed associated with the 2001 event. (c) Same as (b) except for the 2013 event. The black-dotted line marks the peak in ice speed during each event.

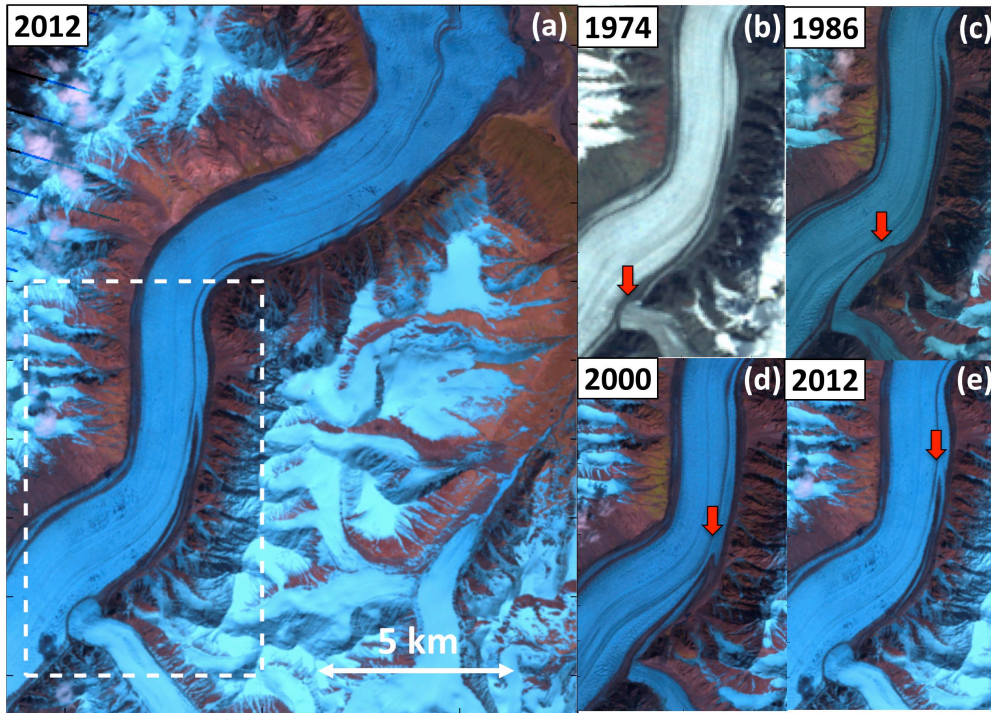


Figure 3. Spatial patterns of the looped moraines induced by the tributary surges shown in the Landsat images. (a) The near-terminus region of Donjek Glacier shown in Landsat 7 ETM+ false color composite image acquired on 6 June 2012. The white-dotted box shows the enlarged areas shown in (b)–(e). (b) Snapshot on 19 July 1974 of the moraine movements (red arrow) generated by the 1973–1974 tributary's surge. (c) Same as (b) except 25 July 1986. (d) Same as (b) except 7 July 2000. (e) Same as (b) except 6 June 2012.