

Modelled glacier dynamics over the last quarter of a century at Jakobshavn Isbræ

Ioana S. Muresan¹, Shfaqat A. Khan¹, Andy Aschwanden², Constantine Khroulev², Tonie Van Dam³, Jonathan Bamber⁴, Michiel R. van den Broeke⁵, Bert Wouters^{4,5}, Peter Kuipers Munneke⁵, and Kurt H. Kjær⁶

[1]{Department of Geodesy, DTU Space, Technical University of Denmark, Kgs. Lyngby, Denmark}

[2]{Geophysical Institute, University of Alaska Fairbanks, Fairbanks, Alaska, USA}

[3]{University of Luxembourg, Faculty of Science, Technology and Communication (FSTC), Research Unit of Engineering Sciences, Luxembourg}

[4]{University of Bristol, School of Geographical Sciences, Bristol, England}

[5]{Institute for Marine and Atmospheric research Utrecht (IMAU), Utrecht University, The Netherlands}

[6]{Centre for GeoGenetics, Natural History Museum of Denmark, University of Copenhagen, Copenhagen, Denmark}

Correspondence to: I. S. Muresan (iomur@space.dtu.dk)

Abstract

Observations over the past two decades show substantial ice loss associated with the speedup of marine terminating glaciers in Greenland. Here we use a regional 3-D outlet glacier model to simulate the behaviour of Jakobshavn Isbræ (JI) located in west Greenland. Our approach is to model and understand the recent behaviour of JI with a physical process-based model. Using atmospheric forcing and an ocean parametrization we tune our model to reproduce observed frontal changes of JI during 1990–2014. In our simulations, most of the JI retreat during 1990–2014 is driven by the ocean parametrization used, and the glacier's subsequent

response, which is largely governed by bed geometry. In general, the study shows significant progress in modelling the temporal variability of the flow at JI. Our results suggest that the overall variability in modelled horizontal velocities is a response to variations in terminus position. The model simulates two major accelerations that are consistent with observations of changes in glacier terminus. The first event occurred in 1998, and was triggered by a retreat of the front and moderate thinning of JI prior to 1998. The second event, which started in 2003 and peaked in the summer 2004, was triggered by the final breakup of the floating tongue. This breakup reduced the buttressing at the JI terminus that resulted in further thinning. As the terminus retreated over a reverse bed slope into deeper water, sustained high velocities over the last decade have been observed at JI. Our model provides evidence that the 1998 and 2003 flow accelerations are most likely initiated by the ocean parametrization used but JIs subsequent dynamic response was governed by its own bed geometry. We are unable to reproduce the observed 2010-2012 terminus retreat in our simulations. We attribute this limitation to either inaccuracies in basal topography or to misrepresentations of the climatic forcings that were applied. Nevertheless, the model is able to simulate the previously observed increase in mass loss through 2014.

1 Introduction

The rate of net ice mass loss from Greenland's marine terminating glaciers has more than doubled over the past two decades (Rignot et al., 2008; Moon et al., 2012, Shepherd et al., 2012, Enderlin et al., 2014). Jakobshavn Isbræ, located mid-way up on the west side of Greenland, is one of the largest outlet glaciers in terms of drainage area as it drains ~6 % of the Greenland Ice Sheet (GrIS) (Krabill et al., 2000). Due to its consistently high ice flow rate and seasonally varying flow speed and front position, the glacier has received much attention over the last two decades (Thomas et al., 2003; Luckman and Murray, 2005; Holland et al., 2008; Amundson et al., 2010; Khan et al., 2010; Motyka et al., 2011; Joughin et al., 2012; Gladish et al., 2015a; Gladish et al., 2015b; de Juan et al., 2010). Measurements from synthetic aperture radar suggest that the ice flow speed of JI doubled between 1992 and 2003 (Joughin et al., 2004). More recent measurements show a steady increase in the flow rate over the glacier's faster-moving region of ~ 5% per year (Joughin et al., 2008). The speedup coincides with thinning of up to 15 m a⁻¹ between 2003 and 2012 near the glacier front (Krabill et al., 2004; Nielsen et al., 2013) as observed from airborne laser altimeter surveys.

1 The steady increase in the flow rate and glacier thinning suggest a continuous dynamic
2 drawdown of mass, and they highlight JIs importance for the GrIS mass balance.

3 Over the past decade, we have seen significant improvements in the numerical modelling of
4 glaciers and ice sheets (e.g. Price et al., 2011; Vieli and Nick, 2011; Winkelmann et al., 2011;
5 Larour et al., 2012; Pattyn et al., 2012; Seroussi et al., 2012; Aschwanden et al., 2013; Nick et
6 al., 2013; Mengel and Levermann, 2014; Aschwanden et al., 2016) and several processes have
7 been identified as controlling the observed speedup of JI (Nick et al., 2009; Van der Veen et
8 al., 2011; Joughin et al., 2012). One process is a reduction in resistance (buttressing) at the
9 marine front through thinning and/or retreat of the glacier termini. But the details of the
10 processes triggering and controlling thinning and retreat remain elusive. Accurately modelling
11 complex interactions between thinning, retreat, and acceleration of flow speed as observed at
12 JI, is challenging. Our knowledge of the mechanisms triggering these events is usually
13 constrained to the period covered by observations. The initial speedup of JI occurred at a time
14 when the satellite and airborne observations were infrequent and therefore insufficient to
15 monitor the annual to seasonal evolution of glacier geometry and speed.

16 Here, we use a high-resolution, three-dimensional, time-dependent regional outlet glacier
17 model that has been developed as part of the Parallel Ice Sheet Model (PISM; see Sect. 2.1
18 Ice sheet model) (The PISM Authors, 2014) to investigate the dynamic evolution of JI
19 between 1990 and 2014. While previous 3-D modelling studies have mostly concentrated on
20 modelling individual processes using stress perturbations (e.g. Van der Veen et al., 2011,
21 Joughin et al. 2012), the present study aims to model the recent behaviour of JI with a
22 process-based model. Our modelling approach is based on a regional equilibrium simulation
23 and a time-integration over the period 1990 to 2014, in which the grounding lines and the
24 calving fronts are free to evolve under the applied ocean parametrization and monthly
25 atmospheric forcing.

26 **2 Methods and forcing**

27 **2.1 Ice sheet model**

28 The ice sheet model used in this study is the PISM (stable version 0.6). PISM is an open
29 source, parallel, three-dimensional, thermodynamically coupled, and time dependent ice sheet
30 model (Bueler and Brown, 2009; The PISM Authors, 2014). The model uses the superposition
31 of the non-sliding shallow ice approximation (SIA; Hutter, 1983) for simulating slowly

moving grounded ice in the interior part of the ice sheet and the shallow shelf approximation (SSA; Weis et al., 1999) for simulating fast-flowing outlet glaciers and ice shelf systems. We solve the SIA with a non-sliding base and use the SSA as a basal sliding velocity for the ice grounded regions (Winkelmann et al., 2011). This superposition of SIA and SSA (the “SIA+SSA” hybrid model) sustains a smooth transition between non-sliding, bedrock-frozen ice and sliding, fast-flowing ice and has been shown to reasonably simulate the flow of both grounded and floating ice (Winkelmann et al., 2011). To determine driving stresses for the SIA and SSA stress balances, PISM computes surface gradients according to Mahaffy (1976). For conservation of energy, we use an enthalpy scheme (Aschwanden et al., 2012) that accounts for changes in temperature in cold ice (i.e., ice below the pressure melting point) and for changes in water content in temperate ice (i.e., ice at the pressure melting point).

In PISM, the basal shear stress is related to the sliding velocity through a nearly-plastic power law (Schoof and Hindmarsh, 2010). The Mohr-Coulomb criterion (Cuffey and Paterson, 2010) is used to connect a saturated and pressurized subglacial till with a modelled distribution of yield stress. The yield stress depends on the effective pressure and on a spatially varying till friction angle derived heuristically as a piecewise-linear function of the bed elevation (Martin et al., 2011; Winkelmann et al., 2011; Aschwanden et al., 2013). The effective pressure on the till is determined by the ice overburden pressure and the effective thickness of water in the till (Tulaczyk et al., 2000a; Tulaczyk et al., 2000b). In this subglacial hydrology model the water is not conserved and it is only stored locally in the till up to a maximum thickness of 2 m. The ice flow therefore develops in PISM as a consequence of plastic till failure, i.e. where the basal shear stress exceeds the yield stress, and is influenced by the thermal regime and the volume of water at the ice sheet bed.

The underlying equations are further illustrated in the supplementary material (SI).

2.1.1 Input data

We use the bed topography from Bamber et al. (2013). This 1 km bed elevation dataset for all of Greenland was derived from a combination of multiple airborne ice thickness surveys and satellite-derived elevations during 1970–2012. The dataset has an increased resolution, along the ice sheet margin. In the region close to the outlet of JI, data from an 125 m CReSIS DEM (that includes all the data collected in the region by CReSIS between 1997 and 2007) have been used to improve the accuracy of the dataset. Errors in bed elevation range from 10 m to

300 m, depending on the distance from an observation and the variability of the local topography (Bamber et al., 2013). The terminus position and surface elevation in the Jakobshavn region are based on 1985 aerial photographs (Csatho et al., 2008). Ice thickness in the JI basin is computed as the difference between surface and bedrock elevation. The model of the geothermal flux is adopted from Shapiro and Ritzwoller (2004). We use monthly input fields of near-surface air temperature and surface mass balance (SMB) from the regional climate model RACMO2.3 (Noël et al., 2015; Figs. S2 and S3), which here represent the only seasonal input used in the model. The version used in this study is produced at a spatial resolution of ~ 11 km and covers the period from 1958 to 2014. Additional grid refinements are performed using bilinear interpolation for climatic datasets and a second order conservative remapping scheme (Jones, 1999) for bed topography data.

2.1.2 Initialization procedure, boundary conditions, calving and grounding line parametrization

In our model, the three-dimensional ice enthalpy field, basal melt for grounded ice, modelled amount of till-pore water, and lithospheric temperature are obtained from an ice-sheet-wide paleo-climatic spin-up. The paleo-climatic spin-up follows the initialization procedure described by Bindschadler et al. (2013) and Aschwanden et al. (2013). We start the spin-up on a 10 km grid, and then we further refine to 5 km at -5ka. It is important to note that during the paleo-climatic initialization the terminus is held fixed to the observed 1990 position in the JI region and to the position from Bamber et al. (2013) elsewhere.

In the regional outlet glacier model of PISM, the boundary conditions are handled in a 10 km strip positioned outside of the JI's drainage basin and around the edge of the computational domain (Fig. 1B). In this strip, the input values of the basal melt, the amount of till-pore water, ice enthalpy, and lithospheric temperature (Aschwanden et al., 2013) are held fixed and applied as Dirichlet boundary conditions in the conservation of energy model (The PISM Authors, 2014). The boundary conditions for the enthalpy at the ice-bedrock interface follow Aschwanden et al (2012). We start our regional JI runs with an equilibrium simulation on a horizontal grid with 5 km spacing. The enthalpy formulation models the mass and energy balance for the three-dimensional ice fluid field based on 200 regularly spaced ice layers within a domain extending 4000 m above the bed elevation. The temperature of the bedrock thermal layer is computed up to a depth of 1000 m with 50 regularly spaced layers. The first step is to obtain a 5 km regional equilibrium model for JI using constant mean climate (i.e.

repeating the 1960-1990 mean air temperature and SMB; see Sect. 2.1.1). We consider that equilibrium has been established when the ice volume in the regional domain changes by less than 1% in the final 100 model years. Grid refinements are made from 5 km (125×86) to 2 km (310×213) after 3000 years. The 2 km simulation reaches equilibrium after 200 years with an ice volume of $0.25 \cdot 10^6 \text{ km}^3$ (or a 3.6% increase relative to the input dataset from Bamber et al. (2013)). Further, using our equilibrium simulations with a 2 km horizontal grid and 400 regularly spaced ice layers within a domain extending 4000 m above the bed elevation, we simulate forward in time (hindcast) from 1990 to 2014 by imposing monthly fields of SMB and 2 m air temperatures through a one-way forcing scheme. For simulations performed on a 1 km horizontal grid, the exact same procedure is used with the additional constraint that in the regional equilibrium run a further grid refinement from 2 km to 1 km is made after 200 years. The length of the 1 km regional equilibrium simulation is 100 years.

In our regional model, all boundaries (calving fronts, grounding lines, upper, and lower surfaces) are free to evolve in time both during the regional equilibrium and the forward simulations. Along the ice shelf calving front, we superimpose a physically based calving (eigen calving) parametrization (Winkelmann et al., 2011; Levermann et al., 2012) and a basic calving mechanism (Albrecht et al., 2011) that removes any floating ice at the calving front thinner than a given threshold at a maximum rate of one grid cell per time step. The average calving rate (c) is calculated as the product of the principal components of the horizontal strain rates ($\dot{\epsilon}_{\pm}$), derived from the SSA velocities, and a proportionality constant parameter (k) that captures the material properties relevant for calving:

$$c = k \dot{\epsilon}_{+} \dot{\epsilon}_{-} \quad \text{for } \dot{\epsilon}_{\pm} > 0. \quad (1)$$

The strain rate pattern is strongly influenced by the geometry and the boundary conditions at the ice shelf front (Levermann et al. (2012)). The proportionality constant, k , is chosen such that the ice front variability is small (Leverman et. al., 2012). This physically based calving law appears to yield realistic calving front positions for various types of ice shelves having been successfully used for modelling calving front positions in entire Antarctica simulations (Martin et al., 2011) and regional east Antarctica simulations (Mengel and Levermann, 2014). In contrast to Antarctica, known for its large shelves and shallow fjords, the GrIS is characterized by narrow and deep fjords, and JI is no exception. The strain rate pattern in the eigen calving parametrization performs well only if fractures in glacier ice can grow, and calving occurs only if these rifts intersect (i.e. possible only for relatively thin and unconfined

ice shelves). In the case of JI, whose terminus is confined in a narrow fjord, the strain rate pattern that defines the eigen calving parametrization is not the governing process and therefore the need for the second calving parametrization. In our model, the eigen calving law has priority over the basic calving mechanism. That is to say that the second calving law used (the basic calving mechanism) removes any ice at the calving front not calved by the eigen calving parametrization thinner than 500 m in the equilibrium simulations and 375 m in the forward runs. Therefore, the creation of the conditions under which calving can occur (e.g. a floating ice shelf) with the subsequent calving mechanism, relies solely on the parametrization for ice shelf melting (Sect. 2.1.3).

A partially-filled grid cell formulation (Albrecht et al., 2011), which allows for sub-grid scale retreat and advance of the ice shelf front, is used to connect the calving rate computed by the calving parametrizations with the mass transport scheme at the ice shelf terminus. This sub-grid scale retreat and advance of the shelf allows for realistic spreading rates that are important for the eigen calving parametrization. The sub-grid interpolation is performed only when a floating terminus exists. In both situations (i.e., floating ice or grounded terminus), the stress boundary conditions are applied at the calving front and in the discretization of the SSA equations (Winkelmann et al., 2011). The retreat and advance of the front through calving is restricted to at most one grid cell length per adaptive time step.

The parameterization of the grounding line position is based on a linear interpolation scheme (the “LI” parameterization; Gladstone et al., 2010) extended to two horizontal dimensions (x, y) and is not subject to any boundary conditions. This sub-grid treatment of the grounding line interpolates the basal shear stress in x, y based on the spatial gradient between cells below and above the grounding line and allows for a smooth transition of the basal friction from grounded to floating ice (Feldmann et al., 2014). At each time step the grounding line position is determined by a mask that distinguishes between grounded and floating ice using a flotation criterion based on the modelled ice thickness (Winkelmann et al., 2011):

$$b(x, y) = -\frac{\rho_i}{\rho_o} H(x, y) \quad (2)$$

where b represents the bedrock elevation, ρ_i is the density of the ice, ρ_o is the density of the ocean water and H represents the ice thickness. Therefore, the grounding line migration is influenced by the ice thickness evolution, which further depends on the velocities computed from the stress balance. The superposition of SIA and SSA, which implies that the SSA

1 velocities are computed simultaneously for the shelf and for the sheet, ensures that the stress
2 transmission across the grounding line is continuous and that buttressing effects are included.
3 In the three-dimensional Marine Ice Sheet Model Intercomparison Project (Mismip3d), PISM
4 was used to model reversible grounding line dynamics and produced results consistent with
5 full-Stokes models (Pattyn et al. (2013); Feldmann et al., 2014; see parameters therein). We
6 have not performed the Mismip3d experiments for our particular parameter settings and,
7 therefore, the accuracy of the modelled grounding line migration is solely based on the results
8 presented in Feldmann et al. (2014).

9 **2.1.3 Parameterization for ice shelf melting**

10 We use a simple parametrization for ice shelf melting where the melting effect of the ocean is
11 based on both sub-shelf ocean temperature and salinity (Martin et al., 2011). To accommodate
12 this parametrization, several changes have been made to PISM at the sub-shelf boundary
13 (Winkelmann et al., 2011). First, the ice temperature at the base of the shelf (the pressure-
14 melting temperature) necessary for the enthalpy solver (Aschwanden et al., 2012) is
15 calculated from the Clausius-Clapeyron gradient and the elevation at the base of the shelf.
16 The ice temperature is then applied as a Dirichlet boundary condition in the conservation of
17 energy equation.

18 Secondly, basal melting and refreezing is incorporated through a sub-shelf mass flux used as a
19 sink/source term in the mass-continuity equation. This mass flux from shelf to ocean
20 (Beckmann and Goosse, 2003) is computed as a heat flux between the ocean and ice and
21 represents the melting effect of the ocean due to both temperature and salinity (Martin et al.,
22 2011).

23 In our simulations we use a constant ocean water temperature (T_o) of -1.7 °C, which here
24 represents the mean surface ocean temperature in the grid cells adjacent to the JI terminus. In
25 the heat flux parametrization, the ocean temperature at the ice shelf base is computed as the
26 difference between the input ocean temperature and a virtual temperature that represents the
27 freezing point temperature of ocean water below the ice shelf (Fig. S4). The freezing point
28 temperature is calculated based on the elevation at the base of the shelf and the ocean water
29 salinity. As a consequence of these constraints, as the glacier retreats and/or advances, both
30 the pressure-melting temperature and the heat flux between the ocean and ice evolve
31 alongside the modelled glacier ice shelf geometry. The ocean water salinity ($S_o = 35$ psu) is

kept constant in time and space as the model does not capture the salinity gradient from the base of the ice shelf through layers of low and high salinity. A previous study conducted by Mengel and Levermann (2014) using the same model established that the sensitivity of the melt rate to salinity is negligible.

Following for this melting parametrization, the highest melt rates are modelled in the proximity of the glacier grounding lines and decrease with elevation such that the lowest melt rates are closer to the central to frontal area of the modelled ice shelf. At the grounding line, PISM computes an extra flotation mask that accounts for the fraction of the cell that is grounded, by assigning 0 to cells with fully grounded ice, 1 for cells with ice-free or fully floating ice, and values between 0 and 1 for partially grounded grid cells. The basal melt rate in the cells containing the grounding line is then adjusted based on this flotation mask as following (The PISM Authors, 2014):

$$M_{b,adjusted} = \lambda M_{b,grounded} + (1 - \lambda) M_{b,shelf-base} \quad (3)$$

where M_b refers to the basal melt rate and λ is the value of the flotation mask. At the vertical ice front, we do not apply any melt.

3 Results and discussion

This section is organized in two main subsections. Sect. 3.1 introduces the results obtained relative to observations, and Sect 3.2 focuses mainly on the limitations of the model that need to be considered before a final conclusion can be drawn. A short introduction to the different simulations and preparatory experiments performed is given below.

A total number of fifty simulations with different sets of parameters (excluding preparatory and additional experiments on the 1 km grid) are performed on a 2 km grid. We alter six parameters that control the ice dynamics (e.g. the flow enhancement factor, the exponent of the pseudo-plastic basal resistance model, the till effective fraction overburden, etc.) , the ice shelf melt, the ocean temperature, and the calving (i.e. the ice thickness threshold in the basic calving mechanism). These parameters are modified only during the regional JI runs such that the model reproduces the frontal positions and the ice mass change observations at JI during the period 1990-2014 (Fig. 2) and 1997-2014 (Figs. 3 and 4), respectively. From these results, we present the parameterization that best captures (i.e., we estimate the residual between modelled and observed ice mass change and select the smallest residual signal) the full observed evolution of JI during the period 1990–2014 (Figs. 2, 3, 4 and 5). The values of the

ice sheet model parameters used and the ice sheet model sensitivity to parameters controlling ice dynamics, basal processes, ice shelf melt, and ocean temperature, are further illustrated in the SI.

3.1 Observations vs. modelling results

3.1.1. Annual scale variations in velocities, terminus and grounding line positions

We investigate the processes driving the dynamic evolution of JI and its variation in velocity between 1990 and 2014 with a focus on the initial speedup of JI (1990) and the 2003 breakup of the ice tongue. The overall results from our simulations suggest a gradual increase in velocities that agree well with observations (Joughin et al., 2014) (Fig. 3). Three distinct stages of acceleration are identified in Fig. 3 (see also Movie 1 in the SI) and discussed in detail below.

- **1990–1997**

The first speedup produced by the simulation is caused by a retreat of the front position by approximately 2 to 4 km between 1990 and 1991. There is no observational evidence to confirm that this retreat actually occurred. The simulated retreat is probably a modelling artefact as the geometry obtained during the regional equilibrium simulation is forced with monthly atmospheric forcing and new oceanic conditions. This simulated acceleration (Fig. 3) is caused in our model by a reduction in buttressing due to a reduction in lateral resistance (Van der Veen et al., 2011), which is generated by the gradual retreat of the front and which triggers a dynamic response in the upstream region of JI.

Starting in 1992, the modelled and observed terminus positions agree (not shown in Fig. 2). Apart from the acceleration in 1991–1992, no significant seasonal fluctuations in flow rate are found in our simulations for this period, a result that is consistent with observations (Echelmeyer et al., 1994). From 1993 a stronger sub-annual velocity signal begins to emerge in our simulation that continues and intensifies in magnitude during 1994 and 1995. Modelled mean-annual velocities for 1992 and 1995 are consistent with observed velocities for the same period (Joughin et al., 2008; Vieli et al., 2011). In 1996 and 1997, the frontal extent and the grounding line position remain relatively stable (Figs. 2, 6 and 7), and no

significant seasonal fluctuation in ice flow rate is observed in the simulation. These model results agree well with observations, which indicate that the glacier speed was relatively constant during this period (Luckman and Murray, 2005).

- **1998–2002**

According to observations (Joughin et al., 2004; Luckman and Murray, 2005; Motyka et al., 2011; Bevan et al., 2012), the initial acceleration of JI occurred in May-August 1998, which coincides with our modelled results. In our simulation, the 1998 acceleration is generated by a retreat of the ice tongue's terminus in 1997-1998, which may be responsible for reducing buttressing (Fig. 7 and Movie 1 in the SI). Thinning, both near the terminus and inland (up to 10 km away from the 1990 front position), starts in our model in the summer of 1995 and continues to accelerate after 1998 (Figs. 3, 6 and 7). The modelled behaviour agrees well with the observed behaviour (Krabill et al., 2004). Although thinning appears to have increased in our model during three continuous years, it produced only minor additional speedup during the period prior to 1998 (Figs. 2, 6, and 7). In our simulation, JI's speed increased in the summer of 1998 by ~ 80% relative to the summer of 1992 (Fig. 3), at which time the grounding line position starts to retreat thereafter (Figs. 2, 6, and 7). Observations (Luckman and Murray, 2005) do not show this level of speedup, and there are no observations of the grounding line position at this time with which to assess our model performance. Overall, modelling results suggest an advance of the terminus between 1999 and 2000 and a retreat of the southern tributary between 2000 and 2002 by ~4 km, which correlates with existing observations (Thomas, 2004). In our simulation, this retreat of the terminus triggers a decrease of resistive stresses at the terminus (Figs. 7 and S8). Concurrent with the 1998-2002 terminus retreat, the grounding line retreats in our model by ~6 km (Figs. 2, 6 and 7).

- **2003–2014**

In the late summer of 2003, the simulated flow velocity increases (Fig. 3). This acceleration of JI is driven in our simulations by the final breakup of the ice tongue (see Figs. 2 and 6). The period 2002-2003 is characterized in our model by

substantial retreat of the front ($\sim 4\text{--}6$ km) and the grounding line (~ 4 km), which starts in June 2002 and continues throughout 2003. The simulated retreat that occurred in 2003 and the loss of large parts of the floating tongue (Figs. 2 and 6) caused a major decrease in resistive stresses near the terminus (Figs. 7 and S8). By 2004, the glacier had thinned significantly (Figs. 3 and 6) both near the front and further inland in response to a change in the near-terminus stress field (Fig. 7). During the final breakup of the ice tongue, the simulation produces speeds high as 20 km a^{-1} ($\sim 120\%$ increase relative to 1998). The modelled velocities decreased to 16 km a^{-1} ($\sim 80\%$ increase relative to 1998) in the subsequent months and remained substantially higher than the sparse observations from that time (e.g. Joughin et al., 2012). The high velocities modelled at JI after the loss of its floating tongue are further sustained in our simulation by the thinning that occurred after 2003 (Fig. 3), which continues to steepen the slopes near the terminus (Fig. 6), and is accompanied by a seasonal driven (sub-annual scale) retreat and advance of the front. This simulated thinning is combined in the following years with a reduction in surface mass balance due to increased melting and runoff (van den Broeke et al., 2009; Enderlin et al., 2014, Khan et al., 2014). The period 2004–2014 is characterized in our simulation by relatively uniform velocity peaks with strong sub-annual variations (Fig. 3). During this period, only a small floating ice tongue is modelled and the terminus remained relatively stable, with no episodes of significant retreat.

In agreement with previous studies (e.g. Joughin et al. 2012), our results suggest that the overall variability in the modelled horizontal velocities is a response to variations in terminus position (Fig. 7). In our simulation, the retreat of the front reduced the buttressing at the terminus and generated a dynamic response in the upstream region of JI which finally led to flow acceleration. In contrast, when the front advanced the modelled flow slowed as the resistive stresses at the terminus were reinforced. This buttressing effect tends to govern JI's behaviour in our model. Regarding the overall terminus retreat, our simulations suggest that it is mostly driven by the sub-shelf melting parametrization applied (Figs. S5 and S14). Although the heat flux supplied to the shelf evolves in time based on the modelled terminus geometry, the input ocean temperature is kept constant throughout the simulations. This constant ocean forcing at the terminus leads, in our simulation, to gradual thinning of JI and favours its retreat without any shift (e.g. increase) in ocean temperature. In terms of seasonality, the only seasonal input into the model is introduced by the monthly atmospheric

forcing that is applied (Sect. 2.1.1). In our model, the atmospheric forcing that is applied (Figs. S2 and S3) can influence JI's dynamics through changes in surface mass balance (SMB) (i.e., accumulation and ablation), which affects both the SIA and the SSA (Sect. 2.1). However, the modelled sub-annual variability in terms of terminus retreat and velocities does not always follow the seasonal signal (Fig. 3). We investigate this higher than seasonal variability in Sect. 3.2.

3.1.2 Ice mass change

Figure 4 shows observed and modelled mass change for the period 1997 to 2014. We estimate the observed rate of ice volume changes from airborne and satellite altimetry over the same period and convert these to rates of mass change (SI, Sect. 2). Overall we find good agreement between modelled and observed mass change (Fig. 4), and our results are in agreement with other similar studies (Howat et al., 2011; Nick et al., 2013). Dynamically driven discharge is known to control Jakobshavn's mass loss between 2000 and 2010 (Nick et al., 2013). The modelled cumulative mass loss is 269 Gt, of which 93% (~251 Gt) is dynamic in origin while the remaining 7% (~18 Gt) is attributed to a decrease in SMB (Fig. 4). Further, the present-day unloading of ice causes the Earth to respond elastically. Thus, we can use modelled mass changes to predict elastic uplift. We compare modelled changes of the Earth's elastic response to changes in ice mass to uplift observed at four GPS sites (Fig. 5). Both model predictions and observations consistently suggest large uplift rates near the JI front (20 mm a⁻¹ for station KAGA) and somewhat minor uplift rates (~ 5 mm a⁻¹) at distances of >100 km from the ice margin.

Although the terminus has ceased to retreat in our simulations after 2009 (Figs. 6 and 7), the modelled mass loss, and more importantly the dynamic mass loss, continues to accelerate (Fig. 4). Our results show (Fig. 7) that during this period the mass change is mostly driven by the sub-annual terminus retreat and advance, which continues to generate dynamic changes at JI through seasonal (sub-annual scale) reductions in resistive stresses.

3.2 Feedback mechanisms, forcings and limitations

Representing the processes that act at the marine boundary (i.e. calving and ocean melt) are important for understanding and modelling the retreat/advance of marine terminating glaciers like JI. Determining terminus positions by using the superposition of a physically based calving (eigencalving) parametrization (Winkelmann et al., 2011; Levermann et al., 2012) and

1 a basic calving mechanism (Albrecht et al., 2011) is motivated by the model's ability to
2 maintain realistic calving front positions (Levermann et al., 2012). The eigen calving
3 parametrization cannot resolve individual calving events, and, thus, the introduction of the
4 basic calving mechanism was necessary in order to accurately match observed front positions.
5 Preparatory experiments have shown that calving is mostly driven in our model by the basic
6 calving mechanism used ($\sim 96\%$ of the overall mass loss), and that the eigen calving
7 parametrization is more important in modelling sub-annual to seasonal fluctuations of the
8 terminus. Our simulations suggest that the superposition of these two calving mechanisms
9 performs well for relatively narrow and deep fjords as those characterized by JI (Fig. 2). The
10 benefit of using such a combination of calving laws is that it can evolve the terminus position
11 with time and thus calving feedbacks are not ignored. As the terminus retreats, the feedback
12 between calving and retreat generates dynamic changes due to a reduction in lateral shear and
13 resistive stresses (Fig. 7). In a simulation in which the terminus position is kept fixed to the
14 1990s position, the velocity peaks are uniform (i.e. no acceleration is modelled except for
15 some small seasonal related fluctuations generated by the atmospheric forcing applied), and
16 the mass loss remains relatively small (~ 70 Gt). Consistent with Vieli et al. (2011), we find
17 that the feedback between calving and retreat is highly important in modelling JI's dynamics.

18 As introduced in Sect. 2, our approach here is to adjust the terminus in the JI region to
19 simulate the 1990s observed front position and surface elevation based on 1985 aerial
20 photographs (Csatho et al., 2008). The glacier terminus in 1990s was floating (Csatho et al.,
21 2008; Motyka et al. 2011). Motyka et al. (2011) calculated the 1985 hydrostatic equilibrium
22 thickness of the south branch floating tongue from smoothed surface DEMs and obtained a
23 height of 600 m near the calving front and 940 m near the grounding zone. In this paper,
24 however, we compute the thickness as the difference between the surface elevation and the
25 bed topography, and allow the glacier to evolve its own terminus geometry during the
26 equilibrium simulation. Preparatory experiments have shown that in our model (disregarding
27 its initial geometry floating/ grounded terminus) JI attains equilibrium with a grounding line
28 position that stabilizes close to the 1990s observed terminus position. According to
29 observations, JI is characterized in 1990 by a large floating tongue (> 10 km; e.g. Motyka et
30 al., 2011) that we are not able to simulate during the equilibrium runs. In our model (Figs. 6
31 and 7), the glacier starts to develop a large floating tongue (~ 10 km) in 1999. Starting in
32 2000, the floating tongue is comparable in length and thickness with observations and the
33 model is able to simulate, with a high degree of accuracy, its breakup that occurred in late

summer 2003 and the subsequent glacier acceleration. Observations of terminus positions (Sohn et al., 1998; Csatho et al., 2008) suggest that over more than 40 years, between 1946 and 1992, JIs terminus stabilized in the proximity of the 1990's observed terminus position. Furthermore, during 1959 and 1985 the southern tributary was in balance (Csatho et al., 2008). This suggests that, during the regional equilibrium and at the beginning of the forward simulations, we are forcing our model with climatic conditions that favoured the glacier to remain in balance. This may explain our unsuccessful attempts to simulate prior to 1998 a floating tongue comparable in length and thickness with observations, and suggests that for simulating the large floating tongue that characterized JI during this period, future studies should consider to start modelling JI before the glacier begins to float in the late 1940s (Csatho et al., 2008).

The geometry of the terminus plays an important role in parameterizing ice shelf melting, and therefore our pre-1999 geometry will influence the magnitude of the basal melt rates (Sect. 2.1.3). The difference in geometry results in modelled mean basal melt rates that are larger for the period 1999-2003 (Table S3), when JI begins to develop a large floating tongue and when the calving front was already largely floating. The modelled mean melt rates for the period 1999-2003 are large and likely overestimated. Relative to other studies, e.g. Motyka et al. (2011), our yearly mean melt rate for 1998 is ~2 times larger (Table S3). While we choose here to compare the two melt rates in order to offer a scale perspective, we acknowledge the difference in geometry between the two studies.

Starting in 2010, the retreat of the terminus modelled in our simulations did not correlate well with observations (Fig. 2). The observed terminus and the grounding line retreats do not cease after 2010. Further, observed front positions (Joughin et al., 2014) suggest that by the summer 2010 JI was already retreating over the sill and on the over deepening indicated by the red star in Fig. 6. The observed retreat is not reproduced in our simulations suggesting that additional feedbacks and/or forcings most likely affect the glacier. Alternatively, the mismatch between observations and simulation results may represent an incomplete modelling of the physics, inaccuracies in atmospheric/oceanic conditions, or other various limitations (e.g., bed topography model constraints and grid resolution issues). The particular influence of these potential issues on our model is detailed below.

The basal topography of JIs channels represents a large source of uncertainty. JI is a marine terminating glacier whose bedrock topography is characterized by a long and narrow channel

1 with deep troughs that contribute to its retreat and acceleration, e.g. once the grounding line
2 starts to retreat on a down-sloping bed, the flow increases, leading to further retreat and
3 acceleration (Vieli et al., 2011). The timing and the magnitude of these retreats depend on bed
4 topography and the glacier width changes (Jamieson et al., 2012; Enderlin et al., 2013).
5 Accurate modelling of the grounding line behaviour is, therefore, crucial for JIs dynamics as
6 its retreat removes areas of flow resistance at the base and may trigger unstable retreat if the
7 glacier is retreating into deeper waters. In our simulation, the grounding line position
8 stabilizes downstream of the sill after 2005 (Figs. 2 and 6), which is in accordance with
9 previous modelling studies (Vieli et al., 2001; Vieli et al., 2011). Vieli et al. (2011) found
10 that, by artificially lowering the same bed sill by 100 m, the grounding line eventually retreats
11 and triggers a catastrophic retreat of 80 km in just over 20 years. In an equivalent experiment
12 with Vieli et al. (2011) but performed with our model, lowering the bed sill by 100 m, did not
13 result in a retreat of the grounding line over the sill. Regarding the grid resolution, simulations
14 performed on a 1 km grid did not improve our simulations of ice thickness (Fig. S10) or
15 surface speed (i.e. trend, overall magnitude, and shape of the flow; Fig. S11).

16 From a climatic perspective, the summer of 2012 was characterized by exceptional surface
17 melt covering 98% of the entire ice sheet surface and including the high elevation Summit
18 region (Nghiem et al., 2012; Hanna et al., 2014). Overall, the 2012 melt-season was two
19 months longer than the 1979–2011 mean and the longest recorded in the satellite era (Tedesco
20 et al., 2013). Furthermore, the summer of 2012 was preceded by a series of warm summers
21 (2007, 2008, 2010 and 2011) (Hanna et al., 2014). Surface melt above average was already
22 recorded in May-June 2012 (see Fig. 3 from NSIDC (2015)) when most of the 2011-2012
23 winter accumulation melted and over 30% of the ice sheet surface experienced surface melt.
24 An intense and long melt year leads to extensive thinning of the ice and has the potential to
25 enhance hydrofracturing of the calving front due to melt water draining into surface crevasses
26 (MacAyeal et al., 2003; Joughin et al., 2013; Pollard et al., 2015) resulting in greater and/or
27 faster seasonal retreat and an increase in submarine melt at the terminus and the sub-shelf
28 cavity (Schoof, 2007; Stanley et al., 2011; Kimura et al., 2014; Slater et al., 2015).

29 The seasonal retreat of JIs terminus started relatively early in 2012, with a large calving event
30 having already occurred in June. While it seems difficult to attribute this particular calving
31 event solely to processes related to the 2012 melt season, it does seem probable that the series
32 of warm summers (2007-2011) together with the 2012 exceptional melt season could have

1 enhanced hydrofracturing of the calving front. In turn, this could have induced a retreat of the
2 terminus that cannot be captured by our model (i.e., in its present configuration the model
3 cannot account directly for the influence of meltwater runoff and its role in the subglacial
4 system during surface melt events). On the other hand, changes in ice thickness affect both
5 the SIA and the SSA (Sect. 2.1). While the effect on the SIA is very weak as the driving
6 stresses are not affected by a few meters of difference in thickness induced by SMB
7 variability, in the SSA, the coupling is achieved via the effective pressure term in the
8 definition of the yield stress (see SI, Sect. 1.2 for detailed equations). The effective pressure
9 is determined by the ice overburden pressure (i.e., ice thickness) and the effective thickness of
10 water in the till, where the latter is computed by time-integrating the basal melt rate.
11 Compared with SIA, this effect is stronger and may explain why in our model some seasonal
12 velocity peaks could potentially be influenced by the atmospheric forcing applied (Figs. S9
13 and S14).

14 We study the sensitivity of the model to atmospheric forcing by performing a simulation
15 where we keep the atmospheric forcing constant (mean 1960-1990 temperature and SMB). By
16 comparing this simulation with a simulation that includes full atmospheric variability
17 (monthly temperature and SMB) we find that to only a relatively small degree some of the
18 variability appears to be influenced by the atmospheric forcing applied (Figs. S2 and S14),
19 which also represents the only seasonal input into the model. Some of the greater than
20 seasonal frequency could be an issue with resolution in the model. We examined this
21 sensitivity by performing additional runs at a higher spatial resolution. Simulations on a 1 km
22 grid did show some improvement with respect to surface speed sub-annual variability (Fig.
23 S12), suggesting that in our model the stress redistribution might be sensitive to the resolution
24 of the calving event. However, given the short period spanned by the simulations, the stress
25 redistribution does not change the overall modelled results, as seen in Figs. S10 and S11.
26 Although we acknowledge that some of the variability is due to the grid resolution, part of it
27 may also be related to unmodeled physical processes acting at the terminus. We suggest that
28 additional contributions to the seasonality, e.g. from ice mélange or seasonal ocean
29 temperature variability, which are not included in our model could potentially influence the
30 advance and retreat of the front at seasonal scales (Fig. S14). For example, the ice mélange
31 can prevent the ice at the calving front from breaking off and could therefore reduce the
32 calving rates. Consequently, the introduction of an ice mélange parametrization will probably
33 help to minimize some of the sub-annual signal modelled in our simulations. Similarly,

seasonal ocean temperature variability can influence ice mélange formation and/or clearance and the melt rates at the glacier front and can accentuate seasonal glacier terminus and grounding line retreat and/or advance. However, at this point we find it difficult to determine the relative importance of each process.

Finally, regarding the ocean conditions, warm water temperatures in the fjord were recorded in 2012. Besides a cold anomaly in 2010, which was sustained until early 2011, the period 2008-2013 is characterized by high fjord waters temperatures - equal to or warmer than those recorded in 1998-1999 (Gladish et al., 2015). In our model, the ice melt rates are determined from the given conditions in temperature (-1.7°C , and salinity (35 psu) of the fjord waters), and the given geometry (Sect. 2.1.3). The fact that we are able to model JIs retreat with a constant ocean temperature suggests that the retreat and acceleration observed at JI are not likely to be controlled by the year to year variability in ocean temperatures. This conclusion agrees with the observational study of Gladish et al. (2015) who analysed ocean temperature variability in the Ilulissat fjord with JI variability and who found that after 1999 there was no clear correlation. Our results do not, however, imply that the ocean influence in JI's retreat is negligible (Fig. S5), but rather that the glacier most likely responds to changes in ocean temperature that are sustained for longer time periods, e.g. decadal time scales. Two additional experiments, where the input ocean temperature (T_o) was increased to -1°C indicate that higher melt rates beneath the grounding line could potentially explain the retreat observed after 2010. In our first experiment, the input T_o was increased from -1.7°C to -1°C starting 1997 ($\sim 0.7^{\circ}\text{C}$ relative to 1990). This temperature increase is consistent with observed ocean temperatures at the mouth of the Ilulissat fjord (Gladish et al., 2015) and generated in our simulation, for the period 1997-2014, an accelerated retreat of the front that does not correlate with observations (Fig. S7). Similarly, mass loss estimates from the simulations are significantly larger (by $\sim 50\%$; Fig. S6) than those calculated from airborne and satellite altimetry observations (Sect. 3.1.2). Overall, the experiment shows that an increase in ocean temperature that starts in 1997 and is sustained until 2014 generates modelled estimates for the period 1998-2014 that do not agree with observations. In the second experiment, T_o was increased to -1°C starting in 2010 ($\sim +0.7^{\circ}\text{C}$ at the base of the shelf in 2010). For the period 2010-2014, our model predicted a faster retreat of the front that correlates well with observations (Fig. S7), and an increase of mass loss by $\sim 7\text{ Gt}$ (Fig. S6). This experiment shows that an increase in ocean temperature beginning in 2010 could potentially explain the retreat observed thereafter.

4 Conclusions

In this study, a three-dimensional, time-dependent regional outlet glacier model is used to investigate the processes driving the dynamic evolution of JI and its seasonal variation in ice velocity between 1990 and 2014. Here, we attempted to simulate the recent behaviour of JI with a process-based model. The model parameters were calibrated such that the model reproduced observed front positions (Fig. 2) and ice mass change observations (Fig. 4) at JI over the periods 1990-2014 and 1997-2014, respectively. We obtain a good agreement of our model output with time series of measured horizontal velocities, observed thickness changes, and GPS derived elastic uplift of the crust (Figs. 3 and 5). Overall, the study shows progress in modelling the temporal variability of the flow at JI.

Our results suggest that most of the JI retreat during 1990-2014 is driven by the ocean parametrization, and the glacier's subsequent response, which is largely governed by its own bed geometry (Figs. 6, 7 and S5). In agreement with previous studies (e.g. Joughin et al. 2012), our simulations suggest that the overall variability in the modelled horizontal velocities is a response to variations in terminus position (Fig. 7). In our model, the seasonal variability is likely driven by processes related to the atmospheric forcing applied (e.g. temperature and SMB variability), which in fact represents the only seasonal input used in the model. The greater than seasonal frequency seen in our simulations is attributed to grid resolution and missing seasonal scale processes (e.g., ice mélange variability or seasonal ocean temperature variability) in the model. Sensitivity experiments performed on a 1 km grid did not show significant improvement with respect to ice thickness (Fig. S10) or surface speed (i.e. shape of the flow and overall magnitude; Fig. S11).

In 1990, JI had a large floating tongue (> 10 km; e.g. Motyka et al., 2011) that we are not able to simulate during the equilibrium runs. In our model (Fig. 6), the glacier starts to develop a floating tongue comparable with observations in 1999. Starting in 2000, the floating tongue is consistent in length and thickness with observations and the model is able to simulate its breakup (that occurred in late summer 2003) and the subsequent glacier acceleration. The difference between observed and modelled pre-1999 geometry results in relatively large basal melt rates for the period 1997-2003 (Fig. S9). Nevertheless, the model is able to capture the overall retreat of the terminus and the trends in the observed velocities (Figs. 2 and 3) for the period 1990-2010. Finally, the 2010-2012 observed terminus retreat (Joughin et al., 2014) is not reproduced in our simulations, likely due to inaccuracies in basal topography, or

1 misrepresentations of the atmospheric forcing and the ocean parametrization that we used.
2 Additional sensitivity experiments showed that an increase in ocean temperature of $\sim 0.7^{\circ}\text{C}$
3 for the period 2010-2014 may trigger a retreat of the terminus that agrees better with
4 observations (Figs. S6 and S7).

5 Our model reproduces two distinct flow accelerations in 1998 and 2003 that are consistent
6 with observations. The first was generated by a retreat of the terminus and moderate thinning
7 prior to 1998; the latter was triggered by the final breakup of the floating tongue. During this
8 period, JI attained in our simulation unprecedented velocities as high as 20 km a^{-1} .
9 Additionally, the final breakup of the floating tongue generated a reduction in buttressing that
10 resulted in further thinning. Similar to previous studies (Nick et al., 2009; Vieli et al., 2011;
11 Joughin et al. 2012), our results show that the dynamic changes observed at JI are triggered at
12 the terminus (Figs. 7, S5, S14 and S16).

13 In accordance with previous studies (Thomas, 2004; Joughin et al., 2012), our findings
14 suggest that the speeds observed today at JI are a result of thinning induced changes due to
15 reduction in resistive stress (buttressing) near the terminus correlated with inland steepening
16 slopes (Figs. 6 and 7). Both model and observations suggest that JI has been losing mass at an
17 accelerating rate and that the glacier has continued to accelerate through 2014 (Fig. 4).

Author Contributions

I.S.M. was responsible for the numerical modelling part. J.B. provided the bed model. M.R.V.D.B, and P.K.M. provided climate data. S.A.K and B.W. provided observational data. I.S.M. and S.A.K created the figures and wrote the manuscript with contributions from A. A, J.B., T.V.D., M.R.V.D.B, B.W., P.K.M, K.K., and C.K.

Acknowledgements

Ioana S. Muresan is funded by the Forskningsraadet for Natur og Univers (grant no. 12-155118). Shfaqat A. Khan is supported by Carlsbergfondet (grant no. CF14-0145). Jonathan Bamber was part funded by UK NERC grant NE/M000869/1. Bert Wouters is funded by a Marie Curie International Outgoing Fellowship within the 7th European Community Framework Programme (FP7-PEOPLE-2011-IOF-301260). The development of PISM is supported by NASA grants NNX13AM16G and NNX13AK27G. We thank the editor, five anonymous reviewers for their valuable comments and suggestions to improve and clarify the manuscript, and Veit Helm for providing cryosat-2 data.

References

- Albrecht, T., M. Martin, M. Haseloff, R. Winkelmann, and A. Levermann. 2011. "Parameterization for subgrid-scale motion of ice-shelf calving fronts." *The Cryosphere* 5: 35–44. doi:10.5194/tc-5-35-2011.
- Amundson, J. M., M. Fahnestock, M. Truffer, J. Brown, M. P. Lüthi, and R. J. Motyka. 2010. "Ice mélange dynamics and implications for terminus stability, Jakobshavn Isbræ, Greenland." *J. Geophys. Res.* 115: F01005. doi:10.1029/2009JF001405.
- Aschwanden, A., E. Bueler, C. Khroulev, and H. Blatter. 2012. "An enthalpy formulation for glaciers and ice sheets." *J. Glaciol.* 58(209): 441–457. doi:10.5194/tcd-6-5069-2012. doi:10.3189/2012JoG11J088.

1 Aschwanden, A., G. Aðalgeirsdóttir, and C. Khroulev. 2013. "Hindcast to measure ice sheet
2 model sensitivity to initial states." *The Cryosphere* 7: 1083–1093. doi:10.5194/tcd-6-5069-
3 2012.

4 Bamber, J. L., J. A. Griggs, R. T. W. L. Hurkmans, J. A. Dowdeswell, S. P. Gogineni, I.
5 Howat, J. Mouginot, J. Paden, S. Palmer, E. Rignot, and D. Steinhage. 2013. "A new bed
6 elevation dataset for Greenland." *The Cryosphere* 7: 499–510. doi:10.5194/tc-7-499-2013.

7 Beckmann, A., and H. Goosse. 2003. "A parameterization of ice shelf–ocean interaction for
8 climate models." *Ocean Model.* 5 (2): 157–170. doi:10.1016/S1463-5003(02)00019-7.

9 Bevan, S. L., A. J. Luckman, and T. Murray. 2012. "Glacier dynamics over the last quarter of
10 a century at Helheim, Kangerdlugssuaq and other major Greenland outlet glaciers." *The*
11 *Cryosphere* 6: 923–937. doi:10.5194/tc-6-923-2012.

12 Bindshadler, R. A., S. Nowicki, A. Abe-Ouchi, A. Aschwanden, H. Choi, J. Fastook, G.
13 Granzow, et al. 2013. "Ice-Sheet Model Sensitivities to Environmental Forcing and Their Use
14 in Projecting Future Sea Level (the SeaRISE Project)." *J. Glaciol.* 59 (214): 195–224.
15 doi:10.3189/2013JoG12J125.

16 Broeke, M. van den, J. Bamber, J. Ettema, Eric Rignot, E. Schrama, W. J. van de Berg, E. van
17 Meijgaard, I. Velicogna, and B. Wouters. 2009. "Partitioning recent Greenland mass loss."
18 *Science* 326 (5955): 984–986. doi:10.1126/science.1178176.

19 Bueler, E., and J. Brown. 2009. "Shallow shelf approximation as a 'sliding law' in a
20 thermodynamically coupled ice sheet model." *J. Geophys. Res.* 114: F03008.
21 doi:10.1029/2008JF001179.

22 Csatho, B., T. Schenk, C. J. Van Der Veen and W. B. Krabill. 2008. "Intermittent thinning of
23 Jakobshavn Isbræ, West Greenland, since the Little Ice Age." *J. Glaciol.* 54 (184): 131–144.
24 doi: 10.3189/002214308784409035.

25 Cuffey, K. M., and W. S. B. Paterson. 2010. "The Physics of Glaciers". Elsevier, 4th edition.
26 ISBN 9780123694614.

27 de Juan, J., P. Elósegui, M. Nettles, T.B. Larsen, J.L. Davis, G.S. Hamilto, L.A. Stearns, M.
28 L. Anderson, G. Ekström, L. Stenseng, S. A. Khan, R. Forsberg. 2010. "Sudden increase in
29 tidal response linked to calving and acceleration at a large Greenland outlet glacier".
30 *Geophys. Res. Lett.* 37: L12501. doi:10.1029/2010GL043289.

1 Echelmeyer, K.A., W.D. Harrison, C. Larson, and J.E. Mitchell. 1994. The role of the
2 margins in the dynamics of an active ice stream. *J. Glaciol.* 40(136): 527–538.

3 Enderlin, E. M., I. M. Howat, and A. Vieli. 2013. “High sensitivity of tidewater outlet glacier
4 dynamics to shape.” *The Cryosphere* 7: 1007–1015. doi: 10.5194/tc-7-1007-2013.

5 Enderlin, E. M., I. M. Howat, S. Jeong, M. J. Noh, J. H. van Angelen, and M. R. van den
6 Broeke. 2014. “An improved mass budget for the Greenland ice sheet.” *Geophys. Res. Lett.*
7 41: 866–872. doi:10.1002/2013GL059010. Feldmann, J., T. Albrecht, C. Khroulev, F. Pattyn,
8 and A. Levermann. 2014. “Resolution-dependent performance of grounding line motion in a
9 shallow model compared with a full-Stokes model according to the MISIMIP3d
10 intercomparison.” *J. Glaciol.* 60 (220): 353–360. doi:10.3189/2014JoG13J093.

11 Feldmann, J., Albrecht, T., Khroulev, C., Pattyn, F., and Levermann, A.: Resolution-
12 dependent performance of grounding line motion in a shallow model compared with a full-
13 Stokes model according to the MISIMIP3d intercomparison, *J. Glaciol.*, 60, 353–360,
14 doi:10.3189/2014JoG13J093, 2014.

15 Gladish, C. V., D. M. Holland, and C. M. Lee. 2015a. “Oceanic boundary conditions for
16 Jakobshavn Glacier. Part II: Provenance and sources of variability of Disko Bay and Ilulissat
17 icefjord waters, 1990–2011.” *J. Phys. Oceanogr.* 45: 33–63. doi:dx.doi.org/10.1175/JPO-D-
18 14-0045.1.

19 Gladish, C. V., D. M. Holland, A. Rosing-Asvid, J. W. Behrens, and J. Boje. 2015b. “Oceanic
20 boundary conditions for Jakobshavn Glacier. Part I: Variability and renewal of Ilulissat
21 icefjord waters, 2001–2014.” *J. Phys. Oceanogr.* 45: 3–32. doi:dx.doi.org/10.1175/JPO-D-14-
22 0044.1.

23 Gladstone, R. M., A. J. Payne, and S. L. Cornford. 2010. “Parameterising the grounding line
24 in flow-line ice sheet models.” *The Cryosphere* 4: 605–19. doi:10.5194/tc-4-605-2010.

25 Hanna, E., X. Fettweis, S. Mernild, J. Cappelen, M. Ribergaard, C. Shuman, K. Steffen, L.
26 Wood, and T. Mote. 2014. “Atmospheric and oceanic climate forcing of the exceptional
27 Greenland ice sheet surface melt in summer 2012.” *Int. J. Climatol.* 34 (4): 1022–1037.
28 doi:10.1002/joc.3743.

29 Holland, D. M., R. H. Thomas, B. de Young, M. H. Ribergaard, and B. Lyberth. 2008.
30 “Acceleration of Jakobshavn Isbræ Triggered by Warm Subsurface Ocean Waters.” *Nat.*
31 *Geosci.* 1: 659–664. doi:10.1038/ngeo316.

1 Howat I. M., Y. Ahn, I. Joughin, M. R. van den Broeke, J. T. M. Lenaerts, and B. Smith.
2 2011. "Mass balance of Greenland's three largest outlet glaciers, 2000–2010." *Geophys. Res.*
3 *Lett.* 38(12): L12501. doi: 10.1029/2011GL047565.

4 Hutter K. 1983. "Theoretical Glaciology: Material Science of Ice and the Mechanics of
5 Glaciers and Ice Sheets." D. Reidel Publishing Co. Tokyo, Terra Scientific Publishing Co.
6 xxxii, 510 p.

7 IPCC. 2013. "Climate Change 2013: The Physical Science Basis. Contribution of Working
8 Group I to the Fifth Assessment Report of the Intergovernmental Panel on Climate Change."
9 Cambridge University Press, Cambridge, United Kingdom and New York, NY, USA: 1535
10 pp. doi:10.1017/CBO9781107415324.

11 Jamieson, S. S. R., A. Vieli, S. J. Livingstone, C. Ó Cofaigh, C. Stokes, C.-D. Hillenbrand,
12 and J. A. Dowdeswell. 2012. "Icestream stability on a reverse bed slope". *Nat. Geosci.* 5
13 :799–802. doi:10.1038/N GEO1600.

14 Jones, P. W. 1999. "First- and Second-Order Conservative Remapping Schemes for Grids in
15 Spherical Coordinates". *Mon. Weather Rev.* 127 (9): 2204–2210. doi:
16 [http://dx.doi.org/10.1175/1520-0493\(1999\)127<2204:FASOCR>2.0.CO;2](http://dx.doi.org/10.1175/1520-0493(1999)127<2204:FASOCR>2.0.CO;2).

17 Joughin, I., W. Abdalati, and M. Fahnestock. 2004. "Large fluctuations in speed on
18 Greenland's Jakobshavn Isbræ glacier." *Nature* 432: 608–610. doi:10.1038/nature03130.

19 Joughin, I., I. M. Howat, M. Fahnestock, B. Smith, W. Krabill, R. B. Alley, H. Stern, and M.
20 Truffer. 2008. "Continued evolution of Jakobshavn Isbrae Following Its Rapid Speedup." *J.*
21 *Geophys. Res.* 113: F04006. doi:10.1029/2008JF001023.

22 Joughin, I., B. E. Smith, I. M. Howat, T. Scambos, and T. Moon. 2010. "Greenland Flow
23 Variability from Ice-Sheet-Wide Velocity Mapping". *J. Glaciol.* 56 (197): 415-430.
24 doi:10.3189/002214310792447734.

25 Joughin, I., I. Howat, B. Smith, and T. Scambos. 2011. "MEaSURES Greenland Ice Velocity:
26 Selected Glacier Site Velocity Maps from InSAR". Boulder, Colorado, USA: NASA DAAC
27 at the National Snow and Ice Data Center. doi:10.5067/MEASURES/CRYOSPHERE/nsidc-
28 0481.001.

29 Joughin, I., B. E. Smith, I. M. Howat, D. Floricioiu, R. B. Alley, M. Truffer, and M.
30 Fahnestock. 2012. "Seasonal to decadal scale variations in the surface velocity of Jakobshavn

1 Isbræ, Greenland: Observation and model-based analysis.” *J. Geophys. Res.* 117: F02030.
2 doi:10.1029/2011JF002110.

3 Joughin, I., S. B. Das, G. E. Flowers, M. D. Behn, R. B. Alley, M. A. King, B. E. Smith, J. L.
4 Bamber, M. R. van den Broeke, and J. H. van Angelen. 2013. “Influence of ice-sheet
5 geometry and supraglacial lakes on seasonal ice-flow variability.” *The Cryosphere* 7: 1185-
6 1192. doi:10.5194/tc-7-1185-2013.

7 Joughin, I., B. E. Smith, D. E. Shean, and D. Floricioiu. 2014. “Brief Communication: Further
8 summer speedup of Jakobshavn Isbræ.” *The Cryosphere* 8: 209–214. doi:10.5194/tc-8-209-
9 2014.

10 Keegan, K. M., R.M. Albert, J. R. McConnell and I. Baker. 2014. “Climate change and forest
11 fires synergistically drive widespread melt events of the Greenland Ice Sheet.” *P. Natl. Acad.*
12 *Sci.* 111(22): 7964–7967. doi: 10.1073/pnas.1405397111.

13 Khan, S. A., L. Liu, J. Wahr, I. Howat, I. Joughin, T. van Dam, and K. Fleming. 2010. “GPS
14 measurements of crustal uplift near Jakobshavn Isbræ due to glacial ice mass loss.” *J.*
15 *Geophys. Res.* 115: B09405. doi:10.1029/2010JB007490.

16 Khan, S. A., K. H. Kjær, M. Bevis, J. L. Bamber, J. Wahr, K. K. Kjeldsen, A. A. Bjørk, N. J.
17 Korsgaard, L. A. Stearns, M. R. van den Broeke, L. Liu, N. K. Larsen, and I. S. Muresan.
18 2014. “Sustained Mass Loss of the Northeast Greenland Ice Sheet Triggered by Regional
19 Warming.” *Nat. Clim. Change* 4: 292–299. doi:10.1038/nclimate2161.

20 Khan, S. A., A. Aschwanden, A. A. Bjørk, J. Wahr, K. K. Kjeldsen, and K. H. Kjær. 2015.
21 “Greenland ice sheet mass balance: a review.” *Rep. Prog. Phys.* 78(4). doi: 10.1088/0034-
22 4885/78/4/046801.

23 Kimura, S., P. R. Holland, A. Jenkins, and M. Piggott. 2014. “The effect of meltwater plumes
24 on the melting of a vertical glacier face.” *J. Phys. Oceanogr.* 44: 3099-3117. doi:
25 10.1175/JPO-D-13-0219.1

26 Krabill, W., W. Abdalati, E. Frederick, S. Manizade, C. Martin, J. Sonntag, R. Swift, R.
27 Thomas, W. Wright, and J. Yungel. 2000. “Greenland Ice Sheet: High-Elevation Balance and
28 Peripheral Thinning.” *Science* 289: 428–430. doi:10.1126/science.289.5478.428.

29 Krabill, W., E. Hanna, P. Huybrechts, W. Abdalati, J. Cappelen, B. Csatho, E. Frederick, S.
30 Manizade, C. Martin, J. Sonntag, R. Swift, R. Thomas, and J. Yungel. 2004. “Greenland Ice

1 Sheet: Increased coastal thinning”, *Geophys. Res. Lett.* 31: L24402.
2 doi:10.1029/2004GL021533.

3 Krabill, W. B. 2014. “IceBridge ATM L2 Icessn Elevation, Slope, and Roughness, [1993-
4 2014]. Boulder, Colorado USA: NASA Distributed Active Archive Center at the National
5 Snow and Ice Data Center. Digital media.Updated 2014.” <http://nsidc.org/data/ilatm2.html>.

6 Larour, E., H. Seroussi, M. Morlighem, and E. Rignot. 2012. “Continental scale, high order,
7 high spatial resolution, ice sheet modeling using the Ice Sheet System Model (ISSM).” *J.*
8 *Geophys. Res.-Earth* (2003-2012) 117: F01022. doi:10.1029/2011JF002140.

9 Levermann, A., T. Albrecht, R. Winkelmann, M. A. Martin, M. Haseloff, and I. Joughin.
10 2012. “Kinematic first-order calving law implies potential for abrupt ice-shelf retreat.” *The*
11 *Cryosphere* 6: 273–286. doi:10.5194/tc-6-273-2012.

12 Luckman, A., and T. Murray. 2005. “Seasonal variation in velocity before retreat of
13 Jakobshavn Isbræ, Greenland.” *J. Geophys. Res. Letters* 32: L08501.
14 doi:10.1029/2005GL022519.

15 MacAyeal, D. R., T. A. Scambos, C. L. Hulbe and M. A. Fahnestock. 2003. “Catastrophic
16 iceshelf break-up by an ice-shelf-fragment-capsize mechanism.” *J. Glaciol.* 49(164): 22-36.

17 Mahaffy, M. W. 1976. “A three–dimensional numerical model of ice sheets: tests on the
18 Barnes Ice Cap, Northwest Territories”. *J. Geophys. Res.*, 81(6):1059–1066.

19 Martin, M. A., R. Winkelmann, M. Haseloff, T. Albrecht, E. Bueler, C. Khroulev, and A.
20 Levermann. 2011. “The Potsdam Parallel Ice Sheet Model (PISM-PIK), Part II: Dynamical
21 equilibrium simulation of the Antarctic Ice Sheet.” *The Cryosphere* 5: 727–740.
22 doi:10.5194/tc-5-727-2011.

23 Mengel, M., and A. Levermann. 2014. “Ice plug prevents irreversible discharge from East
24 Antarctica.” *Nat. Clim. Change* 4: 451–455. doi:10.1038/nclimate2226.

25 Moon, T., I. Joughin, B. Smith, and I. Howat. 2012. “21st-Century evolution of Greenland
26 outlet glacier velocities.” *Science* 336: 576–578. doi:10.1126/science.1219985.

27 Motyka, R. J., M. Truffer, M. Fahnestock, J. Mortensen, S. Rysgaard, and I. Howat. 2011.
28 “Submarine melting of the 1985 Jakobshavn Isbræ floating tongue and the triggering of the
29 current retreat.” *J. Geophys. Res.* 116: F01007. doi:10.1029/2009JF001632.

1 NSIDC. 2015. "2014 melt season in review." National Snow & Ice Data Center (NSIDC).
2 Accessed July 09, 2015. [http://nsidc.org/greenland-today/2015/01/2014-melt-season-in-](http://nsidc.org/greenland-today/2015/01/2014-melt-season-in-review/)
3 [review/](http://nsidc.org/greenland-today/2015/01/2014-melt-season-in-review/).

4 Nghiem, S. V., D. K. Hall, T. L. Mote, M. Tedesco, M. R. Albert, K. Keegan, C. A. Shuman,
5 N. E. DiGirolamo, and G. Neumann. 2012. "The extreme melt across the Greenland ice sheet
6 in 2012." *Geophys. Res. Lett.* 39: L20502. doi: 10.1029/2012GL053611.

7 Nick, F. M., A. Vieli, M. L. Andersen, I. Joughin, A. Payne, T. L. Edwards, F. Pattyn, and R.
8 S. van de Wal. 2013. "Future sea-level rise from Greenland's main outlet glaciers in a
9 warming climate." *Nature* 497: 235–238. doi:10.1038/nature12068.

10 Nick, F.M., A. Vieli, I. M. Howat, and I. Joughin. 2009. "Large-Scale Changes in Greenland
11 Outlet Glacier Dynamics Triggered at the Terminus." *Nat. Geosci.* 2: 110–114.
12 doi:10.1038/ngeo394.

13 Nielsen, K., S. A. Khan, G. Spada, J. Wahr, M. Bevis, L. Liu, and T. van Dam. 2013.
14 "Vertical and horizontal surface displacements near Jakobshavn Isbræ driven by melt-induced
15 and dynamic ice loss." *J. Geophys. Res.-Sol. Ea.* 118: 1837–1844. doi:10.1002/jgrb.50145.

16 Noël, B., W. J. van de Berg, E. van Meijgaard, P. Kuipers Munneke, R. S. W. van de Wal,
17 and M. R. van den Broeke. 2015. "Summer snowfall on the Greenland Ice Sheet: a study with
18 the updated regional climate model RACMO2.3." *The Cryosphere Discussion* 9: 1177-1208.
19 doi: 10.5194/tcd-9-1177-2015.

20 Parizek, B.R., and R.T. Walker. 2010. "Implications of initial conditions and ice–ocean
21 coupling for grounding-line evolution." *Earth Planet. Sci. Lett.* 300: 351–358.
22 doi:10.1016/j.epsl.2010.10.016.

23 Pattyn, F., C. Schoof, L. Perichon, R. C. A. Hindmarsh, E. Bueler, B. de Fleurian, G. Durand,
24 et al. 2012. "Results of the Marine Ice Sheet Model Intercomparison Project, MISMP." *The*
25 *Cryosphere* 6: 573–588. doi:10.5194/tc-6-573-2012.

26 Pattyn, F., Perichon, L., Durand, G., Favier, L., Gagliardini, O., Hindmarsh, R., Zwinger, T.,
27 Albrecht, T., Cornford, S., Docquier, D., Fust, J. J., Goldberg, D., Gudmundsson, G. H.,
28 Humbert, A., Hutten, M., Huybrechts, P., Jouvett, G., Kleiner, T., Larour, E. and Martin, D.,
29 Morlighem, M., Payne, A. J., Pol- 255 lard, D., Ruckamp, M., Rybak, O., Seroussi, H.,
30 Thoma, M., and Wilkens, N. 2010. "Grounding-line migration in plan-view marine ice-sheet

models: results of the ice2sea MISMIP3d intercomparison“. *J. Glaciol.* 59: 410–422.
doi:<http://dx.doi.org/10.3189/2013JoG12J12910.3189/2013JoG12J129>.

Pollard, D., R. M. DeConto, and R. B. Alley. 2015. “Potential Antarctic Ice Sheet retreat driven by hydrofracturing and ice cliff failure.” *Earth Planet. Sci. Lett.* 412: 112–121. doi: 10.1016/j.epsl.2014.12.035.

Price, S. F., A. J. Payne, I. M. Howat, and B. E. Smith. 2011. “Committed sea-level rise for the next century from Greenland ice sheet dynamics during the past decade.” *P. Natl. Acad. Sci. USA* 108: 8978–8983. doi:10.1073/pnas.1017313108.

Rignot, E., J. L. Bamber, M. R. van den Broeke, C. Davis, Y. Li, W. J. van de Berg, and E. van Meijgaard. 2008. “Recent Antarctic ice mass loss from radar interferometry and regional climate modeling.” *Nat. Geosci.* 1: 106–110. doi:10.1038/ngeo102.

Schoof, C. 2007. “Ice sheet grounding line dynamics: steady states, stability, and hysteresis.” *J. Geophys. Res.* 112 (F03S28). doi:10.1029/2006JF000664.

Schoof, C. and R. Hindmarsh. 2010. “Thin-film flows with wall slip: an asymptotic analysis of higher order glacier flow models”. *Quart. J. Mech. Appl. Math.* 63(1): 73–114. doi: 10.1093/qjmam/hbp025.

Seroussi, H., H. B. Dhia, M. Morlighem, E. Larour, E. Rignot, and D. Aubry. 2012. “Coupling ice flow models of varying orders of complexity with the Tiling method.” *J. Glaciol.* 58: 776–786. doi:10.3189/2012JoG11J195.

Shapiro, N. M., and M. H. Ritzwoller. 2004. “Inferring surface heat flux distributions guided by a global seismic model: particular application to Antarctica.” *Earth Planet. Sci. Lett.* 223: 213–224. doi: 10.1016/j.epsl.2004.04.011.

Shepherd, A., E. R. Ivins, A. Geruo, V. R. Barletta, M. J. Bentley, S. Bettadpur, K. H. Briggs, D. H. Bromwich, et al. 2012. “A reconciled estimate of ice-sheet mass balance.” *Science* 338(6111): 1183–1189. doi:10.1126/science.1228102.

Slater, D. A., P. W. Nienow, T. R. Cowton, D. N. Goldberg, and A. J. Sole. 2015. “Effect of near-terminus subglacial hydrology on tidewater glacier submarine melt rates.” *Geophys. Res. Lett.* 42: 2861–2868. doi: 10.1002/2014GL062494.

1 Sohn, H. G., K. C. Jezek, and C. J. van der Veen. 1998. "Jakobshavn Glacier, west Greenland:
2 30 years of spaceborne observations." *Geophys. Res. Lett.* 25(14): 2699-2702. doi:
3 10.1029/98GL01973.

4 Stanley, S. J., A. Jenkins, C. F. Giulivi and P. Dutrieux. 2011. "Stronger ocean circulation and
5 increased melting under Pine Island Glacier ice shelf." *Nat. Geosci.* 4: 519–523. doi:
6 10.1038/ngeo1188

7 Tedesco, M., X. Fettweis, T. Mote, J. Wahr, P. Alexander, J. E. Box, and B. Wouters. 2013.
8 "Evidence and analysis of 2012 Greenland records from spaceborne observations, a regional
9 climate model and reanalysis data." *The Cryosphere* 7: 615-630. doi: 10.5194/tc-7-615-2013

10 The PISM Authors. 2014. "PISM, a Parallel Ice Sheet Model. User's Manual." Accessed
11 June 15, 2015. <http://www.pism-docs.org/wiki/lib/exe/fetch.php?media=manual.pdf>.

12 Thomas, H. R., W. Abdalati, E. Frederick, W. B. Krabill, S. Manizade, and K. Steffen. 2003.
13 "Investigation of surface melting and dynamic thinning on Jakobshavn Isbræ." *J. Glaciol.* 49
14 (165): 231–239. doi:10.3189/172756503781830764.

15 Thomas, R. H. 2004. "Force-perturbation analysis of recent thinning and acceleration of
16 Jakobshavn Isbrae, Greenland." *J. Glaciol.* 50(168): 57–66. doi:
17 10.3189/172756504781830321.

18 Tulaczyk, S., W. B. Kamb, and H. F. Engelhardt. 2000a. "Basal mechanics of Ice Stream B,
19 West Antarctica 1. Till mechanics". *J. Geophys. Res.* 105(B1):463–481. doi:
20 10.1029/1999JB900329.

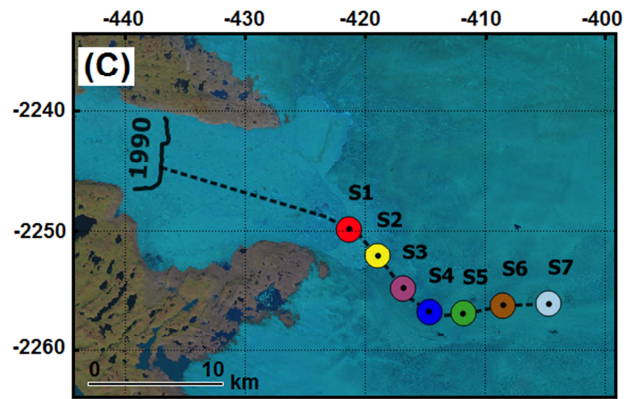
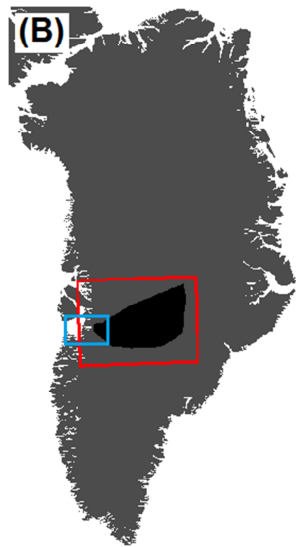
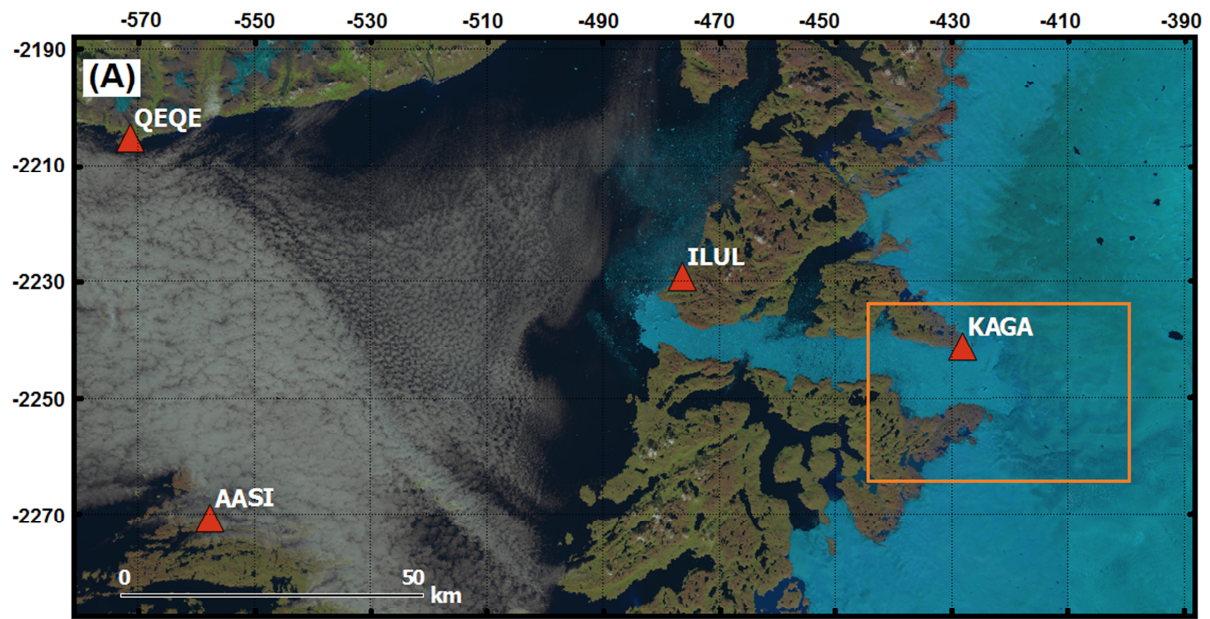
21 Tulaczyk, S., W. B. Kamb, and H. F. Engelhardt. 2000b. "Basal mechanics of Ice Stream B,
22 West Antarctica 2. Undrained plastic bed model". *J. Geophys. Res.* 105(B1): 483–494. doi:
23 10.1029/1999JB900328.

24 Van der Veen, C. J., J. C. Plummer, and L. A. Stearns. 2011. "Controls on the recent speed-up
25 of Jakobshavn Isbræ, West Greenland." *J. Glaciol.* 57 (204): 770–782.

26 Vieli, A., and F. M. Nick. 2011. "Understanding and Modeling Rapid Dynamic Changes of
27 Tidewater Outlet Glaciers: Issues and Implications." *Surv. Geophys.* 32: 437–458. doi:
28 10.1007/s10712-011-9132-4.

29 Weis M., R. Greve, and K. Hutter. 1999. "Theory of shallow ice shelves". *Continuum*
30 *Mechanics and Thermodynamics* 11(1): 15–50.

Winkelmann, R., M. A. Martin, M. Haseloff, T. Albrecht, E. Bueler, C. Khroulev, and A.
Levermann. 2011. "The Potsdam Parallel Ice Sheet Model (PISM-PIK) Part 1: Model
description." *The Cryosphere* 5: 715–726. doi:10.5194/tc-5-715-2011.



1
2 Figure 1. (A) Landsat 8 image of Ilulissat fjord and part of Disko Bay acquired in August
3 2014. The dark orange triangles indicate the locations of the GPS stations (GPS data shown in
4 Fig. 5). The rectangle defined by light orange borders outlines the location of Fig. 1C. (B)
5 Grey filled Greenland map. The black filled rectangle highlights the JI basin used to compute
6 the mass loss (Fig. 4) and is identical to Khan et al. (2014). The rectangle defined by red
7 borders indicates the computational domain. The light blue border rectangle represents the
8 location of Fig. 1A. (C) Coloured circles indicate the locations plotted in Fig. 3. The thick
9 black line denotes the JI terminus position in the 1990s. The dotted black line represents the
10 flow-line location plotted in Fig. 6. The coordinates given in (A) and (C) are in polar-
11 stereographic projection units (km).

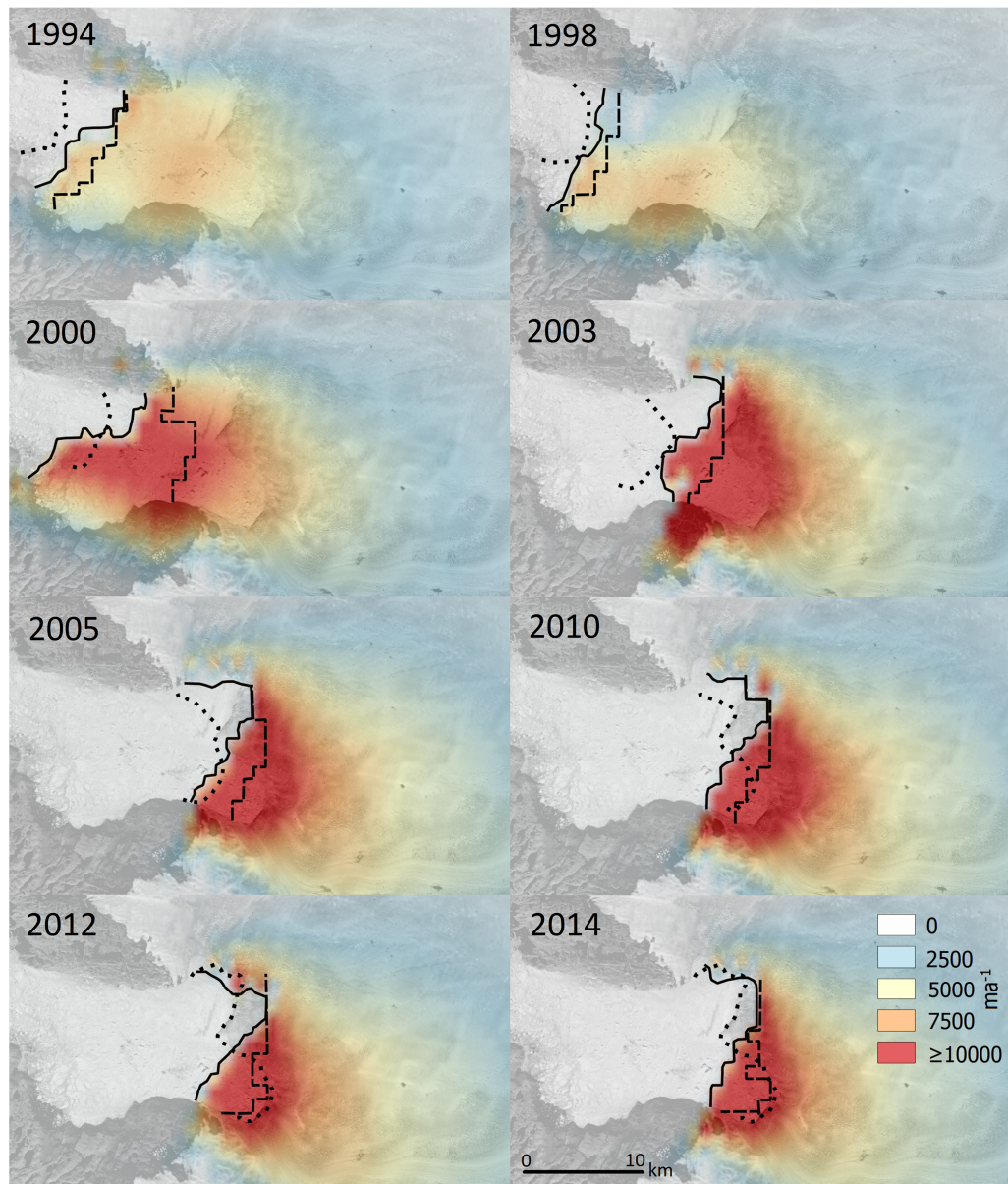


Figure 2. Modelled velocities at Jakobshavn Isbrae for December are shown for eight different years. The black line represents the modelled front positions, the black dotted line denotes the observed front position and the thick black dashed line represents the modelled grounding line position. The velocities are superimposed over a Landsat 8 image acquired in August 2014.

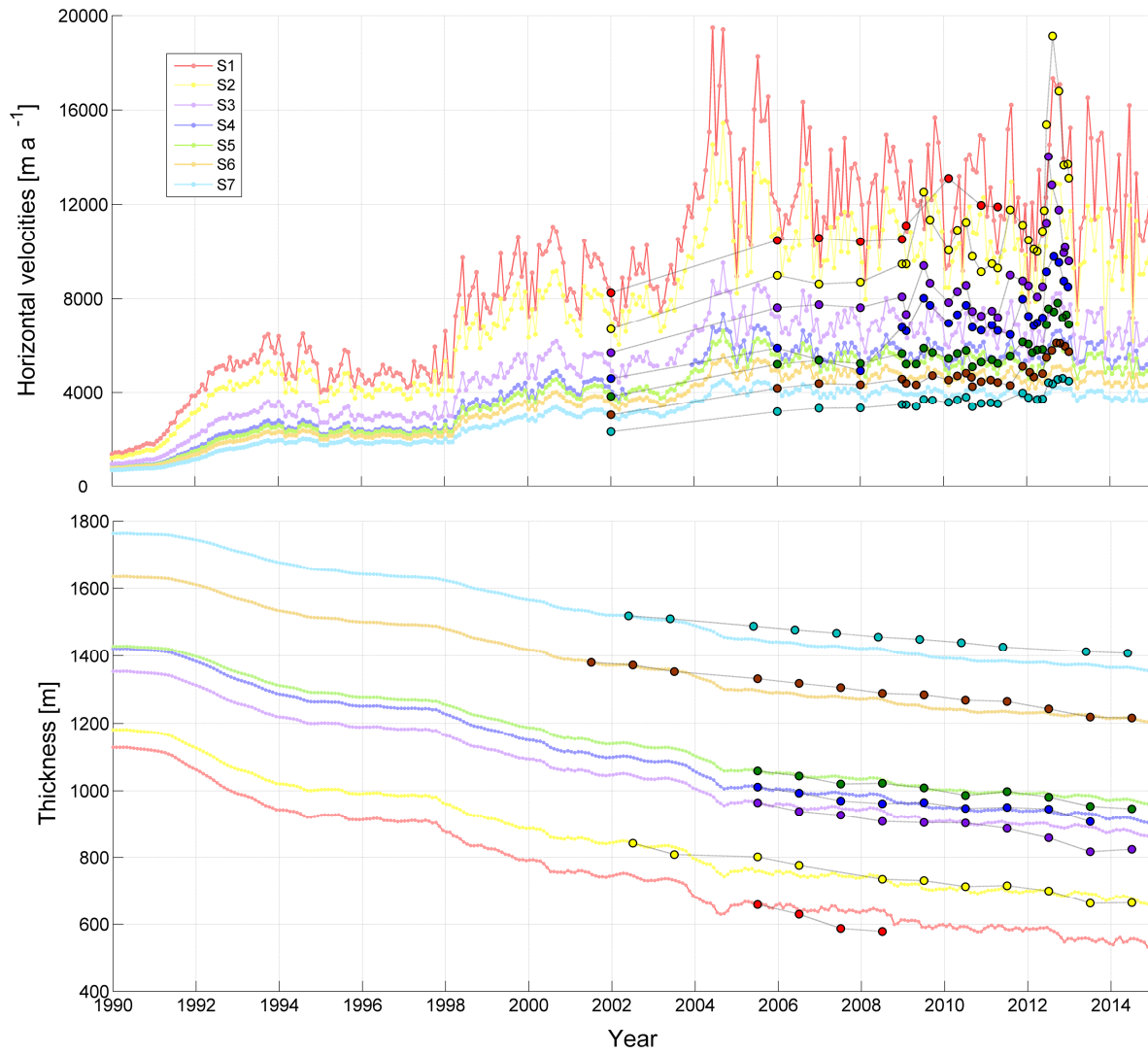


Figure 3. (A) Time series of modelled (filled circles) versus observed (filled circles with black edges) velocities (Joughin et al., 2010) (top figure) and ice thickness changes (Krabill, 2014) (bottom figure) for the period 1990-2014 at locations (S1 to S7) shown in Fig. 1C. The same colour scheme is used for the modelled and the observed data. The observed velocities prior to 2009 are mean winter velocities and are largely consistent with our modelled winter estimates for the same period. The observed thickness has been adjusted to match the model thickness at the first available observation (i.e., by summing the modelled ice thickness corresponding to the first available observation with the observed thickness changes).

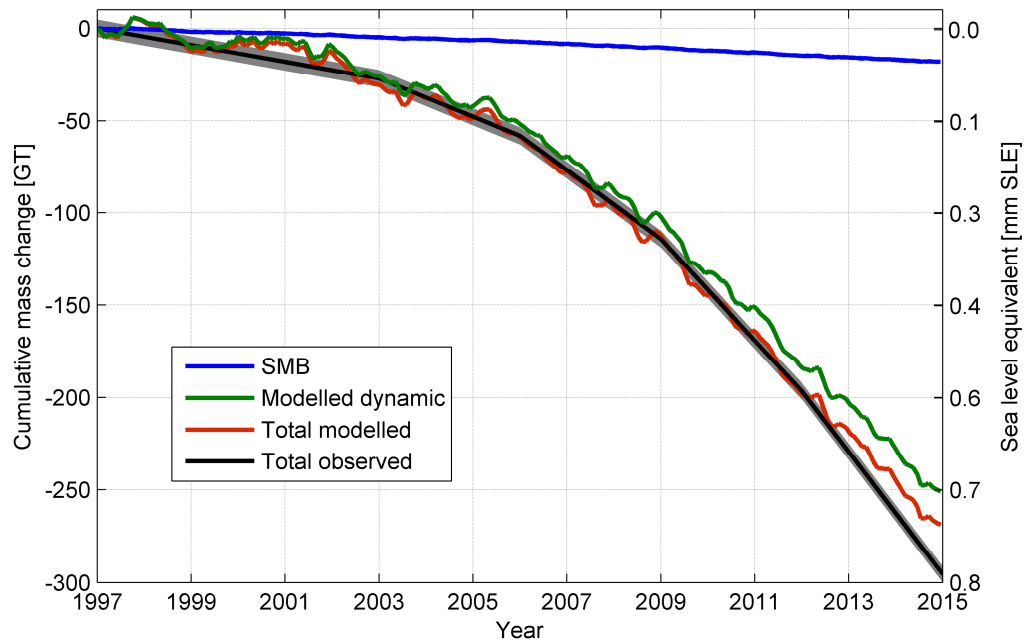


Figure 4. Modelled and observed cumulative mass change for Jakobshavn Isbræ. The blue curve represents the mass change due to SMB (Noël et al., 2015)) after the 1960-1990 baseline is removed. The green curve represents the modelled ice dynamics mass change (i.e., modelled mass change minus SMB change). The red curve represents the total modelled mass change including both SMB and ice dynamic changes. The black curve with grey error limits represents the total observed mass change including both SMB and ice dynamic changes. The modelled mass change for the period 1997-2014 is ~269 Gt and the observed mass change is ~296 Gt.

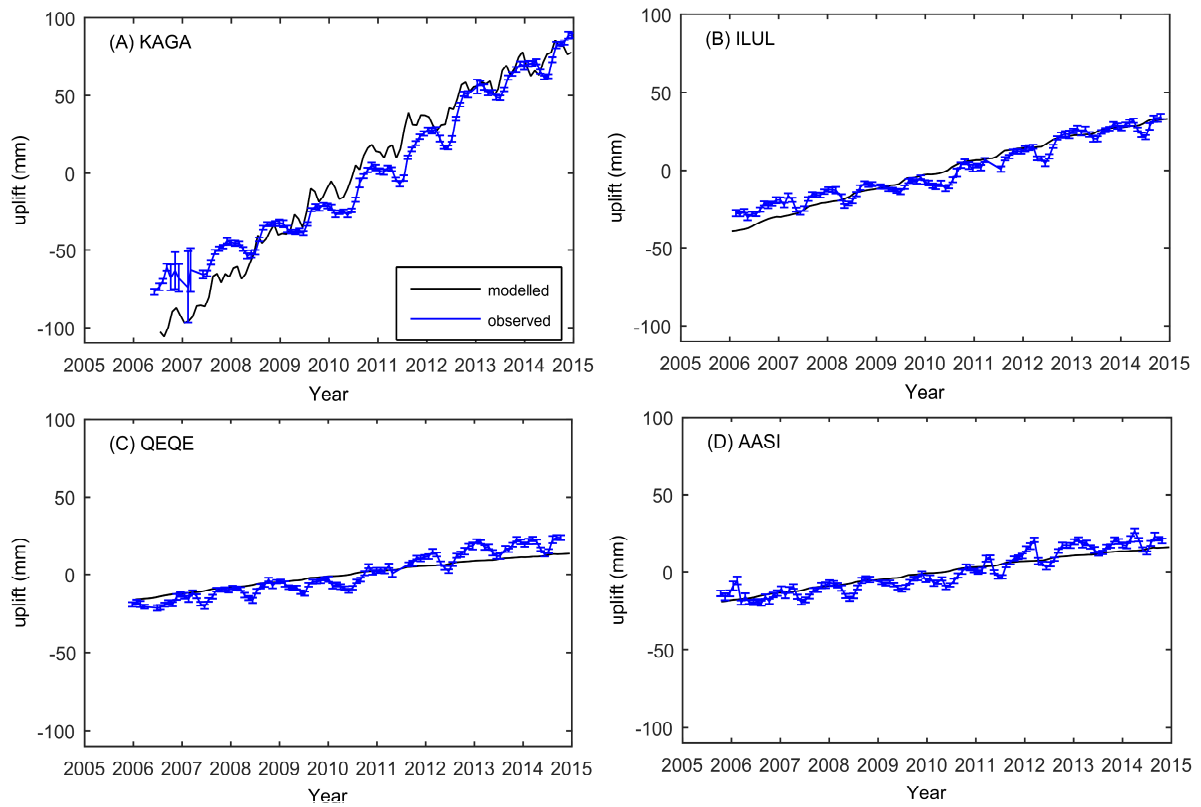


Figure 5. Observed versus modelled uplift in mm for the stations KAGA (A), ILUL (B), QEQE (C) and AASI (D). The positions of the four GPS stations are presented in Fig. 1A.

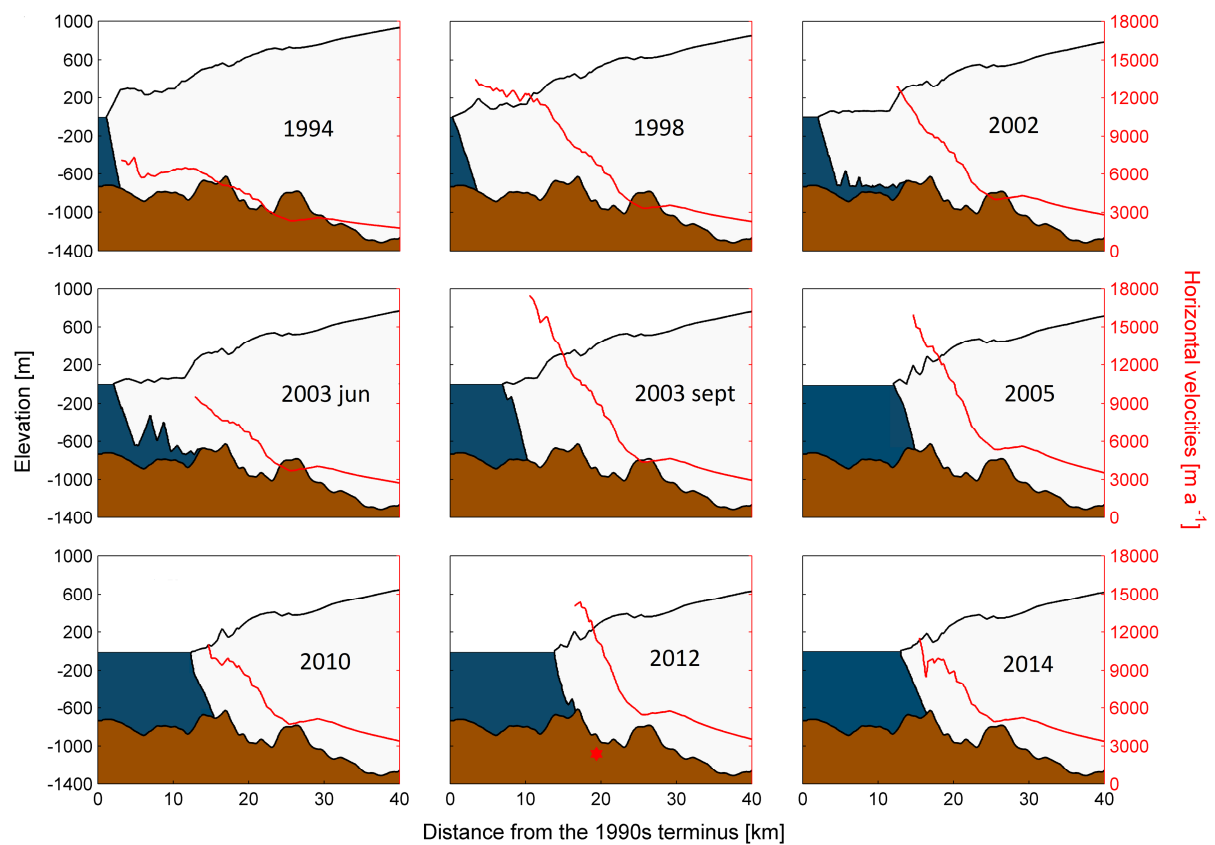


Figure 6. Modelled evolution of surface elevation (floating ice tongues thinner than 50 m are not shown) and horizontal velocities of Jakobshavn Isbræ for December along the flow-line shown in Fig. 1C. Note the acceleration in speed between 1994-1998 and between June 2003 and September 2003 corresponding to the final breakup of the floating tongue. The red star denotes the observed 2012 terminus position.

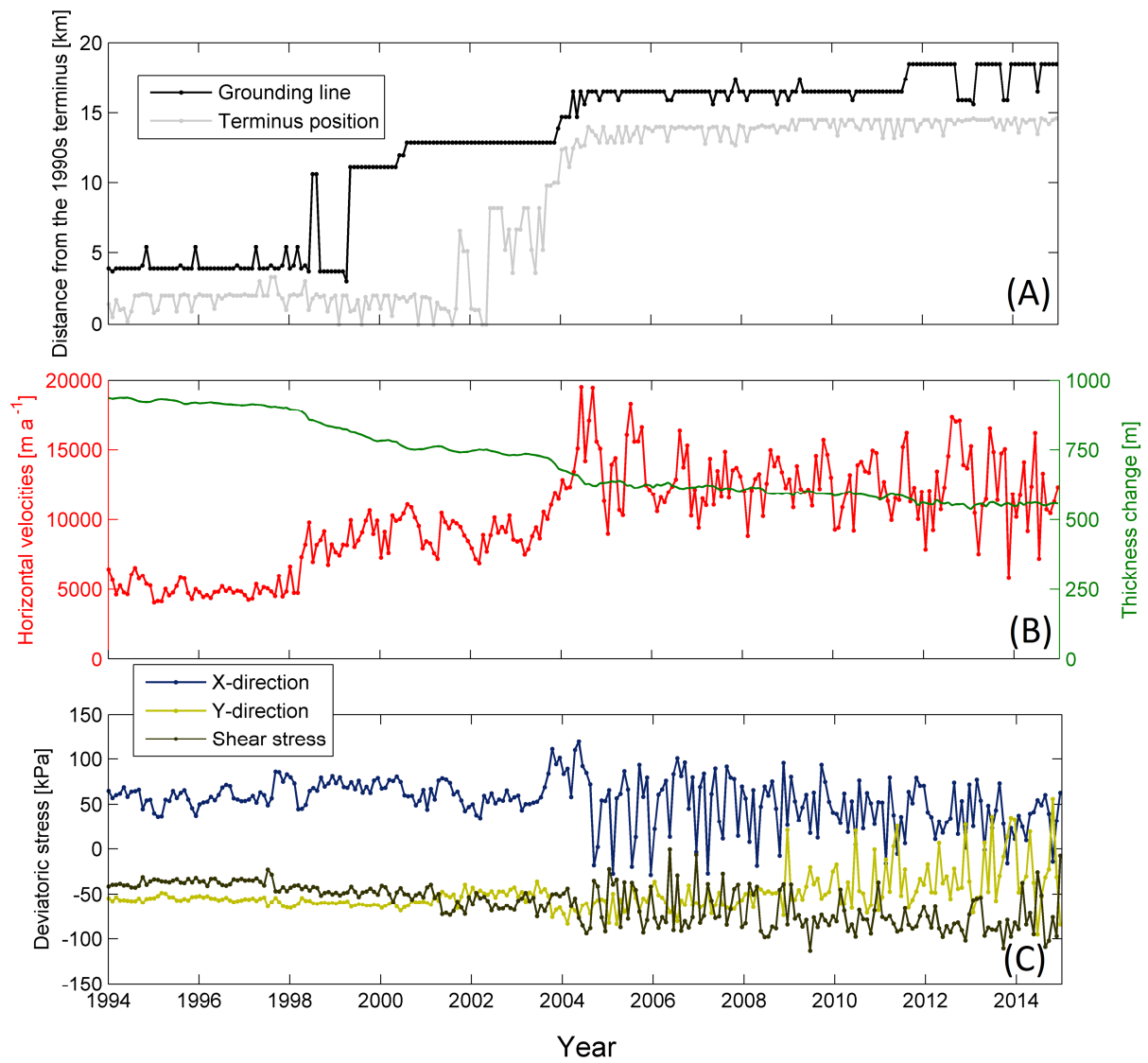


Figure 7. (A) Modelled grounding line and terminus position (floating ice tongues thinner than 50 m are not shown). (B) Modelled horizontal velocities and ice thickness changes at the point location S1 shown in Fig. 1C. (C) Modelled 2D deviatoric stresses (in the X direction, the Y direction, and the shear stress) at the point location S1 shown in Fig. 1C.