

rev#1 comments to the Author:

The authors more than addressed all of my comments and this paper, in my view, is ready for acceptance.

Thank you for your time, effort and advice. We feel that the paper has been markedly improved.

rev#2 comments to the Author:

As a scientist who has worked in the Amerasian Arctic for many years, I am in the best possible position to appreciate the effort expended by the authors of this manuscript. I am absolutely positive about the importance of this study on its own. I also think this study makes an important contribution towards reaching a plausible explanation of one of the most important issues observed in the Arctic, the degradation of sub-sea permafrost in the context of coastline retreat. Indeed, our ability to project future geofluid (including methane, carbon dioxide, hydrogen, water solutions...) leakages from the vast Arctic shelf into the water column largely depends upon the current state of sub-sea permafrost (Frederick and Buffet, 2014; Nicolsky et al., 2012-cited in ms).. Because the Arctic region lacks long-term and all-seasonal observations, reporting results of multiple geoelectric surveys taken in the same area along the same route during different times of year is invaluable. I would be more than happy if I could limit myself to only listing the advantages of this paper and recommend it for publication, but my role as a reviewer requires me to comment on downsides as well as positives. Unfortunately, I do see some downsides and I must report them.

Thank you for your time, effort and interest in this study and topic. We have attempted to improve the paper according to your criticisms, and provide explanations for points of contention.

First of all, I must say that the authors lack understanding of key sub-sea permafrost parameters which affect electrical resistivity. For example, assigning a resistivity of 15 Ohms to the frozen ground boundary is inconsistent with results that other authors have obtained in the Siberian Arctic. My Russian colleagues gave me the reference to a paper by Razumov and Dyatlov (1992) which shows that sub-sea taliks (thawed permafrost bodies) in Kolyma Bay of the East Siberian Sea are characterized by electrical resistivity from around 15 to 30 Ohms. Even changes made in response to the criticism of Reviewer #1 (responses shown on pages 1-2), assuming the range of transition between 10 and 100 Ohms, are still speculative; Ostercamp (2001) and Zykov (2007) demonstrated that in natural frozen sand, loam, clay sediments, and their combinations (in different proportions), electrical properties (electrical resistivity/electrical conductivity) can change by two-three orders of magnitude, from tens of Ohms in salty sand and sandy loam sediments to >1500 Ohms in sediments without salt. Apparently the authors do not realize that sub-sea permafrost is a highly heterogenous system which consists of a mixture of sediments (see details below), ice, and unfrozen pore fluids. Its overall physical and mechanical properties are determined by the various properties of its components and the relative proportions of those components. Because ice and unfrozen pore fluid and other physical and mechanical properties are strongly temperature dependent, any assumption remains arbitrary; only drilling can establish the rate of ice-bonded sub-sea permafrost degradation.

We do appreciate the heterogeneity of subsea permafrost, and do not contradict observations made in other areas and on other materials. As stated by rev#2, there are not enough observations from the Arctic region. We did our best to capture the range in electrical resistivity for the transition between unfrozen to ice-bonded deposits and based our analysis on available data and peer-reviewed literature. We have not attempted to identify the resistivity at which a particular sediment transitions from ice-free to ice-bonded, but to circumscribe the range of resistivities below which sediment must contain ice. This is possible because the resistivity varies by orders of magnitude, as rev#2 points out. The values cited do not contradict our interpretation.

Second, the authors did not refer to recent drilling results obtained in the same area by Chuvilin et al. (2013, 2015), which show that thawed sub-sea permafrost is separated from ice-bonded permafrost by a transition layer of ice-bearing permafrost. In opposition to the authors' speculations (lines 170-188), Chuvilin et al. have shown that the sediment core composition includes sandy clay, fine sand, loamy sand, clay and silt, medium sand, silty sand, and/or fine-medium-coarse sand.

Unfortunately, the abstract of Chuvilin et al. (2015) is not (at least online) available at the conference site (<http://www.geoquebec2015.ca>) to crosscheck the recommendation made by rev#2. Non-peer reviewed conference contributions are preferably not used as references in peer-reviewed literature. Instead we use the available data of lithology of the subsea sediments is given by Slagoda (2004) for our site and cited in the paper.

Chuvilin et al. (2013) studied a 52.2-m-long core obtained 17 km NE of Muostakh Island at a water depth of 12.5 m focusing on 'water content, density, porosity, lithology and thermal conductivity of sediments'. Unfortunately, neither information/methods on how borehole temperature data were obtained nor the profile data are given by Chuvilin et al. (2013). They report that negative temperatures of -0.15°C occurred at depths of 15 to 20 m, and of -0.3°C at depths of 40 to 45 m. The mean salt content is given as 0.5% (of the entire sample material?) without mentioning the analytical method. Lithological observations are summarized in a table as clay, loam and sand in different manifestations and mentioned in the text. To our understanding the lithological composition of their core material has no determined relation to the subsea sediments near-shore Muostakh Island. Nor do they refer to the available data from Kunitsky (1989) and Slagoda (2004). In turn, we do not see much need to refer Chuvilin et al. (2013). There is no evidence for subsea ice-bearing permafrost at this site, and Chuvilin et al. (2013) do not give any information on cryolithological properties. Therefore, the reviewer's suggestion that we refer to Chuvilin et al. (2013) to '*show that thawed sub-sea permafrost is separated from ice-bonded permafrost by a transition layer of ice-bearing permafrost*' is neither relevant nor possible. However, we added Chuvilin et al. (2013) in the Discussion section on Permafrost degradation to acknowledge the effects of thawing on the bulk thermal conductivity of submarine deposits:

"Slowing of degradation may also be the result of lower bulk thermal properties in the thawed sediment (Chuvilin et al., 2013)."

References

- Chuvilin E.M., Buhanov, B.A., Tumskoy, V.E., Shakhova, N.E., Dudarev, O.V., Semiletov, I.P.: Thermal conductivity of bottom sediments in the Buor-Khaya Basy (Laptev Sea shelf). *Earth Cryosphere*, 17 (2), 32-40, 2013 (in Russian)
- Semiletov I., Shakhova N., Dudarev O. et al. First drilling in the Ust' Lensky Rift Zone, Laptev Sea: accomplishment and preliminary results // EOS: AGU Fall Meeting, 2011, San Francisco, USA, GC51I-07, 2011.
- Slagoda, E. A.: Kriolitogennyye otlozheniya primorskoi ravniny morya Laptevykh: litologiya i mikromorfologiya (poluostrov Bykovskiy i ostrov Muostakh) - Cryolithogenic sediments of the Laptev Sea coastal lowland: lithology and micromorphology (Bykovsky Peninsula and Muostakh Island), Ekspress, Tyumen, in Russian, 2004 (in Russian).

Third, I doubt that Figure 4b, which purports to show electrical resistivity for sediment pore water (based on eq. 1) from cores recovered from boreholes 101, 304, and 305, is correct. That figure shows that electrical resistivity in frozen core 101 ranges between near zero and 5 Ohms, while electrical resistivity in unfrozen core 304 (upper part) is >20 Ohms. This nonsense could be a

consequence of using eq. 1; eq. 1 is useful for marine solutions, but the electrical resistivity of water extracts is calculated from sediments with a “terrestrial” signature (Kunitsky, 1989-cited in ms).

As also suggested by rev#3 we changed Figure 4 to improve its readability. The confusion in Figure 4b raised by rev#2 is easily explainable, since rev#2 mis-interpreted the figure. Temperature data (grey squares) referring to the lower x-axis and resistivity data (black crosses) referring to the upper x-axis. To further clarify, we added the explanation to Figure 4 caption as follows:

“Figure 4. Water electrical resistivity and temperature are shown for: (a) bottom water measured for the period 1 September 2008 – 31 August 2009 in 7.2m water depth and (b) for sediment pore water from cores recovered from boreholes 101, 304 and 305 on the dates indicated (Figs. 1 and 3; Table 1), temperature data given in grey lines and squares and electrical resistivity data is given in black lines and crosses. “

Fourth, in response to the criticism of Reviewer #1 (2nd page: “... no subsea permafrost drilling to validate the geoelectrically estimated location of the IBP surface was performed. Without the actual validation, there are always speculations about the location of the IBP surface. No right or wrong, Nobody can give a definite answer without drilling and validating the geoelectrical survey”), the authors stated: “Drilling did in fact take place in the spring following our surveys (April 2012), and could provide data for comparison. Unfortunately, the data are under embargo until published by the study’s lead author....”. That response sounds strange to me, because I attended the invited report by Shakhova (Shakhova, 2015) at the AGU-2015, in which she demonstrated the actual rate of ice-bonded permafrost degradation based on 5 boreholes accomplished by other researchers in the same area in 2012-2014;

Again, we do not feel that we can refer to non-peer reviewed conference contributions that cannot be validated by readers who were not at the conference, especially not for modern studies. Neither the presentation nor the poster are publically available. The abstract of Shakhova et al. presented at AGU 2015 does not indicate citable data but makes the statement that: *'Subsea permafrost drilling results reveal modern recently submerged subsea permafrost degradation rates, contradicting previous hypotheses that thousands of years required to form escape paths for permafrost-preserved gas.'* We therefore feel unable to facilitate this recommendation of rev#2 until the data are published, preferably in the peer-reviewed literature.

Fifth, the sentence on line 170: “No resistivities were measured on samples from this site, since no recent drilling took place” is misleading, because extensive multiyear geoelectric work (2012-2015) with validation by drilling was accomplished by Koshurnikov et al. (2015) in the same area: I saw his results presented at the AGU-2015.

The work of Koshurnikov is indubitably of importance and relevant here. As stated above, however, results presented at a conference are neither reviewed nor available to the readership of *The Cryosphere*. The abstract of Koshurnikov et al. (2015) at AGU 2015 states: *'Experimental data show that electrical properties of frozen grounds change significantly. For example, depending on ground lithology and wetness, electrical resistivity can increase up to 10^3 times upon freezing.'* This is consistent with the assumptions on which we base our work.

The bottom line is: Everything, from interpretations of the observed data to conclusions, is rather hypothetical. (I refrain from using the unfavorable word speculative). Their hypothesis is very good, but unfortunately, the drilling work is lacking. I do not think this manuscript in its current state could be published in any scientific journal.

Thank you for the positive appraisal of our hypothesis. We feel that a well-founded hypothesis tested by making and evaluating measurements in the context of the published and peer-reviewed record is exactly what *The Cryosphere* should be publishing.

References

- Chuvilin E., Bukhanov B., Grebenkin S., Tyskoy V., Shakhova N., Dudarev O., Semiletov I. Thermal conductivity of bottom sediments in the East Siberian Arctic seas: a case study in the Buor-Khaya Bay // Proc. of GeoQuebec, 20-23 September, Quebec, 2015.
- Frederick, J. M., and B. A. Buffett (2014), Taliks in relict submarine Permafrost and methane hydrate deposits: Pathways for gas escape under present and future conditions, *J. Geophys. Res. Earth Surf.*, 119, doi:10.1002/2013JF002987.
- Koshurnikov, A., A. Gunar, V. Tyskoy, N. Shakhova, I. Semiletov, and S. Valuyskiy (2015), First application of time-domain electromagnetic technology (TEM) for permafrost mapping on the Arctic shelf // AGU Fall Meeting, San Francisco, USA, 14-18 December 2015, C43A-0767. 2015.
- Ostercamp T. E. (2001), Sub-sea permafrost, 2902-2912
- Razumov S., and V. Dyatlov (1992), Strukturno-geologicheskie i geokriologicheskie usloviya rasprostrateniya i razgruzki podzemnykh vod na shelfe Vostochno-Sibirskogo morya. In: *Formirovaniye podzemnykh vod kriolitozoni*, Yakutsk, Yakutsk Permafrost Institute, p.80-92
- Shakhova, N. (2015), Methane release from the East Siberian Arctic Shelf: The role of subsea permafrost and other controlling factors as inferred from decadal observational and modeling efforts // AGU fall Meeting, San Francisco, USA, 14-18 December 2015, C33F-01. 2015.
- Zykov, Yu. D. (2007), *Geofizicheskie metody issledovaniya kriolitozoni*, Moscow, Moscow State University Press.
- Chuvilin E.M., Bukhanov, B.A., Tyskoy, V.E., Shakhova, N.E., Dudarev, O.V., Semiletov, I.P. (2013) Thermal conductivity of bottom sediments in the Buor-Khaya Basy (Laptev Sea shelf). *Earth Cryosphere*, 17 (2), 32-40 (in Russian)

PS. Note for authors: Having Russian co-authors makes it easy to obtain publications in Russian as cited above; I did so for many years.

rev#3 comments to the Author:

The authors have greatly improved the manuscript and now there is an adequate discussion of the uncertainties. It is possible to publish the paper as is, however it would be also great to make some minor improvements:

Thanks for your effort and advice that greatly improved the presentation of our study.

1) It is a bit unclear on page 7, Line 225 what the authors mean under "and set the uncertainty to an arbitrary 1m".

We have changed this sentence and the preceding one to:

"The uncertainty in z_{pf} derived from resistivity profiles corresponds to the uncertainty of the depth of investigation of the geoelectric method. We have chosen a range of resistivities to cover the transition from unfrozen to frozen sediment (10 to 100 Ohmm), so that the range of depths associated with this transition corresponds to the uncertainty in the determination of z_{pf} ." which we hope is clearer and better explains how the uncertainties changed after the first review of the paper.

2) I agree with authors it is hard to estimate the uncertainty in the rate of coastal erosion. It would be interesting to see how the results would change if the erosion rate is assumed to be doubled for the period before 1950s. This would sufficiently cover the uncertainty and put horizontal and vertical error bars for the boreholes estimates on figure 7.

As requested in the previous review, we have replaced the error bars for the electrical resistivity measurements on Figure 7 with a range of values corresponding to the ranges in Figures 3 and 6. We have adopted the suggestion to re-draw our vertical and horizontal error bars for boreholes on Figure 7. We added the following sentence to the methods section:

"Uncertainty in period of inundation and degradation rate was calculated by assuming double the mean long-term erosion rate for the period prior to 1951 for each borehole position."

3) Please improve the quality of figure 4, crosses are barely distinctive from squares.

This issue caused problems for reviewer #2 as well. We changed Figure 4 to improve its readability by changing symbols and increasing their size.

Summary
02.06.2016 15:16:16

Differences exist between documents.

New Document:

[Muo_20160601](#)

28 pages (51.84 MB)

02.06.2016 15:14:01

Used to display results.

Old Document:

[Muo_20160219](#)

28 pages (86.82 MB)

02.06.2016 15:13:22


[Get started: first change is on page 1.](#)


No pages were deleted

How to read this report

Highlight indicates a change.

Deleted indicates deleted content.

 indicates pages were changed.

 indicates pages were moved.

Coastal dynamics and submarine permafrost in shallow water of the central Laptev Sea, East Siberia

Paul Overduin¹, Sebastian Wetterich¹, Frank Günther¹, Mikhail N. Grigoriev²,
Guido Grosse¹, Lutz Schirrmeister¹, Hans-Wolfgang Hubberten¹, and
Aleksandr Makarov³

¹ Alfred Wegener Institute Helmholtz Center for Polar and Marine Research, Potsdam, Germany

² Mel'nikov Permafrost Institute, SB RAS, Yakutsk, Russia

³ Arctic and Antarctic Research Institute, St. Petersburg, Russia

Correspondence to: P. P. Overduin (paul.overduin@awi.de)

Abstract. Coastal erosion and flooding transform terrestrial landscapes into marine environments. In the Arctic, these processes inundate terrestrial permafrost with seawater and create submarine permafrost. Permafrost begins to warm under marine conditions, which can destabilize the sea floor and may release greenhouse gases. We report on the transition of terrestrial to submarine permafrost at a site where the timing of inundation can be inferred from the rate of coastline retreat. On Muostakh Island in the central Laptev Sea, East Siberia, changes in annual coastline position have been measured for decades and vary highly spatially. We hypothesize that these rates are inversely related to the inclination of the upper surface of submarine ice-bonded permafrost (IBP) based on the consequent duration of inundation with increasing distance from the shoreline. We compared rapidly eroding and stable coastal sections of Muostakh Island and find permafrost-table inclinations, determined using direct current resistivity, of 1 % and 5 %, respectively. Determinations of submarine IBP depth from a drilling transect in the early 1980s were compared to resistivity profiles from 2011. Based on borehole observations, the thickness of unfrozen sediment overlying the IBP increased from 0 up to 14 m below sea level with increasing distance from the shoreline. The geoelectrical profiles showed thickening of the unfrozen sediment overlying ice-bonded permafrost over the 28 years since drilling took place. We use geoelectrical estimates of IBP depth to estimate permafrost degradation rates since inundation. Degradation rates decreased from over 0.4 m a^{-1} following inundation to around 0.1 m a^{-1} at the latest after 60 to 110 years and remained constant at this level as the duration of inundation increased to 250 years. We suggest that long-term rates are lower than these values, as the depth to the IBP increases and thermal and pore water solute concentration gradients over depth decrease. For the study region, recent increases in coastal erosion rate and changes in benthic temperature and salinity regimes are expected to affect the depth to submarine permafrost, leading to coastal regions with shallower IBP.

1 Introduction

Submarine permafrost refers to solid earth material below modern sea level that has perennial temperatures below 0 °C. It contains and traps significant amounts of methane and organic carbon, which may be released to the atmosphere during permafrost warming and thawing (McGuire et al., 2009), if it is not oxidized before it reaches the seabed (Overduin et al., 2015). Cold sediment temperatures stabilized by shelf permafrost extend the gas-hydrate stability zone (Dallimore and Collett, 1995) and the frozen sediment may limit gas diffusion into the water column and atmosphere (Shakhova and Semiletov, 2007). Despite its importance, little of what we know about submarine permafrost distribution and temperature is based on direct observation, especially on the East Siberian shelves, which make up over 80 % of the potentially permafrost-affected arctic shelf area (Brown et al., 2001).

Most submarine permafrost originally formed as terrestrial permafrost on arctic shelves, exposed during late Pleistocene cold periods, which was subsequently inundated by rising sea levels following the last glacial period. Even today, rapid coastal retreat along the ice-rich coastline of the Laptev and East Siberian shelf seas causes about 10 km² of land loss annually (Grigoriev, 2008). Deglaciation after the Last Glacial Maximum led to sea-level rise in the Laptev Sea region more than ten times as rapid as modern rates (Bauch et al., 2001), inundating most of the more than 1.5 million km² East Siberian shelf region within several thousand years. Both processes (coastal erosion and sea-level rise) covered cold (less than –2 °C at the seasonal damping depth) and thick (hundreds of meters) permafrost with sea water and seasonal sea ice, separating it from the cold air with mean annual temperatures of less than –10 °C. In the coastal zone (shallower than 10 m) of the Laptev Sea, bottom temperatures currently range from 1.6 °C in summer to –1.4 °C in winter (Dmitrenko et al., 2011). After inundation, submarine permafrost began to equilibrate thermally with benthic temperatures. This temperature increase resulted in warming and thawing of permafrost below the sea-bed (Lachenbruch, 1957). Thawing also occurred due to penetration of salt-water into the seabed, which lowered the freezing point of the sediment's pore water. Thus, modern submarine permafrost can have temperatures below 0 °C but contain little or no ice. What is generally observed, by geophysical methods or direct observation in sediment cores, is the depth of ice-bonded permafrost (IBP) below the sea floor (which is equivalent to the thickness of the overlying unfrozen sediment). Direct current resistivity and controlled source electromagnetic techniques for the investigation of submarine permafrost have been established in a number of studies (Barnes, 1963; Constable, 2010; Corwin, 1983; Sellmann et al., 1989). Laboratory measurements of the bulk electrical properties of frozen porous media show the effect of ice content and thus saline pore water on electrical resistivity (Overduin et al., 2012). Sediment bulk electrical resistivity increases by orders of magnitude between ice-bonded, freshwater sediment and ice-free, saline sediment (Scott et al., 1990), making it suitable for the detection of the ice-bonded permafrost table.

Benthic temperature and salinity control warming of the sea floor and the rate of salt penetration into the sediment column, but there are number of processes active in shallow water near the

coastline that additionally affect permafrost following inundation. Sedimentation of eroded material, sediment re-suspension and transport by wave action and by currents and the entrainment of suspended material and sediment in sea ice are important in determining initial rates of degradation in water depths where wave cycles and ice gouging can turbate and erode the sea bed. Where the water depth is less than the maximum sea ice thickness, bottom-fast ice (BFI) forms (Solomon et al., 2008). Sea ice has a higher thermal conductivity than sea water, and BFI thermally couples the sea floor to the cold winter air temperatures, which can lead to seasonal freezing of the sediment and the injection of brines into the sediment (Harrison, 1982). Since the rate of coastal erosion affects sediment flux, and therefore bathymetry, submarine permafrost degradation rates following inundation are related to coastal erosion.

Our objective is to use inundation periods inferred from remote sensing, geophysical surveys and borehole observations of IBP to investigate the relationship between coastal erosion and submarine permafrost degradation beneath the shoreface

2 Study area

Muostakh Island (71.58° N, 130.01° E), a sliver of land about 40 km offshore of Tiksi in the Central Laptev Sea (Fig. 1), is an ideal site for the study of submarine permafrost processes (Are, 2003). About 10 km long and less than 500 m wide, the island is located 25 km north-east of the mainland and 15 km south-east of Bykovsky Peninsula. Ships leaving Tiksi, one of the major ports on the Northeast Passage, travel within sight of Muostakh Island, and it has therefore long been an object of research, from as early as the late 19th century. This research includes studies of coastal dynamics, and coastline erosion rates observed at Muostakh Island in the Central Laptev Sea include some of the highest observed in the Arctic (Grigoriev et al., 2009). The island was originally the south-eastern continuation of the Bykovsky Peninsula coast and consists mainly of late Pleistocene Ice Complex (IC) deposits. IC deposits are ice-rich (Muostakh Island is composed of 87 % ground ice by volume; Günther et al. (2015)), polygenetic in origin, and characterized at the ground surface by the polygonal network of ice wedges formed over thousands of years by melt-water infiltration into cold winter thermal contraction cracks (Schirrmeister et al., 2011b). Coastal thermo-erosion on Muostakh Island varies widely in intensity (from close to 0 to over 25 m a⁻¹) over a relatively small region (Grigoriev et al., 2009; Günther et al., 2015). The spatial variability of coastal retreat rates along the island's coastline offers an opportunity to investigate its influence on submarine permafrost development while other aspects of environmental forcing are similar.

IC coastlines are prevalent throughout much of the Laptev and East Siberian seas. On Muostakh Island, IC deposits are exposed along the east coast from below sea level up to the island's surface. Much of the Chukchi and Beaufort seas coastlines are similarly ice-rich and can be expected to be subject to the same mechanisms of geomorphologic change in response to shifts in environmental

drivers of coastal dynamics (Ping et al., 2011). Regionally, relevant shifts in the energy and water balances at the land-atmosphere interface (Boike et al., 2013), increases in Lena River discharge (Fedorova et al., 2015), and increases in the duration of open water and coastal erosion (Günther et al., 2015) have been recently observed, matching similar circumpolar observations (Barnhart et al., 2014).

3 Materials and methods

3.1 Geodetic measurements of coastline position

Coastal change rates on Muostakh Island have been estimated since the early 1950s by combining on-site and remote sensing methods (Fig. 2; Grigoriev et al. (2009)). A geodetic benchmark was established near the northern end of the island in 1950. Measurements were made at irregular intervals thereafter, by measuring the distance from the geodetic benchmark to the top of the coastal bluff along various bearings, either with measuring tape or a theodolite. The coastline positions reported here were measured as the position of the upper edge of the coastal bluff along a bearing from the geodetic benchmark and the signal tower on Cape Muostakh, at the southern end of the Bykovsky Peninsula. Since there were unrecorded differences from year to year in how measurements were carried out, it is difficult to assess uncertainty in the measurements. Sources of uncertainty include determination of the direction in which coastal position was measured, small differences in time of year for measurements, and difficulty in safely reaching the cliff edge. We conservatively estimate the measurements to be better than ± 0.5 m. Between measurements in 2010 and 2011, the geodetic reference point was toppled by coastal erosion. For purposes of continuity, a network of survey points was established by theodolite in 2011 immediately thereafter to make a continuation of the measurement series possible. Ground control points were established to align field observations with remote sensing data (Günther et al., 2013).

3.2 Temperature and electrical resistivity

Benthic temperature and electrical conductivity were recorded using a bottom-moored conductivity (± 0.1 mS cm⁻¹), temperature (± 0.2 °C) and water depth (± 0.2 %) (CTD) datalogger. The CTD datalogger (Minilogger, UIT Umwelttechnik GmbH) was mounted on a metal plate and deployed with two 50 m cables attached to anchors. By dredging with a cat's claw anchor after deployment, the cables could be snagged and the datalogger recovered. The datalogger was deployed at 71.672° N, 129.996° E in 7.2 m water depth on August 10, 2008, just outside of the north-eastern corner of the frame for figure 2. Data were collected hourly between September 1, 2008 and August 31, 2009. Although electrical conductivity values were measured and recorded, the inverse value (electrical resistivity) is reported here for comparison to the results of the geoelectrical surveys.

3.3 Core and borehole data

130 Sediments of on-shore and off-shore permafrost north of Muostakh Island were drilled during the Northern Expedition of the Siberian Branch of the Soviet Academy of Sciences (SBSAS) Mel'nikov Permafrost Institute Yakutsk in 1982 and 1983. Six boreholes were sunk up to 54 m depth and 2.5 km off the shore (in 1983) along a straight line across the shallow water zone between Cape Muostakh at the southern end of the Bykovsky Peninsula and the northern cape of Muostakh Island (Kunitsky, 135 1989; Slagoda, 2004). The boreholes were drilled using a portable rotary drill rig and a dry drilling technique. Metal casing was drilled through the sea ice, water column and into the sediment to prevent water from entering the borehole. Temperature and geochemical data are summarized by Kunitsky (1989) while granulometric, cryolithologic and mineralogic data are presented by Slagoda (1993, 2004). Results from these publications, originally in Russian, are made available here to 140 a non-Russian readership. Observations made during drilling from the land-fast ice in spring and during laboratory investigation of the cores included sediment temperature and lithology, and pore-water salinity. Borehole temperatures were measured in 1982 and 1983 using a thermistor string and a voltmeter. Sediment porewater from cores was analyzed for total dissolved solids, which was converted to electrical resistivity based on the resistivity of a sodium chloride solution:

$$145 \quad R = 0.55 \cdot TDS - 0.97 \quad (1)$$

where R is the electrical resistivity in Ωm and TDS are the total dissolved solids in g per 100 solution. Locations of boreholes, their depths, water depth and the depth of the unfrozen/frozen interface beneath sea level are summarized in Table 1.

3.4 Electrical resistivity and time of inundation

150 Geoelectric surveys of submarine apparent resistivity collected on August 21-24, 2011 were combined with bathymetry measurements to invert for sub-bottom sediment resistivity, which gives an indication of the depths of saline sediment and of the underlying ice-bonded submarine permafrost. The results from three surveys are presented here, two profiles of 1.5 km length from the eastern and western coasts of the northern cape of Muostakh Island, as well as a profile of 4 km length along 155 the historical borehole profile (Fig. 1). The sub-bottom apparent electrical resistivity profiles were collected using an IRIS Syscal ProTM Deep Marine system. Voltages were measured around an electrical current injection dipole of 10 m size, using a floating electrode streamer towed behind a small boat. The injection and potential electrodes were stainless steel plates (10×30 cm). Electrical potential was measured across 10 channels spanning between 20 and 110 m. Electrode position (relative 160 to a GPS aboard the boat), the injection current, measured electrode pair potentials and water depth (using an echo-sounder with better than ± 0.1 m resolution attached to the boat) were recorded at intervals of at least 2 m as the array was towed. We used RES2DINVTM software to invert the apparent resistivity data via least-squares inversion for floating electrodes with a modelled water-layer resis-

tivity, allowing for a sharp change in modelled resistivity across sediment surface. Model resistivity was smoothed to produce reasonable variations in the resistivity values. Prior to inversions, data values were inspected graphically and less than 0.1 % of collected apparent resistivities were identified as outliers and removed. Inversions required less than five iterations in order to reach better than 5 % RMS error between modelled and observed resistivity. Relating estimated sediment resistivity to ice content requires either measurements on sampled sediment or some rather arbitrary assumptions.

No resistivities were measured on samples from this site, since no recent drilling took place. Some literature values for sediment resistivity as a function of temperature, salinity and ice content exist. Kang and Lee (2015), for example, show an increase in electric resistivity on freezing for silt-sand mixtures with 40 % saturation from around 100 Ωm to over 300 k Ωm . For 100 % saturated mixtures with saline pore water, the resistivities can be expected to be around 4 to 10 times lower (Kang and Lee, 2015). Laboratory measurements of saline silty and sandy sediment, similar in grain size distribution to those at Muostakh Island, show that ice is present in the sediment for bulk resistivities over 10 Ωm (Overduin et al., 2012), although the boundary between ice-free and ice-bonded sediment may not be sharply defined, so that resistivity changes gradually with depth. We consider that any sand-silt mixture that is ice-bonded with fresh porewater, as is the case here based on the pore water concentrations from the drilling samples, and consistent with previous observations of submarine permafrost in the Laptev Sea, will have a resistivity not lower than 10 Ωm , and probably higher than 100 Ωm . This assumption is also based on laboratory measurements of bulk resistivity as a function of temperature and salinity for marine sediments which show that the change in bulk sediment resistivity from an unfrozen seawater-saturated sediment to a frozen ice-saturated sediment corresponds to a jump in resistivity from less than 10 to over 100 Ωm (Frolov, 1998; King et al., 1988; Overduin et al., 2012). Uncertainties in IBP depth estimated from resistivity profiles thus correspond to the depth range of the bulk sediment resistivity increase from 10 to 100 Ωm .

Mean submarine permafrost degradation rate was **calculated** as the quotient of the depth to IBP (z_{pf}) and the time of erosion (t_0 ; time of inundation). z_{pf} was either observed in sediment recovered from the boreholes, or was inferred from geoelectric inversions using the depth of the 10 and 100 Ωm isopleths. The time since inundation was determined using coastlines digitized from remotely sensed imagery. In addition to the remote sensing dataset used by Günther et al. (2015), we increased temporal resolution by adding coastal erosion observations based on a CORONA KH-4B satellite image dating from July 24 in 1969, a HEXAGON image from July 17, 1975, and a SPOT-4 image taken on July 1, 2001. After stitching image tiles of the CORONA and HEXAGON images and pan-sharpening of the SPOT scene, each image was orthorectified to mean sea level using specific sensor models. In contrast to on-site measurements of the upper coastal bluff edge, we digitized the cliff bottom line as the location where inundation occurs in the form of thermo-abrasion (Are, 1988). For consistency with the 1983 drilling campaign, as an important baseline, the coastline of 1983 was reconstructed based on an interpolation between digitized coastlines from high resolution aerial

and satellite images (1951, 1964, 1969, 1975, 2001, 2010 and 2011). Taking digitized coastlines as isolines of equal time, we estimated the time of inundation (t_0) at the location of each sounding in 2011. Given a mean coastal erosion rate of 1.8 m a^{-1} on Muostakh (Günther et al., 2015), interpolation was done to a raster size of 2 m, corresponding to a resolution of at least 1 year. However, our
 205 geoelectric transects are concentrated around the northern cape, where more rapid erosion is taking place, resulting in an almost monthly resolution. For two of the transects, some of the geoelectric measurement sites lay within the region flooded by sea water since 1951 (83 soundings from the borehole profile and 337 from the eastern transects). We calculated the period of inundation (t_{sub}) at the location of each sounding as:

$$210 \quad t_{sub} = t_{obs} - t_0 \quad (2)$$

where t_{obs} is the time of observation (2011) and t_0 the time of inundation raster cell value. This yields a mean rate of submarine permafrost degradation for this period of:

$$r_{deg} = \frac{z_{pf}}{t_{sub}} \quad (3)$$

Uncertainties in degradation rates derive from uncertainties in t_{sub} and z_{pf} . The former are better
 215 than 1 year, based on the resolution of the shoreline rasterization. For the set of permafrost observations within the region for which remote sensing data exist, the positions of z_{pf} estimates for degradation rates are not based on extrapolation of coastal erosion rates from the current coastline, but on interpolation of coastline position between observations. Variations of coastal erosion rate on shorter time scales (the longest averaging period was 26 years between 1975 and 2001) may have
 220 occurred as observed by Lantuit et al. (2011) on the Bykovsky Peninsula but cannot be quantified for Muostakh. **Uncertainty in period of inundation and degradation rate was calculated by assuming double the mean long-term erosion rate for the period prior to 1951 for each borehole position.** Uncertainty in z_{pf} for borehole determinations was set at 0.5 m to allow for tidal variations ($<0.3 \text{ m}$), sea level rise and uncertainty in determining core sediment depth in the borehole (estimated at better
 225 than 0.1 m). **The uncertainty in z_{pf} derived from resistivity profiles corresponds to the uncertainty of the depth of investigation of the geoelectric method. We have chosen a range of resistivities to cover the transition from unfrozen to frozen sediment (10 to 100 Ωm), so that the range of depths associated with this transition corresponds to the uncertainty in the determination of z_{pf} .** Nautical charts of the early 1980s showing points of bathymetry measurements every 500 m and isobaths with an
 230 equidistance of 2 m were digitized and interpolated for the coastal waters around Muostakh Island, in order to account for shoreface profile changes.

4 Results

4.1 Shoreface morphology

Figure 1 shows coastlines of Muostakh Island from two different points in time. Based on data from Grigoriev et al. (2009), the mean erosion rates for the northern cape of Muostakh Island for the period of record (1951-2014) was 10.7 m a^{-1} with variations between 2 and 25 m a^{-1} (Fig. 2). This value includes multiple-year periods for which erosion rate was determined using remote sensing data. Observations between 1995 and 2014 were conducted in the field, and give a mean erosion rate of 10.2 m a^{-1} . Longer-term coastal erosion rates of over 10 m a^{-1} decreased to less than 5 m a^{-1} in 1984 and then fluctuated between 2 and 10 m a^{-1} until 2006. In 2006/2007, rates at the northern cape increased to 25 m a^{-1} . The three periods with the most rapid rates were observed in the past nine years (2006–2007, 2007–2009, 2010–2011). Rates of coastal retreat along the eastern shore of the island reported by Günther et al. (2015) confirm recent higher rates of erosion relative to the long-term means. In that context, the rates shown here are more indicative of the increased rates of land loss at the exposed cape than of changes in erosion rates for the island as a whole. For example, the western coast of Muostakh Island has had mean coastal erosion rates of less than 1 m a^{-1} (Fig. 1) for the past 60 years. The mean annual rates of erosion where the digitized coastlines intersected with the geoelectric profiles on the western and northeastern sides of the island over the period 1982-2011 were 0.5 m a^{-1} and 6.5 m a^{-1} , respectively, resulting in the inundation of 14 m (western shore) and over 180 m (eastern shore) of land over this period.

Based on positions reported in the field notes of the drilling campaigns (Kunitsky, 1989) core positions were charted and used to define the position of the northwestern geoelectrical resistivity profile (Drilling profile in figure 1). Due to coastline retreat, the southern 1.4 km of this resistivity profile corresponded to what had been land at the time of coring in 1983, 645 m of which were within the drilling profile (Fig. 1). The altitude of the coastal bluff in 1983 exceeded 20 m asl (Fig. 3). Bathymetric profiling was used to survey modern water depths and comparisons showed that shoreward of 2 km in the historical data (Fig. 3), coastal retreat resulted in the erosion of the coastal bluff and eroded the shoreface profile, increasing water depths by up to 3 m. Changes in the bathymetric profile over 30 years from about 1.8 km out to 4 km were less than 0.4 m and probably within the uncertainty generated by interpolation of the historical bathymetry and by changes in water level. According to Kunitsky (1989), in 1983, water shallower than the thickness of the annual sea-ice cover extended out to around 150-200 m from the shore, corresponding to the extent of the BFI zone which is separated from land-fast ice by cracks in sea ice. The intertidal zone exposed at low water levels and submerged at high-water levels resulted in a foreshore zone width of up to 180 m, where sea ice freezes to the bottom and isolated pockets of saline water up to 41 ‰ may collect (Kunitsky, 1989). Along the drilling profile, the unfrozen sediment layer increased in thickness from this border

towards the sea, while landwards and in sand bars a seasonally frozen layer developed (Fig. 3, upper profile). In 2011, the mean depth along the entire profile was 2.76 m (Fig. 3, lower profile).

4.2 Water temperature and resistivity

270 Benthic water electrical conductivity and temperature measured between September 2008 and September 2009 in 7.2 m water depth directly before the east coast of the northern end of the island (Günther et al., 2013) varied strongly seasonally (Figs. 4a). Bottom water temperature dropped from over 8 °C on September 1 to negative temperatures by October 16, 2008. During most of this period, bottom water resistivity also fell, from peak values of 35 Ωm to less than 2 Ωm. At the end of the period of observation, from July 28 until the end of August in 2009, variations in temperature and resistivity fell within a similar range of values. After the late summer cooling period, from mid-October until the beginning of July, temperatures are below −0.8 °C and resistivity is below 3 Ωm. In June, bottom water began to freshen at temperatures below −1 °C, eventually reaching summer values. In the early summer, following breakup of the sea ice, high resistivity (>15 Ωm) bottom water varied in temperature, reaching peak values of 12 °C.

Beneath the sea ice, from the end of October until after mid-May, bottom water electrical resistivity was below 1.7 Ωm (i. e. above a conductivity of 6 mS cm^{−1}), whereas the influence of the Lena River discharge increased this value up to over 10 Ωm (corresponding to electrical conductivity below 1 mS cm^{−1}) for the early summer (June). In July, the freshwater at the sea bed warmed to over 10 °C. Winter resistivity varied less than 0.5 Ωm, whereas open-water season resistivity (July to mid-October) varied between 0.1 and 30 Ωm. The mean annual bottom water temperature was 2.1 °C, and the mean annual bottom water resistivity was 10 Ωm (corresponding to electrical conductivity of 0.09 mS cm^{−1}).

The water in Buor Khaya Bay is generally stratified, with a brack-water overlying colder saltier water. This position of this interface between the layers changes with time, in response to varying fluvial discharge rates and sea ice melting and freezing, and as a result of storm-generated mixing (Günther et al. (2013)) but is usually lower than 7 m bsl in summer. Geoelectric resistivity surveys took place in shallow water not subject to stratification. Seven surface water samples were collected during surveys on August 20 and 24, 2011. Their electrical conductivity was measured on the same day and ranged between 0.6 to 1.7 Ohm m. Based on these values, we used values of 0.65, 0.98 and 0.90 Ωm for the western, drilling and eastern profiles, respectively.

4.3 Permafrost properties

The permafrost of Muostakh Island belongs to late Pleistocene Yedoma IC deposits that accumulated in the region between at least 46.8 and 19.5 ka BP based on radiocarbon ages (Schirrmeister et al., 2011a). It is overlain by a Holocene peat cover (Fig. 3). The IC is characterized by the occurrence of syngenetic ice wedges embedded in ice-rich silts and sands, peat horizons, and a considerable overall

amount of organic carbon (total organic carbon content of up to 5 % by weight; Schirrmeister et al. (2011a)). The oldest IC deposits lie up to 10 m below modern sea level at Muostakh Island and are underlain by silts, sands and gravels interpreted as fluvial deposits of Pliocene to Early Pleistocene age (Fig. 3; Slagoda (2004)). Syngenetic ice wedges of former polygon tundra are up to 5 m wide and up to decameters deep. Intrasedimentary ice occurs in horizontal to subhorizontal ice bands, ice lenses, and ice cement. Ice wedges defined as macro ground ice by Günther et al. (2015) constitute up to 44 ± 4.6 vol %. Intrasedimentary ice adds another 43 vol % to the total ice content and sums up to 87 vol % (Günther et al., 2015). Along both sides of the island, this high ground ice content renders the coastline susceptible to thermo-erosion. Thermokarst mounds (baidzherakhs) are left over when ice wedges melt, leaving these former polygon centers of the Yedoma IC preserved on the coastal bluff. They exist on both coasts of Musotakh island, which is underlain everywhere by Yedoma and shaped by Holocene thermokarst features, including an alas (former lake basin) that intersects the western coast midway up the island (Fig. 5).

Assuming the same geological subsurface of the island, i.e. mainly Yedoma IC, the different shape of the island's eastern and western shore is controlled by intensity of coastal erosion. As intensively studied by Günther et al. (2015) the interplay of thermo-denudation and thermo-abrasion efficiently erodes the north-eastern coast while the western coast appears almost stable. Strong winds occur mainly during the winter season from S to SW direction when the sea is ice-covered (Günther et al., 2015) and have therefore no impact on coastal retreat. Due to its location close to the mainland coast, the maximum fetch from S to SW during the sea-ice free period is less than 50 km while the fetch from N to NE is nearly unlimited (Günther et al., 2015). The latter is of importance during the sea ice break-up when wind events prevail from N to NE directions, and cause rising water level and constant heavy swells that promote marine abrasion (thermo-abrasion).

4.4 Borehole observations

In the following analysis, we report borehole observations and geoelectric surveys with reference to depths or elevations relative to sea level. Since sea-level changes over time, these results are not directly comparable. However, tidal variations around Tiksi are generally less than 10 cm, although storm surges can lead to larger changes in sea level, up to ± 0.6 m. The net change in mean annual sea level recorded three times per month at the Tiksi tide gauge between May 1983 and August 2011 was 0.12 m (data from Arctic and Antarctic Research Institute, St. Petersburg, accessed at www.whoi.edu/science/po/arcticsealevel/laptev.html on March 16, 2015).

Borehole temperatures are available for the cores 101, 304 and 305 obtained after drilling in May 1982 and June 1983 (Fig. 4b; Kunitsky, 1989). The on-shore core 101 shows the cold-temperature regime of terrestrial permafrost with almost stable ground temperatures of about -9°C at the time of measurement that decrease slightly due to the seasonal winter signal in the upper 10 meters of the sediment (Fig. 4b). Both off-shore cores 304 and 305 have temperatures that increase upwards from

about -2°C at the borehole bottoms to 0°C at the sediment surface. Saline sea water lowers the pore water freezing temperature and decreases the resistivity in the upper part of the profile (Fig. 4b).

340 The boundary between IBP and ice-free (unfrozen) permafrost lay at a depth of 8.3 m bsl in core 304 and 16 m bsl in core 305. No boundary was encountered in core 101, which was frozen throughout. The IBP in the offshore boreholes was up to 7°C warmer than temperatures measured in borehole 101 at the shoreline. ▲▲▲

▲4.5 Profiles of electrical resistivity and bathymetry

345 The results from three surveys conducted between August 21 and 24, 2011 are presented here. Two profiles of 1.5 km length perpendicular to the eastern and western coasts of the northern cape of Mustakh Island, as well as one longer profile (4 km) along the borehole profile drilled 28 years earlier (Figs. 1, 3 & 6; borehole 101 was drilled 29 years before surveying). Inverted bulk-sediment resistivities reached maximum values of $182\ \Omega\text{m}$ for the western profile, $180\ \Omega\text{m}$ for the drilling profile and $1300\ \Omega\text{m}$ for eastern profile. The depth to any of the isopleths of constant resistivity (e.g. 0, 40, 350 70, etc. Ωm) in 2011 was greater at each point along the drilling profile than observed in 1983. The range of values defined as containing the transition from thawed to frozen sediment (10 to $100\ \Omega\text{m}$) descended with distance from the coastline and extended beyond the maximum depth of the inversions from 220-500 m along the western profile, beyond 1050 m for the drilling profiles and beyond 355 1065 m for the eastern profile. The of depths corresponding to this transition zone at the locations of cores 101, 304 and 305 were 5.9 to 17.4 m bsl, 9.8 to >19 m bsl and 18 to >19 m bsl determined using geoelectric soundings in 2011 (Fig. 3). The depth of the $10\ \Omega\text{m}$ contour shows more variability with distance from the coastline than in either of the other profiles. There are two pronounced dips of more than 4 m, between borehole locations 302 and 303 and beyond borehole location 304. 360 Deeper contour lines no longer show this variability in depth. The $25\ \Omega\text{m}$ dips from 8.4 to 16.8, 17.0, 16.0, 17.9 and to more than 19 m depth at the borehole locations. Differences between the position of the IBP observed in sediment recovered from the boreholes and the $25\ \Omega\text{m}$ (normalized to period of inundation) increase from $0.3\ \text{m a}^{-1}$ at borehole 101 to $0.5\ \text{m a}^{-1}$ at boreholes 301 and 302, and then decrease further offshore to $0.3\ \text{m a}^{-1}$ at boreholes 303 and 304 and to $0.1\ \text{m a}^{-1}$ at borehole 365 305. If we arbitrarily choose the $25\ \Omega\text{m}$ as a proxy for IBP, then these rates correspond to submarine permafrost degradation rates. Choosing other values would give somewhat different rates, but the trend observed would be the same.

For geoelectric soundings within the 1951 coastline, we linearly interpolated coastline positions from remote sensing imagery to geoelectric sounding position to estimate the period of inundation at each sounding. Figure 7 shows inferred mean submarine permafrost degradation rates since in- 370 undation as a function of these periods for soundings along the drilling profile and eastern profile. Since no interim determinations of IBP table depth were made since inundation, these degradation rates are mean rates for the period of inundation ending in 2011. Instantaneous rates of degradation

at or nearer to the shore line are probably higher. Results indicate that initial submarine permafrost degradation rates following inundation range between 0.4 to over 1.0 m a^{-1} (using 10 and 100 Ωm isopleths), and that rates decrease over time, reaching a mean values between 0.1 and 0.3 m a^{-1} sixty years after inundation. Assuming that the long-term erosion rate at the northern cape represents the mean rate since inundation, we can infer the duration of degradation for the borehole locations. In this case, the periods of inundation for boreholes 101, 304 and 305 were about 28, 112 and 253 years, respectively. Rates thus inferred were 0.18, 0.09 and 0.10 m a^{-1} (Fig. 7).

5 Discussion

5.1 Permafrost degradation following erosion

As coastal retreat progresses, the rate of IBP degradation slows (Hutter and Straughan, 1999). Are (2003) suggests using the distance from shoreline to approximate a time scale of inundation. Following this approach, the time of submergence at any point along the geoelectric profiles can be calculated based on the assumption that the longest available record of mean erosion rates (here observed over the past sixty years) provides the best approximation for long term mean annual erosion rates. The decrease in degradation rate with prolonged period since inundation is visible in our geoelectric profiles as a steeper inclination of the IBP table closer to shore (Fig. 6). The length of inundation of points distal to the island are approximately 260 years on the eastern profile, and closer to 3500 years of erosion on the western profile (based on profile length of 1700 m and coastal retreat rates of 0.5 and 6.5 m a^{-1} , respectively). Using the positions of the geoelectrical soundings for which date of inundation can be inferred, there is a decrease in the rate of degradation over time (Fig. 7). Nixon (1986) models a mean degradation rate of 0.1 m a^{-1} after 50 years of degradation for sediments with a freezing point of -1.8°C ., matching the observations from the geoelectrical soundings shown in figure 3. Grigoriev 2008 shows a mean degradation rate of 0.05 m a^{-1} for 12 profiles of IBP for the Laptev and East Siberian Seas, with a range between 0.01 and 0.15 m a^{-1} . Over the long term, Nixon's 1986 model and these results show a decrease in degradation rate to levels less than 0.1 m a^{-1} , as the thermal and solute concentration gradients between the sea floor and the IBP table become less and less steep, decreasing fluxes of heat and salt, respectively.

Studies in Siberia and Alaska have shown that submarine permafrost degradation is most rapid following inundation, when the thickness of the unfrozen sediment layer overlying the IBP is small, and thermal and diffusion gradients are steepest (Are, 2003; Harrison, 1982). Slowing of degradation may also be the result of lower bulk thermal properties in the thawed sediment (Chuvilin et al., 2013). Figure 7 shows an asymptotic reduction in degradation rate as the length of inundation increases. The permafrost temperatures reported by Slagoda (2004) show warming of permafrost by almost 9°C within the first 100 years of inundation (Fig. 4b), up to the freezing temperature of the pore space solution. Based on coastal erosion rates for a four-year period, Molochushkin (1978) estimates that

warming of the permafrost off the eastern shore of Muostakh Island occurs at $0.4^{\circ}\text{C a}^{-1}$ over the first 10 years, but at an average rate of $0.25^{\circ}\text{C a}^{-1}$ for the first 30 years at a depth of 10 m below the sea floor.

5.2 Comparing profiles

Muostakh Island was chosen as our field site for studying submarine permafrost degradation because its coastal retreat rate varies widely within a small area, over which larger scale drivers, such as air temperature, sea ice cover and storm events, can be assumed to be similar. Obvious differences between the eastern and western coasts include the orientation of the coastline, the potential maximum fetch before each coast, and the relative influence of riverine water and alongshore currents. Mean coastal retreat rates on the western and eastern shores of the island have differed by a factor of 13 for the past decades. Along both shores, thermo-abrasion of the submarine shoreface results in offshore transport of sediment, creating a concave submarine profile shape from the waterline out to about 1 km from shore. In contrast, mean water depth along the drilling profile was more than 2.5 m based on bathymetry measured during geoelectric surveying, throughout the profile. Although we could find no local sea ice thickness data for Muostakh Island, this exceeds probable maximum sea ice thickness. Ice thickness of 2.1 m was observed within 1 km of the coastline on the eastern shore of Buor Khaya Bay at the end of winter in 2012 (Günther et al., 2013). Sediment is thermo-abraded and deposited here in roughly equal measure. Differences in IBP depth along this profile are the result of differences in the duration and/or rate of IBP degradation. Differences between the western and eastern shores may be the result not only of differing IBP degradation rates and inundation periods but also of sediment budgets. Molochushkin (1978) attributes the thicker unfrozen sediment on the western side of Muostakh Island to the accumulation of marine sediment whereas erosion of sediment determines the depth to the IBP off the eastern shoreline. The similarity of the shoreface profiles suggests that this explanation is not sufficient to explain differences in IBP table inclination, however. Molochushkin and Gavrilov (1982) also present interstitial salinity profiles for two cores from positions northeast of Muostakh Island (mean TDS 6.4 g/100 g; $2.6\ \Omega\text{m}$) and west of Muostakh (mean TDS of 1.8 g per 100 g; $<0.1\ \Omega\text{m}$) suggesting diffusion of seawater into the sediment rather than deposition under marine conditions.

The shape of the IBP table along the drilling profile is more complicated and may have depended on the shape of the northern cape over time. A distance 2.5 km from the 1983 coastline (core 305, Fig. 3) has probably been submerged for at least 250 years based on the mean erosion rate of 10 m a^{-1} for the period of record. Along the drilling profile, 645 m of the geoelectric profile have been inundated since drilling took place in 1982 and 1983 (Fig. 3). In figure 3, the position of the IBP table is interpolated linearly between borehole sites. In the geoelectric profile (Fig. 3), its position relative to sea level is determined at soundings spaced between 2 and 5 m apart along the entire profile. The IBP table position based on geoelectric soundings therefore shows more detail

than the borehole profile. It shows a pronounced dip of over 7 m (from 8.5 to 15.6 m bsl) between the locations of boreholes 301 and 303, suggesting that the IBP there thawed more rapidly over the previous 28 years than locations closer to or further from shore. The slight rise in IBP beyond this dip corresponds to locally shallow parts of the 1983 bathymetry, where a sand bar resulted in water depth less than 1.5 m and where BFI probably formed each winter, allowing seasonal freezing of the sea floor (Kunitsky (1989), borehole 303; also shown for Muostakh Island in Are (2003)). Although bathymetry can vary throughout the season and between years, the presence of BFI at least at the time of drilling may have led to cooling of the sediment and relative slowing of degradation locally (Osterkamp et al., 1989; Sellmann et al., 1992).

BFI acts as a thermal couple between the seabed and the atmosphere in winter, due to the higher thermal conductivity of ice compared to seawater. This effect tends to delay permafrost degradation immediately after inundation, until bathymetry exceeds the maximum depth of winter ice thickness around 2 m, and the sea bed is covered by bottom water throughout the year (Osterkamp, 2001). Therefore, our observation of shallower IBP in places of former sand bars suggest that submarine permafrost preservation through thermal coupling of BFI outpaces the degradation effect associated with elevated brine concentration and injection under BFI. The duration of degradation on the abscissa in figure 7 includes any periods of BFI formation, and can therefore include a period of initial retardation of degradation. Molochushkin (1978) reports mean annual seawater temperatures at Muostakh of 0.2-0.3 °C and resistivities of 10 Ωm. Although the frequency and depth of measurements are not reported, these values are cooler than the 2.1 °C observed in this study but have the same mean salinity.

Differences in IBP depth between the eastern and western profiles may be the result of factors not observed in this study. For example, there may be systematic differences in benthic temperature and resistivity regimes on either side of Muostakh Island. We expect the sheltered western side to be less affected by the outflow of the Lena River on the eastern side, whereas we expect greater mixing and re-suspension due to wave action on the eastern side, especially when winds are from the N to NNE, and/or fetch exceeds 100 km. Such differences change boundary conditions for submarine permafrost and affect the degradation rate. Nonetheless, the differences in IBP depth and inclination observed on either side of the island are at least consistent with differences in relative erosion rates even if permafrost degradation rates are assumed to be similar.

5.3 Submarine permafrost degradation

Our results indicate that permafrost degradation rates at Muostakh Island are consistent with those inferred for near-shore sites elsewhere on the Siberian shelf (Overduin et al., 2007, 2015). Since we calculate a decrease in submarine permafrost degradation rate with increased duration of inundation, most of the Siberian shelf region, which has been inundated for longer periods, probably has lower rates than those observed here, near the coastline. The degradation rates that we infer for Muostakh

Island are probably typical for permafrost near the coast and the sea floor, where vertical thermal and solute concentration gradients within the sediment are steeper than for most of the shelf region. Following inundation, ice content decreases throughout submarine permafrost due to warming and the consequent thaw of pore ice. Nicolsky et al. (2012) shows this as an increase in water content
485 based on assumed freezing characteristic curves. In this model, the rate of ice thaw depends on a suite of conditions during and antecedent to inundation. However, at 74.5° N, 118° E, for example, the depth of permafrost saturated to at least 50 % by ice degrades from about 25 to 200 m bsf, a mean rate of just below 0.01 m a⁻¹ (Nicolsky et al., 2012). Romanovskii and Hubberten (2001) show even lower rates of degradation of ice-bonded permafrost (defined as liquid water contents of <5 % by
490 weight). Such slow rates of degradation make it difficult to detect changes in IBP depth. Further difficulties result from high uncertainties associated with geophysical techniques. As we observed, short-term changes in sea level and sediment dynamics can also create problems for comparing measurements made on multi-year time scales.

The rate of coastal retreat influences the inclination of the IBP within the sediment. The IBP table
495 inclinations along the three georesistivity profiles are consistent with a relationship between coastal retreat rate and the inclination of the IBP table. If erosion is rapid, the IBP table will tend to lie closer to the sediment surface (Fig 8a; eastern profile). In cases where the coastal retreat rate is slow and permafrost degradation occurs, the inclination of the ice-bearing permafrost table will tend to be steeper (Fig. 8b; western profile). Thus, the duration of inundation and distance from the coastline
500 are linked by the rate of coastline retreat, which is variable in time.

Observations of the inclination of the IBP table perpendicular to the coast in the Laptev and East Siberian seas show a high degree of spatial variability (Overduin et al., 2007), probably reflecting the temporally varying intensity of the processes described (Fig. 8c). Observing submarine permafrost depends on direct observation by drilling, sampling and temperature measurements (Fartyshev, 1993; Rachold et al., 2007) coupled with indirect observation using geophysical methods
505 sensitive to property changes between frozen and unfrozen sediment. Since the coastal zone is highly dynamic, especially during spring melt and fall freeze-up, the logistics of measurements and continuous monitoring are difficult, requiring innovative new instrumentation and platforms for use in shallow water.

510 6 Conclusions

Offshore Soviet borehole data from 1982-1983 near the coast of Muostakh Island shows warming, salinization and increasing depth to ice-bonded submarine permafrost (IBP) with increasing distance from shore. Geoelectric surveys along the borehole profile 28 years later show that land has been inundated as a result of coastal erosion and suggest that the submarine permafrost created has de-
515 graded at mean rates of between 0.6 and 0.1 m a⁻¹ over decades to centuries. Based on comparison

of two geoelectric profiles at an eroding and a stable stretch of coast we suggest that, other factors being equal, greater rates of coastal erosion generally lead to a shallower inclination of the IBP table close to shore. These results show that IBP degrades most rapidly immediately after it is inundated year-round and degradation rates slow over time. On this basis, it is likely that degradation rates for most of the Siberian shelf permafrost are less than 0.1 m a^{-1} . We have shown that the coastal zone can produce estimates of degradation rates and that coastal dynamics and submarine permafrost degradation rates interact to determine the shape of the IBP table. This study suggests that much can be learned about how small-scale processes accelerate or slow the degradation of submarine permafrost through detailed study of local controls on thawing. Shallow bathymetry, for example, such as sand bars shallower than the maximum annual sea ice thickness, may lead to temporary stabilization of permafrost following erosion. After characterizing shoreface bathymetry, geomorphology and sediment composition (particularly ice content), measurements of annual and seasonal variations in benthic and sediment temperature and salinity, and sediment flux on the shoreface are needed.

Acknowledgements. This work was funded by a Helmholtz Association of Research Centres (HGF) Joint Russian-German Research Group (HGF JRG 100). SPOT imagery were provided by SPOT Planet Action – an Astrium GEO initiative (project: Coastal erosion in East Siberia). Invaluable logistical support was provided by the Russian Hydrogeological Service in Tiksi, the Lena Delta Reserve and Waldemar Schneider.

References

- 535 Are, F. E.: Thermal abrasion of sea coasts, *Polar Geography and Geology*, 12, 1–86, doi:10.1080/10889378809377343, from: *Termoabraziya morskikh beregov*, Moscow: Nauka, 1980, 158 pp., 1988.
- Are, F. E.: Shoreface of the Arctic seas – a natural laboratory for subsea permafrost dynamics, in: *Proceedings of the Eighth International Conference on Permafrost*, Zürich, Switzerland, edited by Philips, M., Springman, S. M., and Arenson, L. U., pp. 27–32, Swets & Zeitlinger, Lisse, 2003.
- 540 Barnes, D. F.: Geophysical methods for delineating permafrost, in: *Proceedings of the International Conference on Permafrost*, Lafayette, Indiana, 11–15 November, edited by Woods, K. B. and Alter, A. J., pp. 349–355, National Academy of Sciences, Washington, D. C., 1963.
- Barnhart, K. R., Overeem, I., and Anderson, R. S.: The effect of changing sea ice on the physical vulnerability of Arctic coasts, *The Cryosphere*, 8, 1777–1799, doi:10.5194/tc-8-1777-2014, 2014.
- 545 Bauch, H. A., Mueller-Lupp, T., Taldenkova, E., Spielhagen, R. F., Kassens, H., Grootes, P. M., Thiede, J., Heinemeier, J., and Petryashov, V. V.: Chronology of the Holocene transgression at the North Siberian margin, *Global and Planetary Change*, 31, 125–139, doi:10.1016/S0921-8181(01)00116-3, 2001.
- Boike, J., Kattenstroth, B., Abramova, K., Bornemann, N., Chetverova, A., Fedorova, I., Fröb, K., Grigoriev, M., Grüber, M., Kutzbach, L., Langer, M., Minke, M., Muster, S., Piel, K., Pfeiffer, E.-M., Stoof, G., Westermann, S., Wischniewski, K., Wille, C., and Hubberten, H.-W.: Baseline characteristics of climate, permafrost and land cover from a new permafrost observatory in the Lena River Delta, Siberia (1998–2011), *Biogeosciences*, 10, 2105–2128, doi:10.5194/bg-10-2105-2013, 2013.
- 550 Brown, J., Ferrians, O. J. J., Heginbottom, J. A., and Melnikov, E. S., eds.: *Circum-Arctic map of permafrost and ground-ice conditions*, Circum-Pacific Map Series CP-45, U.S. Geological Survey in Cooperation with the Circum-Pacific Council for Energy and Mineral Resources, Washington, D. C., <http://nsidc.org/data/ggd318.html>, 2001.
- 555 Chuvilin, E. M., Bukhanov, B. A., Tumskoy, V. E., Shakhova, N. E., Dudarev, O. V., and Semiletov, I. P.: Thermal conductivity of bottom sediments in the region of Buor-Khaya Bay (Shelf of the Laptev Sea), *Earth Cryosphere*, 17, 32–40, 2013.
- 560 Constable, S.: Ten years of marine CSEM for hydrocarbon exploration, *Geophysics*, 75, 75A67–75A81, 2010.
- Corwin, R. F.: Marine permafrost detection using galvanic electrical resistivity methods, in: *Offshore Technology Conference*, 2–5 May, Houston, Texas, doi:10.4043/4480-MS, 1983.
- Dallimore, S. R. and Collett, T. S.: *Intrapermafrost gas hydrates from a deep core hole in the Mackenzie Delta*, Northwest Territories, Canada, *Geology*, 1995.
- 565 Dmitrenko, I. A., Kirillov, S. A., Tremblay, L. B., Kassens, H., Anisimov, O. A., Lavrov, S. A., Razumov, S. O., and Grigoriev, M. N.: Recent changes in shelf hydrography in the Siberian Arctic: Potential for subsea permafrost instability, *J. Geophys. Res.: Oceans*, 116, C10027, doi:10.1029/2011JC007218, 2011.
- Fartyshev, A. I.: *Osobennosti priberezhno-shelfovoi kriolitozony morya Laptevykh* (Characteristics of the near-shore Laptev Sea shelf), Russian Academy of Sciences, Siberian Branch, Nauka, Novosibirsk, in Russian, 1993.
- 570 Fedorova, I., Chetverova, A., Bolshiyarov, D., Makarov, A., Boike, J., Heim, B., Morgenstern, A., Overduin, P. P., Wegner, C., Kashina, V., Eulenburg, A., Dobrotina, E., and Sidorina, I.: Lena Delta hydrology

- and geochemistry: long-term hydrological data and recent field observations, *Biogeosciences*, 12, 345–363, doi:10.5194/bg-12-345-2015, 2015.
- 575 Frolov, A. D.: Electric and elastic properties of frozen earth materials, ONTI PNC Russian Academy of Science Press, Pushchino, 1998.
- Grigoriev, M. N.: Kriomorphogenez i litodinamika pribrezhno-shelfovoi zony morei Vostochnoi Sibiri (Cryomorphogenesis and lithodynamics of the East Siberian near-shore shelf zone), Habilitation thesis, Mel'nikov
- 580 Permafrost Institute, Russian Academy of Sciences, Siberian Branch, Yakutsk, 2008.
- Grigoriev, M. N., Kunitsky, V. V., Chzhan, R. V., and Shepelev, V. V.: On the variation in geocryological, landscape and hydrological conditions in the Arctic zone of East Siberia in connection with climate warming, *Geography and Natural Resources*, 30, 101–106, doi:10.1016/j.gnr.2009.06.002, 2009.
- Günther, F., Overduin, P. P., Makarov, A. S., and Grigoriev, M. N., eds.: Russian-German Cooperation SYSTEM LAPTEV SEA: The Expeditions Laptev Sea - Mamontov Klyk 2011 & Buor Khaya 2012, vol. 664 of *Berichte zur Polar- und Meeresforschung (Reports on Polar and Marine Research)*, Alfred Wegener Institute, Bremerhaven, <http://hdl.handle.net/10013/epic.41834>, 2013.
- 585 Günther, F., Overduin, P. P., Yakshina, I. A., Opel, T., Baranskaya, A. V., and Grigoriev, M. N.: Observing Muostakh disappear: permafrost thaw subsidence and erosion of a ground-ice-rich island in response to arctic summer warming and sea ice reduction, *The Cryosphere*, 9, 151–178, doi:10.5194/tc-9-151-2015, 2015.
- 590 Harrison, W. D.: Formulation of a model for pore water convection in thawing subsea permafrost, *Mitteilungen der Versuchsanstalt für Wasserbau, Hydrologie und Glaziologie*, 57, 3–24, 1982.
- Hutter, K. and Straughan, B.: Models for convection in thawing porous media in support for the subsea permafrost equations, *J. Geophys. Res.: Solid Earth*, 104, doi:10.1029/1999JB900288, 1999.
- 595 Kang, M. and Lee, J. S.: Evaluation of the freezing-thawing effect in sand-silt mixtures using elastic waves and electrical resistivity, *Cold Reg. Sci. Technol.*, 113, 1–11, doi:10.1016/j.coldregions.2015.02.004, 2015.
- King, M. S., Zimmerman, R. W., and Corwin, R. F.: Seismic and electrical properties of unconsolidated permafrost, *Geophysical Prospecting*, 36, 349–364, 1988.
- Kunitsky, V. V.: Kriolitologiya Nizovya Leny (Cryolithology of the Lower Lena), Melnikov Permafrost Institute, Russian Academy of Sciences, Siberian Branch, Yakutsk, in Russian, 1989.
- 600 Lachenbruch, A. H.: Thermal effects of the ocean on permafrost, *Bulletin of the Geological Society of America*, 68, 1957.
- Lantuit, H., Atkinson, D., Overduin, P. P., Grigoriev, M., Rachold, V., Grosse, G., and Hubberten, H.-W.: Coastal erosion dynamics on the permafrost-dominated Bykovsky Peninsula, north Siberia, 1951–2006, *Polar Research*, 30, 7341, doi:10.3402/polar.v30i0.7341, 2011.
- 605 McGuire, A. D., Anderson, L. G., Christensen, T. R., Dallimore, S., Guo, L., Hayes, D. J., Heimann, M., Lorenson, T. D., Macdonald, R. W., and Roulet, N.: Sensitivity of the carbon cycle in the Arctic to climate change, *Ecological Monographs*, 79, doi:10.1890/08-2025.1, 2009.
- Molochushkin, E. N.: The Effect of Thermal Abrasion on the Temperature of the Permafrost in the Coastal
- 610 Zone of the Laptev Sea, in: *Proceedings of the Second International Conference on Permafrost*, Yakutsk, U.S.S.R., 1973, July 13–28, edited by Sanger, F. J. and Hyde, P. J., vol. USSR Contributions, pp. 90–93, National Academy of Sciences, Washington D. C., 1978.

- Molochushkin, E. N. and Gavrilov, R. I.: Structure, Phase Composition and Heat Regime of the Bottom of the Coastal Laptev Sea, in: *The Arctic ocean and Its Coast in the Cenozoic Era (Severnyi Ledovityi Okean i Ego Poberezh'e v Kainozoe)*, edited by Tolmachev, A. I., p. 564, Amerind Publishing Co. Pvt. Ltd. New Delhi, 1982.
- Nicolsky, D. J., Romanovsky, V. E., Romanovskii, N. N., Kholodov, A. L., Shakhova, N. E., and Semiletov, I. P.: Modeling sub-sea permafrost in the East Siberian Arctic Shelf: The Laptev Sea region, *J. Geophys. Res.: Earth Surface*, 117, F03 028, doi:10.1029/2012JF002358, 2012.
- Nixon, J. F.: Thermal simulation of subsea saline permafrost, *Canadian Journal of Earth Sciences*, 23, doi:10.1139/e86-188, 1986.
- Osterkamp, T. E.: Sub-sea permafrost, in: *Encyclopedia of ocean sciences*, edited by Steele, J. H., Thorpe, S. A., and Turekian, K. K., vol. 5, pp. 2902–2912, Academic Press, New York, London, 2001.
- Osterkamp, T. E., Baker, G. C., Harrison, W. D., and Matava, T.: Characteristics of the Active Layer and Shallow Subsea Permafrost, *J. Geophys. Res. Oceans*, 94, doi:10.1029/JC094iC11p16227, 1989.
- Overduin, P. P., Hubberten, H.-W., Rachold, V., Romanovskii, N. N., Grigoriev, M. N., and Kasym'skaya, M.: The evolution and degradation of coastal and offshore permafrost in the Laptev and East Siberian Seas during the last climatic cycle, in: *Coastline Changes: Interrelation of Climate and geological Processes*, edited by Harff, J., Hay, W., and Tetzlaff, D., vol. 426, pp. 97–111, The Geological Society of America Special Paper, doi:10.1130/2007.2426(07), 2007.
- Overduin, P. P., Westermann, S., Yoshikawa, K., Haberlau, T., Romanovsky, V., and Wetterich, S.: Geoelectric observations of the degradation of nearshore submarine permafrost at Barrow (Alaskan Beaufort Sea), *J. Geophys. Res.: Earth Surface*, 117, F02 004, doi:10.1029/2011JF002088, 2012.
- Overduin, P. P., Liebner, S., Knoblauch, C., Günther, F., Wetterich, S., Schirrmeister, L., Hubberten, H.-W., and Grigoriev, M. N.: Methane Oxidation Following Submarine Permafrost Degradation: Measurements from a Central Laptev Sea Shelf Borehole, *J. Geophys. Res.: Biogeosciences*, doi:10.1002/2014JG002862, in press, 2015.
- Ping, C.-L., Michaelson, G. J., Guo, L., Jorgenson, M. T., Kanevskiy, M., Shur, Y., Dou, F., and Liang, J.: Soil carbon and material fluxes across the eroding Alaska Beaufort Sea coastline, *J. Geophys. Res.: Biogeosciences*, 116, G02 004, doi:10.1029/2010JG001588, 2011.
- Rachold, V., Bolshiyarov, D. Y., Grigoriev, M. N., Hubberten, H.-W., Junker, R., Kunitsky, V. V., Merker, F., Overduin, P., and Schneider, W.: Nearshore arctic subsea permafrost in transition, *Eos, Transactions American Geophysical Union*, 88, 149–150, doi:10.1029/2007EO130001, 2007.
- Romanovskii, N. N. and Hubberten, H.-W.: Results of Permafrost Modelling of the Lowlands and Shelf of the Laptev Sea Region, Russia, *Permafrost Periglac.*, 12, 191–202, doi:10.1002/ppp.387, 2001.
- Schirrmeister, L., Grosse, G., Wetterich, S., Overduin, P. P., Strauss, J., Schuur, E. A. G., and Hubberten, H.-W.: Fossil organic matter characteristics in permafrost deposits of the northeast Siberian Arctic, *J. Geophys. Res.: Biogeosciences*, 116, G00M02, doi:10.1029/2011JG001647, 2011a.
- Schirrmeister, L., Kunitsky, V., Grosse, G., Wetterich, S., Meyer, H., Schwamborn, G., Babi, O., Derevyagin, A., and Siegert, C.: Sedimentary characteristics and origin of the Late Pleistocene Ice Complex on north-east Siberian Arctic coastal lowlands and islands - A review, *Quatern. Int.*, 241, 3–25, doi:10.1016/j.quaint.2010.04.004, 2011b.

- Scott, W. J., Sellmann, P. V., and Hunter, J. A.: Geophysics in the Study of Permafrost, in: *Geotechnical and Environmental Geophysics*, edited by Ward, S., pp. 355–384, Soc. of Expl. Geoph., Tulsa, 1990.
- 655 Sellmann, P. V., Delaney, A. J., and Arcone, S. A.: Coastal submarine permafrost and bedrock observations using dc resistivity, vol. 89-13 of *U. S. Army Cold Regions Research and Engineering Laboratory (CRREL) Report*, National Technical Information Service, Hanover, New Hampshire, 1989.
- Sellmann, P. V., Delaney, A. J., Chamberlain, E. J., and Dunton, K. H.: Seafloor temperature and conductivity data from Stefansson Sound, Alaska, *Cold Reg. Sci. Technol.*, 20, 271–288, doi:10.1016/0165-
660 232X(92)90034-R, 1992.
- Shakhova, N. and Semiletov, I.: Methane release and coastal environment in the East Siberian Arctic shelf, *Journal of Marine Systems*, 66, 227–243, doi:10.1016/j.jmarsys.2006.06.006, 2007.
- Slagoda, E. A.: Genesis i mikrostroenie kriolitogennykh otlozhenii Bykovskogo polyostrova i ostrova Muostakh (Genesis and microstructure of cryolithogenic deposits at the Bykovsky Peninsula and the Muostakh Island), Ph.d. thesis, Mel'nikov Permafrost Institute, Russian Academy of Sciences, Siberian Branch, Yakutsk, in Russian, 1993.
- Slagoda, E. A.: Kriolitogennye otlozheniya primorskoi ravniny morya Laptevykh: litologiya i mikromorfologiya (poluostrov Bykovskiy i ostrov Muostakh) - Cryolithogenic sediments of the Laptev Sea coastal lowland: lithology and micromorphology (Bykovsky Peninsula and Muostakh Island), *Ekspress*, Tyumen, in
670 Russian, 2004.
- Solomon, S. M., Taylor, A. E., and Stevens, C. W.: Nearshore Ground Temperatures, Seasonal Ice Bonding, and Permafrost Formation Within the Bottom-Fast Ice Zone, Mackenzie Delta, NWT, in: *Proceedings of the Ninth International Conference on Permafrost*, Fairbanks, Alaska, June 29–July 3, edited by Kane, D. L. and Hinkel, K. M., vol. 2, pp. 1675–1680, 2008.

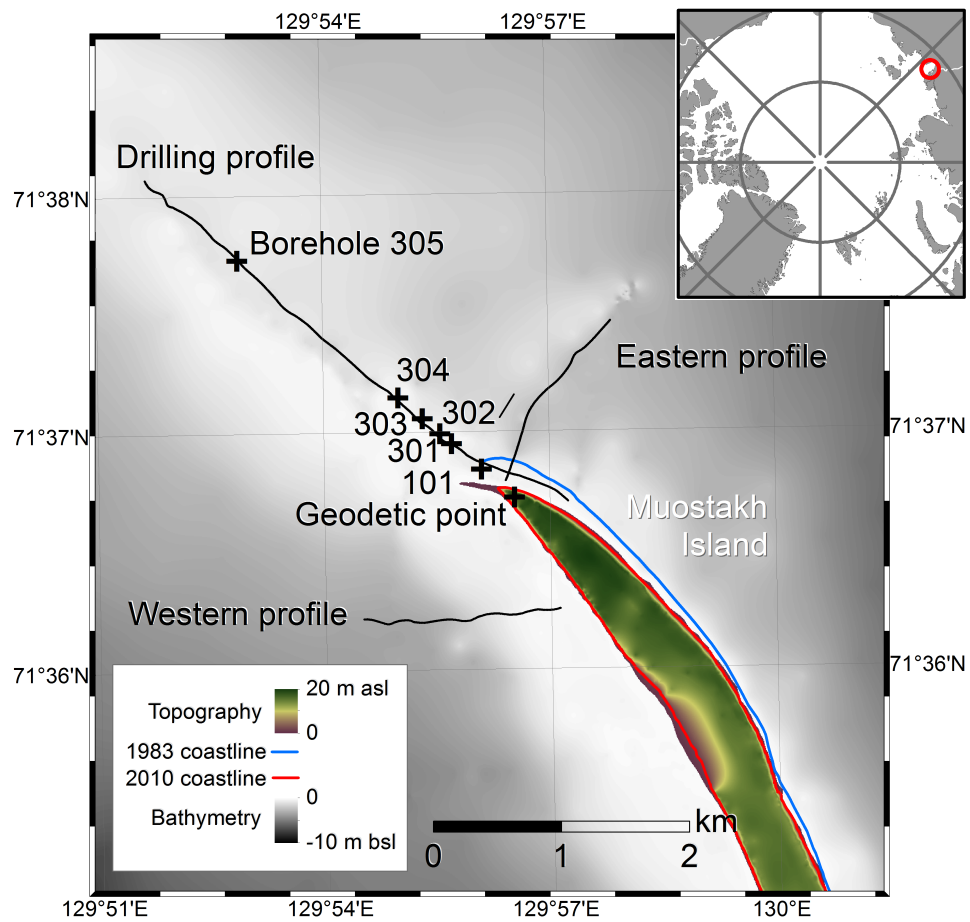


Figure 1. (a) The location of the study site in the Central Laptev Sea, eastern Siberia, Russia. (b) The topography of Muostakh Island and the surrounding bathymetry. The reference geodetic point and borehole locations are shown as diamonds and the three geoelectric profiles as black lines. The blue line surrounding the island indicates the position of the coastline in 1983, the red line the coastline in 2010.

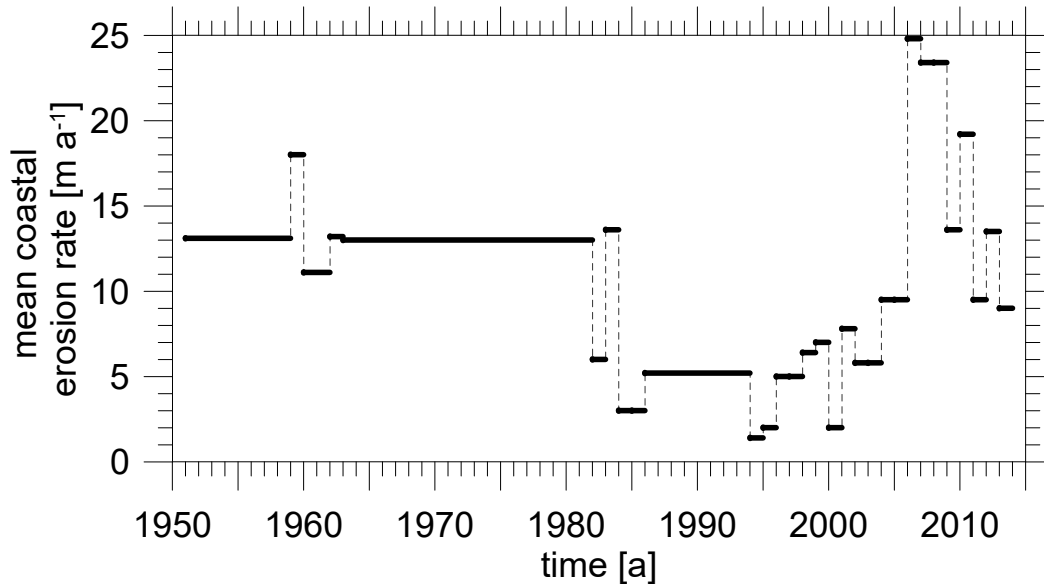


Figure 2. The mean annual erosion rate at the northern cape of Muostakh Island has been measured by determination of the position of the upper edge of the bluff relative to a geodetic point (measurements are indicated as mean values over a period) since 1951. The greater the absolute value, the higher the erosion rate (reproduced from Grigoriev et al. (2009) for data up to 2008).

Table 1. Borehole characteristics.

Borehole number ^a	Latitude, longitude	Water depth [m]	Borehole depth [m bsl]	IBP ^b table depth [m bsl]
101_82	71.6162 °N, 129.926 °E	0	52	0
301_83	71.6183 °N, 129.9208 °E	2.4	7.8	3.3
302_83	71.6188 °N, 129.9190 °E	3	10	4
303_83	71.6199 °N, 129.9156 °E	2	12	7
304_83	71.6217 °N, 129.9083 °E	3.4	50.7	8.3
305_83	71.6254 °N, 129.8958 °E	3	54	16

^a data from Kunitsky (1989); Slagoda (1993, 2004); ^b IBP: ice-bonded permafrost

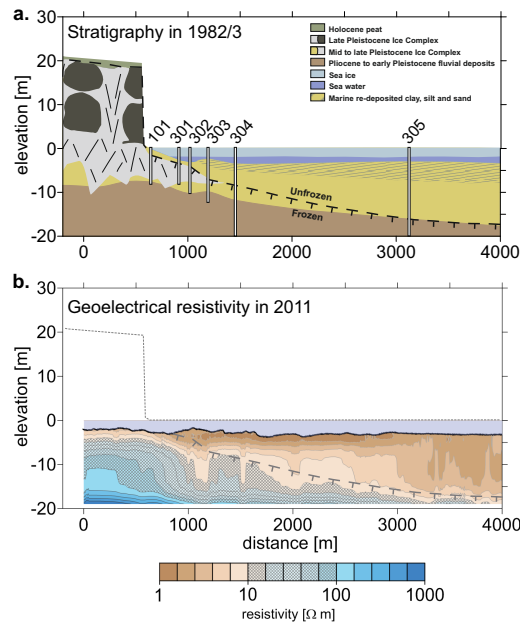
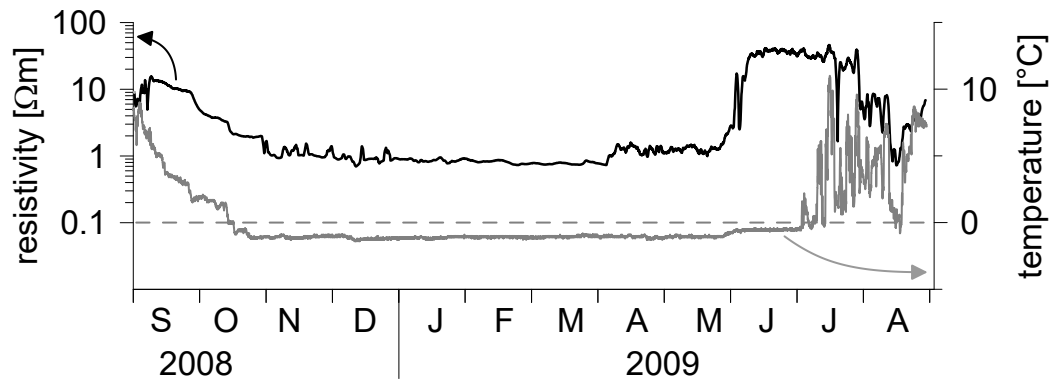


Figure 3. A comparison of the results of the drilling expedition in 1982 and 1983 with the inverted resistivity in 2011. The stratigraphy in the upper figure is based on the coastal exposures and the interpolation of borehole sediment stratigraphy, redrawn from Slagoda (2004). A range of resistivities (from 10 to 100 Ωm), inverted from measured apparent resistivities, is indicated with cross hatching on the resistivity cross-section in the lower figure. The position of the IBP interpolated from the boreholes is repeated on the lower figure (dashed gray line) for reference. The vertical exaggeration is 37 times.

a. bottom water



b. sediment pore water

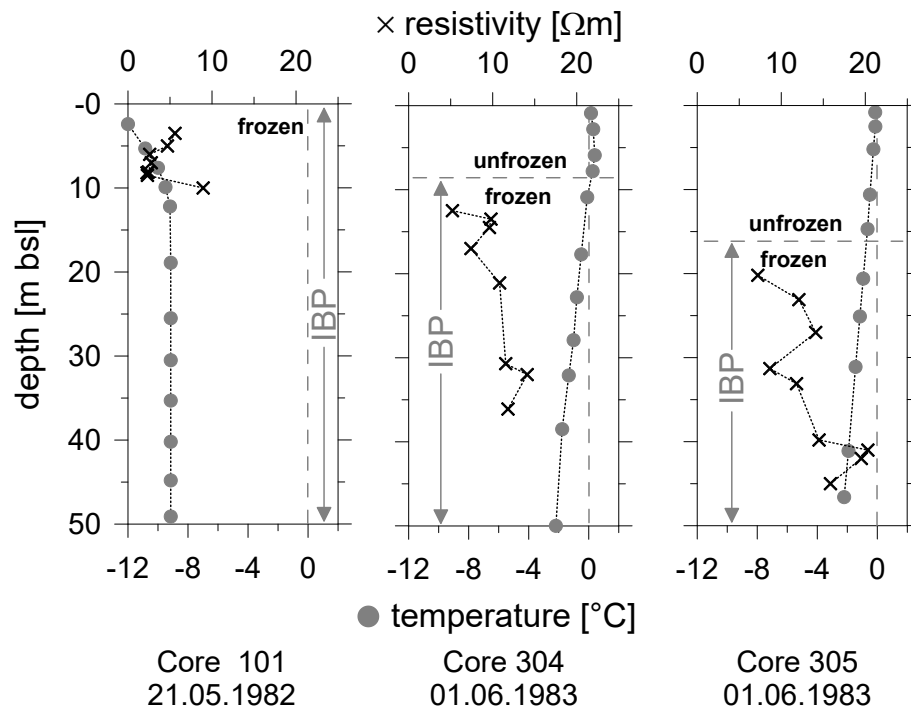


Figure 4. Water electrical resistivity and temperature are shown for: (a) bottom water measured for the period September 1, 2008 – August 31, 2009 in 7.2 m water depth and (b) for sediment pore water (based on eq. 1) from cores recovered from boreholes 101, 304 and 305 on the dates indicated (Figs. 1 & 3; Tab. 1); temperature data given in grey lines and circles and electrical resistivity data is given in black lines and crosses.



Figure 5. Photographs of the western (top) and eastern (bottom) coastal bluffs show similarities in the height (ca. 22 m) and morphology. The presence of thermokarst mounds (baidzherakhs) characterizes both coasts, but the comparatively stable western baidzherakhs are completely vegetated, whereas pioneer species are sparsely established on the eastern baidzherakhs. The top of the eastern coastal bluff has over-hanging vegetative mats, below which melting polygon ice wedges are exposed. On the western coast, ice wedges have already to at least the depth of annual ground thaw.

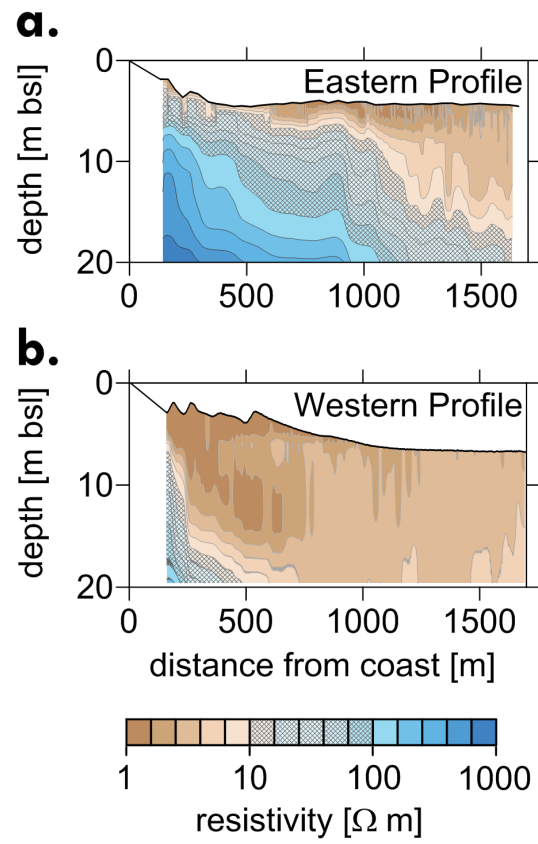


Figure 6. Inversions of the georesistivity of the eastern and western geoelectric profiles (positions shown in Fig. 1).

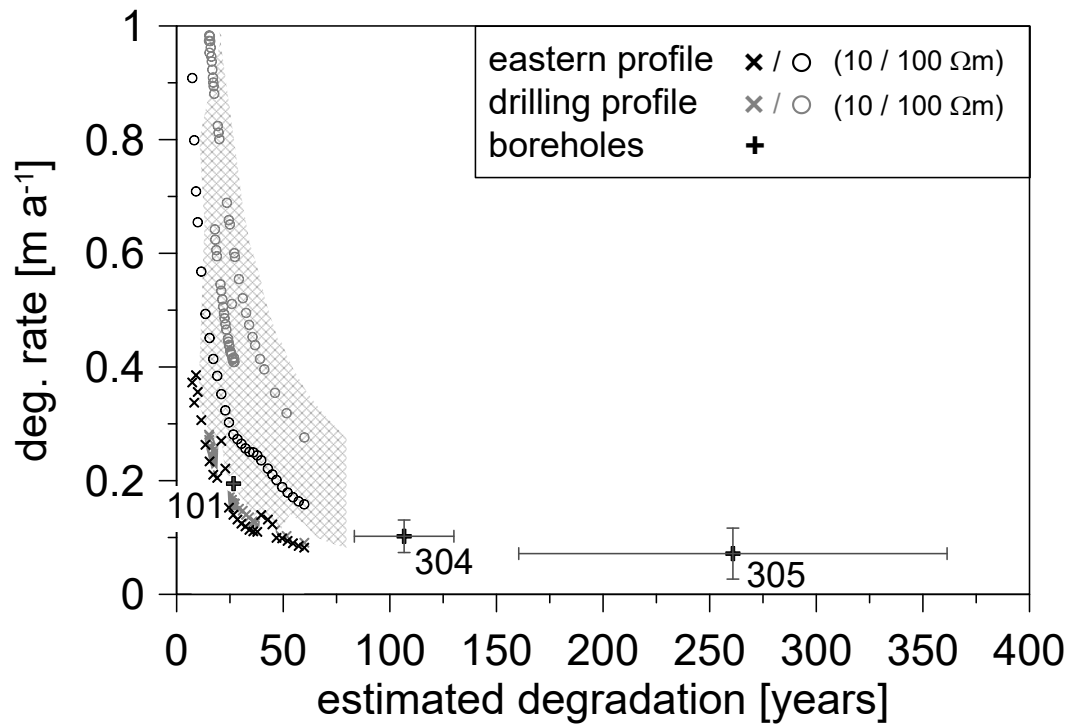


Figure 7. Permafrost degradation rate inferred from geoelectric soundings and their positions, for the eastern and borehole geoelectric profiles and for three boreholes indicated by number (diamonds). Only soundings/boreholes located within the region eroded since 1951 are used. Degradation rates are shown for 10 and 100 Ωm are indicated with crosses and circles, respectively. The hatched area corresponds to the union of the hatched areas in Fig. 3b and Fig. 6.

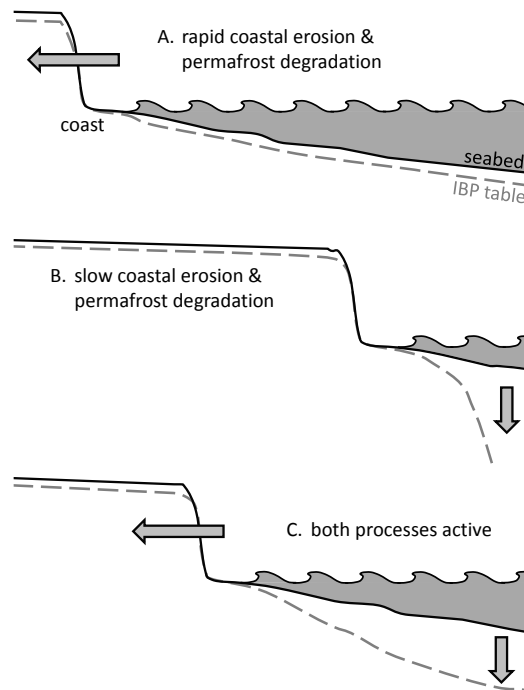


Figure 8. The relative rates of coastline retreat and permafrost degradation affect the shape of the ice-bonded permafrost (IBP) table beneath the shoreface profile sediment. In A., rapid coastline retreat lead to an IBP table close to the sediment surface; in B., a stable coastline leads to an IBP table that is more steeply inclined; in C., most IBP table inclinations can be expected to reflect a complicated suite of factors, including temporally variable coastline retreat, permafrost degradation rates, and near-shore sediment dynamics.