

Dear Dr. Klein,

Please find in the following our comments to your requested minor revisions (here reported in italic). Note that, in addition, we have added another paragraph (page 4, line 1) containing the proper definitions for the total and polarized reflectance, since we realized we hadn't given them (and it helps the reader understanding why these quantities are dimensionless). All changes are highlighted in red in the marked-up document.

Sincerely,

M. Ottaviani, B. vanDiedenhoven, B. Cairns

Comments to the Author:

I appreciate your efforts to address the concerns raised by primarily by the 2nd reviewer. There are two minor questions/issues that will need to be fixed prior to publication. First, it appears that the 2nd reviewer would like to see some references to Baum and colleagues. It appears that you have added appropriate references. I am just curious as whether Baum has any first authored publications in the area?

We were happy to rearrange a paragraph in Sec. 3 (page 7, line 21) to include the following relevant references:

Baum, B. A., P. Yang, A. J. Heymsfield, A. Bansemer, A. Merrelli, C. Schmitt, and C. Wang, 2014: Ice cloud bulk single-scattering property models with the full phase matrix at wavelengths from 0.2 to 100 μm . *J. Quant. Spectrosc. Radiat. Transfer*, 146, 123-139, doi:10.1016/j.jqsrt.2014.02.029

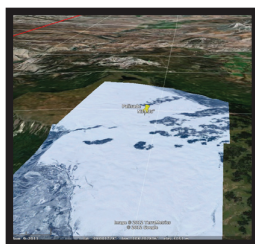
Baum, B. A., P. Yang, A. J. Heymsfield, C. G. Schmitt, Y. Xie, A. Bansemer, Y.-X. Hu, and Z. Zhang (2011), Improvements in short- wave bulk scattering and absorption models for the remote sensing of ice clouds, *J. Appl. Meteorol. Clim.*, 50(5), 1037–1056, doi:10.1175/2010JAMC2608.1.

The 2nd issue that must be addressed is Figure 1 which as you noted needs to be enlarged. I would like to see a revised figure before approving for submission. Would it be possible to enlarge the small graphs - in part perhaps by removing redundant information between the graphs?

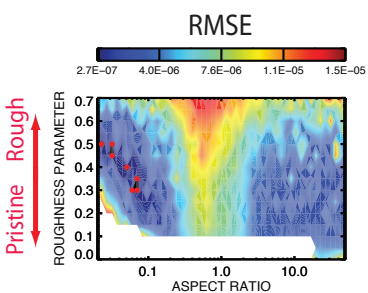
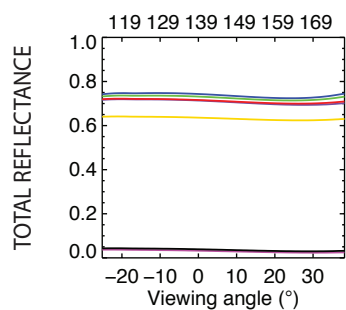
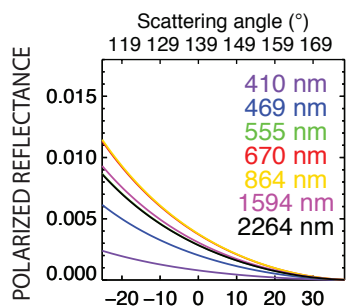
I am happy to be of assistance with this.

We are sure that you will appreciate the new version of Figure 1, which has been considerably cleaned up and improved in the color scheme. As you can see in the next page, please remember that for ideal rendering a full page should be reserved for the aforementioned figure and the relative caption, which has also been updated to include the explanation for the information reported immediately below the imagery.

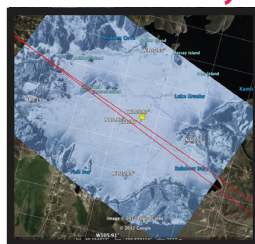
Grand Mesa



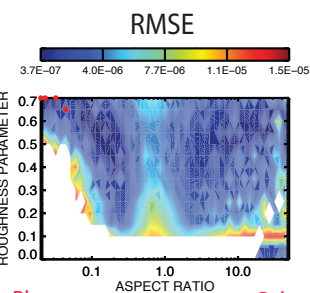
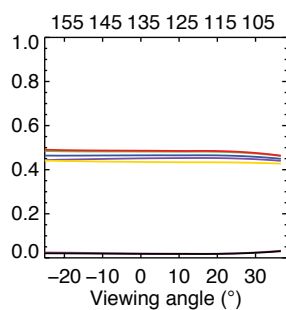
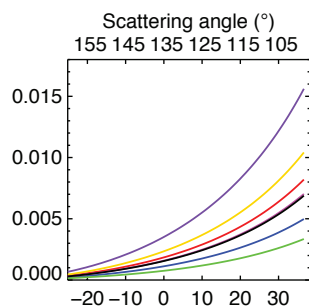
3006m, SZA=40.9°, RA=178°



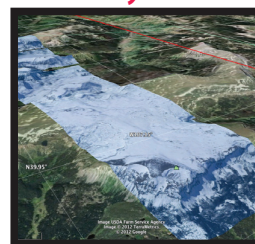
Lake Granby



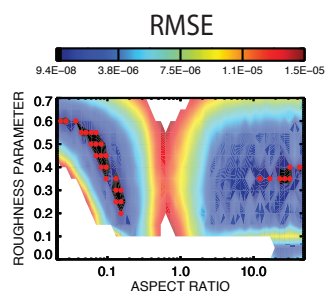
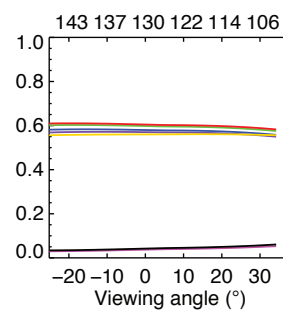
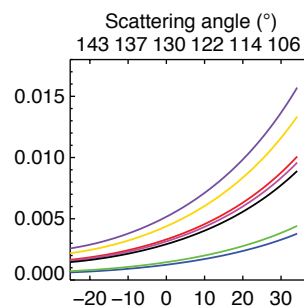
2523m, SZA=44.6°, RA=1°



Derby Peak



3462m, SZA=50.0°, RA=316°



Plates ← Aspect Ratio → Columns

Photopolarimetric retrievals of snow properties

M. Ottaviani¹, B. van Diedenhoven^{1,2}, and B. Cairns¹

¹NASA Goddard Institute for Space Studies, 2880 Broadway, New York, NY, USA

²Center for Climate System Research, Columbia University, New York, NY, USA

Correspondence to: M. Ottaviani (matteo.ottaviani@nasa.gov)

Abstract

Polarimetric observations of snow surfaces, obtained in the 410–2264 nm range with the Research Scanning Polarimeter onboard the NASA ER-2 high-altitude aircraft, are analyzed and presented. These novel measurements are of interest to the remote sensing community because the overwhelming brightness of snow plagues aerosol and cloud retrievals based on air- and space-borne total reflection measurements. The spectral signatures of the polarized reflectance of snow are therefore worthwhile investigating in order to provide guidance for the adaptation of algorithms currently employed for the retrieval of aerosol properties over soil and vegetated surfaces. At the same time, the increased information content of polarimetric measurements allows for a meaningful characterization of the snow medium. In our case, the grains are modeled as hexagonal prisms of variable aspect ratios and microscale roughness, yielding retrievals of the grains' scattering asymmetry parameter, shape and size. The results agree with our previous findings based on a more limited dataset, with the majority of retrievals leading to moderately rough crystals of extreme aspect ratios, for each scene corresponding to a single value of the asymmetry parameter.

1 Introduction

The development of accurate techniques for the retrieval of climatologically relevant parameters in snow-covered regions is of obvious importance for the success of climate models predictions (Comiso, 2006; Zwally and Giovinetto, 2011; Zatko et al., 2013). For instance, the retrieval of grain size and surface temperature leads to information that can be used to map the snow melting state, valuable to understand the mass balance of the ice sheets (Stamnes et al., 2007; Lyapustin et al., 2009). Passive optical sensors are employed in this regard to evince the optical and microphysical properties of snow grains from measurements of snow reflectance, and advanced algorithms have been applied to data collected by the MODerate resolution Imaging Spectroradiometer (MODIS) and sensors with

similar capabilities (Hori et al., 2007; Aoki et al., 2007; Jin et al., 2008; Stamnes et al., 2011). However, the limited information content of such measurements translates into uniqueness problems during the retrieval process, with the result that operational snow products are still limited to snow covered area and albedo (with the exception of the recent addition to MODIS of the dust radiative forcing product as described in Painter et al., 2012). Polarimetric remote sensing (Diner et al., 2007; Cairns et al., 2009; Dubovik et al., 2011; Hasekamp et al., 2011; Chowdhary et al., 2012; Ottaviani et al., 2012a; Knobelspiesse et al., 2012) adds to the information contained in MODIS-type observations because it can provide information on the ice grain shape (van Diedenhoven et al., 2012; Ottaviani et al., 2012b) and an accurate characterization of the optical and microphysical properties of aerosols present in the scene including possible impurities embedded in the snowpack. The benefits of passive polarimetric observations originate from both their extreme sensitivity to particle microphysics and the specifics of surface polarized reflectance. For conventional land types (soil, vegetation), the latter can be effectively parameterized as a scaled Fresnel reflection function with negligible spectral dependence. As a consequence, the separation of the signal into its surface and atmospheric contributions (i.e., the atmospheric correction procedure) is achieved with improved accuracy.

There certainly is debate on the applicability of the radiative transfer theory to a densely packed medium as snow. In any case, the formalism is recognized to model the total reflectance with sufficient accuracy for reasons likely associated with the large number of scattering events taking place within the snowpack. Based on this assumption, the method is expected to perform even better for the polarization component because the polarimetric signatures of a medium are known to originate from its top layer (van Diedenhoven et al., 2013): deeper into the medium (i.e., past the first units of optical depth) multiple scattering randomizes polarization.

The NASA GISS Research Scanning Polarimeter (RSP, Cairns et al., 1999), born as an aerosol research instrument, provides a target's total and polarized reflectance with high accuracy in 9 bands between 410 and 2264 nm and at 152 viewing angles per scene.

Specifically, the dimensionless reflectances are obtained from the measurements of the first three components of the Stokes vector (I, Q and U) as follows:

$$R_I = \frac{\pi r_0^2}{F_0 \cos \theta_s} I \quad (\text{Total Reflectance}) \quad (1)$$

$$R_Q = \frac{\pi r_0^2}{F_0 \cos \theta_s} Q \quad (2)$$

$$5 \quad R_U = \frac{\pi r_0^2}{F_0 \cos \theta_s} U \quad (3)$$

$$R_p = \sqrt{R_Q^2 + R_U^2} \quad (\text{Polarized Reflectance}) \quad (4)$$

where the (annual average) extraterrestrial solar irradiance F_0 is corrected for the Sun-Earth distance r_0 and the solar zenith angle θ_s .

A recent deployment led to the first published study of the polarimetric signatures of snow reflectance from airborne observations (Ottaviani et al. (2012b), hereafter referred to as O12). In that case, the measurements were acquired over a topologically complex terrain in the Yosemite National Park region and processed with an automated, iterative atmospheric correction scheme purposely created to analyze the spectral dependence of the polarized reflectance. A preliminary retrieval of crystal microphysical and optical properties was also
10 tested. The purpose of this new work is to apply the same atmospheric correction procedure and to extend the surface properties retrieval scheme to a more recent dataset of improved quality, in terms of the flatness of the surveyed terrain.

In the next section we describe the data collection, and in Sect. 3 the processing scheme. In Sect. 4 we discuss the results obtained from the analysis. The conclusions are found in
20 Sect. 5.

2 Data collection

The data analyzed here were collected onboard the high-altitude ER-2 aircraft during the Polarimeter Definition EXperiment (PODEX) mission, a NASA effort to ultimately test and compare the performance of different polarimeters, as part of the Decadal Survey activities and in preparation of the Studies of Emissions and Atmospheric Composition, Clouds and Climate Coupling by Regional Surveys (SEAC4RS) campaign. Compared to more traditional aircraft such as the King Air B200 used in O12, the ER-2 offers the advantages of a perspective more similar to that of a satellite. For example, interference caused by cirrus clouds is readily assessed using the RSP 1880 nm channel, which is usually very dark because of the strong absorption by tropospheric water vapor that masks the surface, and is therefore very sensitive to high-altitude clouds. There is in fact interest in exploiting this wavelength as a cirrus screener in a broader context, since cold places tend to have dry atmospheres and the reflectance of snow at 1880 nm is much less than at, say, 1380 nm (the effective strength of absorption by ice at 1880 nm is twice that exhibited at 1380 nm). Also, RSP operations on the ER-2 benefit from the stable attitude intrinsic to stratospheric flights, which enhances data quality since the RSP scans along the flight track (approximately 50° on either side of nadir) to assemble the multiangle view of a target's reflectance from subsequent scans.

About a dozen snow-covered targets were selected for the 6.8 h flight over Colorado and the Sierra Nevada range in California on 15 March 2012. Well-formed snowpacks with little to no interference from vegetation and flatness of terrain were the main priorities. Three scenes were chosen for this analysis. The Grand Mesa plateau ($39^\circ 08' \text{ N}$, $108^\circ 12' \text{ W}$, $\sim 3000 \text{ m a.s.l.}$) in Western Colorado exhibits remarkable flatness and a consistent snowpack with a depth of greater than one meter as reported by nearly simultaneous in-situ surveys (Mesa Lakes SNOTEL site managed by the Natural Resources and Conservation Service of the US Department of Agriculture, and M. Skiles, personal communication, 2013). Lake Granby ($40^\circ 10' \text{ N}$, $105^\circ 53' \text{ W}$, $\sim 2500 \text{ m a.s.l.}$), the third largest body of water in Colorado and second largest reservoir, was frozen at the time of the overpass and cov-

ered with a thin layer of aged, likely metamorphosed snow (the SNOTEL site at Stillwater Creek recorded a snow depth of ~ 0.5 m). The scene denoted by Derby Peak ($39^{\circ}59' \text{ N}$, $107^{\circ}10' \text{ W}$, ~ 3500 m a.s.l.) is another high-altitude rather flat region (in fact belonging to the Flat Tops Wilderness Area). The closest SNOTEL site at Trapper Lake, 2950 m a.s.l., reports a snow depth of 0.7 m.

3 Methodology

The method employed for the atmospheric correction procedure is explained in detail in O12, to which the reader can refer if interested in the rigorous mathematical formalism. To provide a brief summary, the signal measured by the instrument is a non-linear function of the surface reflectance due to the interaction of the radiation reflected by the surface with the atmosphere above. For this reason, a linear regression cannot be applied to infer the model parameters. Nevertheless, a cost function with the departure of the model from the measurements can still be computed and minimized, provided the availability of the derivatives (Jacobians) of the radiative transfer model with respect to the descriptive parameters. The Jacobians, generated without extra-computational cost from the linearization of the Doubling-Adding radiative transfer code in use at GISS (De Haan et al., 1987), are used in an iterative scheme based on an inversion and optimization procedure of the Gaussian-Newton kind (Rodgers, 2000) to search for a minimum of the cost function. The result is the decoupling of the surface and the atmospheric contributions of the total signal measured at instrument altitude, i.e., an automated atmospheric correction. Within this scheme, the surface total reflectance is expressed as the weighted sum of three kernels as in the RossThick – LiSparse form (Wanner et al., 1995; Lucht et al., 2000):

$$R(\Theta) = f_{\text{iso}} + f_{\text{vol}}K_{\text{vol}}(\Theta) + f_{\text{geo}}K_{\text{geo}}(\Theta) \quad (5)$$

where Θ is the scattering angle. The three terms on the right-hand side describe different scattering mechanisms: a Lambertian component for isotropic reflection, a volumetric term K_{vol} for scattering from small structures and a geometric term K_{geo} for a macroscopic

shadowing from large objects. Although this model was created for reflection from surfaces other than snow, its mathematical form adapts without problems to snowpacks, with the isotropic kernel systematically assuming the largest weight because of the dominance of multiple scattering in the reflection of light from snow.

As far as the polarized reflectance is concerned, we instead employ a scaled Fresnel kernel elsewhere used for vegetated surfaces (Nadal and Bréon, 1999; Waquet et al., 2009):

$$R_p = \frac{F_p(\theta_i)}{4[\cos(\theta_s) + \cos(\theta_v)]} \quad (6)$$

with the fractional polarized reflectance $F_p(\theta_i)$ given by (Born and Wolf, 1999):

$$F_p(\theta_i) = \frac{1}{2} \left[\left(\frac{n_1 \cos \theta_i - n_2 \cos \theta_t}{n_1 \cos \theta_i + n_2 \cos \theta_t} \right)^2 - \left(\frac{n_2 \cos \theta_i - n_1 \cos \theta_t}{n_2 \cos \theta_i + n_1 \cos \theta_t} \right)^2 \right] \quad (7)$$

where in our case n_1 and n_2 are the indices of refraction of pure air and ice, and the angle of refraction θ_t is connected to the angle of incidence θ_i by Snell's law.

For the retrieval of crystal habit, the polarized reflectance at 864 nm is used because of the very weak ice absorption at this wavelength and the relatively weak Rayleigh scattering contribution. Limited by the lack of constraints on the correct optical properties, very few studies have departed from the common practice of assuming spherical shapes for the snow grains, an approximation which can negatively impact the quality of the albedo products (Tedesco and Kokhanovsky, 2007; Aoki et al., 2000). In our case, the description of the snowpack is refined by treating it as a compact, optically semi-infinite medium composed of ice crystals modeled as hexagonal prisms with variable aspect ratios and microscale facet roughness.

Ice crystals are found to vary within a virtually countless set of shapes. To model their scattering properties, quite a few optical models are available, like for example those of Baum et al. (2014, 2011) and Yang et al. (2013). Incidentally, Räisänen et al. (2015) recently attempted to fit measured phase functions of blowing snow by using phase functions of several complex habits provided by Yang et al. (2013) in addition to phase functions

of other habits. However, the selection of habits in their study remained limited and to fit the data a rather arbitrary mixture of droxtals, aggregates of plates and Koch fractals was needed, leading them to conclude that this mixture “most probably does not represent properly the actual distribution of snow grain shapes in blowing snow (or snow on ground)”.

5 It should be noted that for the specific task of remote sensing of aerosols over snow, a model capable of accurately reproducing the contribution of the surface to the total signal should be considered successful regardless of its capability to mimic the true shape of the crystals. Our approach is based on the recognition that hexagonal plates and columns can be effectively used as radiative proxies for more complex crystal habits (Fu, 2007; Um
10 and McFarquhar, 2007, 2009; Baran, 2009; van Diedenhoven et al., 2012; Ottaviani et al., 2012a). As demonstrated by van Diedenhoven et al. (2012), matching measured polarized reflectances with a look-up table of values simulated by adjusting the aspect ratios and roughness parameters of simple hexagonal particles yields an estimate of the asymmetry parameter of more complex ice crystals. Our database, initially created to be of use for
15 the retrieval of ice clouds properties, contains 765 different combinations of aspect ratios and roughness parameters and was computationally assembled by running Monte Carlo simulations based on geometric optics (Macke et al., 1996), the performance of which was evaluated by van Diedenhoven et al. (2012). The retrieved aspect ratios are interpreted as the mean of the aspect ratios of the components of the complex crystals.

20 The microscale surface roughness is statistically accounted for by tilting, for each interaction with a ray, the normal to the crystal surface by an angle randomly selected in the $\delta \cdot [0^\circ, 90^\circ]$ interval, where δ is referred to as the roughness parameter. In our case, δ is limited to 0.7 (i.e., a maximum tilt angle for the facet of 63°) because for higher values the probability of unphysical scattering events strongly increases, resulting in progressively larger
25 loss of accuracy of the GO calculations of a given number of rays. Neshyba et al. (2013) have shown that various other definitions and parameterizations of crystal surface roughness lead to similar results. Yang et al. (2008) found that such approaches are efficient, yet accurate treatments of microscale roughness. Furthermore, the effects of microscale

surface roughness and macroscale crystal distortion were shown to be largely equivalent by Liu et al. (2014).

The retrieval of grain size is instead based on the total reflectance at selected ShortWave InfraRed (SWIR) bands where ice absorption is high. The total reflectance of an optically semi-infinite snow layer at 2264 and 1594 nm is effectively determined by the asymmetry parameter and the single scattering albedo at the respective wavelength, which in turn is mainly determined by the effective diameter of the ice crystals. The grain diameter is not unequivocally defined in the literature, which is understandable since the definition of snow grain itself is often ambiguous. There is a consensus for expressing grain effective diameter as proportional to the ratio of crystal volume to projected area, but the value of the multiplier can vary according to the specific choice of the author (Kokhanovsky et al., 2011; Kokhanovsky and Zege, 2004; Aoki et al., 2000). In line with several recent publications (see for example Zege et al., 2011; Jin et al., 2008), we define it as $3/2$ times the ratio of the crystal volume over its surface area, as outlined in the Appendix, which includes the details of the relationship to geometric size. The effective diameter of snow for a given scene is estimated by matching the measured reflectance with an ice crystal model whose asymmetry parameter is consistent with that retrieved for that scene using the method described above. To this end, various modified gamma size distributions were applied to yield varying effective diameters and the radiative transfer code was used to simulate the corresponding 1594 and 2264 nm reflectances (van Diedenhoven et al., 2014). For conditions equivalent to those found in snowpacks, Bi et al. (2014) showed that the errors in retrieved effective radius attributable to the use of the conventional geometric optics approach are below 5 %. Another important aspect to consider is that the 1594 and 2264 nm channels experience different penetration depths, with the former weighted more towards the top layer while the latter probes deeper into the medium: as a consequence, the retrieved sizes contain information on the vertical structure of the snowpack (Wang et al., 2009; Li et al., 2001; Warren, 1982).

As far as the atmospheric component is concerned, the high elevation of these alpine regions allowed us to assume negligible contributions from aerosols, so that in the radiative

transfer code a standard Rayleigh atmosphere was used with a surface pressure extrapolated at the indicated altitude. Cirrus-free conditions were guaranteed from the screening procedure described earlier. The SWIR channels were corrected for the minimal interference caused by absorption from a standard amount of trace gases.

4 Results and discussion

The core of our findings is condensed in Fig. 1. For each of the three scenes (different columns in the figure) the analysis was performed over a single RSP pixel, corresponding to a spatial resolution of about 225 m. Indeed, averaging over a few adjacent aggregated scans did not show appreciable scan-to-scan variability, revealing more or less uniform snow conditions on a scale larger than the instrument instantaneous field of view. Real-time imagery from the high-resolution camera onboard the ER-2, overlaid to Google Earth, is included for context. The second and third rows of panels show the results of the iterative correction scheme applied to the relevant RSP channels. With the exception of O12, the visible and SWIR behavior of the polarized reflectance of snow has not been previously published.

The total reflectance exhibits the familiar high spectral albedo in the visible, although with some expected scene-to-scene variability. Lake Granby in particular shows lower total reflectance than the other two scenes; in situ simultaneous surveys from the personnel at the US Forest Service in Arapaho National Forest reported a snow depth on the order of 5–8 cm. These values are close to the limit of thickness required to visually mask the underlying surface, leaving the possibility that the lake ice underneath the snow cover is darkening the reflectance. Nevertheless, a layer of a few millimeters is sufficient to fulfill the semi-infinite approximation at the longer wavelengths used for the retrieval of grain size: the RSP SWIR channels at 1594 and 2264 nm are very dark because of the strong absorption of ice at these wavelengths.

The polarized reflectance as a function of the scattering angle is very similar among the three scenes. Note that in the case of Derby Peak the flight track was oriented at about

45° with respect to the principal plane (i.e. the plane defined by the solar azimuth and the normal to the surface), leading to a smaller range of scattering angles collected by the RSP. It has already been observed in O12 as the land model used for the polarized reflectance converges to zero toward backscatter (scattering angle $> 160^\circ$), and in this region agreement with the data is not to be expected. It is useful to quantify the spectral spread of the channels by examining the differences from the reference 2264 nm channel. The signal in this band is in fact a proxy for the surface contribution, since the Rayleigh (and fine-mode aerosol) contribution becomes more and more negligible as the observation windows shifts to the SWIR. If the spectral differences are small, that same signal can then be subtracted from the shorter RSP wavelengths when aerosols retrievals are attempted. The residuals with respect to the 2264 nm polarized reflectance are found to be within 0.005, which as in O12 is larger than conventional land surfaces but still very small. The polarized reflectance is small too in absolute value.

Shifting the attention to the search of a snow model, the plots at the bottom contour the Root Mean Square Error (RMSE) of the data fit to each combination of aspect ratio and roughness parameter in the database. Multiple combinations led to a satisfactory fit to each of the three polarized reflectance observations, so we considered as optimal all habits with an RMSE falling below a small threshold value (4.5×10^{-7}). These minima, marked with red circles, therefore correspond to those crystal habits that when used to model the snowpack at the bottom of the simulated atmosphere yield the best fits to the data. The analysis shows that the polarized reflectances are consistent with particles that have components that are like thin plates or like thin columns, a fact already observed in O12. Interestingly, the butterfly-like topology of the RMSE was recognized to closely resemble that obtained for the asymmetry parameter g plotted vs. the same coordinates (Fig. 2). In each scene, the optimal crystal habits are associated with very similar values of the asymmetry parameter (0.84 for Lake Granby, 0.876 for Derby Peak and 0.90 for Grand Mesa). This result is understood by considering that the asymmetry parameter is the main descriptor for the scattering properties. As demonstrated by van Diedenhoven et al. (2012) using a large variety of complex ice crystal shapes, all the combinations of aspect

ratio and roughness parameter fitting a polarized reflectance measurement are ultimately characterized by similar values of g . Consequently, they will also yield similar particles size retrievals.

Figure 3 shows the phase function and the degree of linear polarization for each scene, obtained by averaging over all the phase matrices associated with the retrieved minima. The lack of halo peaks in the $20^\circ - 40^\circ$ range of the phase function characteristic of pristine crystals, and the general smooth behavior (except from the strong forward peak) is consistent with the moderate-to-high roughness parameters determined in the analysis.

All retrieved parameters are reported for comparison in Table 1, together with the results of the size retrievals. Using the simple approach outlined in the previous section, we obtained effective diameters equal to 152, 182 and 144 μm for the Grand Mesa, Lake Granby and Derby Peak scene, respectively, when using the RSP band at 2264 nm. Using instead the 1594 nm channel, diameters typically 30 μm smaller are obtained for each scene, which can be explained by the different penetration depths of the two channels, indicating crystal size increasing with depth as expected (Hori et al., 2007; Li et al., 2001; Aoki et al., 2000; Warren, 1982). These values, at the lower end of common retrieval ranges, are normally associated with fresh snow conditions as found in studies based on other remote sensors in alpine regions (Negi and Kokhanovsky, 2011; Painter et al., 2009; Dozier and Painter, 2004; Nolin and Dozier, 2000) and polar plateaus (Lyapustin et al., 2009; Hori et al., 2007). However, a direct comparison is challenged by differences in the definition of grain size, assumptions on grain sphericity and different penetration depths achieved by the use of different instrument channels. The larger grain sizes obtained for the Lake Granby scene were attributed to the shallow aged snow over the lake, since metamorphized snow is recognized to be composed of larger grains (Aoki et al., 2000; Warren, 1982).

5 Conclusions

We have presented the extension of a novel analysis described by Ottaviani et al. (2012b) to a dataset acquired with the high-accuracy RSP airborne instrument overflying high-altitude

snow fields. The data were processed within an automated retrieval scheme capable of isolating the surface contribution. The spectral dependence of the retrieved polarized surface reflectance is slightly larger than for soil or vegetated surfaces, but nonetheless small relative to typical aerosol contributions (cfr. Fig. 6 in O12). This fact has important implications for the construction of advanced algorithms which aim at the retrieval of the microphysical properties of aerosols layers located over ice and snow fields.

Furthermore, we applied a retrieval procedure which is demonstrated to yield snow microphysical parameters of primary climatological interest. We retrieve snowpacks behaving as a collection of grains of extreme geometries (thin plates and/or long columns) and moderate to high microscale roughness. These results reinforce those of our previous study based on a limited dataset acquired over very rugged terrain. For each scene, the best fits are obtained for a set of crystal habits characterized by very similar values of the asymmetry parameter. Size retrievals were also tested, leading grain effective diameters in the 140–180 μm range.

Appendix: Size descriptors for hexagonal prisms

The results of Macke's Geometric Optics code (Macke et al., 1996) were tabulated with the choice of the radius of the sphere with equal surface area, r_{sph} , as a size descriptor. This parameter is linked to the geometric size of hexagonal prisms and to the grain effective

diameter by the following relations:

$$A_{\text{hex}} = 4 \pi r_{\text{sph}}^2 \quad (\text{Surface area of sphere and hexagonal prism}) \quad (\text{A1})$$

$$A_{\text{p}} = A_{\text{hex}}/4 = \pi r_{\text{sph}}^2 \quad (\text{Projected surface area of hexagonal prism}) \quad (\text{A2})$$

$$r_{\text{hex}} = \sqrt{\frac{4 A_{\text{p}}}{3 \sqrt{3} + 12 \alpha}} \quad (\text{Radius or side length of hexagonal prism}) \quad (\text{A3})$$

$$V = 3 \sqrt{3} \alpha r_{\text{hex}}^3 \quad (\text{Volume of hexagonal prism}) \quad (\text{A4})$$

$$d_{\text{eff}} = \frac{3}{2} \frac{V}{A_{\text{p}}} = \frac{6 \sqrt{3} \alpha}{\sqrt{3} + 4 \alpha} r_{\text{hex}} \quad (\text{Effective diameter}) \quad (\text{A5})$$

where α is the aspect ratio, defined as the ratio of the cross section width of the prism to its length. The last expression is valid for a single particle of any solid shape. In case of a polydisperse collection of particles, the effective diameter is obtained through integration over a size distribution:

$$D_{\text{eff}} = \frac{3 \int_0^\infty V(D) N(D) dD}{2 \int_0^\infty A_{\text{p}}(D) N(D) dD} \quad (\text{A6})$$

with N denoting the number density of crystals with maximum dimension D , which can be defined as $2 r_{\text{hex}}$ for plates and $2 \alpha r_{\text{hex}}$ for columns.

Acknowledgements. This work was possible through the dedication of the ER-2 pilots Tom Ryan, Dean Neeley and Stu Broce. Their exceptional skills and proactive attitude towards the goals of the mission were critical to success. The assistance of personnel on the ground was invaluable, especially that of Hans Moosmüller from the Desert Research Institute, Davide Sartoni from Mistras-Ropeworks, Rick Brinkam from Water Services at the City of Grand Junction, Sam Williams and Aldin Strautins from NOAA, McKenzie Skiles from NASA JPL, Holly King from the Trappers Lake Lodge, and Dan Matthews and John Saye from the US Forest Service in Arapah1o National Forest. We also thank Rose Dominguez and Dennis Gearhart from NASA GSFC for providing access to the ER-2 DCS camera imagery, and the reviewers for improving the overall quality of the manuscript. The RSP

data used for this analysis are publicly available on the GISS server (<http://data.giss.nasa.gov/pub/rsp/>). The graphs were produced with IDL[®] supplemented by David Fanning's Coyote Graphics free library of routines. Partial support from the Radiation Sciences Program managed by Hal Maring is gratefully acknowledged.

References

- Aoki, T., Aoki, T., Fukabori, M., Hachikubo, A., Tachibana, Y., and Nishio, F.: Effects of snow physical parameters on spectral albedo and bidirectional reflectance of snow surface, *Journal of Geophysical Research*, 105, 10 219–10 236, 2000.
- Aoki, T., Hori, M., Motoyoshi, H., Tanikawa, T., Hachikubo, A., Sugiura, K., Yasunari, T. J., Storvold, R., Eide, H. A., Stamnes, K., et al.: ADEOS-II/GLI snow/ice products—Part II: Validation results using GLI and MODIS data, *Remote Sensing of Environment*, 111, 274–290, 2007.
- Baran, A.: A review of the light scattering properties of cirrus, *Journal of Quantitative Spectroscopy and Radiative Transfer*, 110, 1239–1260, 2009.
- Baum, B. A., Yang, P., Heymsfield, A. J., Schmitt, C. G., Xie, Y., Bansemmer, A., Hu, Y.-X., and Zhang, Z.: Improvements in shortwave bulk scattering and absorption models for the remote sensing of ice clouds, *Journal of Applied Meteorology and Climatology*, 50, 1037–1056, 2011.
- Baum, B. A., Yang, P., Heymsfield, A. J., Bansemmer, A., Cole, B. H., Merrelli, A., Schmitt, C., and Wang, C.: Ice cloud single-scattering property models with the full phase matrix at wavelengths from 0.2 to 100 μm , *Journal of Quantitative Spectroscopy and Radiative Transfer*, 146, 123 – 139, doi:<http://dx.doi.org/10.1016/j.jqsrt.2014.02.029>, 2014.
- Bi, L., Yang, P., Liu, C., Yi, B., Baum, B. A., van Dienenhoven, B., and Iwabuchi, H.: Assessment of the accuracy of the conventional ray-tracing technique: Implications in remote sensing and radiative transfer involving ice clouds, *J. Quant. Spectrosc. Radiat. Transfer*, 2014.
- Born, M. and Wolf, E.: *Principles of optics*, Cambridge University Press, 7th (expanded) edn., 1999.
- Cairns, B., Russell, E., and Travis, L.: Research Scanning Polarimeter: calibration and ground-based measurements, in: *Society of Photo-Optical Instrumentation Engineers (SPIE) Conference Series*, vol. 3754, pp. 186–196, 1999.
- Cairns, B., Waquet, F., Knobelspiesse, K., Chowdhary, J., and Deuzé, J.: Polarimetric remote sensing of aerosols over land surfaces, chap. 10, pp. 295–325, *Springer-Praxis Books in Environmental Sciences*, Chichester, UK, 2009.

- Chowdhary, J., Cairns, B., Waquet, F., Knobelspiesse, K., Ottaviani, M., Redemann, J., Travis, L., and Mishchenko, M.: Sensitivity of multiangle, multispectral polarimetric remote sensing over open oceans to water-leaving radiance: Analyses of RSP data acquired during the MILAGRO campaign, *Remote Sensing of Environment*, 118, 284 – 308, doi:10.1016/j.rse.2011.11.003, 2012.
- 5 Comiso, J. C.: Arctic warming signals from satellite observations, *Weather*, 61, 70–76, 2006.
- De Haan, J., Bosma, P., and Hovenier, J.: The adding method for multiple scattering calculations of polarized light, *Astronomy and Astrophysics* (ISSN, 183, 371–391, 1987.
- Diner, D. J., Davis, A., Hancock, B., Gutt, G., Chipman, R. A., and Cairns, B.: Dual-photoelastic-modulator-based polarimetric imaging concept for aerosol remote sensing, *Applied Optics*, 46, 8428–8445, 2007.
- 10 Dozier, J. and Painter, T.: Multispectral and hyperspectral remote sensing of alpine snow properties, *Annual Review of Earth and Planetary Sciences*, 32, 465–494, 2004.
- Dubovik, O., Herman, M., Holdak, A., Lapyonok, T., Tanré, D., Deuzé, J., Ducos, F., Sinyuk, A., and Lopatin, A.: Statistically optimized inversion algorithm for enhanced retrieval of aerosol properties from spectral multi-angle polarimetric satellite observations, *Atmospheric Measurement Techniques*, 4, 975–1018, 2011.
- 15 Fu, Q.: A new parameterization of an asymmetry factor of cirrus clouds for climate models, *Journal of the Atmospheric Sciences*, 64, 4140–4150, 2007.
- Hasekamp, O. P., Litvinov, P., and Butz, A.: Aerosol properties over the ocean from parasol multian-gle photopolarimetric measurements, *Journal of Geophysical Research*, 116, D14 204, 2011.
- Hori, M., Aoki, T., Stamnes, K., and Li, W.: ADEOS-II/GLI snow/ice products—Part III: Retrieved results, *Remote Sensing of Environment*, 111, 291–336, 2007.
- Jin, Z., Charlock, T., Yang, P., Xie, Y., and Miller, W.: Snow optical properties for different particle shapes with application to snow grain size retrieval and MODIS/CERES radiance comparison over Antarctica, *Remote Sensing of Environment*, 112, 3563–3581, 2008.
- 25 Knobelspiesse, K., Cairns, B., Mishchenko, M., Chowdhary, J., Tsigaridis, K., van Diedenhoven, B., Martin, W., Ottaviani, M., and Alexandrov, M.: Analysis of fine-mode aerosol retrieval capabilities by different passive remote sensing instrument designs, *Opt. Express*, 20, 21 457–21 484, 2012.
- Kokhanovsky, A. and Zege, E.: Scattering optics of snow, *Applied Optics*, 43, 1589–1602, 2004.
- 30 Kokhanovsky, A., Rozanov, V., Aoki, T., Odermatt, D., Brockmann, C., Krüger, O., Bouvet, M., Drusch, M., and Hori, M.: Sizing snow grains using backscattered solar light, *International Journal of Remote Sensing*, 32, 6975–7008, 2011.

- Li, W., Stamnes, K., Chen, B., and Xiong, X.: Snow grain size retrieved from near-infrared radiances at multiple wavelengths, *Geophysical Research Letters*, 28, 1699–1702, 2001.
- Liu, C., Panetta, R. L., and Yang, P.: The effective equivalence of geometric irregularity and surface roughness in determining particle single-scattering properties, *Optics express*, 22, 23 620–23 627, 2014.
- Lucht, W., Schaaf, C., and Strahler, A.: An algorithm for the retrieval of albedo from space using semiempirical BRDF models, *IEEE Transactions on Geoscience and Remote Sensing*, 38, 977–998, 2000.
- Lyapustin, A., Tedesco, M., Wang, Y., Aoki, T., Hori, M., and Kokhanovsky, A.: Retrieval of snow grain size over Greenland from MODIS, *Remote Sensing of Environment*, 113, 1976–1987, 2009.
- Macke, A., Mueller, J., and Raschke, E.: Single Scattering Properties of Atmospheric Ice Crystals, *Journal of the Atmospheric Sciences*, 53, 2813–2825, 1996.
- Nadal, F. and Bréon, F.-M.: Parameterization of surface polarized reflectance derived from POLDER spaceborne measurements, *IEEE Transactions on Geoscience and Remote Sensing*, 37, 1709–1718, 1999.
- Negi, H. and Kokhanovsky, A.: Retrieval of snow grain size and albedo of Western Himalayan snow cover using satellite data, *The Cryosphere*, 5, 831–847, 2011.
- Neshyba, S., Lowen, B., Benning, M., Lawson, A., and Rowe, P.: Roughness metrics of prismatic facets of ice, *Journal of Geophysical Research: Atmospheres*, 118, 3309–3318, 2013.
- Nolin, A. and Dozier, J.: A hyperspectral method for remotely sensing the grain size of snow, *Remote sensing of Environment*, 74, 207–216, 2000.
- Ottaviani, M., Cairns, B., Chowdhary, J., Diedenhoven, B. V., Knobelspiesse, K., Hostetler, C., Ferrare, R., Burton, S., Hair, J., Obland, M. D., and Rogers, R.: Polarimetric retrievals of surface and cirrus clouds properties in the region affected by the Deepwater Horizon oil spill, *Remote Sensing of Environment*, 121, 389 – 403, doi:10.1016/j.rse.2012.02.016, 2012a.
- Ottaviani, M., Cairns, B., Ferrare, R., and Rogers, R.: Iterative atmospheric correction scheme and the polarization color of alpine snow, *Journal of Quantitative Spectroscopy and Radiative Transfer*, 113, 789 – 804, doi:10.1016/j.jqsrt.2012.03.014, <http://www.sciencedirect.com/science/article/pii/S0022407312001379>, 2012b.
- Painter, T., Rittger, K., McKenzie, C., Slaughter, P., Davis, R., and Dozier, J.: Retrieval of subpixel snow covered area, grain size, and albedo from MODIS, *Remote Sensing of Environment*, 113, 868–879, 2009.

- Painter, T. H., Bryant, A. C., and Skiles, S. M.: Radiative forcing by light absorbing impurities in snow from MODIS surface reflectance data, *Geophysical Research Letters*, 39, 2012.
- Räsänen, P., Kokhanovsky, A., Guyot, G., Jourdan, O., and Nousiainen, T.: Parameterization of single-scattering properties of snow, *The Cryosphere*, 9, 1277–1301, doi:10.5194/tc-9-1277-2015, <http://www.the-cryosphere.net/9/1277/2015/>, 2015.
- 5 Rodgers, C.: *Inverse methods for atmospheric sounding theory and practice*, vol. 2 of *Series on atmospheric, oceanic and planetary physics*, World Scientific Publishing Company, 2000.
- Stamnes, K., Li, W., Eide, H., Aoki, T., Hori, M., and Storvold, R.: ADEOS-II/GLI snow/ice products—Part I: Scientific basis, *Remote Sensing of Environment*, 111, 258–273, 2007.
- 10 Stamnes, K., Hamre, B., Stamnes, J., Ryzhikov, G., Biryulina, M., Mahoney, R., Hauss, B., and Sei, A.: Modeling of radiation transport in coupled atmosphere-snow-ice-ocean systems, *Journal of Quantitative Spectroscopy and Radiative Transfer*, 112, 714 – 726, doi:DOI: 10.1016/j.jqsrt.2010.06.006, 2011.
- 15 Tedesco, M. and Kokhanovsky, A.: The semi-analytical snow retrieval algorithm and its application to MODIS data, *Remote Sensing of Environment*, 111, 228–241, 2007.
- Um, J. and McFarquhar, G. M.: Single-scattering properties of aggregates of bullet rosettes in cirrus, *Journal of applied meteorology and climatology*, 46, 757–775, 2007.
- Um, J. and McFarquhar, G. M.: Single-scattering properties of aggregates of plates, *Quarterly Journal of the Royal Meteorological Society*, 135, 291–304, 2009.
- 20 van Diedenhoven, B., Cairns, B., Geogdzhayev, I., Fridlind, A., Ackerman, A., Yang, P., and Baum, B.: Remote sensing of ice crystal asymmetry parameter using multi-directional polarization measurements - Part 1: Methodology and evaluation with simulated measurements, *Atmospheric Measurement Techniques*, 5, 2361–2374, 2012.
- 25 van Diedenhoven, B., Cairns, B., Fridlind, A., Ackerman, A., and Garrett, T.: Remote sensing of ice crystal asymmetry parameter using multi-directional polarization measurements - Part 2: Application to the Research Scanning Polarimeter, *Atmospheric Chemistry and Physics*, 13, 3185–3203, 2013.
- van Diedenhoven, B., Fridlind, A. M., Cairns, B., and Ackerman, A. S.: Variation of ice crystal size, shape, and asymmetry parameter in tops of tropical deep convective clouds, *Journal of Geophysical Research: Atmospheres*, 119, 11–809, 2014.
- 30

Wang, X., Liou, K., Ou, S. S., Mace, G., and Deng, M.: Remote sensing of cirrus cloud vertical size profile using MODIS data, *Journal of Geophysical Research: Atmospheres* (1984–2012), 114, 2009.

Wanner, W., Li, X., and Strahler, A.: On the derivation of kernels for kernel-driven models of bidirectional reflectance, *Journal of Geophysical Research*, 100, 21 077–21 089, 1995.

Waqet, F., Cairns, B., Knobelspiesse, K., Chowdhary, J., Travis, L., Schmid, B., and Mishchenko, M.: Polarimetric remote sensing of aerosols over land, *Journal of Geophysical Research-Atmospheres*, 114, D01 206–, 2009.

Warren, S.: Optical properties of snow, *Reviews of Geophysics*, 20, 67–89, 1982.

Yang, P., Hong, G., Kattawar, G. W., Minnis, P., and Hu, Y.: Uncertainties associated with the surface texture of ice particles in satellite-based retrieval of cirrus clouds: Part II—Effect of particle surface roughness on retrieved cloud optical thickness and effective particle size, *Geoscience and Remote Sensing, IEEE Transactions on*, 46, 1948–1957, 2008.

Yang, P., Bi, L., Baum, B. A., Liou, K.-N., Kattawar, G. W., Mishchenko, M. I., and Cole, B.: Spectrally consistent scattering, absorption, and polarization properties of atmospheric ice crystals at wavelengths from 0.2 to 100 μ m, *Journal of the Atmospheric Sciences*, 70, 330–347, 2013.

Zatko, M. C., Grenfell, T. C., Alexander, B., Doherty, S. J., Thomas, J. L., and Yang, X.: The influence of snow grain size and impurities on the vertical profiles of actinic flux and associated NO_x emissions on the Antarctic and Greenland ice sheets, *Atmospheric Chemistry and Physics*, 13, 3547–3567, doi:10.5194/acp-13-3547-2013, <http://www.atmos-chem-phys.net/13/3547/2013/>, 2013.

Zege, E., Katsev, I., Malinka, A., Prikhach, A., Heygster, G., and Wiebe, H.: Algorithm for retrieval of the effective snow grain size and pollution amount from satellite measurements, *Remote Sensing of Environment*, 115, 2674–2685, 2011.

Zwally, H. J. and Giovinetto, M. B.: Overview and assessment of Antarctic ice-sheet mass balance estimates: 1992–2009, *Surveys in geophysics*, 32, 351–376, 2011.

Table 1. List of ice crystals' parameters retrieved for the three analyzed scenes. The value in parentheses indicates the RSP band used in the retrieval. The effective diameter can be obtained using either the 2264 or the 1594 nm channel (see text), and a crystal habit characterized by the asymmetry parameter retrieved for the corresponding scene.

Retrieved Parameter	Grand Mesa	Lake Granby	Derby Peak
Asymmetry parameter (864 nm)	0.90	0.84	0.876
Aspect ratio (864 nm)	< 0.08	< 0.05	< 0.2, > 10
Roughness parameter (864 nm)	0.3–0.5	0.6–0.7	0.2–0.6
Effective diameter (2264 nm)	152 μm	182 μm	144 μm
Effective diameter (1594 nm)	122 μm	152 μm	114 μm

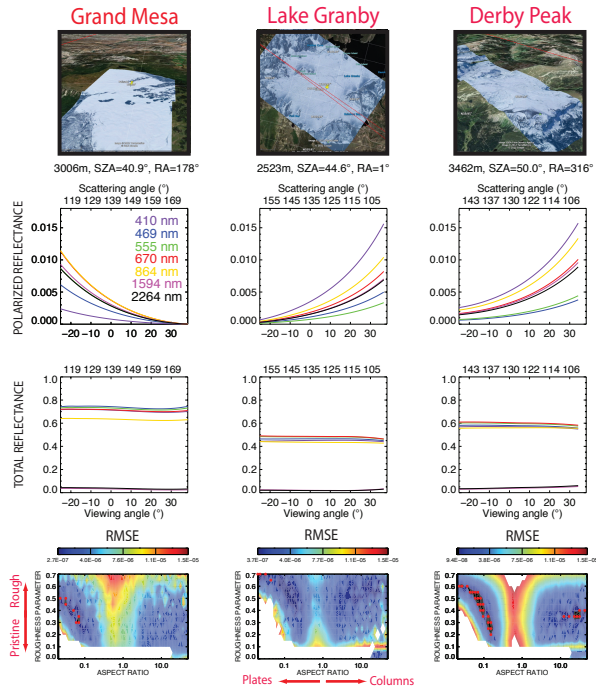


Figure 1. Atmospherically corrected polarized (*second row*) and total (*third row*) reflectance for three snow fields (*columns*) overflowed in Colorado, USA. The first row shows real-time imagery from the high-resolution camera onboard the ER-2, **captioned by the scene altitude above sea level together with the Solar Zenith Angle and the Relative Azimuth at the time of observation**. The last row pertains to the search of the optimal ice grain model: the contour plots map the RMSE of the fit to the polarized reflectance at 864 nm when simulating the snowpack with each crystal habit (i.e., each combination of aspect ratio and roughness parameter) in the database. The red circles locate the values of the RMSE falling under a predetermined threshold, and are taken to represent the retrieved (optimal) habits.

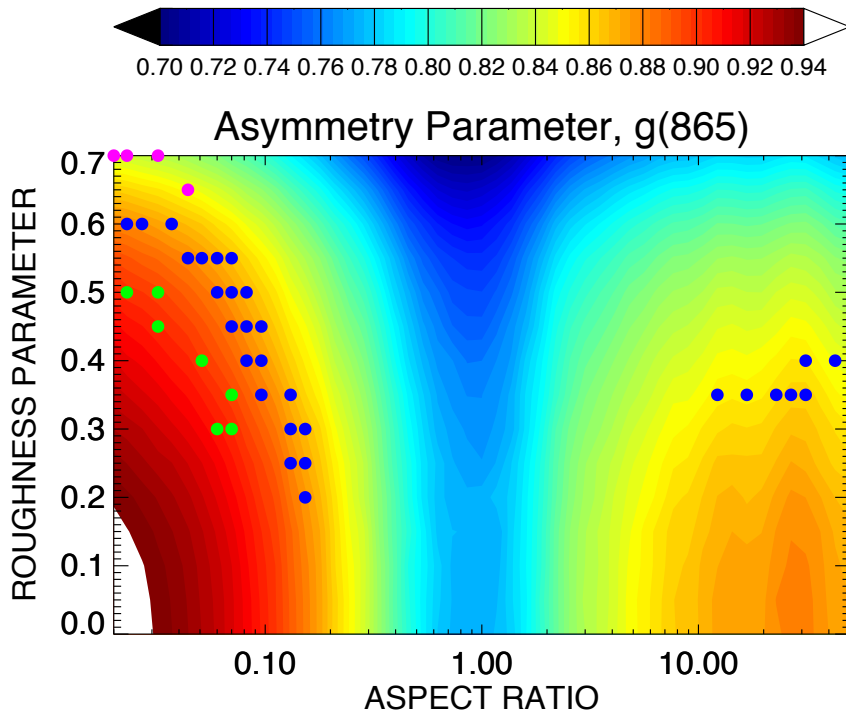


Figure 2. The “butterfly” pattern of the contour plot for the asymmetry parameter g as a function of aspect ratio and roughness parameter resembles that obtained for the RMSE plots in Fig. 1. The red circles in Fig. 1 (here in green for Grand Mesa, magenta for Lake Granby and blue for Derby Peak) that identify the retrieved optimal crystal habits are found for each scene clustered around a single value of g .

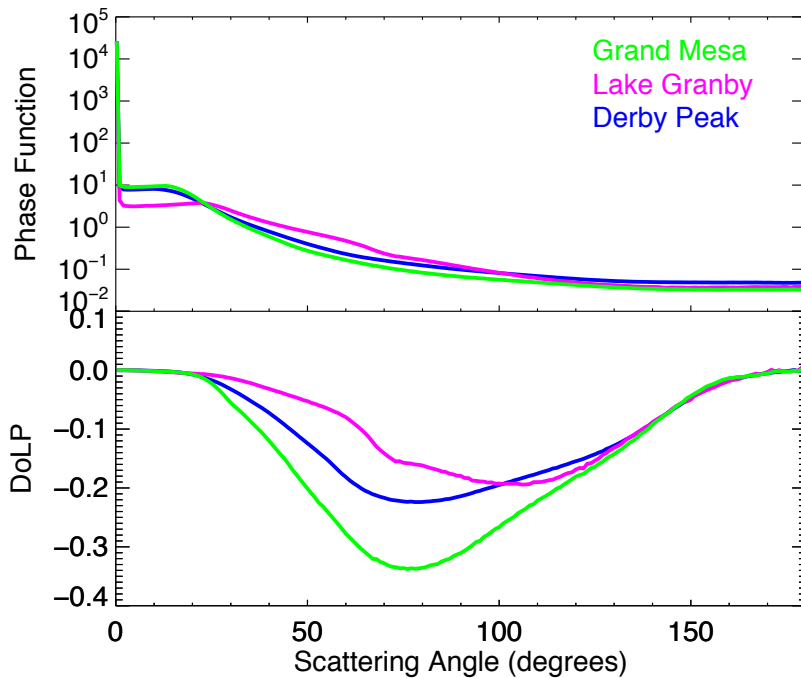


Figure 3. Phase functions (*upper panel*) and degree of linear polarization (*lower panel*), resulting from the average over the optimal habits retrieved for each scene. The color-coding is the same as in Fig. 2.