

Supplement of The Cryosphere Discuss., 9, 2745–2782, 2015
<http://www.the-cryosphere-discuss.net/9/2745/2015/>
doi:10.5194/tcd-9-2745-2015-supplement
© Author(s) 2015. CC Attribution 3.0 License.



Supplement of

Satellite observations of changes in snow-covered land surface albedo during spring in the Northern Hemisphere

K. Atlaskina et al.

Correspondence to: K. Atlaskina (ksenia.atlaskina@helsinki.fi)

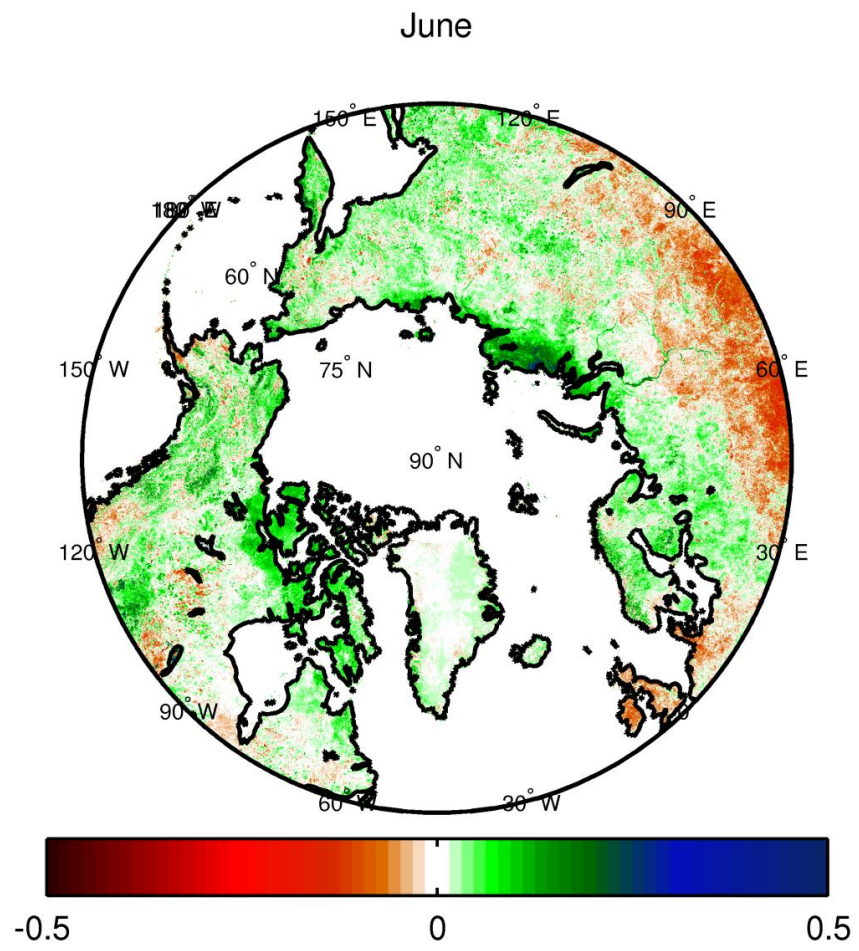


Figure S1. June EVI changes for the years 2000-2012.

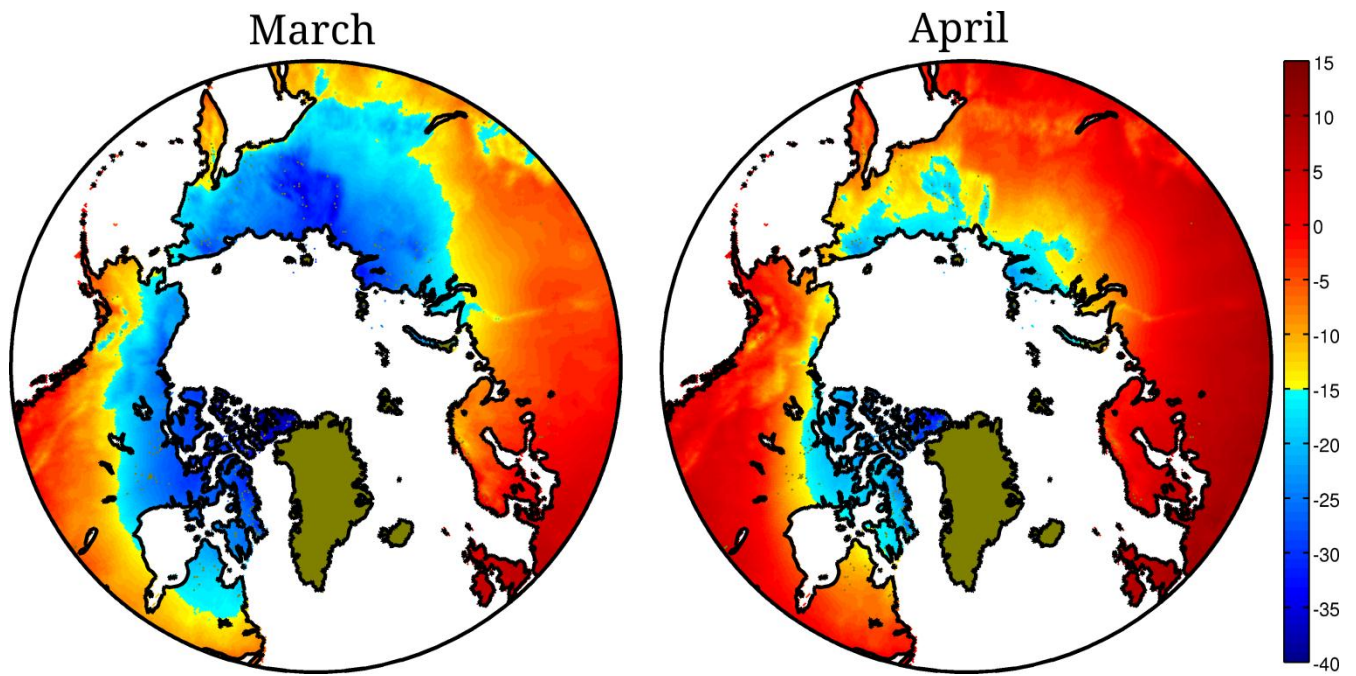


Figure S2. Mean air temperatures in March and April for the years 2000-2012.