

# **Oceanic and atmospheric forcing of Larsen C Ice Shelf thinning**

Paul R. Holland<sup>1</sup>, Alex Brisbourne<sup>1</sup>, Hugh F.J. Corr<sup>1</sup>, Daniel McGrath<sup>2,3</sup>, Kyle Purdon<sup>4</sup>, John Paden<sup>4</sup>, Helen A. Fricker<sup>5</sup>, Fernando S. Paolo<sup>5</sup>, and Andrew Fleming<sup>1</sup>.

<sup>1</sup>British Antarctic Survey, Cambridge, UK.

<sup>2</sup>USGS Alaska Science Center, Anchorage, Alaska, USA.

<sup>3</sup>Cooperative Institute for Research in Environmental Sciences, University of Colorado, Boulder, Colorado, USA

<sup>4</sup>Center for Remote Sensing of Ice Sheets, University of Kansas, Lawrence, Kansas, USA.

<sup>5</sup>Scripps Institution of Oceanography, University of California, San Diego, La Jolla, California, USA.

## Abstract

The catastrophic collapses of Larsen A and B ice shelves on the eastern Antarctic Peninsula have caused their tributary glaciers to accelerate, contributing to sea-level rise and freshening the Antarctic Bottom Water formed nearby. The surface of Larsen C Ice Shelf (LCIS), the largest ice shelf on the peninsula, is lowering. This could be caused by unbalanced ocean melting (ice loss) or enhanced firn melting and compaction (englacial air loss). Using a novel method to analyse eight radar surveys, this study derives separate estimates of ice and air thickness changes during a 15-year period. The uncertainties are considerable, but the primary estimate is that the surveyed lowering ( $0.066 \pm 0.017$  m/y) is caused by both ice loss ( $0.28 \pm 0.18$  m/y) and firn air loss ( $0.037 \pm 0.026$  m/y). The ice loss is much larger than the air loss, but both contribute approximately equally to the lowering because the ice is floating. The ice loss could be explained by high basal melting and/or ice divergence, and the air loss by low surface accumulation or high surface melting and/or compaction. The primary estimate therefore requires that at least two forcings caused the surveyed lowering. Mechanisms are discussed by which LCIS stability could be compromised in future. The most rapid pathways to collapse are offered by the ungrounding of LCIS from Bawden Ice Rise or ice-front retreat past a 'compressive arch' in strain rates. Recent evidence suggests that either mechanism could pose an imminent risk.

## 1. Introduction

The ice shelves of the Antarctic Peninsula (AP) have shown a progressive decline in extent over the last five decades, including the catastrophic collapses of Larsen A Ice Shelf (LAIS) in 1995 and Larsen B Ice Shelf (LBIS) in 2002 (Scambos et al., 2003; Cook and Vaughan, 2010). The collapse of LBIS was unprecedented in at least the last 12,000 years (Domack et al., 2005). These collapses have reduced the restraint of the ice shelves on the flow of grounded tributary glaciers, causing them to accelerate (Rignot et al., 2004; Berthier et al., 2012) and thereby contributing to sea-level rise (Shepherd et al., 2012). Increased freshwater input to the ocean from the collapses and subsequent excess ice discharge may be implicated in the freshening of Antarctic Bottom Water formed nearby (Hellmer et al., 2011; Jullion et al., 2013).

These ice-shelf collapses are thought to have been accomplished by surface meltwater-driven crevassing (van der Veen, 1998; Scambos et al., 2003; van den Broeke, 2005; Banwell et al., 2013) and ice-front retreat past a ‘compressive arch’ in strain rates (Doake et al., 1998; Kulessa et al., 2014). However, longer-term processes such as ice thinning and firn compaction must first have driven these ice shelves into a state liable to collapse by weakening the ice and enabling meltwater to pool on the ice surface. Apparently following the southward progression of ice-shelf instability on the AP, satellite altimetry shows that the surface of Larsen C Ice Shelf (LCIS) has lowered in recent decades (Shepherd et al., 2003; Pritchard et al., 2012; Paolo et al., in press). The lowering is known to be more rapid in the north of LCIS (Figure 1; updated from Fricker and Padman, 2012, as described in section 2). Ice flow in this northern region has also accelerated slightly, which may be related to a decrease in back-stress from Bawden Ice Rise following an iceberg calving in 2004/5 (Haug et al., 2010; Khazendar et al., 2011). However, the origin of the lowering remains uncertain. Since the ice shelf is floating, the lowering could be caused by a loss of firn air of nearly the same magnitude, a loss of solid ice

approximately 10 times larger, or a combination of the two. With recent evidence of unusual rifting apparently threatening the stability of LCIS (Jansen et al., 2015), there is an urgent need to understand the cause of this long-term lowering in order to project the future of LCIS and the impacts of its many glacier catchments upon sea-level rise and ocean freshening.

The LCIS lowering was initially attributed to increased oceanic basal melting (i.e. ice loss) on the basis that firn compaction from derived surface melting trends was insufficient to account for the signal (Shepherd et al., 2003). However, sparse observations of the ocean beneath LCIS found the ocean to be at or below the sea-surface freezing temperature, suggesting that it is only capable of slow melting (Nicholls et al., 2012). Observations of the meltwater emanating from the cavity (Nicholls et al., 2004) and widespread marine ice in LCIS (Holland et al., 2009; Jansen et al., 2013; McGrath et al., 2014) suggest that these temperatures are spatially and historically prevalent. Ocean waters entering the LCIS cavity appear to be constrained to the surface freezing temperature by nearby sea-ice formation. Since the Weddell Sea has consistently high rates of sea-ice production it has been regarded as hard to conceive of an ocean warming sufficient to increase melting enough to explain the lowering (Nicholls et al., 2004). However, year-round sonar measurements near Kenyon Peninsula in the south of LCIS yield a mean melt rate of  $\sim 0.8$  m/y (with a range of 0—1.5 m/y), which is significantly higher and more variable than expected (K.W. Nicholls, personal communication 2014; Nicholls et al., 2012). Furthermore, ocean data collected in January 1993 from the LCIS ice front (Bathmann et al., 1994) show anomalous waters that are considerably warmer than any subsequently observed in the cavity or inferred as sources for melting (Nicholls et al., 2004; Nicholls et al., 2012). If they entered the cavity, such warm waters could produce a melting anomaly large enough to significantly perturb the LCIS ice mass budget. Given our incomplete

understanding of ocean processes and melting beneath LCIS, oceanic thinning of LCIS remains a credible explanation for the lowering.

On the other hand, there is some evidence supporting a hypothesis that the lowering results from an atmosphere-driven increase in firn compaction (i.e. air loss), either through dry compaction or through firn melting and refreezing. In general, the AP has experienced strong atmospheric warming since the 1950s (Marshall et al., 2006; Turner et al., 2014). A spatial correspondence between ice-shelf collapses and mean atmospheric temperature suggests that atmospheric warming may have pushed some ice shelves beyond a thermal limit of viability (Morris and Vaughan, 2003); the northern edge of LCIS is at this limit. Observations of LCIS firn-air thickness confirm that there is sufficient firn air available for compaction, that lower firn air spatially corresponds with higher melting, and that the northward-intensified surface lowering spatially corresponds to areas of high melting and firn compaction (Holland et al., 2011; Trusel et al., 2013; Luckman et al., 2014). Modelled firn compaction entirely offset the lowering in one study of 2003—2008 (Pritchard et al., 2012), albeit with a high uncertainty. A temporal correspondence between high annual melting and ice shelf collapse (van den Broeke, 2005) would be expected to hold also for firn compaction before collapse. However, attributing the lowering to simple atmospheric temperature trends is not straightforward. Observed AP surface melt days and modelled meltwater fluxes both lack significant trends during 1979—2010 and have trends that are strongly negative during 1989—2010 (Kuipers Munneke et al., 2012a). An Automatic Weather Station on LCIS lacks any significant 1985—2011 trend in air temperature in any season (Valisuo et al., 2014), and there is no convincing evidence of trends in melting derived from reanalysis models during recent decades (Valisuo et al., 2014). Even without a trend in atmospheric forcing within recent decades, the period could still be

anomalous relative to the long-term mean, and so an atmosphere-driven lowering remains viable.

In summary there is a wealth of circumstantial evidence related to the lowering, but no direct test of its origin. In this study we analyse repeated radio-echo sounding surveys of LCIS, applying a novel method to separate changes in ice thickness from changes in firn-air thickness (Holland et al., 2011). The method is presented in section 2 and its results in section 3. We then consider whether the uncertainties in these ice and air trends are sufficiently well-constrained to isolate the origin of the LCIS lowering (section 4), and speculate upon the prognosis for the ice shelf's future stability (section 5).

## **2. Method**

Radar sounding provides the two-way travel time (TWTT) of a radar wave between the ice-shelf surface and base. This can be combined with accurate measurements of surface elevation to derive separate thicknesses of the solid ice and englacial firn air that comprise an ice shelf (Holland et al., 2011). With multiple surveys it is therefore possible to determine differences in ice and air thickness over time. There have been many radar surveys of LCIS, but we find that a very large number of observations are needed to sufficiently reduce the random error in the ice and air differences. Therefore, only repeated survey lines provide usable data; inter-survey cross-overs are not sufficient. Fortunately, a nearly meridional (across-ice flow) survey line sampling the centre of LCIS has been occupied eight times between 1998 and 2012 by airborne and ground-based radar surveys (Figure 1b, Table 1), offering the opportunity to derive interannual trends in ice and air thickness from these data. The survey line also passes through five satellite cross-overs of European Space Agency radar altimeter missions, allowing direct comparison to the known lowering.

## 2.1 Theory

We separate the total ice-shelf thickness into its constituent thicknesses of solid ice and firm air by following the method of Holland et al. (2011), with a few modifications. Since the floatation of an ice shelf and the propagation of a radar wave through an ice shelf both depend upon the relative proportions of ice and air, we formulate two corresponding equations from which two unknown quantities, ice and air thickness, are derived. The presence of a third unknown, liquid meltwater, is neglected on the basis that most surveys were undertaken early in the austral spring and there is no evidence of a perennial aquifer in LCIS (see section 4.3).

If the ice is freely floating then the hydrostatic ice and ocean forces must balance at the ice base, so the total mass of the shelf ice and firm air equals that of the atmosphere and ocean displaced

$$\rho_i I + \rho_a A = \rho_A S + \rho_o (I + A - S). \quad (1)$$

Here  $I$  is the total solid ice thickness,  $A$  is the total firm air thickness,  $S$  is the ice freeboard (surface elevation above sea level), and  $\rho_i = 918 \text{ kg m}^{-3}$ ,  $\rho_a = 2 \text{ kg m}^{-3}$ ,  $\rho_A = 1.3 \text{ kg m}^{-3}$ , and  $\rho_o = 1028 \text{ kg m}^{-3}$ , are densities of solid ice, englacial air (partly pressurised), atmospheric air, and ocean respectively, which are all assumed constant. Adopting a similar approach and separating the radar delay of ice from that of air using the simple, empirical Complex Refractive Index Method (e.g. Arcone, 2002), the TWTT of a radar wave through the ice shelf is

$$T = \frac{2}{c} (n_i I + n_a A), \quad (2)$$

where  $T$  is the TWTT,  $c = 3 \times 10^8 \text{ m s}^{-1}$  is the speed of light *in vacuo* and  $n_i = 1.78$  and  $n_a = 1.0$  are refractive indices of pure ice and air. Combining (1) and (2) and eliminating variables as appropriate, we obtain expressions for the constituent ice and air thicknesses (and hence total thickness,  $I+A$ ) as functions of known quantities and the measured TWTT and surface elevation:

$$A = \left[ \frac{c(\rho_o - \rho_i)}{2n_i} T + (\rho_A - \rho_o) S \right] / \left[ (\rho_a - \rho_o) + \frac{n_a(\rho_o - \rho_i)}{n_i} \right] \quad (3)$$

$$I = \left[ \frac{c(\rho_o - \rho_a)}{2n_a} T + (\rho_A - \rho_o) S \right] / \left[ (\rho_i - \rho_o) + \frac{n_i(\rho_o - \rho_a)}{n_a} \right]. \quad (4)$$

Taking the temporal derivative of these expressions, we obtain the trends in ice and air thickness as a function of the trends in elevation and TWTT:

$$\frac{\partial A}{\partial t} = \left[ \frac{c(\rho_o - \rho_i)}{2n_i} \frac{\partial T}{\partial t} + (\rho_A - \rho_o) \frac{\partial S}{\partial t} \right] / \left[ (\rho_a - \rho_o) + \frac{n_a(\rho_o - \rho_i)}{n_i} \right] \quad (5)$$

$$\frac{\partial I}{\partial t} = \left[ \frac{c(\rho_o - \rho_a)}{2n_a} \frac{\partial T}{\partial t} + (\rho_A - \rho_o) \frac{\partial S}{\partial t} \right] / \left[ (\rho_i - \rho_o) + \frac{n_i(\rho_o - \rho_a)}{n_a} \right]. \quad (6)$$

Hence, we calculate ice and air trends directly from elevation and TWTT trends; we do not derive the ice and air thickness for each survey and then calculate their trends. This explicitly excludes potentially large errors inherent in steady corrections to the input data, particularly from the geoid and mean dynamic ocean topography. Evaluating the known quantities in (5)—(6), we find that

$$\frac{\partial A}{\partial t} = 1.06 \frac{\partial S}{\partial t} - 0.114 \frac{c}{2n_i} \frac{\partial T}{\partial t} \quad (7)$$

$$\frac{\partial I}{\partial t} = -0.598 \frac{\partial S}{\partial t} + 1.06 \frac{c}{2n_i} \frac{\partial T}{\partial t}, \quad (8)$$



where the TWTT is expressed as a solid ice equivalent for clarity.

Note that the derivation of (5)—(6) from (3)—(4) neglects temporal derivatives of all densities, of which the most variable is the ocean density. Repeating the derivation and retaining ocean density terms provides an expression in which 0.3 m/y ice loss would require a  $\sim 2 \text{ kg m}^{-3} \text{ year}^{-1}$  reduction in ocean density, and 0.03 m/y air loss would require a  $\sim 0.1 \text{ kg m}^{-3} \text{ year}^{-1}$  increase in ocean density. Such changes persisting over 15 years are clearly implausible, and we conclude that ocean density changes have negligible effect.

## **2.2 Application to Larsen C Ice Shelf**

We apply the above method to eight radar surveys between February 1998 and December 2012 along a line traversing the centre of LCIS (Figure 1b, red line). The surveys were carried out by ground-based field parties and a variety of aircraft flying at different heights and speeds, and many different radar instruments and methods for measuring elevation were used (Table 1). The processed elevation and TWTT data are shown in Figures 2a and 2b. The most densely-spaced TWTT data were gathered during the 2004 NASA-CECS airborne survey, so this is chosen as a baseline dataset. For each elevation and TWTT measurement in the other surveys, we find the difference from the nearest corresponding measurement in the 2004 survey, discarding all observations that do not have a 2004 analogue within 1000 m. These elevation and TWTT differences are shown in Figures 2c and 2d. There is a great deal of scatter in the differences, which could result from several factors, including the advection of ice topography across the survey line at  $\sim 400 \text{ m/y}$  (Rignot et al., 2011). The differences are therefore binned spatially to extract the overall signals by averaging random noise, and linear trends in surface elevation and TWTT are calculated for the bins. Equations (5) and (6) are then used to

determine the trends in ice and firn-air thickness from trends in surface elevation and TWTT. We apply this methodology in two ways, first considering the overall trends for the entire survey line, and then dividing the survey into five bins, surrounding each of the five satellite crossover points (Figure 1).

The 2012 British Antarctic Survey (BAS) ground-based survey was a mission of opportunity within a wider seismic season (Brisbourne et al., 2014) and deviated from the rest of the surveys, heading due south (Figure 1b, yellow line). However, it did repeat a flight line from the 1998 BAS airborne survey, so to include the data we first calculate the mean difference between the 2012 and 1998 surveys along the meridional line, and then the mean difference between the 2004 and 1998 surveys along the primary line, and then use these to obtain the 2012—2004 difference. The results are only included in the northernmost bin when we consider along-survey variability; they are not included in the whole-survey results.

### **2.3 Radio-echo sounding survey data**

Different techniques are available for picking radar return echoes from echograms, and so to ensure that our inter-survey trends are as robust as possible the ice surface and base echoes from all surveys were re-picked in a consistent manner. Automatic first-break picks on time-windowed and scaled traces were manually edited to remove or correct mis-picks. For airborne surveys, TWTT was calculated as the difference between ice surface and basal returns from the ice-penetrating radar, thus minimising inter-survey biases by removing any error associated with the absolute accuracy of the radar. Basal return TWTTs from the ground-based survey data were corrected for the radar antenna separation. In the NASA IceBridge 2009 and 2010 and BAS 2011 airborne surveys, the altitude of the aircraft in specific sections caused the surface multiple return to appear at a TWTT similar to that of the basal return, significantly

contaminating the picks. Therefore, the radargrams were overlain with an estimate of the surface multiple return calculated from the aircraft altitude and also an estimate of the basal return derived from the aircraft altitude, surface elevation and hydrostatic assumption. Wherever the TWTT of these two signals was indistinguishable in the radargram, no basal return pick was recorded. Significant marine ice bands were omitted from all surveys, because basal returns become indistinct and the meteoric—marine transition may be visible instead.

The TWTT data are recorded with a wide variety of instruments and subject to different processing techniques to optimise the signal prior to picking. The TWTT precision in the echogram picked (i.e. the time between samples of return power; the reciprocal of the sampling rate) varies between surveys, with a mean of ~4 m ice equivalent and a range of 0.13—8.8 m ice equivalent. The 15-year TWTT change is of comparable magnitude to this precision (see below). However, the first break of the return echo is actually known at higher precision because waveform fitting is used to interpolate between samples of the return echo power. Furthermore, each inter-survey TWTT difference, from which ice and air trends are calculated, is actually the mean of a population of thousands of individual point differences. These populations are well-resolved by the TWTT precision, and so by using large numbers of data points we are able to detect mean inter-survey differences statistically at a precision much finer than that of the individual data.

TWTTs from the 2009 IceBridge survey were found to contain consistently shorter radar-wave delays than the 2009 McGrath ground-based survey despite being collected only two weeks earlier, with a mean equivalent ice thickness approximately 10 m lower and therefore a significant outlier relative to the other surveys. The data were investigated and re-picked, but the problem seems to result from transmit/receive switches not meeting their switching-time

specification in the survey (<https://data.cresis.ku.edu/#RDS>). Therefore, the 2009 IceBridge TWTT data are neglected throughout this study, other than in a test recalculation to demonstrate their effect. The laser altimeter elevation data from this survey are used in all calculations.

## **2.4 Surface elevation survey data**

Surveyed ice elevation data have several corrections applied to make them directly comparable. Corrections for the steady geoid and mean dynamic ocean topography are not required because the method employs only temporal differences in elevation, as shown by (5) and (6). All data are de-tided using the CATS2008a\_opt model (L. Padman personal communication 2014) and have a local sea-level rise of 4 mm/y removed (Rye et al., 2014).

Most of the instruments used to derive elevation were well-calibrated in the field (e.g. <http://nsidc.org/data/docs/daac/icebridge/ilatm2/index.html>), but the two BAS airborne surveys in 1998 and 2011 were not calibrated to the centimetre-scale accuracy required here. The 1998 survey passed over the open ocean in many locations, so these elevations were corrected for tides, EIGEN-6C geoid (<http://icgem.gfz-potsdam.de/ICGEM/ICGEM.html>), and DTU12 mean dynamic topography ([http://www.space.dtu.dk/english/Research/Scientific\\_data\\_and\\_models/downloaddata](http://www.space.dtu.dk/english/Research/Scientific_data_and_models/downloaddata)), and then the mean difference from zero (sea surface) of 1.01 m was removed from the entire dataset. Repeating this procedure for the 2011 survey produced a 1.33 m offset, but from only a small area of open-ocean data. Fortunately, it was possible to correct the 2011 elevations to match the well-calibrated 2010 NASA IceBridge laser altimeter survey that took place 10 weeks earlier. However, this was complicated by the issue of radar firm penetration. Radar altimetry penetrates the surface and reflects from within the firm layer, whereas laser altimetry reflects from the surface. North of 67.85 °S there is no broad-scale spatial variation in the offset

between datasets (Figure 3), implying either uniform or no radar penetration. We regard the mean offset in this area, 1.59 m, as the calibration error and subtract it from the 2011 data everywhere.

The elevation estimates derived from the two BAS radar altimeter surveys need a firn-penetration correction to make them comparable to those derived from the laser altimeters and GPS. After the above calibration, the 2011 radar altimeter survey records a progressively lower surface than the 2010 laser altimeter survey to the south of 67.85 °S, which we ascribe to firn penetration. This is qualitatively consistent with the known southward increase in firn air content (Holland et al., 2011). Therefore, we correct both the 1998 and 2011 radar altimeter surveys by adding a linear fit south of 67.85 °S to the difference between the IceBridge 2010 and BAS 2011 surveys (Figure 3). Out of necessity, the correction includes implicit assumptions that there is no firn penetration north of this during either radar survey, and that penetration to the south is identical in February 1998 and January 2011.

## **2.5 Satellite radar altimeter elevation data**

Satellite radar altimeter data are used to corroborate the surveyed elevation data and provide a context for the lowering. The satellite elevation timeseries combine radar altimeter data from the ERS-1, ERS-2, and Envisat satellites using an existing methodology (Fricker and Padman, 2012) but including new data to the end of 2011. These data consist of repeat measurements of ice-shelf surface elevation at satellite orbit crossing points, available approximately every 35 days during Austral winters (April—November) during 1992—2011.

When analysing the data we found a strong correlation between changes in elevation and changes in surface backscatter for the period 1992—1993 (the first two years of ERS-1). This

anomalous behaviour in the altimeter backscatter, which alters the shape of the waveform from which the elevation is deduced, occurs throughout Antarctica. This leads us to believe that these data may not be reliable, so we only use data from 1994 onwards in this study. Shepherd et al. (2010) and Paolo et al. (in press) also neglected data prior to 1994 in their analyses. This is important because studies of LCIS that include these early data (Shepherd et al., 2003; Fricker and Padman, 2012) derive very rapid lowering in the 1990s that is not found if the early data are neglected. To illustrate the lowering of LCIS we first consider the period 1994—2011 (Figure 1a), though our main analysis focuses upon the 1998—2011 period covered by the radar surveys (Figure 1b). During the latter period the LCIS lowering has the same general pattern, but the trends at the five crossovers covered by the survey line are slightly different. Importantly, the survey line does not sample the northern section of LCIS in which the fastest lowering occurs.

To compare elevation trends derived from the survey data to those derived from satellite radar altimeter data (Figure 4 and Table 2) a single satellite elevation trend was derived that represents all five independent satellite crossovers. First, the mean elevation for the Austral winter of 1998 was calculated for each independent crossover and subtracted from each crossover's time series. The resulting temporal elevation anomaly data were then treated as individual data points in a single merged time series, and from that a linear trend was calculated to compare to the surveyed trends. Linear trends were also calculated at each crossover, as presented in Figures 1, 5, 6, and 7.

## **2.6 Ice and air mass balances**

We consider the derived ice and air losses in the context of the ice and air mass balances of LCIS. The mass balance of the ice fraction of the ice shelf (i.e. excluding firn air) yields an equation governing the depth-integrated ice thickness

$$\frac{\partial I}{\partial t} + I \nabla \cdot \mathbf{u} + \mathbf{u} \cdot \nabla I = a_I - m_I \quad (9)$$

where  $\mathbf{u}$  is the two-dimensional horizontal ice velocity vector,  $a_I$  is net surface ice accumulation, and  $m_I$  is basal melting. The mass balance of the air fraction of the ice shelf yields a similar equation for depth-integrated air thickness

$$\frac{\partial A}{\partial t} + A \nabla \cdot \mathbf{u} + \mathbf{u} \cdot \nabla A = a_A - m_A - d \quad (10)$$

where  $a_A$  is the air trapped in the firn by accumulation,  $m_A$  is the loss of air by surface melting, percolation, and refreezing, and  $d$  is the loss of air by dry compaction. The terms on the left-hand side of both equations are the unsteady term, divergence, and advection.

When analysing the results we map the terms in the ice mass balance (9) following a previous study (McGrath et al., 2014) that combined data from several sources. Divergence, advection, and mass input terms can be mapped from satellite-based observations of ice velocity (Rignot et al., 2011) and ice-shelf elevation (Griggs and Bamber, 2009), firn-air thickness derived from airborne radar measurements (Holland et al., 2011), and model estimates of net surface accumulation (Lenaerts et al., 2012). Though we also possess a spatial map of ice surface elevation change, an unknown fraction of this is caused by firn-air changes and so we cannot derive ice thickness change outside the temporal and spatial range of our survey data. Neglecting the unsteady term, we can derive a map of steady-state melting from the other terms.

Prior to these calculations the ice thickness and velocity fields are smoothed over a 20-km footprint (masked outside the ice shelf) to remove small-scale noise that is amplified in the spatial derivatives. The firn-air mass balance (10) contains so many unknown quantities that we do not attempt to derive its terms.

### **3. Results**

We first present the main results of the study, before a full analysis of the uncertainties in section 4.

#### **3.1 Trends over the whole survey line**

Figure 4 shows the elevation and TWTT for each survey, as mean differences from 2004 over the entire survey line, and Table 2 gives the ‘primary’ derived trends for these ‘reference’ data and also a variety of alternatives. Since the data points and their error bars refer to differences from 2004, the 2004 data are zero for both elevation and TWTT, with zero error. The surveyed elevation differences show a lowering trend ( $-0.066 \pm 0.017$  m/y) that is very similar to that obtained from the satellite altimeter data ( $-0.062$  m/y); the trends are not expected to be identical due to method uncertainties and spatial and temporal differences in sampling. Crucially, there is also a decreasing trend in surveyed TWTT ( $-0.296 \pm 0.17$  m/y ice equivalent), though there is considerably more inter-survey scatter in this quantity and uncertainty in the resulting trend (see section 4.3). Combining these observed trends using (5) and (6) reveals that the surface lowering is caused by a combination of air loss ( $-0.0367 \pm 0.026$  m/y) and ice loss ( $-0.274 \pm 0.18$  m/y). Ice loss is an order of magnitude larger than air loss, but surface lowering is approximately ten times more sensitive to air loss than ice loss, so ice and air loss contribute approximately equally to the surface lowering. There is considerable scatter in the data and several sources of uncertainty in the methodology, but our conclusion that ice and air loss both



contribute to the lowering is robust when several different combinations of data are used in the calculations (see section 4).

### **3.2 Variation within survey line**

We now consider spatial variability by binning the survey data around each satellite crossover (Figure 5a). The derived ice loss is reasonably uniform along the line, while the derived air loss is noticeably higher towards the southern end of the survey line. However, the surveyed elevation trends at the southern end of the line show considerably more lowering than the satellite elevation trends. Inspection of the data underlying the timeseries in each bin (Figure 6) reveals that the surveyed elevations are reasonable apart from the 1998 data in the southernmost bin (centred on 68.3 °S), which exceed the range of the figure. We consider the satellite altimeter data to be a more reliable measure of lowering because the 1998 surveyed elevation data are subject to calibration and firn-penetration corrections that are uncertain in this area (see section 2.4). The TWTT data are not subject to these uncertain corrections, so we retain these and recalculate the ice and air trends with the surveyed elevation trends replaced by the satellite elevation trends (Figure 7a). This has virtually no effect on the derived ice loss, but removes the air loss completely from the southernmost bin, so that the air loss is concentrated on the centre of the survey line.

The air and ice losses shown in Figures 5a and 7a are scaled so that their resultant surface lowering can be read on the left-hand axis. Figure 7a suggests that air loss contributes the majority of the lowering in the centre of the survey line, while ice loss also contributes to this lowering and is responsible for the lowering at both ends. It is unsurprising that the ice and air loss have different spatial patterns, given their different (oceanic, ice-dynamic, and atmospheric) forcings.

399

### 400 3.3 Ice and air budgets

401 Figure 8 shows the maps of each term in the LCIS ice mass balance (9). Thinning along  
402 flowlines causes a sink of ice through divergence (Figure 8a), advection is generally a source  
403 of ice where the ice shelf flows from thick to thin (Figure 8b), and modelled surface  
404 accumulation is almost uniform (Figure 8c). Their sum, the steady melting map (Figure 8d),  
405 contains obvious artefacts but also many features that match our existing knowledge of ocean  
406 melting beneath LCIS. For example, the results are in agreement with a simple ocean-layer  
407 model (Holland et al., 2009) that predicts strong melting along the grounding line and freezing  
408 in the thinner ice immediately offshore of islands and peninsulas on the western coast (also  
409 visible as negative values in the advection term). A more sophisticated three-dimensional ocean  
410 model (Mueller et al., 2012), forced only by tides, predicts large values of tidally-driven  
411 melting next to Bawden Ice Rise and Kenyon Peninsula, which also seem apparent in Figure  
412 8d, though other areas of high melting near the ice front and south of Kenyon Peninsula are not  
413 consistent with the model.

414

415 Combining the estimated mean terms in the ice mass budget (Figure 8) with the ice loss derived  
416 along the survey line (Figures 5a and 7a) allows us to consider the full unsteady ice budget  
417 (Figure 5b and 7b). The basic ice balance is between accumulation and divergence, with  
418 advection becoming important at the southern end of the line. If the ice shelf were in steady  
419 state the derived oceanic melt rate would be an order of magnitude smaller than accumulation  
420 and divergence (0.06 m/y). In fact, our derived ice loss profiles suggest a mean oceanic melt  
421 rate over the survey line of 0.26 m/y, peaking at 0.5 m/y in the southernmost bin. These  
422 estimates are consistent with modelled patterns of melting (Holland et al., 2009; Mueller et al.,  
423 2012) and observations in a higher-melting region nearby (K.W. Nicholls, personal

communication 2014; Nicholls et al., 2012). Crucially, without basal melting the components of the mass budget are approximately balanced, so the majority of the melting is causing net ice loss. This emphasizes that for ice shelves melted by cold ocean waters, relatively small absolute changes in melting can have a significant influence on the ice shelf mass balance. In comparison, warm-water ice shelves such as Pine Island Glacier can have much larger melting perturbations (e.g. 5 m/y; Wingham et al., 2009), causing correspondingly large thinning rates, but these perturbations are a much smaller fraction of the mean melt rate (e.g. 100 m/y; Dutrieux et al., 2013).

The terms in the analogous firn-air budget are extremely uncertain. To put the derived air loss of 0.04 m/y into context, we simply note that there was 10—15 m of air in the surveyed section during the 1997/98 survey (Holland et al., 2011), and if fresh snow is deposited at a density of 350—450 kg m<sup>-3</sup> (Kuipers Munneke et al., 2012b) then the accumulation of 0.5 m/y ice implies the addition of 0.5—1 m/y firn air each year before compaction is taken into account. Therefore, our best estimate is that the net air loss is only 5-10% of the annual air input.

#### **4. Error estimation**

The data contain a considerable amount of scatter and their interpretation relies upon a clear understanding of the uncertainties inherent in the derived trends. For this reason, we present a thorough error analysis before proceeding to discuss the implications of our findings. This analysis starts with a simple technique for visually assessing the reliability of the results, before proceeding to more formal methods.

##### **4.1 Visual Assessment**

It is possible to visually assess the reliability of ice and air trends from appropriately-plotted trends in elevation and TWTT. If the TWTT trend is expressed as a solid-ice surface-elevation equivalent, i.e.

$$\frac{\partial T_s}{\partial t} = \frac{c}{2n_i} \frac{\rho_o - \rho_i}{\rho_o - \rho_A} \frac{\partial T}{\partial t}, \quad (11)$$

then comparing  $\partial T_s / \partial t$  to the elevation trend  $\partial S / \partial t$  allows us to determine the value of  $\partial A / \partial t$  from (5). Any elevation trend that is more negative than  $\partial T_s / \partial t$  implies a loss of air, with the air loss equal to 1.06 times the difference between  $\partial S / \partial t$  and  $\partial T_s / \partial t$ . For this purpose, the two y-axes of Figures 4, 5a, 6, and 7a are scaled such that the left-hand axis shows both ice surface elevation ( $\partial S / \partial t$ ) and TWTT expressed as solid-ice surface equivalent ( $\partial T_s / \partial t$ ). Consideration of the numerator of (6) shows that  $\partial T_s / \partial t$  merely has to be more negative than  $-0.107 \times \partial S / \partial t$  to imply a loss of ice; any  $\partial T_s / \partial t$  that is negative enough to be distinguished in the figures implies some ice loss. In plain terms, Figure 4 is scaled such that if the red line (scaled TWTT trend) is parallel to the green line (elevation trend) then the lowering is due solely to ice loss, and if the red line is flat then all of the lowering is due to air loss.

These criteria allow a simple visual assessment of the signal present in the available data. Our assessment of Figure 4 is that the scaled TWTT is decreasing, but that this result is not robust in the sense that it is dependent upon all datasets and removing certain surveys would remove the calculated trend. This reduces confidence in the conclusion that ice loss has occurred. On the other hand, we do not believe that the scaled TWTT data could support a trend that is more negative than the elevation trend, and therefore we are confident in our conclusion that air loss has occurred.

A formal analysis revisits these conclusions below, but this requires many assumptions about the nature of the errors and so is not necessarily superior. There are many sources of error in our surveys, which we divide into two classes. The first class of errors produces random intra-survey scatter, which affects the extent to which the data from each survey estimate the mean signal within that survey. The second class of errors create a systematic signal across a whole survey, directly affecting inter-survey differences. The latter are of greatest concern because they have the largest effect on trends.

## 4.2 Intra-survey errors

Predominantly intra-survey errors include:

- Instrument and processing error (including radar picking error, assumed intra-survey because all surveys were re-picked consistently).
- Spatial offset from the 2004 survey reference line (there is no systematic spatial difference between surveys, but the data deviate from a straight line within surveys, and the mean east—west gradients in ice thickness and firn air thus induce intra-survey error).
- Advection of complex ice topography through the survey line (assumed intra-survey because ice features are smaller than both the along-survey distance and the advection lengthscale in the across-survey direction: 15 years  $\times$  400 m/y).

We can easily quantify these random errors by considering, for each survey, the statistics of each population of differences of data points from their 2004 analogues (Table 3). Standard deviations are relatively large, 1—2 m for elevation and ~10 m ice equivalent for TWTT, as expected from previous analyses of the error in individual point measurements (Holland et al., 2009). However, when all data are considered the standard errors are small due to the large

sample sizes. Assuming that the differences are independent and normally distributed, 95% confidence interval bounds for the survey mean are given by multiplying the standard error by 1.96, as shown by the error bars in Figure 4. We estimate overall 95% confidence interval bounds as  $\pm 0.04$  m for elevation and  $\pm 0.5$  m ice equivalent for TWTT. Thus, from a random error perspective, we are confident that all surveys differ significantly from 2004 apart from the elevation differences in the 2011 and McGrath 2009 surveys and both elevation and TWTT datasets in 2012. Simple examination of the error bars in Figure 4 shows that variation within these random error bounds will have negligible effect on the computed trends.

### **4.3 Inter-survey errors**

Predominantly inter-survey errors include:

- Differences between survey instruments, calibration, and processing (radar altimeter penetration, ice-penetrating radar power and frequency, speed and altitude of acquisition platform).
- Time-variable presence of liquid meltwater in the firn column.
- Time-variable firn penetration in the ice-penetrating radar surface pick.
- The time-variable part of dynamic ocean topography (inter-survey because most surveys are rapid compared to the relevant variations in ocean flow; affects elevation only).
- Error in the tidal model correction (inter-survey because most surveys are rapid compared to tides; affects elevation only).
- The inverse barometer effect (inter-survey because most surveys are rapid compared to the relevant variations in atmospheric pressure; affects elevation only).

An initial concern is that the NASA IceBridge and NASA-CECS surveys (high-altitude, high-speed, consistent radar systems, laser altimeter) differ from the BAS airborne surveys (lower-altitude, slower, different radar, radar altimeter) and both differ from the ground-based surveys (low-frequency radar, GPS elevation). However, the three types of survey are interleaved in time, so such differences do not necessarily cause systematic trends. The issue is assessed by re-calculating the trends using different combinations of data (Table 2). Considering only the two BAS surveys produces broadly the same results. However, considering only NASA IceBridge and NASA-CECS surveys produces a much weaker surface lowering and no decrease in TWTT, so that the ice loss disappears. Systematically removing the surveys from the calculation reveals that it is neglecting the BAS 1998 survey that removes these trends (Table 2). We know of no reason to neglect this survey, but this suggests that we treat TWTT and ice trends with additional caution.

The presence of meltwater in the firn would require us to adapt the methodology because it affects both the hydrostatic floatation and radar-wave delay of the ice shelf, as described by Holland et al. (2011), leading to different ice and air thicknesses being derived from the same TWTT and elevation. This potentially confounding issue is neglected because most surveys were sampled in November, before the onset of melt (Barrand et al., 2013), and instrumented boreholes have revealed no evidence of a perennial aquifer (K. W. Nicholls and B. Hubbard, personal communications, 2015). However, the two BAS surveys were sampled in summer and could be contaminated by the presence of meltwater. Repeating the derivation of (3) and (4) but including the effects of meltwater produces new equations from which 0.57 m more air and 5.6 m less ice would be derived for every 1 m of meltwater present (Holland et al., 2011). A maximum LCIS meltwater content of 0.4 m (Holland et al., 2011) therefore implies a maximum underestimate of 0.23 m air and overestimate of 2.24 m ice. The summer of 1997/98 was a high

melting year (Tedesco, 2009), and if meltwater was present during the 1998 survey the derived air content should be higher and ice content lower, enhancing the air loss trend and reducing the ice loss trend. A linear regression to 0.23 m air error and -2.24 m ice error in 1998 and no meltwater-derived error in the other surveys yields maximum trend errors of -0.0137 m/y air and +0.134 m/y ice. Melt estimates for 2010/11 are not available, but any 2011 meltwater would have the opposite effect on the inter-survey trends to 1998 meltwater, and thus mitigate this issue.

For the airborne surveys, surface penetration could affect both radar altimeters and the surface pick of ice-penetrating radars. We have used a penetration correction in radar altimeter data (see above), and their agreement with the satellite elevation trend implies that deviation from this correction is not important. Our strategy of finding the ice TWTT by picking the surface and basal returns and differencing the result means that surface penetration could affect the TWTT. We examine this by comparing the radar surface picks with altimeter data. This test is imperfect because it introduces errors from the aircraft altitude and surface elevation data, and requires absolute accuracy in the radar data that is not needed of the TWTT differences used. The test cannot even be performed for the NASA IceBridge and NASA-CECS surveys because the absolute timing of the radar pulse transmission is not known to the required accuracy. The mean difference between altimeter-derived surface elevations and radar-derived surface elevations is 2.14 m for the BAS 1998 survey and 2.38 m for the BAS 2011 survey. The altimeter-derived elevation is higher than the radar-derived elevation in both cases, so the difference may be caused by surface penetration. This very limited dataset suggests that radar firn penetration is of order 2 m, with an interannual variability of order 0.2 m.



These differences between radar surface picks and altimeter data are also the only independent information we have to quantify overall inter-survey error in TWTT differences. They are again imperfect in this role because they include error in aircraft altitude and surface elevation data that does not appear in the TWTT differences used in (5) and (6). Also, if the error in basal and surface picks is identical (e.g. from an absolute calibration error) then the error in their difference is zero. On the other hand, if the surface and basal errors are uncorrelated and of the same magnitude then the TWTT difference error is the surface pick error multiplied by  $\sqrt{2}$ . We believe that an inter-survey error of 2 m ice equivalent for TWTT is a reasonable compromise, and this value is in good agreement with the deviation of the TWTT points from the trend line in Figure 4.

The effects of unsteady dynamic ocean topography, error in the tidal correction, and inverse barometer effect should each contribute an inter-survey error of order 0.1 m to the surface elevation differences (L. Padman, personal communication, 2014; Padman et al., 2003; King and Padman, 2005). If these errors are uncorrelated, this would create a total error of about 0.2 m, and this estimate is consistent with both the deviation of the surveys from the linear trend and the difference in elevation between the two 2009 surveys (Figure 4). In any case, the surface lowering from the satellite crossovers provides an independent test of the surveyed elevation trend, and the two trends are only slightly different (Table 2), as might be expected from the difference in spatial and temporal sampling.

Given these overall inter-survey error estimates (0.2 m elevation and 2 m TWTT ice equivalent), we used a Monte Carlo approach to estimate the resultant uncertainty in the elevation and TWTT trends. The trends were recalculated 500,000 times with all data points subject to a perturbation drawn from a normal distribution with 95% confidence interval

bounds equal to the error estimates. This yields a population of trends with 95% confidence interval bounds of  $\pm 0.017$  m/y for elevation trends and  $\pm 0.17$  m/y ice equivalent for TWTT trends. Evaluating the terms as in (7) and (8) and combining the errors in quadrature yields

$$\varepsilon_{At} = \sqrt{0.013\varepsilon_{Tt}^2 + 1.13\varepsilon_{St}^2} \quad (12)$$

$$\varepsilon_{It} = \sqrt{1.13\varepsilon_{Tt}^2 + 0.36\varepsilon_{St}^2}. \quad (13)$$

Where  $\varepsilon_{At}$ ,  $\varepsilon_{It}$  and  $\varepsilon_{St}$  are errors in  $\partial A/\partial t$ ,  $\partial I/\partial t$ , and  $\partial S/\partial t$  respectively. The symbol  $\varepsilon_{Tt}$  represents the error in  $c/2n_i \partial T/\partial t$ , TWTT converted to solid ice thickness. These formulae yield uncertainties of  $\pm 0.026$  m/y for  $\partial A/\partial t$  and  $\pm 0.18$  m/y for  $\partial I/\partial t$ .

#### 4.4 Error summary

In summary, formal error estimates suggest that both the ice and air loss derived in our reference calculation are robust. However, visual assessment of Figure 4 suggests that the data support air loss more strongly than ice loss. Recalculating the trends with different combinations of the data (Table 2) shows that almost all possible calculations have significant air loss; the only way to obtain insignificant air loss is to include 2009 IceBridge TWTT data known to be erroneous. On the other hand, removing either the BAS 1998 or McGrath 2009 surveys is sufficient to render the ice loss insignificant. Any meltwater that were present during the BAS 1998 survey would further strengthen the air loss and weaken the ice loss. Our best estimate is that the lowering is a result of both air loss and ice loss, but there remains a possibility that air loss is solely responsible.

The preceding calculations apply to the whole-survey comparisons shown in Figure 4. The latitude bins shown in Figures 5—7 contain fewer data, so the intra-survey standard error

should increase. Standard errors scale with the reciprocal square root of the number of datapoints, so the 95% confidence interval bounds approximately double ( $\pm 0.08$  m for elevation and  $\pm 1$  m ice equivalent for TWTT) when the data sample size are reduced by a factor of 5. Inter-survey systematic error should in principle remain similar, but on the shorter length scale of an individual bin, several intra-survey errors become inter-survey in character (differences in radar picking, survey path, and advection of ice features, which can be a significant fraction of a bin length in the along-survey direction). Scrutinising the time series in Figure 6 suggests a reasonable confidence in the binned trends. In most cases a downward trend of the TWTT is apparent, suggesting some ice loss has occurred, and the scaled TWTT data would not support a downwards trend steeper than the satellite elevation, suggesting air loss has occurred. The steepest elevation trends and shallowest TWTT trends are in the centre of the survey line, implying greatest air loss.

## **5. Discussion**

The uncertainties are considerable, but our primary estimate is that the lowering ( $0.066 \pm 0.017$  m/y, or  $0.99 \pm 0.26$  m) is caused by both ice loss ( $0.28 \pm 0.18$  m/y, or  $4.2 \pm 2.7$  m) and firn air loss ( $0.037 \pm 0.026$  m/y, or  $0.56 \pm 0.39$  m). It is notable that though their effect on the lowering is approximately equal, ice loss is an order of magnitude larger than air loss. The derivation of these values allows us to speculate upon the possible sources of the changes, and their future implications.

### **5.1 Sources of change**

The existence of mean rates of change in ice and air over our 15-year period imply an imbalance in the other terms of (9) and (10) during this time. We consider the ability of each of these terms to cause the imbalance and therefore the ice and air losses. Whether the budget was ever

balanced in the past, with the observed imbalance then implying that changes have occurred, is a separate question that we cannot answer.

We start with sources and sinks. Above-balance basal melting will cause ice loss but not air loss, and can easily account for our ice loss signal. Any melting greater than a few centimetres per year can cause an imbalance (Figure 7), and observations and models easily support the rates of  $\sim 0.26$  m/y needed to explain the ice loss (Holland et al., 2009; Mueller et al., 2012; Nicholls et al., 2012). Above-balance surface melting and refreezing or dry compaction (through atmospheric warming) will cause only air loss, and it is again easy for these processes to account for the air loss signal observed here. Below-balance surface accumulation will cause air and ice loss at a ratio of 2:1—1:1 if snow is initially deposited at a density of 350—450 kg m<sup>-3</sup> (Kuipers Munneke et al., 2012b) and compensating compaction changes are ignored. Below-balance accumulation of approximately half of the modelled value (Figure 7) would be required to solely explain our ice loss, and the fact that our ice loss is an order of magnitude larger than the air loss suggests that below-balance accumulation alone cannot account for both. A small below-balance accumulation could, however, explain the air loss. Since the total input of air into the firn is 0.5—1 m/y, relatively small anomalies in surface melting, dry compaction, or accumulation are required to yield the observed 0.04 m/y air loss.

We now turn to dynamic mechanisms. Above-balance ice flow advection will affect air and ice thicknesses in proportion to their relative gradients along-flow. According to the results of Holland et al. (2011), increased advection would enhance the flow of thicker ice with less firn air across the survey line. The air thickness increases along-flow by approximately 1 m for every 10 m decrease in along-flow ice thickness. Above-balance advection would therefore cause air loss, but accompanied by ice gain approximately ten times faster, which entirely

contradicts our observed signals. Above-balance ice flow divergence will cause air and ice losses in proportion to their relative thicknesses, approximately 1:30 for characteristic ice and air thicknesses of 10 m and 300 m. The largest velocity change in the literature is an acceleration of 80 m/y between 2000 and 2006 surveys of northern LCIS (Haug et al., 2010; Khazendar et al., 2011). If this acceleration caused unbalanced divergence over a length scale of 100 km, it would cause ice loss of  $\sim 0.24$  m/y and air loss of  $\sim 0.008$  m/y. Above-balance divergence could explain the ice loss, but not the air loss, if maintained at this level and not accompanied by above-balance advection.

In summary, the ice loss we observe could be explained by above-balance basal melting and/or ice divergence, and the air loss could be explained by below-balance accumulation and/or above-balance surface melting and/or compaction. Our results therefore suggest that at least two different forcings caused the lowering of LCIS during our survey period. Elsewhere around Antarctica, rapid ice-shelf thinning is thought to be driven by unbalanced ocean melting (e.g. Shepherd et al., 2004; Holland et al., 2010; Padman et al., 2012; Khazendar et al., 2013), and our robust evidence of a firn-air loss from LCIS in response to surface processes is the first direct evidence of an exception to this. The existence of at least two different mechanisms underlying the change is also consistent with our observation that the ice and air loss signals have different spatial variation along the survey line.

The surveys do not encompass all of the known ice-shelf lowering (Figure 1), and it is likely that the balance of ice and air losses, and their driving mechanisms, varies in different regions and periods. In particular, our surveys do not capture the rapid lowering in northern LCIS. Ice divergence may play a part in this, since the known acceleration of LCIS is northward-intensified (Haug et al., 2010; Khazendar et al., 2011), but there are also good reasons to expect

changes in surface melting to be largest in the north (Holland et al., 2011; Trusel et al., 2013; Luckman et al., 2014). The pattern of changes in basal melting is unknown.

## **5.2 Ice-shelf stability**

Our results have important implications for the future stability of LCIS and thus the AP Ice Sheet. Previous ice-shelf collapses are thought to have been accomplished by surface meltwater-driven crevassing (van der Veen, 1998; Scambos et al., 2003; van den Broeke, 2005; Banwell et al., 2013) and ice-front retreat past a ‘compressive arch’ in strain rates (Doake et al., 1998; Kulessa et al., 2014). We conceive several interconnected mechanisms by which LCIS stability could be compromised: 1) ice-front retreats past a compressive arch; 2) increased surface melting causes firm depletion and meltwater-driven crevassing; 3) decreased ocean freezing or increased melting depletes marine ice, permitting the propagation of crevasses; 4) collapse of the remnant LBIS opens a new ice front at the northern margin of LCIS; 5) ungrounding from Bawden Ice Rise removes an ice-front pinning point; 6) ice thinning and acceleration enhances the propagation of crevasses and weakens shear zones.

### **5.2.1 Retreat past compressive arch**

Doake et al. (1998) suggested that LBIS was stable when the second principal strain rate was compressive inshore of a ‘compressive arch’ near the ice front. Once this arch was breached by calving, a significant collapse followed. Kulessa et al. (2014) showed that LCIS has a large region in which the second principal stress is tensile and thus offshore of a compressive arch. Kulessa et al. (2014) also considered the angle between the flow and first principal stress under the assumption that rifts strike perpendicular to flow, arguing that a first principal stress aligned with the flow would tend to open rifts, rendering the ice shelf unstable. LCIS has a large region with first principal stress across-flow, stabilising the ice shelf according to this measure. This

region is secured by marine ice, but there is clearly a risk that calving will remove ice that stabilises rifts and shields the compressive arch, leading to progressive collapse of LCIS. Worryingly, a rift in the south of LCIS has propagated rapidly beyond a band of marine ice that has stabilised all such rifts during the observational era (Jansen et al., 2015). Depending upon its evolution, this rift may threaten the LCIS compressive arch within a few years.

### **5.2.2 Meltwater-driven crevassing**

The collapse of many AP ice shelves has been linked to the availability of surface meltwater to enhance the downward propagation of surface crevasses (Scambos et al., 2003; van den Broeke, 2005; Banwell et al., 2013). There are significant crevasse fields on LCIS, so we hypothesise that future increases in meltwater ponding could contribute to ice shelf collapse. Currently, meltwater ponds form in limited areas near the LCIS grounding line (Holland et al., 2011; Luckman et al., 2014), but these do not pose an imminent risk of collapse. Before more extensive ponding can occur it is necessary for the firn to be depleted of its air content, since otherwise meltwater will simply percolate and refreeze. Holland et al. (2011) showed that northern LCIS had approximately 10 m of firn air in 1998, while the retreating LBIS had very little. Our derived air loss of 0.04 m/y would require 250 years to deplete 10 m of air and threaten LCIS stability. However, the lowest air content and highest lowering are north of the survey line, and it is likely that surface melting will increase over the coming centuries (Kuipers Munneke et al., 2014), so this timescale is probably an upper bound.

### **5.2.3 Depletion of marine ice**

LCIS is stabilised by marine ice (Holland et al., 2009; Khazendar et al., 2011; Jansen et al., 2013; Kulesa et al., 2014; McGrath et al., 2014), so decreased marine ice deposition or increased melting could allow LCIS to collapse under its existing strain field. Marine ice at the

ice front can form a very small fraction of the ice column, implying that the stability of basal crevassing and calving is controlled by only tens of metres of marine ice (McGrath et al., 2014). Elsewhere the marine ice can be hundreds of metres thick (Jansen et al., 2013; Kulesa et al., 2014; McGrath et al., 2014). If our ice loss of 0.3 m/y is caused by unbalanced basal melting, this suggests a timescale of 170 years to remove the bottom 50 m of ice, destabilising the ice front, and 500 years to remove 150 m of ice, destabilising the eastern half of LCIS. These timescales are extremely uncertain because the ocean processes driving melting and freezing are unknown and impossible to project. If marine ice deposition were to cease altogether, it would take 400—500 years to remove the existing marine ice from LCIS by lateral ice advection and iceberg calving.

#### **5.2.4 Collapse of remnant LBIS**

Albrecht and Levermann (2014) propose that an ice-shelf collapse can destabilise neighbouring ice shelves by changing their stress regime. For LCIS, this translates into the risk that a LBIS collapse removes buttressing by ungrounding ice along Jason Peninsula. When the majority of LBIS collapsed in 2002, a remnant ice shelf was left immediately adjacent to LCIS (Figure 9a). This ice is accelerating and apparently weakening (Khazendar et al., in press), so we consider the impact upon LCIS of its potential removal. Jason Peninsula anchors a large area of stagnant ice that is a significant stabilising influence on both LCIS and the remnant LBIS (Figure 9a). The ice dividing LCIS and LBIS, Phillipi Rise, is poorly surveyed but appears to be well-grounded at present, 150 m above floatation (calculated using 5 m firn air from Holland et al. (2011), EIGEN-6C geoid, and mean dynamic ocean topography of -1 m; Figure 9b). However, the ice base is hundreds of metres below sea level (Figure 9c), so if the remnant LBIS were to collapse it is possible that subsequent ice thinning could unground Phillipi Rise, removing buttressing from LCIS and opening a new oceanographic pathway. The timescale for such a



possibility is impossible to predict and, given the stagnant nature of this ice, it is unclear to what extent this would influence LCIS stability.

#### **5.2.5 Ungrounding from Bawden Ice Rise**

An ungrounding from Bawden Ice Rise would prompt significant acceleration of LCIS (Borstad et al., 2013) and re-organisation of its strain field, probably destabilising the ice front (Kulesa et al., 2014). Bawden is only a few kilometres across, but has a significant effect upon the flow and structure of the ice shelf (Figure 10a). Three radar survey lines show that Bawden is very lightly grounded in the north, but approximately 40 m above floatation at its summit in the south (Figure 10b), where the ice base is about 150 m below sea level (Figure 10c). (Height above floatation is calculated using a 10 m firn air content derived from nearby surveyed floating ice and finding elevation relative to sea level using nearby surveyed open water.) Our ice loss estimate of 0.3 m/y would take 130 years to unground Bawden entirely, but this timescale is subject to great uncertainty, including the ice loss estimate itself, its applicability to this region, and its projection into the future. It is almost certainly an upper bound because lowering is rapid in the region (Figure 1) and Bawden would cease to provide a significant stabilising influence, and may even destabilise the ice front, long before the ice ungrounds through thinning. For example, Doake and Vaughan (1991) showed that ice rises acted as an ‘indenting wedge’ during the retreat of Wordie Ice Shelf. A large calving occurred south of Bawden between late December 2004 and early January 2005 and the ongoing thinning (Paolo et al., in press) and acceleration (Khazendar et al., 2011) in this region could indicate that ungrounding from Bawden is underway.

#### **5.2.6 Crevassing weakens shear zones**

Whatever its source, thinning and acceleration of LCIS could ultimately cause its demise by weakening the structural integrity of the ice shelf. LAIS and LBIS both accelerated before collapsing (Bindshadler et al., 1994; Rignot et al., 2004), and LBIS apparently collapsed after weakening of the shear zones between ice flow units (Khazendar et al., 2007; Vieli et al., 2007; Glasser and Scambos, 2008). The shear zones in LCIS are less strongly sheared (Khazendar et al., 2011) and hence more stable, but the ice is already quite damaged (Jansen et al., 2010; McGrath et al., 2012; Borstad et al., 2013). The uncertainties in this interaction are large and we are unable to assess a timescale for this risk.

## **6. Conclusions**

We analyse eight repeated radar surveys between 1998 and 2012 along a nearly meridional line that traverses the centre of Larsen C Ice Shelf (LCIS), applying a novel method to derive the separate ice and air losses along this line contributing to the known lowering of the ice shelf. The uncertainties are considerable, but our primary estimate is that the lowering ( $0.066 \pm 0.017$  m/y, or  $0.99 \pm 0.26$  m) is caused by both ice loss ( $0.28 \pm 0.18$  m/y, or  $4.2 \pm 2.7$  m) and firn air loss ( $0.037 \pm 0.026$  m/y, or  $0.56 \pm 0.39$  m). Though their effect on the surface lowering is approximately equal because the ice is floating, ice loss is an order of magnitude larger than air loss and so the results suggest that ice loss is the dominant change affecting LCIS. The derivation of these values allows us to speculate upon the possible sources of the changes, and their future implications.

The ice loss we observe could be explained by above-balance basal melting and/or ice divergence, and the air loss could be explained by below-balance accumulation and/or above-balance surface melting and/or compaction. We conclude that at least two different forcings caused the lowering of LCIS during our survey period. The surveys do not sample the most

rapid ice-shelf lowering in northern LCIS and it is likely that the balance of ice and air losses, and their driving mechanisms, varies for different regions and periods.

We conceive several interconnected mechanisms by which LCIS stability could be compromised. The two mechanisms that offer the earliest possibility of collapse are a flow perturbation arising from the ungrounding of LCIS from Bawden Ice Rise, and ice-front retreat past a ‘compressive arch’ in strain rates. Ice lowering is now focussed around Bawden Ice Rise (Paolo et al., in press), and the anomalous propagation of a rift in the south of LCIS may threaten the compressive arch (Jansen et al., 2015), suggesting that either mechanism could pose an imminent risk and both should be monitored closely.

## **Acknowledgements**

We gratefully acknowledge the vital contribution of many dedicated field-workers and support staff in enabling the radar and satellite campaigns underpinning this study. The imagery in Figure 10 was provided by the Polar Geospatial Center at the University of Minnesota under NSF OPP agreement ANT-1043681. Laurie Padman is gratefully acknowledged for providing the satellite radar altimetry data and much useful advice.

## **References**

Albrecht, T., and Levermann, A.: Spontaneous ice-front retreat caused by disintegration of adjacent ice shelf in Antarctica, *Earth and Planetary Science Letters*, 393, 26-30, DOI 10.1016/j.epsl.2014.02.034, 2014.

843 Arcone, S. A.: Airborne-radar stratigraphy and electrical structure of temperate firn: Bagley  
844 Ice Field, Alaska, USA, *Journal of Glaciology*, 48, 317-334, Doi  
845 10.3189/172756502781831412, 2002.

846 Banwell, A. F., MacAyeal, D., and Sergienko, O. V.: Breakup of the Larsen B Ice Shelf  
847 triggered by chain reaction drainage of supraglacial lakes, *Geophysical Research Letters*,  
848 40, 5872-5876, 10.1002/2013GL057694, 2013.

849 Barrand, N. E., Vaughan, D. G., Steiner, N., Tedesco, M., Munneke, P. K., van den Broeke,  
850 M. R., and Hosking, J. S.: Trends in Antarctic Peninsula surface melting conditions from  
851 observations and regional climate modeling, *Journal of Geophysical Research-Earth*  
852 *Surface*, 118, 315-330, 10.1029/2012jf002559, 2013.

853 Bathmann, U., Smetacek, V., de Baar, H., Fahrbach, E., and Krause, G.: The expeditions  
854 ANTARKTIS X/6-8 of the research vessel "POLARSTERN" in 1992/93, Alfred-  
855 Wegener-Institut, Bremerhaven, Germany, 236 pp, 1994.

856 Berthier, E., Scambos, T. A., and Shuman, C. A.: Mass loss of Larsen B tributary glaciers  
857 (Antarctic Peninsula) unabated since 2002, *Geophysical Research Letters*, 39, L13501,  
858 10.1029/2012gl051755, 2012.

859 Bindshadler, R. A., Fahnestock, M. A., Skvarca, P., and Scambos, T. A.: Surface-Velocity  
860 Field of the Northern Larsen Ice Shelf, *Antarctica, Annals of Glaciology*, Vol 20, 1994,  
861 20, 319-326, Doi 10.3189/172756494794587294, 1994.

862 Borstad, C. P., Rignot, E., Mouginot, J., and Schodlok, M. P.: Creep deformation and  
863 buttressing capacity of damaged ice shelves: theory and application to Larsen C ice shelf,  
864 *The Cryosphere*, 7, 1931-1947, 10.5194/tc-7-1931-2013, 2013.

865 Brisbourne, A. M., Smith, A. M., King, E. C., Nicholls, K. W., Holland, P. R., and Makinson,  
866 K.: Seabed topography beneath Larsen C Ice Shelf from seismic soundings, *The*  
867 *Cryosphere*, 8, 1-13, 10.5194/tc-8-1-2014, 2014.

868 Cook, A. J., and Vaughan, D. G.: Overview of areal changes of the ice shelves on the Antarctic  
869 Peninsula over the past 50 years, *The Cryosphere*, 4, 77-98, 10.5194/Tc-4-77-2010,  
870 2010.

871 Doake, C. S. M., and Vaughan, D. G.: Rapid Disintegration of the Wordie Ice Shelf in Response  
872 to Atmospheric Warming, *Nature*, 350, 328-330, 10.1038/350328a0, 1991.

873 Doake, C. S. M., Corr, H. F. J., Rott, H., Skvarca, P., and Young, N. W.: Breakup and  
874 conditions for stability of the northern Larsen Ice Shelf, Antarctica, *Nature*, 391, 778-  
875 780, Doi 10.1038/35832, 1998.

876 Domack, E., Duran, D., Leventer, A., Ishman, S., Doane, S., McCallum, S., Amblas, D., Ring,  
877 J., Gilbert, R., and Prentice, M.: Stability of the Larsen B ice shelf on the Antarctic  
878 Peninsula during the Holocene epoch, *Nature*, 436, 681-685, 10.1038/Nature03908,  
879 2005.

880 Dutrieux, P., Vaughan, D. G., Corr, H. F. J., Jenkins, A., Holland, P. R., Joughin, I., and  
881 Fleming, A. H.: Pine Island Glacier ice shelf melt distributed at kilometre scales, *The*  
882 *Cryosphere Discussions*, 2013.

883 Fricker, H. A., and Padman, L.: Thirty years of elevation change on Antarctic Peninsula ice  
884 shelves from multimission satellite radar altimetry, *Journal of Geophysical Research-*  
885 *Oceans*, 117, C02026, 10.1029/2011jc007126, 2012.

886 Glasser, N. F., and Scambos, T. A.: A structural glaciological analysis of the 2002 Larsen B  
887 ice-shelf collapse, *Journal of Glaciology*, 54, 3-16, Doi 10.3189/002214308784409017,  
888 2008.

889 Griggs, J. A., and Bamber, J. L.: Ice shelf thickness over Larsen C, Antarctica, derived from  
890 satellite altimetry, *Geophysical Research Letters*, 36, L19501, 10.1029/2009gl039527,  
891 2009.

892 Haug, T., Kaab, A., and Skvarca, P.: Monitoring ice shelf velocities from repeat MODIS and  
893 Landsat data - a method study on the Larsen C ice shelf, Antarctic Peninsula, and 10  
894 other ice shelves around Antarctica, *The Cryosphere*, 4, 161-178, 10.5194/tc-4-161-  
895 2010, 2010.

896 Hellmer, H. H., Huhn, O., Gomis, D., and Timmermann, R.: On the freshening of the  
897 northwestern Weddell Sea continental shelf, *Ocean Science*, 7, 305-316, 10.5194/os-7-  
898 305-2011, 2011.

899 Holland, P. R., Corr, H. F. J., Vaughan, D. G., Jenkins, A., and Skvarca, P.: Marine ice in  
900 Larsen Ice Shelf, *Geophysical Research Letters*, 36, L11604, 10.1029/2009gl038162,  
901 2009.

902 Holland, P. R., Jenkins, A., and Holland, D. M.: Ice and ocean processes in the Bellingshausen  
903 Sea, Antarctica, *Journal of Geophysical Research-Oceans*, 115, C05020,  
904 10.1029/2008jc005219, 2010.

905 Holland, P. R., Corr, H. F. J., Pritchard, H. D., Vaughan, D. G., Arthern, R. J., Jenkins, A., and  
906 Tedesco, M.: The air content of Larsen Ice Shelf, *Geophysical Research Letters*, 38,  
907 L10503, 10.1029/2011gl047245, 2011.

908 Jansen, D., Kulessa, B., Sammonds, P. R., Luckman, A., King, E. C., and Glasser, N. F.:  
909 Present stability of the Larsen C ice shelf, Antarctic Peninsula, *Journal of Glaciology*,  
910 56, 593-600, Doi 10.3189/002214310793146223, 2010.

911 Jansen, D., Luckman, A., Kulessa, B., Holland, P. R., and King, E. C.: Marine ice formation in  
912 a suture zone on the Larsen C Ice Shelf and its influence on ice shelf dynamics, *Journal*  
913 *of Geophysical Research-Earth Surface*, 118, 1628-1640, Doi 10.1002/Jgrf.20120, 2013.

914 Jansen, D., Luckman, A. J., Cook, A., Bevan, S., Kulessa, B., Hubbard, B., and Holland, P. R.:  
915 Newly developing rift in Larsen C Ice Shelf presents significant risk to stability, *The*  
916 *Cryosphere Discussions*, 9, 861-872, 10.5194/tcd-9-861-2015, 2015.

917 Jullion, L., Garabato, A. C. N., Meredith, M. P., Holland, P. R., Courtois, P., and King, B. A.:  
 918 Decadal Freshening of the Antarctic Bottom Water Exported from the Weddell Sea,  
 919 Journal of Climate, 26, 8111-8125, 10.1175/Jcli-D-12-00765.1, 2013.

920 Khazendar, A., Rignot, E., and Larour, E.: Larsen B Ice Shelf rheology preceding its  
 921 disintegration inferred by a control method, Geophysical Research Letters, 34, L19503,  
 922 10.1029/2007gl030980, 2007.

923 Khazendar, A., Rignot, E., and Larour, E.: Acceleration and spatial rheology of Larsen C Ice  
 924 Shelf, Antarctic Peninsula, Geophysical Research Letters, 38, L09502,  
 925 10.1029/2011gl046775, 2011.

926 Khazendar, A., Schodlok, M. P., Fenty, I., Ligtenberg, S. R. M., Rignot, E., and van den  
 927 Broeke, M. R.: Observed thinning of Totten Glacier is linked to coastal polynya  
 928 variability, Nature Communications, 4, 2857, 10.1038/Ncomms3857, 2013.

929 Khazendar, A., Borstad, C. P., Scheuchl, B., Rignot, E., and Seroussi, H.: The evolving  
 930 instability of the remnant Larsen B Ice Shelf and its tributary glaciers, Earth and  
 931 Planetary Science Letters, 10.1016/j.epsl.2015.03.014, in press.

932 King, M. A., and Padman, L.: Accuracy assessment of ocean tide models around Antarctica,  
 933 Geophysical Research Letters, 32, L23608, 10.1029/2005gl023901, 2005.

934 Kuipers Munneke, P., Picard, G., van den Broeke, M. R., Lenaerts, J. T. M., and van Meijgaard,  
 935 E.: Insignificant change in Antarctic snowmelt volume since 1979, Geophysical  
 936 Research Letters, 39, L01501, 10.1029/2011gl050207, 2012a.

937 Kuipers Munneke, P., van den Broeke, M. R., King, J. C., Gray, T., and Reijmer, C. H.: Near-  
 938 surface climate and surface energy budget of Larsen C ice shelf, Antarctic Peninsula, The  
 939 Cryosphere, 6, 353-363, 10.5194/tc-6-353-2012, 2012b.

940 Kuipers Munneke, P., Ligtenberg, S. R. M., van den Broeke, M. R., and Vaughan, D. G.: Firn  
 941 air depletion as a precursor of Antarctic ice-shelf collapse, *Journal of Glaciology*, 60,  
 942 205-214, Doi 10.3189/2014jog13j183, 2014.

943 Kulesa, B., Jansen, D., Luckman, A. J., King, E. C., and Sammonds, P. R.: Marine ice  
 944 regulates the future stability of a large Antarctic ice shelf, *Nature Communications*, 5,  
 945 3707, 10.1038/Ncomms4707, 2014.

946 Lenaerts, J. T. M., van den Broeke, M. R., van de Berg, W. J., van Meijgaard, E., and Munneke,  
 947 P. K.: A new, high-resolution surface mass balance map of Antarctica (1979-2010) based  
 948 on regional atmospheric climate modeling, *Geophysical Research Letters*, 39, L04501,  
 949 10.1029/2011gl050713, 2012.

950 Luckman, A., Elvidge, A., Jansen, D., Kulesa, B., Munneke, P. K., King, J. C., and Barrand,  
 951 N. E.: Surface melt and ponding on Larsen C Ice Shelf and the impact of foehn winds,  
 952 *Antarctic Science*, 26, 625-635, 2014.

953 Marshall, G. J., Orr, A., van Lipzig, N. P. M., and King, J. C.: The impact of a changing  
 954 Southern Hemisphere Annular Mode on Antarctic Peninsula summer temperatures,  
 955 *Journal of Climate*, 19, 5388-5404, 10.1175/Jcli3844.1, 2006.

956 McGrath, D., Steffen, K., Scambos, T., Rajaram, H., Casassa, G., and Lagos, J. L. R.: Basal  
 957 crevasses and associated surface crevassing on the Larsen C ice shelf, Antarctica, and  
 958 their role in ice-shelf instability, *Annals of Glaciology*, 53, 10-18,  
 959 10.3189/2012aog60a005, 2012.

960 McGrath, D., Steffen, K., Holland, P. R., Scambos, T., Rajaram, H., Abdalati, W., and Rignot,  
 961 E.: The structure and effect of suture zones in the Larsen C Ice Shelf, Antarctica, *Journal*  
 962 *of Geophysical Research-Earth Surface*, 119, 588-602, 10.1002/2013jf002935, 2014.



963 Morris, E. M., and Vaughan, D. G.: Spatial and temporal variation of surface temperature on  
 964 the Antarctic Peninsula and the limit of viability of ice shelves, *Antarctic Peninsula*  
 965 *Climate Variability: Historical and Paleoenvironmental Perspectives*, 79, 61-68, 2003.

966 Mueller, R. D., Padman, L., Dinniman, M. S., Erofeeva, S. Y., Fricker, H. A., and King, M.  
 967 A.: Impact of tide-topography interactions on basal melting of Larsen C Ice Shelf,  
 968 *Antarctica, Journal of Geophysical Research-Oceans*, 117, C05005,  
 969 10.1029/2011jc007263, 2012.

970 Nicholls, K. W., Pudsey, C. J., and Morris, P.: Summertime water masses off the northern  
 971 Larsen C Ice Shelf, *Antarctica, Geophysical Research Letters*, 31, L09309,  
 972 10.1029/2004gl019924, 2004.

973 Nicholls, K. W., Makinson, K., and Venables, E. J.: Ocean circulation beneath Larsen C Ice  
 974 Shelf, *Antarctica from in situ observations, Geophysical Research Letters*, 39, L19608,  
 975 10.1029/2012gl053187, 2012.

976 Padman, L., King, M., Goring, D., Corr, H., and Coleman, R.: Ice-shelf elevation changes due  
 977 to atmospheric pressure variations, *Journal of Glaciology*, 49, 521-526, Doi  
 978 10.3189/172756503781830386, 2003.

979 Padman, L., Costa, D. P., Dinniman, M. S., Fricker, H. A., Goebel, M. E., Huckstadt, L. A.,  
 980 Humbert, A., Joughin, I., Lenaerts, J. T. M., Ligtenberg, S. R. M., Scambos, T., and van  
 981 den Broeke, M. R.: Oceanic controls on the mass balance of Wilkins Ice Shelf,  
 982 *Antarctica, Journal of Geophysical Research-Oceans*, 117, C01010,  
 983 10.1029/2011jc007301, 2012.

984 Paolo, F. S., Fricker, H. A., and Padman, L.: Volume loss from Antarctic ice shelves is  
 985 accelerating, *Science*, in press.

986 Pritchard, H. D., Ligtenberg, S. R. M., Fricker, H. A., Vaughan, D. G., van den Broeke, M. R.,  
 987 and Padman, L.: Antarctic ice-sheet loss driven by basal melting of ice shelves, *Nature*,  
 988 484, 502-505, 10.1038/Nature10968, 2012.

989 Rignot, E., Casassa, G., Gogineni, P., Krabill, W., Rivera, A., and Thomas, R.: Accelerated ice  
 990 discharge from the Antarctic Peninsula following the collapse of Larsen B ice shelf,  
 991 *Geophysical Research Letters*, 31, L18401, 10.1029/2004gl020697, 2004.

992 Rignot, E., Mouginot, J., and Scheuchl, B.: Ice Flow of the Antarctic Ice Sheet, *Science*, 333,  
 993 1427-1430, 10.1126/science.1208336, 2011.

994 Rye, C. D., Naveira Garabato, A. C., Holland, P. R., Meredith, M. P., Nurser, A. J. G., Hughes,  
 995 C. W., Coward, A. C., and Webb, D. J.: Evidence of increased glacial melt in Antarctic  
 996 coastal sea level rise, *Nature Geoscience*, 7, 732-735, doi:10.1038/ngeo2230, 2014.

997 Scambos, T. A., Hulbe, C., and Fahnestock, M.: Climate-induced ice shelf disintegration in the  
 998 Antarctic Peninsula, *Antarctic Peninsula Climate Variability: Historical and*  
 999 *Paleoenvironmental Perspectives*, 79, 79-92, 2003.

1000 Scambos, T. A., Haran, T. M., Fahnestock, M. A., Painter, T. H., and Bohlander, J.: MODIS-  
 1001 based Mosaic of Antarctica (MOA) data sets: Continent-wide surface morphology and  
 1002 snow grain size, *Remote Sensing of Environment*, 111, 242-257, DOI  
 1003 10.1016/j.rse.2006.12.020, 2007.

1004 Shepherd, A., Wingham, D., Payne, T., and Skvarca, P.: Larsen Ice Shelf has progressively  
 1005 thinned, *Science*, 302, 856-859, 10.1126/science.1089768, 2003.

1006 Shepherd, A., Wingham, D., and Rignot, E.: Warm ocean is eroding West Antarctic Ice Sheet,  
 1007 *Geophysical Research Letters*, 31, L23402, 10.1029/2004gl021106, 2004.

1008 Shepherd, A., Wingham, D., Wallis, D., Giles, K., Laxon, S., and Sundal, A. V.: Recent loss  
 1009 of floating ice and the consequent sea level contribution, *Geophysical Research Letters*,  
 1010 37, L13503, 10.1029/2010gl042496, 2010.

1011 Shepherd, A., Ivins, E. R., Geruo, A., Barletta, V. R., Bentley, M. J., Bettadpur, S., Briggs, K.  
 1012 H., Bromwich, D. H., Forsberg, R., Galin, N., Horwath, M., Jacobs, S., Joughin, I., King,  
 1013 M. A., Lenaerts, J. T. M., Li, J. L., Ligtenberg, S. R. M., Luckman, A., Luthcke, S. B.,  
 1014 McMillan, M., Meister, R., Milne, G., Mouginot, J., Muir, A., Nicolas, J. P., Paden, J.,  
 1015 Payne, A. J., Pritchard, H., Rignot, E., Rott, H., Sorensen, L. S., Scambos, T. A.,  
 1016 Scheuchl, B., Schrama, E. J. O., Smith, B., Sundal, A. V., van Angelen, J. H., van de  
 1017 Berg, W. J., van den Broeke, M. R., Vaughan, D. G., Velicogna, I., Wahr, J., Whitehouse,  
 1018 P. L., Wingham, D. J., Yi, D. H., Young, D., and Zwally, H. J.: A Reconciled Estimate  
 1019 of Ice-Sheet Mass Balance, *Science*, 338, 1183-1189, 10.1126/science.1228102, 2012.  
 1020 Tedesco, M.: Assessment and development of snowmelt retrieval algorithms over Antarctica  
 1021 from K-band spaceborne brightness temperature (1979-2008), *Remote Sensing of*  
 1022 *Environment*, 113, 979-997, 10.1016/j.rse.2009.01.009, 2009.  
 1023 Trusel, L. D., Frey, K. E., Das, S. B., Munneke, P. K., and van den Broeke, M. R.: Satellite-  
 1024 based estimates of Antarctic surface meltwater fluxes, *Geophysical Research Letters*, 40,  
 1025 6148-6153, 10.1002/2013gl058138, 2013.  
 1026 Turner, J., Barrand, N. E., Bracegirdle, T. J., Convey, P., Hodgson, D. A., Jarvis, M., Jenkins,  
 1027 A., Marshall, G., Meredith, M. P., Roscoe, H., Shanklin, J., French, J., Goose, H.,  
 1028 Guglielmin, M., Gutt, J., Jacobs, S., Kennicutt, M. C., Masson-Delmotte, V., Mayewski,  
 1029 P., Navarro, F., Robinson, S., Scambos, T., Sparrow, M., Summerhayes, C., Speer, K.,  
 1030 and Klepikov, A.: Antarctic climate change and the environment: an update, *Polar*  
 1031 *Record*, 50, 237-259, Doi 10.1017/S0032247413000296, 2014.  
 1032 Valisuo, I., Vihma, T., and King, J. C.: Surface energy budget on Larsen and Wilkins ice  
 1033 shelves in the Antarctic Peninsula: results based on reanalyses in 1989--2010, *The*  
 1034 *Cryosphere*, 8, 1519-1538, 10.5194/tc-8-1519-2014, 2014.

1035 van den Broeke, M.: Strong surface melting preceded collapse of Antarctic Peninsula ice shelf,  
 1036 Geophysical Research Letters, 32, L12815, 10.1029/2005gl023247, 2005.  
 1037 van der Veen, C. J.: Fracture mechanics approach to penetration of surface crevasses on  
 1038 glaciers, Cold Regions Science and Technology, 27, 31-47, Doi 10.1016/S0165-  
 1039 232x(97)00022-0, 1998.  
 1040 Vieli, A., Payne, A. J., Shepherd, A., and Du, Z.: Causes of pre-collapse changes of the Larsen  
 1041 B ice shelf: Numerical modelling and assimilation of satellite observations, Earth and  
 1042 Planetary Science Letters, 259, 297-306, DOI 10.1016/j.epsl.2007.04.050, 2007.  
 1043 Wingham, D. J., Wallis, D. W., and Shepherd, A.: Spatial and temporal evolution of Pine Island  
 1044 Glacier thinning, 1995-2006, Geophysical Research Letters, 36, L17501,  
 1045 10.1029/2009gl039126, 2009.  
 1046  
 1047

Date	Origin	Platform	Ice-Sounding Radar	Ice Elevation
20-Feb-1998	BAS- Argentina	Twin otter	150 MHz <sup>a</sup>	radar altimeter <sup>a</sup>
26-Nov-2002	NASA-CECS	P-3	ICORDS2 140-160 MHz <sup>b</sup>	laser ATM <sup>c</sup>
29-Nov-2004	NASA-CECS	P-3	ACORDS 140-160 MHz <sup>b</sup>	laser ATM <sup>c</sup>
04-Nov-2009	NASA IceBridge	DC-8	MCoRDS 190-200 MHz* <sup>b,d</sup>	laser ATM <sup>c</sup>
19—21-Nov-2009	McGrath	Sledge	25 MHz <sup>e</sup>	GPS <sup>e</sup>
13-Nov-2010	NASA IceBridge	DC-8	MCoRDS 190-200 MHz <sup>b,d</sup>	laser ATM <sup>c</sup>
27-Jan-2011	BAS	Twin otter	150 MHz	radar altimeter
13—14-Dec-2012	Brisbourne	Sledge	50 MHz	GPS

<sup>a</sup> Holland et al. (2009);

<sup>b</sup> <https://data.cresis.ku.edu/#RDS>;

<sup>c</sup> <http://nsidc.org/data/ilatm2>;

<sup>d</sup> <http://nsidc.org/data/irmcr2.html>;

<sup>e</sup> McGrath et al. (2014).

\*Data neglected due to transmit/receive switch problem; see section 2.3.

**Table 1:** Details of the radio-echo sounding and altimeter surveys used in this analysis.

case	elevation (m/y)	TWTT (m ice year <sup>-1</sup> )	ice (m/y)	air (m/y)
Reference	-0.0660	-0.296	-0.274	-0.0367
Using satellite altimetry	-0.0616	-0.296	-0.277	-0.0320
BAS only <sup>a</sup>	-0.0752	-0.264	-0.235	-0.0500
NASA only <sup>b</sup>	-0.0303	<b>0.087</b>	<b>0.110</b>	-0.0421
Without 1998	-0.0311	<b>-0.041</b>	<b>-0.025</b>	-0.0285
Without 2002	-0.0694	-0.389	-0.371	-0.0297
Without 2004	-0.0713	-0.281	-0.256	-0.0439
Without 2009 MG	-0.0654	-0.195	<b>-0.168</b>	-0.0474
Without 2010	-0.0648	-0.351	-0.334	-0.0290
Without 2011	-0.0695	-0.394	-0.377	-0.0292
With 2009 IB TWTT	-0.0660	-0.482	-0.471	<b>-0.0155</b>
With 2012	-0.0670	-0.212	-0.185	-0.0473
Uncertainty (see text)	0.017	0.17	0.18	0.026

<sup>a</sup>All 1998 and 2011 data

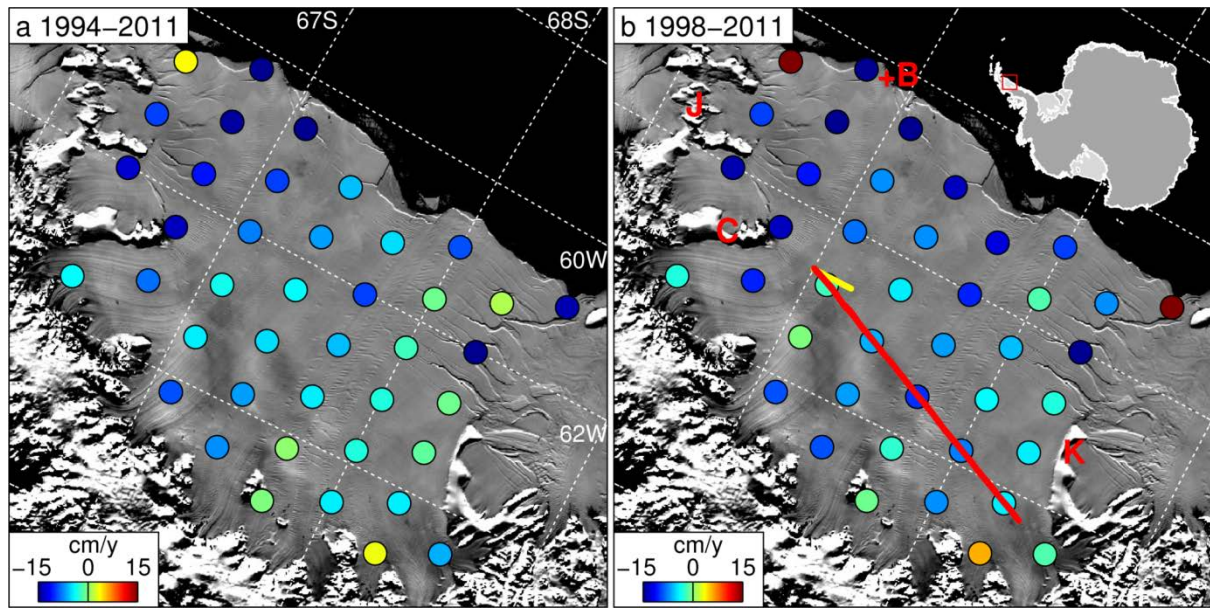
<sup>b</sup>All 2002, 2004, 2010 data and elevation for IceBridge 2009.

**Table 2:** Elevation and TWTT trends and their derived ice and air trends from calculations performed using different combinations of data. TWTT trends are expressed as solid-ice thickness equivalent. Trends in bold are smaller than the derived uncertainty (see main text).

survey	elevation differences from 2004 (m)				TWTT differences from 2004 (m ice)			
	count	mean	stddev	stderr	count	mean	stddev	stderr
1998	2213	0.993	1.365	0.029	1382	2.320	7.507	0.202
2002	5092	0.376	1.329	0.019	952	-3.384	9.365	0.304
2004	6097	0	0	0	18385	0	0	0
2009 MG	8731	-0.013	1.726	0.019	4385	-5.441	9.501	0.144
2009 IB*	4779	0.215	1.139	0.017	4444	-11.62	11.91	0.179
2010	4461	-0.088	1.836	0.028	5317	-1.784	9.847	0.135
2011	12126	0.020	1.573	0.014	9190	-1.097	9.802	0.102
2012	303	-0.225	2.401	0.138	187	-0.976	9.651	0.706

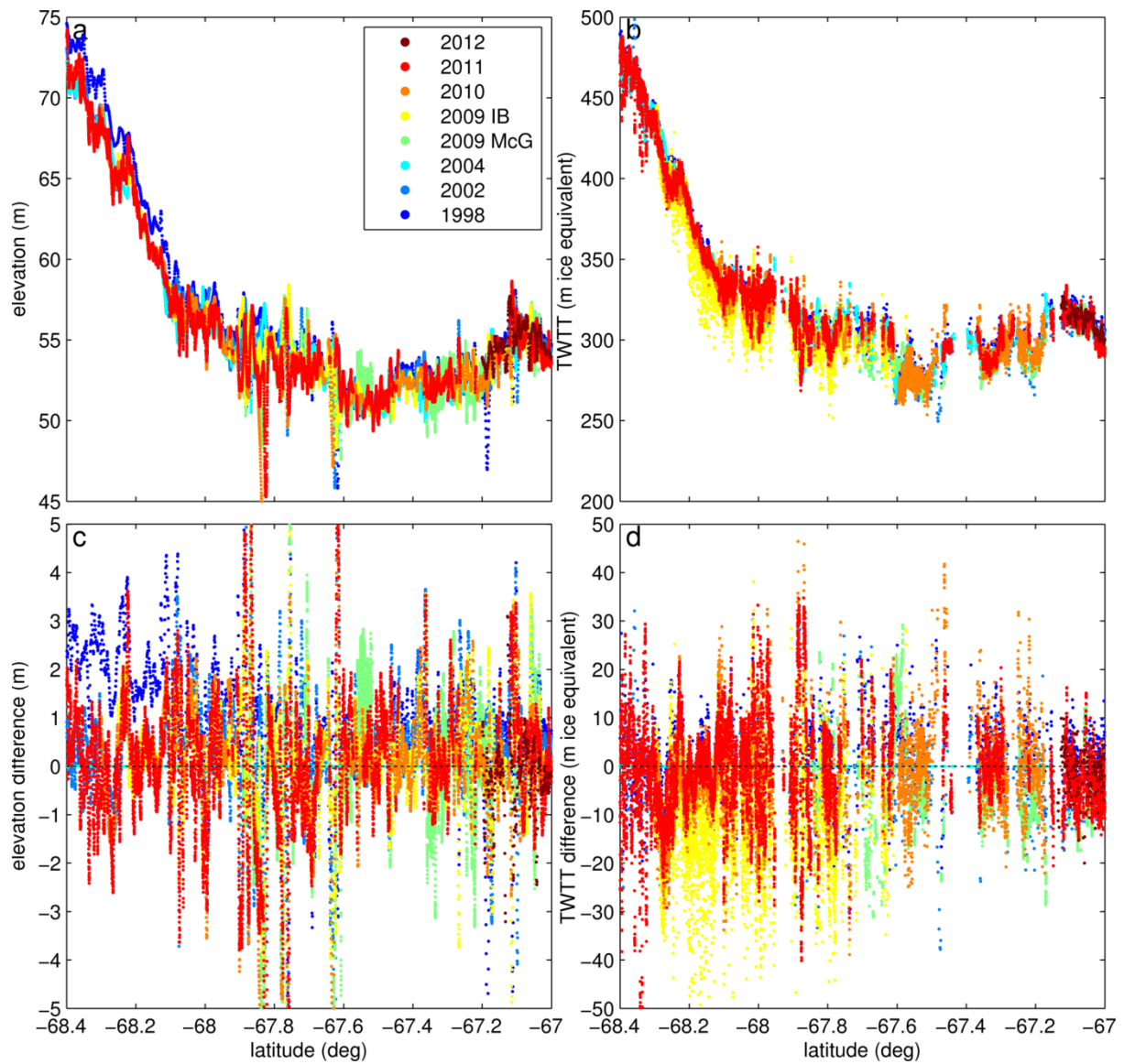
\*TWTT data neglected due to transmit/receive switch problem; see section 2.3.

**Table 3:** Statistics of the differences between all data from each survey and their nearest 2004 analogue, as shown in Figure 4. TWTT is expressed as solid-ice thickness equivalent.

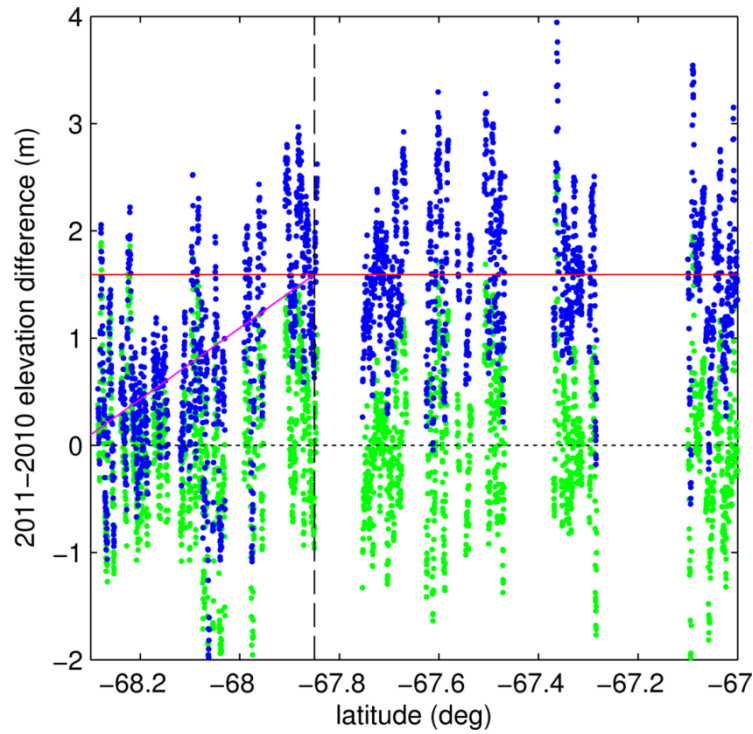


**Figure 1:** MODIS Mosaic of Antarctica imagery of LCIS (Scambos et al., 2007) showing the location of satellite radar altimeter crossovers and estimated surface lowering rates (updated from Fricker and Padman, 2012, as described in section 2.5) for two periods. a) 1994—2011, the full period for which ERS-1/2 and Envisat data are reliable; b) 1998—2011, the period for which we have radar surveys. The main survey line is shown in red, with the 2012 survey shown in yellow. Panel b shows geographical features referred to in the text: B: Bawden Ice Rise; C: Churchill Peninsula; J: Jason Peninsula; K: Kenyon Peninsula.

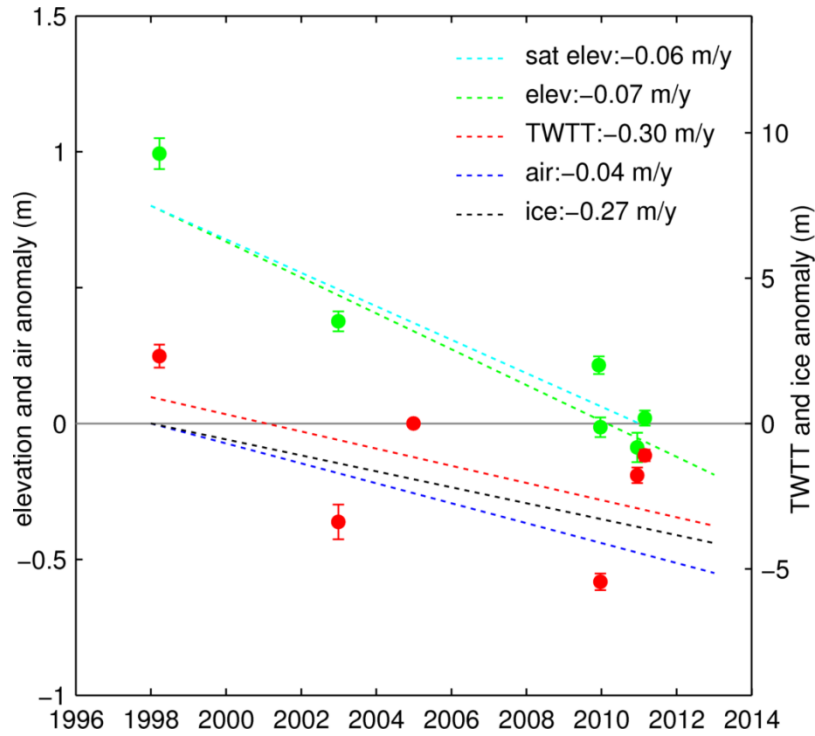




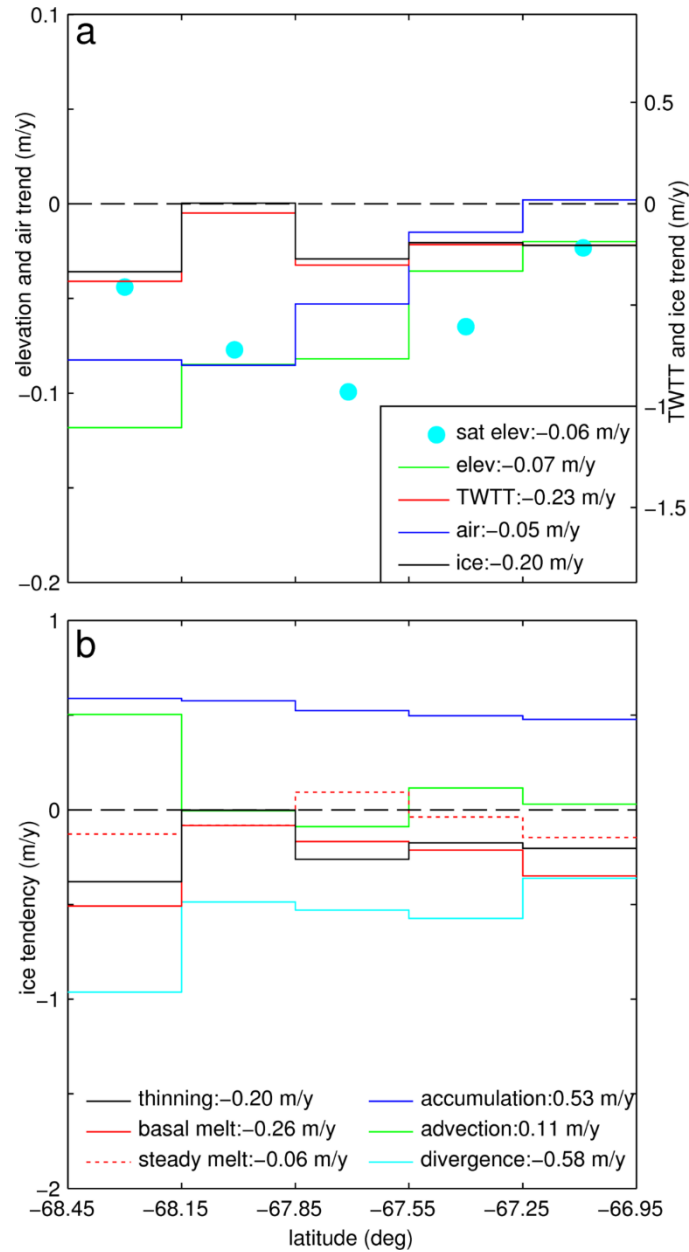
**Figure 2:** Processed data from the eight surveys, from which the air and ice thickness changes are derived. a) Surface elevation relative to WGS84 ellipsoid. b) Radar two-way travel time (TWTT), expressed as an equivalent thickness of solid ice. c) Difference between each elevation observation and nearest 2004 analogue. d) Difference between each TWTT observation and nearest 2004 analogue.



**Figure 3:** Correction of the elevation data in the 2011 BAS airborne survey. Blue dots show the differences between uncorrected BAS radar altimetry elevations on 27 January 2011 and IceBridge laser altimetry elevations on 13 November 2010 (using the sign convention 2011 minus 2010). The 2011 survey data need to be calibrated and also have radar firn penetration removed. Assuming negligible elevation change over the ~10 weeks between surveys, the 2011 data are first calibrated by subtracting everywhere an offset of 1.59 m (red line; the mean difference from 2010 for all data north of 67.85 °S). After this calibration, the 2011 data are progressively lower than 2010 south of 67.85 °S, which is attributed to radar penetration of the firn (Holland et al., 2011). In this region we add an additional penetration correction equal to the difference between the red and magenta lines. This correction is also applied to the 1998 BAS radar altimeter data. Green dots show the difference between the corrected 2011 data and the 2010 data.

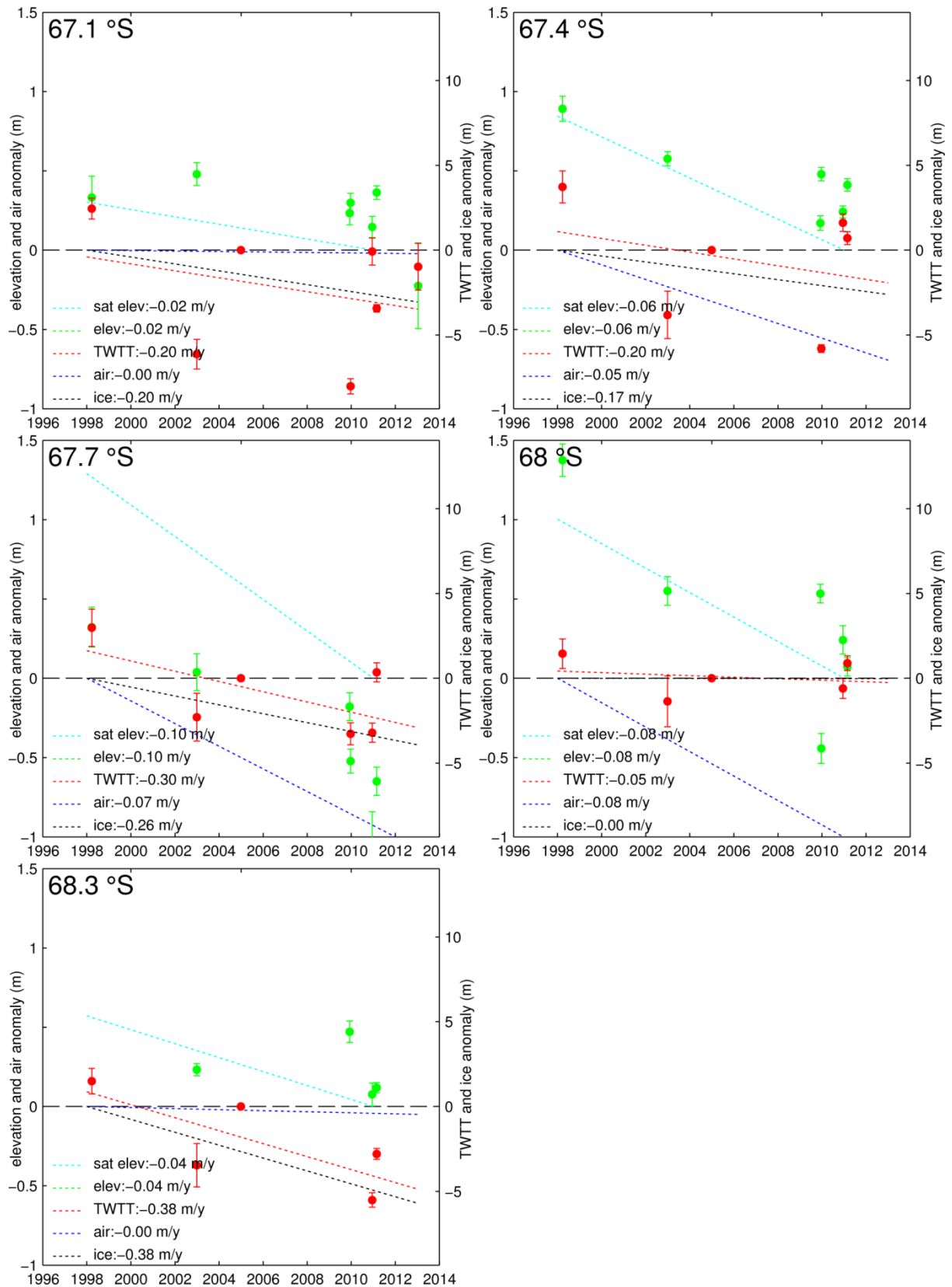


**Figure 4:** Inter-survey differences in elevation, TWTT, ice and air. Mean differences between each survey and 2004 for elevation are shown in green and for radar two-way travel time (TWTT; ice equivalent) in red. Error bars represent 95% confidence intervals of the population of differences from 2004, and dashed lines represent linear trend lines. The 2004 elevation and TWTT are both shown as zero, with zero error. The elevation trend derived from satellite radar altimetry is also shown in cyan. Trends in ice thickness (black) and air thickness (blue) are derived directly from trends in TWTT and elevation, revealing that LCIS has lost both ice and air over the period surveyed. Elevation and air thickness use the left axis, while TWTT and ice thickness are plotted with absolute values on the right axis and equivalent surface elevation on the left axis.



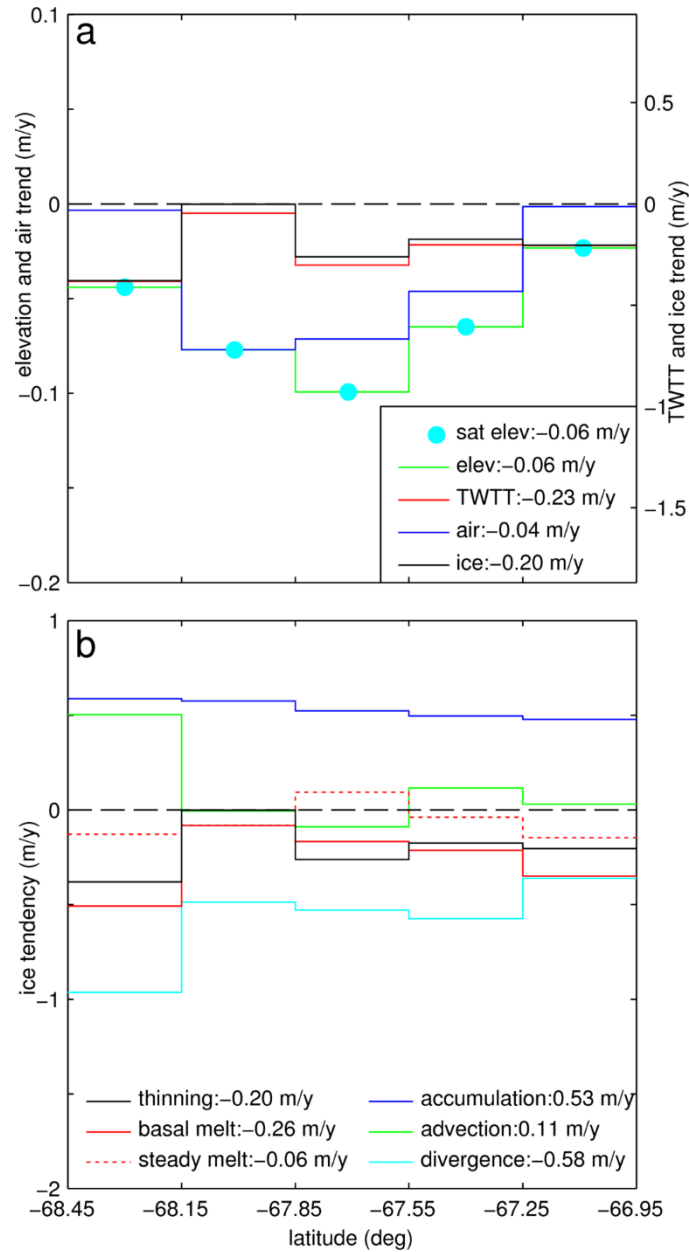
**Figure 5:** Spatial variation in derived quantities along the survey line within latitude bins centred upon the locations of the satellite cross-over points (see Figure 1b). a) Trends in elevation (green), TWTT (red; ice equivalent), and air (black) and ice (blue) thickness, showing significant ice and air loss. Elevation trends derived from satellite radar altimetry at the crossovers are cyan. Elevation and air thickness use the left axis, while TWTT and ice thickness are plotted with absolute values on the right axis and equivalent surface elevation on the left axis. b) Spatial variation in ice mass budget. Divergence balances accumulation, and ice

1112 thinning is similar to unbalanced basal melting. Values in the legends represent means over all  
1113 bins.



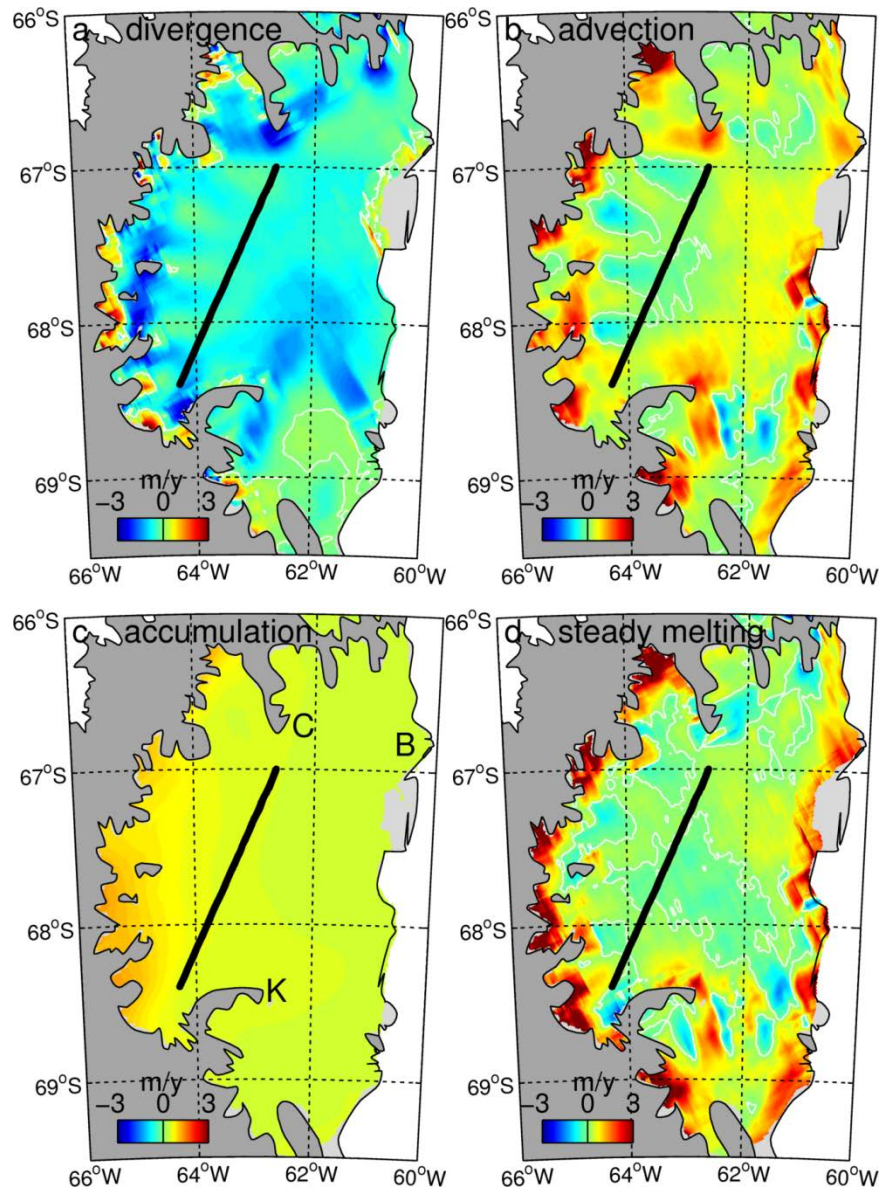
**Figure 6:** Data and trends for the five latitude bins defined by the satellite altimetry crossovers, labelled with the latitude of the accompanying crossover. Data points show the mean and 95%

1117 confidence intervals of the differences between each survey and the 2004 baseline for surface  
1118 elevation (green) and TWTT (red, expressed as solid-ice equivalent). The satellite-altimeter  
1119 derived elevation trend for the crossover at the centre of each bin is also shown (cyan).  
1120 Surveyed trends in elevation and TWTT are converted to trends in ice (black) and air (blue)  
1121 thickness. Elevation and air thickness are plotted on the left-hand axis, while TWTT and ice  
1122 thickness are plotted such that the right-hand axis shows absolute values and the left-hand axis  
1123 shows the equivalent surface elevation.

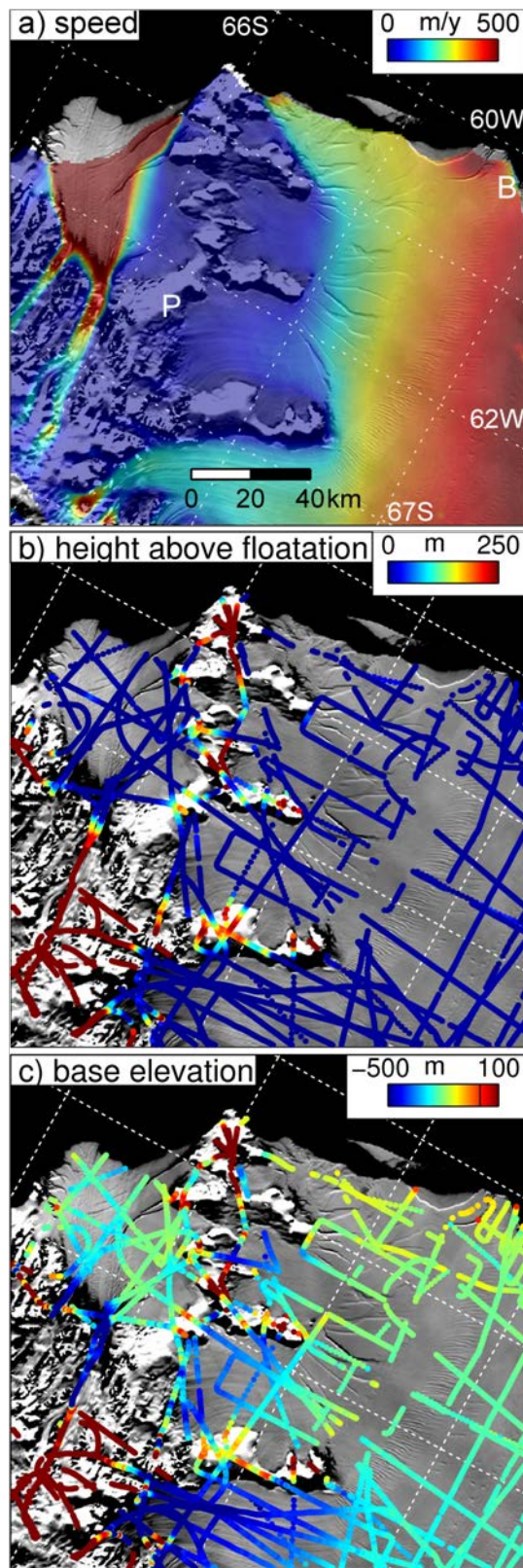


**Figure 7:** Version of Figure 5 in which the binned survey elevation trends are replaced by satellite crossover elevation trends. a) Spatial variation of trends in elevation (green), TWTT (red, ice equivalent), and air (black) and ice (blue) thickness. Satellite crossover trends are cyan. Elevation and air thickness use the left axis, while TWTT and ice thickness are plotted with absolute values on the right axis and equivalent surface elevation on the left axis. b) Meridional variation in ice mass budget.





**Figure 8:** Fields of derived values for the terms in the ice-only mass balance (positive implies melting). a) ice divergence ( $-I\nabla \cdot \mathbf{u}$ ); b) ice advection ( $-\mathbf{u} \cdot \nabla I$ ); c) ice surface accumulation; d) derived steady-state basal melting. Panel c shows geographical features referred to in the text: B: Bawden Ice Rise; C: Churchill Peninsula; K: Kenyon Peninsula.

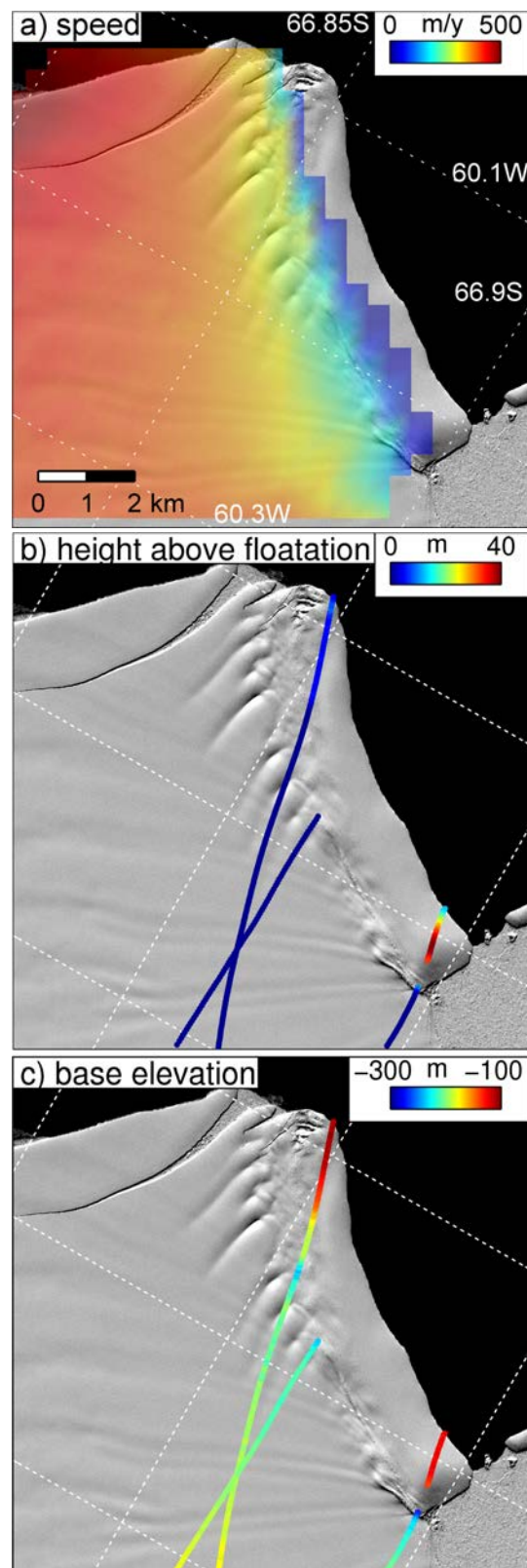


1136

1137 **Figure 9:** Northern LCIS and Jason Peninsula, showing various quantities overlain on MODIS

1138 Mosaic of Antarctica (Scambos et al., 2007). a) ice flow speed (Rignot et al., 2011); b) height

- 1139 of ice surface above hydrostatic floatation; c) elevation of ice base relative to sea level. Bawden
- 1140 Ice Rise is labelled B and Phillipi Rise is labelled P.



1141

1142 **Figure 10:** High-resolution WorldView2 satellite imagery of Bawden Ice Rise acquired 15<sup>th</sup>

1143 October 2012 (copyright Digital Globe) with various quantities overlain. a) ice flow speed

1144 (Rignot et al., 2011); b) height of ice surface above hydrostatic floatation; c) elevation of ice  
1145 base relative to sea level.