

This discussion paper is/has been under review for the journal The Cryosphere (TC).
Please refer to the corresponding final paper in TC if available.

Interaction of katabatic wind and local surface mass balance at Scharffenbergbotnen Blue Ice Area, Antarctica

T. Zwinger^{1,2}, T. Malm³, M. Schäfer⁴, R. Stenberg³, and J. C. Moore^{2,4}

¹CSC – IT Center for Science Ltd., P.O. Box 405, 02101 Espoo, Finland

²College of Global Change and Earth System Science, Beijing Normal University, 19 Xijiekou Wai Street, Beijing, 100875 China

³Aalto University, Institute of Mathematics, P.O. Box 1100, 02015 HUT, Espoo, Finland

⁴Arctic Centre, University of Lapland, P.O. Box 122, 96101 Rovaniemi, Finland

Received: 4 March 2015 – Accepted: 11 March 2015 – Published: 1 April 2015

Correspondence to: J. C. Moore (john.moore.bnu@gmail.com)

Published by Copernicus Publications on behalf of the European Geosciences Union.

Title Page

Abstract

Introduction

Conclusions

References

Tables

Figures



Back

Close

Full Screen / Esc

Printer-friendly Version

Interactive Discussion



Abstract

We model the wind causing the formation of a blue ice area in Scharffenbergbotnen valley, Antarctica, using the finite element code Elmer. The high resolution numerical simulations of the local wind flow from katabatic wind fronts show highly spatially variable wind impact patterns and good congruence between places of enhanced wind-impact and the blue ice area. The results were fortuitously confirmed by the destruction of a field camp located in a high wind speed area and its subsequent redistribution to low velocity areas. In addition we perform wind simulations on an altered glacier geometry that resembles the thicker ice cover at the Late Glacial Maximum (LGM). These simulations indicate that the pronounced spatial wind-impact patterns depend on present day geometry and did not occur during the LGM. This leads to the conclusion that the formation of the blue ice area that is situated more inside the valley of Scharffenbergbotnen started only after the lowering of the ice surface, later than the LGM. Experiments with smoothed surface topography suggest that detailed positions of the high wind regions and hence individual blue ice fields, may have varied as the ice sheet lowered. The experiments and the field observations are consistent with localized violent katabatic events, rather than synoptic scale storms, playing the dominant role in the formation and maintenance of this, and perhaps many blue ice areas.

1 Introduction

A Blue Ice Area (BIA) is a snow-free ablation zone, on the Antarctic Ice Sheet where the ice surface is clear of snow, and therefore reflects a blueish color. These areas cover about 1 % of the entire surface area of Antarctica (Sinisalo and Moore, 2010). At relatively low elevation BIAs, summer temperatures are sufficient to allow surface and internal melting, and are of great practical importance for water supply to field stations, and as landing strips for wheeled aircraft. The lower surface roughness of ice compared with snow allows winds to preferentially remove any freshly fallen snow from them. At

Wind at Scharffenbergbotnen Blue Ice Areas

T. Zwinger et al.

Title Page

Abstract

Introduction

Conclusions

References

Tables

Figures



Back

Close

Full Screen / Esc

Printer-friendly Version

Interactive Discussion



higher altitudes, typically above 1000 m a.s.l. (Bintanja, 1999), melt does not occur even in summertime, and BIAs are then maintained and created simply by the occurrence of strong winds over them. It is one of these high elevation BIAs that is object of study in this paper. The snow–ice boundaries of BIAs appear to be remarkably stable on multi-year timescales (Giaever, 1969), which indicates that repeating meteorological conditions have to play a role in maintaining them (Bintanja, 1999; Sinisalo et al., 2004; Sinisalo, 2007). Old ice can often be found at the surface of some BIAs. If a good understanding of the ice dynamics were available, then the easily accessible ancient ice would be of great interest for paleoclimatic studies (Bintanja, 1999; Sinisalo et al., 2004; Moore et al., 2006; Sinisalo and Moore, 2010).

BIAs are hence typically located in areas where the local wind speed is occasionally high – either by association with mountain turbulence or in regions of strong katabatic wind flow. Here we investigate to what extent the surrounding terrain contributes to a local increase in wind-impact velocity above the well studied BIAs in the inner region of Scharffenbergbotnen (SBB) valley, Dronning Maud Land, Antarctica (located approximately at 74.56° S, 11.05° W) and compare the wind distribution patterns with the equilibrium surface mass balance distribution computed by Zwinger et al. (2014). SBB is located about 300 km inland, in the Heimefront mountain range of Dronning Maud Land (see Fig. 1). The dominant easterly wind direction can be clearly seen from the prominent wind drift tails behind exposed rocks. A geomorphological map of the SBB valley is presented in Fig. 2. The map shows three distinguishable BIAs, one on the north-western side at the entrance of the valley, and two inside the SBB valley, separated by a moraine. The two BIAs inside the valley have been the subject of various studies of meteorological (Bintanja and Reijmer, 2001), glaciological (Sinisalo and Moore, 2010) and geomorphological nature (Hättestrand and Johansen, 2005).

Numerous previous studies of winds over Antarctica have adopted simplified equations and worked on large spatial domains, ignoring small-scale details and only resolving large-scale flow patterns. A hydrostatic, three-dimensional primitive equation model with a resolution of 20 km was presented by Bromwich et al. (1994) for simula-

Wind at Scharffenbergbotnen Blue Ice Areas

T. Zwinger et al.

Title Page

Abstract

Introduction

Conclusions

References

Tables

Figures



Back

Close

Full Screen / Esc

Printer-friendly Version

Interactive Discussion



tions on winter katabatic winds crossing the Siple coast and the Ross ice shelf. Gallée et al. (1994) proposed a similar model with the highest resolution being 5 km. A relatively simple simulation of snow flow affected by katabatic winds was presented by Gallée (1998); with a horizontal resolution of 40 km, the model domain covered the entire Antarctic ice-sheet. The study by Yu et al. (2005) on katabatic jumps, where an open channel katabatic flow rapidly transforms to a calm flow was implemented on a uniform grid spacing of 3.5 km, 700 and 175 m along with an assumption of a two-dimensional katabatic flow and a rather smooth geometry. Skillingstad (2003) in contrast used a Large Eddy Simulation (LES) to investigate the small-scale dynamics of gravity-driven incompressible flows on a simple linearly decreasing smooth slope with a resolution of approximately 0.75 m.

We deploy Variational Multiscale (VMS) stabilization with the Finite Element (FE) method to study the local wind fields above the valley at SBB. To our knowledge this is the first high resolution Navier–Stokes governed simulation of local wind fields above BIAs. The domain size used for our modelling of the complex terrain in SBB is 10^3 times larger than in Skillingstad (2003), and our minimal horizontal resolution is $h_{\min} \approx 50$ m.

In Sect. 2 we present the governing equations including a brief introduction to the VMS turbulence model in Sect. 2.1. This will be followed in Sect. 3 with a discussion of the specific model setup for the simulations of SBB area. Section 4 presents and discusses the results obtained for different flow profiles as well as altered geometries and Sect. 5 the comparison with a documented katabatic event. The conclusions from these results are presented in Sect. 6.

2 Governing equations for wind flow simulations

The flow is assumed to be described by the incompressible Navier–Stokes equations

$$\rho \left(\frac{\partial \mathbf{u}}{\partial t} + (\mathbf{u} \cdot \nabla) \mathbf{u} \right) + \nabla p - 2\mu \mathbf{div}(\bar{\bar{\epsilon}}(\mathbf{u})) = \rho \mathbf{f},$$

$$\nabla \cdot \mathbf{u} = 0, \tag{1}$$

where ρ stands for the constant density of the air, \mathbf{f} for the gravitational body force, \mathbf{u} denotes the velocity vector, p the isotropic pressure. μ is the dynamic viscosity and $\bar{\bar{\epsilon}}$ is the symmetric strain rate tensor, given by

$$\bar{\bar{\epsilon}}(\mathbf{u}) = \frac{1}{2} \left(\nabla \mathbf{u} + (\nabla \mathbf{u})^T \right). \tag{2}$$

The set of Eqs. (1) and (2) is defined in the domain $\Omega \subset \mathbb{R}^3$ for the time-interval $t \in (0, t_{\text{end}})$.

We are well aware that katabatic winds are driven by the density differences between colder and warmer air and hence a detailed study would deserve a buoyant (hence compressible or at least Boussinesq-approximated) flow with its density coupled to the temperature field. Nevertheless, our study will show that over the last few hundred metres of the katabatic flow into the valley the inertia of the incoming jet is sufficient to produce wind-impact patterns that well match the observed locations of the bare ice fields in the SBB valley and hence the assumption of incompressibility is appropriate for the BIA study.

2.1 Variational Multiscale method

The modelling of turbulent flows is one of the most challenging areas in Mathematics and Computational Fluid Dynamics (CFD). Numerous ad hoc models to treat the turbulent nature of the resulting flow numerically have been proposed. The main idea of using these approaches is to dramatically reduce the number of nodes needed for solving turbulent CFD problems (Rautaeimo, 2001).

Wind at Scharffenbergbotnen Blue Ice Areas

T. Zwinger et al.

Title Page

Abstract

Introduction

Conclusions

References

Tables

Figures

◀

▶

◀

▶

Back

Close

Full Screen / Esc

Printer-friendly Version

Interactive Discussion



We use the implicit Euler method for time discretization. In space, continuous piecewise isoparametric hexahedral elements are used for both the velocity and pressure. The discretization in space is a weighted least squares stabilized Galerkin method, also known under the name Variational Multi Scale (VMS) method (Hughes, 1995; Hoffman and Johnson, 2006, 2007; Bazilevs et al., 2008). The VMS-method is an alternative, yet similar method to Large Eddy Simulation (LES). The main difference between LES and VMS is that the latter projects the scales into the function spaces rather than filtering them by spatial averaging. Thus the VMS-method avoids the problems of spatial filtering, spatial differentiation in bounded domains as well as with non-constant filter widths, and the issue of choosing the correct boundary conditions for spatially averaging at large scales (John et al., 2010).

The finite element spaces we denote by

$$\mathcal{V}_h^v \subset \mathcal{V}^v, \quad \mathcal{V}_h^0 \subset \mathcal{V}^0 \quad \text{and} \quad \mathcal{W}_h \subset \mathcal{W}. \quad (3)$$

Given the initial value \mathbf{u}_h^0 , the solution (\mathbf{u}_h^n, p_h^n) for the time step $t_n = n\Delta t$, $n = 1, 2, \dots, N$, is obtained from

$$\begin{aligned} & \rho \left(\frac{\mathbf{u}_h^n - \mathbf{u}_h^{n-1}}{\Delta t} + (\mathbf{u}_h^n \cdot \nabla) \mathbf{u}_h^n, \mathbf{v} \right) + \left(\nabla p_h^n, \mathbf{v} \right) - 2\mu \left(\bar{\bar{\epsilon}}(\mathbf{u}_h^n), \bar{\bar{\epsilon}}(\mathbf{v}) \right) \\ & + \sum_{\mathcal{E}} \delta_{\mathcal{E}} \left(\rho (\mathbf{u}_h^n \cdot \nabla) \mathbf{u}_h^n + \nabla p_h^n, (\mathbf{u}_h^n \cdot \nabla) \mathbf{v} + \nabla q \right)_{\mathcal{E}} \\ & = \left(\rho \mathbf{f}^n, \mathbf{v} \right) + \sum_{\mathcal{E}} \delta_{\mathcal{E}} \left(\rho \mathbf{f}^n, (\mathbf{u}_h^n \cdot \nabla) \mathbf{v} + \nabla q \right)_{\mathcal{E}} \quad \forall \mathbf{v} \in \mathcal{V}_h^0, \quad \forall q \in \mathcal{W}_h, \end{aligned} \quad (4)$$

where (\cdot, \cdot) denotes the $L^2(\Omega)$ -inner product and $(\cdot, \cdot)_{\mathcal{E}}$ denotes the $L^2(\mathcal{E})$ -inner product for the element \mathcal{E} of the mesh. A constant timestep-size of $\Delta t = 0.1$ s is applied in all simulations. The stabilization parameter is given by

$$\delta_{\mathcal{E}} = \left(\frac{1}{\Delta t} + \frac{|\mathbf{u}^n|}{h_{\mathcal{E}}} \right)^{-1}, \quad (5)$$

Wind at Scharffenbergbotnen Blue Ice Areas

T. Zwinger et al.

[Title Page](#)[Abstract](#)[Introduction](#)[Conclusions](#)[References](#)[Tables](#)[Figures](#)[Back](#)[Close](#)[Full Screen / Esc](#)[Printer-friendly Version](#)[Interactive Discussion](#)

where $h_{\mathcal{E}}$ represents the size of element \mathcal{E} . Detailed literature on applications and the theory behind the VMS method can be found in Hughes (1995); Gravemeier (2005); Gravemeier et al. (2006); Bazilevs et al. (2008). For each time step the nonlinear system (4) is solved by a Picard iteration. The linearized system is solved using the generalized minimal residual (GMRES) Krylov-subspace method (Kelley, 1995) with an incomplete LU factorization of the system matrix deployed as a preconditioning step.

3 Simulation setup for Scharffenbergbotnen valley

The VMS method used for turbulent computations is implemented within the open source multi-physics FE-code Elmer (<http://www.csc.fi/elmer>). Due to a large domain size combined with a turbulent flow the problem has to be solved using High Performance Computing (HPC) on a parallel Linux cluster.

The mesh, i.e. the discretization of the domain Ω , used for computations of the wind flow inside the valley is constructed from the Digital Elevation Model (DEM) data of SBB, which has a resolution of 100 m and is based on airborne surveys in 1985/86 over the whole Heimefrontfjella area (copyright of Bundesamt für Kartographie und Geodäsie, Frankfurt am Main, <http://www.bkg.bund.de>). This is achieved by extruding a horizontal footprint mesh, which was created with the open source mesh generator Gmsh (Geuzaine and Remacle, 2009). A horizontal resolution of 50 m is applied inside the valley where the BIAs are located, while a characteristic mesh length of 200 m is chosen for the parts of the domain closer to the side boundaries. Thus a sufficiently fine mesh in the areas of most interest can be achieved while avoiding excessive computations. As shown in Fig. 3, this footprint mesh is vertically extruded into 30 terrain-following layers up to an elevation of 3000 m. The first 10 mesh-layers are concentrated into the lowest 10 % of the height, applying an exponential refinement of the layers towards the lower surface. Thereby a high vertical resolution (1–2 m) at the valley bottom to account for the turbulent boundary layer close to the surface is achieved. This results in a mesh with 373 620 nodes from which 358 382 (mainly hexahedral) linear bulk

elements are constructed, which are bounded by 30 516 (mainly quadrilateral) linear boundary elements. This mesh is split into 64 partitions for parallel computation.

Our simulation setups resemble those from Malm (2012). However, while Malm deployed initial conditions utilizing a background wind field statistically obtained from ECWMF re-analysis data, we let the katabatic wind front impact into a region of stagnant air. No significant differences in wind-impact patterns between these background fields were found.

In addition to using present day topography, two alternative meshes were constructed: a smoothed version of the initial DEM; and one based on geomorphological evidence of the ice thickness at Late Glacial maximum (LGM) – that is a DEM with 200 m thicker ice inside and 100 m outside the valley (Näslund et al., 2000; Hättestrand and Johansen, 2005). To approximate thicker glacial ice conditions around the valley, all non-glaciated peaks outside the valley were also smoothed. The smoothing in both variants of the original DEM was achieved by replacing the elevation value of each point in the smoothed DEM by the average of all surrounding points contained within a circle of 250 m radius in the original DEM, similar to a simple moving average algorithm.

We also allow for variation in the vertical velocity profile of the katabatic wave front as it enters the eastern border of the domain. The reference simulation profile for the normal inwards pointing component of the velocity, we denote as *nose*-shaped, which is defined by with respect to the height above ground, \mathcal{H} , as

$$u_{\text{nose}}(\mathcal{H}) = 2\mathcal{H} - 4 \cdot 10^{-2} \mathcal{H}^2 + 2 \cdot 10^{-4} \mathcal{H}^3. \quad (6)$$

The alternative is a *parabolic* profile (the same as used by Malm, 2012)

$$u_{\text{para}}(\mathcal{H}) = 1.2\mathcal{H} - 1.2 \cdot 10^{-2} \mathcal{H}^2. \quad (7)$$

Both profiles reach from ground level to 100 m above ground. The third profile investigated is a stretched version of Eq. (6), *noseL*, which extends to 200 m above ground

$$u_{\text{noseL}}(\mathcal{H}) = 1.0125\mathcal{H} - 1.0125 \cdot 10^{-2} \mathcal{H}^2 + 2.5313 \cdot 10^{-5} \mathcal{H}^3. \quad (8)$$

**Wind at
Scharffenbergbotnen
Blue Ice Areas**

T. Zwinger et al.

Title Page	
Abstract	Introduction
Conclusions	References
Tables	Figures
◀	▶
◀	▶
Back	Close
Full Screen / Esc	
Printer-friendly Version	
Interactive Discussion	



All three profiles are shown as a function of \mathcal{H} in Fig. 4. To avoid issues with backflow at the lateral boundaries, the inflow profile is damped to zero 1250 m from the lateral (north and south) boundaries. Instabilities imposed by the pressure field at the start of the simulation were suppressed by allowing 100 s for the inflow profile to ramp up from resting air to peak values. On the southern and northern boundaries, which are aligned with the main flow direction, the normal component of the velocity is kept at zero. The same condition applies to the boundary with the upper atmosphere, where we constrain the vertical (z aligned) velocity component. The set of boundary conditions is completed at the valley surface, $b(x, y)$, where we impose a no-slip condition

$$\mathbf{u}|_{z=b} = \mathbf{0}, \quad (9)$$

and a further free outflow condition imposed on the western confinement. In order to avoid instabilities, any backflow at this boundary is reset to zero, i.e.,

$$\mathbf{u} \cdot \mathbf{n}|_{\text{west}} > 0, \quad (10)$$

where \mathbf{n} is the outward pointing normal of the boundary.

4 Results

With the setup discussed in the previous section, we study the impact of wind on the valley. Our main focus is to study the BIA north of the moraine inside the valley, i.e., the larger one stretching from about 435 to 439 km easting and 1722.5 and 1724 km northing indicated as *inner northern BIA* in Fig. 2.

A first approach is to test the original DEM with the nose-shaped profile defined in Eq. (6) and compare it to the equilibrium surface mass balance (SMB) distribution obtained from a glacier flow model simulation (Zwinger et al., 2014) of the SBB valley, using the identical surface DEM. Assuming a non varying glacier surface, s , the

Title Page

Abstract

Introduction

Conclusions

References

Tables

Figures

⏪

⏩

◀

▶

Back

Close

Full Screen / Esc

Printer-friendly Version

Interactive Discussion



equilibrium SMB is given by

$$\text{SMB} = \underbrace{\frac{\partial s}{\partial t}}_{=0} + u_{\text{ice}} \frac{\partial s}{\partial x} + v_{\text{ice}} \frac{\partial s}{\partial y} - w_{\text{ice}}, \quad (11)$$

where $(u_{\text{ice}}, v_{\text{ice}}, w_{\text{ice}})^{\text{T}}$ are the Cartesian components of the surface ice velocity vector. The SMB distribution obtained by Zwinger et al. (2014) is depicted in Fig. 5.

The sensitivity of the wind-impact distribution with respect to the inflow profile was assessed by rerunning with the slightly altered inflow conditions, as presented in Eqs. (7) and (8). We then assess the sensitivity of the solution to bottom surface topography by using the smoothed DEM. Finally, we assess the effects of the LGM topography on the wind fields.

4.1 Variations of inflow profiles

The first simulation is conducted using the nose-shaped profile given by the cubic polynomial (6). We run the simulation for slightly longer than 20 min of physical time. Figure 6 shows the velocity magnitude at 5 m above ground based on snapshots starting at 500 s (when the first gusts reach the valley bottom) in steps of 250 to 1250 s (the end of the simulation). A detailed animation (AVI-format) of this particular run, along with animated GIFs of all runs conducted can be found in the Supplement of this article. From these snapshots it is clear that fast flow is focused on the inner BIAs. The wind speeds are consistently high above the ablation area found from the glacier flow simulation, indicated by the yellow polygon in Fig. 6. In particular the close correspondence in position of the high velocity streak with the northern boundary of the larger inner BIA at 1250 s into the simulation is striking.

Figure 7 shows results from similar simulations with altered inflow profiles as in Eqs. (7) and (8) at 1000 s into the simulation. Although the patterns obtained with these profiles are different from the reference run, both Fig. 7 and the supplemental

Wind at Scharffenbergbotnen Blue Ice Areas

T. Zwinger et al.

Title Page

Abstract

Introduction

Conclusions

References

Tables

Figures



Back

Close

Full Screen / Esc

Printer-friendly Version

Interactive Discussion



animated GIFS show consistently increased velocity over the inner BIAs, confirming the phenomenon of redirected fast flow.

4.2 Variations in the smoothness of the terrain

We are interested in how small scale topographic features may affect the flow details, and hence the impact of the DEM accuracy. To that end we smoothed the original DEM using the previously described algorithm and applied the nose-shape inflow defined by Eq. (6). Figure 8 (and supplementary animated GIF) shows the velocity magnitude 5 m above ground at 1000 s into the simulation. One striking difference from all runs conducted on the original terrain is that at 1000 s into the simulation the katabatic front has advanced about 1 km further into the valley. The general impression – even more supported by the series in the animated GIF than by the single snapshot – is that the areas of high impact wind velocities are less focused on the inner BIAs, compared with the reference run (Fig. 6).

4.3 LGM simulation

The surface elevation inside the valley of SBB may have been considerably higher (Näslund et al., 2000; Hättestrand and Johansen, 2005) at the LGM. We increased the ice-thickness by a constant 200 m inside and 100 m outside the valley and smoothed the surface to resemble glaciation of present-day nunataks (i.e., ice free areas on the bounding mountains of SBB valley). Figure 9 shows the distribution of the velocity magnitude 5 m above ground. In contrast with all other simulations conducted on the present day DEM – either in its original or smoothed form – the high velocity winds in the LGM simulation are distributed more randomly over the valley and not focused over present-day BIAs. In fact, the highest velocities at 1000 s into the simulation are located at the north-western end of the valley, close to the position of the outer BIA.

Wind at Scharffenbergbotnen Blue Ice Areas

T. Zwinger et al.

Title Page

Abstract

Introduction

Conclusions

References

Tables

Figures



Back

Close

Full Screen / Esc

Printer-friendly Version

Interactive Discussion



5 Case study of violent wind event

In January 2007 a field camp located near the head of the Scharffenbergbotnen valley was destroyed by a strong storm (Fig. 10). There are two reasonably close Automatic Weather Stations (AWS), AWS6 and AWS9, in the region of Scharffenbergbotnen. AWS9 is located at the summit of the regional ice field at 75°00'09" S 00°00'26" E and 2900 m.a.s.l., while AWS6 is about 40 km north of the Scharffenbergbotnen valley at 74°28'53" S 11°31'01" W and 1160 m.a.s.l. (Bintanja, 1999; Van den Broeke et al., 2005), the location of the weather stations in relation to Scharffenbergbotnen is shown in Fig. 1. Figure 11 shows the wind direction and magnitude recorded by the two AWSs over the first 22 days of 2007.

The largest wind speeds occur on the 11th and 12th day and are consistent in direction at the two AWS, with somewhat higher wind speeds occurring, as expected, at the lower AWS6 site. However the wind speeds in the Scharffenbergbotnen valley during the 11th and 12th day were not very high, indeed field work progressed normally on both days, with no drift snow, and the 12th day was notably sunny and pleasant. This was a synoptic scale event that may be classed as average conditions. However the event of 2–3 January was extremely strong in Scharffenbergbotnen, but not significant on a synoptic scale, with moderate winds and inconsistent directions at AWS6 and AWS9. Such relatively stable conditions on the higher ice sheet may actually favour the formation of a katabatic jet. Even 40 km north of the Scharffenbergbotnen valley the katabatic jet had dissipated sufficiently for there to be no trace of it in the AWS6 record. The debris from the 2–3 January storm was dispersed over much of the valley and provide traces for recirculation areas. The location where the field camp was originally placed and where a tent from the destroyed camp was found is shown in Fig. 1. This and many other items were all found on snow accumulation areas and not on the blue ice area. Existing snow and even hard firn was ripped from the BIA such that the extent of the BIA was increased by perhaps 30 % relative to that before the storm. This suggests that such storms are rather infrequent, and that the BIA extent may be gov-

TCD

9, 2231–2257, 2015

Wind at Scharffenbergbotnen Blue Ice Areas

T. Zwinger et al.

Title Page

Abstract

Introduction

Conclusions

References

Tables

Figures



Back

Close

Full Screen / Esc

Printer-friendly Version

Interactive Discussion



erned by rare stochastic events that remove the steadily accumulated snow and firn of several years.

6 Conclusions

By conducting local wind simulations above the Scharffenbergbotnen valley we show that katabatic surface jets coming from the east, produce high-impact wind speeds at exactly the location of the inner blue ice area. These types of wind were probably directly experienced in the field during January 2007 when a highly localized event caused clearing of surface firn, likely to be several years old, from underlying bare ice. During this event simultaneously taken direct and AWS observations support the dominant role of local katabatic events rather than synoptic storm events in formation of the Scharffenbergbotnen BIA.

Sensitivity analysis to changes in vertical wind-profile shapes and DEMs revealed that the topography is mainly responsible for the distribution of the the high wind-impact features. For all simulation runs with the present-day DEM, the derived locations of both fast wind flow and recirculation areas match well with the location of the inner BIA in the Scharffenbergbotnen valley. In contrast, a simulation conducted with increased ice thickness imposed on the present-day DEM (resembling conditions at Late Glacial Maximium) revealed that snow and firn removal focused at the position of the inner BIA most likely occurred only after the lowering of the ice in the SBB valley. Only then did the present day shape of the surrounding rocks surface from beneath the retreating and lowering ice-sheet. In other words, the inner BIA at Scharffenbergbotnen is younger than the LGM. This is in agreement with the findings of Zwinger et al. (2014), who came to similar conclusion by looking at age/depth horizons of a full-stress ice flow model.

We suggest that other BIAs in similar mountain regimes can be effectively generated by katabatic jets, and that these jets are produced independently of synoptic storms. It

Wind at Scharffenbergbotnen Blue Ice Areas

T. Zwinger et al.

Title Page

Abstract

Introduction

Conclusions

References

Tables

Figures



Back

Close

Full Screen / Esc

Printer-friendly Version

Interactive Discussion



is conceivable that other BIAs may be controlled by extremely powerful synoptic storms that occur from time to time and scour snow and firn from the surface of the BIAs.

**The Supplement related to this article is available online at
doi:10.5194/tcd-9-2231-2015-supplement.**

5 *Acknowledgements.* Mikko Lyly (ABB, Finland), Juha Ruokolainen (CSC – IT Center for Science Ltd., Finland) and Peter Råback (CSC – IT Center for Science, Ltd. Finland) are thanked for their support and expertise help on solving CFD problems with Elmer. We express our gratitude to Carleen Tijm-Reijmer (IMAU, Utrecht University, Netherlands), who provided us with the AWS data presented in Sect. 5. T. Malm was supported by the European Science Foundation Project – SvalGlac. J.C. Moore, M. Schäfer and T. Zwinger have been supported by the Finnish academy project: dynamical evolution of Scharffenbergbotnen blue ice area since the Late Glacial Maximum. All simulations were performed on the supercomputers of CSC-IT Center for Science, Ltd..

References

- 15 Bazilevs, Y., Michler, C., Calo, V. M., and Hughes, T. J. R.: Turbulence without Tears: Residual-Based VMS, Weak Boundary Conditions, and Isogeometric Analysis of Wall-Bounded Flows, ICES Report No. 08-07, Institute for Computational Engineering and Sciences, The University of Texas at Austin, Austin, 2008. 2236, 2237
- Bintanja, R.: On the glaciological, meteorological, and climatological significance of Antarctic blue ice areas, *Rev. Geophys.*, 37, 337–359, doi:10.1029/1999RG900007, 1999. 2233, 2242
- 20 Bintanja, R. and Reijmer, C. H.: Meteorological conditions over Antarctic blue-ice areas and their influence on the local surface mass balance, *J. Glaciol.*, 47, 37–50, 2001. 2233
- Bromwich, D. H., Du, Y., and Parish, T. H.: Numerical simulation of winter katabatic winds from west Antarctica crossing Siple Coast and the Ross Ice Shelf, *Mon. Weather Rev.*, 122, 1417–1435, 1994. 2233
- 25 Gallée, H.: Simulation of blowing snow over the Antarctic ice sheet, *Ann. Glaciol.*, 26, 203–206, 1998. 2234

Wind at Scharffenbergbotnen Blue Ice Areas

T. Zwinger et al.

Title Page

Abstract

Introduction

Conclusions

References

Tables

Figures



Back

Close

Full Screen / Esc

Printer-friendly Version

Interactive Discussion



Wind at Scharffenbergbotnen Blue Ice Areas

T. Zwinger et al.

Title Page

Abstract

Introduction

Conclusions

References

Tables

Figures

◀

▶

◀

▶

Back

Close

Full Screen / Esc

Printer-friendly Version

Interactive Discussion



Gallée, H. and Schayes, G.: Development of a three-dimensional meso- γ primitive equation model: katabatic winds simulation in the area of Terra Nova Bay, Antarctica, *Mon. Weather Rev.*, 122, 671–685, 1994 2234

Geuzaine, C. and Remacle, J.-F.: Gmsh: a three-dimensional finite element mesh generator with built-in pre- and post-processing facilities, *Int. J. Numer. Meth. Eng.*, 79, 1309–1331, 2009. 2237

Gjaever, J.: The White Desert: The official account of the Norwegian–British–Swedish Antarctic Expedition, Greenwood Pub Group, New York, ISBN 0-8371-1318-0, 1969 2233

Gravemeier, V.: The Variational Multiscale Method for Laminar and Turbulent Incompressible Flow, Ph.D. thesis, Institut für Baustatik, Universität Stuttgart, Stuttgart, Bericht No. 40, ISBN 3-00-013034-9, 2003. 2237

Gravemeier, V., Lenz, S., and Wall, W. A.: Variational multiscale methods for incompressible flows, in: International Conference on Boundary and Interior Layers, BAIL 2006, edited by: Lube, G. and Rapin, G., 24–28 July 2006, Göttingen, Germany, 2006. 2237

John, V., Kindl, A., and Suci, C.: Finite element LES and VMS methods on tetrahedral meshes, *J. Comput. Appl. Math.*, 233, 3095–3102, doi:10.1016/j.cam.2009.06.005, 2010. 2236

Kelley, C. T.: Iterative methods for linear and nonlinear equations, in: *Frontiers in applied mathematics*, SIAM, Philadelphia, 33–36, ISBN 0-89871-352-8, 1995. 2237

Hättestrand, C. and Johansen, N.: Supraglacial moraines in Scharffenbergbotnen, Heimfrontjella, Dronning Maud Land, Antarctica – significance for reconstructing former blue ice areas. *Antarct. Sci.*, 17, 225–236, doi:10.1017/S0954102005002634, 2005. 2233, 2238, 2241

Hoffman, J. and Johnson, C.: A new approach to computational turbulence modeling, *Comput. Methods Appl. Mech. Engrg.*, 195, 2865–2880, doi:10.1016/j.cma.2004.09.015, 2006. 2236

Hoffman, J. and Johnson, C.: Computational Turbulent Incompressible Flow, *Applied Mathematics: Body and Soul*, 4, Springer, Berlin, Heidelberg, New York, doi:10.1007/978-3-540-46533-1, 2007. 2236

Hughes, T. J. R.: Multiscale phenomena: Green’s functions, the Dirichlet-to-Neumann formulation, subgrid scale models, bubbles and the origins of stabilized methods, *Comput. Method. Appl. M.*, 127, 387–401, doi:10.1016/0045-7825(95)00844-9, 1995 2236, 2237

Malm, T.: Simulation of Wind Fields at Scharffenbergbotnen, Antarctica and their Impact on Blue Ice Areas, M.S. thesis, Aalto University, School of Engineering, Espoo, Finland, available at: <http://urn.fi/URN:NBN:fi:aalto-201207022723>, 2012. 2238

Wind at Scharffenbergbotnen Blue Ice Areas

T. Zwinger et al.

Title Page

Abstract

Introduction

Conclusions

References

Tables

Figures



Back

Close

Full Screen / Esc

Printer-friendly Version

Interactive Discussion



- Moore, J. C., Nishio, F., Fujita, S., Narita, H., Pasteur, E., Grinsted, A., Sinisalo, A., and Maeno, N.: Interpreting ancient ice in a shallow ice core from the South Yamato (Antarctica) blue ice area using flow modeling and compositional matching to deep ice cores, *J. Geophys. Res.*, 111, D16302, doi:10.1029/2005JD006343, 2006 2233
- 5 Näsrlund, J. O., Fastook, J. L., and Holmlund, P.: Numerical modeling of the ice sheet in western Dronning Maud Land, East Antarctica: impacts of present, past and future climates, *J. Glaciol.* 46, 54–66, 2000. 2238, 2241
- Rautaheimo, P.: Developments in Turbulent Modelling with Reynolds-Averaged Navier-Stokes Equations, Ph.D. thesis, Helsinki University of Technology, Department of Mechanical Engineering, Espoo, Finland, ISBN 951-666-569-1, available at: <http://urn.fi/urn:nbn:fi:tkk-002766>, 2001. 2235
- 10 Sinisalo, A.: Geophysical Exploration of Antarctic Blue Ice Areas (BIAs) for Paleoclimate Applications, Ph.D. Thesis, University of Oulu, Oulu, Finland, 2007. 2233
- Sinisalo, A. and Moore, J. C.: Antarctic Blue Ice Areas (BIAs) – towards extracting paleoclimate information, *Antarct. Sci.*, 22, 99–115, doi:10.1017/S0954102009990691, 2010. 2232, 2233
- 15 Sinisalo, A., Grinsted, A., and Moore, J. C.: Scharffenbergbotnen (Dronning Maud Land, Antarctica) blue-ice area dynamics, *Ann. Glaciol.*, 39, 417–422, 2004. 2233
- Skyllingstad, E. D.: Large-eddy simulation of katabatic flows, *Bound.-Lay. Meteorol.*, 106, 217–243, 2003. 2234
- 20 Van den Broeke, M. R., Reijmer, C. H., van As, D., van de Wal, R. S. W., and Oerlemans, J.: Seasonal cycles of Antarctic surface energy balance from automatic weather stations, *Ann. Glaciol.*, 41, 131–139, 2005. 2242
- Yu, Y. and Cai, X.: King, J. C., and Renfrew, I. A.: Numerical simulations of katabatic jumps in Coats Land, Antarctica, *Bound.-Lay. Meteorol.*, 114, 413–437, 2005. 2234
- 25 Zwinger, T., Schäfer, M., Martín, C., and Moore, J. C.: Influence of anisotropy on velocity and age distribution at Scharffenbergbotnen blue ice area, *The Cryosphere*, 8, 607–621, doi:10.5194/tc-8-607-2014, 2014. 2233, 2239, 2240, 2243, 2248, 2251

Wind at Scharffenbergbotnen Blue Ice Areas

T. Zwinger et al.

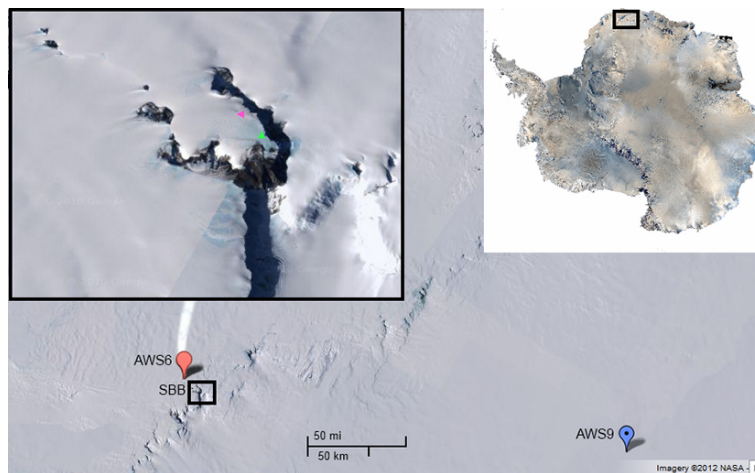


Figure 1. A map of Antarctica is shown at the top right with the domain shown in main image in the boxed area. In the main image, the AWS6 and AWS9 locations are marked and the Scharffenbergbotnen area is enclosed by the box and shown in detail at the top left. Windtails can be seen generally in a westerly direction from the nunataks, indicating winds from the east. The green triangle on the east border of the larger inner BIA shows where a field camp was located before it was destroyed by a storm on the 2–3 January 2007, and the magenta triangle shows where one destroyed tent was found after the storm with debris scattered over a wide area of the snow covered ground. Imagery courtesy of NASA.

[Title Page](#)[Abstract](#)[Introduction](#)[Conclusions](#)[References](#)[Tables](#)[Figures](#)[Back](#)[Close](#)[Full Screen / Esc](#)[Printer-friendly Version](#)[Interactive Discussion](#)

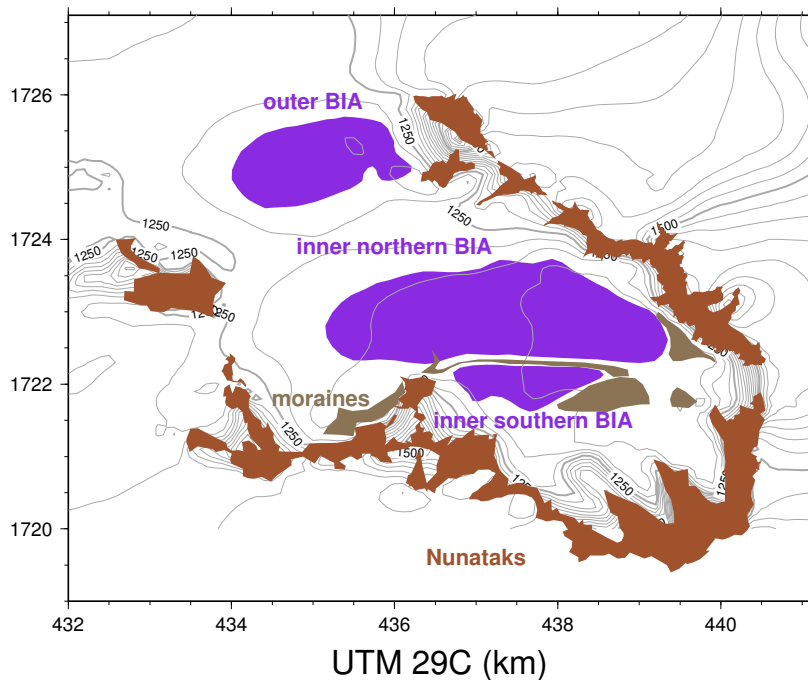


Figure 2. The Scharffenbergbotnen area, with the location of the Blue Ice Areas (purple), exposed rocks on top of hills and mountains (brown) and moraines (gray). Iso-lines of elevation are given in steps of 25 m. The inner BIAs are divided by a moraine into a northern and a southern BIA. Many of the other marked moraines are actually blue ice covered by rocks and much of the flatter area south and east of the inner blue ice areas is likely blue ice more or less covered by a thin layer of rocky material carried by ice flow from snow accumulation regions on the valley sides. Zwinger et al. (2014) show that ice flow to the inner northern BIA originates from snow accumulated on the ridge between it and the outer BIA. Coordinates are in UTM 29C system.

Wind at Scharffenbergbotnen Blue Ice Areas

T. Zwinger et al.

Title Page

Abstract

Introduction

Conclusions

References

Tables

Figures



Back

Close

Full Screen / Esc

Printer-friendly Version

Interactive Discussion



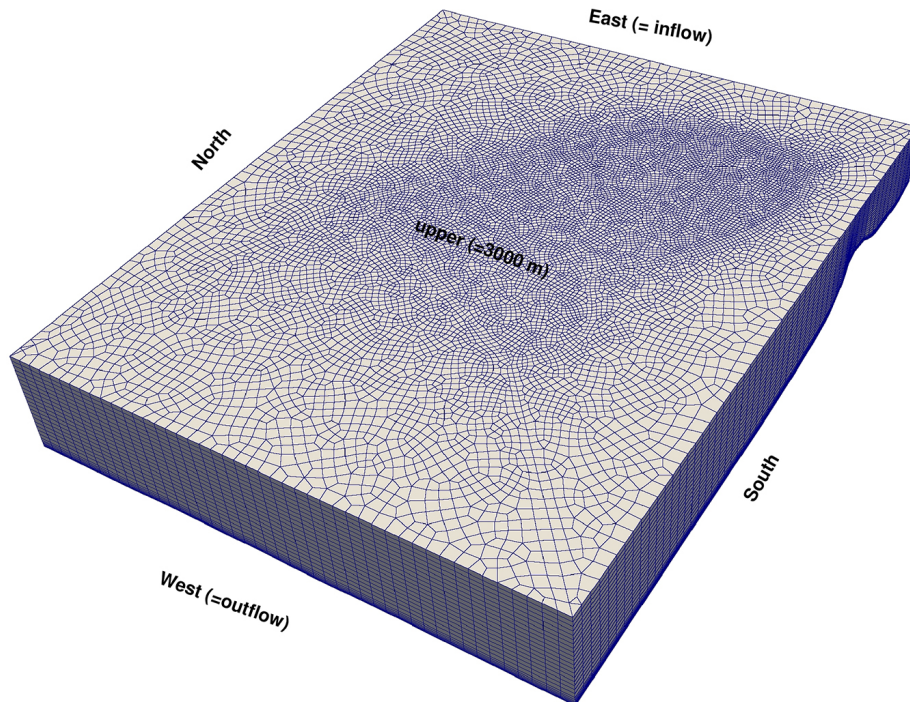


Figure 3. The discretized domain, Ω . Horizontal resolutions reach from 50 m close to the valley slopes to 200 m. The vertical terrain following extrusion is not equidistant, but rather features a mesh refinement in the lower 10% of the height in order to capture boundary layer effects.

Wind at
Scharffenbergbotnen
Blue Ice Areas

T. Zwinger et al.

Title Page	
Abstract	Introduction
Conclusions	References
Tables	Figures
◀	▶
◀	▶
Back	Close
Full Screen / Esc	
Printer-friendly Version	
Interactive Discussion	



Wind at Scharffenbergbotnen Blue Ice Areas

T. Zwinger et al.

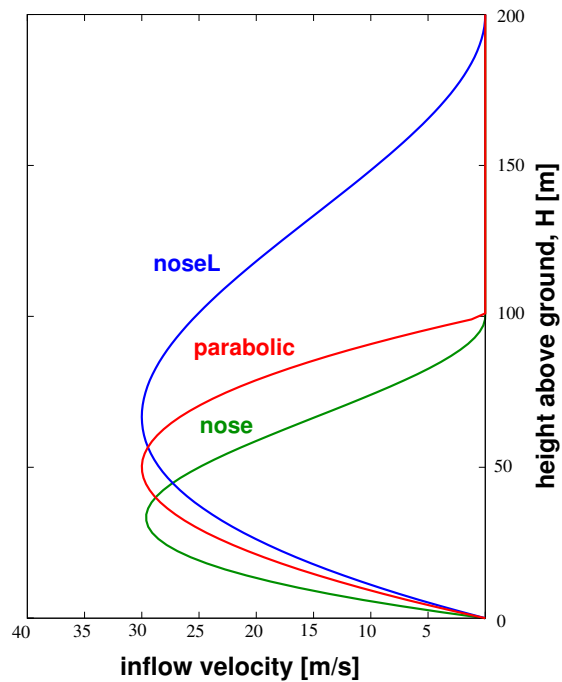


Figure 4. Normal inflow velocities at the eastern boundary, resembling the katabatic wind front.

[Title Page](#)[Abstract](#)[Introduction](#)[Conclusions](#)[References](#)[Tables](#)[Figures](#)[◀](#)[▶](#)[◀](#)[▶](#)[Back](#)[Close](#)[Full Screen / Esc](#)[Printer-friendly Version](#)[Interactive Discussion](#)

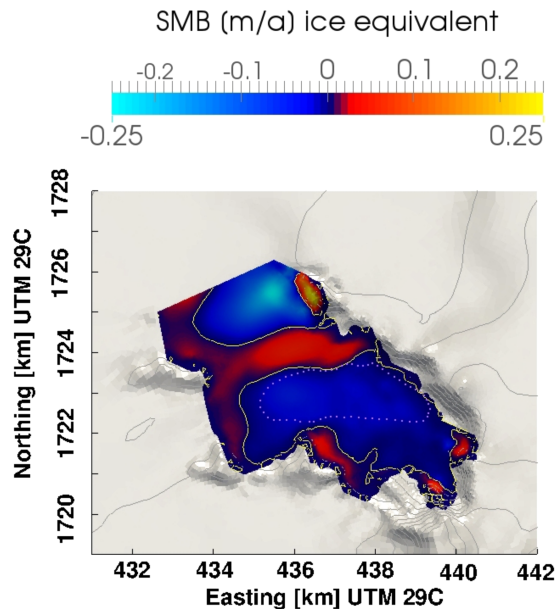


Figure 5. The computed equilibrium surface mass balance from the ice flow simulation by Zwinger et al. (2014). The colours – confined to the glaciated area inside the valley – show the equilibrium surface mass balance (Eq. 11) in ma^{-1} ice equivalent (density of ice, $\rho_i = 910 \text{ kg m}^{-3}$). The yellow line indicates net zero accumulation and the white dotted line depicts the northern inner BIA (see Fig. 2). The gray contour lines show the elevation of the wider terrain in steps of 100 m.

Wind at
Scharffenbergbotnen
Blue Ice Areas

T. Zwinger et al.

Title Page

Abstract

Introduction

Conclusions

References

Tables

Figures



Back

Close

Full Screen / Esc

Printer-friendly Version

Interactive Discussion



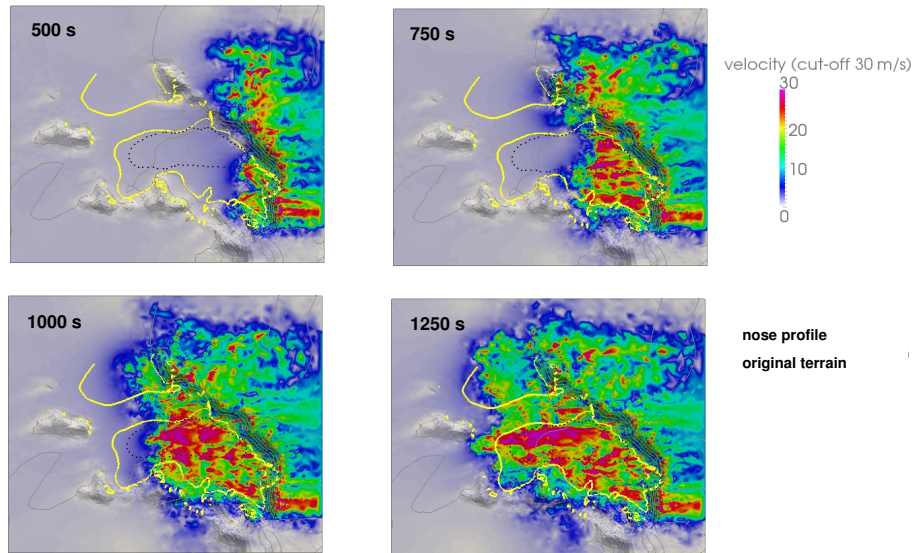


Figure 6. Velocity magnitude 5 m above the surface of the simulation using the nose profile (Eq. 6) displayed at 500, 750, 1000 and 1250 s into the simulation. The yellow line indicates zero net accumulation (equal to Fig. 5) obtained by glacier dynamics simulations. The black dotted line denotes the northern inner BIA.

Wind at Scharffenbergbotnen Blue Ice Areas

T. Zwinger et al.

Title Page

Abstract Introduction

Conclusions References

Tables Figures

◀ ▶

◀ ▶

Back Close

Full Screen / Esc

Printer-friendly Version

Interactive Discussion



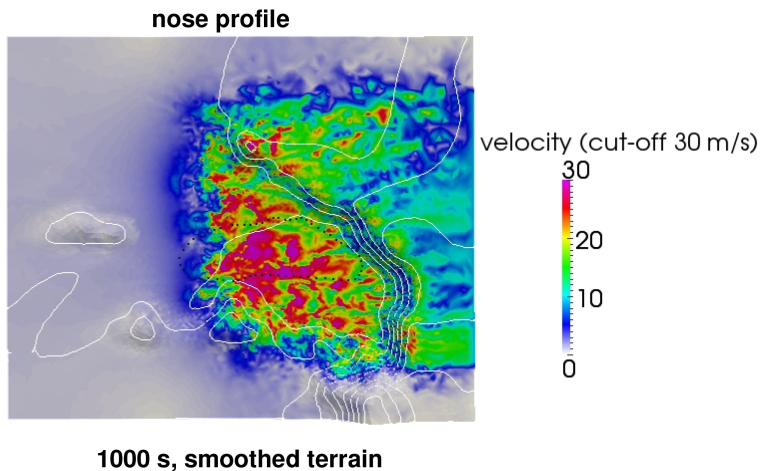


Figure 8. Velocity magnitude 5 m above the surface of the simulation using the nose-shape (Eq. 6) profile on a smoothed present day terrain displayed at 1000 s into the simulation. The northern inner BIA is indicated by the black dotted line.

**Wind at
Scharffenbergbotnen
Blue Ice Areas**

T. Zwinger et al.

Title Page	
Abstract	Introduction
Conclusions	References
Tables	Figures
◀	▶
◀	▶
Back	Close
Full Screen / Esc	
Printer-friendly Version	
Interactive Discussion	



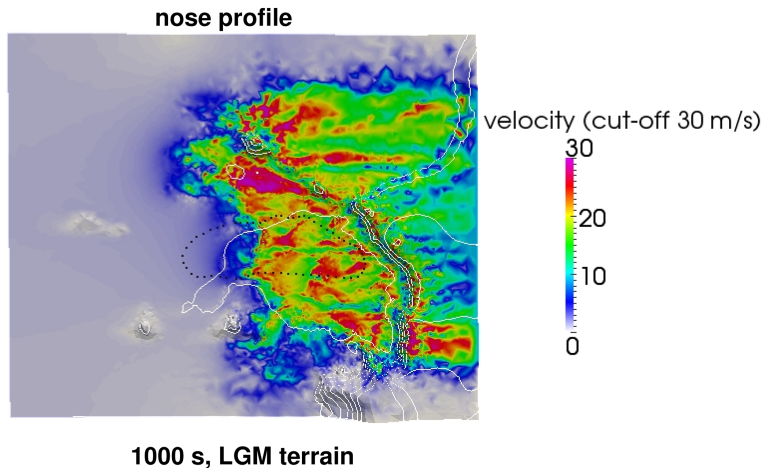


Figure 9. Velocity magnitude 5 m above the surface of the simulation using the nose-shape (Eq. 6) profile on the LGM terrain displayed at 1000 s into the simulation. The northern inner BIA is indicated by the black dotted line.

**Wind at
Scharffenbergbotnen
Blue Ice Areas**

T. Zwinger et al.

Title Page	
Abstract	Introduction
Conclusions	References
Tables	Figures
◀	▶
◀	▶
Back	Close
Full Screen / Esc	
Printer-friendly Version	
Interactive Discussion	



Wind at Scharffenbergbotnen Blue Ice Areas

T. Zwinger et al.



Figure 10. View over the northern inner BIA from east to west, showing the destroyed camp after the storm of the 2–3 January 2007. The arrow shows the location where another tent from the camp was found. The photo was taken by J.C. Moore.

[Title Page](#)[Abstract](#)[Introduction](#)[Conclusions](#)[References](#)[Tables](#)[Figures](#)[◀](#)[▶](#)[◀](#)[▶](#)[Back](#)[Close](#)[Full Screen / Esc](#)[Printer-friendly Version](#)[Interactive Discussion](#)

