

Reply to RC C475

We thank the reviewer for the valuable comments and suggestions. We have revised the paper substantially and carefully made corrections according to reviewer's comments. Our detailed point-by-point response to the reviewer's comments is given below.

1. The text fails to adequately refer to and use existing knowledge on characteristics of simulated climate change in general and dynamics of SWE change in particular. There are (at least) three key findings that are basically known from earlier research and therefore would not require much discussion in this paper:

A. The dependence of global mean warming on the RCP emission pathway is small for the next few decades but increases rapidly towards the end of this century (IPCC WG12013, Chapter 12).

Answer: Thank you for your suggestion. This is true, which can be certified by the figures 4 and 6 in the manuscript.

B. Other aspects of anthropogenic climate change scale more or less directly with the global mean warming (Frieler et al. 2012, Journal of Climate; IPCC WG1 2013, Chapter 12). Therefore, it is logical to assume that the dependence of SWE changes on the RCP scenarios follows the pattern indicated in 1.

Answer: Thank you for your suggestion. This is logical, however, in this paper, we only want to analyze the response characteristic of SWE to climate change during different periods and emission scenarios.

C. SWE is governed by three factors: (i) total precipitation, (ii) the fraction of precipitation that falls as snow, and (iii) melting of snow in mild periods. Given that climate models project both an increase in winter precipitation in mid-to-high-latitude Northern Hemisphere (as documented in IPCC WG1 2013, Chapter 12) and an increase in temperature, it is obvious that (i) tends to increase SWE whereas (ii) and

1 (iii) tend to reduce it. In Räisänen (2008, Climate Dynamics), a diagnostic method
2 was presented that helps to quantify the contributions of these factors and thus the
3 precipitation and temperature change effects. Such a diagnostic decomposition would
4 confirm the importance of temperature changes much more directly than the
5 correlation analysis presented in the current manuscript.

6 **Answer:** Thank you for your suggestion. The diagnostic method recommended above
7 is now used in the revised manuscript to identify the contribution of total
8 precipitation, the fraction of solid precipitation, and the fraction of accumulated
9 snowfall (page 25, L4-18).

10

11 2. The results are almost exclusively presented as absolute SWE changes. This
12 makes comparison between different areas and seasons difficult to interpret, because
13 the change is necessarily constrained by the baseline SWE. If, for example, area A
14 has baseline SWE of 50 mm and loses all of it, whereas area B has baseline SWE of
15 200 mm and loses half of it, is it meaningful to say that the change is smaller in A
16 than B? To help the interpretation, relative (per cent) changes should be shown along
17 with (or instead of) absolute changes. Furthermore, if the authors maintain that
18 absolute changes are more important than relative changes, they should motivate this
19 focus. While local absolute changes in SWE might indeed be important from a
20 hydrological point of view, what (if anything) do the Northern Hemisphere mean
21 changes tell?

22 **Answer:** Thank you for your suggestion. In fact, Figure 3 (with revised units) shows
23 the relative change in SWE. Furthermore, the zonal and monthly changes in SWE are
24 described in terms of the relative change in the revised manuscript (Figures 4 and 5).

25

26 3. The finding that the rate of decrease in the Northern Hemisphere mean SWE
27 tends to slow down with increasing warming may actually not be correct (detailed
28 comment 37 below). Even if it is correct, it would require physical interpretation and
29 a regionally more detailed analysis. Obviously, as climate warms, some areas will
30 lose their snow cover and will show no further decreases in SWE after that. On the

1 other hand, some cold areas that first exhibit an increase in SWE with warming might
2 begin to experience decreases in SWE after a threshold temperature is passed. Thus,
3 the behaviour in this respect is very unlikely to be uniform over all of the Northern
4 Hemisphere.

5 **Answer:** Thank you for your suggestion. We have deleted this section in the revised
6 manuscript.

7

8 4. Parts of the analysis seem physically meaningless. In particular, what is the point
9 in analysing the spatial maximum of the annual mean SWE in Figure 4? These results
10 basically reflect model behaviour in a few single grid boxes and have no wider
11 relevance.

12 **Answer:** Thank you for your suggestion. In fact, the maximum annual SWE
13 (abnormal value has been removed) shows change in SWE in winter. However, as
14 zonal changes in the maximum annual SWE are the same as changes in the zonal
15 mean SWE, we have deleted this section in the revised manuscript.

16

17 5. The documentation of the methods is insufficient. For example, what do the
18 correlation and regression coefficients between SWE and temperature represent in
19 Tables 2 and 3? Were they calculated from interannual variations of Northern
20 Hemisphere land mean temperature and SWE, or from local interannual variations of
21 temperature and SWE with appropriate averaging afterwards, or from something else?
22 I assume that the first alternative was used but this is not documented in the text

23 **Answer:** Thank you for your suggestion. The correlation and regression coefficients
24 are calculated from the interannual variation of SWE and temperature over NH land
25 where snow exists. We have added the equations used to calculate the regression
26 coefficients to the revised manuscript (page 8, L24-26).

27

28 6. The technical presentation of the results is not well-thought. The single most out
29 standing example are Tables 2-3, which include a huge set of highly variable numeric
30 values. The implications of these numbers, if any, will be very hard to judge for a

1 reader of the article – a classical “don’t see the forest from the trees” problem.

2 **Answer:** Thank you for your suggestion. We want to show the relationship between
3 SWE and temperature during different periods and for three RCPs to identify changes
4 over time and with different emission scenarios. In this respect, Tables 2 and 3 are
5 useful, but the manuscript has been modified (page 15, L11-25) to clarify the results.

6

7 7. There are substantial problems in the English language of the manuscript.
8 Suggesting any detailed improvements to these goes beyond my resources. It seems
9 that the only solution in this respect is to let a professional language editor to correct
10 the text, or to find a skilful colleague who is able and voluntary to do this.

11 **Answer:** Thank you for your suggestion. The manuscript has been edited by Stallard
12 Scientific Editing.

13

14 8. It seems that the manuscript was submitted very hastily without even properly
15 checking the list of references, which is not consistent with the references cited in the
16 text.

17 **Answer:** Thank you for your suggestion. We have checked in the revised manuscript.

18

19 **Specific Comments:**

20 1. P2136, L13 “the reduction in SWE there is related to rising temperature”. You
21 don’t need to calculate correlation coefficients to make this conclusion which is
22 obvious from physical reasoning alone.

23 **Answer:** Thank you for your suggestion. Previous studies suggest that both
24 temperature and precipitation show an increasing trend at mid–high latitudes. Partial
25 correlation is an effective way to identify the major control on SWE and to separate
26 the contributions of temperature and precipitation. The present results show that
27 temperature plays a major role in controlling SWE at high latitudes.

28

29 2. P2136, L14-15. “temperature may reach a threshold value”. Regionally,
30 “threshold values” of temperature will be reached when the climate becomes

1 essentially snow free. However, this will not happen everywhere in the Northern
2 Hemisphere at the same time!

3 **Answer:** Thank you for your suggestion. We understand that the temperature
4 threshold may not be reached simultaneously over different regions in the Northern
5 Hemisphere. Here, we want to indicate that a threshold value exists in the relationship
6 between SWE and temperature, across which the characteristic response of SWE to
7 temperature may change.

8

9 3. P2136, L26 – P2137, L9. Please focus on the most up-to-date information that is
10 available in AR5. The earlier IPCC assessments do not add anything important to
11 that.

12 **Answer:** Thank you for your suggestion. We have revised this section in the revised
13 manuscript (page 3, L6-17).

14

15 4. P2137, L15-16. Just like SWE, snow depth is affected by both temperature and
16 precipitation.

17 **Answer:** Thank you for your suggestion. Snow depth is affected by temperature and
18 precipitation. However, snow depth places an emphasis on the accumulation of snow,
19 we have corrected in the revised manuscript (page 4, L8-9).

20

21 5. P2137, L25-27. How is the first part of the sentence “Following comparison with
22 observational data” related to the second part “global climate models consistently
23 project”? The model projections are not dependent of observations.

24 **Answer:** Thank you for your suggestion. The model projections are not dependent on
25 observations. we have deleted this section in the revised manuscript.

26

27 6. P2138, L4-6. Can you give the original reference of this regional climate
28 simulation? It is very unlikely to be the IPCC AR4 chapter by Christensen et al.
29 (2007).

1 **Answer:** Thank you for your suggestion. We have rewritten this section, and we
2 consider that this reference is not needed.

3

4 7. P2138, L25-27. Whether this is true or not depends on the baseline climate.

5 **Answer:** Thank you for your suggestion. We have reanalyzed the relative change in
6 SWE in the revised manuscript, revealing that it depends on the baseline climate
7 (figure 3,4 ,5).

8

9 8. P2138, L28-29. Rather “since climate change is dependent: : :” because this is
10 true for all aspects of climate change.

11 **Answer:** Thank you for your suggestion. We have deleted this section in the revised
12 manuscript.

13

14 9. P2139, L1-5. This sentence gives a strange impression. Is it not physically
15 obvious that both temperature and precipitation play a role?

16 **Answer:** Thank you for your suggestion. Both temperature and precipitation have an
17 impact on SWE, but the major control on SWE varies over different temporal and
18 spatial scales.

19

20 10. P2140, L15. Be specific: spatial correlations?

21 **Answer:** Thank you for your suggestion. The correlation refers to the spatial
22 correlation. We have revised the manuscript accordingly (page 9, L5).

23

24 11. P2140, L16-17. It does not make much sense to report that the correlation
25 between the model simulations and observations is statistically significant (because
26 this is highly unsurprising). In this case, the magnitude of the correlations is more
27 interesting than their significance.

28 **Answer:** Thank you for your suggestion. We have corrected this point in the revised
29 manuscript (page 9, L17-19).

30

1 12. P2140, L18-20. Time series of what? The Northern Hemisphere mean SWE or
2 local SWE?

3 **Answer:** Thank you for your suggestion. The time series is the average SWE over the
4 Northern Hemisphere during 1980–2005.

5

6 13. P2141, L18-19. (This pattern suggests: : :). Delete. There is no point in repeating
7 well-known facts that hold for all aspects of anthropogenic climate change.

8 **Answer:** Thank you for your suggestion. This sentence has been deleted in the
9 revised manuscript.

10

11 14. P2141, L19-20. (Meanwhile: : :). Also delete this, for the same reason.

12 **Answer:** Thank you for your suggestion. This sentence has been deleted in the
13 revised manuscript.

14

15 15. P2142, L1-2. Is this also true when the changes are expressed in relative (i.e.
16 percent) units?

17 **Answer:** Thank you for your suggestion. We have calculated the relative change in
18 SWE. Due to the higher baseline SWE in winter, the reduction in spring is greater
19 than that in winter. We have revised the manuscript accordingly (page 11, L15-19).

20

21 16. P2142, L12-15 (Viewed in greater detail : :). Delete. This is well known from a
22 large number of earlier studies.

23 **Answer:** Thank you for your suggestion. This sentence has been deleted in the
24 revised manuscript.

25

26 17. P2142, L19-20. (And the magnitude of the decrease: : :). This is the case just
27 because there is more snow in higher than in lower latitudes. The relative decrease in
28 SWE (which would be more informative for many practical purposes) is larger at
29 lower than in higher latitudes.

30 **Answer:** Thank you for your suggestion. We have calculated the relative change in

1 SWE, revealing that the magnitude of the SWE decrease shows a gradual decline
2 from south to north (page 12, L5-8).

3

4 18. P2142, L23-24. (The relative changes in SWE are similar: : :). While the absolute
5 (not relative!) changes are smaller at lower latitudes, the scenario-dependence of the
6 changes shows exactly the same pattern south and north of 60 N in Fig. 4e

7 **Answer:** Thank you for your suggestion. We have recalculated the relative change in
8 SWE. The greatest change in SWE occurs at lower latitudes, and the magnitude of
9 change decreases with increasing latitude for all three RCPs.

10

11 19. P2142, L26-27. (Moreover : : :). Delete. Nothing new.

12 **Answer:** Thank you for your suggestion. This sentence has been deleted in the
13 revised manuscript.

14

15 20. P2142, L27-29. There is a large body of research on the causes of the polar
16 amplification of greenhouse-gas induced warming (see e.g. box 5.1 in IPCC AR5).
17 Reduced snow cover is just part of the story.

18 **Answer:** Thank you for your suggestion. We have deleted this section in the revised
19 manuscript.

20

21 21. P2143, L1-L28. As pointed out in the general comments, the analysis of ZMSWE
22 is meaningless. Delete

23 **Answer:** Thank you for your suggestion. The analysis of ZMSWE has been deleted
24 in the revised manuscript.

25

26 22. P2143, L16-18. Brutel-Vuilmet et al. (2013, not 2008!) study the change in the
27 average annual maximum SWE, not the change in maximum of annual mean SWE.
28 These are different things!

29 **Answer:** Thank you for your suggestion. The analysis of the average annual
30 maximum SWE has been deleted in the revised manuscript.

1

2 23. P2143, L28 – P2144, L1. This text is repetitive. Delete

3 **Answer:** Thank you for your suggestion. We have deleted this sentence in the revised
4 manuscript.

5

6 24. P2144, L3-4. How were the slopes and correlations in Table 2 calculated? Are
7 they based on interannual or spatial variability of temperature and snowfall?

8 **Answer:** Thank you for your suggestion. The equation used to calculate the
9 regression slope is given in the revised manuscript (page 8, L24-26). The slope and
10 correlation are based on the interannual variability of temperature and SWE.

11

12 25. P2144, L3-8. I would be very careful to draw any conclusions from Table 2. First,
13 it is not self-evident that the long-term climate change relationship between
14 temperature and SWE is quantitatively the same than the interannual relationship.
15 Second, the large and irregular variability of the numbers in Table 2 suggests that
16 they are substantially affected by internal variability, even when they are statistically
17 significantly different from zero.

18 **Answer:** Thank you for your suggestion. Here, we only want to show changes in the
19 response of SWE to temperature during different periods in the 21st century.
20 Although the results were calculated using interannual SWE and temperature, the
21 regress slope gradually decreases from the EP to the LP for RCP8.5, and gradually
22 increases from south to north, which illustrates the response of SWE to temperature
23 during different periods and for latitude bands.

24

25 26. P2144, L20-21. Why not include the observations in Fig. 5?

26 **Answer:** Thank you for your suggestion. Figure 5 shows the changes in SWE over
27 the Northern Hemisphere where snow exists. However, observations from GlobSnow
28 only represent SWE at high latitudes. Therefore, observations are not included in
29 Figure 5.

30

1 27. P2144, L27. How can seasonal SWE changes be contrary to monthly changes?
2 Or do you mean that the decrease in SWE is smallest in summer when the baseline
3 SWE is also smallest?

4 **Answer:** Thank you for your suggestion. SWE has the largest values in winter and
5 the smallest in summer, and the absolute changes therefore indicate that the decrease
6 in SWE is largest in winter and smallest in summer. Given that the baseline SWE, we
7 now describe the results in terms of the relative change in SWE (page 17, L18-25).

8

9 28. P2145, L1-6. Shorten this text. It is well known from earlier research that larger
10 forcing leads both to larger multi-model mean changes and larger inter-model
11 differences in the response to the forcing.

12 **Answer:** Thank you for your suggestion. We have rewritten this section in the revised
13 manuscript (page 17, L21-25).

14

15 29. P2145, L7-9. This pattern would be reversed if you considered relative rather
16 than absolute SWE changes.

17 **Answer:** Thank you for your suggestion. We have calculated the relative change in
18 SWE in the revised manuscript, which shows an opposite pattern to the absolute
19 change (page 17, L19-21).

20

21 30. P2145, L10-26. It is not very meaningful to relate SWE change to changes in the
22 Northern Hemisphere land mean temperature and precipitation, as much of the
23 hemisphere is snow-free particularly in summer. It would be better to calculate the
24 temperature and precipitation changes over the area where snow does occur during
25 the baseline period. Even better would be to explicitly diagnose the effects of
26 precipitation and temperature changes as in Räisänen (2008).

27 **Answer:** Thank you for your suggestion. In this manuscript, both temperature and
28 precipitation are calculated over regions where snow exists. For diagnosing the effect
29 of temperature and precipitation on SWE in the revised manuscript, we used the
30 technique proposed by Räisänen (2008).

1

2 31. P2145, L25-26. In mid-to-high latitudes (which are obviously most important for
3 the SWE change) the largest precipitation increases tend to occur in winter (e.g. IPCC
4 AR5, Fig. 12.22).

5 **Answer:** Thank you for your suggestion. In the revised manuscript, we have analyzed
6 the relative change in precipitation, revealing that the largest increase occurs in
7 winter (page 18, L18-26).

8

9 32. P2146, L13-14. (The sensitivity of SWE : : :). This conclusion would most likely
10 be reversed if you considered relative rather than absolute SWE changes.

11 **Answer:** Thank you for your suggestion. Here we want to analyze the response of
12 SWE to temperature, and we therefore only calculate the slope of SWE to
13 temperature during a given period. This is unrelated to the relative change or absolute
14 change.

15

16 33. P2146, L25. (This pattern shows: : :). Delete the sentence.

17 **Answer:** Thank you for your suggestion. This sentence has been deleted in the
18 revised manuscript.

19

20 34. P2146, L21 – P2147, L21. Maps for the annual mean SWE change were already
21 shown in Fig. 3. The only piece of substantially new information in Fig. 7 is the
22 seasonal distribution. Thus, there is no need for a lengthy discussion of the annual
23 mean trends.

24 **Answer:** Thank you for your suggestion. We have deleted this section in the revised
25 manuscript.

26

27 35. P2148, L1-2. This suggests a shift in the seasonality of the SWE, with the
28 maximum occurring earlier in a warmer climate. This is physically expected, because
29 the maximum of SWE in spring occurs close to the time when the mean temperature
30 rises above zero, and the zero-crossing time becomes earlier when the climate warms.

1 **Answer:** Thank you for your suggestion. As the climate warms, snow begins to melt
2 earlier, which leads to a significant reduction in SWE during spring.

3

4 36. P2148, L11-15. This behaviour follows the rate of global temperature change
5 reported in IPCC AR5 (Chapter 12).

6 **Answer:** Thank you for your suggestion. We now refer to this relationship by citing
7 Zhu et al. (2013) (page 22, L22-23).

8

9 37. P2148, L18-20. Instead of calculating the regression coefficients within the
10 20-year periods, one could infer the temperature-dependence of SWE simply by
11 comparing the different periods and RCP scenarios with each other. This would allow
12 more reliable conclusions, because a larger range of temperatures is covered and
13 long-term climate change is not confounded with internal variability. Looking at
14 Figure 9 (particularly 9c) from this perspective, it seems that SWE decreases more or
15 less linearly with temperature for $T > 5.5\text{C}$. On the other hand, there is an abrupt
16 jump at 5.5C (i.e., between the historical simulations and the RCP simulations)
17 which suggests a problem in the model data or processing of these data. Moreover,
18 for each of RCP2.6, 4.5 and 8.5, the regression coefficients calculated from the
19 interannual variability are larger in MP and LP than EP. In all, this suggests that the
20 purported decrease in the rate of SWE decrease with increasing temperature is
21 questionable.

22 **Answer:** Figure 9 has been deleted in the revised manuscript and we have reanalyzed
23 the effect of total precipitation, the fraction of solid precipitation, and the fraction of
24 accumulated snowfall on SWE in the revised manuscript (page 25, L4-18).

25

26 38. P2148, L23-25. Yes, but (i) the slopes for each of the three RCP scenarios are
27 smaller in EP than MP and LP, and (ii) the apparent discontinuity in the mean value
28 between the RP and the later periods raises the question whether the regression
29 coefficients are actually comparable.

30 **Answer:** Thank you for your suggestion. This has been deleted in the revised

1 manuscript.

2

3 39. P2149, L6-7. This claim contradicts the regression coefficients in Fig. 9 (-1.49
4 for EP, -1.68 for MP, -1.81 for LP).

5 **Answer:** Thank you for your suggestion. This has been deleted in the revised
6 manuscript.

7

8 40. P2149, L20-22. This precisely follows the scenario and time dependence of
9 temperature changes.

10 **Answer:** Thank you for your suggestion. We have rewritten this section in the revised
11 manuscript (page 26, L9-12).

12

13 41. P2149, L24-26. A physically more convincing argument: as winter precipitation
14 in snow-covered areas is simulated to increase, the increase in temperature is the only
15 factor that can lead to a decrease in SWE.

16 **Answer:** Thank you for your suggestion. It is true that increased precipitation in
17 winter causes SWE to increase, and increased temperature can lead to a decrease in
18 SWE. Under the effects of both temperature and precipitation, SWE tends to decrease,
19 and this indicates that increased winter precipitation cannot compensate for the
20 increase in snowmelt due to rising temperatures. Therefore, temperature is the major
21 driving factor underlying changes in SWE.

22

23 42. P2150, L1. In mid-to-high-latitude areas, the largest increase in precipitation (at
24 least in per cent terms) is projected for winter.

25 **Answer:** Thank you for your suggestion. We have rewritten this section using relative
26 changes to show that the greatest increase in precipitation actually occurs in winter.

27

28 43. P2150, L3-5. Use of relative rather than absolute SWE changes would reverse
29 this latitude dependence.

30 **Answer:** Thank you for your suggestion. We have replaced the absolute change with

1 relative change, and revised the manuscript accordingly (page 27, L2-6).

2

3 44. P2150, L7-9. As noted above: Figure 9 does not seem to support this conclusion
4 for the Northern Hemisphere as whole. In any case, such threshold behaviour would
5 be more meaningfully studied in a regional than a Northern Hemisphere mean sense.

6 **Answer:** Thank you for your suggestion. Figure 9 has been deleted in the revised
7 manuscript.

8

9 45. Tables 2 and 3. The number of numeric values in these tables is excessive.
10 Condensation is needed. Either only show the results for RP and LP, or RP and only
11 RCP8.5 in the three periods. Nothing more is needed, because the
12 temperature-dependence of the correlations and regression coefficients (if there is any)
13 should be captured by these cases. In addition to this, consider displaying the
14 numbers in figures, instead of tables.

15 **Answer:** Thank you for your suggestion. We want to show the relationships between
16 SWE and temperature during different periods and RCPs. Thus, Tables 2 and 3
17 provide valuable information in support of this analysis.

18

19 46. Figure 3. Please also show the changes in per cent units at least for the last period.
20 Alternatively, show per cent changes for all three periods and absolute changes only
21 for 2080-2099.

22 **Answer:** Thank you for your suggestion. In fact, Figure 3 shows the relative changes
23 in SWE for three scenarios during three periods. We have revised the manuscript
24 accordingly.

25

26 47. Figure 4. Delete the first column, because of the reason discussed in General
27 comment 4.

28 **Answer:** Thank you for your suggestion. We have deleted this in the revised
29 manuscript.

30

1 48. Figure 5. Why are the numeric values much smaller than those shown in Fig 2?
2 Were the averages calculated over a different area?

3 **Answer:** The area and time periods differ between Figures 2 and 5. Figure 5 shows
4 the average SWE over the NH where snow exists during 1986–2005, whereas Figure
5 2 shows the average SWE over non-mountainous regions of the NH during
6 1980–2005.

7

8 49. Figure 6. Please define the area over which the changes were averaged

9 **Answer:** Thank you for your suggestion. The average is calculated over regions
10 where snow exists.

11

12 50. Figure 7. Show the trends in per cent units instead of / in addition to the absolute.

13 **Answer:** Thank you for your suggestion. Figure 7 in the original manuscript has been
14 deleted in the revised manuscript.

15

16 **TECHNICAL COMMENTS**

17 1. The following studies are cited in the text but are not included in the list of
18 references: Brown and Mote (2009), Christensen et al. (2007), Lemke et al. (2007),
19 Maloney et al. (2012).

20 **Answer:** Thank you for your suggestion. We have added these references
21 (Christensen et al. (2007) is not used) to the reference list in the revised manuscript

22

23 2. P2138, L27. Apparently, Räisänen (2011) should be either Räisänen (2008) or
24 Räisänen and Eklund (2011).

25 **Answer:** Thank you for your suggestion. We have revised this in the manuscript
26 (page 6, L10).

27

28 1. P2140, L24. "stimulation" should be "simulation"

29 **Answer:** Thank you for your suggestion. We have revised this in the manuscript
30 (page 10, L4).

1

2 2. P2141, L1. "the most individual model" should be "most of the individual
3 models".

4 **Answer:** Thank you for your suggestion. We have revised this in the manuscript
5 (page 10, L10).

6

7 3. P2141, L15. Apparently, "relative-error ratio" (RE) means relative change.

8 **Answer:** Thank you for your suggestion. RE is actually the relative change, and we
9 have give explanation in the revised manuscript (page 9, L1-2).

10

11 4. P2159, caption of Figure 2. "stimulated" should be "simulated"

12 **Answer:** Thank you for your suggestion. We have revised this in the manuscript.

13

1

2

Reply to RC C507

3

4

We thank the reviewer for the valuable comments and suggestions. We have revised the paper substantially and have carefully made corrections according to the reviewer's comments. Our detailed point-by-point response to the reviewer's comments is given below.

8

9 1. P2140, lines 14-20. How are spatial correlations calculated? These values are
10 very sensitive to autocorrelation in the residuals, which is undoubtedly a problem in
11 the snow cover field. Also, in the statement "by comparison", it is not clear what is
12 being compared, and why or how the results are different. P2146 lines 1-5 the authors
13 discuss correlations and partial correlations. Are these performed on detrended time
14 series? How do the trends affect these results, and do they result in autocorrelation in
15 the residuals which contradicts one of the assumptions of regression analysis? Also,
16 throughout the manuscript the authors focus on absolute rather than relative changes
17 in SWE, but never explain the advantages/disadvantages of evaluating relative versus
18 absolute changes. By choosing to evaluate absolute changes, one skews results to
19 areas with much more snow.

20 **Answer:** Thank you for your suggestion. We ordered all simulation grids and
21 observations in sequence, and then calculated the spatial correlations. The term "by
22 comparison" indicates the comparison of the correlation and standard deviation ratios
23 across space and time, and we have deleted this in the revised manuscript to avoid
24 confusion. The time series were not detrended for the correlation and partial
25 correlation calculations. In the revised manuscript, the spatial, zonal, and monthly
26 changes in SWE are analyzed in terms of the relative change (Figure 3, 4, 5).

27

28 2. P2145, lines 8-9, "the reduction in SWE during the winter half-year exceeds that
29 in the summer half-year, in keeping with the results shown in Fig. 3." Since there is
30 so much more snow in winter than summer, is this a trivial statement? Also, winter

1 half-years and summer half-years are never defined. P2145, lines 26-27, the result
2 “This pattern implies that decreasing SWE is attributable to increasing temperature
3 and the minor increase in precipitation” requires explanation. Another example is the
4 recurring mention of a threshold value at which the rate of SWE reduction decreases
5 over time throughout the 21st century: no explanation is provided, in terms of
6 whether this local or global, based on the freezing point of water, or based on some
7 other physical principal.

8 **Answer:** Thank you for your suggestion. Lines 8–9 have been deleted in the revised
9 manuscript. The winter half-year ranges from December to May, and the summer
10 half-year is from June to November.

11 In lines 26–27, we state that both temperature and precipitation show an
12 increasing trend. A temperature increase leads to a reduction in SWE, and a
13 precipitation increase causes SWE to increase. However, warming will also result in a
14 decrease in winter snowfall and more efficient snowmelt. Therefore, the change in
15 SWE is related to increasing temperature and precipitation. This is clearly explained
16 in the revised manuscript (page 15, L2-10).

17 The threshold refers to the relationship between SWE and temperature.
18 According to the response sensitivity of SWE to temperature during the three periods
19 of the 21st century, a threshold may exist in the SWE–temperature relationship,
20 however, in the revised manuscript we have deleted this section.

21

22 3. Throughout the manuscript one finds confusing references to CMIP experiments
23 and IPCC experiments. The discussion sometimes refers to CMIP and sometimes to
24 the IPCC AR number. For example, P2144 line 14 says that their results are different
25 than AR5 (Stocker et al., 2013). Aren’t the authors using the same models as Stocker
26 et al.? if so, how can the results be different? This requires clarification, and further
27 explanation. Also, p. 2145 line 15 “which is consistent with the results in AR5.” If
28 this is just a repeat of what has already been done for AR5, why is it of interest?

29 **Answer:** Thank you for your suggestion. In AR5, the results are based on reanalysis
30 over the Northern Hemisphere during 1922–2012. By comparison, we suggest that

1 the correlation between snow and temperature during different periods of the 21st
2 century is stronger than that during 1922–2012. P. 2145 line 15 in the revised
3 manuscript has been deleted.

4

5 4. Clarity of presentation is a problem even in the introduction. First, in defining the
6 questions asked in this manuscript (P. 2139, lines 6-7). How is question 2 different
7 than question 1? Also, the phrasing of question 2 is entirely vague (“How about the
8 link: :”). Second, the authors must clarify (for example on p. 2139, lines 9-16) how
9 this study complements previous studies of CMIP5 snow simulations.

10 **Answer:** Thank you for your suggestion. Problem 1 mainly focuses on the change in
11 SWE on different spatial and temporal scales. Problem 2 refers to the relationships
12 between SWE and temperature, and between SWE and precipitation during the 21st
13 century. The “link” indicates the relationship between SWE and temperature, we
14 have explained in the revised manuscript (page 6, L30 – page 7, 3). Furthermore,
15 previous studies that employed CMIP5 snow simulations are discussed in the revised
16 manuscript (page 5, L1-10). We want to analyze the mechanisms that underlie the
17 change in SWE according to the contribution of total precipitation, the fraction of
18 solid precipitation, and the fraction of accumulated snowfall (page 25, L4-18).

19

20 **SPECIFIC COMMENTS**

21 1. Abstract, p2136, lines 10-13. Run-on sentence, should be split into two sentences

22 **Answer:** Thank you for your suggestion. We have revised this point in the
23 manuscript (page 1, L28- page 2, L4).

24

25 2. p. 2137, lines 15-18. Define what is meant by snow cover.

26 **Answer:** Thank you for your suggestion. Snow cover represents a spatially and
27 temporally integrated response to snowfall events, and exhibits a more direct
28 relationship to temperature (page 4, L6-8).

29 3. p. 2137, line 27, “shown” should be “show”

30 **Answer:** Thank you for your suggestion. We have revised this in the manuscript

1 (page 5, L2).

2

3 4. p. 2138, line 16, should “except” be changed to “in addition to”? “Topography”
4 should not be capitalized.

5 **Answer:** Thank you for your suggestion. This section has been deleted in the revised
6 manuscript.

7

8 5. p. 2138, line 20. What is meant by “simulated SWE actually increase with
9 altitude”? the discussion is about rates of change, and the relevance of this statement
10 is unclear.

11 **Answer:** Thank you for your suggestion. We have rewritten the introduction and this
12 section has been deleted in the revised manuscript.

13

14 6. p. 2141, line 15. Define “relative-error ratio”.

15 **Answer:** Thank you for your suggestion. The “Relative-error ratio” is actually the
16 relative change, calculated by the equation $\frac{S_i - O_i}{O_i} \times 100\%$, where S_i and O_i are the
17 simulation results and observations, respectively, we have added the equation in the
18 revised manuscript(page 9, L1-2).

19

20 7. p. 2141, line 23-24, what is meant by “the extent of increased springtime SWE”?

21 **Answer:** Thank you for your suggestion. The extent of increased springtime SWE is
22 the area of positive relative change (RE>0) (page 11, L16).

23

24 8. P. 2143, lines 9-11. Regarding the unique difficulty of simulating snow over the
25 Tibetan plateau, this requires further explanation and some reference to the literature
26 on this issue.

27 **Answer:** Thank you for your suggestion. This has been deleted because the annual
28 maximum SWE is not discussed in the revised manuscript.

29

1 9. 2145, line 6, what is meant by “integration cumulative errors”?

2 **Answer:** Thank you for your suggestion. Due to the difference in physical processes
3 and the algorithm, cumulative errors will be greater later in the 21st century. However,
4 this has been deleted in the revised manuscript.

5

6 10. p. 2146, line 14. “form” should be “from”

7 **Answer:** Thank you for your suggestion. We have deleted this in the revised
8 manuscript.

9

10 11. p. 2146, lines 14-19. Does this paragraph, which says that the sensitivity of
11 SWE to temperature gradually increases during the 21st century, contradict previous
12 statements?

13 **Answer:** Thank you for your suggestion. This does not contradict the previous
14 statement. Table 2 shows that the sensitivity of SWE to temperature gradually
15 increases from south to north at mid–high latitudes. This trend indicates that the most
16 significant absolute change in SWE occurs at high latitudes, where the temperature
17 increase is also significant.

18

19 12. p. 2147 line 27 – p. 2148 line 2. This is unclear and confusing.

20 **Answer:** Thank you for your suggestion. The spatial changes in SWE show that the
21 magnitude and extent of the negative SWE trend are more significant in spring than
22 in winter. However, positive changes in spring are less significant than in winter,
23 which leads to a more significant reduction in spring than in winter. We have
24 rewritten the manuscript to clarify this result (page 22, L25-30).

25

26 13. p. 2150, lines 21-24 (last sentence of manuscript). The meaning and relevant of
27 integration truncation and intermodal differences is not explained, was not previously
28 mentioned, and is therefore confusing.

1 **Answer:** Thank you for your suggestion. Physical processes and the algorithm (i.e.,
2 intermodal differences) may result in uncertainty. Here we only want to state that the
3 uncertainty does not affect the overall conclusions of this study.

4

5 14. Figure 1, explain the axes, figure 2 specify which months are included.

6 **Answer:** Thank you for your suggestion. In Figure 1, the vertical axis indicates the
7 standard deviation ratios, and the numbers along the arc are the spatial correlation.
8 Figure 2 shows the winter (DJF) mean SWE. We have revised in the manuscript to
9 clarify these figures.

10

11 15. Figure 6, 7. For what region is this? I assumed the entire Northern Hemisphere.

12 **Answer:** Thank you for your suggestion. The region is the Northern Hemisphere
13 landmass where snow exists.

14

15 16. Figure 8. Cannot see range of results for all three scenarios.

16 **Answer:** Thank you for your suggestion. Due to model uncertainty, the simulated
17 error gradually increases later in the 21st century, especially under higher-emission
18 scenarios. Therefore, the ranges in model results for lower-emission scenarios are
19 covered by the higher emission.

20

1
2
3 | 21st century changes in snow water equivalent over
4 Northern Hemisphere landmasses due to increasing temperature,
5 | projected with the CMIP5 models
6

7
8 By

9
10 H. X. Shi and C. H. Wang

11
12
13 Key Laboratory of Arid Climate Change and Disaster Reduction of Gansu Province,
14 College of Atmosphere Science, Lanzhou University, Lanzhou, China, 730000
15

16
17 Changes in snow water equivalent (SWE) over Northern Hemisphere (NH) landmasses
18 are investigated for the early (2016–2035), middle (2046–2065) and late (2080–2099)
19 21st century using twenty global climate models, ~~which are~~ from the Coupled Model
20 Intercomparison Project Phase 5 (CMIP5). ~~The results show that, relative to the~~
21 ~~1986–2005 mean, T~~he multi-model ensemble projects a significant decrease in SWE for
22 most regions relative to the 1986–2005 mean under three Representative Concentration
23 Pathways (RCP). This decrease is particularly evident~~particularly~~ over the Tibetan
24 Plateau and western North America, whereas ~~but~~ an increase occurs over~~in~~ eastern
25 Siberia. Seasonal SWE projections show an overall decreasing trend, with the greatest
26 reduction in spring, which is linked to the stronger inverse partial correlation between the
27 SWE and increasing temperature. The largest relative reduction in SWE over the NH
28 does not occur in spring but in summer. ~~Moreover,~~ Zonal mean annual SWE exhibits

1 significant reductions ~~for in RCPs~~three Representative Concentration Pathways(RCP),
2 and the magnitude of the reduction gradually decreases with latitude in the NH from south
3 to north. A stronger linear relationship between SWE and temperature at mid-high
4 latitudes suggests the reduction in SWE there is related to rising temperature. As
5 temperature increases, the reduction in the fraction of solid precipitation becomes the
6 main contributor to the change in SWE from August to May in the next year in the 21st
7 century, and after May the reduction in SWE is controlled primarily by the decrease in
8 accumulated snowfall. In summary, our results show a trend towards decreasing SWE,
9 and the decreases in solid precipitation and accumulated snowfall strongly affect the
10 change in SWE before and after May, respectively. However, the rate of reduction in SWE
11 declines gradually during the 21st century, indicating that the temperature may reach a
12 threshold value that decreases the rate of SWE reduction. A large reduction in zonal
13 maximum SWE (ZMSWE) between 30° and 40°N is evident in all 21st century for the
14 three RCPs, while RCP8.5 alone indicates a further reduction at high latitudes in the late
15 period of the century. This pattern implies that ZMSWE is affected not only by a terrain
16 factor but also by the increasing temperature. In summary, our results show both a
17 decreasing trend in SWE in the 21st and a decline in the rate of SWE reduction over the
18 21st century despite rising temperatures.

19 **Key words:** Coupled Model Intercomparison Project (CMIP5); Snow Water Equivalent
20 (SWE); Model assessment and projection; Sensitivity

21

1 Introduction

~~Snow is As~~ a key component of the cryosphere, ~~snow and~~ plays a fundamental role in global climate, due to its high albedo and cooling effect (Vavrus, 2007). However, ~~as global temperatures increase,~~ terrestrial snow cover in the Northern Hemisphere (NH) is changing rapidly alongside increasing global temperatures. According to the IPCC Fifth Assessment Report (AR5) (IPCC, 2013) NH snow cover extent decreased by 1.6 [0.8 to 2.4]% per decade for March and April, and by 11.7 [8.8 to 14.6]% per decade for June, during the period 1967–2012. Furthermore, the projections show a 7% decrease in the total area of NH spring snow cover for Representative Concentration Pathway (RCP) 2.6 and a 25% decrease for RCP8.5 by the end of the 21st century. This result is consistent with results from the IPCC Fourth Assessment Report (AR4) (IPCC, 2007). Projections of mean annual NH snow cover suggest a further 13% reduction by the end of the 21st century under the B2 scenario, with individual projections ranging from 9% to 17%; i.e., despite different emission scenarios, the change in snow cover over the NH land shows the same decreasing trend. According to the IPCC Third Assessment Report (TAR) (Houghton et al., 2001), the total area of snow-covered land in the NH has decreased by ~10% since the 1960s. Meanwhile, projections of mean annual NH snow cover suggest a further 13% reduction by the end of the 21st century under the B2 scenario, with individual projections ranging from 9% to 17% (Meehl et al., 2007). Furthermore, according to the IPCC Fifth Assessment Report (AR5) (Stocker et al., 2013), the total area of NH spring snow cover will decrease by 7% for Representative Concentration Pathway (RCP) 2.6 and by 25% for RCP8.5 by the end of the 21st century. From TAR to AR5, although the models' scenarios are different, the area of NH snow cover all represents a declined trend, owing to the fact that snow is highly sensitive to rising temperature.

~~Indeed, S~~ several studies have shown that marked decreases in the area

1 and/or depth of snow have already occurred in regions such as western North
2 America (Groisman et al., 2004; Stewart et al., 2005), central Europe (Falarz,
3 2002; Vojtek et al., 2003; Scherrer et al., 2004) and China (Ji et al., 2012;
4 Wang et al., 2012), thus highlighting the need for better projections of future
5 snow conditions.

6 Snow cover represents a spatially and temporally integrated response to
7 snowfall events (Brown and Mote, 2009), and may have a direct relationship
8 with temperature (Brutel-Vuilmet et al., 2013). Snow depth mainly reflects the
9 magnitude of precipitation (snowfall), whereas snow water equivalent (SWE)
10 primarily reflects the combined impact of temperature and precipitation
11 (Räisänen, 2008).~~The snow depth mainly represents the magnitude of~~
12 ~~precipitation (snowfall) (Räisänen, 2008), snow cover possibly exhibit a more~~
13 ~~direct relationship to temperature (Brutel-Vuilmet, 2013). However~~whereas,
14 snow water equivalent (SWE) primarily reflects the ~~common~~ combined impact
15 of temperature and precipitation on snow (Räisänen, 2008). According to AR5
16 (~~Stocker et al.~~ IPCC, 2013), ~~the~~ global temperature and precipitation will
17 ~~persistently~~ increase in the 21st century. The dependence of global warming
18 on the RCP emission pathway is weak for the next few decades but
19 strengthens rapidly towards the end of this century (IPCC, 2013). ~~Of primary~~
20 ~~concern is the way that SWE will respond to changes in temperature and~~
21 ~~precipitation. AR5 reported that SWE responds to both temperature and~~
22 ~~precipitation, and is more sensitive to the snowfall amount at the beginning~~
23 ~~and end of the snow season (IPCC, 2013).~~ in order to study the influence of
24 temperature and precipitation on snow, SWE is arguably the most effective
25 tool for assessing the hydrologic impact of snow cover variability (Bulygina et
26 al., 2009), owing to the large number of studies to date. For example, SWE
27 measurements from northwest North America were described by Clark et al
28 (2001) and have since been used by McCabe and Dettinger (2002) to improve
29 forecasting of seasonal streamflow. Following comparison with observational
30 data,

1 Global climate models consistently project declining SWE in many areas
2 by the end of 21st century, while some models show s an increase in
3 snowpack along the Arctic Rim by 2100 (Hayhoe et al., 2004; Brown and Mote,
4 2009). For example, a 20 km-mesh atmospheric general circulation model
5 projects decreased SWE over much of the NH, and increased SWE over
6 colder regions (Siberia and northernmost North America) due to increasing
7 snowfall during the coldest ~~seasons~~ months, ~~although the percentage change~~
8 ~~of SWE depend on geographical features~~ (Hosaka et al., 2005). Brutel-Vuilmet
9 et al. (2013) also indicated that the greatest relative reduction in maximum
10 SWE at low latitudes is related to decreasing snowfall. ~~Similarly, a regional~~
11 ~~climate simulation for North America reported increased March SWE in parts~~
12 ~~of Alaska and Arctic Canada, but decreasing values farther south (Christensen~~
13 ~~et al., 2007).~~

14 Räisänen (2008) suggested that changes in seasonal SWE by the end of
15 the 21st century will vary regionally and depend on local climate conditions.
16 ~~According to the Coupled Model Intercomparison Project Phase 3 (CMIP3)~~
17 ~~projections, changes in seasonal SWE by the end of the 21st century will be~~
18 ~~spatially variable, with much depending on present local climate conditions~~
19 ~~(Räisänen, 2008). For example, i~~ n very cold regions, for example, climate
20 warming will lead to greater winter snowfall, and thus a thicker snowpack,
21 whereas in warm regions, higher temperatures will result in reduced snowfall.
22 Similarly, CMIP5 experiments project declining SWE over North America south
23 of 70°N (concentrated over the Rocky Mountains, to southern Alaska, and the
24 eastern Canadian provinces), with maximum changes during the peak snow
25 season (January–April), and increasing SWE north of 70°N due to enhanced
26 precipitation (Maloney et al., 2012). Except the influence of climate factor on
27 SWE, Topography also influences variability in SWE. ~~In the mountainous~~
28 ~~regions of Europe and western North America, projected reductions in SWE~~
29 ~~are greatest at low elevations (Maloney et al., 2012).~~ SWE is generally
30 projected to decrease less with increasing altitude due to colder winter

1 ~~conditions, but decreases less with increasing altitude, owing to colder winter~~
2 ~~conditions,~~ while in some areas, simulated SWE actually increase with altitude
3 (Scherrer et al., 2004; Mote et al., 2005; Mote, 2006). ~~Namely, the changes in~~
4 ~~SWE vary with the altitude.~~

5 According to AR5 (Stocker et al. IPCC, 2013), anthropogenic warming will
6 continue beyond 2100 for all RCPs, ~~with the consequences of leading to an~~
7 ~~acceleration~~ ng of the water cycle and a changing ~~the~~ ratio of snowfall to
8 rainfall. Moreover, increased winter precipitation likely will be insufficient to
9 offset the greater contribution of liquid precipitation and enhanced snowmelt
10 driven by higher average temperatures (Räsänen and Eklund, 2011, 2014).
11 From TAR to AR5, projected linear trends in SWE under different scenarios
12 are highly variable since SWE is dependent both on the concentration of total
13 emissions and the duration of emissions.

14 The above studies show that changes in SWE generally depend on both
15 temperature and precipitation, but their relative contributions remain debated.
16 ~~Furthermore,~~ Several studies have concluded that increasing temperature
17 plays a major role in decreasing SWE (Lemke et al., 2007; Räsänen and
18 Eklund, 2011), whereas other studies indicate that increasing SWE is mainly
19 related to increasing precipitation (Hosaka et al., 2005; Maloney et al., 2012).
20 Räsänen (2008) suggested that changes in SWE depend on the competing
21 influences of temperature and precipitation; i.e., an increase in precipitation, if
22 acting alone, would lead to an increase in snowfall and consequently to
23 increased amounts of snow on ground, while an increase in temperature alone
24 would reduce the fraction of precipitation that falls as snow and increase snow
25 melt. ~~SWE variability can be attributed to either increasing precipitation~~
26 ~~(Hosaka et al., 2005; Maloney et al., 2012) or temperature (Lemke et al., 2007;~~
27 ~~Räsänen, 2011), while Räsänen (2008) suggested that the cryospheric~~
28 ~~response depends on the balance between increasing temperature and~~
29 ~~precipitation.~~ Consequently, ~~our~~ the present study was motivated by the need
30 to address the following questions: (1) ~~Throughout the NH scale,~~ how will NH

1 SWE respond to the different RCPs ~~projected for~~in the 21st century? (2) How
2 will the relationships between SWE and temperature, and between SWE and
3 precipitation change during different periods of the 21st century?~~about the link~~
4 ~~between SWE and climate change?~~

5 To further analyze anticipated changes in SWE, we employed output
6 from the CMIP5 models in conjunction with GlobSnow product. ~~Here,~~We
7 focus primarily on temporal and spatial changes in SWE and on variations in
8 the relationship between SWE and climate for each RCP ~~during different~~
9 periods of ~~in the~~ 21st century. The specific datasets used in this study are
10 described in Section 2, and the simulated and observed data are compared
11 ~~and the comparison between simulated and observed dataset are given~~ in
12 Section 3. Temporal and spatial characteristics of SWE are projected and
13 analyzed in Section 4, and the relationships s between SWE and climate
14 change are discussed in Section 5. The key findings of the study~~The main~~
15 results are summarized in Section 6

16 2 Datasets

17 To objectively quantify the changes of SWE in the 21st century, we
18 examined 20 models participating in CMIP5 (Table1), those models ~~—~~all
19 provide monthly SWE ~~variable~~ in ~~the~~ historical experiment and three scenarios
20 experiments (RCP2.6, RCP4.5 and RCP8.5), and we only use the first
21 ensemble member produced by each model (e.g., r1i1p1). While these
22 models vary in their forcing parameters, each model includes ~~the~~ an increases
23 in major anthropogenic aerosols observed during ~~the~~ 1850-2005 and
24 anticipated for the future scenarios. Further details ~~are given~~ can be found at
25 <http://www-pcmdi.llnl.gov>.

26 The model simulations ~~of the models~~ cover the periods 2006–2099 and
27 2006–2300. Here, we describe changes in SWE during the former period,
28 which is divided into three segments~~sub-periods~~: the early (2016–2035: EP),
29 middle (2045–2065: MP) and late (2080–2099: LP) 21st century. The

1 analyses were conducted using a 1°×1° latitude–longitude grid, and
2 re-gridding of original model grids ~~to the analysis grids~~ was conducted via
3 bilinear interpolation.

4 To verify the performance of the CMIP5 models for simulating SWE, we
5 compared the CMIP5 output with the monthly SWE data from European Space
6 Agency (ESA) GlobSnow dataset (Takala et al., 2011). GlobSnow combines
7 SWE retrieved from passive microwave ~~observation~~ and weather station
8 observation. This is the most realistic SWE product currently available
9 (Hancock et al., 2013) because of the improved accuracy achieved by
10 assimilating independent sources of information ~~Because of the improved~~
11 ~~accuracy achieved by assimilating independent sources of information, this is~~
12 ~~a more realistic SWE product currently available (Hancock et al., 2013).~~ The
13 series cover the period of 1979-2010, ~~and the SWE data have~~ with a
14 resolution ratio of 25×25 km, and is also interpolated onto a common 1°×1°
15 grid. Hereafter, we refer to the GlobSnow dataset as the observed SWE.

16 In this paper, linear correlation coefficients, partial correlation analysis and
17 regression analysis are used to investigate the relation between model
18 simulations from different scenario experiments and observations. The
19 equations are as follows.

20 Partial correlation:

$$r_{XY,Z} = \frac{r_{XY} - r_{XZ}r_{YZ}}{\sqrt{(1 - r_{XZ}^2)(1 - r_{YZ}^2)}} \quad (1)$$

21 where $r_{xy,z}$ indicates the contribution of X to Y, after removing the
22 contribution of Z to Y.

23 Regression coefficient:

$$Y = b + at \quad (2)$$

24 where a represents the linear trend of factor Y with time t.

25 Relative-error ratio (RE):

$$RE = \frac{S_i - O_i}{O_i} \times 100\% \quad (3)$$

where RE reflects the change in a variable S relative to the baseline O .

Räsänen (2008) suggested that the change in SWE (ΔSWE) can be decomposed into four terms:

$$\Delta SWE = \underbrace{\bar{G} \int \bar{F} \Delta P dt}_{\Delta SWE(\Delta P)} + \underbrace{\bar{G} \int \Delta F \bar{P} dt}_{\Delta SWE(\Delta F)} + \underbrace{\Delta G \int \bar{F} \bar{P} dt}_{\Delta SWE(\Delta G)} + \underbrace{\frac{1}{4} \Delta G \int \Delta F \Delta P dt}_{\Delta SWE(NL)} \quad (4)$$

where the first three terms on the right represent the contribution from changes in total precipitation (ΔP), fraction of solid precipitation (ΔF) and the fraction of accumulated snowfall that remains on the ground (ΔG). $\Delta SWE(NL)$ is a non-linear combination of ΔG , ΔF and ΔP . P_1 is mean total precipitation during different periods of the 21st century, and P_0 is the mean total precipitation during 1986–2005. $\bar{P} = (P_0 + P_1) / 2$, $\Delta P = (P_1 - P_0)$, the definitions of $\bar{G}, \Delta G, \bar{F}, \Delta F$ can refer to $\bar{P}, \Delta P$

3 Validation of CMIP5 simulations for SWE

To evaluate the simulation performance of the models used in this study, we calculated spatial correlations and standard deviation ratios for the observed and simulated winter (DJF) mean SWE (Figure 1). ~~We found that each simulated SWE from each model exhibits a strong~~ close spatial correlation ($P < 0.05$) with ~~the~~ observations, and ~~the majority of most~~ standard deviation ratios are close to one. ~~By comparison, most existing models have less robust correlations and lower standard deviation ratios with the observed data in the time series from 1980 to 2005. However, These results indicate that the models can reproduce the spatial characteristics of SWE. Furthermore, the multi-model ensembles can evidently improve simulation the performance, which and has~~ better correlation and standard deviation ratios than ~~the~~ most individual model. ~~In addition, Fig.2 shows~~ both the observed

1 and the simulated ~~averaged mean~~ winter ~~mean~~ SWE over ~~the Northern~~
2 ~~Hemisphere~~NH land ~~covered by the GlobSnow data. is also shown in Fig. 2.~~
3 The observed ~~average mean~~ winter ~~mean~~ SWE over ~~the northern~~
4 ~~Hemisphere~~NH is 71.6 kg m^{-2} , while the stimulation ranges from 61.0 to 111.3
5 kg m^{-2} . ~~The RE ranges from -20.3% to 55.4%. Significantly, M~~most models
6 overestimate SWE, and only five models (CanESM2, CSIRO-Mk3-6-0,
7 HadGEM2-ES, MPI-ESM-LR, MPI-ESM-MR) underestimate SWE, with a RE
8 of -20% to -0.4%. ~~compared with the observation, However, and~~ the
9 multi-model mean is 80.8 kg m^{-2} , which is closer to ~~the~~ observation than ~~the~~
10 most of the individual model. This illustrates that the multi-model ensemble is
11 more effective for simulating changes in SWE than individual models. From
12 here on, all simulation values ~~denote are from~~ the multi-model means, and we
13 take the period of 1986-2005 from the in-historical experiment (1850-2005) as
14 the reference period.

15 **4 Changes in SWE in the 21st century**

16 ~~In order T~~to project future spatial and temporal SWE patterns, we analyze
17 three simulatons ~~of SWE change, we analyze simulations for the three RCPs~~
18 (RCP2.6, RCP4.5, RCP8.5) ~~on temporal and spatial scales.~~

19 **4.1 Spatial changes in SWE for ~~the~~ three RCPs**

20 ~~General patterns of P~~projected spatial changes in SWE relative to
21 1986-2005 (RP) for the three periods of the 21st century are shown in Fig. 3.
22 ~~Relative to the reference period 1986-2005 (RP), The~~ mean annual SWE
23 declines over much of the NH for all the RCPs, with the greatest changes
24 occurring over the Tibetan Plateau (TP); the multi-model mean decrease in
25 SWE exceeds 80% in the western TP. The only regions ~~Only where a weak~~
26 increase in SWE (RE < 20%) is observed are ~~in~~ eastern Russia and Siberia
27 ~~does a weak increase in SWE occur.~~ Over North America, above north of
28 60°N , we observed there is a pronounced reduction in SWE during the LP for
29 RCP8.5; with an relative error ratios (RE) that rangs ing from -40% to -10%.

1 ~~and from -20% to -10%~~ For both RCP2.6 and RCP4.5, the RE ranges from
2 -20% to -10%. ~~In contrast, i~~ In eastern Siberia, the RE ~~increases to~~ is from
3 10% to ~20% for RCP8.5, while for both RCP2.6 and RCP4.5 the RE is ~~less~~
4 ~~than~~ 10%. This distribution suggests that the magnitude of the SWE decrease
5 (increase in Siberia) gradually becomes larger with time and with higher
6 emissions. ~~This pattern suggests that, as emissions rise, the intensity of~~
7 ~~decreased or increased SWE both increases.~~ ~~Meanwhile, we note that the~~
8 ~~decline in SWE is greater during the LP than during the EP and MP for the~~
9 ~~same emission scenario.~~

10 The changes in SWE in winter and spring (not shown) ~~Simulations of mean~~
11 ~~annual SWE~~ show a similar pattern to ~~those that~~ of mean annual SWE, winter
12 and spring (not shown). ~~For example, i~~ In springtime, for example, the RE of
13 ~~SWE~~ is between -20% and -10% over northern North America and ranges
14 from -40% to -20% over most of Europe. In Siberia, the multi-model mean
15 increase in SWE exceeds 10%. ~~Over the whole NH, t~~ The extent of increased
16 springtime SWE (RE > 0) is comparable to that ~~basically the same as that~~ in
17 winter and for the annual mean. Nonetheless, the magnitude of decline of
18 SWE in spring exceeds that in ~~other seasons~~ winter so that, ~~resulting that~~ the
19 decrease ~~of in~~ SWE in spring is the most significant than that in winter.

20 As global temperatures rise, the projected reduction in SWE is most
21 pronounced along the southern limits of seasonal snow cover. This is
22 pParticularly apparent over the TP, ~~where is the~~ unique cold, high-altitude
23 region ~~in the mid-latitude NH~~ (Fig. 3), where the increase in temperature is
24 more rapid than in other mid-latitude areas (Liu, 2000; Chen, 2006; Wang et
25 al., 2012). atmospheric warming serves to accelerate snowmelt and reduce
26 total snowfall amounts ~~(Raisänen, 2008).~~

27 ~~To investigate the zonal changes in SWE,~~ Figure 4 illustrates the relative
28 zonal changes in mean annual SWE, precipitation and the absolute change in
29 temperature and maximum SWE and temperature derived from the
30 multi-model simulations mean for the three periods of the 21st century. For all

带格式的：制表位： 33.08 字符，
左对齐

1 variables, the temporal trends in the multi-model mean are roughly similar in
2 different RCPs during the same period. However, the magnitude of changes in
3 mean annual SWE, precipitation and temperature increase with emissions
4 (RCP) and with time.

5 The decrease in SWE is small in the 60–70°N latitude band for all three
6 RCPs throughout the 21st century (RE < 30%), and the magnitude of decrease
7 in SWE gradually declines from south to north (north of 60°N), namely, the
8 largest relative reduction in SWE occurs at the low latitude. However, the
9 largest absolute change in SWE (not shown) appears in the high latitudes
10 (70–80°N). Relative to the RP, the magnitude of reduction in NH SWE
11 gradually increases over time with increased emissions. During the LP, the
12 absolute decrease in SWE reaches –28.0 kg m⁻² for RCP2.6, –55.7 kg m⁻² for
13 RCP4.5 and –77.6 kg m⁻² for RCP8.5.

14 Figure 4 d–f shows that ~~Relative to RP, the projected temperature~~
15 ~~increase by the end of the 21st century will not exceed 2°C for the lower~~
16 ~~emissions pathway (RCP2.6) (Stocker et al., 2013). However, as indicated by~~
17 ~~Fig. 4 (c, f, i),~~ temperatures will increase more rapidly at high latitude than at
18 lower latitude. AR5 also shows that anthropogenic warming will be more
19 pronounced at high latitudes (IPCC, 2013). The temperature increase is
20 greater over time and with higher emissions (RCP), and temperature
21 increases more rapidly in the 50–60°N latitude band than in other areas. The
22 temperature increase does not exceed 2°C in RCP2.6 by the end of the 21st
23 century, which is in agreement with the results of AR5 (IPCC, 2013). Similarly,
24 a greater increase in precipitation occurs in tropical and high-latitude regions
25 during the EP, MP and LP for all three RCPs (Figure 4g–i). The minimum
26 increase in precipitation occurs in the 30–40°N latitude band, which is likely
27 related to the fact that most arid regions in the NH are located in this region.
28 During the EP, relative changes in precipitation are the same for all three
29 RCPs, but these grow larger with time and increased emissions. During the LP,
30 the increase in precipitation exceeds 30% for RCP8.5 at high-latitudes

1 (70–80°N) whereas changes for the mid–low emission scenarios (RCP2.6,
2 RCP4.5) are generally less than 20%. Viewed in greater detail, the model
3 results are similar for all three RCPs during the EP, but diverge during the MP
4 and LP. The maximum simulated increase in temperature occurs at high
5 latitude during the LP for RCP8.5.

6 For all three RCPs, the simulations of mean annual SWE exhibit a clear
7 decline throughout the 21st century (Figure 4 b, e, h), with the greatest
8 reductions occurring at high latitudes (~70–80°N). Relative to RP, the decline
9 in low latitude SWE during the EP is minor (~ 10 kg m⁻²) for all three RCPs,
10 and the magnitude of the decline rises with increasing latitude. In contrast, the
11 magnitude of the decline in SWE reaches 30 kg m⁻² between 70 and 80°N in
12 each of the three RCPs in EP. While the zonal change in mean annual SWE is
13 highly dependent on RCPs during the MP and LP, particularly at higher
14 latitudes. South of 60°N, the relative changes in SWE during the MP are
15 similar for all three RCPs. However, between 70° and 80°N, the decrease in
16 SWE is 36 kg m⁻² for RCP2.6, 44 kg m⁻² for RCP4.5, and 55 kg m⁻² for
17 RCP8.5. Moreover, the reduction in SWE is more pronounced in the LP than
18 during the EP and MP, particularly for RCP8.5. We note that the maximum
19 increase in temperature and decrease in SWE both occur at high latitudes,
20 suggesting a potential relationship between decreasing SWE and increasing
21 temperature for different RCPs.

22 Figure 4 (a, d, g) illustrates an intriguing pattern of zonal maximum SWE
23 (ZMSWE) variability. Relative to RP, the ZMSWE exhibits a general decline for
24 all RCPs over the course of the 21st century. However, the ZMSWE shows a
25 similar pattern for the three RCPs during the EP and MP, while the amounts of
26 decline become highly variable during the LP for the three RCPs. This pattern
27 suggests that the change in ZMSWE depends not only on RCP but also on the
28 different periods (e.g., EP, MP, LP). In contrast, a large reduction in ZMSWE
29 occurs between 30° and 40°N for all three RCPs during the EP, MP and LP,
30 and is potentially linked to the strong reduction in SWE over the TP (Figure 3).

1 As the only cold, high altitude region in the mid-latitude NH, the unique
2 topographic and cryospheric effects of the TP may have affected the
3 performance of model simulations in this region. Nonetheless, we note the
4 modeled output generally captured the main features of the observations
5 (Figure 1).

6 We also note that a second, larger decline in ZMSWE occurs at 60–70°N
7 during LP for RCP8.5, this change always accompanies with the amplified
8 warming at the high latitudes, and the magnitude of this decline in SWE is
9 greater than that at 30–40°N. But this result disagrees with the findings of
10 Brutel Vuilmet et al. (2008), who suggested that the relative reduction in
11 ZMSWE would be greatest at lower altitudes (20–30°N). According to that
12 study, the low-latitude decline in ZMSWE is driven by strong snowfall
13 reduction, and the changes are weak farther north despite the stronger
14 warming (Brutel Vuilmet et al., 2008). Other studies also argue that the most
15 significant decrease in ZMSWE occurs at low elevation in mountainous
16 regions (e.g., Maloney et al., 2012); however, the present results in this study
17 show that the significant change in ZMSWE may also occur at higher
18 elevations (e.g., the TP).

19 As shown in Figure 4 g, the magnitude of the decrease in ZMSWE during
20 the LP for RCP8.5 is greater than for the two lower emissions pathways
21 (RCP2.6 and RCP4.5), particularly at higher latitude. This pattern also
22 indicates a role for temperature in driving changes in ZMSWE, with the
23 exception of the influence of elevation.

24 The above results show that both the relative and absolute changes in
25 SWE show a tendency to decline with time and with increased emissions. The
26 most significant relative reduction in SWE occurs at low latitudes, where snow
27 may gradually disappear with the temperature increasing in the 21st century.
28 Another significant relative and absolute change in SWE occurs in the Arctic,
29 where significant temperature and precipitation increases are projected. This
30 result indicates that decreasing SWE will likely lead to acceleration of the

1 hydrologic cycle.

2 In general, precipitation increases will lead to an increase in SWE,
3 however, at high latitudes SWE does not increase alongside increased
4 precipitation in all RCPs and periods (Figure 4), which indicates that the
5 decrease in SWE is governed by temperature. However, the Arctic (north of
6 70°N) is characterized by significant increases in temperature and
7 precipitation, and a significant decrease in SWE. This result suggests that the
8 fraction of accumulated snowfall that remains on the ground (snow cover) will
9 decrease, and it reflects the non-linear relationships between temperature and
10 precipitation and accumulated snowfall.

11 To analyze the relationships between the decrease in SWE and the
12 increase in temperature, Table 2 shows slopes of the regression between
13 projected interannual SWE and temperature, and the correlation coefficients
14 for SWE and temperature at different latitude bands in the three RCPs. During
15 the EP, linear relationships between SWE and temperature are significant in
16 all latitude bands, which illustrates that SWE decreases alongside increasing
17 temperature. There are also significant negative correlations between SWE
18 and temperature; i.e., increasing temperature leads to decreasing SWE.
19 However, for RCP2.6 this relationship is only observed in the EP, and not in
20 the MP and LP except in the 40–50°N latitude band. Similarly, for RCP4.5
21 there is significant negative relationship between SWE and temperature in the
22 EP. This relationship is observed north of 40°N in the MP, and gradually moves
23 northward, only occurring in the 40–60°N latitude band in the LP. Of note, a
24 significant negative relationship between SWE and temperature is observed in
25 RCP8.5 during all three periods.

26 A comparison of Figure 4 with Table 2 shows that although temperature is
27 a key factor in controlling SWE, the rate of the temperature increase is not the
28 same as the rate of the SWE decrease. In other words, SWE decreases in
29 response to a specific temperatures range.

30 According to AR5 (Stocker et al., 2013), anthropogenic warming will be

1 most pronounced at high latitude, and the temperature increase further leads
2 to changes in water exchange and the water cycle. Additionally, such
3 enhanced warming will influence the rainfall-to-snowfall ratio of winter
4 precipitation, potentially driving changes in snow cover and/or SWE. Table 2
5 shows projected changes in the zonal relationship between mean annual
6 SWE and temperature. Relative to RP, the rate of decline in mid-latitude SWE
7 will increase with rising temperature for the mid-low emissions pathways. In
8 contrast, the sensitivity of SWE to temperature gradually decreases from the
9 EP to the LP for RCP8.5, suggesting the rate of reduction in SWE might
10 decline as temperature increases beyond a certain level.

11 In AR4 (Meehl et al. IPCC, 2007), temperatures in the 40–60°N latitude
12 band were closely correlated with the area of springtime snow cover ($r=-0.68$).
13 This correlation increased to -0.76 in AR5 (Stocker et al. IPCC, 2013). The
14 present results support those findings, suggesting that the most significant
15 changes in SWE will occur at mid to high latitudes during winter and spring
16 (not shown). Furthermore, the correlation between SWE and temperature
17 during different periods of 21st century is stronger, even more than that
18 reported by AR5 (Stocker et al. IPCC, 2013), indicating that SWE at mid to high
19 latitudes will persistently decrease with the rising temperature.

20 4.2 Seasonal changes in SWE

21 Figure 5 depicts seasonal-monthly changes in monthly SWE and its
22 relative change (RE) averaged over the NH landmasses (excluding
23 Greenland) during different periods of the 21st century, the RP, EP, MP and LP.
24 The Mmulti-model ensemble simulations during the RP shows that simulations
25 during the RP are consistent with the observed SWE, reproducing reproduce
26 the basic features of monthly variation in observed SWE (GlobSnoe), with the
27 maximum values during in spring, and minimum values SWE during in
28 summer (not shown). These same features are evident in simulations of the
29 EP, MP, and LP for the three different RCPs (Figure 5a-c), although the main
30 difference being is that total SWE throughout the 21st century is lower than

带格式的：上标

1 during the RP.

2 amounts are lower than those during the RP. Figure 5 (b, d, f) shows
3 changes in SWE during the EP, MP and LP for all three RCPs, relative to RP.
4 For all three periods of the 21st century, the greatest decrease in SWE occurs
5 during spring, while the smallest reduction occurs in summer, contrary to the
6 pattern of monthly SWE change. The magnitude of the decrease in SWE is
7 similar for each RCP during the EP (Figure 5 b), that is, in the first 20 years of
8 21st century, the change in SWE relative to RP is the same in all three RCPs,
9 but differences among the RCPs are evident during the MP and LP (Figure 5 d,
10 f). During the LP, the maximum decline reaches -26.39 kg m^{-2} for RCP8.5,
11 while the values range from -13.85 to -17.45 kg m^{-2} for RCP2.6 and RCP4.5,
12 respectively. RCP has stronger effects on SWE change in LP than in EP and
13 MP, although the model uncertainty caused by integration cumulative errors is
14 enlarged from EP to LP. However, the simulation still basically reproduces the
15 features of SWE. Thus, regardless of RCP or time period, the reduction in
16 SWE during the winter half-year exceeds that in the summer half-year, in
17 keeping with the results shown in Figure 3.

18 Figure 5d-f shows changes (RE) in SWE during the EP, MP and LP for all
19 three RCPs relative to the RP. For all three periods of the 21st century, the
20 greatest decrease in SWE occurs during summer, while the smallest reduction
21 occurs in spring. In the first 20 years of the 21st century, the change in SWE
22 relative to the RP is the same in all three RCPs (Figure 5d), and differences
23 among the RCPs are more evident during the MP and LP (Figure 5e-f).
24 During the last period of the 21st century (LP), the maximum reduction in SWE
25 is 66.4% for RCP8.5, and ranges from 27.5% for RCP2.6 to 39.8% for RCP4.5.
26 In contrast, the largest absolute change in SWE appears in spring, with the
27 smallest decline in summer. The relative change in SWE is thus predicted to
28 be markedly different to the absolute change.

29 As the dominant parameters influencing SWE, temperature and
30 precipitation are the dominant parameters influencing SWE, and both exhibit

1 considerable changes in seasonality (Figure 6). Relative to the RP,
2 temperatures are projected to rise during the EP (Figure 6a), MP (Figure 6c)
3 and LP (Figure 6e) for all three RCPs, with the greatest warming occurring in
4 winter and the smallest in summer. The magnitude of the temperature change
5 increases with higher emissions over time. In the EP, the temperature increase
6 does not exceed 2°C for all three RCPs, and larger differences emerge during
7 the MP and LP. Moreover, a basic feature is that the temperature increase is
8 significant in the tropics and Arctic regions during the three periods of 21st
9 century.~~both exhibit considerable changes in seasonality (Figure 6). Relative~~
10 ~~to RP, temperatures for all three RCPs are projected to rise during the EP~~
11 ~~(Figure 6 a), MP (Figure 6 c), and LP (Figure 6 e), with the greatest warming~~
12 ~~occurring in winter, and the smallest in summer. Similar results in EP (Figure 6~~
13 ~~a) show that the temperature increase does not exceed 2°C, which is~~
14 ~~consistent with the results in AR5. During later periods, the magnitude of~~
15 ~~warming varies according to RCP, particularly during the LP, for which the~~
16 ~~RCP8.5 simulation produces a larger change than the other two emissions~~
17 ~~pathways (Figure 6 e).~~

18 Precipitation also increases throughout the 21st century for all three RCPs
19 (Figure 6d–f), and changes in precipitation during winter exceed those during
20 summer, despite the larger absolute change in precipitation in summer. During
21 the EP, the magnitude of precipitation increase is the same for all three RCPs,
22 and the change gradually grows larger with increased emissions over time. A
23 noticeable feature of the model outputs is that changes in precipitation for
24 mid–low emissions are not significant during the MP and LP, the largest
25 increase in precipitation occurs during winter in the LP for RCP8.5, and the RE
26 exceeds 20%.

27 ~~Precipitation also exhibits an increasing trend for the different RCPs, with~~
28 ~~the smallest increase occurring in spring, coincident with the largest decrease~~
29 ~~in SWE during spring. Simulated changes in precipitation are similar for the~~
30 ~~different RCPs during the EP (Figure 6 b), but diverge during the MP (Figure 6~~

d) and LP (Figure 6 f), indicating that the magnitude of projected precipitation changes is dependent on RCP and the time period. The most significant increase in precipitation occurs during the LP for RCP8.5. While the rise in temperature during the winter half year is larger than that of the summer half year, the opposite is true for precipitation, with the greatest increase taking place during the summer half year. This pattern implies that decreasing SWE is attributable to increasing temperature and the minor increase in precipitation

SWE tends to decrease alongside the increase in global temperature throughout the 21st century. To further validate this finding for SWE in different RCPs, Table 2 shows the regression slope for mean annual SWE and mean temperature over different latitude bands in the NH during the RP, EP, MP and LP. The results show a significant decrease in SWE for RCP8.5 during the EP, MP and LP. However, for the mid-low emission scenario, a significant decrease in SWE at different latitude bands only occurs persistently in the EP. In the MP and LP, a significant decrease in SWE occurs mainly in the mid-high latitude band. The distribution in the linear trend of mean annual SWE (not shown) shows decreases over northern North America and the TP, and increases over Siberia. This pattern indicates that the change in mean annual SWE is spatially variable, which is consistent with the spatial change shown in Figure 3.

~~To differentiate between the relative contributions of temperature and precipitation to SWE, we calculated partial correlations between the SWE and temperature and precipitation. Table 3 shows that for each time period of the 21st century, SWE has a strong negative partial correlation with temperature and weak correlation with precipitation. The significantly negative partial correlation for RCP8.5 decreases from EP to LP in the winter half year, implying that the rate of decline should diminish as a consequence of rising temperature. We also note that the partial correlation between SWE and temperature during the spring uniformly passes the 90% significance test~~

带格式的：缩进：首行缩进： 1.5 字符

1 during the EP, MP, and LP for RCP8.5, resulting in a persistent decline in
2 springtime SWE. The largest decline in simulated SWE also occurs in spring,
3 consistent with the results shown in Figures 3 and 5, the decrease in SWE is
4 related to the increasing temperature. Räisänen (2008) proposed that
5 changes in snow conditions will most likely depend on present day
6 temperature, in close agreement with our results.

7 The correlation between SWE and temperature in Table 2 reflects the
8 relation of SWE decreasing to the increasing temperature. The sensitivity of
9 SWE to temperature shows a gradually increase over the 21st century from
10 the south to the north. The correlation is significant in most latitude zones
11 (north of 30°N) in EP, but not in MP or LP, in all three RCPs, and is only
12 significant north of 30°N under RCP8.5 in the EP, MP and LP. In addition, SWE
13 is only weakly related to temperature in MP and LP except for several latitude
14 zones in RCP2.6, suggesting that the temperature increase is not always
15 linked to a decreasing SWE.

16 **4.3 Trend changes in SWE**

17 To further analyze the SWE changes in different RCPs, Figure 7 shows
18 the annual and seasonal SWE trend distribution during 2006–2099 in the NH.
19 The results show that the projected significant changes in SWE occur at mid to
20 high latitudes, with a decreasing trend over the northern North America and
21 the TP, and an increasing trend over Siberia. This pattern shows that the rate
22 of SWE change is spatially variable. The CMIP5 multi-model ensemble
23 projects a decreasing trend in SWE in most regions over the NH landmasses
24 between 2006 and 2099 (Figure 7). For RCP2.6, the mean annual SWE is
25 projected to decrease considerably over the TP, where the annual mean trend
26 is less than $-4 \text{ kg m}^{-2}/10\text{a}$, which is consistent with the temperature increasing
27 rapidly at high elevations in mid-latitude regions. Coastal Alaska is another
28 region where SWE changes are evident, and the trend here is between -1.5
29 and $-1 \text{ kg m}^{-2}/10\text{a}$. In other regions, trends range from -0.5 to $0.5 \text{ kg m}^{-2}/10\text{a}$
30 for RCP2.6. An increasing trend is projected for central Asia and eastern

1 Siberia.

2 For RCP4.5, the areal extent of the significant reduction in SWE
3 increases over both the TP and coastal Alaska, and the notably decreasing
4 trend over the TP reflects the decreasing SWE in response to increasing
5 temperature, with the exception of the influence of terrain. For RCP8.5, the
6 mean annual SWE is projected to decline over North America, particularly in
7 western North America and eastern Canada, where the trend is smaller than
8 $-4 \text{ kg m}^{-2}/10\text{a}$. In the Eurasia region north of 45°N , SWE is projected to
9 increase in the east (eastern Siberia) and decrease in the west. Another
10 significant negative trend is located over central Russia, where the negative
11 trend in SWE ranges from -3.5 to $-3 \text{ kg m}^{-2}/10\text{a}$. At mid-low latitudes in
12 Eurasia, the most significant reductions in mean annual SWE still occur over
13 the TP. Compared with the lower emissions pathways (RCP2.6, RCP4.5), the
14 magnitude of decline or increase in SWE is greater for RCP8.5. Specifically,
15 the CMIP3 models show that mean annual SWE will increase over eastern
16 regions and decrease over western regions of Eurasia between 2003 and
17 2060, and that the intensity of SWE changes is greater under
18 higher emissions scenarios (e.g., A2) than under lower emissions scenarios
19 (e.g., B1) (Ma et al., 2011).

20 OnAt a the seasonal scale, projected trends in SWE over the NH
21 landmasses are weaker during the summer half-year than the winter half-year
22 for all three RCPs. During winter, in Eurasian north of 45°N , SWE exhibits an
23 increasing trend in the east and a decreasing trend in the west. In contrast,
24 trends in wintertime SWE are uniformly negative over North America and the
25 TP. From the lower emissions to the higher emissions, both the increasing and
26 decreasing trends become more pronounced. In contrast, the extent and
27 intensity magnitude of the SWE increasemental SWE in winter is larger than
28 that in spring, but the reduction range and strength magnitude of SWE
29 decrease is significantly smaller than that in spring. This is due to the later shift
30 from liquid to solid precipitation in autumn and an earlier onset of snowmelt in

带格式的：缩进：首行缩进： 1.5
字符

1 spring (Räisänen, 2008). Consequently, the reduction in SWE averaged over
2 the NH is more significant in spring than in winter; ~~consequently, the absolute~~
3 ~~scale of reduction in SWE is larger in spring than in winter.~~

4 ~~Although ensemble simulations show that SWE decreases throughout~~
5 ~~much of the NH during the three RCPs investigated, we note that there~~
6 ~~remains a significant increasing trend in SWE across Siberia in winter and~~
7 ~~spring. Nonetheless, owing to the greater geographical extent and magnitude~~
8 ~~of the projected reductions, the average trend for the NH in the 21st century is~~
9 ~~for progressively declining SWE.~~

10 There is high model uncertainty of SWE simulation in the 21st century,
11 especially for RCP8.5, this is illustrated in Figure 7, which also shows the
12 range of uncertainty in the mid-low emission scenario. However, despite
13 model uncertainty, ~~The projected changes in mean annual SWE over NH~~
14 ~~landmasses in the three RCPs are shown in Figure 8 and Table 4. Relative to~~
15 ~~RP, mean annual SWE still exhibits a consistent and significant decline for~~
16 ~~each of the three RCPs, with linear trends of -0.54 kg m⁻²/10a for RCP2.6,~~
17 ~~-1.09 kg m⁻²/10a for RCP4.5 and -2.05 kg m⁻²/10a for RCP8.5~~ ~~-0.54, -1.09,~~
18 ~~and -2.05 kg m⁻²/10a for RCP2.6, RCP4.5, and RCP8.5 (Table 34),~~
19 ~~respectively. After 2040, Figure 7 also shows that~~ the negative trend in SWE
20 gradually begins to level out for RCP2.6, and weakens somewhat for RCP4.5.
21 For RCP8.5, however, the SWE continues to decline beyond the end of the
22 21st century, which agrees with projections of snow cover extent (Zhu and
23 Dong, 2013). ~~consistent with anticipated reductions in snow cover (Brutel et al.,~~
24 ~~2012).~~

25 Despite the fact that ensemble simulations show decreasing SWE
26 throughout much of the NH during the three RCPs investigated, we note a
27 significant increasing trend in SWE across Siberia in winter and spring.
28 Nonetheless, owing to the greater geographical extent and magnitude of the
29 projected reductions, there is an overall negative trend in NH SWE during the
30 21st century.

带格式的：缩进：首行缩进： 1.77
字符

5 Contribution analysis for SWE change ~~Changes in SWE~~ with rising temperature

In both seasonal and zonal contexts, rising temperatures play a fundamental role in projected SWE. Figure 6 shows that the most significant increases in temperature and precipitation occur in winter, but the largest reduction in SWE appears in summer. To ~~analyze~~ identify the relative contributions ~~impact~~ of temperature and precipitation to changes in ~~on~~ SWE ~~in the 21st century~~, we calculate the partial correlation between SWE and temperature as well as between SWE and precipitation during the RP, EP, MP and LP for three RCPs (Table 4). SWE has a strong negative partial correlation with temperature and weak correlation with precipitation throughout the 21st century. The negative partial correlation for RCP8.5 decreases from the EP to the LP in the winter half-year, indicating that the rate of the SWE decrease should decline as temperature increases. We also note that the partial correlation between SWE and temperature during the spring uniformly passes the 90% significance test during the EP, MP and LP for RCP8.5, resulting in a persistent decline in springtime SWE, despite the increase in precipitation. ~~the ratios of SWE decrease to temperature increase are calculated for the three RCPs during the EP, MP, and LP (Figure 9). The ratios reflect the sensitivity of SWE to temperature. Similar linear relations have been reported for sea ice (Mahlstein and Knutti, 2012) and permafrost (Slater, 2013), indicating that increasing temperature plays a central role in cryospheric change. As shown in Figure 9, the slopes for EP, MP, and LP (-1.47 to -2.50 kg m⁻²°C⁻¹) are less than that for the RP (-3.17 kg m⁻²°C⁻¹), implying that the rate of decrease in SWE ultimately will decline with persistent~~

带格式的: 定义网格后不调整右缩进, 行距: 2 倍行距, 不对齐到网格

1 ~~temperature rise. Furthermore, we note that the sensitivity of SWE to~~
2 ~~temperature increases gradually from the EP to LP for a single emissions~~
3 ~~pathway, and over the same period the sensitivity decreases when moving~~
4 ~~from the lower emissions to higher emissions pathways. Thus, the impact of~~
5 ~~temperature on SWE is dependent on the magnitude and duration of~~
6 ~~emissions forcing.~~

7 Relative to 1986–2005, the largest absolute decline in simulated SWE
8 also occurs in spring, indicating that the decrease in SWE is related to earlier
9 temperature-driven snowmelt. This result agrees with Räisänen (2008) who
10 proposed that changes in snow conditions would likely depend on present-day
11 temperature. With the increasing temperature, the sensitivity of SWE to
12 temperature averaged over the NH gradually increases from the EP to the LP
13 for the same RCP (not shown).

14 Temperature increase may change the water cycle and rain–snow ratio
15 (fraction of solid precipitation), and will act to increase the rate of snow melt
16 (fraction of accumulated snowfall). Actually, as shown by Equation 4, SWE
17 can be affected by changes in total precipitation, the fraction of precipitation
18 that falls as snow and the fraction of accumulated snowfall that has not melted.
19 Räisänen (2008) used CMIP3 model simulations to analyze the contributions
20 of the above factors to SWE in Finland and eastern Siberia, and suggested
21 that the major contributor to the change in SWE varies regionally. Thus, over
22 the whole NH, how about the effect of total precipitation, snowfall and
23 accumulated snowfall on SWE during the different periods of the 21st century.

24 ~~Furthermore, a linear relationship between SWE and temperature is~~
25 ~~found for all three RCPs and all three periods (Table 2). The linear regression~~
26 ~~slope reflects the response of SWE to the increasing temperature. The~~
27 ~~sensitivity of SWE to temperature gradually declines over the course of the~~

1 ~~21st century for RCP8.5, suggesting a threshold for the relationship between~~
2 ~~SWE and temperature. That is, if the temperature increases to a certain level,~~
3 ~~the rate of decline in SWE will slow down.~~

4 Figure 8 shows the contributions of total precipitation, snowfall and
5 accumulated snowfall to the changes in SWE for three RCPs during three
6 periods of 21st century. During the EP, total precipitation shows an increase in
7 all months, but snowfall decreases in all months. This indicates that changes
8 in total precipitation and snowfall have competing effects and lead to an
9 increase and decrease in SWE, respectively. Because the magnitude of the
10 decrease in snowfall is larger than the increase in total precipitation, the
11 reduction in SWE is attributed to changes in the fraction of precipitation that
12 falls as snow. The contributions of total precipitation, snowfall and
13 accumulated snowfall grow larger with time. During the LP, temperature
14 increases cause the change in accumulated snowfall to be larger than the
15 change in snowfall after May, so that the former becomes the main control on
16 SWE. In general, from August to May in the next year, the change in SWE is
17 generally related to changes in snowfall, but after May increased melting
18 efficiency dominates the change in SWE.

19 **6 Summary and conclusions**

20 We employed ~~twenty~~ 20 CMIP5 climate models to investigate projected
21 changes in SWE for the 21st century, ~~using~~ under three different RCPs. ~~We~~
22 ~~find that, relative to RP, mean annual SWE for all three RCPs exhibits a~~ The
23 results show a decrease in mean annual SWE for all three RCPs ~~negative~~
24 ~~trend~~ — over much of the NH landmasses relative to the RP. The most
25 significant reductions occur over the TP and ~~the majority of~~ North America,
26 while a minor increase occurs over Siberia, however, the overall pattern in the
27 NH is one of declining SWE. ~~—~~ Moreover, we suggested that the intensity of
28 changes in SWE is greater for RCP8.5 than for RCP4.5 and RCP2.6, and that
29 these changes are most pronounced at mid to high latitudes. Since both the

1 magnitude and geographic extent of the changes are much greater in spring
2 than in winter, the overall pattern in the NH is one of declining SWE, with the
3 most significant losses occurring in spring. The multi-model ensemble
4 suggests that the negative trend in SWE for RCP2.6 will begins to level out or
5 become stable for RCP2.6 and weakens somewhat for RCP4.5, diminish after
6 2040, whereas the declining trend continues beyond the end of the 21st
7 century for RCP8.5. The patterns of change in SWE in spring and winter are
8 the same with the mean annual SWE, since both the magnitude and
9 geographic extent of the reduction in SWE are much greater in spring than in
10 winter, the significant reduction in SWE over NH occurs in spring, however, the
11 largest percent change in SWE does not occur in spring, but in summer, and
12 this indicates that the change in SWE is related to baseline SWE.

带格式的：非突出显示

13 Changes in SWE are accompanied by increasing temperature and
14 precipitation during the winter half-year, ~~most notably in spring.~~ SWE is not
15 simply a function of temperature. ~~However, but~~ the partial correlations
16 between SWE and both temperature and precipitation indicate that
17 ~~considerable~~ decreases in SWE can be attributed primarily to increasing
18 temperatures. Furthermore, we note that while atmospheric warming occurs
19 primarily preferentially during the winter half-year, coincident with the ~~small~~
20 greater increase projected increase in precipitation, ~~but the increase greater~~
21 precipitation cannot compensate for the increased snowmelt due to rising
22 temperatures.

23 Projections of mean annual SWE exhibit a declining trends and the
24 magnitude of the SWE relative decrease is gradually reduced from south to
25 north over NH. Namely, a more significant reduction in mean annual SWE for
26 all three RCPs occurs at low latitudes throughout the 21st century,
27 accompanied by an anticipated warming trend. Annual maximum SWE also
28 has similar features to mean annual SWE, with the largest decrease observed
29 at low latitudes. However, with increasing latitude. Specifically, a more
30 significant reduction in mean annual SWE for all three RCPs occurs between

1 70° and 80°N for the three time periods of the 21st century, accompanied by
2 an anticipated warming trend. Moreover, the correlation between mean annual
3 SWE and temperature is significant at high latitudes, and the data suggests
4 that a threshold of the relationship between the SWE and temperature would
5 restrain mitigate the persistent decline decrease in SWE with increasing
6 temperature. For ZMSWE, the results also show a larger scale decrease in
7 ZMSWE centered between 30° and 40°N for all RCPs during the three periods
8 investigated, which reflects the influence of terrain on SWE; and other
9 pronounced reduction occurs at high latitude during the LP, only for RCP8.5,
10 implying that, with the exception of topography, changes in ZMSWE are
11 influenced primarily by temperature.

12 The 21st century temperature increases are projected to have a
13 pronounced effect on rain-snow ratios and snowmelt. Precipitation also shows
14 an increasing trend, however, because the magnitude of the reduction in
15 snowfall is larger than the increase in total precipitation, the decreasing
16 snowfall becomes the major contributor to the reduction in SWE from August
17 to May in the next year during the 21st century. As the temperature increase,
18 efficient snowmelt dominates the change in SWE after May, especially during
19 the LP. An intriguing feature of the modeled projections is that, although
20 decreasing SWE invariably accompanies the increasing temperature, ratios of
21 SWE decrease to temperature increase are highly variable among the RCPs
22 and modeled time periods. The results suggest that this pattern reflects
23 diminished sensitivity of SWE to temperature during the EP, MP, and LP
24 relative to the RP. As mean annual temperature increases, the rate of decline
25 in SWE will decrease, a pattern that is dependent not only on the specific RCP
26 but also on the integration time period (e.g., EP, MP, LP). Finally, a
27 the model projection have increasing results contain uncertainty later in the
28 21st century, the trends observed in the simulations remain consistent
29 to errors caused by integration truncation and inter model differences, and
30 increased model error and bias do not appear to this does not affect the

带格式的：缩进：首行缩进： 1.5 字符

带格式的：上标

1 | ~~generality or the value of the main~~ conclusions of this study.

2 |

3 | *Author contributions.* C. H. Wang contributed to the idea and conception of
4 | this study, analysis of the result and arrangement the framework of the
5 | manuscript.

6 | H. X. Shi carried out the analysis of the data and writing the manuscript with
7 | the assistance of C. H. Wang.

8 |

9 | *Acknowledgments.* This work was supported by the National Natural
10 | Science Foundation of China (2013CBA01808, 91437217, 41275061). The
11 | snow water equivalent data used in this study are from European Space
12 | Agency (ESA) GlobSnow product and CMIP5 model outputs.

13 |

References

- [Brown, R. D., and Mote, P. W. : The response of Northern Hemisphere snow cover to a changing climate. *Journal of Climate*, 22, 2124-2145, 2009.](#)
- [Barnett, T. P., Adam, J. C. and Lettenmaier D. P. : Potential impacts of a warming climate on water availability in snow dominated regions. *Nature*, 438, 303-309, doi:10.1038/nature04141, 2005.](#)
- Brutel-Vuilmet, C., Ménégoz, and Krinner, G. : An analysis of present and future seasonal Northern Hemisphere land snow cover simulated by CMIP5 coupled climate models. *The Cryosphere*, 7, 67-80, doi:10.5194/tc-7-67-2013, 2013.
- [Bulygina, O. N., Razuvaev V. N. and Korshunova, N. N. : Changes in snow cover over Northern Eurasia in the last few decades. *Environmental Research Letters*, 4, 045026, doi:10.1088/1748-9326/4/4/045026, 2009.](#)
- [Chen, S. B., Liu, Y. F., Thomas A. Climatic change on the Tibetan Plateau: potential evapotranspiration trends from 1961 - 2000\[J\]. *Climatic Change*, 76, 291-319, 2006.](#)
- [Clark, M. P., Serreze, M. C. and McCabe, G. J. : Historical effects of El Nino and La Nina events on the seasonal evolution of the montane snowpack in the Columbia and Colorado River Basins. *Water Resources Research*, 37, 741-757, doi.1029/2000WR900305, 2010.](#)
- Falarz, M. : Long-term variability in reconstructed and observed snow cover over the last 100 winter seasons in Cracow and Zakopane (South Poland). *Climate Research*, 19, 247-256, 2002.
- Groisman, P. Y., Knight, R. W., Karl, T. R., Easterling, D. R., Sun, B., and Lawrimore, J. H.: Contemporary changes of the hydrological cycle over the contiguous United States: Trends derived from in situ observations. *Journal of Hydrometeorology*, 5, 64-85, 2004.
- Hancock, S.; Baxter, R.; Evans, J.; Huntley, B. Evaluating global snow water equivalent products for testing land surface models. *Remote Sens. Environ*, 128, 107–117, 2013.
- Hayhoe, K., Cayan, D., Field, C. B., Frumhoff, P. C., Maurer, E. P., Miller, N. L. and Verville, J. H.: Emissions pathways, climate change, and impacts on California. *Proceedings of the National Academy of Sciences of the United States of America*, 101,

带格式的：字体：非加粗

1 12422-12427, 2004.

2 Hosaka, M., Nohara, D. and Kitoh, A.: Changes in snow coverage and snow water
3 equivalent due to global warming simulated by a 20 km-mesh global atmospheric
4 model. SOLA, 1, 93-96, doi: 10.2151, 2005.

5 ~~Houghton, J. T., Ding, Y., Griggs, D. J., Noguer, M., vander Linden, P.J., Dai, X., Maskell,
6 K. and Johnson, C. A. : Summary for Policymakers. In : Climate change 2001: The
7 Scientific Basis. Contribution of working Group I to the Third Assessment Report of the
8 Intergovernmental Panel on Climate Change. Cambridge University Press, Cambridge,
9 United Kingdom and New York, NY, USA, pp,4, 2001.~~

10 Ji, Z. M. and Kang, S. C.: Projection of snow cover changes over China under RCPs
11 scenarios. Climate dynamics, 41, 589-600, 2012.

12 ~~Lemke, P., Ren, J., Alley, R. B., et al. Observations: changes in snow, ice and frozen
13 ground[J]. Titel: Climate change 2007: the physical science basis: summary for
14 policymakers, technical summary and frequently asked questions. Part of the Working
15 Group I contribution to the Fourth Assessment Report of the Intergovernmental Panel
16 on Climate Change, 2007: 337-383.~~

17 ~~Liu, X. X, Chen, B, D. Climatic warming in the Tibetan Plateau during recent decades[J].
18 International journal of climatology, 20: 1729-1742, 2000.~~

19 ~~Maloney, E. D., Camargo, S. J., Chang, E., et al. North American Climate in CMIP5
20 Experiments: Part III: Assessment of 21st Century Projections[J]. Journal of Climate,
21 2014, 27: 2230-2270.~~

22 ~~Ma, L. J., Luo, Y. and Qin, D. H.: Snow Water Equivalent over Eurasia in
23 Next50YearsProjected by CMIP3Models. Journal of glaciology and geocryology, 33,
24 707-720, 2011.~~

25 ~~Mahlstein, I. and Knutti, R. : September Arctic sea ice predicted to disappear near 2°C
26 global warming above present. Journal of Geophysical Research, 117, D06104,
27 doi:10.1029/2011JD016700, 2012.~~

28 ~~McCabe, G. J. and Dettinger, M. D. : Primary modes and predictability of year to year
29 snowpack variations in the western United States from teleconnections with Pacific
30 Ocean climate. Journal of Hydrometeorology, 3, 13-25, 2002.~~

带格式的： 缩进： 悬挂缩进： 1.59
字符， 左 -0.23 字符， 首行缩进：
-1.59 字符， 行距： 固定值 20 磅

- 1 Meehl, G. A., Stocker, T. F., Collins, W. D., Friedlingstein, P., Gaye, A.T., Gregory, J. M.,
2 Kitch, A., Knutti, R., Murphy, J. M., Noda, A., Raper, S. C. B., Watterson, I. G., Weaver,
3 A. J., and Zhao, Z. C. : Global Climate Projections. In: Climate Change 2007: The
4 Physical Science Basis. Contribution of Working Group I to the Fourth Assessment
5 Report of the Intergovernmental Panel on Climate Change [Solomon, S.,D. Qin, M.
6 Manning, Z. Chen, M. Marquis, K.B. Averyt, M. Tignor and H.L. Miller (eds.)].
7 Cambridge University Press, Cambridge, United Kingdom and New York, NY, USA, pp,
8 772, 2007.
- 9 Mote, P. W.: Climate-Driven Variability and Trends in Mountain Snowpack in Western
10 North America. *Journal of Climate*, 19, 6209-6220, 2006.
- 11 Mote, P. W., Hamlet, A. F., Clark, M. P. and Lettenmaier, D. P. : Declining mountain
12 snowpack in western North America. *Bulletin of the American Meteorological Society*,
13 86, 39-49.
- 14 [Pierce, D. W., et al. Attribution of declining Western U.S. snowpack to human effects\[J\].](#)
15 [Journal of Climate. 21, 6425–6444, 2008.](#)
- 16 ~~[Pulliainen, J., J. Grandell, and M. T. Hallikainen. HUT Snow Emission Model and its](#)~~
17 ~~[Applicability to Snow Water Equivalent Retrieval. IEEE Transactions on Geoscience](#)~~
18 ~~[and Remote Sensing. 37: 1378-1390, 2006.](#)~~
- 19 Räisänen, J. : Warmer climate: less or more snow? *Climate Dynamics*, 30, 307-319,
20 2008.
- 21 Räisänen, J. and Eklund, [J.](#) : 21st Century changes in snow climate in Northern Europe: a
22 high-resolution view from ENSEMBLES regional climate models. *Climate Dynamics*,
23 38 : 2575–2591, doi:10.1007/s00382-011-1076-3, 2011.
- 24 ~~[Rawlins, M. A., Willmott, C. J., Shiklomanov, A., Linder, E., Froking, S., Lammers, R. B.,](#)~~
25 ~~[Vorosmarty, C. J. : Evaluation of trends in derived snowfall and rainfall across Eurasia](#)~~
26 ~~[and linkages with discharge to the Arctic Ocean. Geophysical Research Letters, 33,](#)~~
27 ~~[L07403, doi:10.1029/2005GL025231, 2006.](#)~~
- 28 Scherrer, S. C., Appenzeller, C. and Laternser, M. : Trends in Swiss alpine snow
29 days—the role of local and large scale climate variability. *Geophysical Research*
30 *Letters*, 31, L13215, doi:10.1029/2004GL020255, 2004.

带格式的: 缩进: 左侧: 0 厘米,
悬挂缩进: 1.68 字符, 首行缩进:
-1.68 字符

1 ~~Slater, A. G. and Lawrence, D. M. : Diagnosing Present and Future Permafrost from~~
2 ~~Climate Models. Journal of Climate, 26, 5608-5623, 2013.~~

3 Stewart, I. T., Cayan, D. R. and Dettinger, M. D. : Changes towards earlier streamflow
4 timing across western North American. Journal of climate, 18, 1136-1155, 2005.

5 Stocker, T. F., Qin, D. H., Plattner, G. K., Tignor, M., Allen, S. K., Boschung, J., Nauels, A.,
6 Xia, Y., Bex, V., and Middle, P. M. : Summary for Policymakers. In: Climate change
7 2013: The Physical Scientific Basis. Contribution of Working Group I to the Fifth
8 Assessment Report of the Intergovernmental Panel on Climate Change. Cambridge
9 University Press, Cambridge, United Kingdom and New York, NY, USA, pp, 4, 2013.

10 Takala, M.; Luoju, K.; Pulliainen, J.; Derksen, C.; Lemmetyinen, J.; Kärnä, J.P.; Koskinen,
11 J.; Bojkov, B. Estimating northern hemisphere snow water equivalent for climate
12 research through assimilation of space-borne radiometer data and ground-based
13 measurements. Remote Sens. Environ. 115, 3517–3529, 2011.

14 Vavrus, S. : The role of terrestrial snow cover in the climate system. Climate dynamics, 29,
15 73-88, 2007.

16 Vojtek, M., Faško, P. and Šťastný, P. : Some selected snow climate trends in Slovakia
17 with respect to altitude. Acta Meteorologica Universitatis Comenianae, 32, 17-27,
18 2003.

19 Wang, C. H., Li, J. and Xu, X. G. University of Quasi-3-year period of temperature in last
20 50 years and change in next 20 year in China[J]. Plateau Meteorology, 31: 126-136,
21 2012.

22 Wang, Z. L. and Wang, C.H. : Predicting the snow water equivalent over China in the next
23 40 years based on climate models from IPCC AR4. Journal of glaciology and
24 geocryology, 34:1273-1283, 2012.

25 Zhu, X. and Dong, W. J. : Evaluation and projection of Northern Hemisphere March-April
26 snow cover area simulated by CMIP5 coupled climate models. Progressus
27 Inquisitiones DE Mutatione Climatis, 9(3): 173-180, 2013.

28

1

2

3 Table. 1. Models used in this study.

Number	Model	Institution	Resolution
1	BCC-CSM1-1	Beijing Climate Center, China	2.8° × 2.8°
2	BCC-CSM1-1(m)	Beijing Climate Center, China	1.3° × 1.1°
3	CanESM2	Canadian Center for Climate Modeling and Analysis, Canada	2.8° × 2.8°
4	CCSM4	National Center for Atmospheric Research, USA	1.25° × 0.94°
5	CNRM-CM5	Centre National de Recherches Meteorologiques / Centre Europeen de Recherche et Formation Avancees en Calcul Scientifique	1.4° × 1.4°
6	CSIRO-Mk3-6-0	CSIRO Atmospheric Research, Australia	1.875° × 1.875°
7	FGOALS-g2	Chinese Academy of Sciences	1.4° × 6°
8	FIO-ESM	The First Institute of Oceanography, SOA, China	2.8° × 2.8°
9	GFDL-ESM2G	Geophysical Fluid Dynamics Laboratory, USA	2.5° × 2.0°
10	GISS-E2-H	ASA Goddard Institute for Space Studies, USA	2.5° × 2.0°
11	GISS-E2-R	NASA Goddard Institute for Space Studies, USA	2.5° × 2.0°
12	HadCEM2-ES	Met Office Hadley Centre, UK	1.875° × 1.25°
13	MIROC5	Atmosphere and Ocean Research Institute, Japan	1.4° × 1.4°
14	MIROC-ESM-CHEM	Japan Agency for Marine-Earth Science and Technology, Atmosphere and Ocean Research Institute, Japan	2.8° × 2.8°
15	MIROC-ESM	Japan Agency for Marine-Earth Science and Technology, Atmosphere and Ocean Research Institute, Japan	2.8° × 2.8°
16	MPI-ESM-LR	Max Planck Institute for Meteorology, Germany	1.9° × 1.9°
17	MPI-ESM-MR	Max Planck Institute for Meteorology, Germany	1.875° × 1.875°
18	MRI-CGCM3	Meteorological Research Institute, Japan	1.1° × 1.1°
19	NorESM1-ME	Norwegian Climate Center, Norway	2.5° × 1.875°
20	NorESM1-M	Norwegian Climate Center, Norway	2.5° × 1.875°

4

5

1

2 Table. 2. Zonal slope (Slop) of the regression of mean annual SWE and temperature, and
 3 correlation coefficients (Cor.) between for mean annual SWE and mean
 4 temperature for three RCPs. RP, EP, MP, LP represent the periods 1986–2005,
 5 2016–2035, 2046–2065, and 2080–2099, respectively.

Lat(°N)		RCP2.6				RCP4.5			RCP8.5		
		RP	EP	MP	LP	EP	MP	LP	EP	MP	LP
20-30	S	-0.43*	-0.22	-1.45	-0.36	-0.52*	-0.25	-0.08	-0.23*	-0.23*	-0.08
	C	-0.55*	-0.22	-0.42*	-0.14	-0.69*	-0.34	-0.03	-0.45*	-0.48*	-0.30
30-40	S	-2.15*	-4.38*	-0.74	-1.02	-3.39*	-0.85	-2.86	-3.14*	-1.64*	-0.81*
	C	-0.64*	-0.91*	-0.13	-0.13	-0.77*	-0.29	-0.25	-0.84*	-0.78*	-0.68*
40-50	S	-1.00*	-0.84	-1.60	-2.97*	-1.69*	-1.06*	-3.02*	-1.77*	-0.89*	-0.76*
	C	-0.62*	-0.44*	-0.39	-0.55*	-0.80*	-0.48*	-0.71*	-0.86*	-0.74*	-0.82*
50-60	S	-3.27*	-3.82*	-0.39	-2.68	-3.28*	-3.24*	-2.62*	-3.25*	-2.55*	-1.33*
	C	-0.71*	-0.64*	-0.08	-0.28	-0.75*	-0.65*	-0.57*	-0.80*	-0.78*	-0.67*
60-70	S	-2.87*	-2.57*	-2.84	-3.64	-3.67*	-5.10*	-3.71	-4.10*	-3.70*	-2.84*
	C	-0.66*	-0.47*	-0.32	-0.33	-0.74*	-0.76*	-0.35	-0.71*	-0.83*	-0.73*
70-80	S	-10.2*	-16.9*	-0.30	-2.40	-4.57*	-5.23*	-2.10	-8.31*	-6.16*	-4.62*
	C	-0.88*	-0.72*	-0.02	-0.35	-0.65*	-0.81*	-0.06	-0.84*	-0.91*	-0.88*

6 Note: * values indicate that the slope and correlation exceed the 95% significance test.

1

2

3

Table. 3. Trends in SWE over Northern Hemisphere land during 2006–2099 derived from

4

the three RCPs. All trends are significant at 95% confidence level (Mann–Kendall test).

<u>Trend</u> <u>(kg m⁻²/10a)</u>	<u>RCPs</u>		
	<u>RCP2.6</u>	<u>RCP4.5</u>	<u>RCP8.5</u>
<u>Autumn</u>	<u>-0.51</u>	<u>-1.17</u>	<u>-1.83</u>
<u>Winter</u>	<u>-0.54</u>	<u>-1.18</u>	<u>-2.18</u>
<u>Spring</u>	<u>-0.61</u>	<u>-1.32</u>	<u>-2.39</u>
<u>Summer</u>	<u>-0.50</u>	<u>-1.09</u>	<u>-1.79</u>
<u>Mean</u>	<u>-0.54</u>	<u>-1.09</u>	<u>-2.05</u>

5

1
2
3
4

5 Table. 43. Partial correlations between mean annual SWE and both temperature (T) and
6 precipitation (P) over Northern Hemisphere land for three RCPs. RP, EP, MP, LP
7 represent the periods 1986–2005, 2016–2035, 2046–2065, and 2080–2099,
8 respectively.

Month		RCP2.6				RCP4.5			RCP8.5		
		RP	EP	MP	LP	EP	MP	LP	EP	MP	LP
Jan	T	-0.29	-0.59*	-0.25	-0.1	-0.54*	-0.44*	-0.52*	-0.45*	-0.38*	-0.31
	P	-0.13	-0.22	-0.05	-0.13	0.1	0	-0.14	0.05	-0.05	-0.05
Feb	T	-0.42*	-0.2	-0.1	-0.37*	-0.25	-0.76*	-0.38*	-0.51*	-0.39*	-0.28
	P	0.05	-0.17	-0.11	0.04	-0.11	0.18	0.09	0.02	-0.05	-0.11
Mar	T	-0.22*	-0.26	-0.24	-0.54*	-0.42*	-0.17	-0.56*	-0.4*	-0.4*	-0.4*
	P	-0.07	-0.03	-0.09	0.22	-0.05	-0.18	0.05	-0.02	-0.03	0.01
Apr	T	-0.38*	-0.31	-0.14	-0.38*	-0.37*	-0.49*	-0.51*	-0.49*	-0.38*	-0.38*
	P	-0.06	-0.1	0.02	-0.01	-0.09	0.09	0.09	0.11	-0.08	-0.05
May	T	-0.36*	-0.33	-0.31	-0.34	-0.31	-0.46*	-0.5*	-0.48*	-0.42*	-0.41*
	P	-0.07	-0.1	-0.38	-0.06	-0.2	0.07	0.09	0.1	-0.06	-0.01
Jun	T	-0.43*	-0.33	-0.57*	-0.07	-0.26	-0.46*	-0.08	-0.45*	-0.39*	-0.38*
	P	-0.07	-0.09	0.12	-0.06	-0.11	0.11	-0.27	-0.04	0.02	-0.05
Jul	T	-0.48*	-0.48*	0.27	-0.26	-0.56*	-0.54*	-0.51*	-0.04	-0.46*	-0.24
	P	-0.11	0	-0.2	-0.14	-0.08	-0.02	0.05	0.02	-0.09	-0.02
Aug	T	-0.33	-0.48*	-0.36*	-0.21	-0.48*	-0.38*	-0.29	-0.47*	-0.48*	-0.4*
	P	-0.07	-0.25	-0.06	-0.03	0	0	-0.02	-0.18	0	-0.06
Sep	T	-0.35	-0.44*	-0.39*	0.13	-0.3	-0.1	-0.59*	-0.27	-0.24	-0.34
	P	-0.05	-0.13	-0.01	-0.14	-0.17	-0.07	0.14	-0.07	-0.15	-0.04
Oct	T	-0.35	-0.53*	0.18	0.16	-0.47*	-0.21	-0.5*	-0.33	-0.28	-0.25
	P	-0.08	0	-0.09	-0.52	-0.03	0.06	0.07	-0.1	-0.06	-0.06
Nov	T	-0.43*	-0.36*	-0.07	0.01	-0.53*	-0.47*	-0.21	-0.29	-0.21	-0.33
	P	-0.05	-0.11	-0.09	-0.28	0.15	-0.05	-0.2	-0.03	-0.17	0
Dec	T	-0.25	-0.5*	-0.12	0.08	-0.27	-0.58*	-0.35	-0.34	-0.28	-0.28
	P	-0.12	-0.05	-0.01	-0.29	-0.16	-0.05	-0.19	-0.03	-0.05	0.04

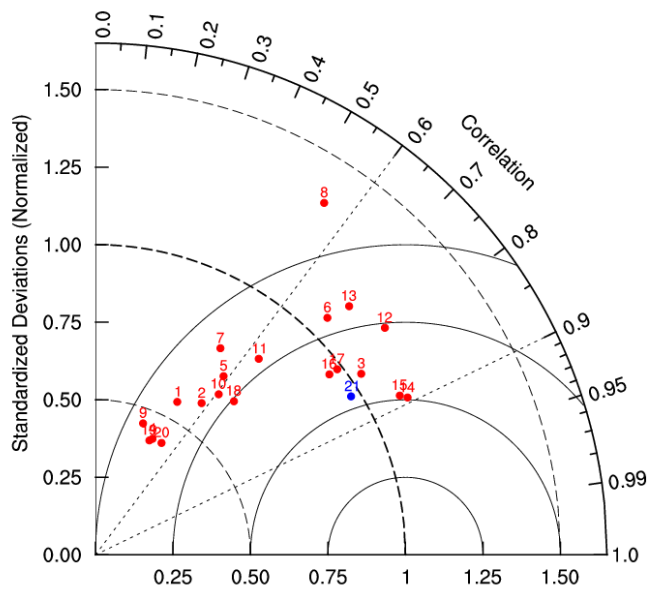
9 Note: * indicate that the partial correlation values exceeds the 95% significance test.

1
2
3
4
5
6
7
8

Table 4. Trends of SWE during 2006–2099 derived from the three RCPs. Each trend is significant at 95% confidence.

Trend (kg m ⁻² /10a)	RCPs		
	RCP2.6	RCP4.5	RCP8.5
Autumn	-0.51	-1.17	-1.83
Winter	-0.54	-1.18	-2.18
Spring	-0.61	-1.32	-2.39
Summer	-0.50	-1.09	-1.79
Mean	-0.54	-1.09	-2.05

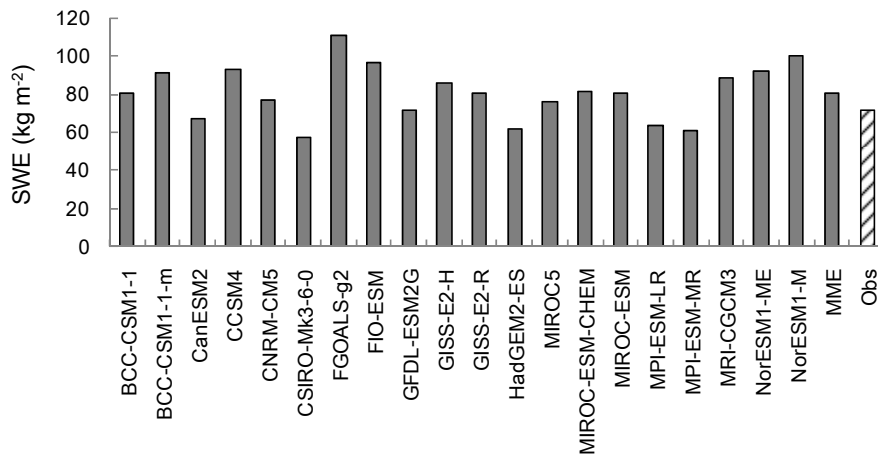
1
2
3
4
5
6
7



8

9 Figure. 1. Spatial correlation and standard variance ratios between observed and
10 simulated (20 models) winter (DJF) mean SWE during 1980-2005. The numbers 1-20
11 ~~indicates the 20 models used in this paper, and~~ refers to the model names in Table 1. The
12 number 21 indicates the multi-model ensemble. The vertical axis indicates the standard
13 deviation ratios, and the numbers along the arc are the spatial correlation.

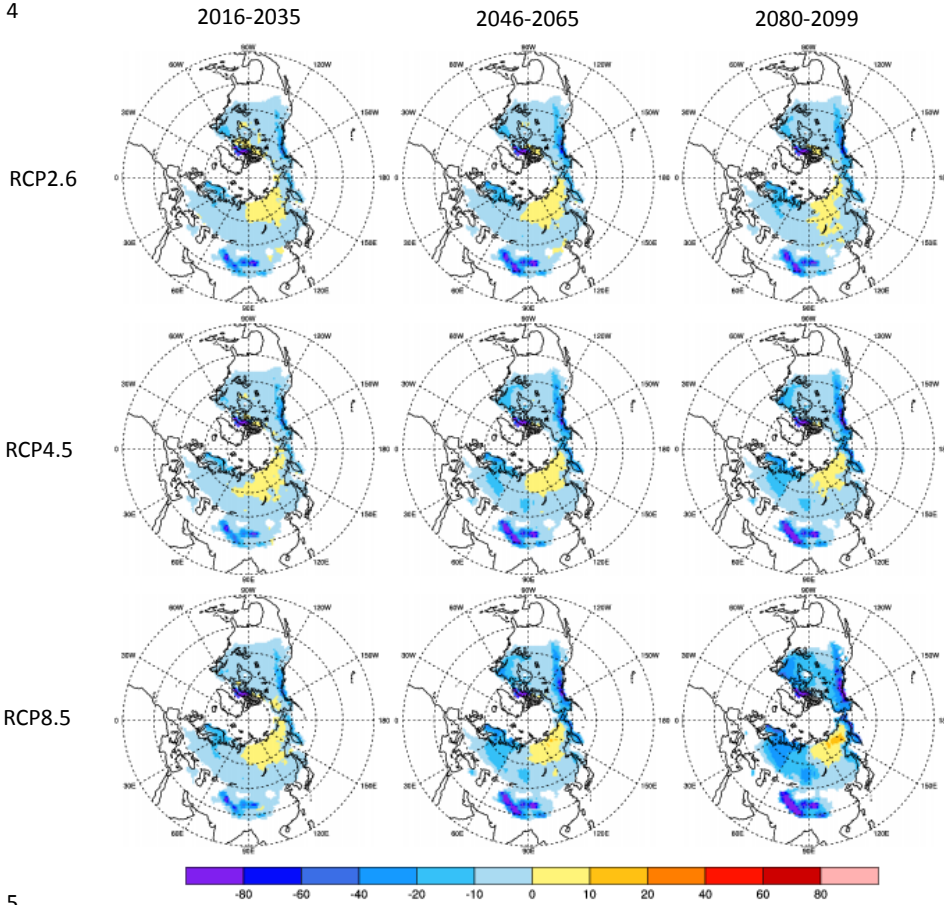
14
15



1
2
3
4
5

Figure. 2. The average of the observed and stimulated winter (DJF) mean SWE over the Northern Hemisphere land during 1980-2005. The multi-model ensemble (MME) refers to a combination of the 20 models listed in Figure 1. (The 'MME' comprises the 20 preceding models listed in the figure).

1
2
3
4



5
6

7 Figure. 3. Changes in mean annual SWE (kg m^{-2}) projected by the CMIP5 ensemble,
8 relative to the period of 1986-2005. The three rows indicated the three scenarios
9 RCP2.6, RCP4.5, and RCP8.5, respectively, the three columns are the three
10 periods of 2016-2035, 2046-2065 and 2080-2099, respectively.

11 Figure. 3. Relative changes in mean annual SWE (%) projected by the CMIP5 ensemble,
12 relative to the 1986-2005 reference period.

1
2
3
4
5
6
7
8
9
10
11
12
13

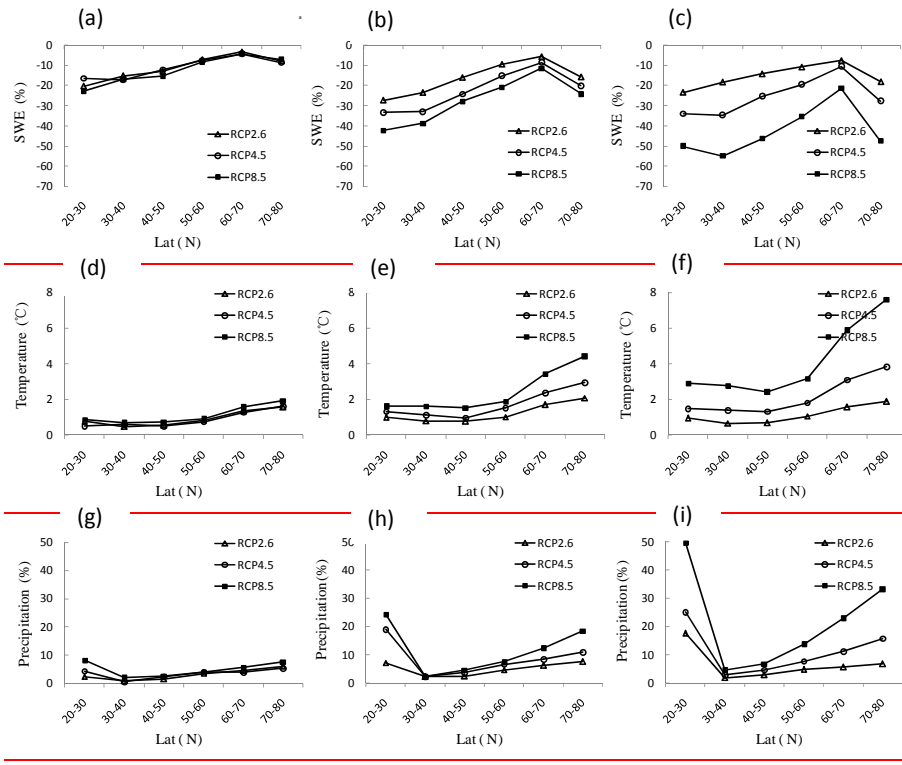


Figure 4. Relative zonal changes in mean annual SWE (a–c), mean annual air temperature (d–f) and mean annual precipitation (g–i) over Northern Hemisphere land for 2016–2035 (left), 2046–2065 (middle), and 2080–2099 (right) relative to the 1986–2005 reference period.

1
2
3
4
5
6
7
8
9
10
11
12

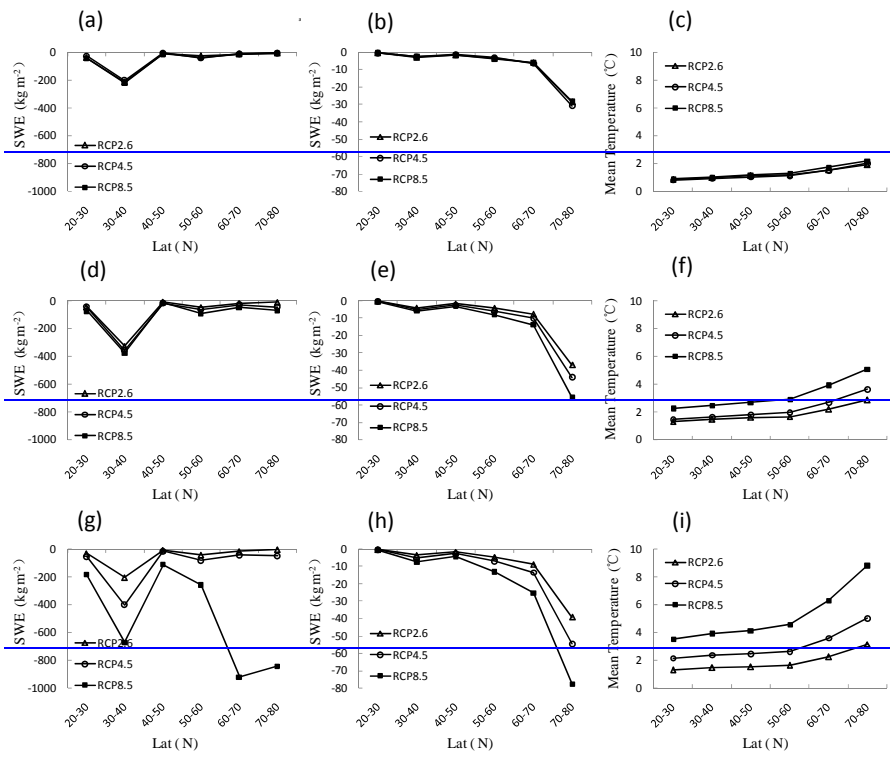
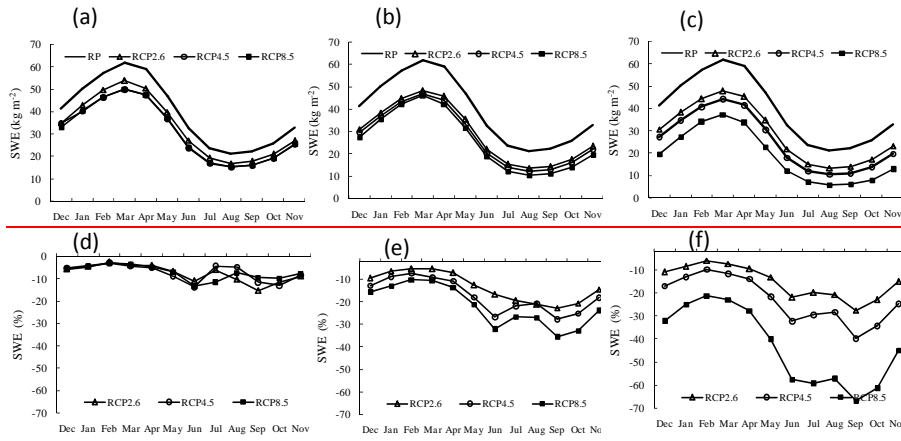


Figure 4. Zonal changes in maximum annual SWE (panels a, d, g), mean annual SWE (panels b, e, h), and mean annual air temperature (panels c, f, i) for 2016–2035 (top), 2046–2065 (middle), and 2080–2099 (bottom), relative to the 1986–2005 mean.

1

2



3

4

5

6 **Figure 5.** Projected monthly average (a–c) and relative change (RE) (d–f) in SWE over
7 Northern Hemisphere land for 2016–2035 (left), 2046–2065 (middle), and 2080–2099
8 (right). Panels d–f show changes relative to the 1986–2005 reference period.

9

1
2
3
4
5
6
7
8
9

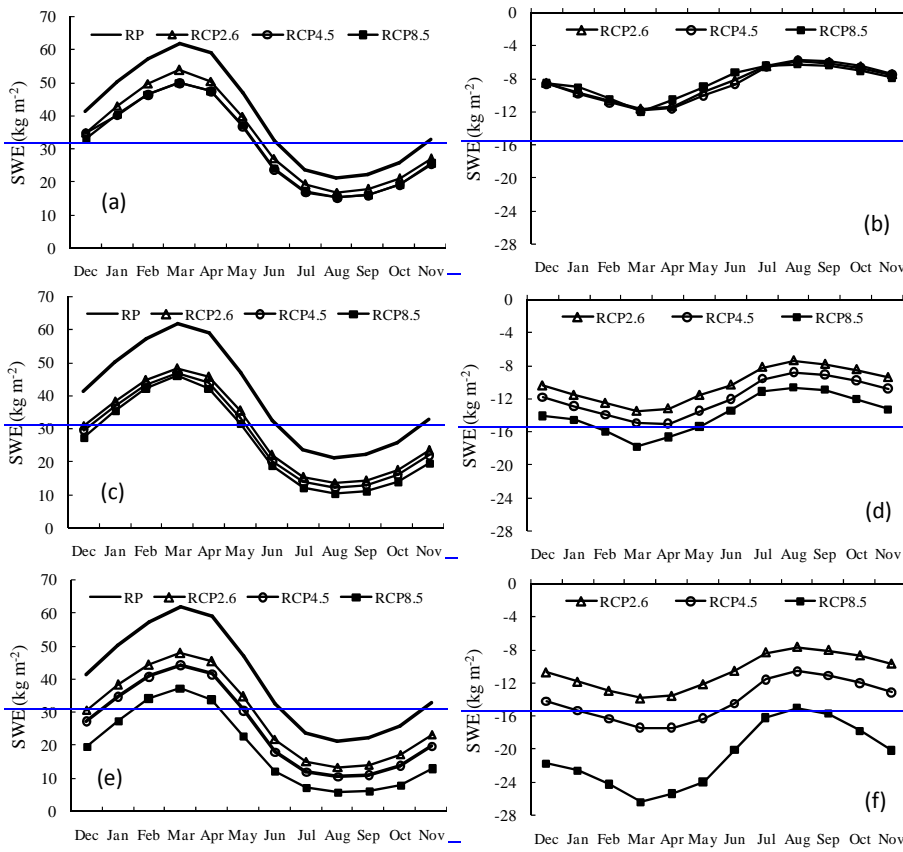


Figure 5. Projected changes in monthly average SWE over NH landmasses: panels (a), (c), and (e) show the output of the RP (1986–2005), RCP2.6, RCP4.5, and RCP8.5 simulations; panels (b), (d), and (f) depict changes in SWE, relative to RP, for 2016–2035 (top), 2046–2065 (middle), and 2080–2099 (bottom).

1
2
3
4
5
6
7
8
9

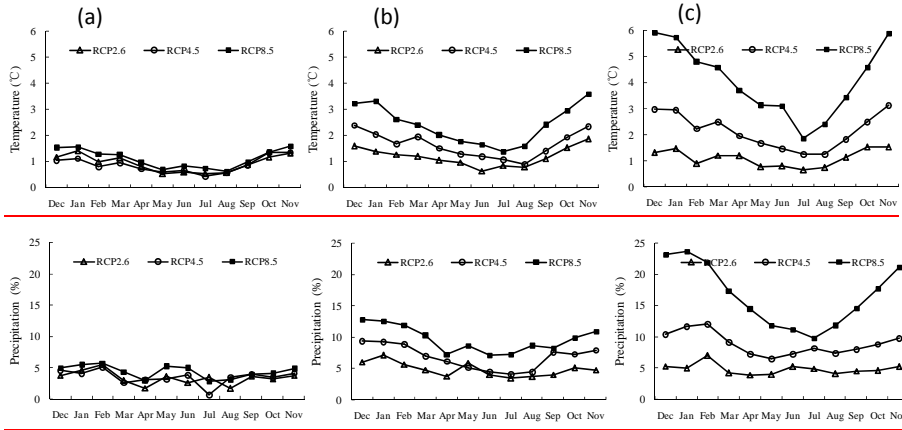


Figure 6. Changes in mean annual air temperature (a–c) and the relative change (RE) in precipitation (d–f) over Northern Hemisphere land for 2016–2035 (left), 2046–2065 (middle), and 2080–2099 (right) for three RCPs, relative to the 1986–2005 reference period.

1
2
3
4
5
6
7
8
9

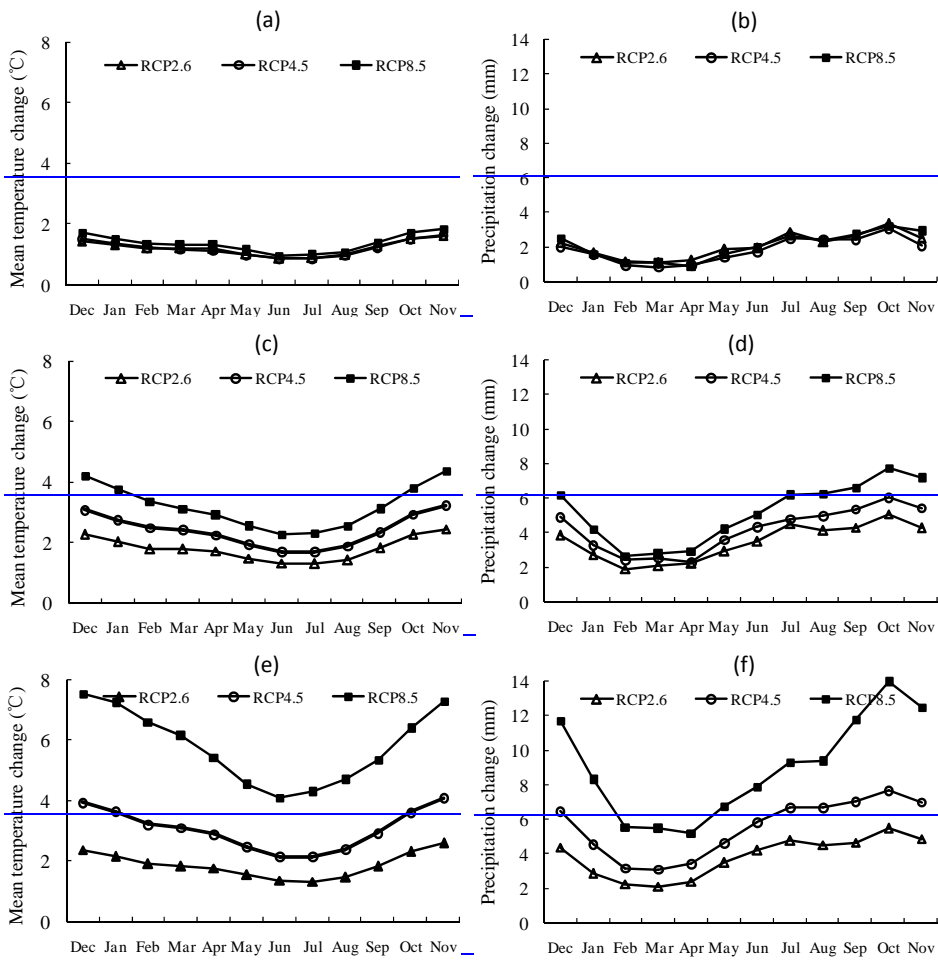
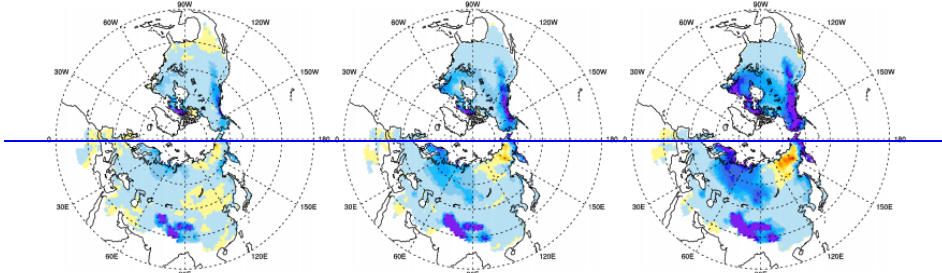
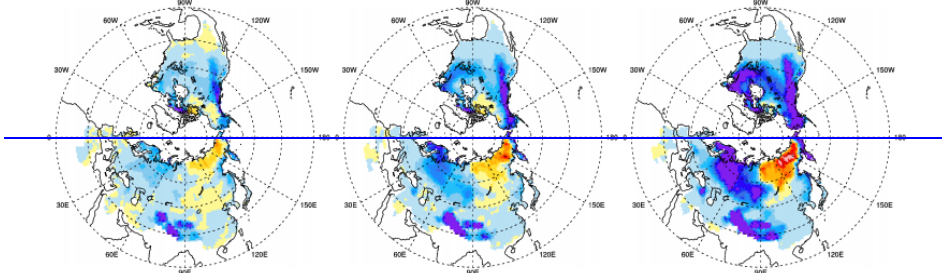


Figure 6. Changes in mean annual air temperature (left) and precipitation (right) for 2016–2035 (a, b), 2046–2065 (c, d), and 2080–2099 (e, f), relative to the 1986–2005 mean, for three RCPs.

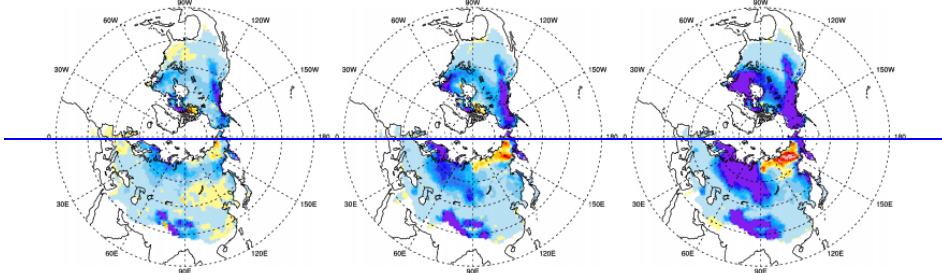
1



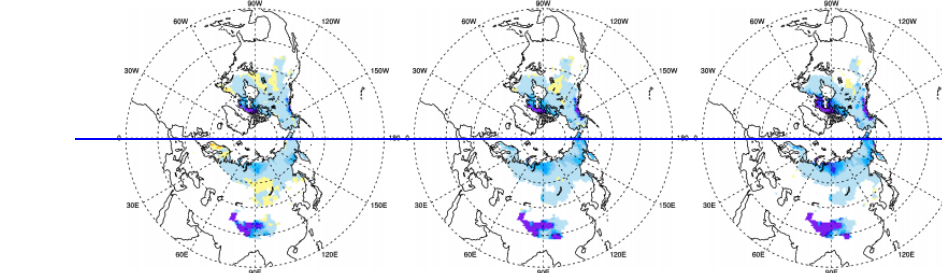
2



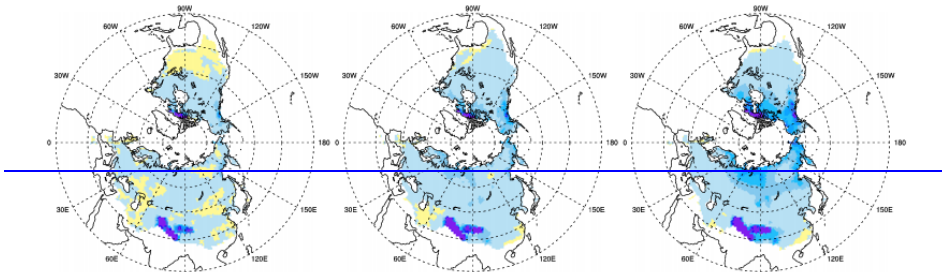
3



4



5



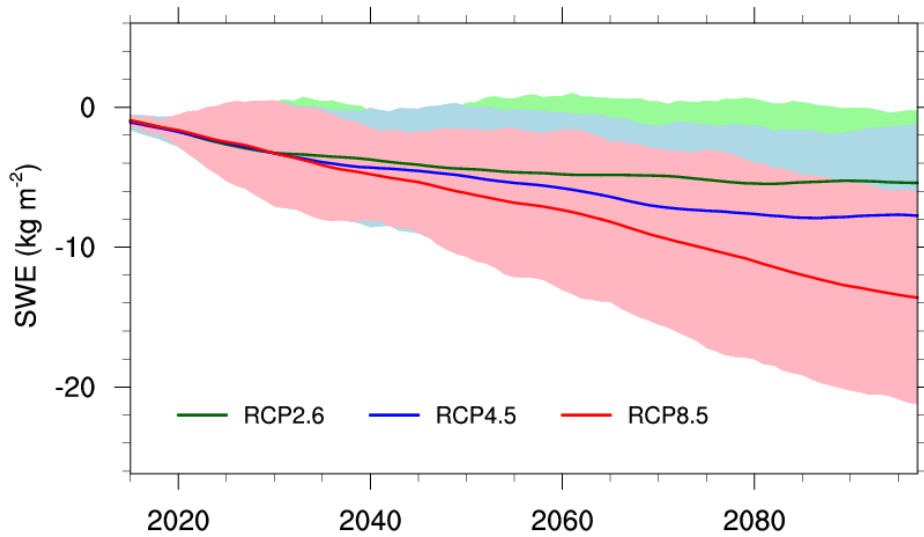
6



1
2
3
4
5

Figure 7. Spatial distributions of projected SWE trends ($\text{kg m}^{-2}/10\text{a}$) between 2006 and 2099 for the three RCPs. Shaded areas represent regions where trends reach 95% significance. The five rows indicate the annual mean, winter, spring, summer, and autumn SWE. The three columns are RCP2.6, RCP4.5, and RCP8.5.

1
2
3



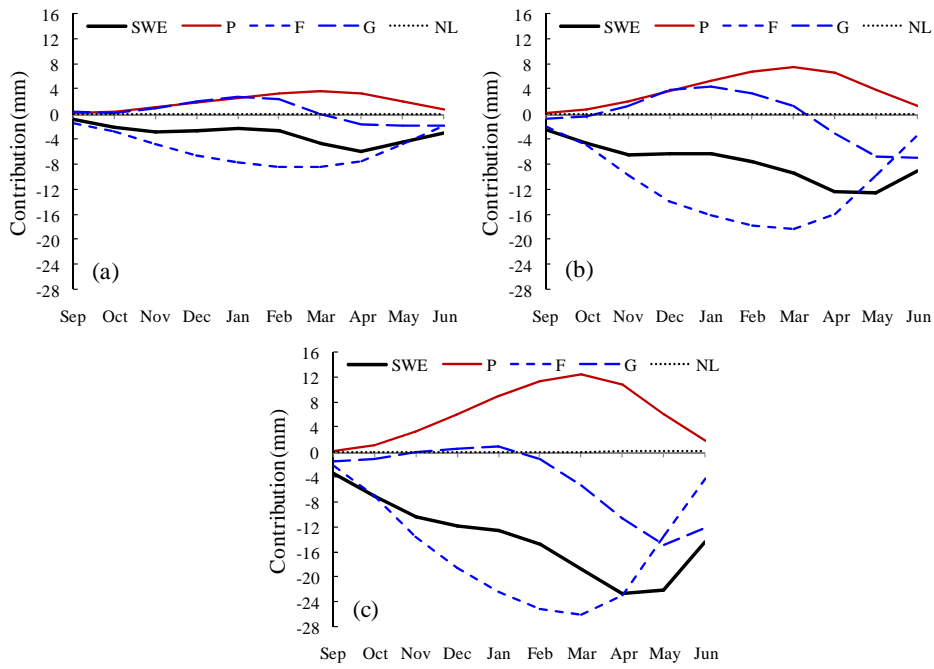
4
5
6
7
8
9
10
11

Figure. 78. Projected changes in mean annual SWE over NH landmasses during 21st century, relative to RP (1986–2005), for all three RCPs (green: RCP2.6; blue: RCP4.5; red: RCP8.5). The mean value for the 1986–2005 reference period is subtracted from all values. Also shown is the multi-model mean for all available models for each scenario. The 10-yr running average is was derived for each model before calculation of the multi-model mean. Shaded areas denote the inter-model standard deviation for each ensemble mean.

1

2

3



4

5

6

7

8

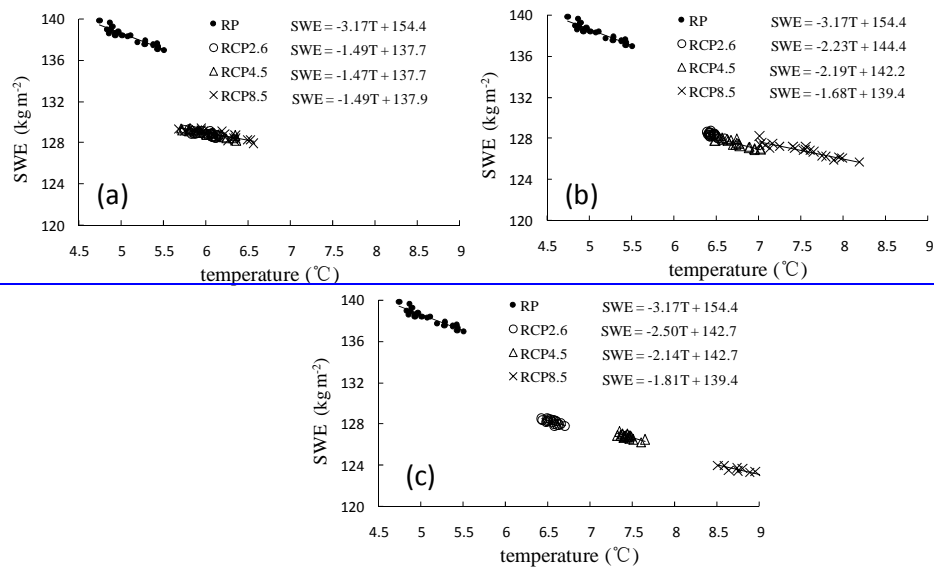
9

10

11

12

Figure 8. Mean changes in SWE decomposed using Equation (4) to show the contribution of changes in precipitation (ΔP), the fraction of solid precipitation (ΔF), the fraction of accumulated snowfall that remains on the ground (ΔG), and nonlinear terms (NL) during the period of 2016-2035 (a), 2046-2065 (b), and 2080-2099 (c) for RCP8.5, relative to the 1986-2005 reference period.



1
2
3 **Figure 9. Sensitivity of SWE to mean annual temperature over NH landmasses, derived**
4 **from three RCPs, for the periods 2016–2035 (a), 2046–2065 (b), and 2080–2099**
5 **(c). The term ‘RP’ indicates the reference period of 1986–2005.**