

Interactive comment on “Spatial patterns in glacier area and elevation changes from 1962 to 2006 in the monsoon-influenced eastern Himalaya” by A. Racoviteanu et al.

M. Pelto

mauri.pelto@nichols.edu

Received and published: 20 September 2014

Racoviteanu et al (2014) provide a useful inventory of glacier change from 1962–2006 in the region along the Nepal-Sikkim border. They further relate the observed changes to basic glacier characteristics further enhancing the paper's value. The satellite image analysis approach is sound and well described. This comment focuses on just one key point glacial lakes with a few minor points.

3963-22 and 3965-7: Glacial lakes at the terminus can affect terminus retreat. This should be an additional parameter to include. Must distinguish between supra-glacial lakes that have developed on the surface of a glacier, from pro-glacial lakes that are

C1839

at the terminus. In spatial domain 2 a series of glaciers just north of Zemu Glacier: Changsang, East Langpo, Jongsang, Middle Lhonak, South Lhonak all terminate in glacial lakes, and some have had rapid retreat during recent decades. Some like Changsang Glacier have seen a recent merging of supra-glacial lakes into a single more appropriately termed pro-glacial terminus lake. Jongsang has a section of terminus that only has supra-glacial lakes. The impact of these lakes on retreat is worth including as a parameter. South and Middle Lhonak in particular have retreated rapidly with lake expansion. The lakes that have developed may have some relict ice cored moraine on their banks, but it is not plausible that the larger lakes indicated by red arrows in Figure 2 are underlain by glacier ice at this point (Figure 1 and 2).

3966-9: Does refer to the South Lhonak as pro-glacial.

Minor Points: 3959-6: The average slope is one useful parameter; however, most of the debris covered glaciers have very low slope ablation zones. Is the slope of the ablation zone a more useful parameter on these? If too difficult to address should at least be mentioned.

3690-24: There is no Section 4.3

3963-11: Why is climate seen as the key instead of the heavier debris cover? What about comparison to the Bhutan record of Bajracharya et al (2013)? This likely supports your point.

3964-22: Are not clean glaciers more sensitive to climate change because of a faster response time and hence more useful as a focus for purely climate change purposes?

3967-7: How valid is such a comparison from one day of temperature reconstructed data that is not from the principal melt season event?

Figure 1: Map of glaciers with glacial lakes at their termini north of Zemu Glacier.

Figure 2: Landsat image from 2103 of glacial lakes north of Zemu Glacier: C=Changsang, E=East Longpo, J=Jongsang, MS=South Lhonak, M=Middle Lhonak.

C1840

C1841

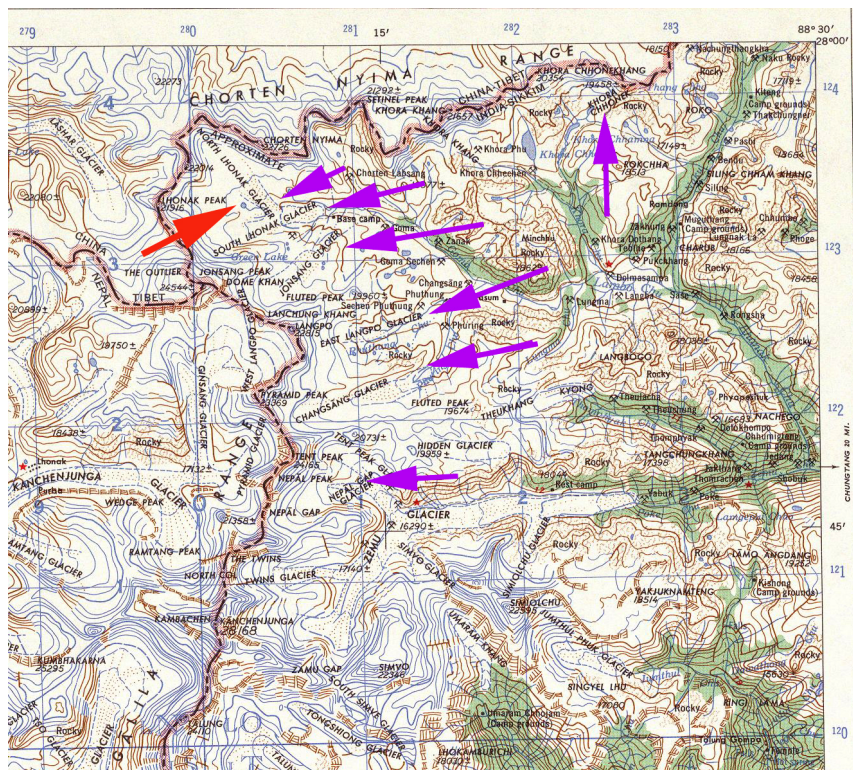


Fig. 1. Map of glaciers with glacial lakes at their termini north of Zemu Glacier.

C1842

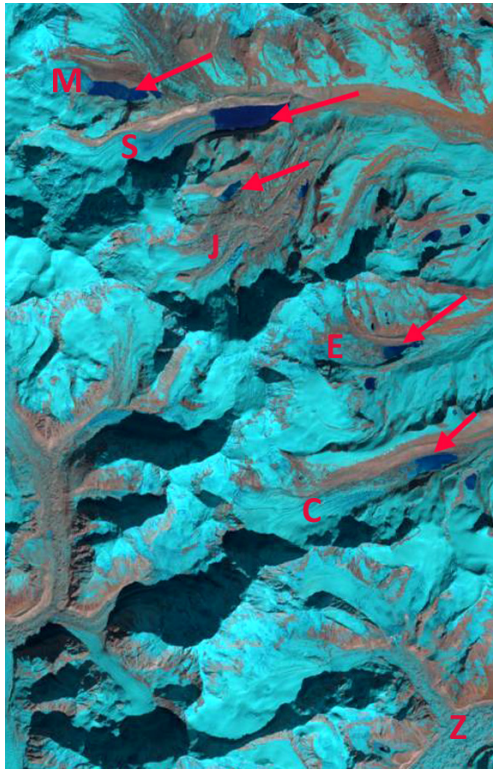


Fig. 2. andsat image from 2013 of glacial lakes north of Zemu Glacier: C=Changsang, E=East Longpo, J=Jongsang, MS=South Lhonak, M=Middle Lhonak.

C1843