

Interactive comment on “The effect of changing sea ice on the vulnerability of Arctic coasts” by K. R. Barnhart et al.

K. R. Barnhart et al.

katy.barnhart@gmail.com

Received and published: 31 July 2014

Please find my comments as an attached word document. I have included a new draft of Figure 16, revised in an attempt to improve clarity.

We thank Dr. Forbes for his comments.

In addition, as a separate comment we have provided a revised version of the manuscript with changes tracked.

Best, Katy Barnhart and coauthors.

Please also note the supplement to this comment:

C1446

Full Screen / Esc

Printer-friendly Version

Interactive Discussion

Discussion Paper



<http://www.the-cryosphere-discuss.net/8/C1446/2014/tcd-8-C1446-2014-supplement.pdf>

Interactive comment on The Cryosphere Discuss., 8, 2277, 2014.

TCD

8, C1446–C1448, 2014

Interactive
Comment

Full Screen / Esc

Printer-friendly Version

Interactive Discussion

Discussion Paper



C1447

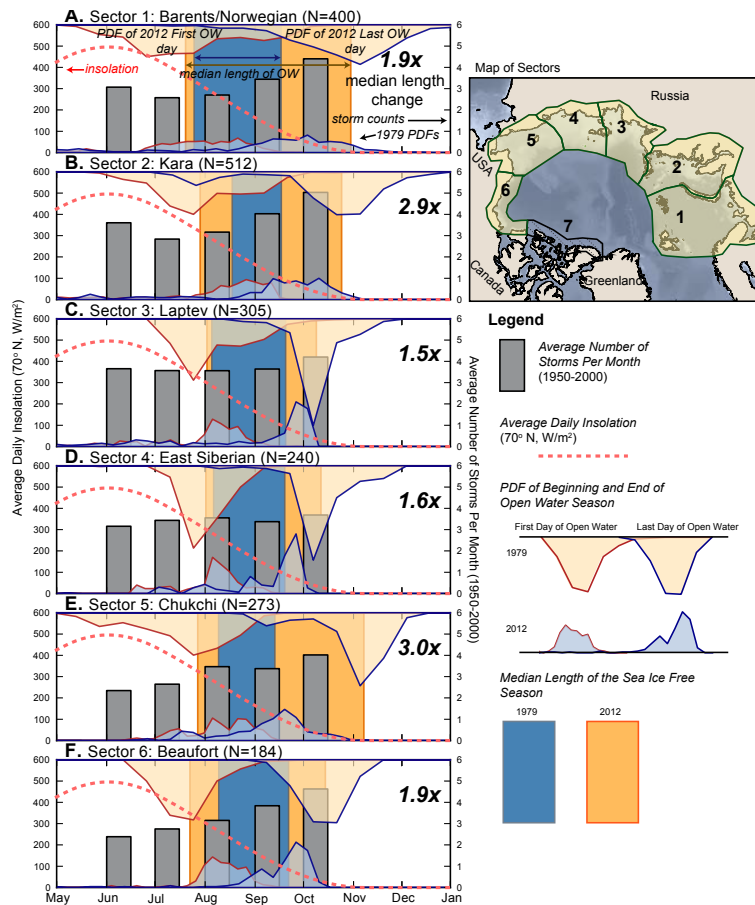


Fig. 1. 16, revised

- Full Screen / Esc
- Printer-friendly Version
- Interactive Discussion
- Discussion Paper

