

# Modelling glacier change in the Everest region, Nepal Himalaya

**J.M. Shea<sup>1</sup>, W.W. Immerzeel<sup>1,2</sup>, P. Wagnon<sup>1,3</sup>, C. Vincent<sup>4</sup>, and S. Bajracharya<sup>1</sup>**

<sup>1</sup>International Centre for Integrated Mountain Development, Kathmandu, Nepal

<sup>2</sup>Department of Physical Geography, Utrecht University, Utrecht, the Netherlands

<sup>3</sup>IRD / UJF - Grenoble 1 / CNRS / G-INP, LTHE UMR 5564, LGGE UMR 5183, Grenoble, F-38402, France

<sup>4</sup>UJF - Grenoble 1 / CNRS, Laboratoire de Glaciologie et Géophysique de l'Environnement (LGGE) UMR 5183, Grenoble, F-38041, France

Correspondence to: Dr. Joseph Shea (joseph.shea@icimod.org)

## Abstract

In this study, we apply a glacier mass balance and ice redistribution model to examine the sensitivity of glaciers in the Everest region of Nepal to climate change. High-resolution temperature and precipitation fields derived from gridded station data, and bias-corrected with independent station observations, are used to drive the historical model from 1961 to 2007. The model is calibrated against geodetically derived estimates of net glacier mass change from 1992 to 2008, termini position of four large glaciers at the end of the calibration period, average velocities observed on selected debris-covered glaciers, and total glacierized area. We integrate field-based observations of glacier mass balance and ice thickness with remotely-sensed observations of decadal glacier change to validate the model. Between 1961 and 2007, the mean modelled volume change over the Dudh Kosi basin is  $-6.4 \pm 1.5 \text{ km}^3$ , a decrease of 15.6% from the original estimated ice volume in 1961. Modelled glacier area change between 1961 and 2007 is  $-101.0 \pm 11.4 \text{ km}^2$ , a decrease of approximately 20% from the initial extent. The modeled glacier sensitivity to future climate change is high. Application of temperature and precipitation anomalies from warm/dry and wet/cold end-members of the CMIP5 RCP4.5 and RCP8.5 ensemble results in sustained mass loss from glaciers in the Everest region through the 21st century.

## 1 Introduction

High-elevation snow and ice cover play pivotal roles in Himalayan hydrologic systems (e.g. Viviroli et al., 2007; Immerzeel et al., 2010; Racoviteanu et al., 2013). In the monsoon-affected portions of the Himalayas, meltwater from seasonal snowpacks and glaciers provides an important source of streamflow during pre- and post-monsoon seasons, while rainfall induced runoff during the monsoon dominates the overall hydrologic cycle (Immerzeel et al., 2013). Against this backdrop, changes in glacier area and volume are expected to have large impacts on the availability of water during the dry seasons (Immerzeel et al., 2010), which will impact agriculture, hydropower generation, and local water resources availability. In the current study, our

main objectives are to calibrate and test a model of glacier mass balance and redistribution, and to present scenarios of catchment-scale future glacier evolution in the Everest region.

## 1.1 Study Area and Climate

The (ICIMOD, 2011) inventory indicates that the Dudh Kosi (or Koshi) basin in central Nepal contains a total glacierized area of approximately 410 km<sup>2</sup> (Figure 1). The region contains some of the world's highest mountain peaks, including Sagarmatha (Mt. Everest), Cho Oyu, Makalu, Lhotse, and Nuptse. The Dudh Kosi River is a major contributor to the Kosi River, which contains nearly one quarter of Nepal's exploitable hydroelectric potential. Approximately 110 km<sup>2</sup>, or 25% of the total glacierized area, is classified as debris-covered (Figure 2), with surface melt rates that are typically lower than those observed on clean glaciers due to the insulating effect of the debris (Reid and Brock, 2010; Lejeune et al., 2013).

The climate of the region is characterized by pronounced seasonality of both temperature and precipitation. At 5000 m (see analysis below), mean daily temperatures range between -7°C and +10°C, with minimum and maximum daily temperatures ranging between -25°C and +10°C. During the monsoon period (June – September), temperatures at 5000 m are greater than 0°C and variability is low. The majority of annual precipitation (approximately 77%, derived from gridded climate fields, see below) falls between June and October during the summer monsoon (Wagnon et al., 2013). An additional 14% of precipitation occurs during the pre-monsoon period (March - May), with little or no precipitation during the post-monsoon and winter seasons. The interaction between moisture advected from the Indian Ocean during the monsoon and the two-step topography of the Dudh Kosi region (foothills, main ranges) results in two spatial maxima of precipitation (Bookhagen and Burbank, 2006).

## 1.2 Himalayan Glaciology

The current status of glaciers varies across the Hindu Kush-Himalayan (HKH) region. Most areas have seen pronounced glacier retreat and downwasting in recent years (Bolch et al., 2012; Kääb et al., 2012; Yao et al., 2012), though some areas, such as the Karakoram and Pamir

ranges, have experienced equilibrium or even slight mass gain (Gardelle et al., 2012; Jacob et al., 2012; Gardelle et al., 2013). In the Everest region (Figure 1), Gardelle et al. (2013) find an average annual rate of mass loss of  $-0.26 \pm 0.13$  m w.e.  $\text{yr}^{-1}$  between 2000 and 2011, while Nuimura et al. (2012) estimate mass loss rates of  $-0.40 \pm 0.25$  m w.e.  $\text{yr}^{-1}$  between 1992 and 2008. Between 2003 and 2009, thinning rates of  $-0.40$  m  $\text{yr}^{-1}$  were estimated from ICESat data (Gardner et al., 2013), which is similar to the 1962-2002 average thinning rate of  $-0.33$  m  $\text{yr}^{-1}$  calculated for glaciers in the Khumbu region (Bolch et al., 2008a, b). Areal extents of glaciers in Sagarmatha National Park decreased 5% during the second half of the 20th century (Bolch et al., 2008b; Salerno et al., 2008; Thakuri et al., 2014). These estimates do not distinguish between debris-covered and clean-ice glaciers.

One consequence of glacier retreat in the Himalayas is the formation of proglacial lakes, which may pose a risk to downstream communities. Terminus retreat at Lumding and Imja glaciers, measured at  $-42$  and  $-34$  m  $\text{yr}^{-1}$ , respectively, between 1976 and 2000 increased to  $-74$  m  $\text{yr}^{-1}$  at both glaciers between 2000 and 2007 (Bajracharya and Mool, 2010). Rapid terminus retreat results in the growth of proglacial lakes which are dammed by lateral and terminal moraines (Bolch et al., 2008b; Benn et al., 2012; Thompson et al., 2012). The failure of moraine dams in the Kosi River basin has led to 15 recorded glacier lake outburst flood (GLOF) events since 1965, with flows up to 100 times greater than average annual flow (Chen et al., 2013), and the frequency of GLOFs in the Himalayas is believed to have increased since the 1940s (Richardson and Reynolds, 2000). Changes in glacier extents and volumes in response to climate change thus have important impacts not only on water resources availability but also on geophysical hazards.

The climate sensitivity of a glacier depends primarily on its mass balance amplitude. Glaciers in wetter climates typically extend to lower elevations, and are thus more sensitive to temperature changes than those in dry climates (Oerlemans and Fortuin, 1992). Himalayan glaciers, and glaciers of the Dudh Kosi in particular, present a unique challenge as observations of temperature and precipitation at high elevations are scarce. Regionally, the climate varies from monsoon-dominated southern slopes to relatively dry leeward high-elevation regions. Accordingly, equilibrium line altitudes (ELAs) in the region vary both spatially and temporally, but

generally range from 5200 m in the south to 5800 m in northern portions of the basin (Williams, 1983; Asahi, 2010; Wagnon et al., 2013). Nearly 80% of the glacierized area in the Dudh Kosi basin lies between 5000 and 6000 m (Figure 2), and the region is expected to be sensitive to climatic changes.

### 1.3 Historical and Projected Climate Trends

Analyses of climate trends in the region are limited, primarily due to the lack of long-term records (Shrestha and Aryal, 2011). Available studies indicate that the mean annual temperatures have increased in the region, and particularly at high elevations (Shrestha et al., 1999; Rangwala et al., 2009; Ohmura, 2012; Rangwala and Miller, 2012). Reported mean annual temperature trends range between 0.025 and 0.06°C yr<sup>-1</sup> for the periods 1971 to 2009 and 1977 to 1994, respectively (Shrestha and Aryal, 2011; Qi et al., 2013). Changes in temperature are particularly important for monsoon-type glaciers, which are sensitive to the elevation of the rain/snow threshold during the monsoon season (Bolch et al., 2012). Results from the CMIP5 (Climate Modelling Intercomparison Project) ensemble suggest that temperatures in the region will increase between 1.3°C and 2.4°C over the period 1961-1990 to 2021-2050 (Lutz et al., 2012), which correspond to rates of 0.021 to 0.040°C yr<sup>-1</sup>.

Precipitation amounts, timing, and phase will affect glacier responses on both annual and decadal timescales. In the greater Himalayas, trends in precipitation totals appear to be mixed and relatively weak (Mirza et al., 1998; Gautam et al., 2010; Dimri and Dash, 2012; Qi et al., 2013), though the observational network is composed mostly of low-elevation valley stations that may not reflect changes in snowfall amounts at higher elevations. General circulation model projections suggest both increased monsoon precipitation (Kripalani et al., 2007) and delayed monsoon onset (Ashfaq et al., 2009; Mölg et al., 2012) in the 21st century, while the change in total annual precipitation is mixed. In the Himalayas, the CMIP5 ensemble shows projected changes in precipitation between -8% to +15% (Lutz et al., 2012; Palazzi et al., 2013).

## 1.4 Models of Glacier Change

In spite of the recent observed changes in glaciers in the Everest region, the reported climatic trends, the expected glacier sensitivity to climatic change, and the importance of glacier water resources in the region, few studies have attempted to model the historical or future response of these glaciers to climate change (Immerzeel et al., 2012, 2013). Empirical mass balance and snow and ice melt models have been developed from field observations (Ageta and Higuchi, 1984; Ageta and Kadota, 1992; Nakawo et al., 1999) and reanalysis products (Fujita and Nuimura, 2011; Rasmussen, 2013), and such approaches have been used to quantify glacier contributions to streamflow (Racoviteanu et al., 2013; Nepal et al., 2013). Projections of higher ELAs in the region (Fujita and Nuimura, 2011) and volume area-scaling approaches (Shi and Liu, 2000; Cogley, 2011) indicate continued mass wastage in the future, yet impact studies on the response of glaciers to climate change require models that link mass balance processes with representations of glacier dynamics.

One and two-dimensional models of glacier dynamics have been applied previously to the Khumbu Glacier (Naito et al., 2000) and the East Rongbuk Glacier (Zhang et al., 2013), respectively. However, these and higher-order models of glacier dynamics are severely limited by input data availability (e.g. bed topography, ice temperatures, basal water pressure) and uncertainties in key model parameters, and have not been applied at catchment scales in the region. Debris-covered glaciers, which compose 25% of total glacierized area, present additional modelling challenges, and validation is also limited by the availability of data. Relatively coarse methods of simulating future glacier change (e.g. Stahl et al., 2008) can be improved by applying models that can reasonably simulate key glaciological parameters (thickness, velocity, and mass redistribution).

The main objective of this study is to apply a glacier mass balance and redistribution model to the Dudh Koshi river basin, Nepal. To accomplish this, we (1) develop downscaling routines for temperature and precipitation; (2) calibrate and test the model with available field and remotely-sensed observations; and (3) explore the modelled sensitivity of glaciers in the Everest region

to future climate change with a suite of temperature and precipitation changes from the CMIP5 ensemble.

## 2 Data and Methods

### 2.1 Daily Climate Fields

5 There are few observations of temperature and precipitation in the basin, and no temperature records longer than 15 years are available. To generate high-resolution fields of temperature ( $T$ ) and precipitation ( $P$ ) as inputs to the model, we use data from the APHRODITE (Asian Precipitation - Highly-Resolved Observational Data Integration Towards Evaluation of Water Resources) project (Yatagai et al., 2009; Yatagai et al., 2012). APHRODITE products have been  
10 previously used to test regional climate model simulations in northern India (Mathison et al., 2012) and the western Himalaya (Dimri et al., 2013), and to compare precipitation datasets in the Himalayan region (Palazzi et al., 2013). For this study, we use APHRODITE  $T$  fields (V1204R1) that are based on daily station anomalies from climatological means, interpolated on  $0.05^\circ$  grids and then resampled to  $0.25^\circ$  fields and we refer to Yatagai et al. (2012) for more  
15 details. The APHRODITE  $P$  fields (V1101) are based on a similar technique using precipitation ratios, but incorporate a weighted interpolation scheme based on topographical considerations (Yatagai et al., 2012).

To generate high-resolution fields of  $T$  and  $P$  for the glacier mass balance model, we extract a  $196 (14 \times 14)$  grid cell subset of the daily APHRODITE  $T$  and  $P$  fields that covers the Koshi  
20 basin (Figure 1). Approximate elevations for each  $0.25^\circ$  grid cell are extracted from a resampled gap-filled Shuttle Radar Topography Mission (SRTM V4; Farr et al., 2007) digital elevation model (DEM). Based on this subset we derive relations between elevation and temperature and precipitation respectively at coarse resolution. We then use these relations in combination with the 90 m SRTM DEM to produce high resolution daily climate fields.

### 2.1.1 Temperature

Downscaled temperature fields at daily 90 m resolution are computed as :

$$T_Z = \gamma_T Z + T_0 - C_{DOY} \quad (1)$$

where  $\gamma_T$  is the daily vertical temperature gradient (Figure 3) derived from the 0.25° APHRDITE temperatures and SRTM elevations,  $T_0$  is the daily temperature intercept, and  $C_{DOY}$  is a bias correction based on the day of year (Figure 4). The bias-correction factor is computed from the mean daily temperature difference between observed and estimated mean daily temperatures at four stations operated by the Italian Everest-K2-National Research Centre (EVK2CNR; Figure 1, Table 1), and it ranges from 3 to 6°C. The EVK2CNR stations are independent of the APHRDITE product.

### 2.1.2 Precipitation

To calculate high-resolution daily precipitation fields from the APHRDITE subset, we prescribe daily precipitation-elevation functions from the 0.25° APHRDITE precipitation fields and resampled SRTM data. For each day, we calculate the mean precipitation in 500 m elevation bins ( $\bar{P}_{500}$ ), and prescribe a fitted linear interpolation function to estimate precipitation on the 90 m SRTM DEM (Figure 5).

As APHRDITE fields are based on interpolated station data (Yatagai et al., 2012), there is a large uncertainty in the precipitation at high elevations. Independent tests of the precipitation downscaling approach were conducted by comparing precipitation observations from the EVK2CNR stations with precipitation estimated using the station elevation and the daily precipitation-elevation functions (Figure 6). As EVK2CNR stations are not capable of measuring solid precipitation (Wagnon et al., 2013), we only examine days where only liquid precipitation ( $T > 0$ ) is expected.

While orographic forcing of moist air masses typically produces increased precipitation with elevation, in very high elevation regions (i.e. those greater than 4000 m) both observations and models indicate that precipitation totals will decrease above a certain elevation (Harper and



Humphrey, 2003; Mölg et al., 2009). This is due in part to the drying effect from upwind orographic forcing, but is also related to the low column-averaged water vapour content indicated by the Clausius-Clapeyron relation. Given that there are no precipitation observations at elevations above 5300 m, and available evidence suggests that precipitation will likely decrease at high elevations, we scale estimated precipitation using a correction factor  $p_{cor}$ :

$$P(Z) = \begin{cases} P(Z), & Z < Z_c \\ P(Z)p_{cor}, & Z_c \leq Z < Z_m \\ 0, & Z \geq Z_m \end{cases} \quad (2)$$

where  $p_{cor}$  decreases from 1 at the height of a calibrated threshold elevation ( $Z_c$ ; Table 2) to 0 at  $Z_m$ , set here to 7500 m:

$$p_{cor} = 1 - (Z - Z_c)/(Z_m - Z_c) \quad (3)$$

Above 7500 m, we assume that precipitation amounts minus wind erosion and sublimation (Wagnon et al., 2013) are likely to be negligible. The total area above 7500 m represents only 1.2% of the total basin area.

## 2.2 Glacier Mass Balance and Redistribution

Following the methods of Immerzeel et al. (2012) and Immerzeel et al. (2013), daily accumulation and ablation between 1961 and 2007 are estimated from the gridded  $T$  and  $P$  fields. All calculations are based on the 90 m SRTM DEM. Daily accumulation is equal to the total precipitation when  $T < 0^\circ\text{C}$ , which is a conservative threshold with respect to other studies that have used values of  $1.5$  or  $2^\circ\text{C}$  (Oerlemans and Fortuin, 1992), but this value has been used in previous Himalayan models (Immerzeel et al., 2012). Daily ablation is estimated using a modified degree day factor ( $ddf_M$ ) that varies with DEM-derived aspect ( $\theta$ ) and surface type:

$$ddf_M = ddf (1 - R_{exp} \cos \theta) \quad (4)$$

where  $ddf$  is the initial melt factor (in  $\text{mm } ^\circ\text{C}^{-1} \text{ d}^{-1}$ ), and  $R_{exp}$  is a factor which quantifies the aspect (or exposure) dependence of  $ddf$  (Immerzeel et al., 2012). Initial values for melt factors

for snow, ice, and debris covered glaciers (Azam et al., 2014) are given in Table 2. The extent of debris-covered glaciers was extracted from the ICIMOD (2011) glacier inventory.

To redistribute mass from accumulation to ablation areas, we use a simplified flow model which assumes that basal sliding is the principal process for glacier movement, and neglects deformational flow. While cold-based glaciers have been observed on the Tibetan Plateau (Liu et al., 2009), warm-based glaciers and polythermal regimes have been identified on the monsoon-influenced southern slopes of the Himalayas (Mae et al., 1975; Ageta and Higuchi, 1984; Kääb, 2005; Hewitt, 2007). Our assumption in this case is a necessary simplification of the sliding and deformational components of ice flow, that have not yet been modelled at the basin scale in the Himalayas.

Glacier motion is modeled as slow, viscous flow using Weertman's sliding law (Weertman, 1957), which describes glacier movement as a combination of both pressure melting and ice creep near the glacier bed. Glacier flow is assumed to be proportional to the basal shear stress ( $\tau_b$ , Pa):

$$\tau_b \approx v^2 R u^{\frac{2}{n+1}}. \quad (5)$$

Here,  $v$  (unitless) is a measure of bedrock roughness,  $R$  ( $\text{Pa m}^{-2} \text{ s}$ ) is a material roughness coefficient,  $u$  is the sliding speed ( $\text{m s}^{-1}$ ) and  $n$  (unitless) is the creep constant of Glen's flow law, here assumed to equal 3 (Glen, 1955). The roughness of the bedrock ( $v$ ) is defined as the dimension of objects on the bedrock divided by the distance between them. Smaller values for  $v$  indicate more effective regelation.  $R$  is a material roughness coefficient that controls the viscous shearing (Fowler, 2010). Basal shear stress ( $\tau_b$ ) is defined as

$$\tau_b = \rho g H \sin \beta \quad (6)$$

where  $\rho$  is ice density ( $\text{kg m}^{-3}$ ),  $g$  is gravitational acceleration ( $\text{m s}^{-2}$ ),  $H$  is ice thickness (m), and  $\beta$  is surface slope ( $^\circ$ ). We assume that motion occurs only when basal shear stress exceeds the equilibrium shear stress ( $\tau_0 = 80000 \text{ N m}^{-2}$  Immerzeel et al., 2012), and combine Eqs. [5] and [6] to derive the glacier velocity:

$$u^{\frac{2}{n+1}} = \frac{\max(0, \tau_b - \tau_0)}{v^2 R}. \quad (7)$$

For each time-step, glacier movement in each cell is thus modelled as a function of slope, ice thickness, and assumed bedrock roughness. The total outgoing ice flux at each time step is then determined by the glacier velocity, the horizontal resolution, and the estimated ice depth. Ice transported out of a specific cell is distributed to all neighbouring downstream cells based on slope, with steeper cells receiving a greater share of the ice flux.

As avalanches can contribute significantly to glacier accumulation in steep mountainous terrain (Inoue, 1977; Scherler et al., 2011b), the model incorporates an avalanching component which redistributes accumulated snowfall (Bernhardt and Schulz, 2010). The approach assumes that all snow in a given cell is transported to the downstream cell with the steepest slope whenever snow holding depth and a minimum slope angle is exceeded. The snow holding depth is deep in flat areas and shallow in steep areas and decreases exponentially with increasing slope angle.

Based on field observations and an analysis of the slopes of glacierized pixels in the catchment (Figure 7), we assign a threshold avalanching angle ( $\beta_{TH}$ ) of  $50^\circ$ . Change in ice thickness at each time step is thus the net result of ice flow through the cell, ablation, and accumulation from both precipitation and avalanching. Changes in glacier area and volume are calculated at daily timesteps, and pixels with a snow water equivalent greater than 0.2 m w.e. are classified as glacier. The model does not assume steady-state conditions, and reported changes in volume and area thus represent transient states within the model.

## 2.3 Model Initialization

Initial ice thickness for each glacierized grid cell is derived from Eq. 6:

$$H = \frac{\tau_0}{\rho g \sin \beta}. \quad (8)$$

with a minimum prescribed slope of  $1.5^\circ$ . We use  $\tau_0$  here, as the actual basal shear stress depends on the ice thickness. In the Dudh Kosi basin, Eq.[8] produces a total estimated glacier volume of  $32.9 \text{ km}^3$ , based on the ICIMOD (2011) glacier inventory and SRTM DEM. While volume-area scaling relations are uncertain (Frey et al., 2013), empirical relations from Huss

and Farinotti (2012) and Radić and Hock (2010) applied to individual glaciers generate basin-wide volume estimates of 31.9 and 27.5 km<sup>3</sup>, respectively, which lends some support to the approach used here.

From the initial ice thicknesses we estimate glacier thicknesses and extents in 1961 by driving the glacier mass balance and redistribution model with modified APHRODITE temperature fields. To simulate the observed climate in the region prior to 1961, temperatures in the initialization run are decreased by  $-0.025\text{ }^{\circ}\text{C yr}^{-1}$  (Shrestha and Aryal, 2011), for a total decrease of  $-1.2^{\circ}\text{C}$  over the 47-year initialization period. Precipitation is left unchanged in the model initialization, and we use uncalibrated model parameters (Table 2).

Mass change at the end of the 47-year initialization period is close to zero, indicating that near-equilibrium conditions have been realized. Additional runs of the initialization period, with temperatures fixed at  $-1.2^{\circ}\text{C}$ , yield relatively small changes in glacier thickness (Figure 8). However, it is possible that there are significant uncertainties in our estimates of initial (1961) thicknesses and extents, given the forcings and parameter set used, and the lag in glacier geometry responses to climate forcings.

## 2.4 Model Calibration

From the modelled 1961 ice thicknesses and extents, the model is calibrated with six parameters: degree-day factors for clean ice ( $ddf_C$ ), debris-covered ice ( $ddf_I$ ), snow ( $ddf_S$ ), and debris covered ice on the Khumbu Glacier ( $ddf_K$ ), material roughness coefficient  $R$ , and elevation of the precipitation maximum  $Z_C$  (Table 2). Initial simulations showed anomalous flow velocities of the Khumbu glacier which may be due to the assumption that basal sliding is the main process of movement. This may not hold given the steep ice fall above the glacier tongue and the large high altitude accumulation area. We have corrected for this by calibrating a specific melt factor for this glacier, though improved representation of the glacier dynamics should reduce the need for a separate  $ddf_K$ . Twenty parameter sets (Table 3) were developed by varying the six calibration factors within specified ranges (Table 2). Initial values for each parameter were selected from published studies.

For each of the twenty runs (Table 4), we quantify the model skill by scoring (a) modelled and observed glacier extents at the termini of four large glaciers in the catchment (ICIMOD, 2011), (b) the geodetically-derived mean basin-wide glacier mass balance of  $-0.40 \text{ m w.e. yr}^{-1}$  over the period 1992 - 2008 (Nuimura et al., 2012), (c) a mean velocity of  $10 \text{ m yr}^{-1}$  for debris-covered glaciers (Nakawo et al., 1999; Quincey et al., 2009), and (d) the total glacierized area in 2007 ( $410 \text{ km}^2$ ; ICIMOD, 2011). These tests gauge the ability of the model to accurately reproduce key glacier parameters: extent, mass change, and velocity. Scores are derived from the difference between modelled and observed quantities, with a score of zero indicating a perfect match. Scores for all four metrics are added to obtain an overall ranking of the 20 parameter sets, and are weighted equally.

The glacier extent score denotes the relative deviation from a perfect match of the four large glacier termini at the end of the calibration period (Figure 1). There are eight test polygons in total that include ice-covered and adjacent ice-free areas. For example, if only 20% of the glacier polygons in Figure 1 are ice covered then the score equals 0.8. The mass balance score is based on the relative offset from the catchment mean mass balance of  $-0.40 \text{ m w.e. yr}^{-1}$  over the period 1992 – 2008:

$$S_{MB} = |(B_m / -0.4) - 1| \quad (9)$$

If the modelled mean mass balance ( $B_m$ ) equals  $-0.20 \text{ m w.e. yr}^{-1}$  then the mass balance score ( $S_{MB}$ ) is 0.5. The total ice area score is based on the departure from the total glacierised area at the end of the simulation ( $410 \text{ km}^2$  (ICIMOD, 2011)). If the simulated ice extent is  $300 \text{ km}^2$  then the score is 0.27 ( $(410-300)/410$ ). Finally the flow velocity score quantifies the deviation from a mean glacier velocity of debris covered tongues from 1992 to 2008 ( $10 \text{ m yr}^{-1}$ ), e.g. if the average simulated flow velocity is  $2 \text{ m yr}^{-1}$ , then the score is 0.8. The final score used to select the optimal parameter set is a simple addition of the four scores.

## 2.5 Model Validation

Temperature and precipitation fields developed for this study were tested independently using point observations of mean daily temperature and total daily precipitation at the four EVK2NCR

sites. We calculate mean bias error (MBE) and root mean square error (RMSE) to evaluate the skill of the elevation-based downscaling.

To validate the calibrated glacier mass balance and redistribution model, model outputs are compared against the following independent datasets:

- Ice thickness profiles derived from ground-penetrating radar (GPR) at Mera Glacier (Wagnon et al., 2013) and Changri Nup Glacier (Vincent, unpublished data).
- Annual mass balance and glacier mass balance gradients calculated from surface observations at Mera Glacier (Wagnon et al., 2013)
- Decadal glacier extents (1990, 2000, 2010) extracted from Landsat imagery (Bajracharya et al., 2014)
- Basin-wide mean annual mass balance from 2000-2011 (Gardelle et al., 2013), and from 1970-2007 (Bolch et al., 2011)

## 2.6 Glacier Sensitivity to Future Climate Change

To examine the sensitivity of modelled glaciers to future climate change, we drive the calibrated model with temperature and precipitation anomalies prescribed from eight CMIP5 climate simulations that represent cold/warm and dry/wet end-members (Table 5; Immerzeel et al., 2013). Decadal  $T$  and  $P$  anomalies relative to 1961-1990 are extracted from the CMIP5 end-members. Temperature trends are strong in all CMIP5 simulations, with ensemble mean temperature increases to 2100 as great as  $+8^{\circ}\text{C}$  in late winter and early spring (January - April). Precipitation anomalies do not show any significant trends, and vary between 0.4 and 1.8 times the baseline period. Uncertainty in our scenarios of future climate change are examined through the mean and standard deviation of modelled ice areas and volumes derived from the eight CMIP5 models. As the model is empirically-based and we assume only changes in  $T$  and  $P$  (all other state and input variables remain unchanged), we stress that the resulting glacier change realizations are a reflection of the modelled sensitivity to climate change, as opposed to physically-based projections.

### 3 Results

#### 3.1 APHRODITE Downscaling

Daily vertical temperature gradients calculated from the APHRODITE temperature fields and resampled SRTM range from  $-0.010$  to  $-0.004$   $^{\circ}\text{C m}^{-1}$ , and are highly significant (Figure 3). Calculated  $\gamma_T$  are most negative in the pre-monsoon (mid-April), and least negative during the active phase of the summer monsoon (mid-June to late August). This is likely a function of the increased moisture advection in the monsoon and pre-monsoon periods, which results in a less negative moist adiabatic lapse rate. These findings are consistent with temperature gradient observations between  $-0.0046$   $^{\circ}\text{C m}^{-1}$  (monsoon) and  $-0.0064$   $^{\circ}\text{C m}^{-1}$  (pre-monsoon) in a nearby Himalayan catchment (Immerzeel et al., 2014b). The standard deviation in calculated  $\gamma_T$  is lowest during the monsoon, and greatest in the winter.

At all four EVK2CNR stations, daily temperatures estimated from APHRODITE vertical gradients are greater than observed, with mean daily differences ranging from  $-1^{\circ}\text{C}$  to  $+8^{\circ}\text{C}$  (Figure 4). Micro-meteorological conditions may contribute to the larger biases observed at Pyramide (winter) and Pheriche (summer). During the summer monsoon period (mid-June to mid-September), the mean difference for all stations is approximately  $5^{\circ}\text{C}$ . We develop a bias correction for the day of year (DOY) based on the mean temperature bias from the four stations, which ranges from  $3.22$  to  $6.00$   $^{\circ}\text{C}$ . The largest bias coincides with the approximate onset of the summer monsoon (DOY 150, or 31 May). A possible mechanism for this is the pre-monsoon increase in humidity at lower elevations, which would be well-represented in the gridded APHRODITE data, but not at the higher elevation EVK2CNR stations. The increased humidity would result in a less negative derived temperature gradient, and thus greater errors at the high-elevation stations. The variability in calculated temperature gradients is sharply reduced at onset of the monsoon, which supports this hypothesis. Bias-corrected estimates of daily temperature (Figure 9) have root mean squared errors (RMSE) of  $1.21$  to  $2.07$   $^{\circ}\text{C}$ , and mean bias errors (MBE) of  $-0.87$  to  $0.63$   $^{\circ}\text{C}$ .

Based on the calculated daily temperature gradients, intercepts, and the bias correction, we estimate the height of the  $0^{\circ}\text{C}$  isotherm ( $Z_{T=0}$ ) for the period 1961-2007 to examine melt potential

and snowline elevations. Mean monthly values of  $Z_{T=0}$  range from 3200 m (January) to 5800 m (July), though it can reach elevations of over 6500 m on occasion. This corresponds to meteorological observations from Langtang Valley, Nepal (Shea et al., 2015), and from the Khumbu Valley (<http://www.the-cryosphere-discuss.net/7/C1879/2013/tcd-7-C1879-2013.pdf>).

Daily precipitation-elevation functions (Figure 5) exhibit strong decreases in precipitation above 4000 m, particularly in the monsoon and pre-monsoon periods. Absolute precipitation totals are greatest during the monsoon period, but large precipitation events can still occur in the post-monsoon period (October - November). As often observed in high-elevation environments, daily precipitation totals observed at the EVK2CNR stations are not well captured by the downscaling process (Figure 6). This is likely due to the difficulties in estimating precipitation in complex terrain (Immerzeel et al., 2012; Pellicciotti et al., 2012), and to errors in the precipitation measurements. For daily liquid precipitation ( $T > 0^{\circ}\text{C}$ ), RMSE range between 2.05 and 8.21 mm, while MBE range from -0.85 to 1.77 mm. However, accumulated precipitation totals (Figure 6) and mean monthly precipitation values show greater coherence, which lends some support for the downscaling approach used. At Pyramid (5035 m), the highest station with precipitation observations, the fit between cumulative predicted and observed precipitation is quite close. However, at Pheriche (4260 m), predicted precipitation is nearly double that observed over the period of record, which suggests that further refinements to the precipitation downscaling method are needed.

## 3.2 Model Results and Validation

For the calibration runs, we report here volume and area values averaged between 1 November and 31 January. Reported uncertainties are the standard deviation in modelled values from the 20 simulations. Modelled ice volumes from the 20 calibration runs (Figure 10) decrease from 41.0 km<sup>3</sup> in 1961 to between 31.6 and 37.1 km<sup>3</sup> in 2007, with a 20-member mean of  $34.5 \pm 1.5$  km<sup>3</sup> at the end of the simulation period. The ensemble mean modelled glacierized area in the calibration runs decreases from 499 km<sup>2</sup> to  $392 \pm 11$  km<sup>2</sup>, with a final range of 374 to 397 km<sup>2</sup>.

Parameters for the calibrated model were chosen from Run 5, which had the lowest additive score of the 20 parameter sets (Table 4). Run 5 generates glacier volume and area totals that are



lower than the multi-model mean (Figure 10), but are within the standard deviation of all models. The selected parameter set contains degree-day factors (Table 2) that are all slightly higher than those observed by Azam et al. (2014) at Chhota Shigri Glacier, but are similar to values obtained for snow and ice by Singh et al. (2000) at Dokriani Glacier, Garwhal Himalaya. The value of the material roughness coefficient in the selected parameter set lies between the values used previously in Baltoro (Pakistan) and Langtang (Nepal, Figure 1) catchments (Immerzeel et al., 2013, Supplementary Material).

Spatially distributed output from the calibrated model (Run 5), 1961-2007, is summarized in Figure 11. Mean annual ablation (Figure 11A) ranges from 0 to 4.00 m w.e.  $\text{yr}^{-1}$ , though most modelled values are less than 1.80 m w.e.  $\text{yr}^{-1}$ . Debris-covered termini, despite having lower degree day factors, are nevertheless subjected to large melt rates due to their relatively low elevation and consequently higher temperatures. Our model generates maximum melt rates at the transition between debris-covered and clean glacier ice, at elevations of approximately 5000 m (Figure 2). This is consistent with geodetic observations of mass change in the catchment (e.g. Bolch et al., 2008b). Maximum mean annual snowfall (Figure 11B) amounts of up to 0.50 m w.e.  $\text{yr}^{-1}$  are observed at 6268 m (the calibrated value of  $Z_C$ , Table 2), but due to the precipitation scaling function (Eq. [2]) the highest peaks receive zero snowfall amounts. The calibrated height of  $Z_C$  (6268 m) is similar to the elevation of maximum snowfall (between 6200 and 6300 m) estimated for the Annapurna range in mid-Nepal (Figure 1; Harper and Humphrey, 2003).

Modelled glacier velocities during the calibration period are less than 10 m  $\text{yr}^{-1}$  over debris-covered glacier termini, and between 30 and 100 m  $\text{yr}^{-1}$  between the accumulation and ablation zones. While there are differences in both the spatial pattern and magnitude of modelled and observed velocities (e.g. Quincey et al., 2009), we feel that our simplification of glacier dynamics is unavoidable in the current study, and the development of higher-order physically-based models will lead to improved representations of glacier flow.

### 3.2.1 Mass Balance

Over the entire domain, modelled mean annual mass balances ( $b_a$ ; Figure 11C) range from -4.6 to +3.0 m w.e.yr<sup>-1</sup>, with the majority of values falling between -1.4 and +0.1 m w.e.yr<sup>-1</sup>. The spatial patterns of modelled annual mass balance are consistent with the geodetic estimates of mass change between 2000 and 2010, and our modelled basin-wide mass balance of -0.33 m w.e.yr<sup>-1</sup> is only slightly more negative than the basin-wide estimates of  $-0.26 \pm 0.13$  m w.e.yr<sup>-1</sup> given by Gardelle et al. (2013), and  $-0.27 \pm 0.08$  m w.e. yr<sup>-1</sup> given by Bolch et al. (2011) for the Khumbu reigon only.

The overall Dudh Kosi mass balance gradient (Run 5), calculated from median modelled  $b_a$  for all glacierized cells in 100 m intervals between 4850 and 5650 m, is equivalent to 0.27 m w.e. (100 m)<sup>-1</sup> (Figure 12). *The range of mass balance gradients for the other 19 parameter sets ranges from 0.10 to 0.34 m w.e. (100 m)<sup>-1</sup>. The mass balance gradient from run 5 gives a basin-wide ELA at approximately 5500 m, which agrees with previously published estimates (Williams, 1983; Asahi, 2010; Wagnon et al., 2013). Mass balance gradients at Mera and Naulek glaciers are approximately 0.40 and 0.68 m w.e. (100 m)<sup>-1</sup>, respectively, between 5350 and 5600 m. These values compare well with the gradients of 0.48 and 0.85 m w.e (100 m)<sup>-1</sup> observed over the same elevation range at Mera and Naulek between 2007 and 2012 (Wagnon et al., 2013). Calculated mass balance gradients from the different parameter sets range from 0.31 to 0.35 m w.e (100 m)<sup>-1</sup> at Mera Glacier, and from 0.46 to 0.72 m w.e (100 m)<sup>-1</sup> at Naulek Glacier (Figure 12).*

Modelled annual mass balances ( $B_a$ ) at Mera Glacier (1961-2007) range between -1.45 and +0.11 m w.e. (Figure 13), *with low variability amongst the different parameter sets*. Surface mass balance observations at the same site from 2007 to 2012 range between -0.67 and +0.46 m w.e. (Wagnon et al., 2013). As model and observation periods do not overlap, direct comparisons between modelled and observed mass balances are not possible. However, the mean mass balance observed at Mera Glacier between 2007 and 2012 is -0.08 m w.e., whereas the mean modelled mass balance between 2000 and 2006 is -0.16 m w.e. We note that our reconstructed mass balance series at Mera Glacier shows strong similarities to the reconstructed

mass balance at Chhota Shigri Glacier (Azam et al., 2014), with balanced conditions in the late 1980s and early 1990s. Standard deviations of observed and modelled mass balance are 0.51 and 0.29 m w.e., respectively, and the greater variability in observed  $b_a$  is likely linked to the short observation period (5 years) and to enhanced local variability which cannot be captured with downscaled climate fields. The mass balance model, although it may underestimate the inter-annual variability, is able to simulate a surface mass balance which is in a plausible and realistic range.

### 3.2.2 Modelled and Observed Glacier Thickness

At the end of the calibrated run (1961-2007), modelled ice thicknesses range between 0 and 620 m, though 98% of these are less than 205 m (Figure 11D). Similar ice thicknesses have been estimated for the large debris-covered Gangotri Glacier, Indian Himalaya, using slope, surface velocities, and simple flow laws (Gantayat et al., 2014). Due to the model formulation, low-angle slopes on glacier termini may result in unrealistic estimates of ice depth, and a minimum surface slope of  $1.5^\circ$  is prescribed in the model. Radio-echo surveys in 1999 indicated that centerline ice thicknesses on the Khumbu Glacier decreased from approximately 400 m at Base Camp to less than 100 m near the terminus (Gades et al., 2000). Our model accurately captures this decrease in the upper portions, but overestimates ice thickness in the relatively flat terminus. Recent observations of ice thickness obtained from ground penetrating radar (GPR) surveys in the basin are examined in detail below.

Estimates of glacier thickness extracted from the calibrated model and are compared with depth profiles found with GPR surveys conducted at Mera Glacier (Wagnon et al., 2013) and Changri Nup Glacier (C. Vincent, unpublished data). To facilitate the comparison, we obtained surface elevations and bedrock depths from the GPR surveys, and we matched these to the modeled ice thicknesses of the corresponding pixels (Figure 14). At the lower elevation profile on Mera Glacier (5350 m), the shape of the bedrock profile is similar to the model, but ice thicknesses are approximately half what is observed or less. This may be due in part to the surface slope extracted from the DEM, which controls the modelled ice thickness. The transect at 5350 m was collected in a flat section between two steeper slopes, which would likely be

mapped as a steep slope in the DEM. For the profile at 5520 m both the shape and the depths of the bedrock profile are generally well-captured by the model. At the Changri Nup cross section, which lies on a relatively flat section of the main glacier body, modelled ice depths are approximately 2/3 of the observed. *Modelled ice depths do not appear to be highly sensitive to the range of model parameters used in the 20 calibration runs, though variability is higher for Mera Glacier than for Changri Nup.*

### 3.2.3 Modelled and Observed Glacier Extents and Shrinkage

Modelled historical changes in glacier area (Figure 10) exhibit greater variability than modelled ice volumes. This is largely due to the sensitivity of the modelled glacier area to large snowfall events, as snowfall amounts greater than the 0.2 m w.e. threshold are classified as glacier. To compare modelled and observed extents we use the mean extent at the end of the ablation season (01 November - 31 January).

Using semi-automated classifications of Landsat imagery, glacier extents in the Dudh Kosi basin were constructed for 1990, 2000, and 2010 (ICIMOD, 2011; Bajracharya et al., 2014, available at rds.icimod.org). As the glacier change signal is greatest at lower elevations, and errors in glacier delineation due to persistent snow cover are possible at higher elevations, we consider the change in glacier area below 5500 m, which roughly equals the equilibrium line altitude in the catchment.

*Below 5500 m, the observed rate of glacier area change in the Dudh Kosi was  $-0.61\% \text{ yr}^{-1}$  between 1990 and 2000, and  $-0.79\% \text{ yr}^{-1}$  between 2000 and 2010. For the 20 parameter sets, modelled rates of glacier area change below 5500 m (Figure 15) vary between  $-0.24\%$  and  $0.41\% \text{ yr}^{-1}$  (1990 - 2000) and  $-0.54$  and  $-0.85\% \text{ yr}^{-1}$  (2000 - 2007) for the twenty parameter sets. The calibrated run (Run 5) gives area change rates of  $-0.36$  and  $-0.75\% \text{ yr}^{-1}$  for the 1990 - 2000 and 2000-2007 periods, respectively. Both modelled and observed glacier change are of similar magnitudes, and both show a consistent trend of increasing area loss, which is corroborated by other studies in the region (Bolch et al., 2008b; Thakuri et al., 2014). Salerno et al. (2014) cites a weakened monsoon with reduced accumulation at all elevations as a main reason for the increased mass loss in recent years. Differences between modelled and observed*

rates of glacier shrinkage can be attributed to errors in the glacier inventory, e.g. geometric correction and interpretation errors, uncertainty in our estimates of initial ice volumes, and other model errors which are discussed below.

### 3.3 Glacier Sensitivity to Future Climate Change

Decadal temperature and precipitation anomalies extracted from members of the CMIP5 ensemble that capture a range of climate scenarios (Table 5) are applied to the historical APHRODITE *T* and *P* fields. The calibrated glacier mass and redistribution model is then used to explore the sensitivity of modelled glaciers to future climate change in the Dudh Kosi basin. From initial glacier volumes and extents (Eq.[8]), the mean projected changes in total ice volume at 2050 are -39.3% and -52.4% for RCP4.5 and RCP8.5 emissions scenarios, respectively (Table 6). The minimum projected volume change at 2050 is -26% (cold/wet), and the maximum is -70% (warm/dry). At 2100 the projected mean total volume loss is estimated at -83.7% for RCP4.5 scenarios, and -94.7% for RCP8.5, with a range between -70% and -99%. Radić et al. (2014) and Marzeion et al. (2012), respectively, estimate mean glacier volume changes in south-east Asia of -50% and -60% for RCP4.5 scenarios, and -75% and -70% for RCP8.5 by 2100. In all scenarios presented here, the rate of ice loss decreases towards the end of the simulation period (Figure 16), which indicates a shift towards equilibrium mass balance conditions.

Increased precipitation may slow the rate of future mass loss, but it is not sufficient to offset the increases in glacier melt due to increased temperatures. Changes in the timing and magnitude of monsoon precipitation may thus be less important than previously believed (Mölg et al., 2012; Bolch et al., 2012). The main difference between the RCP4.5 and RCP8.5 scenarios is the magnitude of the temperature increase, which leads to greater losses of ice volume in the RCP8.5 scenarios. This is due in part to the increased melt, but also to the expansion of the ablation area and the change in precipitation phase from solid to liquid. Based on the daily temperature gradients and projected monthly temperature increases, the elevation of the 0°C isotherm may increase by 800 to 1200 m by 2100. A potential snowline elevation of 7000 m in August would expose 90% of the current glacierized area to melt, and severely restrict snow accumulation during the monsoon.

With a distributed model we can examine the possible impact of future climate change on Everest-region glacier area and thickness with respect to elevation. The patterns of decreases in ice area (Figure 17) and ice thickness (Figure 18) with elevation illustrate the combined effects of increased melt rates due to warmer temperatures and the insulating effect of debris cover. The greatest losses in glacier area, both relative and absolute, are expected at elevations close to the current ELA (approx. 5500 m), where the greatest amount of debris-free ice area currently exists. At lower elevations, where glaciers are exclusively debris-covered (Figure 2), modelled glacier thicknesses are greater (Figure 11), melt rates are lower, and modelled changes in glacier area and volume will be less than those near the ELA.

Wet and cool scenarios for both the RCP4.5 and RCP8.5 scenarios show the possible survival of debris covered glaciers between 4000 and 4500 m, albeit with greatly reduced thicknesses (Figure 18). In both warm and dry scenarios, glaciers below 5500 m could be eliminated, and in the RCP8.5 scenario, glacier thicknesses between 6000 and 6500 m could experience reductions by the year 2100. According to these scenarios, no changes are expected in the glacier volumes at elevations above 7000 m.

Our most conservative realization (RCP4.5 dry/cold,  $T + 1.5^{\circ}\text{C}$ ,  $P + 12.3\%$  by 2050) shows virtually no change in glaciers above 6000 m (Figure 17B). However, glacierized area near the current ELA (5500 m) may see declines of up to 80%, and thinning will occur below 5750 m (Figure 18). Debris-covered termini may see area reductions of 40% by 2100. The RCP8.5 warm/dry scenario ( $+3.1^{\circ}\text{C}$ ,  $-2.8\%$   $P$  by 2050) is the worst-case realization, in which glaciers below 6500 m are essentially eliminated by 2100 (Figure 17C).

## 4 Discussion

Through a multi-parameter calibration and validation with independent datasets, we model the mass balance and mass redistribution of glaciers in the Dudh Kosi basin over the period 1961–2007. Temperature and precipitation changes specified from end-members of the CMIP5 ensemble are applied to historical climate fields to examine the sensitivity of glaciers in the region to future climate change. Expected increases in temperature will result in sustained mass losses

that are only partially offset by increases in precipitation. We can identify three main sources of uncertainty in our approach: parametric, structural, and climate inputs. These are discussed below. Although considerable progress is made in this study by the systematic integration of field based observations into our modelling approach, there are still a number of key challenges to be addressed in the future.

## 4.1 Structural Uncertainty

The glacier mass balance and redistribution model used in this study has precedents in other studies (Immerzeel et al., 2012, 2013), and has been calibrated here with observational data. While the model is a simplification of complex ice flow and dynamical processes, it is an important tool that can be used to explore the sensitivity of glaciers in the region to future climate change. Given the forcings ( $-1.2^{\circ}\text{C}$  over 47 years) and parameter set (uncalibrated) used in the initialization, and the lag in actual glacier geometry response to climate change, it is possible that there are additional uncertainties in our estimates of initial ice volumes.

Our assumption of stationary debris cover may also be incorrect in the long-term, as glacier wastage typically leads to increased debris concentrations and the development of a debris cover. However, the median glacier slope above 5500 m is greater than  $20^{\circ}$  (Figure 7), and the development of debris cover on such slopes is unlikely (cf. Fig 3b, Scherler et al., 2011a) as de-glaciation proceeds. Until higher-order models of Himalayan glacier dynamics (e.g. Adhikari and Huybrechts, 2009) are sufficiently advanced and explicitly include the effects of debris cover, and the additional input data (bedrock topography, ice temperatures) and are well-constrained, simple modelling approaches will still be required for basin-scale analyses of glacier change scenarios.

## 4.2 Parametric Uncertainty

Our calibration approach relies on 20 set of six different parameters with values taken randomly from pre-assigned initial values and ranges (Table 3). *Model results from the 20 parameter sets (Figures 12,13, 14) suggest that the parametric uncertainty is well-constrained.* The selected

set of calibrated parameters is similar to those used in other regions (Immerzeel et al., 2012, 2013), but a much larger and more computationally expensive Monte Carlo-type simulation must be undertaken to reduce the parametric uncertainty. Additional calibration datasets would also be beneficial, and these could include a greater number of ice depth measurements from debris-covered and clean-ice glaciers, remotely-sensed snow cover, and glacier mass balance.

### 4.3 Input Climate Data Uncertainty

The lack of high elevation temperature and precipitation data to force the mass balance model is one of the key challenges that nearly all Himalayan modelling studies face. In this study, we derive temperature gradients and precipitation-elevation functions from the 0.25° gridded APHRODITE data, which in turn is based primarily on low-elevation stations. The downscaling approach is then tested with semi-independent station data from the EVK2CNR network of stations in the Dudh Kosi basin. While temperatures can be skillfully modelled after applying a bias-correction based on the day of year, our ability to predict precipitation ranges from very good (at Pyramid) to very poor (at Pheriche). Difficulty in quantifying precipitation and precipitation gradients in high-mountain areas is likely one of the largest sources of uncertainty in mountain hydrology (Immerzeel et al., 2012; Nepal et al., 2013). Further investigations into high-elevation precipitation gradients, through field studies, remote sensing derivatives, and/or the use of high-resolution numerical weather models, will help to increase our understanding of glacier nourishment in the region. An analysis of the sensitivity of modelled glacier change to the rain/snow threshold temperature is also recommended.

### 4.4 Response Times

Glaciers in the region are highly sensitive to temperature changes. Precipitation increases of 15% (mostly during the monsoon season) will be unable to counter the loss of glacier mass due to increased melt rates. For intense warming scenarios, our ensemble mean volume change is more negative than regional estimates given by both Marzeion et al. (2012) and Radić et al. (2014). The potential loss of lower-elevation glaciers in the study area raises the question of



glacier response times. The actual response times of glaciers in the region can be approximated from modelled thicknesses and mass balance rates near the glacier terminus, following the methods of Jóhannesson et al. (1989):

$$\tau = \frac{-H'}{\dot{b}_a} \quad (10)$$

5 where  $H'$  is a representative glacier thickness and  $\dot{b}_a$  ( $\dot{b}_a > 0$ ) is the mean annual mass balance near the terminus. Given our modeled ice thicknesses and mean annual mass balances at the termini of glaciers throughout the catchment, Eq.[10] suggests that the smaller glaciers in the southern portions of the basin have total glacier response times on the order of 20-50 years, while the large debris-covered glaciers have response times of 200-500 years. These first-order  
10 estimates reflect the time it takes the glaciers to reach a new equilibrium state in response to a step change in climate (Cogley et al., 2011), and are in agreement with the modelled persistence of debris-covered termini, and loss of smaller, low-elevation glaciers.

Our scenarios suggest that future reductions in glacier area will occur mainly in clean ice regions between accumulation areas and debris-covered termini. We anticipate that the hypso-  
15 metric distribution of ice will become bi-modal as glacier mass loss proceeds: debris-covered tongues will continue to exist (in reduced states) at low elevations, but will become separated from their high-elevation accumulation zones (Kääb, 2005). Current examples of this type of glacier change can be found at Chorabari Glacier, Garwhal Himalaya (Dobhal et al., 2013) and at Lirung Glacier (central Nepal) in nearby Langtang Valley (Immerzeel et al., 2014a), where  
20 glacier wastage above the debris-covered termini has left stagnant debris-covered ice below and small high-elevation ice masses above. Model scenarios from this study are thus consistent with field observations, and suggest that this will become a familiar picture in the coming decades.

## 5 Conclusions

In the mountains of high Asia, changes in glacier volumes will impact the timing and magnitude  
25 of streamflows, particularly in the pre-monsoon period (Immerzeel et al., 2013). Our study

advances the current understanding of Himalayan glacier evolution under climate change, and examines the basin-scale evolution of glaciers in the Dudh Kosi basin of central Nepal using a distributed glacier mass balance and redistribution model. We constrain the glacier model parameters with observations where possible, and calibrate against observations of net glacier mass change, velocities on debris-covered termini, and glacier extents. Our work represents a first-order estimate of future glacier change, and is subject to considerable uncertainty from a number of sources.

Temperature and precipitation anomalies from end-member scenarios extracted from the CMIP5 RCP4.5 and RCP8.5 ensemble (Immerzeel et al., 2013) are applied to historical down-scaled climate fields, and the model is used to explore the sensitivity of glaciers in the Dudh Kosi basin to future climate change. Modelled glacier sensitivity to temperature change is high, with large decreases in ice thicknesses and extents for even the most conservative climate change scenario. Future climate scenarios with increased precipitation and reduced warming result in decreased mass losses, though increases in precipitation are insufficient to offset the dramatic increase in mass loss through increased melting.

Glaciers in the region appear to be highly sensitive to changes in temperature, and projected increases in precipitation are insufficient to offset the increased glacier melt. While we have identified numerous sources of uncertainty in the model, the signal of future glacier change in the region is clear and compelling. Future advancements in the representation of ice dynamics and understanding of high-altitude precipitation will result in improved catchment-scale estimates of glacier sensitivity to future climate change.

*Acknowledgements.* We gratefully acknowledge the Royal Norwegian Embassy at Kathmandu for funding the Cryosphere Monitoring Project at the ICIMOD, and the contributions of Finu Shrestha and Sudan Maharajan to the glacier inventory work. This study was partially funded by the Netherlands Organization for Scientific Research through their VENI program and by the research for development (R4D) program of DFID, as well as core funds of ICIMOD contributed by the governments of Afghanistan, Australia, Austria, Bangladesh, Bhutan, China, India, Myanmar, Nepal, Norway, Pakistan, Switzerland, and the United Kingdom. Mera and Changri Nup glacier research was supported by the French Service d'Observation GLACIOCLIM and the French National Research Agency through ANR-09-CEP-005-01/PAPRIKA. This study was carried out within the framework of the Ev-K2-CNR Project in collab-

oration with the Nepal Academy of Science and Technology as foreseen by the Memorandum of Understanding between Nepal and Italy, and thanks to contributions from the Italian National Research Council, the Italian Ministry of Education, University and Research, and the Italian Ministry of Foreign Affairs. We also acknowledge the World Climate Research Programme's Working Group on Coupled Modelling, which is responsible for CMIP, and we thank the climate modelling groups for producing and making available their model outputs. The views and interpretations in this publication are those of the authors and are not necessarily attributable to ICIMOD. Ben Marzeion, Anne Rowan, Graham Cogley, Franco Salerno, and an anonymous reviewer provided invaluable comments and suggestions on previous versions of this manuscript.

## References

- Adhikari, S. and Huybrechts, P.: Numerical modelling of historical front variations and the 21st-century evolution of glacier AX010, Nepal Himalaya, *Annals of Glaciology*, 50, 27–34, 2009.
- Ageta, Y. and Higuchi, K.: Estimation of mass balance components of a summer-accumulation type glacier in the Nepal Himalaya, *Geografiska Annaler. Series A. Physical Geography*, pp. 249–255, 1984.
- Ageta, Y. and Kadota, T.: Predictions of changes of glacier mass balance in the Nepal Himalaya and Tibetan Plateau: a case study of air temperature increase for three glaciers, *Annals of Glaciology*, 16, 89–94, 1992.
- Asahi, K.: Equilibrium-line altitudes of the present and Last Glacial Maximum in the eastern Nepal Himalayas and their implications for SW monsoon climate, *Quaternary International*, 212, 26–34, doi:10.1016/j.quaint.2008.08.004, 2010.
- Ashfaq, M., Shi, Y., Tung, W.-w., Trapp, R. J., Gao, X., Pal, J. S., and Diffenbaugh, N. S.: Suppression of south Asian summer monsoon precipitation in the 21st century, *Geophysical Research Letters*, 36, L01704, doi:10.1029/2008GL036500, 2009.
- Azam, M. F., Wagnon, P., Vincent, C., Ramanathan, A., Linda, A., and Singh, V. B.: Reconstruction of the annual mass balance of Chhota Shigri glacier, Western Himalaya, India, since 1969, *Annals of Glaciology*, 55, 69–80, doi:10.3189/2014AoG66A104, 2014.
- Bajracharya, S., Maharjan, S., and Shrestha, F.: The status and decadal change of glaciers in Bhutan from the 1980s to 2010 based on satellite data, *Annals of Glaciology*, 55, 159, doi:10.3189/2014AoG66A125, 2014.

Bajracharya, S., Maharjan, S., Shrestha, F., Bajracharya, O., and Baidya, S.: Glacier Status in Nepal and Decadal Change from 1980 to 2010 Based on Landsat Data, ICIMOD, available at [lib.icimod.org/record/29291](http://lib.icimod.org/record/29291) (last accessed 29 Aug 2014), 2014.

Bajracharya, S. R. and Mool, P.: Glaciers, glacial lakes and glacial lake outburst floods in the Mount Everest region, Nepal, *Annals of Glaciology*, 50, 81–86, doi:10.3189/172756410790595895, 2010.

Benn, D. I., Bolch, T., Hands, K., Gulley, J., Luckman, A., Nicholson, L. I., Quincey, D., Thompson, S., Toumi, R., and Wiseman, S.: Response of debris-covered glaciers in the Mount Everest region to recent warming, and implications for outburst flood hazards, *Earth Science Reviews*, 114, 156–174, doi:10.1016/j.earscirev.2012.03.008, 2012.

Bernhardt, M. and Schulz, K.: SnowSlide: A simple routine for calculating gravitational snow transport, *Geophysical Research Letters*, 37, L11502, doi:10.1029/2010GL043086, 2010.

Bolch, T., Buchroithner, M., Pieczonka, T., and Kunert, A.: Planimetric and volumetric glacier changes in the Khumbu Himal, Nepal, since 1962 using Corona, Landsat TM and ASTER data, *Journal of Glaciology*, 54, 592–600, doi:10.3189/002214308786570782, 2008a.

Bolch, T., Buchroithner, M. F., Peters, J., Baessler, M., and Bajracharya, S.: Identification of glacier motion and potentially dangerous glacial lakes in the Mt. Everest region/Nepal using spaceborne imagery, *Natural Hazards and Earth System Sciences*, 8, 1329–1340, 2008b.

Bolch, T., Pieczonka, T., and Benn, D. I.: Multi-decadal mass loss of glaciers in the Everest area (Nepal Himalaya) derived from stereo imagery, *The Cryosphere*, 5, 349–358, doi:10.5194/tc-5-349-2011, 2011.

Bolch, T., Kulkarni, A., Kääb, A., Huggel, C., Paul, F., Cogley, J. G., Frey, H., Kargel, J. S., Fujita, K., Scheel, M., Bajracharya, S., and Stoffel, M.: The state and fate of Himalayan glaciers, *Science*, 336, 310–314, doi:10.1126/science.1215828, 2012.

Bookhagen, B. and Burbank, D.: Topography, relief, and TRMM-derived rainfall variations along the Himalaya, *Geophysical Research Letters*, 33, L08 405, doi:10.1029/2006GL026037, 2006.

Chen, N. S., Hu, G. S., Deng, W., Khanal, N., Zhu, Y., and Han, D.: On the water hazards in the trans-boundary Kosi River basin, *Natural Hazards and Earth System Science*, 13, 795–808, doi:10.5194/nhess-13-795-2013, 2013.

Cogley, J., Hock, R., Rasmussen, L., Arendt, A., Bauder, A., Braithwaite, R., Jansson, P., Kaser, G., Möller, M., Nicholson, L., and Zemp, M.: Glossary of glacier mass balance and related terms. IHP-VII Technical Documents in Hydrology No. 86, IACS Contribution No. 2, UNESCO-IHP, 126 pp., 2011.

- Cogley, J. G.: Present and future states of Himalaya and Karakoram glaciers, *Annals of Glaciology*, 52, 69–73, doi:10.3189/172756411799096277, 2011.
- Dimri, A. and Dash, S.: Wintertime climatic trends in the western Himalayas, *Climatic Change*, 111, 775–800, <http://dx.doi.org/10.1007/s10584-011-0201-y>, 10.1007/s10584-011-0201-y, 2012.
- 5 Dimri, A., Yasunari, T., Wiltshire, A., Kumar, P., Mathison, C., Ridley, J., and Jacob, D.: Application of regional climate models to the Indian winter monsoon over the western Himalayas, *Science of The Total Environment*, 468, S36–S47, doi:10.1016/j.scitotenv.2013.01.040, 2013.
- Dobhal, D., Mehta, M., and Srivastava, D.: Influence of debris cover on terminus retreat and mass changes of Chorabari Glacier, Garhwal region, central Himalaya, India, *Journal of Glaciology*, 59, 961, doi:10.3189/2013JoG12J180, 2013.
- 10 Farr, T. G., Rosen, P. A., Caro, E., Crippen, R., Duren, R., Hensley, S., Kobrick, M., Paller, M., Rodriguez, E., Roth, L., Seal, D., Shaffer, S., Shimada, J., Umland, J., Werner, M., Oskin, M., Burbank, D., and Alsdorf, D.: The Shuttle Radar Topography Mission, *Reviews of Geophysics*, 45, RG2004, doi:10.1029/2005RG000183, 2007.
- 15 Fowler, A. C.: Weertman, Llibouty and the development of sliding theory, *Journal of Glaciology*, 56, 965–972, doi:10.3189/002214311796406112, 2010.
- Frey, H., Machguth, H., Huss, M., Huggel, C., Bajracharya, S., Bolch, T., Kulkarni, A., Linsbauer, A., Salzmann, N., and Stoffel, M.: Ice volume estimates for the Himalaya–Karakoram region: evaluating different methods, *The Cryosphere Discussions*, 7, 4813–4854, doi:10.5194/tcd-7-4813-2013, <http://www.the-cryosphere-discuss.net/7/4813/2013/>, 2013.
- 20 Fujita, K. and Nuimura, T.: Spatially heterogeneous wastage of Himalayan glaciers, *Proceedings of the National Academy of Sciences*, 108, 14 011–14 014, doi:10.1073/pnas.1106242108, 2011.
- Gades, A., Conway, H., Nereson, N., Naito, N., and Kadota, T.: Radio echo-sounding through supraglacial debris on Lirung and Khumbu Glaciers, Nepal Himalayas, *Proceedings of International Workshop on Debris Covered Glaciers*, IAHS-AISH Publication, 264, 13–22, 2000.
- 25 Gantayat, P., Kulkarni, A., and Srinivasan, J.: Estimation of ice thickness using surface velocities and slope: case study at Gangotri Glacier, India, *Journal of Glaciology*, 60, 277, doi:10.3189/2014JoG13J078, 2014.
- Gardelle, J., Berthier, E., and Arnaud, Y.: Slight mass gain of Karakoram glaciers in the early twenty-first century, *Nature Geoscience*, 5, 322–325, doi:10.1038/ngeo1450, 2012.
- 30 Gardelle, J., Berthier, E., Arnaud, Y., and Kääb, A.: Region-wide glacier mass balances over the Pamir–Karakoram–Himalaya during 1999–2011, *The Cryosphere*, 7, 1263–1286, doi:10.5194/tc-7-1263-2013, 2013.

- Gardner, A. S., Moholdt, G., Cogley, J. G., Wouters, B., Arendt, A. A., Wahr, J., Berthier, E., Hock, R., Pfeffer, W. T., Kaser, G., et al.: A reconciled estimate of glacier contributions to sea level rise: 2003 to 2009, *Science*, 340, 852–857, doi:10.1126/science.1234532, 2013.
- Gautam, M. R., Acharya, K., and Tuladhar, M. K.: Upward trend of streamflow and precipitation in a small, non-snow-fed, mountainous watershed in Nepal, *Journal of Hydrology*, 387, 304–311, 2010.
- Glen, J. W.: The creep of polycrystalline ice, *Royal Society of London Proceedings Series A*, 228, 519–538, doi:10.1098/rspa.1955.0066, 1955.
- Harper, J. T. and Humphrey, N. F.: High altitude Himalayan climate inferred from glacial ice flux, *Geophysical Research Letters*, 30, 1764, doi:10.1029/2003GL017329, 2003.
- Hewitt, K.: Tributary glacier surges: an exceptional concentration at Panmah Glacier, Karakoram Himalaya, *Journal of Glaciology*, 53, 181–188, doi:10.3189/172756507782202829, 2007.
- Huss, M. and Farinotti, D.: Distributed ice thickness and volume of all glaciers around the globe, *Journal of Geophysical Research (Earth Surface)*, 117, F04010, doi:10.1029/2012JF002523, 2012.
- ICIMOD: The status of glaciers in the Hindu Kush-Himalayan region, ICIMOD, 2011.
- Immerzeel, W., van Beek, L., Konz, M., Shrestha, A., and Bierkens, M.: Hydrological response to climate change in a glacierized catchment in the Himalayas, *Climatic Change*, 110, 721–736, doi:10.1007/s10584-011-0143-4, 2012.
- Immerzeel, W., Pellicciotti, F., and Bierkens, M.: Rising river flows throughout the twenty-first century in two Himalayan glacierized watersheds, *Nature Geoscience*, doi:10.1038/ngeo1896, 2013.
- Immerzeel, W., Kraaijenbrink, P., Shea, J., Shrestha, A., Pellicciotti, F., Bierkens, M., and de Jong, S.: High-resolution monitoring of Himalayan glacier dynamics using unmanned aerial vehicles, *Remote Sensing of Environment*, 150, 93–103, 2014a.
- Immerzeel, W. W., van Beek, L. P. H., and Bierkens, M. F. P.: Climate change will affect the Asian water towers, *Science*, 328, 1382–1385, doi:10.1126/science.1183188, 2010.
- Immerzeel, W. W., Petersen, L., Ragettli, S., and Pellicciotti, F.: The importance of observed gradients of air temperature and precipitation for modeling runoff from a glacierized watershed in the Nepalese Himalayas, *Water Resources Research*, doi:10.1002/2013WR014506, <http://dx.doi.org/10.1002/2013WR014506>, 2014b.
- Inoue, J.: Mass budget of Khumbu Glacier: glaciological expedition of Nepal, *Contribution No. 32, Seppyo*, 39, 15–19, 1977.
- Jacob, T., Wahr, J., Pfeffer, W., and Swenson, S.: Recent contributions of glaciers and ice caps to sea level rise, *Nature*, 482, 514–518, doi:10.1038/nature10847, 2012.

- Jóhannesson, T., Raymond, C., and Waddington, E.: Time-scale for adjustment of glaciers to changes in mass balance, *Journal of Glaciology*, 35, 355–369, 1989.
- Kääb, A.: Combination of SRTM3 and repeat ASTER data for deriving alpine glacier flow velocities in the Bhutan Himalaya, *Remote Sensing of Environment*, 94, 463–474, 2005.
- 5 Kääb, A., Berthier, E., Nuth, C., Gardelle, J., and Arnaud, Y.: Contrasting patterns of early twenty-first-century glacier mass change in the Himalayas, *Nature*, 488, 495–498, doi:10.1038/nature11324, 2012.
- Kripalani, R. H., Oh, J. H., Kulkarni, A., Sabade, S. S., and Chaudhari, H. S.: South Asian summer monsoon precipitation variability: Coupled climate model simulations and projections under IPCC AR4, *Theoretical and Applied Climatology*, 90, 133–159, doi:10.1007/s00704-006-0282-0, 2007.
- 10 Lejeune, Y., Bertrand, J.-M., Wagnon, P., and Morin, S.: A physically based model of the year-round surface energy and mass balance of debris-covered glaciers, *Journal of Glaciology*, 59, 327–344, doi:10.3189/2013JoG12J149, 2013.
- Liu, Y., Hou, S., Wang, Y., and Song, L.: Distribution of borehole temperature at four high-altitude alpine glaciers in central Asia, *Journal of Mountain Science*, 6, 221–227, 2009.
- 15 Lutz, A. F., Immerzeel, W. W., Gobiet, A., Pellicciotti, F., and Bierkens, M. F. P.: New climate change scenarios reveal uncertain future for Central Asian glaciers, *Hydrology and Earth System Sciences Discussions*, 9, 12 691–12 727, doi:10.5194/hessd-9-12691-2012, 2012.
- Mae, S., Wushiki, H., Ageta, Y., and Higuchi, K.: Thermal drilling and temperature measurements in Khumbu Glacier, Nepal Himalayas, *Seppyo*, 37, 161–169, 1975.
- 20 Marzeion, B., Jarosch, A. H., and Hofer, M.: Past and future sea-level change from the surface mass balance of glaciers, *The Cryosphere*, 6, 1295–1322, doi:10.5194/tc-6-1295-2012, 2012.
- Mathison, C., Wiltshire, A., Dimri, A., Falloon, P., Jacob, D., Kumar, P., Moors, E., Ridley, J., Siderius, C., Stoffel, M., and Yasunari, T.: Regional projections of North Indian climate for adaptation studies, *Science of The Total Environment*, doi:10.1016/j.scitotenv.2012.04.066, <http://www.sciencedirect.com/science/article/pii/S0048969712006377>, in press, 2012.
- 25 Mirza, M., Warrick, R., Ericksen, N., and Kenny, G.: Trends and persistence in precipitation in the Ganges, Brahmaputra and Meghna river basins, *Hydrological Sciences Journal*, 43, 845–858, 1998.
- Mölg, T., Chiang, J. C. H., Gohm, A., and Cullen, N. J.: Temporal precipitation variability versus altitude on a tropical high mountain: Observations and mesoscale atmospheric modelling, *Quarterly Journal of the Royal Meteorological Society*, 135, 1439–1455, doi:10.1002/qj.461, 2009.
- 30 Mölg, T., Maussion, F., Yang, W., and Scherer, D.: The footprint of Asian monsoon dynamics in the mass and energy balance of a Tibetan glacier, *The Cryosphere*, Volume 6, Issue 6, 2012, pp.1445-1461, 6, 1445–1461, doi:10.5194/tc-6-1445-2012, 2012.

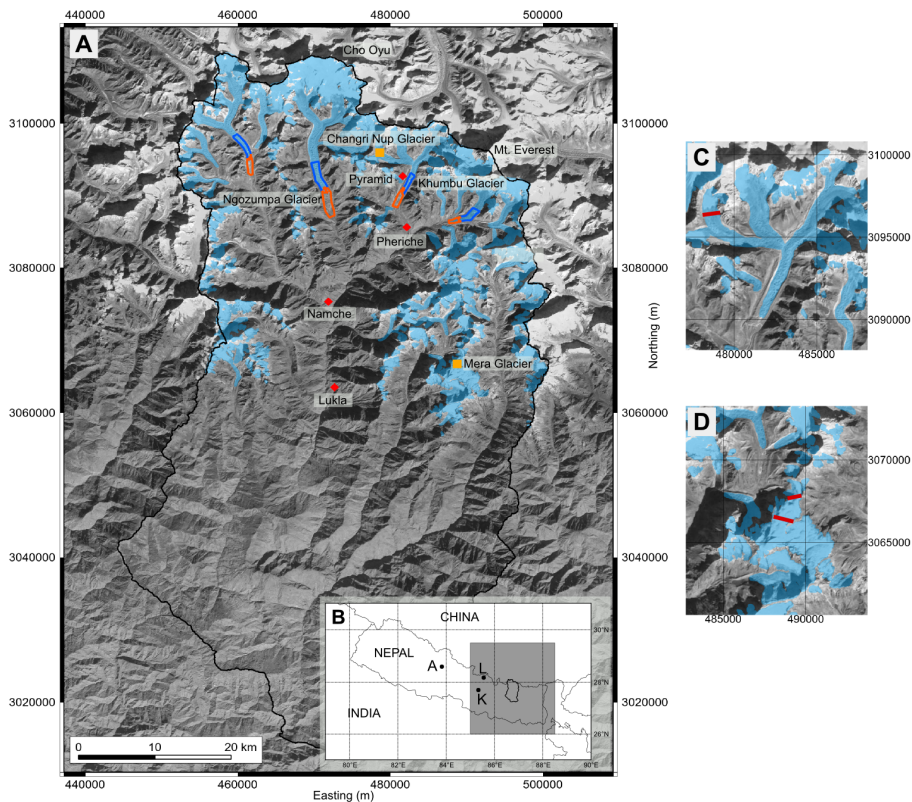
- Naito, N., Nakawo, M., Kadota, T., and Raymond, C. F.: Numerical simulation of recent shrinkage of Khumbu Glacier, Nepal Himalayas, in: Debris-covered Glaciers: Proceedings of an International Workshop Held at the University of Washington in Seattle, Washington, USA, 13-15 September 2000, vol. 264, p. 245, International Association of Hydrological Sciences, 2000.
- 5 Nakawo, M., Yabuki, H., and Sakai, A.: Characteristics of Khumbu Glacier, Nepal Himalaya: recent change in the debris-covered area, *Annals of Glaciology*, 28, 118–122, 1999.
- Nepal, S., Krause, P., Flügel, W.-A., Fink, M., and Fischer, C.: Understanding the hydrological system dynamics of a glaciated alpine catchment in the Himalayan region using the J2000 hydrological model, *Hydrological Processes*, doi:10.1002/hyp.9627, 2013.
- 10 Nuimura, T., Fujita, K., Yamaguchi, S., and Sharma, R. R.: Elevation changes of glaciers revealed by multitemporal digital elevation models calibrated by GPS survey in the Khumbu region, Nepal Himalaya, 1992-2008, *Journal of Glaciology*, 58, 648–656, doi:10.3189/2012JoG11J061, 2012.
- Oerlemans, J. and Fortuin, J. P. F.: Sensitivity of glaciers and small ice caps to greenhouse warming, *Science*, 258, 115–117, 1992.
- 15 Ohmura, A.: Enhanced temperature variability in high-altitude climate change, *Theoretical and Applied Climatology*, 110, 499–508, doi:10.1007/s00704-012-0687-x, 2012.
- Palazzi, E., Hardenberg, J., and Provenzale, A.: Precipitation in the Hindu-Kush Karakoram Himalaya: Observations and future scenarios, *Journal of Geophysical Research (Atmospheres)*, 118, 85–100, doi:10.1029/2012JD018697, 2013.
- 20 Pellicciotti, F., Buerger, C., Immerzeel, W., Konz, M., and Shrestha, A.: Challenges and uncertainties in hydrological modeling of remote Hindu Kush-Karakoram-Himalayan (HKH) basins: suggestions for calibration strategies, *Mountain Research and Development*, 32, 39–50, doi:10.1659/MRD-JOURNAL-D-11-00092.1, 2012.
- 25 Qi, W., Zhang, Y., Gao, J., Yang, X., Liu, L., and Khanal, N. R.: Climate change on the southern slope of Mt. Qomolangma (Everest) region in Nepal since 1971, *Journal of Geographical Sciences*, 23, 595–611, 2013.
- Quincey, D. J., Luckman, A., and Benn, D.: Quantification of Everest region glacier velocities between 1992 and 2002, using satellite radar interferometry and feature tracking, *Journal of Glaciology*, 55, 596–606, doi:10.3189/002214309789470987, 2009.
- 30 Racoviteanu, A., Armstrong, R., and Williams, M.: Evaluation of an ice ablation model to estimate the contribution of melting glacier ice to annual discharge in the Nepalese Himalaya, *Water Resources Research*, doi:10.1002/wrcr.20370, 2013.



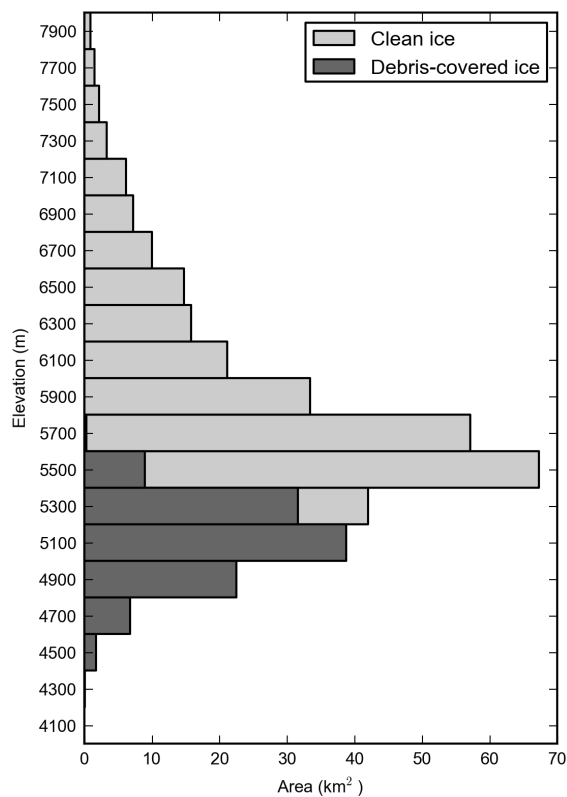
- Radić, V. and Hock, R.: Regional and global volumes of glaciers derived from statistical upscaling of glacier inventory data, *Journal of Geophysical Research (Earth Surface)*, 115, F01010, doi:10.1029/2009JF001373, 2010.
- 5 Radić, V., Bliss, A., Beedlow, A. C., Hock, R., Miles, E., and Cogley, J. G.: Regional and global projections of twenty-first century glacier mass changes in response to climate scenarios from global climate models, *Climate Dynamics*, 42, 37–58, doi:10.1007/s00382-013-1719-7, 2014.
- Rangwala, I. and Miller, J.: Climate change in mountains: a review of elevation-dependent warming and its possible causes, *Climatic Change*, 114, 527–547, doi:10.1007/s10584-012-0419-3, 2012.
- 10 Rangwala, I., Miller, J. R., Russell, G. L., and Xu, M.: Using a global climate model to evaluate the influences of water vapor, snow cover and atmospheric aerosol on warming in the Tibetan Plateau during the twenty-first century, *Climate Dynamics*, p. 58, doi:10.1007/s00382-009-0564-1, 2009.
- Rasmussen, L. A.: Meteorological controls on glacier mass balance in High Asia, *Annals of Glaciology*, 54, 352–359, doi:10.3189/2013AoG63A353, 2013.
- 15 Reid, T. D. and Brock, B. W.: An energy-balance model for debris-covered glaciers including heat conduction through the debris layer, *Journal of Glaciology*, 56, 903–916, doi:10.3189/002214310794457218, 2010.
- Richardson, S. D. and Reynolds, J. M.: An overview of glacial hazards in the Himalayas, *Quaternary International*, 65, 31–47, 2000.
- 20 Salerno, F., Buraschi, E., Bruccoleri, G., Tartari, G., and Smiraglia, C.: Glacier surface-area changes in Sagarmatha national park, Nepal, in the second half of the 20th century, by comparison of historical maps, *Journal of Glaciology*, 54, 738–752, doi:10.3189/002214308786570926, 2008.
- Salerno, F., Guyennon, N., Thakuri, S., Viviano, G., Romano, E., Vuillermoz, E., Cristofanelli, P., Stocchi, P., Agrillo, G., Ma, Y., et al.: Weak precipitation, warm winters and springs impact glaciers of south slopes of Mt. Everest (central Himalaya) in the last two decades (1994–2013), *The Cryosphere Discussions*, 8, 5911–5959, doi:10.5194/tcd-8-5911-2014, 2014.
- 25 Scherler, D., Bookhagen, B., and Strecker, M. R.: Spatially variable response of Himalayan glaciers to climate change affected by debris cover, *Nature Geoscience*, 4, 156–159, doi:10.1038/ngeo1068, 2011a.
- Scherler, D., Bookhagen, B., and Strecker, M. R.: Hillslope-glacier coupling: The interplay of topography and glacial dynamics in High Asia, *Journal of Geophysical Research (Earth Surface)*, 116, F02019, doi:10.1029/2010JF001751, 2011b.
- 30

- Shea, J., Wagnon, P., Immerzeel, W., Biron, R., Brun, F., and Pellicciotti, F.: A comparative high-altitude meteorological analysis from three catchments in the Nepalese Himalaya, *International Journal of Water Resources Management*, doi:10.1080/07900627.2015.1020417, in press., 2015.
- Shi, Y. and Liu, S.: Estimation on the response of glaciers in China to the global warming in the 21st century, *Chinese Science Bulletin*, 45, 668–672, doi:10.1007/BF02886048, 2000.
- Shrestha, A. B. and Aryal, R.: Climate change in Nepal and its impact on Himalayan glaciers, *Regional Environmental Change*, 11, 65–77, doi:10.1007/s10113-010-0174-9, 2011.
- Shrestha, A. B., Wake, C. P., Mayewski, P. A., and Dibb, J. E.: Maximum temperature trends in the Himalaya and its vicinity: an analysis based on temperature records from Nepal for the period 1971–94., *Journal of Climate*, 12, 2775–2786, doi:10.1175/1520-0442(1999)012<2775:MTTITH>2.0.CO;2, 1999.
- Singh, P., Kumar, N., Ramasastri, K., and Singh, Y.: Influence of a fine debris layer on the melting of snow and ice on a Himalayan Glacier, in: *Debris Covered Glaciers*, vol. 264 of *IAHS Proceedings*, pp. 63–69, IAHS, 2000.
- Stahl, K., Moore, R. D., Shea, J. M., Hutchinson, D., and Cannon, A. J.: Coupled modelling of glacier and streamflow response to future climate scenarios, *Water Resources Research*, 440, W02422, doi:10.1029/2007WR005956, 2008.
- Thakuri, S., Salerno, F., Smiraglia, C., Bolch, T., D’Agata, C., Viviano, G., and Tartari, G.: Tracing glacier changes since the 1960s on the south slope of Mt. Everest (central Southern Himalaya) using optical satellite imagery, *The Cryosphere*, 8, 1297–1315, doi:10.5194/tc-8-1297-2014, 2014.
- Thompson, S. S., Benn, D. I., Dennis, K., and Luckman, A.: A rapidly growing moraine-dammed glacial lake on Ngozumpa Glacier, Nepal, *Geomorphology*, 145, 1–11, doi:10.1016/j.geomorph.2011.08.015, 2012.
- Viviroli, D., Dürr, H. H., Messerli, B., Meybeck, M., and Weingartner, R.: Mountains of the world, water towers for humanity: Typology, mapping, and global significance, *Water Resources Research*, 43, W07447, doi:10.1029/2006WR005653, 2007.
- Wagnon, P., Vincent, C., Arnaud, Y., Berthier, E., Vuillermoz, E., Gruber, S., Ménégoz, M., Gilbert, A., Dumont, M., Shea, J. M., Stumm, D., and Pokhrel, B. K.: Seasonal and annual mass balances of Mera and Pokalde glaciers (Nepal Himalaya) since 2007, *The Cryosphere*, 7, 1769–1786, doi:10.5194/tc-7-1769-2013, <http://www.the-cryosphere.net/7/1769/2013/tc-7-1769-2013.html>, 2013.
- Weertman, J.: On the sliding of glaciers, *Journal of Glaciology*, 3, 33–38, 1957.
- Williams, V. S.: Present and former equilibrium-line altitudes near Mount Everest, Nepal and Tibet, *Arctic and Alpine Research*, pp. 201–211, 1983.

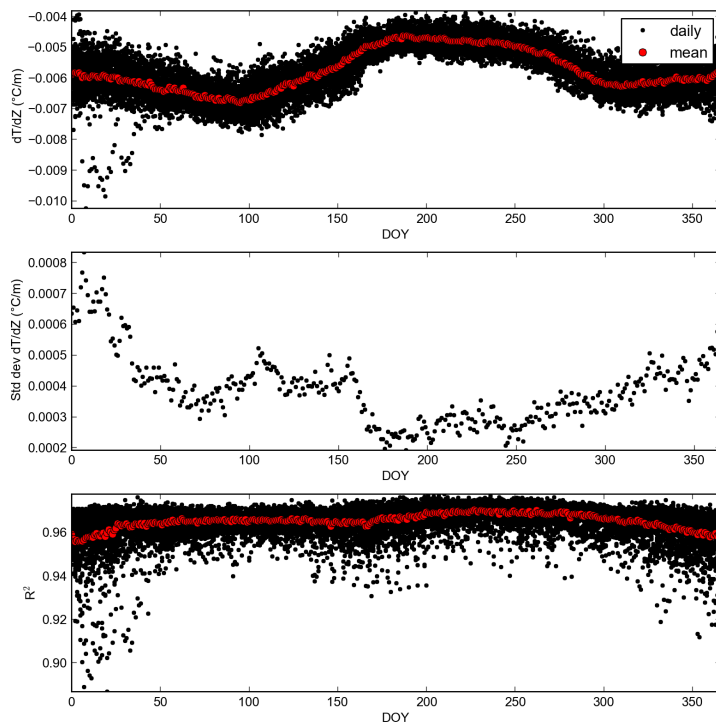
- Yao, T., Thompson, L., Yang, W., Yu, W., Gao, Y., Guo, X., Yang, X., Duan, K., Zhao, H., Xu, B. and Pu, J., Lu, A., Xiang, Y., Kattel, D., and Joswiak, D.: Different glacier status with atmospheric circulations in Tibetan Plateau and surroundings, *Nature Climate Change*, 2, 663–667, doi:10.1038/NCLIMATE1580, 2012.
- 5 Yatagai, A., Arakawa, O., Kamiguchi, K., Kawamoto, H., Nodzu, M. I., and Hamada, A.: A 44-year daily gridded precipitation dataset for Asia based on a dense network of rain gauges, *Sola*, 5, 137–140, doi:dx.doi.org/10.2151/sola.2009-035, 2009.
- Yatagai, A., Kamiguchi, K., Arakawa, O., Hamada, A., Yasutomi, N., and Kitoh, A.: APHRODITE: Constructing a Long-Term Daily Gridded Precipitation Dataset for Asia Based on a Dense Network of
- 10 Rain Gauges, *Bulletin of the American Meteorological Society*, 93, 1401–1415, doi:10.1175/BAMS-D-11-00122.1, 2012.
- Zhang, T., Xiao, C., Colgan, W., Qin, X., Du, W., Sun, W., Liu, Y., and Ding, M.: Observed and modelled ice temperature and velocity along the main flowline of East Rongbuk Glacier, Qomolangma (Mount Everest), Himalaya, *Journal of Glaciology*, 59, 438–448, doi:10.3189/2013JoG12J202, 2013.



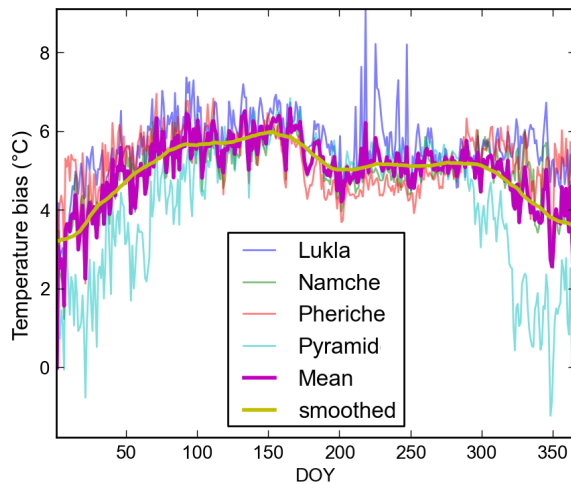
**Figure 1.** (A) Dudh Kosi basin, central Nepal, with current glacier extents in blue (ICIMOD, 2011), EVK2CNR stations (red), GPR profile sites (yellow). Extents of glacierized (blue) and non-glacierized (orange) regions used for model calibration are also shown. Coordinate system is UTM 45N. Inset map (B) shows the Dudh Kosi basin in relation to the APHRODITE subset (shaded), and the locations of places named in the text (A = Annapurna, L = Langtang, K = Kathmandu). Panels (C) and (D) give the location of the transverse GPR surveys (thick red lines) at Changri Nup and Mera glaciers, respectively.



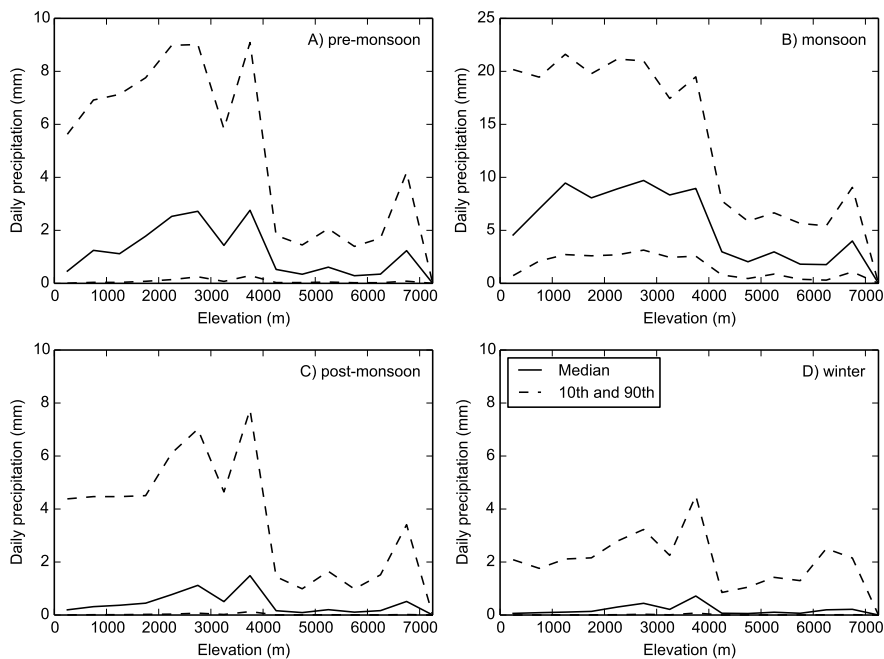
**Figure 2.** Area of clean and debris-covered glaciers by elevation, Dudh Kosi basin, Nepal. Extracted from SRTM 90 m DEM and glacier inventory from ICIMOD (2011)



**Figure 3.** (a) Vertical temperature gradients ( $\gamma_T$ ) by day of year (DOY) for all years (black) calculated from APHRODITE (1961 - 2007) temperature fields and resampled SRTM data, with period mean in red, (b) daily standard deviation of  $\gamma_T$ , and (c) mean daily coefficient of determination ( $R^2$ ) calculated from the linear regression of resampled SRTM elevations and APHRODITE cell temperatures. All temperature/elevation regressions are significant.

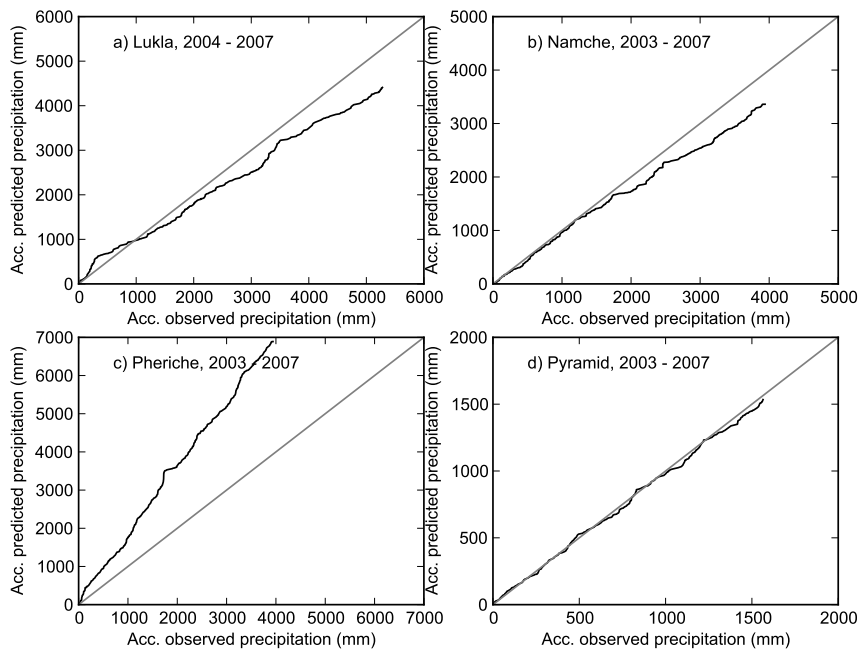


**Figure 4.** Average daily temperature bias (estimated - observed) for four EVK2CNR sites (2003 - 2007), their arithmetic mean, and a smoothed function used as a daily bias correction.

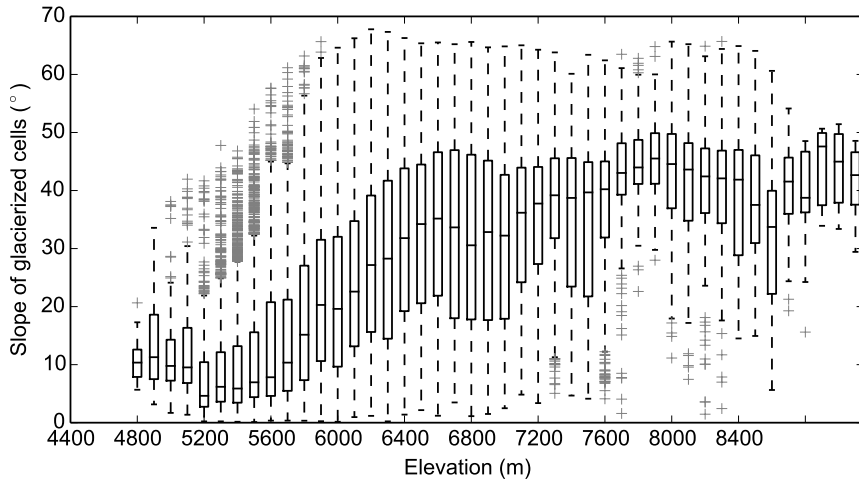


**Figure 5.** APHRODITE precipitation (1961-2007) binned by elevation for pre-monsoon (A), monsoon (B), post-monsoon (C), and winter (D). Median, 10th percentile, and 90th percentile of daily precipitation are shown. Note different scale for panel (B).

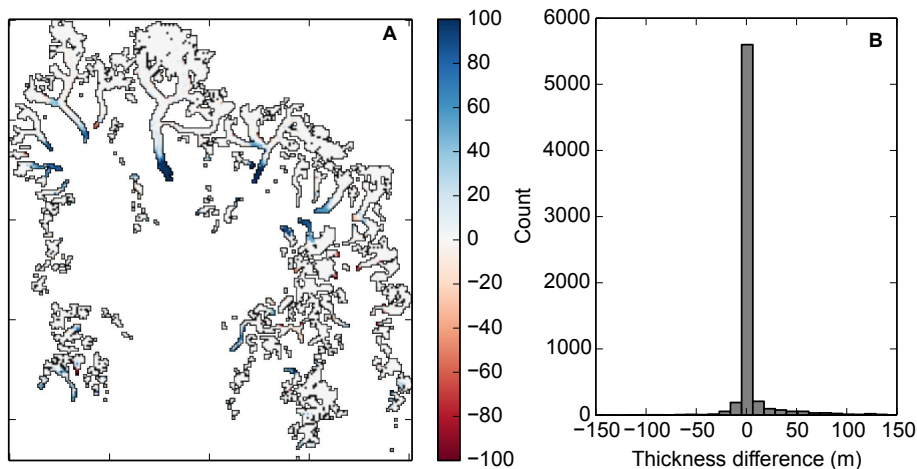




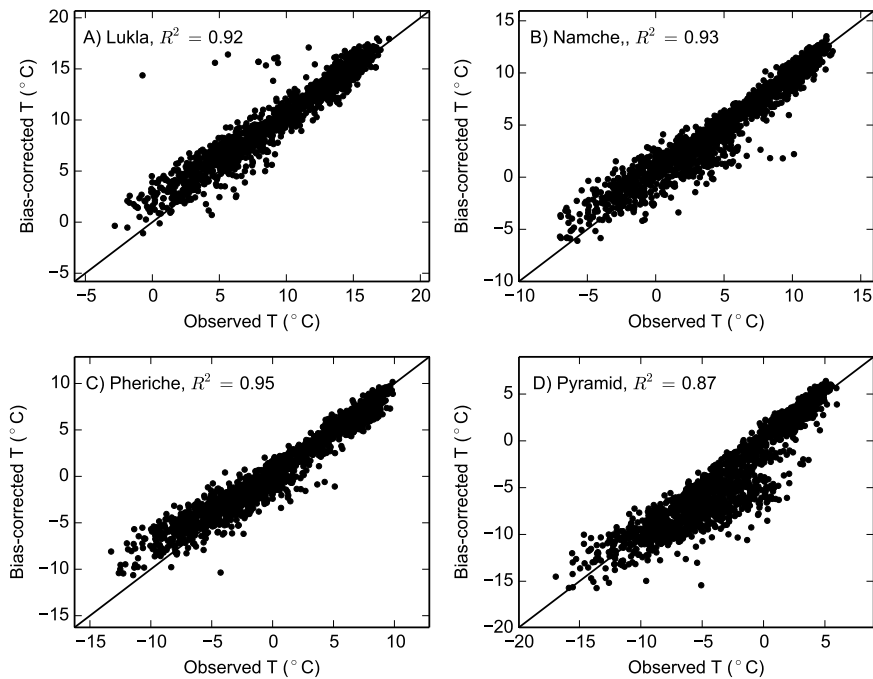
**Figure 6.** Accumulated observed and predicted precipitation at the EVK2CNR sites. Days where  $T < 0$  or precipitation observations were missing were excluded from the analyses.



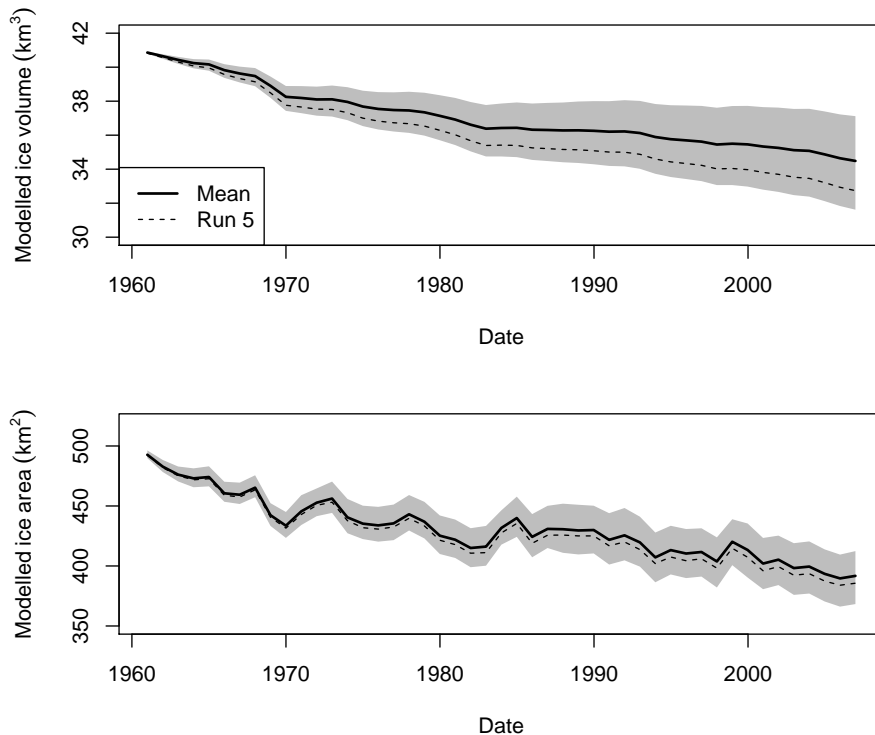
**Figure 7.** Boxplots of the slope of glacierized pixels in the Dudh Kosi basin, grouped by 100 m elevation bands. The boundaries of each box indicate the upper and lower quartiles, while the middle line of the box shows the median value. Whisker ends indicate the maximum (minimum) values excluding outliers, which are defined as more (less) than  $3/2$  times the upper (lower) quartile). Slope values were extracted from the SRTM 90 m DEM and glacier inventory from ICIMOD (2011).



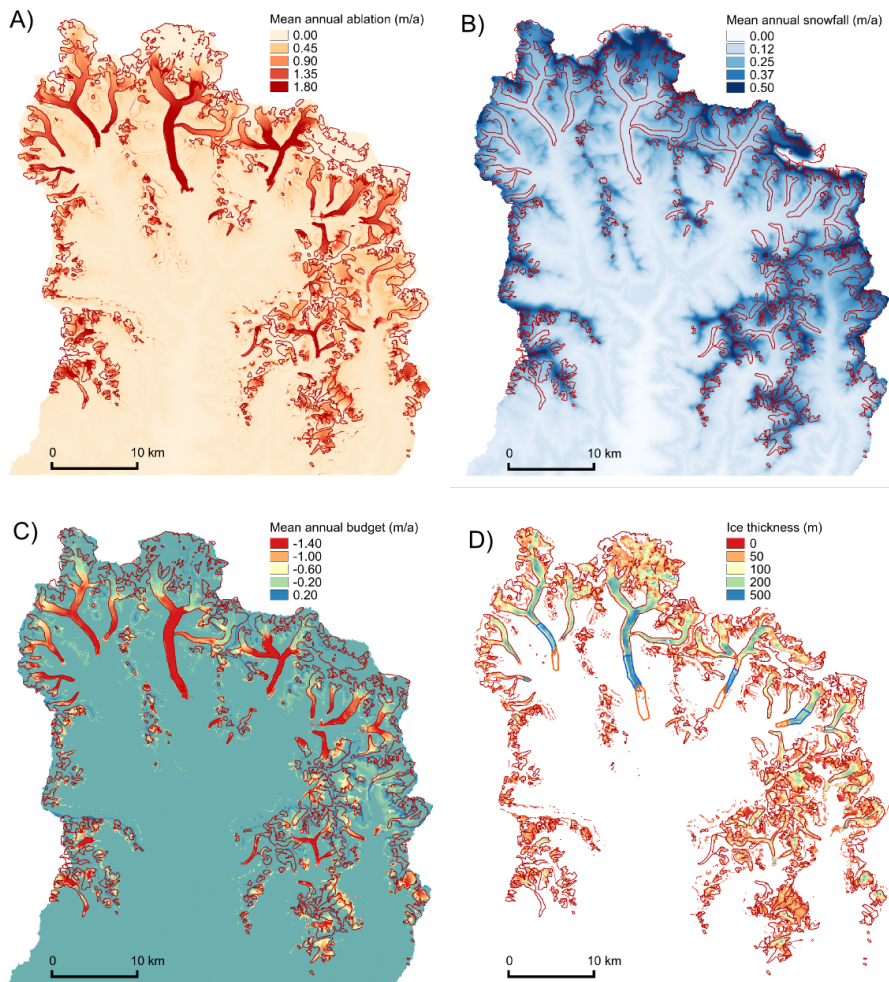
**Figure 8.** A) Differences in modeled ice thickness (in m) between the end of the first initialization run (47 years), and after an additional 94 years of simulation with  $dT = -1.2C$ . B) Histogram of differences in modeled ice thickness.



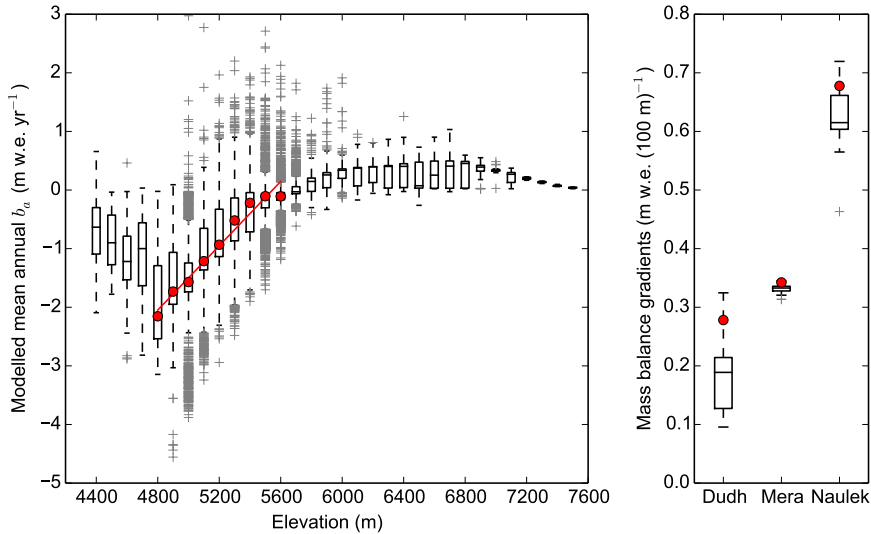
**Figure 9.** Mean daily temperatures observed at EVK2CNR sites (2003 - 2007) versus bias-corrected temperatures estimated from APHRODITE temperature fields.



**Figure 10.** Top panel: Modelled mean (01 November - 31 January) ice volumes from the 20 calibration runs, 1961-2007, with multi-model mean (black line), minimum and maximum modelled volumes (shaded area), and results from Run 5 (dashed line). Bottom panel: As above, but for modelled glacier areas from the twenty calibration runs.

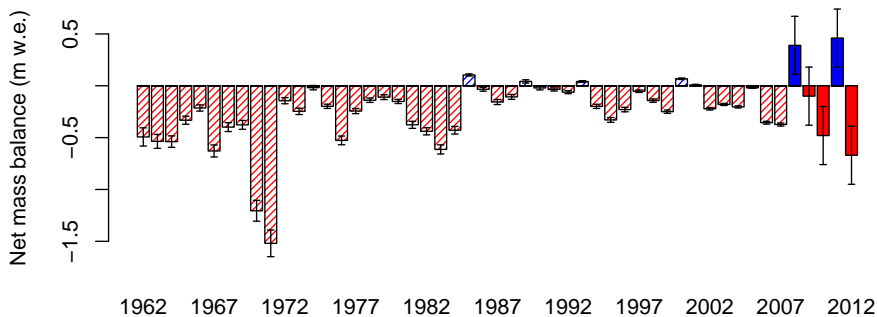


**Figure 11.** Results from the calibrated model run, 1961 - 2007. (A) Mean annual ablation, (B) mean annual snowfall, (C), mean annual mass budget, (D) final ice thickness. Extents of glacierized and non-glacierized calibration regions are shown in (D).

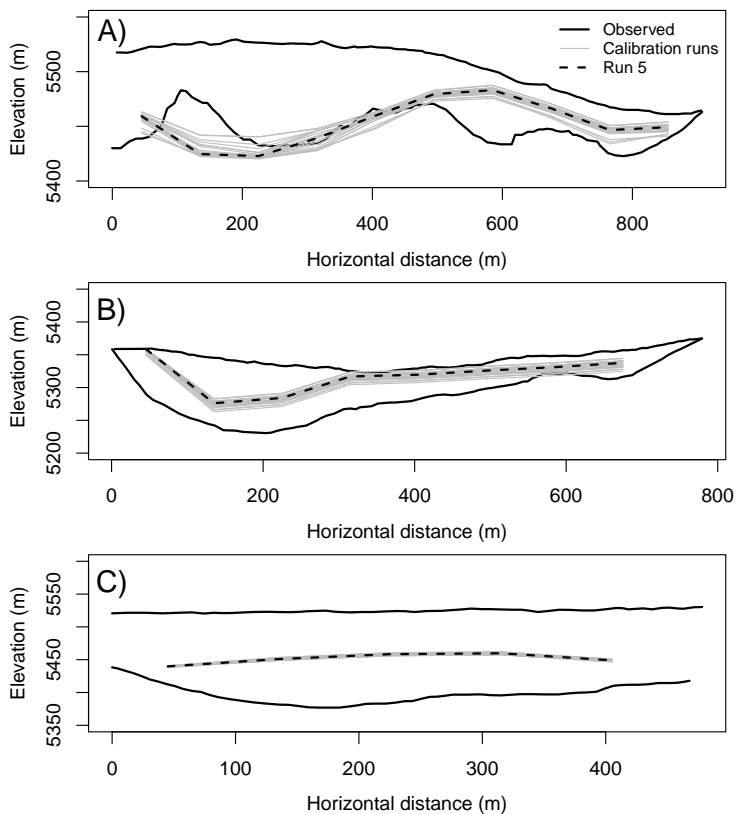


**Figure 12.** Left: Boxplots of modelled mean annual mass balance ( $\text{m w.e. yr}^{-1}$ ) calculated for 100 m intervals (1961 - 2007) for the entire Dudh Koshi basin. Calculated mass balance gradient of  $0.27 \text{ m w.e. (100 m)}^{-1}$  between 4850 and 5650 m is shown in red. Right: Boxplots of mass balance gradients calculated for all 20 calibration model runs for the entire Dudh Kosi (between 4850 and 5650 m), Mera Glacier (between 5350 and 5600 m), and Naulek Glacier (between 5350 and 5600). The gradients calculated for Run 5 are shown in red.

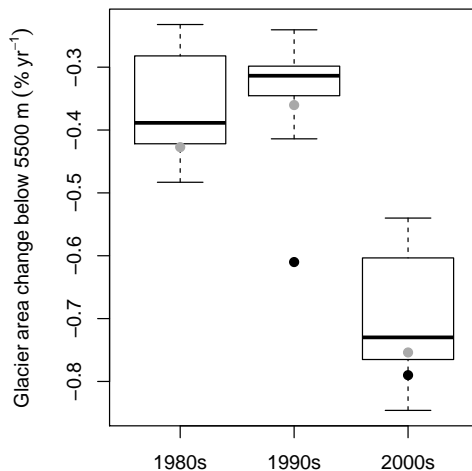




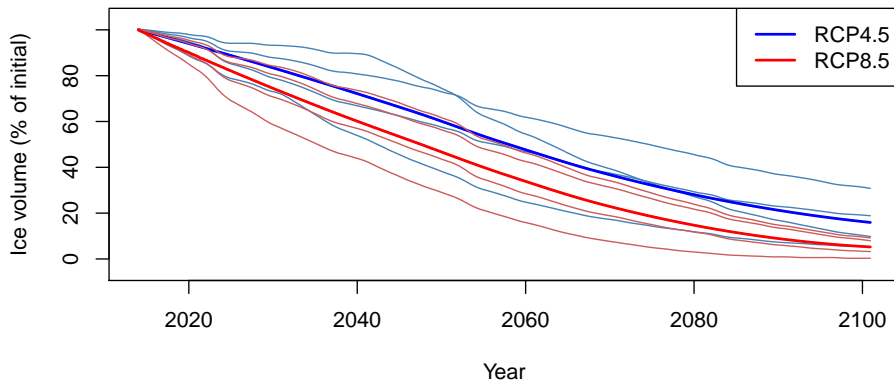
**Figure 13.** Modelled (dashed) and observed (solid) annual net mass balance at Mera Glacier, 1961 - 2007. Error bars for the modelled mass balances derived from the standard deviation of the annual mass balances extracted from 20 calibration runs, and error bars for the observed mass balances are from (Wagnon et al., 2013).



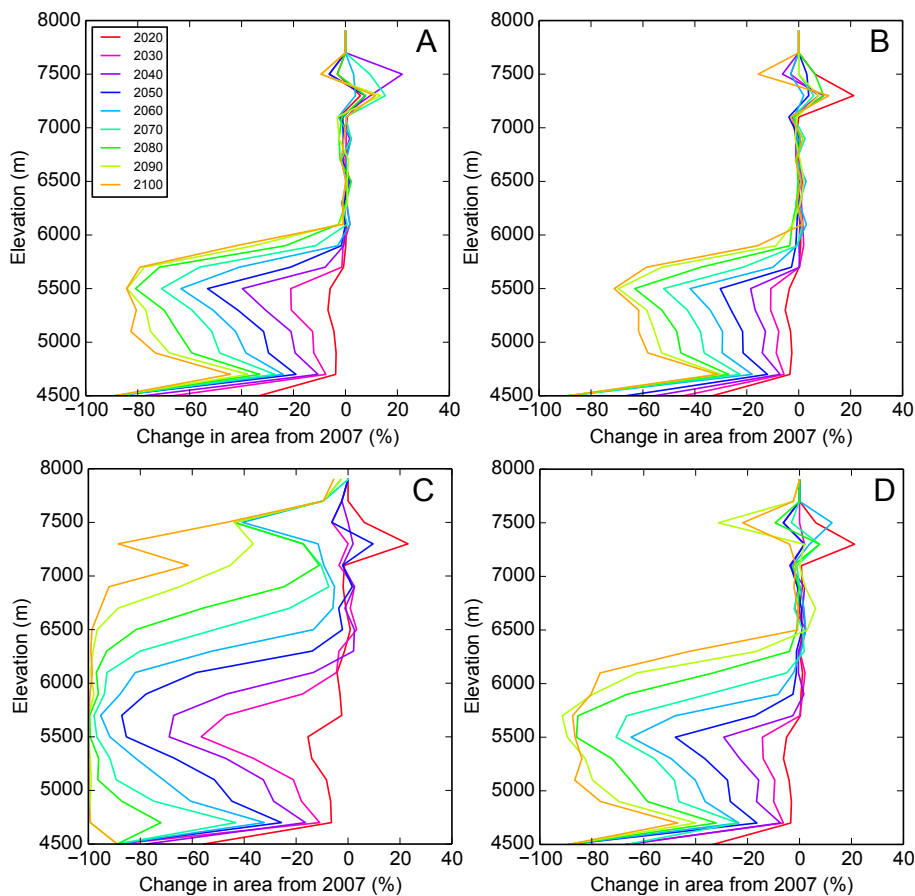
**Figure 14.** Glacier depths estimated from transverse ground-based GPR surveys and the mass balance and redistribution model, for (A) profile at 5350 m on Mera Glacier, (B) profile at 5520 m on Mera Glacier, and (C) profile at Changri Nup glacier (Figure 1). Ice depth estimates for all 20 calibration runs are given in gray, and the results for Run 5 are shown as a dashed black line.



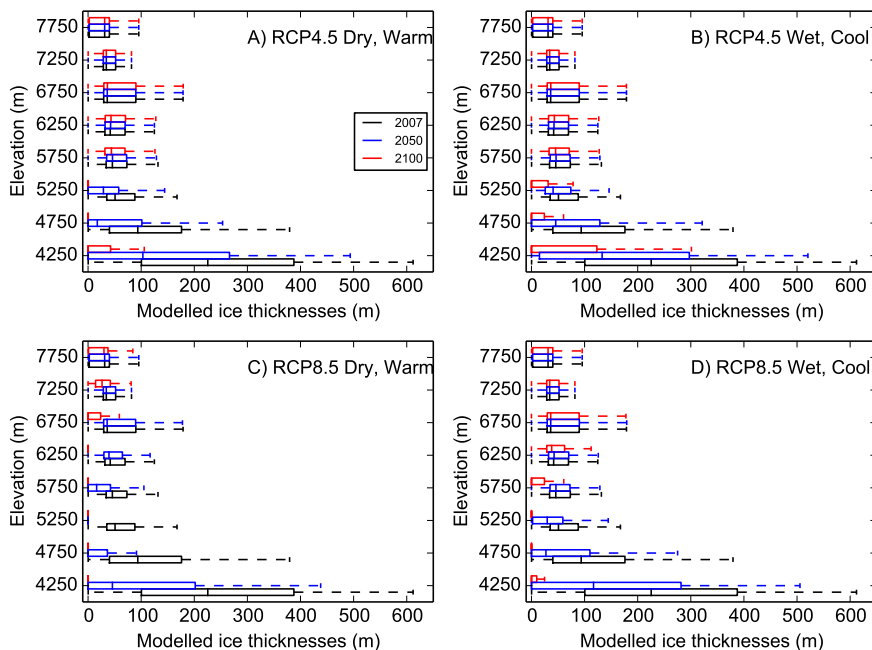
**Figure 15.** Rates of historical glacier area change below 5500 m ( $\% \text{ yr}^{-1}$ ) from the 20 model runs. Remotely sensed rates of glacier area change and Run 5 results are shown as black and gray points, respectively. The 1980's inventory contained inaccuracies related to the resolution of the imagery and the misclassification of snow as glacier ice, and an observed rate of change from 1980 to 1990 is not included here.



**Figure 16.** Sensitivity of modelled glacier volumes to decadal  $T$  and  $P$  anomalies from four RCP4.5 (blue) and four RCP8.5 (red) ensemble members (see Table 5 for details. Realizations are given as thin lines, and ensemble means are thick lines. All realizations are smoothed with a loess filter (span = 0.05) to minimize interannual variations.



**Figure 17.** Change in glacier area versus elevation for (A) the dry/warm RCP4.5 scenario, (B) the wet/cool RCP4.5 scenario, (C) the dry/warm RCP8.5 scenario, and (D) the wet/cool RCP8.5 scenario.



**Figure 18.** Distribution of modeled ice thicknesses by elevation band, for 2007 (initialization), 2050, and 2100. (A) dry/warm RCMP4.5 scenario, (B) wet/cool RCP4.5 scenario, (C) dry/warm RCP8.5 scenario, and (D) wet/cool RCP8.5 scenario.

**Table 1.** EVK2CNR meteorological stations used to validate downscaled APHRODITE temperature and precipitation fields.

Site	Latitude (°)	Longitude (°)	Elevation (m)
Lukla	27.69556	86.72306	2660
Namche	27.80239	86.71456	3570
Pheriche	27.89536	86.81875	4260
Pyramid	27.95903	86.81322	5035

**Table 2.** Fixed and calibrated model parameters, with initial values, range, and final calibrated values. Degree day factors varied within 1 standard deviation (SD) (Supplemental Material Immerzeel et al., 2010)

Parameter	Description	Units	Initial Value	Range	Calibrated Value
$\rho$	Ice density	$\text{kg m}^{-3}$	916.7	-	-
$g$	gravitational acceleration	$\text{m s}^{-2}$	9.81	-	-
$\tau_0$	Equilibrium shear stress	$\text{N m}^{-2}$	80000	-	-
$\nu$	Bedrock roughness	unitless	0.1	-	-
$T_S$	Snow/rain limit	$^{\circ}\text{C}$	0	-	-
$\gamma_T$	Daily vertical temperature gradient	$^{\circ}\text{C m}^{-1}$	variable	-	-
$C_{DOY}$	Temperature bias correction	$^{\circ}\text{C}$	variable	-	-
$R_{exp}$	Aspect dependence of ddf	unitless	0.2	-	-
$\beta_{TH}$	Threshold avalanching angle	$^{\circ}$	50	-	-
$R$	Material roughness coefficient	$\text{N m}^{-2} \text{ s}^{1/3}$	1.80E9	$\pm 5.00\text{E}8$	1.51E9
$ddf_C$	clean ice melt factor	$\text{mm } ^{\circ}\text{C}^{-1} \text{ d}^{-1}$	8.63	$\pm 1\text{SD}$	9.7
$ddf_D$	debris-covered ice melt factor	$\text{mm } ^{\circ}\text{C}^{-1} \text{ d}^{-1}$	3.34	$\pm 1\text{SD}$	4.6
$ddf_K$	Khumbu glacier melt factor	$\text{mm } ^{\circ}\text{C}^{-1} \text{ d}^{-1}$	6.7		8.6
$ddf_S$	snow melt factor	$\text{mm } ^{\circ}\text{C}^{-1} \text{ d}^{-1}$	5.3	$\pm 1\text{SD}$	5.4
$Z_C$	Height of precipitation maximum	m a.s.l.	6000	$\pm 500$	6268



**Table 3.** Parameter sets used in the calibration procedure. Degree day factors ( $ddf_n$ ) are given in units of  $\text{mm } ^\circ\text{C}^{-1} \text{ d}^{-1}$ ,  $R$  is unitless, and  $Z_C$  is in m. Mean ( $\bar{x}$ ) and standard deviation ( $\sigma$ ) are given at the bottom of the table.

Run	$ddf_C$	$ddf_D$	$ddf_K$	$ddf_S$	$R$	$Z_C$
1	10.1	2.4	5.7	5.1	965538934	5948
2	9.8	3.7	6.8	4.6	862185519	5974
3	9.2	4.1	8.5	3.6	1326340408	5544
4	8.8	1.7	5.3	5.7	2115148902	6392
5	9.7	4.6	8.6	5.4	1507211339	6268
6	8.9	1.9	6.8	4.3	1757035837	5712
7	9.3	3.6	7.3	6.6	1602852068	5810
8	8.9	2	7	5.3	1891517886	7175
9	9.3	2.9	8.2	5.7	965461867	6663
10	8.1	3.1	9	5.8	1966902971	6339
11	9.3	4.1	7	5.1	2119160369	5804
12	10.1	3.3	6.4	4.7	1183544033	5774
13	10.2	2.2	5.7	5.1	2027971886	5960
14	9.3	5.2	6.6	6.4	1642592045	5887
15	8.5	3.2	6.7	3.9	1674708607	5466
16	8.1	4.3	4.2	5.5	1278943171	6877
17	10.2	3.5	5.4	5.6	1687134148	6314
18	10.7	2	6.2	5.3	1920883676	6270
19	7.6	2.9	7.2	4.6	2402645369	5586
20	10.8	3.5	6	6.4	1885850339	5673
$\bar{x}$	9.3	3.2	6.7	5.2	1639181469	6072
$\sigma$	0.87	0.98	1.23	0.8	428282810	459

**Table 4.** Scores (unitless) from the 20 calibration runs versus independent calibration data. Calibration targets were observed extents of four large termini, basin-wide net mass balance of  $-0.40$  m (Nuimura et al., 2012), total glacier area of  $410 \text{ km}^2$  in 2010 (ICIMOD, 2011), and mean velocity of  $10 \text{ m yr}^{-1}$  on debris covered tongues (Quincey et al., 2009). Mean and standard deviation ( $\sigma$ ) of scores are provided at the bottom of the table, and scores for the selected run are in bold.

Run	Terminus extents	$B_a$	Total area	Velocity	Total Score
1	0.20	0.46	0.04	3.44	4.14
2	0.19	0.31	0.03	2.78	3.31
3	0.19	0.26	0.01	0.34	0.79
4	0.19	0.69	0.04	0.38	1.30
5	0.17	0.19	0.06	0.05	0.47
6	0.20	0.58	0.01	0.75	1.54
7	0.18	0.23	0.09	0.10	0.59
8	0.19	0.70	0.03	0.88	1.80
9	0.20	0.46	0.05	3.13	3.83
10	0.18	0.45	0.05	0.01	0.69
11	0.18	0.24	0.05	0.47	0.94
12	0.19	0.33	0.04	1.21	1.76
13	0.19	0.52	0.04	0.08	0.84
14	0.17	0.05	0.09	0.44	0.75
15	0.19	0.39	0.00	0.08	0.65
16	0.18	0.44	0.04	0.72	1.37
17	0.18	0.36	0.06	0.02	0.63
18	0.19	0.56	0.05	0.37	1.18
19	0.19	0.46	0.02	0.36	1.03
20	0.18	0.20	0.10	0.37	0.85
$\bar{x}$	0.19	0.39	0.04	0.80	1.42
$\sigma$	0.01	0.18	0.03	0.87	0.90

**Table 5.** Projected mean annual temperature and precipitation changes from 1961-1990 to 2021-2050, extracted from RCP4.5 and RCP8.5 CMIP5 runs. See Supplementary Information from Immerzeel et al. (2013) for more information.

Scenario	Description	dP (%)	dT (°C)	Model	Ensemble
RCP4.5	Dry, Cold	-3.2	1.5	HADGEM2-CC	r1i1p1
RCP4.5	Dry, Warm	-2.3	2.4	MIROC-ESM	r1i1p1
RCP4.5	Wet, Cold	12.4	1.3	MRI-CGCM3	r1i1p1
RCP4.5	Wet, Warm	12.1	2.4	IPSL-CM5A-LR	r3i1p1
RCP8.5	Dry, Cold	-3.6	1.7	HADGEM2-CC	r1i1p1
RCP8.5	Dry, Warm	-2.8	3.1	IPSL-CM5A-LR	r2i1p1
RCP8.5	Wet, Cold	15.6	1.8	CSIRO-MK3-60	r1i1p1
RCP8.5	Wet, Warm	16.4	2.9	CAN-ESM2	r2i1p1

**Table 6.** Mean ( $\bar{x}$ ) and standard deviation ( $\sigma$ ) in percent modelled glacier volume change for RCP4.5 and RCP8.5 end-members at 2050 and 2100.

Scenario	$\bar{x}_{2050}$	$\sigma_{2050}$	$\bar{x}_{2100}$	$\sigma_{2100}$
RCP4.5	-39.3	16.8	-83.7	11.2
RCP8.5	-52.4	14.5	-94.7	4.2