

Namur, 07 December 2014

Irina Gorodetskaya
Department of Earth and Environmental Sciences
Katholieke Universiteit Leuven, Belgium

Martin Schneebeli, Editor
The Cryosphere journal

Subject: Revision submission

Dear Editor,

We sincerely thank you for your work in handling our manuscript submitted to The Cryosphere journal "Cloud and precipitation properties from ground-based remote sensing instruments in East Antarctica". Please find below our detailed replies to both anonymous Reviewers uploaded to the Interactive Discussion, followed by the marked-up manuscript version. We would like to bring to your attention that the revised manuscript has two new coauthors: Wim Thiery, for his contribution to the new section on surface mass balance components, and Alexander Mangold, for his contribution to the observatory maintenance.

Kind regards,

Irina Gorodetskaya
on behalf of all Coauthors

Reply to Reviewer #1:

General Impression. This manuscript summarizes atmospheric measurements made at the Princess Elisabeth base in East Antarctica. These measurements of cloud, precipitation, and radiation are some of the first of their kind in Antarctica and certainly hold great value for the Antarctic research community. This paper serves to introduce the measurements and to provide an initial perspective on the types of results that can be drawn from them. In these regards, this paper is certainly worthy of being published. The scientific results themselves are relatively thin, which may be expected for an introductory paper of this nature. I would like to see a little more done to make the results more useful for the scientific community. Most of my comments will be relatively straightforward to address. One of them may take a little additional analysis.

I recommend acceptance of this manuscript subject to these generally minor, and one significant, comments.

We thank the Reviewer for his/her critical review and useful comments, which helped to improve the manuscript. Regarding the comment about the introductory nature of the paper: that was exactly the aim of this manuscript - to introduce the observatory, demonstrate its application for a wide variety of processes (using case studies) and investigate basic cloud and precipitation properties. Other papers already published by our group and colleagues (see the project website http://ees.kuleuven.be/hydrant/pubs_links) and in preparation focus on particular processes. The data are freely available for the research community for further applications.

Below we address each point raised by the Reviewer in detail with our replies in blue and the *corrected/new text highlighted in magenta both in the replies below and in the revised manuscript*.

Specific Comments 1) There are some places that need better descriptions:

*P4199, top: Should note that this facility is similar to many others globally in N. America, Europe, and elsewhere.

We agree that such observatories exist around the world, while in Antarctica this is the first of its kind. We have added in the revised Introduction:

"While observatories including similar or more advanced ground-based remote sensing instruments, with long-term measurements of cloud and precipitation properties, exist in glaciated regions of mid latitudes and in the Arctic (e.g., Löhnert et al., 2011; Shupe et al., 2011) this was lacking in Antarctica until now."

*P4206, line 9. What Z-S relationship was actually used? If not one then why multiple relationships and when are the different ones applied? Please specify exactly what was done.

The snowfall rate (S) uncertainty range was first calculated using six relationships derived by Matrosov (2007) for unrimed aggregate snowflakes modeled as spheroids. In the revised version (new Fig. 8 and Table 5), we have added also three relationships from Kulie and Bennartz (2009) for three different unrimed particle shapes (aggregates, three-bullet rosettes and low-density spherical snow particles) derived using recently published backscattering characteristics for each ice habit. These three relations from KB2009 represent the possible range of actually a much larger number of derived Ze-S relations, so we are estimating the Ze-S uncertainty with a large ensemble of particles. In Figure 8, the diamonds represent the mean values based on all Ze-S relationships, while the magenta bars indicate the entire range of retrieved S values (from min to max).

Applying multiple relationships is necessary to cover the uncertainty in S retrievals from radar Ze due to various backscattering properties of different snowfall particles and different particle size distributions. We don't have enough in-situ observations in this area to derive our own PE Ze-S relationship. However, we know that our location in Antarctica should receive dry snowfall, and the typical dry snow habits, which the Ze-S relationships used here are based on, have been observed in Antarctica (Konishi et al. 1998; Walden et al. 2003). Thus we believe that our ensemble of Ze-S relationships for dry snow covers the "true" Ze-S relation. We have clarified this in the revised text (please see the last paragraph of Section 3.2c).

Konishi, H., Wada, M., and Endoh, T.: Seasonal variations of cloud and precipitation at Syowa station, Antarctica, *Annals of Glaciology*, 27, 597–602, 1998.

Kulie, M. S. and Bennartz, R.: Utilizing Spaceborne Radars to Retrieve Dry Snowfall, *Journal of Applied Meteorology and Climatology*, 48, 2564–2580, doi:10.1175/2009JAMC2193.1, 2009.

Matrosov, S. Y.: Modeling Backscatter Properties of Snowfall at Millimeter Wavelengths, *Journal of the Atmospheric Sciences*, 64, 1727–1736, doi:10.1175/JAS3904.1, 2007.

Walden, V. P., Warren, S. G., and Tuttle, E.: Atmospheric Ice Crystals over the Antarctic Plateau in Winter, *Journal of Applied Meteorology*, 42, 1391–1405, doi:10.1175/1520-0450(2003)042<1391:AICOTA>2.0.CO;2, 2003.

*P4213, line 9-10. I understand the threshold for identifying liquid water from the ceilometer. But how are mixed-phase conditions identified? Based on earlier discussions in the methods section I think you use the same backscatter threshold. But you must also use some other information to identify that ice is also present?

Thank you for raising this very important point. Using a threshold applied to cloudy profiles without snowfall, we can identify if liquid was present. This can be a liquid layer alone without ice or a mixed phase cloud. We know whether these clouds are mixed-phase when doing case studies by the presence of ice in ceilometer backscatter signal below the liquid-containing layer, but we did not attempt to apply an automated algorithm to distinguish liquid-only from mixed-phase clouds for the entire time series analysis in Section 4.2. To make this clear, we use a definition 'liquid-containing' clouds, rather than 'mixed-phase' clouds throughout the revised text (except for the case studies where we did observe mixed-phase cloud structure with ice present below a liquid-containing layer).

2) I do not agree with some interpretations and/or I think that certain topics need clarification or further justification.

* p4200, line 8-11. Satellite measurements are indeed an important step forward for cloud observations. However, there are some very important limitations for polar cloud observations from satellite, especially the important low-level clouds. These limitations should not be neglected.

We agree and have added a comment to the revised Section 2 supporting it with references: *"...Despite tremendous progress in cloud observations from space, limitations in the characterization of low-level clouds and precipitation persist: they can remain undetected by CloudSat's radar (Marchand et al., 2008; Maahn et al., 2014), while CALIPSO's lidar is rapidly attenuated by cloud liquid water, leaving no information on atmospheric features occurring below the top of the liquid layer (Cesana et al., 2012)."*

Cesana, G., Kay, J. E., Chepfer, H., English, J. M., and de Boer, G.: Ubiquitous low-level liquid-containing Arctic clouds: New observations and climate model constraints from CALIPSO-GOCCP, *Geophysical Research Letters*, 39, L20 804, doi:10.1029/2012GL053385, 2012.

Maahn, M., Burgard, C., Crewell, S., Gorodetskaya, I. V., Kneifel, S., Lhermitte, S., Van Tricht, K., and van Lipzig, N. P. M.: How does the space-borne radar blind-zone affect derived surface snowfall statistics in polar regions?, *Journal of Geophysical Research: Atmospheres*, Accepted, doi:10.1002/2014JD022079

Marchand, R., Mace, G. G., Ackerman, T., and Stephens, G.: Hydrometeor Detection Using Cloud- sat — An Earth-Orbiting 94-GHz Cloud Radar, *Journal of Atmospheric and Oceanic Technology*, 25, 519–533, doi:10.1175/2007JTECHA1006.1.

* p4204, line 13-14. This is not exactly true. The effective emission height is at some depth into the cloud that is above the cloud base, even if the full depth of the cloud has an emissivity of 1.

We agree with this precision and have reformulated the 2nd paragraph of Section 3.2b including a more extensive discussion of other factors influencing T_{pyr} :

"For optically thick clouds the pyrometer temperature (T_{pyr} , °C) is determined by the infrared emission within the lowest part of the cloud. Though this is typically slightly colder than the temperature at cloud base, compensation by atmospheric emission below cloud base allows us to approximate T_{pyr} to the cloud base temperature. At the same time, for clouds residing within a temperature inversion, as frequently occurring in both polar regions (e.g., Mahesh et al., 2001a, b; Sedlar et al., 2012), the cloud emitting layer is shifted towards the cloud top, in which case T_{pyr} will exceed the cloud base temperature. Rathke et al. (2002) showed overall good correspondence between the effective cloud radiative temperatures obtained from the geometric and spectral methods versus the lidar/radiosonde values of cloud base temperatures for Arctic stratus clouds. Deviations were attributed mostly to cloud inhomogeneity, in particular variable cloud water content, and to presence of strong in-cloud temperature gradients. For optically thinner clouds, both the temperature profile and variable cloud optical thickness strongly

influence cloud emitted radiances and therefore the observed T_{pyr} . Measurements in Antarctica show predominance of optically thin clouds (cloud optical depth < 1) over the Antarctic plateau (Mahesh et al., 2001b), and frequent optically thick clouds at the Antarctic coast (Ricchiazzi et al., 1995). Here, we use raw T_{pyr} measurements at 1-min temporal resolution without distinguishing between optically thin and thick clouds."

Mahesh, A., Walden, V. P., and Warren, S. G.: Ground-Based Infrared Remote Sensing of Cloud Properties over the Antarctic Plateau. Part II: Cloud Optical Depths and Particle Sizes, *Journal of Applied Meteorology*, 40, 1279–1294, 2001b.

Rathke, C., Neshyba, S., Shupe, M., Rowe, P., and Rivers, A.: Radiative and microphysical properties of Arctic stratus clouds from multiangle downwelling infrared radiances, *Journal of Geophysical Research*, 107, 4703, doi:10.1029/2001JD001545, <http://doi.wiley.com/10.1029/2001JD001545>, 2002.

Ricchiazzi, P., Gautier, C., and Lubin, D.: Cloud scattering optical depth and local surface albedo in the Antarctic : Simultaneous retrieval using ground-based radiometry C0–, *Journal of Geophysical Research*, 100, 21 091–21 104, 1995.

Sedlar, J., Shupe, M. D., and Tjernström, M.: On the Relationship between Thermodynamic Structure and Cloud Top, and Its Climate Significance in the Arctic, *Journal of Climate*, 25, 2374–2393, doi:10.1175/JCLI-D-11-00186.1, <http://journals.ametsoc.org/doi/abs/10.1175/JCLI-D-11-00186.1>, 2012.

* p4205, line 18-20. Qualitative photographs of ice crystals are not a great way to get their maximum size. Also, at what size of crystals will there start to be non-Rayleigh effects on the MRR?

Photographs of freshly fallen snowflakes give an idea of their magnitude and shapes. The size limit where snow particles start to deviate from Rayleigh scatterers is not only dependent on size but also on its habit or density. In the dry Antarctic environment processes enhancing snow particle density like riming or melting are very unlikely and from in-situ observations we know that most snowfall is comprised by low-density snow particles. For this kind of snow it can be expected from scattering theory that even larger snow particle sizes still behave as Rayleigh scatterers. In any case, these different scattering properties are covered in our selected Ze-S relationships, which include a wide range of habits, snow particle densities and PSDs. We only wanted to express that the snowfall particles observed at PE station (from photographing freshly fallen snow particles when possible) are in general not systematically different from the typical low-density Antarctic snowfall, supporting the argumentation that the usual dry-snow Ze-S relations can be applied to our observations.

*p4208, line 13 and forward. I have a hard time believing that “the extended layer of ice observed below the liquid layer on 7 Feb lead to a substantial increase in T_{pyr} . . .” Or an increase in LWin (line 24). This is especially true since there was not that much ice mass present; MRR didn’t see anything. The text is true that mixed-phase clouds have important radiative effects, but these are typically driven by the liquid water that is present. It is most likely that the variability in T_{pyr} and LWin during this case was linked to variability in the LWP. Furthermore, the apparent increase in ice production later in the

case is probably a consequence of increased LWP, although this last point is purely speculative without actual retrievals of LWP.

We agree and have reformulated the statements in Section 4.1.2 as following:

"The extended layer of ice observed below the liquid layer on 7 February occurred together with a substantial increase in T_{pyr} ..."

" LW_{in} was also increased during the presence of an extended ice layer below the liquid layer on 7 February. Simultaneously enhanced ice production below a liquid layer and increased T_{pyr} and LW_{in} could be manifestations of increased cloud liquid water path."

*P4213, lines 24 and after. Signal attenuation is important for lidars/ceilometers and prevents viewing of higher cloud layers. What is the impact of attenuation on Fig. 6b? A statement addressing this issue should be added.

We have extended our statement about decreased sensitivity of ceilometer with height in Section 4.2.1:

"The decrease of frequency of occurrence with height for the low β_a values can be related, as for the radar, to the decreasing sensitivity of ceilometer with height leading to a possible underestimation of high optically thin ice clouds (Van Tricht et al., 2014)."

*P4217, Line 22 and beyond. Three of the elements in this list refer to surface radiative fluxes and radiative forcing. It is important here to note that this is restricted to only IR or LW radiative effects because that is all that is studied. SW fluxes can also be quite important and typically act in the opposite direction from LW fluxes.

We have reformulated that the list rather shows *"the potential of the observatory"* for investigating both SW and LW radiative fluxes. We do show the effects of cloud properties on net SW fluxes (Fig. 4a), but don't investigate cloud radiative forcing in detail (this is the subject of our current research).

*P4218, line 11-12. Why are liquid-containing clouds only observed in the 1-3 km range? Why are there none observed <1 km? When considering polar clouds in general, there are certainly a lot of liquid-containing clouds <1km. What is special about this location and/or data set? Is there a mechanism that can explain this? Generally the temperatures will be a bit warmer towards the surface, so that is probably not a good explanation. In any case, something clearly needs to be explained about this point because it goes in the face of our general understanding of polar clouds.

Indeed, observations in the Arctic show frequent liquid-containing cloud occurrence near the surface. However, our statistics concern the liquid-containing cloud LAYERS, and in the case of mixed-phase clouds the ice layer found below these liquid-containing layers can extend close to the surface. We have clarified this in the revised text (section 4.2.1):

"Combining these results with Fig. 6c points to a large vertical range of the ice layers, including both ice-only clouds and mixed phase clouds. As demonstrated by the case

studies (section 4.1), mixed-phase clouds at PE with liquid- containing layers above 1 km can have ice layers extending close to the surface."

A deeper investigation is required to understand mechanisms behind mixed-phase cloud properties at PE and is beyond the goals of this introductory paper. Preliminary analysis shows that location of liquid-containing cloud layers at 1-3 km agl can be related to the specifics of moisture advection to PE. Isentropic analysis of specific humidity (using ERA-Interim re-analysis data) showed that moisture fluxes tend to be stronger at higher levels (285 K isentropic surface compared to 275 K surface) and related to lower latitude moisture sources. Also, fast building-up of strong near-surface temperature inversions at PE can favor decoupling of the liquid-containing clouds from the surface.

*p4218, line 13-14. Ice clouds are not necessarily most frequent in polar regions. There are Arctic data sets that show liquid water occurring just as often as ice, especially in the summer season.

We agree with this remark and deleted this statement, adding instead a comparison to the liquid-containing clouds occurrence in the Arctic to the revised Section 4.2.2:

" The frequency of liquid-containing clouds at PE is lower than found at various Arctic locations (32-56%, Shupe, 2011), or at Greenland summit (from 10% in winter up to 40-60% during summer, Shupe et al., 2013; Van Tricht et al., 2014)."

3) Since there is very little information of this nature over Antarctica and East Antarctica, these results will be quite interesting to the research community. With that in mind it is important that the results are put in the proper context so that they can be most useful. One of the most challenging aspects of the interpretation is the seasonal bias to the data set. How does this impact the overall results? What information is available on winter conditions? Even if it is difficult to quantify the impact of the seasonal bias to the data set, this point should at least be discussed clearly so that these results are not incorrectly taken to describe the full annual cycle of conditions in the region.

Measurements gaps each winter due to the PE base power failures have been a real issue. The data availability has been already noted in the beginning of Section 4.2.1 ("*...we provide a compilation of basic cloud and precipitation statistics derived from the remote-sensing instruments based on the available measurement periods during 2010–2013 (14 months for cloud measurements mainly in summer/autumn and 26 months of snowfall measurements including an entire year, see Table 1 for exact measurement periods for each instrument).*") We have also added a statement in the revised Conclusions that cloud statistics are "*restricted to summer and autumn/beginning of winter).*"

4) As argued in the text, attribution of surface accumulation is very important. The paper

discusses the different mechanisms for impacting net surface accumulation and argues that snowfall events are the most important for surface accumulation. This could indeed be the case; however, snowfall is estimated from a Z-S power-law relationship that was derived from a different location with likely different snow conditions. There is no effort here to evaluate the quality or applicability of the applied snowfall retrieval. Thus, it is not clear that this is even a good retrieval. What is the retrieval uncertainty? To address this issue in an aggregate sense an accumulation closure analysis should be included in the paper. Give the measured surface accumulation and the knowledge of the other mechanisms, do these equate? How close are they? Do they indeed suggest that the snowfall retrieval is any good? It is entirely conceivable that the snowfall retrieval is significantly wrong. How would that impact the results that distinguish falling from blowing snow? I have a hard time believing these important qualitative results regarding the surface accumulation without a more in depth closure analysis and some sort of evaluation of the retrieval uncertainty.

As we already stated above, the snowfall rate (S) uncertainty range is now calculated using nine relationships for dry (unrimed) snow that is typical in Antarctica: six relationships derived by Matrosov (2007) for unrimed aggregate snowflakes modeled as spheroids and three relationships from Kulie and Bennartz (2009) for aggregates, three-bullet rosettes and low-density spherical snow particles. New Figure 8 shows much larger uncertainty compared to using only Matrosov 2007 relationships. The typical snow habits used by both M07 and KB2009 have been observed in Antarctica at Syowa and South Pole (Konishi et al. 1998; Walden et al. 2003). Although we don't have enough in-situ observations in our study region to derive our own PE Ze-S relationship, we believe that the chosen ensemble of Ze-S relationships for dry snow covers the "true" Ze-S relation, i.e. the real S lies within the uncertainty range for each snowfall event (new Fig. 8).

Further, we have addressed the request of the Reviewer to consider accumulation closure and compare other surface mass balance (SMB) components with snowfall retrievals (new Section 4.2.4). That was possible for 2012, when radar snowfall measurements were available continuously. At PE, SMB (accumulated snow height changes, SH) = $S - SUs - SUDs - ERds$, where S is snowfall, SUs and $SUDs$ are surface and drifting snow sublimation, respectively, and $ERds$ is the wind-driven erosion/deposition of drifting snow. SUs , $SUDs$ and $ERds$ terms are typically negative (snow removal), but can be also positive (deposition) under specific conditions. Net SMB (SH) is measured by the AWS sonic height ranger. Sublimation terms are calculated using the AWS measurements as described by Thiery et al. (2012). Using radar-derived S , we estimate $ERds$ as a residual SMB term. In the new section 4.2.4, we present year-total estimates of all SMB components giving their uncertainties, as well as cumulative daily evolution of SMB component during the year 2012 (new figure 9).

As was stated by many publications (e.g., Frezzotti et al. 2013, Groot Zwaafnik et al. 2013, Thiery et al. 2012), the major challenge in polar science is attributing local snow accumulation to precipitation and/or the wind-driven snow erosion/deposition. This is especially true at PE, where snowfall is almost always accompanied by strong winds. Using the radar-measured snowfall rates at high temporal resolution is an important step

in understanding SMB changes, despite the existing uncertainty in $Ze-S$ relationships. At the same time, precise estimation of local wind-driven snow removal term ($ERds$) and thus a real closure analysis is not possible using only point AWS measurements and requires high-resolution regional climate modeling resolving snow transport and associated processes (which is beyond the goals of this study).

New and/or corrected text related to this subject can be found in the following sections of the revised manuscript: Abstract, Section 3.2c, Section 4.2.3, Section 4.2.4 (new section), and Conclusions. Figure 8 has been updated now showing a full range of expected S values. New Figure 9 has been added showing cumulative SMB components during 2012.

Frezzotti, M., Scarchilli, C., Becagli, S., Proposito, M., and Urbini, S.: A synthesis of the Antarctic surface mass balance during the last 800 yr, *The Cryosphere*, 7, 303–319, doi:10.5194/tc-7-303-2013, 2013.

Groot Zwaaftink, C. D., Cagnati, A., Crepaz, A., Fierz, C., Macelloni, G., Valt, M., and Lehning, M.: Event-driven deposition of snow on the Antarctic Plateau: analyzing field measurements with SNOW-PACK, *The Cryosphere*, 7, 333–347, doi:10.5194/tc-7-333-2013, 2013.

Thiery, W., Gorodetskaya, I. V., Bintanja, R., Van Lipzig, N. P. M., Van den Broeke, M. R., Reijmer, C. H., and Kuipers Munneke, P.: Surface and snowdrift sublimation at Princess Elisabeth station, East Antarctica, *The Cryosphere*, 6, 841–857, doi:10.5194/tc-6-841-2012, 2012.

Technical Corrections. P4199, line 24 and p4200, line 3: “year-round” P4202, line 25: “instrument” P 4212, line 11: “by and large”

All technical corrections have been addressed.

The revised manuscript also contains some additional text improvements highlighted in magenta.

Reply to Reviewer 2:

This paper describes a new observatory of clouds, precipitation and blowing snow in Antarctica. The instruments which are used will allow the scientific community to study in more details polar clouds and more specifically mixed phase clouds. The experimental set-up is well illustrated by the analysis of case studies. In this sense the paper is very original. It is also very clear and well written. I have only a few minor comments that have to be addressed before the paper is published.

We thank the Reviewer for his/her positive feedback and appreciation of the paper. Below we address each point raised by the Reviewer in detail with our replies in blue and the *corrected/new text highlighted in magenta both in the replies below and in the revised manuscript.*

p. 4213, 2nd para. The 2nd sentence should be clarified : what do you mean by most frequent (which frequency/ies) ?

We provide frequency estimates in the revised text: *"Precipitation intensity near the surface (400 m agl) is most frequent within $-5 < Z_e < 10$ dBz (78% of snowfall values at this range)..."*

p. 4214, 2nd full para. The criteria used to exclude snowfall should be recalled.

In this paragraph we discuss vertical range of ice and liquid-containing clouds, and think that recalling snowfall exclusion criteria here would divert the focus.

p. 4216. have you installed an acoustic snow height ranger at Princess Elizabeth ?

Yes, snow height is measured using SR50 sonic height ranger. We have reiterated this information in Section 4.2.3 and also added to Section 3.1 (observatory overview).

p. 4217, 3rd line. The reference Gallée et al. (2005, Ann. Glac.) should be also appropriate.

We thank the reviewer for this useful reference for drifting snow sublimation discussion - it has been added (the statement has been moved to the Introduction).

Figures: Characters size of figures 1 and 6 should be increased

Figures have been updated as requested.

Manuscript prepared for The Cryosphere Discuss.
with version 2014/05/22 6.83 Copernicus papers of the L^AT_EX class copernicus.cls.
Date: 7 December 2014

Cloud and precipitation properties from ground-based remote sensing instruments in East Antarctica

**Irina V. Gorodetskaya¹, Stefan Kneifel^{2,3}, Maximilian Maahn², Kristof Van Tricht¹,
Wim Thiery¹, Jan H. Schween², Alexander Mangold⁴, Susanne Crewell², and Nicole P.
M. Van Lipzig¹**

¹Department of Earth & Environmental Sciences, KU Leuven - University of Leuven, Heverlee, Belgium

²Institute for Geophysics and Meteorology, University of Cologne, Cologne, Germany

³McGill University, Montreal, Canada

⁴Royal Meteorological Institute of Belgium, Uccle, Belgium

Correspondence to: Irina V. Gorodetskaya (Irina.Gorodetskaya@ees.kuleuven.be)

Abstract

A new comprehensive cloud-precipitation-meteorological observatory has been established at Princess Elisabeth base, located in the escarpment zone of Dronning Maud Land, East Antarctica. The observatory consists of a set of ground-based remote sensing instruments (ceilometer, infrared pyrometer and vertically profiling precipitation radar) combined with automatic weather station measurements of near-surface meteorology, radiative fluxes, and snow accumulation. In this paper, the observatory is presented and the potential for studying the evolution of clouds and precipitating systems is illustrated by case studies. It is shown that the synergistic use of the set of instruments allows for distinguishing ice, **mixed-phase liquid-containing** and precipitating clouds, including some information on their vertical extent. In addition, wind-driven blowing snow events can be distinguished from deeper precipitating systems. Cloud properties largely affect the surface radiative fluxes, with liquid-containing clouds dominating the radiative impact. A statistical analysis of all measurements (in total 14 months mainly in summer/autumn) indicates that these liquid-containing clouds occur during as much as 20% of the cloudy periods. The cloud occurrence shows a strong bimodal distribution with clear sky conditions 51% of the time and complete overcast conditions 35% of the time. Snowfall occurred 17% of the cloudy periods with a predominance of light precipitation and only rare events with snowfall $> 1 \text{ mm hour}^{-1}$ water equivalent (w.e.). Three of such intensive snowfall events occurred during 2011 contributing to anomalously large annual snow accumulation. **The multiyear deployment of a precipitation radar in Antarctica allows to** assess the contribution of the snowfall to the local surface mass balance. **During 2012, snowfall rate was $110 \pm 10 \text{ mm w.e. year}^{-1}$, from which surface and drifting snow sublimation removed 15 ± 7 and $10 \pm 2 \text{ mm w.e. year}^{-1}$, respectively (in total 23% of snowfall). Given the measured yearly snow accumulation of $52 \pm 3 \text{ mm w.e.}$, the residual term of $33 \pm 10 \text{ mm w.e. year}^{-1}$ was attributed to the wind-driven snow erosion.** Large accumulation events ($> 10 \text{ mm w.e. day}^{-1}$) during the radar measurement period of 26 months were always associated with snowfall, but at the same time other snowfall events did not always lead to accumulation. In general, this

promising set of robust instrumentation allows for improved insight in cloud and precipitation processes in Antarctica and can be easily deployed at other Antarctic stations.

1 Introduction

Knowledge of the Antarctic hydrologic cycle is essential in order to assess potential future changes of the Antarctic surface mass budget (SMB), which is one of the factors affecting global sea level (IPCC, 2013; Gregory and Huybrechts, 2006; Krinner et al., 2007; Ligtenberg et al., 2013; Rignot et al., 2011; Uotila et al., 2007; Van den Broeke et al., 2011). Clouds are among key components of the hydrologic cycle serving as the agents linking water vapor transport into Antarctica with precipitation, determining its amount and spatial distribution. Correct representation of cloud condensate amount and phase partitioning in climate models is crucial for simulation of Antarctic precipitation timing and spatial distribution, especially when orographic effects are present (Wacker et al., 2009). Via their radiative forcing, clouds also play a significant role in the Antarctic surface energy budget affecting air and surface temperatures and heat flux exchange of the snow surface with the air above and deeper snow layers (Bintanja and Van den Broeke, 1996; Van den Broeke et al., 2004; Van den Broeke et al., 2006; Vihma et al., 2011). Bennartz et al. (2013) demonstrated a dramatic example of cloud influence on the ice sheet surface energy budget, where radiative forcing of the liquid-containing clouds coupled with warm air advection was responsible for the surface melt on top of the Greenland ice sheet in July 2012. Liston et al. (1999) pointed out that cloud radiative forcing is a potential player in sub-surface melt water production in the Antarctic near-coastal blue-ice areas.

The extreme environment and climate of the Antarctic ice sheet both lead to unique cloud properties and poses significant difficulties in cloud and precipitation observations. As found also in the Arctic, low temperatures favor formation of thin ice clouds at all heights including near the surface during the entire year as compared to their occurrence globally only in the upper troposphere (Grenier et al., 2009; Bromwich et al., 2012). Thin ice clouds can have an important effect on the surface and top-of-atmosphere energy budget in the polar regions (Girard and Blanchet, 2001; Lampert et al., 2009). Further, mixed-phase clouds containing super-

cooled liquid water at air temperatures as low as -38°C to -40°C (below which homogeneous ice nucleation occurs) have been observed over the Antarctic ice sheet during short measurement campaigns (Lachlan-Cope, 2010; Walden et al., 2005). Lidar measurements at the near-coastal Antarctic stations also indicated frequent occurrence of liquid-containing clouds (Nott and Duck, 2011). Presence of liquid water has an important effect on cloud radiative properties by increasing cloud optical thickness and longwave emissivity (e.g., Turner et al., 2007). It is also an important player in precipitation formation favoring ice particle growth (Hogan et al., 2003a; Morrison and Pinto, 2005; Shupe and Intrieri, 2004; Sun and Shine, 1994). Identifying ice and liquid-containing clouds is thus of high importance for understanding both precipitation processes and energy budget over the Antarctic ice sheet.

Another important challenge in polar climate science is to understand complex mechanisms controlling snow accumulation at different time and spatial scales (Frezzotti et al., 2007, 2013). In particular, this refers to attributing the local and regional accumulation variability to the snowfall and/or drifting/blowing snow. Local snow accumulation is not necessarily driven by precipitation and at the same time precipitation-driven accumulation can be greatly reduced due to the drifting snow erosion (Das et al., 2013; Groot Zwaafink et al., 2013; Lenaerts et al., 2012a, b). Drifting snow sublimation also may have a significant contribution to the snow ablation especially in the high katabatic wind regions (Gallée et al., 2001, 2005; Lenaerts et al., 2012a, b; Thiery et al., 2012).

A new comprehensive observatory on cloud-precipitation-meteorological interactions has been established in the escarpment zone of Dronning Maud Land, East Antarctica, aiming to improve understanding of Antarctic cloud properties and different components of the SMB. The observatory consists of a set of basic and robust ground-based remote sensing instruments, namely, ceilometer, infrared pyrometer and vertically profiling precipitation radar (presently the only precipitation radar over the Antarctic ice sheet). In addition, an automatic weather station (AWS) provides hourly mean near-surface meteorology, surface radiative fluxes, 1-m snow temperature profile and snow accumulation (Gorodetskaya et al., 2013). While observatories including similar or more advanced ground-based remote sensing instruments, with long-term measurements of cloud and precipitation properties, exist in glaciated regions of mid latitudes

and in the Arctic (e.g., Löhnert et al., 2011; Shupe et al., 2011) this was lacking in Antarctica until now.

The specific combination of ground-based remote sensing measurements is intended to derive several key cloud and precipitation characteristics, including vertical structure of clouds and precipitation, cloud base height and temperature, identification of ice-only and **mixed-phase liquid-containing** clouds, and precipitation intensity. Further, the occurrence of ice virga (precipitation not reaching the surface) and its association with liquid cloud layers can be studied. Combination of the ground-based remote sensing instruments with an AWS allows studying cloud radiative forcing and relating snow accumulation to precipitation with a potential to distinguish between local accumulation due to snowfall or clear sky drifting snow. The goal of collecting these data is to perform detailed process-based model evaluation and improve cloud and precipitation parameterizations, required for Antarctic climate simulations (Bromwich et al., 2012; Gallée and Gorodetskaya, 2008; Wacker et al., 2009). Furthermore, the data can be used to evaluate and complement satellite data from similar sensors (e.g., Maahn et al., 2014).

The present paper demonstrates the potential of the observatory by providing detailed case studies and presents statistics of cloud and precipitation properties based on the available measurement periods during 2010-2013. In addition, year-around radar snowfall measurements during 2012 are used for snowfall analysis together with snow accumulation and SMB components. It gives insight about the ice and **mixed-phase liquid-containing** cloud properties, precipitation intensity and height, contribution of snowfall to SMB, and occurrence of strong blowing snow events. The paper is structured as following: historical background related to cloud and precipitation measurements is given in section 2, the observatory and data post-processing are described in section 3, results are provided in section 4 subdivided into two parts – case studies and long-term series analysis based on the available measurement period. Conclusions are given in section 5.

2 Historical background

Observations of clouds and precipitation in Antarctica can be dated back to the first exploratory expeditions, most notably year-round hourly meteorological observations during de Gerlache expedition on board Belgica during 1898-1899 and Roald Amundsen's expedition to the South Pole in 1911-1912. During both expeditions, detailed information on cloud amounts, types and snowfall was recorded (Arctowski, 1904; Mohn, 1915). The longest cloud and precipitation records in Antarctica (since 1950s) are available via visual observations of cloudiness, cloud types, precipitation and other weather phenomena at several year-round Antarctic stations (Rusin, 1964; Averianov, 1990; Bryazgin, 1990; Hahn and Warren, 2003; Turner and Pendlebury, 2004). Since the beginning of satellite era in 1979, cloud occurrence and some properties have been derived from passive satellite observations, however, serious limitations were encountered over ice/snow surfaces (Berque et al., 2011; Lazzara et al., 2003; Town et al., 2007). The launch of active sensors (lidar and radar) on the A-train satellites (Stephens et al., 2002) marks another important step especially for polar cloud observations, providing vertical profiles of cloud and precipitation microphysical and radiative properties (e.g., Grenier et al., 2009; Winker et al., 2010; Devasthale et al., 2011; Henderson et al., 2013). **CloudSat's radar measurements provided an opportunity to estimate the climatology of the Antarctic snowfall (Palermé et al., 2014). Despite tremendous progress in cloud observations from space, limitations in the characterization of low-level clouds and precipitation persist: they can remain undetected by CloudSat's radar (Marchand et al., 2008; Maahn et al., 2014), while CALIPSO's lidar is rapidly attenuated by cloud liquid water, leaving no information on atmospheric features occurring below the top of the liquid layer (Cesana et al., 2012).** Cloud fraction and optical thickness have also been approximated using near-surface broadband longwave radiation measurements (Kuipers Munneke et al., 2011; Town et al., 2007; Van den Broeke et al., 2006). Recently available advanced ground-based remote sensing and airborne measurement techniques provide valuable insights into cloud and precipitation microphysical properties (e.g., Lachlan-Cope, 2010; Lawson et al., 2006; Morley et al., 1989; Walden et al., 2003). These measurements, however, are usually limited to short periods requiring significant maintenance efforts,

costs, and power/logistics demands. Ground-based remote sensing instruments, operated during different periods at various locations over the Antarctic ice sheet, provided valuable statistics about cloud and precipitation properties. Information on cloud base height and phase has been obtained from lidar measurements at various Antarctic locations (Del Guasta et al., 1993; Shio-
5 bara et al., 2003; Mahesh et al., 2005; Nott and Duck, 2011). Ceilometers have been mostly used for aviation reports at several Antarctic stations (e.g., Halley, Neumayer, Novolazarevskaya, South Pole, Terra Nova). Measurements at South Pole during the entire year of 1992 using ground-based infrared remote sensing techniques provided information on cloud base heights and optical depths (Mahesh et al., 2001a, b). Observations of snowfall rate were collected year-
10 round in 1989 at Syowa station using ground-based radars and precipitation gauges (Konishi et al., 1998). Bromwich et al. (2012) provides an extensive overview of existing Antarctic cloud data from various measurement techniques.

3 HYDRANT observatory

3.1 Overview

15 The Antarctic environment with its especially harsh conditions and difficult accessibility calls for measurements using robust instruments requiring minimal maintenance, but which still provide crucial information on cloud and precipitation properties on a long term. The HYDRANT project ("The atmospheric branch of the hydrologic cycle in Antarctica") tries to fulfill this demand with its set of ground based remote sensing instruments providing high vertical and
20 temporal resolution of cloud and precipitation properties on a long-term combined with near-surface meteorological and snow accumulation measurements. The base for our measurements is the Princess Elisabeth (PE) station built on the Utsteinen Ridge, north of the Sør Rondane mountain chain, in Dronning Maud Land (DML), in the escarpment zone of the East Antarctic plateau (71°57' S, 23°21' E, 1392 m amsl, 173 km from the coast (Fig. 1). Utsteinen Ridge
25 is oriented in a north–south direction and has a length of 700 m long, width of approximately 16 m protruding ~20 m above the surrounding snow surface (Pattyn et al., 2009). Inaugurated

in February 2009, PE base is designed as “zero-emission” station relying mostly on wind and solar power. Manned only during summer season (November-February), the station itself and the research instruments are controlled remotely via year-round satellite connection. Such a concept minimizes local emissions, which can be particularly important not only for boundary-layer aerosol measurements, but also for cloud properties downwind due to the role of aerosols in cloud formation and the relatively pristine Antarctic atmosphere.

The measurement site is characterized by a relatively mild climate with a rather high frequency of synoptic events under cyclonic influence and a lack of katabatic drainage of cold air from the plateau due to mountain sheltering (Gorodetskaya et al., 2013). Strong easterly winds are associated with synoptic regimes, while south-southeasterly relatively weak winds are mostly of katabatic origins. The low katabatic wind speeds together with cloud-free skies lead to significant surface cooling and building up of strong temperature inversions (Gorodetskaya et al., 2013; Thiery et al., 2012). The site has also large interannual variability in snow accumulation (Gorodetskaya et al., 2013, 2014).

An overall description of the HYDRANT instruments and their measurement periods are given in Table 1. Detailed description of the cloud and precipitation ground-based remote sensing instruments and their products are given in Tables 2 – 4. The instruments include (i) – a ceilometer (Table 2), providing vertical profiles of atmospheric attenuated backscatter coefficients from which one can derive cloud base height, cloud vertical structure and information on cloud phase; (ii) – an infra-red pyrometer (Table 3) providing effective cloud radiative temperature; (iii) – a Micro Rain Radar (MRR) (Table 4) providing vertical profiles of spectral signal power, from which one can derive effective reflectivity Z_e , mean Doppler velocity of the falling particles, and spectral width. The MRR was originally designed to derive properties of rain (drop size distribution, rain rate) using a relation between drop sizes and fall speed. Recently, new algorithms have been developed extending MRR application to solid precipitation (Kneifel et al., 2011; Maahn and Kollias, 2012; Colle et al., 2014). In addition, a webcam is installed on the PE roof facing the ground-based instruments and Utsteinen nunatak, providing weather, cloud and instrument monitoring. **The present study is based on the data obtained during 2010-2013 with 14 months of cloud measurements mainly in austral summer and au-**

tumn/beginning of winter and 26 months of snowfall measurements including one entire year. Measurements presently continue and efforts are made to prevent power failures at PE base that have interrupted winter cloud measurements until now.

Cloud and precipitation measurements are combined with AWS measurements providing hourly data on the near-surface air temperature and relative humidity with respect to ice (RH_i), wind speed and direction, pressure, incoming and outgoing longwave (LW) and shortwave (SW) radiative fluxes, 1-m snow temperature profile and net snow height changes using a sonic snow height ranger. Yearly snow density measurements are performed every summer season in the AWS vicinity to convert measured snow accumulation during the previous year to water equivalent (w.e.). Gorodetskaya et al. (2013) provide detailed information about the AWS instruments and data processing.

The project website (<http://ees.kuleuven.be/hydrant>) contains raw data quicklooks, information about the instruments and measurement campaigns, as well as information about available data products. Data are stored as netCDF files and are freely available upon request via the project website.

3.2 Remote sensing data and post-processing methods

All remote sensing instruments are installed next to each other on the PE base roof pointing vertically (Fig. 1). Such installation avoids obstacles in the field of view and ensures that different instruments observe as close as possible the same volume (see Tables 2 – 4 for the instruments fields of view). Location on the roof of the base about 10 m above the ridge also minimizes the instrument view obscuration by shallow drifting snow.

a) Ceilometer

The ceilometer (Vaisala CL31), is a single wavelength lidar system without polarization with emitted laser pulse wavelength of 910 nm (Table 2, Fig. 1). It reports the attenuated backscatter profile ($\beta_a = \beta(z)\tau^2(z)$, $\text{sr}^{-1} \text{m}^{-1}$), derived using the lidar equation by the Vaisala processing system (Münkel et al., 2006; Pal et al., 1992). Here $\beta(z)$ is the true backscatter coefficient at distance z for the wavelength of the emitted laser pulse, and $\tau^2(z)$ is the two-way attenuation of the lidar signal due to the transmittance of the atmosphere between the lidar and the scattering

5 volume. Useful reported β_a profile ranges from 10 m up to 7700 m above ground level (agl) with 10 m vertical resolution. The reported β_a includes range normalization by multiplying the received ceilometer power with z^2 . It also includes sensitivity normalization by calibrating the signal with the instrument-specific factors (Münkel et al., 2006). Percentage of the window transmission is continuously reported and except for strong snowfall events it has been > 99% maintained by window ventilation and heating. The final Vaisala raw measurement profile of β_a (at 15-sec temporal resolution) contains noise reduction by summing multiple high-frequency backscatter pulses.

10 Cloud/precipitation occurrence and base height are identified using the Polar Threshold (PT) algorithm developed specifically for polar regions (Van Tricht et al., 2014). The algorithm identifies the lowest boundary of a hydrometeor layer including optically thin clouds and precipitation ice layers, frequently observed at low levels. Although the ceilometer does not have polarization capability, which would provide direct information on the cloud phase, the high backscatter coefficient of the liquid-containing layers together with the rapid extinction of the lidar signal makes it possible to distinguish the liquid-containing clouds as geometrically thin but highly reflective layers (Hogan et al., 2003b). Hogan et al. (2003b) and O'Connor et al. (2004) showed that mid-latitude clouds most likely contain liquid if their optical depth exceeds 0.7 and the peak value of β_a from a 905 nm ceilometer is greater than $10^{-4} \text{ sr}^{-1} \text{ m}^{-1}$. Here we exclude snowfall profiles using MRR measurements (Section 4.2.1) before applying the same threshold to ceilometer β_a to identify **mixed-phase liquid-containing** clouds.

20 *b) Infrared pyrometer*

The infrared radiation pyrometer (Heitronics KT15.82II) is a passive radiometer measuring the downward radiance within the 8-14 μm atmospheric high-transmittance spectral window (Table 3). Atmospheric transmittance ranges from 20% at the edges up to 80% within the spectral window in the standard atmosphere (and even higher in Antarctica), thus minimizing the absorption due to water vapor, carbon dioxide and ozone. The pyrometer is installed in a heated wooden box with continuous lens ventilation to prevent lens contamination and blockage due to the snow (Fig. 1).

For optically thick clouds the pyrometer temperature (T_{pyr} , °C) is determined by the infrared emission within the lowest part of the cloud. Though this is typically slightly colder than the temperature at cloud base, compensation by atmospheric emission below cloud base allows us to approximate T_{pyr} to the cloud base temperature. At the same time, for clouds residing within a temperature inversion, as frequently occurring in both polar regions (e.g., Mahesh et al., 2001a, b; Sedlar et al., 2012), the cloud emitting layer is shifted towards the cloud top, in which case T_{pyr} will exceed the cloud base temperature. Rathke et al. (2002) showed overall good correspondence between the effective cloud radiative temperatures obtained from the geometric and spectral methods versus the lidar/radiosonde values of cloud base temperatures for Arctic stratus clouds. Deviations were attributed mostly to cloud inhomogeneity, in particular variable cloud water content, and to presence of strong in-cloud temperature gradients. For optically thinner clouds, both the temperature profile and variable cloud optical thickness strongly influence cloud emitted radiances and therefore the observed T_{pyr} . Measurements in Antarctica show predominance of optically thin clouds (cloud optical depth < 1) over the Antarctic plateau (Mahesh et al., 2001b), and frequent optically thick clouds at the Antarctic coast (Ricchiazzi et al., 1995). Here, we use raw T_{pyr} measurements at 1-min temporal resolution without distinguishing between optically thin and thick clouds.

c) Precipitation radar

The radar (METEK MRR-2), is a frequency-modulated continuous-wave vertically profiling Doppler radar, transmitting at a 24 GHz frequency ($\lambda=1.24$ cm) by a 50 mW solid state transmitter and focused by a 60 cm offset parabolic antenna (Table 4, Fig. 1). The low power consumption of MRR makes it suitable for installation at PE and other remote regions. Antenna heating was not used at PE due to the inefficiency in the flushing down of the melted snow particles of rather small size and the risk of the antenna dish glaciation during the unmanned winter period. Instead, the MRR was installed such that to assure natural ventilation of the antenna dish, which proved to be efficient as snowfall at PE is almost always accompanied by strong winds. Occasional formation of a thin snow layer causes no disturbance to the measurements as attenuation by dry snow is very weak in the K-band (Matrosov, 2007).

Maahn and Kollias (2012) improved the MRR raw signal processing for solid precipitation, providing reliable values of radar effective reflectivity (Z_e , $\text{mm}^6 \text{m}^{-3}$, expressed also in $\text{dBz} = 10 \log_{10} Z_e$), mean Doppler velocity (m s^{-1}) and velocity spectral width (m s^{-1}), the latter characteristic of turbulence and variability of fall speed due to particle form and size. Useful reported precipitation profiles range from 400 m up to 3000 m agl with 100 m vertical resolution. Sensitivity down to $-8 \dots -3 \text{ dBz}$, depending on range, allows the MRR to detect rather weak precipitation-size particles, but is insensitive to small cloud particles. MRR sensitivity near the surface is close to the commonly used threshold of -10 dBz to identify precipitation from 35 GHz radar (Wang and Sassen, 2001). Photographs of the fallen snow crystals at PE in February 2010 and January 2011 revealed a maximum size of 0.5-0.8 mm, represented mostly by dendrites, columns, capped columns and rosettes. This is comparable to the snowfall particle shapes and sizes (from 0.03 up to 0.6 mm) measured at other Antarctic locations (Gay et al., 2002; Konishi et al., 1998; Lachlan-Cope et al., 2001; Walden et al., 2003). The total echo power is dominated by the largest particles according to Rayleigh scattering regime, although some of the larger falling snow particles might slightly deviate from pure Rayleigh scattering at MRR wavelength (Field et al., 2005; Kneifel et al., 2011). In addition to snowfall, MRR can also detect ice virga, defined as streaks of ice particles falling out of a cloud but evaporating before reaching the earth's surface as precipitation (AMS, 2014). Ice virga below mid-latitude altocumulus clouds is characterized by rather low number concentrations of ice crystals with particle sizes $\sim 0.15\text{-}0.25 \text{ mm}$ and radar Z_e ranging between -20 and 0 dBz (Wang et al., 2004; Westbrook and Illingworth, 2013). While MRR misses the most feeble precipitation (virga or snowfall) with $Z_e < -8 \text{ dBz}$, its sensitivity is sufficient to detect typical precipitation at the site.

In order to compare with snow accumulation on the ground, we use Z_e at 400 m agl to derive hourly mean snowfall rate (S , mm w.e. hour^{-1}). Variability in snow particle shapes, size distributions, densities, and fall velocities results in large uncertainty in $Z_e - S$ relationships. We calculate S range using nine relationships derived for dry (unrimed) snowfall and typical snow particle shapes for 34.6-35GHz radar frequency (Table 5). Six relationships were derived by Matrosov (2007) for aggregate snowflakes modeled as spheroids of variable aspect ratio, mass and fall velocity. Furthermore, Kulie and Bennartz (2009) derived $Z_e - S$ relationships for

a large ensemble of snow particle habits and PSDs to obtain global estimates of snowfall rate from satellite radar data. They selected three relations (for aggregates, three-bullet rosettes and low-density spherical snow particles), which they found to represent best the overall uncertainty range of their particle ensemble. All chosen relationships are representative of dry snowfall (i.e., snow particles are not significantly rimed or melted) and their scattering models of particle habits and sizes are very similar to observed particles at various Antarctic locations (Syowa and South Pole, Konishi et al., 1998; Walden et al., 2003). Thus, we assume that the expected S value lies within the predicted range. To reduce the uncertainty, measurements of snow particle shapes and sizes are required during each snowfall. The uncertainty of applying $Z_e - S$ relationships derived for 35 GHz radar to 24 GHz MRR is negligible for small snow particles typically occurring in Antarctica (Kneifel et al., 2011).

Snowfall rate (S , mm w.e. hour⁻¹) is calculated from hourly mean radar Z_e at 400 m agl. Conversion to S is typically done using $Z_e - S$ relationships in the form of $Z_e = aS^b$, where the coefficients a and b depend on various snowfall properties like snow particle habit, density, and snow size distribution and orientation during fall (Kulie and Bennartz, 2009; Kulie and Bennartz, 2007). We apply the relationships derived by Matrosov (2007) ranging from $Z_e = 34S^{1.1}$ to $Z_e = 67S^{1.2}$ depending on particle mass and shape (see Table 1 therein). These relationships derived for "dry snow" (snowfall typically occurring at air temperatures < -8 °C characterized by unrimed snowflakes containing negligible amounts of liquid water) are expected to be most suitable for Antarctica. They are also comparable to the relationships derived by Kulie and Bennartz (2009) for three-bullet rosette and low-density spherical snow particles (Table 1 therein). The uncertainty of applying $Z_e - S$ relationships derived for 35 GHz radar to 24 GHz MRR is negligible for small snow particles (Kneifel et al., 2011) typical in Antarctica. While naturally large uncertainty exists in the derived snowfall intensity due to the chosen $Z_e - S$ relationships, here we stress the importance of the relative, rather than absolute, snowfall amount values in their relationship to the daily snow accumulation changes.

4 Results

4.1 Case studies

4.1.1 Synoptic evolution

In order to demonstrate the complementary nature of HYDRANT measurements and their utility for detailed process studies, this section presents analyses of several cases representative for different cloud and precipitation types (**mixed-phase liquid-containing** clouds, ice clouds, ice virga, and precipitation to the surface) that occurred during the week of 6-13 February 2012. Using the European Centre for Medium-Range Weather Forecasts Interim re-analysis data (ERA-Interim) (Dee et al., 2011), local measurements are analysed in relationship to synoptic weather systems and their temporal evolution. Meteorological regime classification for each case follows the method of Gorodetskaya et al. (2013).

During the whole week of 6-13 February 2012, PE was under the influence of passing cyclones with three distinct cases characterized by various cloud and precipitation properties. Figure 2 shows the synoptic situation evolution and local weather at PE captured by the webcam (see also Supplementary Material for the movies produced using 1-sec webcam images). The beginning of the period (6-7 February) was associated with a wide low pressure system centred at 65°S, 20°W (east of the Weddell Sea), and was characterized by **mixed-phase** stratocumulus cloud appearance at PE (Fig 2a, case 1). On 10 February, the cyclone extended with its eastern flank reaching 30°E, while the center remained almost at the same position (68°S, 20°W). A high-pressure ridge blocking on the east was steering an intensive moisture flow into the DML resulting in two intensive snowfall events at PE (Fig 2b, case 2). The webcam images during this case show an overcast sky and reduced visibility. Finally, on 13 February 2012 the cyclone centre moved to 8°E (King Haakon VII Sea) bringing ice and **mixed-phase liquid-containing** clouds with virga and a weak snowfall to PE (Fig 2c, case 3). The webcam image around 1 UTC on this day shows an arrival of overcast conditions with the "night" sun visible in a small opening at the horizon (Fig 2c). We finish the process studies with a separate case on 8 April

2013 demonstrating a strong blowing snow event during cloud-free katabatic regime day (case 4).

4.1.2 Case 1: mixed-phase liquid-containing clouds

On 6-7 February 2012, persistent mixed-phase liquid-containing stratocumulus clouds were observed over PE for almost 30 hours with an important impact on radiative fluxes. Ceilometer measurements reveal a two-layer cloud structure (Fig. 3a): a thin highly reflective layer with $\beta_a > 10^{-4} \text{ sr}^{-1} \text{ m}^{-1}$, indicating the presence of liquid, occurred at 2-2.5 km height agl, with an intermittent ice layer below ($10^{-6.5} < \beta_a < 10^{-5} \text{ sr}^{-1} \text{ m}^{-1}$) extending down to 500 m agl. Such mixed-phase cloud structure consisting of a liquid-containing layer on top with an ice layer below is frequently observed in mid-latitudes and in the Arctic (Gayet et al., 2009; Shupe et al., 2006; Verlinde et al., 2007; Wang et al., 2004; Westbrook and Illingworth, 2013). The lower ice part of the cloud was not detected by MRR, indicating that the ice layer was characterized by small non-precipitating particles (Fig. 3a). The mixed-phase cloud had a strong effect on T_{pyr} , which was peaking at -30 to -20 °C during the cloud presence compared to -80°C during clear-sky periods (Fig. 3d). The highest T_{pyr} observed at around the same time (13 UTC) on both 6 and 7 February was associated with a liquid cloud layer, however on 6 February the liquid layer was located at lower elevation (1.8 km agl) compared to 2.6 km agl on 7 February. The extended layer of ice observed below the liquid layer on 7 February lead to occurred together with a substantial increase in T_{pyr} (Fig. 3d). ~~This variability in T_{pyr} depending on the mixed-phase cloud properties shows not only the importance of the liquid layer presence and its height, but also the potential of the ice present below the liquid layer to increase cloud LW radiative forcing.~~

A strong impact on surface radiative fluxes and consequently on surface and air temperature is one of the important characteristics of mixed-phase liquid-containing clouds over the Antarctic ice sheet. The increase in the surface incoming LW flux (LW_{in}) is tremendous: from 160 W m^{-2} during clear sky up to 240 W m^{-2} during the cloud presence. Changing cloud properties cause significant variability in the cloud radiative effect: the increase in elevation of the liquid-containing layer from 1.8 to 2.5 km agl lead to ~20% decrease in LW_{in} (Figs. 3a and

4a). LW_{in} was also increased ~~due to~~ during the presence of an extended ice layer below the liquid layer on 7 February. **Simultaneously enhanced ice production below a liquid layer and increased T_{pyr} and LW_{in} could be manifestations of increased cloud liquid water path.** Liquid-containing cloud strongly increasing LW_{in} and reducing net SW (up to 20 W m^{-2} difference at noon UTC) resulted in a rather smooth near-surface air temperature daily cycle mostly due to the warm cloudy nights (Fig. 4c).

4.1.3 Case 2: **ice/mixed-phase frontal clouds and intensive snowfall**

From 8 to 11 February 2012, ceilometer and MRR profiles (Figs. 3a-c) show cloud and precipitation properties typical of a warm frontal system passage resulting in the noon near-surface air temperature increase from $-10 \text{ }^\circ\text{C}$ before the storm up to $-5 \text{ }^\circ\text{C}$ afterwards (Fig. 4c). First, optically thin ice cirrus clouds appear near 6 km agl in the very end of 8 February followed by arrival of mid-level clouds (possibly altostratus) on 9 February decreasing in height and producing a virga and shortly after an intensive snowfall to the ground completely attenuating the ceilometer signal (Fig. 3a). MRR Z_e profiles show that precipitation extended at least up to 3 km agl (Figs. 3b and c). Despite the ceilometer signal attenuation by snowfall, it can be used to extend the MRR-derived precipitation profile starting at 400 m agl down to the surface (see ceilometer signal below the horizontal blue line near the surface in Fig. 3a). During the precipitation gap from 9 to 10 February, low level mixed-phase clouds became visible, followed by another intensive and deep snowfall in the afternoon of 10 February. On 11 February, the snowfall weakened, followed by low-level virga layers and a short period of low-level ice clouds (with upper boundaries below 2 km agl) ending in a clear sky afternoon.

The T_{pyr} shows high sensitivity to cloud and precipitation occurrence (however, during snowfall signal disturbances are expected) (Fig. 3d). Appearance of thin ice clouds above 3 km agl on 8 February preceding the storm results in T_{pyr} jump up to $-45 \text{ }^\circ\text{C}$ (Fig. 3d) with 20 W m^{-2} increase in LW_{in} (Fig. 4a). This shows the potential of the observatory to investigate the radiative importance of optically thin high-level cirrus clouds, despite the decrease of ceilometer sensitivity with height (Van Tricht et al., 2014).

The observed cloud and precipitation properties cause a large variability of LW_{in} with an increase up to 255 W m^{-2} during low-level cloudiness and precipitation, and an almost two-fold reduction in the net SW flux during the peak insolation hours (Fig. 4a). Periods of snowfall occurred together with intensified wind speeds and wind direction changing from southerly to easterly (Fig. 4b), which is characteristic for a synoptic weather regime at PE (Gorodetskaya et al., 2013). The increase of RH_i to 100% provides an additional indication of snow present in the boundary layer (Fig. 4c). The snowfall periods were determined based on the MRR Z_e observations at 400 m level agl exceeding -8 dBz : from noon to midnight of 9 February for the first and 11 UTC 10 February to 6 UTC 11 February for the second snowfall event. Significant snow accumulation (up to 30 mm w.e. during the first snowfall period and 40 mm w.e. during the second snowfall) was followed by snow removal resulting in zero total accumulation over the three-day period (Fig. 4d). Snow removal was associated with strong winds with hourly mean wind speed up to 12 m s^{-1} (Fig. 4b).

4.1.4 Case 3: ice/mixed-phase frontal clouds, virga and weak snowfall

The case on 12-14 February 2012 highlights the role of mixed-phase liquid-containing clouds in precipitation formation and radiative forcing. Similarly to case 2, ceilometer and MRR profiles (Figs. 3a-c) show cloud and precipitation properties typical for a warm frontal system passage: it starts with arrival of high level optically thin ice cirrus around noon of 12 February, causing an increase in T_{pyr} from $-80 \text{ }^\circ\text{C}$ to $-40 \text{ }^\circ\text{C}$. Further cloud properties are somewhat different from case 2: mid-level clouds with virga last longer, with decreasing cloud base height, thickening into a low-level nimbostratus cloud bringing weak snowfall. The Ns cloud was characterized by a geometrically thin and highly reflective layer (with $\beta_a > 10^{-4} \text{ sr}^{-1} \text{ m}^{-1}$) indicating the presence of liquid at 1.5 km agl causing an increase in T_{pyr} up to $-20 \text{ }^\circ\text{C}$ (Fig. 3d).

In the morning of 13 February, radar Z_e (Fig. 3b) shows higher vertical extent (at least up to 3 km) compared to the ceilometer β_a (Fig. 3a). The latter is attenuated by the optically and geometrically thick layer of ice virga with Z_e up to 15 dBz and Doppler velocities $< 1 \text{ m s}^{-1}$. This is in contrast to the relatively low Z_e of the snowfall in the afternoon ($< 5 \text{ dBz}$) and larger Doppler velocities (up to 2 m s^{-1}), indicating the presence of significantly fewer and some-

what larger particles (probably due to aggregation). Wind speed is decreasing from $> 10 \text{ m s}^{-1}$ down to negligible values in the afternoon (Fig. 4b), which could have assisted larger Doppler velocities favoring precipitation reaching the ground.

The hydrometeor layer after 18 UTC on 13 February contains precipitating ice crystals as indicated by the high radar Z_e and Doppler velocities of $\sim 1 \text{ m s}^{-1}$ (Figs. 3b and c). The high ceilometer β_a (Fig. 3a) could be caused either by the presence of liquid within this cloud or by specular reflection of horizontally oriented plate crystals (Hogan et al., 2003b; Thomas et al., 1990). The fact that T_{pyr} is decreasing (Fig. 3d) supports the hypothesis of the ice dominance in this cloud system, which likely resulted in reduced emissivity. At 22 UTC, high β_a within a geometrically thin layer and no significant MRR signal indicate the presence of a liquid-containing cloud replaced shortly afterwards with ascending mid-level ice layers (Fig. 3a). With the appearance of this short-lived thin highly reflective layer, T_{pyr} increases again to $-20 \text{ }^\circ\text{C}$, supporting the presence of liquid water with cloud emissivity probably approaching 1, and counteracting the effect of the 1-km increase in the cloud base height (Fig. 3a and d).

Changing cloud properties exhibit a strong influence on LW_{in} (as high as $240\text{-}260 \text{ W m}^{-2}$ during cloudy conditions, Fig. 4a). Near-surface air temperature is nearly constant at $-10 \text{ }^\circ\text{C}$ during the entire day (Fig. 4c). During the snowfall event at 16 UTC, easterly winds up to 10 m s^{-1} slow down and change to southerly direction (Fig. 4b). Such wind behaviour demonstrates a transition from a synoptic regime (a storm under cyclonic influence) to a katabatic regime (southerly flow from the Antarctic interior with rather quiet wind speeds due to the mountain sheltering, Gorodetskaya et al. (2013)). Small snow height variability throughout the day is associated with wind deposition/removal (in the absence of snowfall to the ground) and showing insignificant accumulation of snow after the snowfall event (Fig. 4d).

4.1.5 Case 4: cloud-free sky blowing snow

A special case on 8 April 2013 shows a strong blowing snow event occurring during cloudless conditions, which is a rare and extreme event at PE, where katabatic winds are usually rather weak being sheltered by the mountain range (Gorodetskaya et al., 2013; Thiery et al., 2012). The webcam movies during the daylight confirm clear sky conditions and show a strong drift-

ing/blowing snow event (see Supplementary Material). In order to capture the details of the event, raw ceilometer β_a profiles were investigated (Fig. 5a). The noise reduction and averaging used for cloud and precipitation recognition removes most of the clear-sky blowing snow layers and is not applied for this case. Figure 5a shows snow particle presence in the lowest 100 m in the beginning of the day with the blowing snow layer height increasing progressively during the day together with the increase in wind speeds (Fig. 5b). **The largest β_a values are observed near the surface diminishing with height until they reach low background magnitudes (molecular scattering).** The peak of the blowing snow layer height up to 500 m occurs at 21-22 UTC when the hourly mean wind speed measured by the AWS increases up to 21 m s^{-1} . Low LW_{in} values observed during this day (140 W m^{-2} , Fig. 5b) are representative of a cold katabatic regime with clear-sky conditions (Gorodetskaya et al., 2013). The observed wind speeds by and large exceed the threshold needed for lifting snow from the ground up to significant heights according to observational and modeling studies (on average $\sim 8 \text{ m s}^{-1}$, depending on snow properties) (Bintanja, 1998; Leonard et al., 2012).

The MRR detects no signal during this day, confirming that the blowing snow is limited to a shallow layer near the surface ($< 500 \text{ m agl}$), while precipitation is expected to originate from much higher layers (Fig. 3b). Thus, the ceilometer signal in the near-surface layers combined with low LW_{in} values, high near-surface wind speeds and absence of the MRR signal, can be used to distinguish blowing/drifted snow events from snow falling from a cloud. Here we show only one example; further analysis applied to longer time series and also to other ceilometer locations can produce valuable statistics on the clear-sky blowing snow heights. **Observations at South Pole using a micro-pulse lidar (Mahesh et al., 2003) showed an average blowing snow height of $\sim 400 \text{ m agl}$, with half of the cases up to 200 m and occasional events reaching $> 600 \text{ m}$ (based on 11 months of measurements including summer and winter months).** Using satellite-based lidar data, Palm et al. (2011) found an average depth of 120 m and a maximum of 1 km for all detected clear-sky blowing snow events over the entire Antarctic ice sheet.

4.2 Statistics of cloud and precipitation properties

4.2.1 Combining ceilometer and radar profiles

In addition to case studies, we provide a compilation of basic cloud and precipitation statistics derived from the remote-sensing instruments based on the available measurement periods during 2010-2013 (14 months of cloud measurements mainly in summer/autumn and 26 months of snowfall measurements including an entire year, see Table 1). First, ceilometer β_a profiles were processed to exclude noise and clear sky values using the PT algorithm described by Van Tricht et al. (2014). This allowed isolation of the profiles with cloud and/or precipitation at the original 15-sec temporal resolution. Further, β_a profiles were averaged over 1-min and collocated with MRR Z_e profiles. Finally, cloudy profiles with snowfall were identified using a condition $Z_e > -8$ dBz at 400 m agl continuously during 10 min. Cloudy profiles with liquid were detected using a threshold of $10^{-4} \text{ sr}^{-1} \text{ m}^{-1}$ applied to β_a profiles without snowfall. **Thus, we identify the liquid-containing cloud layers which are not associated with snowfall to the ground, including those producing virga precipitation not reaching the surface.**

Figure 6 shows the frequency by height for Z_e and β_a demonstrating the typical cloud and precipitation signal intensities observed at PE and their distribution with height. Precipitation intensity near the surface (400 m agl) is most frequent **within $-5 < Z_e < 10$ dBz (78% of snowfall values at this range)** narrowing upwards to $-2 < Z_e < 8$ dBz at 2500 m agl (Fig. 6a). The tendency towards higher minimum Z_e values with height can be related to the decrease of MRR sensitivity with height (Maahn and Kollias, 2012). Precipitation of 1 mm hr^{-1} is commonly used as a threshold between 'light' and 'moderate' precipitation intensities (Rasmussen et al., 1999). It corresponds to **13-25 dBz according to the ensemble of $Z_e - S$ relationships for dry snow (Table 5)**. Using the mean value ($Z_e = 17$ dBz) at 400 m agl as a threshold, PE is characterized overall by low intensity precipitation **(97% of total precipitation time)** with rare occasional moderate intensity snowfalls (3% of precipitation). Most of precipitation is confined within the first 2.5 km agl, while moderate intensity precipitation is limited to 2 km agl.

The frequency by height diagram for ceilometer β_a was first constructed for all cloudy and precipitation profiles (Fig. 6b). The decrease of frequency of occurrence with height for

the low β_a values can be related, as for the radar, to the decreasing sensitivity of ceilometer with height leading to a possible underestimation of high-level optically thin ice clouds (Van Tricht et al., 2014). The most frequently observed backscatter signal is found within $10^{-5.5} < \beta_a < 10^{-4.5} \text{ sr}^{-1} \text{ m}^{-1}$, observed from near the surface up to 3 km agl. The nearest to the surface layers (below 500 m agl) are characterized by rather high backscatter ($10^{-5} < \beta_a < 10^{-4} \text{ sr}^{-1} \text{ m}^{-1}$) and can be a signature of both clouds and precipitation to the ground. Excluding snowfall profiles from the analysis shows that these high β_a values near the surface are related to snowfall, which can entirely attenuate ceilometer signal near the surface (Fig. 6c). Cloudy profiles without snowfall show the highest frequency between 500 and 3 km agl (Fig. 6c). Low β_a values ($< 10^{-5} \text{ sr}^{-1} \text{ m}^{-1}$) dominate the layers below 1 km agl and are characteristic of ice layers extending down to the surface, which can be both cloud ice layers or light precipitation beyond the MRR sensitivity. Backscatter values larger than $10^{-4} \text{ sr}^{-1} \text{ m}^{-1}$, which we can more certainly relate now to the liquid-containing cloud layers, are confined within the height interval between 1 and 3 km agl. The near-surface layers below 1 km agl have a clear tendency towards low β_a values more representative of ice clouds and/or precipitation.

As shown by Van Tricht et al. (2014), 80% of all clouds and precipitation layers at PE have base heights below 2 km agl, while the majority (78%) of the optically thick liquid-containing cloud layers have their bases between 1 and 3 km agl. Combining these results with Fig. 6c points to a large vertical range of the ice layers, including both ice-only clouds and mixed phase clouds. As demonstrated by the case studies (section 4.1), mixed-phase clouds at PE with liquid-containing layers above 1 km can have ice layers extending close to the surface. At the same time, the ability of the ceilometer to detect the vertical extent of the liquid-containing clouds is limited due to the fast attenuation of ceilometer signal by the liquid-containing layers (e.g., Platt et al., 1994). In addition, the rapid ceilometer signal attenuation makes it unsuitable for detection of multiple liquid-containing layers.

4.2.2 Cloud and snowfall occurrence frequency

Using collocated 1-min β_a and Z_e values, we calculated hourly cloud occurrence frequency (COF), snowfall occurrence frequency (SOF) and liquid-containing cloud occurrence frequency

(LCOF) distributions. Hourly COF is a metric generally used to express cloud cover based on point measurements in time (e.g., Town et al., 2007). Here it is expressed as a unitless fraction (0-1) to distinguish from the COF distribution frequency given in % (similarly for SOF and LCOF, see Fig. 7). Cloudiness at PE is strongly bimodal with the majority of the time being either clear sky or overcast (Fig. 7). Overcast conditions for all types of clouds and precipitation were observed 35% of the measurement period. Due to the presence of partial cloudiness, mean COF including all clouds and precipitation for the entire measurement period is 0.46.

Further, the overcast conditions are divided among liquid-containing clouds (7% of the total measurement period or 20% of the overcast periods), snowfall (6% of the total period or 17% of the overcast), and ice clouds or weak precipitation not detected by MRR (22% of the total period or 63% of the overcast). Thus, while ice clouds occur most frequently, the liquid-containing **mixed-phase** clouds are also observed during a significant period of time. Low SOF, compared to cloudy periods, combined with precipitation intensity statistics (Fig. 6a), indicates once more the importance of occasional intensive snowfall events. It should be noted that SOF was estimated only for the periods when cloud data were available (summer-autumn months), thus excluding the winter snowfall measurements during 2012 (which are included in Fig. 6a). **The frequency of liquid-containing clouds at PE is lower than found at various Arctic locations (32-56%, Shupe, 2011), or at Greenland summit (from 10% in winter up to 40-60% during summer, Shupe et al., 2013; Van Tricht et al., 2014).**

4.2.3 Snowfall and accumulation

Further, we show the role of the snowfall-driven high accumulation events in the local surface mass budget. The PE site is characterized by high interannual variability in local snow accumulation (230, 23, 227, and 52 mm w.e. during 2009, 2010, 2011, and 2012, respectively), which is in accordance with high interannual variability in a much larger region: yearly total accumulation averaged over the 180-km long stake line from PE to the coast is 606, 157, and 598 mm w.e. for 2009, 2010, and 2011, respectively. This stake line was installed within GLACIOCLIM project (Agosta et al., 2012; Favier et al., 2013) and shows larger absolute values compared to PE as it includes coastal areas. The AWS measurements clearly show the anomalous accu-

5 mulation observed over entire DML in 2009 and 2011 (Boening et al., 2012; Lenaerts et al., 2013; Gorodetskaya et al., 2014). Net snow accumulation is determined by several processes, including precipitation, sublimation/deposition, removal and deposition of snow by wind, and melt (in the coastal areas of the ice sheet) (Van den Broeke et al., 2004). While precipitation is the major positive component of the surface mass budget, it is difficult to disentangle the contribution of precipitation from continuous wind-driven snow deposition and erosion. Here, we use radar-derived snowfall rates collocated with snow height changes from the AWS **sonic snow height ranger** in order to estimate the contribution of snowfall to the local snow accumulation and attempt to distinguish accumulation due to snowfall from accumulation due to the wind deposition.

10 We analyze in detail daily mean snow height changes and snowfall rates during two years 2011-2012, which are characterized by very different yearly snow accumulation (Fig. 8). Each year is punctuated by several occasional high accumulation events, defined as days with accumulation $> 10 \text{ mm w.e. day}^{-1}$, the 95th percentile based on 2009-2012 daily mean positive accumulation values (indicated with blue circles in Fig. 8). In total, 15 high accumulation events were found during this two-year period. While the two years did not differ much in terms of the amount of high accumulation events, the magnitude of accumulation per event was much higher during 2011.

20 Using radar measurements, we attributed all of these high-accumulation events to snowfall of various intensity (blue diamonds in Fig. 8). The three most intensive snowfalls, leading to the largest daily snow accumulation, occurred during 2011 (14-17 February, 16-17 December and 19-20 December), and were associated with exceptional moisture transport towards East Antarctica organized into so-called atmospheric rivers (Gorodetskaya et al., 2014). During the winter 2011, the attribution of exceptionally high accumulation events to measured snowfall rates was unfortunately not possible due to the radar measurements gap, however strong moisture fluxes into PE found using ERA-Interim data during these events indicate the potential contribution of snowfall. Daily accumulation values $> 10 \text{ mm w.e. day}^{-1}$ are significantly correlated with snowfall rates ($r=0.6$ at 99% significance level), while correlation is low for the entire time series. Despite the differences in snowfall intensity and uncertainties in $Z_e - S$ rela-

tionships, radar measurements allow to directly associate high snow accumulation events with snowfall. The occasional nature of snowfalls and associated step-wise snow height changes, necessitate fine temporal resolution measurements demonstrated both by MRR (averaged to 1-min) and an acoustic snow height ranger (1-hour).

At the same time, small and medium accumulation events could be both due to snowfall and wind-driven deposition (Fig. 8). Also, some intensive snowfall events result in zero net snow accumulation due to the snow removal by strong winds under cyclonic conditions. During the winter of 2012, for example, snowfall was observed rather frequently, resulting in no significant snow height changes (Fig. 8). **In the next subsection we discuss the importance of other SMB components in addition to snowfall in determining the net snow accumulation.**

4.2.4 Surface mass balance components

Snowfall measurements were available almost continuously during 2012 (Fig. 8), allowing to compare radar-derived snowfall rates to the other SMB components. At PE, snow height changes (SH) are measured by the AWS sonic height sensor and are determined by the following SMB components: snowfall (S), surface sublimation (SU_s), drifting-snow sublimation (SU_{ds}), and wind-driven erosion/deposition of the drifting snow (ER_{ds}). S is the principal positive SMB term and is derived from MRR Z_e measurements at 400 m agl. The total yearly S is calculated as the mean (with uncertainty expressed as one standard deviation) based on the Monte-Carlo simulation of a distribution of yearly S values using an equally-random selection of $Z_e - S$ relationship for each precipitation event from the entire ensemble (Table 5).

SU_s is obtained from the surface latent heat flux estimated using bulk flux-profile relationships (Van den Broeke et al., 2004), whereas SU_{ds} is calculated as the mean of two parameterisations, described by Bintanja (1998) and Déry and Yau (2001). Detailed description of SU_s and SU_{ds} estimates is given by Thiery et al. (2012). The uncertainty in SU_s is calculated based on the AWS instrument accuracy, while SU_{ds} uncertainty is determined by differences in the two parameterisations. ER_{ds} is calculated as a residual term: $ER_{ds} = S - SU_{ds} - SU_s - SH$.

Radar-derived snowfall rate summed over the year 2012 is 110 ± 10 mm w.e. year⁻¹. During this time, SU_s and SU_{ds} removed 15 ± 7 and 10 ± 2 mm w.e. year⁻¹, respectively, to-

gether representing 23% of precipitation input at the site. Given the measured SH of 52 ± 3 mm w.e. year⁻¹, we obtain ER_{ds} of 33 ± 10 mm w.e. year⁻¹, which corresponds to 30% of the precipitation input. This ER_{ds} value represents the total snow erosion by the wind over the year.

5 Figure 9 shows cumulative daily SMB components during 2012. Several extreme SH peaks can be attributed to intense snowfall events (e.g., beginning of May and July, end of September) with significant snow removal in-between the events (e.g., during May, July-September, October). A substantial fraction of this snow removal is due to SU_s and SU_{ds} components, which are relatively small on a daily basis (thus closely following the S curve with much stronger changes), but persistent throughout the year. Removal by SU_s also exhibits a seasonal cycle being larger during austral summer (November-February).

10 Removal by the wind (ER_{ds}) shows a greater impact compared to sublimation terms with much higher temporal variability. The negative values of SH during January-April (relative to 1 January 2012) can be explained by both high SU_s during summer months together with high ER_{ds} term, removing the snow accumulated during the previous year. Both S and ER_{ds} strongly contributed to the large SH peak in the beginning of February, followed by a significant snow removal by ER_{ds} and SU_s . Later during the year, ER_{ds} also contributed to snow accumulation during some snowfall events (for instance, in early May and end of September), while some days with large S show negligible or even slightly negative SH changes (for example, beginning and end of August). The latter phenomenon was illustrated by case 2 (section 4.1.3), when rather long and intense snowfall (Fig. 3b) accompanied by high wind speeds (Fig. 4b) resulted in zero net snow accumulation (Fig. 4d). Thus, our results highlight the important contribution of both snowfall and wind-driven erosion/deposition to the local SMB.

5 Conclusions and Outlook

25 In this paper we present a new cloud-precipitation-meteorological observatory established in the escarpment zone of eastern Dronning Maud Land, East Antarctica. Cloud and precipitation properties at high vertical and temporal resolution are derived from a set of ground-based remote

sensing instruments (910 nm ceilometer, 8 – 14 μm radiation pyrometer, and 24 GHz vertically profiling precipitation radar). These are combined with automatic weather station measurements of near-surface meteorology and radiative fluxes, as well as local snow height changes.

The paper demonstrates the value of this set of instruments via detailed case studies and presents basic cloud and precipitation properties based on the available measurement periods during 2010-2013. Case studies show the ability of the observatory to capture complex and constantly evolving cloud and precipitation properties, as well as to measure intensive wind-driven blowing snow events. In particular, we have demonstrated ~~that the observatory can be used~~ **the potential of the observatory to be used** for investigating the following relationships:

- * distinguish between ice clouds (including weak precipitation), virga (precipitation not reaching the surface), ~~mixed-phase liquid-containing~~ clouds, and snowfall;
- * study the effect of changing cloud base heights and temperatures on surface radiative fluxes;
- * assess the vertical extent and radiative forcing of thin ice clouds;
- * assure that radar-derived snowfall (limited to 400 m agl) is observed all the way to the surface;
- * identify intensive (>10 m agl) wind-driven blowing snow events during cloud-free conditions;
- * distinguish snow accumulation due to snowfall from wind-driven deposition;
- * **quantify the surface mass balance components and study their relation to meteorological conditions.**

Statistical analysis using ceilometer and MRR measurements during austral summer and autumn/beginning of winter 2010-2013 reveals cloud and precipitation properties, many of which are derived for the first time over the Antarctic ice sheet. Ice cloud layers and weak precipitation are most frequently found from near the surface up to 3-3.5 km agl, while the lowest observed liquid-containing cloud layers are confined to 1-3 km agl.

Clouds at PE show a clear bimodal distribution with either clear sky or overcast most of the time. While ice-only clouds (including virga) occur most frequently (63% of cloudy periods), ~~as~~

expected in the polar regions, mixed-phase liquid-containing clouds are also observed during a significant period of time (20% of all cloudy overcast cases). Snowfall rates derived from radar measurements show high frequency of low intensity precipitation with rare occasional moderate intensity snowfalls of $> 1 \text{ mm w.e. hr}^{-1}$ (observed 3% of the total precipitation period).

5 Another long-standing question, which can be addressed using the observatory data, is attribution of accumulation to snowfall in contrast to the wind-driven deposition. Despite the naturally large uncertainty in the derived snowfall intensity due to the large range of possible $Z_e - S$ relationships, as well as limitation to vertical profiling, MRR measurements give an opportunity to obtain high resolution estimates of snowfall rate and relate them to the snow accumulation on
10 the ground. High temporal resolution of radar measurements together with typically large-scale and occasional nature of synoptic-driven precipitation allows capture of all major precipitation events contributing to the local surface mass budget. Large local accumulation events ($> 10 \text{ mm w.e. day}^{-1}$), responsible for the majority of the total annual surface mass budget, are all attributed to occasional snowfall of various intensity (during the radar-measurements period). It
15 is extremely important to capture these few strong events and missing them can lead to a large underestimation of the total yearly snow accumulation.

In contrast to the large accumulation events, medium to low accumulation occur both due to snowfall and wind-driven deposition. Also not every snowfall results in significant snow accumulation, and wind erosion (together with sublimation) can entirely remove locally precipitated
20 snow mass. Combining radar-derived snowfall rates during year 2012 with sublimation estimates based on the AWS measurements, allowed us to isolate the wind-driven erosion term and compare it to other SMB components. Radar-derived snowfall rate summed over the year 2012 is $110 \pm 10 \text{ mm w.e. year}^{-1}$. Surface and drifting snow sublimation removed together 23% of the snowfall input during this year. Given the measured SH of $52 \text{ mm w.e. year}^{-1}$ for 2012,
25 we obtained that $33 \pm 10 \text{ mm w.e. year}^{-1}$ (30% of the snowfall input) was removed by wind-driven snow erosion. Attribution of accumulation to snowfall, which can be achieved using precipitation radar measurements, is important not only for understanding the hydrologic cycle processes and mechanisms behind surface mass budget, but also for paleoclimate record interpretation (Masson-Delmotte et al., 2008; Schlosser et al., 2010).

Application of the observatory extends beyond clouds and precipitation, and can be used to capture intensive wind-driven blowing snow events (in the absence of snowfall from clouds) up to several hundred meters above the ground, associated with strong near-surface winds. Measurements from the ceilometer installed at PE and also lidars and ceilometers found at other locations around Antarctica (e.g., Mahesh et al., 2003) can be used for evaluation of the satellite-derived large-scale blowing snow events (Palm et al., 2011).

The goal of the observatory is to evaluate clouds and precipitation simulated by climate models allowing both detailed look into processes and statistical comparisons. It can be also used in synergy with satellite cloud and precipitation data. Collocating profiles from ground-based and satellite lidars can offer better representation of the cloud vertical structure. Similarly, collocation of MRR precipitation measurements with satellite-based radar provides additional information on precipitation occurrence and properties close to the surface offering a solution to the disturbance of satellite radars due to ground-clutter (Maahn et al., 2014). ~~Even though the instrument setup is much less sophisticated compared to mid-latitude observational supersites (e.g., Atmospheric Radiation Measurement research facilities), the combination of basic lidar, radar and passive infrared instruments, together with meteorological and snow accumulation measurements, already allows a number of important cloud and precipitation properties to be derived, and could be easily installed at other Antarctic stations.~~ In general, the robust instrumentation operational at PE station (ceilometer, radar, infrared thermometer, weather station and snow height meter) represents a promising tool to improve insight in cloud and precipitation processes in Antarctica, and can be easily deployed at other Antarctic stations.

Acknowledgements. This project has been successful thanks to continuous support of many people, companies and institutions. We are grateful to the Belgian Federal Science Policy (BELSPO) for the financial support of the HYDRANT project (EA/01/04AB). We thank International Polar Foundation (IPF) and all staff at Princess Elisabeth base for providing the infrastructure, technical and logistical support, and particularly Erik Verhagen and Karel Moerman (IPF) for help with onsite instrument maintenance. Special thanks for continuous technical support of the KU Leuven engineers Jos Meersmans and Valentijn Tuts, and all companies who provided the remote-sensing instruments and technical support - Vaisala (Finland), Heitronics/MeraBenelux (Germany/Netherlands), Metek (Germany), and Mobotix (Germany). Many thanks to Johan Boon and Hilde Vandenhoeck (KU Leuven) for computer and website support. We

are grateful to Carleen Reijmer and Wim Boot (Institute for Marine and Atmospheric research Utrecht, The Netherlands) for the AWS technical support and raw data processing. We are grateful to Roland Meister (Institute for Snow and Avalanche Research - SLF, Switzerland) for providing the equipment and training for snow pit measurements. We thank the French Glacioclim-SAMBA project ([http://www-
5 lgge.ujf-grenoble.fr/ServiceObs/SiteWebAntarc/glacioclim-samba.php](http://www-5 lgge.ujf-grenoble.fr/ServiceObs/SiteWebAntarc/glacioclim-samba.php)), Christophe Genthon and Vincent Favier (Laboratoire de Glaciologie et Géophysique de l'Environnement, France) and IPF for providing stake-line snow measurements. We thank colleagues from the Regional Climate Studies group at KU Leuven for their support and feedback. IG was funded by the BELSPO grant EA/01/04AB; MM was supported by the project ADMIRARI II of the German Research Association (DFG) under research grant
10 number LO901/5-1; KVT was supported by the Belgian Research Foundation Flanders (FWO) PhD fellowship. The University of Cologne contributions were partly performed at the Hans-Ertel Centre for Weather Research - Climate Monitoring Branch funded by the Federal Ministry of Transport, Building and Urban Development (BMVBS) of Germany and supported by a PostDoc fellowship of the German Academic Exchange Service (DAAD).

15 References

- American Meteorological Society: Virga. Glossary of Meteorology., [Available online at <http://glossary.ametsoc.org/wiki/Virga>.], 2014.
- Agosta, C., Favier, V., Genthon, C., Gallée, H., Krinner, G., Lenaerts, J. T. M., and van den Broeke, M. R.: A 40-year accumulation dataset for Adelie Land, Antarctica and its application for model validation,
20 Climate Dynamics, 38, 75–86, doi:10.1007/s00382-011-1103-4, 2012.
- Arctowski, H.: Aperçu des resultats meteorologiques de l'hivernage antarctique de la "Belgica", Ann. Met. Observ. Roy. Belg. (Bruxelles), 267, [http://docs.lib.noaa.gov/rescue/IPY/ipy_004_pdf/
Qc9949a731904.pdf](http://docs.lib.noaa.gov/rescue/IPY/ipy_004_pdf/Qc9949a731904.pdf), 1904.
- Averianov, V. G.: Glyatsio-klimatologiya Antarktidy [Glacio-climatology of Antarctic], Gidrometeoizdat, Leningrad., 197p., 1990.
- Bennartz, R., Shupe, M. D., Turner, D. D., Walden, V. P., Steffen, K., Cox, C. J., Kulie, M. S., Miller, N. B., and Pettersen, C.: July 2012 Greenland melt extent enhanced by low-level liquid clouds, Nature, 496, 83–86, doi:10.1038/nature12002, 2013.
- Berque, J., Lubin, D., and Somerville, R. C. J.: Transect method for Antarctic cloud property retrieval using AVHRR data, Int. J. Remote Sens., 32, 2887–2903, 2011.
- 30

- Bintanja, R.: The contribution of snowdrift sublimation to the surface mass balance of Antarctica, *Ann. Glaciol.*, 27, 251–259, 1998.
- Bintanja, R. and Van den Broeke, M. R.: The influence of clouds on the radiation budget of ice and snow surfaces in Antarctica and Greenland in summer, *Int. J. Climatol.*, 16, 1281–1296, 1996.
- 5 Boening, C., Lebsock, M., Landerer, F., and G., S.: Snowfall-driven mass change on the East Antarctic ice sheet, *Geophys. Res. Lett.*, 39, doi:doi:10.1029/2012GL053316, 2012.
- Bromwich, D. H., Nicolas, J. P., Hines, K. M., Kay, J. E., Key, E. L., Lazzara, M. A., Lubin, D., McFarquhar, G. M., Gorodetskaya, I. V., Grosvenor, D. P., Lachlan-Cope, T., and Van Lipzig, N. P. M.: Tropospheric clouds in Antarctica, *Reviews of Geophysics*, 50, RG1004, doi:10.1029/2011RG000363, 10 2012.
- Bryazgin, N. N.: Atmosfernye osadki v Antarktide i ih mnogoletnyaa izmenchivost' [Atmospheric precipitation in Antarctica and its inter-annual variability] // *Meteorol. Issled. v Antarktike - Part I.*, P. 30–34, Leningrad: Gidrometeoizdat, 1990.
- Cesana, G., Kay, J. E., Chepfer, H., English, J. M., and de Boer, G.: Ubiquitous low-level liquid-containing Arctic clouds: New observations and climate model constraints from CALIPSO-GOCCP, *Geophysical Research Letters*, 39, L20 804, doi:10.1029/2012GL053385, 2012.
- 15 Colle, B. A., Stark, D., and Yuter, S. E.: Surface Microphysical Observations Within East Coast Winter Storms on Long Island, NY, *Monthly Weather Review*, 142, 3126–3146, doi:http://dx.doi.org/10.1175/MWR-D-14-00035.1, 2014.
- 20 Das, I., Bell, R. E., Scambos, T. A., Wolovick, M., Creyts, T. T., Studinger, M., Frearson, N., Nicolas, J. P., Lenaerts, J. T. M., and Van den Broeke, M. R.: Influence of persistent wind scour on the surface mass balance of Antarctica, *Nature Geoscience*, 6, 367–371, doi:10.1038/ngeo1766, 2013.
- Dee, D. P., Uppala, S. M., Simmons, A. J., Berrisford, P., Poli, P., Kobayashi, S., Andrae, U., Balmaseda, M. A., Balsamo, G., Bauer, P., Bechtold, P., Beljaars, A. C. M., van de Berg, L., Bidlot, J., Bormann, N., Delsol, C., Dragani, R., Fuentes, M., Geer, A. J., Haimberger, L., Healy, S. B., Hersbach, H., Hólm, E. V., Isaksen, I., Kållberg, P., Köhler, M., Matricardi, M., McNally, A. P., Monge-Sanz, B. M., Morcrette, J.-J., Park, B.-K., Peubey, C., de Rosnay, P., Tavolato, C., Thépaut, J.-N., and Vitart, F.: The ERA-Interim reanalysis: configuration and performance of the data assimilation system, *Quarterly Journal of the Royal Meteorological Society*, 137, 553–597, doi:10.1002/qj.828, 2011.
- 25 30 Del Guasta, M., Morandi, M., Stefanutti, L., Brechet, J., and Piquad, J.: One year of cloud lidar data from Dumont d'Urville (Antarctica): 1. General overview of geometrical and optical properties, *Journal of Geophysical Research*, 98, 18 575, doi:10.1029/93JD01476, 1993.

- Déry, S. J. and Yau, M. K.: Simulation of blowing snow in the Canadian Arctic using a double-moment model, *Boundary-Layer Meteorology*, 99, 297–316, doi:10.1023/A:1018965008049, 2001.
- Devasthale, A., Tjernström, M., Karlsson, K.-G., Thomas, M. A., Jones, C., Sedlar, J., and Omar, A. H.: The vertical distribution of thin features over the Arctic analysed from CALIPSO observations, *Tellus B*, 63, 77–85, doi:10.1111/j.1600-0889.2010.00516.x, <http://www.tellusb.net/index.php/tellusb/article/view/16189>, 2011.
- Favier, V., Agosta, C., Parouty, S., Durand, G., Delaygue, G., Gallée, H., Drouet, A. S., Trouvilliez, A., and Krinner, G.: An updated and quality controlled surface mass balance dataset for Antarctica, *Cryosphere*, 7, 583–597, doi:10.5194/tc-7-583-2013, 2013.
- Field, P. R., Hogan, R. J., Brown, P. R. A., Illingworth, A. J., Choullarton, T. W., and Cotton, R. J.: Parametrization of ice-particle size distributions for mid-latitude stratiform cloud, *Quarterly Journal of the Royal Meteorological Society*, 131, 1997–2017, doi:10.1256/qj.04.134, 2005.
- Frezzotti, M., Urbini, S., Proposito, M., Scarchilli, C., and Gandolfi, S.: Spatial and temporal variability of surface mass balance near Talos Dome, East Antarctica, *Journal of Geophysical Research*, 112, F02 032, doi:10.1029/2006JF000638, 2007.
- Frezzotti, M., Scarchilli, C., Becagli, S., Proposito, M., and Urbini, S.: A synthesis of the Antarctic surface mass balance during the last 800 yr, *The Cryosphere*, 7, 303–319, doi:10.5194/tc-7-303-2013, 2013.
- Gallée, H. and Gorodetskaya, I. V.: Validation of a limited area model over Dome C, Antarctic Plateau, during winter, *Climate Dynamics*, 34, 61–72, doi:10.1007/s00382-008-0499-y, 2008.
- Gallée, H., Guyomarch, G., and Brun, E.: Impact of snow drift on the antarctic ice sheet surface mass balance: possible sensitivity to snow-surface properties, *Bound.-Lay. Meteorol.*, 99, 1–19, 2001.
- Gallée, H., Peyaud, V., and Goodwin, I.: Simulation of the net snow accumulation along the Wilkes Land transect, Antarctica, with a regional climate model, *Annals of Glaciology*, 41, 17–22(6), doi:<http://dx.doi.org/10.3189/172756405781813230>, 2005.
- Gay, M., Fily, M., Genthon, C., Frezzotti, M., Oerter, H., and Winther, J.-G.: Snow grain-size measurements in Antarctica, doi:10.3189/172756502781831016, 2002.
- Gayet, J.-F., Mioche, G., Dörnbrack, A., Ehrlich, A., Lampert, A., and Wendisch, M.: Microphysical and optical properties of Arctic mixed-phase clouds – the 9 April 2007 case study, doi:10.5194/acpd-9-11333-2009, 2009.
- Girard, E. and Blanchet, J.-P.: Simulation of Arctic diamond dust, ice fog, and thin stratus using an explicit aerosol–cloud–radiation model, *Journal of the Atmospheric Sciences*, 58, 1199–1221, doi:10.1175/1520-0469(2001)058<1199:SOADDI>2.0.CO;2, 2001.

- Gorodetskaya, I. V., Van Lipzig, N. P. M., Van den Broeke, M. R., Mangold, A., Boot, W., and Reijmer, C. H.: Meteorological regimes and accumulation patterns at Utsteinen, Dronning Maud Land, East Antarctica: Analysis of two contrasting years, *Journal of Geophysical Research: Atmospheres*, 118, 1700–1715, doi:10.1002/jgrd.50177, 2013.
- 5 Gorodetskaya, I. V., Tsukernik, M., Claes, K., Ralph, M. F., Neff, W. D., and Lipzig, N. P. M. V.: The role of atmospheric rivers in anomalous snow accumulation in East Antarctica, *Geophysical Research Letters*, 41, 6199–6206, doi:10.1002/2014GL060881, 2014.
- Gregory, J. M. and Huybrechts, P.: Ice-sheet contributions to future sea-level change., *Philosophical transactions. Series A, Mathematical, physical, and engineering sciences*, 364, 1709–31, doi:10.1098/rsta.2006.1796, 2006.
- 10 Grenier, P., Blanchet, J. P., and Muñoz-Alpizar, R.: Study of polar thin ice clouds and aerosols seen by CloudSat and CALIPSO during midwinter 2007, *Journal of Geophysical Research D: Atmospheres*, 114, doi:10.1029/2008JD010927, 2009.
- Groot Zwaaftink, C. D., Cagnati, A., Crepez, A., Fierz, C., Macelloni, G., Valt, M., and Lehning, M.: Event-driven deposition of snow on the Antarctic Plateau: analyzing field measurements with SNOWPACK, *The Cryosphere*, 7, 333–347, doi:10.5194/tc-7-333-2013, 2013.
- Hahn, C. J. and Warren, S. G.: *Cloud Climatology for Land Stations Worldwide, 1971–1996.*, Tech. rep., NDP- 026D, Carbon Dioxide Information Analysis Center, Oak Ridge National Laboratory, Oak Ridge, TN., doi:10.3334/CDIAC/cli.ndp026d, 2003.
- 20 Henderson, D. S., L'Ecuyer, T., Stephens, G., Partain, P., and Sekiguchi, M.: A Multisensor Perspective on the Radiative Impacts of Clouds and Aerosols, *Journal of Applied Meteorology and Climatology*, 52, 853–871, doi:10.1175/JAMC-D-12-025.1, 2013.
- Hogan, R. J., Francis, P. N., Flentje, H., Illingworth, A. J., Quante, M., and Pelon, J.: Characteristics of mixed phase clouds. Part I: Lidar, radar and aircraft observations from CLARE '98, *Quart. J. Roy. Meteor. Soc.*, 129, 2089–2116., doi:10.1256/qj.01.208, 2003a.
- 25 Hogan, R. J., Illingworth, A. J., O'Connor, E. J., and Póiares Baptista, J. P. V.: Characteristics of mixed-phase clouds. II: A climatology from ground-based lidar, *Quarterly Journal of the Royal Meteorological Society*, 129, 2117–2134, doi:10.1256/qj.01.209, 2003b.
- IPCC: *Climate Change 2013: The Physical Science Basis. Contribution of Working Group I to the Fifth Assessment Report of the Intergovernmental Panel on Climate Change.*, <http://www.climatechange2013.org/>, 2013.
- 30

- Kneifel, S., Maahn, M., Peters, G., and Simmer, C.: Observation of snowfall with a low-power FM-CW K-band radar (Micro Rain Radar), *Meteorology and Atmospheric Physics*, 113, 75–87, doi:10.1007/s00703-011-0142-z, 2011.
- 5 Konishi, H., Wada, M., and Endoh, T.: Seasonal variations of cloud and precipitation at Syowa station, Antarctica, *Annals of Glaciology*, 27, 597–602, 1998.
- Krinner, G., Magand, O., Simmonds, I., Genthon, C., and Dufresne, J. L.: Simulated Antarctic precipitation and surface mass balance at the end of the twentieth and twenty-first centuries, *Climate Dynamics*, 28, 215–230, doi:10.1007/s00382-006-0177-x, 2007.
- 10 Kuipers Munneke, P., Reijmer, C. H., and van den Broeke, M. R.: Assessing the retrieval of cloud properties from radiation measurements over snow and ice, *International Journal of Climatology*, 31, 756–769, doi:10.1002/joc.2114, 2011.
- Kulie, M. S. and Bennartz, R.: Utilizing Spaceborne Radars to Retrieve Dry Snowfall, *Journal of Applied Meteorology and Climatology*, 48, 2564–2580, doi:10.1175/2009JAMC2193.1, 2009.
- Lachlan-Cope, T.: Antarctic clouds, *Polar Research*, 29, 150–158, doi:10.1111/j.1751-15
8369.2010.00148.x, 2010.
- Lachlan-Cope, T., Ladkin, R., Turner, J., and Davison, P.: Observations of cloud and precipitation particles on the Avery Plateau, Antarctic Peninsula, *Antarctic Science*, 13, 339–348, doi:http://dx.doi.org/10.1017/S0954102001000475, 2001.
- 20 Lampert, A., Ehrlich, A., Dörnbrack, A., Jourdan, O., Gayet, J.-F., Mioche, G., Shcherbakov, V., Ritter, C., and Wendisch, M.: Microphysical and radiative characterization of a subvisible midlevel Arctic ice cloud by airborne observations – a case study, *Atmospheric Chemistry and Physics*, 9, 2647–2661, doi:10.5194/acp-9-2647-2009, 2009.
- Lawson, P. R., Baker, B. A., Zmarzly, P., O’Connor, D., Qixu, M., Gayet, J.-F., and Shcherbakov, V.: Microphysical and Optical Properties of Atmospheric Ice Crystals at, *Journal of Applied Meteorology and Climatology*, 45, 1505–1524, 2006.
- 25 Lazzara, M. A., Keller, L. M., Stearns, C. R., Thom, J. E., and Weidner, G. A.: Antarctic Satellite Meteorology: Applications for Weather Forecasting, doi:10.1175/1520-0493(2003)131<0371:ASMAFW>2.0.CO;2, 2003.
- Lenaerts, J. T., Van Den Broeke, M. R., Scarchilli, C., and Agosta, C.: Impact of model resolution on simulated wind, drifting snow and surface mass balance in Terre Adélie, East Antarctica, *Journal of Glaciology*, 58, 821–829, doi:10.3189/2012JoG12J020, 2012a.
- 30 Lenaerts, J. T. M., van den Broeke, M. R., van de Berg, W. J., van Meijgaard, E., and Kuipers Munneke, P.: A new, high-resolution surface mass balance map of Antarctica (1979–2010)

- based on regional atmospheric climate modeling, *Geophysical Research Letters*, 39, L04 501, doi:10.1029/2011GL050713, 2012b.
- Lenaerts, J. T. M., van Meijgaard, E., van den Broeke, M. R., Ligtenberg, S. R. M., Horwath, M., and Isaksson, E.: Recent snowfall anomalies in Dronning Maud Land, East Antarctica, in a historical and future climate perspective, *Geophysical Research Letters*, 40, 2684–2688, doi:10.1002/grl.50559, <http://doi.wiley.com/10.1002/grl.50559>, 2013.
- Leonard, K. C., Tremblay, L. B., Thom, J. E., and MacAyeal, D. R.: Drifting snow threshold measurements near McMurdo station, Antarctica: A sensor comparison study, *Cold Regions Science and Technology*, 70, 71–80, doi:10.1016/j.coldregions.2011.08.001, 2012.
- Ligtenberg, S. R. M., van de Berg, W. J., van den Broeke, M. R., Rae, J. G. L., and van Meijgaard, E.: Future surface mass balance of the Antarctic ice sheet and its influence on sea level change, simulated by a regional atmospheric climate model, *Climate Dynamics*, 41, 867–884, doi:10.1007/s00382-013-1749-1, 2013.
- Liston, G. E., Bruland, O., Winther, J.-G., Elvehø, H., and Knut, S.: Meltwater production in Antarctic blue-ice areas: sensitivity to changes in atmospheric forcing, *Polar Research*, 18, 283–290, doi:10.1111/j.1751-8369.1999.tb00305.x, 1999.
- Löhnert, U., Kneifel, S., Battaglia, A., Hagen, M., Hirsch, L., and Crewell, S.: A Multisensor Approach Toward a Better Understanding of Snowfall Microphysics: The TOSCA Project, *Bulletin of the American Meteorological Society*, 92, 613–628, doi:10.1175/2010BAMS2909.1, <http://journals.ametsoc.org/doi/abs/10.1175/2010BAMS2909.1>, 2011.
- Maahn, M. and Kollias, P.: Improved Micro Rain Radar snow measurements using Doppler spectra post-processing, *Atmospheric Measurement Techniques*, 5, 2661–2673, doi:10.5194/amt-5-2661-2012, 2012.
- Maahn, M., Burgard, C., Crewell, S., Gorodetskaya, I. V., Kneifel, S., Lhermitte, S., Van Tricht, K., and van Lipzig, N. P. M.: How does the space-borne radar blind-zone affect derived surface snowfall statistics in polar regions?, *Journal of Geophysical Research: Atmospheres*, Accepted, doi:10.1002/2014JD022079, 2014.
- Mahesh, A., Walden, V. P., and Warren, S. G.: Ground-Based Infrared Remote Sensing of Cloud Properties over the Antarctic Plateau . Part I : Cloud-Base Heights, *Journal of Applied Meteorology*, 40, 1265–1278, 2001a.
- Mahesh, A., Walden, V. P., and Warren, S. G.: Ground-Based Infrared Remote Sensing of Cloud Properties over the Antarctic Plateau. Part II: Cloud Optical Depths and Particle Sizes, *Journal of Applied Meteorology*, 40, 1279–1294, 2001b.

- Mahesh, A., Eager, R., Campbell, J. R., and Spinhirne, J. D.: Observations of blowing snow at the South Pole, *Journal of Geophysical Research*, 108, 4707, doi:10.1029/2002JD003327, <http://doi.wiley.com/10.1029/2002JD003327>, 2003.
- 5 Mahesh, A., Campbell, J. R., and Spinhirne, J. D.: Multi-year measurements of cloud base heights at South Pole by lidar, *Geophysical Research Letters*, 32, L09 812, doi:10.1029/2004GL021983, <http://doi.wiley.com/10.1029/2004GL021983>, 2005.
- Marchand, R., Mace, G. G., Ackerman, T., and Stephens, G.: Hydrometeor Detection Using Cloudsat —An Earth-Orbiting 94-GHz Cloud Radar, *Journal of Atmospheric and Oceanic Technology*, 25, 519–533, doi:10.1175/2007JTECHA1006.1, 2008.
- 10 Masson-Delmotte, V., Hou, S., Ekaykin, A., Jouzel, J., Aristarain, A., Bernardo, R. T., Bromwich, D., Cattani, O., Delmotte, M., Falourd, S., Frezzotti, M., Gallée, H., Genoni, L., Isaksson, E., Landais, A., Helsen, M. M., Hoffmann, G., Lopez, J., Morgan, V., Motoyama, H., Noone, D., Oerter, H., Petit, J. R., Royer, A., Uemura, R., Schmidt, G. a., Schlosser, E., Simões, J. C., Steig, E. J., Stenni, B., Stievenard, M., van den Broeke, M. R., van de Wal, R. S. W., van de Berg, W. J., Vimeux, F., and White, J. W. C.: A
- 15 Review of Antarctic Surface Snow Isotopic Composition: Observations, Atmospheric Circulation, and Isotopic Modeling, *Journal of Climate*, 21, 3359–3387, doi:10.1175/2007JCLI2139.1, <http://journals.ametsoc.org/doi/abs/10.1175/2007JCLI2139.1>, 2008.
- Matrosov, S. Y.: Modeling Backscatter Properties of Snowfall at Millimeter Wavelengths, *Journal of the Atmospheric Sciences*, 64, 1727–1736, doi:10.1175/JAS3904.1, 2007.
- 20 Mohn, H.: Roald Amundsen’s Antarctic expedition scientific results. *Meteorology. (Videnskapsselskapets Skrifter. I. Mat.-Naturv. Klasse 1915. No. 5)*, Tech. rep., Kristiania, I. Kommission Hos Jacob Dybwad., <http://scholar.google.com/scholar?hl=en&btnG=Search&q=intitle:7+2008#8>, 1915.
- Morley, B. M., Uthe, E. E., and Viezee, W.: Airborne lidar observations of clouds in the Antarctic troposphere, *Geophysical Research Letters*, 16, 491–494, doi:10.1029/GL016i006p00491, 1989.
- 25 Morrison, H. and Pinto, J. O.: Mesoscale modeling of springtime Arctic mixed-phase stratiform clouds using a new two-moment bulk microphysics scheme, *Journal of the Atmospheric Sciences*, 62, 3683–3704, doi:10.1175/JAS3564.1, 2005.
- Münkel, C., Eresmaa, N., Räsänen, J., and Karppinen, A.: Retrieval of mixing height and dust concentration with lidar ceilometer, *Boundary-Layer Meteorology*, 124, 117–128, doi:10.1007/s10546-006-9103-3, 2006.
- 30 Nott, G. J. and Duck, T. J.: Lidar studies of the polar troposphere, *Meteorological Applications*, 18, 383–405, doi:10.1002/met.289, 2011.

O'Connor, E., Illingworth, A., and Hogan, R.: A Technique for Autocalibration of Cloud Lidar, *Journal of Atmospheric & Oceanic Technology*, 21, 777–786, doi:[http://dx.doi.org/10.1175/1520-0426\(2004\)021<0777:ATFAOC>2.0.CO;2](http://dx.doi.org/10.1175/1520-0426(2004)021<0777:ATFAOC>2.0.CO;2), 2004.

5 Pal, S. R., Steinbrecht, W., and Carswell, A. I.: Automated method for lidar determination of cloud-base height and vertical extent, *Applied optics*, 31, 1488–94, doi:[10.1364/AO.31.001488](https://doi.org/10.1364/AO.31.001488), 1992.

Palerme, C., Kay, J. E., Genthon, C., L'Ecuyer, T., Wood, N. B., and Claud, C.: How much snow falls on the Antarctic ice sheet?, *The Cryosphere*, 8, 1577–1587, doi:[10.5194/tc-8-1577-2014](https://doi.org/10.5194/tc-8-1577-2014), <http://www.the-cryosphere.net/8/1577/2014/>, 2014.

10 Palm, S. P., Yang, Y., Spinhirne, J. D., and Marshak, A.: Satellite remote sensing of blowing snow properties over Antarctica, *Journal of Geophysical Research*, 116, D16 123, doi:[10.1029/2011JD015828](https://doi.org/10.1029/2011JD015828), <http://doi.wiley.com/10.1029/2011JD015828>, 2011.

Pattyn, F., Matsuoka, K., and Berte, J.: Glacio-meteorological conditions in the vicinity of the Belgian Princess Elisabeth Station, Antarctica, *Antarctic Science*, 22, 79, doi:[10.1017/S095410200990344](https://doi.org/10.1017/S095410200990344), 2009.

15 Platt, C. M., Young, S. A., Carswell, A. I., Pal, S. R., McCormick, M. P., Winker, D. M., Del-Guasta, M., Stefanutti, L., Eberhard, W. L., Hardesty, M., Flamant, P. H., Valentin, R., Forgan, B., Gimmetstad, G. G., Jäger, H., Khmelevtsov, S. S., Kolev, I., Kaprieolev, B., Lu, D.-r., Sassen, K., Shamanaev, V. S., Uchino, O., Mizuno, Y., Wandinger, U., Weitkamp, C., Ansmann, A., and Wooldridge, C.: The Experimental Cloud Lidar Pilot Study (ECLIPS) for Cloud—Radiation
20 Research, *Bulletin of the American Meteorological Society*, 75, 1635–1654, doi:[10.1175/1520-0477\(1994\)075<1635:TECLPS>2.0.CO;2](https://doi.org/10.1175/1520-0477(1994)075<1635:TECLPS>2.0.CO;2), 1994.

Rasmussen, R. M., Vivekanandan, J., Cole, J., Myers, B., and Masters, C.: The Estimation of Snowfall Rate Using Visibility, *Journal of Applied Meteorology*, 38, 1542–1563, doi:[10.1175/1520-0450\(1999\)038<1542:TEOSRU>2.0.CO;2](https://doi.org/10.1175/1520-0450(1999)038<1542:TEOSRU>2.0.CO;2), 1999.

25 Rathke, C., Neshyba, S., Shupe, M., Rowe, P., and Rivers, A.: Radiative and microphysical properties of Arctic stratus clouds from multiangle downwelling infrared radiances, *Journal of Geophysical Research*, 107, 4703, doi:[10.1029/2001JD001545](https://doi.org/10.1029/2001JD001545), <http://doi.wiley.com/10.1029/2001JD001545>, 2002.

Ricchiazzi, P., Gautier, C., and Lubin, D.: Cloud scattering optical depth and local surface albedo in the Antarctic : Simultaneous retrieval using ground-based radiometry, *Journal of Geophysical Research*,
30 100, 21 091–21 104, 1995.

Rignot, E., Velicogna, I., van den Broeke, M. R., Monaghan, A., and Lenaerts, J. T. M.: Acceleration of the contribution of the Greenland and Antarctic ice sheets to sea level rise, *Geophysical Research Letters*, 38, L05 503, doi:[10.1029/2011GL046583](https://doi.org/10.1029/2011GL046583), 2011.

- Rusin, N. P.: Meteorological and Radiation Regime of Antarctica (Meteorologicheski i Radiatsionnyi Rezhim Antarktity), Gidrometeoizdat, Leningrad., 446p., <http://books.google.be/books?id=sr8JAQAAIAAJ>, 1964.
- Schlosser, E., Manning, K. W., Powers, J. G., Duda, M. G., Birnbaum, G., and Fujita, K.: Characteristics of high-precipitation events in Dronning Maud Land, Antarctica, *Journal of Geophysical Research*, 115, D14 107, doi:10.1029/2009JD013410, <http://doi.wiley.com/10.1029/2009JD013410>, 2010.
- Sedlar, J., Shupe, M. D., and Tjernström, M.: On the Relationship between Thermodynamic Structure and Cloud Top, and Its Climate Significance in the Arctic, *Journal of Climate*, 25, 2374–2393, doi:10.1175/JCLI-D-11-00186.1, <http://journals.ametsoc.org/doi/abs/10.1175/JCLI-D-11-00186.1>, 2012.
- Shiobara, M., Yabuki, M., and Kobayashi, H.: A polar cloud analysis based on Micro-pulse Lidar measurements at Ny-Alesund, Svalbard and Syowa, Antarctica, *Physics and Chemistry of the Earth, Parts A/B/C*, 28, 1205–1212, doi:10.1016/j.pce.2003.08.057, <http://linkinghub.elsevier.com/retrieve/pii/S1474706503002006>, 2003.
- Shupe, M. D.: Clouds at Arctic Atmospheric Observatories. Part II: Thermodynamic Phase Characteristics, *Journal of Applied Meteorology and Climatology*, 50, 645–661, doi:10.1175/2010JAMC2468.1, <http://journals.ametsoc.org/doi/abs/10.1175/2010JAMC2468.1>, 2011.
- Shupe, M. D. and Intrieri, J. M.: Cloud radiative forcing of the Arctic surface: The influence of cloud properties, surface albedo, and solar zenith angle, *Journal of Climate*, 17, 616–628, doi:10.1175/1520-0442(2004)017<0616:CRFOTA>2.0.CO;2, 2004.
- Shupe, M. D., Matrosov, S. Y., and Uttal, T.: Mixed-phase cloud properties derived from surface-based sensors at SHEBA, *J. Atmos. Sci.*, 63, 697–711, doi:http://dx.doi.org/10.1175/JAS3659.1, 2006.
- Shupe, M. D., Walden, V. P., Eloranta, E., Uttal, T., Campbell, J. R., Starkweather, S. M., and Shiobara, M.: Clouds at Arctic Atmospheric Observatories. Part I: Occurrence and Macrophysical Properties, *Journal of Applied Meteorology and Climatology*, 50, 626–644, doi:10.1175/2010JAMC2467.1, <http://journals.ametsoc.org/doi/abs/10.1175/2010JAMC2467.1>, 2011.
- Shupe, M. D., Turner, D. D., Walden, V. P., Bennartz, R., Cadeddu, M. P., Castellani, B. B., Cox, C. J., Hudak, D. R., Kulie, M. S., Miller, N. B., Neely, R. R., Neff, W. D., and Rowe, P. M.: High and Dry: New Observations of Tropospheric and Cloud Properties above the Greenland Ice Sheet, *Bulletin of the American Meteorological Society*, 94, 169–186, doi:10.1175/BAMS-D-11-00249.1, <http://journals.ametsoc.org/doi/abs/10.1175/BAMS-D-11-00249.1>, 2013.
- Stephens, G. L., Vane, D. G., Boain, R. J., Mace, G. G., Sassen, K., Wang, Z., Illingworth, A. J., O'Connor, E. J., Rossow, W. B., Durden, S. L., Miller, S. D., Austin, R. T., Benedetti, A., Mitrescu,

- C., and CloudSat Science Team, T.: The CloudSat Mission and the A-Trains, *Bulletin of the American Meteorological Society*, 83, 1771–1790, doi:10.1175/BAMS-83-12-1771, 2002.
- Sun, Z. and Shine, K. P.: Studies of the radiative properties of ice and mixed-phase clouds, *Quarterly Journal of the Royal Meteorological Society*, 120, 111–137, doi:10.1002/qj.49712051508, 1994.
- 5 Thiery, W., Gorodetskaya, I. V., Bintanja, R., Van Lipzig, N. P. M., Van den Broeke, M. R., Reijmer, C. H., and Kuipers Munneke, P.: Surface and snowdrift sublimation at Princess Elisabeth station, East Antarctica, *The Cryosphere*, 6, 841–857, doi:10.5194/tc-6-841-2012, 2012.
- Thomas, L., Cartwright, J. C., and Wareing, D. P.: Lidar observations of the horizontal orientation of ice crystals in cirrus clouds, *Tellus*, 42, 211–216, 1990.
- 10 Town, M. S., Walden, V. P., and Warren, S. G.: Cloud Cover over the South Pole from Visual Observations, Satellite Retrievals, and Surface-Based Infrared Radiation Measurements, *Journal of Climate*, 20, 544–559, doi:10.1175/JCLI4005.1, 2007.
- Turner, D. D., Vogelmann, A. M., Johnson, K., Miller, M., Austin, R. T., Barnard, J. C., Flynn, C., Long, C., McFarlane, S. A., Cady-Pereira, K., Clough, S. A., Chiu, J. C., Khaiyer, M. M., Liljegren, J., Lin, B., Minnis, P., Marshak, A., Matrosov, S. Y., Min, Q., O’Hirok, W., Wang, Z., and Wiscombe, W.: Thin Liquid Water Clouds: Their Importance and Our Challenge, *Bulletin of the American Meteorological Society*, 88, 177–190, doi:10.1175/BAMS-88-2-177, 2007.
- 15 Turner, J. and Pendlebury, S., eds.: The international Antarctic Weather Forecasting Handbook, British Antarctic Survey, Cambridge, UK, <http://medcontent.metapress.com/index/A65RM03P4874243N.pdf>, 2004.
- 20 Uotila, P., Lynch, A. H., Cassano, J. J., and Cullather, R. I.: Changes in Antarctic net precipitation in the 21st century based on Intergovernmental Panel on Climate Change (IPCC) model scenarios, *Journal of Geophysical Research*, 112, D10 107, doi:10.1029/2006JD007482, 2007.
- Van den Broeke, M., As, D. V., Reijmer, C. H., and de Wal, R. S. V. V.: Surface radiation balance in Antarctica as measured with automatic weather stations, *Journal of Geophysical Research*, 109, D09 103, doi:10.1029/2003JD004394, <http://doi.wiley.com/10.1029/2003JD004394>, 2004.
- 25 Van den Broeke, M., Reijmer, C., Van As, D., and Boot, W.: Daily cycle of the surface energy balance in Antarctica and the influence of clouds, *International Journal of Climatology*, 26, 1587–1605, doi:10.1002/joc.1323, 2006.
- 30 Van den Broeke, M. R., Reijmer, C. H., and Wal, R. S. W. V. A. N. D. E.: A study of the surface mass balance in Dronning Maud Land , Antarctica , using automatic weather station S, *Journal of Glaciology*, 50, 565–582, 2004.

- Van den Broeke, M. R., Bamber, J., Lenaerts, J., and Rignot, E.: Ice Sheets and Sea Level: Thinking Outside the Box, *Surveys in Geophysics*, 32, 495–505, doi:10.1007/s10712-011-9137-z, 2011.
- Van Tricht, K., Gorodetskaya, I. V., Lhermitte, S., Turner, D. D., Schween, J. H., and Van Lipzig, N. P. M.: An improved algorithm for polar cloud-base detection by ceilometer over the ice sheets, *Atmospheric Measurement Techniques*, 7, 1153–1167, doi:10.5194/amt-7-1153-2014, 2014.
- Verlinde, J., Harrington, J. Y., Yannuzzi, V. T., Avramov, A., Greenberg, S., Richardson, S. J., Bahrmann, C. P., McFarquhar, G. M., Zhang, G., Johnson, N., Poellot, M. R., Mather, J. H., Turner, D. D., Eloranta, E. W., Tobin, D. C., Holz, R., Zak, B. D., Ivey, M. D., Prenni, A. J., DeMott, P. J., Daniel, J. S., Kok, G. L., Sassen, K., Spangenberg, D., Minnis, P., Tooman, T. P., Shupe, M., Heymsfield, A. J., and Schofield, R.: The Mixed-Phase Arctic Cloud Experiment, *Bulletin of the American Meteorological Society*, 88, 205–221, doi:10.1175/BAMS-88-2-205, <http://journals.ametsoc.org/doi/abs/10.1175/BAMS-88-2-205>, 2007.
- Vihma, T., Mattila, O.-P., Pirazzini, R., and Johansson, M. M.: Spatial and temporal variability in summer snow pack in Dronning Maud Land, Antarctica, *The Cryosphere*, 5, 187–201, doi:10.5194/tc-5-187-2011, 2011.
- Wacker, U., Ries, H., and Schättler, U.: Precipitation simulation for Dronning Maud Land using the COSMO Model, *Antarctic Science*, 21, 643, doi:10.1017/S0954102009990149, 2009.
- Walden, V. P., Warren, S. G., and Tuttle, E.: Atmospheric Ice Crystals over the Antarctic Plateau in Winter, *Journal of Applied Meteorology*, 42, 1391–1405, doi:10.1175/1520-0450(2003)042<1391:AICOTA>2.0.CO;2, 2003.
- Walden, V. P., Ellison, M. E., Brandt, R. E., Town, M. S., Hudson, S. R., and Jones, R. M.: Properties of Super-cooled water clouds over South Pole, in: *Proc. 8th Conf. Polar Meteorology and Oceanography*, San Diego, CA, American Meteorological Society, 2005.
- Wang, Z. and Sassen, K.: Cloud Type and Macrophysical Property Retrieval Using Multiple Remote Sensors, *Journal of Applied Meteorology*, 40, 1665–1682, doi:10.1175/1520-0450(2001)040<1665:CTAMPR>2.0.CO;2, 2001.
- Wang, Z., Sassen, K., Whiteman, D. N., and Demoz, B. B.: Studying Altocumulus with Ice Virga Using Ground-Based Active and Passive Remote Sensors, *Journal of Applied Meteorology*, 43, 449–460, doi:10.1175/1520-0450(2004)043<0449:SAWIVU>2.0.CO;2, 2004.
- Westbrook, C. D. and Illingworth, A. J.: The formation of ice in a long-lived supercooled layer cloud, *Quarterly Journal of the Royal Meteorological Society*, 139, 2209–2221, doi:10.1002/qj.2096, 2013.
- Winker, D. M., Pelon, J., Coakley, J. A., Ackerman, S. A., Charlson, R. J., Colarco, P. R., Flamant, P., Fu, Q., Hoff, R. M., Kittaka, C., Kubar, T. L., Le Treut, H., McCormick, M. P., Mégie, G., Poole,

L., Powell, K., Trepte, C., Vaughan, M. A., and Wielicki, B. A.: The CALIPSO Mission: A Global 3D View of Aerosols and Clouds, *Bulletin of the American Meteorological Society*, 91, 1211–1229, doi:10.1175/2010BAMS3009.1, 2010.

Table 1. Overview of the HYDRANT instruments: raw measured data, derived parameters, location and continuous measurement periods used for analysis (with data gaps < 3 days) until 31 December 2013.

Instrument	Raw data	Derived parameters	Location&measurement period
Ceilometer	Attenuated backscatter vertical profiles ($\text{sr}^{-1} \text{m}^{-1}$)	Cloud base height and vertical extent; cloud phase, optical depth	PE base roof; 1/2-30/3/2010; 13/1-10/4/2011; 14/12/2011-12/3/2012; 1/1-16/05/2013;3-31/12/2013.
Infrared radiation pyrometer	Atmospheric brightness temperature ($^{\circ}\text{C}$)	Effective cloud base temperature	PE base roof; 15/2-24/2/2010;13/1-10/4/2011; 1/1/2011-12/3/2012; 1/1-16/05/2013;8-31/12/2013.
Micro Rain Radar	Spectral signal power (mW) per range	Effective reflectivity, spectral width, mean Doppler velocity	PE base roof; 18/01-31/3/2010; 10/12/2010-10/04/2011; 4/12/2011-16/5/2013; 4-31/12/2013.
Automatic Weather Station	Near sfc air temperature, RH,pressure,wind speed/dir, SW and LW fluxes, height above snow, snow temperature profile	RH wrt ice, specific humidity, surface albedo, surface temperature, snow accumulation	300 m east of PE base; 2/2-21/11/2009; 12/1-19/10/2010; 9/12/2010-31/12/2013.
Webcam Mobotix M24	Jpeg images at 1-min time res; 70k res.	Weather and instrument monitoring	PE base roof; 29/1-10/4/2011; 14/12/2011-12/3/2012; 1/1-16/05/2013;3/12-31/12/2013.
Snow pit equipment	1-m profile of snow density&temperature, crystal size/shapes	Snow density profile, snow metamorphism	Within 1 km east of AWS; once a year (Dec/Jan)

Table 2. Specifications of the HYDRANT ceilometer.

Instrument	Vaisala CL31 ceilometer
Center wavelength	910±10 nm at 25 °C
Operating mode	Pulsed, energy per pulse = 1.2±20% µJ
Pulse repetition rate	10.0 kHz
Average emitted power	12 mW
Beam divergence	±0.4 mrad edge, ±0.7 mrad diagonal
Field of view divergence	±0.83 mrad
Measurement resolution	10 m (selectable from 10 m or 5 m)
Measurement range	10 ... 7700 m
Reporting interval	15 s (selectable from 2 ... 120 s)
Measurement interval	2 s default (3 s in high-resolution mode)
Environment conditions	-40 °C ... +60 °C, to 100% RH, up to 50 m s ⁻¹ wind speed
Minimum recorded beta	10 ⁻⁸ sr ⁻¹ m ⁻¹
Protection/shielding	Optical unit is installed inside a white protective shield with automatic lens ventilation (with heating) and internal heating

Table 3. Specifications of the HYDRANT infrared pyrometer.

Instrument	Heitronics KT15.82 II Infrared Radiation Pyrometer
Spectral response	8-14 μm
Lens	K6, detector type A, material Ge
Temperature measuring range	-100 to 50 $^{\circ}\text{C}$
Temperature resolution	0.15 $^{\circ}\text{C}$ at T -25 $^{\circ}\text{C}$
(emissivity 1, response time 1 s)	0.05 $^{\circ}\text{C}$ at T +20 $^{\circ}\text{C}$
Accuracy (uncertainty)	± 0.5 $^{\circ}\text{C}$ + 0.7% of the difference between target and ambient temperature
Optical field of view (f-120 mm)	18 mm at 1 mm distance from lens 300 mm at 8 m distance from lens
Sample rate	5 Hz
Operational temperature range	-20 to 60 $^{\circ}\text{C}$
Protection/shielding	Wooden protective housing with inside temperature at +15 $^{\circ}\text{C}$ and continuous lens ventilation

Table 4. Specifications of the HYDRANT Micro Rain Radar.

Instrument	METEK Micro Rain Radar 2 (MRR)
Operating mode	FM-CW Doppler
Spatial coverage	Vertically profiling
Center frequency	24.23 GHz ($\lambda = 1.24$ cm)
Frequency modulation	0.5–15 MHz range resolution dependent
Nominal transmit power	50 mW
Antenna dish	Offset parabolic dish, $\phi = 60$ cm
Beam width (2-way, 6 dB)	1.5 °
Measurement range	100 m ... 3.1 km (at 100 m resolution)
Measurement resolution	100 m (selectable from 30 m to 300 m)
Reporting interval	10 s
Environment conditions	Operational at -40 °C. ... $+60$ °C; wind speeds up to 45 m s ⁻¹
Power consumption	25 W
Installation set up	Natural ventilation of the antenna dish; no antenna heating

Table 5. $Z_e - S$ relationships (Z_e in $\text{mm}^6 \text{m}^{-3}$, S in mm w.e. hour^{-1}) for dry (unrimed) snow for various snowfall particle shapes and parameters.

Ice habit or parameters	$Z_e - S$ relationships
Three-bullet rosettes *	$Z_e = 24.04S^{1.51}$
Aggregates *	$Z_e = 313.29S^{1.85}$
Low-density spheres *	$Z_e = 19.66S^{1.74}$
Aggregate spheroids **	$Z_e = 56S^{1.2}$
- increasing r **	$Z_e = 34S^{1.1}$
- increasing/decreasing m **	$Z_e = 66S^{1.2}/Z_e = 48S^{1.2}$
- increasing/decreasing V_t **	$Z_e = 46S^{1.2}/Z_e = 67S^{1.2}$

* Relationships derived by Kulie and Bennartz (2009) using different ice habit models and their backscattering characteristics.

** Relationships derived by Matrosov (2007) for aggregated snowflakes approximated as spheroids using various assumptions on particle radius (r), mass (m)-size relations, and fall velocity (V_t)-size relations.

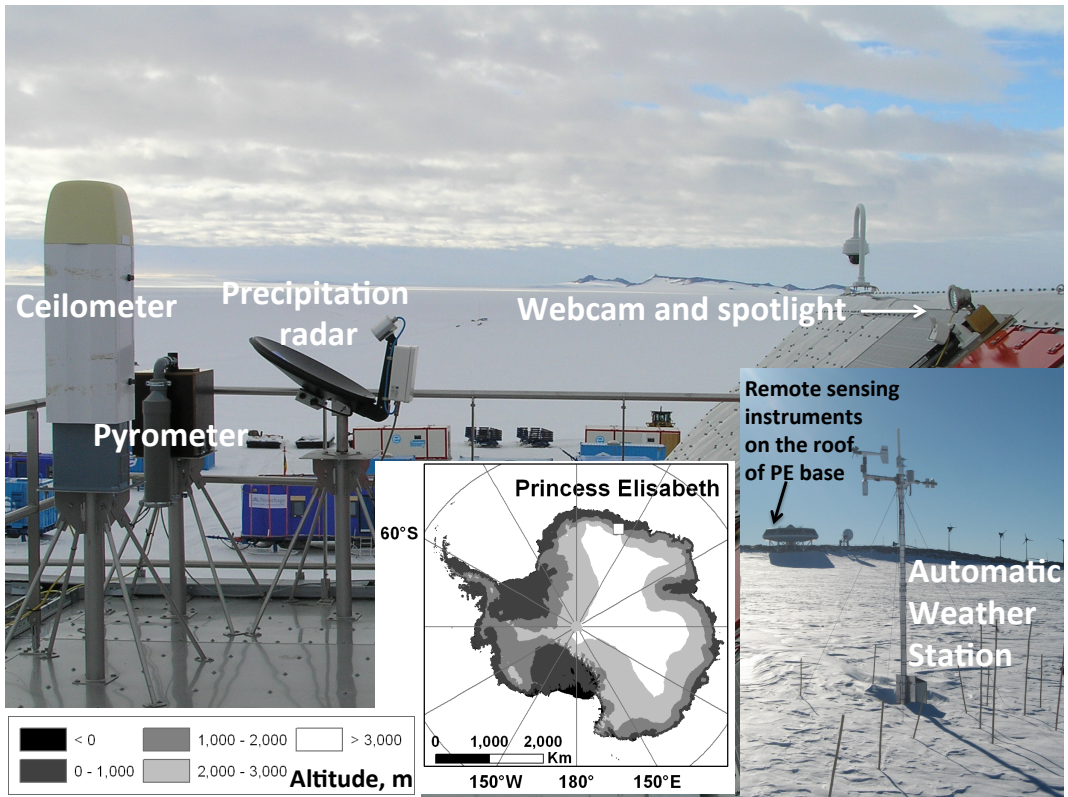


Figure 1. The cloud-precipitation-meteorological observatory HYDRANT at the Princess Elisabeth base in East Antarctica. Shown on the figure are the ceilometer, the infrared pyrometer, the vertically-profiling precipitation radar, the webcam with spotlight and the automatic weather station (right lower inset). The middle inset shows the location of the PE station on the Antarctic ice sheet (white square) together with the orography (meters above sea level).

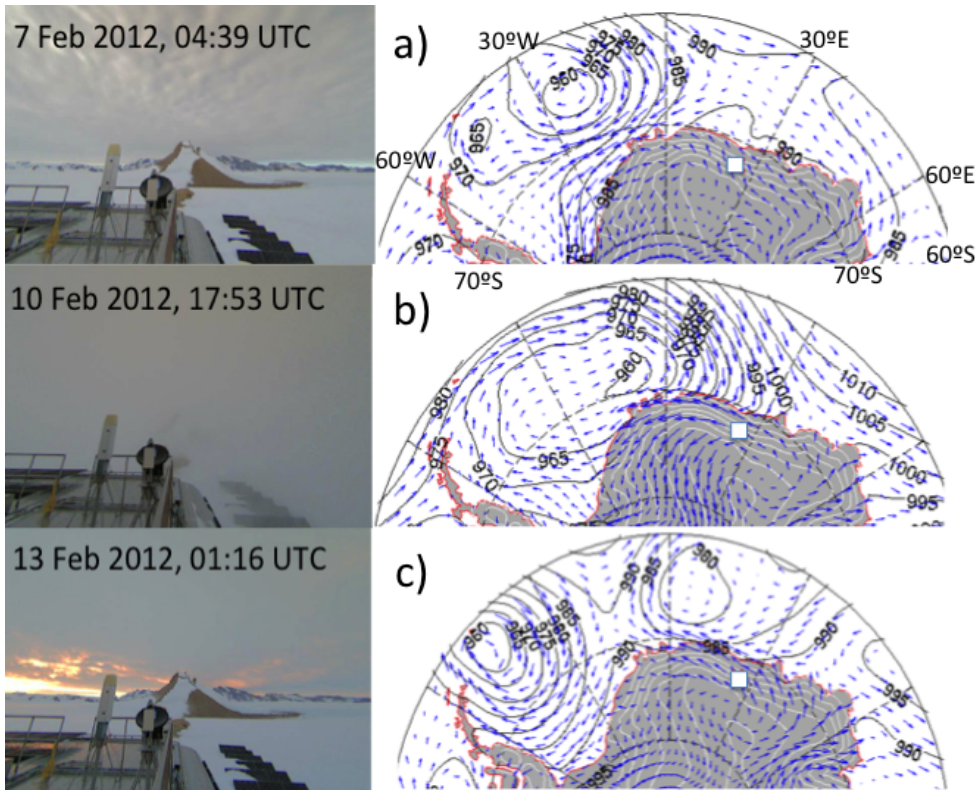


Figure 2. Webcam sky images at specified day and UTC time (left) and maps of corresponding daily mean sea level pressure (contours) and 10-m wind speed and direction (arrows) from ERA-Interim re-analysis data (right) during a) 7 February 2012 (case 1), b) 10 February 2012 (case 2), and c) 13 February 2012 (case 3). The white square indicates the position of PE base. See also webcam movies for each case in Supplementary Material.

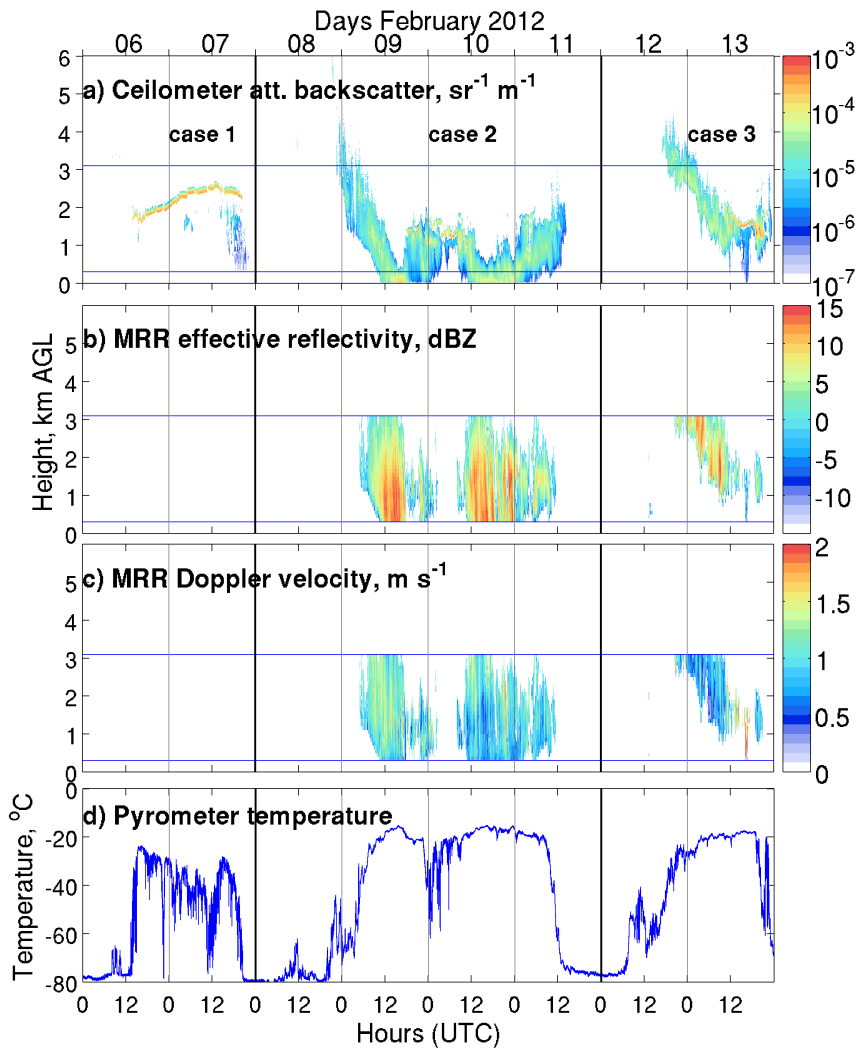


Figure 3. Cloud and precipitation properties derived from ground-based remote sensing instruments during the case studies period 6-13 February 2012: a) ceilometer attenuated backscatter profiles, b) MRR radar effective reflectivity profiles, c) MRR mean Doppler velocity profiles, and d) infrared pyrometer temperature. Horizontal blue lines depict the MRR profile limits from 400 m to 3100 m agl. Vertical black lines delimit cases.

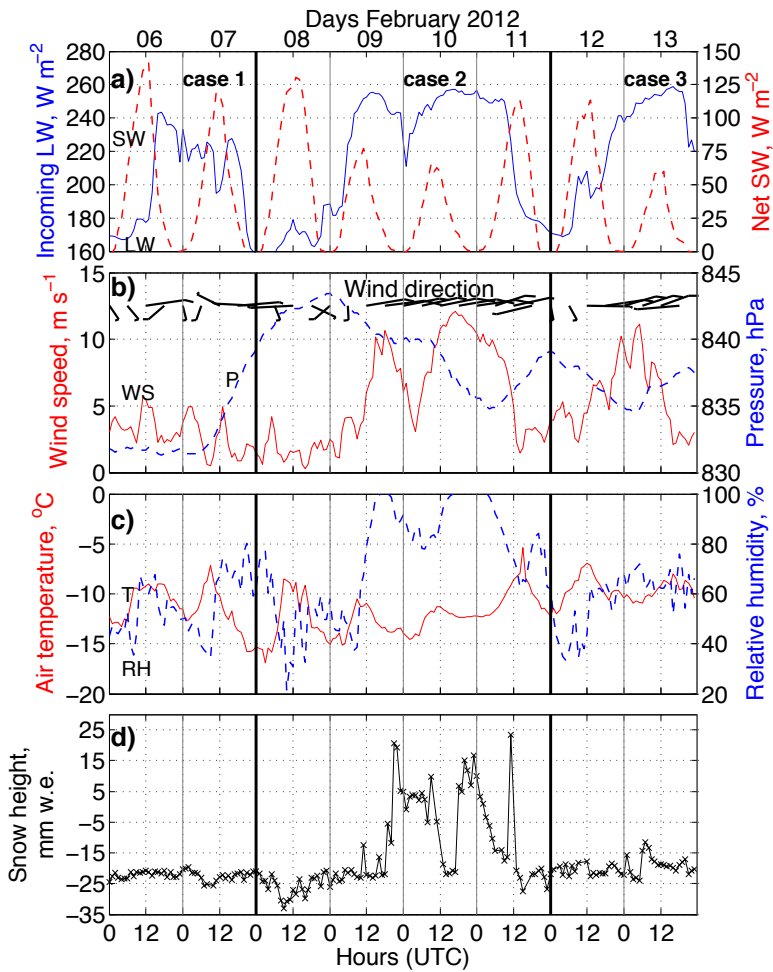


Figure 4. Hourly meteorological parameters during the case studies period 6-13 February 2012: a) incoming longwave (LW) and net shortwave (SW) fluxes, b) wind speed (WS), wind direction (indicated by 'hockey sticks'), and local pressure (P), c) near-surface air temperature (T) and relative humidity with respect to ice (RH), and d) snow height relative to 1 January 2012, 00 UTC.

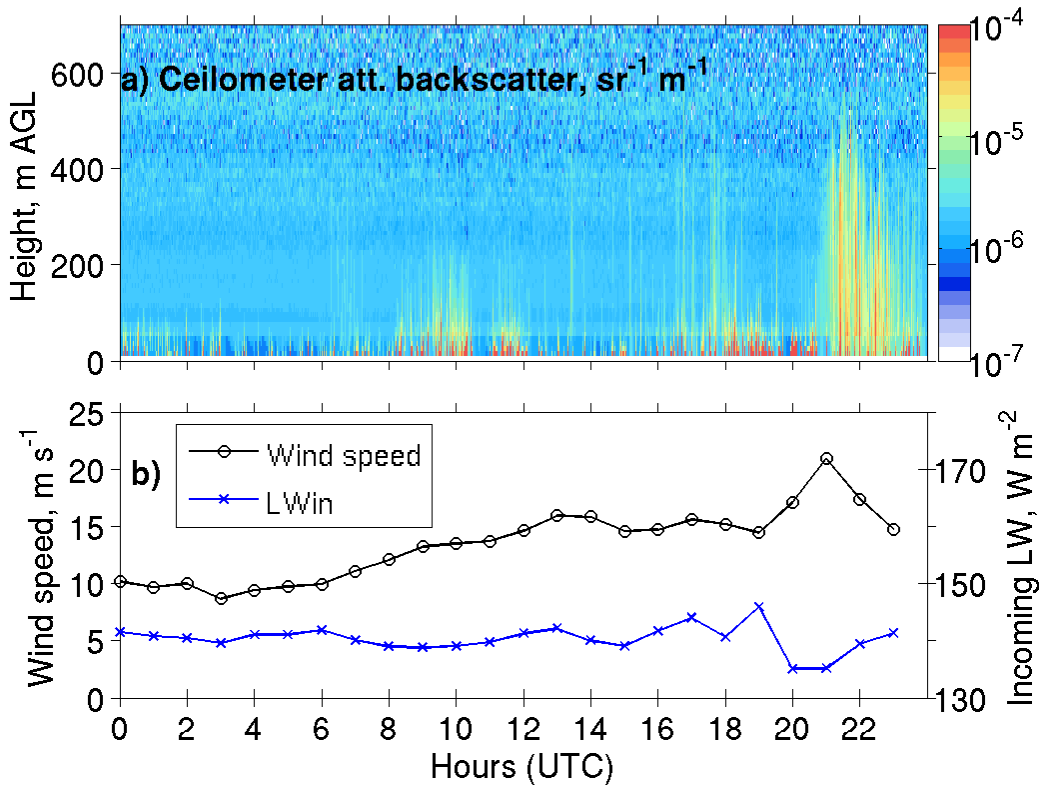


Figure 5. Cloud-free blowing snow event on 8 April 2013 (case 4): a) 15-sec ceilometer raw attenuated backscatter profiles, and b) hourly mean wind speed and incoming LW flux.

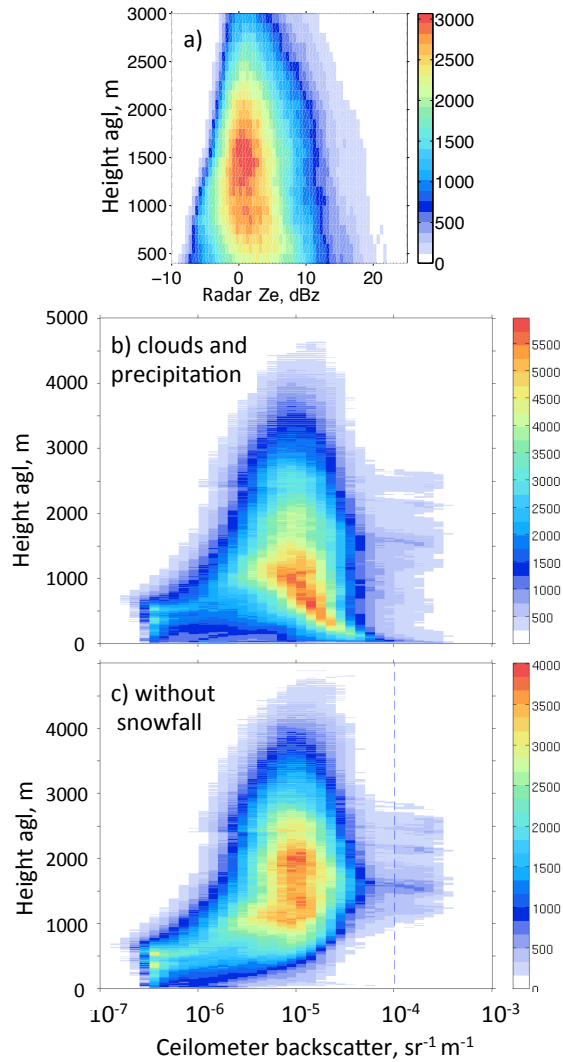


Figure 6. Number of occurrences by height on 1-min temporal scale for a) MRR effective reflectivity (Z_e), b) ceilometer backscatter for all cloudy/precipitation profiles, and c) ceilometer backscatter for cloudy profiles excluding snowfall cases (see section 4.2.1). Based on the measurement periods during 2010-2013 (14 months of cloud measurements mainly in summer/autumn and 26 months of snowfall measurements including an entire year, see Table 1).

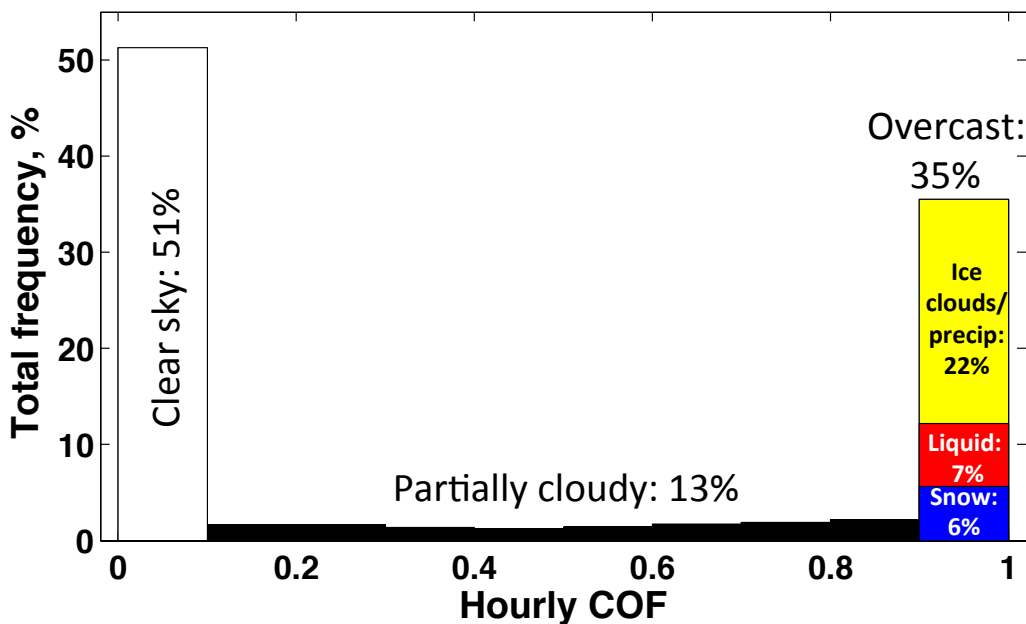


Figure 7. Total frequency relative to the measurement period (%) of hourly mean cloud occurrence frequency (COF, unitless fraction from 0 to 1) for all clouds and precipitation. The column corresponding to COF > 0.9 shows also total frequency of liquid clouds (red), snowfall (blue), and ice clouds/precipitation not detected by MRR (yellow). Based on the measurement periods during 2010-2013 indicated in Table 1 (14 months mainly in summer/autumn).

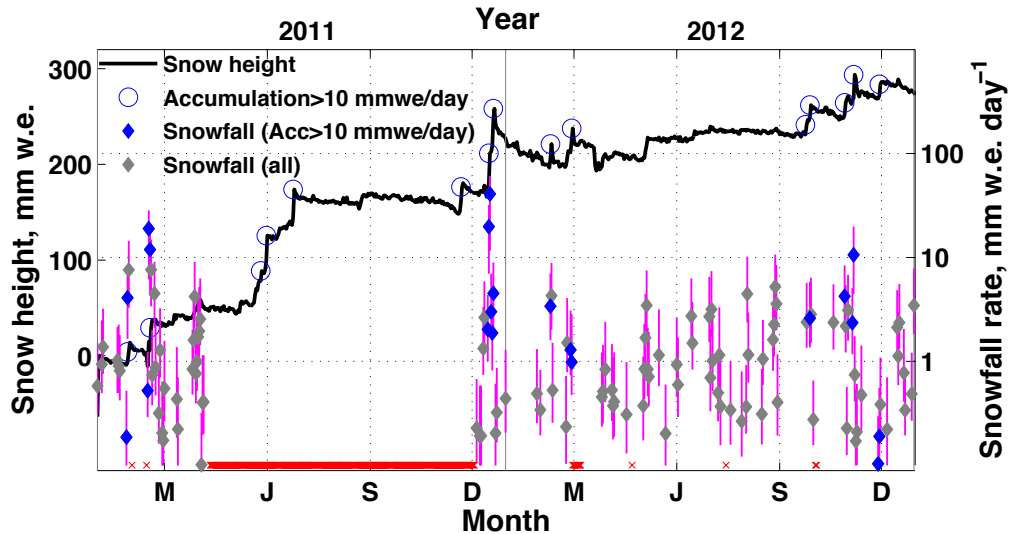


Figure 8. Daily snow height (with respect to 1 January 2011) and snowfall rate (S) during 2011-2012. High accumulation events ($> 10 \text{ mm w.e. day}^{-1}$) are marked with blue circles and corresponding snowfall events - with blue diamonds. Grey diamonds show all other snowfall events. Vertical magenta lines show uncertainty in S for a range of $Z_e - S$ relationships for dry snow (Table 5, Section 3.2). Horizontal red bar and crosses at bottom indicate gaps in snowfall measurements. Letters on x-axis mark the 1st day of each month.

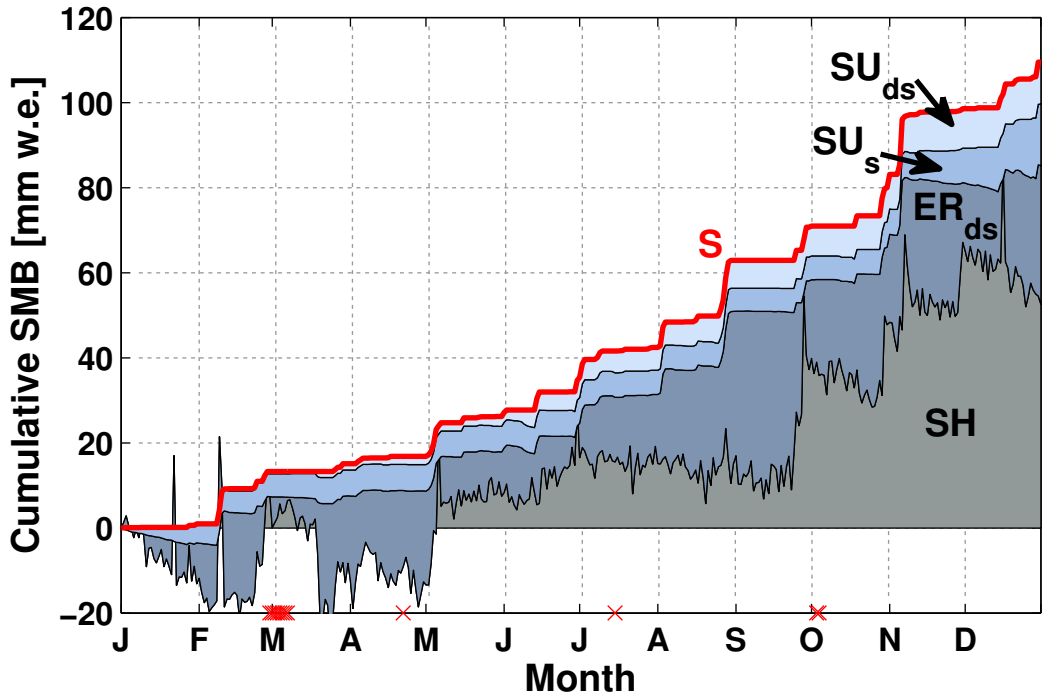


Figure 9. Cumulative daily surface mass balance (SMB) components during 2012: snowfall (S), surface sublimation (SU_s), drifting snow sublimation (SU_{ds}), drifting snow erosion (ER_{ds}), and measured snow height changes since 1 January 2012 (SH) (section 4.2.4). SU_s and SU_{ds} are plotted as S removal. ER_{ds} is calculated and plotted as a residual term: $ER_{ds} = S - SU_{ds} - SU_s - SH$. Red crosses at the bottom indicate days of missing MRR data. Letters on x-axis mark the 1st day of each month.