

This discussion paper is/has been under review for the journal The Cryosphere (TC).
Please refer to the corresponding final paper in TC if available.

Future permafrost conditions along environmental gradients in Zackenberg, Greenland

S. Westermann^{1,2}, B. Elberling¹, S. Højlund Pedersen³, M. Stendel⁴,
B. U. Hansen¹, and G. E. Liston⁵

¹Center for Permafrost (CENPERM), Department of Geosciences and Natural Resource Management, University of Copenhagen, Øster Voldgade 10, 1350 Copenhagen K., Denmark

²Department of Geosciences, University of Oslo, P.O. Box 1047, Blindern, 0316 Oslo, Norway

³Department of Bioscience – Arctic Research Centre, Aarhus University, Frederiksborgvej 399, 4000 Roskilde, Denmark

⁴Danish Climate Centre – Danish Meteorological Institute, Lyngbyvej 100, 2100 Copenhagen, Denmark

⁵Cooperative Institute for Research in the Atmosphere, Colorado State University, 1375 Campus Delivery, Fort Collins, CO 80523-1375, USA

Received: 14 May 2014 – Accepted: 9 July 2014 – Published: 16 July 2014

Correspondence to: B. Elberling (be@ign.ku.dk)

Published by Copernicus Publications on behalf of the European Geosciences Union.

Title Page

Abstract

Introduction

Conclusions

References

Tables

Figures



Back

Close

Full Screen / Esc

Printer-friendly Version

Interactive Discussion



Abstract

The future development of ground temperatures in permafrost areas is determined by a number of factors varying on different spatial and temporal scales. For sound projections of impacts of permafrost thaw, scaling procedures are of paramount importance. We present numerical simulations of present and future ground temperatures at 10 m resolution for a 4 km long transect across the lower Zackenberg valley in NE Greenland. The results are based on stepwise downscaling of General Circulation Model-derived future projections using observational data, snow redistribution modeling, remote sensing data and a ground thermal model. Comparison to in-situ measurements of thaw depths at two CALM sites and 10 m ground temperatures in two boreholes suggest agreement within 0.10 m for the maximum thaw depth and 1 °C for annual average ground temperature. Until 2100, modeled ground temperatures at 10 m depth warm by about 5 °C and the active layer thickness increases by about 30 %, in conjunction with a warming of average near-surface summer soil temperatures by 2 °C. While permafrost remains thermally stable until 2100 in most model grid cells, the thaw threshold is exceeded for a few model years and grid cells at the end of this century. The ensemble of all 10 m model grid cells highlights the significant spatial variability of the ground thermal regime which is not accessible in traditional coarse-scale modeling approaches.

1 Introduction

The stability and degradation of permafrost areas are extensively discussed in the fate of future climate changes as potentially important source of greenhouse gases (Schuur et al., 2008, 2009; Elberling et al., 2010, 2013), as well as in the light of infrastructure stability (Wang et al., 2003, 2006) and farming potential (Mick and Johnson, 1954; Merzlaya et al., 2008). Depending on the emission scenario, future projections based on coarse-scale General Circulation Models (GCM) suggest a loss of 30 % to 70 % of the current near-surface permafrost extent until 2100, in conjunction with a significant

TCD

8, 3907–3948, 2014

Permafrost in NE Greenland

S. Westermann et al.

Title Page

Abstract

Introduction

Conclusions

References

Tables

Figures



Back

Close

Full Screen / Esc

Printer-friendly Version

Interactive Discussion



**Permafrost in NE
Greenland**

S. Westermann et al.

Title Page

Abstract

Introduction

Conclusions

References

Tables

Figures



Back

Close

Full Screen / Esc

Printer-friendly Version

Interactive Discussion



deepening of the active layer in the remaining areas (Lawrence et al., 2012). However, such projections are based on the modeled evolution of coarse-scale grid cells which may not represent significantly smaller variability of environmental factors governing the thermal regime typical for many permafrost landscapes. Hence, a detailed impact assessment for the thermal regime remains problematic, which precludes sound projections of future greenhouse gas emissions from permafrost areas.

Regional Climate Models (RCMs) facilitate downscaling of GCM output to scales of several kilometers so that e.g. regional precipitation patterns and topography-induced temperature gradients are much better reproduced. Based on RCM output, projections of the future ground thermal regime have been performed for a number of permafrost regions, e.g. NE Siberia (50 km resolution, Stendel et al., 2007), Greenland (25 km resolution, Daanen et al., 2011), and Alaska (2 km resolution, Jafarov et al., 2012). While this constitutes a major improvement, many processes governing the ground thermal regime vary strongly at even smaller spatial scales so that the connection between model results and ground observations is questionable. In high-Arctic and mountain permafrost areas exposed to strong winds, redistribution of blowing snow can create a pattern of strongly different snow depths on distances of a few meters. Since snow is an effective insulator between ground and atmosphere (Goodrich, 1982), a distribution of ground temperatures with a range between average maximum and minimum temperatures of 5 °C and more is created (e.g. Gislås et al., 2014), which is of similar order of magnitude as the projected increase of near-surface air temperatures in many polar areas. Consequently, the susceptibility to climate change can display a dramatic variability on local scales and permafrost degradation can occur significantly earlier in parts of a landscape than suggested by coarse-scale modeling. Furthermore, the thermal properties and cryostratigraphy of the ground can be highly variable as a result of geomorphology, vegetation and hydrological pathways, with profound implications for the thermal inertia and thus the dynamics of permafrost degradation. In a modeling study for Southern Norway, Westermann et al. (2013) highlights that near-surface permafrost in bedrock areas disappears within a few years after the climatic

Permafrost in NE
Greenland

S. Westermann et al.

Title Page

Abstract

Introduction

Conclusions

References

Tables

Figures



Back

Close

Full Screen / Esc

Printer-friendly Version

Interactive Discussion



forcing crosses the thawing threshold, while near-surface permafrost is conserved for more than two decades in areas with high organic and ground ice contents and/or a dry insulating surface layer. In addition, the soil carbon content in Arctic landscapes is unevenly distributed (Hugelius et al., 2013), and GHG emissions from localized carbon-rich hotspots can contribute a significant part to the landscape signal (e.g. Walter et al., 2006; Mastepanov et al., 2008). Therefore, both the carbon stocks and the physical processes governing permafrost evolution must be understood at the appropriate spatial scales to facilitate improved predictions on the permafrost-carbon feedback.

In recent years, modeling schemes capable of computing the ground thermal regime at significantly higher spatial resolutions of 10 to 30 m have been developed and applied in complex permafrost landscapes (e.g. Zhang, 2013; Zhang et al., 2013; Fiddes and Gruber, 2012, 2014; Fiddes et al., 2013). These approaches can capture small-scale differences in altitude, aspect and exposition, as well as in surface and subsurface properties, but the redistribution of snow through wind drift is only included in a simplified way through precipitation correction factors (Fiddes et al., 2013; Zhang et al., 2012). On the other hand, dedicated snow redistribution models of various levels of complexity exist (e.g. Winstral et al., 2002; Lehning et al., 2006) with which the pattern and evolution of snow depths can be simulated.

In this study, we make use of such an approach, the deterministic snow modeling system MicroMet/SnowModel (Liston and Elder, 2006a, b), to achieve high-resolution simulations of the ground thermal regime at the Zackenberg permafrost observatory in NE Greenland (Meltofte et al., 2008) until 2100. MicroMet/SnowModel is employed as part of a sequential downscaling procedure, including the RCM HIRHAM5 (Christensen et al., 1996) and the ground thermal model CryoGrid 2 (Westermann et al., 2013). With a spatial resolution of 10 m, the effect of snow distribution patterns and different subsurface and surface properties on ground temperatures can be accounted for. The study aims to fill the gap between the coarse- and the point-scale modeling studies on the future ground thermal regime which are available for the Zackenberg valley so far. The 25 km-scale, Greenland-wide assessment of Daanen et al. (2011) puts Zackenberg in

the zone of “high thaw potential” until the end century, with modeled ground temperatures of -5 to -2.5°C and an active layer thickness of 0.5 to 0.75 m for the period 2065–2075. On the other hand, the detailed point-scale study by Hollesen et al. (2011) suggests a future active layer thickness of 0.8 to 1.05 m for a site with average soil moisture conditions which is not representative for many other sites, e.g. the wetlands, found in the Zackenberg valley. Extending this earlier work, we present simulations for a 4 km-transect cutting across typical vegetation zones in the lower parts of Zackenberg valley which allow estimating the range of ground thermal conditions that could be encountered until the end of the century.

2 The Zackenberg site

Zackenberg valley ($74^{\circ}30' \text{ N}$, $20^{\circ}30' \text{ W}$) is a wide lowland valley dominated by Quaternary non-calcareous sediments with significant periglacial activity and continuous permafrost (Elberling et al., 2004, 2008), with a mean annual air temperature of -9.5°C (1996–2007) according to Elberling et al. (2010). Maximum active layer thickness varies from 40 cm to more than 2 m and has increased significantly by 0.8 cm to 1.5 cm per year between 1996 and 2012 (Elberling et al., 2013), which has been determined at two sites (denoted ZeroCalm 1 and 2) of the “Circumpolar Active Layer Monitoring” (CALM) program (Brown et al., 2000). This increasing thickness of the active layer represents only a fraction of the permafrost degradation taking the high ice contents (40–80 %) into account.

From the hilltops towards the depressions, an increase in soil water content is seen from dry to wet conditions at the foot of the slopes due to snow melt water being released during large parts of the summer. Roughly one third of the lowland area in Zackenberg is poorly drained. Given the low summer precipitation, water availability during the growing season is mainly controlled by the location of large snow patches melting during the growing season, resulting in the distinct vegetation zonation around these.

Title Page

Abstract

Introduction

Conclusions

References

Tables

Figures



Back

Close

Full Screen / Esc

Printer-friendly Version

Interactive Discussion



Permafrost in NE
Greenland

S. Westermann et al.

Title Page

Abstract

Introduction

Conclusions

References

Tables

Figures



Back

Close

Full Screen / Esc

Printer-friendly Version

Interactive Discussion



The topography, landscape forms and wind direction are main factors controlling both water drainage and snow distribution. These patterns are found on both a landscape scale and a small scale (100–200 m) and can therefore be illustrated conceptually as a transect across typical landscape forms in the valley from hilltops to depressions.

The top of the hills are windblown and exposed throughout the year with little or no accumulation of snow. From the hilltops towards the depressions there is an increase in soil water content from dry conditions (even arid conditions and salt accumulation at the soil surface) at the hilltops to wet conditions in the bottom of the depression. The dominant wind pattern during winter leaves large snow-patches on the south facing slopes ensuring high surface and soil water contents during a large part of the growing season.

Bay (1998) described and classified the plant communities in the central part of the Zackenberg valley and mapped their distribution. The vegetation zones range from fens in the depressions to fell-fields and boulder areas towards the hill-tops. East of the river Zackenbergelven the lowland is dominated by *Cassiope tetragona* heaths mixed with *Salix arctica* snow-beds, grasslands and fens; the latter occurring in the wet, low-lying depressions, often surrounded by grassland. On the transition from the lowland to the slopes of Aucellabjerg (50–100 m a.s.l.), the vegetation is dominated by grassland. Between 150 and 300 m a.s.l., open heaths of mountain avens, *Dryas* sp., are dominating, and gradually the vegetation becomes more open with increasing altitude towards the fell-fields with a sparse plant cover of *Salix arctica* and *Dryas* sp. Grassland, rich in vascular plant species and mosses, occurs along the wet stripes from the snow-patches in the highland (250–600 m a.s.l.).

For monitoring purposes, a transect cutting across the main ecological zones of the Zackenberg valley from sea level to 1040 m a.s.l. at the summit of Aucellabjerg has been established. Along this so-called ZERO (“Zackenberg Ecological Research Operations”) line (Fredskild and Mogensen, 1997; Meltofte et al., 2008), changes in species composition and distribution of plant communities are investigated regularly. The most recent analysis in 2005 showed no distinct signs of floristic changes since

2000, although the major snow-patches in the area have been diminishing during the last five years.

3 Modeling tools

In order to sample the spatial variability of ground temperatures in the Zackenberg valley, simulations from 1960 to 2100 are performed for grid cells of 10 m resolution for the lower 4 km of ZERO-line from the coast to an elevation of 200 m a.s.l. (in total 437 grid cells). In addition, the 100 by 100 m large CALM sites ZeroCalm 1 and 2 are simulated (in total 200 grid cells). To compile forcing data sets at such high resolution, a multi-step downscaling procedure is employed, which is schematically depicted in Fig. 1. It is designed to account for the spatial variability of snow depths, differences in summer surface temperature (due to e.g. different evapotranspiration rates caused by surface soil moisture and land cover), as well as spatially variable ground thermal properties and water/ice contents. Differences in insolation due to exposition and aspect are not accounted for which is acceptable for the gentle topography (average slope 2.8°) in the modeled part of ZERO-line. In the following, the different parts of the scheme and their interplay are described.

3.1 The permafrost model CryoGrid 2

CryoGrid 2 is a physically-based thermal subsurface model driven by time series of near-surface air temperature and snow depth which has been recently employed to assess the evolution of permafrost extent and temperatures in Southern Norway (Westermann et al., 2013). The physical basis and operational details of CryoGrid 2 are documented in Westermann et al. (2013), so that only a brief overview over the model properties is given here. CryoGrid 2 numerically solves Fourier's Law of conductive heat transfer in the ground to determine the evolution of ground temperature T [K] over

TCD

8, 3907–3948, 2014

Permafrost in NE Greenland

S. Westermann et al.

Title Page

Abstract

Introduction

Conclusions

References

Tables

Figures

⏪

⏩

◀

▶

Back

Close

Full Screen / Esc

Printer-friendly Version

Interactive Discussion



time t ,

$$c_{\text{eff}}(z, T) \frac{\partial T}{\partial t} - \frac{\partial}{\partial z} \left(k(z, T) \frac{\partial T}{\partial z} \right) = 0, \quad (1)$$

with the thermal conductivity k [$\text{W m}^{-1} \text{K}^{-1}$] being a function of the volumetric fractions and thermal conductivities of the constituents water, ice, air, mineral and organic (Westermann et al., 2013) following the formulation of Cosenza et al. (2003). For the thermal conductivity of the mineral fraction of the soil, we assume $3.0 \text{ W m}^{-1} \text{K}^{-1}$ which is a typical value for sedimentary and metamorphic rock with low quartz content (Clauser and Huenges, 1995), as dominant in most parts of the Zackenberg valley (Koch and Haller, 1965). For the organic soil fraction, the standard value of $0.25 \text{ W m}^{-1} \text{K}^{-1}$ (e.g. Côté and Konrad, 2005) for peat is employed.

The latent heat from freezing soil water or melting ice is accounted for in terms of an effective heat capacity c_{eff} [$\text{J m}^{-3} \text{K}^{-1}$], which increases strongly in the temperature range in which latent heat effects occur. Its shape is determined by the soil freezing characteristic, i.e. the function linking the soil water content to temperature, which is related to the hydraulic properties of the soil in CryoGrid 2 (Dall'Amico et al., 2011) for three soil classes, sand, silt and clay. To account for the build-up and disappearance of the snow cover, the position of the upper boundary is allowed to change dynamically by adding or removing grid cells. Movement of soil water is not accounted for, so that the sum of the soil water and ice contents are constant in CryoGrid 2. For spatially distributed modeling, the target domain is decomposed in independent grid cells each featuring a set of model parameters.

Model initialization: The initial temperature profile for each grid cell is obtained by a multi-step initialization procedure, which allows to approximate steady-state conditions in equilibrium with the climate forcing for the first model decade (September 1958–August 1968) in a computationally efficient way. The method which is described in more detail in (Westermann et al., 2013) accounts for the insulating effect of the seasonal snow cover as well as the thermal offset (Osterkamp and Romanovsky, 1999).

Driving data sets: To account for small-scale differences in surface soil moisture, which give rise to spatially different surface temperatures, we employ the empirical concept of n factors, which relate average air temperature T_{air} to surface temperature T_{s} by $T_{\text{s}} = n_t T_{\text{air}}$:

$$T_{\text{s}} = \begin{cases} T_{\text{air}} & \text{for } T_{\text{air}} \leq 0^\circ\text{C} \\ n_t T_{\text{air}} & \text{for } T_{\text{air}} > 0^\circ\text{C} \end{cases} \quad (2)$$

This rough treatment of summer surface temperatures (which has been applied in previous modeling studies, e.g. Hipp et al., 2012) is focused on seasonal averages and can not reproduce surface temperatures on shorter timescales, e.g. the daily cycle.

As a result, a comparison of temperatures in upper soil layers is less meaningful than for deeper layers, which are only influenced by seasonal or even multi-annual average temperatures. However, the n factor based approach precludes the need to compute the surface energy balance, and allows employing measured historic time series of air temperatures (such as the one from Daneborg, Sect. 3.4) for ground thermal modeling.

The summer-time n factor n_t is computed according to the “Normalized Difference Vegetation Index” NDVI of each grid cell using

$$n_t = 2.42 \text{NDVI}^2 - 3.01 \text{NDVI} + 1.54 \quad (3)$$

The relationship is compiled with n_t as the ratio of degree-day sums at the soil surface to that in the air over the summer season at both Zackenberg (74.5° N) and Kobbefjord (65.6° N) close to Nuuk in W Greenland. As n_t is known to be strongly affected by the cover fraction and the amount of vegetation the widely used NDVI at the maximum of the growing season was used as the controlling factor (Fig. 2). n_t values near unity indicate little difference between the degree-day sums at the soil surface and the air and $n_t = 1$ is given by NDVI = 0.2, which equalize a biomass production of 315 kg ha⁻¹ (Jacobsen and Hansen, 1999), a cover fraction of 5% (Jacobsen and Hansen, 1999) and LAI = 0.06 (Soegaard et al., 2000). The summer n_t factors above 1 indicate that

Title Page

Abstract

Introduction

Conclusions

References

Tables

Figures

I◀

▶I

◀

▶

Back

Close

Full Screen / Esc

Printer-friendly Version

Interactive Discussion



Permafrost in NE
Greenland

S. Westermann et al.

Title Page

Abstract

Introduction

Conclusions

References

Tables

Figures



Back

Close

Full Screen / Esc

Printer-friendly Version

Interactive Discussion



the soil-surface temperatures are warmer than the air temperatures and this mostly occurs on nearly barren mineral soils. The minimum n_t values of approx. 0.65 are found in moist fen areas indicating a strong cooling effect during the summer on the mineral soils of these sites. Fig. 2 also shows a strong correlation between n_t values (Klene et al., 2001) and NDVI values (Walker et al., 2003) from the Kuparuk River Basin, Alaska, USA.

For each 10 m model grid cell, an NDVI value was accumulated from a 2.5 m multi-spectral Quickbird 2 image of the Zackenberg area acquired around noon on 7 July 2011. While the acquisition date is close to the annual maximum of NDVI values, it represents a single point in time. Therefore, it must be put in perspective to the strong seasonal and interannual variability in plant growth and consequent evolution of NDVI values (Tamstorf et al., 2007). While this constitutes hard to quantify error source, the general agreement in the coverage of the different vegetation classes (see Sect. 3.2) with field observations suggests that the satellite image is an adequate basis to capture the pattern of surface soil moisture and summer surface temperatures along ZERO-line.

Ground properties: Based on a NDVI-classification, six ecosystems were identified in Zackenberg valley (Bay, 1998; Tamstorf et al., 2007; Ellebjerg et al., 2008). Areas with NDVI < 0.2 are dominated by fell-field with a sparse vegetation. In the high mountains such areas are found on solifluction soils, patterned ground and rocky ravines. *Dryas* heath dominates areas with NDVI between 0.2 and 0.3. Fell-field and *Dryas* heath are both situated at exposed plateaus, where snow often blows off during the winter months and hence have thinner snow cover. Here, plant species experience an early snowmelt and hence, an early start of the growing season. *Cassiope* heath (NDVI between 0.3 and 0.4) depends on a protective snow cover during winter which occurs mainly in the lowland on gentle slopes facing south and leeward from the northerly winds which dominate the winter period (Hansen et al., 2008). *Salix* snow-bed features NDVI values between 0.4 and 0.5. This ecosystem, which is unique for E Greenland, occurs mostly on sloping terrain often below the *Cassiope* heath belt on the slopes, where the

Permafrost in NE
Greenland

S. Westermann et al.

Title Page

Abstract

Introduction

Conclusions

References

Tables

Figures



Back

Close

Full Screen / Esc

Printer-friendly Version

Interactive Discussion



snow cover is long-lasting, so that the soil moisture in the *Salix* snow-bed areas are higher. In the wetland areas with NDVI higher than 0.5, grassland and fen areas are distinguished. Grassland occurs mostly on slightly sloping terrain with adequate supply of water early in the season, while the soil water regime can change from wet to moist later in the season. The fen areas occur on flat terrain in the lowland, where the soil is permanently water-saturated throughout the growing season. In August 2013, a classification of ecosystem classes according to the dominating plant species and qualitative surface moisture conditions was conducted along the modeled part of ZERO-line at spatial resolution of 10 m which resulted in 5 % fell, 20 % *Dryas*, 35 % *Cassiope*, 15 % *Salix* snow-bed and 25 % wetland (fen and grassland areas were not distinguished).

Using satellite-derived NDVI values (see previous section), these ecosystem fractions could be well reproduced for fell (9 %), *Dryas* (22 %) and *Cassiope* (39 %), while a strong discrepancy was encountered for the *Salix* and wetland classes. Therefore, *Salix* snow-bed was merged with wetland, yielding a wetland fraction of 30 %. The “true” *Salix* class is hereby split between *Cassiope* and wetland which is reflected in the strong concentration of grid cells with NDVI values around 0.4. This suggests a significant overlap of the NDVI values from the different classes in this region for the particular satellite acquisition date, so that the classes can not be separated by their NDVI value. While the NDVI-derived ecosystem classification constitutes a potentially important source of uncertainty in the modeling chain, it provides the possibility to use satellite images and thus apply the classification procedure for larger regions, e.g. the entire Zackenberg valley, at high spatial resolutions, which can hardly be achieved by manual mapping.

For the remaining four classes fell, *Dryas*, *Cassiope* and wetland, typical soil stratigraphies were assigned based on and guided by in-situ measurements in soil samples (Table 1). The stratigraphies are designed to represent the characteristics of the different ecosystem classes at least in a semi-quantitative way: from fell to wetland, the water contents in the active layer increase from dry to saturated conditions, while the soil texture changes from coarse to more fine-grained in conjunction with increasing

[Title Page](#)[Abstract](#)[Introduction](#)[Conclusions](#)[References](#)[Tables](#)[Figures](#)[I◀](#)[▶I](#)[◀](#)[▶](#)[Back](#)[Close](#)[Full Screen / Esc](#)[Printer-friendly Version](#)[Interactive Discussion](#)

porosity. The absolute values are oriented at soil samples taken at depths between 0 and 0.5 m in the different classes mainly in July 2006 and 2007. For wetland and *Cassiope*, the average of all values yielded volumetric water contents of 0.52 and 0.28, respectively. Furthermore, transient simulations of the 1-D-water balance and ground thermal regime with the COUP model suggest average soil water contents between 0.2 and 0.3 for the active layer at a *Cassiope* site (Hollesen et al., 2011). For the *Dryas* and fell classes, large changes in soil moisture were encountered after rain falls which made the values strongly dependent on the timing of the sampling. With 5 % and less, the volumetric contents of organic material are low in all classes and have negligible influence on the thermal properties of the soil. Following measurements of soil cores to 2 m depth (Elberling et al., 2010), saturated conditions are assumed below the current active layer for all classes (Table 1), except for fell for which no in-situ data are available. Furthermore, bedrock is assumed below 10 m which is a pure estimate but has limited influence on the outcome of the simulations.

Snow properties: In CryoGrid 2, constant thermal properties in space and time are assumed for the snow cover (see Westermann et al., 2013, for details). Following in-situ measurements, a snow density of 300 kg m^{-3} is employed, which results in a volumetric heat capacity of $c_{\text{snow}} = 0.65 \text{ MJ m}^{-3} \text{ K}^{-1}$. In the absence of in-situ measurements of the thermal conductivity of the snow cover, we use the empirical relationship between density and thermal conductivity from Yen (1981), which is also employed in the detailed snowpack scheme CROCUS (Vionnet et al., 2012). The resulting value is $k_{\text{snow}} = 0.25 \text{ W m}^{-1} \text{ K}^{-1}$, slightly lower than those employed in CryoGrid 2 simulations for the mountain environments of Southern Norway where average winter temperatures are higher than in Zackenberg, but predominantly wind-packed snow is encountered as well.

3.2 Future climate scenario with HIRHAM

There are several types of uncertainties related to climate projections. Apart from “external” uncertainties such as the future evolution of greenhouse gas emissions, there

are also “internal” uncertainties related to different parameterizations of subgridscale processes. For this reason, it is desirable to use a GCM with as high resolution as possible, which serves as the basis for downscaling to the target grid of a RCM driven with these fields.

The climate model EC-EARTH (v2.3) is such a GCM. It consists of the Integrated Forecast System (IFS) developed at the European Centre for Medium Range Weather Forecasts (ECMWF) as the atmospheric component, the Nucleus for European Modelling of the Ocean (NEMO) version 2 as the ocean component and the Louvain-la-Neuve sea ice model (LIM2). These components are coupled using the OASIS3 coupler (Hazeleger et al., 2010, 2012). The IFS in the current EC-EARTH model is based on ECMWF cycle 31r1 with some improvements from later cycles implemented, including a new convection scheme and a new land surface scheme (H-TESSSEL) as well as a new snow scheme (Hazeleger et al., 2012). The atmospheric part of EC-EARTH is configured with a horizontal spectral truncation of T159, which is approximately 125 km × 125 km in latitude and longitude. The vertical resolution is 62 layers. The ocean and sea ice components have 42 vertical layers and a roughly 1 degree horizontal resolution with refinement to 1/3 degree around the equator. EC-Earth is one of the models of CMIP5 (Coupled Model Intercomparison Project) and has been used for the experiments for the IPCC AR5 report.

To resolve the topography of Greenland adequately, a horizontal resolution of 5 km or finer is required (Lucas-Picher et al., 2012). The output of EC-Earth is therefore downscaled to the RCM grid. The RCM used here is HIRHAM5 in its newest version, which includes calculation of the surface mass balance of the Greenland Ice Sheet. A surface snow scheme has been implemented over glaciers. The model setup is described in Rae et al. (2012) except that the resolution here is 0.05 degrees (5.5 km) instead of 0.25 degrees (27 km), as in Mottram et al. (2014) and Langen et al. (2014). EC-Earth has a slight cold bias, probably caused by too high albedo values, so that the estimates of surface mass balance under climate change conditions are slightly higher than observed.

Permafrost in NE Greenland

S. Westermann et al.

Title Page	
Abstract	Introduction
Conclusions	References
Tables	Figures
◀	▶
◀	▶
Back	Close
Full Screen / Esc	
Printer-friendly Version	
Interactive Discussion	



Permafrost in NE
Greenland

S. Westermann et al.

Title Page

Abstract

Introduction

Conclusions

References

Tables

Figures

I ◀

▶ I

◀

▶

Back

Close

Full Screen / Esc

Printer-friendly Version

Interactive Discussion



EC-Earth and HIRHAM have been run for three time slices, namely 1991–2010, 2031–2050 and 2081–2100. The scenario used was RCP 4.5 (Thomson et al., 2011; Clarke et al., 2007; Smith and Wigley, 2006; Wise et al., 2009), which gives an additional radiative forcing in 2100 with respect to preindustrial values of 4.5 W m^{-2} . In this rather conservative scenario, CO_2 emissions peak around 2040 and decline thereafter, resulting in a CO_2 concentration of 550 ppm in 2100, which is just below a doubling with respect to preindustrial values.

3.3 Modeling snow distribution by MicroMet/SnowModel

SnowModel is a spatially distributed snow-evolution modeling system (Liston and Elder, 2006a) which was applied in the Zackenberg study area (14 km by 12 km) to describe the snow distribution through a seven year period covering August 2003 to September 2010. SnowModel consists of three interconnected submodels: Enbal, SnowPack, and SnowTran-3D. Enbal calculates surface energy exchanges and snowmelt (Liston, 1995, 1999), SnowPack models the evolution of the snow depth and snow-water equivalent in time and space (Liston and Hall, 1995; Liston and Mernild, 2012), and the transport of blowing snow is generated by SnowTran-3D (Liston and Sturm, 1998; Liston et al., 2007). SnowModel was coupled with a high-resolution atmospheric model, MicroMet (Liston and Elder, 2006b), which spatially distributed the micrometeorological input parameters over the simulation domain. MicroMet requires meteorological station and/or atmospheric (re)analysis inputs of air temperature, relative humidity, precipitation, wind speed, and wind direction. Furthermore, available observed incoming shortwave and longwave radiation were included. All meteorological parameters except precipitation were measured by five automatic weather stations distributed in the valley and on mountains contained within the simulation domain (Table 2).

Because of missing data and uncertainties associated with in situ winter precipitation measurements, MicroMet precipitation inputs were provided by the North American Regional Reanalysis (NARR) (Mesinger et al., 2006). These NARR precipitation fluxes were adjusted using the SnowAssim (Liston and Hiemstra, 2008) data assimila-

[Title Page](#)[Abstract](#)[Introduction](#)[Conclusions](#)[References](#)[Tables](#)[Figures](#)[Back](#)[Close](#)[Full Screen / Esc](#)[Printer-friendly Version](#)[Interactive Discussion](#)

tion scheme under the constraint that modeled snow-water-equivalent depth matched observed pre-melt snow depth and snow density at locations where those observations were made. Additionally, a digital elevation model (DEM) and a land-cover map were required for the MicroMet/SnowModel simulations. These distributions were provided over the simulation domain at a 10 m by 10 m spatial resolution. The DEM was based on an August 2000 aerial survey, and the land-cover map was based on the Elberling et al. (2008) vegetation classification. In the land-cover map, vegetated areas were assigned a canopy height which defined the snow-holding depth (shd), i.e. the depth to which the vegetation is able to hold the snow and prevent snow transport by wind (snow over this depth is available for wind redistribution). Non-vegetated areas were assigned a shd of 0.01 m.

The modeled snow depths and the timing of snowmelt are validated against automated and manual snow depth observations conducted in two areas of 100 m × 100 m along ZERO-line (ZeroCalm 1 and 2). Furthermore, the modeled snow depth curves are validated by comparing the melt-out times for each grid cell and year to orthorectified images taken by an automatic camera system at 400 m a.s.l. at the slope of Zackenberg overlooking ZERO-line (Hinkler et al., 2002). For the study area, the modeled melt-out pattern matched the observations generally well, which suggests realistic maximum snow depths at least in case of realistic melt rates.

3.4 Downscaling scheme from GCM to plot scale

To run simulations of permafrost temperatures from 1958 to 2100, a continuous record of the driving data air temperature and snow depth was compiled from various sources. The method assumes that trends in air temperature and precipitation measured at one point or modeled by a medium-scale atmospheric scheme are representative for the trends along ZERO-Line.

- For the period from 2003 to 2010, a continuous record of forcing data is derived for all 10-m-grid cells from the output of MicroMet/SnowModel (Sect. 3.3). This data

**Permafrost in NE
Greenland**

S. Westermann et al.

Title Page

Abstract

Introduction

Conclusions

References

Tables

Figures



Back

Close

Full Screen / Esc

Printer-friendly Version

Interactive Discussion



set constitutes the basis upon which statistical downscaling of point measurements and RCM output (Sect. 3.2) is performed for the remaining time periods.

- To synthesize past air temperature, we employ the long-term air temperature record from Daneborg (74°18' N, 20°13' E), located about 25 km W of Zackenberg, for which an hourly record is available for the periods 1958–1975 and 1979–2011. The gap was filled using linear interpolation between the averages from five years before and five years after for each hourly value.
- For present-day and future air temperatures, the near-surface air temperature from the HIRHAM5 5 km grid cell closest to the study area, which are available for three time slices, 1991–2010, 2031–2050 and 2081–2100. The gaps in between the time slices are filled similar to the gap in the Daneborg record.
- To account for differences in the climate setting between the study area and Daneborg/the HIRHAM grid cell, we calculate the offset of the average air temperatures between the Daneborg/HIRHAM records and the MicroMet/SnowModel output for the period 2003–2010, for which all time series are available simultaneously. A specific offset is calculated for each grid cell and for each month of the year, thus accounting for both the spatial gradients along ZERO-line and the average seasonal differences between the two sites.
- For both the past Daneborg and the future HIRHAM time series, the difference to the monthly average of the 2003–2010 reference period (i.e. a monthly time series of offsets) was calculated. The final time series was synthesized by selecting air temperatures from MicroMet/SnowModel for random years from 2003–2010 and subtracting the spatial and temporal offsets for each grid cell and each month, respectively.
- To model past and future snow melt in climate conditions different from the 2003–2010 MicroMet/SnowModel period, a simple degree day model linking melt rates

[Title Page](#)[Abstract](#)[Introduction](#)[Conclusions](#)[References](#)[Tables](#)[Figures](#)[I◀](#)[▶I](#)[◀](#)[▶](#)[Back](#)[Close](#)[Full Screen / Esc](#)[Printer-friendly Version](#)[Interactive Discussion](#)

to air temperature (e.g. Hock, 2003) is applied. We assume a constant melt factor of 2.5 mm snow water equivalent per degree day for temperatures exceeding -2°C . The numbers are obtained by fitting the snowmelt dates delivered by MicroMet/SnowModel for the 437 10 m grid cells along ZERO-line for the years 2003–2010. The average bias in the snowmelt date of the degree day melt model is 1.2 days.

3.5 Permafrost simulations along the ice edge to sea transect

To put the small-scale simulations along ZERO-line in a regional context, we perform first-order estimates for the permafrost development for sites at the ice edge ($74^{\circ}42' \text{N}$, $22^{\circ}16' \text{W}$), Revet ($74^{\circ}21' \text{N}$, $21^{\circ}50' \text{W}$) half-way between Zackenberg and the ice edge and Daneborg ($74^{\circ}18' \text{N}$, $20^{\circ}13' \text{W}$) close to the outer E coast of Greenland. As driving date for air temperature, the raw HIRHAM air temperature outputs for the closest 5 km grid cell are employed without further downscaling, similar to Stendel et al. (2007) and Daanen et al. (2011). The gaps between the time slices 1991–2010, 2031–2050 and 2081–2100 are filled by stochastically selecting years while the linear trend between the periods is superimposed, similar to the procedure in Sect. 3.4. For the spin-up period prior to 1991, the air temperature trend from measurements in Daneborg is assumed for all locations (procedure as described in Sect. 3.4, but using HIRHAM instead of MicroMet/SnowModel data). Since the pronounced topography of the area can still not be adequately captured in the 5 km HIRHAM runs, snow depths from HIRHAM are not be employed as model input. However, a clear tendency towards shallower snow depths in the inland and higher snow depths towards the outer coast can be discerned. To phenomenologically capture this gradient for the purpose of this first-order approximation, we use the snow depths from Zackenberg (taken as the average of all grid cells of the MicroMet/SnowModel forcing time series employed for high-resolution modeling) reduced by 50 % for the Revet and ice edge sites and increased by 50 % for Daneborg.

4 Model results

4.1 Comparison to field data

To build confidence that the modeling is a satisfactory representation for the true ground thermal conditions, the model results are compared to available in-situ data sets. These comprise in particular thaw depth measurements at ZeroCalm 1 and 2 since 1996, as well as temperatures from deep boreholes since 2012.

Active layer thickness: The modeled and measured maximum thaw depths for seven years for which MicroMet/SnowModel was run and a realistic snow distribution can be assumed are shown in Fig. 3, with the areas selected for comparison equal to Elberling et al. (2013). Most importantly, CryoGrid 2 can capture the significant differences between the three sediment classes *Dryas*, *Cassiope* and wetland caused by the different soil moisture contents. With a few exceptions, CryoGrid 2 can reproduce the measured thaw depth within the spatial variability in the validation areas (indicated by the error bars in Fig. 3), with the exception of the year 2006 which features stronger deviations from the measurements. The spatial variability within the target areas is significantly smaller in the model runs than in nature, most likely since the sediment classification assumes constant soil properties within each class, while the soil composition can vary significantly within a class in reality.

Permafrost temperatures: In deeper layers, ground temperatures are influenced by the temperature forcing of an extended period prior to the measurement. Therefore, borehole measurements are especially well suited to check the long-term performance of a ground thermal model (in this case the model spin-up produced by statistical down-scaling). In 2012, the two deep boreholes in the Zackenberg area featured temperatures at 10 m depth of -5.2°C at a site with a snowdrift, and -6.7°C the meteorological station with more regular snow conditions. These point measurements are well in the range of 10 m-temperatures delivered by CryoGrid 2 along ZERO-line in 2012, which is $(-6.0 \pm 0.6)^{\circ}\text{C}$ and maximum and minimum temperatures of -5.1°C and -8.0°C . The

Title Page

Abstract

Introduction

Conclusions

References

Tables

Figures



Back

Close

Full Screen / Esc

Printer-friendly Version

Interactive Discussion



satisfactory agreement suggests that the statistical downscaling procedure (Sect. 3.4) employed to produce the forcing data for the model spin-up is adequate for the area.

4.2 Evolution of active layer thickness and ground temperatures

The modeled evolution of the temperature distribution at 1 m depth along ZERO-line is shown in Fig. 4. The modeled temperatures extend over a range of 2 to 5 °C from minimum to maximum which is evidence of the significant spatial variability of the ground thermal regime in this landscape. According to the climate change scenario of the future projections (Sect. 3.2), ground temperatures will warm by about 4 °C until 2100, but permafrost will largely remain thermally sustainable along ZERO-line. However, the high-resolution simulations suggest a few localized “weak spots” where the yearly average ground temperatures become positive in some years at the end of this century (Fig. 4).

The future warming of air temperatures predicted by HIRHAM is not constant over the year, with the most pronounced warming of 0.4–0.6 °C per decade occurring in fall, winter and spring, while summer (June to August) temperatures increase by less than 0.2 °C per decade. As a consequence, the annual maximum thaw depths increase only moderately until 2100, from 0.8–1.0 m to 1.1–1.4 m for *Dryas*, from 0.65–0.85 m to 0.8–1.1 m for *Cassiope*, and from 0.5–0.65 m to 0.6–0.8 m for the wetland class (Fig. 5). The climate sensitivity of thaw depths is different between the classes, with a stronger increase for the classes with dryer soils than for the wetlands. It is remarkable that the projected increase is only 0.1–0.2 m in the wetlands which can be related to the high ground ice content in the top permafrost layer.

The biological activity in this high-Arctic ecosystem are strongly related to summer conditions. The simulations suggest a significant increase in average summer temperatures and thawing degree days (Fig. 6) within the effective root depth. The combination of deeper active layer (Fig. 5) and warmer near surface (Fig. 6) summer conditions is an important control for plant growth. Water and nutrients (mainly nitrogen) are being released from the thawing permafrost and the longer growing season and warmer top

Title Page

Abstract

Introduction

Conclusions

References

Tables

Figures



Back

Close

Full Screen / Esc

Printer-friendly Version

Interactive Discussion



soil conditions allow plant to benefit from the additional nutrient and like to result in changes in the competition among plant species for light. This may lead to marked changes in vegetation over time, which however is beyond the scope of this study.

4.3 Ice edge to sea transect

5 The Zackenberg valley is located about halfway between the open Atlantic Ocean and the edge of the Greenland ice sheet, which give rise to a strong climatic gradient from west to east over a distance of less than 100 km. To put the modeling results in this larger-scale perspective, permafrost temperatures at two additional sites along this west-east transect are estimated by using HIRHAM modeling results as input for Cryo-Grid 2 (Sect. 3.5). Figure 7 displays modeled ground temperatures for the ice edge, Revet (located roughly half-way between Zackenberg and the ice edge), Zackenberg and Daneborg located close to the open ocean. Although driven by raw (i.e. not down-scaled) coarse-scale modeling data, the Zackenberg temperatures are mostly within the temperature range provided by the high-resolution MicroMet/SnowModel-based simulations. While the temperatures at Revet and Daneborg are similar to Zackenberg, the model suggests significantly colder ground temperatures close to the ice edge. Furthermore, the warming from present to 2100 is only about half at the ice edge, which suggests a different susceptibility to climate change at this site. The simulations suggest that permafrost further inland continue to be thermally sustainable until well into the next century, while coming close to the thaw threshold at least in localized spots closer to the ocean.

15 It must be emphasized that these simulations of ground temperatures along this ice edge to sea transect must be considered first-order estimates due to simplified treatment of the snow cover (Sect. 3.5) and the lack of adequate representation of the complex topography in the 5 km forcing data. Furthermore, a thorough validation can not be performed in the absence of in-situ data of ground temperatures at the ice edge, Revet and Daneborg.

Title Page

Abstract

Introduction

Conclusions

References

Tables

Figures



Back

Close

Full Screen / Esc

Printer-friendly Version

Interactive Discussion



5 Discussion

5.1 Scaling strategies from GCM to plot scale

The presented simulations of ground temperatures and permafrost state variables are derived from a multi-step downscaling approach (Sect. 3.4), which bridges from the coarse spatial resolution of a GCM (hundreds of km) to the impact scale on the ground (set to 10 m for this study). As such, the scheme is technically capable of bridging five to six orders of magnitude in space. The two main driving environmental variables for the thermal model CryoGrid 2 are surface temperature and snow depth.

The snow depth is assumed to be controlled by wind drift of snow at the target scale of 10 m which is modeled by the snow redistribution scheme MicroMet/SnowModel. MicroMet/SnowModel is a deterministic scheme, which is capable of predicting the snow depth for each model grid cell and thus e.g. reproduce the location of snow drifts and bare-blown spots. Such deterministic high-resolution modeling facilitates a better comparison and validation with ground observations, but is restricted to small model domains for computational reasons. However, SnowModel also includes the ability to simulate snow distributions over large areas (e.g., the ice-free parts of Greenland, several 100 000 km²) using, for example, subgrid snow distribution representations (e.g. Liston et al., 1999; Liston, 2004; Liston and Hiemstra, 2011). Gisnås et al. (2014) recently presented a statistical approach to account for the impact of the small-scale variability of snow depths on ground temperatures which is applicable on large spatial domains.

The surface temperature is derived from air temperature for which the regional gradients are based on the RCM at a scale of 5 km. Within the target area along ZERO-line (a distance of 4 km), variations in air temperature are generally small. Further downscaling to 10 m is accomplished by using a high-resolution NDVI satellite image and the NDVI vs. n factor relationship (Sect. 3.1) which is used to convert air to surface temperatures during the snow-free season. By this scheme, a high-resolution data set of surface temperatures is generated from comparatively low-resolution air tempera-

Title Page

Abstract

Introduction

Conclusions

References

Tables

Figures

⏪

⏩

◀

▶

Back

Close

Full Screen / Esc

Printer-friendly Version

Interactive Discussion



ture data. More physically-based approaches make use of the surface energy balance (SEB) to compute surface temperatures from air temperature, wind speed, humidity and incoming radiation (e.g. Zhang et al., 2013; Fiddes et al., 2013). In addition to accounting for more complex topography through spatially distributed fields of incoming radiation, the surface energy balance and thus the surface temperature can directly be connected to surface soil moisture and land cover/vegetation type which circumvents the use of n factors. On the other hand, SEB models require additional driving data sets, in particular incoming radiation, which must be compiled e.g. from large-scale atmospheric modeling (Fiddes and Gruber, 2014) and/or from sparse in-situ measurements (Zhang et al., 2012). Due to the potential for serious biases in such driving data sets in remote locations (such as Zackenberg), it must remain unclear whether the capacity of SEB models in reproducing the true surface temperature is superior to the simple empirical concept employed in this study.

5.2 Model uncertainty

The presented model results must be considered a first-order approximation on the future thermal state of the permafrost, which is subject to considerable uncertainty due to a variety of factors. Firstly, only one climate change scenario is considered, which does not account for the considerable spread in climate predictions. With permafrost approaching the thaw threshold at the end of this century for RCP 4.5 forcing, wide-spread permafrost degradation is e.g. likely for more aggressive climate change scenarios.

Secondly, the downscaling procedure from large-scale model data to high-resolution fields of temperature and snow depth is susceptible to uncertainties, since it assumes constant offsets between the two data sets based on the climate conditions of a seven-year reference period, which may not be justified for a one-hundred-year period. This is in particular critical since the temperature regime in the study area is characterized by strong inversion settings during a large part of the year (Meltofte et al., 2008). A modification of such inversions could lead to a different climate susceptibility of the study



Permafrost in NE
Greenland

S. Westermann et al.

Title Page

Abstract

Introduction

Conclusions

References

Tables

Figures



Back

Close

Full Screen / Esc

Printer-friendly Version

Interactive Discussion



area compared to the large-scale trend, which cannot be captured during the reference period. Furthermore, the future snow distribution patterns are based on random years from the seven-year reference period, implying that the patterns are unchanged in a warmer future climate and that the reference period allows a representative sample of the interannual variability within the rest of the century. It is not unlikely that both assumptions are violated at least to a certain degree. Furthermore, the CryoGrid 2 permafrost model assumes properties and relationships compiled and adjusted for the present state to be valid in the future. This concerns in particular the NDVI-based summer n factor relationship employed to derive surface from air temperatures (Sect. 3.1), as well the thermal properties of the snow and the ground stratigraphies. As an example, the snow density and thermal conductivity are likely to increase in a warmer climate, which would decrease the insulation of the winter snow cover and thus lead to colder temperatures as suggested by the model. Furthermore, constant soil water and ice contents are assumed, thus neglecting both seasonal and long-term changes in the water cycle. However, at least for the *Cassiope* class, our results for the future increase in maximum thaw depth are in good agreement with the study of Hollesen et al. (2011) who used the coupled heat and water transfer model COUP (Jansson and Karlberg, 2004) to simulate the ground thermal and moisture regimes in this century. Finally, new processes not accounted for by the modeling scheme might become relevant in the course of climate warming, e.g. the occurrence of wintertime rain events, which can lead to significant additional ground warming (Westermann et al., 2011).

5.3 From model results to permafrost landscape development

Most real-world applications of permafrost models assume non-interacting grid cells with spatially constant soil properties. Consequently, permafrost degradation in model studies (e.g. Westermann et al., 2013) is generally described as talik formation manifested in the temperature profile of a 1-D-grid cell. While such is indeed observed in instrumented boreholes, it can be accompanied by significant changes in the hydrological regime by thawing of hydrological barriers or the formation of new aquifers. Most

**Permafrost in NE
Greenland**

S. Westermann et al.

Title Page

Abstract

Introduction

Conclusions

References

Tables

Figures



Back

Close

Full Screen / Esc

Printer-friendly Version

Interactive Discussion



operational permafrost models are not capable of predicting such developments, which is a significant limitation for sound predictions on the permafrost carbon feedback. For the study area, Elberling et al. (2013) demonstrated that the potential CO₂ emissions from carbon-rich wetland soils strongly depend on the future hydrological regime of the wetland, with a drying of the wetland leading to significantly faster carbon turnover. Furthermore, thawing of excess ground ice can entirely modify the landscape, e.g. through thermokarst or thaw slumps, which can be hotspots of greenhouse gas emissions and thus modify the carbon budget of an entire permafrost landscape.

From the perspective of model development, a simple increase of the spatial resolution seems a prerequisite to resolve such shortcomings in the next generation of permafrost models. At a 10 m resolution, this study could capture two important aspects which can be seen as part of the “thermal signature” of the permafrost landscape in Zackenberg: (a) the differences in maximum thaw depth between different ecosystem classes, and (b) the spatial variability of ground temperatures to a large extent caused by spatially variable snow depths. Compared to large-scale (as in Daanen et al., 2011) or point-scale simulations (as in Hollesen et al., 2011), it provides a far more detailed (though still incomplete) assessment of the possible development of the Zackenberg permafrost landscape which can be better linked to studies on the future ecosystem carbon turnover (e.g. Elberling et al., 2013).

6 Conclusions

This study presents numerical simulations of present and future ground thermal conditions for a transect across the low-lying parts of the high-Arctic Zackenberg valley in NE Greenland. At the modeling scale of 10 m, the governing factors for the ground thermal regime are accounted for in a deterministic way. This involves snow depth (derived from a blowing snow model), ground properties (derived from an NDVI-based ecosystem classification) and surface properties (derived from empirical correction factors for summer surface temperature based on NDVI). Past and future climate trends

for the general area are derived from in-situ records and a Regional Climate Model. The following conclusions can be drawn from this study:

- The model approach can capture the measured differences in maximum thaw depth between different ecosystem classes encountered in the area. The simulated ground temperatures are in agreement with available borehole measurements.
- The modeled average ground temperatures increase by about 4 K until 2100, but generally remain below 0°C. However, a few model grid cells feature positive average 1 m temperatures in single years after 2060, which suggests that the thaw threshold could be reached at localized “weak” spots.
- The modeled maximum thaw depths increase moderately in all ecosystem classes, with the lowest value of 0.2 m for the wetland sites.
- The spatial variability of the average ground temperatures within a distance of a few kilometers is between 3 and 5 K and thus on the order of the projected increase of ground temperatures until the end of this century.

The study exemplifies that grid-based simulations at coarse scales with only one or few model realizations, as they are typical for the land-surface schemes of atmospheric models, cannot account for the spatial variability of the ground thermal regime in many permafrost areas. They are hence not capable of correctly predicting the onset of permafrost thaw which can trigger transformative landscape changes due to erosion and hydrological processes.

Acknowledgements. We gratefully acknowledge the financial support to this study from the Danish National Research Foundation (CENPERM DNR100), the European Union FP7-ENVIRONMENT project PAGE21 under contract no. GA282700 as well as the Faculty of Science at University of Copenhagen. Also, we extend our gratitude to the Greenland Ecosystem Monitoring (GEM) programme funded by the Danish Ministry for Climate, Energy and Building providing access to data. Finally, a warm thanks to staff from GeoBasis and BioBasis at Zackenberg Research Station and the students being involved in field measurements.

Permafrost in NE Greenland

S. Westermann et al.

Title Page

Abstract

Introduction

Conclusions

References

Tables

Figures



Back

Close

Full Screen / Esc

Printer-friendly Version

Interactive Discussion



References

- Bay, C.: Vegetation mapping of Zackenberg valley, Northeast Greenland, Danish Polar Center and Botanical Museum, University of Copenhagen, 29 pp., 1998. 3912, 3916
- Brown, J., Hinkel, K., and Nelson, F.: The circumpolar active layer monitoring (CALM) program: research designs and initial results, *Polar Geography*, 24, 166–258, 2000. 3911
- Christensen, J. H., Christensen, O. B., Lopez, P., van Meijgaard, E., and Botzet, M.: The HIRHAM 4 regional atmospheric climate model, Scientific Report, Danish Meteorological Institute, Copenhagen, Denmark, 96-4, 1996. 3910
- Clarke, L., Edmonds, J., Jacoby, H., Pitcher, H., Reilly, J., and Richels, R.: Scenarios of greenhouse gas emissions and atmospheric concentrations, Sub-report of Synthesis and Assessment Product – 2.1. Climate Change Science Program and the Subcommittee on Global Change Research, Washington DC, 2007. 3920
- Clauser, C. and Huenges, E.: Thermal conductivity of rocks and minerals, *AGU Reference Shelf*, 3, 105–126, 1995. 3914
- Cosenza, P., Guerin, R., and Tabbagh, A.: Relationship between thermal conductivity and water content of soils using numerical modelling, *Eur. J. Soil. Sci.*, 54, 581–588, 2003. 3914
- Côté, J. and Konrad, J.-M.: A generalized thermal conductivity model for soils and construction materials, *Can. Geotech. J.*, 42, 443–458, 2005. 3914
- Daanen, R. P., Ingeman-Nielsen, T., Marchenko, S. S., Romanovsky, V. E., Foged, N., Sten-
del, M., Christensen, J. H., and Hornbech Svendsen, K.: Permafrost degradation risk zone
assessment using simulation models, *The Cryosphere*, 5, 1043–1056, doi:10.5194/tc-5-
1043-2011, 2011. 3909, 3910, 3923, 3930
- Dall'Amico, M., Endrizzi, S., Gruber, S., and Rigon, R.: A robust and energy-conserving model
of freezing variably-saturated soil, *The Cryosphere*, 5, 469–484, doi:10.5194/tc-5-469-2011,
2011. 3914
- Elberling, B., Jakobsen, B. H., Berg, P., Søndergaard, J., and Sigsgaard, C.: Influence of veg-
etation, temperature, and water content on soil carbon distribution and mineralization in four
High Arctic soils, *Arct. Antarct. Alp. Res.*, 36, 528–538, 2004. 3911
- Elberling, B., Tamstorf, M. P., Michelsen, A., Arndal, M. F., Sigsgaard, C., Illeris, L., Bay, C.,
Hansen, B. U., Christensen, T. R., Hansen, E. S., Jakobsen, B. H., and Beyens, L.: Soil and
plant community-characteristics and dynamics at Zackenberg, *Adv. Ecol. Res.*, 40, 223–248,
2008. 3911, 3921

Title Page

Abstract

Introduction

Conclusions

References

Tables

Figures



Back

Close

Full Screen / Esc

Printer-friendly Version

Interactive Discussion



Title Page

Abstract

Introduction

Conclusions

References

Tables

Figures



Back

Close

Full Screen / Esc

Printer-friendly Version

Interactive Discussion



- Elberling, B., Christiansen, H. H., and Hansen, B. U.: High nitrous oxide production from thawing permafrost, *Nat. Geosci.*, 3, 332–335, 2010. 3908, 3911, 3918
- Elberling, B., Michelsen, A., Schädel, C., Schuur, E. A., Christiansen, H. H., Berg, L., Tamstorf, M. P., and Sigsgaard, C.: Long-term CO₂ production following permafrost thaw, *Nature Climate Change*, 3, 890–894, 2013. 3908, 3911, 3924, 3930
- Ellebjerg, S. M., Tamstorf, M. P., Illeris, L., Michelsen, A., and Hansen, B. U.: Inter-annual variability and controls of plant phenology and productivity at Zackenberg, *Adv. Ecol. Res.*, 40, 249–273, 2008. 3916
- Fiddes, J. and Gruber, S.: TopoSUB: a tool for efficient large area numerical modelling in complex topography at sub-grid scales, *Geosci. Model Dev.*, 5, 1245–1257, doi:10.5194/gmd-5-1245-2012, 2012. 3910
- Fiddes, J. and Gruber, S.: TopoSCALE v.1.0: downscaling gridded climate data in complex terrain, *Geosci. Model Dev.*, 7, 387–405, doi:10.5194/gmd-7-387-2014, 2014. 3910, 3928
- Fiddes, J., Endrizzi, S., and Gruber, S.: Large area land surface simulations in heterogeneous terrain driven by global datasets: application to mountain permafrost, *The Cryosphere Discuss.*, 7, 5853–5887, doi:10.5194/tcd-7-5853-2013, 2013. 3910, 3928
- Fredskild, B. and Mogensen, G. S.: Zero Line: Final Report 1997: a Description of the Plant Communities Along the ZERO Line from Young Sund to the Top of Aucellabjerg and the Common Plant Communities in the Zackenberg Valley, Northeast Greenland, Greenland Botanical Survey & Botanical Museum, University of Copenhagen, Copenhagen, Denmark, 1997. 3912
- Gisnås, K., Westermann, S., Schuler, T. V., Litherland, T., Isaksen, K., Boike, J., and Etzelmüller, B.: A statistical approach to represent small-scale variability of permafrost temperatures due to snow cover, *The Cryosphere Discuss.*, 8, 509–536, doi:10.5194/tcd-8-509-2014, 2014. 3909, 3927
- Goodrich, L.: The influence of snow cover on the ground thermal regime, *Can. Geotech. J.*, 19, 421–432, 1982. 3909
- Hansen, B. U., Sigsgaard, C., Rasmussen, L., Cappelen, J., Hinkler, J., Mernild, S. H., Petersen, D., Tamstorf, M. P., Rasch, M., and Hasholt, B.: Present-day climate at Zackenberg, *Adv. Ecol. Res.*, 40, 111–149, 2008. 3916
- Hazeleger, W., Severijns, C., Semmler, T., Stefanescu, S., Yang, S., Wang, X., Wyser, K., Dutra, E., Baldasano, J. M., Bintanja, R., Caballero, R., Dutra, E., Ekman, A., Christensen, J., van den Hurk, B., Jimenez, P., Jones, C., Kallberg, P., McGrath, R., de Miranda, P., Molteni, F.,

Permafrost in NE
Greenland

S. Westermann et al.

Title Page

Abstract

Introduction

Conclusions

References

Tables

Figures

◀

▶

◀

▶

Back

Close

Full Screen / Esc

Printer-friendly Version

Interactive Discussion



van Noije, T., Palmer, T., Rodriguez Camino, E., Schmith, T., Selten, T., Sterl, A., Tapamo, H., and Viterbo, P.: EC-earth: a seamless earth-system prediction approach in action, *B. Am. Meteorol. Soc.*, 91, 1357–1363, 2010. 3919

Hazeleger, W., Wang, X., Severijns, C., Ștefănescu, S., Bintanja, R., Sterl, A., Wyser, K., Semmler, T., Yang, S., Van den Hurk, B., van Noije, T., van der Linden, E., and van der Wiel, K.: EC-Earth V2. 2: description and validation of a new seamless earth system prediction model, *Clim. Dynam.*, 39, 2611–2629, 2012. 3919

Hinkler, J., Pedersen, S. B., Rasch, M., and Hansen, B. U.: Automatic snow cover monitoring at high temporal and spatial resolution, using images taken by a standard digital camera, *Int. J. Remote. Sens.*, 23, 4669–4682, 2002. 3921

Hipp, T., Etzelmüller, B., Farbrot, H., Schuler, T. V., and Westermann, S.: Modelling borehole temperatures in Southern Norway – insights into permafrost dynamics during the 20th and 21st century, *The Cryosphere*, 6, 553–571, doi:10.5194/tc-6-553-2012, 2012. 3915

Hock, R.: Temperature index melt modelling in mountain areas, *J. Hydrol.*, 282, 104–115, 2003. 3923

Hollesen, J., Elberling, B., and Jansson, P. E.: Future active layer dynamics and carbon dioxide production from thawing permafrost layers in Northeast Greenland, *Glob. Change. Biol.*, 17, 911–926, 2011. 3911, 3918, 3929, 3930

Hugelius, G., Bockheim, J. G., Camill, P., Elberling, B., Grosse, G., Harden, J. W., Johnson, K., Jorgenson, T., Koven, C. D., Kuhry, P., Michaelson, G., Mishra, U., Palmtag, J., Ping, C.-L., O'Donnell, J., Schirrmeister, L., Schuur, E. A. G., Sheng, Y., Smith, L. C., Strauss, J., and Yu, Z.: A new data set for estimating organic carbon storage to 3 m depth in soils of the northern circumpolar permafrost region, *Earth Syst. Sci. Data*, 5, 393–402, doi:10.5194/essd-5-393-2013, 2013. 3910

Jacobsen, A. and Hansen, B. U.: Estimation of the soil heat flux/net radiation ratio based on spectral vegetation indexes in high-latitude Arctic areas, *Int. J. Remote. Sens.*, 20, 445–461, 1999. 3915

Jafarov, E. E., Marchenko, S. S., and Romanovsky, V. E.: Numerical modeling of permafrost dynamics in Alaska using a high spatial resolution dataset, *The Cryosphere*, 6, 613–624, doi:10.5194/tc-6-613-2012, 2012. 3909

Jansson, P. and Karlberg, L.: COUP manual: coupled heat and mass transfer model for soil-plant-atmosphere systems, Technical manual for the CoupModel, KTH Royal Institute of Technology, Stockholm, Sweden, 453 pp., 2004. 3929

Permafrost in NE
Greenland

S. Westermann et al.

Title Page

Abstract

Introduction

Conclusions

References

Tables

Figures



Back

Close

Full Screen / Esc

Printer-friendly Version

Interactive Discussion



- Klene, A. E., Nelson, F. E., Shiklomanov, N. I., and Hinkel, K. M.: The N-factor in natural landscapes: variability of air and soil-surface temperatures, Kuparuk river basin, Alaska, USA, *Arct. Antarct. Alp. Res.*, **33**, 140–148, 2001. 3916, 3943
- 5 Koch, L. and Haller, J.: Geological map of Clavering Ø (74 Ø 2), *Meddelelser om Grønland*, C. A. Reitzels Forlag, Copenhagen, Denmark, Bd. 18.3, 1965. 3914
- Langen, P., Mottram, R., Christensen, J., Boberg, F., Rodehacke, C., Stendel, M., Cappelen, J., van As, D., Ahlstrøm, A., Mortensen, J., Rysgaard, S., Petersen, D., Svendsen, K., and Aðalgeirsdóttir, G.: Estimating and understanding recent changes in the energy and freshwater budget for Godthåbsfjord catchment with a 5 km regional climate model, *J. Climate*, submitted, 2014. 3919
- 10 Lawrence, D. M., Slater, A. G., and Swenson, S. C.: Simulation of present-day and future permafrost and seasonally frozen ground conditions in CCSM4, *J. Climate*, **25**, 2207–2225, 2012. 3909
- Lehning, M., Völksch, I., Gustafsson, D., Nguyen, T. A., Stähli, M., and Zappa, M.: ALPINE3D: a detailed model of mountain surface processes and its application to snow hydrology, *Hydrol. Process.*, **20**, 2111–2128, 2006. 3910
- 15 Liston, G.: Interrelationships among snow distribution, snowmelt, and snow cover depletion: implications for atmospheric, hydrologic, and ecologic modeling, *J. Appl. Meteorol.*, **38**, 1474–1487, 1999. 3920
- 20 Liston, G. and Sturm, M.: A snow-transport model for complex terrain, *J. Glaciol.*, **44**, 498–516, 1998. 3920
- Liston, G. E.: Local advection of momentum, heat, and moisture during the melt of patchy snow covers, *J. Appl. Meteorol.*, **34**, 1705–1715, 1995. 3920
- Liston, G. E.: Representing subgrid snow cover heterogeneities in regional and global models, *J. Climate*, **17**, 1381–1397, 2004. 3927
- 25 Liston, G. E. and Elder, K.: A distributed snow-evolution modeling system (SnowModel), *J. Hydrometeorol.*, **7**, 1259–1276, 2006a. 3910, 3920
- Liston, G. E. and Elder, K.: A meteorological distribution system for high-resolution terrestrial modeling (MicroMet), *J. Hydrometeorol.*, **7**, 217–234, 2006b. 3910, 3920
- 30 Liston, G. E. and Hall, D. K.: An energy-balance model of lake-ice evolution, *J. Glaciol.*, **41**, 373–382, 1995. 3920
- Liston, G. E. and Hiemstra, C. A.: A simple data assimilation system for complex snow distributions (SnowAssim), *J. Hydrometeorol.*, **9**, 989–1004, 2008. 3920

- Liston, G. E. and Hiemstra, C. A.: The changing cryosphere: pan-arctic snow trends (1979–2009), *J. Climate*, 24, 5691–5712, 2011. 3927
- Liston, G. E. and Mernild, S. H.: Greenland freshwater runoff. Part I: A runoff routing model for glaciated and non-glaciated landscapes (HydroFlow), *J. Climate*, 25, 5997–6014, 2012. 3920
- Liston, G. E., Pielke, R. A., and Greene, E. M.: Improving first-order snow-related deficiencies in a regional climate model, *J. Geophys Res.-Atmos.*, 104, 19559–19567, 1999. 3927
- Liston, G. E., Haehnel, R. B., Sturm, M., Hiemstra, C. A., Berezovskaya, S., and Tabler, R. D.: Instruments and methods simulating complex snow distributions in windy environments using SnowTran-3D, *J. Glaciol.*, 53, 241–256, 2007. 3920
- Lucas-Picher, P., Wulff-Nielsen, M., Christensen, J. H., Aðalgeirsdóttir, G., Mottram, R., and Simonsen, S. B.: Very high resolution regional climate model simulations over Greenland: identifying added value, *J. Geophys Res.-Atmos.*, 117, doi:10.1029/2011JD016267, 2012. 3919
- Mastepanov, M., Sigsgaard, C., Dlugokencky, E. J., Houweling, S., Ström, L., Tamstorf, M. P., and Christensen, T. R.: Large tundra methane burst during onset of freezing, *Nature*, 456, 628–630, 2008. 3910
- Meltofte, H., Christensen, T. R., Elberling, B., Forchhammer, M. C., and Rasch, M.: High-arctic ecosystem dynamics in a changing climate, vol. 40, Elsevier Academic Press, London, UK, 2008. 3910, 3912, 3928
- Merzlaya, G., Stepanov, A., and Fedorov, A. Y.: Growing potatoes above the arctic circle, *Russian Agricultural Sciences*, 34, 373–376, 2008. 3908
- Mesinger, F., DiMego, G., Kalnay, E., Mitchell, K., Shafran, P. C., Ebisuzaki, W., Jovic, D., Woollen, J., Rogers, E., Berbery, E. H., Ek, B. M., Fan, Y., Grumbine, R., Higgins, W., Li, H., Lin, Y., Manikin, G., Parrish, D., and Shi, W.: North American regional reanalysis, *B. Am. Meteorol. Soc.*, 87, 343–360, 2006. 3920
- Mick, A. H. and Johnson, H. A.: Soil resources and agricultural development in Alaska, *Arctic*, 7, 236–248, 1954. 3908
- Mottram, R., Aðalgeirsdóttir, G., Boberg, F., Lucas-Picher, P., Stendel, M., Bøssing, O., and Christensen, J.: Reconstructing the Surface Mass Balance of the Greenland Ice Sheet with the Regional Climate Model HIRHAM5, *Ann. Glaciol.*, submitted, 2014. 3919
- Osterkamp, T. and Romanovsky, V.: Evidence for warming and thawing of discontinuous permafrost in Alaska, *Permafrost Periglac.*, 10, 17–37, 1999. 3914

**Permafrost in NE
Greenland**

S. Westermann et al.

Title Page

Abstract

Introduction

Conclusions

References

Tables

Figures

I◀

▶I

◀

▶

Back

Close

Full Screen / Esc

Printer-friendly Version

Interactive Discussion



Permafrost in NE
Greenland

S. Westermann et al.

Title Page

Abstract

Introduction

Conclusions

References

Tables

Figures



Back

Close

Full Screen / Esc

Printer-friendly Version

Interactive Discussion



- Rae, J. G. L., Aðalgeirsdóttir, G., Edwards, T. L., Fettweis, X., Gregory, J. M., Hewitt, H. T., Lowe, J. A., Lucas-Picher, P., Mottram, R. H., Payne, A. J., Ridley, J. K., Shannon, S. R., van de Berg, W. J., van de Wal, R. S. W., and van den Broeke, M. R.: Greenland ice sheet surface mass balance: evaluating simulations and making projections with regional climate models, *The Cryosphere*, 6, 1275–1294, doi:10.5194/tc-6-1275-2012, 2012. 3919
- Schuur, E., Bockheim, J., Canadell, J., Euskirchen, E., Field, C., Goryachkin, S., Hagemann, S., Kuhry, P., Lafleur, P., Lee, H., Mazhitova, G., Nelson, F., Rinke, A., Romanovsky, V., Shiklomanov, N., Tarnocai, C., Venevsky, S., Vogel, J., and Zimov, S.: Vulnerability of permafrost carbon to climate change: Implications for the global carbon cycle, *BioScience*, 58, 701–714, 2008. 3908
- Schuur, E. A., Vogel, J. G., Crummer, K. G., Lee, H., Sickman, J. O., and Osterkamp, T. E.: The effect of permafrost thaw on old carbon release and net carbon exchange from tundra, *Nature*, 459, 556–559, 2009. 3908
- Smith, S. J. and Wigley, T.: Multi-gas forcing stabilization with MiniCAM, *The Energ. J.*, 27, 373–392, 2006. 3920
- Soegaard, H., Nordstroem, C., Friberg, T., Hansen, B. U., Christensen, T. R., and Bay, C.: Trace gas exchange in a high-Arctic valley: 3. Integrating and scaling CO₂ fluxes from canopy to landscape using flux data, footprint modeling, and remote sensing, *Global Biogeochem. Cy.*, 14, 725–744, 2000. 3915
- Stendel, M., Romanovsky, V. E., Christensen, J. H., and Sazonova, T.: Using dynamical down-scaling to close the gap between global change scenarios and local permafrost dynamics, *Global Planet. Change*, 56, 203–214, 2007. 3909, 3923
- Tamstorf, M., Illeris, L., Hansen, B., and Wisz, M.: Spectral measures and mixed models as valuable tools for investigating controls on land surface phenology in high arctic Greenland, *BMC Ecology*, 7, 9, doi:10.1186/1472-6785-7-9, 2007. 3916
- Thomson, A. M., Calvin, K. V., Smith, S. J., Kyle, G. P., Volke, A., Patel, P., Delgado-Arias, S., Bond-Lamberty, B., Wise, M. A., Clarke, L. E., and Edmonds, J.: RCP4.5: a pathway for stabilization of radiative forcing by 2100, *Climatic Change*, 109, 77–94, 2011. 3920
- Vionnet, V., Brun, E., Morin, S., Boone, A., Faroux, S., Le Moigne, P., Martin, E., and Willemet, J.-M.: The detailed snowpack scheme Crocus and its implementation in SURFEX v7.2, *Geosci. Model Dev.*, 5, 773–791, doi:10.5194/gmd-5-773-2012, 2012. 3918
- Walker, D., Jia, G., Epstein, H., Raynolds, M., Chapin III, F., Copass, C., Hinzman, L., Knudson, J., Maier, H., Michaelson, G., Nelson, F., Ping, C., Romanovsky, V., and Shiklomanov,

Permafrost in NE
Greenland

S. Westermann et al.

Title Page

Abstract

Introduction

Conclusions

References

Tables

Figures



Back

Close

Full Screen / Esc

Printer-friendly Version

Interactive Discussion



N.: Vegetation-soil-thaw-depth relationships along a low-arctic bioclimate gradient, Alaska: synthesis of information from the ATLAS studies, *Permafrost Periglac.*, 14, 103–123, 2003. 3916, 3943

Walter, K., Zimov, S., Chanton, J., Verbyla, D., and Chapin III, F.: Methane bubbling from Siberian thaw lakes as a positive feedback to climate warming, *Nature*, 443, 71–75, 2006. 3910

Wang, S., Li, Z., and Wu, J.: The state of the art and new subjects of highway research in permafrost regions of China, *Journal of Glaciology and Geocryology*, 25, 471–476, 2003. 3908

Wang, S., Huang, X., and Hou, S.: Numerical analyses of pavement deformation and stress in permafrost regions, *Journal of Glaciology and Geocryology*, 28, 217–222, 2006. 3908

Westermann, S., Boike, J., Langer, M., Schuler, T. V., and Etzelmüller, B.: Modeling the impact of wintertime rain events on the thermal regime of permafrost, *The Cryosphere*, 5, 945–959, doi:10.5194/tc-5-945-2011, 2011. 3929

Westermann, S., Schuler, T. V., Gislås, K., and Etzelmüller, B.: Transient thermal modeling of permafrost conditions in Southern Norway, *The Cryosphere*, 7, 719–739, doi:10.5194/tc-7-719-2013, 2013. 3909, 3910, 3913, 3914, 3918, 3929

Winstral, A., Elder, K., and Davis, R. E.: Spatial snow modeling of wind-redistributed snow using terrain-based parameters, *J. Hydrometeorol.*, 3, 524–538, 2002. 3910

Wise, M., Calvin, K., Thomson, A., Clarke, L., Bond-Lamberty, B., Sands, R., Smith, S. J., Janetos, A., and Edmonds, J.: Implications of limiting CO₂ concentrations for land use and energy, *Science*, 324, 1183–1186, 2009. 3920

Yen, Y.-C.: Review of thermal properties of snow, ice and sea ice, *Cold Regions Research and Engineering Lab*, Hanover, NH, USA, 81–10, 1981. 3918

Zhang, Y.: Spatio-temporal features of permafrost thaw projected from long-term high-resolution modeling for a region in the Hudson Bay Lowlands in Canada, *Journal of Geophysical Research: Earth Surface*, 118, 542–552, 2013. 3910

Zhang, Y., Li, J., Wang, X., Chen, W., Sladen, W., Dyke, L., Dredge, L., Poitevin, J., McLennan, D., Stewart, H., Kowalchuk, S., Wu, W., Kershaw, P., and Brook, R. K.: Modelling and mapping permafrost at high spatial resolution in Wapusk National Park, Hudson Bay Lowlands, *Can. J. Earth Sci.*, 49, 925–937, 2012. 3910, 3928

Zhang, Y., Wang, X., Fraser, R., Olthof, I., Chen, W., McLennan, D., Ponomarenko, S., and Wu, W.: Modelling and mapping climate change impacts on permafrost at high spatial resolu-

TCD

8, 3907–3948, 2014

Permafrost in NE Greenland

S. Westermann et al.

Title Page

Abstract

Introduction

Conclusions

References

Tables

Figures



Back

Close

Full Screen / Esc

Printer-friendly Version

Interactive Discussion



Table 1. Sediment stratigraphies in CryoGrid 2, with volumetric fractions of the soil constituents and soil type for each layer given.

depth [m]	water/ice	mineral	organic	air	type
Fell					
0–3	0.05	0.6	0.0	0.35	sand
3–10	0.4	0.6	0.0	0.0	sand
> 10	0.03	0.97	0.0	0.0	sand
<i>Dryas</i>					
0–1	0.15	0.55	0.0	0.3	sand
1–10	0.4	0.6	0.0	0.0	sand
> 10	0.03	0.97	0.0	0.0	sand
<i>Cassiope heath</i>					
0–0.8	0.25	0.55	0.0	0.2	sand
0.8–10	0.4	0.6	0.0	0.0	sand
> 10	0.03	0.97	0.0	0.0	sand
Wetland					
0–0.6	0.5	0.45	0.05	0.0	silt
0.6–10	0.4	0.6	0.0	0.0	silt
> 10	0.03	0.97	0.0	0.0	sand

[Title Page](#)[Abstract](#)[Introduction](#)[Conclusions](#)[References](#)[Tables](#)[Figures](#)[I◀](#)[▶I](#)[◀](#)[▶](#)[Back](#)[Close](#)[Full Screen / Esc](#)[Printer-friendly Version](#)[Interactive Discussion](#)

Permafrost in NE
Greenland

S. Westermann et al.

Table 2. The five climate stations in Zackenberg used to provide MicroMet/SnowModel meteorological inputs.

station	altitude [m a.s.l.]	Time series	UTM Easting	UTM Northing
Main climate station	38	1996–present	513 382	8 264 743
M2	17	2003–present	513 058	8 264 019
M3 (Aucella)	410	2003–present	516 126	8 268 250
M6 (Dome)	1283	2006–2012	507 453	8 269 905
M7 (Stor Søndal)	145	2008–present	496 815	8 269 905

Title Page

Abstract

Introduction

Conclusions

References

Tables

Figures



Back

Close

Full Screen / Esc

Printer-friendly Version

Interactive Discussion



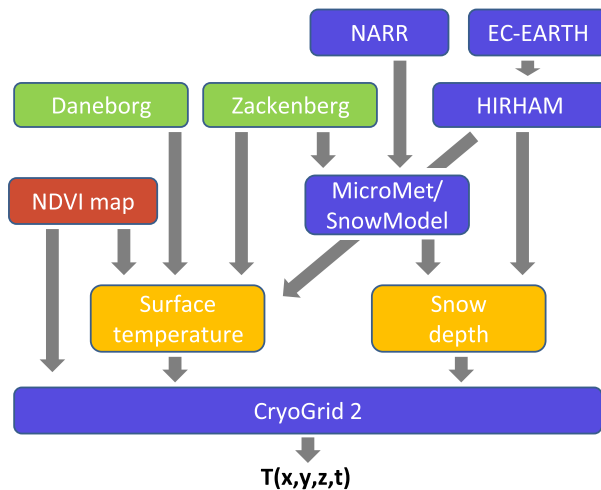


Figure 1. Schematic workflow of the modeling scheme depicting field data (green), remote sensing data (red), models (blue) and the principal forcing data (yellow) for the thermal model CryoGrid 2, delivering spatially resolved fields of ground temperatures. See text.

[Title Page](#)
[Abstract](#)
[Introduction](#)
[Conclusions](#)
[References](#)
[Tables](#)
[Figures](#)
[I◀](#)
[▶I](#)
[◀](#)
[▶](#)
[Back](#)
[Close](#)
[Full Screen / Esc](#)
[Printer-friendly Version](#)
[Interactive Discussion](#)


Permafrost in NE
Greenland

S. Westermann et al.

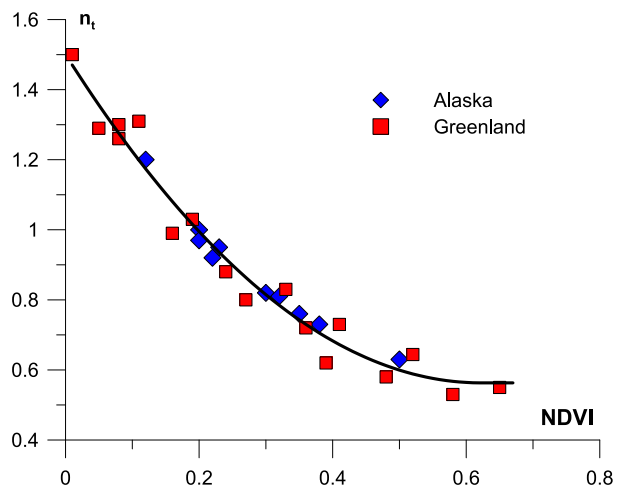


Figure 2. Summer n_t factor vs. NDVI based on in-situ measurements from Zackenberg and Kobbefjord in Greenland, as well as from Northern Alaska (Klene et al., 2001; Walker et al., 2003). The black line represents the fit following Eq. (3).

[Title Page](#)[Abstract](#)[Introduction](#)[Conclusions](#)[References](#)[Tables](#)[Figures](#)[◀](#)[▶](#)[◀](#)[▶](#)[Back](#)[Close](#)[Full Screen / Esc](#)[Printer-friendly Version](#)[Interactive Discussion](#)

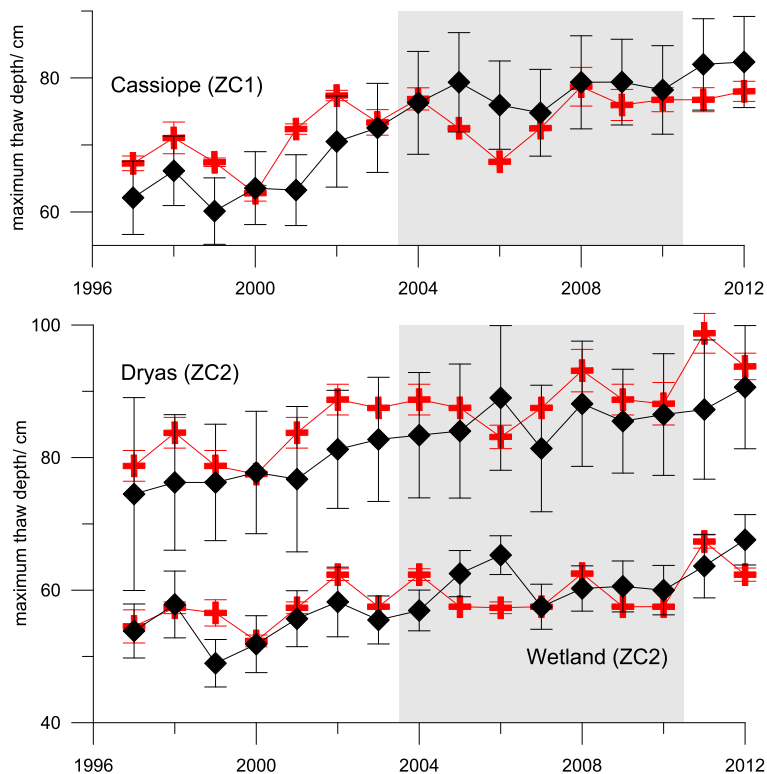


Figure 3. Modeled (red) and measured (black) maximum thaw depths for the classes Dryas, Cassiope and Wetland in ZeroCalm (ZC) 1 and 2. The period for which MicroMet/SnowModel data are available is shaded grey. The error bars correspond to the standard deviation of the model grid cells/ the in-situ CALM measurements.

Title Page	
Abstract	Introduction
Conclusions	References
Tables	Figures
◀	▶
◀	▶
Back	Close
Full Screen / Esc	
Printer-friendly Version	
Interactive Discussion	



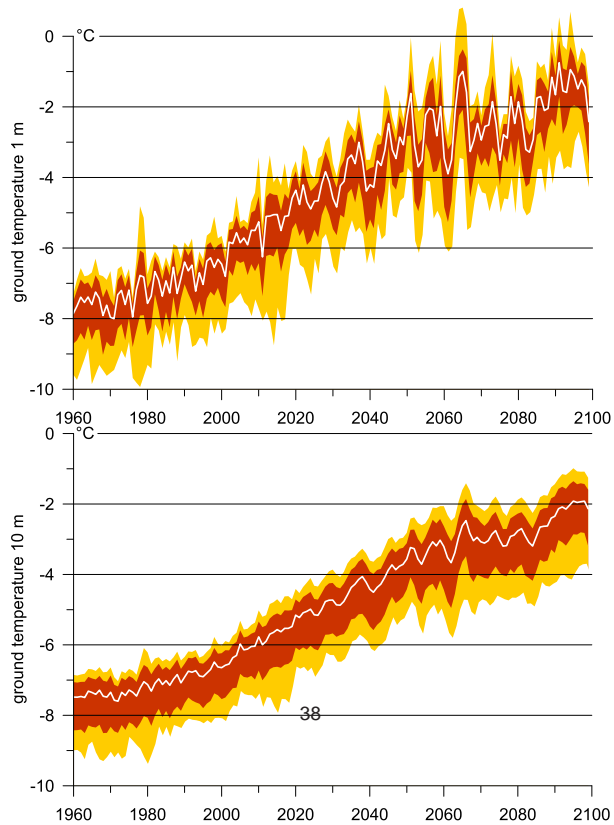


Figure 4. Evolution of annual average ground temperatures at 1 m (top) and 10 m (bottom) depth along ZERO-line until 2100. White line: average of all grid cells; Red: 25 and 75 % quartiles; yellow: minimum to maximum.

Title Page

Abstract

Introduction

Conclusions

References

Tables

Figures

◀

▶

◀

▶

Back

Close

Full Screen / Esc

Printer-friendly Version

Interactive Discussion



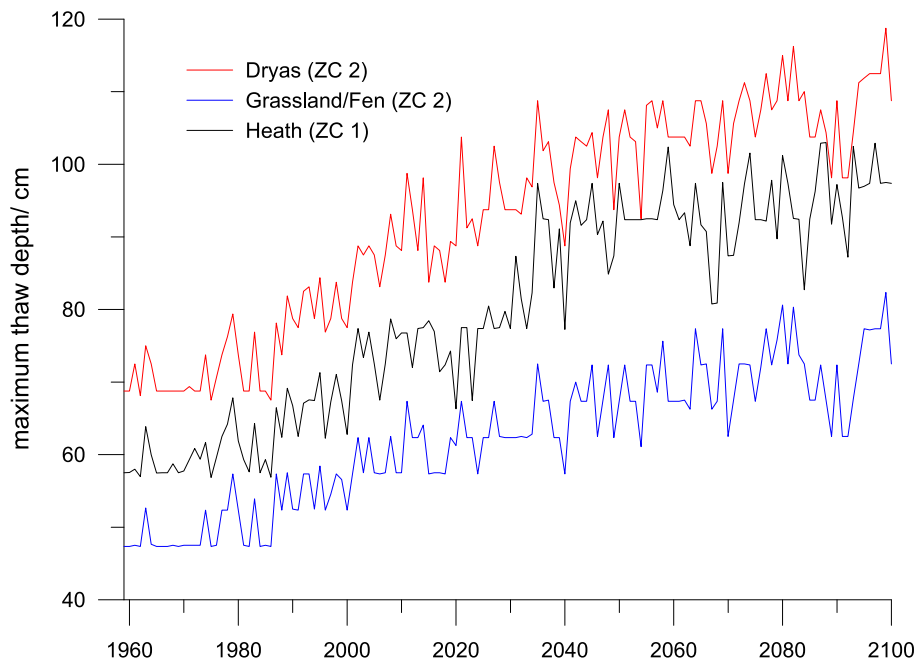


Figure 5. Evolution of annual maximum thaw depth until 2100 for the ecosystem classes Cas-siope (ZeroCalm 1), as well as Dryas and wetland (ZeroCalm 2).

Permafrost in NE Greenland

S. Westermann et al.

Title Page	
Abstract	Introduction
Conclusions	References
Tables	Figures
◀	▶
◀	▶
Back	Close
Full Screen / Esc	
Printer-friendly Version	
Interactive Discussion	



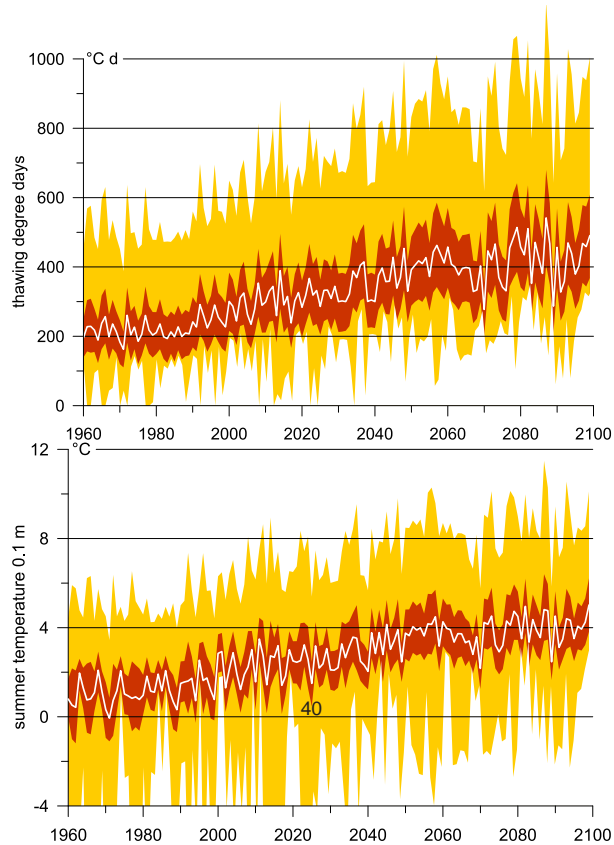


Figure 6. The distribution of thawing degree days (top) and average summer (June–August) temperatures (bottom) at 0.1 m depth along ZERO-line until 2100.

Title Page	
Abstract	Introduction
Conclusions	References
Tables	Figures
◀	▶
◀	▶
Back	Close
Full Screen / Esc	
Printer-friendly Version	
Interactive Discussion	



Permafrost in NE
Greenland

S. Westermann et al.

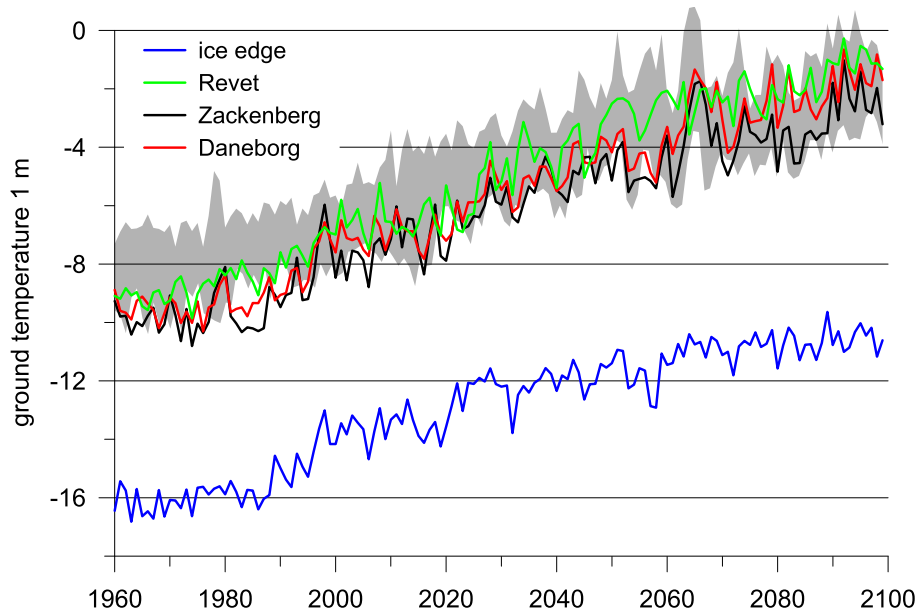


Figure 7. Evolution of yearly average ground temperatures at 1 m depth assuming the Cassiope heath ground stratigraphy for the ice edge site, Revet, Zackenberg and Daneborg. Grey area: range of the MicroMet/SnowModel-based simulations (minimum to maximum, Fig. 4).

[Title Page](#)[Abstract](#)[Introduction](#)[Conclusions](#)[References](#)[Tables](#)[Figures](#)[I◀](#)[▶I](#)[◀](#)[▶](#)[Back](#)[Close](#)[Full Screen / Esc](#)[Printer-friendly Version](#)[Interactive Discussion](#)