

This discussion paper is/has been under review for the journal The Cryosphere (TC).
Please refer to the corresponding final paper in TC if available.

The importance of insolation changes for paleo ice sheet modeling

A. Robinson^{1,2} and H. Goelzer³

¹Universidad Complutense de Madrid, 28040 Madrid, Spain

²Instituto de Geociencias, UCM-CSIC, 28040 Madrid, Spain

³Earth System Sciences & Departement Geografie, Vrije Universiteit Brussel, Brussels, Belgium

Received: 18 December 2013 – Accepted: 3 January 2014 – Published: 14 January 2014

Correspondence to: A. Robinson (robinson@fis.ucm.es)

Published by Copernicus Publications on behalf of the European Geosciences Union.

Insolation in paleo ice sheet modeling

A. Robinson and
H. Goelzer

Title Page

Abstract

Introduction

Conclusions

References

Tables

Figures

◀

▶

◀

▶

Back

Close

Full Screen / Esc

Printer-friendly Version

Interactive Discussion



effort needed for drilling, dynamic ice sheet modeling is the major source of information to constrain past ice sheet conditions and evolution.

Coupled climate-ice sheet simulations at high spatial resolution – needed to explicitly model ice-climate interactions – are largely not feasible on glacial-interglacial time scales. Therefore, a range of modeling strategies is currently applied to improve our understanding of ice sheet evolution during past climates. At one end of the spectrum are Regional Climate Models (RCMs) of high spatial resolution that include a full representation of the ice/snow–atmosphere interface (e.g. Helsen et al., 2013). However, RCMs must be forced at the lateral boundaries by output from past climate simulations with General Circulation Models (GCMs), which usually implies a fixed ice sheet surface elevation or strategies to circumvent this problem (e.g. Helsen et al., 2012; Edwards et al., 2013). Attempts have also been made to directly couple ice sheet models and GCMs (e.g. Fyke et al., 2011; Lipscomb et al., 2013), but the high computational demands of both RCMs and GCMs currently limit long-term transient simulations to those using asynchronous coupling (Helsen et al., 2013) or other interpolation strategies (e.g. Stone et al., 2013).

At the other end of the spectrum – and the focus of this paper – are modeling strategies that allow for full glacial-interglacial simulations. Currently, this requires reduced complexity and/or highly parameterized representations of some physical processes, in particular for the climate and the interface between the atmosphere/ocean and the ice sheet (e.g. Letreguilly et al., 1991; Ritz et al., 1997; Ganopolski and Calov, 2011; Robinson et al., 2011). Many paleo modeling studies parameterize ice-sheet surface melting as a function of temperature (e.g. Letreguilly et al., 1991; Ritz et al., 1997), by relying on the widely used Positive-Degree-Day (PDD) approach (Reeh, 1991). In this approach, insolation changes are not explicitly considered, which could lead to unwanted biases mainly during periods with higher than present-day insolation, as speculated by Robinson et al. (2010) and van de Berg et al. (2011). The two cited studies estimate the relative importance of insolation changes to be 45–50 % of the total melt anomaly by applying either a simplified energy-balance equation that includes the ef-

TCD

8, 337–362, 2014

Insolation in paleo ice sheet modeling

A. Robinson and
H. Goelzer

Title Page

Abstract

Introduction

Conclusions

References

Tables

Figures

◀

▶

◀

▶

Back

Close

Full Screen / Esc

Printer-friendly Version

Interactive Discussion



fect of insolation (Robinson et al., 2010) or a full RCM (van de Berg et al., 2011) for peak Eemian conditions. For the present study, we extend the analysis of insolation-related melt to the entire Eemian and Holocene (Sects. 2 and 3), and derive a general parameterization that can be used to correct for the melt contribution due to insolation changes in melt models that lack that component (Sects. 4 and 5).

2 Melt equations

In order to be able to derive analytical estimates of the contribution of insolation anomalies to total melt, we use a simplified energy-balance equation for melt that includes contributions from insolation and temperature (van den Berg et al., 2008; Robinson et al., 2010). The insolation-temperature melt (ITM) equation approximates the melt rate, M , as

$$M = [\tau_a (1 - \alpha_s) S + c + \lambda T] \frac{\Delta t}{\rho_w L_m}. \quad (1)$$

In the first term, S is the incoming solar radiation at the top of the atmosphere, τ_a is the atmospheric transmissivity and α_s is the surface albedo. The second term $c + \lambda T$ is a linear parameterization of the long-wave radiation and turbulent heat fluxes, where T is the daily mean temperature and λ and c are constants. The parameter $\lambda = 10$ is chosen such that it corresponds to a melt rate of 3 mm w.e. per degree, analogous to the typical choice of degree day factor for snow in the PDD approach (Reeh, 1991). c is used as a free parameter that depends on the region being modeled (van den Berg et al., 2008) and the representation of albedo (Robinson et al., 2010). Δt is the time step in seconds (in our case, one day), ρ_w is the density of water and L_m is the latent heat of melting.

The only two forcing variables in Eq. (1) are insolation and temperature, which is a great simplification of a full energy balance at the surface. Nonetheless, in most climatic scenarios at the continental scale, it can be assumed that this forcing carries

Insolation in paleo ice sheet modeling

A. Robinson and
H. Goelzer

Title Page

Abstract

Introduction

Conclusions

References

Tables

Figures

◀

▶

◀

▶

Back

Close

Full Screen / Esc

Printer-friendly Version

Interactive Discussion



the information necessary to represent the energy-balance well to the first order. In this context, such an equation is convenient because we can easily assess how a change in either insolation or temperature would affect the calculated melt. For example, by examination, it is clear that if insolation is held constant (e.g. at present-day levels), then its relative contribution to total melt will decrease asymptotically as temperatures become higher. Conversely, at low temperatures melt is determined more strongly by insolation.

Given equation Eq. (1) for the melt rate, which is a function of insolation, temperature, transmissivity and surface albedo, it is possible to isolate the influence of changing insolation on the estimated surface melt for any local conditions:

$$\begin{aligned} M_{\text{insol}} &= M(S, T, \tau_a, \alpha_s) - M(S_0, T, \tau_a, \alpha_s) \\ &= \frac{\Delta t}{\rho_w L_m} [\tau_a (1 - \alpha_s) (S - S_0)] \\ &= a \Delta t (S - S_0), \end{aligned} \quad (2)$$

where S_0 is the insolation fixed to present-day levels. If the surface albedo and atmospheric transmissivity are known, the value of a can be determined analytically: $a = \frac{1}{\rho_w L_m} \tau_a (1 - \alpha_s)$. However, all of these variables are typically not available in simple models. Assuming that over the ice sheet, τ_a is in the range of 0.5–0.7 (Robinson et al., 2010) and α_s is in the range of 0.4 (ice) to 0.8 (dry snow), a reasonable range for the coefficient a is $3\text{--}13 \times 10^{-10} \text{ m}^3 \text{ W}^{-1} \text{ s}^{-1}$. For a 1 W m^{-2} insolation anomaly over one month, the additional melt would be between 0.8–3.3 mm w.e., not counting any feedbacks.

3 Assessing the insolation-anomaly melt contribution

We performed two sets of experiments to assess the importance of insolation anomalies on melt – one set using the standard ITM model (referred to as the “full model”) and one set using the ITM model with insolation fixed to its present-day values (referred

Insolation in paleo ice sheet modeling

A. Robinson and
H. Goelzer

Title Page

Abstract

Introduction

Conclusions

References

Tables

Figures

◀

▶

◀

▶

Back

Close

Full Screen / Esc

Printer-friendly Version

Interactive Discussion



to as the “reduced model”). For these experiments, we held the Greenland ice sheet topography constant to its present-day distribution (no ice sheet model). Each transient simulation consisted of calculation of the surface melt over the Eemian (135–115 ka BP) and the Holocene (15–0 ka BP) interglacial periods. We also applied constant temperature anomalies of 1, 3 and 5 °C throughout the simulations. These idealized experiments help us to quantify each component of melt, whereas later we will show results from a realistic experimental setup with changing ice sheet geometry.

Figure 1 shows the time series of annual simulated Greenland ice sheet melt for several experiments. During peak Eemian conditions and for a 3 °C temperature anomaly, the melt predicted by the full model ($M(S)$) is ca. 30 % higher than the melt predicted when insolation is fixed to present day values ($M(S_0)$). However, this percentage depends strongly on the temperature anomaly, which is not well constrained for this time period. For 1 and 5 °C temperature anomalies, the percentage of melt due to insolation changes is 50 % and 20 %, respectively.

The insolation-anomaly melt contribution has a non-linear effect on the total melt via the albedo-melt feedback. To quantify the pure contribution of insolation changes to melt without this feedback, in each simulation using the full ITM model, we also simultaneously calculated the melt that would be predicted given present-day insolation. In this way, the melt in both cases is calculated given the same surface conditions (albedo, snowpack thickness) that evolve as determined by the full model. The difference between $M(S)$ and this synthetic melt ($M(S_0)_{full}$) is equal to the analytical contribution of insolation to melt (M_{insol}) from Eq. (2). Through this decomposition, we find that the albedo-melt feedback accounts for up to 30 % of the additional melt due to insolation, or 10 % of the total melt anomaly, in case of a 3 °C temperature anomaly.

Figure 2 shows the spatial distribution of melt anomalies at 126 ka BP given a 3 °C temperature anomaly. As expected, higher melt anomalies are found at lower surface elevations near the margins. However, the percentage of melt due to the insolation anomaly increases towards higher elevations, where temperatures are lower. In the interior of the ice sheet where temperatures are well below the freezing point, any small

Insolation in paleo ice sheet modeling

A. Robinson and
H. Goelzer

Title Page

Abstract

Introduction

Conclusions

References

Tables

Figures

◀

▶

◀

▶

Back

Close

Full Screen / Esc

Printer-friendly Version

Interactive Discussion



amount of additional melt that occurs is due to the insolation anomaly. In intermediate regions, particularly near the equilibrium line, the insolation anomaly plays an important role in increasing melt and thus, in further decreasing the albedo. It is there that the insolation-related melt anomaly has the largest absolute value.

4 Applying and testing a correction term

Having estimated the melt contribution due to insolation changes, we now derive a parameterization that may be used to correct melt models that do not already account for it. The additional contribution is formulated to vanish as the insolation anomaly approaches zero, which enables the use of a classical melt model without modification for the present day and the next few millennia, when insolation changes are small. This is useful because historically many paleo ice-sheet simulations rely on a PDD approach and could be corrected in a way consistent with previous simulations, rather than employing a different melt model (such as ITM) all together.

Our parameterization follows from Eq. (2), in that the insolation related melt M_{insol} is a function of the insolation anomaly multiplied by an empirical coefficient a and a time-step Δt . The coefficient a to the first order could be considered as a constant, representing average local conditions of surface albedo and atmospheric transmissivity for the ice sheet. In practice, however, such an approach leads to significant errors. Instead, we find that the surface conditions must be taken into account in the formulation of a .

By solving for a in Eq. (2),

$$a = \frac{M(S, T, \tau_a, \alpha_s) - M(S_0, T, \tau_a, \alpha_s)}{\Delta t(S - S_0)}, \quad (3)$$

we were able to diagnose the empirical model value of a for each point on the ice sheet and each month. We obtained the melt terms $M(S)$ and $M(S_0)_{\text{full}}$ above by performing melt calculations with the full ITM model and, with the same surface conditions, the

Insolation in paleo ice sheet modeling

A. Robinson and
H. Goelzer

[Title Page](#)[Abstract](#)[Introduction](#)[Conclusions](#)[References](#)[Tables](#)[Figures](#)[◀](#)[▶](#)[◀](#)[▶](#)[Back](#)[Close](#)[Full Screen / Esc](#)[Printer-friendly Version](#)[Interactive Discussion](#)

reduced ITM model (with present-day insolation). Figure 3 shows a calculated from this approach for each month as a function of temperature. These results indicate that a cannot be taken as a constant, but must contain some seasonal variation. Furthermore, a high correlation between this variation and local temperature exists because the near-surface temperature acts as a first-order proxy of local surface conditions (albedo), and thus of how much insolation can be absorbed at different times in the year.

To better capture this local variability without introducing additional variables, we parameterize the coefficient a as a function of the local mean daily temperature (T) and the day of the year (d):

$$M_{\text{insol}} = a(T, d)\Delta t(S - S_0), \quad (4)$$

where $a(T, d)$ is a piecewise linear function of T :

$$a = \begin{cases} 0, & \text{if } T \leq T_{\min} \\ a_{\max} \frac{(T - T_{\min})}{(T_{\max} - T_{\min})}, & \text{if } T_{\min} < T < T_{\max} \\ a_{\max}, & \text{if } T \geq T_{\max}. \end{cases} \quad (5)$$

The values of a_{\max} and T_{\max} were chosen to be constant for simplicity. T_{\min} was parameterized as a non-linear sinusoidal function of the time of year between T_{\max} in winter and $T_{\min, \text{sum}}$ in summer (Fig. 4):

$$T_{\min} = T_{\max} - (T_{\max} - T_{\min, \text{sum}}) \left(\frac{1 - \cos\left(2\pi \frac{d}{365}\right)}{2} \right)^p \quad (6)$$

This formulation follows from the non-linear relationship of local conditions to temperature during different seasons. Figure 4 shows how T_{\min} changes over the year according to Eq. (6). This is compared with the T -intercept of a linear fit to each month of values in the range $0 < a < a_{\max}$, which indicates that our parameterization reproduces the seasonal change in the value of T_{\min} well. The values of a_{\max} , T_{\max} , $T_{\min, \text{sum}}$ and the

Insolation in paleo ice sheet modeling

A. Robinson and H. Goelzer

Title Page

Abstract

Introduction

Conclusions

References

Tables

Figures



Back

Close

Full Screen / Esc

Printer-friendly Version

Interactive Discussion



exponent p were optimized to best match the diagnosed values of a shown in Fig. 3. See Table 1 for the parameter values used here.

Defining a as a function of temperature and season allows us to capture a large part of its variability (Fig. 3). The relationship is most robust at the start of the melt season, which is more important for the initiation of melt and thus for propagating albedo-melt feedbacks throughout the year. The parameterization does show deficiencies in the later part of the melt season (e.g., July and August) when the clear relationship between a and temperature breaks down somewhat. During this time, the surface in different locations has had time to evolve in a more complex response to the forcing than can be captured by the parameterization. In effect, the coefficient a is acting as a substitute for a full surface albedo model, based on the idea that a simple melt model would not have this term available. A more complex approach that better captures the evolution of the surface conditions would be outside the scope of this first order correction term.

We would like to know if such a correction term can be applied in a melt model that does not account for changes in insolation, such as the PDD approach. To be able to compare our results consistently, we assume that the reduced ITM model, in which insolation is fixed to present day, can be used to represent melt from such an approach. This is justified because this model has previously been shown to have a similar sensitivity to climatic changes as the PDD approach given present-day insolation (Robinson et al., 2010).

Based on the above derivation, we use M_{insol} from Eq. (4) to provide a first-order correction to the melt estimated by the reduced-ITM model for different orbital conditions, such that the corrected melt is estimated as

$$M_{\text{corr}} = M(S_0) + M_{\text{insol}}. \quad (7)$$

Figure 5 shows the transient melt anomaly analogous to the middle panels of Fig. 1, now including results using the corrected melt estimate from Eq. (7). Overall, the melt correction functions as expected. Both entering and leaving the Eemian interglacial, the corrected melt is slightly overestimated compared with the full model. This implies

Insolation in paleo ice sheet modeling

A. Robinson and
H. Goelzer

[Title Page](#)[Abstract](#)[Introduction](#)[Conclusions](#)[References](#)[Tables](#)[Figures](#)[◀](#)[▶](#)[◀](#)[▶](#)[Back](#)[Close](#)[Full Screen / Esc](#)[Printer-friendly Version](#)[Interactive Discussion](#)

Insolation in paleo ice sheet modeling

A. Robinson and
H. Goelzer

Title Page

Abstract

Introduction

Conclusions

References

Tables

Figures

◀

▶

◀

▶

Back

Close

Full Screen / Esc

Printer-friendly Version

Interactive Discussion



that our formulation of a is too simplistic to fully capture the surface conditions during intermediate transition periods. Nonetheless, the corrected melt is able to reproduce the full model's melt very well. Particularly, the rate of increase in melt as the interglacial intensifies, as well as the timing and magnitude of peak melt, are consistent with the full model. There is more uncertainty for peak interglacial conditions, as this is when the model has the most freedom to evolve.

We performed several simulations with different values of $T_{\min, \text{sum}}$ as a sensitivity study of the correction term. We only modified $T_{\min, \text{sum}}$ as it was found to have the most influence on the results, while the remaining tunable parameters (a_{\max} , T_{\max} , ρ) have only a secondary effect (not shown). The main impact of $T_{\min, \text{sum}}$ is to modulate the magnitude of the correction. Because the insolation correction term is only nonzero above the value of T_{\min} , as $T_{\min, \text{sum}}$ increases, the term's contribution to total melt decreases. We find that a value of $T_{\min, \text{sum}}$ in the range of -15°C to -12°C approximates the contribution of insolation well, with an optimal value of $T_{\min, \text{sum}} = -14^{\circ}\text{C}$.

Figure 6 compares the performance of the reduced melt model with that of the corrected model for peak Eemian insolation. While the reduced model is able to reproduce the full model results in the interior of the ice sheet (where melt is essentially zero), it underestimates the annual melt by up to 400 mm further out towards the margins. The maximum error in melt appears in the intermediate elevations, as insolation becomes less important at lower elevations with higher temperatures. Given a total melt anomaly of between 500–2000 mm (see Fig. 2) in these regions, it is clear that a model that does not account for insolation changes would significantly underestimate melt during this time period. Furthermore, it can be seen that the reduced model shows the equilibrium line elevation to be much lower than that of the full model in several regions. This means that the full model has a significantly wider ablation zone.

Conversely, the corrected melt model reduces this error to well below 50 mm in most regions. Only a few spurious points are not well corrected, which is a result of a small equilibrium line shift compared to the full model. In regions that do experience a significant amount of melt, at intermediate elevations and towards the margins, the corrected

melt model compares very well with the full model. While this may be expected from the analytical derivation, the result is encouraging since it shows that the proposed formulation of a captures the effect of changing surface conditions sufficiently well.

5 Fully coupled transient simulations

To understand the impact of insolation changes on the evolution of the ice sheet geometry, as well as to further test the ability of the new parameterization, we performed transient simulations using the fully coupled model REMBO-SICOPOLIS (Robinson et al., 2010, 2011). In this setup, the climate model REMBO is driven in the same way as above, but now by a transient time series of temperature anomalies as well (Fig. 7).

The temperature anomalies were obtained from a transient global climate simulation of the last several glacial cycles (Ganopolski and Calov, 2011). The SMB calculated in REMBO is used to drive the ice sheet model SICOPOLIS (Greve, 1997). As before, the full version of the melt model is used ($M(S)$), along with the reduced version ($M(S_0)$) with insolation fixed to present day and the corrected version (M_{corr}).

In all simulations, the ice sheet steadily grows entering the Eemian (Fig. 7) due to increased precipitation and low temperature anomalies. Its growth slows as the temperature anomaly becomes positive, and it begins to lose mass after peak climatic conditions are reached. It slowly regrows several kiloyears later under lower temperatures, with the timing of recovery depending on the amount of volume lost. Using the full melt model, the ice-sheet volume decreases about 25 % relative to present day, with the minimum volume at 122 kaBP. In contrast, the reduced model gives a volume reduction of just 8 % and faster regrowth, reaching its minimum volume earlier between 123–124 kaBP. There is less variation during the Holocene, largely due to the near-zero temperature anomalies applied in these simulations. Still the full model produces somewhat more melt as peak Holocene conditions are reached, leading to a smaller volume of the ice sheet throughout the Holocene as well.

Insolation in paleo ice sheet modeling

A. Robinson and
H. Goelzer

Title Page

Abstract

Introduction

Conclusions

References

Tables

Figures

◀

▶

◀

▶

Back

Close

Full Screen / Esc

Printer-friendly Version

Interactive Discussion



Insolation in paleo ice sheet modeling

A. Robinson and
H. Goelzer

Title Page

Abstract

Introduction

Conclusions

References

Tables

Figures

◀

▶

◀

▶

Back

Close

Full Screen / Esc

Printer-friendly Version

Interactive Discussion



In these fully coupled simulations, the corrected melt model produces ice loss almost indistinguishable from that of the full model. The additional melt provided from the insolation correction term results in significantly more ice loss throughout both the Eemian and the Holocene compared to the reduced model. Particularly, the magnitude of ice loss and the timing of the minimum and regrowth are well reproduced by the corrected model. Different values of $T_{\min, \text{sum}}$ perform as expected, with higher parameter values corresponding to less volume reduction throughout the Eemian. The uncertainty is reduced significantly during the Holocene, given the lack of such extreme climatic forcing.

The corrected model also simulates a spatial distribution of ice loss on Greenland that is very similar to that of the full model (Fig. 8). When the minimum volume is reached during the Eemian, the corrected model shows the same pattern of ice loss everywhere, and particularly in the more sensitive northwest and southwest regions. The consistency of these results further strengthens our confidence in the ability of our formulation of a to properly account for changing surface conditions, since in a coupled setup, small differences can compound into larger errors.

6 Discussion

Using the ITM equation, we were able to derive an analytical expression for the insolation-anomaly contribution given local albedo, transmissivity, temperature and insolation. As these variables are not always available in reduced complexity melt models, we further parameterized the coefficient a (that encapsulates the contribution of local conditions) as a function of temperature. This is, of course, a great simplification compared to a full surface albedo model. Because the local temperature provides a relatively consistent (albeit crude) picture of the surface conditions, it works well to represent the albedo-melt feedback in the correction term.

Our approach should be valid over all paleoclimatic conditions, since it accounts for the local insolation anomaly and the local surface conditions (via a). It has only been

Insolation in paleo ice sheet modeling

A. Robinson and
H. Goelzer

Title Page

Abstract

Introduction

Conclusions

References

Tables

Figures

◀

▶

◀

▶

Back

Close

Full Screen / Esc

Printer-friendly Version

Interactive Discussion



tested during periods warmer than today, however during glacial periods, melt on the ice sheet reduces to zero, making such a test inconsequential. Still, our formulation allows for a negative contribution from insolation when it is lower than today. As seen for the latter part of the Eemian in Fig. 5, when the local insolation anomaly decreases faster than the temperature anomaly, including the negative contribution to melt from insolation makes the overall melt anomaly decline more rapidly. Such transient behavior could have important implications concerning the regrowth of ice sheets after an interglacial period.

As the ITM model cannot capture the full complexity of the surface energy balance of the ice sheet, our analysis can only provide a first order estimate of insolation's role in paleo melting. However, given the inherent simplicity of reduced melt models such as PDD, the estimates here should be good enough to allow improvement to be made. The application of full energy-balance models in transient experiments would allow us to refine our understanding further of how ice-sheet melting may have differed during paleoclimatic conditions.

Nonetheless, it is clear that the contribution of insolation changes to melt is intimately linked to the temperature anomaly experienced at the same time. This link is tightly coupled, because an increase in either term causes a reduction in albedo and therefore leads to a increase in melt. As found by previous studies (e.g., Fitzgerald et al., 2012), the representation of albedo is a critical component of melt and surface mass balance modeling. Here we also find that it is necessary to incorporate at least a simple treatment of albedo, in order to properly simulate the changes in the snowpack.

Ignoring the insolation effect is a systematic error that is especially important when modeling the transient glacial–interglacial cycle and when quantitatively comparing the Eemian and the present day. Our analysis shows that this effect is indeed important, both for equilibrium estimates of surface mass balance and especially for simulating the transient evolution of the ice sheet.

If the correction term presented here is incorporated into reduced complexity models, such as PDD, it should then be possible to tune the insolation-independent parameters

from present-day data, while relying on the insolation term to handle changes in paleo conditions. Such an approach could help to better constrain the range of melt model parameters to realistic values.

7 Conclusions

5 We have quantified the relative importance of insolation changes to surface melt and its evolution during Eemian and Holocene conditions using a simplified energy-balance model. Its impact is highest for peak Eemian and Holocene conditions and decreases with decreasing insolation. Our results are consistent with those of Robinson et al. (2011) and van de Berg et al. (2011), who found a contribution around 50% due to
10 higher insolation during peak Eemian conditions. However, its relative impact on total melt depends on the temperature anomaly. Locally and for a given insolation, its contribution to melt is relatively more important for colder surface conditions.

15 Additionally, we find that the contribution of insolation to melt is non-linearly dependent on temperature as feedbacks between temperature, melting and albedo modify the ice sheet surface conditions. Spatially, the relative importance of insolation is largest in the cold accumulation zone and decreases towards the ice sheet margin, where the effect of temperature is dominant. The largest impact on the snowpack can be seen near the equilibrium line, as this is where an additional melt contribution can most strongly modify the surface conditions through the albedo-melt feedback. In simulations where the surface mass balance is coupled with a dynamic ice sheet model,
20 the additional melt due to insolation and associated feedbacks can cause a significantly larger reduction in ice sheet volume during the Eemian. This highlights the need to account for insolation changes in paleo ice sheet modeling.

25 Based on this analysis, we have presented a simple parameterization that can be used to correct for the effect of insolation changes in models that do not explicitly account for them. The provided parameterization assumes an additional melt contribution due to insolation anomalies as a function of temperature and season. It also implies

TCD

8, 337–362, 2014

Insolation in paleo ice sheet modeling

A. Robinson and
H. Goelzer

Title Page

Abstract

Introduction

Conclusions

References

Tables

Figures

◀

▶

◀

▶

Back

Close

Full Screen / Esc

Printer-friendly Version

Interactive Discussion



that a given melt model will not be modified for present-day insolation, and thus consistency can be maintained with previous work. The new parameterization has been shown to give good results when used to correct the melt calculations of a fully coupled ice-climate model simulation that does not explicitly account for insolation changes.

- 5 *Acknowledgements.* A. Robinson was funded by project CGL2011-29672-C02-01 (Gobierno de España, Ministerio de Economía y Competitividad) and the Marie Curie 7th framework programme. H. Goelzer was funded by the Belgian Federal Science Policy Office within its Research Programme on Science for a Sustainable Development under contract SD/CS/06A (iCLIPS).

10 References

- Bakker, P., Stone, E. J., Charbit, S., Gröger, M., Krebs-Kanzow, U., Ritz, S. P., Varma, V., Khon, V., Lunt, D. J., Mikolajewicz, U., Prange, M., Renssen, H., Schneider, B., and Schulz, M.: Last interglacial temperature evolution – a model inter-comparison, *Clim. Past*, 9, 605–619, doi:10.5194/cp-9-605-2013, 2013. 338
- 15 Edwards, T. L., Fettweis, X., Gagliardini, O., Gillet-Chaulet, F., Goelzer, H., Gregory, J. M., Hoffman, M., Huybrechts, P., Payne, A. J., Perego, M., Price, S., Quiquet, A., and Ritz, C.: Effect of uncertainty in surface mass balance–elevation feedback on projections of the future sea level contribution of the Greenland ice sheet – Part 1: Parameterisation, *The Cryosphere Discuss.*, 7, 635–674, doi:10.5194/tcd-7-635-2013, 2013. 339
- 20 Fitzgerald, P. W., Bamber, J. L., Ridley, J. K., and Rougier, J. C.: Exploration of parametric uncertainty in a surface mass balance model applied to the Greenland ice sheet, *J. Geophys. Res.*, 117, F01021, doi:10.1029/2011JF002067, 2012. 349
- Fyke, J. G., Weaver, A. J., Pollard, D., Eby, M., Carter, L., and Mackintosh, A.: A new coupled ice sheet/climate model: description and sensitivity to model physics under Eemian, Last Glacial Maximum, late Holocene and modern climate conditions, *Geosci. Model Dev.*, 4, 117–136, doi:10.5194/gmd-4-117-2011, 2011. 339
- 25 Ganopolski, A. and Calov, R.: The role of orbital forcing, carbon dioxide and regolith in 100 kyr glacial cycles, *Clim. Past*, 7, 1415–1425, doi:10.5194/cp-7-1415-2011, 2011. 339, 347

Insolation in paleo ice sheet modeling

A. Robinson and
H. Goelzer

Title Page

Abstract

Introduction

Conclusions

References

Tables

Figures



Back

Close

Full Screen / Esc

Printer-friendly Version

Interactive Discussion



Insolation in paleo ice sheet modeling

A. Robinson and
H. Goelzer

Title Page

Abstract

Introduction

Conclusions

References

Tables

Figures

◀

▶

◀

▶

Back

Close

Full Screen / Esc

Printer-friendly Version

Interactive Discussion



- Ganopolski, A. and Robinson, A.: Palaeoclimate: the past is not the future, *Nat. Geosci.*, 4, 661–663, doi:10.1038/ngeo1268, 2011. 338
- Greve, R.: A continuum–mechanical formulation for shallow polythermal ice sheets, *Philos. T. Roy. Soc. A*, 355, 921–974, doi:10.1098/rsta.1997.0050, 1997. 347
- 5 Helsen, M. M., van de Wal, R. S. W., van den Broeke, M. R., van de Berg, W. J., and Oerlemans, J.: Coupling of climate models and ice sheet models by surface mass balance gradients: application to the Greenland Ice Sheet, *The Cryosphere*, 6, 255–272, doi:10.5194/tc-6-255-2012, 2012. 339
- Helsen, M. M., van de Berg, W. J., van de Wal, R. S. W., van den Broeke, M. R., and Oerlemans, J.: Coupled regional climate–ice-sheet simulation shows limited Greenland ice loss during the Eemian, *Clim. Past*, 9, 1773–1788, doi:10.5194/cp-9-1773-2013, 2013. 339
- 10 Letreguilly, A., Huybrechts, P., and Reeh, N.: Steady-state characteristics of the Greenland ice sheet under different climates, *J. Glaciol.*, 37, 149–157, 1991. 339
- Lipscomb, W. H., Fyke, J. G., Vizcaino, M., Sacks, W. J., Wolfe, J., Vertenstein, M., Craig, A., Kluzek, E., and Lawrence, D. M.: Implementation and initial evaluation of the Glimmer community ice sheet model in the community Earth system model, *J. Climate*, 26, 7352–7371, 2013. 339
- 15 Lunt, D. J., Abe-Ouchi, A., Bakker, P., Berger, A., Braconnot, P., Charbit, S., Fischer, N., Herold, N., Jungclaus, J. H., Khon, V. C., Krebs-Kanzow, U., Langebroek, P. M., Lohmann, G., Nisancioglu, K. H., Otto-Bliesner, B. L., Park, W., Pfeiffer, M., Phipps, S. J., Prange, M., Rachmayani, R., Renssen, H., Rosenbloom, N., Schneider, B., Stone, E. J., Takahashi, K., Wei, W., Yin, Q., and Zhang, Z. S.: A multi-model assessment of last interglacial temperatures, *Clim. Past*, 9, 699–717, doi:10.5194/cp-9-699-2013, 2013. 338
- NEEM Community Members: Eemian interglacial reconstructed from a Greenland folded ice core, *Nature*, 493, 489–494, doi:10.1038/nature11789, 2013. 338
- 25 Reeh, N.: Parameterization of melt rate and surface temperature on the Greenland ice sheet, *Polarforschung*, 59, 113–128, 1991. 339, 340
- Ritz, C., Fabre, A., and Letreguilly, A.: Sensitivity of a Greenland ice sheet model to ice flow and ablation parameters: consequences for the evolution through the last climatic cycle, *Clim. Dynam.*, 13, 11–23, 1997. 339
- 30 Robinson, A., Calov, R., and Ganopolski, A.: An efficient regional energy-moisture balance model for simulation of the Greenland Ice Sheet response to climate change, *The Cryosphere*, 4, 129–144, doi:10.5194/tc-4-129-2010, 2010. 339, 340, 341, 345, 347

**Insolation in paleo
ice sheet modeling**A. Robinson and
H. Goelzer

Title Page

Abstract

Introduction

Conclusions

References

Tables

Figures

◀

▶

◀

▶

Back

Close

Full Screen / Esc

Printer-friendly Version

Interactive Discussion



Robinson, A., Calov, R., and Ganopolski, A.: Greenland ice sheet model parameters constrained using simulations of the Eemian Interglacial, *Clim. Past*, 7, 381–396, doi:10.5194/cp-7-381-2011, 2011. 339, 347, 350

Stone, E. J., Lunt, D. J., Annan, J. D., and Hargreaves, J. C.: Quantification of the Greenland ice sheet contribution to Last Interglacial sea level rise, *Clim. Past*, 9, 621–639, doi:10.5194/cp-9-621-2013, 2013. 339

van den Berg, J., van de Wal, R., and Oerlemans, H.: A mass balance model for the Eurasian Ice Sheet for the last 120,000 yr, *Global Planet. Change*, 61, 194–208, doi:10.1016/j.gloplacha.2007.08.015, 2008. 340

van de Berg, W. J., van den Broeke, M., Ettema, J., van Meijgaard, E., and Kaspar, F.: Significant contribution of insolation to Eemian melting of the Greenland ice sheet, *Nat. Geosci.*, 4, 1–5, doi:10.1038/ngeo1245, 2011. 339, 340, 350

Vinther, B. M., Buchardt, S. L., Clausen, H. B., Dahl-Jensen, D., Johnsen, S. J., Fisher, D. A., Koerner, R. M., Raynaud, D., Lipenkov, V., Andersen, K. K., Blunier, T., Rasmussen, S. O., Steffensen, J. P., and Svensson, A. M.: Holocene thinning of the Greenland ice sheet, *Nature*, 461, 385–388, 2009. 338

TCD

8, 337–362, 2014

Insolation in paleo ice sheet modeling

A. Robinson and
H. Goelzer

Title Page

Abstract

Introduction

Conclusions

References

Tables

Figures

◀

▶

◀

▶

Back

Close

Full Screen / Esc

Printer-friendly Version

Interactive Discussion

**Table 1.** Optimal parameter values for Eqs. (5) and (6).

| Parameter | Units | Best value |
|------------------------|--|-----------------------|
| a_{\max} | $\text{m}^3 \text{W}^{-1} \text{s}^{-1}$ | 8.2×10^{-10} |
| T_{\max} | $^{\circ}\text{C}$ | 4.0 |
| $T_{\min, \text{sum}}$ | $^{\circ}\text{C}$ | -14.0 |
| ρ | – | 1.3 |

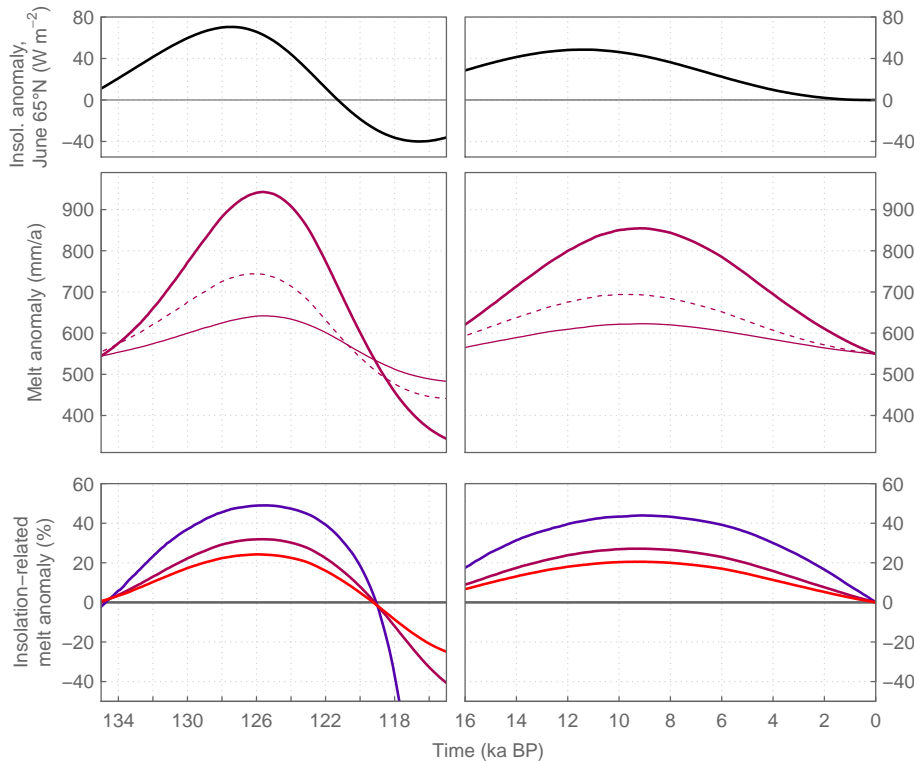


Fig. 1. Melt anomalies relative to present day for the Eemian (left) and the Holocene (right). Top: June insolation anomaly at $65^{\circ}N$. Middle: melt anomalies given a constant JJA temperature anomaly of $3^{\circ}C$ calculated from the full model (thick line), the reduced model (thin line) and the reduced model using surface conditions from the full model (dashed line). Bottom: percentage of the melt anomaly due to changes in insolation for constant summer temperature anomalies of 1, 3 and $5^{\circ}C$ (blue, purple and red, respectively).

Insolation in paleo ice sheet modeling

A. Robinson and
H. Goelzer

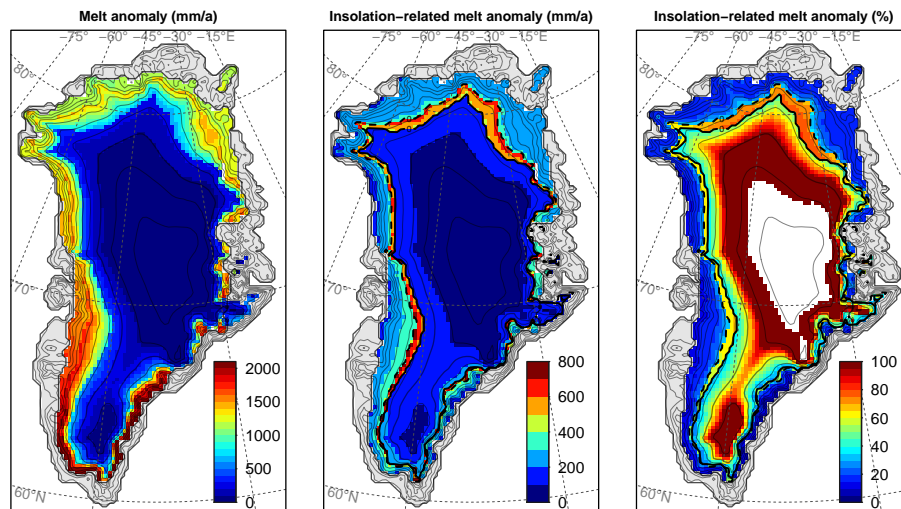


Fig. 2. Melt anomaly at 126 kaBP given a 3°C summer temperature anomaly relative to today. Left: total melt anomaly (mma^{-1}). Center: melt anomaly (mma^{-1}) due to insolation changes. Right: percentage of melt due to insolation changes. In the center and right panels, the solid and dashed black lines show the equilibrium line altitude for the full ($M(S)$) and reduced model ($M(S_0)$), respectively.

Title Page

Abstract

Introduction

Conclusions

References

Tables

Figures

◀

▶

◀

▶

Back

Close

Full Screen / Esc

Printer-friendly Version

Interactive Discussion



Insolation in paleo ice sheet modeling

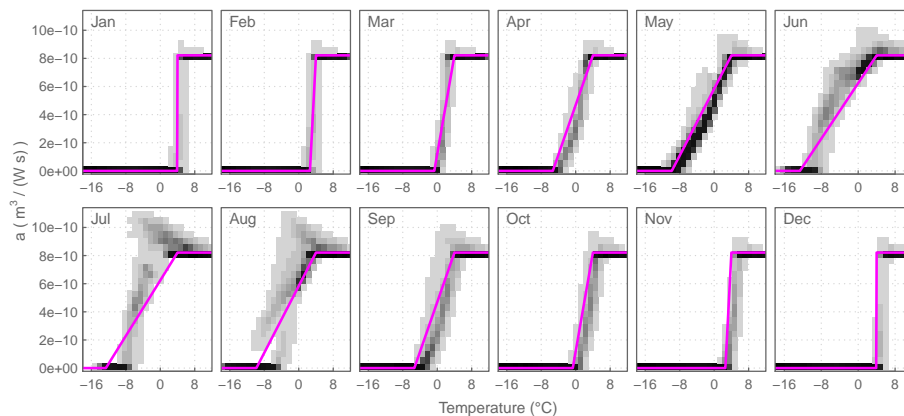
A. Robinson and
H. Goelzer

Fig. 3. Monthly diagnostic values of the coefficient a vs. temperature (shading represents density of points), along with the parameterization given by Eq. (6) (magenta line).

[Title Page](#)[Abstract](#)[Introduction](#)[Conclusions](#)[References](#)[Tables](#)[Figures](#)[⏪](#)[⏩](#)[◀](#)[▶](#)[Back](#)[Close](#)[Full Screen / Esc](#)[Printer-friendly Version](#)[Interactive Discussion](#)

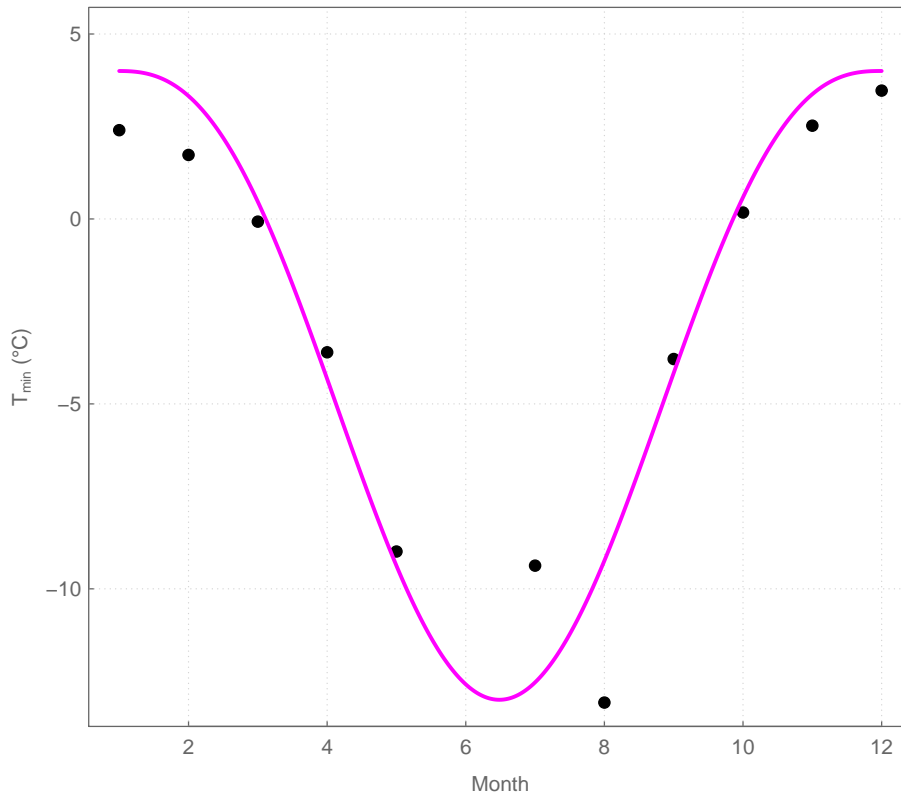


Fig. 4. Seasonal value of T_{\min} estimated from a linear fit to the diagnostic values of a in the range of $0 < a < a_{\max}$ (black points) and compared to the parameterization given by Eq. (7) (magenta line).

Insolation in paleo ice sheet modeling

A. Robinson and
H. Goelzer

Title Page

Abstract

Introduction

Conclusions

References

Tables

Figures

⏪

⏩

◀

▶

Back

Close

Full Screen / Esc

Printer-friendly Version

Interactive Discussion



Insolation in paleo ice sheet modeling

A. Robinson and
H. Goelzer

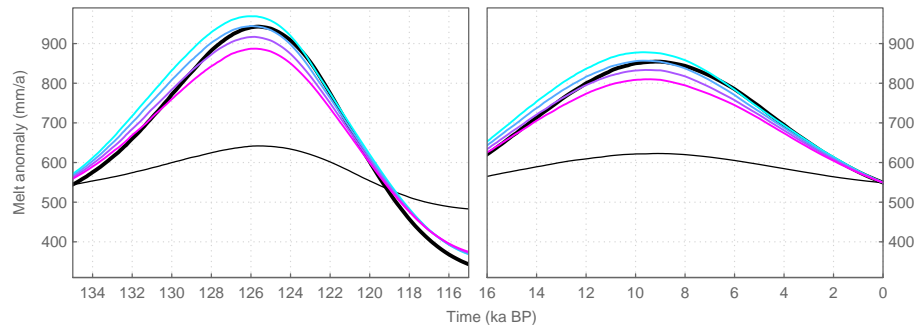


Fig. 5. Greenland ice sheet melt anomalies for the Eemian (left) and the Holocene (right) given a 3°C summer temperature anomaly relative to today, calculated with the full model ($M(S)$, thick black line), the reduced model ($M(S_0)$, thin black line) and an ensemble of insolation-corrected model versions ($M(S_0)_{\text{corr}}$) with the parameter T_{min} set to -15 , -14 , -13 and -12°C (cyan to magenta lines, respectively).

Title Page

Abstract

Introduction

Conclusions

References

Tables

Figures

◀

▶

◀

▶

Back

Close

Full Screen / Esc

Printer-friendly Version

Interactive Discussion



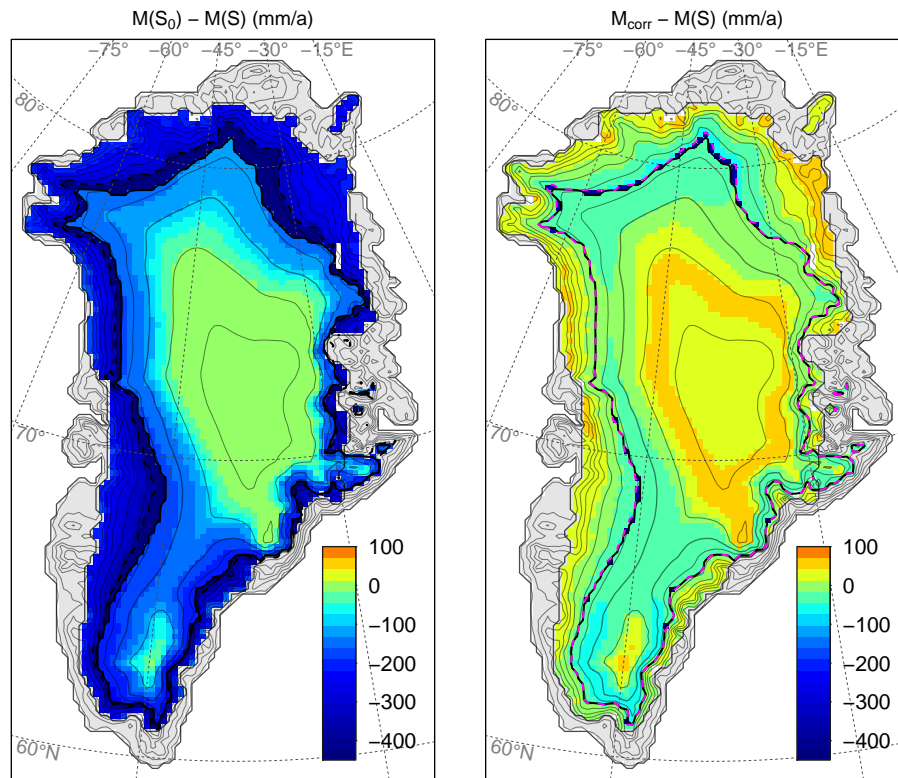


Fig. 6. Error in melt (mm a^{-1}) for a 3°C summer temperature anomaly at 126 kaBP calculated with the reduced (left) and insolation-corrected (right) model, compared to melt from the full model. The solid and dashed black lines in the left panel show the equilibrium line altitudes for the full ($M(S)$) and reduced model ($M(S_0)$), respectively. The dashed magenta line in the right panel shows the same for the insolation corrected-model.

Insolation in paleo ice sheet modeling

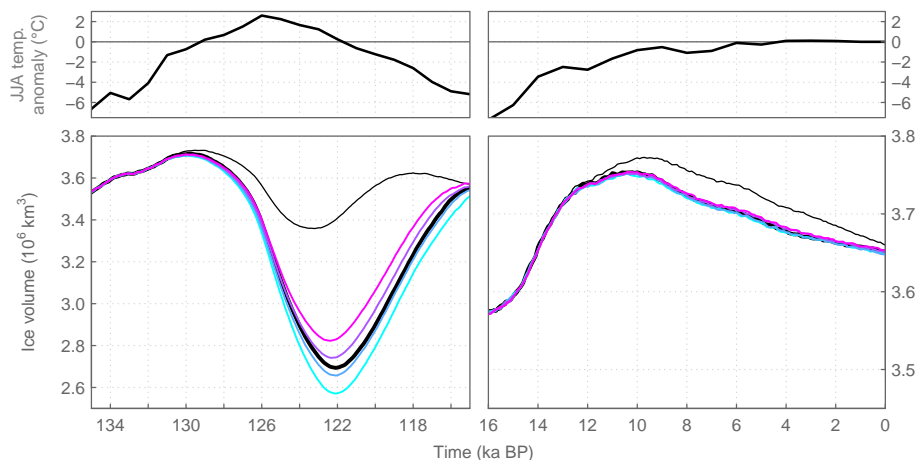
A. Robinson and
H. Goelzer

Fig. 7. Transient simulations of the Eemian (left) and the Holocene (right) with a fully coupled climate–ice sheet model. Top: applied summer temperature anomaly forcing. Bottom: ice volume from simulations in which melt is calculated with the full model (thick black line), the reduced model forced with present-day insolation (thin black line) and an ensemble of insolation-corrected model versions with the parameter T_{\min} set to -15 , -14 , -13 and -12 °C (cyan to magenta lines, respectively).

Title Page

Abstract

Introduction

Conclusions

References

Tables

Figures

◀

▶

◀

▶

Back

Close

Full Screen / Esc

Printer-friendly Version

Interactive Discussion



Insolation in paleo ice sheet modeling

A. Robinson and
H. Goelzer

Title Page

Abstract

Introduction

Conclusions

References

Tables

Figures

◀

▶

◀

▶

Back

Close

Full Screen / Esc

Printer-friendly Version

Interactive Discussion

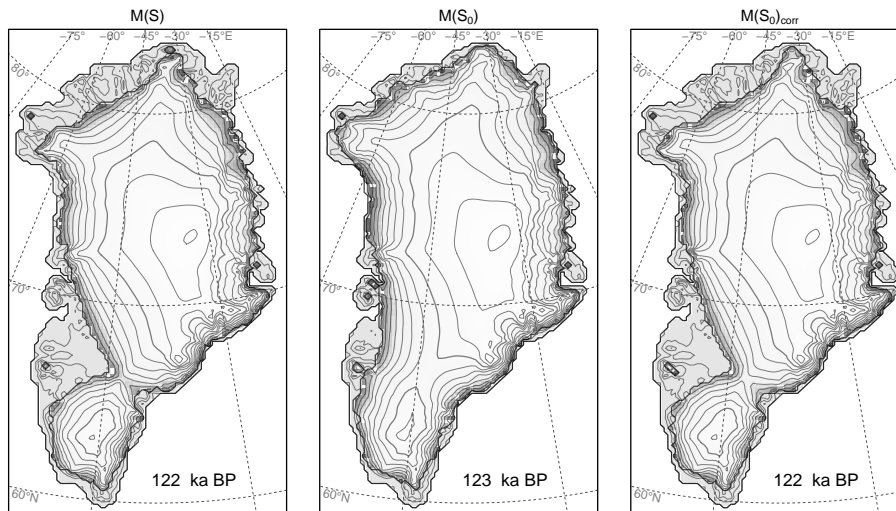


Fig. 8. Distribution and timing of the minimum ice sheet volume during the Eemian for coupled simulations using the full model (left), the reduced model (middle) and the insolation-corrected model (right).