

This discussion paper is/has been under review for the journal The Cryosphere (TC).  
Please refer to the corresponding final paper in TC if available.

# Glacier change in the Cariboo Mountains, British Columbia, Canada (1952–2005)

M. J. Beedle, B. Menounos, and R. Wheate

Geography Program, University of Northern British Columbia, Prince George, BC, Canada

Received: 20 May 2014 – Accepted: 2 June 2014 – Published: 25 June 2014

Correspondence to: M. J. Beedle (beedlem@unbc.ca)

Published by Copernicus Publications on behalf of the European Geosciences Union.

## Glacier change in the Cariboo Mountains, British Columbia, Canada (1952–2005)

M. J. Beedle et al.

Title Page

Abstract

Introduction

Conclusions

References

Tables

Figures

⏪

⏩

◀

▶

Back

Close

Full Screen / Esc

Printer-friendly Version

Interactive Discussion



## Abstract

We calculated dimensional change for 33 glaciers in the Cariboo Mountains of British Columbia for the latter half of the twentieth century. All glaciers receded during the period 1952–2005; area retreat averaged  $-0.19 \pm 0.05 \% a^{-1}$ . From 1952 to 1985, nine glaciers advanced. Following 1985, retreat rates accelerated to  $-0.41 \pm 0.12 \% a^{-1}$ . Thinning rates likewise accelerated, from  $-0.14 \pm 0.04 \text{ m w.e. } a^{-1}$  (1952–1985) to  $-0.50 \pm 0.07 \text{ m w.e. } a^{-1}$  for the period 1985–2005. Temperatures increased from the earlier to the latter period for the ablation ( $+0.38^\circ\text{C}$ ) and accumulation ( $+0.87^\circ\text{C}$ ) seasons, and average precipitation decreased, particularly in the accumulation season ( $-32 \text{ mm}$ ,  $-3.2\%$ ). Our comparison of surface area change with glacier morphometry corroborates previous studies that show primary relations between extent change and surface area. We also find, however, that the strength and sign of these relations varied for different epochs.

## 1 Introduction

Glaciers are important components of the hydrologic system. They contribute meltwater along with organic and inorganic materials to freshwater systems (Bogdal et al., 2009; Hood et al., 2009; Moore et al., 2009; Marshall et al., 2011). These inputs, along with downstream impacts, are altered when glaciers undergo changes in extent and volume. As glaciers and ice caps (GIC; all glaciers outside of the Antarctic and Greenland ice sheets) lose volume, sea level rises (Radić and Hock, 2011). The largest GIC contributions to sea level rise include the Canadian Arctic Archipelago and Gulf of Alaska regions (Gardner et al., 2011; Berthier et al., 2010), but recent work demonstrates that, collectively, small glaciers ( $< 1 \text{ km}^2$ ) contribute a significant amount to total GIC volume (Bahr and Radić, 2012).

Recent studies of glacier change use a variety of remotely-sensed products that include aerial photography (Koblet et al., 2010; Tennant et al., 2012), satellite imagery

TCD

8, 3367–3411, 2014

## Glacier change in the Cariboo Mountains, British Columbia, Canada (1952–2005)

M. J. Beedle et al.

Title Page

Abstract

Introduction

Conclusions

References

Tables

Figures

◀

▶

◀

▶

Back

Close

Full Screen / Esc

Printer-friendly Version

Interactive Discussion



## Glacier change in the Cariboo Mountains, British Columbia, Canada (1952–2005)

M. J. Beedle et al.

Title Page

Abstract

Introduction

Conclusions

References

Tables

Figures

◀

▶

◀

▶

Back

Close

Full Screen / Esc

Printer-friendly Version

Interactive Discussion



(Paul et al., 2004; Berthier et al., 2010), and laser altimetry (Sapiano et al., 1998; Arendt et al., 2002). Typically these studies employ a combination of geomatic data to assess changes in glaciers for a particular region (Schiefer et al., 2007; Abermann et al., 2009; Bolch et al., 2010). Comprehensive inventories of glacier extent and change (e.g., Bolch et al., 2010), and measurement of glacier volume change of large regions (e.g., Schiefer et al., 2007) primarily rely on satellite borne instruments. Such analysis is therefore limited to the last 30 years. Air photos afford the ability to document glacier change for up to three decades prior to the beginning of the satellite era. In this study we use aerial photogrammetry to investigate the extent and volume change of a subset of glaciers in western Canada for the periods 1952–1970, 1970–1985, and 1985–2005. The use of aerial photography thus provides a method to temporally extend the glacier inventory studies of Schiefer et al. (2007) and Bolch et al. (2010). The use of aerial photography also provides an independent check against glacier mapping using lower-resolution satellite imagery.

The objectives of this study are to: (1) document the extent and volume change of a subset of glaciers in the Cariboo Mountains of British Columbia (BC); and (2) assess the climatological conditions that could explain observed glacier change in the study area.

### 1.1 Study area and previous work

The Cariboo Mountains are the northernmost range of the Columbia Mountains of BC, Canada (Fig. 1). The climate of the Cariboo Mountains is transitional, wetter than the Rocky Mountains to the east, and drier than the Coast Mountains. Total annual precipitation (1971–2000 climate normals) averages 1014 and 679 mm on the windward (Barkerville, BC) and lee (McBride, BC) sides of the Cariboo Mountains, and annual temperature averages 1.9 and 4.4 °C respectively (Environment Canada, 2012).

Annual length change of Castle Creek Glacier in the Cariboo Mountains is more closely related to changes of glaciers in the Coast Mountains than those of the Rocky Mountains (Beedle et al., 2009). Meltwater from the majority of glaciers in the Cariboo

## Glacier change in the Cariboo Mountains, British Columbia, Canada (1952–2005)

M. J. Beedle et al.

Title Page

Abstract

Introduction

Conclusions

References

Tables

Figures

◀

▶

◀

▶

Back

Close

Full Screen / Esc

Printer-friendly Version

Interactive Discussion



Cariboo Mountains contributes to the Fraser River; however, some glaciers in the Premier Range (a Cariboo Mountains subrange) contribute to the Columbia River (Fig. 1). Maurer et al. (2012) found that glaciers of the Cariboo Mountains nearly reached their Holocene maximum extents around 2.73–2.49 ka and that major retreat of the glaciers did not begin until the early 20th century. Luckman et al. (1987) showed that some glaciers of the Premier Range advanced in the 1960s and 1970s in response to decreased temperatures and increased winter precipitation. Bolch et al. (2010) completed the first satellite inventory of glaciers in western Canada, identifying 536 glaciers in the Cariboo Mountains (2005) with a total surface area of 731 km<sup>2</sup>. Cariboo Mountains glaciers lost 7.06 km<sup>3</sup> of ice at a rate of –0.58 m water equivalent (w.e.) a<sup>-1</sup> during the period 1985–1999 (Schiefer et al., 2007).

## 2 Methods

### 2.1 Imagery and supplemental data

We measured glacier extent and surface elevation change from aerial photographs obtained from the British Columbia Government and Canada National Air Photo Library (Table 1). Imagery prior to 2005 was scanned at a resolution of 12–14 µm from diapositives or negatives using a photogrammetric scanner whereas imagery from 2005 was available as digital aerial triangulation (AT) scans (digital photos with available exterior orientation; BC Ministry of Environment, 1998). Ground sampling distance ranges from 0.2 to 1.1 m depending on scanning resolution and image scale. Most photos were taken in late summer, but dates range from mid-July to late-September. We used all images to estimate glacier length and area change, whereas only those from 1946, 1952, 1984, 1985, and 2005 were used to determine surface-elevation change. As photos for each subregion were taken in different years, we thus report a mean area-weighted year: 1952 for photos taken in 1946, 1952, or 1955; 1970 for those of 1967, 1970, or 1971; and 1985 for those of 1984 or 1985. All annual rates of extent or volume change

are calculated using the actual duration between images. We report extent change of glaciers within three intervals (1952–1970, 1970–1985, and 1985–2005) and surface-elevation change for two epochs (1952–1985 and 1985–2005).

We use ClimateWNA (Wang et al., 2012) to assess the variability in temperature and precipitation during the periods for which we measure glacier extent and surface-elevation change. The ClimateWNA v4.72 program (<http://www.genetics.forestry.ubc.ca/cfcg/ClimateWNA/ClimateWNA.html>) interpolates and extracts climate data for specific locations for western North America, relying on downscaled PRISM (Daly et al., 2002) and historical data (Mitchell and Jones, 2005) to generate monthly time series of temperature and precipitation. Refer to Wang et al. (2012) for details. We use averaged ClimateWNA output for points along the center-line every 100 m in elevation for all 33 glaciers ( $n = 212$ ) to estimate Cariboo Mountains glacier climatology, and for glaciers of the Castle Creek region ( $n = 47$ ), Quanstrom region ( $n = 62$ ), and Premier region ( $n = 103$ ) to estimate sub-regional climatology. We compare monthly temperature precipitation data from ClimateWNA with measurements at Castle Creek Glacier (Déry et al., 2010) for 2009–2011 to estimate the ability of ClimateWNA to represent conditions at high elevations in the Cariboo Mountains.

To investigate dominant synoptic patterns over the Cariboo Mountains, we use the National Centers for Environmental Protection/National Center for Atmospheric Research (NCEP/NCAR) reanalysis data (Kalnay et al., 1996) of 700 hPa geopotential height anomalies. The 700 hPa geopotential surface provides a good indicator of general atmospheric conditions in the middle troposphere (~3000 m), an elevation just above the uppermost extent of most glaciers in the Cariboo Mountains. We assess climatic conditions for balance years (October–September), and for ablation and accumulation seasons, defined as June–September and October–May, respectively.

## 2.2 Photogrammetry

We used the Vr Mapping photogrammetry software suite (Cardinal Systems LLC) to create stereo models from aerial photos. Exterior orientation for the models was de-

TCD

8, 3367–3411, 2014

## Glacier change in the Cariboo Mountains, British Columbia, Canada (1952–2005)

M. J. Beedle et al.

Title Page

Abstract

Introduction

Conclusions

References

Tables

Figures

◀

▶

◀

▶

Back

Close

Full Screen / Esc

Printer-friendly Version

Interactive Discussion



## Glacier change in the Cariboo Mountains, British Columbia, Canada (1952–2005)

M. J. Beedle et al.

Title Page

Abstract

Introduction

Conclusions

References

Tables

Figures

◀

▶

◀

▶

Back

Close

Full Screen / Esc

Printer-friendly Version

Interactive Discussion



rived from tie points and common ground control points (GCP) horizontally and vertically distributed throughout the photos (Schiefer and Gilbert, 2007; Barrand et al., 2009). Within each subregion we used common GCPs to reduce systematic positional errors (Kääb and Vollmer, 2000; Schiefer and Gilbert, 2007; Schiefer et al., 2007).

GCPs consisted of stable bedrock features or boulders obtained from aerial triangulated stereo models (BC Ministry of Environment, 1998).

Eleven check patches, located on stable surfaces around each glacier region (Fig. 2), were used to quantify the relative accuracy of the stereo models (Fig. 3). Each check patch is comprised of 25 individual checkpoints in a five-meter grid; we estimated systematic bias of stereo models from the mean residuals of the check patches. Trend surfaces were created from these 11 mean residuals and used to apply a correction for glacier surface-elevation measurements.

### 2.3 Glacier subset selection

With the exception of 2005, glaciers of the Cariboo Mountains were not comprehensively photographed in any given year, and we thus concentrate our study on three subregions of the Cariboo Mountains with suitable photographic coverage: (1) the Castle Creek Glacier area; (2) the Quanstrom Mountain area; and (3) the Premier Range (Figs. 1 and 2). We selected our subset of glaciers based on: (1) availability of imagery, both in terms of temporal resolution and spatial scale; (2) snow cover and contrast; and (3) representativeness based on average glacier morphometry of Cariboo Mountain glaciers presented in Bolch et al. (2010). Snowcover and poor contrast of older aerial photography reduce potential glaciers for study (Table 1). Sun angle with respect to glacier aspect and slope leads to local areas of high reflectivity and an absence of contrast, particularly for some south-facing glaciers. We omitted glaciers with these issues in our selection of a subset.

Within the three Cariboo Mountains subregions, we selected 33 glaciers representing five size classes (0.1–0.5, 0.5–1.0, 1.0–5.0, 5.0–10.0, and > 10.0 km<sup>2</sup>). We used surface area as our primary criterion to select glaciers as many studies find it to be

the key morphometric determinant of glacier extent change (e.g., Serandbrei-Barbero et al., 1999; Hoelzle et al., 2003; Paul et al., 2004; Andreassen et al., 2008; Bolch et al., 2010; Paul and Andreassen, 2009). Our analysis oversampled glaciers in the largest size class as these glaciers likely play a dominant role in regional volume change and meltwater contributions to their respective watersheds (e.g., Arendt et al., 2006; De-Beer and Sharp, 2007; Paul and Haeberli, 2008). All ice masses with the exception of Kiwa Glacier (glacier 32 in Fig. 2 and Table 3) are land-terminating glaciers.

## 2.4 Data collection and analysis

We manually collected glacier extents and point measurements of surface elevation directly from the stereo models. Complete glacier outlines were mapped for 2005, and glacier extents were updated for previous years only below the transient snowline (TSL), thus eliminating errantly mapping seasonal snow cover as glacierized area (e.g., Koblet et al., 2010). Delineation of planimetric glacier area above the TSL is problematic as seasonal snow cover masks the glacier margin, and can erroneously inflate estimates of glacier surface area. Mapping of ice divides relied on surface elevation and surface features such as crevasses and runnels; these divides were held constant in order to compare dimensional changes for a given ice body through time. Extent-change analysis was made for different glacier subsets by epoch based on aerial photo coverage and snowcover. Collectively, our analysis allows us to compare area change for 33 glaciers for the epochs 1952–1985, 1985–2005, and 1952–2005 (33-glacier subset), and for 26 glaciers in the additional epochs 1952–1970, and 1970–1985 (26-glacier subset).

Poor contrast and snowcover limit our analysis of glacier surface elevation change to seven glaciers for the periods 1952–1985, 1985–2005, and 1952–2005. For these glaciers, we measured surface elevation on a 100 m grid for large glaciers ( $> 1 \text{ km}^2$ ) and on a 50 m grid for small glaciers ( $< 1 \text{ km}^2$ ). Poor contrast in the earliest photographs inhibited data collection over portions of glacier accumulation zones for four of the seven glaciers. In these areas, we extrapolate from the three highest elevation bins where we

TCD

8, 3367–3411, 2014

# Glacier change in the Cariboo Mountains, British Columbia, Canada (1952–2005)

M. J. Beedle et al.

Title Page

Abstract

Introduction

Conclusions

References

Tables

Figures

◀

▶

◀

▶

Back

Close

Full Screen / Esc

Printer-friendly Version

Interactive Discussion



have measurements, assigning the average surface-elevation change of these observations to the bins with missing values. This assumption was necessary only for periods that rely on the earliest year of photography (1952); missing data total a maximum of 27% of total glacier surface area.

To calculate glacier-wide volume change from point measurements, we multiplied average elevation change for each 50 m elevation bin and summed over the entire glacier surface. Elevation bins and glacier surface were derived from epoch-specific glacier hypsometries created from the same point measurements. Where poor contrast led to an absence of measurements in the accumulation area, we used surface-elevation measurements for that elevation bin from the stereo model of a prior or subsequent year. This approach assumes that surface elevation and extent underwent negligible change, an assumption that would be inappropriate in the rapidly changing ablation zones, but one that is more likely in the accumulation zones where this assumption was applied. We calculated glacier wide average thickness change based on the average of the two extents that define a given period (e.g., Arendt et al., 2002; Barrand et al., 2010). All values presented in water equivalent (w.e.) are calculated by assuming a density of  $900 \text{ kg m}^{-3}$  in the ablation area and  $750 \text{ kg m}^{-3}$  in the accumulation area (e.g., Beedle et al., 2014); ablation and accumulation areas are defined by each glacier's median elevation (Table 2).

To estimate regional (Cariboo Mountains) glacier extent change, we extrapolated from measurements of our subset of studied glaciers using the average rates of relative extent change by size class for different periods. We used two methods to estimate Cariboo Mountains surface-elevation change: first, the average surface-elevation change of our subset of seven glaciers; and second, the average gradient of surface-elevation change with elevation, defined as the average of all measurements within each 50 m bin, and integrated it with the Cariboo Mountains glacier hypsometry of 1985. We compare extrapolated values with results from recent work that included volume change (Schiefer et al., 2007) and extent change (Bolch et al., 2010) of Cariboo Mountains glaciers.

## Glacier change in the Cariboo Mountains, British Columbia, Canada (1952–2005)

M. J. Beedle et al.

Title Page

Abstract

Introduction

Conclusions

References

Tables

Figures

◀

▶

◀

▶

Back

Close

Full Screen / Esc

Printer-friendly Version

Interactive Discussion





## 2.5 Error analysis

We estimated error in glacier extent and extent change based on a buffer approach (Granshaw and Fountain, 2006). Our buffer ( $\pm 5$  pixels) yields widths of  $\sim 5.5$  to  $1.3$  m, depending on image resolution. Error in extent change is calculated as the root mean squared error (RMSE) of the error estimates for the years that define a given period. Average errors for the 33-glacier subset range from  $0.8$ – $2.4$  % for extents, and from  $2.3$ – $3.6$  % for extent change. These errors vary depending on image resolution (see Table 1) and glacier dimensions.

We used the standard deviation of 275 check points in 11 check patches to estimate error in our measurements of surface-elevation change ( $E_{\Delta Z}$ ). To account for greater uncertainty over surfaces with reduced contrast, we added an error of  $\pm 5$  m for measurements above the TSL. In cases where measurements are absent due to poor contrast, we increased this added error term to  $\pm 10$  m (e.g., Tennant and Menounos, 2013). Error in measurements of surface-elevation change in the ablation area is  $1\sigma$  of check points, whereas for the accumulation zone it is the quadrature sum of  $1\sigma$  of check points ( $E_1$ ) and the added error of  $\pm 5$  or  $10$  m for reduced contrast ( $E_2$ ):

$$E_{\Delta Z} = \sqrt{E_1^2 + E_2^2} \quad (1)$$

Converting to water equivalent units through density assumptions imparts an additional error term. To estimate error in the density assumption of  $750 \text{ kg m}^{-3}$  for the accumulation zone we used a range of possible values for accumulation-zone density ( $600$ – $900 \text{ kg m}^{-3}$ ). We estimate error in our measurements of surface-elevation change in water equivalent units ( $E_{\Delta Z \text{ w.e.}}$ ) as:

$$E_{\Delta Z \text{ w.e.}} = \sqrt{E_{\Delta Z}^2 \rho^2 + E_{\rho}^2 \Delta Z^2} \quad (2)$$

where  $\rho$  is density expressed as a water-equivalent conversion factor ( $0.9$  in the ablation zone,  $0.75$  in the accumulation zone), and  $E_{\rho}$  is the error in our density assumptions, assumed to be  $0$  in the ablation area and  $0.15$  in the accumulation zone.

TCO

8, 3367–3411, 2014

### Glacier change in the Cariboo Mountains, British Columbia, Canada (1952–2005)

M. J. Beedle et al.

Title Page

Abstract

Introduction

Conclusions

References

Tables

Figures

◀

▶

◀

▶

Back

Close

Full Screen / Esc

Printer-friendly Version

Interactive Discussion



We estimate volume change error ( $E_{VOL}$ ) after Barrand et al. (2010) as:

$$E_{VOL} = \sqrt{\sum_1^{\text{bin}} (E_{\text{bin}} A_{\text{bin}})^2} \quad (3)$$

where  $E_{\text{bin}}$  is the error ( $E_{\Delta Z_{w.e.}}$ ) and  $A_{\text{bin}}$  is the surface area of each 50 m bin.

Previous work indicated a spatial correlation of 1000 m in photogrammetric DEMs (Rolstad et al., 2009), and others have calculated a number of independent measurements ( $n$ ) assuming a correlation scale of 1000 m (Barrand et al., 2010). We calculated degrees of freedom for each glacier from point measurements of surface-elevation change in epochs with complete spatial coverage. Using the Incremental Spatial Auto-correlation tool in ArcGIS 10.1 we calculated correlation distances that range from 350 to 2,000 m, yielding effective degrees of freedom that range from 1 to 5.

We used cross-validation to test the accuracy of our extrapolation of Cariboo Mountains glacier extent and surface-elevation change. In our test of glacier extent extrapolation, we partitioned the 26-glacier subset into four scenarios where we withheld 75, 50, and 25 % of the individual glaciers as a validation set and retained the remainder as a training set. Set selection was randomized within each size class, ensuring each set retained glaciers of varying size. Each of the three scenarios was applied to observations in five epochs: 1952–1970, 1970–1985, 1985–2005, 1952–1985, and 1952–2005. We used the standard deviation of these 15 test cases ( $\pm 4.7\%$ ) as an estimate of error in our extrapolation of the extent of all Cariboo Mountains glaciers. To estimate error in our extrapolation of surface-elevation change, we partitioned our seven glacier subset into two scenarios where we withheld three and four individual glaciers as a validation set and retain the remainder as a training set. Each scenario was applied to observations in three epochs: 1952–1985, 1985–2005, and 1952–2005. We used the variability of these six test cases to estimate error in our extrapolation of surface-elevation change using two methods: (1) mean annual rate of surface elevation change of the glacier sub-

## Glacier change in the Cariboo Mountains, British Columbia, Canada (1952–2005)

M. J. Beedle et al.

Title Page

Abstract

Introduction

Conclusions

References

Tables

Figures



Back

Close

Full Screen / Esc

Printer-friendly Version

Interactive Discussion



set ( $\pm 0.077$  m w.e.  $a^{-1}$ ); and (2) mean surface-elevation change within each collective 50 m elevation bin for the glacier subset ( $\pm 0.089$  m w.e.  $a^{-1}$ ).

### 3 Results

#### 3.1 Regional representativeness

As expected, our glacier subset undersamples ice masses of the Cariboo Mountains in all size classes except the largest size class (Fig. 4). Most glaciers in the Cariboo Mountains (40 %) fall in the 1.0–5.0 km<sup>2</sup> size class compared to 20 % in our sample. In contrast, our subset contains 61 % glaciers exceeding 5.0 km<sup>2</sup> compared to 21 % for the Cariboo Mountains. Eliminating four of the five largest glaciers from our 33-glacier subset (glaciers 30–33; Table 3) would result in a size-class distribution that is nearly identical to glaciers in the Cariboo Mountains.

Our glacier subset also oversamples higher elevations (Fig. 5). Area-altitude distribution of glaciers in the Premier range, for example, are higher than the average elevation of glacier in the Cariboo Mountains whereas the hypsometry of our glacier subset from the Castle and Quanstrom areas are more similar to the total glacierized area of the Cariboo Mountains.

Glaciers in our study also more commonly face north, northeast, and southwest (Fig. 6). Cariboo Mountains glaciers have an average slope of 21.1° whereas our subset has an average slope of 18.7°; these differences, however, are not statistically significant.

#### 3.2 Extent change

Between 1952–2005, glaciers lost  $15.11 \pm 1.89$  km<sup>2</sup> ( $-10.6 \pm 2.9$  %) of their surface area (Table 3). Relative area change varied by subregion, with losses of  $-11.2 \pm 2.7$  %,  $-16.4 \pm 2.0$  %, and  $-4.2 \pm 3.9$  % for the Castle, Quanstrom, and Premier regions re-

## Glacier change in the Cariboo Mountains, British Columbia, Canada (1952–2005)

M. J. Beedle et al.

Title Page

Abstract

Introduction

Conclusions

References

Tables

Figures

◀

▶

◀

▶

Back

Close

Full Screen / Esc

Printer-friendly Version

Interactive Discussion



## Glacier change in the Cariboo Mountains, British Columbia, Canada (1952–2005)

M. J. Beedle et al.

Title Page

Abstract

Introduction

Conclusions

References

Tables

Figures

◀

▶

◀

▶

Back

Close

Full Screen / Esc

Printer-friendly Version

Interactive Discussion



spectively. Absolute area change by size class over the same period varied from  $-6.2 \pm 3.3\%$  ( $0.5\text{--}1.0\text{ km}^2$ ) to  $-13.9 \pm 1.1\%$  ( $5.0\text{--}10\text{ km}^2$ ). Individual glacier area loss varied from  $-0.5 \pm 1.6$  to  $-31.7 \pm 1.4\%$ . Recession for 22 of the 33 glaciers exceeded the uncertainties in the data. Absolute extent change is dominated by three of the largest glaciers (glaciers 28, 31, and 33), which comprise 50% of the total subset extent change for the period.

While glaciers on average shrank during the period 1952–2005, their change during intervening epochs was more complex (Table 3 and Fig. 7). Over the period 1952–1970, for example, five of 26 glaciers advanced, seven receded, and 14 did not significantly change. Between the years 1970 and 1985, two of 26 glaciers advanced, eight shrank, and the area of 16 glaciers did not change. For the cumulative period 1952–1985 nine glaciers advanced, 12 receded, and 11 had no discernable extent change.

Glaciers that advanced were generally shorter, smaller, steeper, and had higher median and minimum elevations than glaciers that receded (Table 4). Glaciers that negligibly changed tended to be steep, but were longer than those glaciers that advanced. Glaciers that changed little were also higher and flowed over a greater elevation range than advancing ones. Receding glaciers all had northerly aspects, whereas those that advanced or did not change had no dominant aspect.

After 1985, all glaciers throughout the region shrank (Fig. 7). The average rate of area change increased from  $-0.05 \pm 0.10\% \text{ a}^{-1}$  from 1952–1985, to  $-0.41 \pm 0.12\% \text{ a}^{-1}$  from 1985–2005. Rates of area change averaged  $+0.03 \pm 0.18\% \text{ a}^{-1}$  for 1952–1970,  $-0.08 \pm 0.13\% \text{ a}^{-1}$  for 1970–1985, and  $-0.40 \pm 0.10\% \text{ a}^{-1}$  from 1985–2005. During the period 1985–2005, 30 glaciers receded, and the area of two glaciers did not change. Total surface area change of the period 1985–2005 was  $-8.39 \pm 1.51\text{ km}^2$ , or  $-6.2 \pm 2.3\%$  (Table 3).

Extrapolating from the Bolch et al. (2010) inventory of 2005 (731  $\text{km}^2$ ) using relative area change of our 26-glacier subset and based on area loss per size class, we estimated that in 1952, the Cariboo Mountains contained a glacierized area of

824  $\pm$  39 km<sup>2</sup>. By 1970 glacier cover declined to 805  $\pm$  38 km<sup>2</sup>, and continued to shrink to 785  $\pm$  37 km<sup>2</sup> by 1985.

We directly compare glacier extent and extent change (1985–2005) for 28 glaciers common to the Bolch et al. (2010) inventory and this study (Fig. 8). The Bolch et al. inventory relies on glacier extents mapped by the British Columbia Government Terrain Resource Inventory Management (TRIM) program from 1980s aerial photography and Landsat imagery from 2003–2007. The 2005 extents of this inventory, created through a semi-automated process, average 2 % larger than our extents manually digitized from aerial photographs with much higher resolution. However, the Bolch et al. (2010) inventory uses an area-weighted date (2005); the actual date of imagery covering the Cariboo Mountains is from 2006. Relative area change for the period 1985–2005 averaged  $\sim 0.3\% \text{ a}^{-1}$  for this 28-glacier subset, and thus the Bolch et al. (2010) inventory, based on 2006 imagery, will not significantly differ from our measurements from 2005 aerial photos. This provides evidence of the quality of the 2005 inventory and the precision of the method used by Bolch et al. (2010). The 1985 TRIM extents, however, digitized manually by the province of British Columbia from the same aerial photographs we use here, average 5 % larger than our extents. Late-lying snow is prevalent in the 1984 and 1985 photographs, but reference to additional photographs in years with a higher snowline helped us distinguish snowfields from glacierized area. The TRIM mapping included some late-lying snow as glacier, resulting in overestimation of 1985 extents in the TRIM dataset. Errant mapping of late-lying snow thus led to 52 % more surface-area loss reported in the Bolch et al. (2010) inventory than we find for the 28 glaciers of this comparison.

Based on the extrapolation procedure described above, we estimate a net change of  $-53 \text{ km}^2$  ( $-6.8\%$ ) for the period 1985–2005 compared to  $-114 \text{ km}^2$  ( $-13.5\%$ ) of Bolch et al. (2010). We estimate Cariboo Mountains glacier extent to have been 785  $\pm$  37 km<sup>2</sup> in 1985, vs. 845 km<sup>2</sup> reported by Bolch et al. (2010), a difference of 7.7 %. The Cariboo Mountains glacierized area for 1952 was 824  $\pm$  39 km<sup>2</sup>, still 2.5 % less than the 845 km<sup>2</sup> of the 1985 TRIM extents used in previous work (Schiefer et al., 2007; Bolch et al.,

**Glacier change in the Cariboo Mountains, British Columbia, Canada (1952–2005)**

M. J. Beedle et al.

<a href="#">Title Page</a>	
<a href="#">Abstract</a>	<a href="#">Introduction</a>
<a href="#">Conclusions</a>	<a href="#">References</a>
<a href="#">Tables</a>	<a href="#">Figures</a>
<a href="#">◀</a>	<a href="#">▶</a>
<a href="#">◀</a>	<a href="#">▶</a>
<a href="#">Back</a>	<a href="#">Close</a>
<a href="#">Full Screen / Esc</a>	
<a href="#">Printer-friendly Version</a>	
<a href="#">Interactive Discussion</a>	



2010). Our results thus demonstrate that glacier loss during the period 1985–2005 was higher than during previous epochs, but that the absolute surface area lost in this period may have been overestimated in previous studies.

The relation between area change and glacier morphometry temporally varies (Table 5). For three periods – 1952–1985, 1985–2005, and 1952–2005 – absolute area change correlates ( $p < 0.05$ ) negatively with glacier length and area, indicating that the larger glaciers in absolute terms lost more surface area in all periods. The relation between relative area change and both length and area varies with time. For the period 1952–1985 we find  $r$ -values of  $-0.235$  and  $-0.210$  for length and area respectively, and these correlations for length and area change to  $0.328$  ( $p < 0.10$ ) and  $0.316$  ( $p < 0.10$ ) for the period 1985–2005. Large glaciers thus lost more relative area in the earlier period, whereas small glaciers lost more relative area in the latter period. Average glacier surface slope is correlated with absolute and relative area change in all periods, except for relative area change from 1985–2005, indicating steeper glaciers generally lost less absolute and relative surface area, except during the latter period when there was no correlation. Median glacier elevation is correlated with absolute area change for the period 1952–1985 ( $r = 0.358$ ,  $p < 0.05$ ) and relative area change for the period 1952–2005 ( $r = 0.487$ ,  $p < 0.05$ ) indicating that glaciers with more surface area at higher elevations experienced less area change in these two periods.

### 3.3 Volume change

Over the period 1952–1985, the seven glaciers of our study lost  $-0.480 \pm 0.051 \text{ km}^3 \text{ w.e.}$  Volume loss during the first period (1952–1985) totaled  $-0.195 \pm 0.059 \text{ km}^3 \text{ w.e.}$ , and this loss accelerated to  $-0.345 \pm 0.048 \text{ km}^3 \text{ w.e.}$  during the later period (1985–2005). These volume losses correspond to respective thinning rates of  $-0.14 \pm 0.043 \text{ m w.e. a}^{-1}$  and  $-0.50 \pm 0.07 \text{ m w.e. a}^{-1}$  (Table 6 and Fig. 9). Net thinning rates over the period 1952 to 2005 averaged  $-0.23 \pm 0.02 \text{ m w.e. a}^{-1}$ . Two glaciers, both of which advanced over the same period, markedly thickened between

## Glacier change in the Cariboo Mountains, British Columbia, Canada (1952–2005)

M. J. Beedle et al.

Title Page

Abstract

Introduction

Conclusions

References

Tables

Figures



Back

Close

Full Screen / Esc

Printer-friendly Version

Interactive Discussion



1952–1985 (Table 6). Both of these glaciers thinned after 1985, but experienced little net change from 1952–2005. Five glaciers continuously thinned and receded.

Extrapolation of these thinning rates to unmeasured glaciers in the Cariboo Mountains yields volume losses of  $-4.027 \pm 2.044$  and  $-7.580 \pm 1.167 \text{ km}^3 \text{ w.e.}$  for the periods 1952–1985 and 1985–2005 respectively. We obtain lower estimates of volume change ( $-2.312 \pm 2.170$  and  $-6.242 \pm 1.315 \text{ km}^3 \text{ w.e.}$ ) using elevation-averaged surface elevation change measurements from these seven glaciers.

### 3.4 Relation to climate

Surface temperature increased during the period of study, particularly after 1985 (Fig. 10). From the earlier (1952–1985) to the latter epoch (1986–2005), average temperatures increased by  $+0.38$  and  $+0.87 \text{ }^\circ\text{C}$  for the ablation and accumulation season respectively.

Accumulation season and annual precipitation decreased during the period of study, but little change occurred during the ablation season (Fig. 11). From the earlier (1952–1985) to the latter period (1986–2005), accumulation-season and annual precipitation decreased by  $-32 \text{ mm}$  ( $-3.2 \%$ ) and  $-44 \text{ mm}$  ( $-3.0 \%$ ) respectively.

Geopotential height (700 hPa) anomalies, based on 1952–2005 mean fields, reveal an area of persistent low pressure in western Canada during the accumulation and ablation seasons for the periods 1952–1970 and 1971–1985 (Fig. 12). These low-pressure anomalies were centered over the Yukon Territory and northern BC from 1952–1970. These areas of low pressure weakened during the period 1971–1985 with a prominent trough along the Coast Mountains (ablation season) and diffuse area of anomalously low pressure over much of central North America (accumulation season). A marked change in circulation occurred for the later period with anomalously high pressure present during the period 1986–2005, with ridges over south central Alaska (ablation season) and off the coast of northern BC and southeastern Alaska (accumulation season).

## Glacier change in the Cariboo Mountains, British Columbia, Canada (1952–2005)

M. J. Beedle et al.

Title Page	
Abstract	Introduction
Conclusions	References
Tables	Figures
⏪	⏩
◀	▶
Back	Close
Full Screen / Esc	
Printer-friendly Version	
Interactive Discussion	



## Glacier change in the Cariboo Mountains, British Columbia, Canada (1952–2005)

M. J. Beedle et al.

Title Page

Abstract

Introduction

Conclusions

References

Tables

Figures



Back

Close

Full Screen / Esc

Printer-friendly Version

Interactive Discussion



These synoptic conditions broadly accord with the Pacific Decadal Oscillation (PDO; Mantua et al., 1997), a pattern of Pacific climate variability that persists for multiple decades and plays a prominent role in determining glacier mass balance in northwest North America (e.g., Bitz and Battisti, 1999). The earlier two periods (1950–1970 and 1971–1985) were largely coincident with a cool phase of the PDO from 1947 to 1976. In contrast, the latest period (1985–2005) coincided with a warm phase of the PDO from 1977 to at least the mid-1990s.

## 4 Discussion

### 4.1 Regional representativeness

Our glacier subset represents a compromise between regional representativeness and the availability of suitable aerial photography. We oversampled large glaciers as they will contribute most to volume change for a given region. While glaciers of the 1–5 km<sup>2</sup> size class dominated volume change in the Cariboo Mountains for the period 1985–2005, losses from large glaciers (> 5 km<sup>2</sup>) were even more important for previous epochs. The two largest glaciers for which we calculated volume change, for example, accounted for 94 % of the total volume change for seven glaciers from 1952–1985, and 75 % from 1985–2005. Selection of a representative subset of glaciers for a region is difficult, especially when glacier change is assessed over multiple epochs.

Most studies of glacier change note increased scatter of percent area change for smaller glaciers (Serandbrei-Barbero et al., 1999; Kääb et al., 2001; Paul, 2002; Paul et al., 2004; DeBeer and Sharp, 2007; Andreassen et al., 2008; Bolch et al., 2010; Paul and Andreassen, 2009). This scatter may arise from the influence of local topographic factors (DeBeer and Sharp, 2007; Paul and Andreassen, 2009). Kääb et al. (2001) concluded that this scatter could also be the result of using low-resolution satellite imagery, or from the fast response times of small glaciers. Late-lying seasonal snow may also impact the inferred relative area change of small glaciers, and could play



## Glacier change in the Cariboo Mountains, British Columbia, Canada (1952–2005)

M. J. Beedle et al.

Title Page

Abstract

Introduction

Conclusions

References

Tables

Figures

◀

▶

◀

▶

Back

Close

Full Screen / Esc

Printer-friendly Version

Interactive Discussion



5 a role in the observation of increased scatter for smaller glaciers. To assess this factor we compared the standard deviation in relative area change of the smallest glaciers as measured for 28 glaciers in both Bolch et al. (2010) and in our study, which based on our analysis is less affected by late-lying seasonal snow cover. The standard deviation of relative area change from 1985–2005 for the Bolch et al. (2010) inventory is 8.1 % for the smallest glaciers ( $< 1.0 \text{ km}^2$ ), whereas in our study it is 5.8 %. This difference is significant ( $F$  test,  $p < 0.05$ ); it supports our hypothesis that late-lying seasonal snow plays a role in observations of increased scatter for smaller glaciers, and that the TRIM mapping of 1985 glacier extents errantly mapped seasonal snow cover as glacierized area.

### 4.2 Area change

15 Our results indicate net recession of Cariboo Mountains glaciers from 1952–2005, consistent with other studies of glacier change in BC (DeBeer and Sharp, 2007; Brewis, 2012; Tennant et al., 2012; Tennant and Menounos, 2013). While net glacier change of our 33-glacier subset over this period is negative ( $-15.11 \pm 1.89 \text{ km}^2$  or  $-10.6 \pm 2.9 \%$ ), recession for 11 of these glaciers was not significant. Nine of these 11 glaciers advanced during the period 1952–1985.

20 Our finding of glacier advance in the period 1952–1985 accords with the advance in the Premier Range described by Luckman et al. (1987) and with glacier expansion elsewhere in BC during this period (Koch et al., 2009; Menounos et al., 2009; Brewis, 2012; Tennant and Menounos, 2013). Studies that only determine net recession over a multi-decadal period (e.g., DeBeer and Sharp, 2007, 2009; Jiskoot et al., 2009) may not capture minor advances like those of the present study.

25 During the period 1985–2005, glaciers shrank eight times faster than the period 1952–1985, and five times faster than 1970–1985 (Fig. 7). Annual recession of Castle Creek Glacier (glacier 28) increased from about  $-10 \text{ m a}^{-1}$  in the early-to-mid 1980s to about  $-40 \text{ m a}^{-1}$  in the early-1990s (Beedle et al., 2009). Tennant and Menounos

(2013) also found increased recession rates for glaciers of the Columbia Icefield of BC and Alberta, which increased after 1979 and again after 2000.

### 4.3 Thickness change

Observed thinning rates during the period 1952–2005 averaged  $-0.23 \pm 0.12 \text{ m w.e. a}^{-1}$ , resulting in a net loss of  $-0.48 \pm 0.05 \text{ km}^3 \text{ w.e.}$  (Table 6). This rate of thinning is considerably less than long-term thinning rates for glaciers of the Columbia Icefield ( $-0.6 \pm 0.3 \text{ m w.e. a}^{-1}$ ; Tennant and Menounos, 2013) and Alaskan glaciers ( $-0.48 \pm 0.10 \text{ m w.e. a}^{-1}$ ; Berthier et al., 2010). However, our average thinning rate is similar to those reported for nine North America glaciers for the period from the mid-1950s to the mid-1990s, which range from  $+0.01$  to  $-0.61$  and average  $-0.21 \text{ m w.e. a}^{-1}$  (Sapiano et al., 1998).

From 1952–1985 thinning rates averaged  $-0.14 \pm 0.16 \text{ m w.e. a}^{-1}$  and glaciers lost  $-0.20 \pm 0.06 \text{ km}^3 \text{ w.e.}$  The two smallest glaciers of our study thickened and advanced over the same period. Brewis (2012) also found that four of six glaciers in the Canoe River Basin (Fig. 1) thickened and advanced during the period 1955–1970.

The post-1985 accelerated thinning of Cariboo Mountain glaciers agrees with other studies of glacier change in northwest North America (e.g., Rasmussen and Conway, 2004; Brewis, 2012; Tennant and Menounos, 2013). Schiefer et al. (2007) found that over the period 1985–1999, glaciers of the Cariboo Mountains thinned by a rate of  $-0.58 \text{ m w.e. a}^{-1}$  and lost  $-7.06 \text{ km}^3 \text{ w.e.}$  Using our two different methods of extrapolation described in Sect. 3.3, our estimates yield comparable estimates of ice loss ( $-6.24 \pm 1.32 \text{ km}^3$  and  $-7.58 \pm 1.17 \text{ km}^3$ ) for the Cariboo Mountains.

Unlike the period 1985–2005, our methods of extrapolation to Cariboo Mountains glaciers yield significantly different volume change estimates for the period 1952–1985 ( $-4.03 \pm 2.04 \text{ km}^3$  vs.  $-2.31 \pm 2.17 \text{ km}^3$ ). This discrepancy could arise from time-varying magnitude of ice dynamics leading to extrapolation from a small subset performing poorly during epochs with higher surface mass balance and where some glaciers advanced. We recommend further study of extrapolation of regional volume

## Glacier change in the Cariboo Mountains, British Columbia, Canada (1952–2005)

M. J. Beedle et al.

Title Page

Abstract

Introduction

Conclusions

References

Tables

Figures

⏪

⏩

◀

▶

Back

Close

Full Screen / Esc

Printer-friendly Version

Interactive Discussion



change from a subset of glaciers, but with a more robust sample size to better constrain regional variability of surface-elevation change.

#### 4.4 Relations of extent change to glacier morphometry

Glacier surface area is the single morphometric parameter that commonly correlates with extent change (Serandbrei-Barbero et al., 1999; Hoelzle et al., 2003; Paul et al., 2004; Andreassen et al., 2008; Bolch et al., 2010; Paul and Andreassen, 2009). From 1985–2005, we find average relative area change of  $-11.2$ ,  $-9.3$ ,  $-7.5$ ,  $-5.4$ , and  $-5.4\%$  for our five size classes, arranged from smallest to largest (Table 3). Surface area and relative area change during the period 1985–2005 are weakly correlated ( $\rho < 0.1$ ) indicating generally more relative area change for smaller glaciers (Table 5). However, from 1952–1985, a period with reduced rates of recession or advance, this does not apply; average relative area change was  $-2.5$ ,  $+3.4$ ,  $-4.6$ ,  $-9.0$ , and  $-4.1\%$  for the same size classes, and the  $r$  value (not significant) is negative. It appears that the magnitude of glacier change is not simply related to dimensional attributes of a given glacier; they apparently vary with differing climatic regimes.

Studies have typically found no significant correlation among other morphometric parameters and area change (Paul, 2002; Granshaw and Fountain, 2006; Andreassen et al., 2008; Bolch et al., 2010; DeBeer and Sharp, 2009; and Paul and Andreassen, 2009). Other parameters include slope, aspect, and median, minimum, and maximum elevation. We, however, find correlation between slope and absolute area in all periods. Slope correlates with relative area change from 1952–1985, and on a net basis from 1952–2005, but not for the latter period 1985–2005 (Table 5). This relation, indicating that the steeper glaciers lost less absolute and relative surface area, may be spurious, however, as slope is highly correlated with glacier surface area and length (e.g., Hoelzle et al., 2003).

We also find that median, minimum, and maximum glacier elevations (along with elevation range) correlate with area change, but the strength of these associations is not constant through time (Table 5). A study with a larger sample size is required to assess

### Glacier change in the Cariboo Mountains, British Columbia, Canada (1952–2005)

M. J. Beedle et al.

Title Page

Abstract

Introduction

Conclusions

References

Tables

Figures



Back

Close

Full Screen / Esc

Printer-friendly Version

Interactive Discussion



whether the temporal changes we observed in this study are present for other mountain ranges, and how time-variable glacier dynamics might obscure relations between extent change and glacier geometry.

#### 4.5 Relations to climate

5 Mean annual and seasonal temperatures increased from 1952–2005, particularly after 1985, whereas wintertime precipitation slightly decreased (Figs. 9 and 10). It is likely that observed glacier loss resulted from increased (decreased) temperatures (precipitation), a finding in agreement with previous studies for glaciers in the Cariboo Mountains (Luckman et al., 1987; Brewis, 2012). Previous studies implicate rising surface  
10 temperatures as the recent cause for accelerated mass loss of North American glaciers in maritime environments (Rasmussen and Conway, 2004; Arendt et al., 2009). Tennant and Menounos (2013) also observed the role of decreased precipitation for the Columbia Icefield of the Canadian Rocky Mountains.

15 There was little temperature change, or decreased temperatures from 1952–1970 to 1971–1986, but following 1985, temperatures increased in the Cariboo Mountains (Fig. 10). After 1985, increased annual temperature occurred in both the accumulation and ablation seasons, but change during the accumulation season is double that of the ablation season.

20 Precipitation consistently decreased over the three periods of analysis for the accumulation season and annually (Fig. 11). Decreased annual precipitation is primarily an accumulation season phenomenon, whereas average ablation season precipitation negligibly changed. Cool accumulation season temperatures from 1971–1985 may have counteracted decreased precipitation, leading to snow accumulation comparable to that of the period 1952–1970. Some, but not all, glaciers thickened and advanced  
25 between 1952–1985, a result of both individual glacier hypsometry leading to more retained accumulation, and length and slope angle that led to a more rapid terminus response.

### Glacier change in the Cariboo Mountains, British Columbia, Canada (1952–2005)

M. J. Beedle et al.

Title Page

Abstract

Introduction

Conclusions

References

Tables

Figures

◀

▶

◀

▶

Back

Close

Full Screen / Esc

Printer-friendly Version

Interactive Discussion



ClimateWNA records indicate that wetter and cooler periods align with anomalous low-pressure (1952–1970 and 1971–1985), and drier and warmer periods align with anomalous high-pressure (1985–2005) (Fig. 12). Previous studies note high-pressure anomalies over northwest North America after the late-1970s with coincident glacier recession and thinning (e.g., Bitz and Battisti, 1999; Hodge et al., 1998; Rasmussen and Conway, 2004). Our findings for glaciers of the Cariboo Mountains agree with this earlier work and expand the spatial domain of these climate anomalies and how they influenced glacier change during the mid-20th to early-21st centuries.

Glaciers of the Cariboo Mountains will continue to strongly recede for the remainder of the 21st century. Projections suggest annual warming of 1.8°C to 2.7°C above the 1971–2000 mean by the 2050s for the Columbia Basin of BC, an area that includes a portion of the Premier Range (Murdock et al., 2013). Assuming a lapse rate of 0.006°C m<sup>-1</sup>, such warming would result in a rise in the ELA of 300 to 450 m. Given current glacier hypsometry (Fig. 5), an assumed steady-state accumulation-area ratio (AAR) of 60% indicates a present steady-state ELA for Cariboo Mountains glaciers of approximately 2375 m. A rise in the ELA of from 300 to 450 m would reduce the AAR from 60% to between 12 and 5%, leaving glaciers of the Cariboo Mountains grossly out of balance and greatly diminished by the mid-21st century. Such a decline is consistent with the finding for the eastern slopes of the Rocky Mountains that predicts glaciers will lose 80–90% of their volume by 2100 (Marshall et al., 2011).

Previous studies suggest that glaciologists need to further examine intra- and inter-regional mass balance variability (Braithwaite, 2002), and conclude that there are no means of making an a priori selection of a regionally-representative benchmark glacier (Fountain et al., 2009). The paucity of traditional mass-balance and glacier length change measurements limits assessments of regional representativeness. Widespread use of remotely-sensed imagery to derive glacier extents and surface elevation, however, provides a means to document changes of glacier extent and volume change on decadal timescales. We demonstrate that comprehensive glacier inventories and assessments of decadal area and thickness change can be used to make an informed

## Glacier change in the Cariboo Mountains, British Columbia, Canada (1952–2005)

M. J. Beedle et al.

Title Page

Abstract

Introduction

Conclusions

References

Tables

Figures

◀

▶

◀

▶

Back

Close

Full Screen / Esc

Printer-friendly Version

Interactive Discussion



## Glacier change in the Cariboo Mountains, British Columbia, Canada (1952–2005)

M. J. Beedle et al.

Title Page

Abstract

Introduction

Conclusions

References

Tables

Figures

◀

▶

◀

▶

Back

Close

Full Screen / Esc

Printer-friendly Version

Interactive Discussion



a priori selection of a representative subset of glaciers. Regional representativeness will be variable with respect to glacier morphometry, climate and glacier response, however. Selection of benchmark glaciers and representative glacier subsets, as well as testing of the regional representativeness of existing benchmark glaciers (e.g., Fountain et al., 2009) should be based on regional glacier morphometry, recent decadal glacier extent and thickness change, and with respect to varying glacier response in different climatic regimes.

## 5 Conclusions

During the period 1952–2005, glaciers of the Cariboo Mountains receded at a rate of  $0.19 \pm 0.05 \% a^{-1}$ . Slow glacier recession rates characterized the epoch 1952–1985 ( $-0.05 \pm 0.10 \% a^{-1}$ ), and some glaciers advanced. After 1985, glacier recession rates increased eightfold ( $0.41 \pm 0.12 \% a^{-1}$ ). Thinning rates also accelerated from  $-0.143 \pm 0.043 \text{ m w.e. } a^{-1}$  (1952–1985) to  $-0.500 \pm 0.070 \text{ m w.e. } a^{-1}$  from 1985–2005. Temperatures increased from 1952–2005, primarily after 1985, whereas accumulation season precipitation decreased over the period of study, indicating that both increases in temperature and decreases in precipitation explain the observed pattern of glacier change.

The inventory of Bolch et al. (2010) possibly overestimated the recession of Cariboo Mountains glaciers from 1985–2005. For 28 common glaciers, our extents average 2% smaller than the 2005 extents generated with the semi-automated method of Bolch et al. (2010) and 5% smaller than the 1985 extents of the TRIM dataset, likely due to mapping of late-lying seasonal snow as glacierized area in the TRIM dataset.

Our results indicate that relations between glacier change and dimensional attributes of the glaciers of this study are not stable through time; this non-stationarity may be related to ice dynamics and the complex way glaciers respond to changes in surface mass balance.

*Acknowledgements.* We acknowledge research funding provided through the Western Canadian Cryospheric Network (from the Canadian Foundation for Climate and Atmospheric Sciences), Natural Sciences and Engineering Research Council of Canada (NSERC), Pacific Institute for Climate Solutions (Graduate Fellowship to M. Beedle), and University of Northern British Columbia (Graduate Scholarship to M. Beedle). We also thank the Province of British Columbia and Natural Resources Canada for access to aerial photography, Caillin Smith and Tyler Sylvestre for photogrammetric scanning, and Cardinal Systems for providing Vr Mapping software licenses and support. Stephen Déry, Peter Jackson and Andrew Fountain provided comments that significantly improved our analysis and manuscript.

## References

- Abermann, J., Lambrecht, A., Fischer, A., and Kuhn, M.: Quantifying changes and trends in glacier area and volume in the Austrian Ötztal Alps (1969-1997-2006), *The Cryosphere*, 3, 205–215, doi:10.5194/tc-3-205-2009, 2009.
- Andreassen, L. M., Paul, F., Kääb, A., and Hausberg, J. E.: Landsat-derived glacier inventory for Jotunheimen, Norway, and deduced glacier changes since the 1930s, *The Cryosphere*, 2, 131–145, doi:10.5194/tc-2-131-2008, 2008.
- Arendt, A. A., Echelmeyer, K. A., Harrison, W. D., Lingle, C. S., and Valentine, V. B.: Rapid wastage of Alaska glaciers and their contribution to rising sea level, *Science*, 297, 382–385, 2002.
- Arendt, A., Echelmeyer, K., Harrison, W., Lingle, C., Zirnheld, S., Valentine, V., Ritchie, B., and Druckenmiller, M.: Updated estimates of glacier volume changes in the western Chugach Mountains, Alaska, and a comparison of regional extrapolation methods, *J. Geophys. Res.*, 111, F03019, doi:10.1029/2005JF000436, 2006.
- Arendt, A., Walsh, J., and Harrison, W.: Changes of glaciers and climate in northwestern North America during the late 20th century, *J. Climate*, 22, 4117–4134, 2009.
- Bahr, D. B. and Radić, V.: Significant contribution to total mass from very small glaciers, *The Cryosphere*, 6, 763–770, doi:10.5194/tc-6-763-2012, 2012.
- Barrand, N. E., Murray, T., James, T. D., Barr, S. L., and Mills, J. P.: Optimizing photogrammetric DEMs for glacier volume change assessment using laser-scanning derived ground-control points, *J. Glaciol.*, 55, 106–116, 2009.

## Glacier change in the Cariboo Mountains, British Columbia, Canada (1952–2005)

M. J. Beedle et al.

Title Page

Abstract

Introduction

Conclusions

References

Tables

Figures



Back

Close

Full Screen / Esc

Printer-friendly Version

Interactive Discussion



## Glacier change in the Cariboo Mountains, British Columbia, Canada (1952–2005)

M. J. Beedle et al.

Title Page

Abstract

Introduction

Conclusions

References

Tables

Figures

◀

▶

◀

▶

Back

Close

Full Screen / Esc

Printer-friendly Version

Interactive Discussion



- Barrand, N. E., James, T. D., and Murray, T.: Spatio-temporal variability in elevation changes of two high-Arctic valley glaciers, *J. Glaciol.*, 56, 771–780, 2010.
- Beedle, M. J., Menounos, B., Luckman, B. H., and Wheate, R.: Annual push moraines as climate proxy, *Geophys. Res. Lett.*, 36, L20501, doi:10.1029/2009GL039533, 2009.
- 5 Beedle, M. J., Menounos, B., and Wheate, R.: An evaluation of mass balance techniques applied to Castle Creek Glacier, British Columbia, Canada, *J. Glaciol.*, 60, 262–276, 2014.
- Berthier, E., Schiefer, E., Clarke, G. K. C., Menounos, B., and Rémy, F.: Contribution of Alaskan glaciers to sea-level rise derived from satellite imagery, *Nat. Geosci.*, 3, 92–95, doi:10.1038/NGEO737, 2010.
- 10 Bitz, C. M. and Battisti, D. S.: Interannual to decadal variability in climate and the glacier mass balance in Washington, western Canada, and Alaska, *J. Climate*, 12, 3181–3196, 1999.
- Bogdal, C., Schmid, P., Zennegg, M., Anselmetti, F. S., Scheringer, M., and Hunberbühler, K.: Blast from the past: melting glaciers as a relevant source for persistent organic pollutants, *Environ. Sci. Technol.*, 43, 21, 8173–8177, 2009
- 15 Bolch, T., Menounos, B., and Wheate, R.: Landsat-based inventory of glaciers in western Canada, 1985–2005, *Remote Sens. Environ.*, 114, 127–137, 2010.
- Braithwaite, R. J.: Glacier mass balance: the first 50 years of international monitoring, *Prog. Phys. Geog.*, 26, 76–95, 2002.
- Brewis, T. B.: Glacier change and contribution to streamflow in the Canoe Basin, British Columbia, 1948–2005, Master's thesis, University of Northern British Columbia, Prince George, 2012.
- 20 British Columbia (BC) Ministry of Environment: Specifications for Aerial Triangulation. Surveys and Source Mapping, Province of British Columbia, Victoria, BC, 1998.
- Daly, C., Gibson, W. P., Taylor, G. H., Johnson, G. L., and Pasteris, P.: A knowledge-based approach to the statistical mapping of climate, *Climate Res.*, 22, 99–113, 2002.
- 25 DeBeer, C. M. and Sharp, M. J.: Recent changes in glacier area and volume within the southern Canadian Cordillera, *Ann. Glaciol.*, 46, 215–221, 2007.
- DeBeer, C. M. and Sharp, M. J.: Topographic influences on recent changes of very small glaciers in the Monashee Mountains, British Columbia, Canada, *J. Glaciol.*, 55, 1–10, 2009.
- 30 Déry, S. J., Clifton, A., MacLeod, S. and Beedle, M. J.: Blowing snow fluxes in the Cariboo Mountains of British Columbia, Canada, *Arct. Antarct. Alp. Res.*, 42, 188–197, doi:10.1657/1938-4246-42.2.188, 2010.



---

**Glacier change in the Cariboo Mountains, British Columbia, Canada (1952–2005)**

---

M. J. Beedle et al.

---

[Title Page](#)[Abstract](#)[Introduction](#)[Conclusions](#)[References](#)[Tables](#)[Figures](#)[◀](#)[▶](#)[◀](#)[▶](#)[Back](#)[Close](#)[Full Screen / Esc](#)[Printer-friendly Version](#)[Interactive Discussion](#)

Environment Canada: 1981–2010 Climate Normals and Averages, Meteorological Service of Canada, Environment Canada, Ottawa, available at: [http://climate.weather.gc.ca/climate\\_normals/](http://climate.weather.gc.ca/climate_normals/) (last access: 10 January 2013), 2012.

5 Fountain, A. G., Hoffman, M. J., Granshaw, F., and Riedel, J.: The ‘benchmark glacier’ concept – does it work? Lessons from the North Cascade Range, USA, *Ann. Glaciol.*, 50, 163–168, 2009.

Gardner, A. S., Moholdt, G., Wouters, B., Wolken, G. J., Burgess, D. O., Sharp, M. J., Cogley, J. G., Braun, C., and Labine, C.: Sharply increased mass loss from glaciers and ice caps in the Canadian Arctic Archipelago, *Nature*, 473, 357–360, doi:10.1038/nature10089, 2011.

10 Granshaw, F. D. and Fountain, A. G.: Glacier change (1958–1998) in the North Cascades National Park Complex, Washington, USA, *J. Glaciol.*, 52, 251–256, 2006.

Hodge, S. M., Trabant, D. C., Krimmel, R. M., Heinrichs, T. A., March, R. S., and Josberger, E. G.: Climate variations and changes in mass of three glaciers in western North America, *J. Climate*, 11, 2161–2179, 1998.

15 Hoelzle, M., Haeberli, W., Dischl, M., and Peschke, W.: Secular glacier mass balances derived from cumulative glacier length changes, *Global Planet. Change*, 36, 295–306, 2003.

Hood, E., Fellman, J., Spencer, R. G. M., Hernes, P. J., Edwards, R., D’Amore, D., and Scott, D.: Glaciers as a source of ancient and labile organic matter to the marine environment, *Nature*, 462, 1044–1048, doi:10.1038/nature08580, 2009.

20 Jiskoot, H., Curran, C. J., Tessler, D. L., and Shenton, L. R.: Changes in Clemenceau Icefield and Chaba Group glaciers, Canada, related to hypsometry, tributary detachment, length-slope and area-aspect relations, *Ann. Glaciol.*, 50, 133–143, 2009.

Kääb, A. and Vollmer, M.: Surface geometry, thickness changes and flow fields on creeping mountain permafrost: automatic extraction by digital image analysis, *Permafrost Periglac.*, 11, 315–326, 2000.

25 Kääb, A., Paul, F., Maisch, M., Hoelzle, M., and Haeberli, W.: The new remote sensing derived Swiss glacier inventory: II. First results, *Ann. Glaciol.*, 34, 362–366, 2001.

Kalnay, E. M., Kanamitsu, R., Kistler, W., Collins, W., Deaven, D., Gandin, L., Iredell, M., Saha, S., White, G., Woollen, J., Zhu, Y., Chelliah, M., Ebisuzaki, W., Higgins, W., Janowiak, J., Mo, K. C., Ropelewski, C., Wang, J., Leetmaa, A., Jenne, R., and Joseph, D.: The NCEP/NCAR 40-year reanalysis project, *B. Am. Meteorol. Soc.*, 77, 3, 437–471, 1996.

30 Koblet, T., Gärtner-Roer, I., Zemp, M., Jansson, P., Thee, P., Haeberli, W., and Holmlund, P.: Re-analysis of multi-temporal aerial images of Storglaciären, Sweden (1959–99) – Part 1: Deter-

## Glacier change in the Cariboo Mountains, British Columbia, Canada (1952–2005)

M. J. Beedle et al.

Title Page

Abstract

Introduction

Conclusions

References

Tables

Figures



Back

Close

Full Screen / Esc

Printer-friendly Version

Interactive Discussion



mination of length, area, and volume changes, *The Cryosphere*, 4, 333–343, doi:10.5194/tc-4-333-2010, 2010.

Koch, J., Menounos, B., and Clague, J. J.: Glacier change in Garibaldi Provincial Park, southern Coast Mountains, British Columbia, since the Little Ice Age, *Global Planet. Change*, 66, 161–178, 2009.

Luckman, B. H., Harding, K. A., and Hamilton, J. P.: Recent glacier advances in the Premier Range, British Columbia, *Can. J. Earth Sci.*, 24, 1149–1161, 1987.

Mantua, N. J., Hare, S. R., Zhang, Y., Wallace, J. M. and Francis, R. C.: A Pacific interdecadal climate oscillation with impacts on salmon production, *B. Am. Meteorol. Soc.*, 78, 1069–1079, 1997.

Marshall, S. J., White, E. C., Demuth, M. N., Bolch, T., Wheate, R., Menounos, B., Beedle, M. J., and Shea, J. M.: Glacier water resources on the eastern slopes of the Canadian Rocky Mountains, *Can. Water Resour. J.*, 36, 109–134, 2011.

Maurer, M. K., Menounos, B., Luckman, B. H., Osborn, G., Clague, J. J., Beedle, M. J., Smith, R., and Atkinson, N.: Late Holocene glacier expansion in the Cariboo and northern Rocky Mountains, British Columbia, Canada, *Quaternary Sci. Rev.*, 51, 71–80, 2012.

Menounos, B., Osborn, G., Clague, J., and Luckman, B.: Latest Pleistocene and Holocene glacier fluctuations in western Canada, *Quaternary Sci. Rev.*, 28, 2049–2074, 2009.

Mitchell, T. D. and Jones, P. D.: An improved method of constructing a database of monthly climate observations and associated high-resolution grids, *Int. J. Climatol.*, 25, 693–712, 2005.

Moore, R. D., Fleming, S. W., Menounos, B., Wheate, R., Fountain, A., Stahl, K., Holm, K., and Jakob, M.: Glacier change in western North America: influences on hydrology, geomorphic hazards and water quality, *Hydrol. Process.*, 24, 42–61, 2009.

Murdock, T. Q., Sobie, S. R., Zwiers, F. W., and Eckstrand, H. D.: Climate change and extremes in the Canadian Columbia Basin, *Atmos. Ocean*, 51, 456–469, doi:10.1080/07055900.2013.816932, 2013.

Paul, F.: Changes in glacier area in Tyrol, Austria, between 1969 and 1992 derived from Landsat 5 Thematic Mapper and Austrian Glacier Inventory data, *Int. J. Remote Sensing*, 23, 787–799, 2002.

Paul, F. and Andreassen, L. M.: A new glacier inventory for the Svartisen region, Norway, from Landsat ETM+ data: challenges and change assessment, *J. Glaciol.*, 55, 607–618, 2009.

**Glacier change in the  
Cariboo Mountains,  
British Columbia,  
Canada (1952–2005)**

M. J. Beedle et al.

Title Page

Abstract

Introduction

Conclusions

References

Tables

Figures

◀

▶

◀

▶

Back

Close

Full Screen / Esc

Printer-friendly Version

Interactive Discussion



Paul, F. and Haeberli, W.: Spatial variability of glacier elevation changes in the Swiss Alps obtained from two digital elevation models, *Geophys. Res. Lett.*, 35, L21502, doi:10.1029/2008GL034718, 2008.

Paul, F., Kääb, A., Maisch, M., Kellenberger, T., and Haeberli, W.: Rapid disintegration of Alpine glaciers observed with satellite data, *Geophys. Res. Lett.*, 31, L21402, doi:10.1029/2004GL020816, 2004.

Radić, V. and Hock, R.: Regionally differentiated contribution of mountain glaciers and ice caps to future sea-level rise, *Nat. Geosci.*, 4, 91–94, doi:10.1038/NCEO1052, 2011.

Rasmussen, L. A. and Conway, H.: Climate and glacier variability in western North America, *J. Climate*, 17, 1804–1815, 2004.

Rolstad, C., Haug, T., and Denby, B.: Spatially integrated geodetic glacier mass balance and its uncertainty based on geostatistical analysis: application to the western Svartisen ice cap, *J. Glaciol.*, 55, 666–680, 2009.

Sapiano, J. J., Harrison, W. D., and Echelmeyer, K. A.: Elevation, volume and terminus changes in nine glaciers in North America, *J. Glaciol.*, 44, 119–135, 1998.

Schiefer, E. and Gilbert, R.: Reconstructing morphometric change in a proglacial landscape using historical aerial photography and automated DEM generation, *Geomorphology*, 88, 167–178, 2007.

Schiefer, E., Menounos, B., and Wheate, R.: Recent volume loss of British Columbia glaciers, Canada, *Geophys. Res. Lett.*, 34, L16503, doi:10.1029/2007GL030780, 2007.

Schiefer, E., Menounos, B., and Wheate, R.: An inventory and morphometric analysis of British Columbia glaciers, Canada, *J. Glaciol.*, 54, 551–560, 2008.

Serandbrei-Barbero, R., Rabagliati, R., Binaghi, E., and Rampini, A.: Glacial retreat in the 1980s in the Breonie, Aurine and Pusteresi groups (eastern Alps, Italy) in Landsat TM images, *Hydrolog. Sci. J.*, 44, 279–296, 1999.

Tennant, C. and Menounos, B.: Glacier change of the Columbia Icefield, Canadian Rocky Mountains, 1919–2009, *J. Glaciol.*, 59, 671–686, doi:10.3189/2013JoG12J135, 2013.

Tennant, C., Menounos, B., Wheate, R., and Clague, J. J.: Area change of glaciers in the Canadian Rocky Mountains, 1919 to 2006, *The Cryosphere*, 6, 1541–1552, doi:10.5194/tc-6-1541-2012, 2012.

Wang, T., Hamann, A., Spittlehouse, D., and Murdock, T. N.: ClimateWNA – high-resolution spatial climate data for western North America, *J. Appl. Meteorol. Clim.*, 61, 16–29, 2012.

## Glacier change in the Cariboo Mountains, British Columbia, Canada (1952–2005)

M. J. Beedle et al.

[Title Page](#)

[Abstract](#)

[Introduction](#)

[Conclusions](#)

[References](#)

[Tables](#)

[Figures](#)

⏪

⏩

◀

▶

[Back](#)

[Close](#)

[Full Screen / Esc](#)

[Printer-friendly Version](#)

[Interactive Discussion](#)



**Table 1.** Aerial photography used to derive glacier extent and thickness change data.

Date	Region	Roll ID	# of Images	Scale	Resolution (m)	Contrast	Snowcover
10 Sep 1946	C	BC320	15	1:31 680	0.38	Poor	Good
25 Sep 1952	C	A13538	5	1:60 000	0.84	Fair	Good
9 Sep 1952	Q	A13538	5	1:60 000	0.84	Fair	Good
30 Aug 1955	P	A14930	7	1:70 000	0.98	Poor	Fair
15 Aug 1967	C	BC7019	15	1:15 840	0.19	Good	Fair
19 Aug 1970	P	BC5394	5	1:80 000	0.96	Fair	Good
15 Jul 1971	Q	A21587	4	1:80 000	1.12	Poor	Fair
24 Jul 1977	C	A24743	8	1:70 000	0.98	Poor	Poor
31 Jul 1984	C	BC84073	4	1:60 000	0.72	Fair	Fair
16 Aug 1985	Q	BC85071	5	1:60 000	0.72	Fair	Fair
16 Aug 1985	Q, P	BC85075	7	1:60 000	0.72	Fair	Fair
11 Sep 1996	C	BCB96106	6	1:40 000	0.48	Poor	Fair
25 Aug 2005	C	BCC05111	10	1:20 000	0.24	Good	Good
25 Aug 2005	P	BCC05108	18	1:20 000	0.24	Good	Good
25 Aug 2005	Q, P	BCC05109	16	1:20 000	0.24	Good	Good
25 Aug 2005	Q	BCC05110	6	1:20 000	0.24	Good	Good

Regions: C: Castle Creek, Q: Quanstrom, P: Premier Range.

Roll ID: BC: provincial aerial photos, A: federal aerial photos.

Contrast: subjective determination of image contrast on a scale from poor to excellent.

Snowcover: subjective determination of snowcover extent. Poor refers to more snowcover.

## Glacier change in the Cariboo Mountains, British Columbia, Canada (1952–2005)

M. J. Beedle et al.

**Table 2.** Morphometric properties of the 33-glacier subset.

Id (Name)	Region	Length (m)	Area (km <sup>2</sup> )	Slope	Aspect	Mean Z (m)	Median Z (m)	Min. Z (m)	Max. Z (m)	Range Z (m)
1	C	513	0.109	22.7	E	2472	2471	2360	2590	230
2	P	452	0.135	19.5	W	2587	2593	2469	2682	213
3	P	641	0.155	27.5	NE	2607	2619	2413	2785	372
4	P	779	0.210	18.0	N	2485	2480	2379	2651	272
5	P	922	0.264	21.1	N	2523	2528	2324	2718	394
6	Q	731	0.276	22.2	SE	2532	2545	2256	2692	436
7	Q	952	0.422	21.3	NW	2386	2383	2228	2621	393
8	Q	1366	0.563	18.3	N	2283	2279	2093	2494	401
9	P	1386	0.648	25.7	NW	2420	2415	2117	2968	851
10	P	1552	0.650	26.6	NE	2406	2400	1990	2751	761
11	C	1173	0.653	21.2	SE	2452	2445	2246	2733	487
12	P	1671	0.830	21.6	N	2399	2407	2169	2646	477
13	C	1017	0.860	20.7	NE	2363	2343	2135	2720	585
14	C	1419	0.913	16.2	NE	2322	2314	2175	2580	405
15	P	1327	0.983	23.8	NE	2665	2662	2248	3157	909
16	P	2027	0.995	24.5	NW	2699	2716	2171	3093	922
17	P	1584	1.145	26.7	S	2728	2724	2313	3188	875
18	Q	1209	1.349	16.7	E	2362	2364	2172	2515	343
19	Q	2199	1.609	10.8	SE	2469	2478	2187	2633	446
20	C	1870	1.816	18.5	E	2387	2398	2044	2749	705
21	Q	1796	2.188	15.7	S	2421	2449	2052	2669	617
22	Q	2965	2.464	12.3	N	2438	2436	2198	2803	605
23	Q	3002	2.655	18.5	N	2482	2490	2054	3019	965
24	Q	3562	3.049	17.3	NW	2352	2359	1991	2789	798
25	Q	2300	4.280	14.9	N	2463	2488	2061	2752	691
26	Q	3294	4.625	11.9	NW	2417	2425	2137	2708	571
27	Q	3062	7.037	12.8	NE	2416	2408	2056	2917	861
28 (Castle Creek)	C	5875	9.645	11.1	NE	2387	2397	1881	2827	946
29 (Tête)	P	5971	12.674	16.9	N	2520	2565	1649	3357	1708
30 (David)	P	5228	13.533	19.3	SW	2609	2616	1352	3339	1987
31	Q	4010	14.782	13.2	NE	2319	2334	1868	2745	877
32 (Kiwa)	P	9597	17.154	17.2	N	2617	2705	1491	3509	2018
33	C	7302	19.094	12.8	N	2273	2288	1803	2910	1107

Slope and elevation data from TRIM DEM and 2005 extent.

Length and area data from 2005 extent.

Title Page

Abstract

Introduction

Conclusions

References

Tables

Figures

◀

▶

◀

▶

Back

Close

Full Screen / Esc

Printer-friendly Version

Interactive Discussion



**Table 3.** Glacier extent and area change data for glaciers and summed by subregion and size class.

Id	Region	Extent				Successive periods						Cumulative periods			
		Area 1952 (km <sup>2</sup> )	Area 1970 (km <sup>2</sup> )	Area 1985 (km <sup>2</sup> )	Area 2005 (km <sup>2</sup> )	Area change 1952–1970 (km <sup>2</sup> )	Area change 1952–1970 (%)	Area change 1970–1985 (km <sup>2</sup> )	Area change 1970–1985 (%)	Area change 1985–2005 (km <sup>2</sup> )	Area change 1985–2005 (%)	Area change 1952–1985 (km <sup>2</sup> )	Area change 1952–1985 (%)	Area Change 1952–2005 (km <sup>2</sup> )	Area change 1952–2005 (%)
1	C	0.117	No data	0.131	0.109	No data	No data	No data	No data	-0.022	-16.8	<b>0.014</b>	<b>12.0</b>	-0.008	-6.8
2	P	0.137	No data	0.136	0.135	No data	No data	No data	No data	-0.001	-0.7	-0.001	-0.7	-0.002	-1.5
3	P	0.157	0.158	0.161	0.155	0.001	0.6	0.003	1.9	-0.006	-3.7	0.004	2.5	-0.002	-1.3
4	P	0.301	0.298	0.269	0.210	-0.003	-1.0	-0.029	-9.7	-0.059	-21.9	-0.032	-10.6	-0.091	-30.2
5	P	0.283	0.310	0.303	0.264	<b>0.027</b>	<b>9.5</b>	-0.007	-2.3	-0.039	-12.9	<b>0.020</b>	<b>7.1</b>	-0.019	-6.7
6	Q	0.284	No data	0.291	0.276	No data	No data	No data	No data	-0.015	-5.2	0.007	2.5	-0.008	-2.8
7	Q	0.536	No data	0.478	0.422	No data	No data	No data	No data	-0.056	-11.7	-0.058	-10.8	-0.114	-21.3
8	Q	0.775	No data	0.626	0.563	No data	No data	No data	No data	-0.063	-10.1	-0.149	-19.2	-0.212	-27.4
9	P	0.662	0.728	0.709	0.648	<b>0.066</b>	<b>10.0</b>	-0.019	-2.6	-0.061	-8.6	<b>0.047</b>	<b>7.1</b>	-0.014	-2.1
10	P	0.665	0.700	0.707	0.650	0.035	5.3	0.007	1.0	-0.057	-8.1	<b>0.042</b>	<b>6.3</b>	-0.015	-2.3
11	C	0.682	0.746	0.785	0.653	0.064	9.4	<b>0.039</b>	<b>5.2</b>	-0.132	-16.8	<b>0.103</b>	<b>15.1</b>	-0.029	-4.3
12	P	0.853	0.858	0.991	0.830	0.005	0.6	<b>0.133</b>	<b>15.5</b>	-0.161	-16.2	<b>0.138</b>	<b>16.2</b>	-0.023	-2.7
13	C	1.070	1.109	0.918	0.860	0.039	3.6	-0.191	-17.2	-0.058	-6.3	-0.152	-14.2	-0.210	-19.6
14	C	1.272	1.235	No data	0.913	-0.037	-2.9	No data	No data	No data	No data	No data	No data	-0.359	-28.2
15	P	1.003	1.030	1.012	0.983	0.027	2.7	-0.018	-1.7	-0.029	-2.9	0.009	0.9	-0.020	-2.0
16	P	1.056	1.093	1.074	0.995	0.037	3.5	-0.019	-1.7	-0.079	-7.4	0.018	1.7	-0.061	-5.8
17	P	1.166	1.244	1.235	1.145	<b>0.078</b>	<b>6.7</b>	-0.009	-0.7	-0.090	-7.3	<b>0.069</b>	<b>5.9</b>	-0.021	-1.8
18	Q	1.432	1.436	1.444	1.349	0.004	0.3	0.008	0.6	-0.095	-6.6	0.012	0.8	-0.083	-5.8
19	Q	1.767	1.759	1.757	1.609	-0.008	-0.5	-0.002	-0.1	-0.148	-8.4	-0.010	-0.6	-0.158	-8.9
20	C	1.833	1.874	1.854	1.816	0.041	2.2	-0.020	-1.1	-0.038	-2.0	0.021	1.1	-0.017	-0.9
21	Q	2.199	2.248	2.287	2.188	0.049	2.2	0.039	1.7	-0.099	-4.3	<b>0.088</b>	<b>4.0</b>	-0.011	-0.5
22	Q	3.609	2.771	2.702	2.464	-0.838	-23.2	-0.069	-2.5	-0.238	-8.8	-0.907	-25.1	-1.145	-31.7
23	Q	3.464	3.154	3.068	2.655	-0.310	-8.9	-0.086	-2.7	-0.413	-13.5	-0.396	-11.4	-0.809	-23.4
24	Q	3.393	3.317	3.323	3.049	-0.076	-2.2	0.006	0.2	-0.274	-8.2	-0.070	-2.1	-0.344	-10.1
25	Q	4.440	4.582	4.555	4.280	<b>0.142</b>	<b>3.2</b>	-0.027	-0.6	-0.275	-6.0	<b>0.115</b>	<b>2.6</b>	-0.160	-3.6
26	Q	5.584	No data	5.156	4.625	No data	No data	No data	No data	-0.531	-10.3	-0.428	-7.7	-0.959	-17.2
27	Q	8.119	7.428	7.424	7.037	-0.691	-8.5	-0.004	-0.1	-0.387	-5.2	-0.695	-8.6	-1.082	-13.3
28	C	11.257	10.838	10.206	9.645	-0.419	-3.7	-0.632	-5.8	-0.561	-5.5	-1.051	-9.3	-1.612	-14.3
29	P	13.296	13.303	13.253	12.674	0.007	0.1	-0.050	-0.4	-0.579	-4.4	-0.043	-0.3	-0.622	-4.7
30	P	13.711	13.821	13.894	13.533	0.110	0.8	0.073	0.5	-0.361	-2.6	0.183	1.3	-0.178	-1.3
31	Q	18.592	17.688	16.796	14.782	-0.904	-4.9	-0.892	-5.0	-2.014	-12.0	-1.796	-9.7	-3.810	-20.5
32	P	18.234	18.042	17.661	17.154	-0.192	-1.1	-0.381	-2.1	-0.507	-2.9	-0.573	-3.1	-1.080	-5.9
33	C	21.283	20.446	20.038	19.094	-0.837	-3.9	-0.408	-2.0	-0.944	-4.7	-1.245	-5.8	-2.189	-10.3
All		141.960	No data	135.244	126.852	No data	No data	No data	No data	-8.392	-6.2	-6.716	-4.7	-15.108	-10.6
C		36.125	35.013	33.801	32.068	-1.112	-3.1	-1.212	-3.5	-1.733	-5.1	-2.324	-6.4	-4.057	-11.2
Q		54.194	No data	49.907	45.299	No data	No data	No data	No data	-4.608	-9.2	-4.287	-7.9	-8.895	-16.4
P		51.387	51.585	51.269	49.241	0.198	0.4	-0.316	-0.6	-2.028	-4.0	-0.118	-0.2	-2.146	-4.2
0.1–0.5 km <sup>2</sup>		1.815	No data	1.769	1.571	No data	No data	No data	No data	-0.198	-11.2	-0.046	-2.5	-0.244	-13.4
0.5–1.0 km <sup>2</sup>		5.991	6.264	6.196	5.619	<b>0.273</b>	<b>4.6</b>	-0.068	-1.1	-0.577	-9.3	0.205	3.4	-0.372	-6.2
1.0–5.0 km <sup>2</sup>		23.303	22.385	22.225	20.555	-0.918	-3.9	-0.160	-0.7	-1.670	-7.5	-1.078	-4.6	-2.748	-11.8
5.0–10 km <sup>2</sup>		19.376	18.266	17.630	16.682	-1.110	-5.7	-0.636	-3.5	-0.948	-5.4	-1.746	-9.0	-2.694	-13.9
10–50 km <sup>2</sup>		85.116	83.300	81.642	77.237	-1.816	-2.1	-1.658	-2.0	-4.405	-5.4	-3.474	-4.1	-7.879	-9.3

Values in bold indicate glacier advance, values in italics indicate recession (beyond margin of error).

Extents summed by size class are based on 2005 extent.

Summed extents and area change may omit some individual glaciers: All: 18, C: 5 and 18, Q: none, P: 2, 0.1–0.5: none, 0.5–1.0: 8 and 18, 1.0–5.0: none, 5.0–10: none, 10–50: none.

## Glacier change in the Cariboo Mountains, British Columbia, Canada (1952–2005)

M. J. Beedle et al.

Title Page

Abstract

Introduction

Conclusions

References

Tables

Figures

⏪

⏩

⏴

⏵

Back

Close

Full Screen / Esc

Printer-friendly Version

Interactive Discussion



## Glacier change in the Cariboo Mountains, British Columbia, Canada (1952–2005)

M. J. Beedle et al.

**Table 4.** Median glacier morphometry for glaciers that underwent some advance, receded continuously, or exhibited no discernable change during the period 1952–1985.

	Count	Length (m)	Area (km <sup>2</sup> )	Slope	Median Z (m)	Min. Z (m)	Max. Z (m)	Range Z (m)
Advance	9	1552	0.653	21.6	2449	2169	2733	617
Retreat	12	3032	3.640	15.2	2403	2075	2774	733
No Change	11	1949	1.406	20.8	2605	2210	2941	794

[Title Page](#)
[Abstract](#)
[Introduction](#)
[Conclusions](#)
[References](#)
[Tables](#)
[Figures](#)
[Back](#)
[Close](#)
[Full Screen / Esc](#)
[Printer-friendly Version](#)
[Interactive Discussion](#)


## Glacier change in the Cariboo Mountains, British Columbia, Canada (1952–2005)

M. J. Beedle et al.

**Table 5.** Correlation table (Pearson-product moment) of relations of glacier area change with respect to glacier morphometry for three periods.

		Length	Area	Slope	Median Z	Min Z	Max Z	Range
1952–1985	Absolute Area Change	<b>-0.556</b>	<b>-0.650</b>	<b>0.598</b>	<b>0.358</b>	0.322	-0.065	-0.215
1952–1985	Relative Area Change	-0.235	-0.210	<b>0.518</b>	0.323	0.135	0.053	-0.046
1985–2005	Absolute Area Change	<b>-0.596</b>	<b>-0.765</b>	<b>0.523</b>	0.260	<b>0.513</b>	-0.193	<b>-0.393</b>
1985–2005	Relative Area Change	0.328	0.316	-0.060	0.282	<b>-0.364</b>	<b>0.412</b>	<b>0.431</b>
1952–2005	Absolute Area Change	<b>-0.597</b>	<b>-0.731</b>	<b>0.582</b>	0.312	<b>0.427</b>	-0.131	-0.309
1952–2005	Relative Area Change	-0.008	0.011	<b>0.440</b>	<b>0.487</b>	-0.087	0.310	0.221

Correlation coefficients in bold are significant ( $p < 0.05$ ).

$n = 32$  for the periods 1950s–1985 and 1985–2005.

$n = 33$  for the period 1950s–2005.

[Title Page](#)
[Abstract](#)
[Introduction](#)
[Conclusions](#)
[References](#)
[Tables](#)
[Figures](#)
[Back](#)
[Close](#)
[Full Screen / Esc](#)
[Printer-friendly Version](#)
[Interactive Discussion](#)




## Glacier change in the Cariboo Mountains, British Columbia, Canada (1952–2005)

M. J. Beedle et al.

Title Page

Abstract

Introduction

Conclusions

References

Tables

Figures

◀

▶

◀

▶

Back

Close

Full Screen / Esc

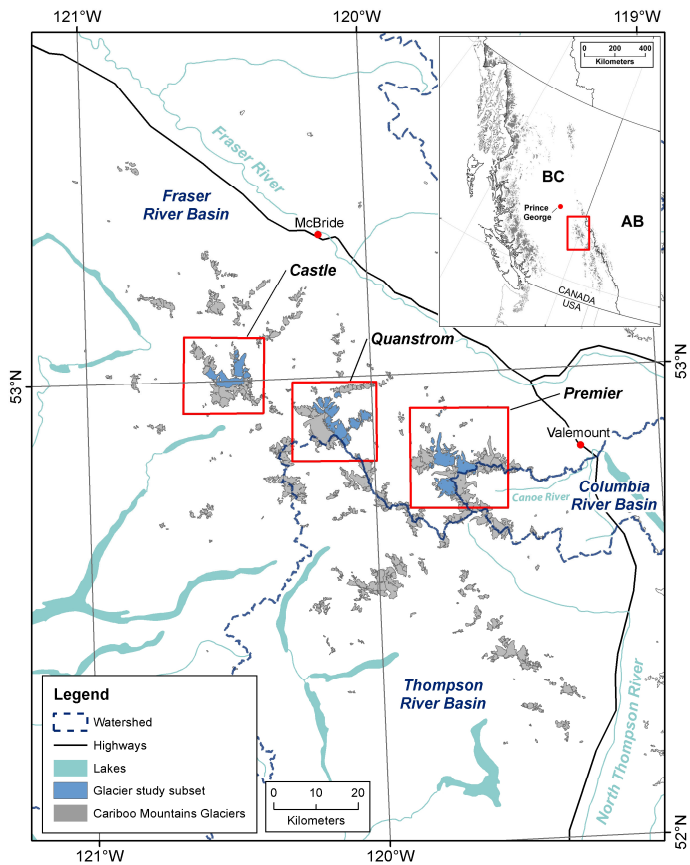
Printer-friendly Version

Interactive Discussion



**Table 6.** Average annual thickness change in meters of water equivalent.

Glacier Id	Thickness change 1952–1985 (m w.e. a <sup>-1</sup> )	Thickness change 1985–2005 (m w.e. a <sup>-1</sup> )	Thickness change 1952–2005 (m w.e. a <sup>-1</sup> )
1	0.56 ± 0.15	-0.87 ± 0.15	-0.04 ± 0.06
11	0.27 ± 0.07	-0.57 ± 0.08	-0.00 ± 0.04
19	-0.09 ± 0.16	-0.82 ± 0.22	-0.39 ± 0.14
24	-0.10 ± 0.22	-0.12 ± 0.22	-0.20 ± 0.18
26	-0.02 ± 0.25	-0.41 ± 0.30	-0.14 ± 0.21
28	-0.08 ± 0.06	-0.59 ± 0.08	-0.22 ± 0.04
31	-0.24 ± 0.20	-0.44 ± 0.23	-0.27 ± 0.17



**Figure 1.** Study area: the three red rectangles indicate subregions in this study (Castle, Quanstrom, and Premier) and the location of the three maps in Fig. 2.

Glacier change in the Cariboo Mountains, British Columbia, Canada (1952–2005)

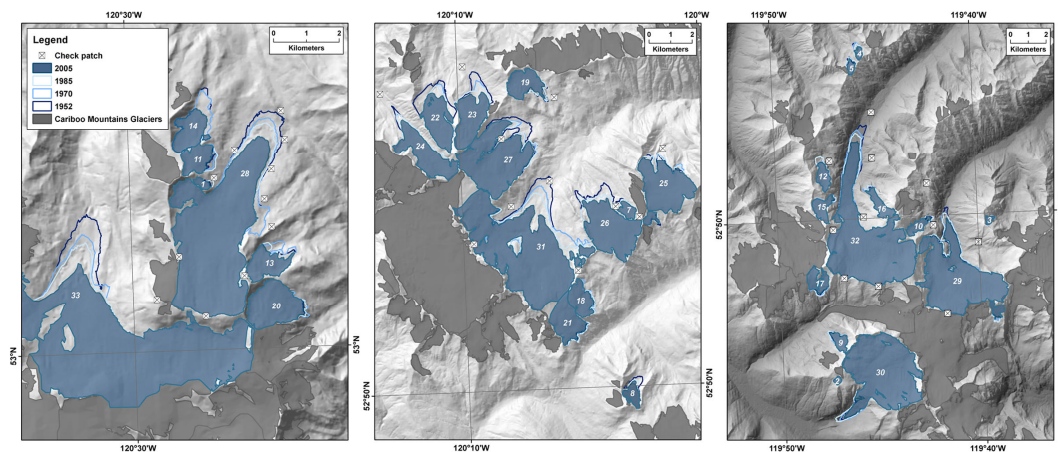
M. J. Beedle et al.

Title Page	
Abstract	Introduction
Conclusions	References
Tables	Figures
◀	▶
◀	▶
Back	Close
Full Screen / Esc	
Printer-friendly Version	
Interactive Discussion	



## Glacier change in the Cariboo Mountains, British Columbia, Canada (1952–2005)

M. J. Beedle et al.



**Figure 2.** Cariboo Mountains subregions showing subset of 33 glaciers, including extents for 1952, 1970, 1985, and 2005. Panels show from left to right the Castle, Quanstrom, and Premier subregions. Numerical glacier identification, numbered by 2005 surface area from smallest to largest, corresponds to that of Tables 2 and 4.

Title Page

Abstract

Introduction

Conclusions

References

Tables

Figures

◀

▶

◀

▶

Back

Close

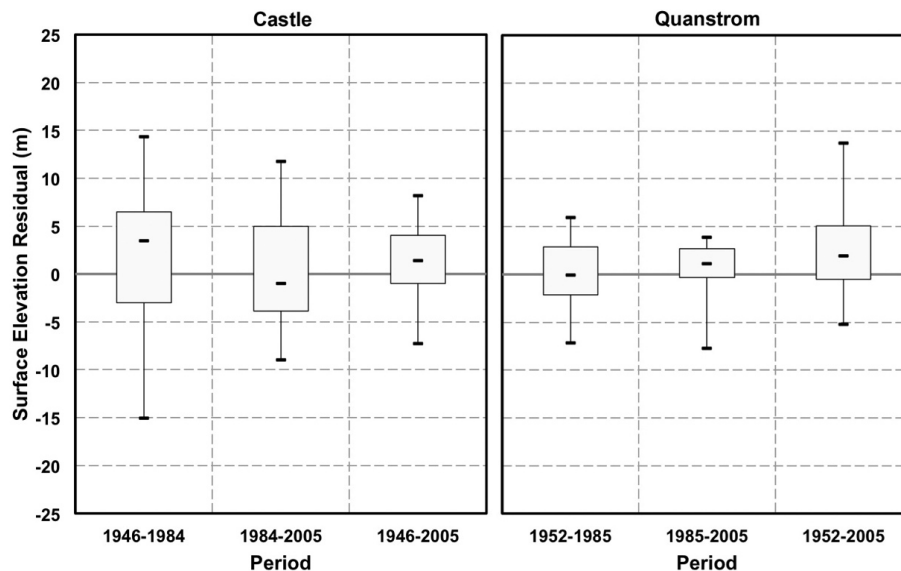
Full Screen / Esc

Printer-friendly Version

Interactive Discussion

## Glacier change in the Cariboo Mountains, British Columbia, Canada (1952–2005)

M. J. Beedle et al.



**Figure 3.** Box-and-whisker plots showing the maximum, interquartile range, median, and minimum of surface elevation residuals of 275 checkpoints. Checkpoints are used to determine relative accuracy of stereo models and bias correction for measurement of surface elevation change of glaciers in the Castle and Quanstrom regions in three periods.

Title Page

Abstract

Introduction

Conclusions

References

Tables

Figures

◀

▶

◀

▶

Back

Close

Full Screen / Esc

Printer-friendly Version

Interactive Discussion



## Glacier change in the Cariboo Mountains, British Columbia, Canada (1952–2005)

M. J. Beedle et al.

Title Page

Abstract

Introduction

Conclusions

References

Tables

Figures



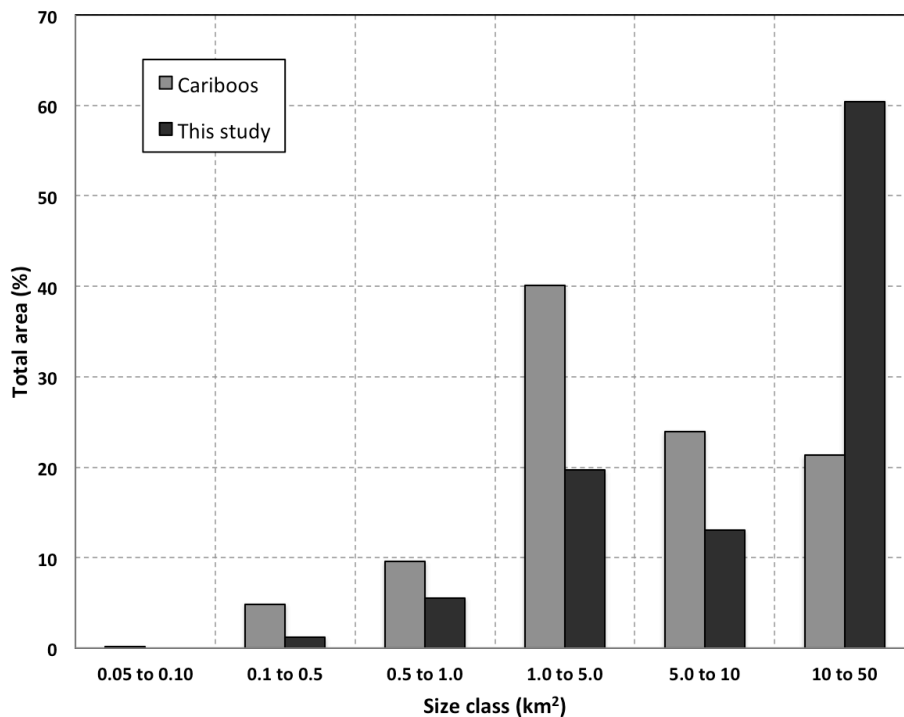
Back

Close

Full Screen / Esc

Printer-friendly Version

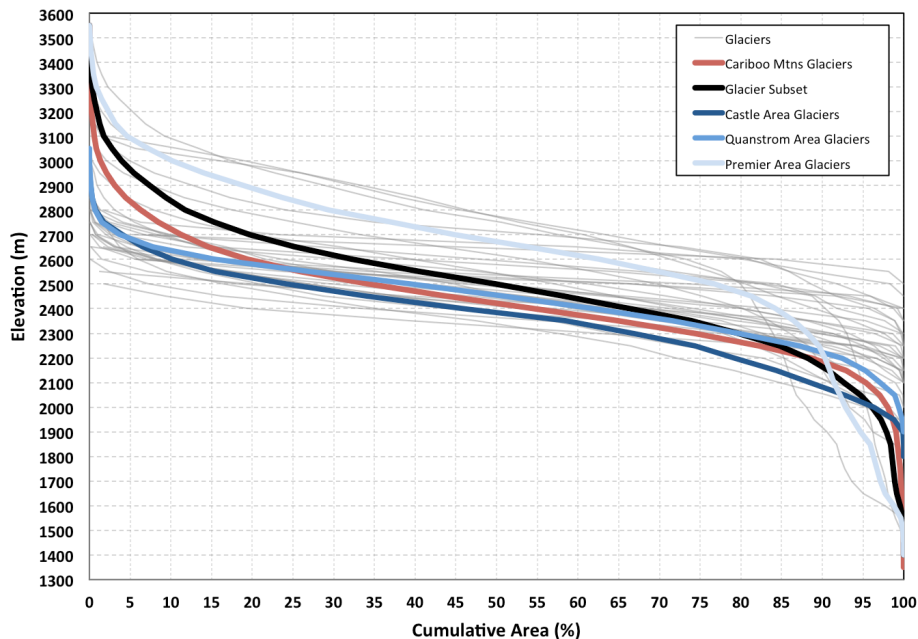
Interactive Discussion



**Figure 4.** Fraction of total glacierized extent by size class for all Cariboo Mountains glaciers (gray) and this study (black).

## Glacier change in the Cariboo Mountains, British Columbia, Canada (1952–2005)

M. J. Beedle et al.



**Figure 5.** Hypsometries for our subset of glaciers (gray), average subset hypsometry (black), all Cariboo Mountains glaciers (red), and the Castle, Quanstrom, and Premier subregions (darker to lighter blue respectively).

Title Page

Abstract

Introduction

Conclusions

References

Tables

Figures

◀

▶

◀

▶

Back

Close

Full Screen / Esc

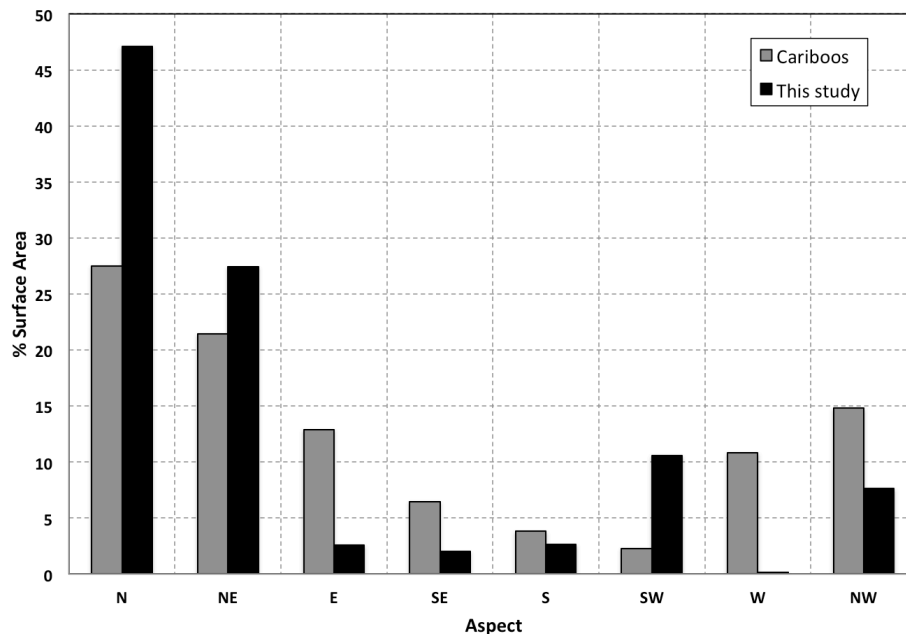
Printer-friendly Version

Interactive Discussion



**Glacier change in the Cariboo Mountains, British Columbia, Canada (1952–2005)**

M. J. Beedle et al.



**Figure 6.** Fraction of total surface by aspect for all Cariboo Mountains glaciers (black) and our subset (gray).

[Title Page](#)

[Abstract](#) | [Introduction](#)

[Conclusions](#) | [References](#)

[Tables](#) | [Figures](#)

[◀](#) | [▶](#)

[◀](#) | [▶](#)

[Back](#) | [Close](#)

[Full Screen / Esc](#)

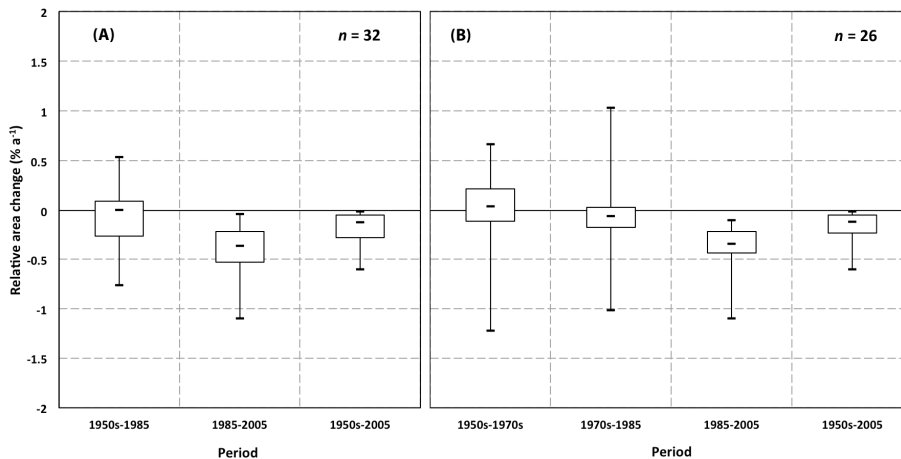
[Printer-friendly Version](#)

[Interactive Discussion](#)



## Glacier change in the Cariboo Mountains, British Columbia, Canada (1952–2005)

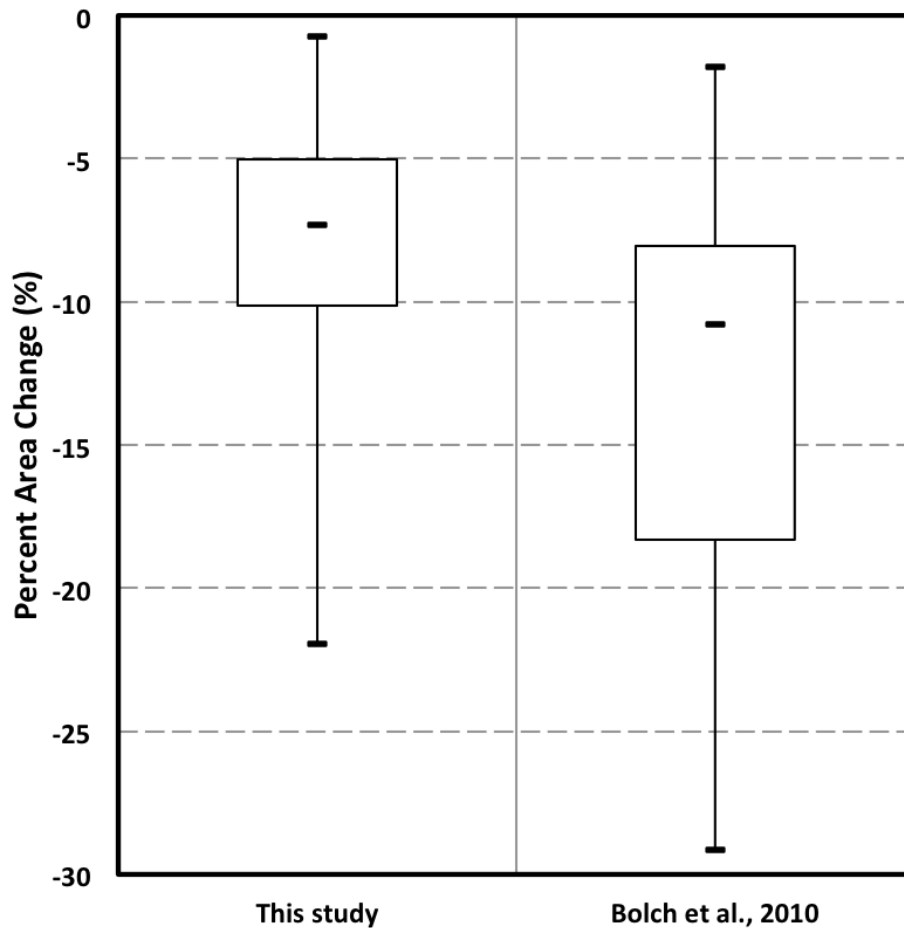
M. J. Beedle et al.



**Figure 7.** Box-and-whisker plots displaying maximum, interquartile range, median and minimum of average annual rates of relative area change for **(A)** 32 glaciers for three periods, and **(B)** for 26 individual glaciers for four periods.

[Title Page](#)[Abstract](#)[Introduction](#)[Conclusions](#)[References](#)[Tables](#)[Figures](#)[⏪](#)[⏩](#)[◀](#)[▶](#)[Back](#)[Close](#)[Full Screen / Esc](#)[Printer-friendly Version](#)[Interactive Discussion](#)





**Figure 8.** Box-and-whisker plots showing the maximum, interquartile range, median, and minimum percent area change for 28 glaciers from 1985 to 2005 for this study and that of Bolch et al. (2010).

**Glacier change in the Cariboo Mountains, British Columbia, Canada (1952–2005)**

M. J. Beedle et al.

[Title Page](#)

[Abstract](#) | [Introduction](#)

[Conclusions](#) | [References](#)

[Tables](#) | [Figures](#)

[◀](#) | [▶](#)

[◀](#) | [▶](#)

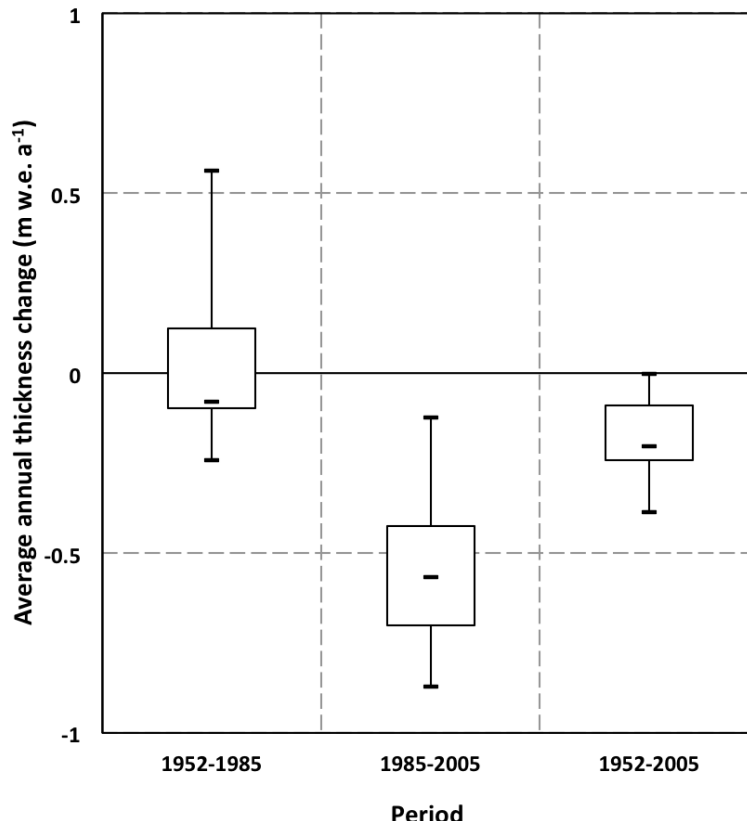
[Back](#) | [Close](#)

[Full Screen / Esc](#)

[Printer-friendly Version](#)

[Interactive Discussion](#)





**Figure 9.** Box-and-whisker plots display maximum, interquartile range, median, and minimum of average annual thickness change in meters of water equivalent of seven glaciers for three periods.

Glacier change in the Cariboo Mountains, British Columbia, Canada (1952–2005)

M. J. Beedle et al.

Title Page

Abstract Introduction

Conclusions References

Tables Figures

◀ ▶

◀ ▶

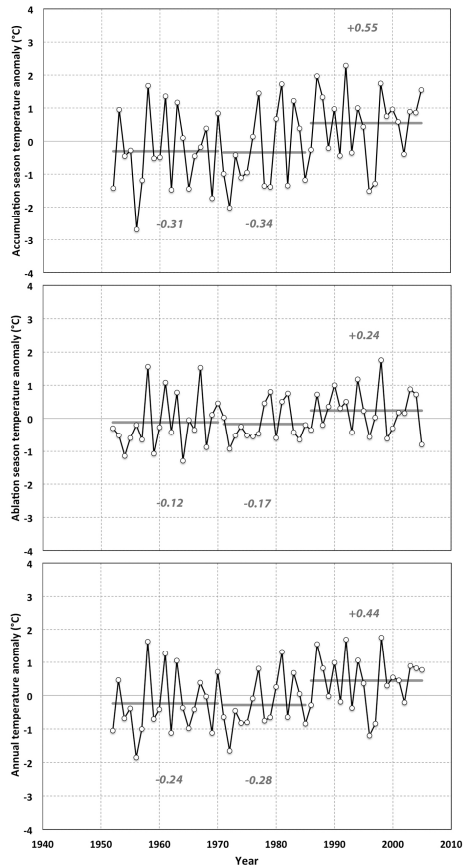
Back Close

Full Screen / Esc

Printer-friendly Version

Interactive Discussion





**Figure 10.** ClimateWNA temperature records of deviation from the long-term (1952–2005) mean of **(A)** average accumulation season temperature, **(B)** average ablation season temperature, and **(C)** average annual temperature. Gray bars and values indicate averages for the periods 1952–1970, 1970–1985, and 1985–2005.

**Glacier change in the Cariboo Mountains, British Columbia, Canada (1952–2005)**

M. J. Beedle et al.

Title Page

Abstract Introduction

Conclusions References

Tables Figures

◀ ▶

◀ ▶

Back Close

Full Screen / Esc

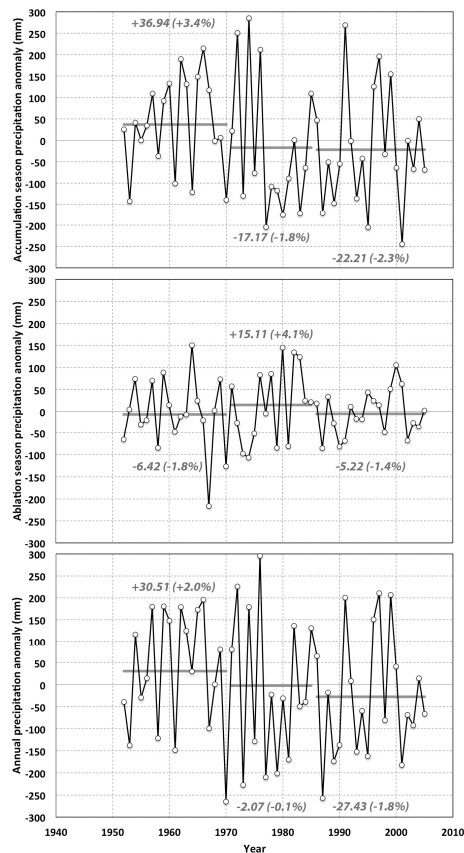
Printer-friendly Version

Interactive Discussion



## Glacier change in the Cariboo Mountains, British Columbia, Canada (1952–2005)

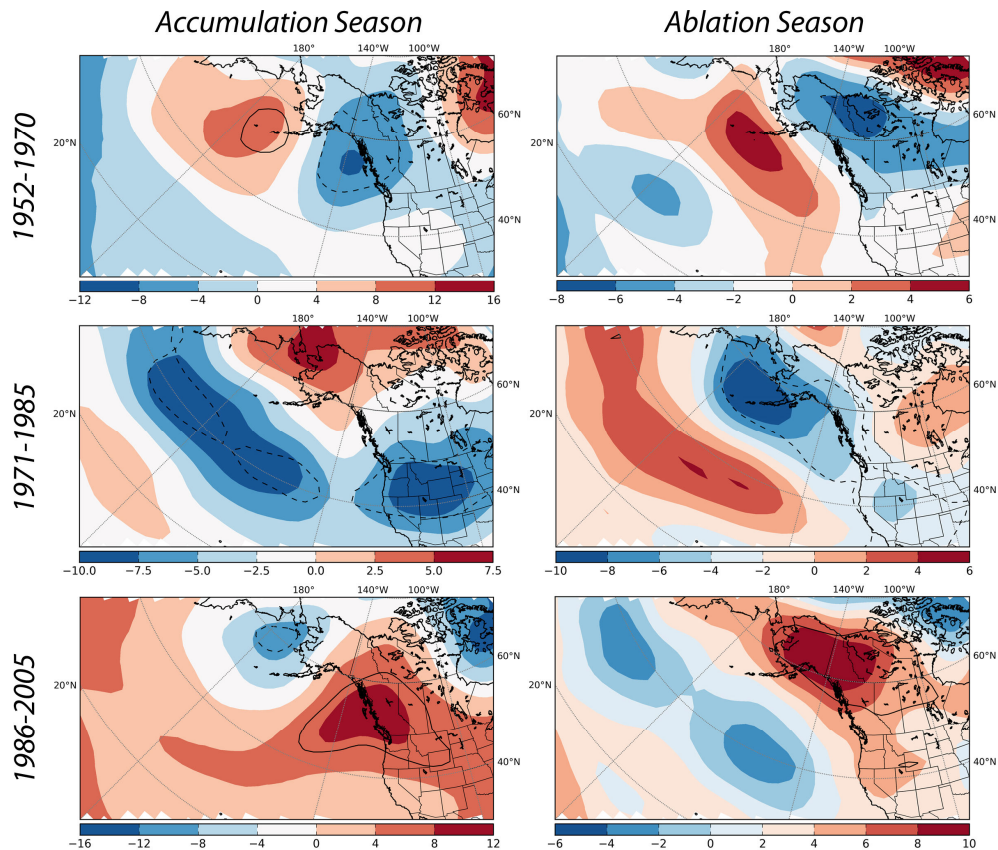
M. J. Beedle et al.



**Figure 11.** ClimateWNA precipitation records of deviation from the long-term (1952–2005) mean of **(A)** total accumulation season precipitation, **(B)** total ablation season precipitation, and **(C)** total annual precipitation. Gray bars and values indicate averages for the periods 1952–1970, 1970–1985, and 1985–2005.

## Glacier change in the Cariboo Mountains, British Columbia, Canada (1952–2005)

M. J. Beedle et al.



**Figure 12.** Geopotential height (700 hPa) anomalies (m) for the accumulation and ablation seasons. Color scale shows magnitude of anomaly. Data for the period 1952–2005 defines the mean fields. Dashed and solid contours respectively denote negative and positive anomalies that are significantly different ( $p < 0.05$ ) from the mean at a given grid point.

[Title Page](#)
[Abstract](#)
[Introduction](#)
[Conclusions](#)
[References](#)
[Tables](#)
[Figures](#)
[Back](#)
[Close](#)
[Full Screen / Esc](#)
[Printer-friendly Version](#)
[Interactive Discussion](#)