

The influence of edge effects on crack propagation in snow stability tests

E. H. Bair et al.

The influence of edge effects on crack propagation in snow stability tests

E. H. Bair^{1,2}, R. Simenhois³, A. van Herwijnen⁴, and K. Birkeland⁵

¹US Army Corps of Engineers Cold Regions Research and Engineering Laboratory, Hanover, NH, USA

²Earth Research Institute, University of California, Santa Barbara, CA, USA

³Southeast Alaska Avalanche Center, Juneau, AK, USA

⁴WSL Institute for Snow and Avalanche Research SLF, Davos, Switzerland

⁵US Forest Service National Avalanche Center, Bozeman, MT, USA

Received: 24 October 2013 – Accepted: 16 December 2013 – Published: 9 January 2014

Correspondence to: E. H. Bair (nbair@eri.ucsb.edu)

Published by Copernicus Publications on behalf of the European Geosciences Union.

Title Page	
Abstract	Introduction
Conclusions	References
Tables	Figures
⏪	⏩
◀	▶
Back	Close
Full Screen / Esc	
Printer-friendly Version	
Interactive Discussion	

Abstract

Propagation tests are used to assess the likelihood of crack propagation in a snowpack, yet little is known about how test length affects propagation. Guidelines suggest beams with lengths around 1 m for Extended Column Tests (ECTs) and Propagation Saw Tests (PSTs). To examine how test length affects propagation, we performed 163 ECTs and PSTs 1 to 10 m long. On days with full crack propagation in 1.0 to 1.5 m tests, we then made videos of tests 2 to 10 m long. We inserted markers for particle tracking to measure collapse amplitude, collapse wave speed, and wavelength. We also used a finite element model to simulate the strain energy release rate at fixed crack lengths. We find that: (1) the proportion of tests with full propagation decreased with test length; (2) collapse was greater at the ends of the beams than in the centers; (3) collapse amplitudes in the longer tests were consistent with the shorter tests and did not reach a constant value; (4) collapse wavelengths in the longer tests were around 3 m, 2 × greater than what is predicted by the anticrack model. Based on our field tests and FE models, we conclude that the shorter tests fully propagated more frequently because of increased stress concentration from the far edge. The FE model suggests this edge effect occurs for PSTs up to 2 m long or a crack to beam length ratio ≥ 0.20 . Our results suggest that ECT and PST length guidelines may need to be revisited.

1 Introduction

Snow stability tests are used to evaluate avalanche hazard. Based on SnowPilot pit data across the US over the last decade (Birkeland and Chabot, 2012), the three most popular tests are, in this order: (1) the Extended Column Test (ECT), (2) the Compression Test (CT), and (3) the Propagation Saw Test (PST). The CT is the oldest of the three and has been in use since the 1970s (Jamieson, 1999). Briefly, the CT involves isolating a column 30 cm × 30 cm that is deep enough to include the slab and the failure layer. The column is loaded by tapping a shovel placed on top of the snow with

The influence of edge effects on crack propagation in snow stability tests

E. H. Bair et al.

Title Page

Abstract

Introduction

Conclusions

References

Tables

Figures



Back

Close

Full Screen / Esc

Printer-friendly Version

Interactive Discussion



The influence of edge effects on crack propagation in snow stability tests

E. H. Bair et al.

Title Page

Abstract

Introduction

Conclusions

References

Tables

Figures

⏪

⏩

◀

▶

Back

Close

Full Screen / Esc

Printer-friendly Version

Interactive Discussion

increasing force. The number of taps to failure as well as the quality and character of the failure are recorded (e.g. van Herwijnen and Jamieson, 2007). The ECT is similar to the CT except that the isolated beam is longer, typically 30 cm wide × 90 cm long. In the ECT, the most important measurement is whether or not the crack propagates across the beam. The PST has similar dimensions to the ECT, but the beam is loaded by creating a progressively longer notch in the weak layer with the blunt end of a snow saw. The length of the critical notch, when the crack self-propagates, is recorded. For comprehensive guidelines for these tests, see Greene et al. (2010).

The CT has proven to be an effective test for crack initiation, but because of the small size of the column, it cannot be used to study crack propagation. Crack initiation refers to the stage of fracture where cracks are shorter than the critical length; that is cracks do not self-propagate. When cracks reach a critical length, they self-propagate. We refer to this stage of fracture as propagation. A critical crack self-propagates without any external changes in the system, i.e. the crack propagates without additional load. The distinction between stages is important for avalanche hazard evaluation because initiation may only result in a local failure, e.g. cracking at the trigger, while propagation can result in the failure of a slope, i.e. an avalanche. Crack propagation is an open area of avalanche research, with a debate on whether cracks propagate in shear (McClung, 1979) or in mixed-mode collapse/shear (anticrack, Heierli et al., 2008) waves. Recently, two tests were developed to examine crack propagation: The ECT (Simenhois and Birkeland, 2006) and the PST (Gauthier and Jamieson, 2008).

Stability tests will always suffer from edge effects because they use isolated beams that are orders of magnitude smaller than avalanche slabs. For instance, the longest crack propagation length recorded in previously published studies has been about 3 m (van Herwijnen et al., 2010; Gauthier and Jamieson, 2008). Also, cracks likely propagate radially from a trigger in an avalanche, while in PSTs and ECTs, cracks are forced to travel in a straight path. Attempts have been made to reduce edge effects by, for example, not cutting the far end of the beam in PSTs (McClung, 2009). An “uncut” back end showed significantly shorter crack propagation lengths (Ross and

The influence of edge effects on crack propagation in snow stability tests

E. H. Bair et al.

Title Page

Abstract

Introduction

Conclusions

References

Tables

Figures

⏪

⏩

◀

▶

Back

Close

Full Screen / Esc

Printer-friendly Version

Interactive Discussion

Jamieson, 2012), suggesting that beam isolation aids propagation. In contrast, the critical cut length r_c (the cut length needed to initiate self-propagation) did not change with increasing beam length (Gauthier and Jamieson, 2008) or uncut/cut back ends (Ross and Jamieson, 2012). Because the beam ends affect crack propagation, centered propagation tests (centered ECTs – CECTs and centered PSTs – CPSTs, Heierli et al., 2011; Heierli, 2008) have been proposed. Whether or not these centered tests reduce edge effects has not been tested. The theoretical prediction from the anticrack model is that the critical cut length doubles for a CPST compared to a PST (Heierli, 2008).

The standard beam length for ECTs and PSTs is about 1 m. Technically, the ECT guidelines suggest 0.9 m (Simenhois and Birkeland, 2009), while PST guidelines (Gauthier and Jamieson, 2008) suggest the greater of 1.0 m or the height of the slab. These length guidelines have not been rigorously evaluated in terms of how the stress field is affected by test length.

The anticrack model assumes a steady state for the collapse wave (i.e. constant collapse amplitude, wave speed, and wavelength), but experimental results have not shown a steady state. One reason suggested is that tests 3 m or less are not long enough to allow a steady state collapse wave to develop (van Herwijnen et al., 2010). Alternatively, a steady state collapse wave may never develop. Longer tests are needed to verify the steady state assumption.

For typical slabs and weak layers, the anticrack model predicts a wavelength of 0.3 to 3 m, depending on the: elastic modulus of the slab, the collapse wave speed, the collapse amplitude, and a few other parameters. The only published experiment shows a wavelength estimate of 1.6 m (Heierli, 2008). The paucity of wavelength estimates can be explained by the fact that collapse wavelengths may be equal in length to the longest tests published, making it difficult to accurately estimate the wavelength.

2 Background and methods

2.1 Edge effects in propagation tests

In field and laboratory fracture tests, edge effects are always present. These edge effects can cause the strain energy release rate G to depend on sample size. Because free edges cannot transmit stress, they act as stress concentrators (e.g. Fig. 1). The PST and ECT suffer from two main edge effects. One edge effect is due to the sides (parallel faces, with the outer face labeled “slab” in Fig. 2). The crack nucleus in both tests can be considered a through crack, meaning that the crack extends from one side to the other. This obviously does not model a crack nucleus in an avalanche, which is an embedded crack; that is a crack nucleus far from any edges. A through crack configuration significantly increases stress at the crack-tip compared to an embedded crack (Newman and Raju, 1981). It may be possible to use a beam that is significantly wider than a shovel in an ECT to reduce this edge effect, but we are not aware of any studies which have done this.

A second edge effect is caused by the front and back of the beam (“far edge” and “trigger edge” in Fig. 2). While centered tests should reduce this edge effect, CECTs and CPSTs are not widely used because they require about twice as much snow to be excavated for the same crack propagation length as standard tests. Further, we suggest that the trigger edge causes less bias in test results than the far edge. Whether or not a crack reaches the far edge is vital to determining propagation likelihood. Conversely, failure at the trigger end is common and offers little insight into propagation likelihood. Thus we include some CPSTs results, but focus on the far edge effect in standard tests.

2.2 Field tests

We performed 163 tests over two winters in CA, UT, and MT USA. We began with standard 1 to 1.5 m tests. If those tests had full crack propagation, we performed progressively longer tests, sometimes up to 10 m. For the CPSTs, all tests had a beam

The influence of edge effects on crack propagation in snow stability tests

E. H. Bair et al.

[Title Page](#)[Abstract](#)[Introduction](#)[Conclusions](#)[References](#)[Tables](#)[Figures](#)[⏪](#)[⏩](#)[◀](#)[▶](#)[Back](#)[Close](#)[Full Screen / Esc](#)[Printer-friendly Version](#)[Interactive Discussion](#)

length l of 1.7 m. We also took standard snow profile measurements at each site including: layers, densities, grain classification, etc. (Fierz et al., 2009).

We categorized tests results by three types of crack propagation. (1) Full propagation – the crack propagated to the far edge of the beam (Fig. 2). For the PST, we also stipulated that $r_c \leq 50$ cm to compare results with ECTs. PSTs with $r_c > 50$ cm load a considerably larger area of the beam than ECTs, which mostly load the beam area under the shovel (van Herwijnen and Birkeland, 2014). For comparison, the shovels used for ECTs were square shaped and 25–30 cm in width w . (2) Partial propagation – the crack traveled $> r_c$ from the far edge of the saw (edge closest to far edge of the beam) in a PST and $> w$ from the far edge of the shovel in an ECT, but arrested before reaching the far edge of the beam. (3) No propagation – the crack traveled $< r_c$ from the far edge of the saw in a PST and $< w$ from the far edge of the shovel in an ECT.

2.3 Particle tracking

We filmed tests with a Casio EX-ZR100. The shorter (1–2 m) tests were filmed at lower resolution and higher speed, 432×320 pixels and 240 frames per second (fps). Most of the longer tests were filmed at higher resolution and lower speed, 1920×1080 pixels and 30 fps. We found this two resolution approach gave us the most accurate displacement measurements for tests spanning an order of magnitude in length.

Black markers, 25 mm in diameter, were placed into the side of the beam. These markers were the particles we tracked to measure displacement, wave speed, and collapse amplitude. For specifics on the particle tracking methodology, see previous work on particle tracking with stability tests (Bair et al., 2012; van Herwijnen and Jamieson, 2005; van Herwijnen et al., 2010; van Herwijnen and Heierli, 2009; van Herwijnen and Birkeland, 2014). Similar to another study (van Herwijnen and Birkeland, 2014), we found it was often not possible to track particles near the shovel during ECTs because of snow compaction under the shovel.

Wavelength was estimated visually by plotting the collapse wave at different times during failure, with an accuracy equal to the marker spacing, typically 0.5 m. There

The influence of edge effects on crack propagation in snow stability tests

E. H. Bair et al.

Title Page

Abstract

Introduction

Conclusions

References

Tables

Figures

⏪

⏩

◀

▶

Back

Close

Full Screen / Esc

Printer-friendly Version

Interactive Discussion



are three phases of vertical displacement during failure: (i) bending, (ii) rapid collapse, and (iii) bed surface erosion. To measure the wavelength, we attempted to isolate (ii); including (i) and (iii) would lead to wave lengths that are too long.

Processing was done in MATLAB using open source particle tracking functions (Crocker and Grier, 1996). Images were contrast enhanced and displacements were smoothed using a smoothing function (MATLAB function “robust loess”) with a window length of 9. Error was computed using the standard deviation of each marker position over 30 frames prior to the start of the test. The mean error is reported and was less than 1 mm for all tests. We found this error low enough for the purposes of this study, but it is larger than in previous studies (van Herwijnen et al., 2010; Bair et al., 2012) since error increases with beam length.

2.4 Finite element (FE) modeling

We modeled profiles from the field tests using finite element analysis in Ansys 14. Specifically, the FE method allowed us to explore how changing the test length l affected the strain energy of the slab U . Because it is simpler to model bending during a PST than the more dynamic ECT, we choose to model PSTs. We used an FE model developed specifically for PSTs (Sigrist, 2006). The critical energy release rate G_c was estimated in a two-step process where the sum of strain energy U (ANSYS command SENE) was estimated for $U(r_c - \partial r)$ and $U(r_c)$:

$$G_c \approx -\frac{1}{b} \frac{U(r_c) - U(r_c - \partial r)}{\partial r}, \quad (1)$$

where $\partial r = 0.002$ m.

We modeled three different snow profiles. For one day, tests up to $l = 7$ m had full propagation (Fig. 3a). For the other two days, tests with $l = 1.4$ – 1.5 m had full propagation, but tests with $l \geq 2$ m had no propagation (Fig. 3b and c). The profiles had 3–6 layers: a fixed substrate, weak layer, and 1–4 layers in the slab. Each layer was modeled as an isotropic linear elastic material with Poisson’s ratio $\nu = 0.17$ and an elastic

The influence of edge effects on crack propagation in snow stability tests

E. H. Bair et al.

Title Page

Abstract

Introduction

Conclusions

References

Tables

Figures

⏪

⏩

◀

▶

Back

Close

Full Screen / Esc

Printer-friendly Version

Interactive Discussion



modulus E estimated from the measured density ρ (Scapozza, 2004):

$$E = 0.2 \text{ MPa} \exp \left[\frac{\rho}{67 \text{ kg m}^{-3}} \right]. \quad (2)$$

The SOLID187 element type was used. This is a 10 node element with quadratic displacement behavior and three degrees of freedom. The mesh element line size was 5 cm, with a finer resolution mesh applied at the crack-tip and weak layer (ANSYS command SMRTSIZE). The edge notch in the PST was modeled as a 0.002 m thick gap in the center of the weak layer. We choose the center of the weak layer for the notch because this was how we notched our field tests. The weak layers were 0.01–0.07 m thick. These weak layers are thicker than those in other FE models of PSTs, where the weak layers and the edge notches were the same thickness, either 0.002 m (Sigrist, 2006) or 0.003 m (Schweizer et al., 2011). In all of the FE tests, tangency or crack-face contact did not occur, as maximum slope normal displacement was around 0.001 m. As with the field tests, the FE beams were all 0.30 m wide.

2.4.1 FE correction factor

To compensate for the far edge effect in our FE tests, we introduce a geometrical correction factor $F(r/l)$ to relate G to its asymptotic value G_∞ :

$$G_\infty = F(r/l)G. \quad (3)$$

where l is the sample length, r is the crack length, and r/l is the relative crack length. We calculate the correction factor as,

$$F(r/l) = \frac{\min[G(r,l)]}{G(r,l)} \quad (4)$$

where $\min[G(r,l)]$ is the minimum value of G for $l = 0.75$ – 6.00 m. We chose $r = r_c$, where r_c is the critical cut length from a field PST with $l = 1.40$ – 1.50 m. We expect

The influence of edge effects on crack propagation in snow stability tests

E. H. Bair et al.

Title Page

Abstract

Introduction

Conclusions

References

Tables

Figures

⏪

⏩

◀

▶

Back

Close

Full Screen / Esc

Printer-friendly Version

Interactive Discussion



from the continuous bed surface erosion process (van Herwijnen and Jamieson, 2005). We also selected particle tracking results from 3 m tests that were done side-by-side to the longer tests for comparison. We would have liked to include particle tracking results from the 1–2 m tests done side-by-side to the longer tests, but on days with full propagation in the longer tests, the 1–1.5 m tests were not recorded on video because of time constraints in the field.

3.2.1 Collapse amplitude

The selected tests had similar collapse amplitudes a (3–9 mm) to those in other studies of failures on persistent weak layers (van Herwijnen and Jamieson, 2005; van Herwijnen et al., 2010; van Herwijnen and Birkeland, 2014). Plotting horizontal position against collapse amplitude shows that a steady state was not reached, even after almost 7 m (Fig. 6a and b). This result supports a previous study that also found no steady state in shorter tests (van Herwijnen et al., 2010).

In the selected tests, greater collapse occurred near one or both of the beam edges than in the center of the beam (Fig. 6b). Relative to the center of the beam, markers near the trigger edge collapsed 160 % and markers near the far end collapsed 128 %, on average. Markers near the trigger end of the beam collapsed more than the center in every test. Markers near the far end of the beam collapsed more than the center in 7 of 9 tests.

3.2.2 Wavelength

The wavelengths (2.5–3.3 m, e.g. Fig. 7) are much longer than what is predicted by the anticrack model. The model predicts wavelengths of 1.4–1.6 m for the slabs and weak layers in this study (Eq. 5.17, Heierli, 2008). Our wavelengths are about 2× larger than the only experimentally measured wavelength of 1.6 m (Heierli, 2008).

The influence of edge effects on crack propagation in snow stability tests

E. H. Bair et al.

Title Page

Abstract

Introduction

Conclusions

References

Tables

Figures

⏪

⏩

◀

▶

Back

Close

Full Screen / Esc

Printer-friendly Version

Interactive Discussion



3.2.3 Wave speed

Collapse wave speeds ranged from 14–35 m s^{-1} and are consistent with previous studies (van Herwijnen and Jamieson, 2005; van Herwijnen et al., 2010; van Herwijnen and Birkeland, 2014). We found no dependence between wave speed and slab density, height, or collapse amplitude.

3.2.4 Collapse amplitude with time

Because tests 1–8 were all done in the same place and on the same failure layer, we were able to track the collapse amplitude over 11–12 days, until the tests had no propagation (Fig. 8). The average decrease in collapse amplitude was $-0.65 \text{ mm day}^{-1}$, with the 3 m beams showing the largest decrease. Similarly, the ECT scores for these tests generally increased with time (Table 2).

3.3 FE simulations

The FE simulations show that G decreases with l (Fig. 9). The function G becomes asymptotic at $l \approx 2 \text{ m}$, suggesting the far edge effect becomes negligible after 2 m. Using Eq. (4), we computed $F(r/l)$ and plotted the results (Fig. 10). The curves from each profile are almost identical, suggesting that $F(r/l)$ can be applied to persistent (Fig. 3a and c) and nonpersistent (Fig. 3b) weak layers. For all the profiles, the asymptote is at $r/l \approx 0.20$. This asymptote suggests that the far edge effect becomes significant for $r/l > 0.20$. In terms of a 1 m PST, cut lengths $> 20 \text{ cm}$ will be subjected to increased stress from the far edge.

4 Discussion

The finding that full propagation decreased with test length is central to this study. We find that cracks in shorter tests are more prone to influence from the far edge than

TCD

8, 229–257, 2014

The influence of edge effects on crack propagation in snow stability tests

E. H. Bair et al.

Title Page

Abstract

Introduction

Conclusions

References

Tables

Figures

⏪

⏩

◀

▶

Back

Close

Full Screen / Esc

Printer-friendly Version

Interactive Discussion



The influence of edge effects on crack propagation in snow stability tests

E. H. Bair et al.

[Title Page](#)

[Abstract](#)

[Introduction](#)

[Conclusions](#)

[References](#)

[Tables](#)

[Figures](#)

[⏪](#)

[⏩](#)

[◀](#)

[▶](#)

[Back](#)

[Close](#)

[Full Screen / Esc](#)

[Printer-friendly Version](#)

[Interactive Discussion](#)



longer tests, and this edge effect causes them to fully propagate more often. Our FE simulations show that, in shorter tests, G is higher than its asymptotic value G_∞ . The crack propagation criterion $G \geq G_c$, where G_c is the critical energy release rate, may be met for crack lengths in shorter tests that are sub-critical in longer tests. This suggests that shorter tests could fully propagate when slope scale failure is unlikely.

Estimated collapse wavelengths were $2\times$ or longer than what is predicted by the anticrack model. There are two explanations: (1) either the model has some incorrect assumptions, and/or (2) the elastic modulus values used in the model are too low. For the anticrack model to give wavelengths of 3 m for these slabs, the elastic modulus would have to be around 100 MPa, one or two orders of magnitude greater than values recorded in experimental results for slabs with the densities in this study (Schweizer et al., 2011; Scapozza, 2004; Sigrist and Schweizer, 2007). It is more likely that the model has some incorrect assumptions. In particular, we suggest the free fall assumption of the anticrack model is incorrect. Residual support between the slab and weak layer could mean the slab is never in free fall. This support could explain the longer wavelengths. A good method to test if a slab is in free fall is to study the instantaneous acceleration values. Unfortunately, our video cameras did not sample fast enough to measure instantaneous acceleration with any certainty.

We experimented with CPSTs, and found that, as predicted by the anticrack theory, r_c doubled. Our results suggest that a beam with length $2\times$ that of a PST would be needed to minimize edge effects in a CPST. CPSTs are also harder to perform, as the operator must keep track of where the saw was inserted into the beam. From a practical perspective, we suggest that a PST provides as much information to the user as a CPST and only requires a beam half as long to be excavated.

The observed decrease in collapse amplitude is not directly related to edge effects, but an interesting results nonetheless. To our knowledge, this is the first study to track the evolution of collapse amplitude over time. The 0.65 mm day^{-1} average decrease in collapse amplitude is evidence of a strengthening weak layer. The concurrent increase

in ECT scores supports the idea that the weak layer was gaining strength during this time period.

The FE simulations allowed us to change only l , while keeping other parameters fixed for a given profile. The asymptote at $r/l \approx 0.20$ suggests relative cracks lengths longer than 20 % are subject to influences from the far edge of the beam. This finding contrasts with PST guidelines, which recommend a test length of 1 m and suggest $r_c/l \leq 0.50$ accompanied by “End” propagation indicates likely crack propagation (Gauthier and Jamieson, 2008).

The FE results suggest that the far edge effect becomes negligible for PSTs ≥ 2 m. Thus, the FE results explain the decrease in full propagation between the 1–2 m and 3–5 m PSTs. The FE results cannot explain the continued decrease in full propagation for the ≥ 5 m PSTs. One possibility is that increasing spatial variability in the slab and weak layer caused the continued decrease in full propagation. The coefficient of variation (CV) for the collapse amplitudes in tests 1–8, one measure of spatial variability, showed no relationship with test length l for side-by-side tests. If spatial variability increased with test length, one might expect this CV to increase with l . Still, we cannot rule out the effect of spatial variability on crack propagation. To fully assess the effect of spatial variability on crack propagation would require measurements on properties such as penetration resistance across the test beams and weak layers.

The ECT was not modeled with the FE method. Given that ECTs showed concurrent decreases in full propagation with test length along with PSTs, it is likely that G in an ECT also decreases with l , holding all else constant. In fact, given the dynamic nature of the ECT, reflected stress waves, another edge effect, may be significant in an ECT as well. Reflected stress waves can combine constructively and destructively with stress fields at the crack-tip resulting in complex interactions, but they could significantly increase G .

Based on our results, we suggest that ECT and PST length guidelines be revisited. Our result imply that 2 m ECTs and PSTs could reduce false unstable rates compared to standard length tests. Alternatively, 2 m tests could increase the false stable rate,

The influence of edge effects on crack propagation in snow stability tests

E. H. Bair et al.

Title Page

Abstract Introduction

Conclusions References

Tables Figures

⏪ ⏩

◀ ▶

Back Close

Full Screen / Esc

Printer-friendly Version

Interactive Discussion



which is arguably the most important metric for a stability test. We propose testing standard length and 2 m ECTs and PSTs side-by-side on stable and unstable slopes to compare accuracy.

5 Conclusion

We performed 158 propagation tests spanning an order of magnitude in length. The proportion of tests that propagated fully decreased as tests increased in length. We find that the shorter tests suffered from a greater far edge effect that caused them to fully propagate more often than the longer tests. Evidence of this far edge effect was that collapse amplitudes were greater at beam ends than in the centers. Our finding that full propagation decreased with test length was corroborated with FE simulations. The simulations showed that the strain energy release rate G decreased with test length l for a given crack length r , before reaching an asymptotic value. The asymptote was at $r/l \approx 0.20$ or at $l \approx 2$ m for typical critical crack lengths. For tests ≥ 2 m, we speculate that spatial variability could explain the continued decrease in full propagation.

A time-series of unstable ECTs over 11–12 days in the same place allowed us to track collapse amplitude over time. On average, collapse amplitude decreased 0.65 mm day^{-1} as the weak layer gained strength. This decrease coincided with an increase in ECT scores. To our knowledge, this study is the first to report trends in collapse amplitude over time.

We suggest that ECT and PST length guidelines be revisited. Our results show that 2 m tests could decrease false unstable results compared to standard length tests. We propose side-by-side tests on stable and unstable slopes to determine if 2 m tests are more (or less) accurate than standard length tests.

Acknowledgements. We thank Joachim Heierli for help with application of the anticrack model. We gratefully acknowledge Michela Adrian, Joe Magajna, and Sue Burak of the Eastern Sierra Avalanche Center for their help with field work. We thank Toby Weed and Drew Hardesty from the Utah Avalanche Center and Doug Chabot and Mark Staples from The Gallatin National

The influence of edge effects on crack propagation in snow stability tests

E. H. Bair et al.

Title Page

Abstract

Introduction

Conclusions

References

Tables

Figures

⏪

⏩

◀

▶

Back

Close

Full Screen / Esc

Printer-friendly Version

Interactive Discussion



Forest Avalanche Center for directing us to places with propagation. The first author is supported by a US Army Corps of Engineers Cold Regions Research and Engineering fellowship administered by ORISE/ORAU.

References

- 5 Anderson, T. L.: *Fracture Mechanics: Fundamentals and Applications*, Taylor and Francis, Boca Raton, FL, 610 pp., 2005.
- Bair, E. H., Simenhois, R., Birkeland, K., and Dozier, J.: A field study on failure of storm snow slab avalanches, *Cold Reg. Sci. Technol.*, 79–80, 20–28, doi:10.1016/j.coldregions.2012.02.007, 2012.
- 10 Birkeland, K. W. and Chabot, D.: Changes in stability test usage by Snowpilot users, in: *Proceedings of the 2012 International Snow Science Workshop*, 16–22 September 2012, 1065–1068, Anchorage, AK, USA, 2012.
- Crocker, J. C. and Grier, D. G.: Methods of digital video microscopy for colloidal studies, *J. Colloid Interf. Sci.*, 179, 298–310, doi:10.1006/jcis.1996.0217, 1996.
- 15 Fierz, C., Armstrong, R. L., Durand, Y., Etchevers, P., Greene, E., McClung, D. M., Nishimura, K., Satyawali, P. K., and Sokratov, S.: *The International Classification for Seasonal Snow on the Ground*, IHP-VII Technical Documents in Hydrology, UNESCO, Paris, France, 83, 90, 2009.
- Gauthier, D. and Jamieson, B.: Evaluation of a prototype field test for fracture and failure propagation propensity in weak snowpack layers, *Cold Reg. Sci. Technol.*, 51, 87–97, doi:10.1016/j.coldregions.2007.04.005, 2008.
- 20 Greene, E., Atkins, D., Birkeland, K. W., Elder, K., Landry, C., Lazar, B., McCammon, I., Moore, M., Sharaf, D., Sterbenz, C., Tremper, B., and Williams, K.: *Snow, Weather, and Avalanches: Observational Guidelines for Avalanche Programs in the United States*, 136, American Avalanche Association, Pagosa Springs, CO, 2010.
- 25 Heierli, J.: Anticrack model for slab avalanche release, *Institut für Zuverlässigkeit von Bauteilen und Systemen*, Universität Karlsruhe, Germany, 113, 2008.
- Heierli, J., Gumbsch, P., and Zaiser, M.: Anticrack nucleation as triggering mechanism for snow slab avalanches, *Science*, 321, 240–243, doi:10.1126/science.1153948, 2008.

The influence of edge effects on crack propagation in snow stability tests

E. H. Bair et al.

Title Page

Abstract

Introduction

Conclusions

References

Tables

Figures

⏪

⏩

◀

▶

Back

Close

Full Screen / Esc

Printer-friendly Version

Interactive Discussion



The influence of edge effects on crack propagation in snow stability tests

E. H. Bair et al.

Title Page

Abstract

Introduction

Conclusions

References

Tables

Figures

⏪

⏩

◀

▶

Back

Close

Full Screen / Esc

Printer-friendly Version

Interactive Discussion



Heierli, J., Birkeland, K. W., Simenhois, R., and Gumbsch, P.: Anticrack model for skier triggering of slab avalanches, *Cold Reg. Sci. Technol.*, 65, 372–381, doi:10.1016/j.coldregions.2010.10.008, 2011.

Jamieson, J. B.: The compression test – after 25 years, *The Avalanche Rev.*, 18, 10–12, 1999.

5 McClung, D. M.: Shear fracture precipitated by strain softening as a mechanism of dry slab avalanche release, *J. Geophys. Res.*, 84, 3519–3526, doi:10.1029/JB084iB07p03519, 1979.

McClung, D. M.: Dry snow slab quasi-brittle fracture initiation and verification from field tests, *J. Geophys. Res.*, 114, F01022, doi:10.1029/2007JF000913, 2009.

10 Newman, J. C. and Raju, I. S.: An empirical stress-intensity factor equation for the surface crack, *Eng. Fract. Mech.*, 15, 185–192, doi:10.1016/0013-7944(81)90116-8, 1981.

Ross, C. K. H. and Jamieson, B.: The propagation saw test: slope scale validation and alternative test methods, *J. Glaciol.*, 58, 407–416, doi:10.3189/2012JoG11J192, 2012.

15 Scapozza, C.: Entwicklung eines dichte- und temperaturabhängigen Stoffgesetzes zur Beschreibung des visko-elastischen Verhaltens von Schnee, Diss., Technische Wissenschaften, Eidgenössische Technische Hochschule ETH Zürich, 15357, 2004 doi:10.3929/ethz-a-004680249, 2004.

Schweizer, J., van Herwijnen, A., and Reuter, B.: Measurements of weak layer fracture energy, *Cold Reg. Sci. Technol.*, 69, 139–144, doi:10.1016/j.coldregions.2011.06.004, 2011.

20 Sigrist, C.: Measurement of fracture mechanical properties of snow and application to dry snow slab avalanche release, Diss., Eidgenössische Technische Hochschule ETH Zürich, 16736, doi:10.3929/ethz-a-005282374, 2006.

Sigrist, C. and Schweizer, J.: Critical energy release rates of weak snowpack layers determined in field experiments, *Geophys. Res. Lett.*, 34, L03502, doi:10.1029/2006gl028576, 2007.

25 Simenhois, R. and Birkeland, K.: The extended column test: a field test for fracture initiation and propagation, 2006 International Snow Science Workshop, Telluride, CO USA, 1–6 October 2006, 79–85, 2006.

Simenhois, R. and Birkeland, K.: The extended column test: test effectiveness, spatial variability, and comparison with the propagation saw test, *Cold Reg. Sci. Technol.*, 59, 210–216, doi:10.1016/j.coldregions.2009.04.001, 2009.

30 van Herwijnen, A. and Birkeland, K. W.: Using high-speed video to better understand extended column tests, *Cold Reg. Sci. Technol.*, 97, 97–103, doi:10.1016/j.coldregions.2013.07.002, 2014.

- van Herwijnen, A. and Heierli, J.: Measurement of crack-face friction in collapsed weak snow layers, *Geophys. Res. Lett.*, 36, L23502, doi:10.1029/2009gl040389, 2009.
- van Herwijnen, A. and Jamieson, B.: High-speed photography of fractures in weak snowpack layers, *Cold Reg. Sci. Technol.*, 43, 71–82, doi:10.1016/j.coldregions.2005.05.005, 2005.
- 5 van Herwijnen, A. and Jamieson, B.: Fracture character in compression tests, *Cold Reg. Sci. Technol.*, 47, 60–68, doi:10.1016/j.coldregions.2006.08.016, 2007.
- van Herwijnen, A., Schweizer, J., and Heierli, J.: Measurement of the deformation field associated with fracture propagation in weak snowpack layers, *J. Geophys. Res.*, 115, F03042, doi:10.1029/2009jf001515, 2010.

The influence of edge effects on crack propagation in snow stability tests

E. H. Bair et al.

Title Page

Abstract

Introduction

Conclusions

References

Tables

Figures

⏪

⏩

◀

▶

Back

Close

Full Screen / Esc

Printer-friendly Version

Interactive Discussion



Table 1. Summary of propagation tests. Tests listed by location, date, and propagation code: 0 is no propagation, 1 is partial propagation, 2 is full propagation. Selected tests (Table 2) are marked with an asterisk.

Date	Location	ECT, 1–2 m	ECT, 2–5 m	ECT, ≥ 5 m	PST, 1–2 m	PST, 2–5 m	PST, ≥ 5 m	CPST
29 Nov 2011	CA	0, 0			0, 0			
1 Mar 2012	CA	0						
17 Mar 2012	CA	0			0			
13 Apr 2012	CA	0			1	0		1, 0
20 Nov 2012	CA	0			2	0		0, 0
23 Nov 2012	CA				0, 0			0
27 Nov 2012	CA				0, 2, 2	1, 1		
14 Dec 2012	CA	0						
18 Dec 2012	CA	0, 0			0, 0, 0, 2			0, 2
19 Dec 2012	CA				2, 2, 2, 2, 2			2, 2, 2, 2, 2
20 Dec 2012	CA				1, 1, 2	1, 2		
21 Dec 2012	CA	0			2			2
26 Dec 2012	CA	2	1					
2 Jan 2013	CA	2, 0	2*	2*				
3 Jan 2013	CA	2		2*	2, 2			
4 Jan 2013	CA	0, 0		0				
8 Jan 2013	CA	2	0			2	0	
9 Jan 2013	CA	2	2*	2*, 2*				
9 Jan 2013	MT	0, 0, 2						
11 Jan 2013	CA		2*	1, 2*				
14 Jan 2013	CA			0, 0, 0				
16 Jan 2013	MT	2	0, 2, 2	0, 0, 0, 0, 1, 1				
18 Jan 2013	CA	0					0	
22 Jan 2013	CA	2	0, 0			0		
23 Jan 2013	CA	2, 0, 0, 2		0	2, 0, 2		0	
28 Jan 2013	CA	2						
29 Jan 2013	CA	0, 0			0, 0			
31 Jan 2013	CA	0						
18 Feb 2013	UT	2	1, 0			2, 0	0, 0	
19 Feb 2013	MT	2		0			0	
20 Feb 2013	MT	2, 2		0	2		1, 2*	
21 Feb 2013	MT	0, 0, 2					0	
22 Feb 2013	MT	2	2	1				
11 Mar 2013	CA	0, 0, 2	0		0, 0, 2		0	
12 Mar 2013	CA	1, 2	0	0	2, 2		1	
13 Mar 2013	CA	2		2				
14 Mar 2013	CA						2, 1	
28 Mar 2013	CA	0, 0, 0, 2, 2, 2	0, 0					

The influence of edge effects on crack propagation in snow stability tests

E. H. Bair et al.

Title Page

Abstract Introduction

Conclusions References

Tables Figures

◀ ▶

◀ ▶

Back Close

Full Screen / Esc

Printer-friendly Version

Interactive Discussion



The influence of edge effects on crack propagation in snow stability tests

E. H. Bair et al.

Table 2. Selected unstable tests. For an explanation of why these tests were selected see Sect. 3.2. Location a – Rock Creek Canyon, CA, b – Yellow Mountain, MT; fps – frames per second; θ – slope angle; test beam length l ; test and score – see Greene et al. (2010, chap. 2); ε – displacement error; λ – wavelength; c – mean wave speed; a – mean collapse amplitude; ρ – mean slab density; h – mean slab height; FL – failure layer crystal type and size (Fierz et al., 2009).

Number	Date	Location	fps	θ , °	l , m	Test and score	ε , mm	λ , m (± 0.5 m)	c , ms^{-1}	a , mm	ρ , kgm^{-3}	h , cm	FL	FL size, mm
1	2 Jan 2013	a	240	2	3	ECTP 22	0.3	NA	28	9.2	216	58	\wedge	2–4
2	2 Jan 2013	a	240	2	5	ECTP 23	0.4	3.0	35	5.4	216	58	\wedge	2–4
3	3 Jan 2013	a	240	1	7	ECTP 26	0.9	3.0	24	5.6	216	55	\wedge	2–4
4	9 Jan 2013	a	240	0	3	ECTP 24	0.2	NA	20	7.1	249	45	\wedge	2–3
5	9 Jan 2013	a	240	0	5	ECTP 24	0.2	2.5	19	3.8	249	45	\wedge	2–3
6	9 Jan 2013	a	240	0	7	ECTP 24	0.5	3.0	15	3.9	249	45	\wedge	2–4
7	11 Jan 2013	a	30	0	3	ECTP 25	< 0.1	NA	14	2.9	249	52	\wedge	2–4
8	11 Jan 2013	a	30	0	7	ECTP 25	< 0.1	3.0	21	3.3	249	52	\wedge	2–4
9	20 Feb 2013	b	30	28	6	PST End 25/600	0.2	3.0	16	5.6	197	50	\square	2

Title Page

Abstract

Introduction

Conclusions

References

Tables

Figures

⏪

⏩

◀

▶

Back

Close

Full Screen / Esc

Printer-friendly Version

Interactive Discussion

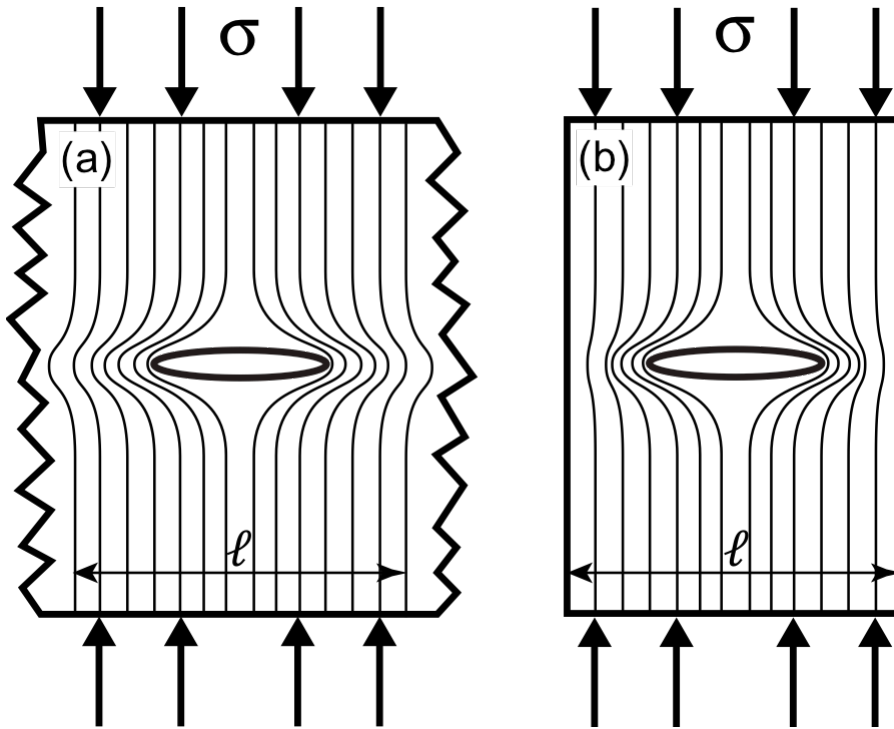


Fig. 1. Stress concentration from edges. A finite plate of length ℓ subject to a remote compressive stress **(a)** compared to a finite plate **(b)** subjected to the same stress. The tighter spacing between the lines of force represents higher local stress. The oval in the center is the crack. Adapted from Anderson (2005).

The influence of edge effects on crack propagation in snow stability tests

E. H. Bair et al.

Title Page	
Abstract	Introduction
Conclusions	References
Tables	Figures
◀	▶
◀	▶
Back	Close
Full Screen / Esc	
Printer-friendly Version	
Interactive Discussion	



The influence of edge effects on crack propagation in snow stability tests

E. H. Bair et al.

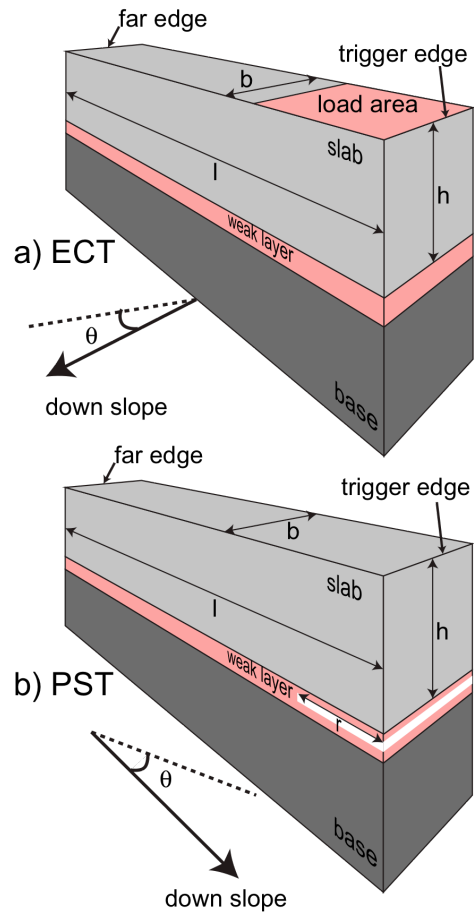


Fig. 2. ECT and PST geometry. Shown are the width b , slab height h , slab length l , slope angle θ , crack length r , and the far/trigger edges of the slab.

Title Page	
Abstract	Introduction
Conclusions	References
Tables	Figures
◀	▶
◀	▶
Back	Close
Full Screen / Esc	
Printer-friendly Version	
Interactive Discussion	



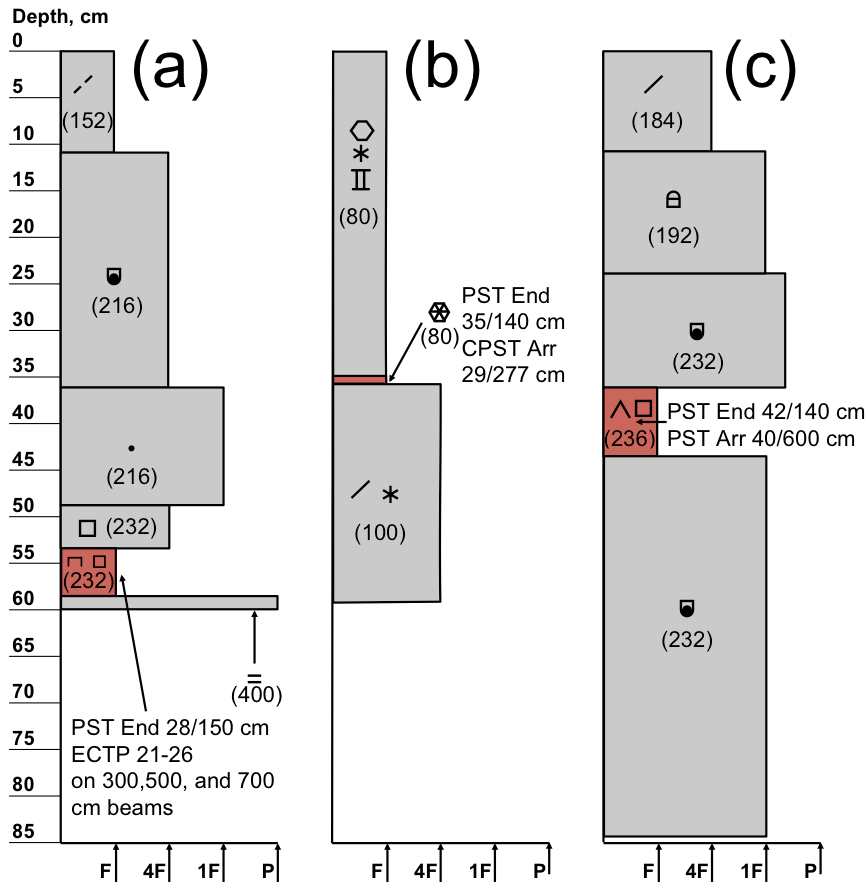


Fig. 3. Profiles for FE simulation. Profiles for each of the finite element simulations. Depth is from the snow surface, hand hardness is on the horizontal axis, and layer densities (kg m^{-3}) are in parenthesis. The weak layer is red. The symbols for snow crystals types are from the International Classification for Seasonal Snow on the Ground (Fierz et al., 2009).

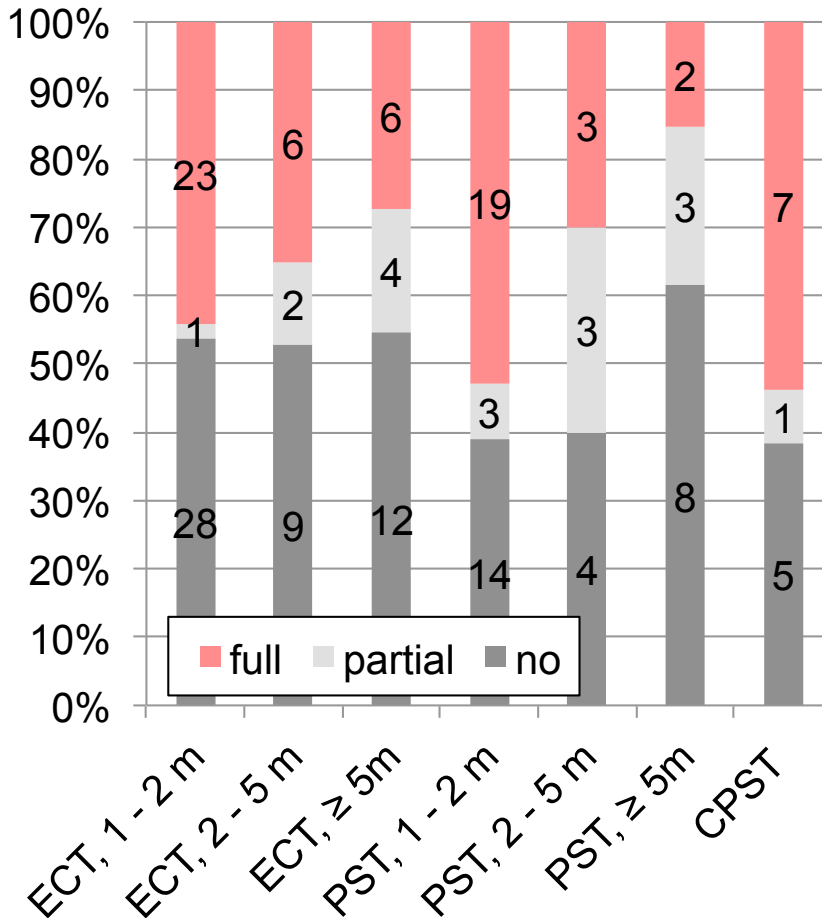


Fig. 4. Propagation summary chart. Stacked columns are percentages of tests that had no, partial, or full crack propagation. Each stacked column refers to a type of test (see Sect. 1) and beam length. Numbers inside stacked columns are counts of each propagation type.

Title Page	
Abstract	Introduction
Conclusions	References
Tables	Figures
⏪	⏩
◀	▶
Back	Close
Full Screen / Esc	
Printer-friendly Version	
Interactive Discussion	

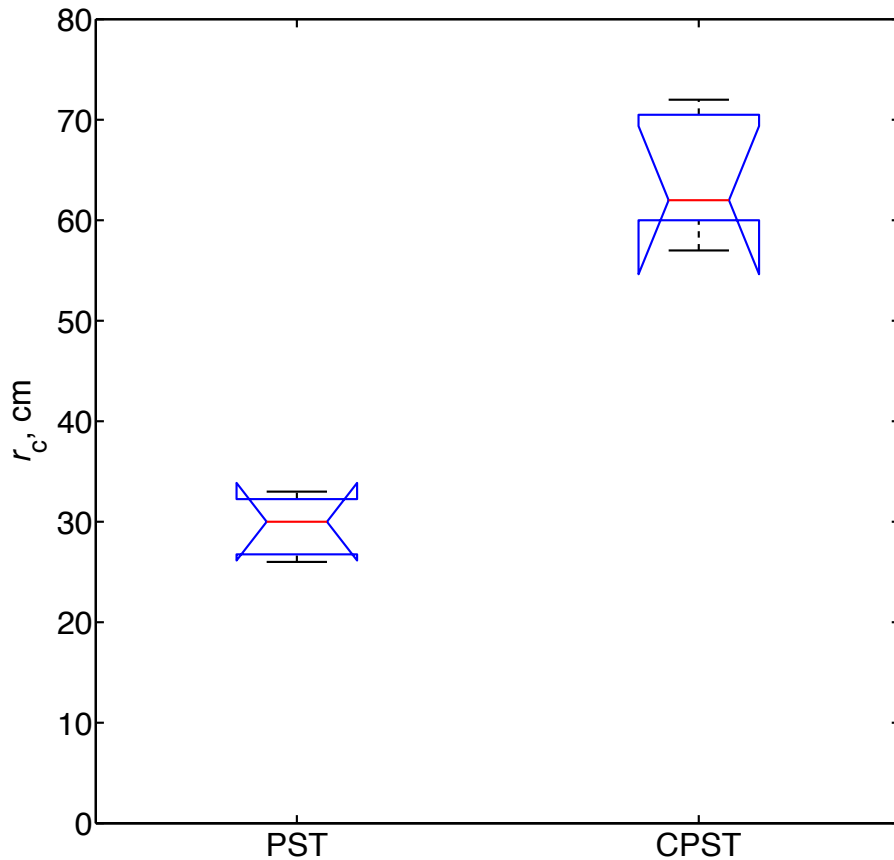


Fig. 5. Critical cut lengths (r_c) for edge (PST) and centered PSTs (CPST). All tests fully propagated and were done side-by-side (19 December 2012, Table 1). Median values are red lines, boxes are 25th/75th percentiles, and whiskers are ranges. Non-overlapping notches show significantly different groups at the 5% level from the Kruskal–Wallis test ($p = 0.009$). $N = 5$ PSTs and 5 CPSTs.

The influence of edge effects on crack propagation in snow stability tests

E. H. Bair et al.

Title Page

Abstract Introduction

Conclusions References

Tables Figures

◀ ▶

◀ ▶

Back Close

Full Screen / Esc

Printer-friendly Version

Interactive Discussion



The influence of edge effects on crack propagation in snow stability tests

E. H. Bair et al.

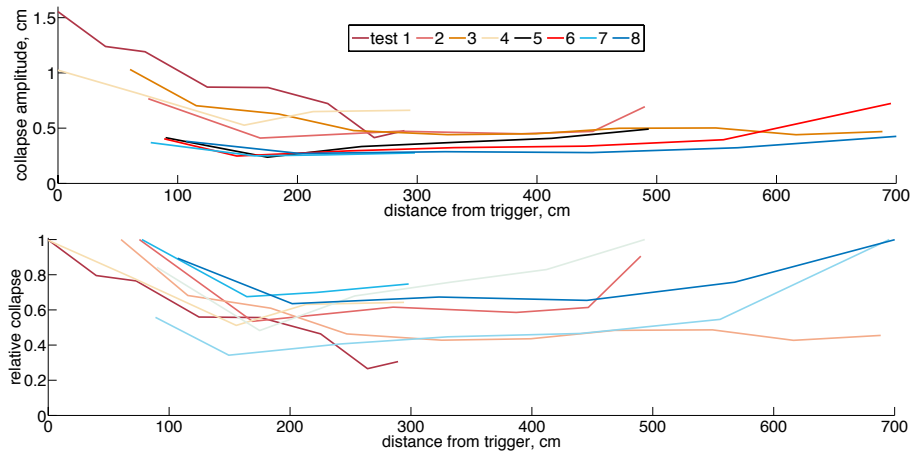


Fig. 6. Collapse vs. distance from trigger for tests 1–8. Collapse values are total displacements after movement stopped. Absolute collapse values shown in (a), collapse values normalized by the maximum collapse in each test shown in (b).

Title Page

Abstract Introduction

Conclusions References

Tables Figures

⏪ ⏩

⏴ ⏵

Back Close

Full Screen / Esc

Printer-friendly Version

Interactive Discussion



The influence of edge effects on crack propagation in snow stability tests

E. H. Bair et al.

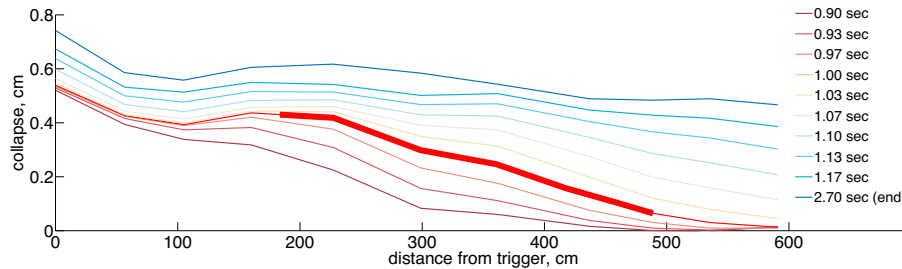


Fig. 7. Wavelength of a PST. Collapse values shown during failure. The final value at 2.7 s is the total collapse after the beam stopped moving. The thick red line shows an estimate of the section of the beam undergoing rapid collapse (phase ii in Sect. 2.3), from which wavelength was estimated. The wavelength is ~ 3 m. Test 9 shown.

Title Page

Abstract

Introduction

Conclusions

References

Tables

Figures

⏪

⏩

◀

▶

Back

Close

Full Screen / Esc

Printer-friendly Version

Interactive Discussion

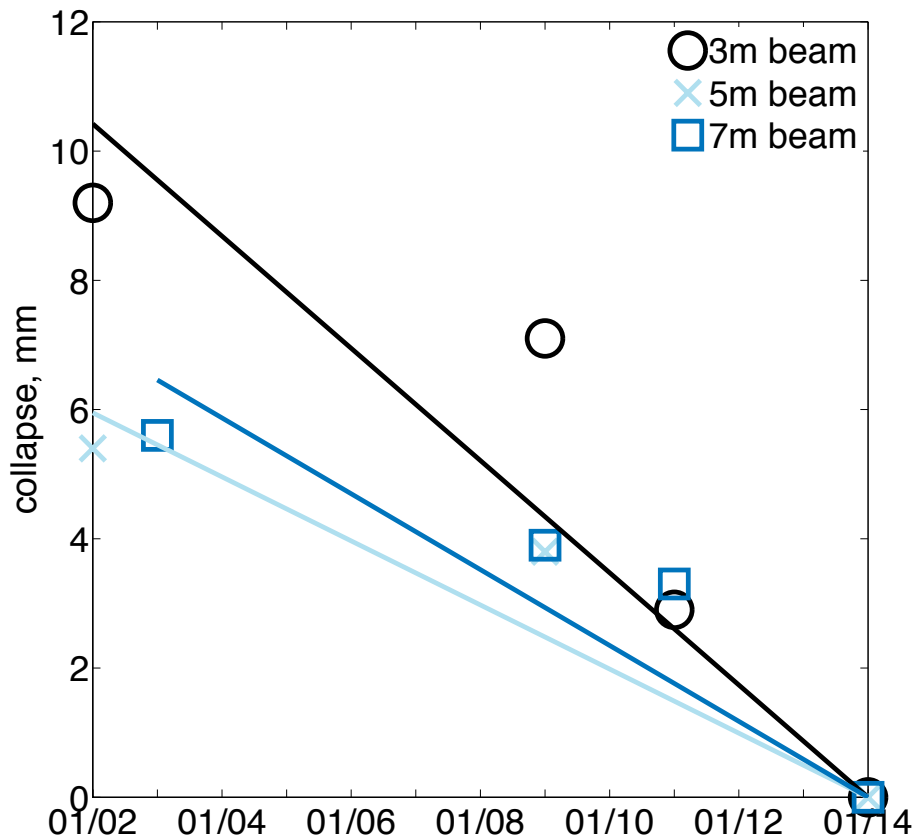


Fig. 8. Decreasing collapse amplitudes with time. Collapse amplitudes were averaged across each beam. Tests 1–8 shown. Regression lines were forced through 14 January 2013, when all tests had no propagation (collapse amplitude 0 mm). The average slope coefficient is $-0.65 \text{ mm day}^{-1}$.

Title Page

Abstract Introduction

Conclusions References

Tables Figures

◀ ▶

◀ ▶

Back Close

Full Screen / Esc

Printer-friendly Version

Interactive Discussion



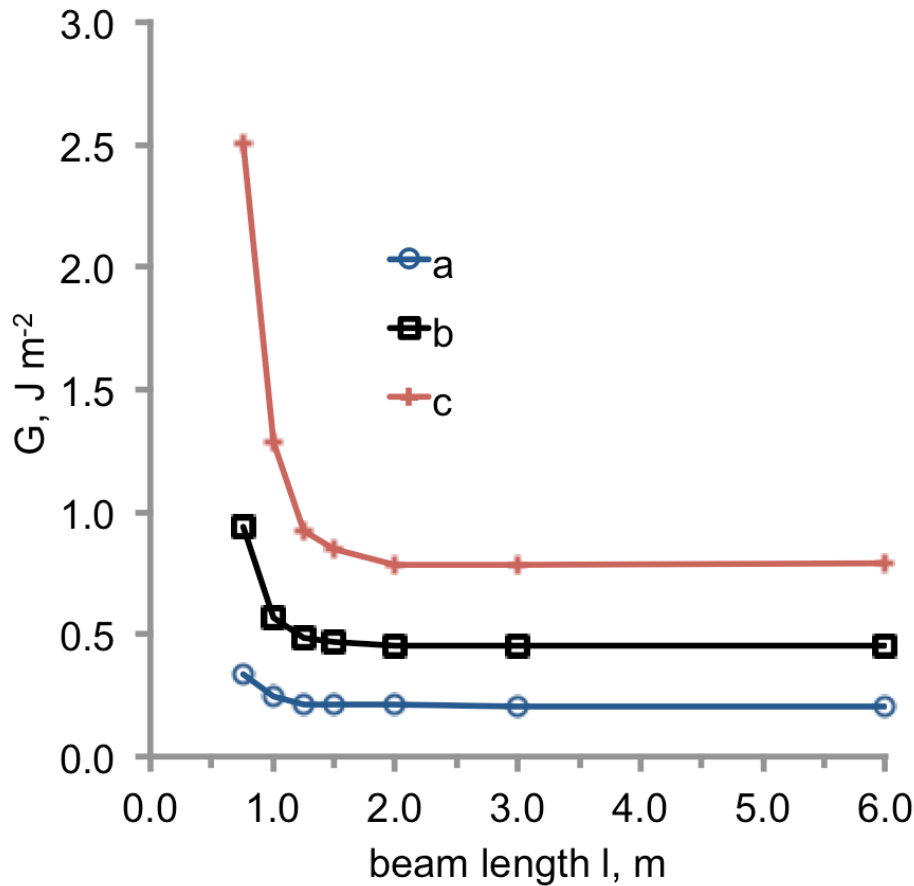


Fig. 9. Energy release rate G vs. beam length l . G is plotted for test lengths $l = 0.75$ – 6.00 m for each of the profiles in Fig. 3. For each profile, the crack length is r_c , the measured critical length from 1.4–1.5 m long field tests (Sect. 2.1).

Title Page	
Abstract	Introduction
Conclusions	References
Tables	Figures
⏪	⏩
◀	▶
Back	Close
Full Screen / Esc	
Printer-friendly Version	
Interactive Discussion	



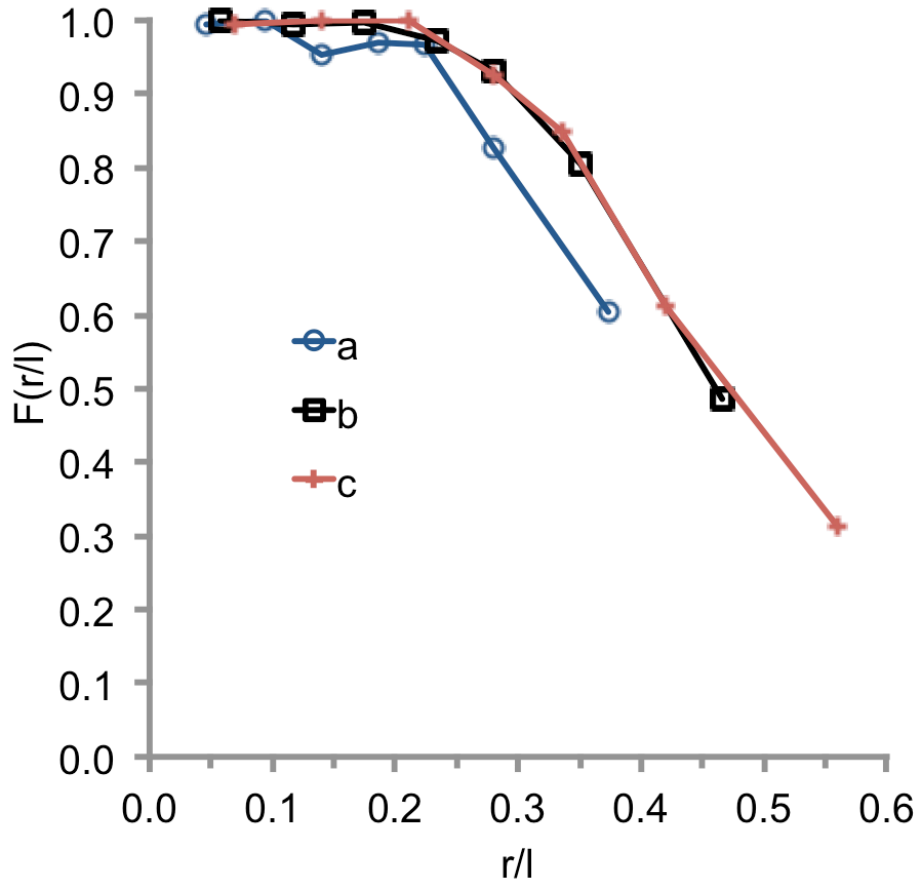


Fig. 10. Correction factor $F(r/l)$ vs. relative cut length r/l . Correction factor $F(r/l)$ from Eq. (4).

Title Page

Abstract Introduction

Conclusions References

Tables Figures

◀ ▶

◀ ▶

Back Close

Full Screen / Esc

Printer-friendly Version

Interactive Discussion

