

The microwave emissivity variability of snow covered first-year sea ice from late winter to early summer: A model study.

S. Willmes¹, M. Nicolaus² and C. Haas³

[1] University of Trier, Environmental Meteorology, 54286 Trier, Germany

[2] Sea Ice Physics, Helmholtz-Zentrum für Polar- und Meeresforschung, Bussestr. 24, 27570 Bremerhaven, Germany

[3] Earth & Space Science & Engineering, York University, Toronto, Canada

Correspondence to: S. Willmes (willmes@uni-trier.de)

revised version – 26 Feb 2014

Abstract

Satellite observations of microwave brightness temperatures between 19 GHz and 85 GHz are the main data source for operational sea-ice monitoring and retrieval of ice concentrations. However, microwave brightness temperatures depend on the emissivity of snow and ice, which is subject to pronounced seasonal variations and shows significant hemispheric contrasts. These mainly arise from differences in the rate and strength of snow metamorphism and melt. We here use the thermodynamic snow model SNTHERM forced by ERA interim data and the microwave emission model MEMLS to calculate the sea-ice surface emissivity and to identify the contribution of regional patterns in atmospheric conditions to its variability in the Arctic and Antarctic. The computed emissivities reveal a pronounced seasonal cycle with a large regional variability. The emissivity variability increases from winter to early summer and is more pronounced in the Antarctic. In the pre-melt period (January-May, July-November) the standard deviations in surface microwave emissivity due to diurnal, regional and inter-annual variability of atmospheric forcing reach up to $\Delta\varepsilon = 0.034$, 0.043, and 0.097 for 19 GHz, 37 GHz and 85 GHz channels, respectively. Between 2000 and 2009, small but significant positive emissivity trends were observed in the Weddell Sea during November and December as well as in Fram Strait during February, potentially related to earlier melt-onset in these regions. The obtained results contribute to a better understanding of the uncertainty and variability of sea-ice concentration and snow-depth retrievals in regions of high sea-ice concentrations.

20

1 Introduction

The temporal and spatial variability of sea ice coverage and its physical properties are operationally observed with satellite passive microwave radiometers for more than 30 years (e.g. Eisenman et al., 2014; Stroeve et al., 2012; Cavalieri and Parkinson, 2008; Parkinson and Cavalieri, 2008). Sea-ice concentration, the fractional coverage of sea ice per total area, is one of the most important parameters in an operational global monitoring of the polar oceans. It is derived daily in the Arctic and Southern Ocean (e.g. Spreen et al., 2008; Markus and Cavalieri, 2000; Comiso et al., 1997; Cavalieri et al., 1996) based on the microwave emissivity contrast of sea ice and the open ocean at microwave frequencies from 18 GHz to 90 GHz (e.g. Comiso, 1986; Eppler et al., 1992; Cavalieri et al., 1997; Lubin et al., 1997; Svendsen et al., 1987). These methods rely on emissivity proxies that are derived from the

30

microwave brightness temperature (T_b) data at different channels and polarizations. From a comparison with field data or other ground-truth references tie points or transfer functions are deducted to allow for an inversion from microwave measurements to sea-ice concentration or also surface properties like snow thickness or ice type (Markus and Cavalieri, 1998). Critical to this inversion are, however, seasonal and regional variations in the surface microwave emissivity that are caused by differences in atmospheric forcing and associated snow processes (Meier and Notz, 2010; Markus et al., 2006; Cavalieri et al., 1995; Gloersen and Cavalieri, 1986). As shown by Andersen et al. (2007) variations in sea-ice concentration retrievals over high-concentration Arctic sea ice are dominated by variations of snow emissivities. Their study concludes that long-term trends in surface and atmospheric properties may influence computed trends in sea-ice extent and area through their undetermined impact on microwave emissivities. Here we examine the impact of atmospheric conditions on snow properties and resulting emissivities to provide one constraint for better understanding of the various contributors to ice concentration retrieval uncertainty.

As far as hemispheric contrasts are concerned the seasonal progression of snow melt differs significantly between the Arctic and the Antarctic (Andreas and Ackley, 1982; Nicolaus et al., 2006). In the Arctic, the stage of advanced melt (Livingstone et al., 1997) characterized by persistent melt water saturated snow is dominant during summer (Comiso and Kwok, 1996; Garrity, 1992). However, diurnal freeze-thaw cycles prevail on Antarctic sea ice (Willmes et al., 2006, 2009). The microwave emissivity of snow-covered sea ice is not only sensitive to the presence of melt water but varies in magnitude along with the seasonal changes that occur in snow stratification, grain sizes, density and the formation of ice layers already during the pre-melt period. For example, Cavalieri et al. (1990), Comiso et al. (1997) have described how layered snow and the associated presence of ice crusts and lenses cause a low sea-ice concentration bias. Similarly, effects of snow layering during late summer on sea-ice concentration retrievals were evaluated by Markus and Dokken (2002).

In this paper we investigate some of the underlying causes of sea-ice concentration retrieval uncertainty, namely the temporal variability of the microwave emissivity of snow-covered first-year sea ice (FYI), in response to variable atmospheric conditions. Using a combined thermodynamic/microwave snow and ice model forced by meteorological reanalysis data, we examine atmospherically driven snow metamorphism and its effect on the microwave emissivity of snow-covered sea ice in different regions of the Arctic and Antarctic. By using

an identical, idealized initial snow cover throughout, we separate atmospheric effects from potential emissivity differences due to different regional snow and ice properties, or processes like snow accumulation, flooding and the effect of basal heat fluxes. Our snow cover is only modified by typical atmospheric forcing in either hemisphere. We want to identify the contribution of temporal and regional patterns in atmospheric energy fluxes to surface emissivity variations on Arctic and Antarctic sea ice and the resulting hemispheric contrasts in the seasonal Tb variability. We use the one-dimensional snow model SNTHERM (Jordan, 1991; Nicolaus et al., 2006) and the Microwave Emission Model for Layered Snowpacks (MEMLS, Wiesmann and Mätzler, 1999), adapted to snow on sea ice by Tonboe et al. (2006). Our approach represents an experimental study where we assume initial snow conditions at the start of simulations and quantify the impact of seasonal snow metamorphism in the absence of accumulation. With this setup we focus on emissivity variations in areas with high ice concentrations as described by Andersen et al. (2007) and we provide a dataset of the seasonal variability and regional specifications of the microwave emissivity variability of FYI in the 19 to 85 GHz frequency range. These data contribute to a better understanding of the uncertainty and variability of sea-ice concentration and snow-depth retrievals in regions of high sea-ice concentrations (Andersen et al., 2007; Markus et al., 2006; Comiso et al., 1997; Cavalieri, 1994).

2 Data and Methods

2.1 The snow model

Physical snow properties of a layered snow pack on sea ice are simulated by the one-dimensional energy- and mass-balance model SNTHERM. The model was created by Jordan (1991) and adapted and applied to sea ice by Jordan et al. (1999) and Andreas et al. (2004). Here we use the latest version by Nicolaus et al. (2006) and perform similar experiments, starting each simulation with a new initialization in winter (Arctic: January, Antarctic: July). We chose SNTHERM since it allows for high-resolution (mm-scale) simulations of the seasonal evolution of a snow pack on sea ice as a function of atmospheric forcing and initial stratigraphy. Representing all snow layers by distinct control volumes in a moving vertical grid has the advantage of treating natural stratigraphic units within the snow. SNTHERM was forced with six-hourly data of the 2 meter air temperature, relative humidity, 10 meter wind

speed, incoming shortwave radiation and downward longwave radiation obtained from the European Center for Medium Range Weather Forecast (ECMWF) ERA interim reanalysis data at 0.75° resolution (Dee et al., 2011).

100 2.2 The microwave model

The Microwave Emission Model for Layered Snowpacks (MEMLS, Wiesmann and Mätzler, 1999; Mätzler and Wiesmann, 1999) is used to compute microwave brightness temperatures from vertical snow profiles. We use a sea ice version of MEMLS (Tonboe et al., 2006; Tonboe, 2010) to account for the effect of sea-ice dielectric properties on microwave
105 brightness temperatures. The model calculates T_b at frequencies between 5 GHz and 200 GHz for vertical and horizontal polarizations. Here we use T_b values at frequencies of 19 GHz, 37 GHz and 85 GHz (hereafter referred to as 19V, 19H, 37V, 37H, 85H and 85V), to compare results with the sensors used in operational satellite microwave monitoring, i.e. the Special
110 Sensor Microwave Imager (SSM/I) radiometer and (with similar frequencies) the Advanced Microwave Scanning Radiometer (AMSR). All simulations are at 50° incidence angle, as typical for conically scanning radiometers. Although we had to choose specific frequencies and incidence angles for this study, results are also representative for adjacent frequencies and incidence angles.

115 2.3 Combined model study

SNTHERM and MEMLS are used in a combined model study to infer the temporal evolution of sea-ice microwave brightness temperatures for typical atmospheric forcing conditions in the Arctic and Antarctic. Since the main drivers for snow metamorphism are temperature and moisture gradients within the snow, both of which are predominantly influenced by
120 atmospheric conditions, we neglect basal (ocean) heat flux and sea-ice growth. Moreover, when the snow wettens in the lower snow layers, the snow-ice interface will be close to melting, independent of heat flux through the ice (Nicolaus et al., 2009).

We perform our experiments with 60 cm of sea ice with a density of 910 kg/m³ that is covered with an initial snow profile of 30 cm thickness. The snow layer at initialization is represented
125 by 30 layers of 1 cm thickness with a density of 320 kg/m³ and a snow grain size of 1 mm. Below the snow we add 12 layers of sea ice with 5 cm thickness and a salinity of 7 ppt. These

initial conditions are idealized and not representative of regional differences in snow depth and snow stratigraphies (e.g. Warren et al., 1999, Powell et al., 2006; Massom et al., 2001; Nicolaus et al., 2009). However, identical initial conditions are required to facilitate the
130 isolated analysis of atmospheric effects on emissivities alone and regional differences. In
defining the presented snow initialization we consider the mentioned studies addressing first-
year sea ice snow properties in both hemispheres and use this as an experimental setup that
combines characteristics of both hemispheres. This approach enables us to identify the net
effect of atmospheric forcing on regional changes in the microwave emissivity, without strong
135 impacts of the initial (winter) snow properties.

The temperature in the lowest ice layer is assumed to be at the freezing point of -1.8°C while
the initial snow surface temperature is set to the ERA interim air temperature for each location
and year. Linear temperature profiles are assumed in sea ice and snow with the temperature at
the snow/ice interface representing one third of the total temperature gradient from the sea-ice
140 bottom to the snow surface, according to the typical thickness and thermal conductivities of
snow and ice.

We forced SNTHERM with six-hourly ERA interim reanalysis data for 10 years (2000 to
2009), at 34 locations for 8 different regions in the Arctic (January to June) and at 29
locations for 6 regions in the Antarctic (July to December, Figure 1) where sea ice is regularly
145 present at the start of simulations and on average persists at least until May (Arctic) or
November (Antarctic).

The interface between the snow and the emission model is provided by the vertical profiles of
snow temperature, density, grain size and wetness. The optical grain diameter d_o provided by
SNTHERM was recalculated into the exponential correlation length p_{ex} for usage in MEMLS
150 according to Equation 1, where ρ_s and ρ_i are snow and ice densities in kg/m^3 , respectively
(Mätzler, 2002).

$$p_{ex} = F \cdot d_o \cdot (1 - \rho_s \cdot \rho_i^{-1}) \quad (1)$$

155 The scaling coefficient F in Equation 1 is adjusted to ensure the best alignment of our
simulated T_b data with the NasaTeam FYI tie points (Cavalieri et al., 1994) after 5 days of
SNTHERM spin-up time. In doing so, a value of 0.12 was obtained for F . The use of a

correlation length correction scheme for microwave modeling has recently also been demonstrated by previous studies. Wiesmann et al. (2000) obtained best results for the combination of SNTHERM and MEMLS when p_{ex} was calculated by scaling d_0 with a value of 0.16. Durand et al. (2008) applied a linear relationship between p_{ex} and the natural logarithm of the maximum grain diameter, while Langlois et al. (2012) and Montpetit et al. (2013) used an approach similar to equation 1, including an additional factor of 2/3 according to Mätzler (2002) and obtained scaling coefficients of 0.1 and 1.3, respectively. In general, the calculation of correlation lengths and choice of correction factors depends on the applied model combinations.

2.4 Satellite Tb data

In many algorithms, microwave brightness temperatures are used in form of either a polarization ratio (PR, eq. 2) or a gradient ratio (GR, eq. 3) using different microwave polarizations and frequencies (Cavalieri et al., 1984).

$$PR = (19V-19H) \cdot (19V+19H)^{-1} \quad (2)$$

$$GR = (37V-19V) \cdot (37V+19V)^{-1} \quad (3)$$

These two parameters eliminate the effect of actual snow surface temperatures on observed brightness temperatures, such that changes of PR and GR are only due to emissivity changes in the footprint of the radiometer. Here, we use PR and GR, together with the microwave emissivities at different polarizations and frequencies to investigate their seasonal changes in context with the prevailing atmospheric forcing in different regions.

For a comparison with satellite data we use the DMSP SSM/I-SSMIS Daily Polar Gridded Brightness Temperatures dataset (Maslanik and Stroeve, 2004) provided by the U.S. National Snow and Ice Data Center (NSIDC). Sea Ice Concentrations from Nimbus-7 SMMR and DMSP SSM/I-SSMIS Passive Microwave Data product (Cavalieri et al., 1996) were used to create a subset of satellite microwave brightness temperatures at high sea-ice concentrations only since our results represent emissivity changes in regions of 100% ice concentration.

3 Results

3.1 Comparison of simulated and observed brightness temperatures

190 With our simulations we do not aim to achieve a high point-to-point agreement between observations and simulations because we cannot properly include the effects of surface processes like snow accumulation and redistribution, flooding, snow ice formation. Moreover, the applied simplifications (equal snow pack at initialization) and the additional impact of open water and sea-ice drift on observed T_b complicate a point-to-point comparison of our
195 results with satellite data. Instead, the objective of our study is to quantify the net effects of regionally and temporally variable atmospheric conditions on snow metamorphosis and its impact on emissivity, and to isolate these effects from those other surface processes.

Figure 2 a and b show the PR and GR ratios obtained from simulated brightness temperatures for the Arctic and Antarctic, respectively. In addition, the figures show PR and GR ratios
200 from observed brightness temperatures extracted from the daily polar gridded satellite data sets for all regions where the sea-ice concentration exceeds 90%. As expected, the simulated data are closely aligned with the 100% sea-ice concentration lines (white dotted, Cavalieri et al., 1984, 1994). However, PR and GR ratios show a larger range of variability and scatter in the Antarctic than in the Arctic, both in observations and simulations. In general, the
205 simulated data cover a narrower range of PR/GR ratios than observed data. This is mostly due to the fact that the model results (point-scale) represent 100% sea ice concentration, whereas observed data have been extracted for sea-ice concentration $>90\%$, and therefore are affected by emissivity variations arising from different open water fractions, surface heterogeneity and sea-ice drift. Since the simulated data represent a sea-ice concentration of 100% the presented
210 PR/GR variability arises exclusively from changes in the snowpack. The last month of simulations (Arctic: June, Antarctic: December) is highlighted by red dots to indicate the effect of beginning melt processes. In June in the Arctic, there is a pronounced cluster of melt signals with GR values close to zero. In the Antarctic there is less change of PR and GR ratios at the beginning of summer, i.e. in December. The frequency distributions of simulated and
215 observed PR and GR values in the bottom of Figure 2a and b indicate a small bias between observed and simulated data, and narrower distributions with less variability of the simulated data. Although the simulated values are within a realistic range of observed PR and GR, the simulations indicate on average higher PR (Arctic: +0.005; Antarctic: +0.002) and lower GR (Arctic: -0.005; Antarctic: -0.014). Possible reasons for these differences were introduced

220 above. Notable is also a large contribution of simulated GR values close to zero especially in
the Arctic, which is not found in the observed data. These GR values are caused by melting
snow and result only from data in the last month of simulations (Arctic: June). We suggest
that due to different open water fractions, surface heterogeneity and a lower temporal
225 resolution this signal contribution is smoothed in the observed data. As demonstrated by the
graphs, the hemispheric differences that are found in the satellite data, i.e. the frequency
distribution of PR is flatter and low GR values are less frequent in the Antarctic than in the
Arctic, are also present in the simulated data.

Figures 2c and d show associated brightness temperatures and their frequency distributions.
Modal values of observations and simulations are similar, and the distributions of simulated
230 brightness temperatures are narrower as for the PR and GR ratios. However, in addition,
simulated 19V and 37V brightness temperatures show an additional peak at high temperatures
of 273 K.. In both hemispheres, Tb values of 273 K are reached in the simulations when the
snow starts to melt. This behaviour is not clearly seen in the observed Tb which is probably
due to the melt signal being smoothed by different open water fractions and surface
235 heterogeneity within the sensor footprint.

The SNTHERM snow pack evolution for two locations in the Arctic and Antarctic is
presented in Figure 3a and 3b, respectively. The two profiles are characteristic of the general
hemispheric differences in snow pack evolution described by Nicolaus et al. (2006). In the
Arctic, melting does not occur before mid June and is followed by a rapid thinning and
240 disappearance of the snow while density changes in the pre-melt period are only small and
grain sizes increase predominantly from the bottom. In contrast, in the Antarctic, the first melt
event occurs already in July and is followed by multiple freeze-thaw cycles, which cause a
layering of the snow, together with increasing densities and increasing grain sizes also in the
upper layers.

245 Time series of associated simulated and observed 19H, 19V, 37H and 37V brightness
temperatures are shown in Figure 3c, d together with the coincidentally retrieved sea-ice
concentration at the respective grid points. The simulated data are very smooth in comparison
to satellite Tb, while occasionally simulated larger peaks and excursions are also found in the
observed Tb, however, superimposed to a substantially larger background variability.
250 Especially when the snow is dry, the observed Tb variability is likely a consequence of other
temporal changes of ice and snow properties at the respective grid points, e.g. due to

variations in roughness, age and salinity of thin ice (e.g. Eppler et al., 1992). The largest differences between simulations and observations are found for Arctic PR values which is mainly due to the fact that the simulations overestimate 19V by approximately 5 K on average
255 which could be an effect of the snow depth of 30 cm being overestimated in this location.

3.2 The simulated microwave emissivity variability

Simulated microwave emissivities at 19, 37 and 85 GHz show pronounced seasonal changes within the considered period (Figure 4). The average magnitude of seasonal changes for all
260 presented frequencies and both polarizations is stronger in the Arctic than in the Antarctic, with a substantial increase occurring in the month of June in the former (Figure 4a, c). This emissivity increase is attributed to the onset of the advanced melt stage (Livingstone et al., 1997; Drobot and Anderson, 2001; Markus et al., 2009; Belchansky et al., 2004), when the presence of melt water within the snow becomes persistent throughout the day. While all
265 channels reach values up to 1 during June in the Arctic, minimum average seasonal emissivity values are as low as of 0.68 (0.65) for 85V (85H), 0.85 (0.79) for 37V (37H) and 0.94 (0.86) for 19H (19V). In the Antarctic (Figure 4b, d) the seasonal emissivity minima are on average 0.03 and 0.01 higher than in the Arctic for 85 and 37 GHz channels respectively. The inter-annual average of maxima does not reach a value of 1 and is 0.97 (0.87) for 19V (19H), 0.94
270 (0.87) for 37V (37H) and 0.85 (0.79) for 85V (85H).

In the Antarctic the regional differences in emissivities are more distinct than in the Arctic. The advanced melt stage is found with much lower probability than in the Arctic (Willmes et al., 2006, 2009). The observed tendency towards higher emissivities in the Antarctic at the beginning of summer is rather an effect of averaging single profiles where temporally limited
275 thaw events causing very high emissivities for the duration of melt are occurring at different points in time. The different melt process in the two hemispheres are described by a study of Nicolaus et al. (2006). They show that the impact of melting and sublimation/evaporation on the snow cover decrease is very different between Arctic and Antarctic, e.g. the ratio of evaporated snow mass to melted snow mass per unit area amounts to approximately 4.2 in the
280 Antarctic and only 0.75 in the Arctic, which certainly also impacts the evolution of microwave emissivities.

3.3 Initialization effects

285 Results of our simulations strongly depend on the assumed initial snow properties. As explained above, we have assumed an identical initial snow cover for all regions to be able to consider regional differences of temporally changing emissivities due to seasonally changing atmospheric conditions only. In this section we show how variations of initial snow properties affect the mean emissivity computed by SNTHERM and MEMLS, which are then subsequently modified by seasonal atmospheric changes.

290 In order to do so, we performed test runs with both models by varying the assumed sea ice salinity of 7 ppt (in MEMLS) by ± 5 ppt (S02, S12) as well as the initial snow profile (for SNTHERM) in grain size (+0.5 mm, dg15), thickness (15 cm and 50 cm, zs15, zs50) and density (± 50 kg/m³, D270, D370); wetness is always set to zero at the start of simulations. Additionally, one test run was performed, where a thin ice layer was included at a snow depth
295 of 10 cm (lay1). This approach revealed that the mean emissivity is biased by initialization, while its diurnal, regional and temporal variability (all three expressed in combination by monthly standard deviations) as well as hemispheric differences change in the same ways regardless of the mean signal. (Table 1). The 37 GHz and 85 GHz frequencies are much more sensitive to initialization during the pre-melt period than 19 GHz which is an effect of their
300 smaller penetration depth in comparison to 19 GHz and the resulting larger impact of changes in the snow cover. If an initial snow density of 270 kg/m³ is assumed in the snow pack, the mean 19V emissivity in the WW region in October decreases from 0.946 to 0.934, while a change from 0.873 to 0.832 and from 0.738 to 0.659 is noted for 37V and 85V, respectively. The associated changes in the monthly standard deviation depend on the introduced changes
305 in initialization. For D270 they amount to +0.01 (19V), +0.01 (37V) and +0.02 (85V) and for D370 the standard deviation decreases by -0.02 (37V) and -0.01 (85V), respectively. In general, Table 1 indicates that in thinner snow an increased microwave emissivity variability, i.e. its diurnal, regional and inter-annual standard deviation, can be expected (zs15). The same holds when snow grains are larger at the beginning of initialization (dg15). The impact of the
310 initial sea-ice salinity (S02, S12) and the presence of ice layers (lay1) on the simulated emissivity variability is very small. As such, Table 1 provides insight into the sensitivity of our results to ambiguities in the chosen snowpack initialization.

315 3.4 Regional and hemispheric differences

Figure 5 shows the mean and standard deviations of emissivities computed during standard runs (compare Table 1) for different regions, polarizations, and frequencies, for the 4th month of simulations (Arctic: April, Antarctic: October). It can be seen that the different regions show differences of up to 0.01, 0.04 and 0.07 in their emissivity variations (std. deviation) for 320 19V, 37V and 85V, respectively. In general, the Antarctic regions show a larger range of emissivity values with a tendency towards higher mean emissivities than in the Arctic. The hemispheric contrast is even more pronounced in the PR and GR variabilities (Figure 5e, f). While both, PR and GR variabilities are small in the Arctic, the Southern Ocean (except Indian Ocean IO) shows significantly larger mean values and regional standard deviations in 325 both parameters.

This finding also holds for the other months of the pre-summer period (data in supplementary Table S1). Within hemispheres, the regional variability is weaker in the Arctic than in the Southern Ocean. The NP, FS, BR and KS regions reveal a stronger range of emissivities than the other Arctic regions. As these regions are closer to the open water and marine climate of 330 the North Atlantic, the larger variability in these regions could be due to the potential earlier occurrence of short freeze-thaw events. In the Antarctic, the largest emissivity ranges are found in the Weddell Sea (WW, WS), Ross Sea (RS) and Bellingshausen/Amundsen Sea (BA). When melt processes start (June, December), the emissivity range per region is largest, since the high emissivities at times when melt started already are contrasting those when and 335 where it did not. An exception is found in the IO and WS regions where the emissivity variability stays close to the pre-melt period also in December (Table S1). We provide standard deviations of the mean microwave emissivity per month, region, frequency and polarization in the supplementary table S1. These values can be used as a reference to assess the sensitivity of tie points for satellite retrievals of sea-ice concentration and snow thickness 340 to emissivity variations.

The average seasonal evolution of the microwave emissivity variability as well as of PR and GR in both hemispheres is shown in Figure 6. The diurnal and regional emissivity variability increases from late winter to early summer for all frequencies in both hemispheres while it is in general larger in the Antarctic throughout the season (Figure 6a, crosses). The Arctic 345 experiences the largest increase in emissivity variability from the months of May to June, when persistent melt commences in some regions. The hemispheric contrast increases with

frequency. Similar observations hold for the monthly values of PR and GR (Figure 6b). Especially the GR variability during the pre-melt period is more pronounced in the Antarctic. In comparison to Figure 5 the presented values point out that the regional emissivity
350 variability can deviate substantially from the average hemispheric variability. For example, the standard deviation of 37V during October is 0.038 in the BA region and 0.018 in the WP region (compare Figure 5b), while it is 0.029 when the entire Antarctic is considered. This finding is critical for the formulation of tie points that are valid for an entire hemisphere and suggests that regional differences should be taken into account.

355

3.5 Hemispheric characteristics

Here we examine which snow processes could be most relevant for the simulated differences in emissivity variations in both hemispheres. Two key properties are penetration depth and snow density. Their temporal changes are shown in Figure 7. We calculated the penetration
360 depth by accumulating layer transmissivities and determining the depth at which a fraction of $1/e$ of the signal contributes to the emitted signal at the surface. Maximum values were constrained to the maximum snow depth of 30 cm (snow penetration depth). Figure 7 a shows that the mean monthly microwave snow penetration depth decreases from winter to summer. In month 6, it is lower in the Arctic than in the Antarctic (12.5 cm vs. 20 cm). At 37 GHz the
365 penetration depth in the Arctic starts to deviate from the Antarctic already during month 5 (May/November) with a value of 17 cm (Antarctic: 19 cm) and 10 cm (Antarctic: 17 cm) in month 6 (June/December). The rate at which the penetration depth decreases throughout the season is smaller for 19 GHz than for 37 GHz. This is due to the stronger sensitivity of Tb values at 37 GHz than at 19 GHz to atmospheric variability and associated changes in the
370 vertical snow profile. In the pre-melt period, the bulk snow density increases on average faster in the Antarctic (Figure 7b). This is rapidly reversed when the advanced melt starts in the Arctic in June and wet snow with high densities is prevalent. Monthly hemispheric average 37V emissivities are higher in the Antarctic (Figure 7c) and less sensitive to a decrease in penetration depth before the melt season starts. This reveals that the processes that cause the
375 penetration depth to cease throughout the season have a larger impact on the mean 37V emissivity in the Arctic than in the Antarctic. As shown above, however, this does not hold for the emissivity variability, which is larger in the Antarctic.

3.6 Multiyear emissivity trends

380 Multiyear emissivity trends from 2000 to 2009 were derived for both hemispheres and for all
regions separately. Although we recognize that the 10 years period is rather short for a trend
analysis we chose to present these trends as shifts in seasonal transitions have been reported
by e.g. Markus et al. (2009). Our data revealed that significant trends (level of significance
 $\alpha=0.05$) of increasing emissivity are found almost exclusively in the Weddell Sea (WS)
385 region for all channels (except 19H) in the months of November and December. Although
being small (0.01, 0.04 and 0.08 per decade in the month of December for 19V, 37V and 85V,
respectively) the 10 years time series gives an indication for a tendency towards larger
emissivities that might be associated with increased melt rates or earlier melt onset. Apart
from the Weddell Sea, small but significant trends are only found for the Fram Strait region in
390 February (19V: 0.005/decade, 37V: 0.007/decade) and for BF in June (85H: 0.04/decade).
Although the time series is rather short the positive emissivity trend in the Weddell Sea is
mostly caused by an increasing impact of melt events during the months of November and
December. This means that an emissivity increase will saturate when melt events become
characteristic for the advanced melt stage (Livingstone et al., 1997) and not continue at the
395 same rate.

4 Discussion

In comparison to e.g. Montpetit et al. (2013), Brucker et al. (2011), this study does not intend
to realistically simulate measured Tb values and their changes because there are too many
400 ambiguities arising from the comparison of point-scale and satellite data mentioned above.
Instead of accurately simulating real snow packs and associated Tb data, we focus on
studying the impact of atmospheric forcing on emissivity variations for an idealized snow
pack and determine its regional and hemispheric characteristics. We believe that this approach
and the obtained emissivity variations reveal what we call the “background emissivity
405 variability” due to atmospheric forcing which we propose is the minimum natural emissivity
variation that has to be considered when evaluating ice concentration retrievals for regions
with high-ice concentrations in a seasonal and regional context. As such, our study extends
the conclusion of Andersen et. al (2007) who showed that especially at high sea-ice
concentrations, ice concentration accuracy suffers from emissivity variations in the snowpack.

410 It is well known that the inherent noise of sea-ice concentration retrievals is on average as high as $\pm 5\%$ (Meier and Notz, 2010, Meier, 2005). With the results presented here, we provide some context for these variations in high ice-concentration regions and show regional and seasonal differences. Sources of ambiguity for sea-ice concentration and snow depth retrieval are manifold and variations in emissivity just represent one problem next to
415 spatial inhomogeneity of surfaces, the presence of thin ice (Kwok et al., 1997) and atmospheric disturbances (e.g. Cavalieri et al., 1995; Markus and Dokken, 2002; Spreen et al., 2008). We consider the presented emissivity variability representative for the atmospherically induced variability found over high-concentration sea ice. Even if an algorithm would implement monthly tie points to account for seasonal variations and weather effects, this tie point would
420 be subject to the regional, diurnal and inter-annual emissivity variations inherent to a specific region.

We speculate that atmospheric water vapor, cloud liquid water and rain could probably smooth the emissivity variability we present here. Nevertheless, we consider our results as a seasonal background variability that needs to be taken into account even when weather filters
425 are applied since these filters are implemented to reduce the impact of the atmosphere on upwelling brightness temperatures, not to reduce the impact of atmospheric-induced surface emissivity variations due to atmospheric forcing (Gloersen and Cavalieri, 1986).

An assessment of the contribution of different sources for varying brightness temperatures over high-concentration sea ice goes beyond the scope of this paper. The simplification that
430 snow fall is not considered might cause an underestimation of snow compaction which could result in a bias of mean brightness temperatures. The monthly emissivity variations due to seasonal changes will however be less affected by the missing accumulation, which is indicated by the low sensitivity of emissivity variability in SNTHERM initialization. We did not include the effect of flooding and snow ice formation and hence, the contribution of salty
435 slush and gap layers (Ackley et al., 2008) that probably play an important role for microwave brightness temperatures found over Antarctic sea ice as well (Massom et al., 2001; Haas et al., 2001; Nicolaus et al., 2009). A completely new thermodynamic snow/ice model would be required to simulate these processes and thereby enable an assessment of combined snow and ice ambiguities and their regional characteristics.

440 A monthly and regionally determined microwave emissivity variability as presented in this study can help in determining optimized tie points for the definition of transfer functions from

satellite measurements of the surface brightness temperature over high-concentration sea ice to surface properties. In addition, the potential for an improved snow depth retrieval can be investigated from the combined snow and microwave data.

445

5 Conclusions

The thermodynamic snow model SNTHERM and the microwave emission model for layered snowpacks (MEMLS) were used to identify the contribution of regional patterns in atmospheric energy fluxes to surface emissivity variations on Arctic and Antarctic sea ice
450 between 2000 and 2009.

The microwave emissivities at 19, 37 and 85 GHz are characterized by a pronounced seasonal variability. The combined regional, diurnal and inter-annual emissivity variability increases from winter to early summer and Antarctic regions are affected by a larger range of emissivity values with a tendency towards higher mean emissivities than in the Arctic. In the pre-melt
455 period, the variations in surface microwave emissivity due to diurnal, regional and inter-annual variability of atmospheric forcing reach up to 0.034, 0.043, and 0.097 for 19 GHz, 37 GHz and 85 GHz channels, respectively (Table S1). Given an emissivity contrast of sea ice and calm open water which amounts to approximately 0.4, 0.3 and 0.1 for 19V, 37V, and 85V, respectively (Eppler et al., 1992) these computed emissivity variabilities would imply
460 significant complications for the discrimination between sea ice and open water in the late spring / early summer season especially at 85 GHz and similar frequencies.

Over the simulation period significant positive emissivity trends are found in the Weddell Sea region for all channels (except 19H) in November and December, which might be associated with increased melt rates or earlier melt onset.

465 The obtained emissivity data characterize the background emissivity variability of snow-covered first-year sea ice due to atmospheric forcing and contribute to a better understanding of sea-ice concentration and snow-depth product accuracies at high sea-ice concentrations. The results need to be interpreted in the context of assumptions and simplifications.

470

Acknowledgements

This work was supported by the Deutsche Forschungsgemeinschaft (DFG) in the framework of the priority programme ‘Antarctic Research with comparative investigations in Arctic ice areas’ by a grant to WI 33114/-1 and WI 3314/-2. We are very grateful to Rasmus T. Tonboe from the Danish Meteorological Institute who kindly provided his sea ice version of MEMLS. Sea-ice brightness temperatures and sea ice concentrations were provided by the U.S. National Snow and Ice Data Center (NSIDC). The European Center for Medium Range Weather Forecast (ECMWF) offered ERA interim data free of charge. Leif Toudal Pedersen, Rasmus Tonboe and Günther Heinemann provided very valuable comments on this research. We also acknowledge the very detailed and helpful reviews by three anonymous referees.

References

- Ackley, S. F., Lewis, M. J., Fritsen, C. H. and Hongjie, X.: Internal melting in Antarctic sea ice: Development of “gap layers”, *Geophys. Res. Lett.*, 35, L11502, doi:10.1029/2008GL033644, 2008.
- Andersen, S., Tonboe, R., Kaleschke, L., Heygster, G., and Pedersen, L. T.: Intercomparison of passive microwave sea ice concentration retrievals over the high-concentration Arctic sea ice, *J. Geophys. Res.*, 112, C08004, doi:10.1029/2006JC003543, 2007.
- Andreas, E. L., and Ackley, S. F.: On the differences in ablation seasons of Arctic and Antarctic sea ice, *J. Atmos. Sci.*, 389, 440–447, 1982.
- Andreas, E. L., Jordan, R. E., and Makshtas, A. P.: Simulations of Snow, Ice and Near-Surface Atmospheric Processes on Ice Station Weddell, *J. Hydrometeorol.*, 5, 611-624, 2004.
- Belchansky, G., Douglas, D. C., Mordvintsev, I., and Platonov, N.: Estimating the time of melt onset and freeze onset over Arctic sea ice area using active and passive microwave data. *Remote Sens. Environ.*, 92, 21– 39, 2004.
- Brucker, L., Royer, A., Picard, G., Langlois, A., and Fily, M.: Hourly simulations of seasonal snow microwave brightness temperature using coupled snow evolution-emission models in Quebec, Canada, *Rem. Sens. Environ.*, vol. 115, pp. 1966-1977, 2011.

- 500 Cavalieri, D. J., Gloersen, P., and Campbell, W. J.: Determination of sea-ice parameters with the NIMBUS 7 scanning multichannel microwave radiometer, *Journal of Geophysical Research*, 89, 5355-5369, 1984.
- Cavalieri, D. J., Burns, B. A., and Onstott, R. G.: Investigation of the Effects of Summer Melt on the Calculation of Sea Ice Concentration Using Active and Passive Microwave Data, *J. Geophys. Res.*, 95(C4), 5359–5369, 1990.
- 505 Cavalieri, D. J.: A microwave technique for mapping thin ice, *J. Geophys. Res.*, 99(C6), 12,561-12,572, 1994.
- Cavalieri, D. J., St. Germain, K. M. and Swift, C. T.: Reduction of weather effects in the calculation of sea-ice concentration with the DMSP SSM/I, *J. Glaciol.*, 41(139), 455-464, 510 1995.
- Cavalieri, D. J., Parkinson, C. L., Gloersen, P., and Zwally, H. J.: Sea Ice Concentrations from Nimbus-7 SMMR and DMSP SSM/I-SSMIS Passive Microwave Data, [2002-2009]. Boulder, Colorado USA: National Snow and Ice Data Center. Digital media, 1996, updated yearly.
- 515 Cavalieri, D. J., and Parkinson, C. L.: Antarctic sea ice variability and trends, 1979–2006, *J. Geophys. Res.*, 113, C7, doi:10.1029/2007JC004558, 2008.
- Cavalieri, D. J., Parkinson, C. L., Gloersen, P., and Zwally, H. J.: Arctic and Antarctic Sea Ice Concentrations from Multichannel Passive-microwave Satellite Data Sets: October 1978 to December 1996, User's Guide. NASA Technical Memorandum 104647, 17 pages, 1997.
- 520 Comiso J. C.: Characteristics of Arctic Winter Sea Ice From Satellite Multispectral Microwave Observations, *J. Geophys. Res.*, 91(C1), 975-994, 1986.
- Comiso, J. C., and Kwok, R.: Surface and radiative characteristics of the summer Arctic sea ice cover from multisensory satellite observations, *J. Geophys. Res.*, 101(C12), 28,397–28,416, 1996.
- 525 Comiso, J. C., Cavalieri, D. J., Parkinson, C. L., and Gloersen, P.: Passive Microwave Algorithms for Sea Ice Concentration: A Comparison of Two Techniques, *Rem. Sens. Environ.*, 60, 357-384, 1997.
- Dee, D. P., and 35 others: The ERA-Interim reanalysis: configuration and performance of the data assimilation system. *Q.J.R. Meteorol. Soc.*, 137: 553–597. doi: 10.1002/qj.828, 2011.

- 530 Drobot, S. D., and Anderson, M. R.: An improved method for determining snowmelt onset dates over Arctic sea ice using SMMR and SSM/I data, *J. Geophys. Res.*, 106(D20), 24,033–24,049, 2001.
- Durand, M., Kim, E. and Margulis, S.: Quantifying uncertainty in modeling snow microwave radiance for a mountain snowpack at the point-scale, including stratigraphic effects, *IEEE T. Geosci. Remote*, 46(6), 1753-1767, 2008.
- 535 Eisenman, I., Meier, W. N., and Norris, J. R.: A spurious jump in the satellite record: is Antarctic sea ice really expanding?, *The Cryosphere Discuss.*, 8, 273-288, doi:10.5194/tcd-8-273-2014, 2014.
- Eppler, D., Farmer, L., Lohanick, A., Anderson, M., Cavalieri, D., Comiso, J., Gloersen, P., 540 Garrity, C., Grenfell, T., Hallikainen, M., Maslanik, J., Mätzler, C., Melloh, R., Rubinstein, I., and Swift, C.: Passive microwave signatures of sea ice, in: *Microwave Remote Sensing of Sea Ice*, edited by: Carsey, F. D., no. 68 in *Geophysical Monograph*, American Geophysical Union, 1992.
- Garrity, C.: Characterization of Snow on Floating Ice and Case Studies of Brightness 545 Temperature Changes During the Onset of Melt, in: *Microwave Remote Sensing of Sea Ice*, edited by: Carsey, F. D., no. 68 in *Geophysical Monograph*, American Geophysical Union, 1992.
- Gloersen, P., and Cavalieri, D. J.: Reduction of Weather Effects in the Calculation of Sea Ice Concentration from Microwave Radiances. *J. Geophys. Res.*, 91(C3), 3913–3919, 1986
- 550 Haas, C.: The seasonal cycle of ERS scatterometer signatures over perennial Antarctic sea ice and associated surface ice properties and processes, *Ann. Glaciol.*, 33, 69-73, 2001.
- Jordan, R. E.: A one-dimensional temperature model for a snow cover, Special Report 91-16, U.S. Army Corps of Eng. Cold Regions Research and Engineering Laboratory, Hanover, N. H., 1991.
- 555 Jordan, R. E., Andreas, E. L., and Makhtas, A. P.: Heat budget of snow-covered sea ice at North Pole 4, *J. Geophys. Res.*, 104(C4), 7785-7806, 1999
- Kwok, R., Comiso, J. C., Martin, S., Drucker, R.: Ross Sea polynyas: Response of ice concentration retrievals to large areas of thin ice, *J. Geophys. Res.*, 112, C12012, doi:10.1029/2006JC003967, 2007.

- 560 Langlois, A., Royer, A., Derksen, C., Montpetit, B., Dupont, F., and Goïta, K.: Coupling the snow thermodynamic model SNOWPACK with the microwave emission model of layered snowpacks for subarctic and arctic snow water equivalent retrievals, *Water Resour. Res.*, 48(W12524), doi: 10.1029/2012WR012133, 2012.
- Livingstone, C. E., Onstott, R. G., Arsenault, L. D., Gray, A. L., and Singh, K. P.: Microwave
565 sea-ice signatures near the onset of melt, *IEEE T. Geosci. Rem. Sens.*, 25(2), 174–187, 1997.
- Lubin, D., Garrity, C., Ramseier, R. O., and Whritner, R. H.: Total Sea Ice Concentration Retrieval from the SSM/I 85.5 GHz Channels during the Arctic Summer, *Rem. Sens. Environ.*, 62, 63-76, 1997.
- Mätzler, C., and Wiesmann, A.: Extension of the Microwave Emission Model of Layered
570 Snowpacks to Coarse-Grained Snow, *Rem. Sens. Environ.*, 70, 317-325, 1999
- Mätzler, C.: Relation between grain-size and correlation length of snow, *J. Glaciol.*, 48(162), 461-466, 2002.
- Markus, T., and Cavalieri, D. J.: Snow Depth Distribution over Sea Ice in the Southern Ocean from Satellite Passive Microwave Data. *Antarctic Sea Ice: Physical Processes, Interactions, and Variability. Antarctic Research Series 74:19-39. Washington, DC, USA: American Geophysical Union, 1998.*
575
- Markus, T., and Cavalieri, D. J.: An enhancement of the NASA Team sea ice algorithm, *IEEE T. Geosci. Rem. Sens.*, 38(3), 1387-1398, 2000.
- Markus, T., and Dokken, S.: Evaluation of Late Summer Passive Microwave Arctic Sea Ice
580 Retrievals, *IEEE T. Geosci. Rem. Sens.*, 40(2), 348-356, 2002.
- Markus, T., Powell, D. C., and Wang, J. R.: Sensitivity of passive microwave snow depth retrievals to weather effects and snow evolution. *IEEE T. Geosci. Rem. Sens.*, 44(1), 68–77, 2006
- Markus, T., Stroeve, J. C., and Miller, J.: Recent changes in Arctic sea ice melt onset,
585 freezeup, and melt season length, *J. Geophys. Res.*, 114(C12024), doi:10.1029/2009JC005436, 2009.
- Maslanik, J., and Stroeve, J. C.: DMSP SSM/I-SSMIS Daily Polar Gridded Brightness Temperatures. Version 4, 2000-2009. Boulder, Colorado USA: NASA DAAC at the National Snow and Ice Data Center, 2004, updated 2012.

- 590 Massom, R. A., Eicken, H., Haas, C., Jeffris, M. O., Drinkwater, M. R., Sturm, M., Worby, A.
P., Wu, X., Lytle, V. I., Ushio, S., Morris, K., Reid, P. A., Warren, S. G., and Allison, I.:
Snow on Antarctic ice, *Rev. Geophys.*, 39, 413–445, 2001.
- Meier, W. N.: Comparison of passive microwave ice concentration algorithm retrievals with
AVHRR imagery in Arctic peripheral seas, *IEEE T. Geosci. Rem. Sens.*, 43(6), 1324-1337,
595 2005.
- Meier, W., and Notz, D.: A note on the accuracy and reliability of satellite-derived passive
microwave estimates of sea-ice extent, *Climate and Cryosphere Sea Ice Working Group
Consensus Document*, World Climate Research Program, 2010.
- Montpetit, B., Royer, A., Roy, A., Langlois, A. and Derksen, C.: Snow Microwave Emission
600 Modeling of Ice Lenses Within a Snowpack Using the Microwave Emission Model for
Layered Snowpacks, *IEEE T. Geosci. Remote*, 51(9) 4705-4717, 2013.
- Nicolaus, M., Haas, C., Bareiss, J., and Willmes, S.: A model study of differences of snow
thinning on Arctic and Antarctic first-year sea ice during spring and summery, *Ann. Glaciol.*,
44, 147-153, 2006.
- 605 Nicolaus, M., Haas, C., and Willmes, S.: Evolution of first-year and second-year snow
properties on sea ice in the Weddell Sea during spring-summer transition, *J. Geophys. Res.*,
114, D17109, doi:10.1029/2008JD011227, 2009.
- Parkinson, C. L., and Cavalieri, D. J.: Arctic sea ice variability and trends, 1979–2006, *J.
Geophys. Res.*, 113, C7, doi:10. 1029/2007JC004558, 2008.
- 610 Powell, D. C., Markus, T., Cavalieri, D. J., Gasiewski, A. J., Klein, M., Maslanik, J., Stroeve,
J. C., and Sturm, M.: Microwave Signatures of snow on sea ice: Modeling. *IEEE T. Geosci.
Rem. Sens.*, 44(11), 3091–3102, 2006
- Spren, G., Kaleschke, L., and Heygster, G.: Sea ice remote sensing using AMSR-E 89 GHz
channels, *J. Geophys. Res.*, 113, C02S03, doi:10.1029/2005JC003384, 2008.
- 615 Stroeve, J. C., Serreze, M. C., Holland, M. M., Kay, J. E., Maslanik, J., and Barrett, A.P.: The
Arctic's rapidly shrinking sea ice cover: A research synthesis. *Clim. Change*,
doi:10.1007/s10584-011-0101-1, 2012.

- 620 Svendsen, E., Mätzler, C., and Grenfell, T. C.: A model for retrieving total sea ice concentration from a spaceborne dual-polarized passive microwave instrument operating near 90 GHz, *Int. J. Rem. Sens.*, 8, 1479-1487, 1987.
- Tonboe, R. T., Heygster, G., Pedersen, L. T., and Andersen, S.: Sea ice emission modelling, in: *Thermal Microwave Radiation: Applications for Remote Sensing*, edited by: Mätzler, C. IET Electromagnetic Wave Series 52, London, UK, pp. 382-400, 2006.
- 625 Tonboe, R. T.: The simulated sea ice thermal microwave emission at window and sounding frequencies, *Tellus A*, 62(3), 333-344, 2010.
- Warren, S. G., Rigor, I. G., Untersteiner, N., Radionov, V. F., Bryazgin, N. N., Aleksandrov, V. and Colony, R.: Snow depth on Arctic sea ice, *J. Climate*, 12(6), 1814 – 1829, 1999.
- Wiesmann, A., Fierz, C. and Mätzler, C.: Simulation of microwave emission from physically modeled snowpacks, *Ann. Glaciol.*, 31(1),397-401, 2000.
- 630 Wiesmann, A., and Mätzler, C.: Microwave emission model of layered snowpacks. *Rem. Sens. Env.*, 70, 307-316, 1999.
- Willmes, S., Bareiss, J., Haas, C., and Nicolaus, M.: The importance of diurnal processes for the seasonal cycle of sea-ice microwave brightness temperatures during early summer in the Weddell Sea, Antarctica, *Ann. Glaciol.*, 44(1), 297-302, 2006.
- 635 Willmes, S., Haas, C., Bareiss, J., and Nicolaus, M.: Satellite microwave observations of the interannual variability of snowmelt on sea ice in the Southern Ocean, *J. Geophys. Res.*, 114, C03006, doi:10.1029/2008JC004919, 2009.

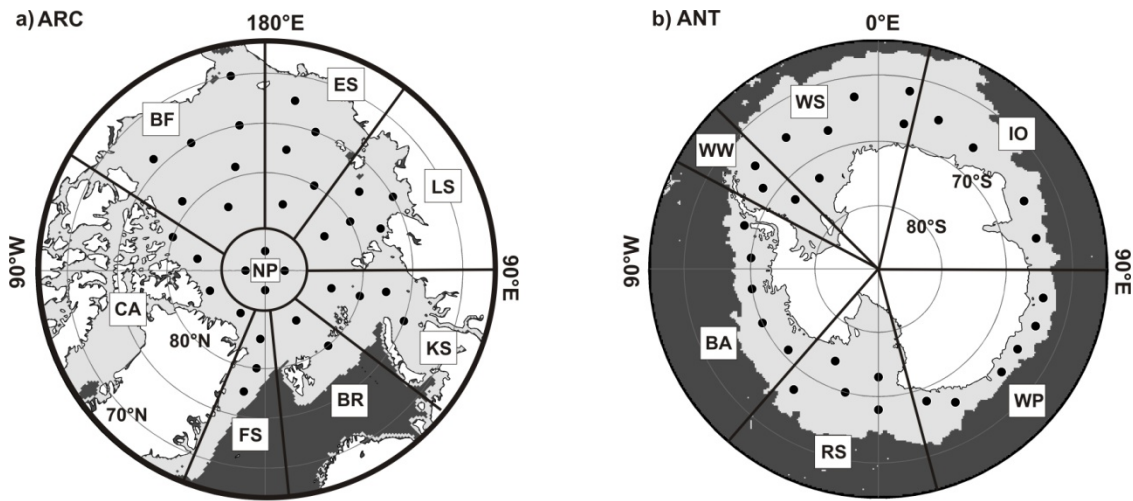
Tables and Figures

640

Table 1. Mean and standard deviation of emissivities at 19, 37 and 85 GHz (vertical polarization) for different SNTHERM initialization and MEMLS parameterization for region WW during October, derived from 4-times daily values, 2000-2009. REF: initialization profile used within this study, zs15: 15 cm snow depth, zs50: 50 cm snow depth, dg15: 1.5 mm grain size, S02: sea-ice salinity 2 ppt, S12: sea-ice salinity 12 ppt, D270: snow density 270 kg/m³, D370: snow density 370 kg/m³, lay1: an ice layer with 910 kg/m³ density is included in the middle of the profile right from the start.

		REF	zs15	zs50	dg15	S02	S12	D270	D370	lay1
e19v	mean	0.946	0.951	0.941	0.928	0.952	0.935	0.934	0.956	0.931
	std	0.01	0.01	0.01	0.02	0.01	0.01	0.01	0.01	0.01
e37v	mean	0.873	0.895	0.864	0.814	0.874	0.870	0.832	0.908	0.867
	std	0.04	0.03	0.04	0.05	0.04	0.03	0.05	0.02	0.04
e85v	mean	0.738	0.728	0.745	0.660	0.737	0.737	0.659	0.808	0.743
	std	0.07	0.08	0.07	0.09	0.07	0.07	0.09	0.06	0.08
PR	mean	0.048	0.049	0.046	0.046	0.042	0.054	0.045	0.050	0.076
	std	0.01	0.01	0.01	0.01	0.01	0.01	0.01	0.01	0.01
GR	mean	-0.040	-0.030	-0.043	-0.065	-0.042	-0.036	-0.058	-0.025	-0.035
	std	0.02	0.01	0.01	0.02	0.01	0.02	0.02	0.01	0.02

650



655 Figure 1. Maps of the Arctic (a) and Antarctic (b) showing the regions referred to and the
 locations where atmospheric forcing data and brightness temperatures were extracted. The
 grey area indicates the average sea-ice extent for 1 June (Arctic) and 1 December (Antarctic),
 2000-2009. Regions indicated are: Arctic: NP (North Pole), FS (Fram Strait), BR (Barents
 Sea), KS (Kara Sea), LS (Laptev Sea), ES (East Siberian Sea), BF (Beaufort Sea), CA
 660 (Canadian Arctic), Antarctic: WW (Western Weddell Sea), WS (Weddell Sea), IO (Indian
 Ocean), WP (Western Pacific), RS (Ross Sea), BA (Bellingshausen-Amundsen Sea).

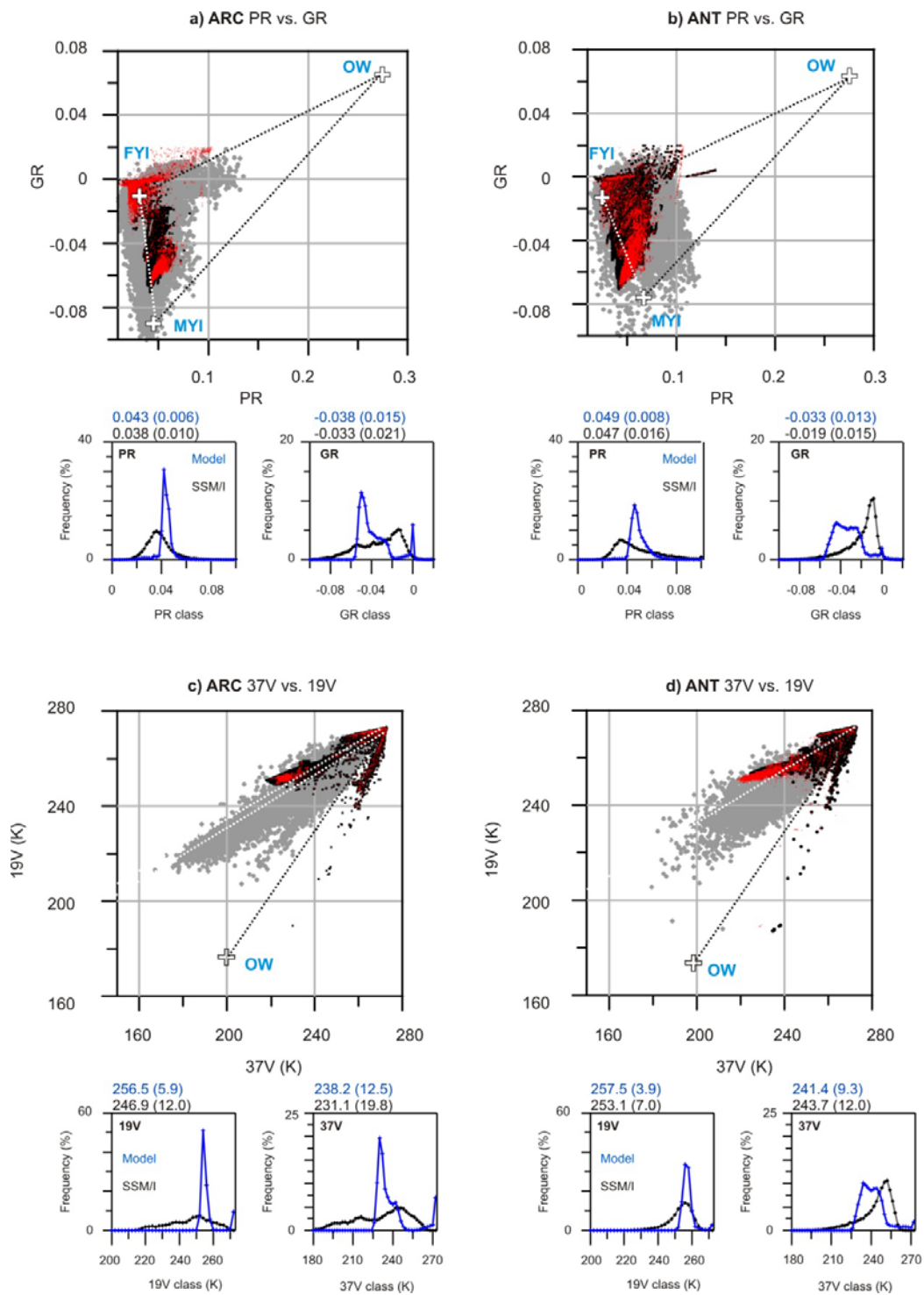
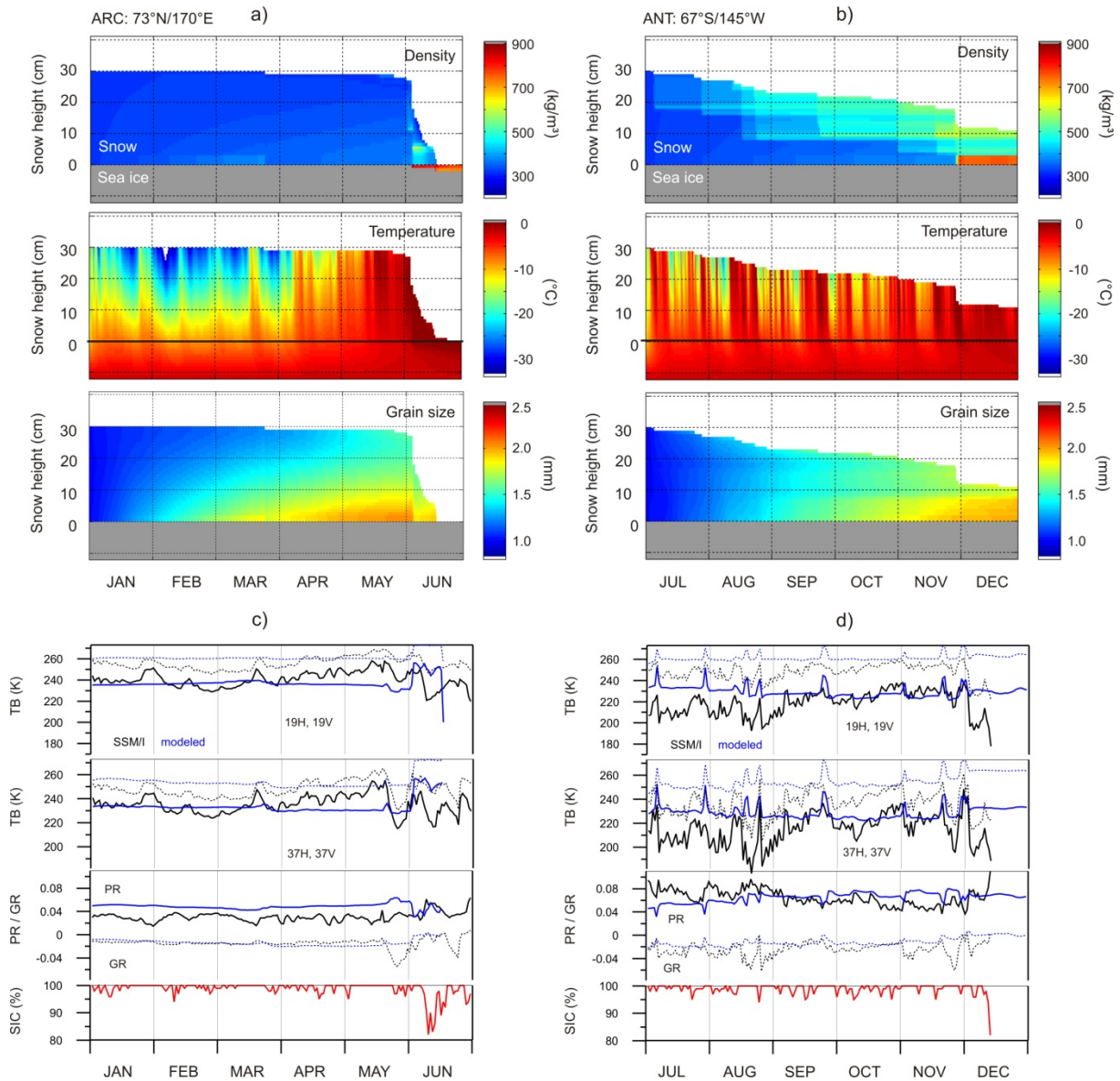


Figure 2. Simulated brightness temperatures polarization and gradient ratios (PR, GR, black) for the Arctic (a, January to June) and Antarctic (b, July to December) and brightness temperatures at 37V/19V for the Arctic (c) and Antarctic (d), 4 times daily data, 2000-2009. Red dots indicate last month of simulations. Daily values of observed satellite Tb for area with sea-ice concentrations above 90% are shown by grey dots for comparison. Tie points for open water (OW) and (a, b only) first-year ice (FYI) as well as multi-year ice (MYI) are

670 indicated by crosses. 100% sea ice concentration lines are shown by white dotted lines, while different lines in c) show lines for summer and winter, respectively. a) – d) with frequency distributions of modelled (blue) and observed data (black, values extracted where sea-ice concentrations exceeds 90%). Mean and standard deviations are indicated by numbers.



675

Figure 3. Snow pack evolution from SNTHTERM: Density, Temperature and Grain size for the Arctic (a, Jan-Jun 2008, 70°N/170°W) and Antarctic (b, Jul-Dec 2008, 70°S/85°W), both together with coincident sea-ice concentration. Associated simulated (blue) and modelled (black) 19H and 37V brightness temperatures for the same positions in the Arctic (c) and Antarctic (d).

680

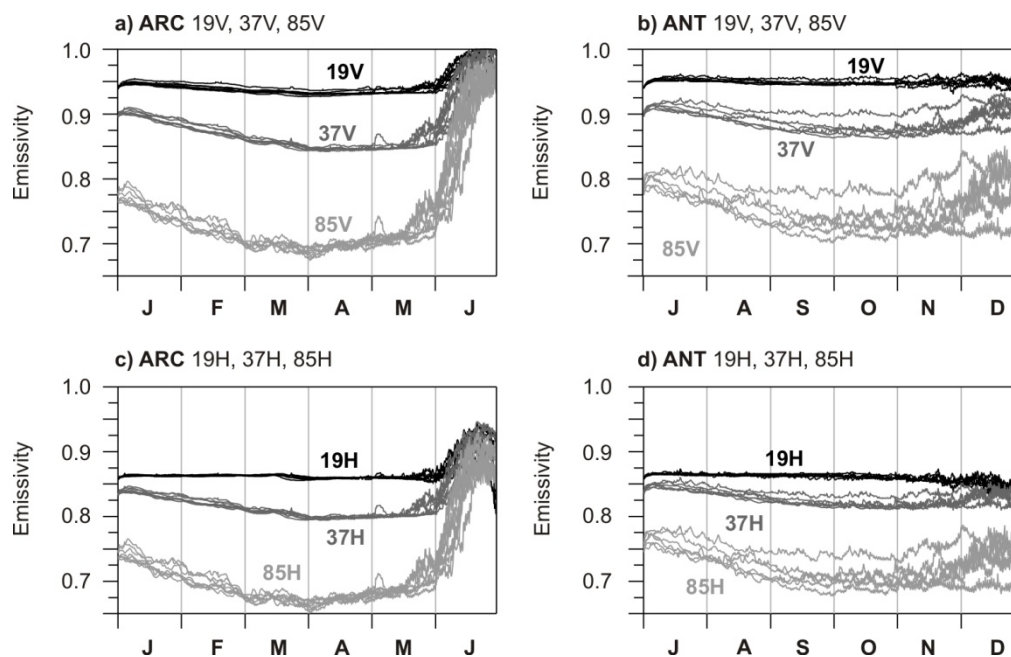
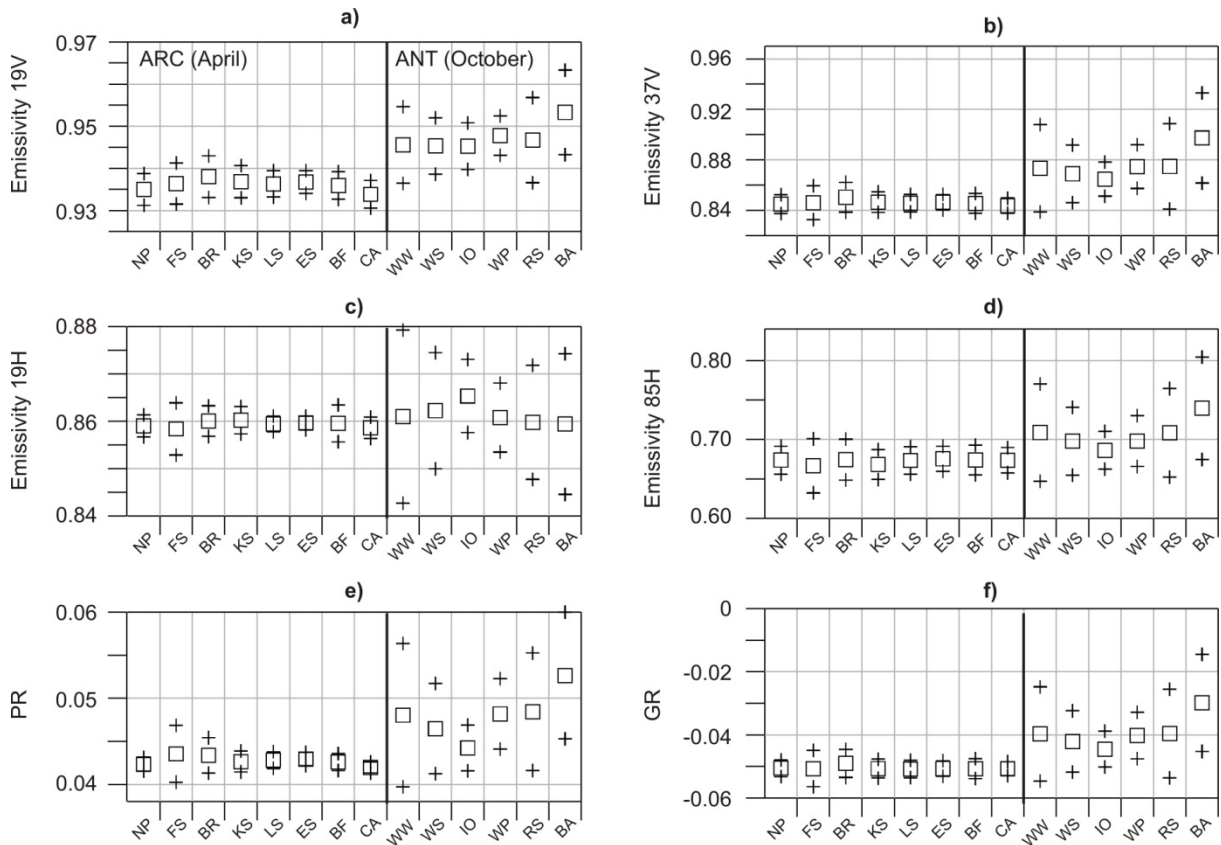
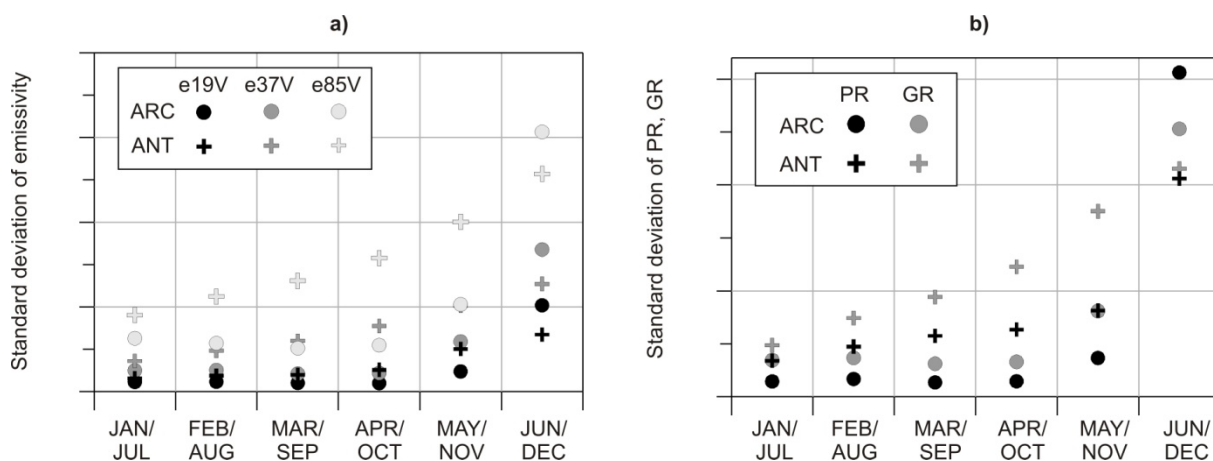


Figure 4. The seasonal evolution of simulated 19 GHz, 37 GHz and 85 GHz emissivities at vertical (a,b) and horizontal (c,d) polarizations for Arctic regions (a, c, January to June) and Antarctic regions (b, d, July to December). Data are averaged for the period from 2000-2009.



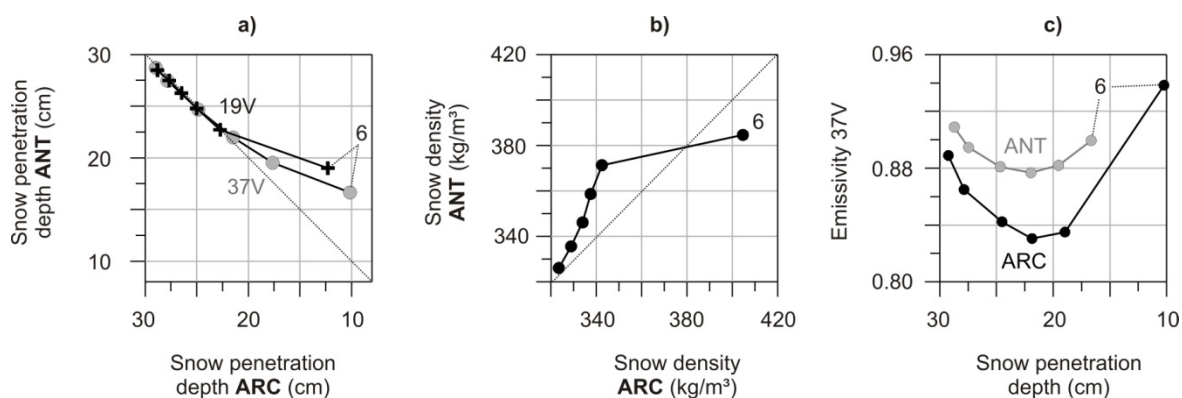
690 Figure 5. Mean (squares) and standard deviation (crosses) of simulated emissivity values indicating the daily, spatial and interannual variability in the 4th month of simulation (ARC: April, ANT: October) for emissivities at a) 19V, b) 37V, c) 19H, d) 85H as well as e) Polarization Ratio and f) Gradient Ratio.



695

Figure 6: Seasonal evolution of simulated, monthly standard deviations of a) emissivities at 19 (black), 37 (gray) and 85 GHz (white), each at vertical polarization, for the Arctic (circles) and Antarctic (crosses), b) PR (black symbols) and GR (grey symbols) for the Arctic (circles) and Antarctic (crosses). Monthly values, characterizing the diurnal, regional and inter-annual variabilities, January to June (Arctic) and July to December, Antarctic, 2000-2009.

700



705

Figure 7: a) Monthly average snow penetration depth, Arctic vs. Antarctic for 19V (black) and 37V (grey), b) Monthly average snow density, Arctic vs. Antarctic, c) Monthly average 37V emissivity in relation to snow penetration depth. Each for the months of January to June (Arctic) and July to December (Antarctic; last months are highlighted by number "6" to indicate the direction of the seasonal evolution), averaged for all regions, 2000-2009.

Table S1a. Monthly standard deviation of emissivity (%) per region, month, frequency and polarization for 19 GHz and 37 GHz.

	ARC									ANT						
	NP	FS	BR	KS	LS	ES	BF	CA		WW	WS	IO	WP	RS	BA	
19V	JAN	0.45	0.51	0.52	0.46	0.37	0.35	0.38	0.37	JUL	0.45	0.46	0.37	0.45	0.52	0.48
	FEB	0.36	0.47	0.51	0.50	0.44	0.36	0.39	0.33	AUG	0.53	0.45	0.34	0.43	0.94	0.59
	MAR	0.39	0.41	0.49	0.45	0.30	0.29	0.36	0.36	SEP	0.56	0.46	0.40	0.49	0.91	0.72
	APR	0.38	0.49	0.49	0.38	0.31	0.27	0.33	0.33	OCT	0.91	0.67	0.55	0.47	1.01	1.00
	MAY	0.24	0.73	0.40	0.33	0.28	0.68	0.56	0.18	NOV	2.73	0.79	2.59	0.60	1.22	1.45
	JUN	1.83	2.50	1.76	1.68	2.80	6.50	5.64	1.56	DEC	3.42	1.74	1.60	1.18	1.81	3.29
19H	ARC									ANT						
	NP	FS	BR	KS	LS	ES	BF	CA		WW	WS	IO	WP	RS	BA	
	JAN	0.25	0.40	0.25	0.23	0.22	0.22	0.24	0.22	JUL	0.54	0.46	0.18	0.79	0.81	1.35
	FEB	0.22	0.34	0.26	0.20	0.23	0.21	0.23	0.20	AUG	0.58	0.26	0.15	0.84	1.60	1.12
	MAR	0.40	0.36	0.41	0.32	0.32	0.33	0.37	0.42	SEP	0.97	0.35	0.32	0.74	1.12	1.42
	APR	0.23	0.55	0.32	0.29	0.17	0.14	0.39	0.23	OCT	1.83	1.23	0.77	0.73	1.20	1.48
MAY	0.31	1.82	0.99	0.64	0.57	1.74	1.59	0.39	NOV	3.36	1.84	3.37	1.32	2.01	2.32	
JUN	4.81	6.16	4.99	4.81	6.67	10.50	9.71	4.61	DEC	7.33	4.36	2.70	3.23	4.27	6.48	
37V	ARC									ANT						
	NP	FS	BR	KS	LS	ES	BF	CA		WW	WS	IO	WP	RS	BA	
	JAN	1.00	1.17	1.21	0.98	0.86	0.82	0.84	0.88	JUL	1.05	1.06	0.81	1.13	1.28	1.34
	FEB	0.82	1.11	1.23	1.17	0.94	0.86	0.86	0.78	AUG	1.59	1.26	1.01	1.56	2.21	1.98
	MAR	0.84	0.93	1.12	0.97	0.69	0.64	0.77	0.76	SEP	1.88	1.33	1.17	1.71	2.88	2.64
	APR	0.74	1.34	1.18	0.81	0.70	0.61	0.79	0.60	OCT	3.56	2.28	1.35	1.72	3.38	3.56
MAY	0.72	2.48	1.46	1.06	1.02	2.43	2.14	0.67	NOV	4.26	3.07	2.41	2.16	4.20	4.33	
JUN	6.07	6.22	5.98	5.61	6.07	6.35	6.29	6.07	DEC	5.67	4.77	3.06	3.45	5.09	4.51	
37H	ARC									ANT						
	NP	FS	BR	KS	LS	ES	BF	CA		WW	WS	IO	WP	RS	BA	
	JAN	0.82	0.96	0.98	0.82	0.70	0.66	0.69	0.71	JUL	0.98	0.92	0.66	1.14	1.22	1.70
	FEB	0.66	0.91	0.97	0.95	0.76	0.69	0.71	0.63	AUG	1.11	0.94	0.79	1.32	2.10	1.58
	MAR	0.79	0.76	0.99	0.86	0.63	0.61	0.72	0.73	SEP	1.49	0.97	0.94	1.33	1.99	2.06
	APR	0.66	1.18	0.99	0.73	0.62	0.54	0.81	0.55	OCT	2.91	2.10	1.19	1.38	2.34	2.49
MAY	0.68	2.85	1.65	1.16	1.01	2.88	2.61	0.76	NOV	3.78	2.84	2.62	1.99	3.38	3.18	
JUN	6.83	6.77	6.73	6.91	7.33	8.87	8.42	6.82	DEC	6.1	4.95	2.93	3.89	4.87	5.20	

715

720

Table S1b. Monthly standard deviation of emissivity (%) per region, month, frequency and polarization for 85 GHz.

		ARC								ANT						
		NP	FS	BR	KS	LS	ES	BF	CA		WW	WS	IO	WP	RS	BA
85V	JAN	2.59	3.22	3.23	2.64	2.17	2.03	2.11	2.14	JUL	2.89	2.88	2.33	3.19	3.49	3.62
	FEB	1.87	2.81	2.76	2.70	2.10	1.95	2.03	1.75	AUG	3.83	3.01	2.50	3.82	5.22	5.09
	MAR	2.07	2.58	2.60	2.33	1.81	1.68	1.83	1.74	SEP	4.40	2.95	2.63	3.89	6.05	6.53
	APR	1.86	3.80	2.79	1.99	1.83	1.69	1.99	1.69	OCT	7.06	4.59	2.61	3.69	6.91	8.00
	MAY	1.62	5.27	3.04	2.28	2.36	4.80	4.47	1.70	NOV	8.20	6.23	4.67	4.38	8.45	9.73
	JUN	12.34	12.33	12.65	12.76	12.23	11.67	11.77	12.10	DEC	11.82	9.61	6.46	7.51	9.91	11.21
		ARC								ANT						
		NP	FS	BR	KS	LS	ES	BF	CA		WW	WS	IO	WP	RS	BA
85H	JAN	2.44	2.98	3.04	2.49	2.04	1.91	1.99	2.01	JUL	2.70	2.66	2.19	3.03	3.17	3.60
	FEB	1.76	2.60	2.59	2.56	1.98	1.84	1.92	1.66	AUG	3.36	2.77	2.35	3.47	4.84	4.35
	MAR	1.96	2.35	2.45	2.21	1.71	1.59	1.73	1.65	SEP	3.87	2.69	2.44	3.43	4.98	5.46
	APR	1.77	3.42	2.60	1.88	1.74	1.60	1.87	1.60	OCT	6.15	4.29	2.39	3.21	5.61	6.48
	MAY	1.50	5.03	2.84	2.22	2.14	4.62	4.27	1.61	NOV	7.20	5.53	4.49	3.85	7.03	7.59
	JUN	11.10	10.71	11.23	11.45	10.85	10.50	10.48	10.86	DEC	9.03	8.33	5.63	6.62	8.11	8.17

725