

**An inverse method
to estimate basal
topography**

W. J. J. van Pelt et al.

An iterative inverse method to estimate basal topography and initialize ice flow models

W. J. J. van Pelt¹, J. Oerlemans¹, C. H. Reijmer¹, R. Pettersson², V. A. Pohjola²,
E. Isaksson³, and D. Divine³

¹Institute for Marine and Atmospheric research, Utrecht University, Utrecht, the Netherlands

²Department of Earth Sciences, Uppsala University, Uppsala, Sweden

³Norwegian Polar Institute, Tromsø, Norway

Received: 13 February 2013 – Accepted: 22 February 2013 – Published: 5 March 2013

Correspondence to: W. J. J. van Pelt (w.j.j.vanpelt@uu.nl)

Published by Copernicus Publications on behalf of the European Geosciences Union.

Title Page

Abstract

Introduction

Conclusions

References

Tables

Figures

⏪

⏩

◀

▶

Back

Close

Full Screen / Esc

Printer-friendly Version

Interactive Discussion



Abstract

We present and evaluate an inverse approach to reconstruct two-dimensional fields of bedrock topography and simultaneously initialize an ice flow model. The inverse method involves an iterative procedure in which an ice dynamical model (PISM) is run multiple times over a prescribed period, while being forced with space and time-dependent climate input. After every iteration bed heights are adjusted using information of the remaining misfit between observed and modeled surface topography. The inverse method is first applied in synthetic experiments with a constant climate forcing to verify convergence and robustness of the approach. In a next step, the inverse approach is applied to Nordenskiöldbreen, Svalbard, forced with height- and time-dependent climate input since 1300 AD. An L-curve stopping criterion is used to prevent overfitting. Validation against radar data reveals a high correlation (up to $R = 0.89$) between modeled and observed thicknesses. Remaining uncertainties can mainly be ascribed to inaccurate model physics, in particular uncertainty in the description of sliding. Results demonstrate the applicability of this inverse method to reconstruct the ice thickness distribution of glaciers and ice caps. In addition to reconstructing bedrock topography, the method provides a direct tool to initialize ice flow models for forecasting experiments. Application of the method is not constrained to a single model or glacier, indicating the potential to use the approach to compute the detailed thickness distribution of a single glacier, as well as the volume contained in a set of glaciers and ice caps.

1 Introduction

The inaccessibility of the bed underneath glaciers and ice caps limits observational constraints on basal conditions. Surface data are much more abundant and, when linked to basal parameters using a forward model, can be used in an inverse manner to better constrain basal boundary conditions (e.g. MacAyeal, 1992; Joughin et al., 2004;

TCD

7, 873–920, 2013

An inverse method to estimate basal topography

W. J. J. van Pelt et al.

Title Page

Abstract

Introduction

Conclusions

References

Tables

Figures

◀

▶

◀

▶

Back

Close

Full Screen / Esc

Printer-friendly Version

Interactive Discussion



An inverse method to estimate basal topography

W. J. J. van Pelt et al.

Title Page

Abstract

Introduction

Conclusions

References

Tables

Figures

◀

▶

◀

▶

Back

Close

Full Screen / Esc

Printer-friendly Version

Interactive Discussion



Raymond Pralong and Gudmundsson, 2011). In this study, we focus on reconstructing basal topography. Accurate estimates of the basal topography and ice thickness distribution are needed mainly for two reasons. Firstly, estimates of the ice thickness distribution are required to determine the total ice volume stored in a glacier or ice cap, which is needed to assess the potential contribution to sea-level rise. Secondly, accurate simulation of the future evolution of glaciers and ice caps in a changing climate depends strongly on the initial ice thickness distribution. Proper initialization of ice flow models involves an ice surface geometry and thermodynamic state consistent with the history of the surface forcing at the start of a prognostic experiment. The relevance of accurate initialization has been stressed by, e.g. Oerlemans et al. (1998), Huybrechts and de Wolde (1999) and Huss et al. (2008).

Measuring distributed fields of basal topography using Ground Penetrating Radar (GPR) is a laborious and expensive task, hence bed height data sets generally only partially cover the region of interest. This has motivated the development of techniques to indirectly estimate the ice thickness distribution. A first attempt was made by Nye (1951), who assumed a perfectly plastic ice rheology in order to compute the ice thickness from the surface slope and a constant yield stress. This method has been used to recover glacier bed topographies by, e.g. Haeberli and Hölzle (1995), Oerlemans (1997) and Paul and Svoboda (2010). Recently, Li et al. (2012) extended this method accounting for variable width of the glacier, thereby incorporating the effect of side drag on the stress state. Alternatively, several studies used the mass continuity equation to derive the thickness distribution. Farinotti et al. (2009) applied a mass conservation approach to compute the thickness distribution from surface height data. Other mass continuity approaches rely on velocity data to compute bed heights (e.g. Morlighem et al., 2011; McNabb et al., 2012). Inverse control methods have been applied to Antarctic ice streams to simultaneously recover basal topography and slipperiness, requiring distributed fields of surface topography and velocities (Thorsteinsson et al., 2003; Raymond and Gudmundsson, 2009; Raymond Pralong and Gudmundsson, 2011). In

Clarke et al. (2009), an alternative method is proposed and discussed, which uses neural networks to obtain thickness estimates from surface height data.

In this study, an iterative inverse method is presented to reconstruct distributed fields of basal topography, given a set of surface height data, an ice flow model and a time-dependent surface climate forcing. The approach does not require surface velocity input and aims to minimize the discrepancy between modeled and observed surface heights at the end of time-dependent model runs. In this way, it additionally provides an efficient way to initialize ice flow models for forecasting experiments. In the spirit of a recent studies by Pollard and DeConto (2012) and Michel et al. (2013), a simple regularization method is employed, in which the surface height misfit is directly used to iteratively update the basal topography. In this manner, complex evaluation of cost-function gradients in order to define a search direction is avoided. The main aim of this work is to demonstrate the functionality of the inverse method and to show the applicability in a real glacier setting. First, we present the regularization method and discuss relevant features of the forward model (Sect. 2). Then the approach is applied in a set of synthetic steady-state experiments to evaluate convergence and robustness of the inverse method (Sect. 3). In Sect. 4 the inverse approach is applied to the glacier geometry of Nordenskiöldbreen, Svalbard, with the added complexity of a non-steady final geometry and dealing with data and modeling errors. Reconstructed beds are validated against radar observations and the significance of errors is discussed.

2 Model and method

2.1 Model description

The Parallel Ice Sheet Model (PISM) is used as a forward model in the iterative procedure in which the basal topography is adjusted after every iteration. Here we will address relevant features of the model. For a more elaborate description of the model, the reader is referred to Bueler and Brown (2009) and Winkelmann et al. (2011).

An inverse method to estimate basal topography

W. J. J. van Pelt et al.

Title Page

Abstract

Introduction

Conclusions

References

Tables

Figures



Back

Close

Full Screen / Esc

Printer-friendly Version

Interactive Discussion



An inverse method to estimate basal topography

W. J. J. van Pelt et al.

Title Page

Abstract

Introduction

Conclusions

References

Tables

Figures

◀

▶

◀

▶

Back

Close

Full Screen / Esc

Printer-friendly Version

Interactive Discussion



Forced with fields of surface mass balance and near-surface temperature, experiments are performed with PISM to simulate the spatio-temporal evolution of the surface topography. Ice flow in PISM is a combination of ice movement by internal deformation, described by the Shallow Ice Approximation (SIA) (Morland and Johnson, 1980; Hutter, 1983), and basal sliding, described by the Shallow Shelf Approximation (SSA) (MacAyeal, 1989; Weis et al., 1999). Weighting and averaging of the two velocity components results in a smooth transition from shearing to sliding flow and hence provides a solution to the flux-matching problem at the transition from sliding to non-sliding ice (Schoof, 2006; Bueler and Brown, 2009). Effectively, the SSA is used as a sliding law. As a direct consequence of its “shallowness”, the model is significantly more efficient than higher-order or full-Stokes alternatives in terms of computational costs.

The evolution of the internal thermodynamic structure of the ice is modeled using an energy conservation scheme in which an “enthalpy-gradient approach” is adopted to compute vertical profiles of water content and temperature (Aschwanden and Blatter, 2009; Aschwanden et al., 2012). Enthalpy advection, diffusion and production by strain heating are modeled in a consistent manner in both cold ice (temperature below pressure-melting point) and temperate ice (temperature at pressure-melting point). Additionally, a bedrock model simulates the diffusive enthalpy transport in the upper hundreds of meters of bedrock underlying the ice. A fixed geothermal heat flux is prescribed at the lower boundary of the bedrock model. When ice slides over the bed, frictional heating will contribute to the heat budget at the ice/bed interface. In case the bed is at pressure-melting point, excess energy will induce basal melting and local water production. Basal water is stored locally and may refreeze when the basal temperature drops below pressure-melting point. In this simplified water model we do not account for exchange of water between grid cells. An approximation of the local conservation of energy determines the spatial distribution of temperate and cold ice and the spatial distribution of basal water production. A more realistic water model, incorporating a Darcian transport scheme, surface to bed transport and a transient transmissivity of the system, would be needed to realistically simulate water transport and seasonal

variability in water layer thickness and pressures, which is beyond the scope of this work.

The connection between water layer thickness, water pressure and the basal shear stress follows the description of Bueler and Brown (2009) and Van Pelt and Oerlemans (2012). A pseudo-plastic formulation for the basal shear stress τ_b as a function of the basal sliding velocity u_b and the yield stress τ_c is used ($\tau_b \sim \tau_c u_b^q$). A value of the pseudo-plasticity exponent q of 0.4 is used here, which is equivalent to a Weertman-type sliding law exponent of 2.5. The yield stress τ_c depends on the material till strength ϕ and water pressure p_w according to Clarke (2005):

$$\tau_c = \tan(\phi) (\rho g H - p_w) , \quad (1)$$

where ρ is the ice density (900 kg m^{-3}), g is the gravitational acceleration (9.81 m s^{-2}) and H the ice thickness. Given the simplicity of the determination of the basal shear stress, which is inevitable given our current knowledge of the basal conditions, we accept that a major source of error in the reconstructed basal topography stems from uncertainty in modeling the basal resistance. In Sect. 4 reconstructed beds will be validated against independent ground-penetrating radar data, which enables us to quantify the accuracy of the reconstruction and assess the significance of modeling errors.

2.2 Correction method

Our main aim is to develop, test and apply an inverse approach in which bedrock heights are iteratively adjusted in such a manner that the misfit of modeled and observed surface topography is minimized. Here we discuss the regularization technique used to stabilize the inverse procedure. In contrast to many previous inverse approaches in glaciology, often aiming to minimize the misfit in surface velocities to reconstruct basal shearing conditions (e.g. MacAyeal, 1992; Joughin et al., 2004), the correction method used here does not rely on evaluation of cost function gradients to update model parameters. Pollard and DeConto (2012) recently presented a correction method in which the local surface height misfit is directly used to iteratively

An inverse method to estimate basal topography

W. J. J. van Pelt et al.

Title Page

Abstract

Introduction

Conclusions

References

Tables

Figures



Back

Close

Full Screen / Esc

Printer-friendly Version

Interactive Discussion



update basal slipperiness. In a similar fashion, we directly use the surface height misfit to iteratively adjust bed heights. Forced at the surface with prescribed mass balance and near-surface temperature input, the ice flow model (PISM) is iteratively run over a specified period of time. At the end of every model iteration, local deviations between modeled surface heights h_{mod} and reference heights h_{ref} are evaluated and directly applied as a local bed correction Δb :

$$\Delta b = -K (h_{\text{mod}} - h_{\text{ref}}) , \quad (2)$$

where K is a constant, referred to as the relaxation parameter. The magnitude of the bed correction in response to a surface discrepancy hence scales linearly with the relaxation factor K . A similar correction method has previously been applied in a flow-line context in Oerlemans (2001), Leclercq et al. (2012) and Michel et al. (2013) and is based on the intuitive principle that a higher bedrock elevation leads to an overall higher surface elevation. Perturbations of the bed height lead to a non-local surface expression with a transfer amplitude and phase-shift depending on multiple factors including slip ratio and dimensions of the basal perturbation (Gudmundsson, 2003; Raymond and Gudmundsson, 2005). When recovering a single bump in an otherwise flat bed, the surface misfit and hence the bedrock correction will initially be out-of-phase with the actual bump position (when starting from a fully flat bed). We will illustrate in Sect. 3.1 that the interaction of bed adjustments and the surface misfit causes the recovered bump to gradually grow and move into the right position.

3 Synthetic experiments

Experiments with a synthetic ice sheet give insight in the functionality of the bedrock reconstruction method and the sensitivity of convergence to the chosen setup of the experiments.

Prior to the iterative procedure to recover the basal topography, reference bedrock and surface height profiles are required. Reference bed profiles are manually designed

An inverse method to estimate basal topography

W. J. J. van Pelt et al.

Title Page

Abstract

Introduction

Conclusions

References

Tables

Figures



Back

Close

Full Screen / Esc

Printer-friendly Version

Interactive Discussion



An inverse method to estimate basal topography

W. J. J. van Pelt et al.

Title Page

Abstract

Introduction

Conclusions

References

Tables

Figures

◀

▶

◀

▶

Back

Close

Full Screen / Esc

Printer-friendly Version

Interactive Discussion



and serve as a lower boundary in an initial model run. In the initial run and the iterative model runs, a constant-in-time mass balance and surface temperature forcing is used. Starting without ice, model runs cover a period of 20 kyrs, which is sufficient to reach a steady-state geometry. The surface topography at the end of the initial run is used as a reference surface (h_{ref} in Eq. 2) in the iterative bedrock recovery method. After the initial run, the designed reference basal topography is “forgotten” and the iterative recovery starts from a random initial bed (a flat bed in the synthetic experiments) and attempts to gradually recover the reference basal topography. Both the prescribed mass balance and temperature at the snow/ice interface are constant in time and vary linearly with distance to the domain center (Fig. 1). Resulting steady-state geometries are approximately axisymmetric and the velocity field is characterized by an internal deformation dominated center region and more significant sliding velocities towards the ice margin. In the standard setup the relaxation factor K is set to 1, which is small enough to avoid instabilities due to overcompensation of the bed, and large enough to speed-up convergence of the approach.

Experiments are conducted on a 50×50 horizontal grid with a 15 km grid spacing. The vertical grid in the ice contains 100 unevenly distributed layers (more concentrated near the bed). The vertical grid in the bedrock consists of 10 layers extending down to 200 m below the ice-bedrock interface.

The idealized framework of the synthetic experiments allows us to study convergence of the inverse approach under simplified conditions. Additional complexities related to the presence of noise in the surface height data, height-feedbacks of the climate forcing and non-steadiness of the final surface profile, which are relevant in an application with real data, are addressed in Sect. 4. The experiments in this section are divided into two parts, discussing recovery of a bed containing a single bump (“one-bump” experiment, Sect. 3.1) and a distributed field of bumps (“bump-field” experiment, Sect. 3.2).

3.1 “One-bump” experiment

In a first experiment the iterative procedure is used to recover a single bump in an otherwise flat bed. The initialization run produces reference surface height and bedrock height profiles shown in Fig. 2a and b, respectively. In the iterative bed recovery procedure, an arbitrary total of 40 iterations is performed of which snapshots of the recovered bed are shown in Fig. 2d. Corresponding snapshots of surface misfit, defined as the modeled minus the reference bed height, are plotted in Fig. 2c. Surface velocities are dominated by deformation in the interior (up to 13 ma^{-1}) and sliding near the ice margin (up to 48 ma^{-1}).

With the increasing number of iterations the bump in the bed is gradually recovered (Fig. 2d) and the surface misfit diminishes (Fig. 2c). The presence of the bedrock bump in the reference bed raises the reference surface upstream of the bump position (and slightly lowers the surface downstream of the bump). At the start of the iterative procedure with a flat bed, the surface misfit is therefore negative upstream of the reference bump position, thereby inducing a positive bed correction. In subsequent iterations the gradually growing bump upstream of the reference bump position affects the surface misfit such that the negative misfit (positive bed correction) gradually shifts in the downstream direction (Fig. 2c). Consequently the recovered bump slowly moves towards the reference position, while its amplitude increases (Fig. 2d). It can be shown that for a phase-shift between the reference bed bump and the corresponding surface bump smaller than 180° , the recovered bump position will converge to the reference position. Raymond and Gudmundsson (2005) and Gudmundsson (2003) illustrate that phase-shifts do not become larger than 90° for a wide range of parameter values. A cross-sectional view of the bed in Fig. 2e further illustrates the recovered bump movement and growth with the number of iterations. The above experiment demonstrates that despite the non-local surface expression related to a local bed height perturbation, the local recovered bed approaches reference values when applying sufficient iterative corrections. The non-local surface expression is apparent for the entire grid (Fig. 2c) and

TCD

7, 873–920, 2013

An inverse method to estimate basal topography

W. J. J. van Pelt et al.

Title Page

Abstract

Introduction

Conclusions

References

Tables

Figures

◀

▶

◀

▶

Back

Close

Full Screen / Esc

Printer-friendly Version

Interactive Discussion



reduces with the number of iterations. Note that the bed perturbation of up to 150 m results in a surface perturbation of only up to 10 m, which is indicative of the low transfer amplitude of bed height variability to the surface. A larger transfer amplitude would enhance the growth rate of the recovered bump and hence speed-up convergence.

5 Among other factors, the low mean surface slope (0.3°) in this example limits the bed to surface transfer amplitude (Raymond and Gudmundsson, 2005).

3.2 “Bump-field” experiment

The previous experiment demonstrates convergence of the bedrock reconstruction method when recovering a single bump. Next, we apply the iterative method to a distributed field of bumps and additionally verify the robustness of the approach when changing: (1) the initial bed, (2) the relaxation factor K , (3) the mass turnover and (4) the bump dimensions.

Starting with a flat bed underneath the ice and the reference surface in Fig. 3a the iterative method attempts to recover the bed in Fig. 3b. Snapshots of the bed during the iterative procedure in Fig. 3c indicate gradual reduction of the misfit of the reconstructed bed w.r.t. the reference bed. A cross-sectional profile of the bed in Fig. 3d illustrates convergence with the number of iterations and shows that after 40 iterations errors remain largest near the center of the ice sheet. Raymond and Gudmundsson (2005) showed that the bed to surface transfer amplitude after a bed height perturbation is proportional to the surface slope and the slip ratio, i.e. the ratio of sliding vs. shearing velocity. In this experiment, enhanced sliding velocities towards the margin and low slopes in the interior lead to an increasing transfer amplitude towards the margin. A higher transfer amplitude implies a stronger surface response to bed height deviations and consequently larger corrections of the bed. From this, lower bed height convergence rates towards the ice sheet center in Fig. 3c and d can be understood.

Figure 4 shows the root-mean-square surface misfit versus the number of iterations for multiple sensitivity experiments. The magnitude of the bed correction scales linearly with the relaxation factor K . A low value for K implies slower convergence of the

An inverse method to estimate basal topography

W. J. J. van Pelt et al.

Title Page

Abstract

Introduction

Conclusions

References

Tables

Figures



Back

Close

Full Screen / Esc

Printer-friendly Version

Interactive Discussion



bed. On the other hand, setting K too high might lead to over-correction of the bed. That is, when the surface height is very sensitive to changes of the bed height, the associated large bed corrections might lead to a surface misfit (of opposite sign) larger than its value after the previous iteration, which is a sign of over-compensation of the bed. Consequently, an optimum value for K can be selected, which is small enough to achieve stable convergence and large enough to increase the rate of convergence. Figure 4 clearly demonstrates the increased convergence for large K .

The sensitivity of the approach to a different initial bed profile at the start of the first iteration is investigated by performing an additional run in which the initial bed is set to the reference surface height. Figure 4 illustrates that, despite a much larger initial bed misfit, the misfit after 40 iterations is nearly identical. Final beds after 40 iterations are similar, indicating that the reconstructed bed is not very sensitive to the chosen initial topography after many iterations.

We further investigate the applicability of the method when applying a different mass balance–altitude gradient, implying significant changes in ice dynamics and surface geometry. Figure 4 illustrates that convergence is apparent for both a positively (4 times larger) and negatively (4 times smaller) perturbed balance gradient. A larger balance gradient implies larger ice fluxes and a thicker ice mass with steeper slopes near the margin. Steep slopes in combination with a high slip ratio near the margin result in a high bed to surface transfer amplitude. The wavy pattern of the surface misfit for the large balance gradient can be ascribed to overcorrection of the bed near the margin. Setting K to a smaller value would reduce this effect.

In order to study the sensitivity of convergence for varying bump dimensions the inverse approach is applied to recover a bed containing a mixture of two bump sizes (Fig. 5b). Snapshots of the bed in Fig. 5c and the bed height misfit series in Fig. 5d indicate convergence and illustrate that with the number of iterations large-scale features are recovered more quickly than smaller-scale features. The recovery of the large-scale bumps leads to a rapid drop in the bed misfit until around 15 iterations. The slower recovery of the small-scale bumps continues until the end of the experiment

An inverse method to estimate basal topography

W. J. J. van Pelt et al.

[Title Page](#)[Abstract](#)[Introduction](#)[Conclusions](#)[References](#)[Tables](#)[Figures](#)[Back](#)[Close](#)[Full Screen / Esc](#)[Printer-friendly Version](#)[Interactive Discussion](#)

Compared to the idealized examples in the previous section application to Nordenskiöldbreen poses some additional challenges. First of all, as mentioned before, the presence of data and modelling errors suggest the need for termination of the iterative procedure before fitting the modelled surface to unrealistic features. Hence, a principled stopping criterion is used to minimize the significance of overfitting. Secondly, in contrast to the synthetic experiments, the glacier is not in steady state at the end of an iteration. A time-dependent surface climate forcing since 1300 AD is prescribed and the effect of surface height changes on the mass balance and surface temperature is taken into account.

4.1 Nordenskiöldbreen

Nordenskiöldbreen is a tidewater glacier in central Svalbard, connected to a large ice plateau, Lomonosovfonna. After recent retreat the ice front has partly retreated on land and the significance of frontal calving has declined (Plassen et al., 2004). GPS observations of ice movement along the flow line since 2006 reveal annual mean surface velocities up to 60 m yr^{-1} (Den Ouden et al., 2010). Nordenskiöldbreen has a polythermal thermodynamic structure with cold annual mean near-surface temperatures in the ablation area and a nearly-temperate snow pack in the accumulation zone as a result of significant melt water refreezing Van Pelt et al. (2012). This type of structure is common for Svalbard glaciers (Pettersson, 2004). A 40 m resolution DEM of the glacier and its surroundings, obtained in 2007 as part of the SPIRIT project: *SPOT 5 stereoscopic survey of Polar Ice: Reference Images and Topographies* (Korona et al., 2009), is shown in Fig. 6a. Some post-processing has been done to remove inconsistent data. The black line in Fig. 6a marks the extent of the selected grid of Nordenskiöldbreen, where the ice is allowed to freely evolve in the model runs. The selected grid is chosen to include two side-flows flowing between Terrierfjellet, Ferrierfjellet and Minkinfjellet, merging with the main flow further downstream. GPR bed height data (Fig. 6b), gathered during a field campaign in 2010, reveal bed heights below sea level upstream of the current frontal position. The bed data are used to validate the reconstructed bed.

An inverse method to estimate basal topography

W. J. J. van Pelt et al.

Title Page

Abstract

Introduction

Conclusions

References

Tables

Figures



Back

Close

Full Screen / Esc

Printer-friendly Version

Interactive Discussion



4.2 Setup

Model iterations are performed on a grid with a 500 m resolution, containing a total of 3432 grid points. Every model iteration starts with an initialization run over the period 500–1300 AD, forced with constant-in-time, height-dependent climate input (Sect. 4.3) to initialize the ice geometry and its thermodynamics (approaching a steady-state in 1300). The prescribed surface climate during initialization corresponds to the mean climate for the period 1300–2007. Initialization is followed by a run over the period 1300–2007 with the model being forced with reconstructed time- and height-dependent climate input, as discussed in the next paragraph. The difference between modeled and observed surface heights in 2007, referred to as the surface misfit, is used to correct the bed after every iteration.

Outside the grid of Nordenskiöldbreen, the ice is allowed to evolve in a limited sense. A “force-to-thickness” mechanism is applied there, which involves mass balance adjustments to force the surface height to approach present-day values. The resulting slightly smoothed surface outside the grid avoids severe time-stepping restrictions related to steep surface gradients. The grid of Nordenskiöldbreen is selected along the present-day ice divide, implying negligible ice flow across the grid boundary. The limited ice thickness evolution at the ice divide and its fixed position increase uncertainty in the reconstructed bed near the ice divide. Moreover, low surface slopes and small ice fluxes limit the bed to surface transfer amplitude and hence bed heights cannot meaningfully be determined. Therefore, the bed is not corrected in the immediate vicinity of the ice divide, and bed heights are determined by nearest-neighbor interpolation. Additionally, some measures are taken to prevent inconsistent corrections near the margins. This includes: (1) interpolating the bed for grid points that are directly connected to ice-free grid cells, (2) interpolating the bed for ice-free grid cells which are ice-covered in the reference profile, (3) not adjusting the bed for grid cells which are ice-free in the reference profile and ice-covered in the model iteration.

TCD

7, 873–920, 2013

An inverse method to estimate basal topography

W. J. J. van Pelt et al.

Title Page

Abstract

Introduction

Conclusions

References

Tables

Figures

◀

▶

◀

▶

Back

Close

Full Screen / Esc

Printer-friendly Version

Interactive Discussion



An inverse method to estimate basal topography

W. J. J. van Pelt et al.

Title Page

Abstract

Introduction

Conclusions

References

Tables

Figures

◀

▶

◀

▶

Back

Close

Full Screen / Esc

Printer-friendly Version

Interactive Discussion



In these experiments, ice is set to calve of at the present-day position of the calving front and hence the glacier front is not allowed to move beyond its present-day position. This implies some uncertainty in ice flow near the glacier front, in particular further back in time. The current lack of proper physics in the model to deal with calving and movement of the grounded calving front obliged us to use this simplifying assumption.

A value for the relaxation factor K of 0.25 has been used in these experiments and leads to stable convergence of the inverse method. It is worth mentioning that climate feedbacks, like the mass balance–altitude feedback, enhance deviations of the surface height after a bedrock adjustment. This is one of the reasons to use a smaller K than in the synthetic experiments.

All experiments start the first iteration with an initial bed generated through interpolation between known bed heights from the GPR data set and from the DEM (ice-free regions). Note that the data cover only a very small part of the grid, leading to a relatively smooth interpolated initial bed. For the tributary glaciers a constant initial ice thickness has been assumed to derive basal topography. The sensitivity of the reconstruction to the initial bed is discussed in Sect. 4.4.1. Outside the Nordenskiöldbreen grid bed heights are fixed and determined by means of the perfect-plasticity assumption (Nye, 1951), assuming a constant applied stress equal to the mean determined from thickness and surface slope estimates at GPR bed data locations. Some interpolation is done in locations where surface slopes are small and the perfect plasticity assumption determines unrealistically large ice thicknesses.

As mentioned, modeling errors and surface data noise may lead to undesired corrections of the bed. A stopping criterion is needed to terminate the iterative procedure before the reconstructed bed gets too severely polluted by unphysical variability. Synthetic experiments have indicated that with the number of iterations the rate of improvement of the surface misfit declines as smaller scale-bed features are recovered. The relative significance of modeling errors, as well as surface height data errors, hence increases with the number of iterations. Habermann et al. (2012) indicated that for problems involving both data and modeling errors, a so-called “L-curve criterion” can be used to

An inverse method to estimate basal topography

W. J. J. van Pelt et al.

Title Page

Abstract

Introduction

Conclusions

References

Tables

Figures

◀

▶

◀

▶

Back

Close

Full Screen / Esc

Printer-friendly Version

Interactive Discussion



define a reasonable point of termination (Aster et al., 2005). The L-curve criterion is based on the principle that the iterative method should stop when further reduction of the surface misfit comes at the expense of (unrealistically) large adjustments of the bed. In order to define the point of termination, the residual norm, i.e. the square-root of the summed squared surface misfit, is plotted versus the model norm in a loglog-plot. A L2-model norm has been used here, which is equivalent to the square-root of summed squared deviations of the reconstructed bed height relative to the initial bed. A bending point in this graph represents the critical point beyond which overfitting is likely to occur and hence defines a reasonable point to stop the iterative method. Note that the available bed data are not used in this stopping principle and can hence be used as an independent source for validation of the reconstructed bed at the point of termination. In other inverse modeling studies reconstructing basal conditions underneath glaciers, iterative procedures are often terminated when the surface misfit falls below a certain predefined tolerance (“discrepancy principle”) (Maxwell et al., 2008; Arthern and Gudmundsson, 2010) or when the rate of change of the residual norm drops below a predefined threshold (“recent-improvement principle”) (Joughin et al., 2006; Sergienko et al., 2008). In problems involving both modeling and data errors, it is generally hard to define the tolerance required in the discrepancy principle. On the other hand, the recent-improvement criterion depends strongly on the predefined value of the threshold, for which constraints are lacking.

4.3 Climate forcing

In this paragraph, the strategy employed to obtain a time- and altitude-dependent surface forcing is described. Given a winter temperature reconstruction for Longyearbyen (Divine et al., 2011) and an annual accumulation record for Lomonosovfonna, a climate reconstruction for Nordenskiöldbreen back to 1300 AD has been made. The climate sensitivity of the mass balance and subsurface temperature, constituting the surface forcing, is computed with a coupled energy balance–snow model.

**An inverse method
to estimate basal
topography**W. J. J. van Pelt et al.

[Title Page](#)[Abstract](#)[Introduction](#)[Conclusions](#)[References](#)[Tables](#)[Figures](#)[⏪](#)[⏩](#)[◀](#)[▶](#)[Back](#)[Close](#)[Full Screen / Esc](#)[Printer-friendly Version](#)[Interactive Discussion](#)

The winter temperature record is used in combination with temperature data from the Longyearbyen weather station to obtain annual temperature estimates. The instrumental record for Longyearbyen since 1912 reveals a much stronger year-to-year variability in winter than in summer temperatures. Additionally, over the instrumental period summer temperatures show a much smaller positive trend (0.011 Kyr^{-1}) than winter temperatures (0.024 Kyr^{-1}). Furthermore, future climate scenarios for this region predict a higher sensitivity of winter temperatures in a changing climate (Førland et al., 2009). Using the ratio of trends in winter temperatures and annual mean temperatures over the instrumental period, the winter temperature record, presented by Divine et al. (2011), has been converted into annual temperature estimates back to 1300 AD. Figure 7 shows smoothed temperature anomalies w.r.t. the reference period 1989–2010. These anomalies are directly used to describe temperature variability for Nordenskiöldbreen since 1300 AD.

An accumulation history, derived from an ice core drilled at the top of the Lomonosovfonna plateau in 1997, provides estimates back to 1598 AD. An accumulation record back to 1715 AD, based on the similar ice core data set, is presented in Pohjola et al. (2002). The time-series are extended to cover the period 1997–2010, using precipitation estimates from the Longyearbyen weather station (computing precipitation anomalies w.r.t to the period 1960–1996 and applying these to the Lomonosovfonna record since 1997). For the period 1300–1598, accumulation data were lacking and values are set to the mean accumulation over the period 1598–2010. The resulting smoothed record of accumulation anomalies since 1300 is shown in Fig. 7.

The ice flow model requires input of the surface mass balance and subsurface temperature (at the snow-ice interface) as surface forcing. Both the mass balance and subsurface temperature depend on air temperature and accumulation. A coupled distributed mass balance–snow model, presented in Van Pelt et al. (2012), is applied to the grid of Nordenskiöldbreen to quantify the mass balance and subsurface temperature sensitivity by performing multiple model experiments with perturbed accumulation and air temperature over the period 1989–2010. Variability in the climate forcing is based on

An inverse method to estimate basal topography

W. J. J. van Pelt et al.

Title Page

Abstract

Introduction

Conclusions

References

Tables

Figures



Back

Close

Full Screen / Esc

Printer-friendly Version

Interactive Discussion



3-hourly climate input from a regional climate model RACMO (temperature and specific humidity) and the Longyearbyen weather station (precipitation and cloud cover). Based on the previously discussed trends in the Longyearbyen instrumental record temperature perturbations are defined per season, e.g. a 1 K temperature perturbation in winter corresponds to a 0.47 K summer temperature perturbation. In this way, seasonality in climate change is taken into account. Seasonal differences in observed precipitation trends are much less pronounced (Førland et al., 2009) and therefore not accounted for in the coupled model experiments. From 2-D gridded output fields of the sensitivity experiments altitudinal profiles of the annual mean mass balance and subsurface temperature are computed for every climate perturbation. The set of height profiles represent vertical lines in the climate sensitivity diagrams in Fig. 8. In order to enable selection of the mass balance and subsurface temperature for every altitude and climate perturbation, curve fitting per height bin and further interpolation are performed to complete the diagrams.

Forcing the dynamical model with the climate time-series (Fig. 7), the diagrams in Fig. 8 serve as look-up tables for the mass balance and subsurface temperature given the current altitude of the grid cell and the reconstructed temperature and precipitation anomaly. With this approach, altitudinal feedbacks of the mass balance and subsurface temperature are implicitly taken into account. Including more detail in the climate time-series (Fig. 7) is not relevant for the dynamical modeling purpose of this study. The sensitivities in Fig. 8 already account for the effect of short-term climate variability (down to a 3-h resolution) on the mass balance and subsurface temperature. Forcing the dynamical model with highly variable climate time-series would lead to unrealistically abrupt changes in, e.g. the snow/ice surface temperature forcing in the accumulation zone.

4.4 Results

Next, we present results of the application of the bedrock reconstruction method on Nordenskiöldbreen. In a first set of experiments (Experiment I), the approach is applied

to a freely-evolving bed, whereas in a second experiment (Experiment II), an alternative approach is applied in which the bed is fixed at locations where radar data are available.

4.4.1 Experiment I: unconstrained bed

First, we discuss results of the application of the inverse method to an unconstrained bed, i.e. the ice-covered bed is not constrained by any radar observations during the iterative method. The sensitivity of the reconstructed bed to modeling errors is studied by performing experiments with a perturbed (1) till strength, (2) initial bed and (3) surface climate forcing.

Both spatial variability in the basal shear stress and bedrock heights are known to affect the surface height and velocity distribution. The basal shear stress depends on the presence of water, weakening the bed, as well as the material till strength, which is known to be high for glaciers underlain by hard crystalline bedrock and much lower for soft-bedded glaciers underlain by sediment (Clarke, 2005). The till strength directly affects the amount of basal lubrication, which implies a strong influence on the ice thickness distribution in areas where basal sliding is significant. Since we lack observational constraints on the sediment distribution underneath Nordenskiöldbreen, we prescribe a spatially invariant material till strength in our experiments. Any surface height variability related to a non-uniform distribution of the material till strength is therefore not taken into account and is acknowledged as a source of uncertainty in our approach.

The sensitivity of the reconstructed bed to changes in the material till strength is investigated by performing runs with different values for the so-called “till-friction angle” parameter ϕ (Eq. 1) with values ranging between 11 and 15 degrees. Snapshots of the reconstructed bed and the surface misfit for the $\phi = 13$ experiment after 1, 5, 10 and 23 iterations are shown in Fig. 9. Clearly, the surface misfit reduces with the number of iterations, indicating convergence of the approach. Starting from a relatively smooth initial bed, the reconstructed bed gradually acquires more smaller-scale features. In accordance with the GPR data (Fig. 6b) an over-deepening is apparent in the main flow with minimum bed heights around sea-level. Figure 10a shows the RMS surface

An inverse method to estimate basal topography

W. J. J. van Pelt et al.

Title Page

Abstract

Introduction

Conclusions

References

Tables

Figures

◀

▶

◀

▶

Back

Close

Full Screen / Esc

Printer-friendly Version

Interactive Discussion



misfit as a function of the number of iterations. A loglog-plot of the smoothed residual norm (Fig. 10b) versus the model norm is used to define a point beyond which further iterations are likely to deteriorate the recovered bed. The bending point, corresponding to the point of maximum curvature is found here after 23 iterations. In all experiments discussed in this section the stopping point was found between 22 and 25 iterations. The surface misfit remains largest near the margins, where the modeled ice thickness is very sensitive to the applied surface forcing leading to uncertain bed corrections. This was the main reason to interpolate the bed in the immediate vicinity of the margin.

Figure 11 shows the reconstructed bed height and bed misfit for the sensitivity experiments with perturbed till strength (1st and 2nd column), perturbed initial bed (3rd column) and perturbed surface forcing (4th column). The bed misfit is computed relative to the final bed height in the $\phi = 13^\circ$ experiment. Perturbing the material till strength affects mean sliding velocities and the ice thickness. A lower till strength enhances ice velocities, thins the ice and hence raises the reconstructed bed in regions where sliding is significant. Largest bed discrepancies arise in locations where the surface slope is large, due to a higher sensitivity of sliding to changes in the basal shear stress. In cold-based higher regions the reconstructed bed is only slightly affected by a change in the till strength.

Regardless of the initial bed, after many iterations the reconstructed bed always seems to converge to a similar bed profile, as illustrated in the synthetic experiments. The bedrock topography after many iterations is hence insensitive to the chosen initial bed. This is in fact only approximately true in the current experiment, where small systematic deviations will remain in the surface heights after many iterations as the model is unable to produce an exact duplicate of the DEM. The stopping principle forces early termination of the inverse method, which implies that the recovered bed at the stopping point may still be influenced by the chosen initial bed profile. Figure 11 (column 3) illustrates that, when repeating the $\phi = 13^\circ$ experiment with an initial bed, which is uniformly lowered by a 100 m, the remaining bed discrepancy after 23 iterations is relatively small (on average 11 m). Nevertheless, the dependence on the initial bed adds

some uncertainty to the reconstructed bed. A good initial estimate of the bed reduces the number of iterations needed and hence increases the accuracy of the reconstructed bed as the deteriorating effect of over-fitting is less prominent.

In a final sensitivity experiment, the $\phi = 13^\circ$ experiment is repeated with a constant-in-time surface forcing, using an air temperature and accumulation rate equivalent to the mean since 1300 AD. The resulting bed misfit w.r.t. the time-dependent forcing experiment (Fig. 11, 4th column) illustrates that applying a constant surface forcing raises the bed in higher regions (thinner ice) and lowers the bed in lower regions (thicker ice). The temperature time-series (Fig. 7) reveal relatively high temperatures since 1900, preceded by a relatively cold period since around 1600. In the non-constant climate experiment the ice thickens significantly over the entire grid for the period 1600–1900, due to a positive mass balance as well as a reduction of sliding velocities, following a drop in surface temperatures (advection of colder ice to the bed). Since around 1900, relatively high temperatures induce more melting particularly in the lower regions, locally thinning the ice (Fig. 11). As a result of surface steepening, enhanced sliding velocities gradually lead to thinning of higher regions as well. Since this dynamical thinning process is slow, relatively thick ice is still present in 2007 in the time-dependent climate experiment. The relatively large and systematic bed misfit found when ignoring the time-dependence of the surface forcing indicates the relevance of accounting for temporal variability when recovering basal topography or initializing ice flow models for forecasting experiments.

Next, the reconstructed beds in the sensitivity experiments are validated against observed bed heights, obtained using Ground Penetrating Radar during a field campaign in 2010. A scatterplot of observed bed heights (a) and ice thicknesses (b) versus reconstructed values for the experiments with varying till strength is shown in Fig. 12. As mentioned, changing the material till strength affects the mean ice thickness and induces a shift in the mean bed height in areas where sliding is significant. Figure 12 illustrates that much of the variability in the observed bed heights and ice thickness is recovered by the model. Nevertheless, significant local errors in the bed remain,

An inverse method to estimate basal topography

W. J. J. van Pelt et al.

[Title Page](#)[Abstract](#)[Introduction](#)[Conclusions](#)[References](#)[Tables](#)[Figures](#)[Back](#)[Close](#)[Full Screen / Esc](#)[Printer-friendly Version](#)[Interactive Discussion](#)

which can be ascribed to multiple factors. In fact, the bed height discrepancies in the scatterplot reflect the sum of all uncertainties involved in the inverse approach, including uncertainties in the model physics, climate forcing, surface data, bed data and the stopping principle. Differences in mean thickness, the RMS thickness misfit, the mean thickness misfit and the correlation coefficient are computed for all sensitivity experiments and presented in Table 1. The lowest RMS misfit and a high correlation coefficient are found for the $\phi = 13^\circ$ experiment, which can hence be regarded as the best estimate. Perturbing the initial bed affects the correlation coefficient and RMS misfit only slightly, indicating robustness of the approach for different initial beds. Applying a constant surface forcing leads to a lower agreement between modeled and observed ice thicknesses, indicating the relevance of using a time-dependent climate forcing.

Additionally, a comparison of observed ice thicknesses with theoretically-derived values, based on the perfect-plasticity assumption, is made. In the perfect-plasticity assumption (Nye, 1951), the local ice thickness H is directly computed from the surface slope s , while assuming a constant yield stress τ_0 :

$$H = \frac{\tau_0}{\rho g s}, \quad (3)$$

where g is the gravitational acceleration and ρ the density of ice. The perfect-plasticity method computes unrealistically large ice thicknesses when the surface slope approaches zero. Therefore, a minimum slope is defined, below which the ice thickness is not computed and determined by interpolation. Local yield stresses have been computed for all GPR grid points, using observed ice thicknesses and slopes from the DEM. The mean of the local yield stresses is used as the constant yield stress in the perfectly-plasticity method. Beds were reconstructed for three different slope thresholds (0.015, 0.02 and 0.04) and the resulting beds are shown in Fig. 13. A high slope threshold (Fig. 13c) implies that bed heights cannot be determined for a large part of the grid and are hence determined by interpolation. On the other hand, with a low slope threshold (Fig. 13a) ice thicknesses are computed for a larger part of the grid, but the larger thicknesses are more uncertain. Comparing the derived beds in Fig. 13 to the

An inverse method to estimate basal topography

W. J. J. van Pelt et al.

[Title Page](#)[Abstract](#)[Introduction](#)[Conclusions](#)[References](#)[Tables](#)[Figures](#)[Back](#)[Close](#)[Full Screen / Esc](#)[Printer-friendly Version](#)[Interactive Discussion](#)

final bed in the $\phi = 13^\circ$ experiment (Fig. 9) reveals quite significant discrepancies. It should be noted that the perfect plasticity assumption is a simplified form of the shallow ice approximation (all shear is concentrated at the base) in which longitudinal stresses are ignored. The approach is therefore unlikely to perform well in areas of significant sliding. Correlating the perfectly-plastic beds against the radar observations (Table 1) reveals markedly lower correlation coefficients with values ranging between 0.67 and 0.71.

In Den Ouden et al. (2010), surface velocity data over the period 2006–2009 gathered using GPSs at multiple locations on Nordenskiöldbreen are presented. Figure 14 shows a distributed map of modeled final annual mean ice velocities in 2007 in the $\phi = 13^\circ$ experiment. The approximate GPS positions are marked and modeled (yellow) and observed (white) annual mean values are shown. Modeled and observed velocities agree reasonably well, although some of the spatial variability in observed surface velocities is not present in the modeled velocities. Discrepancies can be ascribed to many factors, including (1) the lack of modeled small-scale bed and surface height features, (2) the lack of spatial variability in till strength, (3) uncertainty in the position of the temperate to cold base transition, (4) the fact that observed point measurements are compared with area-averaged model velocities and (5) possible unmodeled temporal variability in ice velocities over the relatively short period of observations.

4.4.2 Experiment II: constrained bed

In the previous experiments, bed height data were not used to constrain the bed and were only used for validation purposes. Next, we present an alternative approach in which the bed is held fixed in locations where bed heights are known from GPR observations. The iterative method then attempts to recover the bed for the remainder of the grid. This approach hence provides an alternative method that could be used when scarce bed data are available and the main goal is to estimate the bed for the grid not covered by the observations.

An inverse method to estimate basal topography

W. J. J. van Pelt et al.

Title Page

Abstract

Introduction

Conclusions

References

Tables

Figures



Back

Close

Full Screen / Esc

Printer-friendly Version

Interactive Discussion



We repeat Experiment I with $\phi = 13^\circ$, with the only difference being the fixed bed at radar grid points. The L-curve stopping criterion indicates a knick point around 25 iterations and the iterative method is terminated at this point. The reconstructed bed, the remaining surface misfit and the difference between the reconstructed topography and the bed in Experiment I with $\phi = 13^\circ$ are shown in Fig. 15. Comparing the surface misfit distribution in Fig. 15b to the pattern in Fig. 9 reveals that the misfit remains larger in regions close to the GPR data grid points (Fig. 6). This is expected as the bed is not freely evolving in these areas. The difference between the bed in Experiment I and II (Fig. 15c) illustrates that bed heights of the grid points in the vicinity of the fixed bed grid points tend to compensate for the absence of adjustments of the fixed grid cells. E.g. if a positive surface misfit occurs for a fixed grid point, the surrounding freely evolving grid points likely also experience a positive surface misfit and a negative bed correction. In the end, the accumulated negative bed correction will be larger than in Experiment I, since the bed over-compensates for the lack of movement of the constrained grid cells. This explains the alternating bed discrepancy pattern, visible in Fig. 15c, with an average bed discrepancy close to zero. Far away from the fixed grid cells, the effect on the reconstructed bed is very limited. It is hard to say whether fixing the bed at bed data locations leads to an improved bed reconstruction in comparison with Experiment I, since means to validate the unconstrained part of the reconstructed bed are lacking. One might argue that in Experiment II the bed is more reliable at the GPR locations, but somewhat less reliable in the vicinity of the GPR locations, due to the aforementioned over-compensation of the bed. Both approaches provide useful means to initialize ice flow model for prognostic experiments, since the surface misfit at the end of the iterations is minimized. In absence of bed data, the approach in Experiment I is the only way to reconstruct basal topography. In that case, surface velocity data might help to calibrate uncertain model parameters affecting the amount of basal lubrication.

An inverse method to estimate basal topography

W. J. J. van Pelt et al.

[Title Page](#)[Abstract](#)[Introduction](#)[Conclusions](#)[References](#)[Tables](#)[Figures](#)[⏪](#)[⏩](#)[◀](#)[▶](#)[Back](#)[Close](#)[Full Screen / Esc](#)[Printer-friendly Version](#)[Interactive Discussion](#)

5 Conclusions and discussion

In this study, a simple bedrock recovery method is presented and applied in synthetic experiments and in a real-world setting (Nordenskiöldbreen, Svalbard). The inverse method can effectively be used to reconstruct distributed beds when bed data is scarce or lacking. Requirements for the method include a surface height data set, an ice flow model and a surface climate forcing. The approach does not require surface velocity fields as input and relies on accurate surface height data, which are generally readily available from DEMs. The 3-D thermo-mechanically coupled ice flow model PISM has been used as a forward model in time-dependent experiments. Ice flow in PISM is determined using combined stress balances in which the rate of sliding is determined by the SSA with the basal shear stress controlled by the material till strength and basal thermodynamics. The iterative correction method aims to reduce the discrepancy between modeled and observed surface topography by directly using the surface height misfit to update the bed.

Synthetic experiments with a temporally constant surface forcing demonstrate the functionality of the inverse method. It is illustrated that local bed adjustments, despite its non-local surface expression, lead to effective reduction of the surface misfit and recovery of the reference bed with the number of iterations. The robustness of the method when changing the initial bed, relaxation factor, mass balance forcing and bump dimensions has been investigated. Main findings include that: (1) results are shown to be insensitive to the initial bed after many iterations, (2) an optimum value for the relaxation factor can be selected for which fastest stable convergence occurs and (3) larger bumps are more easily resolved than smaller ones.

In contrast to the synthetic experiments, application of the method to Nordenskiöldbreen involves dealing with time- and height-dependent climate input, leading to a non-steady final geometry, and dealing with modeling and data errors, implying a risk of overfitting. A time- and height-dependent surface forcing was constructed using reconstructed temperature and accumulation over the period 1300–2007 in combination

TCD

7, 873–920, 2013

An inverse method to estimate basal topography

W. J. J. van Pelt et al.

Title Page

Abstract

Introduction

Conclusions

References

Tables

Figures

◀

▶

◀

▶

Back

Close

Full Screen / Esc

Printer-friendly Version

Interactive Discussion



An inverse method to estimate basal topography

W. J. J. van Pelt et al.

Title Page

Abstract

Introduction

Conclusions

References

Tables

Figures



Back

Close

Full Screen / Esc

Printer-friendly Version

Interactive Discussion



with output from sensitivity experiments with a coupled distributed energy balance–snow model. An L-curve stopping criterion has been used to minimize contamination of the bed with undesired variability related to data and modeling errors. Bed height data along a radar track are used for validation of the modeled bed topography. Sensitivity experiments on an unconstrained bed all indicate convergence of the inverse iterative method. We find that (1) the chosen material till strength parameter significantly affects the mean modeled bed height in the sliding zone, (2) the initial bed has a small impact on the bed reconstruction, and (3) a constant-in-time surface forcing reduces the quality of the reconstructed bed. While all errors in the approach, related to uncertainty in the model physics, termination of the correction method, surface height data and surface forcing, are absorbed in the reconstructed bed, we find correlations up to $R = 0.89$ when comparing reconstructed ice thicknesses with observations. The best estimate of the bed has a mean error of 61 m. The remaining unexplained variability in bed heights can mainly be ascribed to uncertain model physics (particularly sliding) rather than inaccuracy of the inverse method itself. All together, the lack of spatial variability of the material till strength, inaccuracy of the modeled polythermal basal structure, uncertainty in the climate reconstruction, inaccuracy due to overfitting or underfitting in some areas and uncertainty in upscaling local radar height data onto a coarser grid contribute to the bed error. The approach in this study is shown to produce more accurate bed estimates for this glacier than obtained using the perfect-plasticity assumption (using different minimum slope thresholds). In a final experiment, the bed was held fixed in locations where bed heights were known from the radar data. Here, the inverse method provides a useful tool to interpolate the bed between known bed heights. However, reconstructed bed heights in the immediate vicinity of fixed bed heights are likely over-compensating for the lack of movement of the fixed grid cells.

A better agreement between modeled and observed thicknesses could be obtained by more precise selection of a constant material till strength or including a spatial dependence of the till strength. Furthermore, extending the subglacial model with a water transport scheme would allow for detailed modeling of spatio-temporal variability in

subglacial water pressures and basal lubrication. Additional data could help to further constrain uncertain model parameters. This is however beyond the main scope of this work, in which we aim to demonstrate convergence and applicability of the inverse method. The application to Nordenskiöldbreen sets an example of how the method can be used on a real glacier geometry. The functionality of the inverse approach does not depend on the accuracy of the surface forcing and the quality of the ice flow model, implying that the applicability of the approach is not constrained to a single model or glacier. Obviously, the accuracy of the reconstructed bed does depend on the choice of model and the reliability of the prescribed surface forcing. As this method can potentially be applied to estimate the thickness distribution of larger sets of glaciers and ice caps, e.g. to estimate ice volume, one could decide to use a computationally inexpensive ice flow model at the expense of detail in the reconstructed bed.

A major advantage of the approach is that, in addition to reconstructing basal topography, it directly provides a means to spin-up ice flow models for forecasting experiments, since the method searches for a bed for which modeled surface heights approach DEM values and thermodynamics are initialized at the end of a time-dependent experiment. Alternatively, in case an accurate map of basal topography would already be available from observations, an approach as in Pollard and DeConto (2012) can be used to constrain spatial variability in basal slipperiness. However, for many glaciers and ice caps, bedrock data are scarce or absent and the presented approach provides a reasonable method for spin-up.

The L-curve stopping criterion provides a reasonable means to terminate the iterative procedure before the recovered bed gets too severely polluted with undesirable noise. Whether adjustments of the bed are still an improvement depends on the relative significance of modeling errors in respect to the bed to surface transfer amplitude. Both the magnitude of modeling errors and the transfer amplitude may vary significantly from one place to another, implying that at the stopping point some areas are prone to overfitting, whereas in other places underfitting is likely to occur. In this study, a constant relaxation factor K has been used and no attempt has been made to apply

An inverse method to estimate basal topography

W. J. J. van Pelt et al.

[Title Page](#)[Abstract](#)[Introduction](#)[Conclusions](#)[References](#)[Tables](#)[Figures](#)[Back](#)[Close](#)[Full Screen / Esc](#)[Printer-friendly Version](#)[Interactive Discussion](#)

An inverse method to estimate basal topography

W. J. J. van Pelt et al.

Title Page

Abstract

Introduction

Conclusions

References

Tables

Figures

◀

▶

◀

▶

Back

Close

Full Screen / Esc

Printer-friendly Version

Interactive Discussion



weighted bed corrections, with stronger corrections in areas where bed corrections are more likely an improvement and weaker corrections in regions where overfitting is more likely to occur. Assigning spatially dependent values to K seems only feasible when a distribution of the magnitude of modeling errors as well as the bed to surface transfer amplitude can reasonably be defined, which is not straightforward. Examples of a possible spatial dependence of K could include gradually weaker corrections towards the margins, where modeling errors become more significant, and stronger corrections in high-sloping regions, where the bed to surface transfer amplitude is large. Since the inverse method performs best when the bed to surface transfer amplitude is large, the accuracy of the bed reconstruction is likely to be higher for glaciers with a larger slope and/or a higher slip-ratio (in case a suitable flow model is available).

In future work the presented approach could be used as a spin-up method for prognostic experiments on Nordenskiöldbreen or other glaciers. Proper initialization avoids abrupt changes at the start of prognostic experiments related to the lack of spin-up of internal thermodynamics and the ice thickness distribution, which is inevitably needed to accurately simulate the near-future evolution of glaciers and ice caps.

Acknowledgements. This project is funded through the Royal Netherlands Academy of Arts and Sciences (KNAW) professorship of J. Oerlemans. R. Pettersson and V. A. Pohjola acknowledge funds from the Swedish Science Council, ESF-SvalGlac, the Nordic Centre of Excellence Svali and the Norwegian Polar Institute for support with the field observations. We are further grateful to E. Bueller and M. Habermann for giving useful and constructive comments that helped to improve the manuscript.

References

- Arthern, R. and Gudmundsson, G.: Initialization of ice-sheet forecasts viewed as an inverse Robin problem, *J. Glaciol.*, 56, 527–533, 2010. 888
- Aschwanden, A. and Blatter, H.: Mathematical modeling and numerical simulation of polythermal glaciers, *J. Geophys. Res.*, 114, F01027, doi:10.1029/2008JF001028, 2009. 877

An inverse method to estimate basal topography

W. J. J. van Pelt et al.

Title Page

Abstract

Introduction

Conclusions

References

Tables

Figures

◀

▶

◀

▶

Back

Close

Full Screen / Esc

Printer-friendly Version

Interactive Discussion



- Aschwanden, A., Bueler, E., Khroulev, C., and Blatter, H.: An enthalpy formulation for glaciers and ice sheets, *J. Glaciol.*, 58, 441–457, 2012. 877
- Aster, R., Borchers, B., and Thurber, C.: *Parameter Estimation and Inverse Problems*, Elsevier Academic Press, Burlington, Massachusetts, 2005. 888
- 5 Bueler, E. and Brown, J.: Shallow shelf approximation as a “sliding law” in a thermomechanically coupled ice sheet model, *J. Geophys. Res.*, 114, F03008, doi:10.1029/2008JF001179, 2009. 876, 877, 878
- Clarke, G.: Subglacial processes, *Annu. Rev. Earth Pl. Sc.*, 33, 247–276, 2005. 878, 891
- Clarke, G., Berthier, E., Schoof, C., and Jarosch, A.: Neural networks applied to estimating subglacial topography and glacier volume, *J. Climate*, 22, 2146–2160, 2009. 876
- 10 den Ouden, M. A. G., Reijmer, C. H., Pohjola, V., van de Wal, R. S. W., Oerlemans, J., and Boot, W.: Stand-alone single-frequency GPS ice velocity observations on Nordenskiöldbreen, Svalbard, *The Cryosphere*, 4, 593–604, doi:10.5194/tc-4-593-2010, 2010. 885, 895, 919
- Divine, D., Isaksson, E., Martma, T., Meijer, H., Moore, J., Pohjola, V., van de Wal, R., and Godtliobsen, F.: Thousand years of winter surface air temperature variations in Svalbard and northern Norway reconstructed from ice core data, *Polar Res.*, 30, 7379, doi:10.3402/polar.v30i0.7379, 2011. 888, 889
- 15 Farinotti, D., Huss, M., Bauder, A., Funk, M., and Truffer, M.: A method to estimate the ice volume and ice-thickness distribution of alpine glaciers, *J. Glaciol.*, 55, 422–430, 2009. 875
- 20 Førland, E., Benestad, R., Flatøy, F., Hanssen-Bauer, I., Haugen, J., Isaksen, K., Sorteberg, A., and Ådlandsvik, B.: Climate development in North Norway and the Svalbard 10 region during 1900–2100, *Norsk Polarinstitutt Rapportserie nr. 128*, 2009. 889, 890
- Gudmundsson, G.: Transmission of basal variability to a glacier surface, *J. Geophys. Res.*, 108, 2253, doi:10.1029/2002JB002107, 2003. 879, 881, 884
- 25 Habermann, M., Maxwell, D., and Truffer, M.: Reconstruction of basal properties in ice sheets using iterative inverse methods, *J. Glaciol.*, 58, 795–807, 2012. 887
- Haeberli, W. and Hölzle, M.: Application of inventory data for estimating characteristics of and regional climate-change effects on mountain glaciers: a pilot study with the European Alps, *Ann. Glaciol.*, 21, 206–212, 1995. 875
- 30 Huss, M., Farinotti, D., Bauder, A., and Funk, M.: Modelling runoff from highly glacierized alpine drainage basins in a changing climate, *Hydrol. Process.*, 22, 3888–3902, 2008. 875
- Hutter, K.: *Theoretical Glaciology: Material Science of Ice and the Mechanics of Glaciers and Ice Sheets*. Springer, 1983. 877

An inverse method to estimate basal topography

W. J. J. van Pelt et al.

Title Page

Abstract

Introduction

Conclusions

References

Tables

Figures

◀

▶

◀

▶

Back

Close

Full Screen / Esc

Printer-friendly Version

Interactive Discussion



- Huybrechts, P. and de Wolde, J.: The dynamic response of the Greenland and Antarctic ice sheets to multiple-century climatic warming, *J. Climate*, 12, 2169–2188, 1999. 875
- Joughin, I., MacAyeal, D., and Tulaczyk, S.: Basal shear stress of the Ross ice streams from control method inversions, *J. Geophys. Res.*, 109, 1–62, 2004. 874, 878
- Joughin, I., Bamber, J., Scambos, T., Tulaczyk, S., Fahnestock, M., and MacAyeal, D.: Integrating satellite observations with modelling: basal shear stress of the Filcher-Ronne ice streams, Antarctica, *Philos. T. Roy. Soc. A*, 364, 1795–1814, 2006. 888
- Korona, J., Berthier, E., Bernard, M., Rémy, F., and Thouvenot, E.: SPIRIT. SPOT 5 stereoscopic survey of Polar Ice: reference images and topographies during the fourth International Polar Year (2007–2009), *Isprs J. Photogramm.*, 64, 204–212, 2009. 884, 885
- Leclercq, P. W., Pitte, P., Giesen, R. H., Masiokas, M. H., and Oerlemans, J.: Modelling and climatic interpretation of the length fluctuations of Glaciar Frías (north Patagonian Andes, Argentina) 1639–2009 AD, *Clim. Past*, 8, 1385–1402, doi:10.5194/cp-8-1385-2012, 2012. 879
- Li, H., Ng, F., Li, Z., Qin, D., and Cheng, G.: An extended “perfect-plasticity” method for estimating ice thickness along the flow line of mountain glaciers, *J. Geophys. Res.*, 117, F01020, doi:10.1029/2011JF002104, 2012. 875
- MacAyeal, D.: Large-scale ice flow over a viscous basal sediment – Theory and application to ice stream B, Antarctica, *J. Geophys. Res.*, 94, 4071–4087, 1989. 877
- MacAyeal, D.: The basal stress distribution of Ice Stream E, Antarctica, inferred by control methods, *J. Geophys. Res.*, 97, 595–603, 1992. 874, 878
- Maxwell, D., Truffer, M., Avdonin, S., and Stuefer, M.: An iterative scheme for determining glacier velocities and stresses, *J. Glaciol.*, 54, 888–898, 2008. 888
- McNabb, R. W., Hock, R., O’Neel, S., Rasmussen, L. A., Ahn, Y., Braun, M., Conway, H., Herreid, S., Joughin, I., Pfeffer, W. T., Smith, B. E., and Truffer, M.: Using surface velocities to calculate ice thickness and bed topography: a case study at Columbia Glacier, Alaska, USA, *J. Glaciol.*, 58, 1151, doi:10.3189/2012JoG11J249, 2012. 875
- Michel, L., Picasso, M., Farinotti, D., Bauder, A., Funk, M., and Blatter, H.: Estimating the ice thickness of mountain glaciers with an inverse approach using surface topography and mass-balance, *Inverse Probl.*, 29, 23 pp., 2013. 876, 879
- Morland, L. and Johnson, I.: Steady motion of ice sheets, *J. Glaciol.*, 25, 229–246, 1980. 877

An inverse method to estimate basal topography

W. J. J. van Pelt et al.

Title Page

Abstract

Introduction

Conclusions

References

Tables

Figures

◀

▶

◀

▶

Back

Close

Full Screen / Esc

Printer-friendly Version

Interactive Discussion



Morlighem, M., Rignot, E., Seroussi, H., Larour, E., Dhia, H., and Aubry, D.: A mass conservation approach for mapping glacier ice thickness, *Geophys. Res. Lett.*, 38, L19503, doi:10.1029/2011GL048659, 2011. 875

Nye, J.: The flow of glaciers and ice-sheets as a problem in plasticity, *P. Roy. Soc. Lond. A Mat.*, 207, 554–572, 1951. 875, 887, 894

5 Oerlemans, J.: Climate sensitivity of Franz Josef Glacier, New Zealand, as revealed by numerical modeling, *Arctic Alpine Res.*, 29, 233–239, 1997. 875

Oerlemans, J.: *Glaciers and Climate Change*, Taylor & Francis, 2001. 879

Oerlemans, J., Anderson, B., Hubbard, A., Huybrechts, P., Johannesson, T., Knap, W., Schmeits, M., Stroeven, A., Van de Wal, R., Wallinga, J., and Zuo, Z.: Modelling the response of glaciers to climate warming, *Clim. Dynam.*, 14, 267–274, 1998. 875

10 Paul, F. and Svoboda, F.: A new glacier inventory on southern Baffin Island, Canada, from ASTER data: II. Data analysis, glacier change and applications, *Ann. Glaciol.*, 50, 22–31, 2010. 875

Pettersson, R.: Dynamics of the cold surface layer of polythermal Storglaciären, Sweden, PhD thesis, 2004. 885

15 Plassen, L., Vorren, T., and Forwick, M.: Integrated acoustic and coring investigation of glacial deposits in Spitsbergen fjords, *Polar Res.*, 23, 89–110, 2004. 885

Pohjola, V., Martma, T., Meijer, H., Moore, J., Isaksson, E., Vaikmaa, R., and Van De Wal, R.: Reconstruction of three centuries of annual accumulation rates based on the record of stable isotopes of water from Lomonosovfonna, Svalbard, *Ann. Glaciol.*, 35, 57–62, 2002. 889

20 Pollard, D. and DeConto, R. M.: A simple inverse method for the distribution of basal sliding coefficients under ice sheets, applied to Antarctica, *The Cryosphere*, 6, 953–971, doi:10.5194/tc-6-953-2012, 2012. 876, 878, 899

Raymond, M. and Gudmundsson, G.: On the relationship between surface and basal properties on glaciers, ice sheets, and ice streams, *J. Geophys. Res.*, 110, B08411, doi:10.1029/2005JB003681, 2005. 879, 881, 882, 884

25 Raymond, M. J. and Gudmundsson, G. H.: Estimating basal properties of ice streams from surface measurements: a non-linear Bayesian inverse approach applied to synthetic data, *The Cryosphere*, 3, 265–278, doi:10.5194/tc-3-265-2009, 2009. 875

30 Raymond Pralong, M. and Gudmundsson, G.: Bayesian estimation of basal conditions on Rutford Ice Stream, West Antarctica, from surface data, *J. Glaciol.*, 57, 315–324, 2011. 875

An inverse method to estimate basal topography

W. J. J. van Pelt et al.

Title Page

Abstract

Introduction

Conclusions

References

Tables

Figures

◀

▶

◀

▶

Back

Close

Full Screen / Esc

Printer-friendly Version

Interactive Discussion



- Schoof, C.: Variational methods for glacier flow over plastic till, *J. Fluid Mech.*, 555, 299–320, 2006. 877
- Sergienko, O., Bindschadler, R., Vornberger, P., and MacAyeal, D.: Ice stream basal conditions from block-wise surface data inversion and simple regression models of ice stream flow: application to Bindschadler Ice Stream, *J. Geophys. Res.*, 113, F04010, doi:10.1029/2008JF001004, 2008. 888
- 5 Thorsteinsson, T., Raymond, C., Gudmundsson, G., Bindschadler, R., Vornberger, P., and Joughin, I.: Bed topography and lubrication inferred from surface measurements on fast-flowing ice streams, *J. Glaciol.*, 49, 481–490, 2003. 875
- van Pelt, W. and Oerlemans, J.: Numerical simulations of cyclic behaviour in the Parallel Ice Sheet Model (PISM), *J. Glaciol.*, 58, 347–360, 2012. 878
- 10 van Pelt, W. J. J., Oerlemans, J., Reijmer, C. H., Pohjola, V. A., Pettersson, R., and van Angelen, J. H.: Simulating melt, runoff and refreezing on Nordenskiöldbreen, Svalbard, using a coupled snow and energy balance model, *The Cryosphere*, 6, 641–659, doi:10.5194/tc-6-641-2012, 2012. 885, 889, 913
- Weis, M., Greve, R., and Hutter, K.: Theory of shallow ice shelves, *Continuum Mech. Therm.*, 11, 15–50, 1999. 877
- 15 Winkelmann, R., Martin, M. A., Haseloff, M., Albrecht, T., Bueler, E., Khroulev, C., and Levermann, A.: The Potsdam Parallel Ice Sheet Model (PISM-PIK) – Part 1: Model description, *The Cryosphere*, 5, 715–726, doi:10.5194/tc-5-715-2011, 2011. 876

An inverse method to estimate basal topography

W. J. J. van Pelt et al.

Table 1. Comparison of modeled and theoretically derived ice thicknesses with observations along the radar track (Fig. 6b). δH_{mean} is the discrepancy between modeled and observed mean thickness (2nd column). The 3rd, 4th and 5th column present the root-mean-square error (RMSE), the mean absolute difference and the correlation coefficient (R), respectively. The mean observed ice thickness is 322 m.

Experiment	δH_{mean} (m)	RMSE (m)	Mean diff. (m)	R
$\phi = 11^\circ$	-78	118	96	0.80
$\phi = 13^\circ$	-14	75	61	0.88
$\phi = 15^\circ$	+41	93	76	0.89
Perturbed initial bed	-24	79	65	0.87
Constant surface forcing	-20	90	72	0.84
Perfect-plasticity (slope > 0.015)	-0.1	116	94	0.69
Perfect-plasticity (slope > 0.02)	+18	107	90	0.71
Perfect-plasticity (slope > 0.04)	+106	162	140	0.67

[Title Page](#)
[Abstract](#)
[Introduction](#)
[Conclusions](#)
[References](#)
[Tables](#)
[Figures](#)
[Back](#)
[Close](#)
[Full Screen / Esc](#)
[Printer-friendly Version](#)
[Interactive Discussion](#)

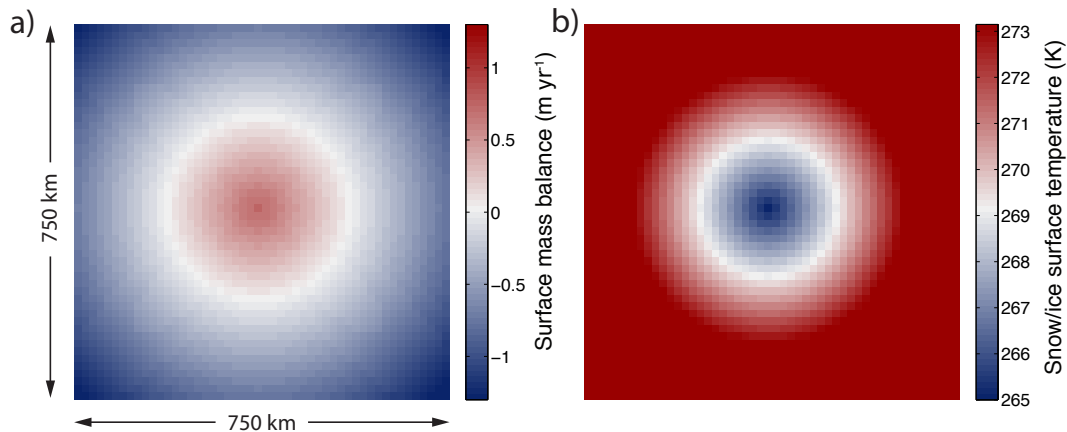



Fig. 1. The prescribed surface mass balance **(a)** and snow/ice surface temperature **(b)** forcing fields in the synthetic experiments.

An inverse method to estimate basal topography

W. J. J. van Pelt et al.

Title Page

Abstract Introduction

Conclusions References

Tables Figures

⏪ ⏩

◀ ▶

Back Close

Full Screen / Esc

Printer-friendly Version

Interactive Discussion



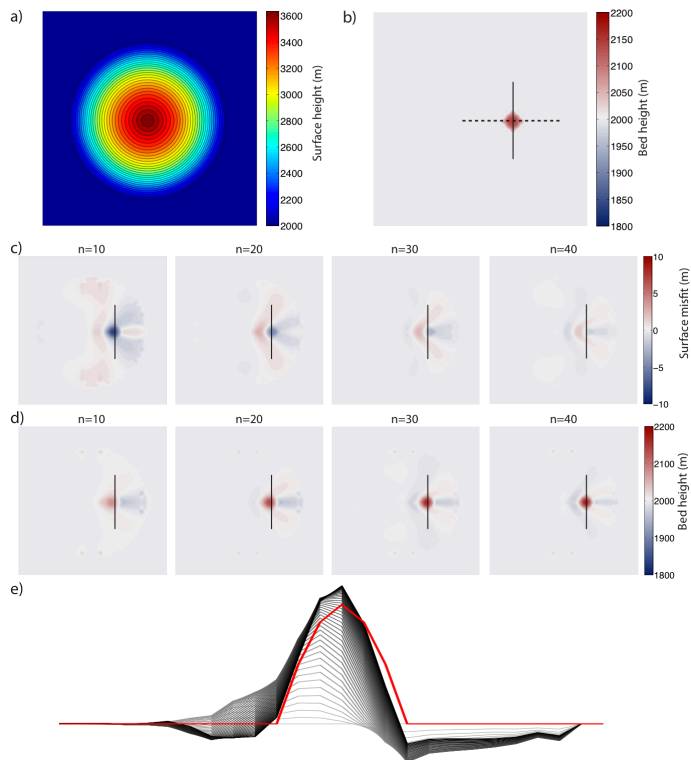


Fig. 2. Recovery of a single bump in an otherwise flat bed. Panels **(a)** and **(b)** show reference surface and bed heights; **(c)** and **(d)** show snapshots of the surface height misfit and recovered bed height after $n = 10, 20, 30$ and 40 iterations. In **(e)** the gradual recovery of the bed is illustrated along the cross-section marked by the dashed line in **(b)**; every line represents the bed after a certain iteration while the grayscale is a measure for the iteration number (low = light gray, high = black); the red line marks the reference bed height. Solid lines in **(b)**, **(c)** and **(d)** mark a fixed position to illustrate movement of the recovered bump and surface misfit.

An inverse method to estimate basal topography

W. J. J. van Pelt et al.

Title Page

Abstract

Introduction

Conclusions

References

Tables

Figures

◀

▶

◀

▶

Back

Close

Full Screen / Esc

Printer-friendly Version

Interactive Discussion



An inverse method to estimate basal topography

W. J. J. van Pelt et al.

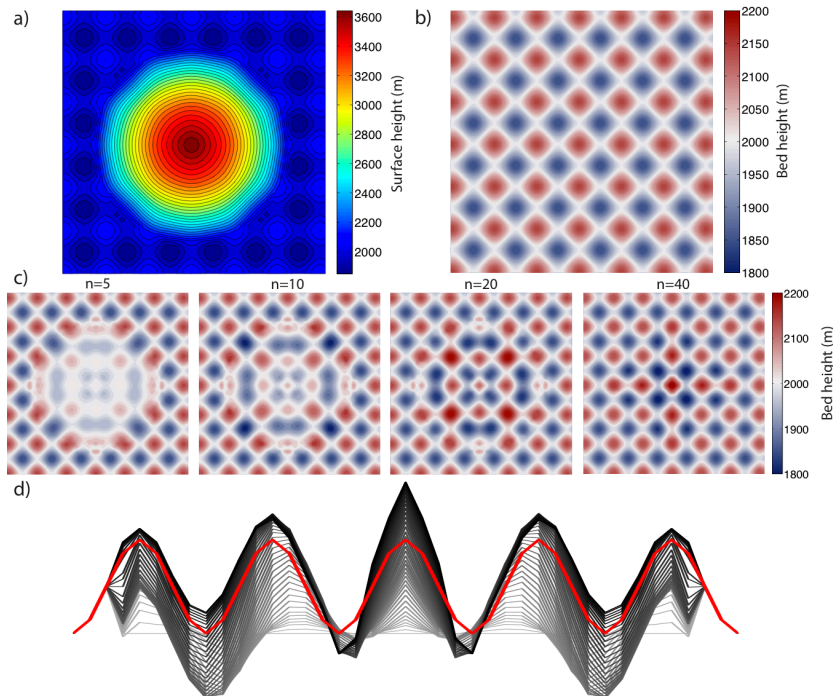


Fig. 3. Recovery of a bump field. The reference surface and bed are shown in **(a)** and **(b)**. Panel **(c)** shows snapshots of the recovered bed height after $n = 5, 10, 20$ and 40 iterations. In **(d)** the gradual recovery of the bed is depicted with every line representing the bed after a certain iteration while the grayscale is a measure for the iteration number (low = light gray, high = black); the red line marks the reference bed height.

[Title Page](#)[Abstract](#)[Introduction](#)[Conclusions](#)[References](#)[Tables](#)[Figures](#)[◀](#)[▶](#)[◀](#)[▶](#)[Back](#)[Close](#)[Full Screen / Esc](#)[Printer-friendly Version](#)[Interactive Discussion](#)

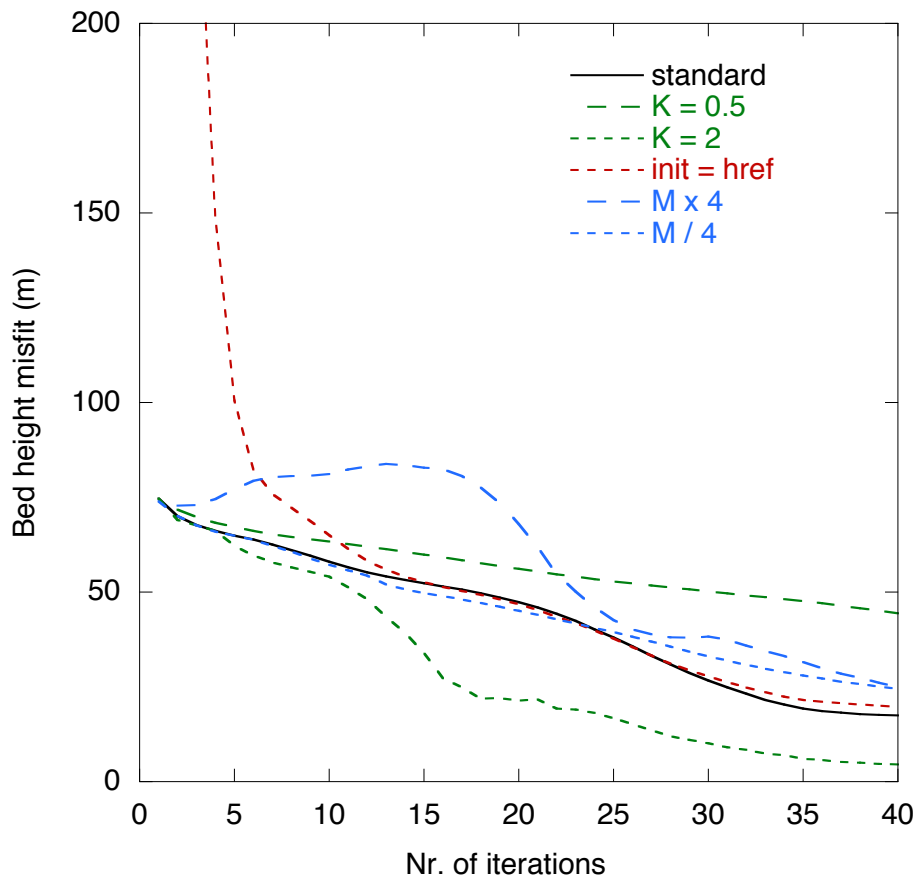


Fig. 4. The root-mean-square bed height misfit versus the number of iterations for experiments with varying relaxation factor K (green), initial bed (red) and balance gradient (blue).

An inverse method to estimate basal topography

W. J. J. van Pelt et al.

Title Page

Abstract Introduction

Conclusions References

Tables Figures

◀ ▶

◀ ▶

Back Close

Full Screen / Esc

Printer-friendly Version

Interactive Discussion



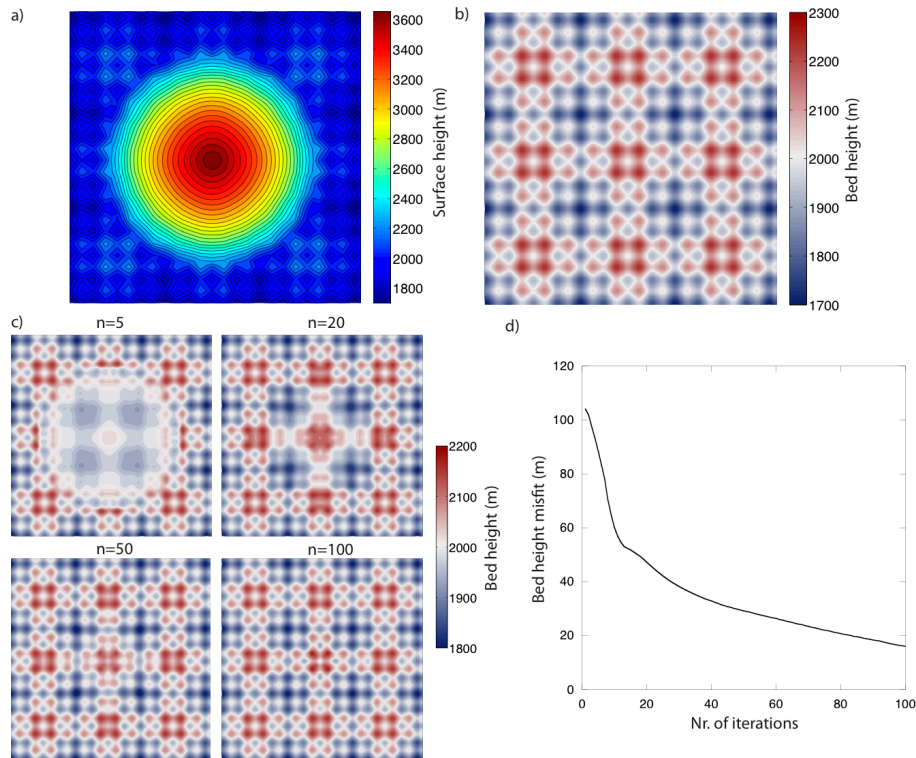


Fig. 5. Recovery of a bump field containing mixed bump sizes. The reference surface and bed are shown in **(a)** and **(b)**. Panel **(c)** shows snapshots of the recovered bed height after $n = 5, 20, 50$ and 100 iterations. **(d)** shows the bed height misfit as a function of the number of iterations.

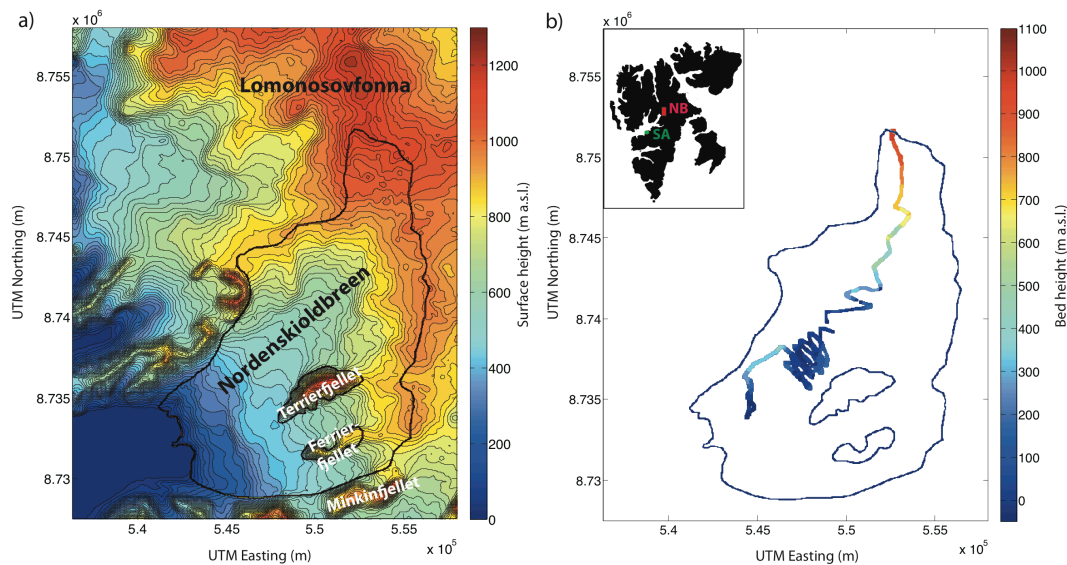


Fig. 6. Observed surface heights from a DEM **(a)** and bed heights from radio-echo sounding **(b)**. The black line marks the extent of Nordenskiöldbreen, connected along the ice divide to the Lomonosovfonna ice plateau. The location of Terrierfjellet, Ferrierfjellet and Minkinfjellet is indicated. The inset figure in **(b)** shows the Svalbard archipelago with the position of Svalbard Airport (SA) and Nordenskiöldbreen (NB).

An inverse method to estimate basal topography

W. J. J. van Pelt et al.

Title Page

Abstract

Introduction

Conclusions

References

Tables

Figures

◀

▶

◀

▶

Back

Close

Full Screen / Esc

Printer-friendly Version

Interactive Discussion



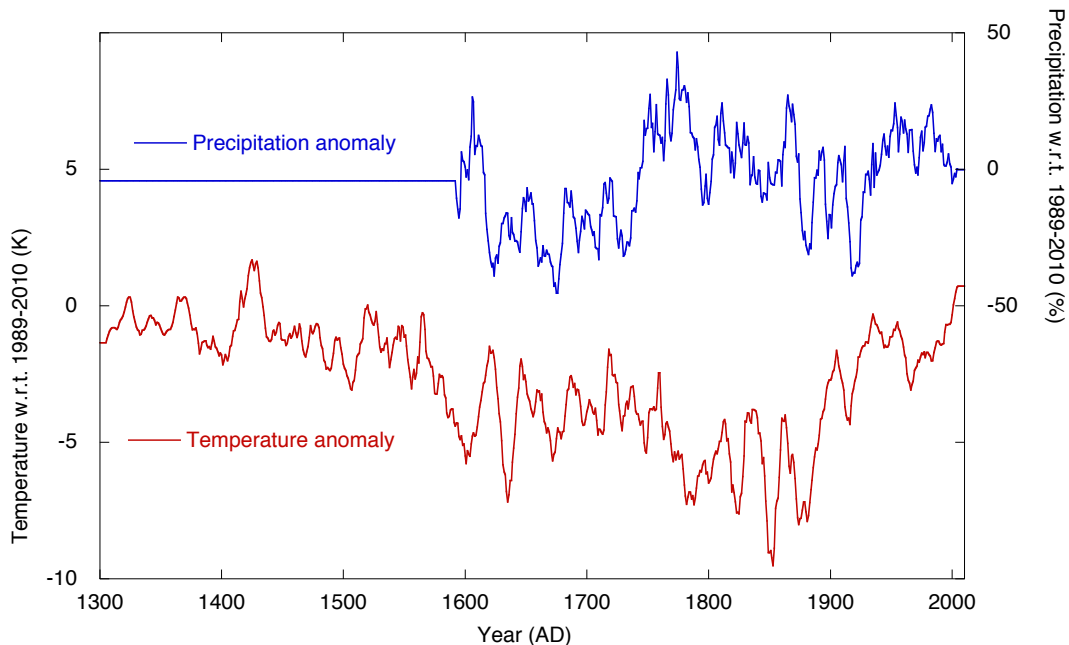


Fig. 7. Time-series of reconstructed air temperature (red) and precipitation (blue) relative to the mean over the reference period 1989–2010. A 10-yr smoothing filter is applied. Precipitation anomalies are given in percentages, whereas temperature anomalies are absolute deviations.

An inverse method to estimate basal topography

W. J. J. van Pelt et al.

Title Page

Abstract Introduction

Conclusions References

Tables Figures

◀ ▶

◀ ▶

Back Close

Full Screen / Esc

Printer-friendly Version

Interactive Discussion



An inverse method to estimate basal topography

W. J. J. van Pelt et al.

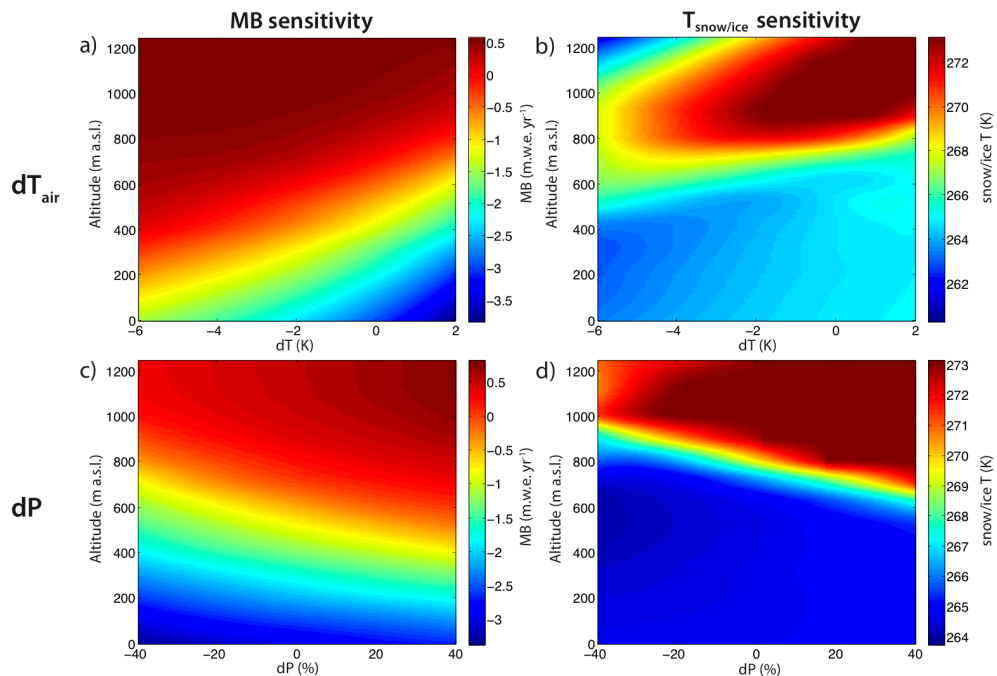


Fig. 8. Diagrams showing the surface mass balance sensitivity as a function of altitude for changes in air temperature **(a)** and precipitation **(c)**. The sensitivity of the snow/ice temperature as a function of altitude for changes in air temperature and precipitation is shown in **(b)** and **(d)** respectively. Sensitivities were obtained from output of sensitivity experiments with a coupled energy balance–snow model, ran over the period 1989–2010. Temperature and precipitation anomalies are defined w.r.t the mean over the period 1989–2010. More details can be found in Van Pelt et al. (2012).

[Title Page](#)
[Abstract](#)
[Introduction](#)
[Conclusions](#)
[References](#)
[Tables](#)
[Figures](#)
[Back](#)
[Close](#)
[Full Screen / Esc](#)
[Printer-friendly Version](#)
[Interactive Discussion](#)

An inverse method to estimate basal topography

W. J. J. van Pelt et al.

Title Page

Abstract

Introduction

Conclusions

References

Tables

Figures

◀

▶

◀

▶

Back

Close

Full Screen / Esc

Printer-friendly Version

Interactive Discussion

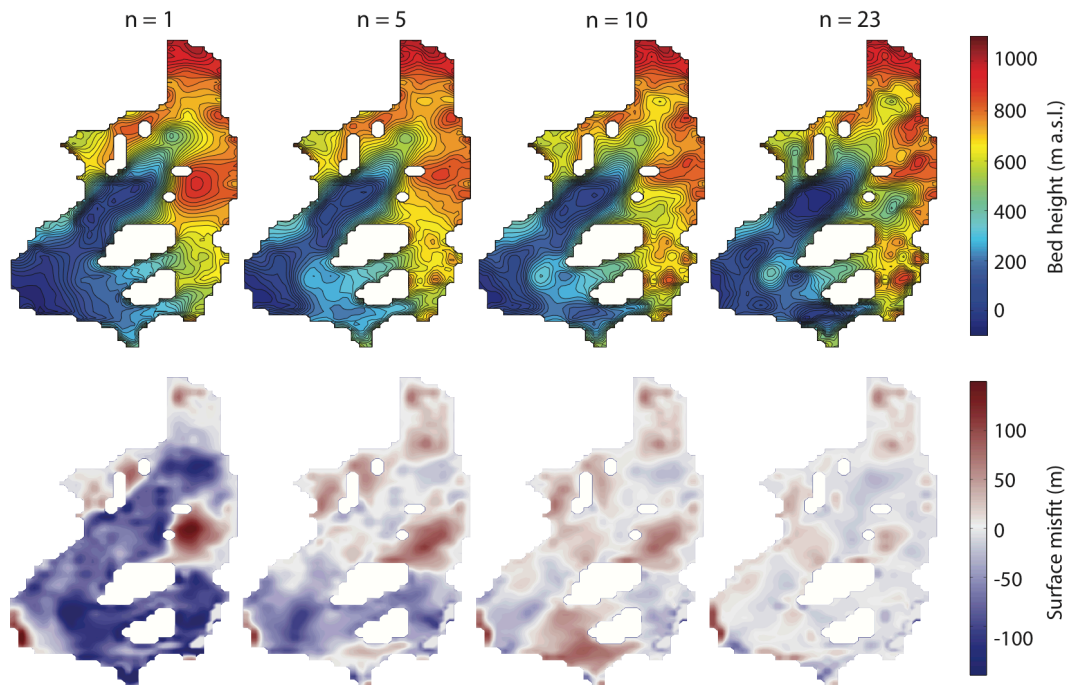


Fig. 9. Snapshots of the recovered bed (1st row) and surface height misfit (2nd row) after $n = 1$, 5, 10 and 23 iterations in the experiment with $\phi = 13$.

An inverse method to estimate basal topography

W. J. J. van Pelt et al.

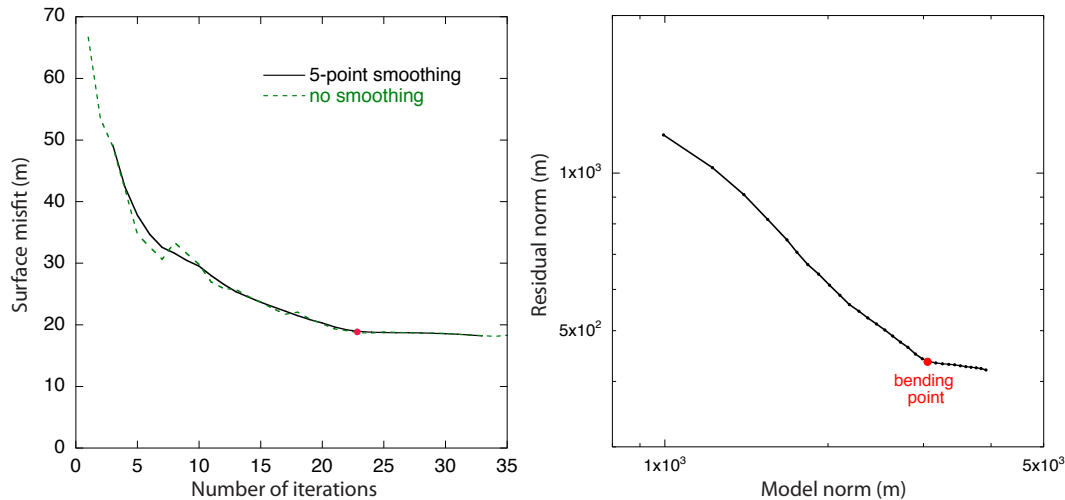


Fig. 10. Plots showing the surface misfit vs. the number of iterations (left panel) and the residual norm vs. the model norm (right panel) for the $\phi = 13^\circ$ experiment. A bending point in the L-curve, used to define a stopping point for the iterative method, is marked in red. Five-point smoothing of the residual norm series facilitates selecting a bending point in right panel.

[Title Page](#)[Abstract](#)[Introduction](#)[Conclusions](#)[References](#)[Tables](#)[Figures](#)[⏪](#)[⏩](#)[◀](#)[▶](#)[Back](#)[Close](#)[Full Screen / Esc](#)[Printer-friendly Version](#)[Interactive Discussion](#)

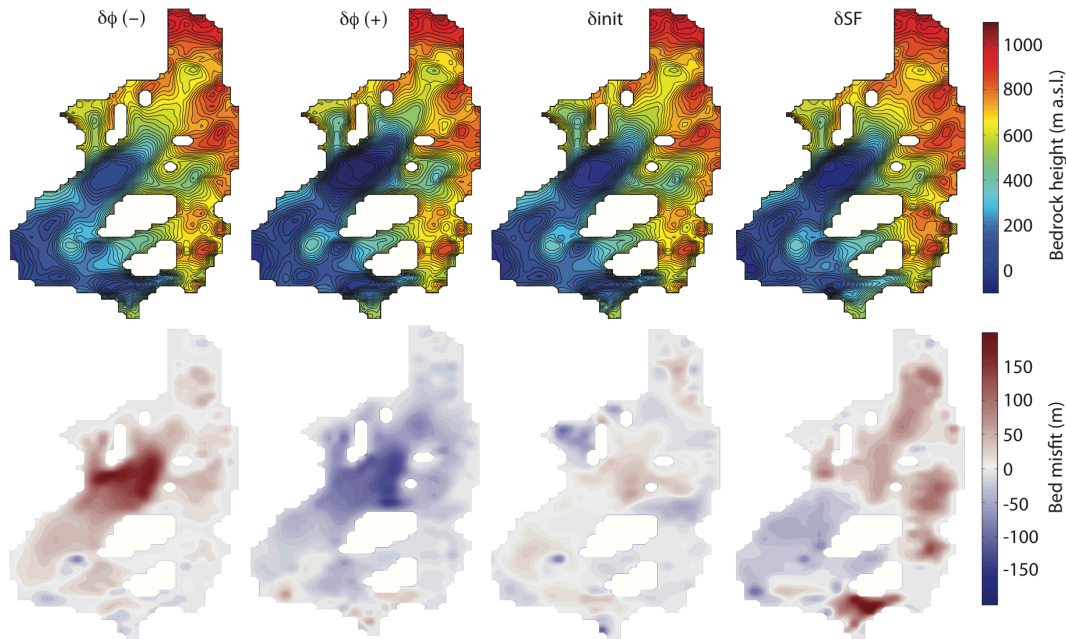


Fig. 11. Final recovered basal topography (1st row) and the corresponding bed misfit (2nd row) w.r.t. to the $\phi = 13^\circ$ experiment after a negative perturbation of the material till strength ($\delta\phi(-)$, 1st column), a positive till strength perturbation ($\delta\phi(+)$, 2nd column), a lowered initial bed (δinit , 3rd column) and using a constant-in-time surface forcing (δSF , 4th column).

An inverse method to estimate basal topography

W. J. J. van Pelt et al.

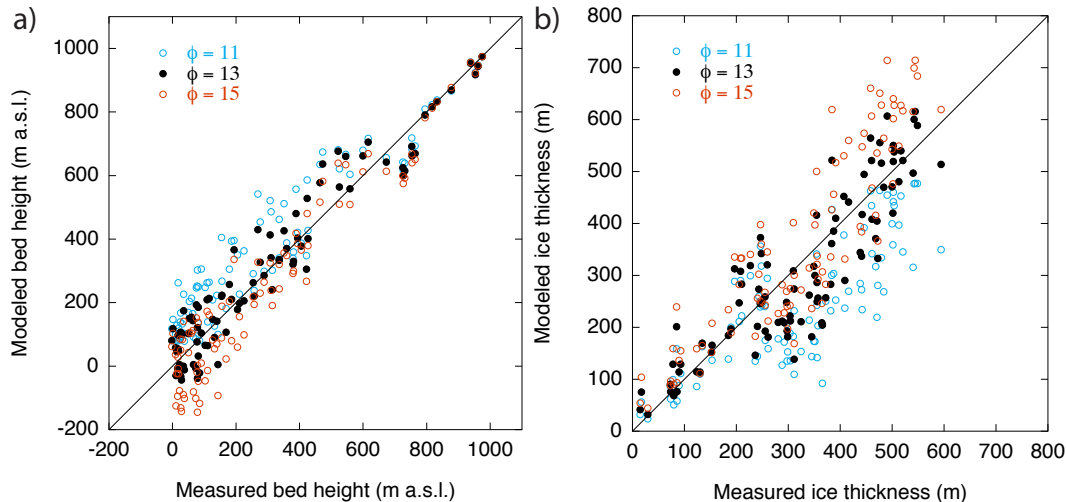


Fig. 12. Scatterplots showing the modeled bed height vs. the observed bed heights from radar **(a)** and modeled vs. measured ice thickness **(b)**. Results are shown for sensitivity experiments with varying material till strength. The corresponding correlation coefficients, RMS misfit, bias and mean error are given in Table 1.

Title Page

Abstract

Introduction

Conclusions

References

Tables

Figures

◀

▶

◀

▶

Back

Close

Full Screen / Esc

Printer-friendly Version

Interactive Discussion



An inverse method to estimate basal topography

W. J. J. van Pelt et al.

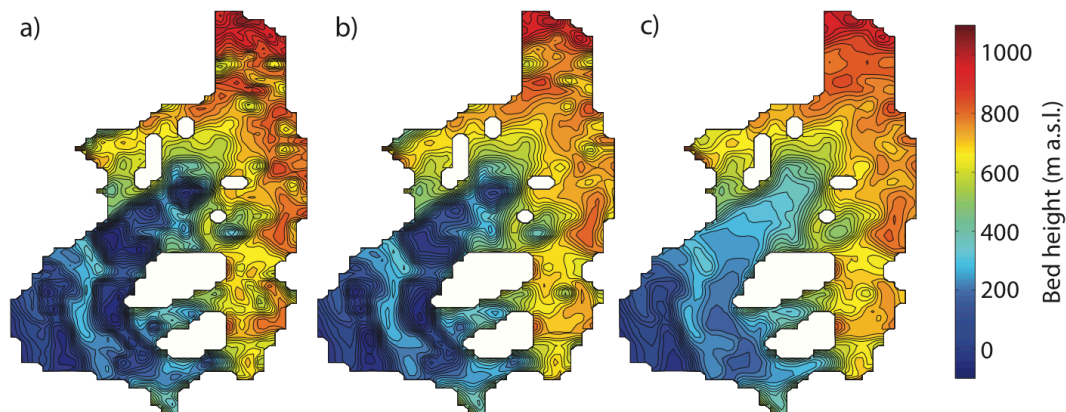


Fig. 13. Bed heights computed using the perfect-plasticity assumption using minimum slope thresholds of 0.015 **(a)**, 0.02 **(b)** and 0.04 **(c)**.

[Title Page](#)[Abstract](#)[Introduction](#)[Conclusions](#)[References](#)[Tables](#)[Figures](#)[⏪](#)[⏩](#)[◀](#)[▶](#)[Back](#)[Close](#)[Full Screen / Esc](#)[Printer-friendly Version](#)[Interactive Discussion](#)

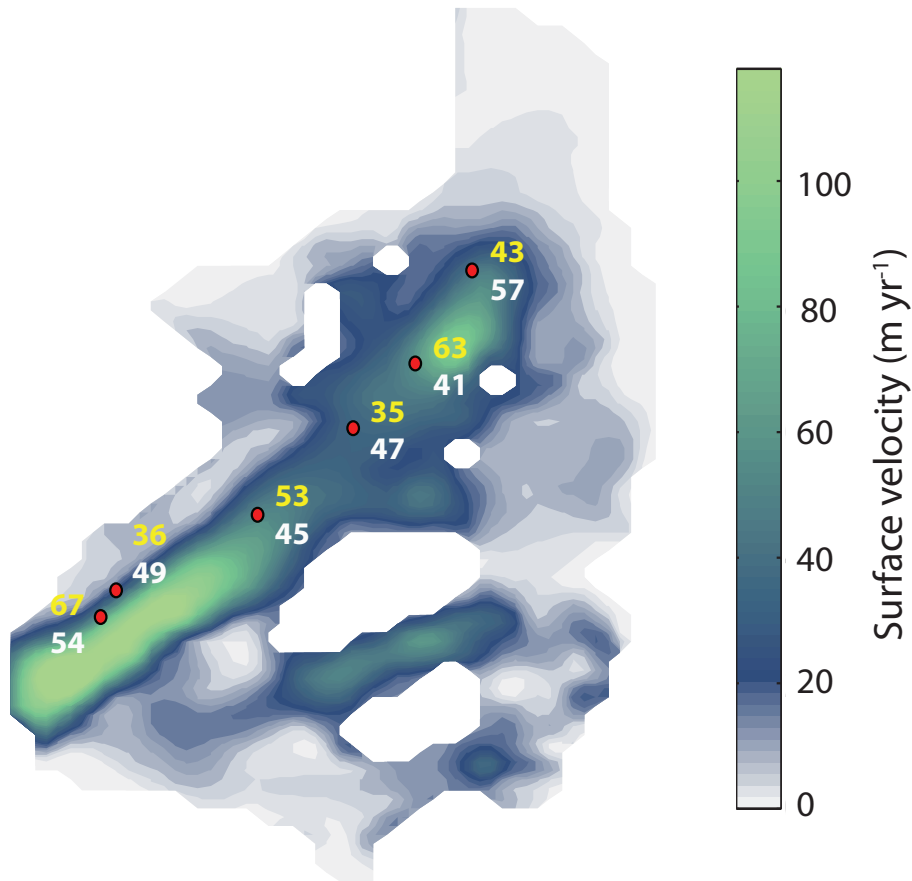


Fig. 14. Distributed map of simulated ice velocities in 2007 for the $\phi = 13^\circ$ experiment. At the locations of velocity observations, reported in Den Ouden et al. (2010), observed velocities (white) and simulated velocities (yellow) are indicated.

An inverse method to estimate basal topography

W. J. J. van Pelt et al.

Title Page	
Abstract	Introduction
Conclusions	References
Tables	Figures
◀	▶
◀	▶
Back	Close
Full Screen / Esc	
Printer-friendly Version	
Interactive Discussion	



An inverse method to estimate basal topography

W. J. J. van Pelt et al.

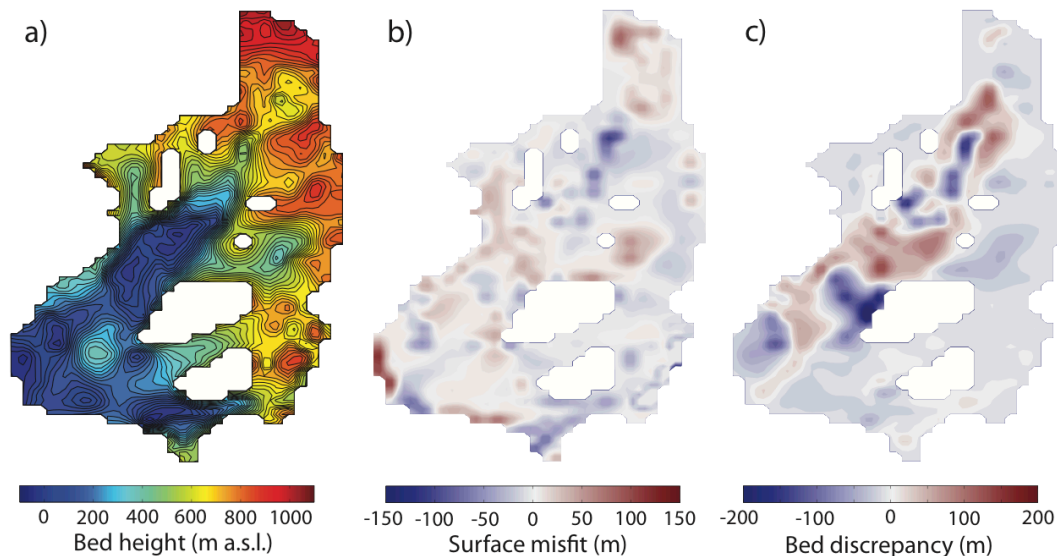


Fig. 15. Reconstructed bed with bed heights fixed when radar observations are available in panel (a). The corresponding remaining surface misfit is shown in panel (b). Panel (c) shows the bed misfit w.r.t. to the basal topography in the unconstrained experiment with $\phi = 13^\circ$.

Title Page

Abstract

Introduction

Conclusions

References

Tables

Figures

◀

▶

◀

▶

Back

Close

Full Screen / Esc

Printer-friendly Version

Interactive Discussion

