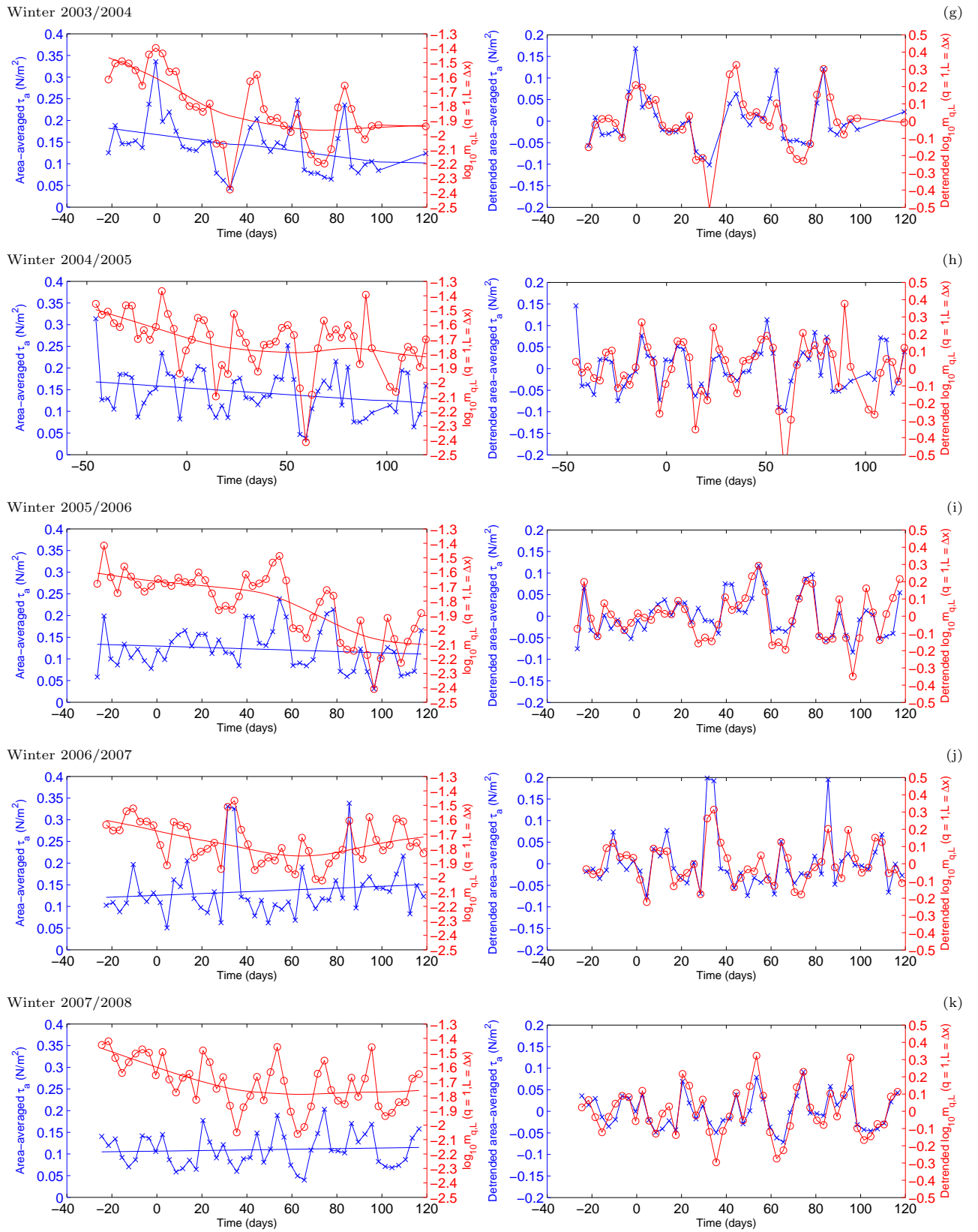


Supplementary Figure 1. Time series of $\bar{\tau}_a$ (N/m^2) and $\bar{m}_{q,L}$ (for $q = 1$ and $L = \Delta x$) in the 11 analyzed winter seasons (a–k): original data with trend lines (left) and detrended data (right). Time is shown in days after 1. January of the respective year.



Supplementary Figure 1. — Continued.