

Large sensitivity of a Greenland ice sheet model to atmospheric forcing fields

Supplementary material

A. Quiquet¹, H. J. Punge², C. Ritz¹, X. Fettweis³, M. Kageyama², G. Krinner¹, D. Salas y Mélia⁴, and J. Sjolte⁵

¹UJF Grenoble 1 / CNRS, Laboratoire de Glaciologie et Géophysique de l'Environnement (LGGE) UMR 5183, Grenoble, F-38041, France

²Laboratoire des Sciences du Climat et de l'Environnement (LSCE), IPSL, CEA-CNRS-UVSQ, Gif-sur-Yvette, France

³Département de Géographie, Université de Liège, Liège, Belgium

⁴CNRM-GAME, URA CNRS-Météo-France 1357, Toulouse, France

⁵Centre for Ice and Climate, Niels Bohr Institute, Copenhagen, Denmark

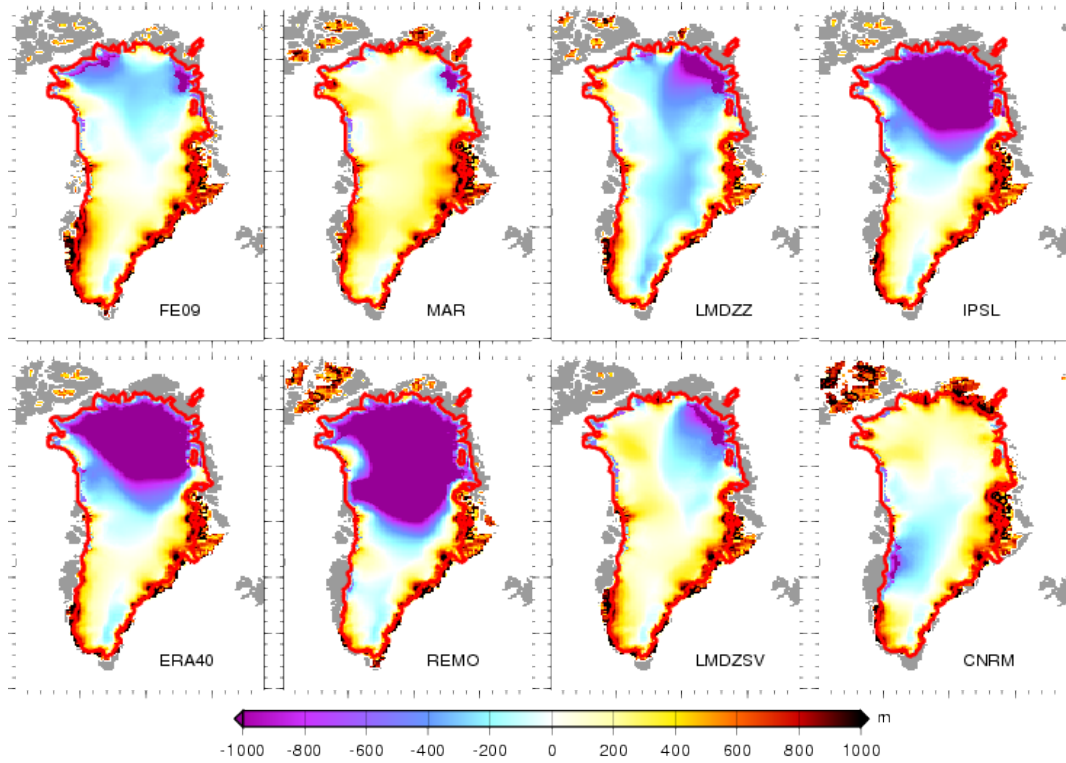


Fig. 1. Differences between simulated topography and observed topography for each individual atmospheric dataset.

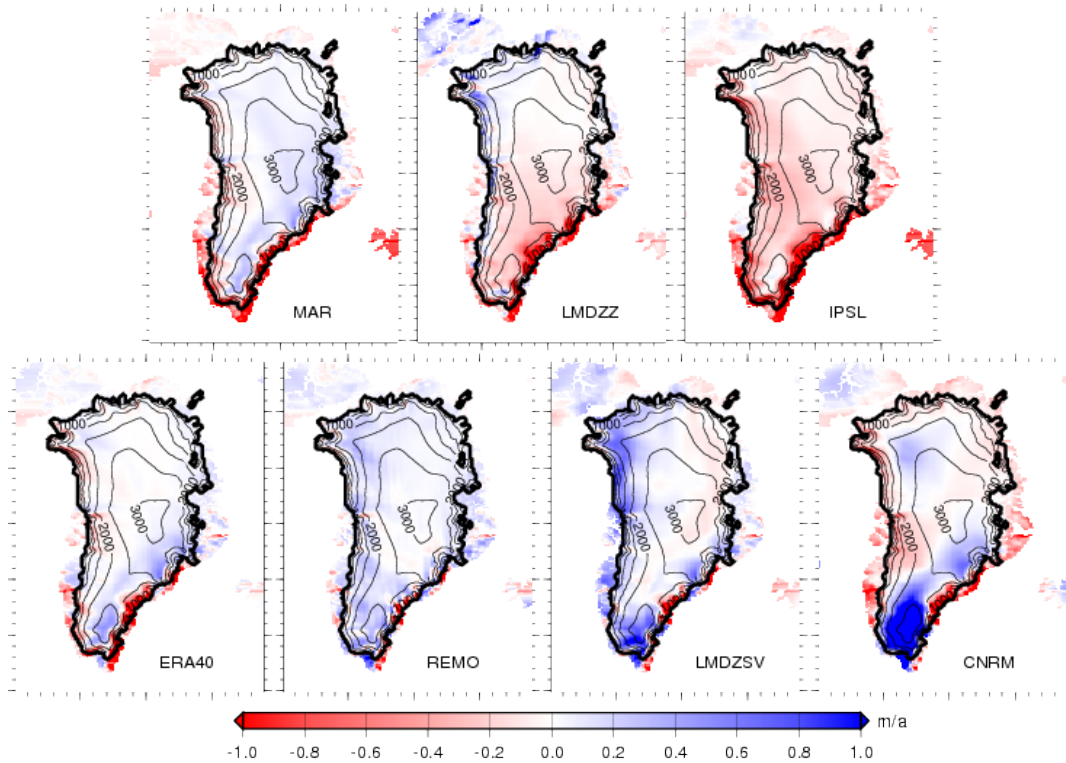


Fig. 2. Differences between each individual atmospheric dataset and FE09 dataset for the annual precipitation rate (in meter of ice equivalent).

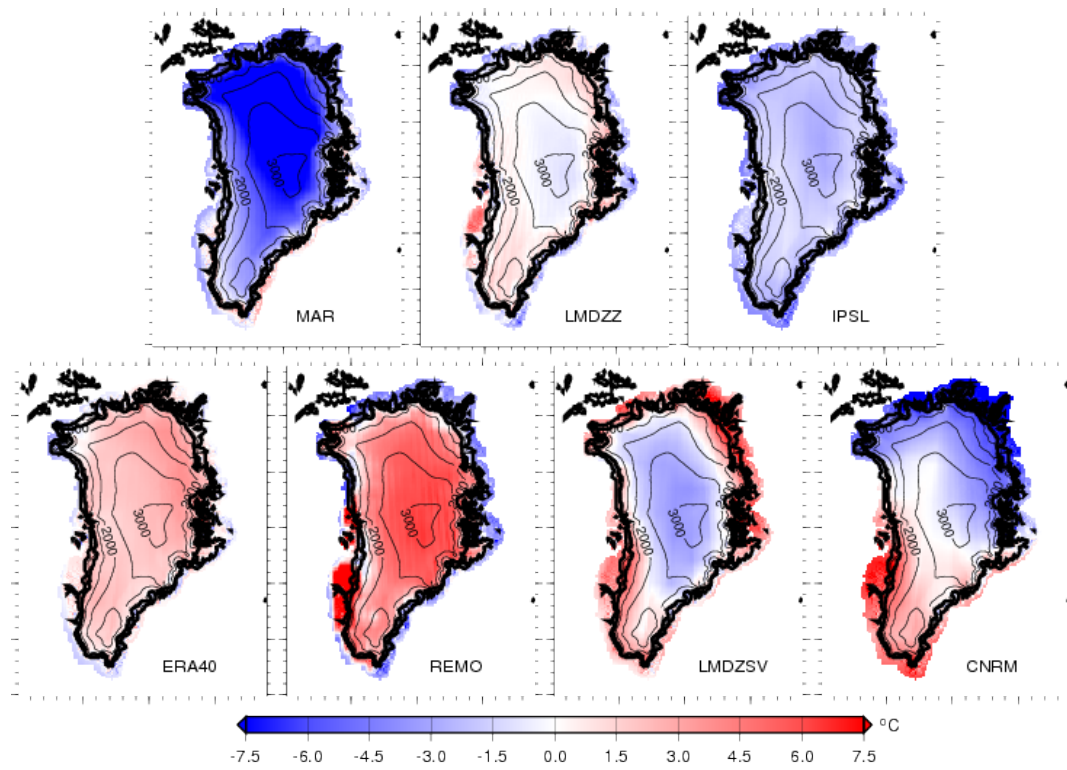


Fig. 3. Differences between each individual atmospheric dataset and FE09 dataset for the July near surface air temperature (in °C).