

Interactive comment on “Spatial analyses of thermokarst lakes and basins in Yedoma landscapes of the Lena Delta” by A. Morgenstern et al.

A. Morgenstern et al.

anne.morgenstern@awi.de

Received and published: 13 September 2011

We thank both referees for the thorough revision of our manuscript and their constructive comments that helped to improve the paper. Please see the supplement for our detailed reply to the reviewer comments.

Please also note the supplement to this comment:

<http://www.the-cryosphere-discuss.net/5/C938/2011/tcd-5-C938-2011-supplement.pdf>

Interactive comment on The Cryosphere Discuss., 5, 1495, 2011.

C938

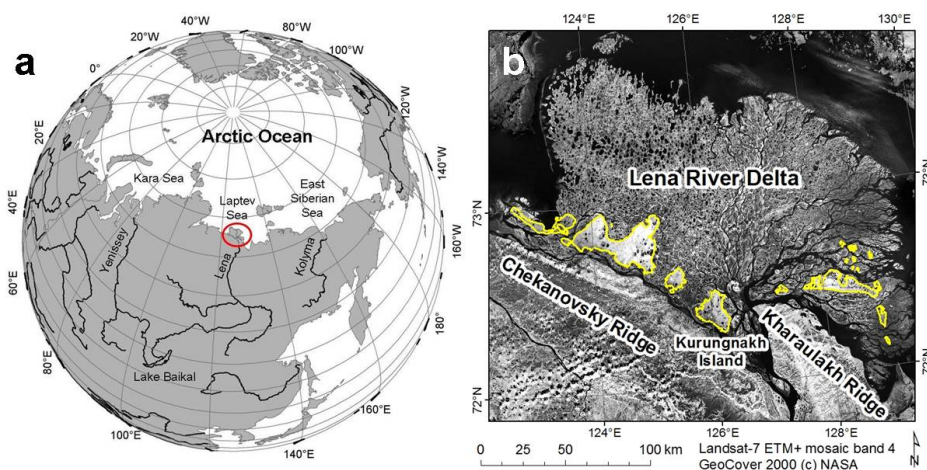


Fig. 1. Figure 1

C939

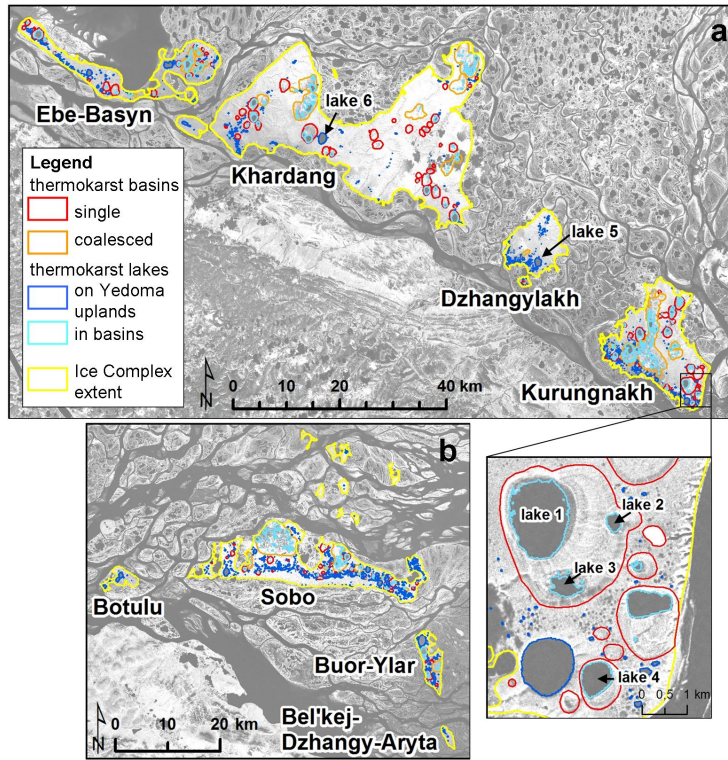


Fig. 2. Figure 4

C940

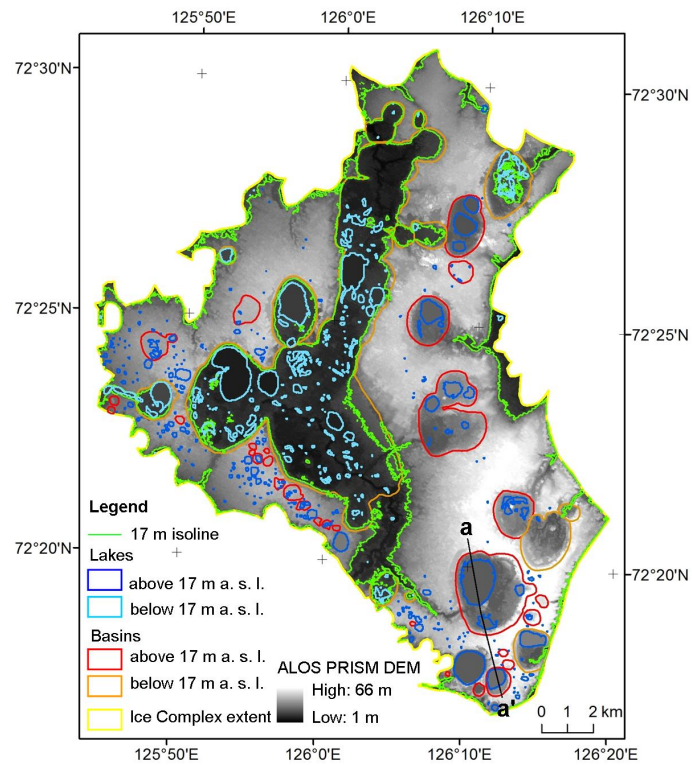


Fig. 3. Figure 10

C941

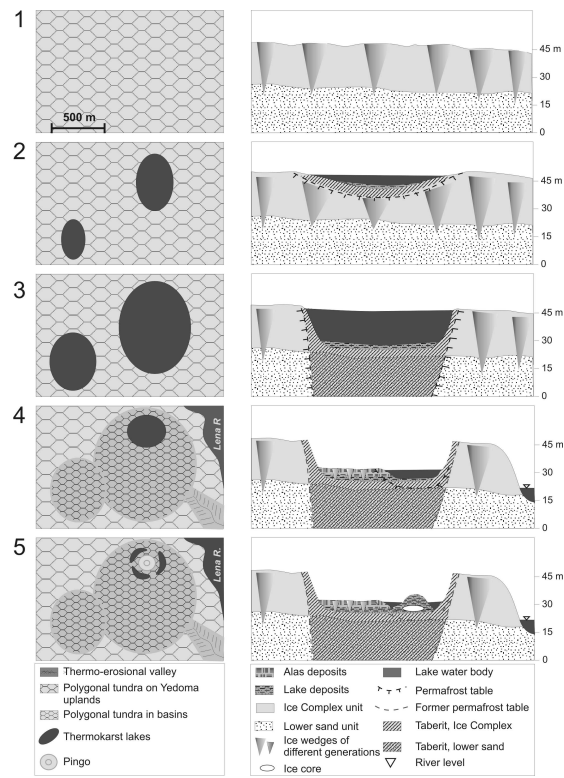


Fig. 4. Figure 13

C942