

## ***Interactive comment on “Modelling the temperature evolution of permafrost and seasonal frost in southern Norway during the 20th and 21st century” by T. Hipp et al.***

**T. Hipp et al.**

tobias.hipp@geo.uio.no

Received and published: 20 June 2011

The original Figures 2, 6 and 7 (now 2, 5 and 6) were renumbered and modified during the review process. These figures are presented below.

Interactive comment on The Cryosphere Discuss., 5, 811, 2011.

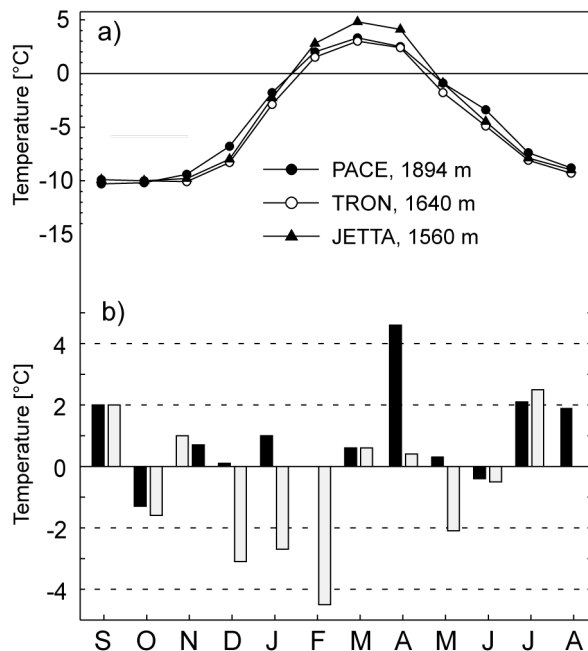
Full Screen / Esc

Printer-friendly Version

Interactive Discussion

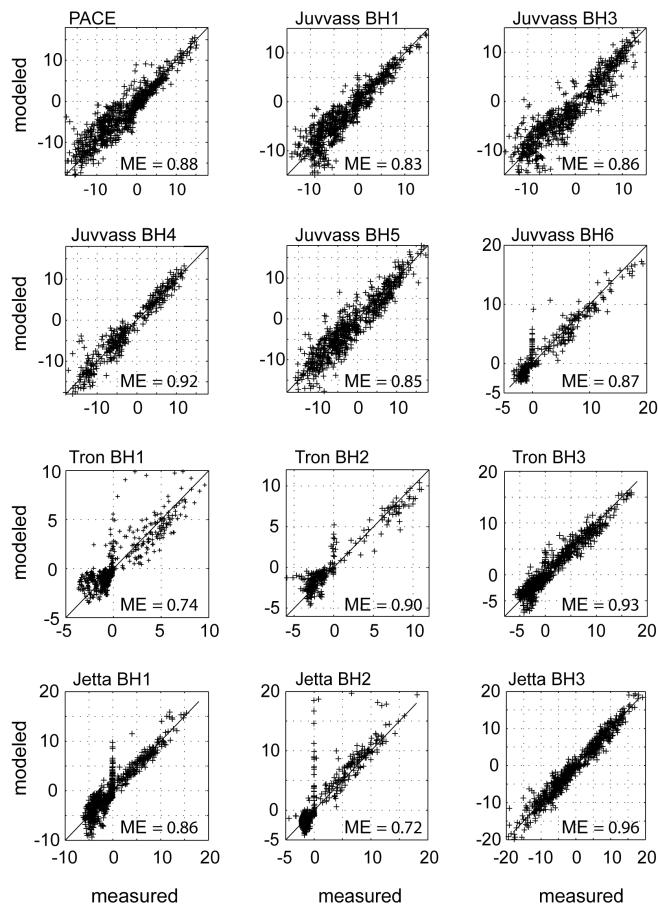
Discussion Paper



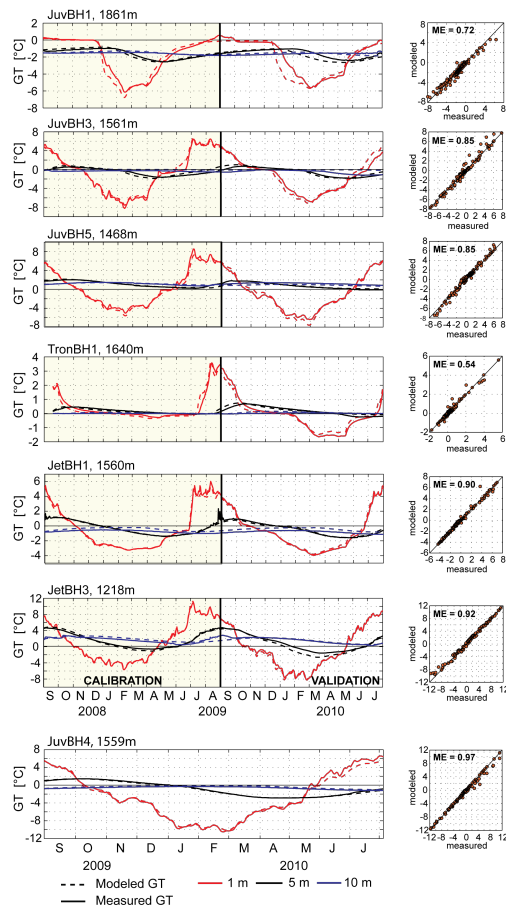


**Fig. 1.** Fig. 2. (a) Mean monthly air temperature for PACE borehole, Tro-BH1 and Jet-BH1 during the last normal period 1961-1990. (b) Monthly deviation to the normal 1961-1990 at the PACE borehole for S1 (black)

[Full Screen / Esc](#)[Printer-friendly Version](#)[Interactive Discussion](#)[Discussion Paper](#)



**Fig. 2.** Fig. 5. Correlation between modelled and measured GST at all borehole sites during 2008-2010. Average n-factors of S1 and S2 to model the entire period 2008-2010. Good correlations are found at all si



**Fig. 3.** Fig. 6. Measured (solid lines) and modelled (dashed lines) ground temperatures (GT) at 1 m (red), 5 m (black) and 10 m (blue) depth during the calibration (S1) and the validation period (S2) (left pan