

Interactive comment on “Modelling the temperature evolution of permafrost and seasonal frost in southern Norway during the 20th and 21st century” by T. Hipp et al.

T. Hipp et al.

tobias.hipp@geo.uio.no

Received and published: 20 June 2011

The original Figures 2, 6 and 7 (now 2, 5 and 6) were renumbered and modified during the review process. These figures are presented below.

Interactive comment on The Cryosphere Discuss., 5, 811, 2011.

C612

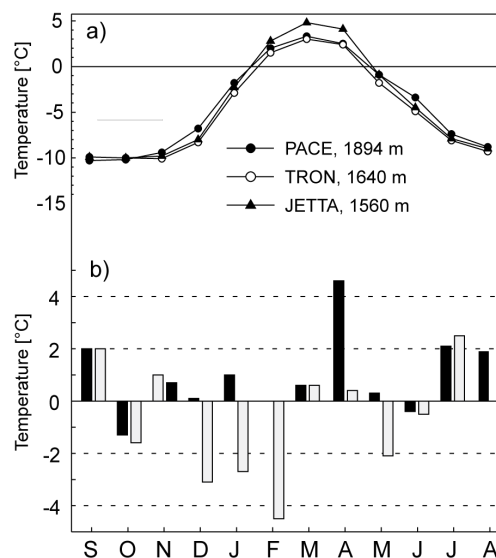


Fig. 1. Fig. 2. (a) Mean monthly air temperature for PACE borehole, Tro-BH1 and Jet-BH1 during the last normal period 1961-1990. (b) Monthly deviation to the normal 1961-1990 at the PACE borehole for S1 (black bars)

C613

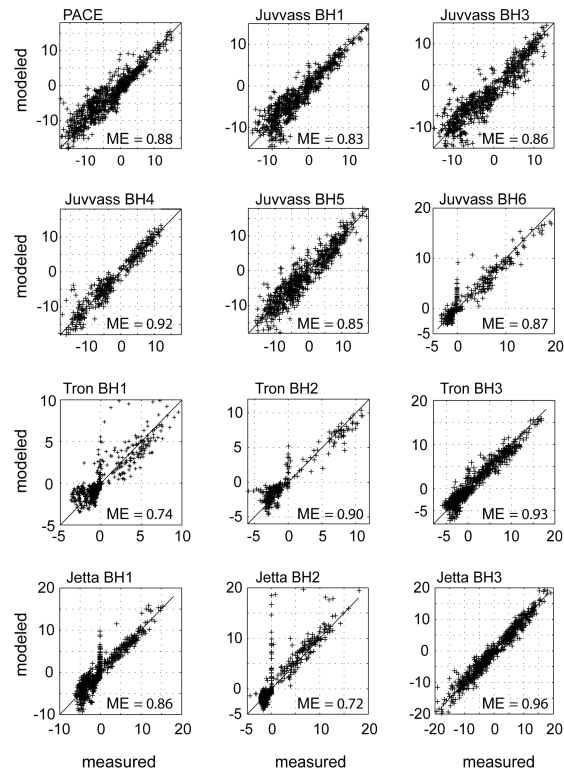


Fig. 2. Fig. 5. Correlation between modelled and measured GST at all borehole sites during 2008-2010. Average n-factors of S1 and S2 to model the entire period 2008-2010. Good correlations are found at all si

C614

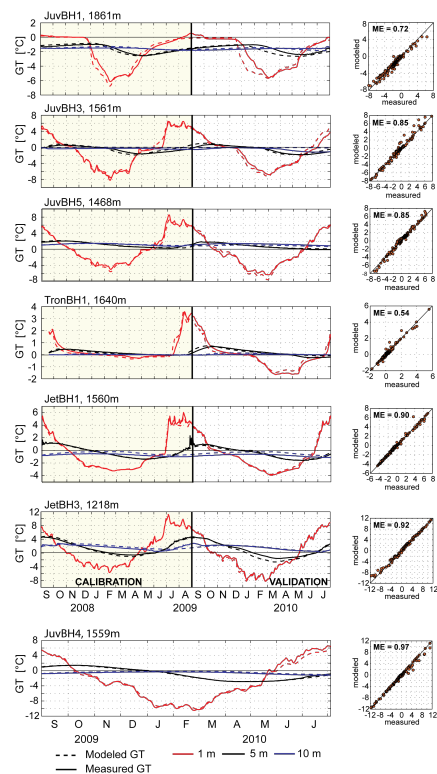


Fig. 3. Fig. 6. Measured (solid lines) and modelled (dashed lines) ground temperatures (GT) at 1 m (red), 5 m (black) and 10 m (blue) depth during the calibration (S1) and the validation period (S2) (left pan

C615