

Interactive comment on “An assessment of uncertainties in using volume-area modelling for computing the twenty-first century glacier contribution to sea-level change” by A. B. A. Slangen and R. S. W. van de Wal

A. B. A. Slangen and R. S. W. van de Wal

a.slangen@uu.nl

Received and published: 9 June 2011

Dear Mr Raup,

Thank you for your suggestions.

I agree with you that the pie charts are difficult to compare to each other. I have therefore made bar charts instead, in which I combine the two pie charts. The regions are ordered according to Table 1, and therefore not sorted by size.

I'll attach the new Figure 1 here as an example. Figs. 6 and 8 will be changed similarly.

C588

Full Screen / Esc

Printer-friendly Version

Interactive Discussion

Discussion Paper



Kind regards, Aimée Slangen

Interactive comment on The Cryosphere Discuss., 5, 1655, 2011.

TCD

5, C588–C590, 2011

Interactive
Comment

Full Screen / Esc

Printer-friendly Version

Interactive Discussion

Discussion Paper

C589



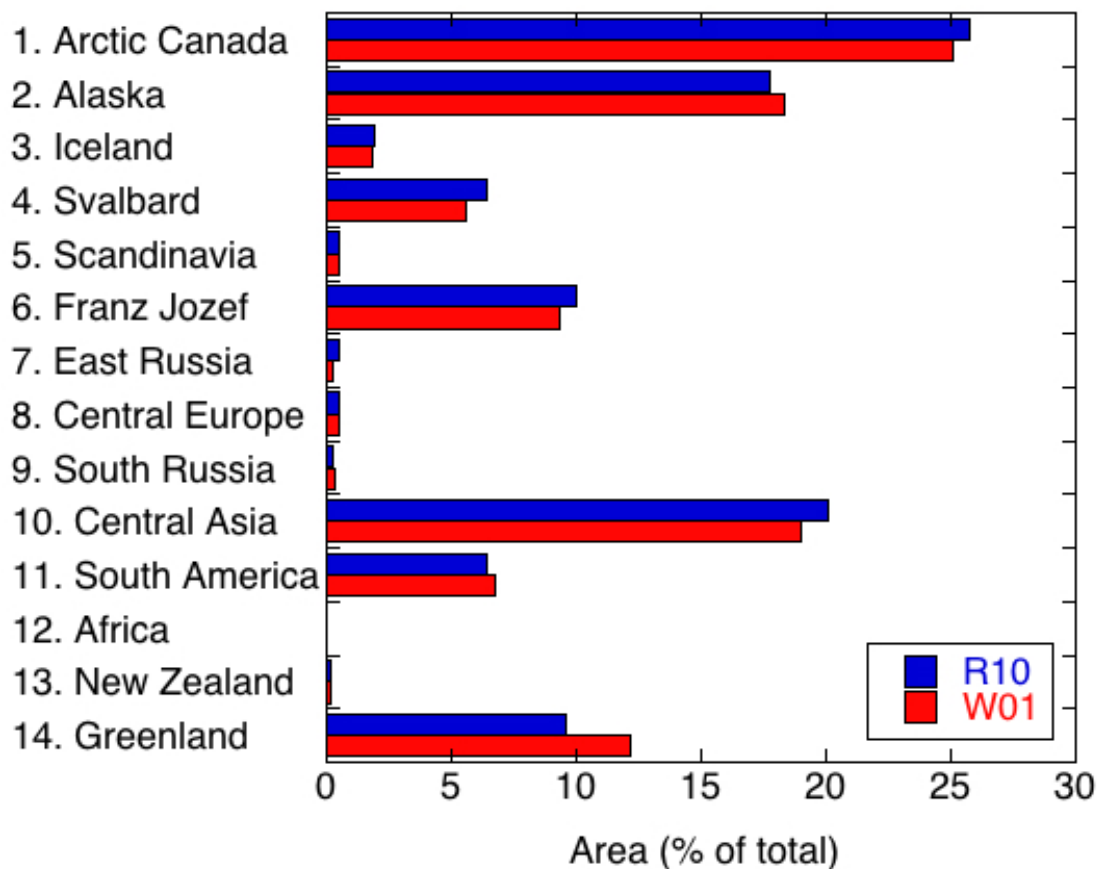
[Interactive
Comment](#)

Fig. 1. New figure 1 (combines old 1a and 1b)

[Full Screen / Esc](#)[Printer-friendly Version](#)[Interactive Discussion](#)[Discussion Paper](#)