

Interactive comment on “Seasonal variations of glacier dynamics at Kronebreen, Svalbard revealed by calving related seismicity” by A. Köhler et al.

A. Köhler et al.

andreas.kohler@geo.uio.no

Received and published: 28 February 2012

As stated in our review response, Figures 3 and 6 appear small in the paper due to the page format of discussion papers and long text in the captions. Here, we show larger versions of these figures.

Interactive comment on The Cryosphere Discuss., 5, 3291, 2011.

C2029

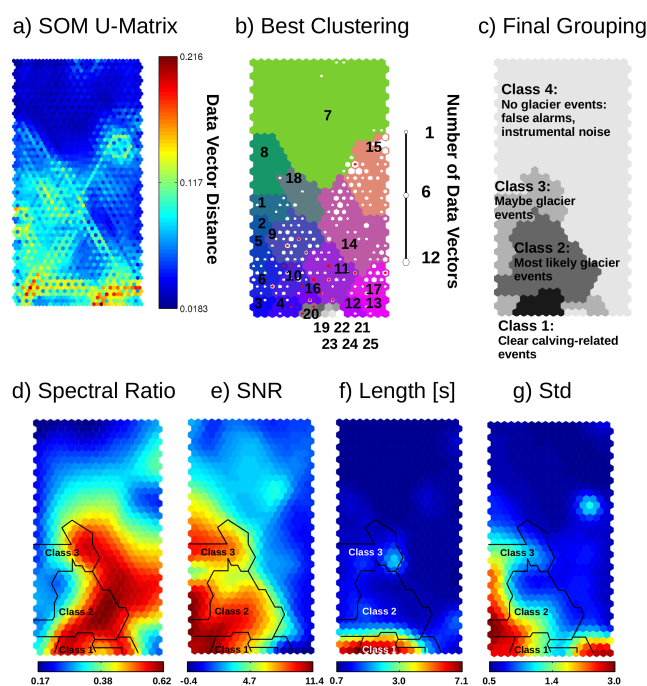


Fig. 1. Larger version of Figure 3

C2030

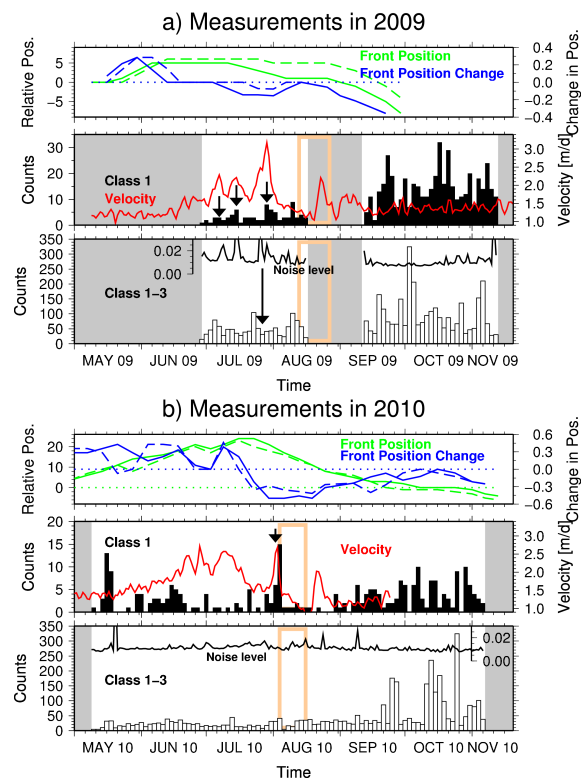


Fig. 2. Larger version of Figure 6 (former Figure 5)