

**Application of mobile  
laser scanning in  
snow cover profiling**

S. Kaasalainen et al.

This discussion paper is/has been under review for the journal The Cryosphere (TC).  
Please refer to the corresponding final paper in TC if available.

***Brief Communication***  
**“Application of mobile laser scanning in  
snow cover profiling”**

**S. Kaasalainen<sup>1</sup>, H. Kaartinen<sup>1</sup>, A. Kukko<sup>1</sup>, K. Anttila<sup>1,2</sup>, and A. Krooks<sup>1</sup>**

<sup>1</sup>Finnish Geodetic Institute, Masala, Finland

<sup>2</sup>Finnish Meteorological Institute, Helsinki, Finland

Received: 28 October 2010 – Accepted: 23 November 2010 – Published: 30 November 2010

Correspondence to: S. Kaasalainen (sanna.kaasalainen@fgi.fi)

Published by Copernicus Publications on behalf of the European Geosciences Union.

Title Page

Abstract

Introduction

Conclusions

References

Tables

Figures

◀

▶

◀

▶

Back

Close

Full Screen / Esc

Printer-friendly Version

Interactive Discussion



## Abstract

We present a snowmobile based mobile mapping system and its first application on snow cover roughness and change detection measurement. The ROAMER mobile mapping system, constructed at the Finnish Geodetic Institute, consists of the positioning and navigating systems, a terrestrial laser scanner, and the carrying platform (a snowmobile sledge in this application). We demonstrate the applicability of the instrument in snow cover roughness profiling and change detection by presenting preliminary results from a mobile laser scanning (MLS) campaign. The results show the potential of MLS for fast and efficient snow profiling from large areas in a millimetre scale.

## 1 Introduction

There has been an increasing interest in vehicle based (mobile) applications of laser scanning in the recent years. The applications to environmental remote sensing have thus far been focused on vegetation studies and hydrology (Barber and Mills, 2007), while a number of applications have been presented for road and traffic monitoring (Kukko et al., 2007 and refs. therein). In mobile laser scanning, a terrestrial laser scanner (TLS), a global positioning system (GPS) receiver, and an inertial measurement unit (IMU) are implemented in a vehicle based (mobile) platform (mostly a car, but there have also been applications using boats, snow mobiles, and all terrain vehicles). Typically, the scanner operates in a two-dimensional profiling mode, and the third dimension is created while the vehicle moves. MLS systems are capable of faster and more efficient 3-D data acquisition than the traditional stationary TLS, especially in cases where ground validation (e.g., small scale details) is needed for, e.g., airborne experiments or in the areas covered by Earth observing satellites (see Kaasalainen et al., 2008; Connor et al., 2009).

Snow roughness measurements are sparse in spite of their importance for, e.g., radar remote sensing (Rees and Arnold, 2006) and snow reflectance modelling (Warren et al., 1998). Thus far, snow surface roughness measurements have been

## Application of mobile laser scanning in snow cover profiling

S. Kaasalainen et al.

Title Page

Abstract

Introduction

Conclusions

References

Tables

Figures



Back

Close

Full Screen / Esc

Printer-friendly Version

Interactive Discussion



mostly based on field techniques (e.g., photography) or airborne laser scanning (Rees, 1998; Rees and Arnold, 2006; Höfle et al., 2007). Terrestrial laser based profiling has also been tested, even on a moving platform, but without the orientation information from the IMU, which lead into correction of mixed signals from the snow mobile movement and actual surface roughness (Lacroix et al., 2008 and see this reference for a review of snow roughness measurements and results).

Laser-based methods have also been used validation of air and satellite radar measurements of snow cover. As the satellite based SAR has a global coverage, the higher accuracy provided by laser scanning can be used in validation and ground truth for satellite measurements (e.g., Connor et al., 2009). TLS has been found a potential technology for snow depth measurement in, e.g., avalanche regions (Prokop, 2008). Mobile laser scanning could also provide validation for SAR-based snow covered area estimation, especially in forested areas, where the snow forest interaction is increasingly important for hydrological and climate models (e.g., Luoju et al., 2009).

## 2 Methods and study site

A mobile road environment mapping system called ROAMER (Kukko et al., 2007; Kukko, 2009) was used for the mobile measurements. The FGI in-house developed ROAMER-system consists of a FARO Photon™ 120 terrestrial laser scanner and NovAtel SPAN™ positioning system (NovAtel DL-4 plus GPS-receiver, NovAtel GPS-702 antenna and Honeywell HG1700 AG58 inertial measurement unit). The FARO scanner is a continuous wave, 785 nm terrestrial laser scanner. It uses a phase modulation technique for distance measurement and has an unambiguity range of approximately 153 m. The distance measurement error is 2 mm at 25 m. The beam size is 3.3 mm at exit and the beam divergence is 0.16 mrad. For snow cover mapping, the point measurement frequency was 244 kHz and scanning frequency 49 Hz. For georeferencing of the laser data, continuous GPS observations are logged at 1 Hz and IMU data at 100 Hz intervals to track the carrier vehicle movements. The navigation data are

### Application of mobile laser scanning in snow cover profiling

S. Kaasalainen et al.

Title Page

Abstract

Introduction

Conclusions

References

Tables

Figures



Back

Close

Full Screen / Esc

Printer-friendly Version

Interactive Discussion



5 computed in post-processing to solve the scanner trajectory (attitudes and position) at a resolution of 1/100 sec. With the computed trajectory and time synchronization information each measured laser point is transformed into a global coordinate system and further to a local map grid system. Prior to detailed surface analysis, filtering methods  
10 need to be applied to the georeferenced point data to remove stray and sky points, and noise caused by direct sunlight into the scanner head. Geometric quality control of the mobile data, and the possible adjustment/correction for systematic errors, is an essential phase to get reliable analysis, especially in change detection studies between different data sets. Therefore, Virtual Reference Station (VRS) GPS measurements  
15 and additional TLS scans would provide a reasonable way for geometric validation of MLS data.

The MLS on a snowmobile presented in this communication was carried out in March 2010 in Sodankylä, The Finnish Meteorological Institute Arctic Research Centre (67.4 N, 26.6 E). The experiments were a part of the Snow Reflectance Transition  
20 Experiment (SNORTEX) campaign supported by the EUMETSAT and meteorological institutes. A more detailed description of the campaign site is provided in Roujean et al., 2009. Some test runs with the snow mobile system were carried out in 2009 with a so-called stop-and-go mode and stationary TLS measurements. Stationary TLS has also been applied for snow cover measurement in our previous research (Kaasalainen  
25 et al., 2008). Figure 1 presents the measurement setup on the snowmobile sledge and the measurement trajectory in 22 March. Mobile data were collected on four days, one acquisition run per day. The first three runs were at different locations, but the fourth run (length 11.5 km, see Fig. 1) also covered two of the earlier runs. At snowmobile velocity of 3 m/s the scanning of the 11.5 km leg took approximately 65 min, and the time required for GPS/IMU initialization was about 1 h.

A snowfall occurred before the fourth run; the increase was 6 cm according to FMI's automatic snow depth monitor. The average velocity of the snowmobile was about 3 m/s, resulting in 16 profiles per 1 m. VRS-GPS (Leica SR530 + AT502) was used to measure control points along the snowmobile track: route sign pole tops, corners

---

## Application of mobile laser scanning in snow cover profiling

S. Kaasalainen et al.

---

[Title Page](#)[Abstract](#)[Introduction](#)[Conclusions](#)[References](#)[Tables](#)[Figures](#)[Back](#)[Close](#)[Full Screen / Esc](#)[Printer-friendly Version](#)[Interactive Discussion](#)

of signs, bridge railing and asphalt points. These points were used for controlling the MLS data quality between different scanning runs.

### 3 Results

Examples of surface profiles from the ROAMER measurements in 18 March and 22 March are presented in Figs. 2 and 3. Although the absolute repeatability (precision) of the measurements can be several centimetres (caused by the positioning error of the GPS/IMU solution, see Kukko et al., 2007 for more details), the relative accuracy is good enough in representing the mm-scale changes in the surface shape. This is visible in the data in Fig. 3. Figure 2 also illustrates the efficiency of the method: continuous surface profiling along the track is available in the entire 11.5 km trajectory. To assess the accuracy and repeatability of the distance measurement we analyzed a measurement of 212 profiles taken in the same spot, i.e., while the snow mobile was not moving. The standard deviation of the average of the 212 corresponding points from each profile increased linearly as a function of distance from about 0.7 mm at 3 m to about 2 mm in 11 m, which indicates that the system is capable of distinguishing the surface roughness features in the (sub)millimetre scale.

The increase in snow depth is visible in Fig. 3, where laser profiles from 18 March and 22 March measurements have been combined. The difference between snow levels in the images is 6–8 cm, which also points out the feasibility of the instrument in snow cover change detection and measuring relative differences in the snow surface.

For flat surfaces, scanning data can be acquired from up to 20–30 m (cross-track distance) from the scanner, as the backscattered laser energy from the (snow) surface decreases rapidly as the beam incidence angle increases. Also the spatial distribution of the points becomes unfavourable as the range extends. With the scanning parameters in this experiment (244 kHz point measurement and 49 Hz scanning frequency), the cross-track point spacing in the profile on the snow surface is less than a centimetre at ranges below 5 m, and equals to the approximate (along track) profile spacing of 4–6 cm at 10–15 m.

## Application of mobile laser scanning in snow cover profiling

S. Kaasalainen et al.

Title Page

Abstract

Introduction

Conclusions

References

Tables

Figures



Back

Close

Full Screen / Esc

Printer-friendly Version

Interactive Discussion



## 4 Conclusions

In this communication, we introduce a mobile laser scanning application that it is capable of efficiently retrieving snow roughness (parameters) over large areas from centimetre to millimetre scale, as well as snow surface change detection. This is to our knowledge the first application of vehicle based (mobile) laser scanning in the context of cryospheric studies (especially as the environmental applications of mobile laser scanning in general have thus far been limited). The mobile mapping approach provides better possibilities for statistical analysis of snow surface roughness and its impact on surface albedo than the traditional (field) methods, which are labour intensive and spatially limited. The future work will focus on improving the efficiency of the measurement and data processing, and improved synergy between other data sources (such as airborne and field techniques), to provide reference data and ground truth for airborne and satellite applications.

*Acknowledgements.* The authors are grateful to the SNORTEX colleagues and the staff members of FMI-ARC, especially the snowmobile drivers, J. Mattanen and J. Suokanerva. We also want to thank Y. Chen at the FGI for help with the ROAMER. This study was financially supported by the Academy of Finland (project “New techniques in active remote sensing: hyperspectral laser in environmental change detection”).

## References

- Barber, D. M. and Mills, J. P.: Vehicle based waveform laser scanning in a coastal environment, *Int. Arch. Photogramm. Remote Sens.*, 36, C55, available at: <http://www.isprs.org/proceedings/XXXVI/5-C55/www.cirgeo.unipd.it/cirgeo/convegni/mmt2007/proceedings/index.html>, 2007.
- Connor, L. N., Laxon, S. W., Ridout, A. L., Krabill, W. B., and McAdoo, D. C.: Comparison of Envisat radar and airborne laser altimeter measurements over Arctic sea ice, *Remote Sens. Environ.*, 113, 563–570, 2009.
- Höfle, B., Geist, T., Rutzinger, M., and Pfeifer, N.: Glacier surface segmentation using airborne laser scanner point cloud and intensity data, *Int. Arch. Photogramm. Remote Sens. Spat. Inf. Sci.*, 36, 95–200, 2007.

## Application of mobile laser scanning in snow cover profiling

S. Kaasalainen et al.

Title Page

Abstract

Introduction

Conclusions

References

Tables

Figures



Back

Close

Full Screen / Esc

Printer-friendly Version

Interactive Discussion



- Kaasalainen, S., Kaartinen, H., and Kukko, A.: Snow cover change detection with laser scanning range and brightness measurements, *EARSeL eProceedings*, 7, 133–141, 2008.
- Kukko, A., Andrei, C.-O., Salminen, V.-M., Kaartinen, H., Chen, Y., Rönholm, P., Hyypä, H., Hyypä, J., Chen, R., Haggrén, H., Kosonen, I., and Capek, K.: Road Environment Mapping System of the Finnish Geodetic Institute – FGI Roamer, *Int. Arch. Photogramm. Remote Sens.*, 36, 241–247, 2007.
- Kukko, A.: Road Environment Mapper – 3-D data capturing with mobile mapping, Helsinki University of Technology, Lic. Tech. Thesis, 2009.
- Lacroix, P., Legrésy, B., Langley, K., Hamran, S. E., Kohler, J., Roques, S., Rémy, F., and Dechambre, M.: In situ measurements of the snow surface roughness using a laser profiler, *J. Glaciol.*, 54, 753–762, 2008.
- Luojus, K. P., Pulliainen, J. T., Metsämäki, S. J., and Hallikainen, M. T.: Enhanced SAR-based snow-covered area estimation method for Boreal forest zone, *IEEE Trans. Geosci. Remote Sens.*, 47, 922–935, 2009.
- Prokop, A.: Assessing the applicability of terrestrial laser scanning for spatial snow depth measurements, *Cold Regions Sci. Tech.*, 54, 155–163, 2008.
- Rees, W. G.: Correspondence: A rapid method for measuring snow surface profiles, *J. Glaciol.*, 44, 674–675, 1998.
- Rees, W. G. and Arnold, N. S.: Scale-dependent roughness of a glacier surface: implications for radar backscatter and aerodynamic roughness modelling, *J. Glaciol.*, 52, 214–222, 2006.
- Roujean, J.-L., Manninen, T., Kontu, A., Peltoniemi, J., Hauteceur, O., Riihelä, A., Lahtinen, P., Siljamo, N., Suokanerva, H., Sukuvaara, T., Kaasalainen, S., Aulamo, O., Aaltonen, V., Thölix, L., Karhu, J., Suomalainen, J., Hakala, T., and Kaartinen, H.: SNORTEX (Snow Reflectance Transition Experiment): Remote sensing measurement of the dynamic properties of the boreal snow-forest in support to climate and weather forecast: report of IOP-2008, *IGARSS 2009*, 2, 859–862, 2009.
- Warren, S. G., Brandt, R. E., and O’Rawe Hinton, P.: Effect of surface roughness on bidirectional reflectance of Antarctic snow, *J. Geophys. Res. E*, 103, 25789–25807, 1998.

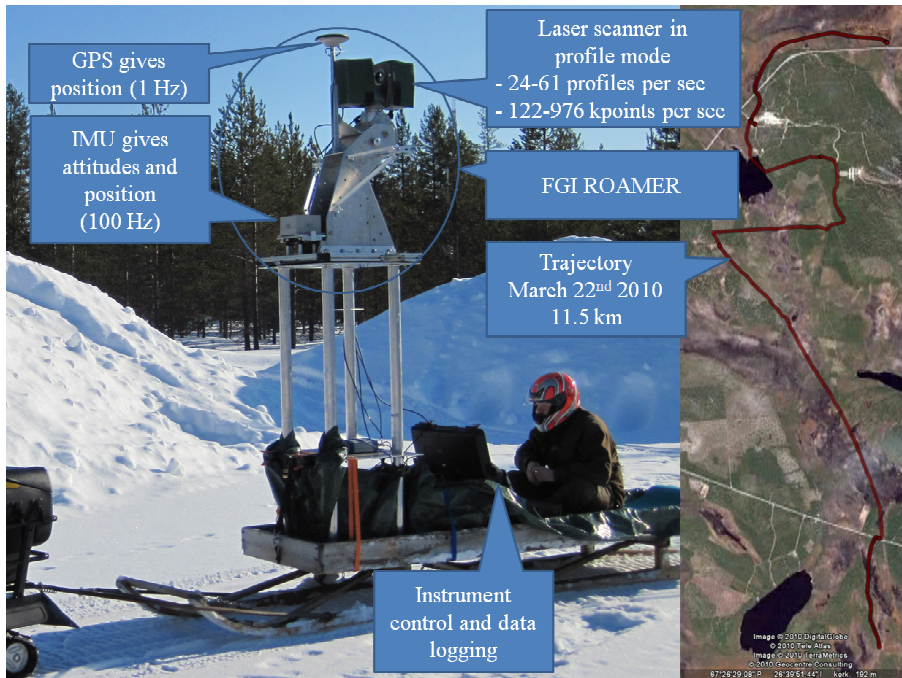
---

## Application of mobile laser scanning in snow cover profiling

S. Kaasalainen et al.

---

[Title Page](#)[Abstract](#)[Introduction](#)[Conclusions](#)[References](#)[Tables](#)[Figures](#)[◀](#)[▶](#)[◀](#)[▶](#)[Back](#)[Close](#)[Full Screen / Esc](#)[Printer-friendly Version](#)[Interactive Discussion](#)



**Fig. 1.** Left: the ROAMER mobile laser scanning system mounted on the snowmobile sledge. Right: the trajectory of the 22 March measurements.

**Application of mobile laser scanning in snow cover profiling**

S. Kaasalainen et al.

Title Page

Abstract Introduction

Conclusions References

Tables Figures

◀ ▶

◀ ▶

Back Close

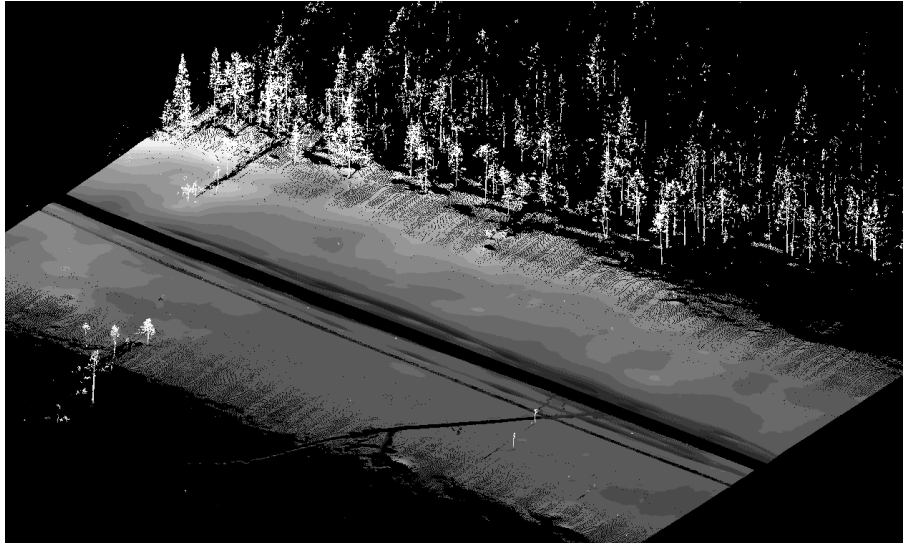
Full Screen / Esc

Printer-friendly Version

Interactive Discussion







**Fig. 2.** Example of an MLS data block from the test site. Grey tones denote the surface elevation. Snow mobile track and the shadow of the laser sensor split the data in the middle. Continuous profiling along the track is possible over the entire 11.5 km study area.

**Application of mobile laser scanning in snow cover profiling**

S. Kaasalainen et al.

Title Page

Abstract Introduction

Conclusions References

Tables Figures

◀ ▶

◀ ▶

Back Close

Full Screen / Esc

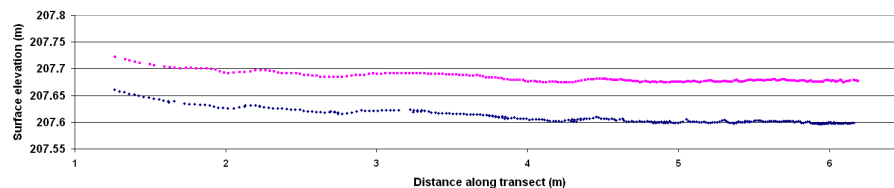
Printer-friendly Version

Interactive Discussion



**Application of mobile laser scanning in snow cover profiling**

S. Kaasalainen et al.



**Fig. 3.** Snow surface roughness from 18 March (blue) and 22 March (pink graph) MLS profiles. The roughness graphs are plotted along the profile, the first point (in the right end of the profile) is at the distance of 3.95 m from the scanner.

Title Page

Abstract

Introduction

Conclusions

References

Tables

Figures

◀

▶

◀

▶

Back

Close

Full Screen / Esc

Printer-friendly Version

Interactive Discussion

