

This discussion paper is/has been under review for the journal The Cryosphere (TC).
Please refer to the corresponding final paper in TC if available.

**Ikaite discovered in
Arctic sea ice**

G. S. Dieckmann et al.

Brief communication: ikaite ($\text{CaCO}_3 \cdot 6\text{H}_2\text{O}$) discovered in Arctic sea ice

**G. S. Dieckmann¹, G. Nehrke¹, C. Uhlig¹, J. Göttlicher², S. Gerland³,
M. A. Granskog³, and D. N. Thomas⁴**

¹Alfred-Wegener-Institute for Polar and Marine Research, Am Handelshafen 12, 27570
Bremerhaven, Germany

²Forschungszentrum Karlsruhe in der Helmholtz-Gemeinschaft, Institut für
Synchrotronstrahlung, Hermann-von-Helmholtz-Platz 1, 76344 Eggenstein-Leopoldshafen,
Germany

³Norsk Polarinstitutt, Polarmiljøseneteret, 9296 Tromsø, Norway

⁴School of Ocean Sciences, Bangor University, Menai Bridge, Anglesey, LL59 5AB, UK

Received: 18 January 2010 – Accepted: 1 February 2010 – Published: 9 February 2010

Correspondence to: G. S. Dieckmann (gerhard.dieckmann@awi.de)

Published by Copernicus Publications on behalf of the European Geosciences Union.

Title Page

Abstract

Introduction

Conclusions

References

Tables

Figures

◀

▶

◀

▶

Back

Close

Full Screen / Esc

Printer-friendly Version

Interactive Discussion



Abstract

We report for the first time on the discovery of calcium carbonate crystals as ikaite ($\text{CaCO}_3 \cdot 6\text{H}_2\text{O}$) in sea ice from the Arctic (Kongsfjorden, Svalbard). This finding demonstrates that the precipitation of calcium carbonate during the freezing of sea ice is not restricted to the Antarctic, where it was observed for the first time in 2008. This finding is an important step in the quest to quantify its impact on the sea ice driven carbon cycle and should in the future enable improvement parametrization sea ice carbon models.

1 Introduction

Precipitation of calcium carbonate, during the formation of sea ice is considered fundamental in catalyzing chemical processes such as the boundary layer ozone depletion events (ODEs) (Sander et al., 2006; Piot and von Glasow, 2008; Sander and Morin, 2009), as well as the formation and subsequent draw down of CO_2 via brine drainage (Rysgaard, 2007, 2009). Furthermore, calcium carbonate found in firn off Talos Dome, Antarctica is thought to originate from sea ice and therefore could act as a proxy for sea ice cover (Sala et al., 2008). It has to be noted that until recently all these considerations were based on theoretical calculations and data from laboratory experiments. Obviously, due to the lack of direct confirmation of calcium carbonate precipitation in sea ice, estimates on its significance in the sea ice carbon cycle and consequently for polar or even global carbon budgets (Jones and Coote, 1981; Rysgaard et al., 2007, 2009) have been constrained. However, direct evidence of calcium carbonate precipitation based on field observations was obtained for the first time in 2008 (Dieckmann et al., 2008), after decades of controversial discussion on its possible existence. They isolated crystals from sea-ice collected at different locations in Antarctica and unambiguously identified them as ikaite, a hydrated calcium carbonate polymorph, by means of synchrotron based x-ray diffraction. Even though it is now known that mea-

TCD

4, 153–161, 2010

Ikaite discovered in Arctic sea ice

G. S. Dieckmann et al.

Title Page

Abstract

Introduction

Conclusions

References

Tables

Figures

◀

▶

◀

▶

Back

Close

Full Screen / Esc

Printer-friendly Version

Interactive Discussion



**Ikaite discovered in
Arctic sea ice**

G. S. Dieckmann et al.

sureable calcium carbonate precipitation occurs during the formation of sea ice, more data on the spatial and temporal occurrence is needed to estimate the impact of this phenomenon on the polar and global carbon cycle. Currently it is not clear whether ikaite is the only calcium carbonate polymorph forming in natural sea ice and we are not aware if this occurs in Arctic sea ice. From the rare observations in which ikaite has been found in the natural environment (e.g. Buchardt et al., 1997; Dahl and Buchardt, 2006; Omelon et al., 2001; Pauly, 1963), it appears that elevated phosphate concentrations play a crucial role in its formation. Therefore it had been speculated that the occurrence of ikaite in the Arctic is unlikely, since the phosphate concentrations in Arctic seawater are in general lower than in Antarctic seawater. Here we report for the first time on the occurrence of calcium carbonate, again in the form of ikaite, in sea ice from the Arctic (Kongsfjorden, Svalbard).

2 Methods

Sea ice samples were collected at four stations in Kongsfjorden, a fjord on Spitsbergen in the Svalbard archipelago, between 2 and 8 May, 2009 (Fig. 1). Inner Kongsfjorden is annually covered with first-year sea ice for several months (Gerland and Renner, 2007).

Seven cores were collected with a Mark III corer (Kovacs) and cut into sections of 4 cm beginning at the top. Alternatively, two samples were scraped off the sea ice surface. In both cases loose snow was first removed. Samples were stored in 1 liter plastic cans and allowed to melt in a refrigerator (+4 °C). During melting, samples were monitored and as soon as the remaining ice had melted, samples were filtered through 2.0 µm polycarbonate filters (Millipore). Filters were preserved in absolute alcohol and stored frozen (−20 °C) in small vials. They were subsequently transported on ice to the home laboratory where they were stored in a refrigerator until further processing a few weeks later. Parallel ice cores were taken to determine temperature and salinity. Temperature was recorded immediately after core removal at 5 cm intervals along the

[Title Page](#)[Abstract](#)[Introduction](#)[Conclusions](#)[References](#)[Tables](#)[Figures](#)[◀](#)[▶](#)[◀](#)[▶](#)[Back](#)[Close](#)[Full Screen / Esc](#)[Printer-friendly Version](#)[Interactive Discussion](#)

length of the core. Precipitates collected on the filters were used for qualitative investigations only. Subsamples were used for visualization under a binocular microscope while additional subsamples were investigated by X-ray diffraction and Ca K-edge X-ray absorption near edge (XANES) spectroscopy at the SUL-X beamline of the synchrotron radiation source ANKA of the Forschungszentrum Karlsruhe.

3 Results and discussion

All cores contained CaCO_3 crystals, but these could not be quantified and no clear stratification within the core was determined due to minute amounts found in most sections. Maximum visual concentrations were, however, observed in the upper core sections below the snow cover, a similar observation as was made in Antarctic sea ice cores (Dieckmann et al., 2008). Also the crystals had the same morphology as the Antarctic crystals, although they were less transparent (Fig. 2). This milky appearance was not observed directly after the samples were taken, but was visible after the samples had been transported to the home laboratory. Surprisingly no clear x-ray diffraction pattern could be obtained on these crystals, even though they had perfect crystal faces. In contrast to the sample treatment applied to the crystals discovered in Antarctic sea ice in 2007 (Dieckmann et al., 2008), the crystals collected on Svalbard were mistakenly stored in absolute ethanol (>99.9%), rather than in 50% ethanol. Ca K-edge XANES spectra obtained on the crystals match the ones for amorphous calcium carbonate as published in Michel et al. (2008). The apparent decomposition of the crystals into amorphous calcium carbonate in absolute ethanol is indicative of a water-containing compound, thus confirming the identification as ikaite on morphological grounds. As can be seen from Fig. 2c, some crystals show the six-sided appearance of the monoclinic morphology well known from inorganically precipitated ikaite crystals. This morphology was also observed in some of the crystals from Antarctic sea-ice (Dieckmann et al., 2008).

Due to the lack of quantitative data as well as supplementary details on the physical

Ikaite discovered in Arctic sea ice

G. S. Dieckmann et al.

Title Page

Abstract

Introduction

Conclusions

References

Tables

Figures

◀

▶

◀

▶

Back

Close

Full Screen / Esc

Printer-friendly Version

Interactive Discussion



and chemical conditions prior to the time of sampling it is not possible to determine the exact conditions that led to the formation of ikaite at this location. During the period of sampling, the sea ice temperature ranged from -1.8°C to -3.0°C and the air temperature from -3.7°C to 3.6°C . These temperatures lie well within the stability range for ikaite. The air temperature until the end of April was below 0°C , with average air temperatures in Ny-Ålesund being about -16°C in March and April. Based on this, the ice had only recently warmed up to the observed temperatures. The sea ice thickness in the samples area ranged from 43 to 64 cm, and the age of the ice can be estimated to about 2 to 2.5 months, being slightly older in the northern part and younger in the southern part of the inner fjord.

As mentioned earlier, elevated phosphate concentrations are considered to represent an important precondition in the formation of ikaite (besides low temperatures, $<4^{\circ}\text{C}$). The phosphate levels in the seawater in Kongsfjord range between almost zero ($0.2\ \mu\text{mol l}^{-1}$) in summer and over $1.1\ \mu\text{mol l}^{-1}$ in late winter when the fjord is still ice covered (Aguilera et al., 2002; Woelfel et al., 2009). During onset of sea ice formation, however, concentrations are at their lowest. Whether these concentrations, particularly the apparently low levels at the onset of sea ice formation are conducive to ikaite precipitation, needs to be investigated. The formation of ikaite is thus shown to occur not only in the Antarctic, but also in the Arctic. Although the results do not provide the temporal and spatial dimension of calcium carbonate formation in polar sea ice the findings are a crucial prerequisite on the way of further investigations regarding its role in the polar and global carbon cycles.

References

Aguilera, J., Bischof, K., Karsten, U., Hanelt, D., and Wiencke, C.: Seasonal variation in ecophysiological patterns in macroalgae from an Arctic fjord. II. Pigment accumulation and biochemical defence systems against high light stress, *Mar. Biol.*, 140, 1087–1095, doi:10.1007/s00227-002-0792-y, 2002.

Ikaite discovered in Arctic sea ice

G. S. Dieckmann et al.

Title Page

Abstract

Introduction

Conclusions

References

Tables

Figures

◀

▶

◀

▶

Back

Close

Full Screen / Esc

Printer-friendly Version

Interactive Discussion



**Ikaite discovered in
Arctic sea ice**

G. S. Dieckmann et al.

Title Page

Abstract

Introduction

Conclusions

References

Tables

Figures

◀

▶

◀

▶

Back

Close

Full Screen / Esc

Printer-friendly Version

Interactive Discussion



- Buchardt, B., Seaman, P., Stockmann, G., Vous, M., Wilken, U., Düwel, L., Kristiansen, A., Jenner, C., Whiticar, M. J., and Kristensen, R. M.: Submarine columns of ikaite tufa, *Nature*, 390, 129–130, doi:10.1038/36474, 1997
- Dahl, K. and Buchardt, B.: Monohydrocalcite in the Arctic Ikka Fjord, SW Greenland: First reported marine occurrence, *J. Sediment. Res.*, 76, 460–471, 2006.
- Dieckmann, G. S., Nehrke, G., Papadimitriou, S., Göttlicher, J., Steininger, R., Kennedy, H., Wolf-Gladrow, D., and Thomas, D. N.: Calcium carbonate as ikaite crystals in Antarctic sea ice, *Geophys. Res. Lett.*, 35, L08501, doi:10.1029/2008GL033540, 2008.
- Gerland, S. and Renner, A. H. H.: Sea ice mass balance monitoring in an Arctic fjord, *Ann. Glaciol.*, 46, 435–442, 2007.
- Jones, E. P. and Coote, A. R.: Oceanic CO₂ produced by the precipitation of CaCO₃ from brines in sea ice, *J. Geophys. Res.*, 86, 11041–11043, 1981.
- Michel, F. M., MacDonald, J., Feng, J., Phillips, B. L., Ehm, L., Tarabrella, C., Parise, J. B., and Reeder, R. J.: Structural Characteristics of Synthetic Amorphous Calcium Carbonate, *Chem. Mater.*, 20, 4720–4728, 2008.
- Omelson, C. R., Pollard, W. H., and Marion, G. M.: Seasonal formation of ikaite (CaCO₃*6H₂O) in saline spring discharge at Expedition Fiord, Canadian High Arctic: Assessing conditional constraints for natural crystal growth, *Geochim. Cosmochim. Acta*, 65, 1429–1437, 2001.
- Pauly, H.: “Ikaite” a new mineral from Greenland, *Arctic*, 16, 263–264, 1963.
- Rysgaard, S., Glud, R. N., Sejr, M. K., Bendtsen, J., and Christensen, P. B.: Inorganic carbon transport during sea ice growth and decay: A carbon pump in polar seas, *J. Geophys. Res.*, 112, C03016, doi:10.1029/2006JC003572, 2007.
- Rysgaard, S., Bendtsen, J., Pedersen, L. T., Ramløv, H., and Glud, R. N.: Increased CO₂ uptake due to sea ice growth and decay in the Nordic Seas, *J. Geophys. Res.*, 114, C09011, doi:10.1029/2008JC005088, 2009.
- Sander, R., Burrows, J., and Kaleschke, L.: Carbonate precipitation in brine – a potential trigger for tropospheric ozone depletion events, *Atmos. Chem. Phys.*, 6, 4653–4658, 2006, <http://www.atmos-chem-phys.net/6/4653/2006/>.
- Sander, R. and Morin, S.: Introducing the bromide/alkalinity ratio for a follow-up discussion on “Precipitation of salts in freezing seawater and ozone depletion events: a status report”, by Morin et al., published in *Atmos. Chem. Phys.*, 8, 7317–7324, 2008, *Atmos. Chem. Phys. Discuss.*, 9, 20765–20773, 2009, <http://www.atmos-chem-phys-discuss.net/9/20765/2009/>.

Woelfel, J., Schumann, R., Leopold, P., Wiencke, C., and Karsten, U.: Microphytobenthic biomass along gradients of physical conditions in Arctic Kongsfjorden, Svalbard Bot. Mar., 52(6), 573–583, 2009.

TCD

4, 153–161, 2010

**Ikaite discovered in
Arctic sea ice**

G. S. Dieckmann et al.

Title Page

Abstract

Introduction

Conclusions

References

Tables

Figures

◀

▶

◀

▶

Back

Close

Full Screen / Esc

Printer-friendly Version

Interactive Discussion



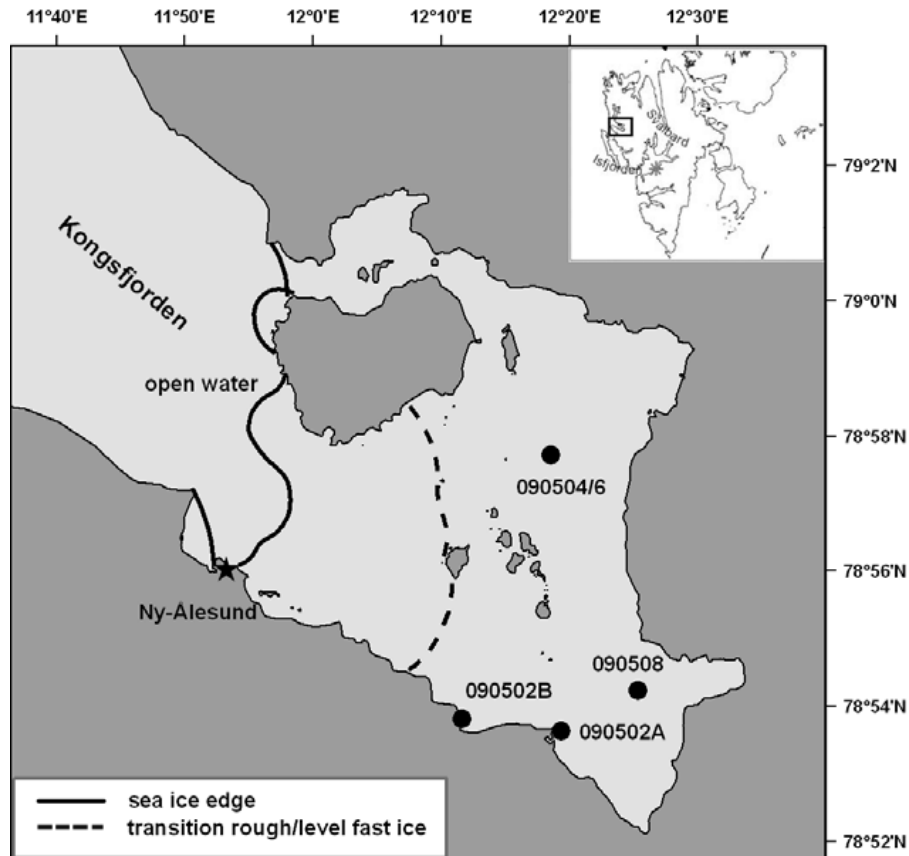


Fig. 1. Map showing sea ice stations in Kongsfjorden, Svalbard, in the vicinity of Ny-Ålesund. Solid line denotes the outer ice edge, and the dashed line indicates the outer edge of level first-year sea ice in the inner part of the fjord. Numbers denote day of sampling (yymmdd).

Ikaite discovered in Arctic sea ice

G. S. Dieckmann et al.

Title Page

Abstract

Introduction

Conclusions

References

Tables

Figures

◀

▶

◀

▶

Back

Close

Full Screen / Esc

Printer-friendly Version

Interactive Discussion



**Ikaite discovered in
Arctic sea ice**

G. S. Dieckmann et al.

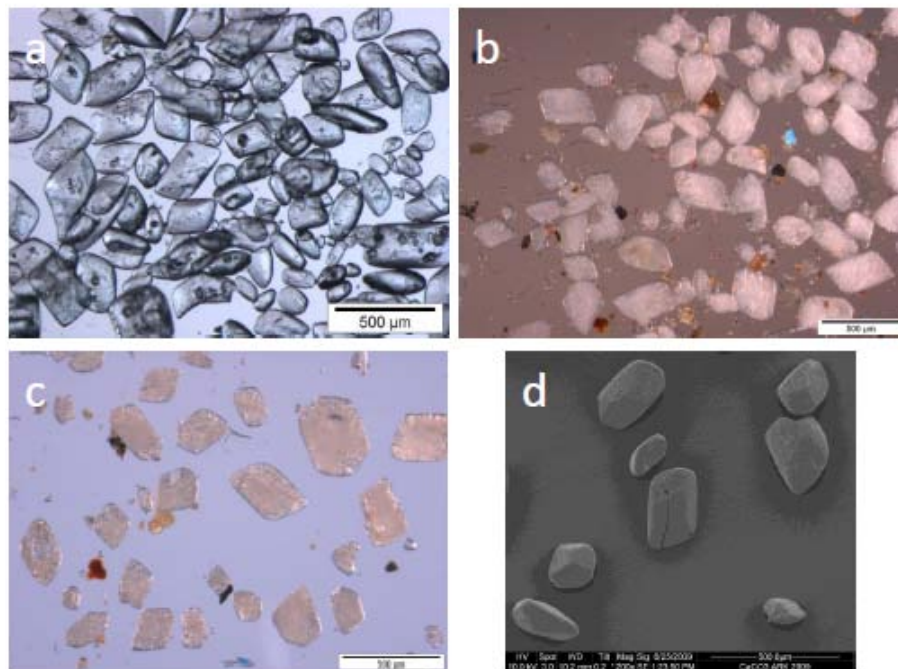


Fig. 2. Light microscopy image (a) of Ikaite crystals from Antarctic sea ice (Dieckmann et al., 2008). Light microscopy image (b and c) and scanning electron micrograph (d) of ikaite crystals from Kongsfjorden sea ice after transformation into amorphous calcium carbonate.

[Title Page](#)[Abstract](#)[Introduction](#)[Conclusions](#)[References](#)[Tables](#)[Figures](#)[I◀](#)[▶I](#)[◀](#)[▶](#)[Back](#)[Close](#)[Full Screen / Esc](#)[Printer-friendly Version](#)[Interactive Discussion](#)