

The Cryosphere Discussions is the access reviewed discussion forum of *The Cryosphere*

Reduced glacier sliding caused by persistent drainage

E. Magnússon et al.

Reduced glacier sliding caused by persistent drainage from a subglacial lake

E. Magnússon^{1,2}, H. Björnson¹, H. Rott², and F. Pálsson¹

¹Institute of Earth Sciences, University of Iceland, Sturlugata 7 – Askja, 101 Reykjavík, Iceland

²Inst. of Meteorology and Geophysics, University of Innsbruck, Innrain 52, 6020 Innsbruck, Austria

Received: 8 July 2009 – Accepted: 1 August 2009 – Published: 6 August 2009

Correspondence to: E. Magnússon (eyjolfm@raunvis.hi.is)

Published by Copernicus Publications on behalf of the European Geosciences Union.

Title Page

Abstract

Introduction

Conclusions

References

Tables

Figures



Back

Close

Full Screen / Esc

Printer-friendly Version

Interactive Discussion



Abstract

We present velocity observations of a glacier outlet in Vatnajökull, Iceland, deduced from interferometric SAR (InSAR) data obtained during the ERS1/2 tandem mission in 1995–2000. More than 50% decrease in glacier motion was observed subsequent to a large jökulhlaup from the subglacial lake Grímsvötn in 1996. The glacier had not reached its former flow rate in 2000. The jökulhlaup damaged the lake's ice-dam causing persistent drainage from the lake. InSAR based studies of water accumulation within Grímsvötn suggest that a leakage of $>3\text{ m}^3\text{ s}^{-1}$ prevailed throughout our study period. We suggest that the lake leakage kept open a tunnel at low water pressure underneath the whole length of the glacier. The tunnel flow drained water from its surroundings, hence lowering the water pressure of a distributed drainage system, underneath the upper and centre part of the glacier, which prior to the jökulhlaup sustained significant basal sliding. This is in accordance with theoretical prediction that tunnel flow in a steady state may cause slow-down in glacier motion by reducing the subglacial water pressure. The width of the affected areas was ~ 5 km on the upper part of the glacier and ~ 8 km on the centre part of the glacier. This indicates that the water pressure reduction propagates laterally from the tunnel over a distance of a few km.

1 Introduction

Variations in glacier motion through basal sliding are generally related to changes in the water pressure at the glacier bed (e.g. Paterson, 2006). These variations can be seasonal (e.g. Willis, 1995), diurnal (Iken, 1978; Bartholomäus et al., 2008) or related to short term events such as heavy rainfall (e.g. Sugiyama and Gudmundsson, 2004) and occasional glacier outburst floods (jökulhlaups) (e.g. Anderson et al., 2005). Studies relating water pressure and the ice motion commonly describe point measurements of GPS and simultaneous water pressure measurements at discrete boreholes (e.g.

TCD

3, 561–578, 2009

Reduced glacier sliding caused by persistent drainage

E. Magnússon et al.

Title Page

Abstract

Introduction

Conclusions

References

Tables

Figures

◀

▶

◀

▶

Back

Close

Full Screen / Esc

Printer-friendly Version

Interactive Discussion



Reduced glacier sliding caused by persistent drainageE. Magnússon et al.

[Title Page](#)[Abstract](#)[Introduction](#)[Conclusions](#)[References](#)[Tables](#)[Figures](#)[⏪](#)[⏩](#)[◀](#)[▶](#)[Back](#)[Close](#)[Full Screen / Esc](#)[Printer-friendly Version](#)[Interactive Discussion](#)

Sugiyama and Gudmundsson, 2004). Interferometric SAR (InSAR), providing a large-scale spatial overview of surface displacement, in combination with observed water discharge at the glacier margin (or other indirect information on the subglacial water flow), may provide information for exploring processes in the subglacial drainage system. This has been described by Magnússon et al. (2007), who studied changes in the ice motion of Vatnajökull, Iceland (Fig. 1), during jökulhlaups from subglacial lakes. The study revealed significant and widespread acceleration in the glacier motion during the initial phase of a jökulhlaup. Here the focus remains on the drainage from a subglacial lake and how it affects glacier motion, applying the ERS1/2 tandem data in 1995 to 2000 with 24 h repeat observations. We present velocity observations deduced from the InSAR data, which show significant and long-lasting reduction in glacier motion above the subglacial water course from the subglacial lake Grímsvötn subsequent to a large jökulhlaup in November 1996 that damaged the hydraulic seal of the lake ice dam leading to continuous leakage out of the lake (Björnsson, 2002). The leakage and the reduced glacier motion prevailed throughout our study period of four years. This may suggest that the continuous leakage took place through a tunnel at low water pressures (cf. Röthlisberger, 1972). The failure of the ice dam to seal the lake may have prevented the development of a distributed high pressure drainage system (cf. Kamb, 1987; Walder, 1986) downglacier from the lake, hence, reducing the sliding in the area.

2 Data and methods

Comprehensive InSAR data of Vatnajökull (Fig. 1) were obtained during the ERS1/2 tandem mission in 1995–2000. A repeat-pass satellite InSAR image reveals the difference in distance of the radar beam in the direction of radar illumination (also referred to as line of sight or LOS) between two radar images, acquired from two similar satellite positions (Hanssen, 2001). The relative change in LOS distance across the image is measured in terms of the phase difference of the radar beam in the two images.

Reduced glacier sliding caused by persistent drainage

E. Magnússon et al.

Title Page

Abstract

Introduction

Conclusions

References

Tables

Figures

◀

▶

◀

▶

Back

Close

Full Screen / Esc

Printer-friendly Version

Interactive Discussion



The phase difference includes contributions due to surface topography, surface motion and temporal changes of atmospheric propagation properties, mainly related to water vapour. In high latitudes with low water vapour content the atmospheric contribution is usually rather small. For motion analysis the topographic phase contribution needs to be subtracted. In our case this is achieved by calculating the topographic phase using an accurate digital elevation model (DEM) and knowing the precise position of the satellites (Hanssen, 2001). The surface velocity in LOS direction, v_{LOS} , over the time period Δt between two radar observations, is derived from the residual phase difference φ by using:

$$v_{\text{LOS}} = -\frac{\lambda\varphi}{4\pi\Delta t} \quad (1)$$

A phase shift of 2π (one colour-cycle (fringe) in Fig. 4) corresponds to relative change in the LOS-motion equal to half the radar wavelength ($\lambda/2 = 2.83$ cm for the ERS satellites). The contribution of three-dimensional surface motion, $\mathbf{V}=[v_e, v_n, v_u]$ (e, n and u stand for east, north and up), to the LOS-motion is given by:

$$v_e \cos \phi \sin \theta + v_n \sin \phi \sin \theta - v_u \cos \theta = v_{\text{LOS}} \quad (2)$$

where ϕ and θ are azimuth and angle of incidence (relative to a level surface) of the radar LOS.

The study focuses on two areas, the subglacial lake Grímsvötn (Fig. 4) and the glacier outlet Skeiðarárjökull (Fig. 2), underneath which water drains from the lake Grímsvötn. The InSAR data of Grímsvötn was topographically corrected with a DEM obtained in 1998 (Magnússon et al., 2005). For data obtained in 1995–1996 the DEM was modified based on GPS observations from that time. The upper part of the area, under which water from Grímsvötn drains (Fig. 2), was corrected with the DEM from 1998. For the lower part DEMs interpolated/extrapolated with time using DEMs from 1997 (Bacher et al., 1998) and 2004 (Berthier, 2005) were used. InSAR scenes of Skeiðarárjökull obtained during summers were corrected further to compensate for the impact of surface lowering due to ablation, using a degree day ablation model and

temperature from a weather station 20 km southeast of Skeiðarárjökull (data from the Icelandic Meteorological Office), projected with a temperature lapse-rate of $0.006^{\circ}\text{C m}^{-1}$. The remaining error in the derived LOS-motion, mostly due to temporal changes of atmospheric propagation properties, is estimated less than 1.9 cm (half a fringe).

5 Velocity fields of the glacier outlet Skeiðarárjökull are obtained from the InSAR data. First a reference velocity field (\mathbf{V}_{ref}) for the Skeiðarárjökull outlet (Fig. 2a) is deduced by combining LOS-motion (described by Eq. 2) derived from two ascending and two descending InSAR scenes with the mass continuity equation (Reeh et al., 2003; Magnússon et al., 2007). To calculate the velocity field at other times (Fig. 2b–e and Fig. 3) we use single InSAR scenes, showing 24 h LOS-motion, combined with the mass continuity equation and the horizontal flow direction from \mathbf{V}_{ref} (Magnússon et al., 2007).

10 The InSAR data are also used to obtain the net water accumulation within the lake Grímsvötn (Fig. 5). This is done by integrating the interpreted vertical motion of the floating part of Grímsvötn ice cover. Insignificant horizontal surface motion is expected within these lake areas. Counting the number of fringes within the floating part of the ice cover therefore reveals the approximate 24 h vertical motion. One fringe corresponds to vertical motion of ~ 3 cm in 24 h (derived from Eq. 2). The uncertainty in the volume estimates are due to possible errors in the interferograms, misinterpretation of horizontal motion as vertical, interpolation of data gaps, and possible subglacial melting of the floating ice cover, which is not separately monitored by InSAR.

3 Observations

3.1 Glacier surface velocity fields derived from InSAR

Our analysis is focusing at the central and upper parts of the Skeiðarárjökull glacier. InSAR data show a rather stable velocity field for Skeiðarárjökull in 1995–1996 prior to the Gjálp eruption in November 1996. The few exceptions are related to intense rain or jökulhlaup (Magnússon et al., 2007). The variability is highest near the glacier

Reduced glacier sliding caused by persistent drainage

E. Magnússon et al.

Title Page

Abstract

Introduction

Conclusions

References

Tables

Figures

◀

▶

◀

▶

Back

Close

Full Screen / Esc

Printer-friendly Version

Interactive Discussion



Reduced glacier sliding caused by persistent drainage

E. Magnússon et al.

Title Page

Abstract

Introduction

Conclusions

References

Tables

Figures

◀

▶

◀

▶

Back

Close

Full Screen / Esc

Printer-friendly Version

Interactive Discussion



terminus, outside our study area. Our reference velocity field (\mathbf{V}_{ref} , Fig. 2a) is based on four InSAR scenes obtained between the end of December 1995 and the beginning of February 1996, and is representative for the motion of the glacier outlet during this winter. In the upper part we do not observe much seasonal variability, but as we go

5 further down-glacier the glacier motion appears slightly higher during summers (Fig. 3). Our velocity record subsequent to the Gjálp eruption shows the 24 h motion rate for discrete dates in the period from January 1997 until February 2000 (Figs. 2–3). It shows that subsequent to the large jökulhlaup in 1996 the motion of the glacier section below which water drains from Grímsvötn was reduced by >50% (Fig. 3). The motion

10 rate of this glacier section remained low throughout the study period, both during summers and winters. Further down-glacier this ice stream joins the main Skeiðarárjökull glacier outlet. On a cross-section over the main glacier outlet, above the flow route from Grímsvötn, the glacier motion was reduced by half after the jökulhlaup (Fig. 3). It remained low the first year, even during the summer but gradually evolved to its former

15 state during the study period. At the end of the period in 2000 the glacier motion did not differ significantly from our observations prior to the Gjálp eruption.

3.2 Observations of lake drainage

The subglacial lake Grímsvötn is located in a caldera above Iceland's most active central volcano. Water produced by geothermal and volcanic activity as well as surface melting accumulates in the lake, which in the second half of the 20th century led to

20 jökulhlaups at intervals of 1–10 year (Björnsson, 2002). Until 1996 the lake was sealed by an ice dam preventing drainage between jökulhlaups. The total volume of each jökulhlaup could therefore be used in a natural calorimeter for evaluating the heat output of the subglacial geothermal system (Björnsson and Gudmundsson, 1993). This

25 approach gives an estimated power of 1.9 GW for the period 1991–1996 (Magnússon, 2008).

The drainage pattern of Grímsvötn changed significantly in the autumn 1996 following the Gjálp subglacial eruption, 12 km north of Grímsvötn (Fig. 4c). Over a period of

Reduced glacier sliding caused by persistent drainage

E. Magnússon et al.

a month more than 3 km^3 of melt water produced by the eruption and the subsequent cooling of the Gjalp edifice accumulated in the Grímsvötn subglacial lake (Gudmundsson et al., 1997). The water accumulation led to hydrostatic uplift of the ice dam sealing Grímsvötn causing a jökulhlaup (Björnsson, 2002), which lasted for 2 days with peak flow from the lake of $40\,000 \text{ m}^3 \text{ s}^{-1}$. By the end of the jökulhlaup, water from the Gjalp edifice accumulated for few weeks in Grímsvötn but after that the lake level subsided until the spring of 1997 because water drained from the lake through a trench, formed during the jökulhlaup, cutting through the ice dam of Grímsvötn (Björnsson, 2002).

In the spring 1997 some water started to accumulate again in Grímsvötn and until the end of the year 1999 three minor jökulhlaups occurred. The total amount of water draining in these jökulhlaups was $\sim 0.9 \text{ km}^3$, estimated from discrete GPS elevation measurement on the centre of the Grímsvötn ice cover and known relation between the elevation and the water storage of Grímsvötn (Institute of Earth Sciences data). Estimated water inflow to the lake during that time was however $\sim 1.6 \text{ km}^3$. This value includes four components: a) surface melt water ($\sim 0.7 \text{ km}^3$, Magnússon, 2008), b) subglacial melt from the Gjalp edifice ($\sim 0.35 \text{ km}^3$, Jarosch et al., 2008), c) meltwater produced by an eruption within the caldera in 1998 (0.15 km^3 , Gudmundsson, 2005) and d) meltwater produced by geothermal activity in the Grímsvötn area ($\sim 0.45 \text{ km}^3$, derived by assuming the same geothermal power of the area in 1991–1996). The difference between the derived inflow and outflow via jökulhlaups gives a volume of water corresponding to flow of $\sim 9 \text{ m}^3 \text{ s}^{-1}$ drained from the lake between the jökulhlaups, averaged over the period. It is however not possible to determine from the discrete GPS data if the drainage was continuous or occurred in several short events.

InSAR data from 1995–1996, prior to the Gjalp eruption, show seasonal variations in the water accumulation rate in Grímsvötn related to changes in surface melt rate. It starts increasing in June and may exceed $30 \text{ m}^3 \text{ s}^{-1}$ during the summer. Throughout the autumn it remained high and was still $17 \text{ m}^3 \text{ s}^{-1}$ in late October 1995, which indicates inefficient transport of melt water to the lake (values derived in the same way as in Fig. 3). In December the accumulation rate seems to have reached the winter

[Title Page](#)[Abstract](#)[Introduction](#)[Conclusions](#)[References](#)[Tables](#)[Figures](#)[◀](#)[▶](#)[◀](#)[▶](#)[Back](#)[Close](#)[Full Screen / Esc](#)[Printer-friendly Version](#)[Interactive Discussion](#)

minimum between 4 and 8 m³ s⁻¹. The average of the InSAR-deduced winter values for Grímsvötn before the Gjálp eruption is 6 m³ s⁻¹. The power needed to maintain this melt rate corresponds to 2.0 GW, slightly higher than the estimated power of 1.9 GW for the period 1991–1996.

5 For 1–2 January and 12–13 March 1997 the InSAR data show, in accordance with field observation, water depletion in Grímsvötn, despite significant drainage from the Gjálp edifice (Gudmundsson et al., 2002). After this we observe from the InSAR data either uplift in Grímsvötn due to water accumulation or insignificant change. We still observe seasonal variability in the water accumulation in Grímsvötn but in general the
10 net water accumulation is lower for a given time of the year after the Gjálp eruption than for the same time of the year prior to it, indicating that Grímsvötn leaked continuously from 1997 throughout our study period.

The estimation of change in water accumulation rate in Grímsvötn is most reliable in the winter time (Fig. 5) when the variability of the surface melt rate is negligible. To
15 make a legitimate comparison we subtract from the net accumulation the estimated drainage from the Gjálp edifice, which otherwise would cause bias in all values from 1997 and later. Gudmundsson et al. (2002) estimated this drainage for 21–22 May 1997, and values for December 1997 and February 2000 are from Jarosch et al. (2008), who estimated the drainage from Gjálp as a stepwise function of 5 m³ s⁻¹ from June
20 1997 to June 1999 and 2 m³ s⁻¹ after that until June 2001. For January and February 1999, close to the step in this curve we use a more moderate value of 3 m³ s⁻¹ instead of 5 m³ s⁻¹. Having subtracted the drainage from Gjálp, the residual values, range from -5 m³ s⁻¹ to 1 m³ s⁻¹ (Fig. 5) compared to 4–8 m³ s⁻¹ prior to the Gjálp eruption. Assuming the same range of geothermal melt rate for Grímsvötn as observed from the
25 InSAR data prior to the Gjálp eruption these values indicate 3–13 m³ s⁻¹ outflow from Grímsvötn for winter scenes from December 1997 to February 2000.

Conductivity above 100 μS cm⁻¹ is considered an indicator of geothermal water component in rivers of southern and eastern Iceland (S. R. Gislason, personal communication, 2008). The conductivity in the river outlet Skeiðará, into which Grímsvötn drains,

Reduced glacier sliding caused by persistent drainageE. Magnússon et al.

[Title Page](#)[Abstract](#)[Introduction](#)[Conclusions](#)[References](#)[Tables](#)[Figures](#)[◀](#)[▶](#)[◀](#)[▶](#)[Back](#)[Close](#)[Full Screen / Esc](#)[Printer-friendly Version](#)[Interactive Discussion](#)

was typically $200\text{--}500\ \mu\text{S cm}^{-1}$ during wintertime in 1997–2000 (Hydrological Service, 2008), even in January 1999, shortly before a small jökulhlaup from the lake, when the InSAR data suggest that the drainage was at minimum. During summers dilution by glacier surface melt makes conductivity measurements in the river inconclusive for identifying continuous leak of geothermal water from Grímsvötn.

4 Discussion

According to conventional concepts glacier basal sliding varies inversely with the effective basal pressure (the ice overburden pressure minus the water pressure) (e.g. Paterson, 2006). For glaciers with bed temperature at pressure melting point we can distinguish between two main types of drainage system with different water transport capacity and water pressure characteristics. Firstly, a distributed drainage system of water filled cavities hydraulically interconnected by small orifices in which the water pressure increases with the flux (Walder, 1986). Secondly, a tunnel flow drainage system (Röthlisberger, 1972) which for steady state the water pressure relates inversely to the water flux. A switch from a distributed system to a tunnel flow drainage has been associated with the termination of a glacier surge (Kamb, 1987). A well established tunnel flow system has also been suggested to explain a minimum in glacier motion concurrent to a record negative mass balance on Black Rapids glacier in Alaska (Truffer et al., 2005).

Based on our observations we suggest that water from Grímsvötn drained continuously through a tunnel underneath the glacier after the seal of the lake was damaged. The tunnel flow considerably reduced the subglacial water pressure in the vicinity of its flow path by draining water from the pre-existing distributed drainage system of high water pressure, which sustained significant basal sliding when the lake was still sealed. The affected area was large enough to reduce the basal sliding significantly on ~ 5 km wide area on the upper part and ~ 8 km wide are on the centre part (Figs. 2 and 3). The evolution of the glacier motion towards its former state at the centre of the glacier took

Reduced glacier sliding caused by persistent drainage

E. Magnússon et al.

Title Page

Abstract

Introduction

Conclusions

References

Tables

Figures



Back

Close

Full Screen / Esc

Printer-friendly Version

Interactive Discussion



place during the reduced leakage from Grímsvötn at the end of our observation period (Figs. 2–3). At higher elevations drainage of few $\text{m}^3 \text{s}^{-1}$ constrained motion of ~ 5 km wide glacier section throughout our study period.

To enable modelling of the lateral pressure reduction at the glacier bed produced by the leakage from the lake and the consequent reduction in basal sliding, a two-dimensional model of coupled tunnel and distributed water system is required. For such modelling more data on the pre-existing drainage system in the leakage path and various other parameters are needed. The outcome of such a model would not be more conclusive than the presented results due to its complexity and lack of constraints. Our observation should however be considered when expanding models of coupled tunnel and distributed water system (e.g. Flowers, 2008) into two dimensions regarding the parameterisation of the coupling of the water pressure in the two systems and the water exchange between them.

Our observations may have relevance to considerations of how increase in meltwater may accelerate the ice flow of the Greenland ice sheet (Zwally et al., 2002). The relevance to other leaking subglacial lakes (e.g. Fricker et al., 2007) underneath warm based glacier would depend on whether the leakage is continuous or pulsed and on the water pressure of the pre-existing drainage system.

5 Conclusions

A jökulhlaup from the subglacial lake Grímsvötn in Vatnajökull damaging the lake's ice dam, produced a rare opportunity to observe the effects of changing pattern of subglacial water flow on glacier motion. InSAR observations suggest that a leakage of $> 3 \text{ m}^3 \text{ s}^{-1}$ prevailed throughout our study period (1995–2000). The presented InSAR observations show $\sim 50\%$ reduction in glacier motion above the estimated flow route from Grímsvötn subsequent to the jökulhlaup. The motion rate remained low in the upper part of the glacier throughout our study period, but the lower part had reached the pre-jökulhlaup velocity in January 2000.

Reduced glacier sliding caused by persistent drainage

E. Magnússon et al.

Title Page

Abstract

Introduction

Conclusions

References

Tables

Figures

◀

▶

◀

▶

Back

Close

Full Screen / Esc

Printer-friendly Version

Interactive Discussion



Reduced glacier sliding caused by persistent drainageE. Magnússon et al.

[Title Page](#)[Abstract](#)[Introduction](#)[Conclusions](#)[References](#)[Tables](#)[Figures](#)[◀](#)[▶](#)[◀](#)[▶](#)[Back](#)[Close](#)[Full Screen / Esc](#)[Printer-friendly Version](#)[Interactive Discussion](#)

In accordance with current understanding that basal sliding varies inversely with the effective basal pressure and that onset of steady state tunnel flow is likely to reduce the basal water pressure (Röthlisberger, 1972; Kamb, 1987), our observations suggest that the continuous water drainage from Grímsvötn formed tunnel flow at low water pressure. The reduction in water pressure propagated laterally from the tunnel over a distance of few km, reducing the basal sliding of an area of ~ 5 km width in the upper part and ~ 8 km in the centre part of the glacier.

Acknowledgements. The ERS1/2 tandem data were made available by ESA through projects AO3.108 (VECTRA) and AO3.239. The EMISAR-DEM from 1998 was used by courtesy of National Space Institute, DTU, Denmark. This work was supported by the Bertha von Suttner Foundation, the Icelandic Centre for Research, Landsvirkjun the Memorial Foundation of Helga Jónsdóttir and Sigurliði Kristjánsson and the Icelandic Road Administration. We thank Thomas Nagler and Florian Müller for their help with the processing of the InSAR data. Freysteinn Sigmundsson, Magnús T. Guðmundsson and Alexander H. Jarosch are thanked for access to computational power and Sverrir Guðmundsson for valuable advice regarding numerical calculations. Einar Sveinbjörnsson is thanked for providing temperature data.

References

- Anderson, R. S., Walder, J. S., Anderson, S. P., Trabant, D. C., and Fountain, A. G.: The dynamic response of Kennicott Glacier, Alaska, USA, to the Hidden Creek Lake outburst flood, *Ann. Glaciol.*, 40, 237–242, 2005.
- Bacher, U., Bludovsky, S., Dorrer E., and Münzer, U.: Precision aerial survey of Vatnajökull, Iceland by digital photogrammetry, in: Proceedings of Third Turkish-German Joint Geodetic Days – Towards a Digital Age, edited by: Oltan, M. O. and Gründig, L., Istanbul Tech. Univ., Istanbul, 1–10, 1999.
- Bartholomäus, T. C., Anderson, R. S., and Anderson, S. P.: Response of glacier motion to transient water storage, *Nature Geosci.*, 1, 33–37, 2008.
- Berthier, E.: Dynamique et bilan de masse des glaciers de montagne (Alpes, Islande, Himalaya), Contribution de l'imagerie satellitaire, PhD thesis, Université Paul Sabatier, 250 pp., 2005.

- Björnsson, H.: Subglacial lakes and jökulhlaups in Iceland, *Global Planet. Change*, 35, 255–271, 2002.
- Björnsson, H. and Gudmundsson, M. T.: Variations in the thermal output of the subglacial Grímsvötn caldera, Iceland, *Geophys. Res. Lett.*, 20, 2127–2130, 1993.
- 5 Flowers, G. E.: Subglacial modulation of the hydrograph from glacierized basins, *Hydrol. Processes*, 22(19), 3903–3918, 2008.
- Fricker, H. A., Scambos, T., Bindenschadler, R., and Padman, L.: An Active Subglacial Water System Mapped from Space, *Science*, 315, 1544–1548, 2007.
- 10 Gudmundsson, M. T.: Subglacial volcanic activity in Iceland, in: *Iceland – Modern Processes and past environments*, edited by: Caseldine, C., Russel, A., Hardardóttir, J., and Knudsen, Ó., *Developments in Quaternary Science*, 5, 127–151, 2005.
- Gudmundsson, M. T., Sigmundsson, F., and Björnsson, H.: Ice-volcano interaction of the 1996 Gjalp subglacial eruption, Vatnajökull, Iceland, *Nature*, 389, 954–957, 1997.
- 15 Gudmundsson, S., Gudmundsson, M. T., Björnsson, H., Sigmundsson, F., Rott, H., and Carstensen, J. M.: Three-dimensional glacier surface motion maps at the Gjalp eruption site, Iceland, inferred from combining InSAR and other ice-displacement data, *Ann. Glaciol.*, 34, 315–322, 2002.
- Hanssen, F. R.: *Radar Interferometry -Data Interpretation and Error Analysis*, Kluwer Academic Publishers, Dordrecht, The Netherlands, 328 pp., 2001.
- 20 Hydrological Service, Orkustofnun: Delivery of data from the database of the Hydrological Service, Orkustofnun, Iceland, no. 2008/33, 2008.
- Iken, A.: Variations of surface velocities of some Alpine glaciers measured at intervals of a few hours, Comparison with arctic glaciers, *Zeitschrift für Gletscherkunde und Glazialgeologie*, 13, 23–35, 1978.
- 25 Jarosch, A. H., Gudmundsson, M. T., Högnadóttir, Th., and Axelsson, G.: The progressive cooling of the hyaloclastite ridge at Gjalp, Iceland, 1996–2005, *J. Volcanol. Geotherm. Res.*, 170, 218–229, 2008.
- Kamb, B.: Glacier surge mechanism based on linked cavity configuration of the basal water conduit system, *J. Geophys. Res.*, 92, 9083–9100, 1987.
- 30 Magnússon, E.: *Glacier hydraulics explored by means of SAR-interferometry*, PhD thesis, Leopold-Franzens-Universität Innsbruck, 107 pp., 2008.
- Magnússon, E., Björnsson, H., Dall, J., and Pálsson, F.: Volume changes of Vatnajökull ice cap, Iceland, due to surface mass balance, ice flow, and subglacial melting at geothermal areas,

Reduced glacier sliding caused by persistent drainageE. Magnússon et al.

[Title Page](#)[Abstract](#)[Introduction](#)[Conclusions](#)[References](#)[Tables](#)[Figures](#)[◀](#)[▶](#)[◀](#)[▶](#)[Back](#)[Close](#)[Full Screen / Esc](#)[Printer-friendly Version](#)[Interactive Discussion](#)

- Geophys. Res. Lett., 32, L05504, doi:10.1029/2004GL021615, 2005.
- Magnússon, E., Rott, H., Björnsson, H., and Pálsson, F.: The impact of jökulhlaups on basal sliding observed by SAR Interferometry on Vatnajökull, Iceland, *J. Glaciol.*, 53(181), 232–240, 2007.
- 5 Paterson, W. S. B.: *The Physics of Glaciers*, 3rd ed., Butterworth-Heinemann, Oxford, UK, 481 pp., 2006.
- Reeh, N., Mohr, J. J., Madsen, S. N., Oerter, H., and Gundestrup, N. S.: Three-dimensional surface velocity of Storstrømmen glacier, Greenland, derived from radar interferometry and ice-sounding radar measurements, *J. Glaciol.*, 49(165), 201–209, 2003.
- 10 Röthlisberger, H.: Water pressure in intra- and subglacial channels, *J. Glaciol.*, 11(62), 177–203, 1972.
- Sugiyama, S. and Gudmundsson, G. H.: Short-term variations in glacier flow controlled by subglacial water pressure at Lauteraargletscher, Bernese Alps, Switzerland, *J. Glaciol.*, 50(170), 353–362, 2004.
- 15 Truffer, M., Harrison, W. D., and March, R. S.: Correspondence – Record negative glacier balance and low velocities during the 2004 heat wave in Alaska, USA: implications for the interpretation of observations by Zwally et al. in Greenland, *J. Glaciol.*, 51(175), 663–664, 2005.
- Walder, J. S.: Hydraulics of subglacial cavities, *J. Glaciol.*, 32(112), 439–445, 1986.
- 20 Willis, I. C.: Intra-annual variations in glacier motion: a review, *Progress in Physical Geography*, 19, 61–106, 1995.
- Zwally, H. J., Abdalati, W., Herring, T., Larson, K., Saba, J., and Steffen, K.: Surface Melt-Induced Acceleration of Greenland Ice-Sheet Flow, *Science*, 297, 218–222, 2002.

Reduced glacier sliding caused by persistent drainageE. Magnússon et al.

[Title Page](#)[Abstract](#)[Introduction](#)[Conclusions](#)[References](#)[Tables](#)[Figures](#)[◀](#)[▶](#)[◀](#)[▶](#)[Back](#)[Close](#)[Full Screen / Esc](#)[Printer-friendly Version](#)[Interactive Discussion](#)

Reduced glacier sliding caused by persistent drainage

E. Magnússon et al.

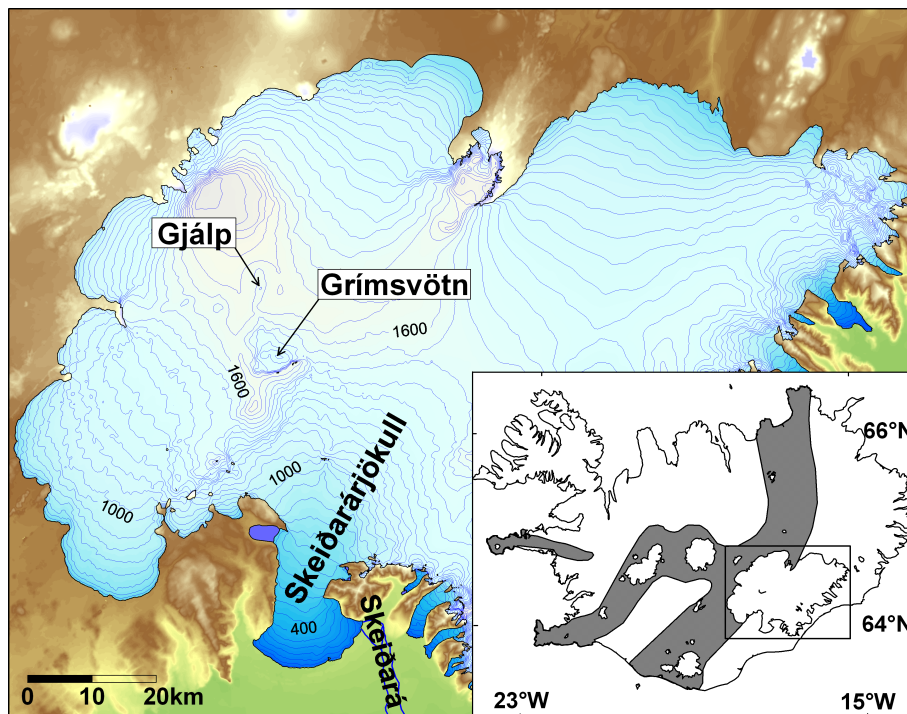


Fig. 1. Map of the Vatnajökull ice cap. The volcanic zones of Iceland are shown in grey in the inset.

[Title Page](#)[Abstract](#)[Introduction](#)[Conclusions](#)[References](#)[Tables](#)[Figures](#)[◀](#)[▶](#)[◀](#)[▶](#)[Back](#)[Close](#)[Full Screen / Esc](#)[Printer-friendly Version](#)[Interactive Discussion](#)

Reduced glacier sliding caused by persistent drainage

E. Magnússon et al.

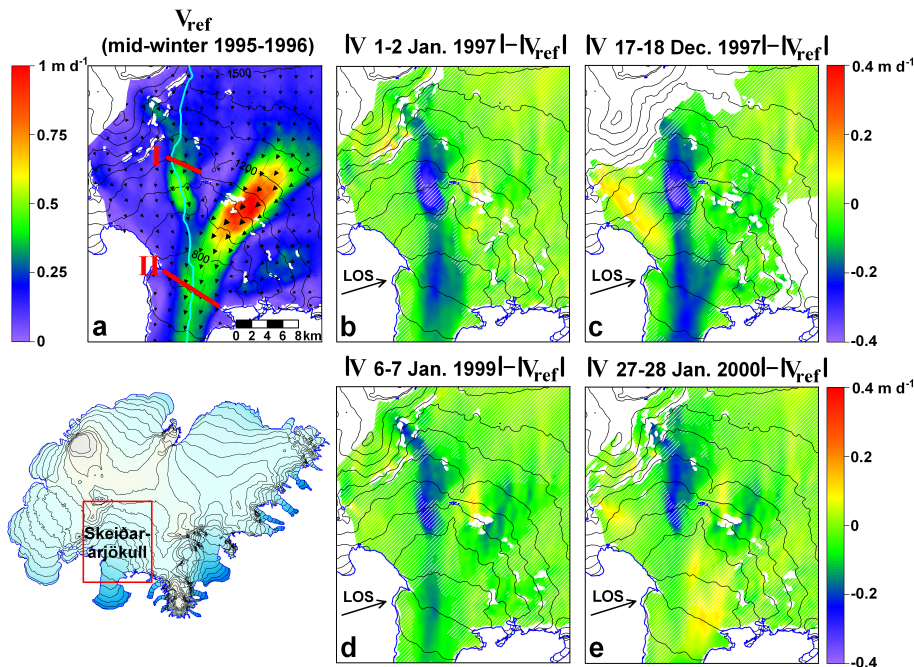


Fig. 2. (a) The horizontal velocity field V_{ref} during mid-winter 1995–1996. Contours show elevation based on DEMs from 1996–1998 (Magnússon, 2008; Bacher et al., 1999; Magnússon et al., 2005). The light blue line shows the estimated flow route from Grímsvötn. Velocities on the two cross sections are shown in Fig. 3. (b–e) The change in horizontal velocity relative to V_{ref} with approximately one year interval from January 1997 to January 2000. The hatched regions indicate areas where the difference in LOS motion relative to V_{ref} is less than half a fringe (1.9 cm). These are areas where the impact of processing noise may be significant in relation to the derived velocity change. Radar line of sight (LOS) is indicated with an arrow.

Title Page

Abstract Introduction

Conclusions References

Tables Figures

◀ ▶

◀ ▶

Back Close

Full Screen / Esc

Printer-friendly Version

Interactive Discussion



Reduced glacier sliding caused by persistent drainage

E. Magnússon et al.

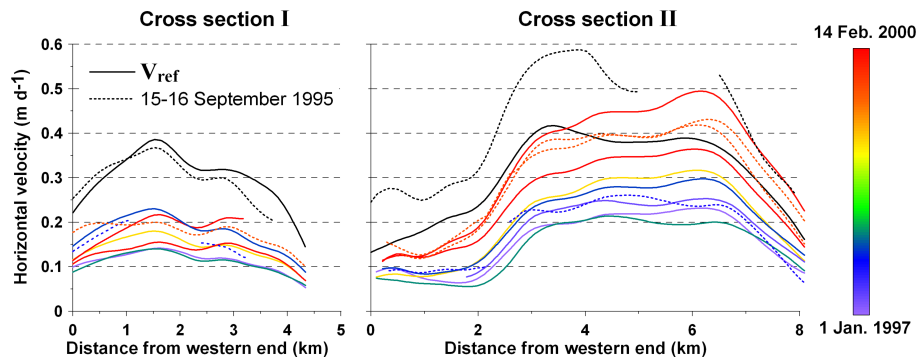


Fig. 3. The ice motion on two cross sections on Skeiðarárjökull (locations shown in Fig. 2a) derived from InSAR data for various dates. The time for each measurement after the Gjálp eruption is given with the colour bar. Scenes from June–September, which may show higher velocity due to seasonal variability, are shown with dotted lines. Radar LOS is approximately the same for all the measurements as shown in Fig. 2b–e.

Title Page

Abstract

Introduction

Conclusions

References

Tables

Figures

◀

▶

◀

▶

Back

Close

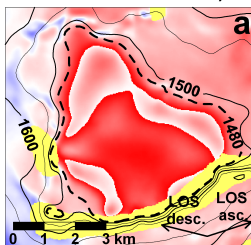
Full Screen / Esc

Printer-friendly Version

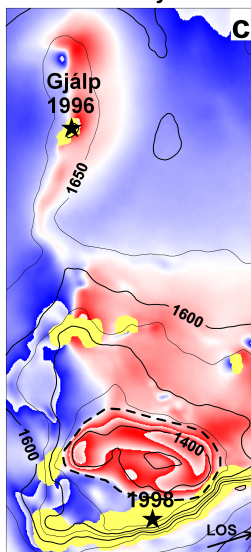
Interactive Discussion



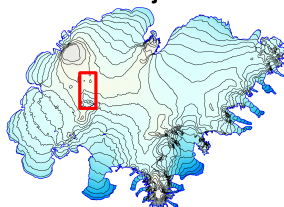
Mean(27-28 Dec. 1995
& 29-30 Dec. 1995)



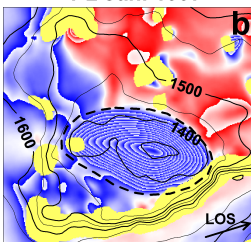
6-7 January 1999



Vatnajökull



1-2 Jan. 1997



14-15 February 2000

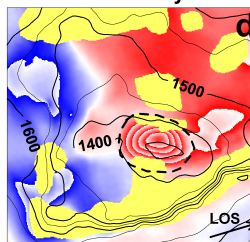


Fig. 4. (a–d) Topographically corrected interferograms of the Grímsvötn ice cover. White to blue fringes correspond to motion away from the satellites but white to red towards (LOS is indicated with an arrow). Broken lines indicate areas interpreted as the floating part of Grímsvötn ice cover. The yellow colour indicates areas where no usable interferometric measurements were obtained. **(a)** The average of two interferograms from ascending (looking eastward) and descending (looking westward) orbits, two days apart, before the Gjalp eruption. By combining interferograms from opposite radar look directions the contributions of the velocity component in east-west direction are almost completely cancelled out, making the rising and floating area more distinctive. Its border coincides with the 1480 m contour line, which according to GPS measurement matches the surface elevation of the floating ice cover at that time. **(b–d)** Interferograms from ascending orbits at three dates after the Gjalp eruption reveal much smaller floating area than in (a). Stars in **(c)** show the location of eruption sites in 1996 and 1998. Contours indicate elevation in August 1998 (Magnússon et al., 2005).

Title Page

Abstract

Introduction

Conclusions

References

Tables

Figures

◀

▶

◀

▶

Back

Close

Full Screen / Esc

Printer-friendly Version

Interactive Discussion



Reduced glacier sliding caused by persistent drainage

E. Magnússon et al.

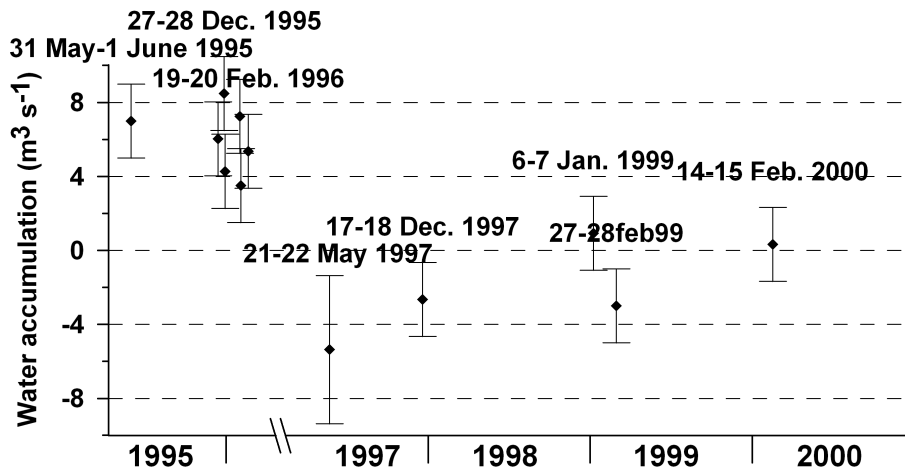


Fig. 5. The estimated water accumulation in lake Grímsvötn in winters derived from various interferograms, minus the estimated drainage produced during the cooling of the Gjálp edifice. Error bars are due to uncertainties in the estimated net water accumulation in Grímsvötn and the drainage from Gjálp.

Title Page

Abstract

Introduction

Conclusions

References

Tables

Figures

◀

▶

◀

▶

Back

Close

Full Screen / Esc

Printer-friendly Version

Interactive Discussion

