

Supplement of The Cryosphere, 9, 255–268, 2015
<http://www.the-cryosphere.net/9/255/2015/>
doi:10.5194/tc-9-255-2015-supplement
© Author(s) 2015. CC Attribution 3.0 License.



Supplement of

Regional melt-pond fraction and albedo of thin Arctic first-year drift ice in late summer

D. V. Divine et al.

Correspondence to: D. V. Divine (dmitry.divine@npolar.no)

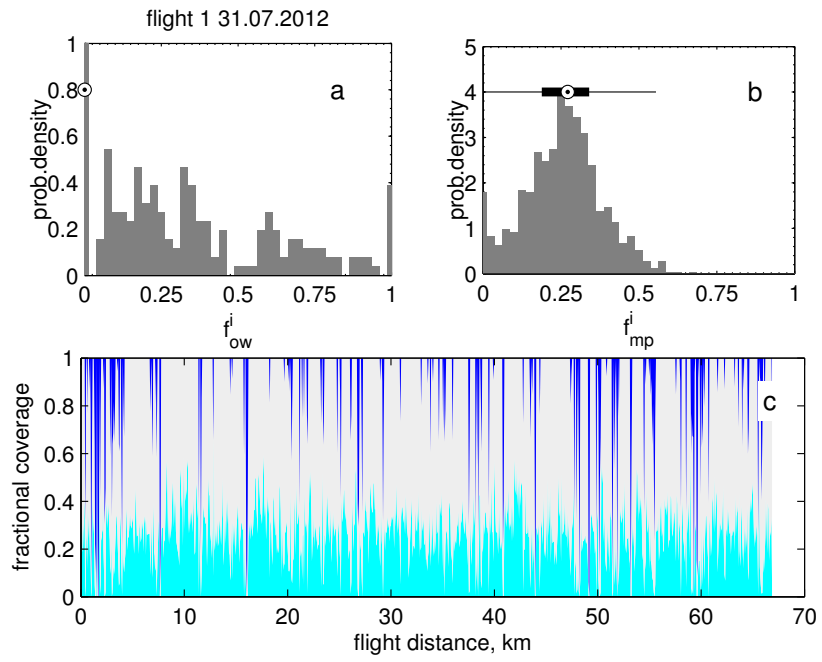


Figure S1: Data summary from flight 1 on 31.07.2012

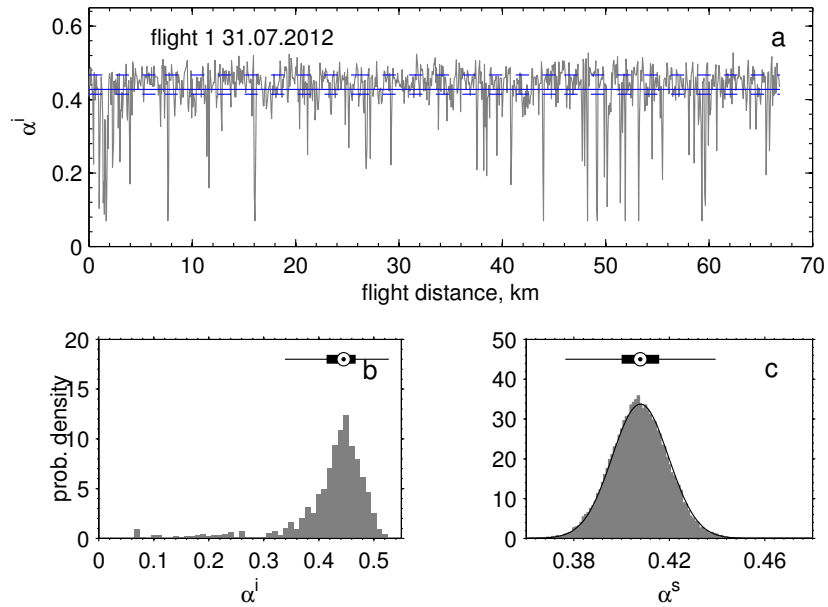


Figure S2: Image based and swath based aggregate scale albedo flight 1 on 31.07.2012

Table 1: Empirically estimated albedo of the four main surface types and their respective standard deviations. Sample (single point) STD is due to spread in *in situ* albedo measurements and total STD estimated as a sum of the series based uncertainty in $\overline{\alpha_j}$ due to spread and the instrumental uncertainty.

Surface type j	average albedo $\overline{\alpha_j}$	sample STD $\sigma_{\alpha_j}^{sp}$	total $\overline{\alpha_j}$ STD $\sigma_{\overline{\alpha_j}}$
white ice	0.55	0.05	0.015
dark pond	0.15	0.04	0.016
bright pond	0.34	-	0.034
open water	0.07	-	0.007

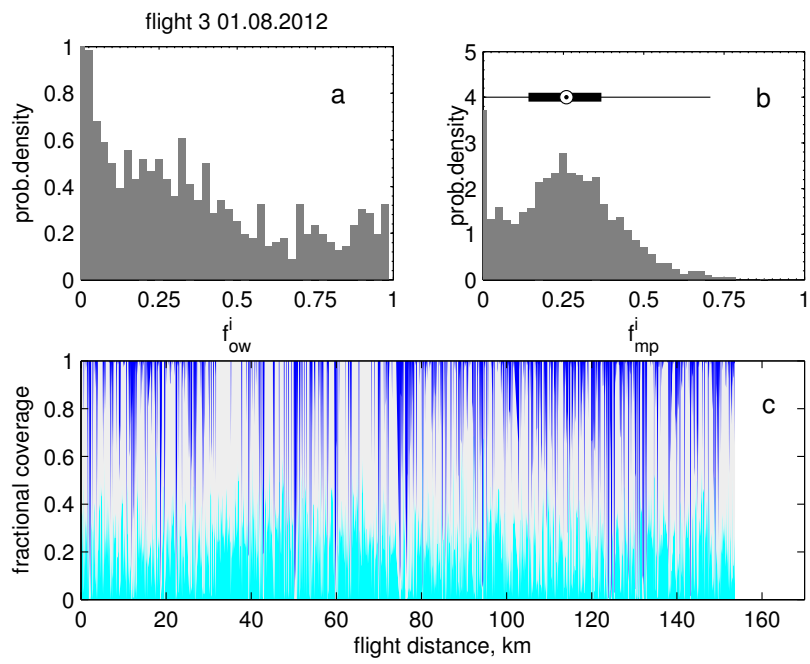


Figure S3: Data summary from flight 3 on 01.08.2012

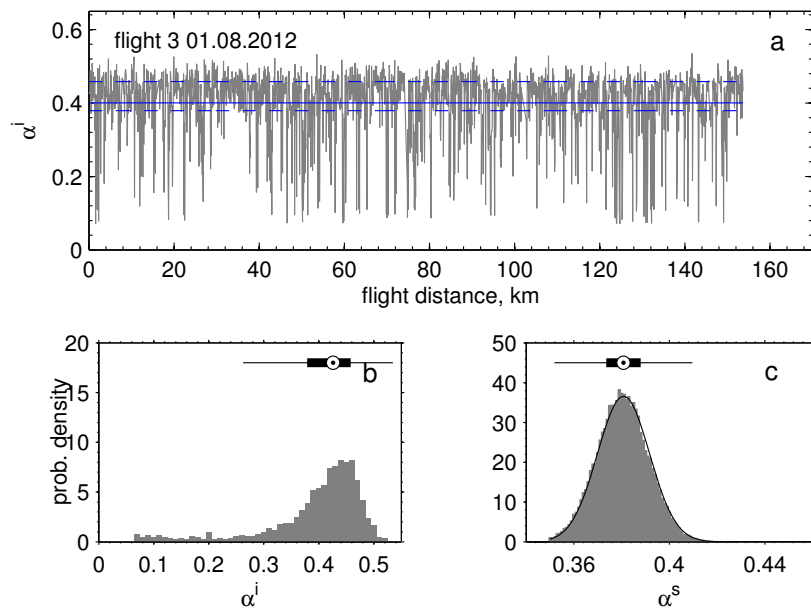


Figure S4: Image based and swath based aggregate scale albedo flight 3 on 01.08.2012

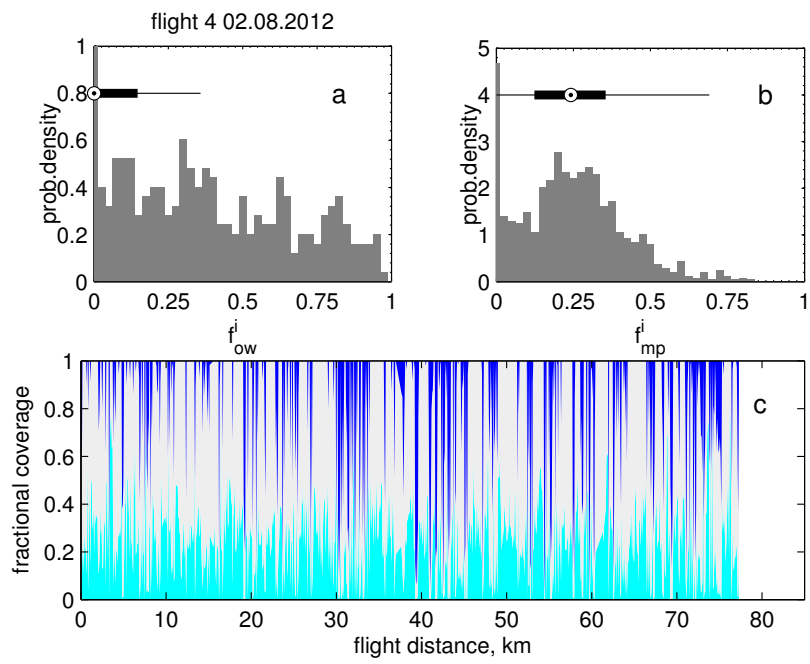


Figure S5: Data summary from flight 4 on 02.08.2012

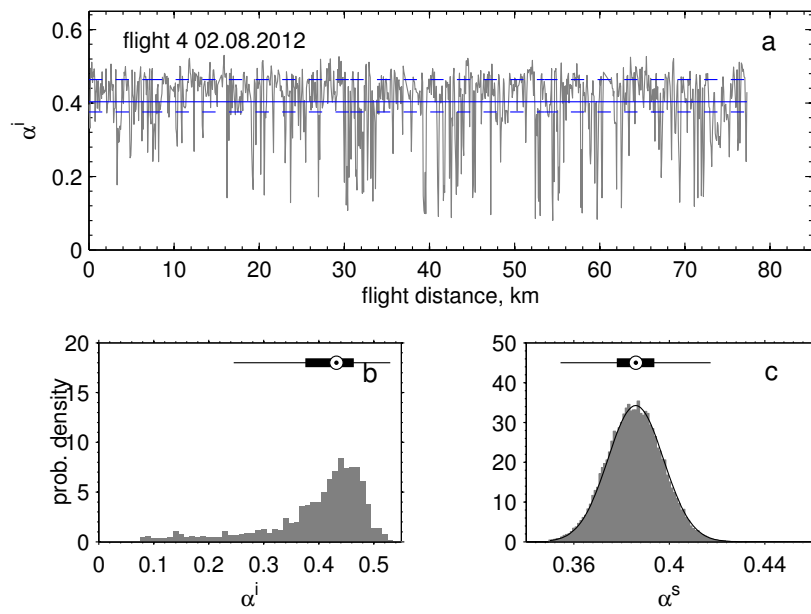


Figure S6: Image based and swath based aggregate scale albedo flight 4 on 02.08.2012

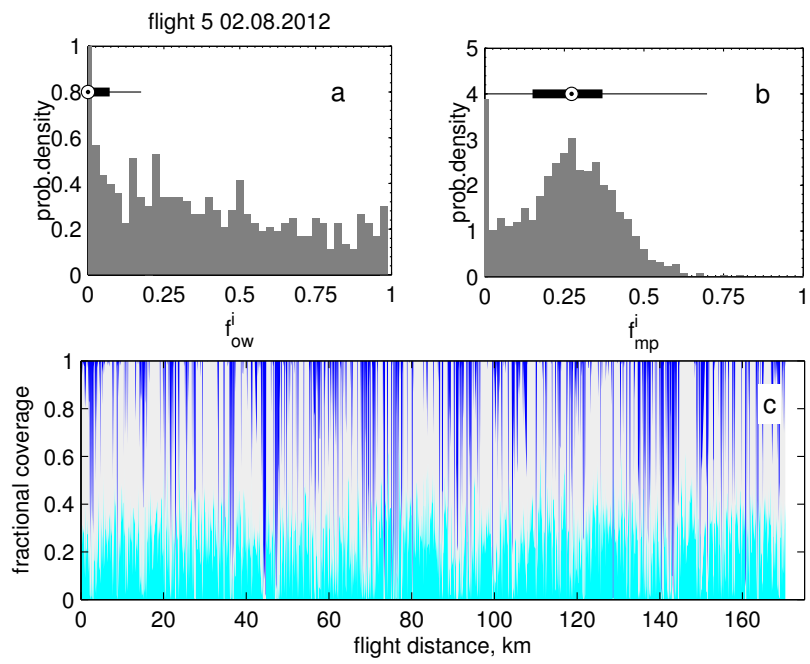


Figure S7: Data summary from flight 5 on 02.08.2012

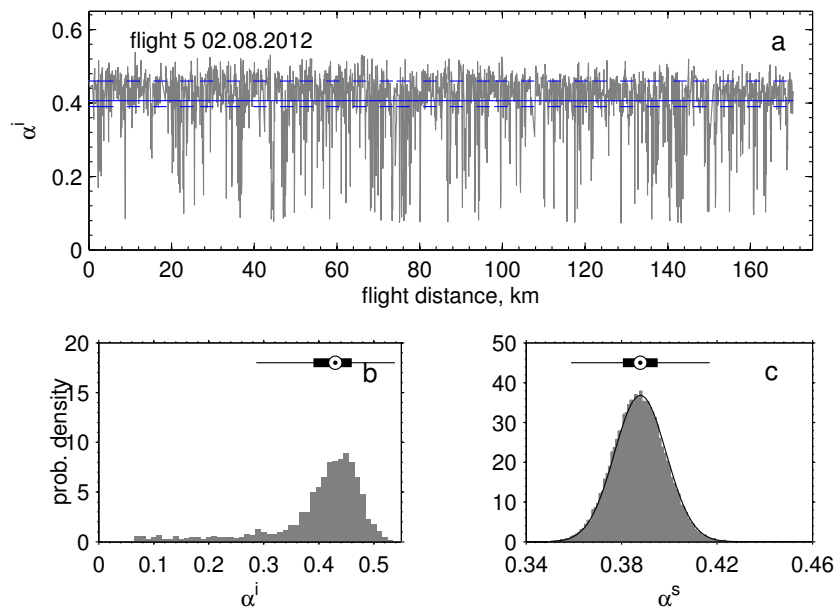


Figure S8: Image based and swath based aggregate scale albedo flight 5 on 02.08.2012