



Supplement

T. Albrecht^{1,2} and A. Levermann^{1,2}

¹Earth System Analysis, Potsdam Institute for Climate Impact Research, Potsdam, Germany

²Institute of Physics and Astronomy, University of Potsdam, Potsdam, Germany

Correspondence to: T. Albrecht (torsten.albrecht@pik-potsdam.de)

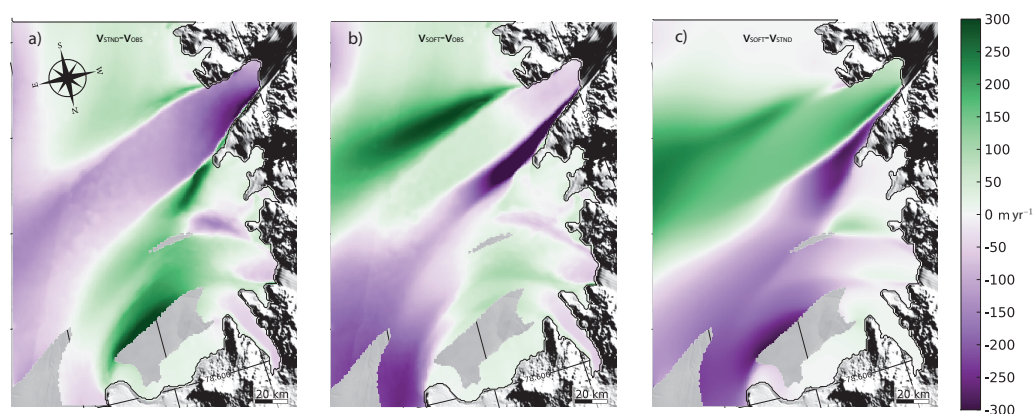


Fig. S1. Byrd Inlet ice speed anomalies (a) standard model minus observations, (b) fracture-softened model minus observations and (c) fracture-softened model minus standard model.

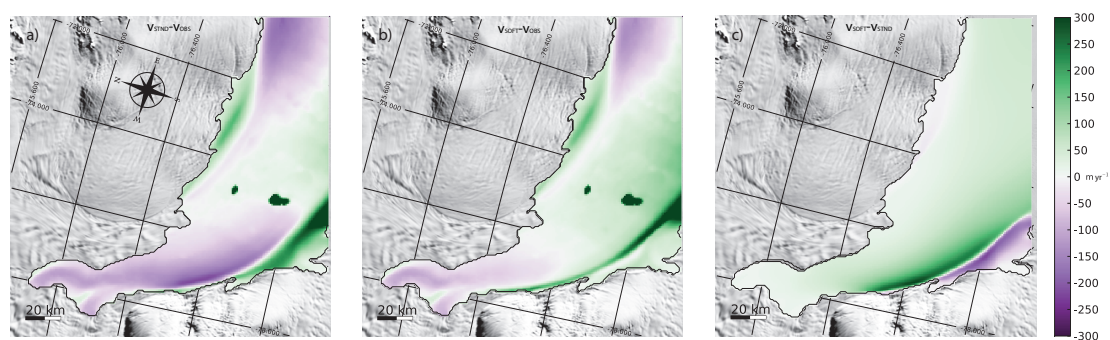


Fig. S2. Evans Inlet ice speed anomalies (a) standard model minus observations, (b) fracture-softened model minus observations and (c) fracture-softened model minus standard model.

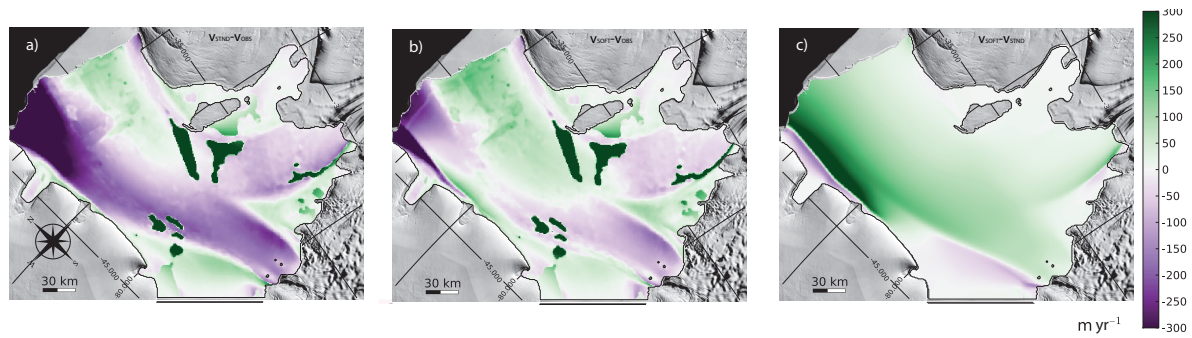


Fig. S3. Filchner Ice Shelf ice speed anomalies (a) standard model minus observations, (b) fracture-softened model minus observations and (c) fracture-softened model minus standard model.

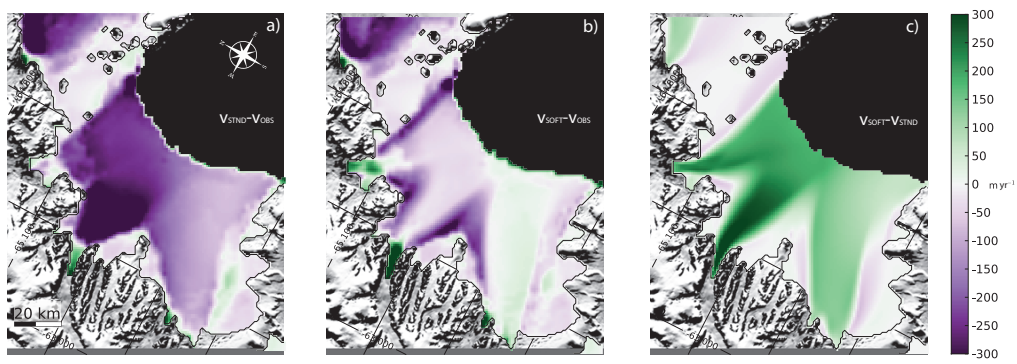


Fig. S4. Larsen B ice speed anomalies (a) standard model minus observations, (b) fracture-softened model minus observations and (c) fracture-softened model minus standard model.