



Supplement of

Airborne lidar and machine learning reveal decreased snow depth in burned forests

Arielle Koshkin and Adrienne M. Marshall

Correspondence to: Arielle Koshkin (arielle.koshkin@colorado.edu)

The copyright of individual parts of the supplement might differ from the article licence.

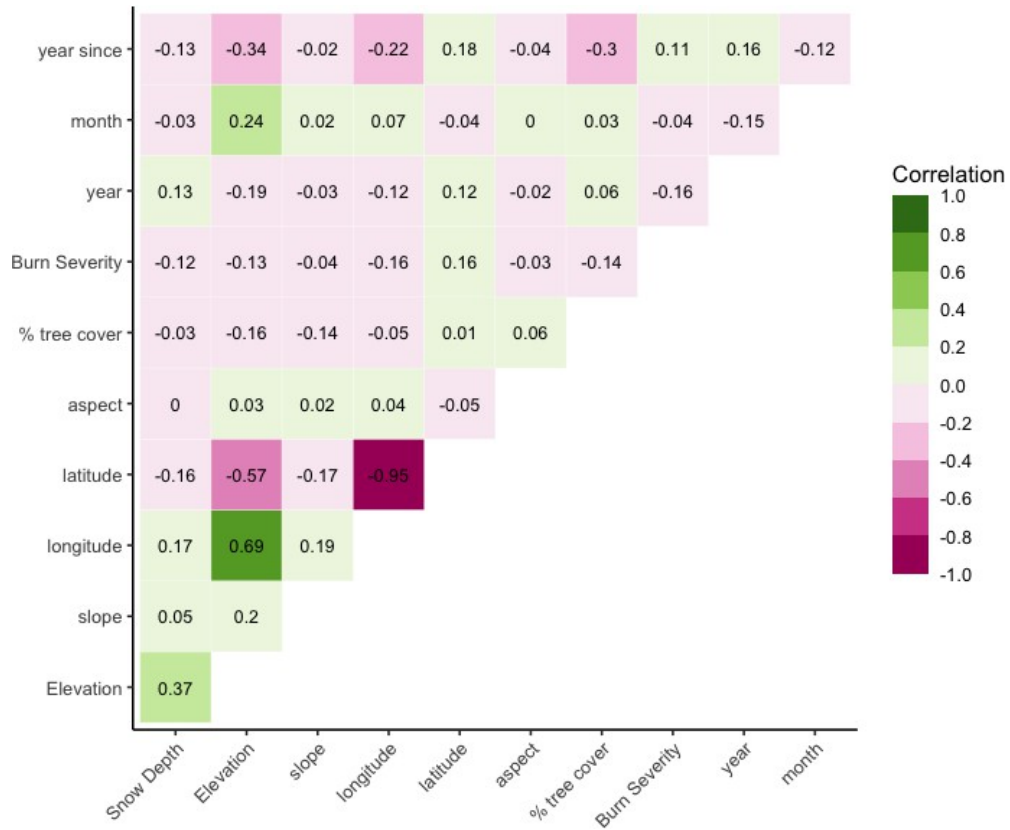


Figure S1. Correlation matrix for predictor variables used in the machine learning algorithm. X and Y coordinates show a strong correlation across the Sierra Nevada, but are not strongly correlated within individual basins.

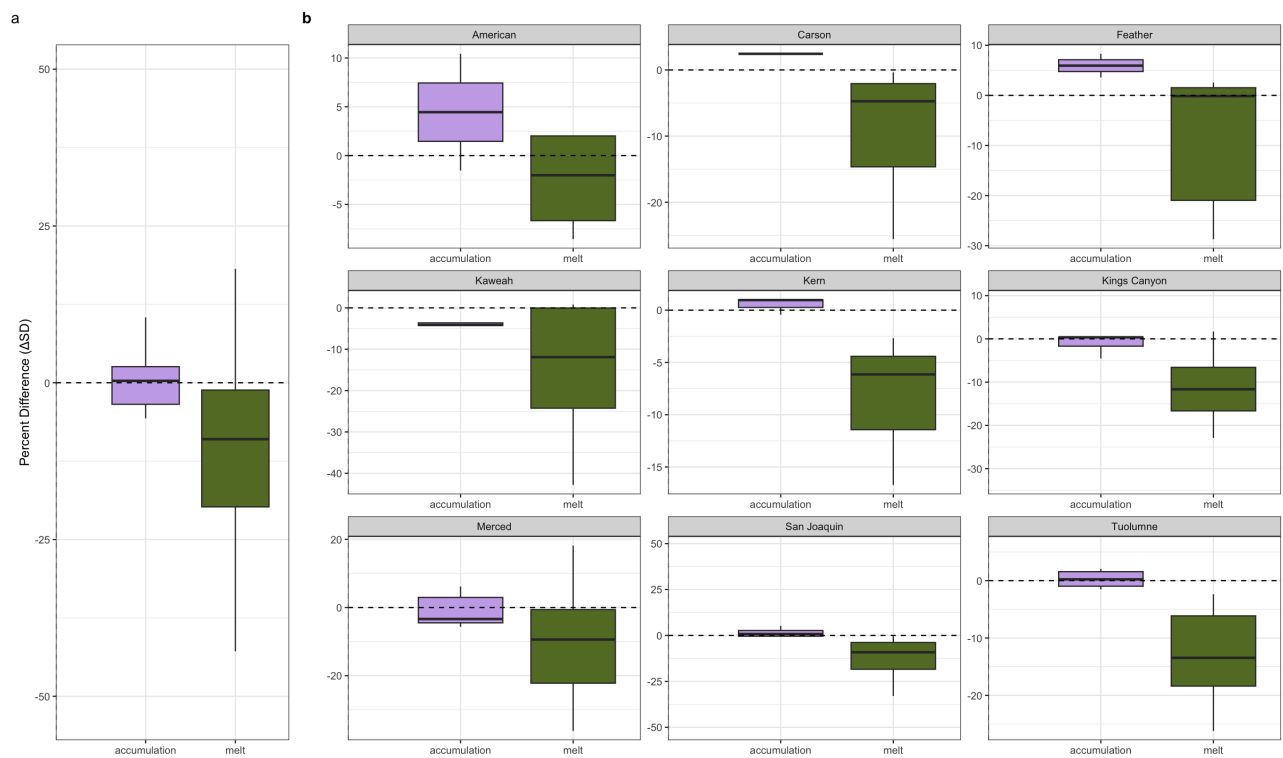


Figure S2. Basin-wide average of ΔSD in accumulation and melt season snow distribution across Sierra Nevada basins. (a) Box plots showing the overall percent difference in snow distribution during the accumulation (before peak SWE) and melt (after peak SWE) in all basins. (b) Box plots of ΔSD for each basin, separated by season (accumulation and melt).

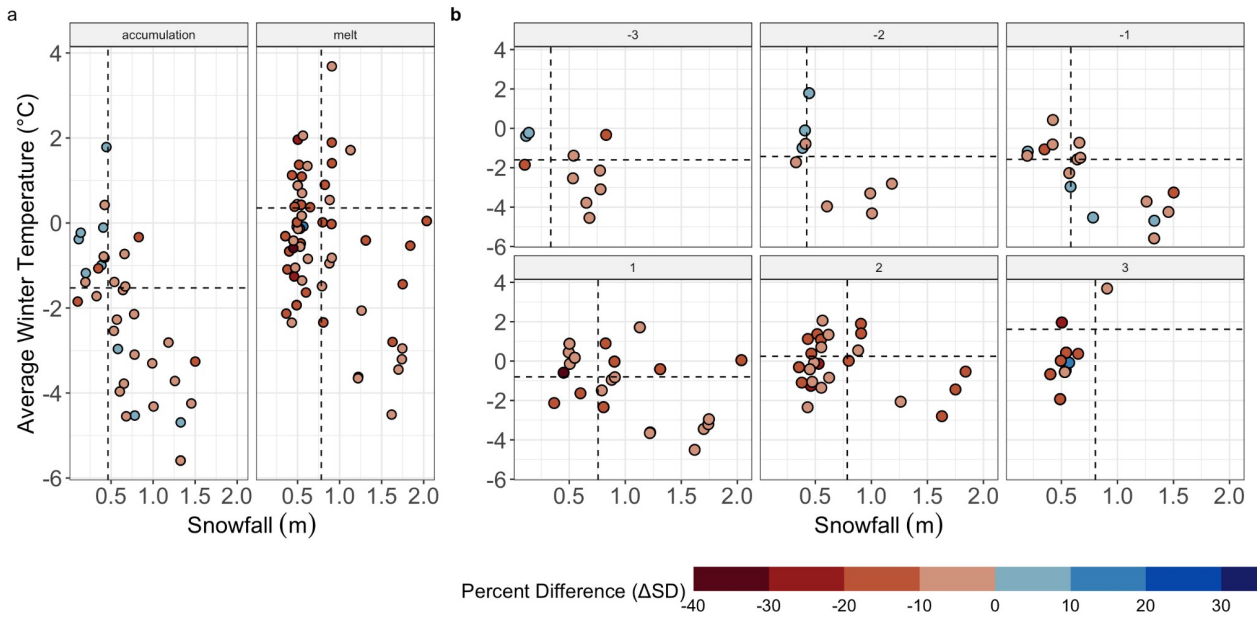


Figure S3. Basin-wide ΔSD by average monthly temperatures and snowfall. Colored points indicate the average ΔSD for each lidar acquisition. Dashed lines indicate average snowfall and temperature from 2020-2024 across the nine basins for the accumulation season (3 months before peak SWE) and melt (three months after peak SWE).

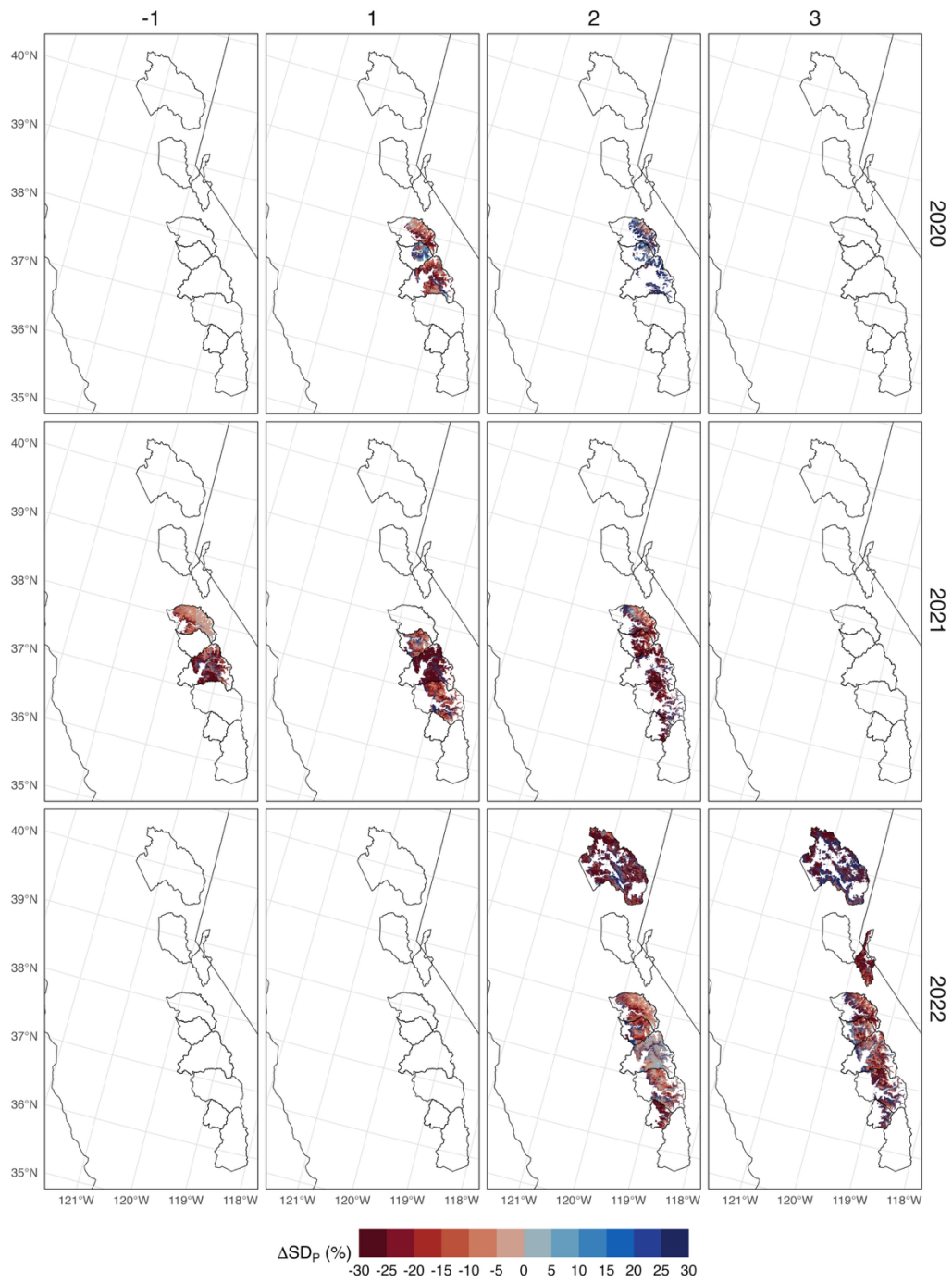


Figure S4. Spatial maps of ΔSD for water years 2020, 2021, and 2022 (the years with the fewest lidar acquisitions) across the 9 study basins.

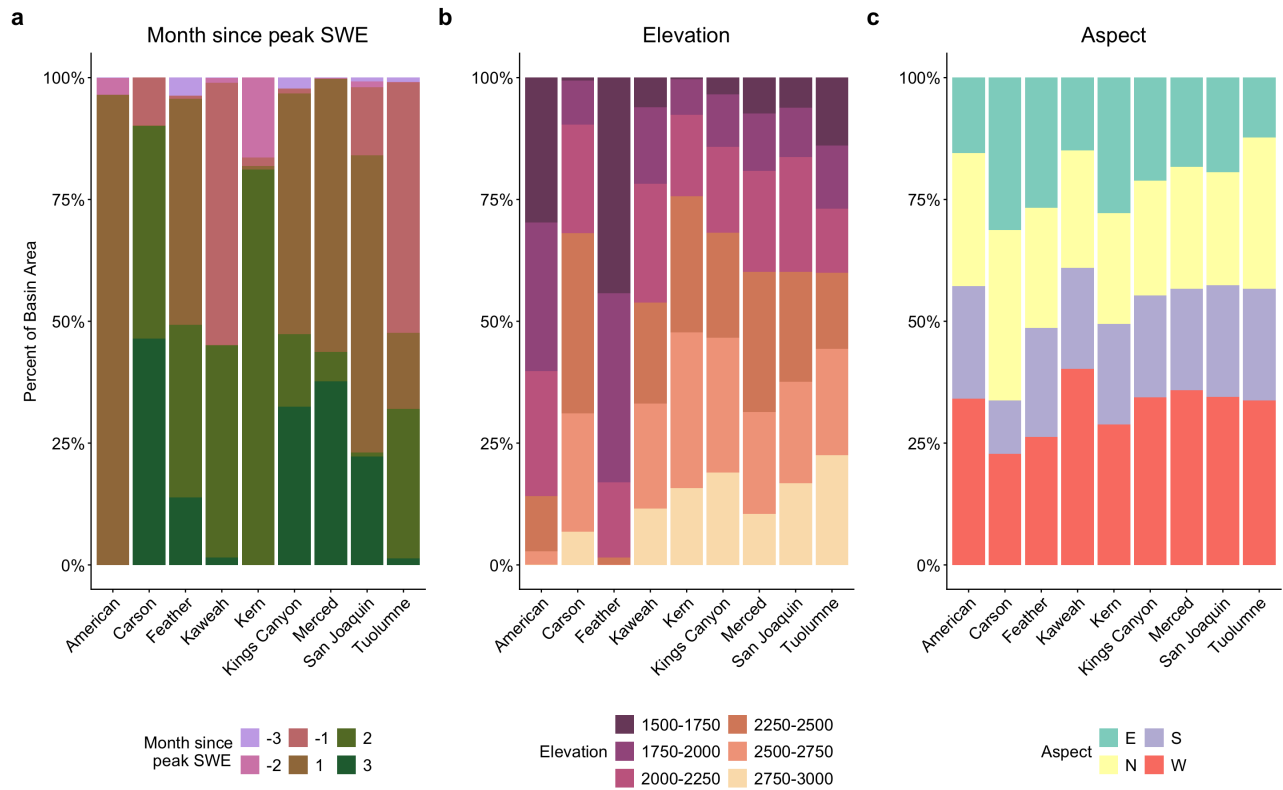


Figure S5. Characteristics of basin areas across Sierra Nevada watersheds. (a) Distribution of area flow by months since peak SWE for each basin. (b) Elevation distribution across basins. (c) Aspect distribution across basins.

Table S1. Basin information

Basin	ASO Basin Area (km ²)	Snow Zone Area (km ²)	% of the Basin in the snow zone	# of flights in each month since pSWE						Total # of flights
				-3	-2	-1	1	2	3	
American	3,268	2,476	76%	1	1	0	4	0	0	6
Carson	1,476	1,186	80%	0	0	1	2	2	4	9
Feather	8,367	6,520	78%	1	0	1	3	2	3	10
Kern	1,451	718	50%	0	1	2	1	1	1	6
Kaweah	4,171	3,072	74%	1	2	2	2	4	3	14
Kings Canyon	4,333	3,025	70%	2	0	3	4	3	3	15
Merced	1,779	1,363	77%	1	2	2	5	5	3	18
San Joaquin	4,241	3,107	73%	2	1	3	4	5	3	18
Tuolumne	2,919	2,371	81%	2	2	3	4	4	3	18
Total	32,009	23,844	75%	10	9	17	29	26	23	114