

Supplement of The Cryosphere, 19, 997–1012, 2025
<https://doi.org/10.5194/tc-19-997-2025-supplement>
© Author(s) 2025. CC BY 4.0 License.



Supplement of

Mapping subsea permafrost around Tuktoyaktuk Island (Northwest Territories, Canada) using electrical resistivity tomography

Ephraim Erkens et al.

Correspondence to: Ephraim Erkens (ephraimerkens@gmail.com)

The copyright of individual parts of the supplement might differ from the article licence.

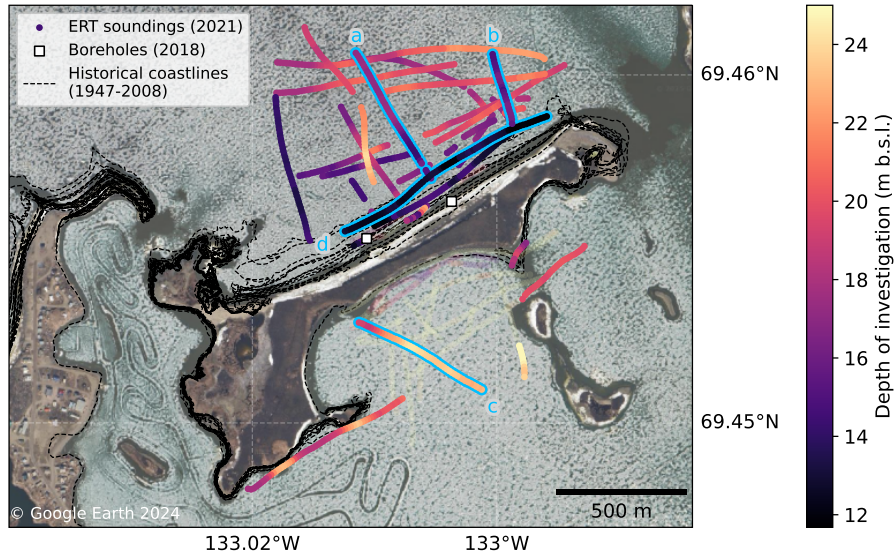


Figure S1. Map of the ERT surveys conducted around Tuktoyaktuk Island (analogous to Fig. 6a). The survey lines were color-coded with the depth of investigation (DOI) in meters below sea level (m b.s.l.). The DOI ranged from around 12 to around 25 m b.s.l. The DOI of profiles a, b and d on the northern side was shallower than in profile c on the southern side.