



Supplement of

Extending the range and reach of physically-based Greenland ice sheet sea-level projections

Heiko Goelzer et al.

Correspondence to: Heiko Goelzer (heig@norceresearch.no)

The copyright of individual parts of the supplement might differ from the article licence.

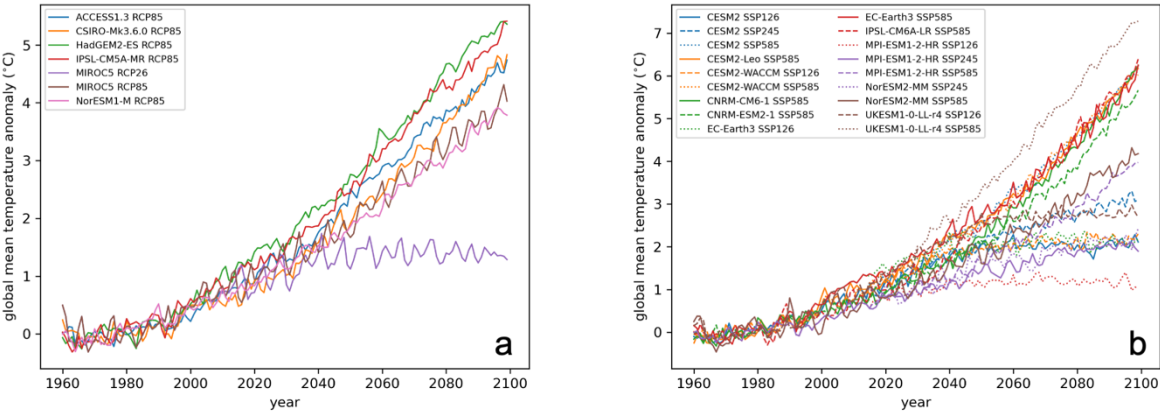


Figure S1. Global mean temperature anomalies to year 2100 relative to 1960-1989 for all ESM experiments used in this study split between CMIP5 (a) and CMIP6 (b).