



Near sea ice-free conditions in the northern route of the Northwest Passage at the end of the 2024 melt season

Stephen E. L. Howell¹, Alex Cabaj¹, David G. Babb², Jack C. Landy³, Jackie Dawson⁴, Mallik Mahmud⁵, and Mike Brady¹

¹Climate Research Division, Environment and Climate Change Canada, Toronto, ON, Canada

²Centre for Earth Observation Science, University of Manitoba, Winnipeg, MB, Canada

³Department of Physics and Technology, The Arctic University of Norway, Tromsø, Norway

⁴Department of Geography, University of Ottawa, Ottawa, ON, Canada

⁵Department of Geography, McGill University, Montreal, QC, Canada

Correspondence: Stephen E. L. Howell (stephen.howell@ec.gc.ca)

Received: 29 April 2025 – Discussion started: 2 June 2025

Revised: 28 October 2025 – Accepted: 17 November 2025 – Published: 11 December 2025

Abstract. The Northwest Passage through the Canadian Arctic Archipelago (CAA) provides a shorter transit route connecting the Atlantic Ocean to the Pacific Ocean but ever-present sea ice has prevented its practical navigation. Sea ice area in the northern route of the Northwest Passage on 30 September 2024 fell to a minimum of $4 \times 10^3 \text{ km}^2$ or $\sim 3\%$ of its total area the lowest ice area observed since 1960. Here, we investigate the processes responsible for the record low sea ice area in 2024 and show it was driven by a perfect sequence of thermodynamic and dynamic forcing events acting on an increasingly less resilient ice cover. Specifically, multi-year ice (MYI) only made up $\sim 10\%$ of total sea ice area at the start of the melt season that was characterized by an atmospheric circulation pattern that brought warm southerly air directly into the middle of CAA. This resulted in a record summer air temperature anomaly of 2.1°C that drove rapid melt and limited the import of ice from higher latitude regions to 50% of the 2016–2024 mean. Finally, positive air temperature anomalies upwards of 12°C persisted into October, extending the melt season further and delaying freeze-up by 1 month, compared to the 1991–2020 baseline. Overall, a series of specific and cascading thermodynamic and dynamic processes is required to melt all ice in the northern route of Northwest Passage as it did in 2024, therefore ice conditions along this route will likely continue to remain highly variable during the transition to a summer-time sea ice free Arctic.

1 Introduction

The Northwest Passage through the Canadian Arctic Archipelago (CAA) is a maritime trade route connecting the Atlantic Ocean to the Pacific Ocean. This long-desired trade route is shorter and potentially more economical than current maritime routes through the Panama Canal, Suez Canal, and around the island of Cape Horn. Ever-present sea ice has thus far prevented practical utilization of the Northwest Passage, which includes two primary routes; a preferred shorter deep-water draft northern route directly through the Parry Channel from Baffin Bay to the Beaufort Sea and a shallow water draft southern route that runs south of Victoria Island (Fig. 1). The trillion-dollar international shipping sector supports almost 90% of international trade globally is the “greenest” form of transport from the perspective of greenhouse gases per goods moved. Thus, shipping is vital to modern society and is expected to continue to be a major driver of economic development. Recent nationalistic rhetoric, geopolitical tensions in the middle east, Africa, and Russia are likely to affect supply-chain resilience in the near-term future and could drive interest and demand towards Arctic shipping routes including the Northwest Passage, especially as climate change continues influence reductions in sea ice across the Arctic.

Sea ice extent and area across the Arctic have been decreasing over the past 40+ years (Parkinson and DiGiro-lamo, 2021). In addition, the sea ice has become thinner and younger as thicker multi-year ice (MYI) has been replaced by

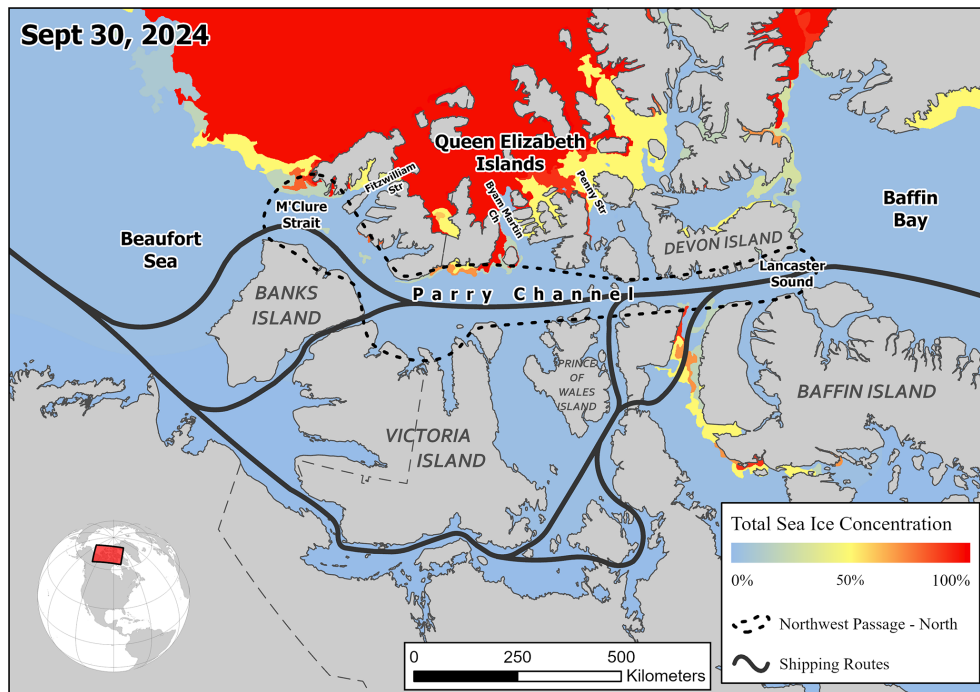


Figure 1. Map of the routes of the Northwest Passage through the Canadian Arctic Archipelago. Also shown is the total sea ice concentration (%) on 30 September 2024.

thinner first-year ice (FYI) (Comiso, 2012; Babb et al., 2023; Sumata et al., 2023; Babb and Howell, 2024; Krumpen et al., 2025). Future projections by the latest state-of-the-art climate models indicate that at about mid-century a sea ice-free Arctic will be realized (Notz and SIMIP Community, 2020; Jahn et al., 2024; Fol et al., 2025). As a result, many studies have suggested shipping through the Northwest Passage will be more feasible (Smith and Stephenson, 2013; Mudryk et al., 2021) although increasingly mobile sea ice may continue to present navigational safety challenges for operators (Howell and Haas 2015; Nicoll et al., 2025). Indeed, shipping activity has increased within the Canadian Arctic as sea ice has thinned (Glissenaar et al., 2023) and declined in area (Howell et al., 2023) but the northern route of the Northwest Passage is still typically avoided (Pizzolato et al., 2016; Dawson et al., 2018; Nicoll et al., 2024). This is because there are regions along the northern route of the Northwest Passage that contain high concentrations of MYI which is the most hazardous to ships during the summer months and a direct path east to west is typically not possible (Cook et al., 2024). These regions have been referred to as choke points and represent barriers to efficient or complete transit of the northern route of the Northwest Passage. Moreover, ice floes that are thicker than 4 m and more than 100 m wide, representing an impenetrable barrier to almost all ships, are still found within the northern route of the Northwest Passage (Haas and Howell, 2015).

Since 2007, sea ice area in the northern route of the Northwest Passage has been lower when compared to the longer-term observational record which begins in the 1960s (Tivy et al., 2011; Howell et al., 2023). Annual average air temperature in northern Canadian regions has increased by 2.3 °C over the period 1948–2016 (Zhang et al., 2019). However, warmer temperatures driving melt are often insufficient to clear the northern route of the Northwest Passage because generally-thicker sea ice is transported southward from higher latitudes and must also melt through completely (Howell et al., 2009, 2013). As a result, there has been considerable interannual variability in ice conditions within the northern route of the Northwest Passage, with exceptionally light ice observed in 1998 (Atkinson et al., 2006) and as far back as 1962 (Black, 1965; Tivy et al., 2011). 2007 was perhaps the first time in human memory that the northern route of Northwest Passage was virtually clear of ice (Howell et al., 2009). 2011 was even more dramatic with ice area considerably lower than 2007 marking the previous record low (Howell et al., 2013). At the end of September in 2024, there was virtually no sea ice present in the northern route of the Northwest Passage ($4 \times 10^3 \text{ km}^2$) marking the lowest ever observed area since 1960 (Fig. 1).

Here, we place the record low of 2024 in context within the longer-term record that extends back to 1960. We first discuss the long-term spatial and temporal variability of minimum sea ice area years within the northern route of the Northwest Passage. We then discuss the weekly evolution of sea ice area

in 2024 as compared to previous low ice years. Finally, we discuss the factors that contributed to the record low of 2024.

2 Data and methods

2.1 Digital ice charts

The primary dataset used in this analysis is ice concentration and area from the Canadian Ice Service (CIS) digital ice charts and is available at: <https://iceweb1.cis.ec.gc.ca/Archive/page1.xhtml?lang=en> (last access: 8 December 2025). For each available ice chart, we extracted the weekly time series of total and MYI area within the northern route of the Northwest Passage (see Fig. 1) from 1968 to 2024. The CIS digital ice charts are a weekly compilation that integrates all available real-time sea ice information from various satellite sensors, aerial reconnaissance, ship reports, operational model results and the expertise of experienced ice forecasters, since 1968 (Canadian Ice Service, 2007; Tivy et al., 2011). We also used digitized ice charts compiled from the Polar Continental Shelf Project (PCSP) from 1960–1974. As with the CIS ice charts, aerial surveys together with all available remotely sensed and ground observation data were used in their production (Lindsay, 1976, 1977). The main concern with using digital ice charts to quantify long-term change is that the source information used in ice chart preparation also changes with time (Canadian Ice Service, 2007) but this bias is unquantifiable. As a result, concentration estimates are potentially overestimated when satellite information was not routinely available. (i.e. the 1960s and 1970s). However, the majority of our analysis takes place in the RADARSAT era (i.e. 1995 to present) which greatly improves the quality of the ice information (Canadian Ice Service, 2007).

2.2 Ice area flux

We make use of the sea ice area flux record derived by Howell et al. (2024) and updated until September 2024 at the following gates: M'Clure Strait, Fitzwilliam Strait, Byam Martin Channel, and Penny Strait. The M'Clure Strait was selected to quantify the ice area flux from the Beaufort Sea and the Fitzwilliam Strait, Byam Martin Channel, and Penny Strait to quantify the ice area flux from the Queen Elizabeth Islands (Fig. 1). Briefly, synthetic aperture radar (SAR) imagery from RADARSAT-2, Sentinel-1, and the RADARSAT Constellation Mission (RCM) at HH polarization are ingested into the Environment and Climate Change Canada Automated Sea Ice Tracking System (ECCC-ASITS; Howell et al., 2022) that is based on the Komarov and Barber (2014) feature tracking algorithm. The resulting sea ice motion output is sampled across each gate together with ice concentration from the CIS ice charts in order to determine the sea ice area flux across each gate. For all gates, the sea ice area flux values were summed over each month from October 2016 to September 2024. Positive values indicate im-

port into the region and negative values indicate export out of the region. The monthly uncertainties are 4797 km² at the M'Clure Strait, 214 km² at Fitzwilliam Strait, 217 km² at Byam Martin Channel, and 257 km² at Penny Strait (Howell et al., 2024).

2.3 Melt onset timing

We estimated the timing of melt onset in the northern route of the Northwest Passage using the methodology Mahmud et al. (2016) applied to Sentinel-1 synthetic aperture radar (SAR) imagery from 2016–2024. Briefly, the approach utilizes a pixel-based threshold method, capitalizing on the time series C-band SAR imagery backscatter values. This algorithm effectively identifies melt onset timing on sea ice by analyzing backscatter variability exceeding specified threshold parameters compared to the mean winter backscatter. The melt onset timing is constrained using 2 m air temperature to prevent false detection. We computed the spatial mean melt onset date within the northern route of the Northwest Passage from 2016–2024.

2.4 ERA reanalysis and APP-x

We also made use of monthly sea level pressure (SLP), 2 m air temperature and total column vertically-integrated heat flux (eastward and northward) from ERA5 (Hersbach et al., 2023) available at <https://cds.climate.copernicus.eu/datasets/reanalysis-era5-single-levels-monthly-means> (last access: 8 December 2025). Vertically integrated heat flux refers to the vertical integral (over pressure levels) of horizontal dry heat (enthalpy) fluxes, and has units of W m⁻¹. Standardized anomalies are calculated from reanalysis-derived quantities by dividing the climatological anomalies by the standard deviation of the 1991–2020 climatology.

Finally, we used albedo from the extended Advanced Very High Resolution Radiometer (AVHRR) Polar Pathfinder (APP-x, Wang and Key, 2005) from 1982 to 2024 available at: <https://www.ncei.noaa.gov/access/metadata/landing-page/bin/iso?id=gov.noaa.ncdc:C00941> (last access: 8 December 2025). The data is available at a spatial resolution of 25 km and the uncertainty for albedo is 0.10 (Wang and Key, 2005).

3 Results and Discussion

3.1 Long term spatial and temporal variability in minimum sea ice area

The time series of the annual minimum sea ice area within the northern route of the Northwest Passage, from 1960 to 2024, is shown in Fig. 2. In the 1960s–1990s, the annual minimum ice area of $\sim 100 \times 10^3$ km² still covered ~ 60 % of the total area of the northern route of the Northwest Passage. Interannual variability (standard deviation of 32×10^3 km²)

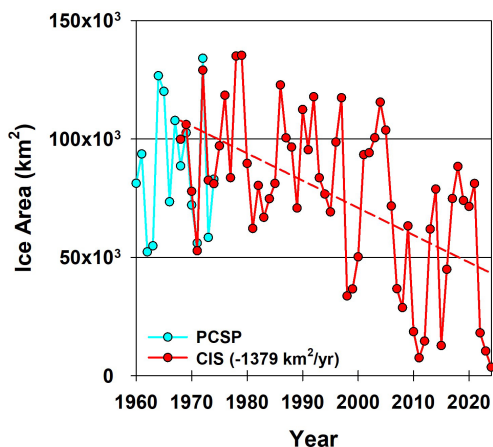


Figure 2. Time series of the week of minimum sea ice area in the northern route of the Northwest Passage from 1960–2024.

is considerable and ice area ranged from a maximum ice area of $135 \times 10^3 \text{ km}^2$ in 1979 to a minimum ice area of $4 \times 10^3 \text{ km}^2$ in 2024. The second lowest ice area was in 2011 at $8 \times 10^3 \text{ km}^2$ followed by 2023 at $10 \times 10^3 \text{ km}^2$. Over the entire period from 1960 to 2024 a decreasing trend is apparent and over the 1968–2024 period from the CIS ice charts, the weekly sea ice area has decreased at a rate of $1379 \text{ km}^2 \text{ yr}^{-1}$ (Fig. 2). Over the past 57 years the decline based on the CIS ice charts corresponds to a loss of $79 \times 10^3 \text{ km}^2$, which is $\sim 45\%$ of the total area ($175 \times 10^3 \text{ km}^2$) of the northern route of the Northwest Passage.

Interannual variability of sea ice area has been higher since 1998 (standard deviation of $33 \times 10^3 \text{ km}^2$) when compared to the early part of the record (standard deviation of $22 \times 10^3 \text{ km}^2$) with considerably larger sea ice area oscillations (Fig. 2). Interestingly, up until 1998 there was a slight increasing trend in sea ice area (Fig. 2). The anomalously low ice year of 1998 received considerable attention and the consensus was that low ice conditions within the northern route of the Northwest Passage and the broader CAA were a result of an extended melt season together with an atmospheric circulation pattern that prevented sea ice from being transported southward through the CAA (Jeffers et al., 2001; Atkinson et al., 2006; Alt et al., 2006; Howell et al., 2010). After several consecutive low ice years, the ice area eventually recovered with an annual minimum of $116 \times 10^3 \text{ km}^2$ in 2004 (Fig. 2). Recovery in the years following 1998 has been attributed to seasonal FYI survival (i.e. FYI aging) and thicker, more resilient sea ice being imported into the northern route of the Northwest Passage from the M'Clure Strait to the west and the Queen Elizabeth Islands to the north (Howell et al., 2023).

The spatial distributions of sea ice during the annual minimum for selected “low ice” years (here meaning: anomalously low for their decade) and the September 1991–2020 mean within the northern route of the Northwest Passage are

shown in Fig. 3. In the 1991–2020 mean, ice concentration typically remains high within the northwestern section of the Northwest Passage with lighter conditions found in the east (Fig. 3j). In 1962, 1971, 1983, 1998, and 2007, there was some ice congestion the middle of Parry Channel and/or at the entrance to M'Clure Strait, despite overall ice concentrations being low along the passage (Fig. 3a–e). These regions are known choke points within the Northwest Passage where MYI tends to accumulate despite low ice concentrations elsewhere or where MYI returns to first if they become cleared of thinner ice earlier in the summer (Cook et al., 2024). As result, Melling (2002) was the first to point out that persistent low ice conditions in the Northwest Passage would be difficult to achieve given that MYI gradually migrates southward through the CAA. Indeed, the amount of ice transiting southward from higher latitudes into the northern route of the Northwest Passage has reduced in magnitude since 2007 but there is no evidence of it stopping (Howell et al., 2023). However, for the record low year of 2024, as well as the low ice years of 2011 and 2023, low ice concentration was apparent across the entire route from east to west (Fig. 3f, h, and i). In these years, MYI transiting southward from higher latitudes was evidently insufficient to plug up the passage for the entire summer.

3.2 Weekly evolution of sea ice in 2024 and other light ice years

The weekly time series of sea ice area in the northern route of the Northwest Passage for the low ice years of (a) 2024, 2023, and 2011 (b) 2007 and 1998, and (c) 1983, 1971, and 1962 together with the 1991–2020 mean is shown in Fig. 4. For the 1991–2020 mean, sea ice area during the pre-melt period (winter) was $\sim 172 \times 10^3 \text{ km}^2$ (i.e. covering the entire region) which decreased gradually during the spring and summer months of May to September to $\sim 73 \times 10^3 \text{ km}^2$ and then increased again in mid-September with the onset of freeze-up (Fig. 4).

In 2024, sea ice area was already lower than the long-term mean during early summer, then rapidly declined until the end of August before gradually declining until the end of September, reaching the lowest observed sea ice area on record at $4 \times 10^3 \text{ km}^2$ (Fig. 4a). Particularly striking about 2024 was that freeze-up occurred considerably later (mid-October) when compared to other low ice years and the 1991–2020 mean (Fig. 4a). The previous record low year of 2011 declined earlier faster than in 2024 and ice area in 2011 was lower than 2024 when the minimum of $8 \times 10^3 \text{ km}^2$ was reached in mid-September (Fig. 4a). However, fall freeze-up started in mid-September in 2011 (Fig. 4a). Interestingly, the weekly evolution of 2023 tracked lower than both 2011 and 2024 for a 2 week period in August but then remained relatively steady at $10 \times 10^3 \text{ km}^2$ until freeze-up in early October (Fig. 4a). The decline in 2024 (as well as in 2023 and 2011) was more substantial than in both 2007 and 1998 which

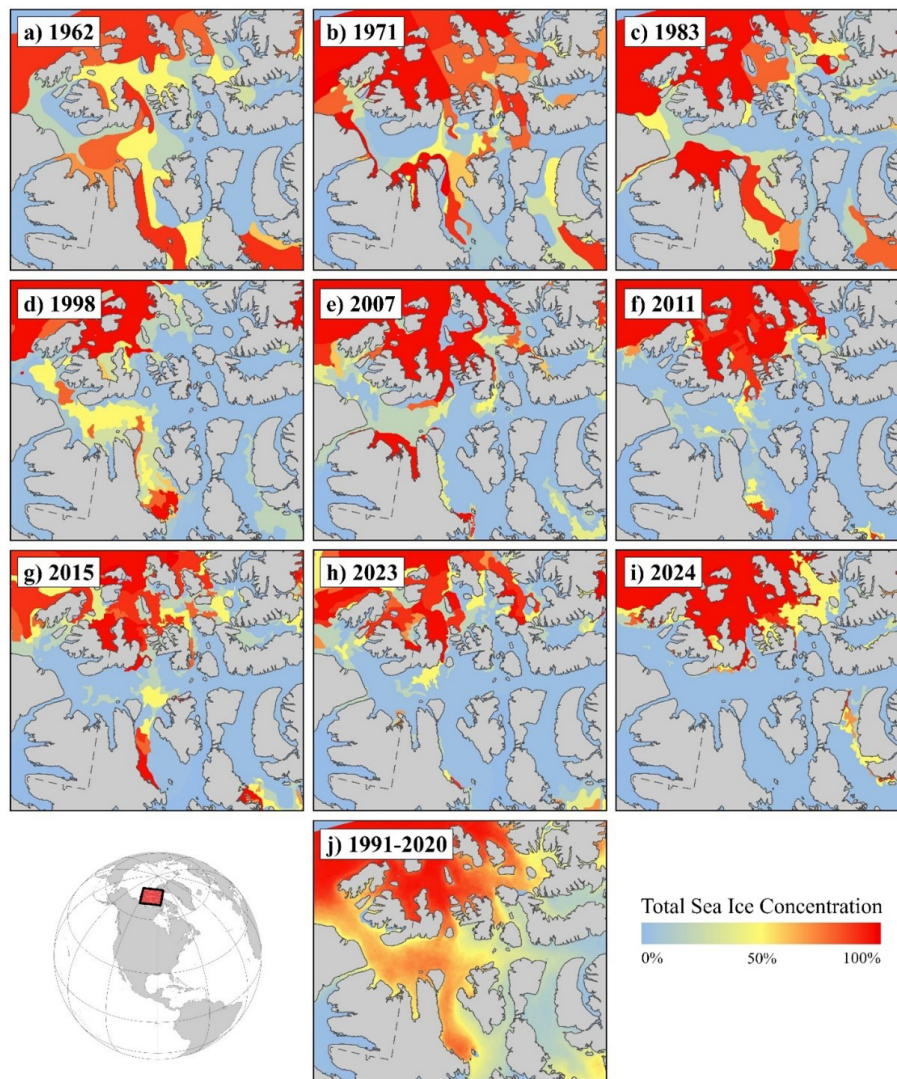


Figure 3. Spatial distribution of total ice concentration for the week of minimum sea ice area in the northern route of the Northwest Passage for (a) 1962, (b) 1971, (c) 1983, (d) 1998, (e) 2007, (f) 2011, (g) 2015, (h) 2023, (i) 2024, and (j) 1991–2020 mean.

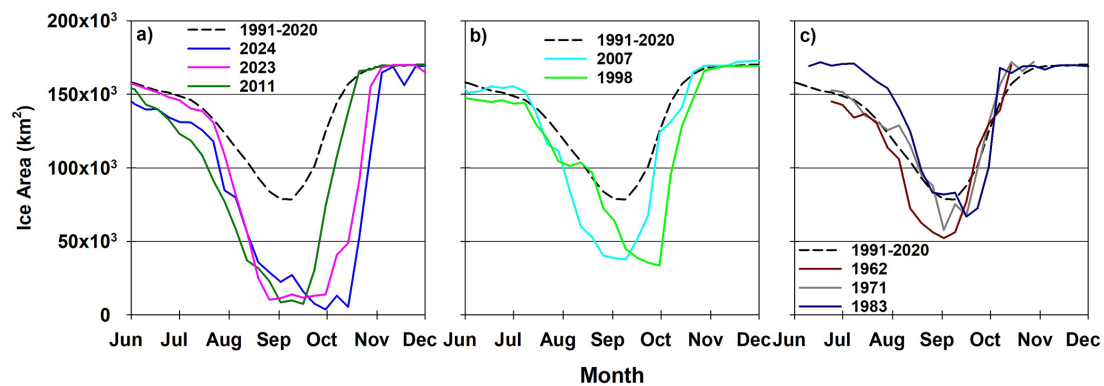


Figure 4. Weekly evolution of sea ice area in the northern route of the Northwest Passage for (a) 2024, 2023, and 2011, (b) 2007 and 1998, and (c) 1962, 1971, 1983. The dashed line represents the 1991–2020 mean weekly evolution of sea ice area.

reached minimum ice areas of 38×10^3 and 34×10^3 km², respectively (Fig. 4a and b). Compared to the light ice years in the early part of the CIS record (1962, 1971, and 1983), 2024 season was remarkable in the respect that summer minimum ice area was $> 50 \times 10^3$ km² lower, equivalent to $\sim 30\%$ of the area of the entire passage (Fig. 4a and c).

MYI area in the northern route of the Northwest Passage made up $\sim 36\%$ of the total ice area at the start of the melt season for the 1991–2020 mean and remained relatively stable throughout at $\sim 52 \times 10^3$ km² with a slight increase at the end of September and start of October (Fig. 5a). The latter increase has been associated with ice import from higher latitudes together with seasonal FYI surviving the melt season and being promoted to MYI (Howell et al., 2023). Interestingly, this end-of-summer uptick in MYI did not follow the climatology in any low-ice year after 1998 but did in the earlier low-ice years of 1971 and 1983 (Fig. 5). In 2024, MYI only made up $\sim 10\%$ of total sea ice area at the start of the melt season. During the 2024 melt season a slight increase in MYI occurred in early August but it was not sustained and MYI reached almost zero at the end of the melt season (Fig. 5a). For the previous record low year of 2011, MYI area at the start of the melt season was larger than in 2024 at 16% but it steadily declined to 2×10^3 km² with some replenishment during the early fall freeze-up season (Fig. 5a). 2023 started the melt season with only 6% MYI showed but an overall increase occurred during the summer and fall (Fig. 5a). Compared to the low ice years since 2007, in earlier years a key characteristic was that more MYI was present at the start of the melt season that did not decrease considerably during the melt season (Fig. 5b and c). The exception was 1998 which had the largest amount of MYI present at the start of the melt season at about 50% that declined considerably but still remained high enough until mid-October to prevent the passage from becoming navigable (Fig. 5b).

Sea ice area at the end of winter in 2024 was not significantly different to other years between 1991 and 2023, and the fraction of this ice that was MYI was not the lowest on record. However, the rapid rate of sea ice loss between July and September, the continued loss until mid-October, and near-zero MYI replenishment in summer and fall, made the 2024 season remarkable with respect to other years. We now look at the driving factors pushing 2024 beyond the record low of 2011, and how the driving thermodynamic and dynamic processes in 2024 compared to other light ice years.

3.3 Thermodynamic and dynamic forcing of summer sea ice area loss

It has been previously demonstrated that low ice years within the northern route of the Northwest Passage are driven by rapid melt associated with anomalously warm air temperatures together with an atmospheric circulation pattern that prevents sea ice from higher latitude regions from being imported into the region (Howell et al., 2009, 2013). The

amount of MYI at the start of the melt season is also important as it is thicker and takes longer to melt through (Howell et al., 2009). Indeed, since 2007, low ice years in the northern route of the Northwest Passage have been a more common occurrence as a result of less MYI (Howell et al., 2023) but 2024 was remarkable considering the ice area almost reached zero at the end of the melt season. We suggest the 2024 record low in the northern route of the Northwest Passage was the result of the perfect sequence of forcing processes.

3.3.1 Thermodynamic forcing during light sea ice years

The spatial distribution of July to September (JAS) mean sea level pressure (SLP) anomalies over the Arctic is shown in Fig. 6. 2024 was characterized by strong negative SLP anomalies over the western CAA (i.e. Banks Island and Victoria Island) that facilitated the flow of warm southerly air directly into the middle of the CAA (Fig. 6). Accordingly, warmer air temperature anomalies were present across the southern regions of the CAA, including the northern route of the Northwest Passage in 2024 (Fig. 7). This contrasts previous light ice years that are typically characterized by high SLP anomalies over Greenland (i.e. 1962, 1998, 2015, and 2023) that also facilitate the transport of warm southerly air into the CAA (Atkinson et al., 2006; Howell et al., 2010, 2013) (Figs. 6 and 7). Indeed, warmer air temperatures were more widespread across the Arctic in 2023 however, the concentrated low SLP anomalies during JAS over the southwestern CAA in 2024 more effectively transported warm air into the southern CAA compared to 2023 (Fig. 8).

The time series of mean JAS air temperature anomalies over the southern CAA (i.e. regions in and to the south of Parry Channel) indicates that 2024 did in fact experience the highest temperature anomaly of 2.1°C, eclipsing previous years of 2023 (+1.8°C), 2011 (+1.5°C), and 1998 (+1.3°C) (Fig. 9). In almost all the low ice years, there was a positive summer air temperature anomaly over the CAA, although it was slightly negative in the earliest years of 1962 and 1971, indicating that temperatures are not solely responsible for low ice years in the northern route of the Northwest Passage. Over the period of 1982–2024, air temperature in the southern CAA regions has increased by $0.45^\circ\text{C decade}^{-1}$, increasing the likelihood of anomalously warm summers driving low ice years. Looking at the time series of mean JAS albedo anomalies indicates that 2024 ranked 2nd lowest at -0.16 with 2011 being the lowest at -0.15 and an overall decreasing trend of $0.02^\circ\text{C decade}^{-1}$ from 1982–2024 (Fig. 9). The statistically significant detrended correlation between the minimum sea ice area in northern route of the Northwest Passage and air temperature is -0.77 and -0.82 for albedo. Given all three of these variables have also experienced significant negative trends over the period of 1982–2024 suggests that minimum sea ice area in the northern route of the Northwest Passage is strongly related to warmer temperatures and lower albedo,

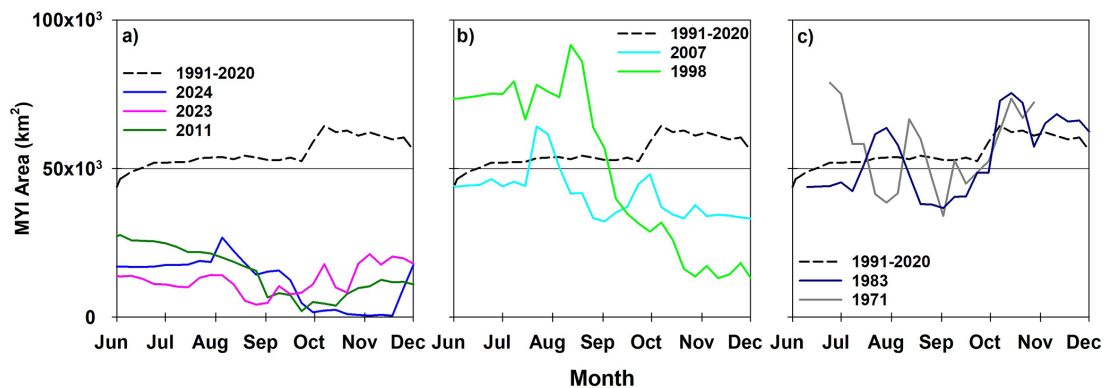


Figure 5. Weekly evolution of multi-year ice area in the northern route of the Northwest Passage for (a) 2024, 2023, and 2011, (b) 2007 and 1998, and (c) 1971 and 1983. The dashed line represents the 1991–2020 mean weekly evolution of multi-year ice area.

over decadal timescales and interannually. The record low year of 2024 was associated with the highest JAS anomaly together with the second lowest albedo anomaly that together helped enhance the sea ice albedo-feedback that facilitated the rapid melt in July and August (Fig. 4a). Positive sea surface temperature (SST) anomalies within the northern route of the Northwest Passage were also present during September (Timmermans and Labe, 2025) providing additional support for the enhanced sea ice albedo-feedback during the summer months.

Although the rate of sea ice decline in 2024 slowed towards the end of August, it continued to decline well into October which is indicative of an extended melt season (i.e. earlier melt onset and/or later freeze-onset) (Fig. 4a). An earlier melt onset results in more energy absorbed into the sea ice during the melt season and helps enhance melt (Perovich et al., 2007). The timing of melt onset was not particularly early in 2024 when compared to the longer period of 2015–2024 (Fig. 10) however, freeze-up in 2024 occurred almost 1 month later than the 1991–2020 mean (Fig. 4). In fact, October air temperatures over the southern CAA experienced positive anomalies of upwards of 12°C (Fig. 11).

From the perspective of thermodynamic processes, 2024 was remarkable including a rapid melt period and an extended melt season pushing ice area to further extreme lows than previously observed. The coupling of a rapid melt event together with an extended melt season were two key thermodynamic factors responsible for 2024 reaching near zero ice area in the northern route of Northwest Passage.

3.3.2 Dynamic forcing during light ice years

Ice dynamics can encourage light ice conditions in the northern route of the Northwest Passage when ice import is low from adjacent regions (i.e. M'Clure Strait or the Queen Elizabeth Islands). Conversely, ice dynamics can prevent light ice conditions by facilitating ice import from these adjacent regions. The time series of the total May to September sea

ice area flux for the M'Clure Strait and the Queen Elizabeth Islands from 2016 to 2024 is shown in Fig. 12. The weekly time series of MYI presented in Fig. 5 can also provide insight into ice import/export dynamic processes within the northern route of the Northwest Passage as increases in MYI during the melt season or fall are typically associated with import from either the M'Clure Strait or the Queen Elizabeth Islands or both. An average $10 \times 10^3 \text{ km}^2$ sea ice was imported into the northern route of the Northwest Passage from the M'Clure Strait and $14 \times 10^3 \text{ km}^2$ from the Queen Elizabeth Islands for a total of $24 \times 10^3 \text{ km}^2$ over the period 2016–2024. In 2024, only $2 \times 10^3 \text{ km}^2$ of ice was imported from the M'Clure Strait and $9 \times 10^3 \text{ km}^2$ from Queen Elizabeth Islands for a total of $11 \times 10^3 \text{ km}^2$ (Fig. 12), $> 50\%$ below the average. The majority of this 2024 import occurred in August as supported by the 2024 weekly time series of MYI (Fig. 5a). 2023 experienced even less ice import from the M'Clure Strait and Queen Elizabeth Islands at $6 \times 10^3 \text{ km}^2$ but record low ice conditions were averted because heat transport into the CAA was lower than in 2024 and the MYI area was higher (Figs. 8 and 12). A lack of ice import alone is not sufficient to drive low ice area in the northern route of the Northwest Passage, rather it appears that – under current conditions within the CAA – that a combination of dynamic and thermodynamic factors must align. Although ice import during 2024 was not the lowest over the period from 2016–2024 it was below average and that combined with the strong thermodynamic forcing (Fig. 8) quickly ablated any imported ice leading to record low ice area conditions.

Comparing the ice dynamics of 2024 to the previous record low of 2011 indicates a similar process of limited import of ice during the melt season however, in 2011 ice area began to increase in late-September appreciably whereas in 2024 no increases were observed until December (Fig. 5). Sea ice motion is typically parallel to the SLP isobars (Thorndike and Colony, 1982) and Fig. 6 indicates that although the SLP anomalies over the CAA are consider-

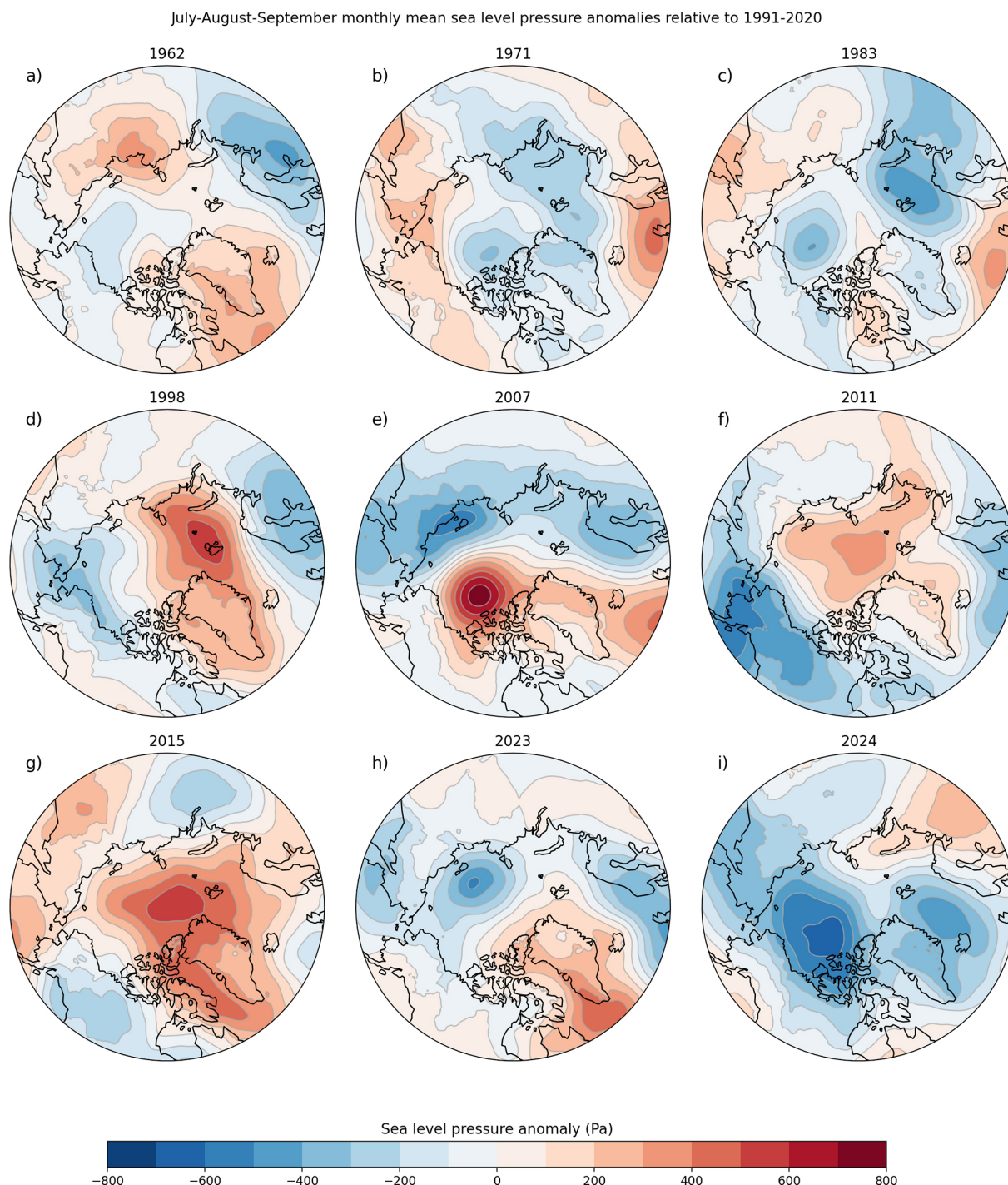


Figure 6. Spatial distribution of 3 month mean July, August, and September sea level pressure (SLP) anomalies for (a) 1962, (b) 1971, (c) 1983, (d) 1998, (e) 2007, (f) 2011, (g) 2015, (h) 2023, and (i) 2024. Anomalies are calculated with respect to the 1991–2020 July–August–September average.

ably different in 2024 compared to 2011, both acted to reduce the import of sea ice into the northern route of the Northwest Passage (Fig. 6). In fact, compared to other low ice years in the northern route of the Northwest Passage only JAS SLP in 2007 was conducive to ice area import. Specifically, the high

SLP anomalies over the Beaufort Sea in 2007 was found to drive sea ice into the northern Queen Elizabeth Islands and subsequently southward into the northern route of the Northwest Passage (Howell et al., 2009).

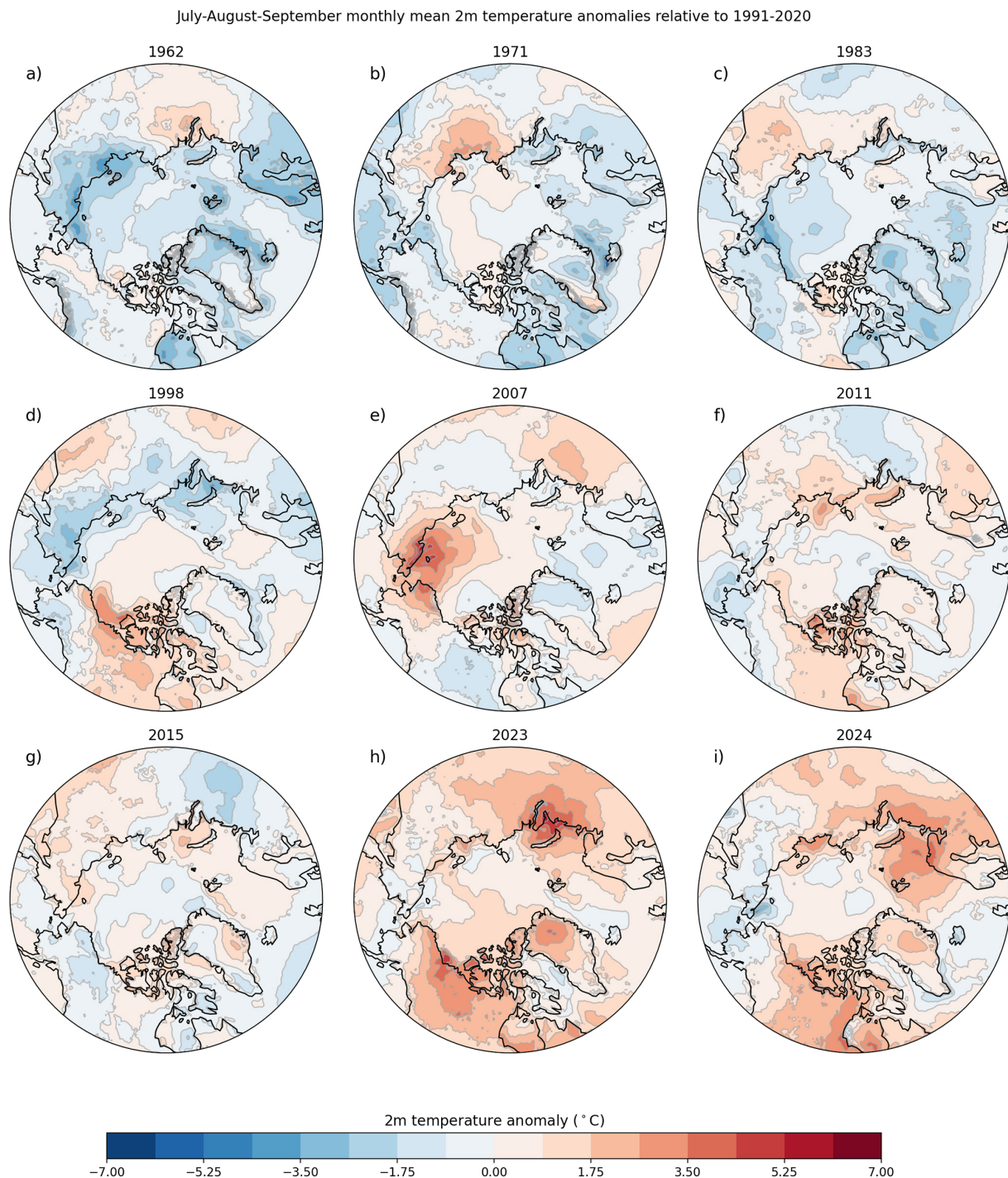


Figure 7. Spatial distribution of mean July, August, and September 2 m air temperature anomalies for (a) 1962, (b) 1971, (c) 1983, (d) 1998, (e) 2007, (f) 2011, (g) 2015, (h) 2023, and (i) 2024. Anomalies are calculated with respect to the 1991–2020 July–August–September average.

3.4 Preconditioning

Another important characteristic that facilitates the clearing of the northern route of the Northwest Passage is the amount of MYI within the region because it is thicker and more resilient to melt (Howell et al., 2009). The resilience

of MYI is best exemplified in 1998 when the northern route of the Northwest Passage contained 50 % MYI at the start of the melt season that reduced the rate of ice loss (Fig. 5b) despite anomalously high air temperatures during the summer months (Fig. 8). MYI in both the southern and northern routes of the Northwest Passage have decreased by 33 %

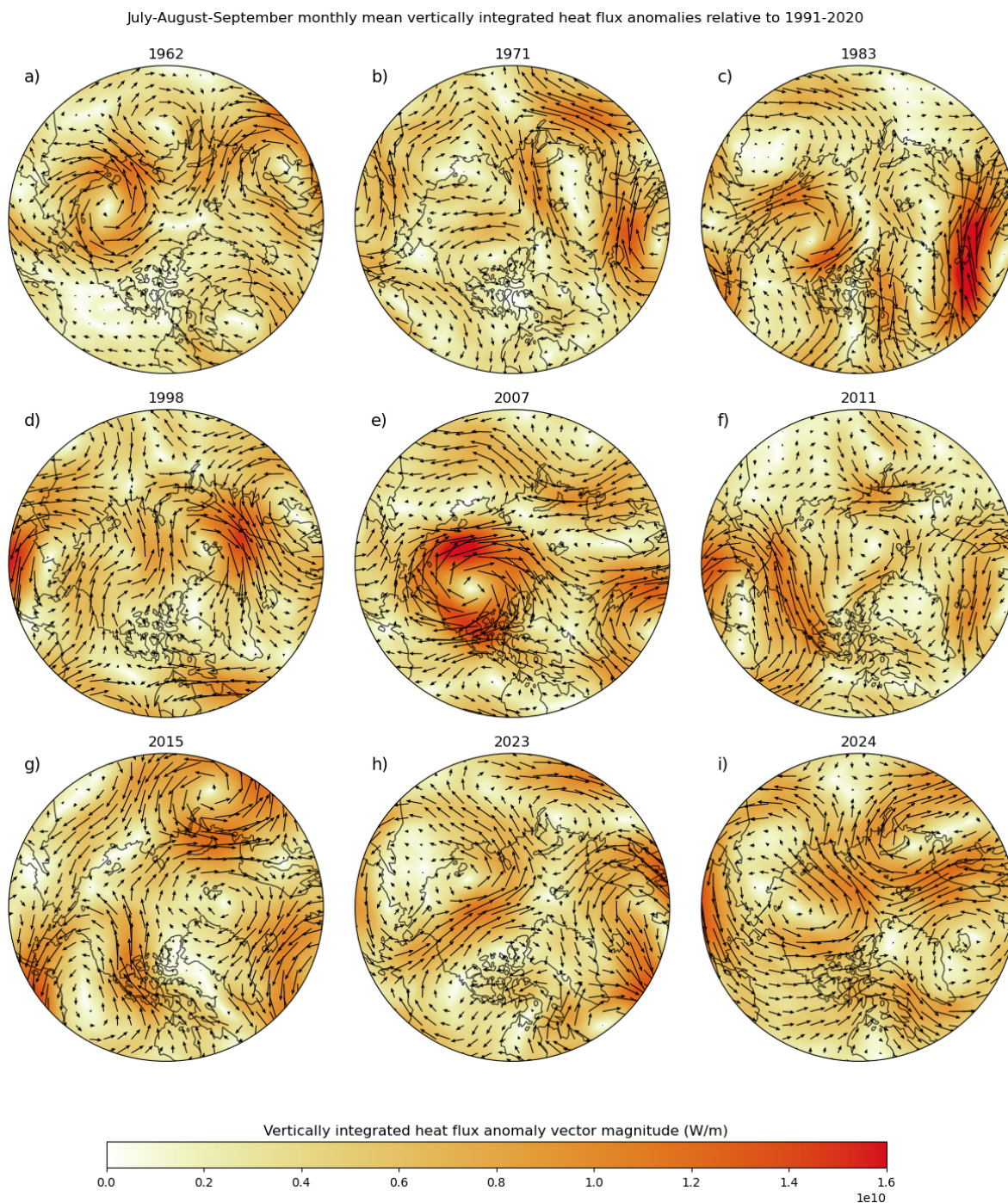


Figure 8. Spatial distribution of mean July, August, and September vertically integrated heat flux anomalies for (a) 1962, (b) 1971, (c) 1983, (d) 1998, (e) 2007, (f) 2011, (g) 2015, (h) 2023, and (i) 2024. Anomalies are calculated with respect to the 1991–2020 July–August–September average. The magnitude is calculated as the vector magnitude of the northward and eastward anomalies.

from 2007 to 2020 relative to the 1991–2020 climatology (Howell et al., 2023). In 2024, the northern route of the Northwest Passage only contained about 10 % MYI (compared to ~ 30 % on average since 1991) with the remaining 90 % being made up of seasonal FYI at the start of the melt season and, as a result, 2024 was certainly preconditioned

to experience rapid ice area loss as and enhanced total melt from an extended melt season.

The thickness of the ice within the northern route of the Northwest Passage is also important because thinner ice will melt more rapidly than thicker ice under the same positive thermodynamic forcing. Pre-melt FYI thickness within the

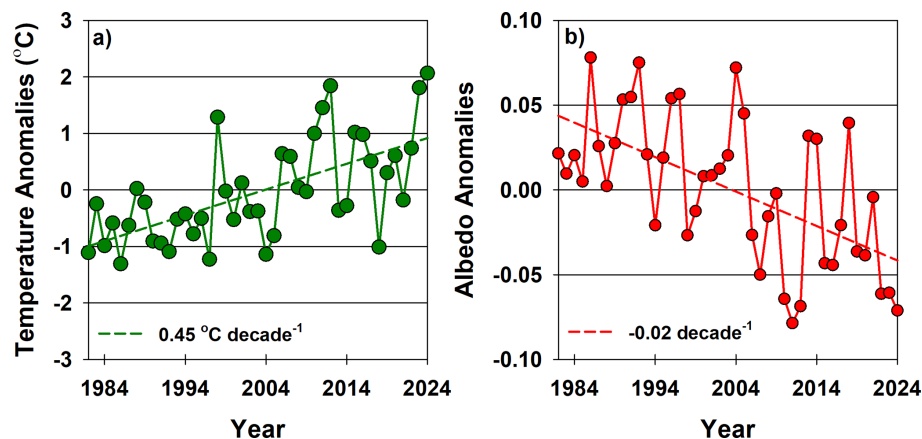


Figure 9. Time series of (a) ERA5 2 m air temperature anomalies and (b) APP-x albedo anomalies from 1982–2024 in the southern region of the Canadian Arctic Archipelago.

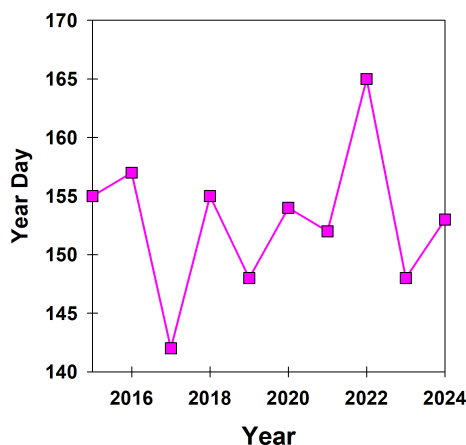


Figure 10. Time series of the timing of melt onset in the northern route of the Northwest Passage from 2015–2024.

northern route of the Northwest Passage has likely decreased in recent years as Howell et al. (2016) found that maximum landfast FYI thickness at selected sites within the CAA decreased by ~ 25 cm since the late 1950s. MYI in the Arctic Ocean is also unlikely to be as thick now as it was historically, because it is generally younger (2 or 3 years of aging, rather than 2–6+ years historically) and has experienced significant year-on-year melting (e.g. Kwok, 2018; Kacimi and Kwok, 2022; Glissenaar et al., 2023; Sumata et al., 2023; Krumpfen et al., 2025). Ice thickness observations are limited within the northern route of the Northwest Passage except for sporadic surveys conducted in 2011 and 2015 which do indicate the presence of thick ice (e.g. Haas and Howell, 2015) however, it is impossible to quantify how these years compare over a long-term record. We can reasonably assume that the MYI present in the northern route of the Northwest Passage in recent years is thinner and less resilient, considering

a wide-spread reduction in pan-Arctic sea ice thickness over recent decades.

4 Conclusions

At the end of the 2024 melt season, there was virtually no sea ice present along the northern route of the Northwest Passage. 2024 had the lowest observable ice area recorded since region-wide records began in 1960. This extreme event was driven by the coupling of (i) rapid July–August melt, (ii) reduced ice import from higher latitude regions, and (iii) a 1 month extended melt season, together with (iv) a now-common, lower resilience FYI-dominated sea ice cover at the start of the melt season. Specifically, strong negative SLP anomalies over the western CAA and Beaufort Sea facilitated the flow of warm southerly air directly into the middle of CAA resulting in a record summer air temperature anomaly of $+2.1$ °C that drove rapid melt. The same prevailing southerly winds only facilitated the net import of 11×10^3 km² of ice from higher latitude regions, 50 % less than the 2016–2024 mean. This was followed by an extended melt season where freeze-up was delayed by 1 month as a result of unprecedented $+12$ °C air temperature anomalies in October.

The individual processes of rapid melt, an extended melt season, limited southward import and a less resilient spring ice cover have all occurred before and are unique characteristics of previous low ice area years. The difference with 2024 was that all four occurred together whereas in previous years a maximum of three occurred together. For instance, 2011 experienced rapid melt, limited ice import together with less resilient spring ice but did not experience an extended melt season, and ice area began to increase again in late-September shortly after the annual minimum. 1998 experienced limited ice import and a long melt season, but the ice cover in the passage, composed of 50 % MYI in spring, was more resilient

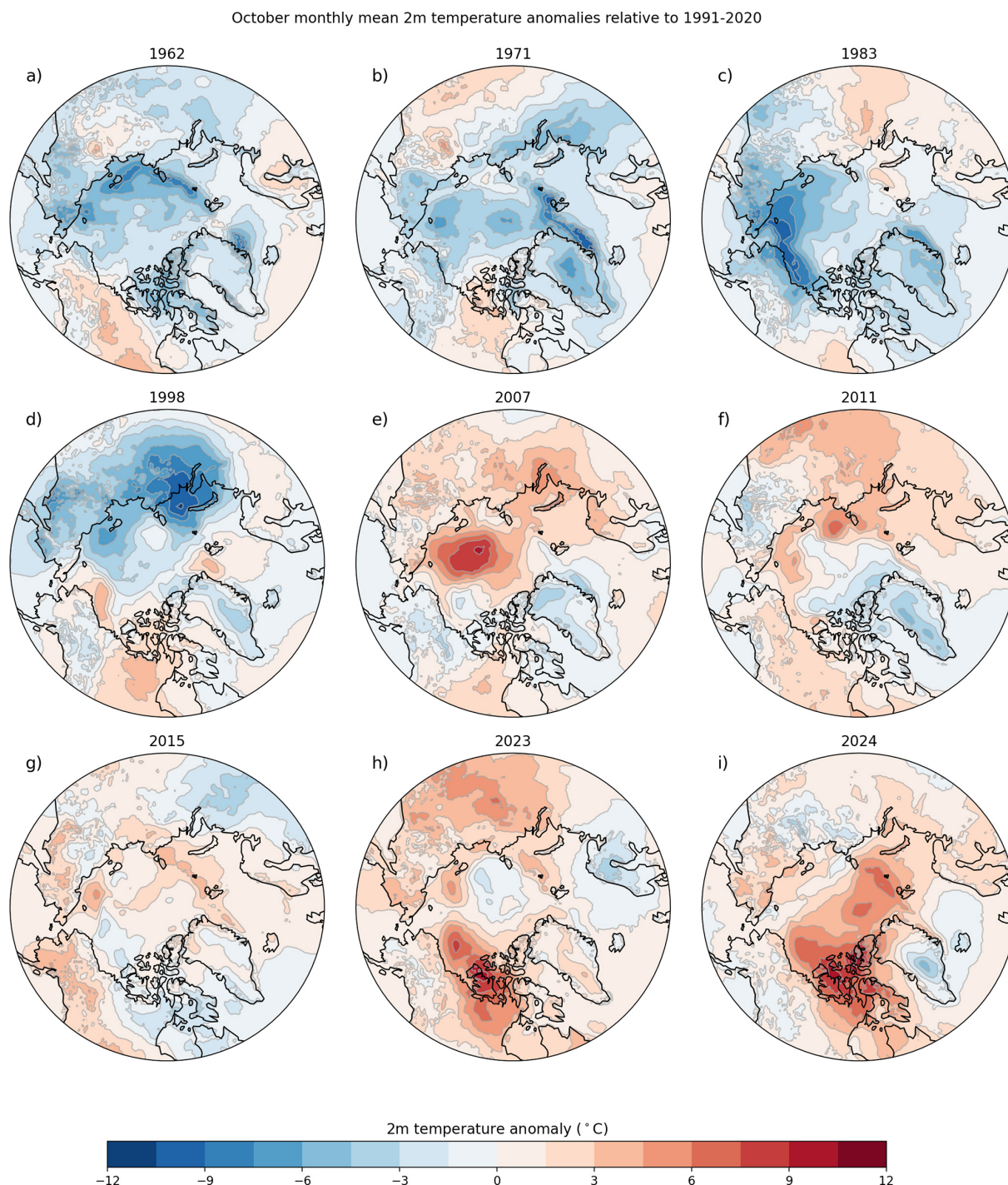


Figure 11. Spatial distribution of mean October 2 m air temperature anomalies for (a) 1962, (b) 1971, (c) 1983, (d) 1998, (e) 2007, (f) 2011, (g) 2015, (h) 2023, and (i) 2024. Anomalies are calculated with respect to the 1991–2020 July–August–September average.

during the melt season. 2007 experienced rapid melt together with less resilient ice but ice import during the melt season prevented record low conditions.

In a warmer Arctic with a permanently lower resilience ice cover, sea ice within the northern route of the Northwest Passage is more susceptible to anomalous thermodynamic and

dynamic forcing events that facilitate low ice years. However, in order for the northern route of the Northwest Passage to clear completely, several thermodynamic and dynamic processes need to occur in sequence. Even low-ice years that do not lead to a completely clear the northern route of the Northwest Passage still require certain driving thermodynamic and

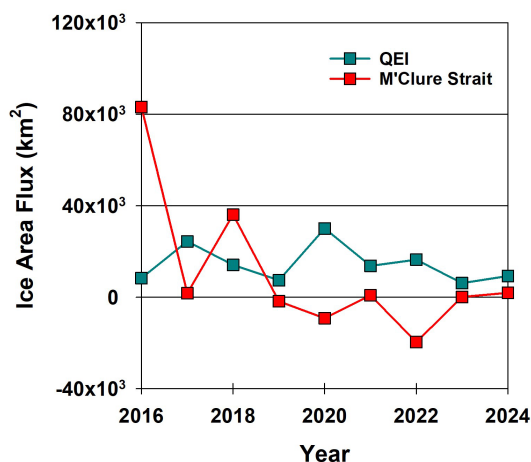


Figure 12. Time series the total May to September sea ice area flux at the M'Clure Strait and the Queen Elizabeth Island (QEI) southward gates from 2016 to 2024. Positive values indicate import and negative values indicate export.

dynamic processes to occur. Although some of these conditions are relatively predictable such as a low resilience ice cover or a relatively warmer summer air temperatures, others such as an extended melt season and ice dynamics are not (Howell et al., 2020). Therefore, predicting ice conditions in the northern route of the Northwest Passage at leads times of several months remains difficult. Ice conditions along the northern route of the Northwest Passage will likely continue to remain very challenging considering ongoing variability during the transition to a summertime sea ice-free conditions which will continue to present significant risks to both reliable and safe navigation.

Data availability. Data access for the monthly sea ice area flux and melt onset timing via Environment and Climate Change Canada's Open Data Catalogue is available at <https://crd-data-donnees-rtc.ec.gc.ca/CPS/products/IceFlux/Publications/Fluxes-MeltOnset-TheCryosphere-NWP-2025.xlsx> (Howell et al., 2025). PCSP ice charts are not yet publicly available but can be provided by contacting the SELH via email.

Author contributions. SELH wrote the manuscript with input from AC, DGB, JCL, JD, MM, and MB. SELH, AC, and MB performed the analysis. MM provided the melt onset data.

Competing interests. At least one of the (co-)authors is a member of the editorial board of *The Cryosphere*. The peer-review process was guided by an independent editor, and the authors also have no other competing interests to declare.

Disclaimer. Publisher's note: Copernicus Publications remains neutral with regard to jurisdictional claims made in the text, published maps, institutional affiliations, or any other geographical representation in this paper. While Copernicus Publications makes every effort to include appropriate place names, the final responsibility lies with the authors. Views expressed in the text are those of the authors and do not necessarily reflect the views of the publisher.

Acknowledgements. David G. Babb is supported by the Canada Excellence Research Chair in Arctic Ice, Freshwater Marine Coupling and Climate Change held by D. Dahl-Jensen at the University of Manitoba.

Review statement. This paper was edited by Jari Haapala and reviewed by two anonymous referees.

References

- Alt, B., Wilson, K., and Carrieres, T.: A case study of old ice import and export through Peary and Sverdrup channels in the Canadian Arctic Archipelago: 1998–2004, *Annals of Glaciology*, 44, 329–338, <https://doi.org/10.3189/172756406781811321>, 2006.
- Atkinson, D. E., Brown, R., Alt, B., Agnew, T., Bourgeois, J., Burgess, M., Duguay, C., Henry, G., Jeffers, S., Koerner, R., Lewkowicz, A. G., McCourt, S., Melling, H., Sharp, M., Smith, S., Walker, A., Wilson, K., Wolfe, S., Woo, M.-K., and Young, K. L.: Canadian cryospheric response to an anomalous warm summer: A synthesis of the climate change action fund project "The State of the Arctic Cryosphere During the Extreme Warm Summer of 1998", *Atmosphere-Ocean*, 44, 347–375, <https://doi.org/10.3137/ao.440403>, 2006.
- Babb, D. G. and Howell, S. E. L.: The loss of multiyear sea ice in the Arctic, *Reference Module in Earth Systems and Environmental Sciences*, <https://doi.org/10.1016/B978-0-323-85242-5.00009-9>, 2024.
- Babb, D. G., Galley, R. J., Kirillov, S., Landy, J. C., Howell, S. E. L., Stroeve, J. C., Meier, W., Ehn, J. K., and Barber, D. G.: The stepwise reduction of multiyear sea ice area in the Arctic Ocean since 1980, *Journal of Geophysical Research: Oceans*, 128, <https://doi.org/10.1029/2023JC020157>, 2023.
- Black, W. A.: Sea ice survey, Queen Elizabeth Islands Region summer 1962, *Geographical paper no. 39*, Queens Printer, Ottawa, Ont., Canada, 44 pp., <https://publications.gc.ca/site/eng/9.883533/publication.html> (last access: 8 December 2025), 1965.
- Canadian Ice Service (CIS): Regional charts: History, accuracy, and caveats, *Can. Ice Serv. Archive Doc. Ser. 1*, Gatineau, Que., Canada, http://ice.ec.gc.ca/IA_DOC/cisads_no_001_e.pdf (last access: 8 December 2025), 2007.
- Comiso, J. C.: Large decadal decline of the Arctic multiyear ice cover, *Journal of Climate*, 25, 1176–1193, <https://doi.org/10.1175/JCLI-D-11-00113.1>, 2012.
- Cook, A. J., Dawson, J., Howell, S. E. L., Holloway, J. E., and Brady, M.: Sea ice choke points reduce the length of the shipping season in the Northwest Passage, *Communications, Earth and Environment*, 5, 362, <https://doi.org/10.1038/s43247-024-01477-6>, 2024.

- Dawson, J., Pizzolato, L., Howell, S. E. L., Copland, L., and Johnston, M. E.: Temporal and Spatial Patterns of Ship Traffic in the Canadian Arctic from 1990 to 2015, *Arctic*, 71, 15, <https://doi.org/10.14430/arctic4698>, 2018.
- Fol, M., Tremblay, B., Pfirman, S., Newton, R., Howell, S., and Lemieux, J.-F.: Revisiting the Last Ice Area projections from a high-resolution Global Earth System Model, *Communications, Earth and Environment*, 6, 46, <https://doi.org/10.1038/s43247-025-02034-5>, 2025.
- Glissenaar, I. A., Landy, J. C., Babb, D. G., Dawson, G. J., and Howell, S. E. L.: A long-term proxy for sea ice thickness in the Canadian Arctic: 1996–2020, *The Cryosphere*, 17, 3269–3289, <https://doi.org/10.5194/tc-17-3269-2023>, 2023.
- Haas, C. and Howell, S. E. L.: Ice thickness in the Northwest Passage, *Geophysical Research Letters*, 42, 7673–7680, <https://doi.org/10.1002/2015GL065704>, 2015.
- Hersbach, H., Bell, B., Berrisford, P., Biavati, G., Horányi, A., Muñoz Sabater, J., Nicolas, J., Peubey, C., Radu, R., Rozum, I., Schepers, D., Simmons, A., Soci, C., Dee, D., and Thépaut, J.-N.: ERA5 monthly averaged data on single levels from 1940 to present, Copernicus Climate Change Service (C3S) Climate Data Store (CDS), <https://doi.org/10.24381/cds.f17050d7>, 2023.
- Howell, S. E. L., Duguay, C. R., and Markus, T.: Sea ice conditions and melt season duration variability within the Canadian Arctic Archipelago: 1979–2008, *Geophysical Research Letters*, 36, 2009GL037681, <https://doi.org/10.1029/2009GL037681>, 2009.
- Howell, S. E. L., Tivy, A., Agnew, T., Markus, T., and Derksen, C.: Extreme low sea ice years in the Canadian Arctic Archipelago: 1998 versus 2007, *Journal of Geophysical Research*, 115, C10053, <https://doi.org/10.1029/2010JC006155>, 2010.
- Howell, S. E. L., Wohlleben, T., Komarov, A., Pizzolato, L., and Derksen, C.: Recent extreme light sea ice years in the Canadian Arctic Archipelago: 2011 and 2012 eclipse 1998 and 2007, *The Cryosphere*, 7, 1753–1768, <https://doi.org/10.5194/tc-7-1753-2013>, 2013.
- Howell, S. E. L., Laliberté, F., Kwok, R., Derksen, C., and King, J.: Landfast ice thickness in the Canadian Arctic Archipelago from observations and models, *The Cryosphere*, 10, 1463–1475, <https://doi.org/10.5194/tc-10-1463-2016>, 2016.
- Howell, S. E. L., Scharien, R. K., Landy, J., and Brady, M.: Spring melt pond fraction in the Canadian Arctic Archipelago predicted from RADARSAT-2, *The Cryosphere*, 14, 4675–4686, <https://doi.org/10.5194/tc-14-4675-2020>, 2020.
- Howell, S. E. L., Brady, M., and Komarov, A. S.: Generating large-scale sea ice motion from Sentinel-1 and the RADARSAT Constellation Mission using the Environment and Climate Change Canada automated sea ice tracking system, *The Cryosphere*, 16, 1125–1139, <https://doi.org/10.5194/tc-16-1125-2022>, 2022.
- Howell, S. E. L., Babb, D. G., Landy, J. C., and Brady, M.: Multi-Year Sea Ice Conditions in the Northwest Passage: 1968–2020, *Atmosphere-Ocean*, 61, 202–216, <https://doi.org/10.1080/07055900.2022.2136061>, 2023.
- Howell, S. E. L., Babb, D. G., Landy, J. C., Glissenaar, I. A., McNeil, K., Montpetit, B., and Brady, M.: Sea ice transport and replenishment across and within the Canadian Arctic Archipelago, 2016–2022, *The Cryosphere*, 18, 2321–2333, <https://doi.org/10.5194/tc-18-2321-2024>, 2024.
- Howell, S. E. L., Cabaj, A., Babb, D., Landy, J., Dawson, J., Mahmud, M., and Brady, M.: Near sea ice-free conditions in the northern route of the Northwest Passage at the end of the 2024 melt season – Timing of melt onset and ice area flux into the Northwest Passage, Environment and Climate Change Canada's (ECCC) Open Data Server [data set], <https://crd-data-donnees-rdc.ec.gc.ca/CPS/products/IceFlux/Publications/Fluxes-MeltOnset-TheCryosphere-NWP-2025.xlsx> (last access: 8 December 2025), 2025.
- Jahn, A., Holland, M. M., and Kay, J. E.: Projections of an ice-free Arctic Ocean, *Nat Rev Earth Environ*, 5, 164–176, <https://doi.org/10.1038/s43017-023-00515-9>, 2024.
- Jeffers, S., Agnew, T. A., Alt, B. T., de Abreu, R., and McCourt, S.: Investigating the anomalous sea-ice conditions in the Canadian High Arctic (Queen Elizabeth Islands) during summer 1998, *Ann. Glaciol.*, 33, 507–512, 2001.
- Kacimi, S. and Kwok, R.: Arctic snow depth, ice thickness, and volume from ICESat-2 and CryoSat-2: 2018–2021, *Geophysical Research Letters*, 49, <https://doi.org/10.1029/2021GL097448>, 2022.
- Komarov, A. S. and Barber, D. G.: Sea ice motion tracking from sequential dual-polarization RADARSAT-2 images, *IEEE Transactions on Geoscience and Remote Sensing*, 52, 121–136, <https://doi.org/10.1109/TGRS.2012.2236845>, 2014.
- Kruppen, T., von Albedyll, L., Bünger, H. J., Castellani, G., Hartmann, J., Helm, V., Hendricks, S., Hutter, N., Landy, J. C., Lisovski, S., Lüpkes, C., Rohde, J., Suhrhoff, M., and Haas, C.: Smoother sea ice with fewer pressure ridges in a more dynamic Arctic, *Nature Climate Change*, 15, 66–72, <https://doi.org/10.1038/s41558-024-02199-5>, 2025.
- Kwok, R.: Arctic sea ice thickness, volume, and multiyear ice coverage: Losses and coupled variability (1958–2018), *Environmental Research Letters*, 13, 105005, <https://doi.org/10.1088/1748-9326/aae3ec>, 2018.
- Lindsay, D. G.: Sea-ice atlas of Arctic Canada, 1961–1968, Department of Energy, Mines and Resources Canada, <https://doi.org/10.4095/299024>, 1976.
- Lindsay, D. G.: Sea-ice atlas of arctic Canada 1969–1974, <https://doi.org/10.4095/298827>, 1977.
- Mahmud, M. S., Howell, S. E. L., Geldsetzer, T., and Yackel, J.: Detection of melt onset over the northern Canadian Arctic Archipelago sea ice from RADARSAT, 1997–2014, *Remote Sensing of Environment*, 178, 59–69, <https://doi.org/10.1016/j.rse.2016.03.003>, 2016.
- Melling, H.: Sea ice of the northern Canadian Arctic Archipelago, *Journal of Geophysical Research*, 107, <https://doi.org/10.1029/2001JC001102>, 2002.
- Mudryk, L., Dawson, J. P., Howell, S. E. L., Derksen, C., Zagon, T., and Brady, M.: Impact of 1, 2, and 4 °C of global warming on ship navigation in the Canadian Arctic, *Nature Climate Change*, 11, 673–679, <https://doi.org/10.1038/s41558-021-01087-6>, 2021.
- Nicoll, A., Dawson, J., Marty, J., Copland, L., and Sawada, M.: Analysis of shipping accident patterns among commercial and non-commercial vessels operating in ice-infested waters in Arctic Canada from 1990 to 2022, *Journal of Transport Geography*, 121, 104046, <https://doi.org/10.1016/j.jtrangeo.2024.104046>, 2024.

- Nicoll, A., Dawson, J., Marty, J., Sawada, M., and Copland, L.: Comparative and critical analysis of data sources used for ship traffic spatial pattern analysis in Canada and across the global Arctic, *Maritime Transport Research*, 8, <https://doi.org/10.1016/j.martra.2025.100129>, 2025.
- Notz, D. and SIMIP Community: Arctic sea ice in CMIP6, *Geophysical Research Letters*, 47, e2019GL086749, <https://doi.org/10.1029/2019GL086749>, 2020.
- Parkinson, C. L. and DiGirolamo, N. E.: Sea ice extents continue to set new records: Arctic, Antarctic, and global results. *Remote Sensing of Environment*, 267, 112753, <https://doi.org/10.1016/j.rse.2021.112753>, 2021.
- Perovich, D. K., Nghiem, S. V., Markus, T., and Schweiger, A.: Seasonal evolution and interannual variability of the local solar energy absorbed by the Arctic sea ice–ocean system, *Journal of Geophysical Research*, 112, C03005, <https://doi.org/10.1029/2006JC003558>, 2007.
- Pizzolato, L., Howell, S. E. L., Dawson, J., Laliberté, F., and Copland, L.: The influence of declining sea ice on shipping activity in the Canadian Arctic, *Geophysical Research Letters*, 43, 12146–12154, <https://doi.org/10.1002/2016GL071489>, 2016.
- Smith, L. C. and Stephenson, S. R.: New trans-Arctic shipping routes navigable by midcentury, *Proceedings of the National Academy of Sciences of the United States of America*, 110, E1191–E1195, <https://doi.org/10.1073/pnas.1214212110>, 2013.
- Sumata, H., de Steur, L., Divine, D., Granskog, M. A., and Gerland, S.: Regime shift in Arctic Ocean sea ice thickness, *Nature*, 615, 443–449, 2023.
- Thorndike, A. S. and Colony, R.: Sea ice motion in response to geostrophic winds, *Journal of Geophysical Research*, 87, 5845–5852, 1982.
- Timmermans, M.-L. and Labe, Z.: Sea surface temperatures, in: “State of the Climate in 2024”, *Bull. Amer. Meteor. Soc.*, 106, S320–S3322, <https://doi.org/10.1175/BAMS-D-25-0104.1>, 2025.
- Tivy, A., Howell, S. E. L., Alt, B., McCourt, S., Chagnon, R., Crocker, G., Carrieres, T., and Yackel, J. J.: Trends and variability in summer sea ice cover in the Canadian Arctic based on the Canadian ice service digital archive, 1960–2008 and 1968–2008, *Journal of Geophysical Research*, 116, C03007, <https://doi.org/10.1029/2009JC005855>, 2011.
- Wang, X. and Key, J. R.: Arctic surface, cloud, and radiation properties based on the AVHRR Polar Pathfinder dataset, Part I: Spatial and temporal characteristics, *Journal of Climate*, 18, 2575–2593, <https://doi.org/10.1175/JCLI3439.1>, 2005.
- Zhang, X., Flato, G., Kirchmeier-Young, M., Vincent, L., Wan, H., Wang, X., Rong, R., Fyfe, J., Li, G., and Kharin, V. V.: Changes in temperature and precipitation across Canada; Chapter 4, in: *Canada’s Changing Climate Report*, edited by: Bush, E. and Lemmen, D. S., Government of Canada, Ottawa, Ontario, 112–193, 2019.