



Supplement of

Sediment transport capacity response to variations in water discharge in pressurized subglacial channels

Ian Delaney et al.

Correspondence to: Ian Delaney (IanArburua.Delaney@unil.ch)

The copyright of individual parts of the supplement might differ from the article licence.

Table S 1. As Table 3 but with the fractional exponents stated as rounded decimal numbers. For the subaerial regime the exponents are for displayed for the likely width-exponent $\alpha = 1$, as well as its end members 0 (slot canyon) and 1 (only width increases and not depth).

	Width $\times \tau$	MPM	EH	Bagnold
	$w \tau$	$Q_s \propto w \tau^{3/2}$	$Q_s \propto w \tau^{5/2}$	$Q_s \propto w^{-1/2} \Omega^{3/2} H^{-2/3}$
Subaerial ($\alpha = 0$)	$f^{0.7} Q^{0.7} \Psi^{0.7}$	$f^{0.5} Q \Psi$	$f^{0.8} Q^{1.7} \Psi^{1.7}$	$f^{-0.2} Q^{1.1} \Psi^{1.7}$
Subaerial ($\alpha = 0.3$)	$f^{0.7} Q^{0.8} \Psi^{0.7}$	$f^{0.5} Q \Psi$	$f^{0.8} Q^{1.3} \Psi^{1.7}$	$f^{-0.2} Q^{1.0} \Psi^{1.7}$
Subaerial ($\alpha = 1$)	$f^{0.7} Q^{1.0} \Psi^{0.7}$	$f^{0.5} Q \Psi$	$f^{0.8} Q^{0.7} \Psi^{1.7}$	$f^{-0.2} Q^{1.0} \Psi^{1.7}$
R-channel	$f^{0.4} Q^{0.8} \Psi^{0.6}$	$f^{0.5} Q \Psi$	$f^{0.7} Q^{1.4} \Psi^{1.8}$	$f^{-0.2} Q^{1.0} \Psi^{1.7}$
Pipe	$f Q^2 S^{-1}$	$f^{1.5} Q^3 S^{-2.5}$	$f^{2.5} Q^5 S^{-4.5}$	$f^{1.5} Q^{4.5} S^{-4.7}$

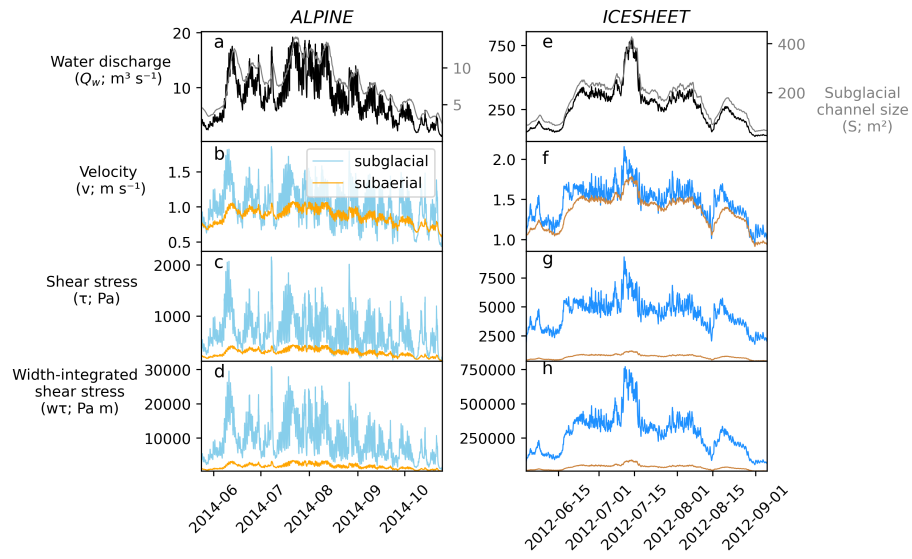


Figure S 1. As Figure 2, with 1 hr aggregation.

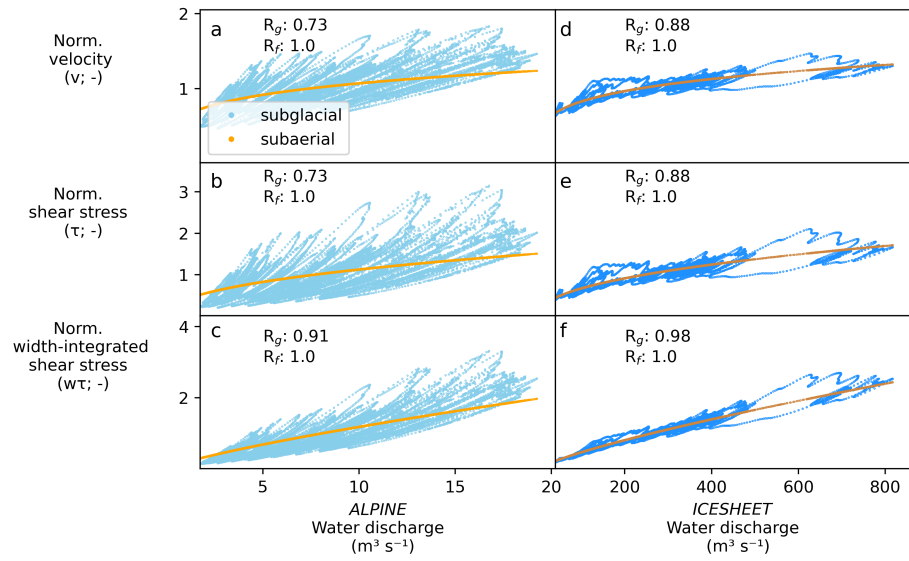


Figure S 2. As Figure 3, with 1 hr aggregation.

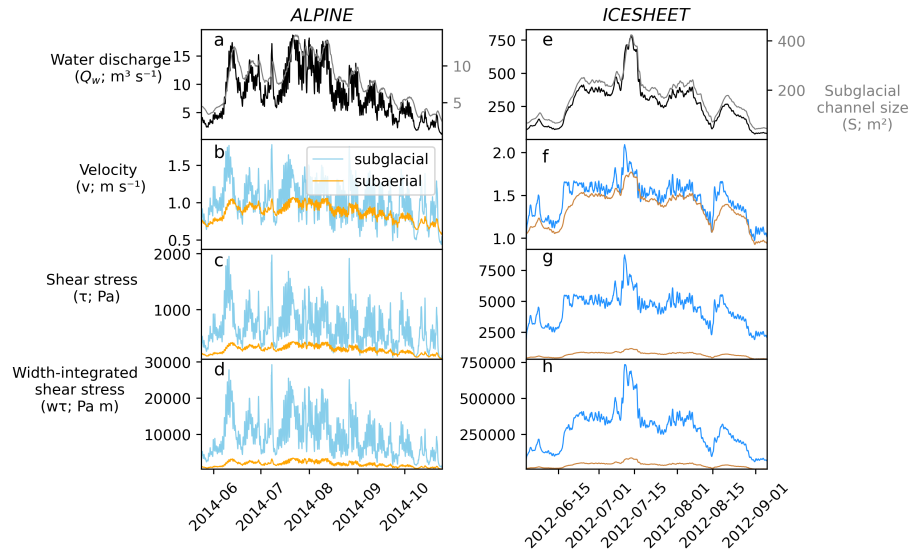


Figure S 3. As Figure 2, with 6 hr aggregation.

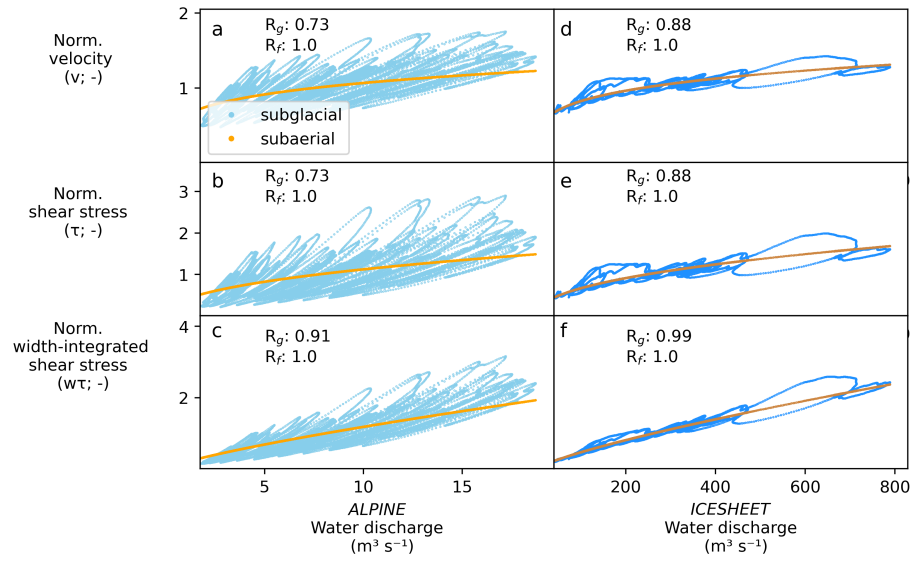


Figure S 4. As Figure 3, with 6 hr aggregation.

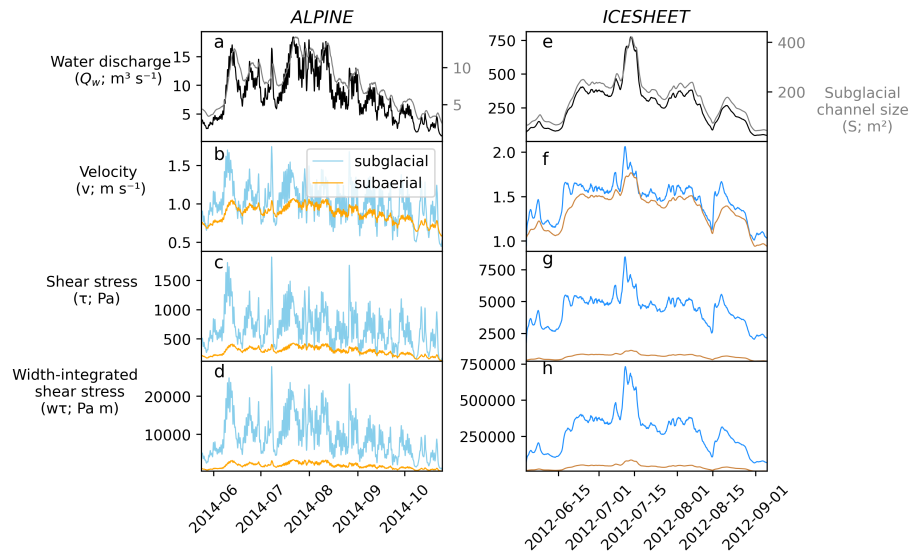


Figure S 5. As Figure 2, with 12 hr aggregation.

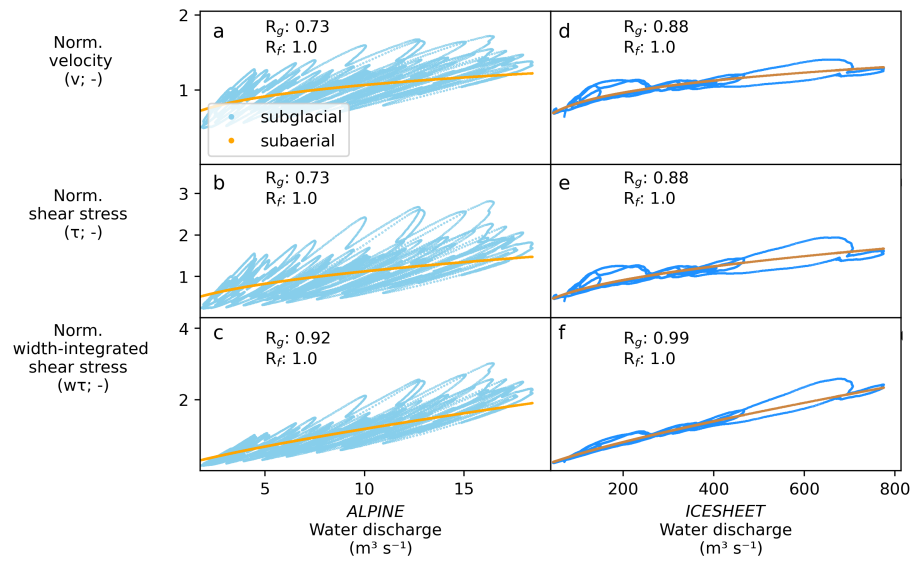


Figure S 6. As Figure 3, with 12 hr aggregation.

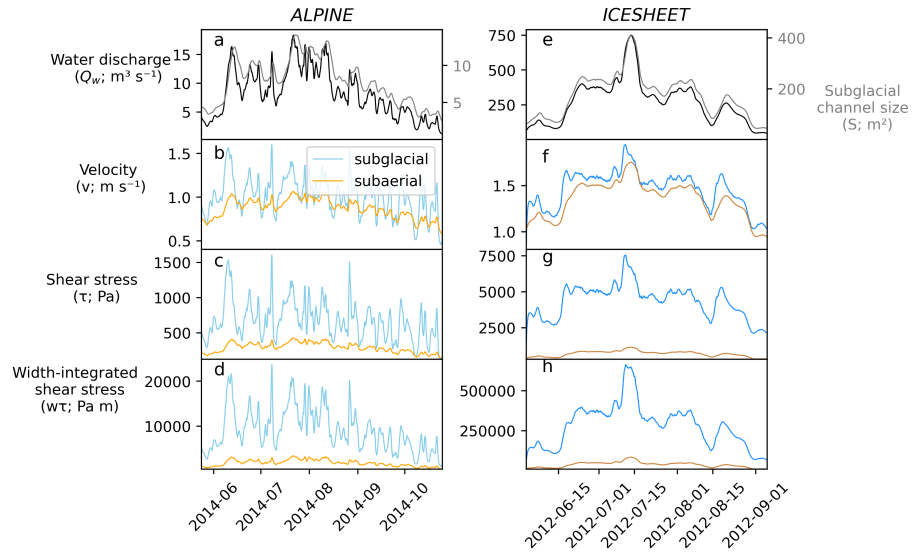


Figure S 7. As Figure 2, with 1 day aggregation.

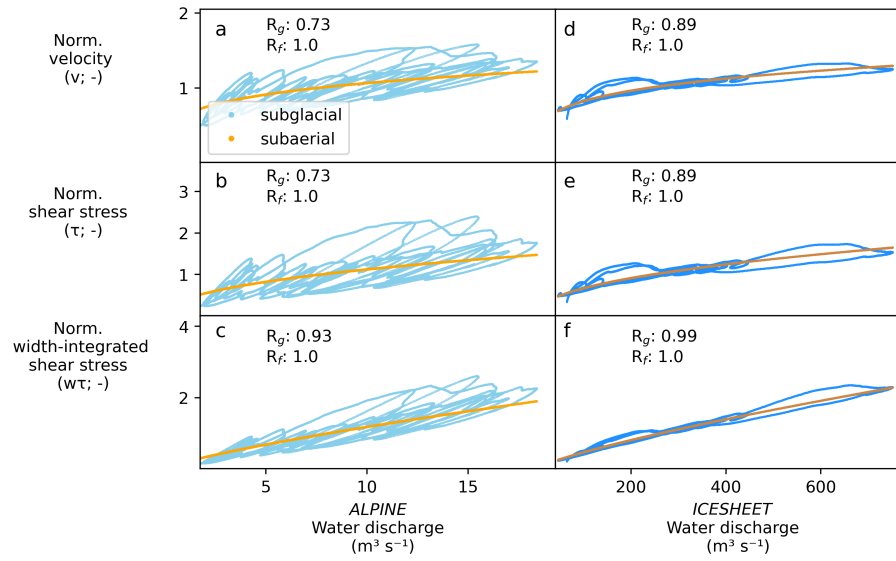


Figure S 8. As Figure 3, with 1 day aggregation.

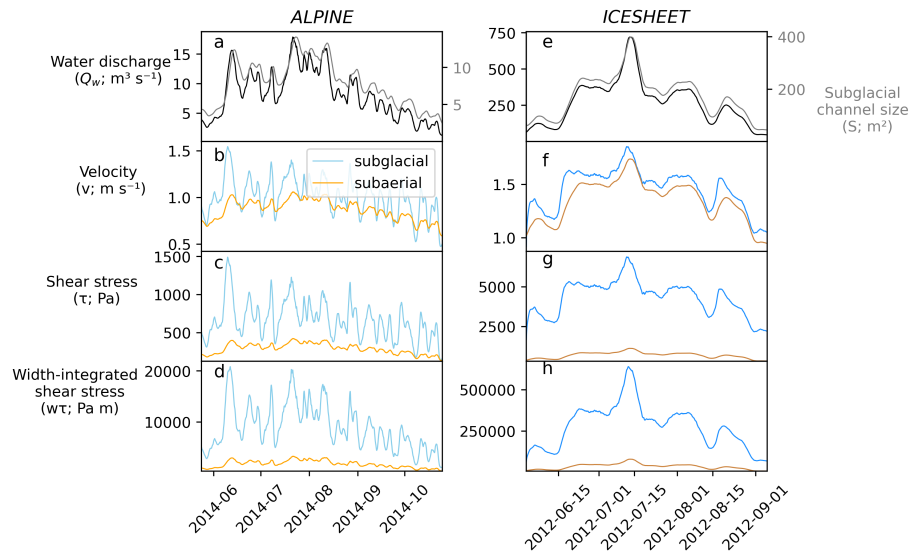


Figure S 9. As Figure 2, with 2 day aggregation.

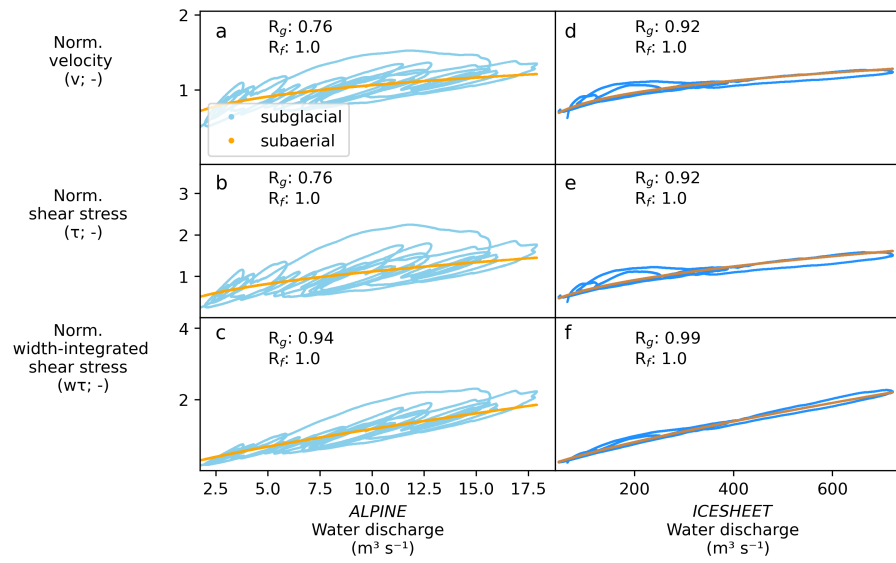


Figure S 10. As Figure 3, with 2 day aggregation.

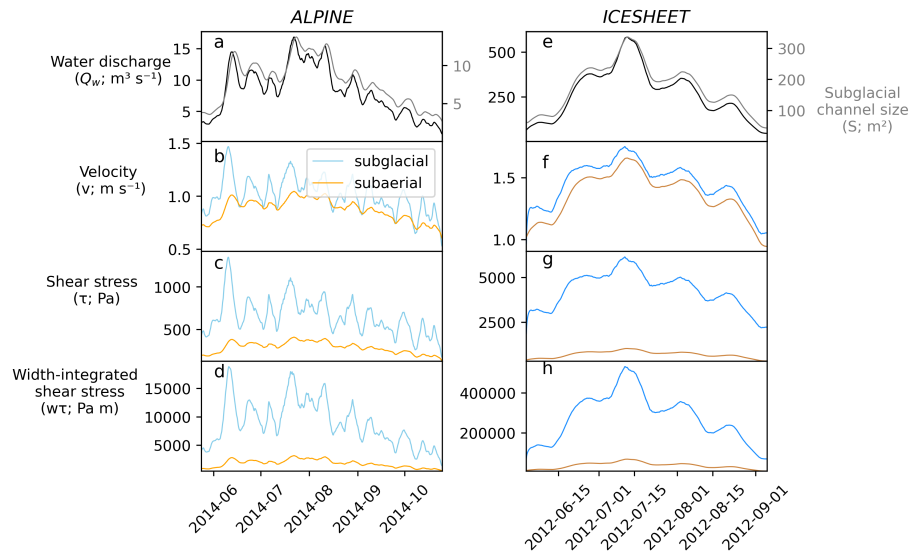


Figure S 11. As Figure 2, with 5 day aggregation.

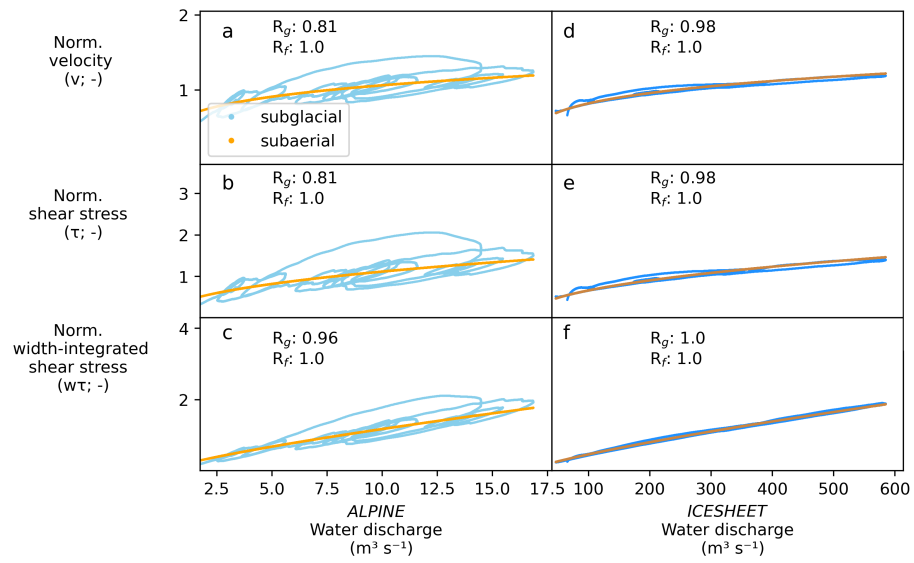


Figure S 12. As Figure 3, with 5 day aggregation.

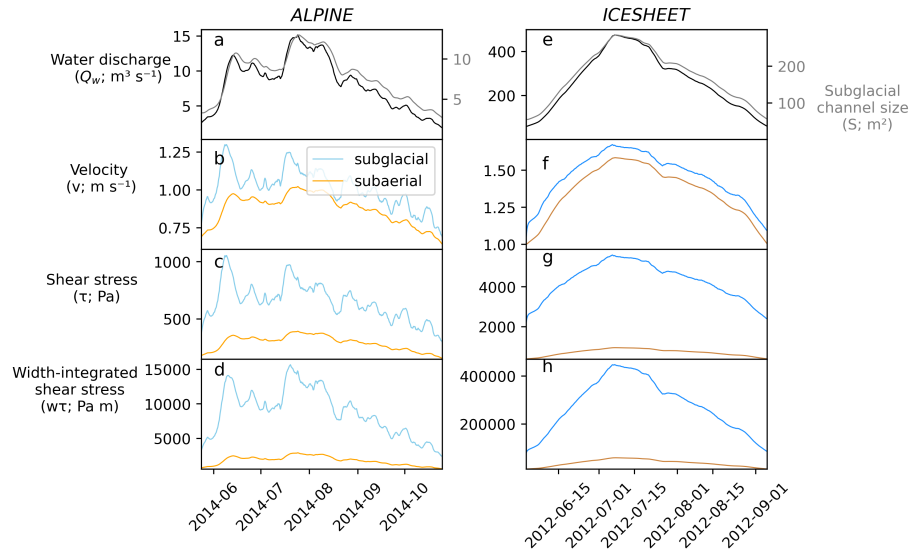


Figure S 13. As Figure 2, with 10 day aggregation.

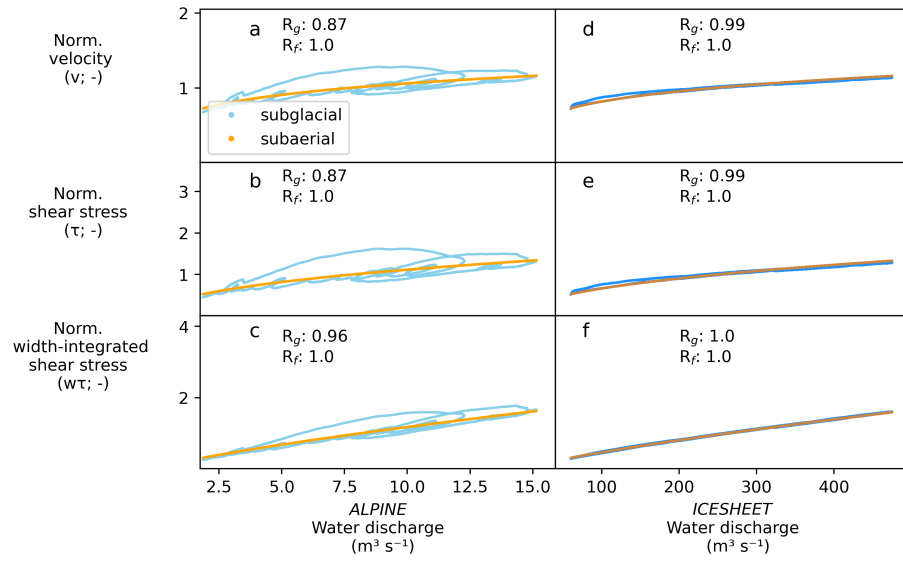


Figure S 14. As Figure 3, with 10 day aggregation.

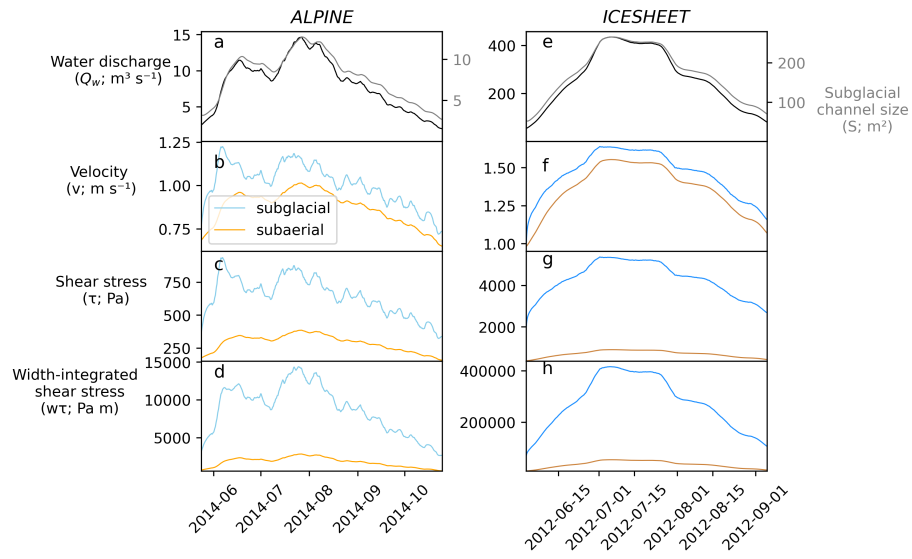


Figure S 15. As Figure 2, with 15 day aggregation.

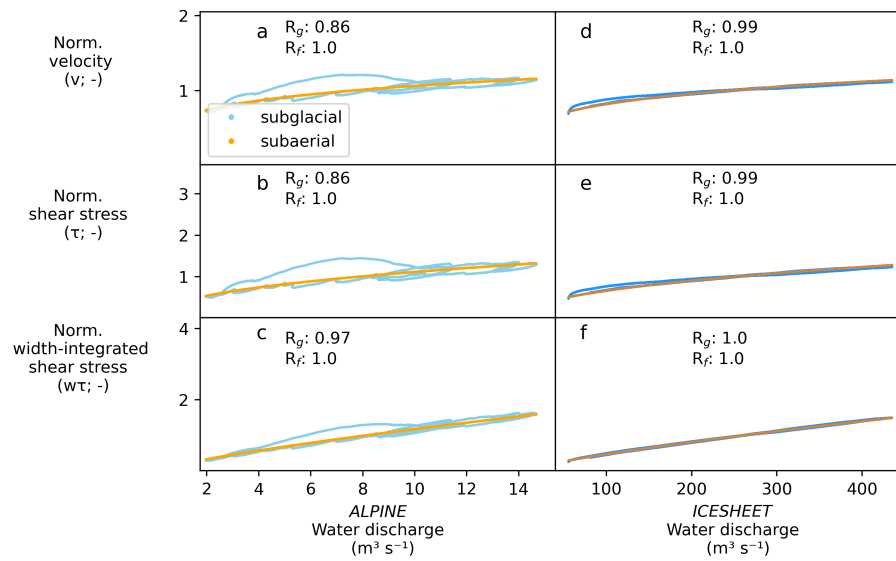


Figure S 16. As Figure 3, with 15 day aggregation.