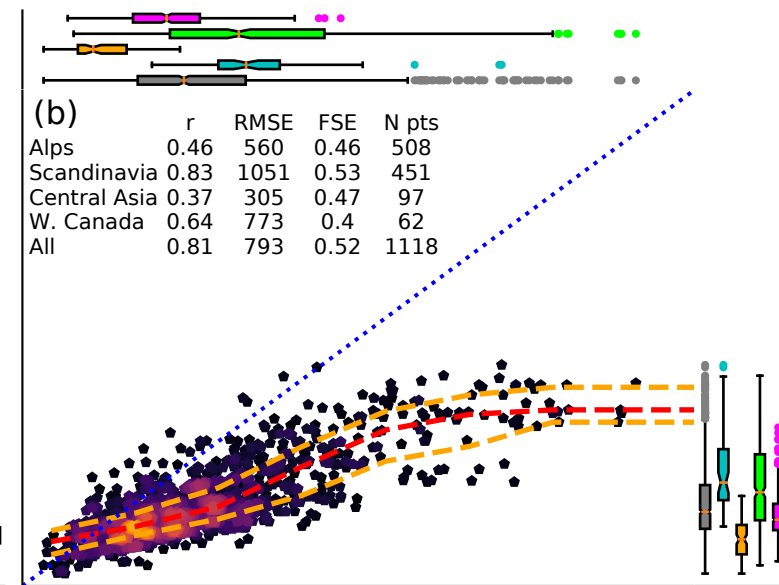
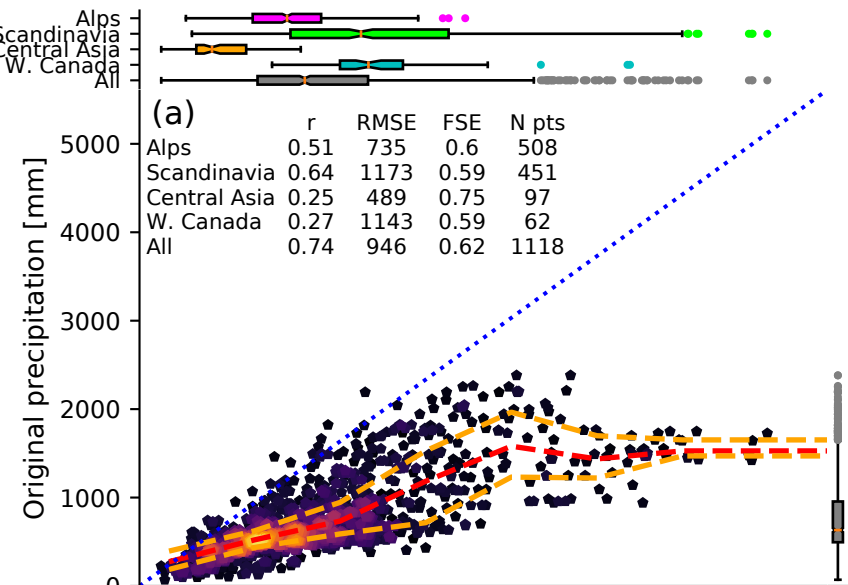


— Median ⋯ $x = y$
- - - 25th, 75th percentiles

0 10 20
 Number of points [#]

MERRA-2

ERA-5

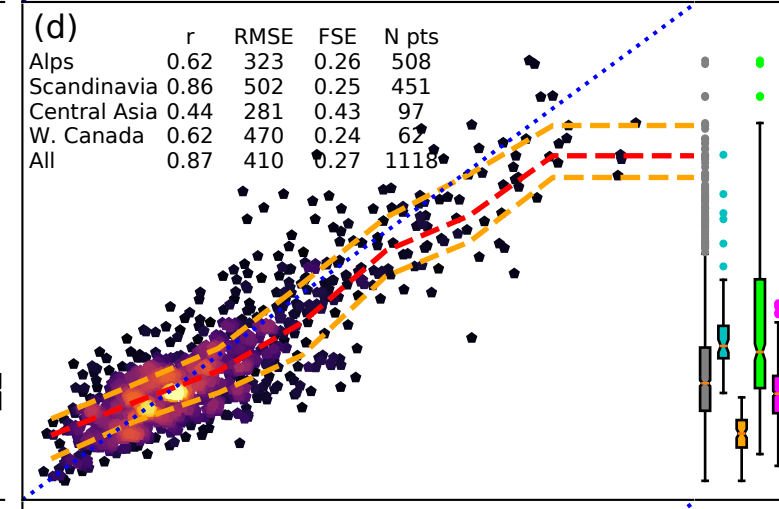
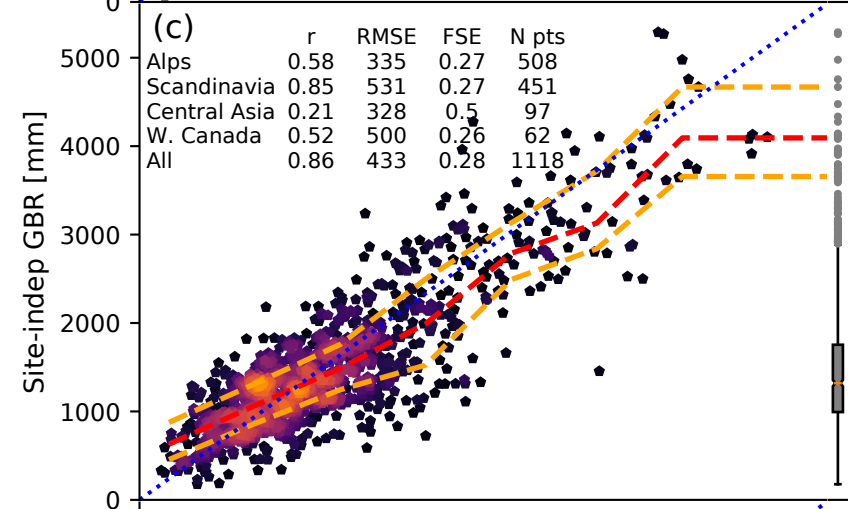


(a)

	r	RMSE	FSE	N pts
Alps	0.51	735	0.6	508
Scandinavia	0.64	1173	0.59	451
Central Asia	0.25	489	0.75	97
W. Canada	0.27	1143	0.59	62
All	0.74	946	0.62	1118

(b)

	r	RMSE	FSE	N pts
Alps	0.46	560	0.46	508
Scandinavia	0.83	1051	0.53	451
Central Asia	0.37	305	0.47	97
W. Canada	0.64	773	0.4	62
All	0.81	793	0.52	1118

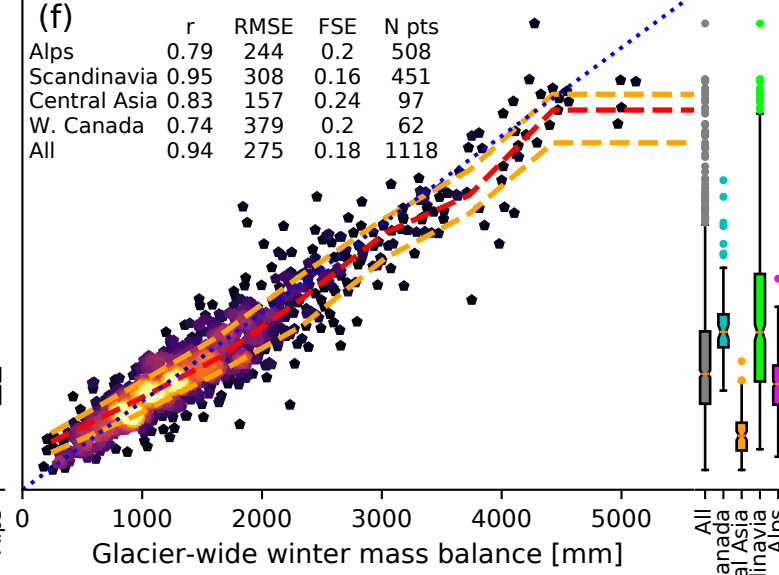
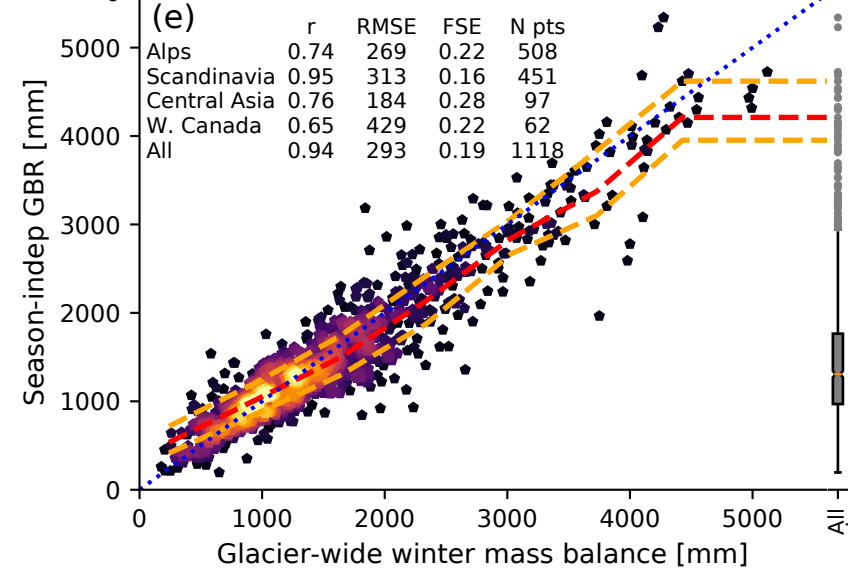


(c)

	r	RMSE	FSE	N pts
Alps	0.58	335	0.27	508
Scandinavia	0.85	531	0.27	451
Central Asia	0.21	328	0.5	97
W. Canada	0.52	500	0.26	62
All	0.86	433	0.28	1118

(d)

	r	RMSE	FSE	N pts
Alps	0.62	323	0.26	508
Scandinavia	0.86	502	0.25	451
Central Asia	0.44	281	0.43	97
W. Canada	0.62	470	0.24	62
All	0.87	410	0.27	1118



(e)

	r	RMSE	FSE	N pts
Alps	0.74	269	0.22	508
Scandinavia	0.95	313	0.16	451
Central Asia	0.76	184	0.28	97
W. Canada	0.65	429	0.22	62
All	0.94	293	0.19	1118

(f)

	r	RMSE	FSE	N pts
Alps	0.79	244	0.2	508
Scandinavia	0.95	308	0.16	451
Central Asia	0.83	157	0.24	97
W. Canada	0.74	379	0.2	62
All	0.94	275	0.18	1118