

Supplementary Information

Slowdown of Shirase Glacier caused by strengthening alongshore winds

B.W.J. Miles*, C.R. Stokes, A. Jenkins, J.R. Jordan, S.S.R. Jamieson, G. H. Gudmundsson

*Correspondence to Bertie.Miles@ed.ac.uk

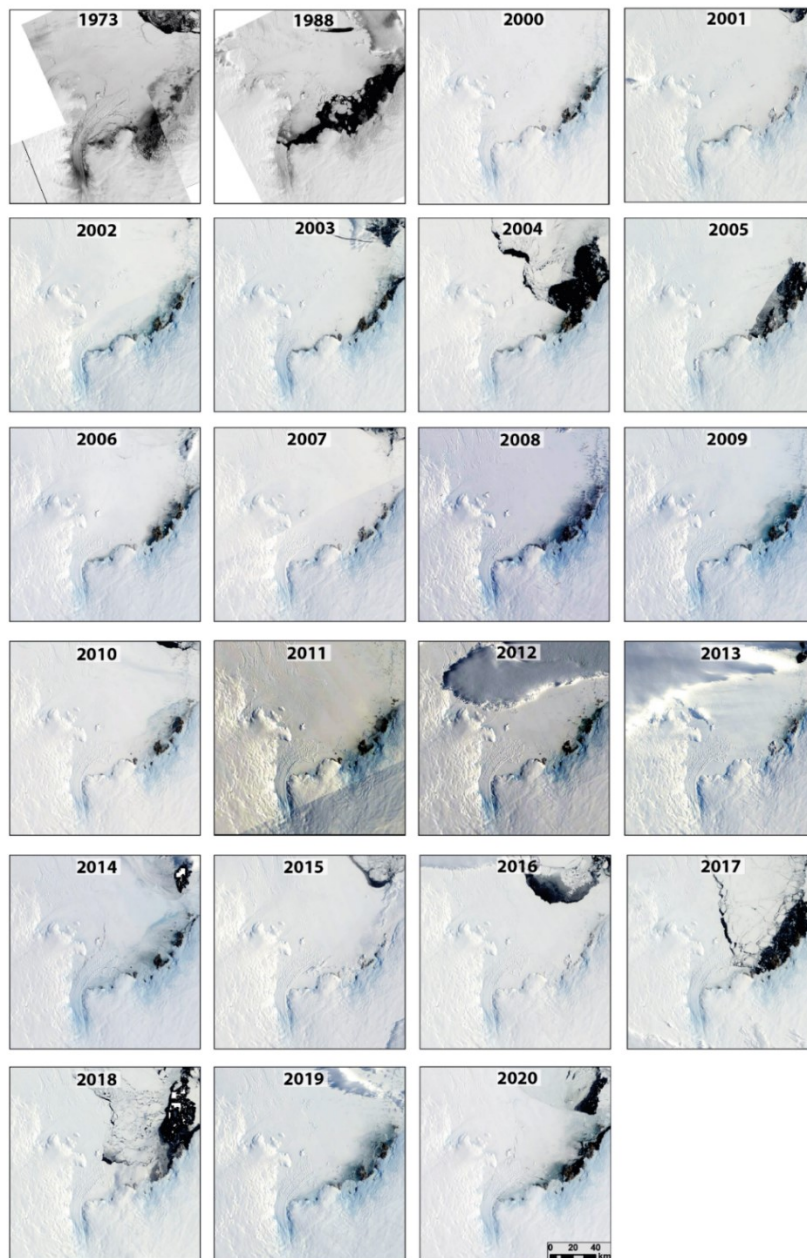


Figure S1: Landfast sea ice conditions in the Lützow-Holm Bay in all satellite imagery used in the study. The Landsat 1 and 4 images in 1973 and 1988 are taken in January and February respectively. The MODIS images between 2000 and 2020 all taken in March. Note the complete break-out of landfast sea-ice in 1988. MODIS imagery were obtained from NASA WorldView. Landsat images are courtesy of the U.S. Geological Survey.

Animation S1: This animation flicks between the Landsat-1 image pair used to extract ice speed from 1973/74. It shows a stable bedrock location in both images confirming the co-registration accuracy.

Animation S2: Same as Animation S1, except for the Landsat-4 image pair used to extract ice speed estimates from 1988

Animation S3: This animation flicks between the SPOT5 DEM from February 2008 and the REMA DEM from October 2015. Note the advance in the break-in-slope between 2008 and 2015. For reference we also include the MOA 2009 grounding line product as an approximation of the grounding line location.