



Supplement of

200-year ice core bromine reconstruction at Dome C (Antarctica): observational and modelling results

François Burgay et al.

Correspondence to: Andrea Spolaor (andrea.spolaor@unive.it)

The copyright of individual parts of the supplement might differ from the article licence.

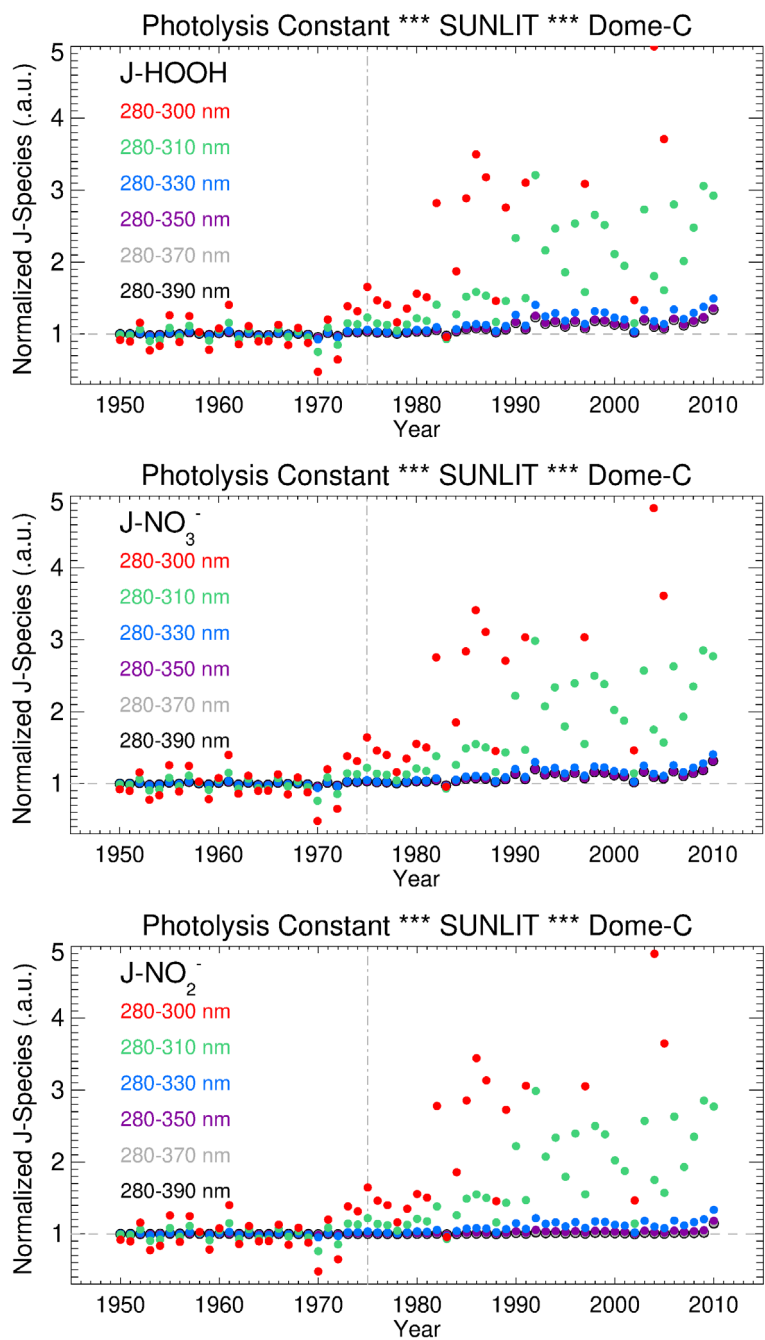


Figure S1 - The photolysis rate (normalized J-value) is reported for H₂O₂ (upper panel), NO₃⁻ (middle panel) and NO₂⁻ (bottom panel) calculated over different wavelength ranges (see main text for more details).

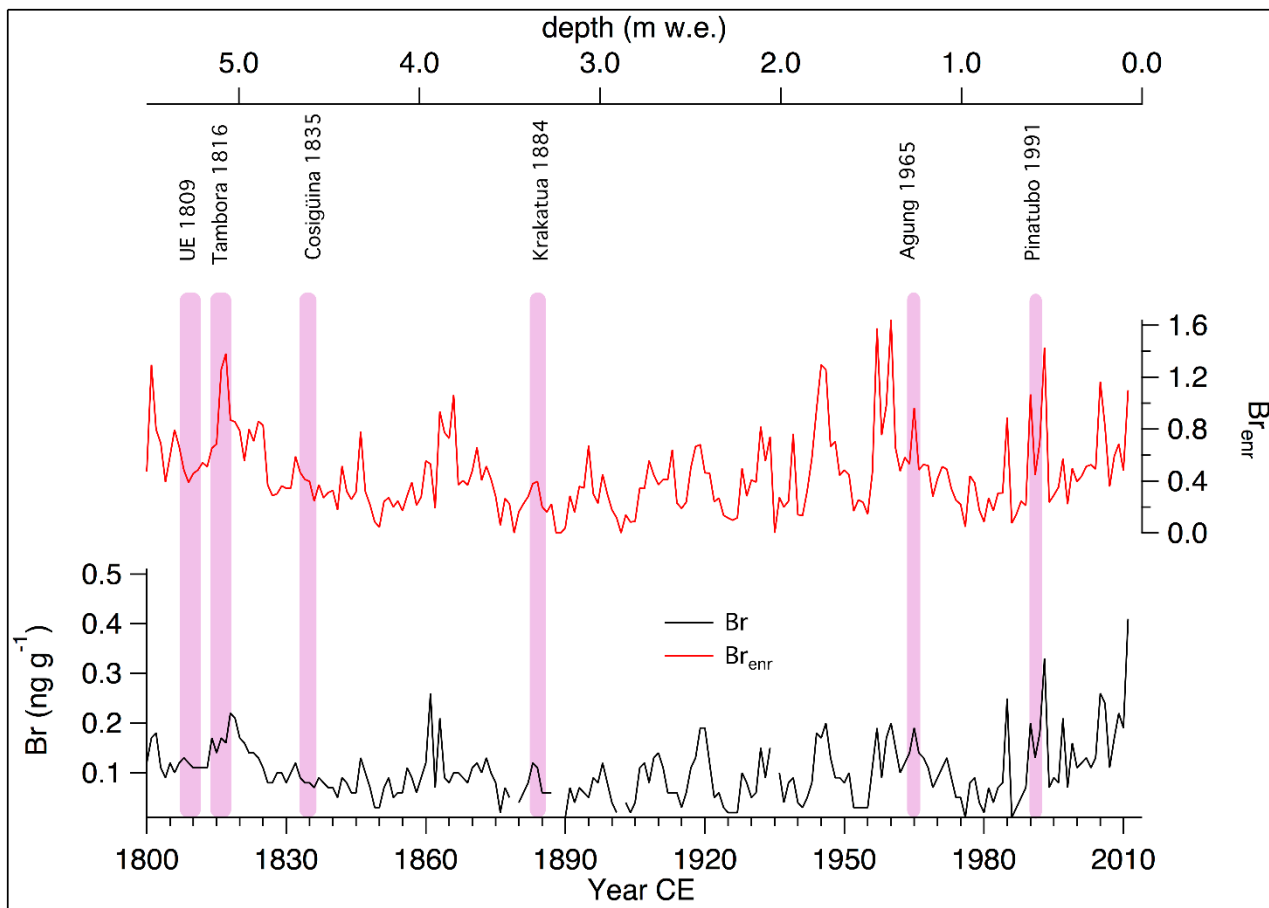


Figure S2 - Br_{enr} (top, red curve), Br (bottom, black curve) records and volcanic eruptions (highlighted with pink vertical bar). Ice core depth is expressed as meters of water equivalent (m w.e.).

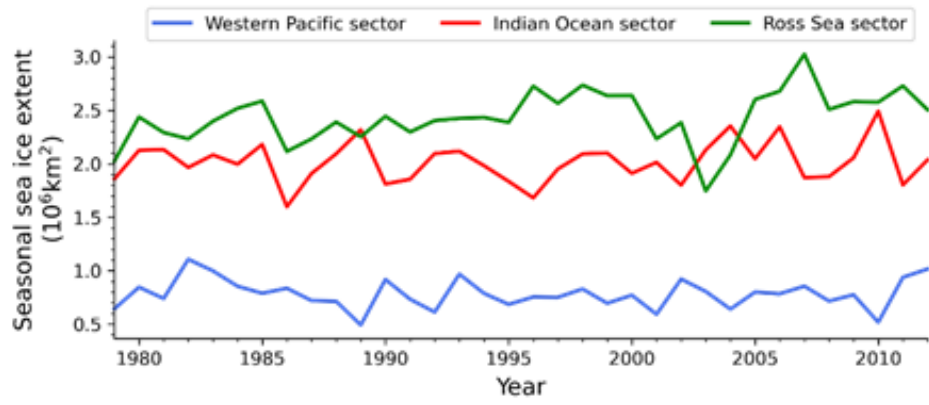


Figure S3 – Sea ice extent in 10⁶ km² for the Western Pacific (blue line), Indian Ocean (red line) and Ross Sea (green line) sectors. Data from Parkinson et al., 2012.

Parkinson, C. L., and D. J. Cavalieri, 2012: Antarctic sea ice variability and trends, 1979-2010, *The Cryosphere*, 6, 871-880, doi:10.5194/tc-6-871-2012.