



*Supplement of*

## **A decade-plus of Antarctic sea ice thickness and volume estimates from CryoSat-2 using a physical model and waveform fitting**

**Steven Fons et al.**

*Correspondence to:* Nathan Kurtz ([nathan.t.kurtz@nasa.gov](mailto:nathan.t.kurtz@nasa.gov))

The copyright of individual parts of the supplement might differ from the article licence.

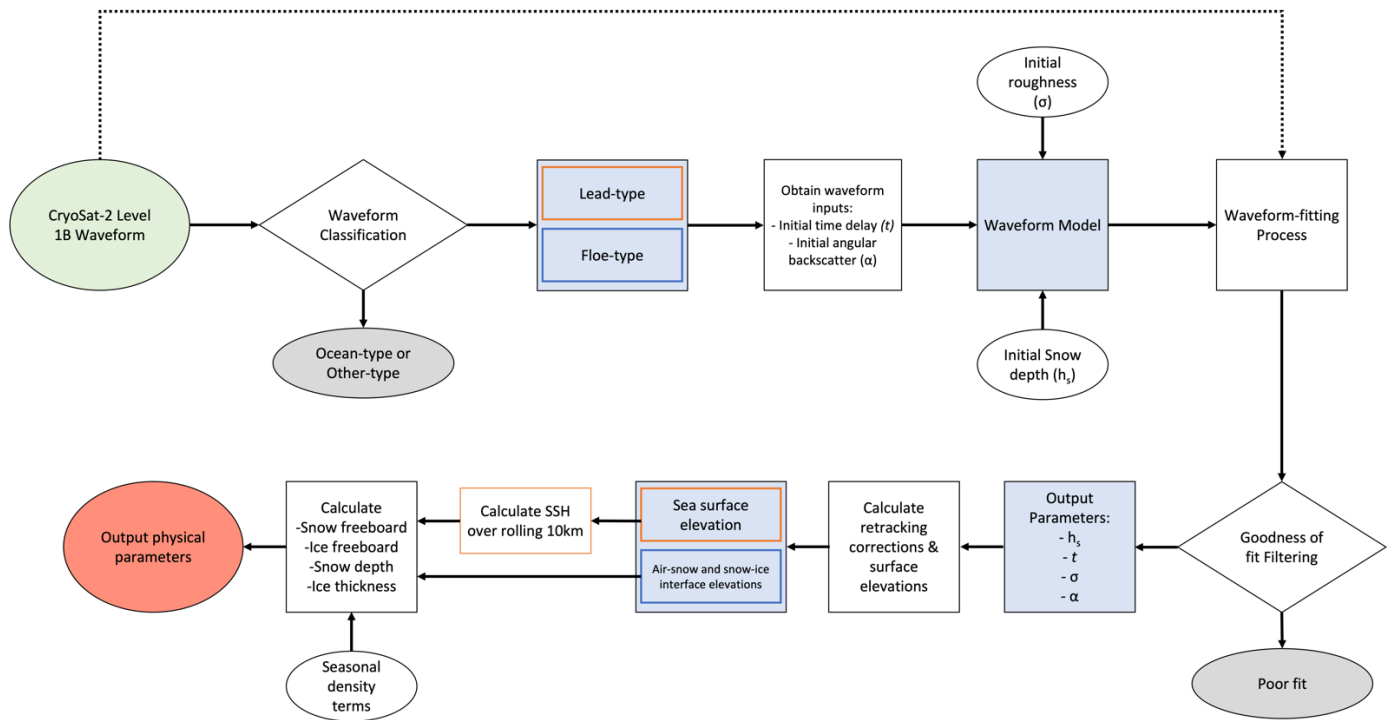


Figure S1: A flowchart of the CS2WFA procedure. Ovals show input/output data (green is start, red is end, white are inputs, grey is discarded), diamonds show decision/filtering processes, white squares show calculations/other processes, and blue squares show ‘milestones’ (inset orange squares for lead-type milestones, blue for floe-type milestones).

Table S1: Years of ICESat and ICESat-2 data included in each month of the initialization “climatology” for the input snow depth parameter.

Month	ICESat Years Included	ICESat-2 Years Included
January	-	2019
February	2004-2006, 2008	2019
March	2004-2008	2019
April	2007	2019
May	2004-2006	2019
June	2004-2006	2019
July	-	2019
August	-	2019
September	-	2019
October	2003-2007	2018-2019
November	2003-2007	2018-2019
December	-	2018-2019