



Supplement of

First evidence of microplastics in Antarctic snow

Alex R. Aves et al.

Correspondence to: Alex R. Aves (alexandra.aves@pg.canterbury.ac.nz)

The copyright of individual parts of the supplement might differ from the article licence.

Supporting Information: First Evidence of Microplastics in Antarctic Snow

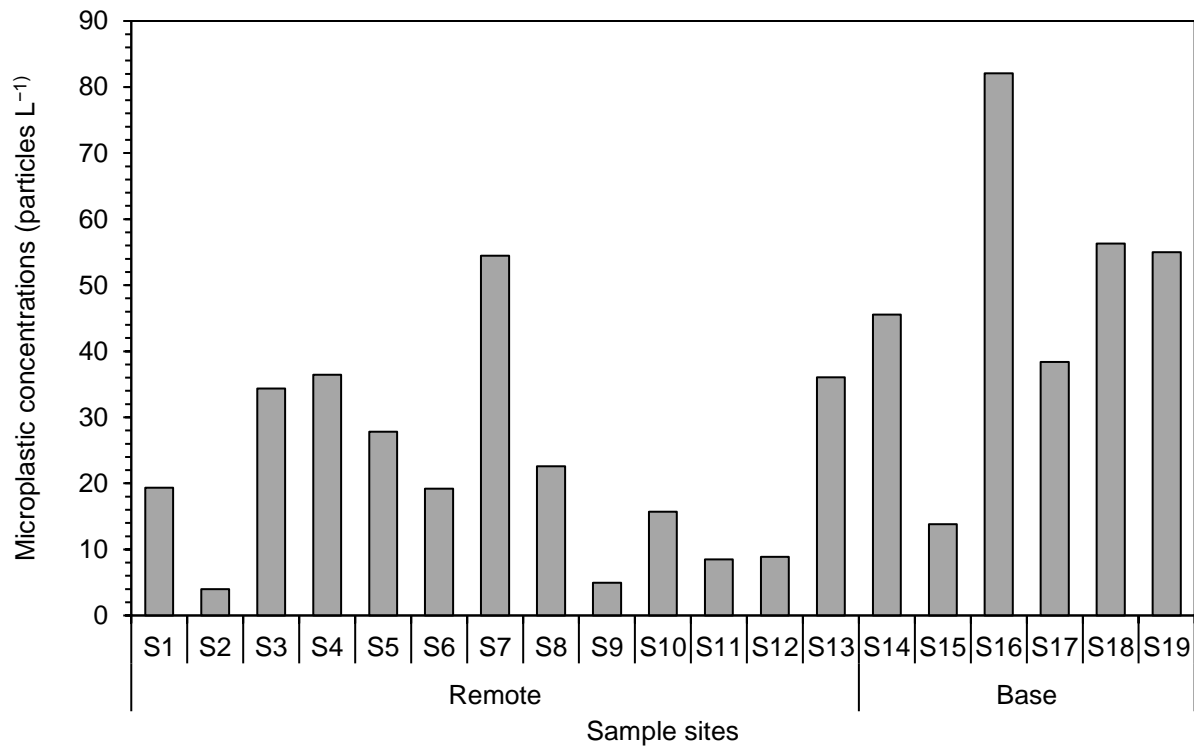


Fig. S1. Microplastic concentrations identified at each sample site from the Ross Island region of Antarctica

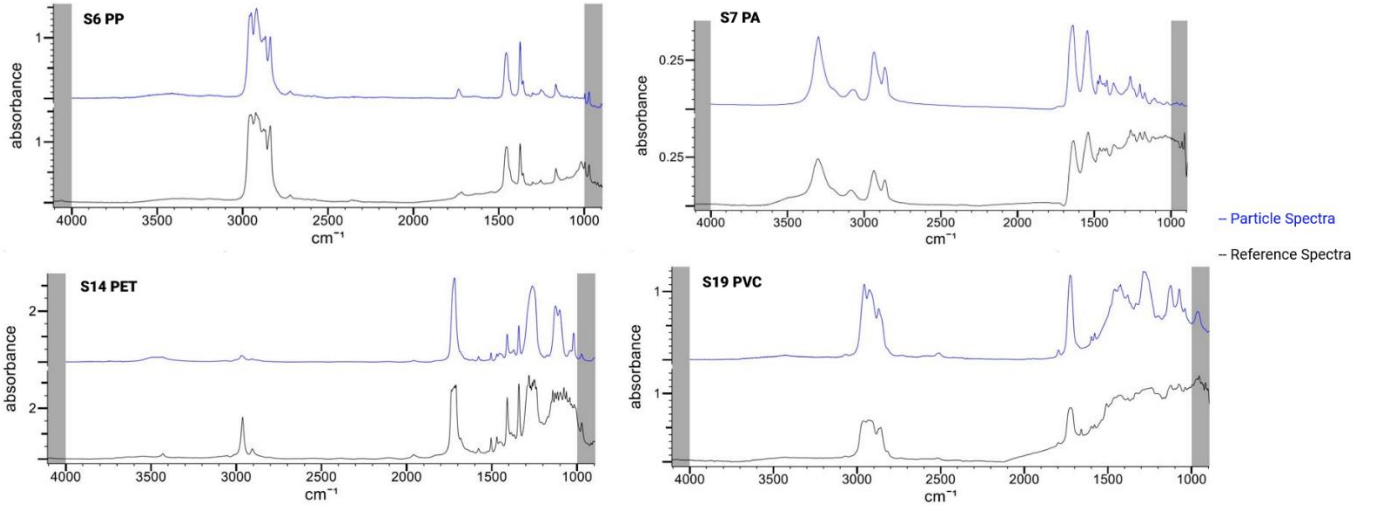


Fig. S2. Examples of identified particle spectra against polymer reference spectra for four identified polymers

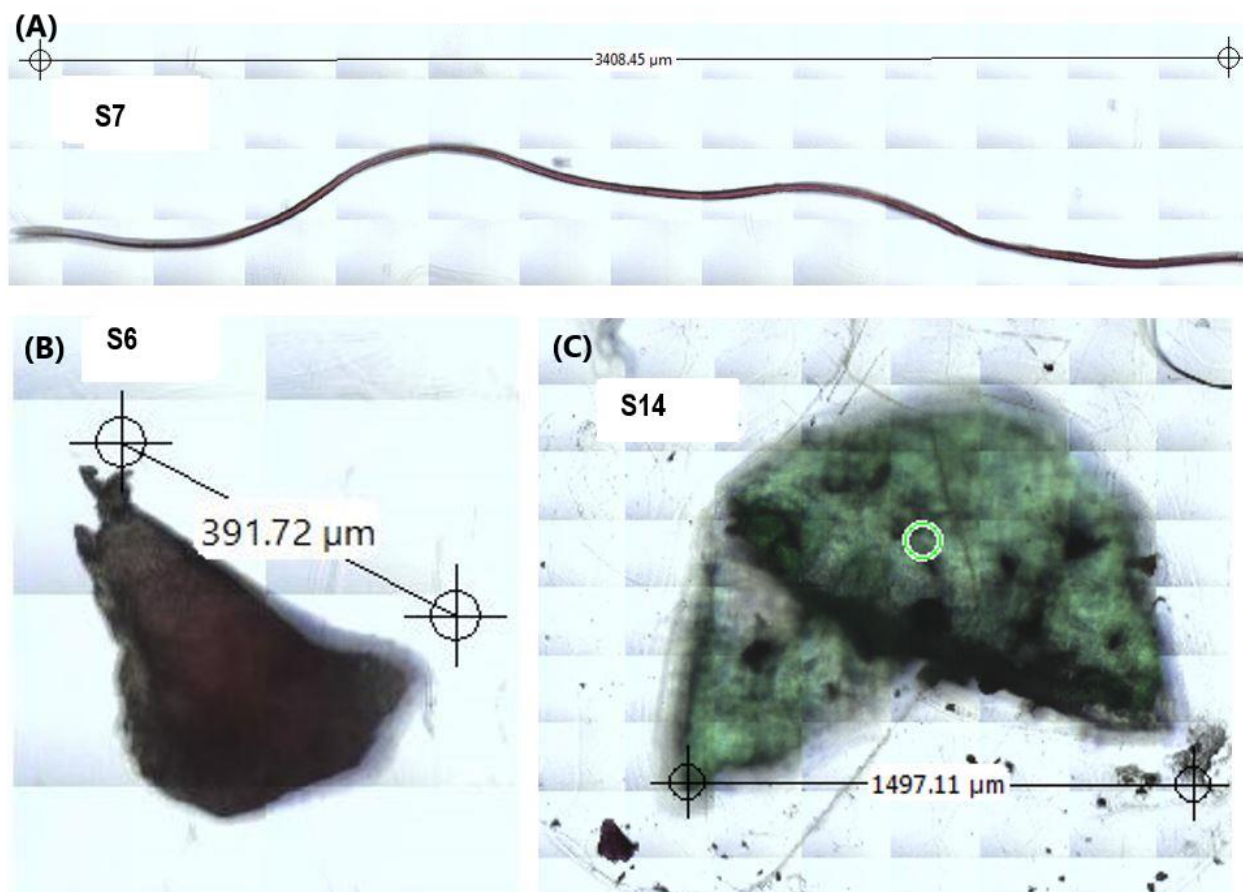


Fig. S3. Example images of identified plastics from three Antarctic samples. (A) Polyamide fibre from S7, (B) Polypropylene fragment from S6, (C) PET film from S14

Table S1. Blank findings from field blanks (FB), laboratory blanks (LB) and daily blanks (DB). Daily blank samples correspond to specific samples processed at the same time and therefore account for contamination of specific samples. Blank corrections were made by subtracting the corresponding daily blank findings from the results before reporting. Fragments were excluded from this table as they were only found in FB and LB, with all matching the colour coating of the sampling bottles.

Blanks (+ corresponding samples)	Morphotype	Colour	Total
FB1	Fibre	Black Clear Clear	3
FB2	Fibre	Black Blue Blue	3
LB1	Fibre	Blue	1
LB2	Fibre	Blue Clear Clear	3
DB1 (S1,S8)	Fibre	Clear Clear	2
DB2 (S2,S3)	Fibre	Clear Clear	2
DB3 (S6,S7)	Fibre	Blue Clear Clear	3
DB4 (S4, S15)	Fibre	Clear Clear	2
DB5 (S9, S11, S12)	Fibre	Blue Clear	2
DB6 (S5,S10)	Fibre	Black Clear	2
DB7 (S17)	None	-	0
DB8 (S13)	Fibre	Blue	1
DB9 (S14)	Fibre	Blue	1
DB10 (S16, S18)	None	-	0
DB11 (S19)	Fibre	Blue Clear	2