



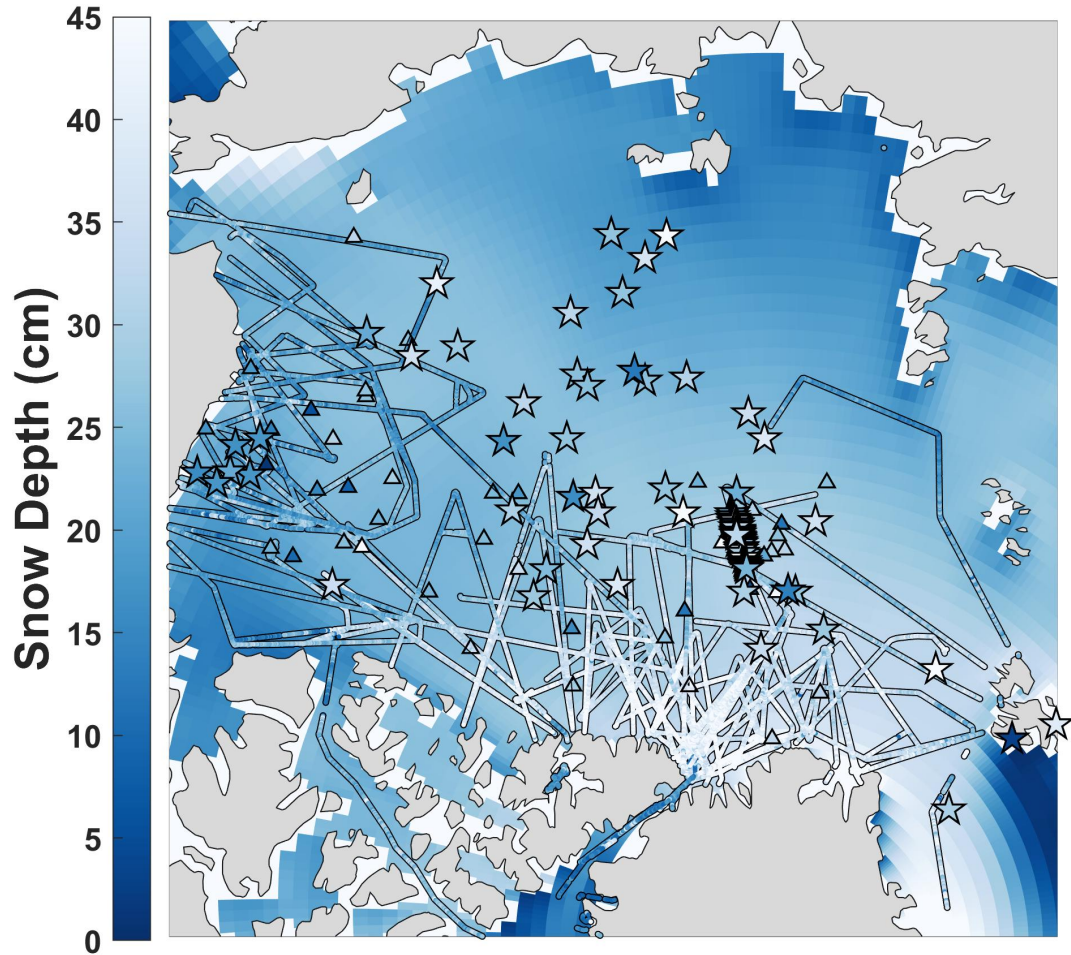
Supplement of

The influence of snow on sea ice as assessed from simulations of CESM2

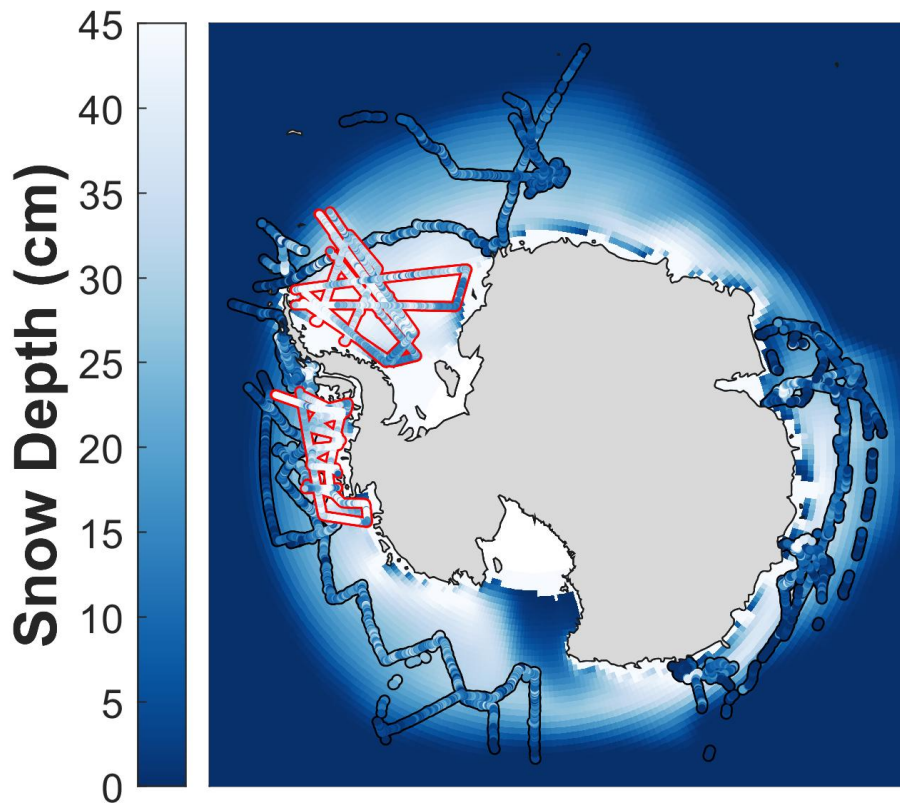
Marika M. Holland et al.

Correspondence to: Marika M. Holland (mholland@ucar.edu)

The copyright of individual parts of the supplement might differ from the article licence.



Supplemental Figure 1. The control simulation snow depth in March-April overlaid with various observations from the 1954-1991 and 1997-2017- periods. Snow depth observations include ice mass balance buoys (triangles; Richter-Menge et al., 2006); mean snow depths from field campaigns (stars) and NASA Operation IceBridge aerial surveys (basin-scale lines; Kwok et al., 2011).



Supplemental Figure 2. The control simulation snow depth in September–November overlaid with observations including from ship observations (black outline; Worby et al., 2008) and from Operation IceBridge aerial surveys (red outline; Kwok et al., 2014)

References:

Kwok, R., Panzer, B., Leuschen, C., Pang, S., Markus, T., Holt, B., and Gogineni, S.: Airborne surveys of snow depth over Arctic sea ice, *J. Geophys. Res.* 116, C11018, 2011.

Kwok, R. and Maksym, T.: Snow depth of the Weddell and Bellingshausen sea ice covers from IceBridge surveys in 2010 and 2011: an examination, *J. Geophys. Res. Oceans* 119, 41414167, 2014.

Richter-Menge, J. A. et al.: Ice mass balance buoys: a tool for measuring and attributing changes in the thickness of the Arctic sea ice cover, *Ann. Glaciol.* 44, 205–210, 2006.

Worby, A. P. et al.: Thickness distribution of Antarctic sea ice, *J. Geophys. Res.* 11, C05S92, 2008.

Data acknowledgements: We thank the following investigators for the 1954-1991; 1997–2017 spring snow depth data: Warren, S., I. Rigor, N. Untersteiner, V. F. Radionov, N. N. Bryazgin, Y. I. Aleksandrov, and R. Colony: Snow depth on Arctic sea ice, *J. Clim.*, 12, 1814–1829, 1999; R. Kwok for the Operation IceBridge snow depth retrievals; C. Polashenski, N. Wright, G. Liston and C. Planck from the project Snow, Wind, and Time: Understanding Snow Redistribution and its Effects on Sea Ice Mass Balance (NSF Award Number: 1603361); B. Notenboom on behalf of the 2-Degree North Pole Expedition; the Norwegian Polar Institute’s long-term Arctic sea ice monitoring programme and the Norwegian Young Sea Ice Cruise (N-ICE2015); B. Ousland (and T. Ulrich in 2007) from Arctic traverses in 2001 and 2007, and A. Hubert and D. Dansercoer from the ESA-sponsored Arctic Arc expedition in 2007.