



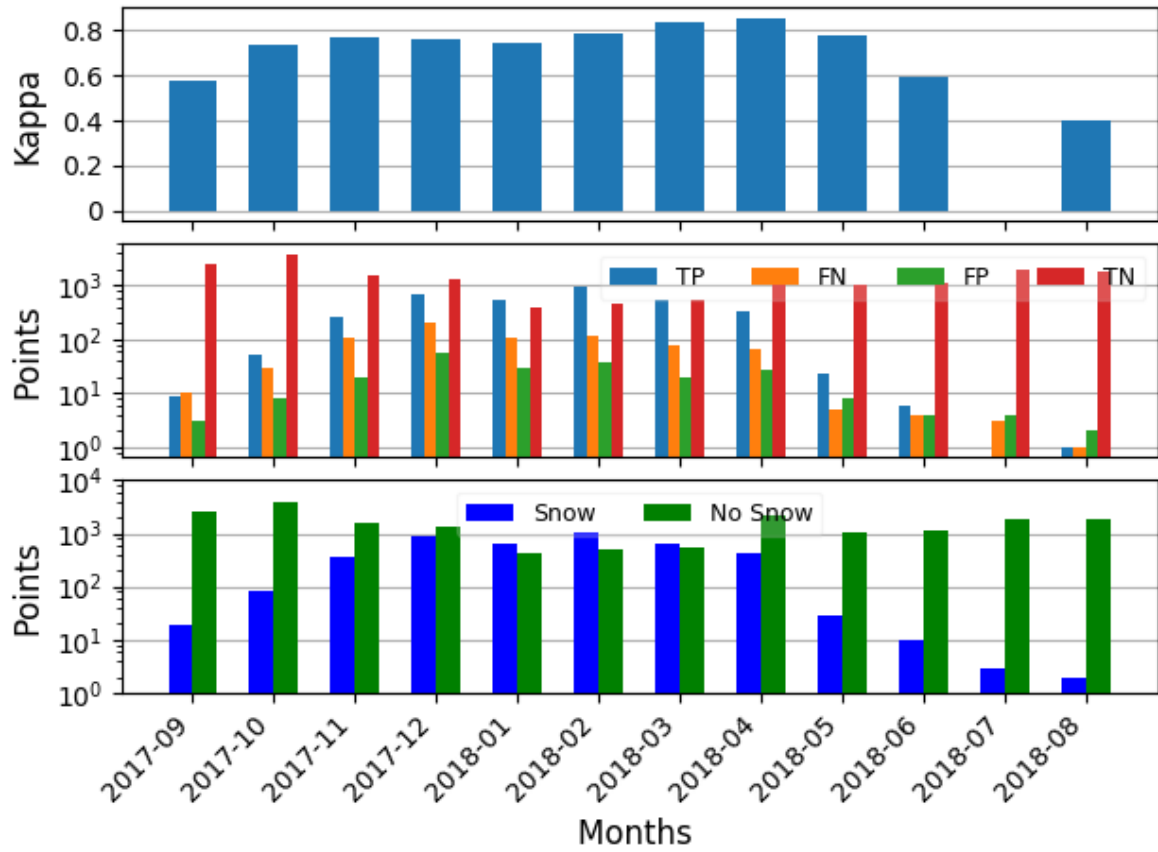
*Supplement of*

**Brief communication: Evaluation of the snow cover detection in the Copernicus High Resolution Snow & Ice Monitoring Service**

**Zacharie Barrou Dumont et al.**

*Correspondence to:* Simon Gascoin ([simon.gascoin@cesbio.cnes.fr](mailto:simon.gascoin@cesbio.cnes.fr))

The copyright of individual parts of the supplement might differ from the article licence.



**Supplementary Figure S1: Results of the evaluation stratified by month. The histograms represent, from top to bottom respectively, the kappa, the amount of TP (true positive), FN (false negative), FP (false positive) and TN (true negative) on a logarithmic scale and the amount of in situ snow (TP + FN) and no-snow (FP + TN) on a logarithmic scale. A kappa score of zero happens when there are zero snow observations or zero no-snow observations for either the HRSI FSC or the reference dataset.**