

Supplement of The Cryosphere, 14, 2303–2312, 2020
<https://doi.org/10.5194/tc-14-2303-2020-supplement>
© Author(s) 2020. This work is distributed under
the Creative Commons Attribution 4.0 License.



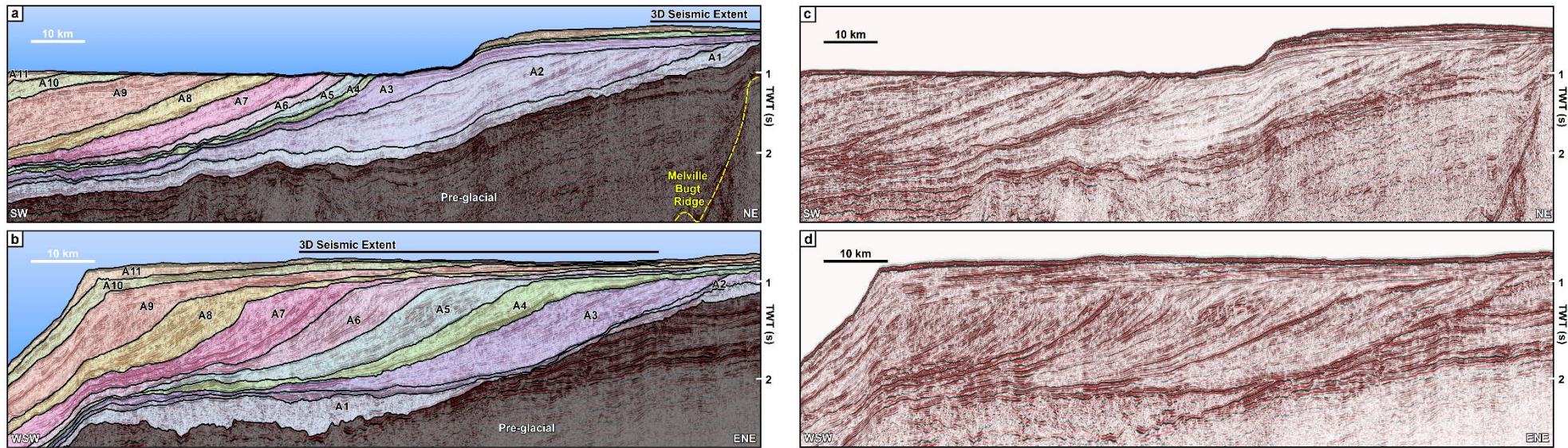
Supplement of

Repeated ice streaming on the northwest Greenland continental shelf since the onset of the Middle Pleistocene Transition

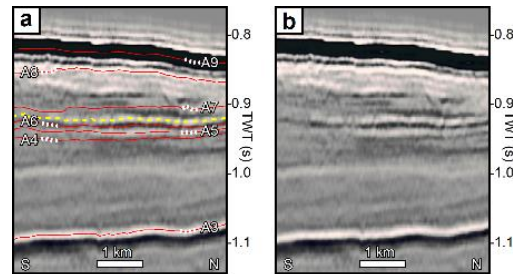
Andrew M. W. Newton et al.

Correspondence to: Andrew M. W. Newton (amwnewton@gmail.com)

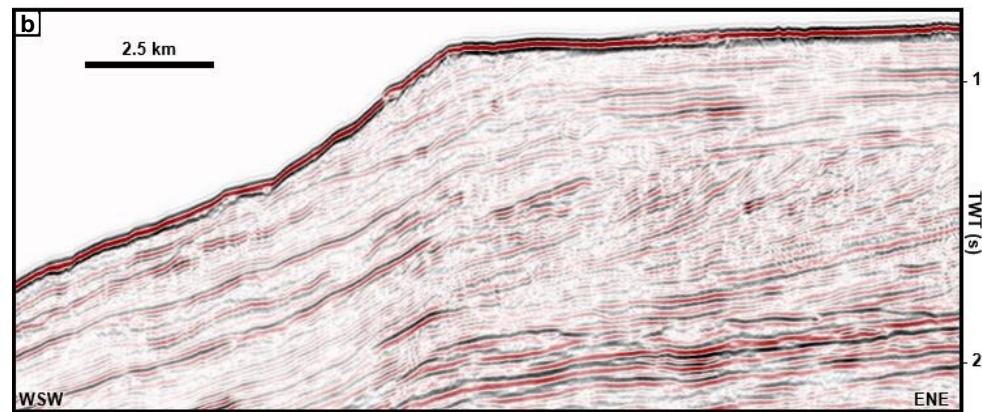
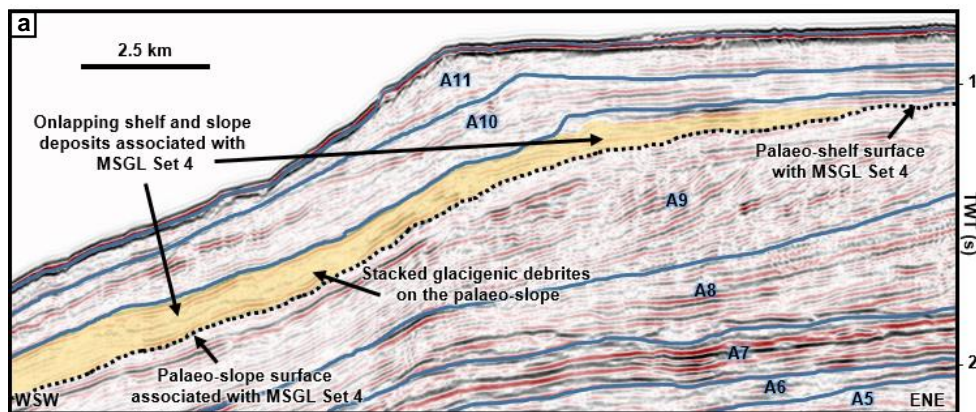
The copyright of individual parts of the supplement might differ from the CC BY 4.0 License.



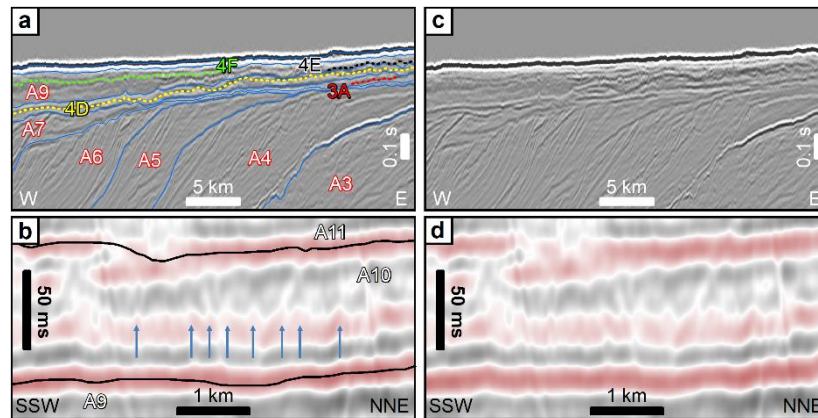
Supplementary Figure S1: Interpreted (a and b) and uninterpreted (c and d) seismic profiles through the units that comprise the glacial succession. These profiles are presented in Figure 2 in the main text of the paper. TWT is two-way-travel time.



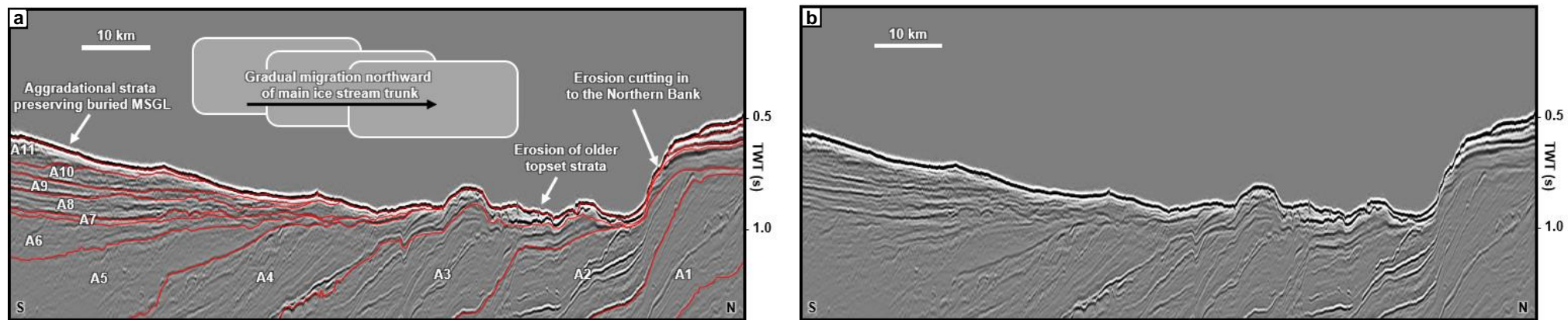
Supplementary Figure S2: Interpreted (a) and uninterpreted (c) seismic profiles showing the stratigraphic position of the oldest example of mega-scale glacial lineations. These profiles are presented in Figure 3 in the main text of the paper. TWT is two-way-travel time.



Supplementary Figure S3: Interpreted (a) and uninterpreted (b) seismic profiles showing stacked debrite packages. This profile is presented in Figure 5 in the main text of the paper. TWT is two-way-travel time.



Supplementary Figure S4: Interpreted (a and b) and uninterpreted (c and d) seismic profiles showing stratigraphic locations of MSGL surfaces from the 3D and 2D data. These profiles are presented in Figure 6 in the main text of the paper. TWT is two-way-travel time.



Supplementary Figure S5: Interpreted (a) and uninterpreted (b) seismic profiles showing variable preservation of topset deposits. This profile is presented in Figure 7 in the main text of the paper. TWT is two-way-travel time.