

Supplement of The Cryosphere, 13, 647–663, 2019
<https://doi.org/10.5194/tc-13-647-2019-supplement>
© Author(s) 2019. This work is distributed under
the Creative Commons Attribution 4.0 License.



Supplement of

Large carbon cycle sensitivities to climate across a permafrost thaw gradient in subarctic Sweden

K.-Y. Chang et al.

Correspondence to: Kuang-Yu Chang (ckychang@lbl.gov)

The copyright of individual parts of the supplement might differ from the CC BY 4.0 License.

1 **Model description**

2 *Ecosys* represents multiple canopy and soil layers and fully coupled carbon, energy,
3 water, and nutrient cycles solved at an hourly time step. Surface energy and water exchanges
4 drive soil heat and water transfers to determine soil temperatures and water contents. These
5 transfers drive soil freezing and thawing and, hence, active layer depth, through the general heat
6 flux equation. Carbon uptake is controlled by plant water status calculated from convergence
7 solutions that equilibrate total root water uptake with transpiration. Atmospheric warming
8 increases surface heat advection, soil heat transfers, and hence active layer depth. Canopy
9 temperatures affect CO₂ fixation rates from their effects on carboxylation and oxygenation
10 modeled with Arrhenius functions for light and dark reactions. Soil temperatures affect
11 heterotrophic respiration through the same Arrhenius function as for dark reactions.

12 Carbon uptake is also affected by plant nitrogen uptake. The model represents fully
13 coupled transformations of soil carbon, nitrogen, and phosphorus through microbially driven
14 processes. Soil warming enhances carbon uptake by hastening microbial mineralization and root
15 nitrogen uptake. Carbon uptake is affected by phenology with leafout and leafoff (deciduous
16 plants) or dehardening and hardening (evergreen plants) being determined by accumulated
17 exposure to temperatures above set values while day length is increasing or below set values
18 while day length is decreasing. Senescence is driven by excess maintenance respiration and by
19 phenology in deciduous plant functional types.

20

21 *Ecosystem-Atmosphere energy exchange:*

22 Canopy energy and water exchanges in *ecosys* are calculated through a multi-layered
23 soil-root-canopy system. The clumping effect for each leaf and stem surface is represented by a

24 species-specific interception fraction to simulate non-uniformity in the horizontal distribution of
25 leaves within each canopy layer. Coupled first-order closure schemes are solved between the
26 atmosphere and each of leaf and stem surfaces in the multi-layered canopy to achieve energy
27 balance at each model time step. Once the system converges to the required canopy temperature,
28 latent and sensible heat fluxes of each canopy layer are calculated based on the simulated vapor
29 pressure deficit, canopy-atmosphere temperature gradient, aerodynamic conductance, and
30 stomatal conductance. Canopy heat storage is calculated from changes in canopy temperature
31 and heat capacities of leaves, twigs, and stems.

32

33 *Canopy water relations:*

34 A convergence solution is sought for the canopy water potential of each plant population
35 at which the difference between its transpiration and total root water uptake equals the difference
36 between its water contents at the previous and current water potentials. Canopy water potential
37 controls transpiration and soil-root water uptake, which affects stomatal conductance and thereby
38 all the processes (e.g., canopy temperature and vapor pressure) described in “Ecosystem-
39 Atmosphere energy exchange”. The water table depth in *ecosys* is calculated at the end of each
40 time step as the depth to the top of the saturated zone below which air-filled porosity is zero.
41 Changes in the simulated water table depth were driven by dynamical interactions among
42 precipitation, evapotranspiration, vertical water transport, and lateral water transport.

43

44 *Canopy carbon and nutrient cycling:*

45 Leaf carboxylation rates are adjusted from those calculated under non-limiting water
46 potential to those under current water potential. The gross canopy CO₂ fixation is the sum of the

47 leaf carboxylation rate of each leaf surface present on each branch of each plant species, which is
48 then transported to a mobile pool of carbon storage. Storage carbon oxidized in excess of
49 maintenance respiration requirements is used as growth respiration to drive the formation of new
50 biomass. Net CO₂ fixation is calculated as the difference between gross fixation and the sum of
51 maintenance, growth, and senescence respiration in the simulated canopy.

52 Nutrient (nitrogen and phosphorous) uptake is calculated for each plant species by
53 solving for aqueous concentrations at root and mycorrhizal surfaces in each soil layer at which
54 radial transport by mass flow and diffusion from the soil solution to the surfaces equals active
55 uptake by the surfaces. This solution dynamically links rates of soil nutrient transformations with
56 those of root and mycorrhizal nutrient uptake. The products of nitrogen and phosphorous uptake
57 are transported to mobile pools of nitrogen and phosphorous stored in each root and mycorrhizal
58 layer, which regulate vegetation growth.

59

60 *Plant functional type dynamics:*

61 The model represents prognostic vegetation dynamics with internal resource allocation
62 and remobilization. Shifts in plant functional types are modeled through processes of plant
63 functional type competition for light, water, and nutrients within each canopy and rooted soil
64 layer depending on leaf area and root length. Each plant functional type competes for nutrient
65 and water uptake from common nutrient and water stocks held across multi-layer soil profiles,
66 calculated from algorithms for transformations and transfers of soil carbon, nitrogen, and
67 phosphorus, and for transfers of soil water. Modeled differences in plant functional type
68 functional traits determine the strategy of resource acquisition and allocation that drive growth,

69 resource remobilization, and litterfall, and therefore each plant functional type dynamic
70 competitive capacity under different environmental conditions.

71

72 *Soil microbial activity:*

73 The modeling of microbial activity is based on six organic states: solid, soluble, sorbed,
74 acetate, microbial biomass, and microbial residues. Carbon, nitrogen and phosphorous may move
75 among these states within each of four organic matter-microbe complexes: plant litterfall, animal
76 manure, particulate organic matter, and humus. Microbial biomass in *ecosys* is an active agent of
77 organic matter transformation. The rate at which each component is hydrolyzed is a function of
78 substrate concentration that approaches a first-order function at low concentrations, and a zero-
79 order function at high concentrations. These rates are regulated by soil temperature through an
80 Arrhenius function and by soil water content through its effect on microbial concentration.
81 Similar to the growth and decline of vegetation biomass described above, the net change in
82 microbial biomass is determined by the difference between heterotrophic respiration and
83 maintenance respiration. When heterotrophic respiration is greater than maintenance respiration,
84 the excessive amount of respiration is used as growth respiration that drives microbial growth
85 according to the energy requirements of biosynthesis.

86

87 Supplemental Material Table 1. Key soil properties of the (a) palsa (b) bog (c) fen at the
 88 Stordalen Mire used in *ecosys*.

	Depth m	BD mg m ⁻³	K _{sat} mm h ⁻¹	TOC g kg ⁻¹	TON g kg ⁻¹	FC m ³ m ⁻³	WP m ³ m ⁻³	pH
<i>(a) Palsa</i>								
	0.01	0.10	100	452.04	8.88	0.4	0.15	3.9
	0.05	0.10	100	438.38	9.62	0.4	0.15	3.9
	0.1	0.12	25	388.16	10.90	0.4	0.15	3.9
	0.2	0.20	25	343.97	12.21	0.4	0.15	3.9
	0.3	0.30	25	331.83	13.86	0.4	0.15	4.1
	0.4	0.80	20	304.80	14.19	0.4	0.15	4.5
	0.5	1.20	18	208.73	10.89	0.4	0.15	4.4
	0.6	1.20	15	206.77	10.88	0.4	0.15	4.4
	0.7	1.23	13	203.92	10.77	0.4	0.15	5.1
	0.9	1.25	12	200.71	11.10	0.4	0.15	5.3
	1.1	1.25	12	150.00	8.60	0.2	0.11	5.3
	1.3	1.35	10	120.00	7.60	0.2	0.11	5.3
	1.5	1.35	10	120.00	7.60	0.2	0.11	5.3
<i>(b) Bog</i>								
	0.01	0.02	500	390.20	4.22	0.4	0.15	4.2
	0.05	0.02	500	407.15	5.59	0.4	0.15	4.2
	0.1	0.04	500	403.20	6.81	0.4	0.15	4.2
	0.2	0.04	500	418.90	8.83	0.4	0.15	4.2
	0.3	0.15	300	461.90	11.93	0.4	0.15	4.2
	0.4	0.35	200	466.60	13.06	0.4	0.15	4.4
	0.5	1.05	100	466.20	13.30	0.4	0.15	4.6
	0.6	1.25	60	406.20	13.30	0.4	0.15	4.7
	0.7	1.30	50	406.20	13.30	0.4	0.15	4.8
	0.9	1.33	40	406.20	13.30	0.4	0.15	4.9
	1.1	1.35	25	400.00	13.60	0.2	0.11	5.0
	1.3	1.35	15	400.00	13.60	0.2	0.11	5.0
	1.5	1.35	15	400.00	13.60	0.2	0.11	5.0
<i>(c) Fen</i>								
	0.01	0.02	500	436.90	13.47	0.4	0.15	5.7
	0.05	0.02	500	435.18	14.97	0.4	0.15	5.7
	0.1	0.04	500	435.14	15.55	0.4	0.15	5.7
	0.2	0.04	500	380.83	15.55	0.4	0.15	5.7
	0.3	0.15	300	340.83	14.47	0.4	0.15	5.7
	0.4	0.35	200	336.51	16.49	0.4	0.15	5.7
	0.5	0.70	100	336.51	17.65	0.4	0.15	5.7

0.6	1.10	60	430.21	22.65	0.4	0.15	5.7
0.7	1.20	50	430.21	22.65	0.4	0.15	5.8
0.9	1.25	40	430.51	22.65	0.4	0.15	5.9
1.1	1.30	25	430.51	22.60	0.2	0.11	6.0
1.3	1.35	15	380.00	20.60	0.2	0.11	6.0
1.5	1.35	15	380.00	20.60	0.2	0.11	6.0

89 Abbreviations BD: bulk density, K_{sat} : saturated hydraulic conductivity, TOC: total organic
90 carbon, TON: total organic nitrogen, FC: field capacity, WP: wilting point.

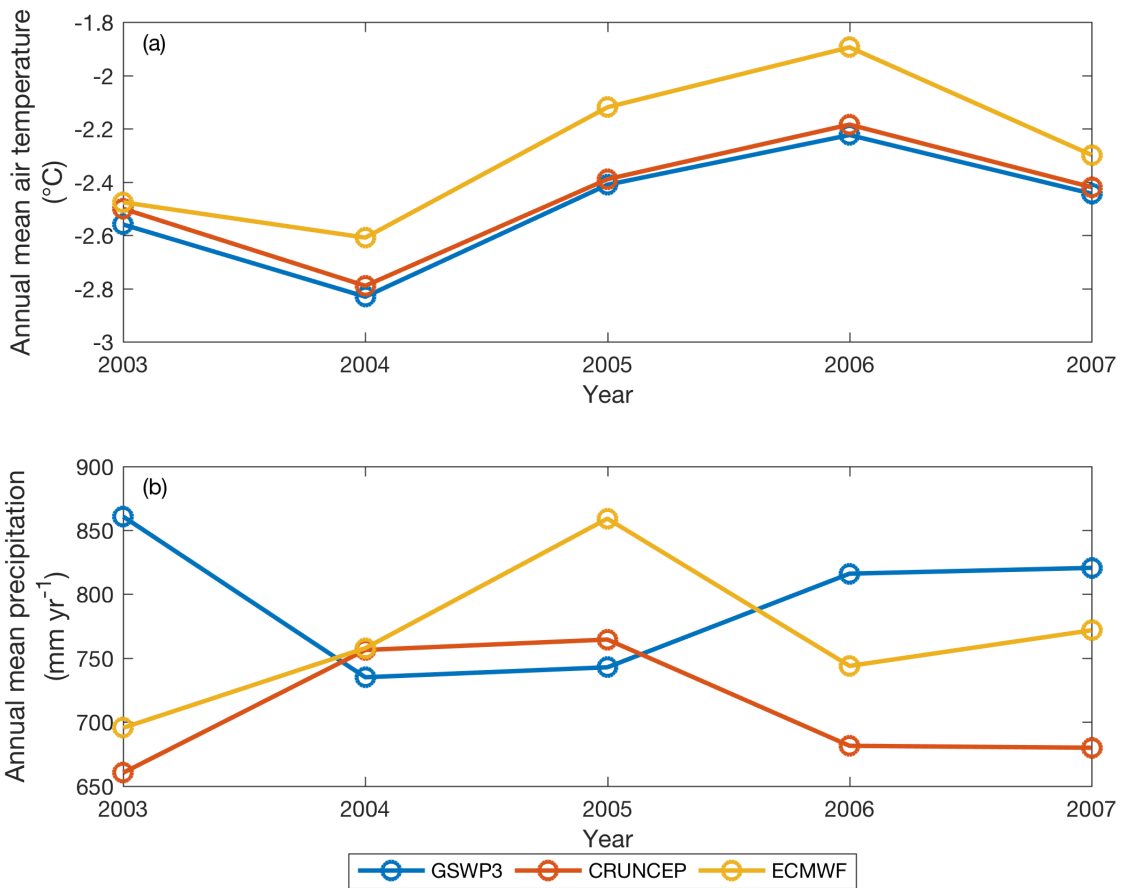
91

92 Supplemental Material Table 2. Key vegetation parameters of the (a) palsa (b) bog (c) fen at the
 93 Stordalen Mire used in *ecosys*.

		$V_{c, \max}$	$C_i:C_a$	SLA	Leaf N:C	Root N:C	Leaf P:C	Root P:C	Planting density
		$\mu\text{mol g}^{-1}\text{s}^{-1}$		$\text{m}^2/\text{g C}$	g N/g C	g N/g C	g P/g C	g P/g C	m^{-2}
(a)									
<i>Palsa</i>									
	Shrub	45	0.7	4.50E-03	7.00E-02	1.75E-02	7.00E-03	1.75E-03	1.00E+00
	Lichen	45	0.7	1.67E-03	4.00E-02	2.00E-02	4.00E-03	2.00E-03	1.00E+02
	Moss	45	0.7	1.67E-03	8.00E-02	4.00E-02	8.00E-03	4.00E-03	1.00E+03
	Sedge	45	0.7	3.33E-03	1.00E-01	2.50E-02	1.00E-02	2.50E-03	1.00E+00
(b)									
<i>Bog</i>									
	Moss	45	0.7	1.67E-03	4.00E-02	2.00E-02	4.00E-03	2.00E-03	6.00E+03
	Sedge	45	0.7	3.33E-03	1.00E-01	2.50E-02	1.00E-02	2.50E-03	2.00E+01
(c)									
<i>Fen</i>									
	Sedge	45	0.7	3.33E-03	3.00E-02	7.50E-03	3.00E-03	7.50E-04	1.00E+01

94

95 Abbreviations V_c, \max : Rubisco Carboxylation Activity, $C_i:C_a$: Ratio of CO₂ concentration
 96 across stomata, SLA: Specific Leaf Area, Leaf N:C: Leaf Nitrogen:Carbon ratio, Root N:C: Root
 97 Nitrogen:Carbon ratio, Leaf P:C: Leaf Phosphorus:Carbon ratio, Root P:C: Root
 98 Phosphorus:Carbon ratio
 99



100

101 Supplemental Material Figure 1. Annual mean air temperature (a) and precipitation (b) extracted

102 from GSWP3 (blue), CRUNCEP (red), and ECMWF (yellow) at the Stordalen Mire.

103